



Company: **Esso Australia Pty Ltd.**

Well: **B-2**

Field: **Bream B**

Rig: **Crane / Prod # 4** Country: **Australia**

**2-1/8" Phased Powerjet MWPT
Perforation Record
7" Posiset Plug Setting Record**

Rig: Crane / Prod # 4
Field: Bream B
Location: Gippsland
Well: B-2
Company: Esso Australia Pty Ltd.

LOCATION			
Gippsland	Elev.: K.B. 47.17 m		
Basin	G.L. 47.17 m		
Bass Strait	D.F. -61 m		
Permanent Datum:	M.S.L.	Elev.: 0 m	
Log Measured From:	K.B.	47.2 m	above Perm. Datum
Drilling Measured From:	K.B.		
State: Victoria	Max. Well Deviation 18 deg	Longitude 148°06'15.37E	Latitude 038°35'40.34S

Logging Date	8-Mar-2008
Run Number	1 through 5
Depth Driller	1995 m
Schlumberger Depth	2100 m
Bottom Log Interval	2100 m
Top Log Interval	1800 m
Casing Fluid Type	Production Fluids
Salinity	
Density	
Fluid Level	1810 m
BIT/CASING/TUBING STRING	
Bit Size	8.500 in
From	768 m
To	2385 m
Casing/Tubing Size	7.000 in
Weight	26 lbm/ft
Grade	L-80
From	21 m
To	2370 m
Maximum Recorded Temperatures	229 degF
Logger On Bottom	8-Mar-2008
Unit Number	889
Recorded By	S Gilbert
Witnessed By	G Rimmer

Run 1	
Oil Density	
Water Salinity	
Gas Gravity	
Bo	
Bw	
1/Bg	
Bubble Point Pressure	
Bubble Point Temperature	
Solution GOR	
Maximum Deviation	18 deg
CEMENTING DATA	
Primary/Squeeze	Primary
Casing String No	
Lead Cement Type	
Volume	
Density	
Water Loss	
Additives	
Tail Cement Type	
Volume	
Density	
Water Loss	
Additives	
Expected Cement Top	
Logging Date	
Run Number	
Depth Driller	
Schlumberger Depth	
Bottom Log Interval	
Top Log Interval	
Casing Fluid Type	
Salinity	
Density	
Fluid Level	
BIT/CASING/TUBING STRING	
Bit Size	
From	
To	
Casing/Tubing Size	
Weight	
Grade	
From	
To	
Maximum Recorded Temperatures	
Logger On Bottom	
Unit Number	
Recorded By	
Witnessed By	

DEPTH SUMMARY LISTING

Date Created: 7-MAR-2008 14:44:18

Depth System Equipment

Depth Measuring Device		Tension Device		Logging Cable	
Type:	IDW-EB	Type:	PSDS/OSDS	Type:	2-32ZT
Serial Number:	6373	Serial Number:	325357	Serial Number:	27244
Calibration Date:	04-Jan-2007	Calibration Date:	3-Mar-2008	Length:	6409.94 M
Calibrator Serial Number:	9	Calibrator Serial Number:	1174	Conveyance Method: Wireline Rig Type: Offshore_Fixed	
Calibration Cable Type:	2-32ZT	Calibration Gain:	0.90		
Wheel Correction 1:	-2	Calibration Offset:	339.00		
Wheel Correction 2:	-4				

Depth Control Parameters

Log Sequence:	Subsequent Trip To the Well
Reference Log Name:	ExxonMobil Petrophysical Analysis
Reference Log Run Number:	
Reference Log Date:	
Subsequent Trip Down Log Correction:	

Depth Control Remarks

1. IDW used as primary depth control
2. Z-Chart used as backup
3. Rigged up using the crane
4.
5.
6.

DISCLAIMER

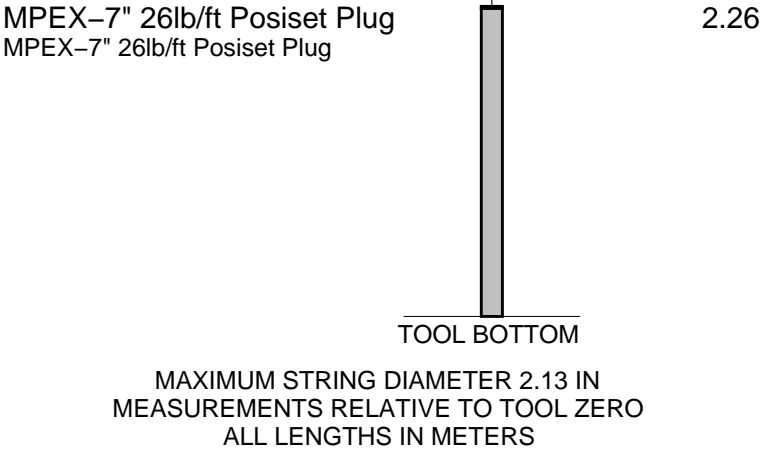
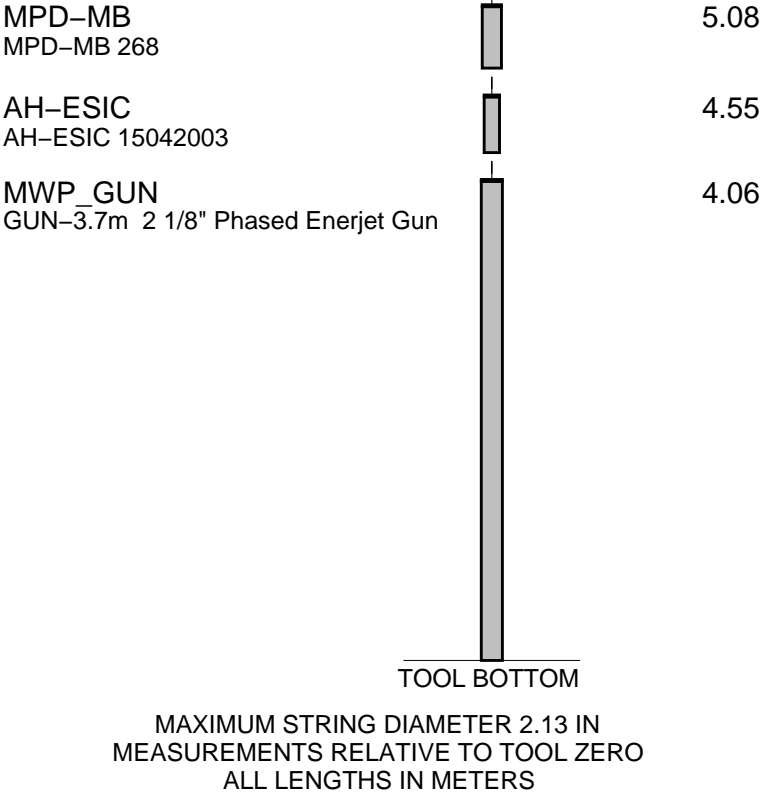
THE USE OF AND RELIANCE UPON THIS RECORDED-DATA BY THE HEREIN NAMED COMPANY (AND ANY OF ITS AFFILIATES, PARTNERS, REPRESENTATIVES, AGENTS, CONSULTANTS AND EMPLOYEES) IS SUBJECT TO THE TERMS AND CONDITIONS AGREED UPON BETWEEN SCHLUMBERGER AND THE COMPANY, INCLUDING: (a) RESTRICTIONS ON USE OF THE RECORDED-DATA; (b) DISCLAIMERS AND WAIVERS OF WARRANTIES AND REPRESENTATIONS REGARDING COMPANY'S USE OF AND RELIANCE UPON THE RECORDED-DATA; AND (c) CUSTOMER'S FULL AND SOLE RESPONSIBILITY FOR ANY INFERENCE DRAWN OR DECISION MADE IN CONNECTION WITH THE USE OF THIS RECORDED-DATA.

OTHER SERVICES1	
OS1: None	
OS2:	
OS3:	
OS4:	
OS5:	
REMARKS: RUN NUMBER 1	REMARKS: RUN NUMBER 2
Log correlated to ExxonMobil Solar Composite Log supplied with logging program.	
Objectives: Perforate the well over the intervals 1960.1m to 1963.8 m MDKB .	
using 2-1/8" 6 SPF, 45 deg phased Powerjet guns with MWPT.	
Set a 7" Posiset plug with top of seal at 1972.5m MDKB then dump approximately 1m of cement on top.	
Maximum Deviation = 18deg @ 440.5m MDKB	
HUD: NOT TAGGED , bridge plug set in 2003 had shifted down hole .	

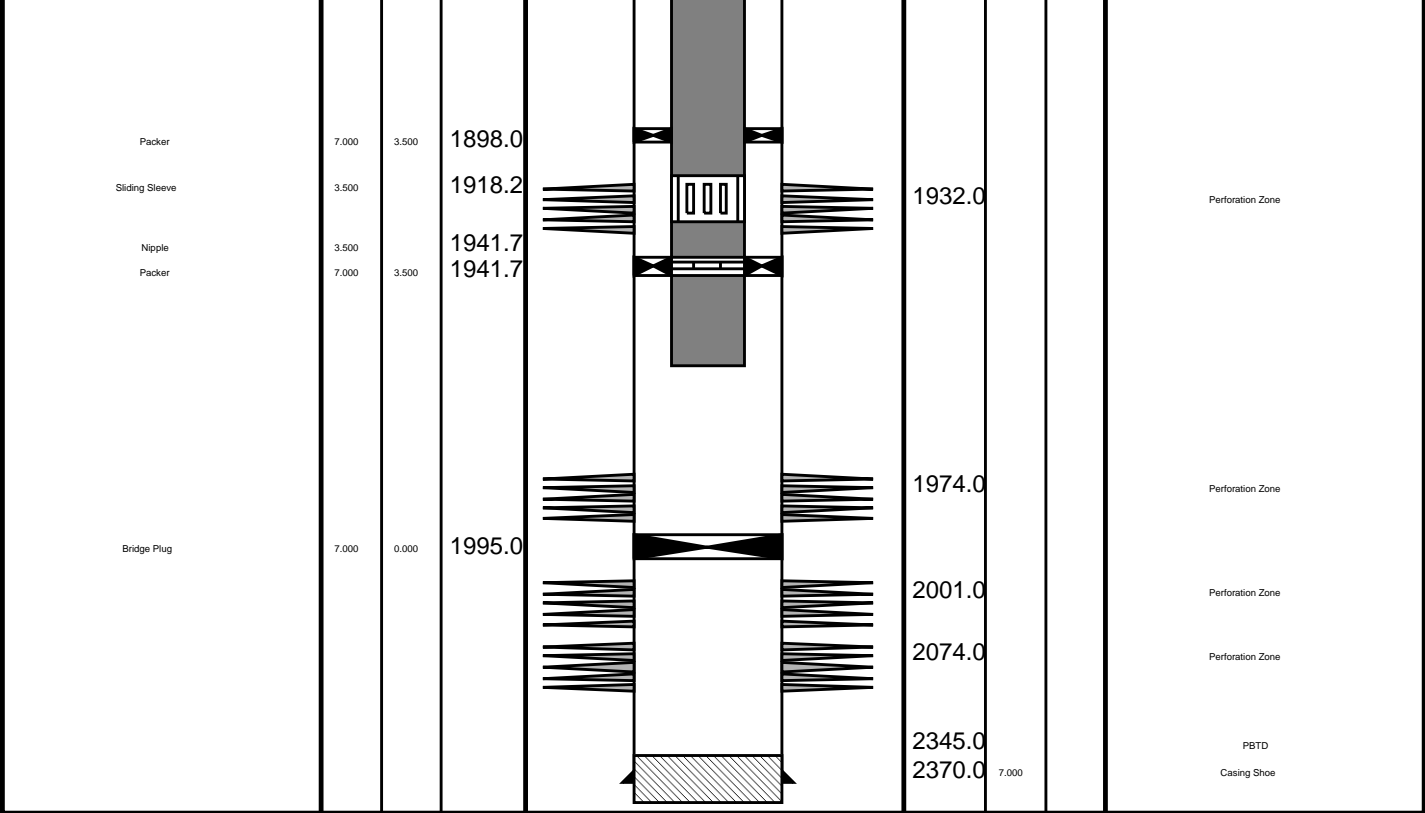
Gun#1
Top Shot @ 1960.1m MDKB
CCL to Top Shot= 3.4 m
CCL Stop Depth= 1956.7M MKDB
7" Posiset Plug
Top of Seal @ 1972.5m MDKB
CCL to Top of Seal = 7m
CCL Stop Depth = 1965.5m MDKB
2.13 Dummy Plug Ran to ensure access for Posiset Plug.
CCL to bottom of dump bailer = 12m
Schlumberger crews:J Light , C Shiells , J Annear

<div> <div>RUN 1</div> <div> <div>SERVICE ORDER #:</div> <div>AUSL08356982</div> </div> <div> <div>PROGRAM VERSION:</div> <div>15C0-309</div> </div> <div> <div>FLUID LEVEL:</div> <div>1810 m</div> </div> </div>					
LOGGED INTERVAL	START	STOP	LOGGED INTERVAL	START	STOP

EQUIPMENT DESCRIPTION					
RUN 1			RUN 2		
SURFACE EQUIPMENT			SURFACE EQUIPMENT		
MWPM-AA			MPBM		
DOWNHOLE EQUIPMENT			DOWNHOLE EQUIPMENT		
<div> <div> <div>AH-SWBS 787</div> <div>AH-SWBS 787</div> </div> <div> <div>AH-SWBS 785</div> <div>AH-SWBS 785</div> </div> <div> <div>AH-SWBS 786</div> <div>AH-SWBS 786</div> </div> <div> <div>MH-SWHS 759</div> <div>MH-SWHS 759</div> </div> <div> <div>AH-124</div> </div> <div> <div>MWGT-AA</div> <div>MWPG-AA 69</div> <div>MWGH-AA 69</div> </div> <div> <div>MWPT-CA</div> <div>MWPH-AA 74</div> <div>MWPS-AA 74</div> </div> <div> <div> <div>CCL</div> <div>SMWP Pres</div> <div>SMWP Temp</div> <div>Tension</div> </div> <div>TOOL ZERO</div> </div> <div> <div>AH-Flex-Joint 41</div> <div>AH-Flex-Joint 41</div> </div> <div> <div>SAH-G</div> <div>SAH-G 1035</div> </div> </div>			<div> <div> <div>AH-SWBS-B 785</div> <div>AH-SWBS-B 785</div> </div> <div> <div>AH-SWBS-B 786</div> <div>AH-SWBS-B 786</div> </div> <div> <div>AH-SWBS-B 787</div> <div>AH-SWBS-B 787</div> </div> <div> <div>MH-SWHS-A 759</div> <div>MH-SWHS-A 759</div> </div> <div> <div>CCL-L 9851</div> <div>CCL-L 9851</div> </div> <div> <div>MPSU-CA 01011</div> <div>MPSU-CA 1011</div> </div> <div> <div> <div>CCL</div> <div>Tachomete</div> <div>Cable Cur</div> <div>Head Volt</div> <div>Tension</div> </div> <div>TOOL ZERO</div> </div> <div> <div>8.67</div> </div> </div>		
12.51	11.83	11.14	10.46	10.10	9.90
11.57	10.87	10.17	9.47	9.13	8.67
8.92	6.10	5.62			



Production String	(in)		(m)	Well Schematic	(m)		(in)	Casing String
	OD	ID	MD		MD	OD	ID	
Tubing Hanger	7.000	3.500	20.3		22.0	13.375	Casing String	
Tubing	3.500		20.3		21.0	7.000		Casing String
					21.0	13.375	7.000	Liner Hanger
Shutin Valve	3.500		449.0					
Gas Lift Mandrel	3.500		632.0					
Gas Lift Mandrel	3.500		776.0			768.0	13.375	Casing Shoe
Gas Lift Mandrel	3.500		987.0					
Nipple	3.500		1003.0					



Job Events Summary

MAXIS Field Log

Schlumberger Job Event Summary

	Time	Elapsed Time	Depth (M)	File
Log Pass (up)	8-Mar-2008 10:01	000:19	2100.4 – 1867.2	PSP_016LUP
Log Pass (up)	8-Mar-2008 13:26	000:08	2002.5 – 1947.2	PERFO_028LUP
Log Pass (up)	8-Mar-2008 13:38	000:23	2000.3 – 1939.1	PERFO_029LUP
Station Log	8-Mar-2008 13:44	000:13	1956.7 – 1.9	PERFO_030LTP
Log Pass (up)	9-Mar-2008 10:19	000:02	1927.4 – 1918.3	MPBT_041LUP
Log Pass (up)	9-Mar-2008 10:40	000:04	1992.9 – 1965.5	MPBT_046LUP
Simulated Log	9-Mar-2008 10:45	000:24		MPBT_047LUP
Log Pass (up)	9-Mar-2008 11:09	000:05	1965.4 – 1920.1	MPBT_048LUP
Log Pass (up)	9-Mar-2008 12:43	000:06	1962.0 – 1920.1	PERFO_053LUP
Log Pass (up)	9-Mar-2008 13:51	000:06	1961.8 – 1921.3	PERFO_056LUP



Cement Dump Pass

MAXIS Field Log

Output DLIS Files

DEFAULT PERFO_056LUP FN:55 PRODUCER 09-Mar-2008 13:51 1961.8 M 1921.3 M

OP System Version: 15C0-309
MCM

SHM_GUN SRPC-3546-Q1_2008_OP15 CCL-L SRPC-3546-Q1_2008_OP15

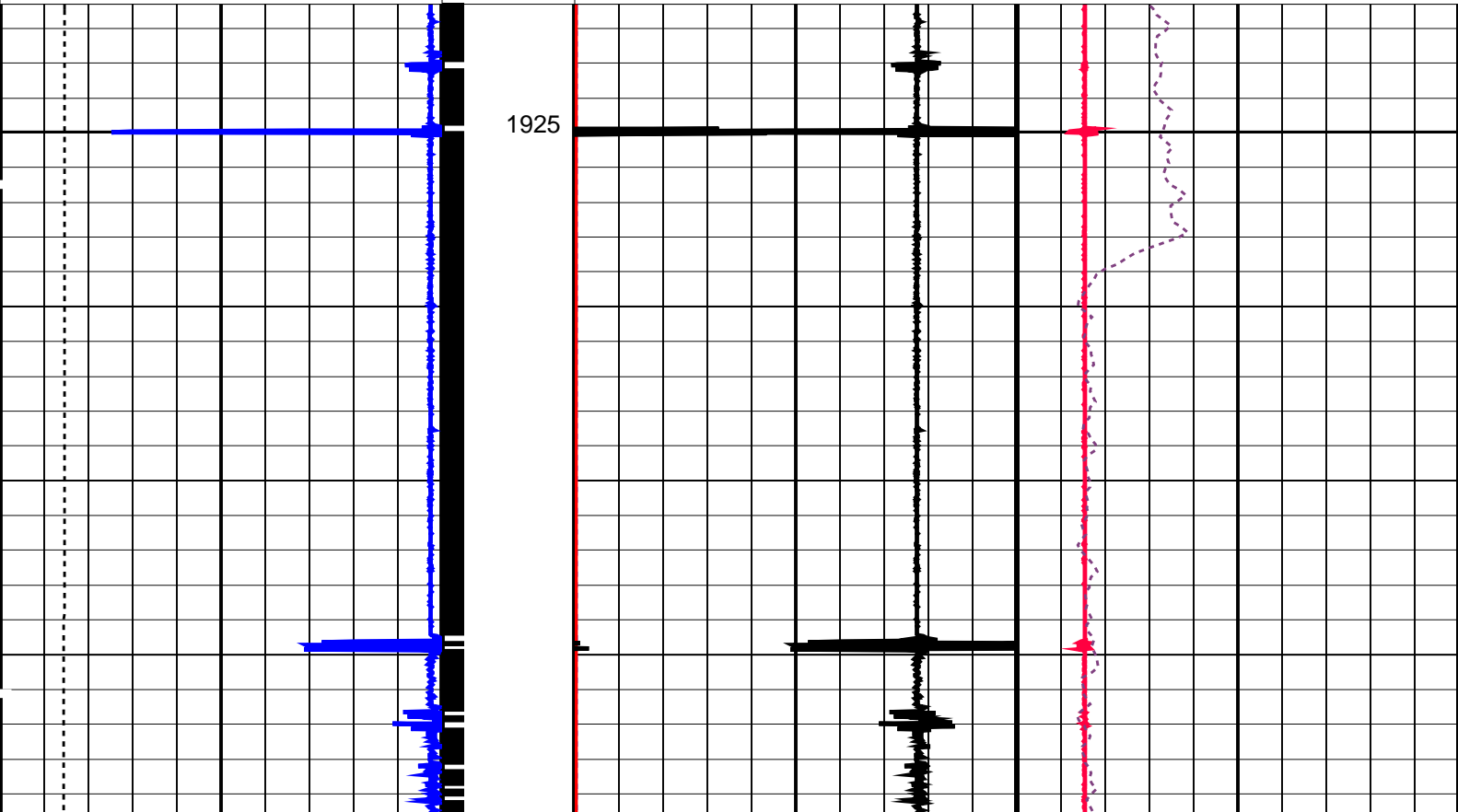
PIP SUMMARY

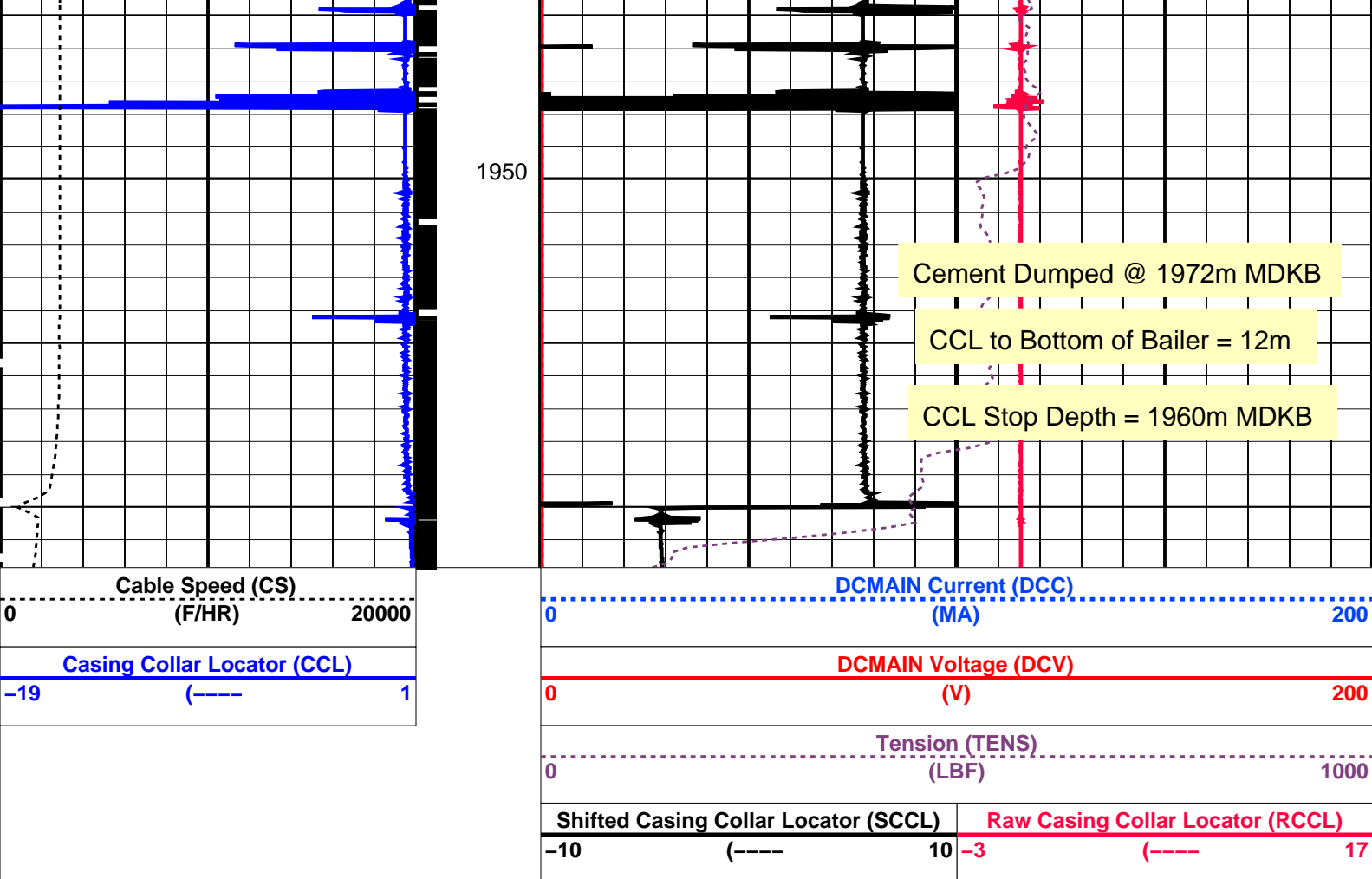
└─ Casing Collars

Time Mark Every 60 S

Casing Collar Locator (CCL)		Shifted Casing Collar Locator (SCCL)	Raw Casing Collar Locator (RCCL)
-19	(----	10	-3
1			17
Tension (TENS)			
0		1000	
DCMAIN Voltage (DCV)			
0		200	
DCMAIN Current (DCC)			
0		200	

Cable Speed (CS)	
0	20000
(F/HR)	





PIP SUMMARY

└─ Casing Collars

Time Mark Every 60 S

Parameters

DLIS Name	Description	Value
CCLD	CCL-L: Casing Collar Locator	12 IN
CCLT	CCL reset delay	0.3 V
	CCL Detection Level	

Format: PERFO Vertical Scale: 1:200 Graphics File Created: 09-Mar-2008 13:51

OP System Version: 15C0-309

MCM

SHM_GUN SRPC-3546-Q1_2008_OP15 CCL-L SRPC-3546-Q1_2008_OP15

Output DLIS Files

DEFAULT PERFO_056LUP FN:55 PRODUCER 09-Mar-2008 13:51

Schlumberger

Water Dump Pass

Output DLIS Files

DEFAULT PERFO_053LUP FN:52 PRODUCER 09-Mar-2008 12:43 1962.0 M 1920.1 M

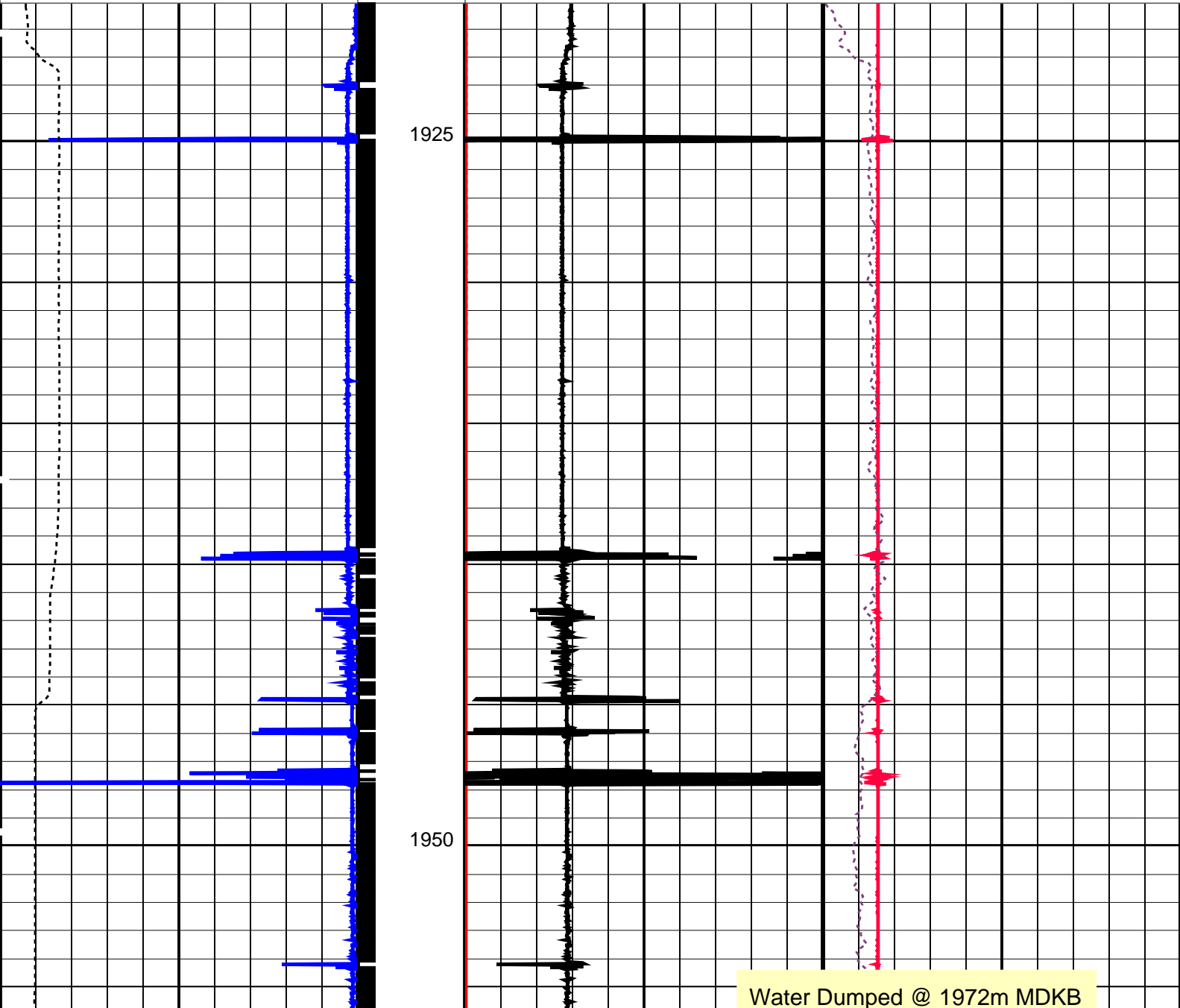
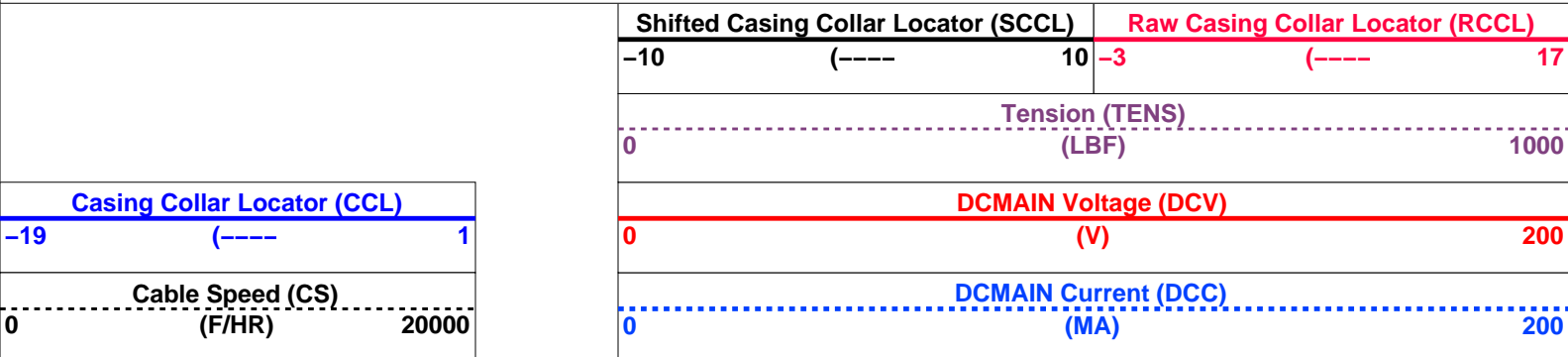
OP System Version: 15C0-309
MCM

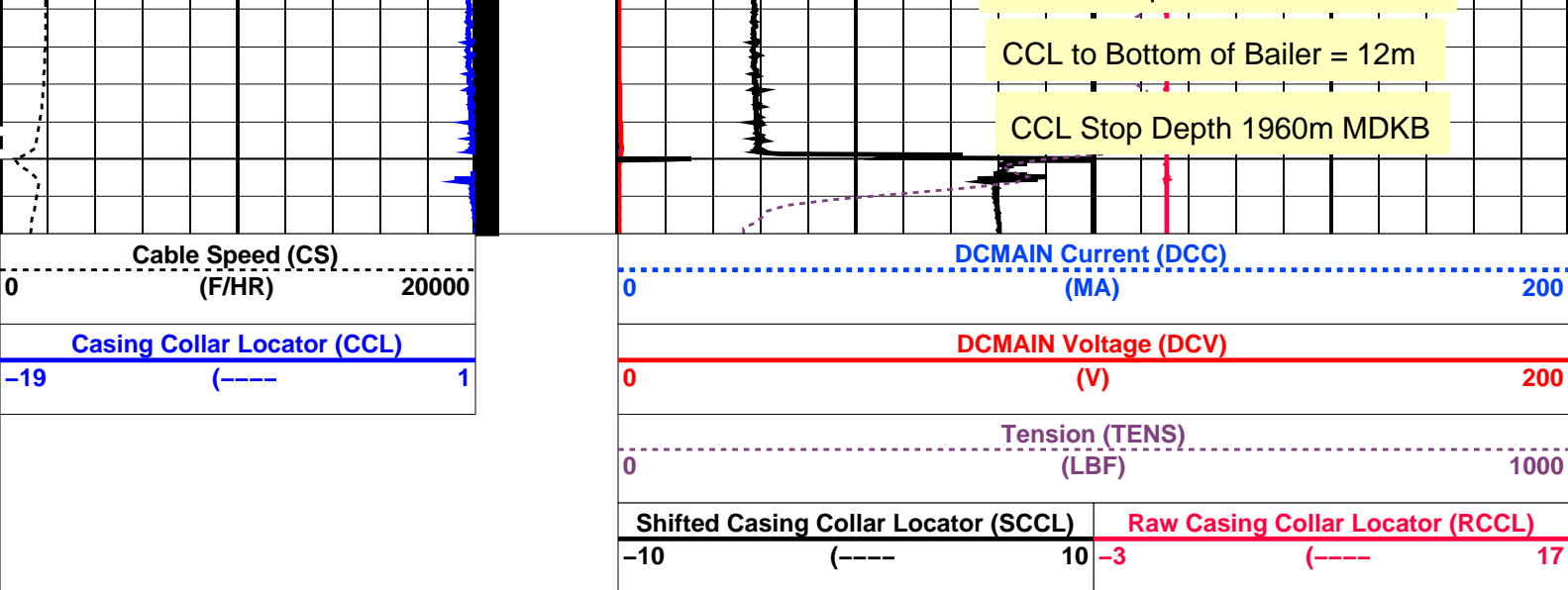
SHM_GUN SRPC-3546-Q1_2008_OP15 CCL-L SRPC-3546-Q1_2008_OP15

PIP SUMMARY

└─ Casing Collars

Time Mark Every 60 S





PIP SUMMARY

← Casing Collars

Time Mark Every 60 S

Parameters

DLIS Name	Description	Value
CCL-L: Casing Collar Locator		
CCLD	CCL reset delay	12 IN
CCLT	CCL Detection Level	0.3 V

Format: PERFO Vertical Scale: 1:200 Graphics File Created: 09-Mar-2008 12:43

OP System Version: 15C0-309

MCM

SHM_GUN SRPC-3546-Q1_2008_OP15 CCL-L SRPC-3546-Q1_2008_OP15

Output DLIS Files

DEFAULT PERFO_053LUP FN:52 PRODUCER 09-Mar-2008 12:43

Schlumberger

Log Away from Plug Setting

MAXIS Field Log

Output DLIS Files

DEFAULT MPBT_048LUP FN:47 PRODUCER 09-Mar-2008 11:09 1965.4 M 1920.1 M

OP System Version: 15C0-309

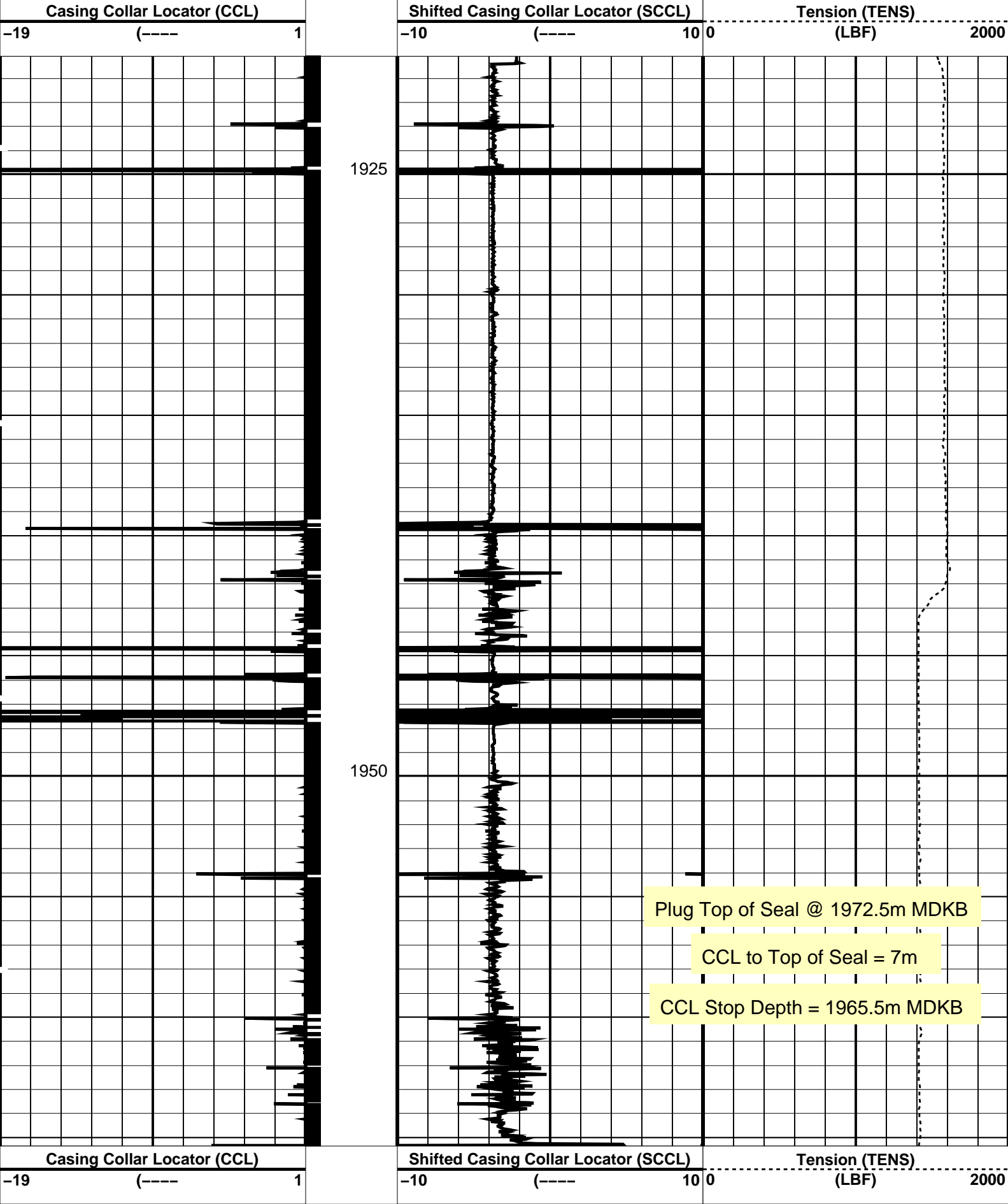
MCM

MPEX-7" 26lb/ft MPSU-CA SRPC-3546-Q1_2008_OP15
CCL-L SRPC-3546-Q1_2008_OP15

PIP SUMMARY

← Casing Collars

Time Mark Every 60 S




PIP SUMMARY

Time Mark Every 60 S

└ Casing Collars

Parameters		
DLIS Name	Description	Value

DLIS Name		Description		Value	
CCL-L: Casing Collar Locator		CCL reset delay		12	IN
CCLD		CCL Detection Level		0.3	V
CCLT					
Format: PERFO		Vertical Scale: 1:200		Graphics File Created: 09-Mar-2008 11:09	
OP System Version: 15C0-309					
MCM					
MPEX-7"	26lb/ft	MPSU-CA	SRPC-3546-Q1_2008_OP15		
CCL-L	SRPC-3546-Q1_2008_OP15				
Output DLIS Files					
DEFAULT	MPBT_048LUP	FN:47	PRODUCER	09-Mar-2008 11:09	



7" Posiset Plug
Set @ 1972.5m MDKB

MAXIS Field Log

Output DLIS Files					
DEFAULT	MPBT_047LUP	FN:46	PRODUCER	09-Mar-2008 10:45	

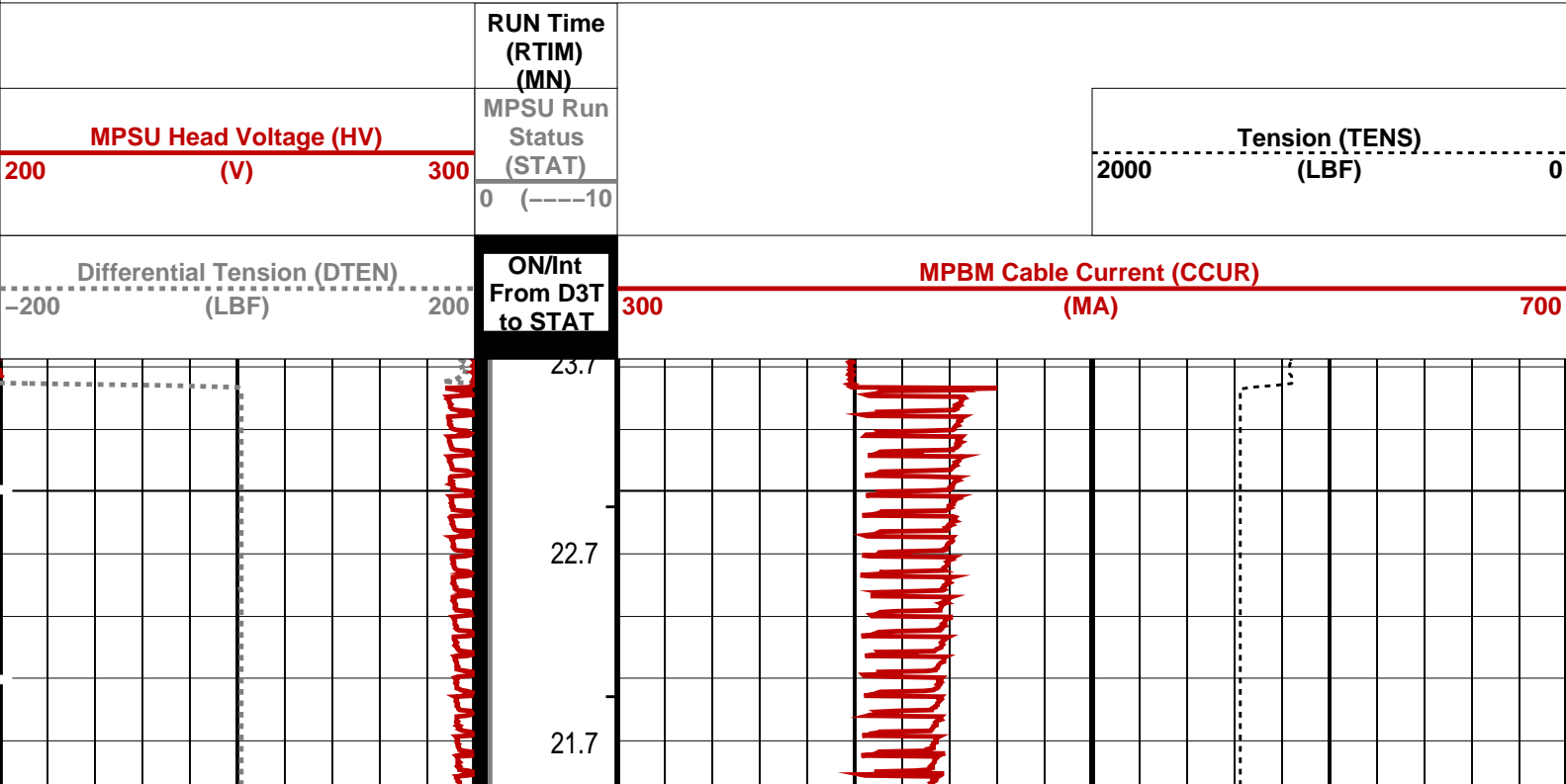
OP System Version: 15C0-309					
MCM					
MPEX-7"	26lb/ft	MPSU-CA	SRPC-3546-Q1_2008_OP15		
CCL-L	SRPC-3546-Q1_2008_OP15				

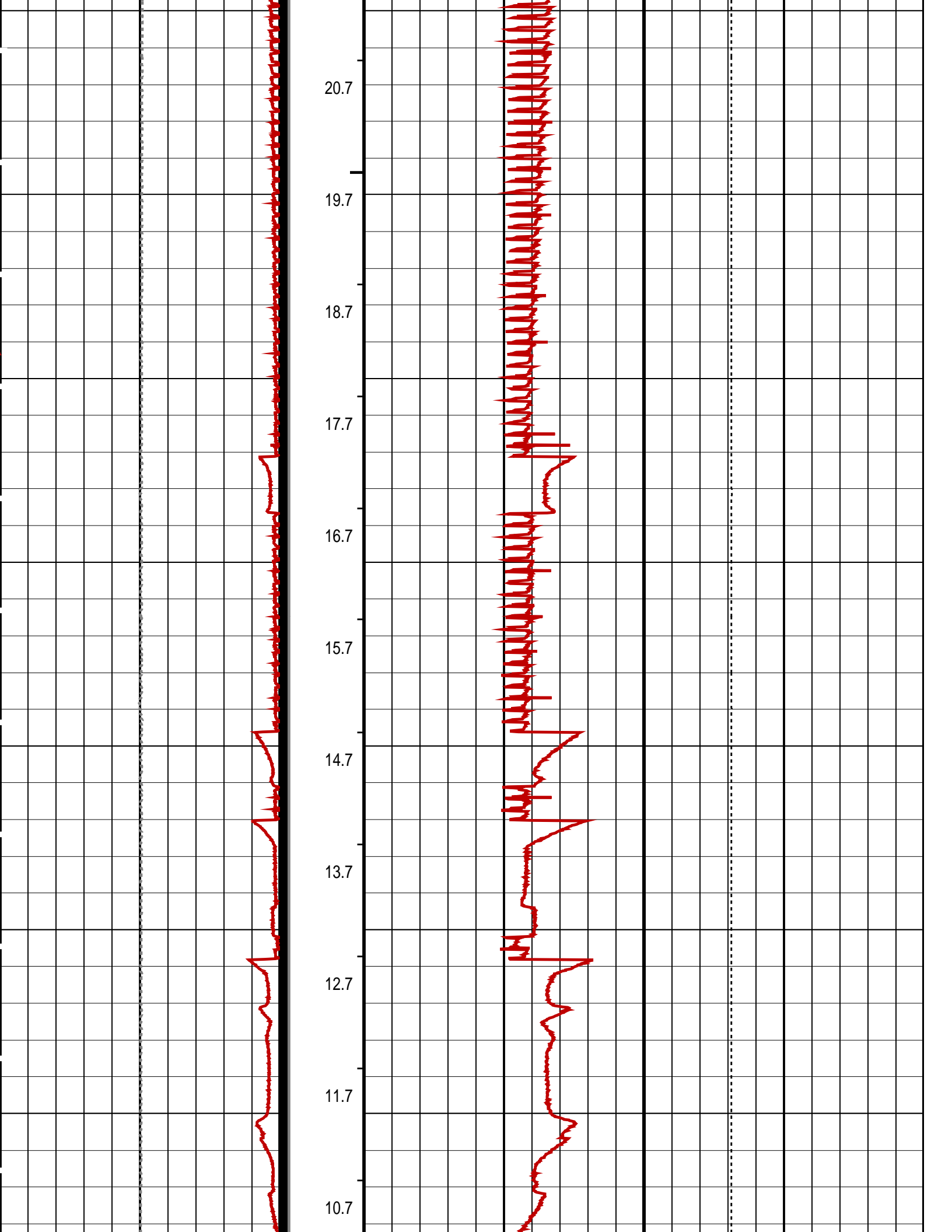
PIP SUMMARY

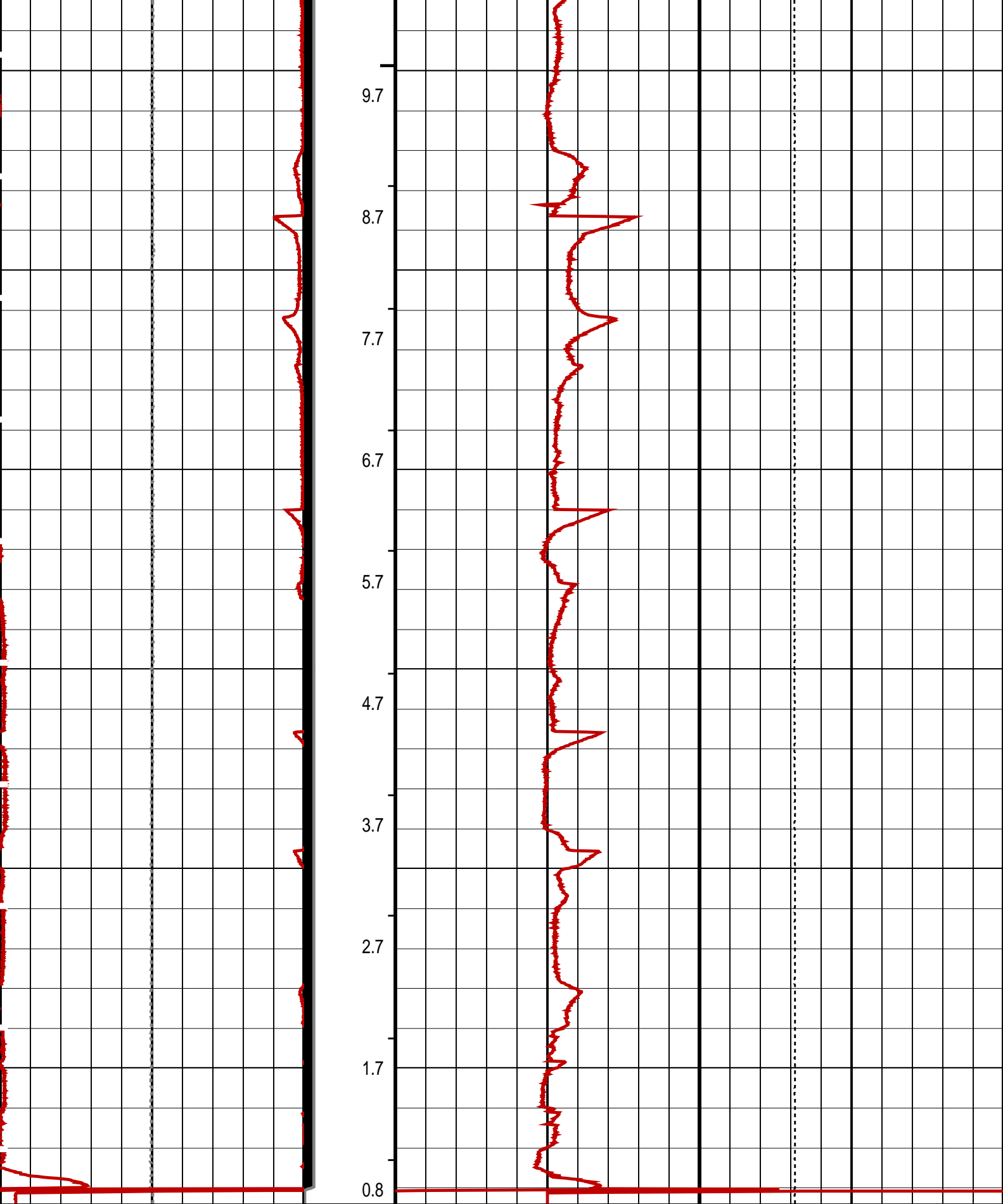
⊣ MPSU Run Time Every 1 MN

⊣ MPSU Run Time Every 10 MN

Time Mark Every 60 S








Differential Tension (DTEN) (LBF)		ON/Int From D3T to STAT	MPBM Cable Current (CCUR) (MA)	
-200	200		300	700
MPSU Head Voltage (HV) (V)		MPSU Run Status (STAT)	Tension (TENS) (LBF)	
0	300		0	2000

	0 (----10	2000 (LBF)
	RUN Time (RTIM) (MN)	
PIP SUMMARY		
└ MPSU Run Time Every 1 MN		
└ MPSU Run Time Every 10 MN		
Time Mark Every 60 S		

Parameters		
DLIS Name	Description	Value
IPUMP	MPSU-CA: MECHANICAL PLUGBACK SETTING UNIT Intensifier Pump	TRUE
Format: MPBT Vertical Scale: 1:600		Graphics File Created: 09-Mar-2008 10:45
OP System Version: 15C0-309		
MCM		
MPEX-7" CCL-L	26lb/ft SRPC-3546-Q1_2008_OP15	MPSU-CA SRPC-3546-Q1_2008_OP15
Output DLIS Files		
DEFAULT	MPBT_047LUP	FN:46 PRODUCER 09-Mar-2008 10:45

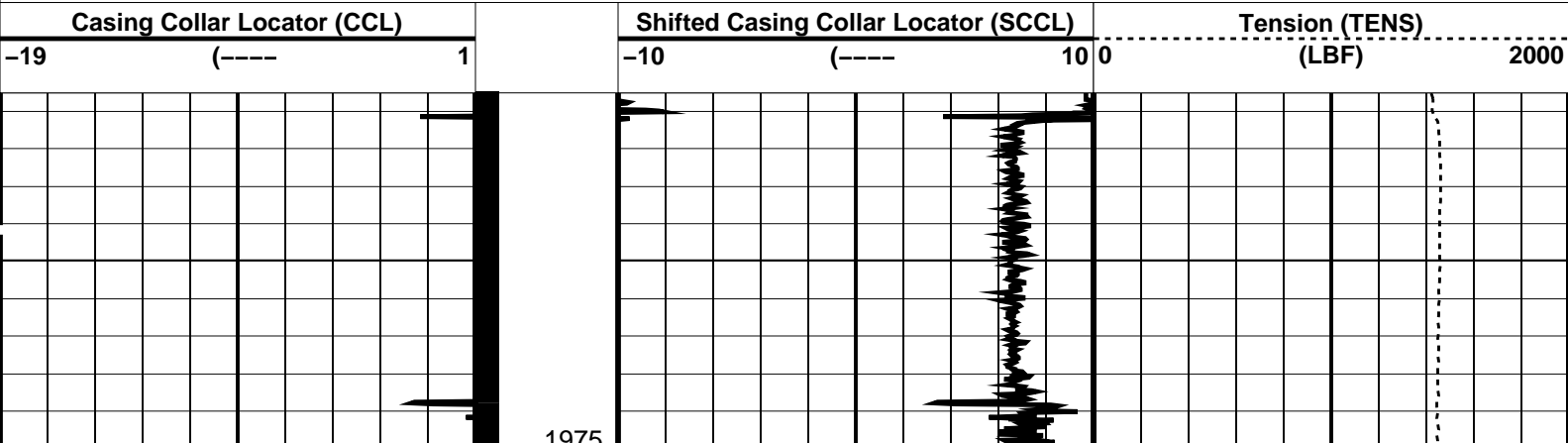


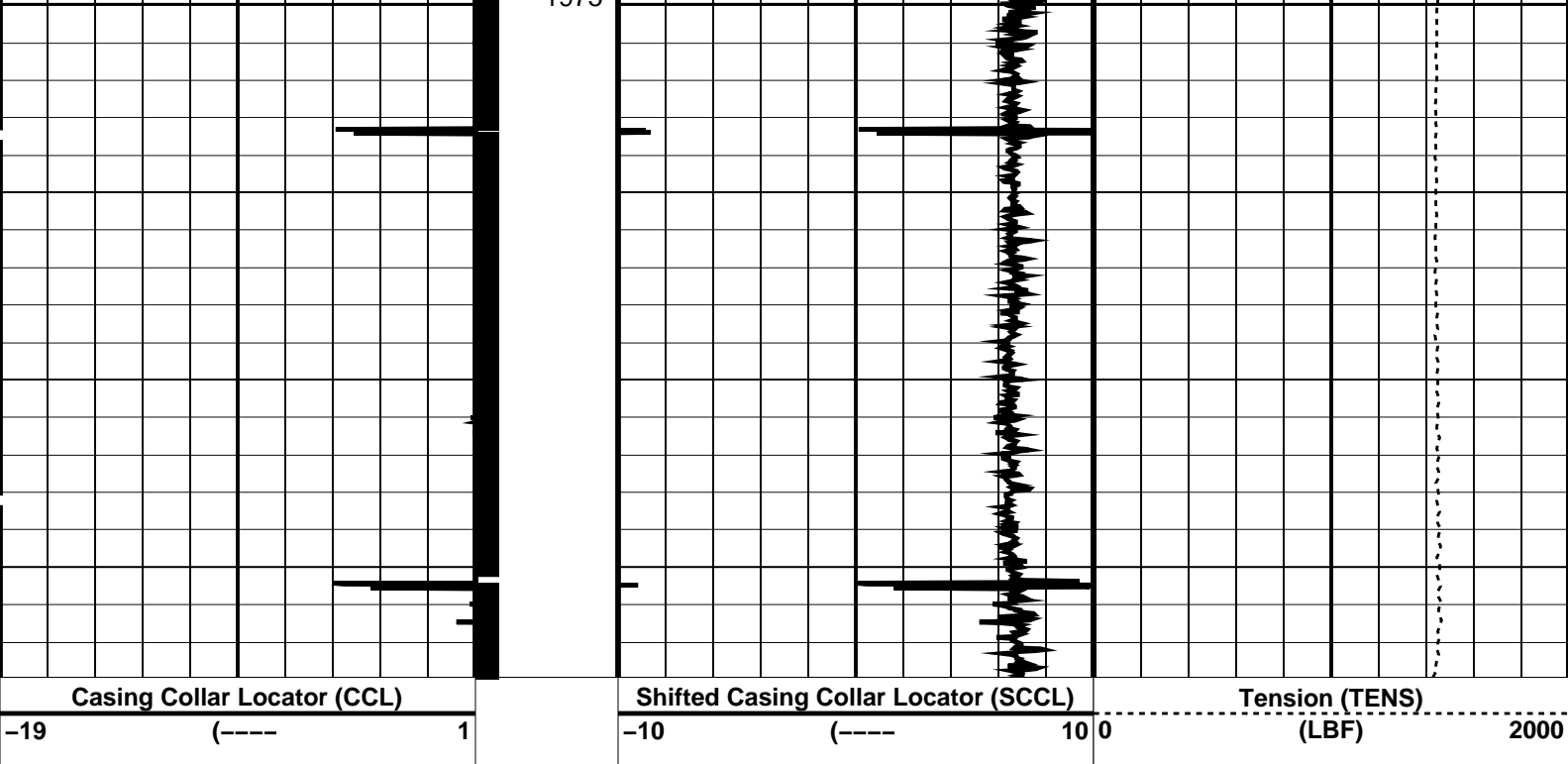
Plug Setting Pass

MAXIS Field Log

Output DLIS Files		
DEFAULT	MPBT_046LUP	FN:45 PRODUCER 09-Mar-2008 10:40 1992.9 M 1965.5 M
OP System Version: 15C0-309		
MCM		
MPEX-7" CCL-L	26lb/ft SRPC-3546-Q1_2008_OP15	MPSU-CA SRPC-3546-Q1_2008_OP15

PIP SUMMARY		
└ Casing Collars		
Time Mark Every 60 S		





PIP SUMMARY

← Casing Collars

Time Mark Every 60 S

Parameters		
DLIS Name	Description	Value
CCLD	CCL-L: Casing Collar Locator	12 IN
CCLT	CCL reset delay	0.3 V
	CCL Detection Level	


Format: PERFO Vertical Scale: 1:200 Graphics File Created: 09-Mar-2008 10:40

OP System Version: 15C0-309
MCM

MPEX-7" 26lb/ft MPSU-CA SRPC-3546-Q1_2008_OP15
CCL-L SRPC-3546-Q1_2008_OP15

Output DLIS Files

DEFAULT MPBT_046LUP FN:45 PRODUCER 09-Mar-2008 10:40



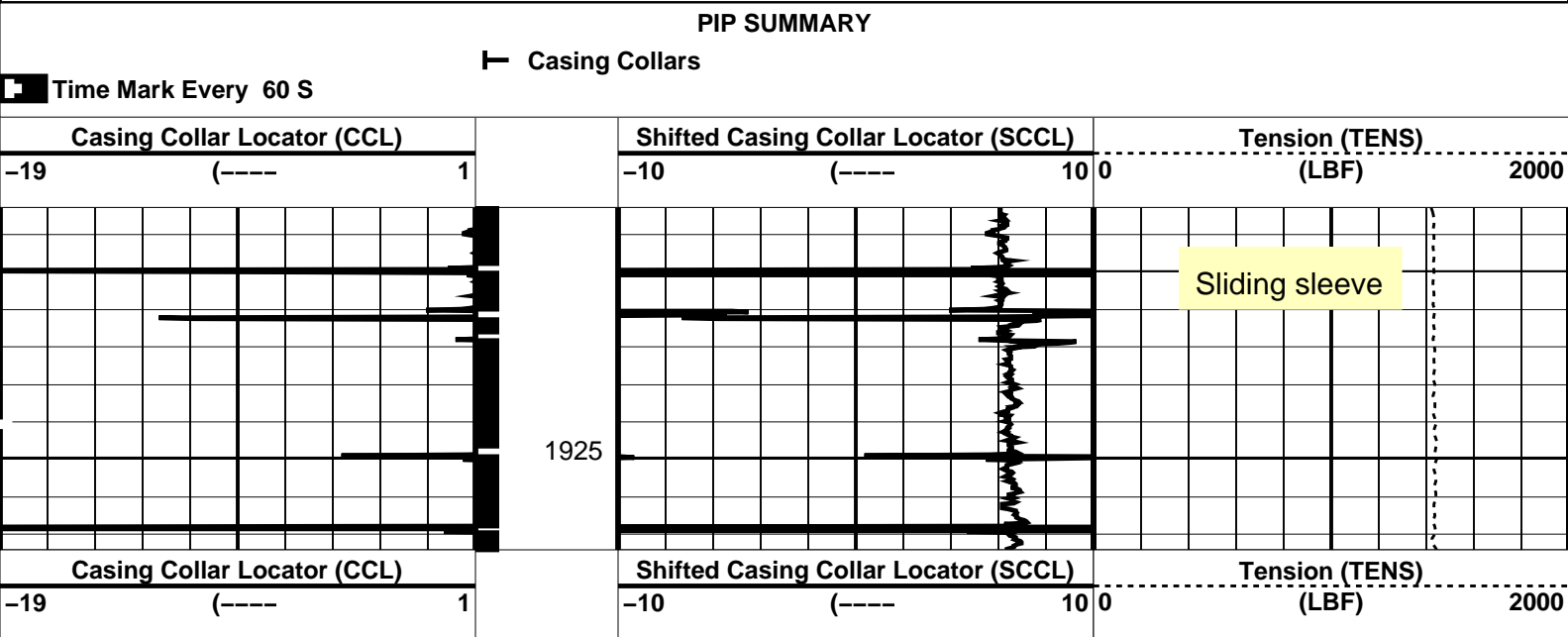
Plug Correlation Pass

MAXIS Field Log

Output DLIS Files

DEFAULT MPBT_041LUP FN:40 PRODUCER 09-Mar-2008 10:19 1927.4 M 1918.3 M

OP System Version: 15C0-309
MCM



PIP SUMMARY

Time Mark Every 60 S

Parameters		
DLIS Name	Description	Value
CCL-L: Casing Collar Locator		
CCLD	CCL reset delay	12 IN
CCLT	CCL Detection Level	0.3 V

Format: PERFO Vertical Scale: 1:200 Graphics File Created: 09-Mar-2008 10:19


OP System Version: 15C0-309

MCM

MPEX-7" 26lb/ft MPSU-CA SRPC-3546-Q1_2008_OP15

CCL-L SRPC-3546-Q1_2008_OP15

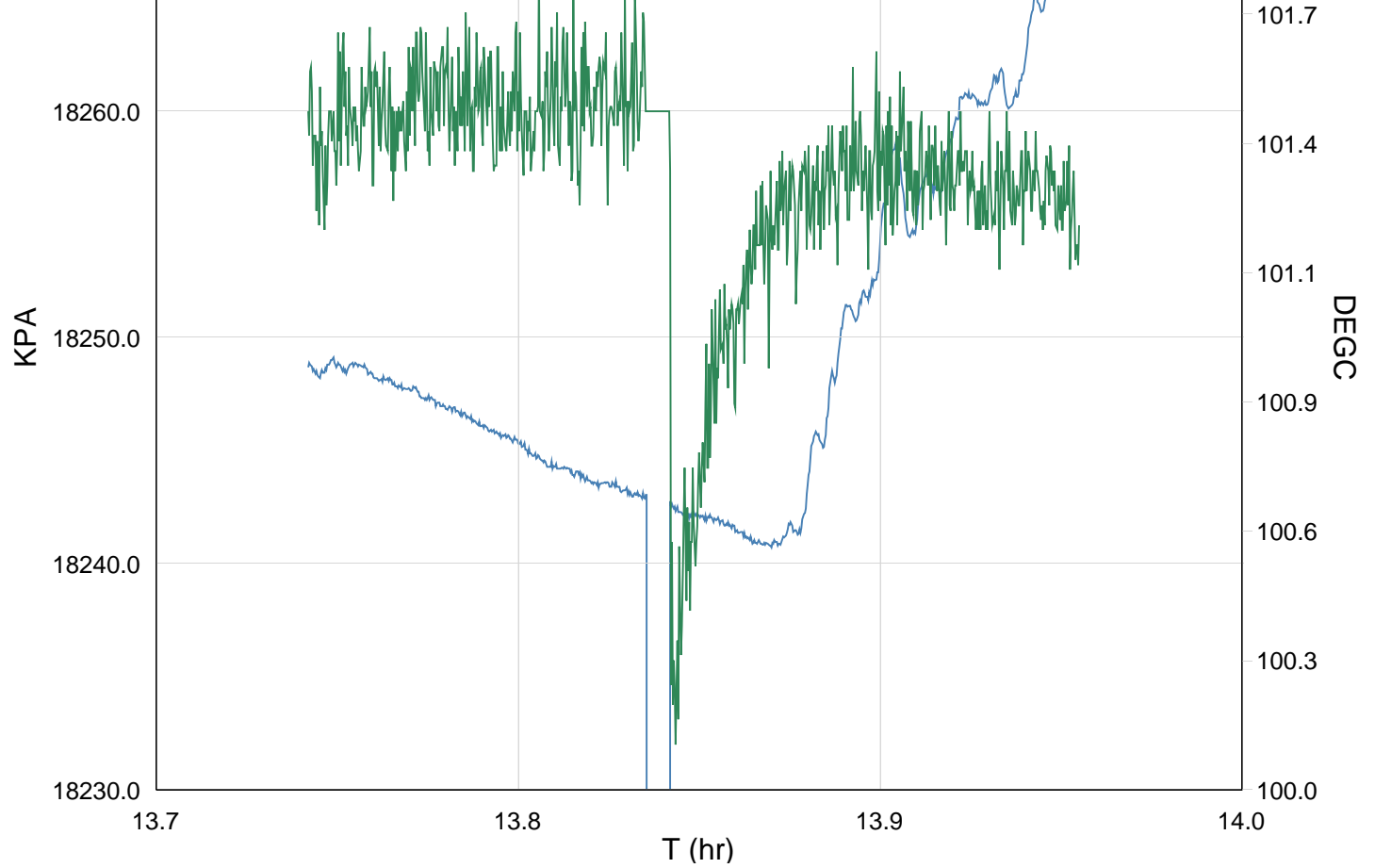
Output DLIS Files			
DEFAULT	MPBT_041LUP	FN:40 PRODUCER	09-Mar-2008 10:19



Gun # 1 Fired @
1960.1m to 1963.8m MDKB

MAXIS Field Log





TIME	KPA	PSIA	DEGF
2370.0	18151.5753	2632.6675	212.4600
2400.0	18255.0873	2647.6807	213.6611
2430.0	18260.2475	2648.4291	213.6901
2460.0	18262.4115	2648.7428	213.6347
2490.0	18258.9454	2648.2403	213.5954
2520.0	18260.6248	2648.4838	213.5245
2550.0	18261.0143	2648.5402	213.4659
2580.0	18259.2937	2648.2907	213.4077
2610.0	18260.5470	2648.4726	213.3343
2640.0	18261.1141	2648.5548	213.2801
2670.0	18260.8966	2648.5233	213.2207
2700.0	18260.9772	2648.5349	213.1904
2730.0	18259.9902	2648.3918	106.2993
2760.0	18238.1315	2645.2215	213.0974
2790.0	18247.3244	2646.5546	213.0765
2820.0	18253.2031	2647.4075	213.0035
2850.0	18257.3451	2648.0081	212.9836
2880.0	18254.4896	2647.5940	213.1865
2910.0	18255.8932	2647.7974	213.6567
2940.0	18255.9629	2647.8075	213.9640
2970.0	18255.8647	2647.7933	214.5600
3000.0	18258.0111	2648.1047	214.4567
3030.0	18258.4506	2648.1684	214.6702
3060.0	18255.2969	2647.7111	214.7328
3090.0	18255.9336	2647.8033	214.7554
3120.0	18256.8775	2647.9402	215.2555
3150.0	18253.7624	2647.4885	215.3005



Gun#1 Shooting Pass

MAXIS Field Log

Company: Esso Australia Pty Ltd.

Well: B-2

Output DLIS Files

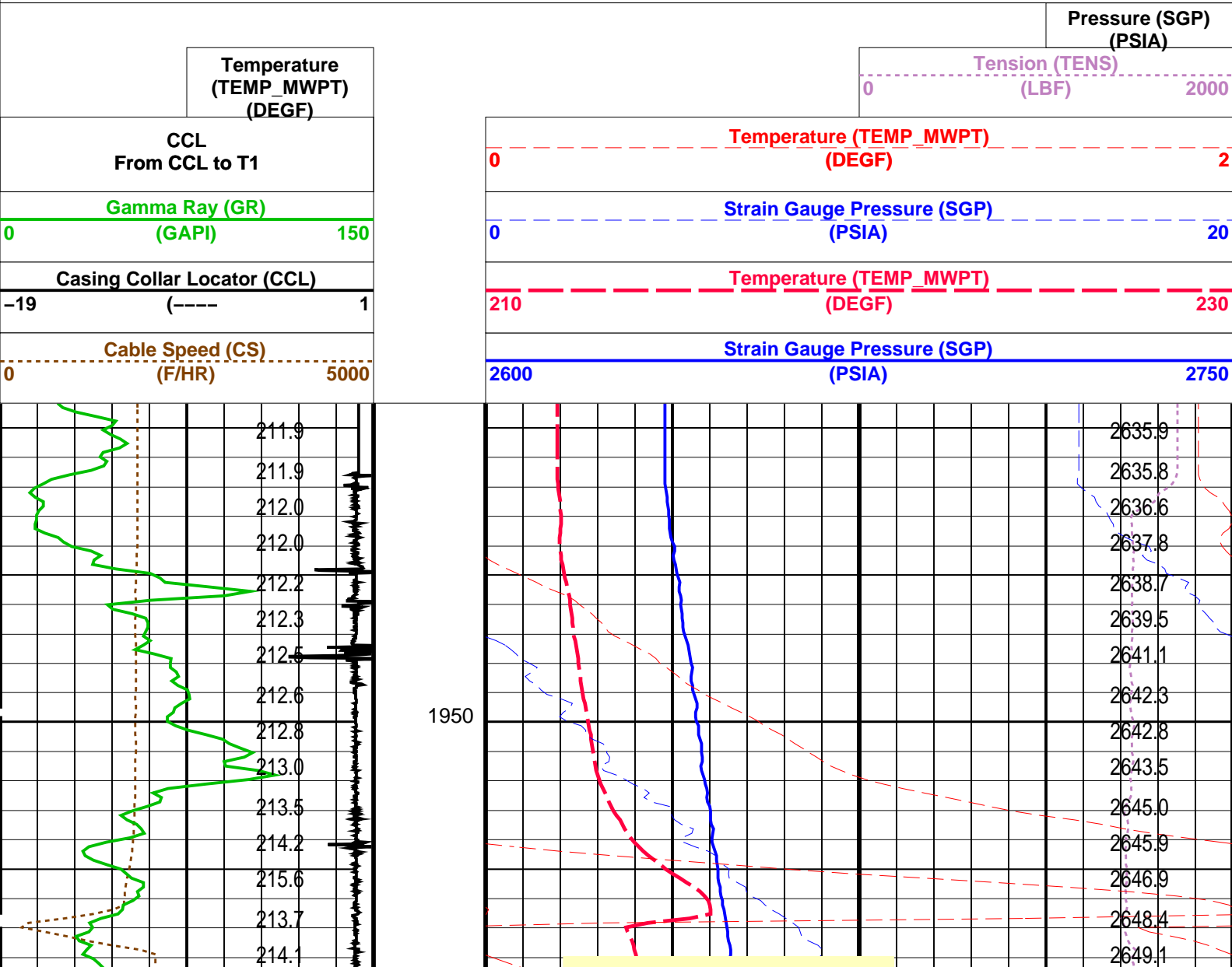
DEFAULT PERFO_029LUP FN:28 PRODUCER 08-Mar-2008 13:38

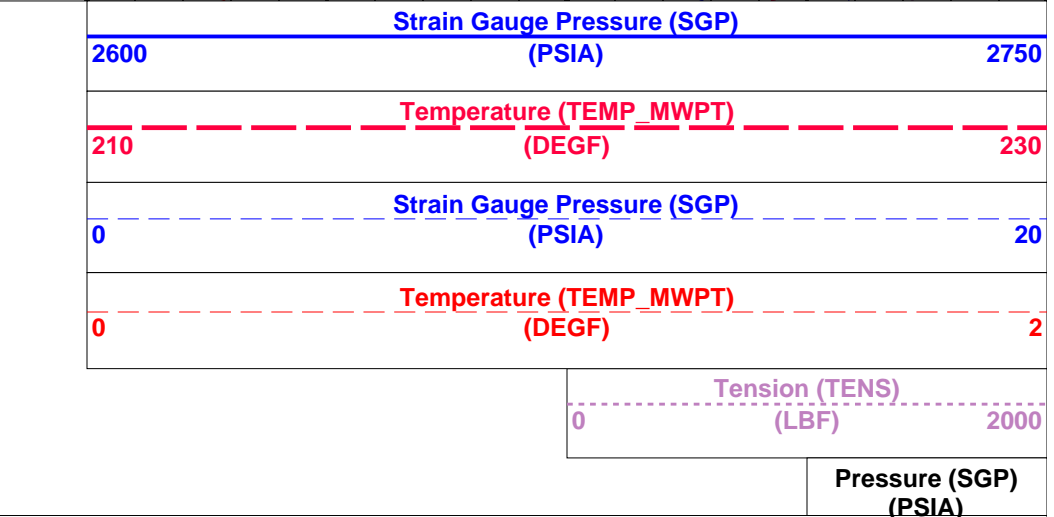
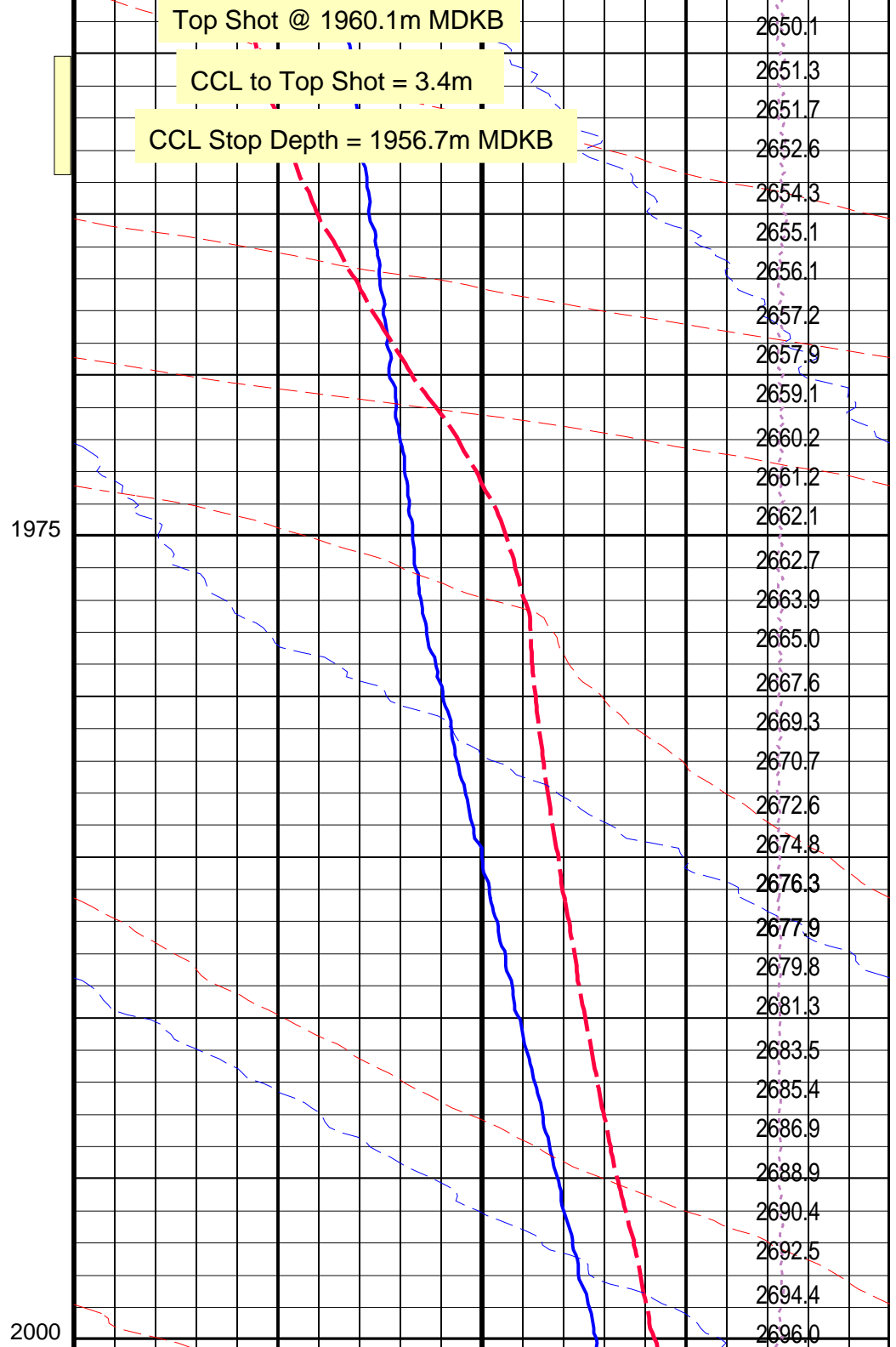
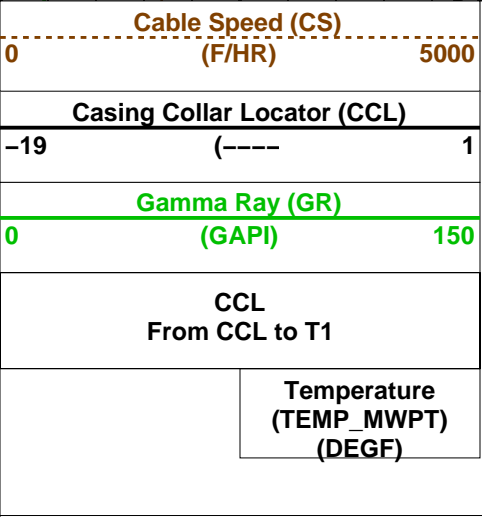
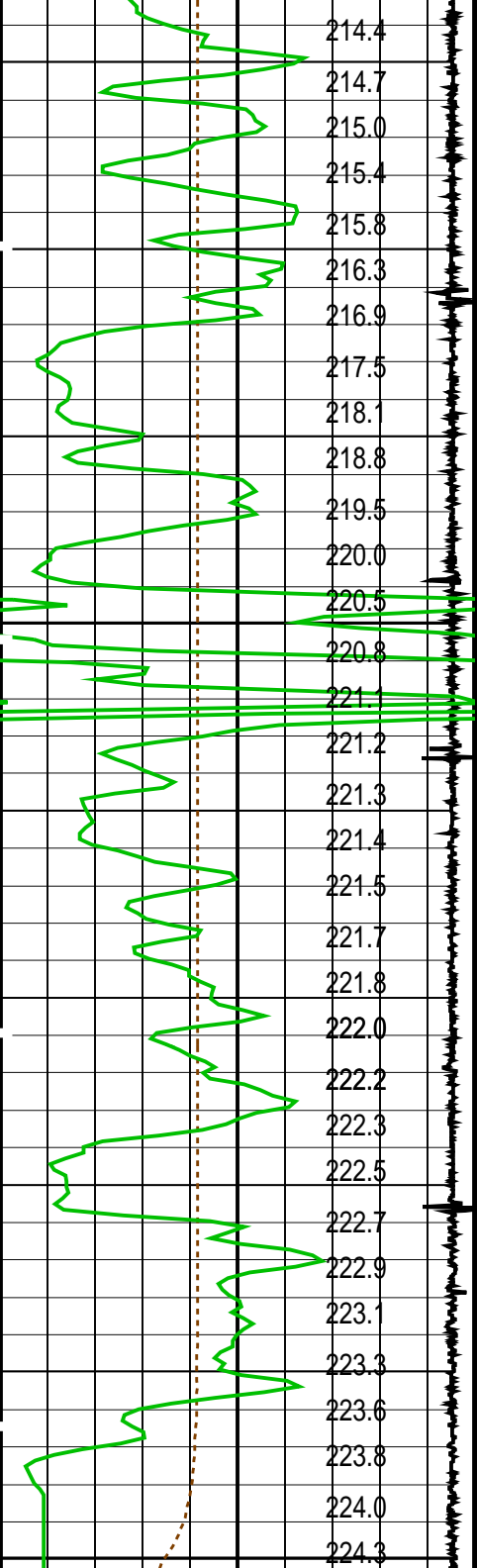
OP System Version: 15C0-309
MCM

MWP_GUN SRPC-3546-Q1_2008_OP15 MWPT-CA SRPC-3546-Q1_2008_OP15
MWGT-AA SRPC-3546-Q1_2008_OP15

PIP SUMMARY

Time Mark Every 60 S





Time Mark Every 60 S

Parameters

DLIS Name

Description

Value

MWPT-CA: MEASUREMENT WHILE PERFORATING TOOL

DEVI_FL_CORR

FLD

MWPT_NULL_SOURCE

MWPT_NULL_TEMP

Deviation Angle for Flow Line Correction

Flow Line Density

MWPT NULL Temperature Source

MWPT NULL Temperature

0

1

TEMS

0.0

DEG

G/C3

DEGC

Format: MWP

Vertical Scale: 1:200

Graphics File Created: 08-Mar-2008 13:38

OP System Version: 15C0-309

MCM

MWP_GUN

SRPC-3546-Q1_2008_OP15

MWGT-AA

SRPC-3546-Q1_2008_OP15

MWPT-CA

SRPC-3546-Q1_2008_OP15

Output DLIS Files

DEFAULT

PERFO_029LUP

FN:28

PRODUCER

08-Mar-2008 13:38

Schlumberger

Gun#1 Correlation Pass

MAXIS Field Log

Company: Esso Australia Pty Ltd.

Well: B-2

Output DLIS Files

DEFAULT

PERFO_028LUP

FN:27

PRODUCER

08-Mar-2008 13:26

OP System Version: 15C0-309

MCM

MWP_GUN

SRPC-3546-Q1_2008_OP15

MWGT-AA

SRPC-3546-Q1_2008_OP15

MWPT-CA

SRPC-3546-Q1_2008_OP15

PIP SUMMARY

Time Mark Every 60 S

Temperature (TEMP_MWPT) (DEGF)

CCL From CCL to T1

Gamma Ray (GR) (GAPI)

Casing Collar Locator (CCL)

Cable Speed (CS) (F/HR)

212.6

212.6

Pressure (SGP) (PSIA)

Tension (TENS) (LBF)

Temperature (TEMP_MWPT) (DEGF)

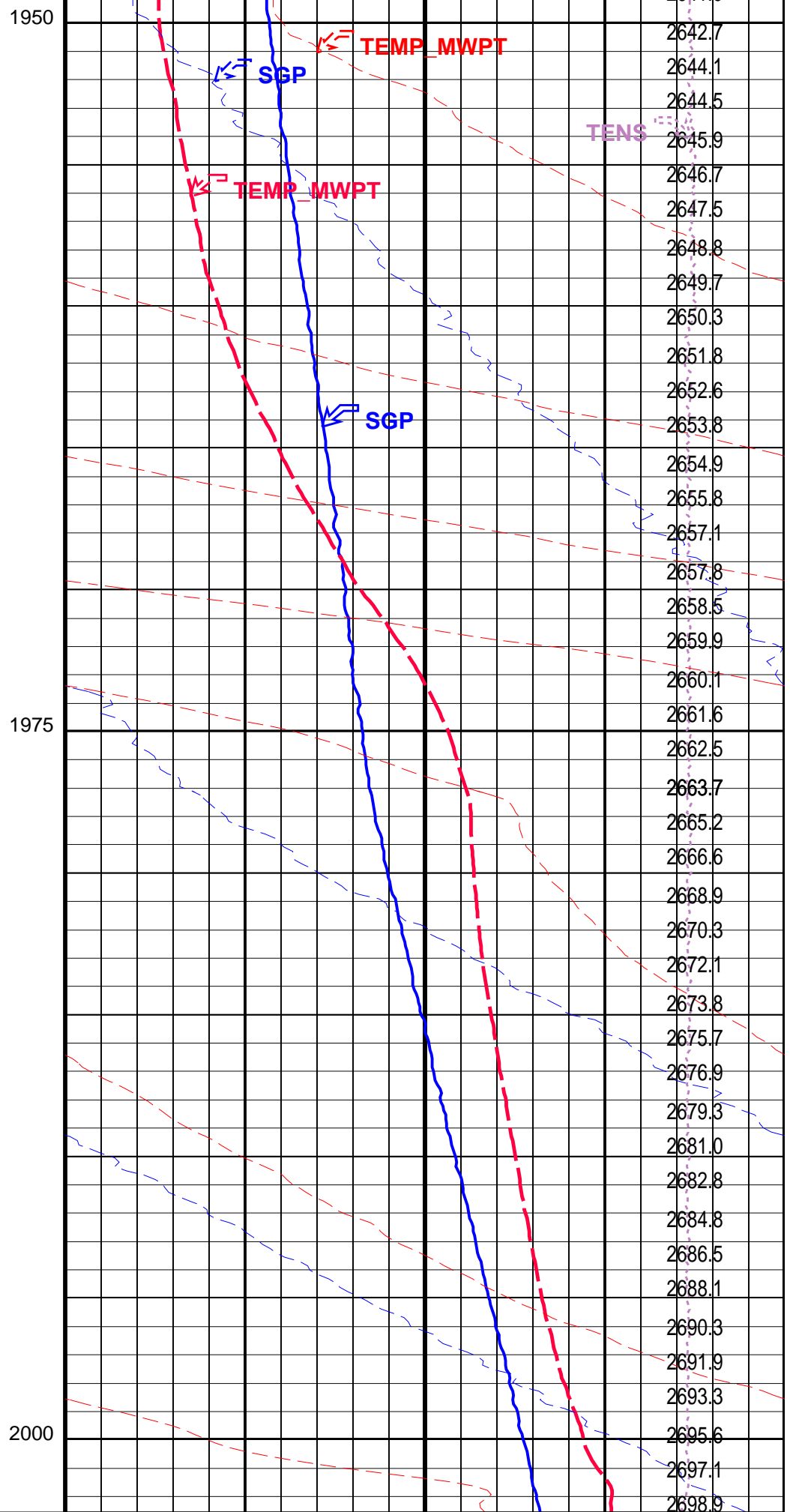
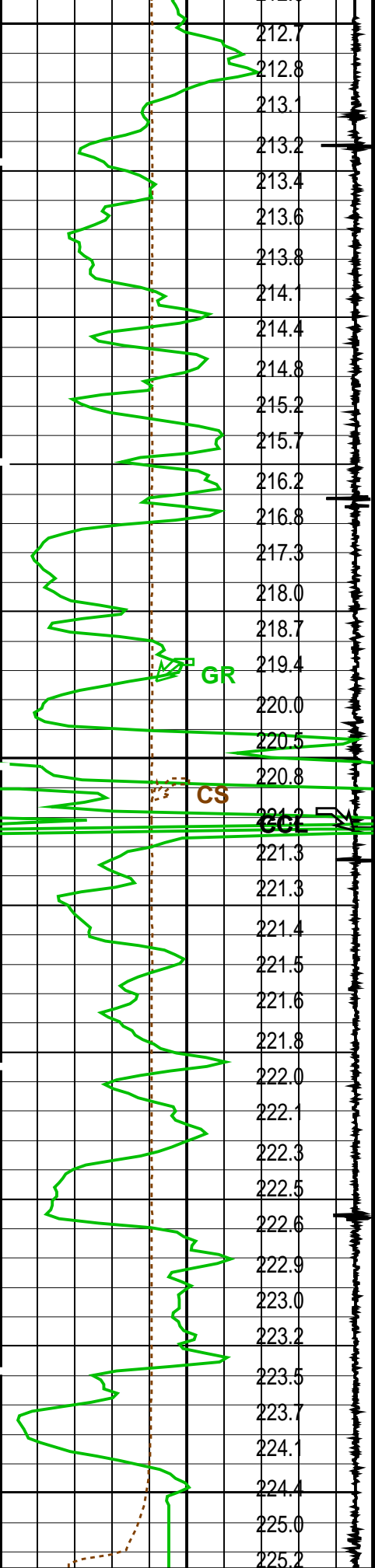
Strain Gauge Pressure (SGP) (PSIA)

Temperature (TEMP_MWPT) (DEGF)

Strain Gauge Pressure (SGP) (PSIA)

2641.9

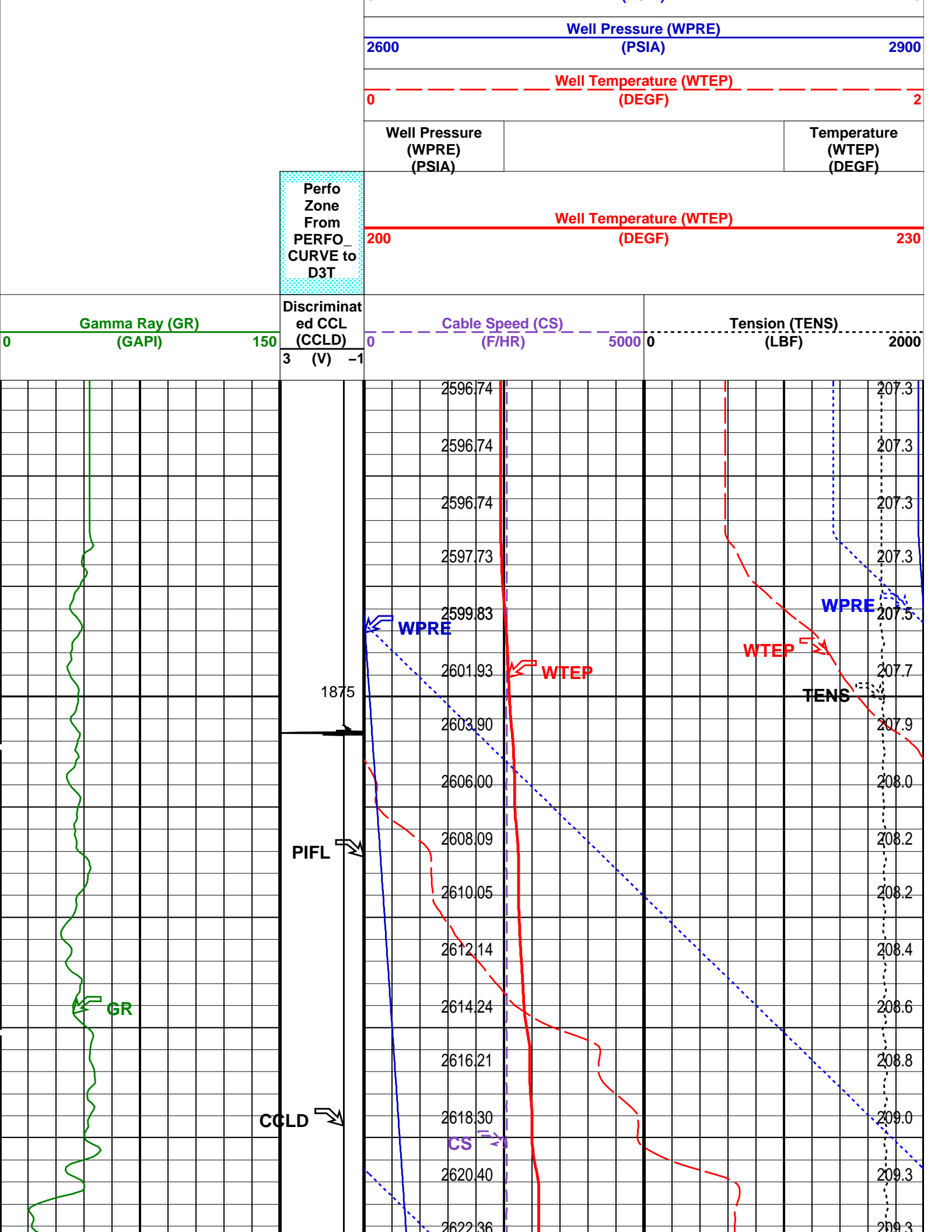
2641.9

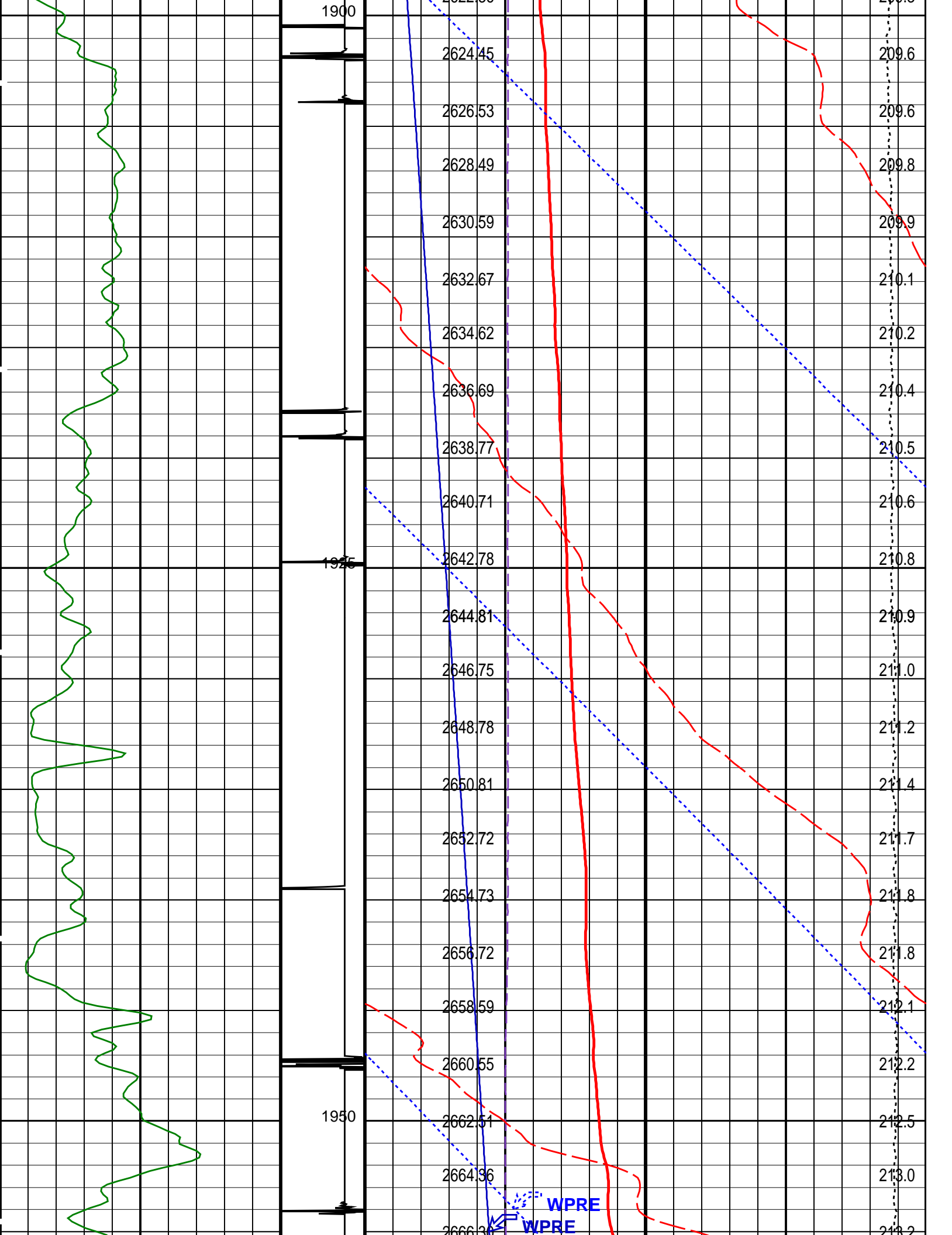


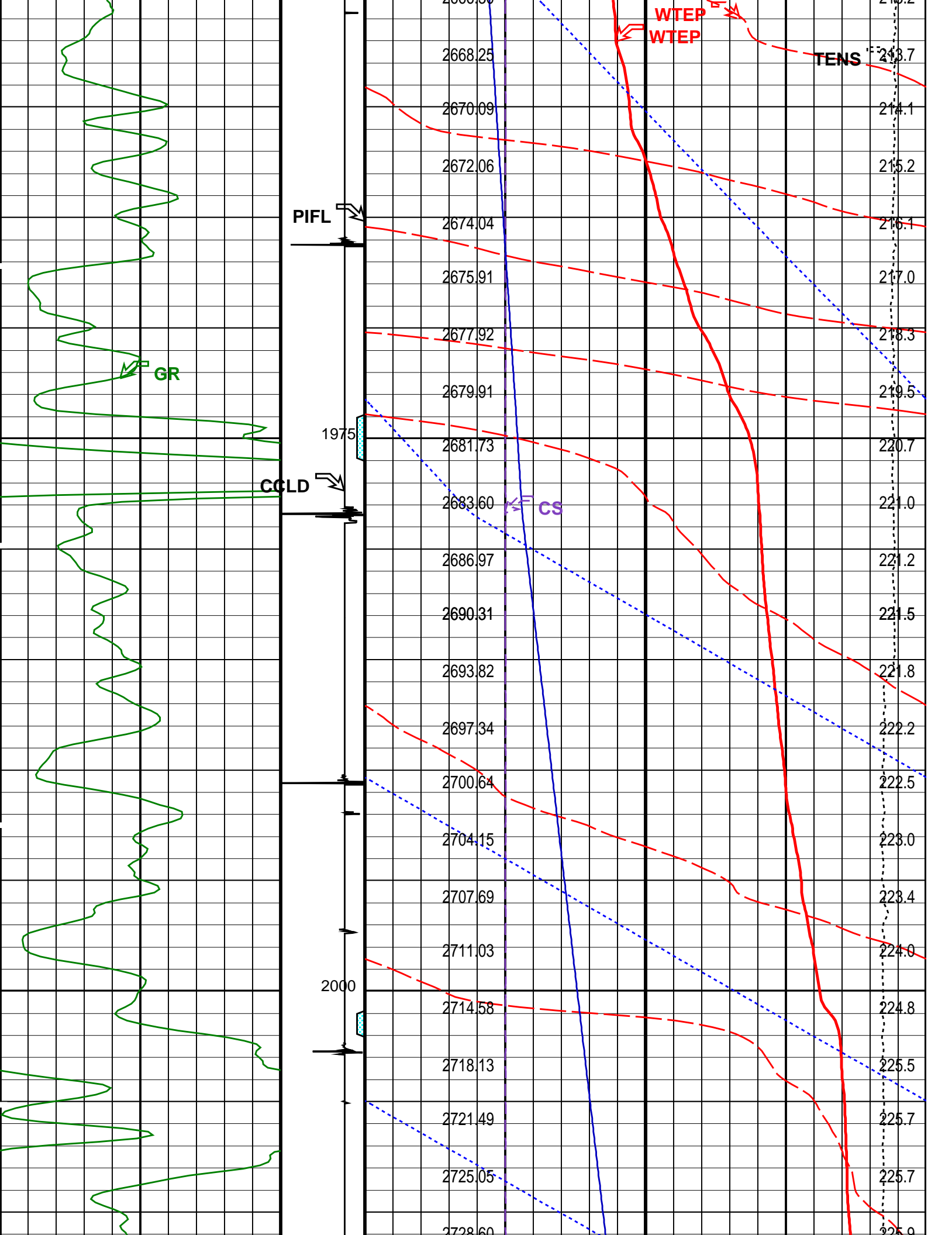
Cable Speed (CS)
(F/HR)

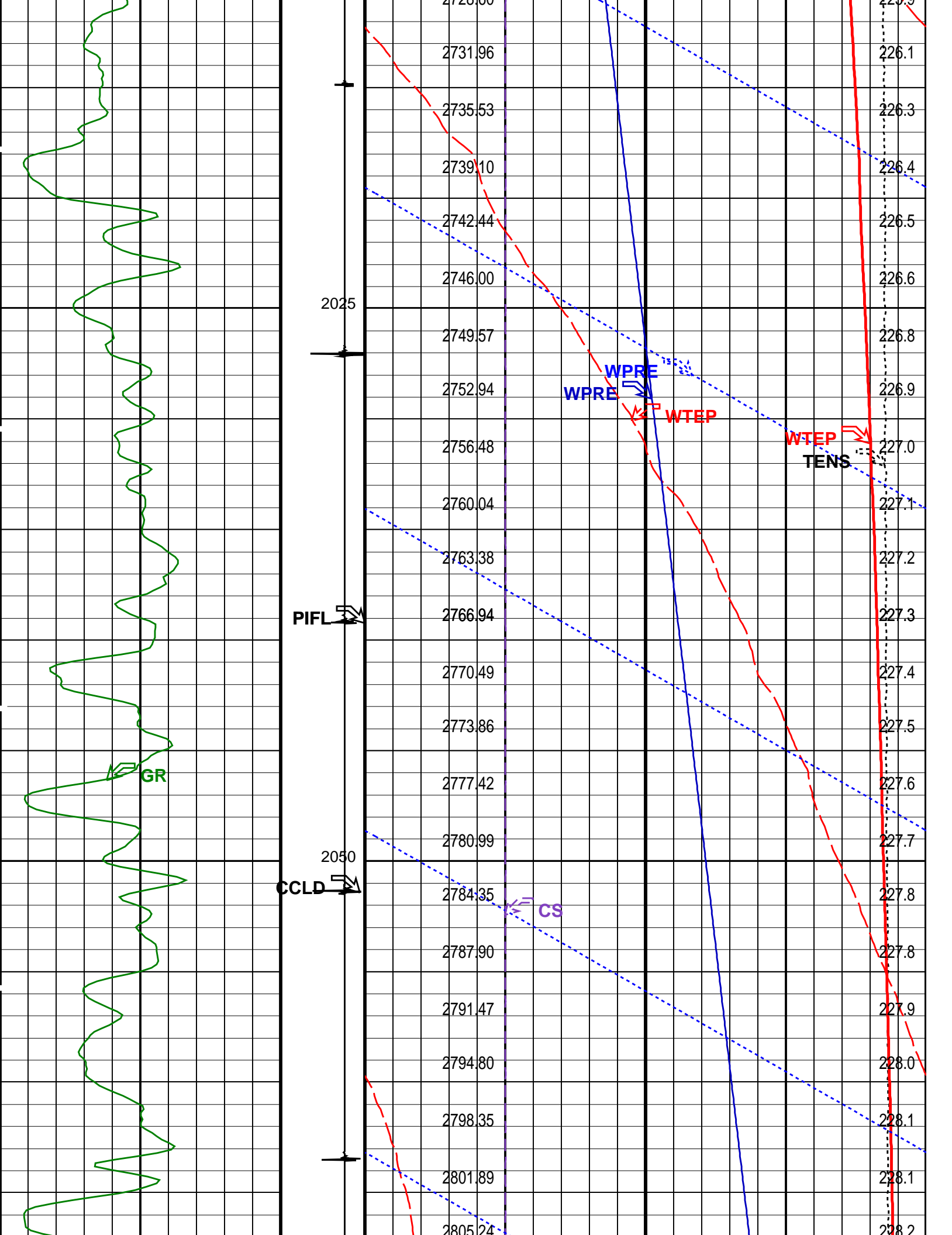
Strain Gauge Pressure (SGP)
(PSIA)

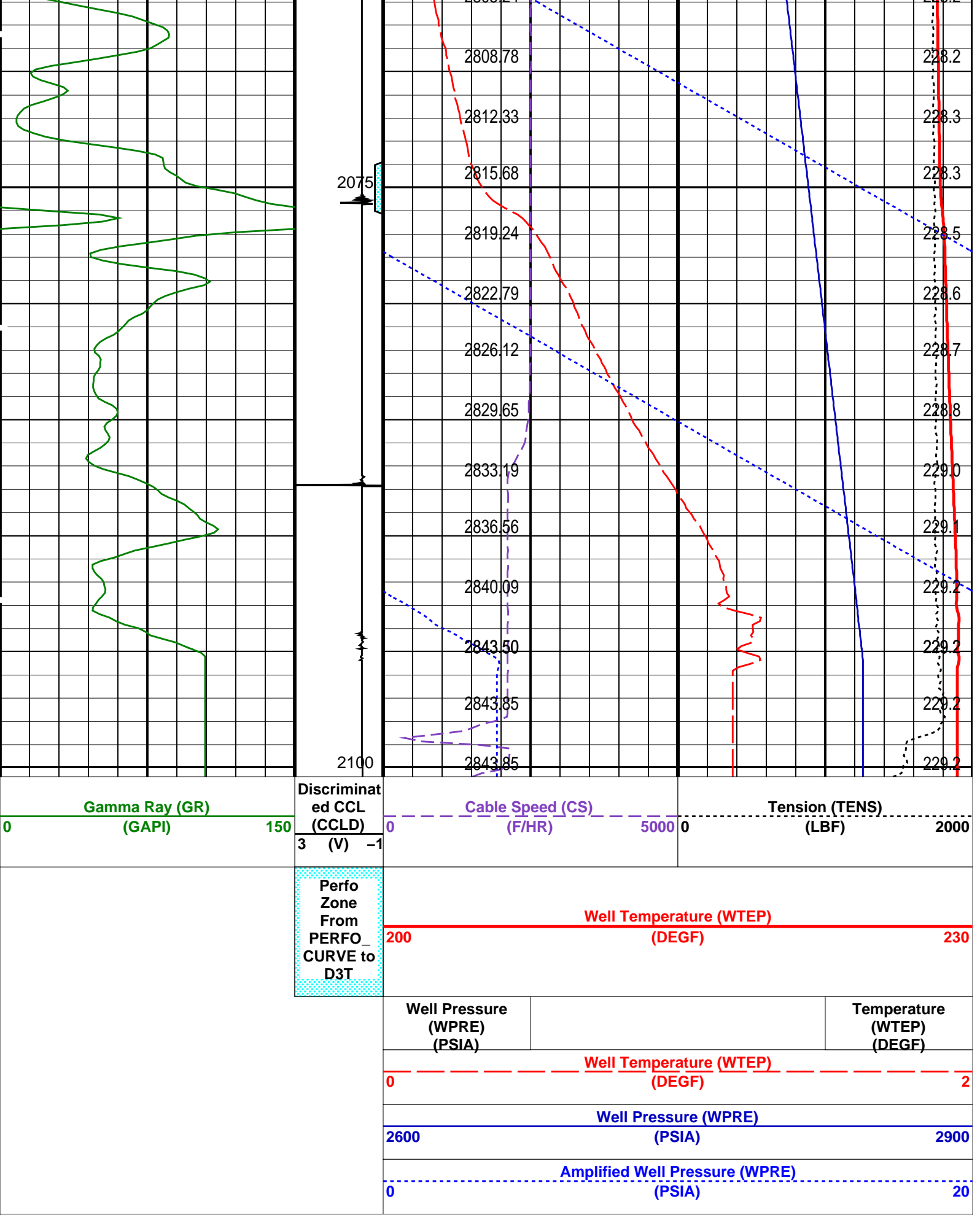
Casing Collar Locator (CCL)		Temperature (TEMP_MWPT) (DEGF)	
-19	(----	210	230
Gamma Ray (GR) (GAPI)		Strain Gauge Pressure (SGP) (PSIA)	
0	150	0	20
CCL From CCL to T1		Temperature (TEMP_MWPT) (DEGF)	
Temperature (TEMP_MWPT) (DEGF)		Tension (TENS) (LBF)	
		0	2000
		Pressure (SGP) (PSIA)	
PIP SUMMARY			
Time Mark Every 60 S			
Parameters			
DLIS Name	Description	Value	
MWPT-CA: MEASUREMENT WHILE PERFORATING TOOL			
DEVI_FL_CORR	Deviation Angle for Flow Line Correction	0	DEG
FLD	Flow Line Density	1	G/C3
MWPT_NULL_SOURCE	MWPT NULL Temperature Source	TEMS	
MWPT_NULL_TEMP	MWPT NULL Temperature	0.0	DEGC
Format: MWP Vertical Scale: 1:200		Graphics File Created: 08-Mar-2008 13:26	
OP System Version: 15C0-309 MCM			
MWP_GUN	SRPC-3546-Q1_2008_OP15	MWPT-CA	SRPC-3546-Q1_2008_OP15
MWGT-AA	SRPC-3546-Q1_2008_OP15		
Output DLIS Files			
DEFAULT	PERFO_028LUP	FN:27 PRODUCER	08-Mar-2008 13:26
Schlumberger			
2.13" Dummy Plug Pass			
MAXIS Field Log			
Company: Esso Australia Pty Ltd.			
Well: B-2			
Input DLIS Files			
DEFAULT	PSP_016LUP	FN:15 PRODUCER	08-Mar-2008 10:01 2100.4 M 1867.2 M
Output DLIS Files			
DEFAULT	PSP_020PUP	FN:19 PRODUCER	08-Mar-2008 10:57 2100.4 M 1860.5 M
OP System Version: 15C0-309 MCM			
PSPT-B	SRPC-3546-Q1_2008_OP15		
PIP SUMMARY			
Time Mark Every 60 S			
		Amplified Well Pressure (WPRE) (PSIA)	
		0	20











Parameters						
DLIS Name		Description			Value	
DO PP	System and Miscellaneous					
	Depth Offset for Playback					
	Playback Processing					
					0.0	M
					NORMAL	

Input DLIS Files						
DEFAULT	PSP_016LUP	FN:15	PRODUCER	08-Mar-2008 10:01	2100.4 M	1867.2 M

Output DLIS Files						
DEFAULT	PSP_020PUP	FN:19	PRODUCER	08-Mar-2008 10:57		

Company:

Esso Australia Pty Ltd.

Schlumberger

Well:

B-2

Field:

Bream B

Rig:

Crane / Prod # 4

Country:

Australia

2-1/8" Phased Powerjet MWPT
Perforation Record
7" Posiset Plug Setting Record