

[illegible]

Company: Esso Australia Pty Ltd.

Well: A-22ST1
Field: Bream A
Rig : Prod4 / Crane Country: Australia

2 1/8" Phased PowerJet Perforation
4 1/2" MPBT Plug
Setting Record

Gippsland		Elev.: K.B. 32.82 m
Basin		G.L. -59 m
Bass Strait		D.F. 32.82 m
Permanent Datum:	M.S.L.	Elev.: 0 m
Log Measured From:	D.F.	32.8 m above Perm. Datum
Drilling Measured From:	D.F.	
State : Victoria	Max. Well Deviation 70 deg	Longitude 147 46'15"E Latitude 038 30'04"S

Logging Date	4-May-2008		
Run Number	2 thru 6		
Depth Driller	3251 m		
Schlumberger Depth	3254 m		
Bottom Log Interval	3220.5 m		
Top Log Interval	3215.5 m		
Casing Fluid Type	Production Fluids		
Salinity			
Density			
Fluid Level	1135 m		
BIT/CASING/TUBING STRING			
Bit Size	6.000 in		
From	2702 m		
To	3364 m		
Casing/Tubing Size	4.500 in		
Weight	11.6 lbm/ft		
Grade	L-80		
From	2571 m		
To	3334 m		
Maximum Recorded Temperatures	210 degF		
Logger On Bottom	4-May-2008	23:00	
Unit Number	889	Prod4 / Ausl	
Recorded By	G Wright & O Darby.		
Witnessed By	B White & J Dean.		

	Run 1	Run 2	Run 3
Oil Density			
Water Salinity			
Gas Gravity			
Bo			
Bw			
1/Bg			
Bubble Point Pressure			
Bubble Point Temperature			
Solution GOR			
Maximum Deviation	70 deg		
CEMENTING DATA			
Primary/Squeeze	Primary		
Casing String No			
Lead Cement Type			
Volume			
Density			
Water Loss			
Additives			
Tail Cement Type			
Volume			
Density			
Water Loss			
Additives			
Expected Cement Top			
Logging Date			
Run Number			
Depth Driller			
Schlumberger Depth			
Bottom Log Interval			
Top Log Interval			
Casing Fluid Type			
Salinity			
Density			
Fluid Level			
BIT/CASING/TUBING STRING			
Bit Size			
From			
To			
Casing/Tubing Size			
Weight			
Grade			
From			
To			
Maximum Recorded Temperatures			
Logger On Bottom			
Unit Number			
Recorded By			
Witnessed By			

DEPTH SUMMARY LISTING

Date Created: 30-APR-2008 11:17:19

Depth System Equipment

Depth Measuring Device		Tension Device		Logging Cable	
Type:	IDW-EB	Type:	PSDS/OSDS	Type:	2-32ZT
Serial Number:	6373	Serial Number:	325357	Serial Number:	27244
Calibration Date:	04-Jan-2007	Calibration Date:	30-Apr-2008	Length:	6409.94 M
Calibrator Serial Number:	9	Calibrator Serial Number:	1174	Conveyance Method:	Wireline
Calibration Cable Type:	2-23ZT	Calibration Gain:	0.95	Rig Type:	Rigless
Wheel Correction 1:	-2	Calibration Offset:	-494.00		
Wheel Correction 2:	-4				

Depth Control Parameters

Log Sequence:	Subsequent Log In the Well
Reference Log Name:	ExxonMobil correlation log.
Reference Log Run Number:	
Reference Log Date:	.

Depth Control Remarks

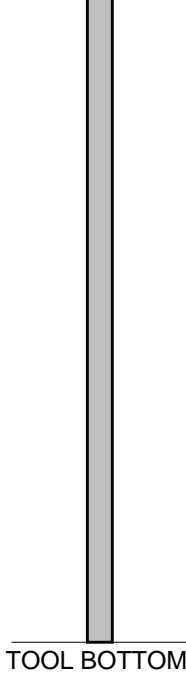
1. IDW-EB 6373 used as primary depth control.
2. Z-Chart as secondary control.
3.
4.
5.
6.

DISCLAIMER

THE USE OF AND RELIANCE UPON THIS RECORDED-DATA BY THE HEREIN NAMED COMPANY (AND ANY OF ITS AFFILIATES, PARTNERS, REPRESENTATIVES, AGENTS, CONSULTANTS AND EMPLOYEES) IS SUBJECT TO THE TERMS AND CONDITIONS AGREED UPON BETWEEN SCHLUMBERGER AND THE COMPANY, INCLUDING: (a) RESTRICTIONS ON USE OF THE RECORDED-DATA; (b) DISCLAIMERS AND WAIVERS OF WARRANTIES AND REPRESENTATIONS REGARDING COMPANY'S USE OF AND RELIANCE UPON THE RECORDED-DATA; AND (c) CUSTOMER'S FULL AND SOLE RESPONSIBILITY FOR ANY INFERENCE DRAWN OR DECISION MADE IN CONNECTION WITH THE USE OF THIS RECORDED-DATA.

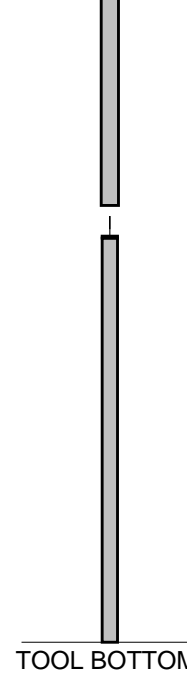
OTHER SERVICES1	OTHER SERVICES2
OS1: RST-C Survey	OS1:
OS2:	OS2:
OS3:	OS3:
OS4:	OS4:
OS5:	OS5:
REMARKS: RUN NUMBER 1	REMARKS: RUN NUMBER 2
Log correlated to ExxonMobil composite supplied with logging program	
Maximum well deviation = 70 Deg @ 3102.0m MDKB	
Objective:	
RIH with perforating gun correlate guns on depth to Solar composite log.	
Locate the guns over perforation interval = 3215.5-3220.5m attempt to obtain a	
300 psi underbalance whilst maintaining the guns at the desired depth, record	
static bottom hole pres / temp, perforate, flow the the well for 15 mins after	
perforation and record flowing pres / temp.	

SBHT = 209 DegF, SBHP = 2577.3 Psi / FBHT = 213.8 DegF, FBHP = 2623 Psi					
MPBT					
RIH with a dummy plug toolstring incorporating GR-CCL ensure access to					
plug setting depth. RIH with MPBT toolstring with a 4 1/2" plug, set with the					
top sealing element at approximately 3246.5m MDKB					
RIH with dump bailer toolstring and lightly tag the MPBT plug pull up one					
meter and release water / cement leaving approximately 1m of cement on the plug					
Crew: J Annear, J Light, P Lawrence, A Mc Lellan					
RUN 1			RUN 2		
SERVICE ORDER #:		AusI008509111	SERVICE ORDER #:		
PROGRAM VERSION:		15C0-309	PROGRAM VERSION:		
FLUID LEVEL:		1135 m	FLUID LEVEL:		
LOGGED INTERVAL	START	STOP	LOGGED INTERVAL	START	STOP
EQUIPMENT DESCRIPTION					
RUN 1			RUN 2		
SURFACE EQUIPMENT			SURFACE EQUIPMENT		
MWPM-AA			MPBM		
DOWNHOLE EQUIPMENT			DOWNHOLE EQUIPMENT		
AH-SWBS-B 786 AH-SWBS-B 786			AH-SWBS-B 787 AH-SWBS-B 787		
AH-SWBS-B 785 AH-SWBS-B 785			AH-SWBS-B 786 AH-SWBS-B 786		
MH-SWHS-A 759 MH-SWHS-A 759			AH-SWBS-B 785 AH-SWBS-B 785		
MWGT-AA 69 MWPG-AA MWGH-AA			MH-SWHS-A 759 MH-SWHS-A 759		
MWPG GR _____ 2.41			CCL-L 9851 CCL-L		
MWPT-CA 74 MWPH-AA MWPS-AA			MPSU-BA 20 MPSU-BA		
CCL SMWP Pres SMWP Temp Tension _____ TOOL ZERO			CCL Tachomete Cable Cur Head Volt Tension _____ TOOL ZERO		
MWP_GUN GUN-2 1/8" PowerJet					



MAXIMUM STRING DIAMETER 2.69 IN
MEASUREMENTS RELATIVE TO TOOL ZERO
ALL LENGTHS IN METERS

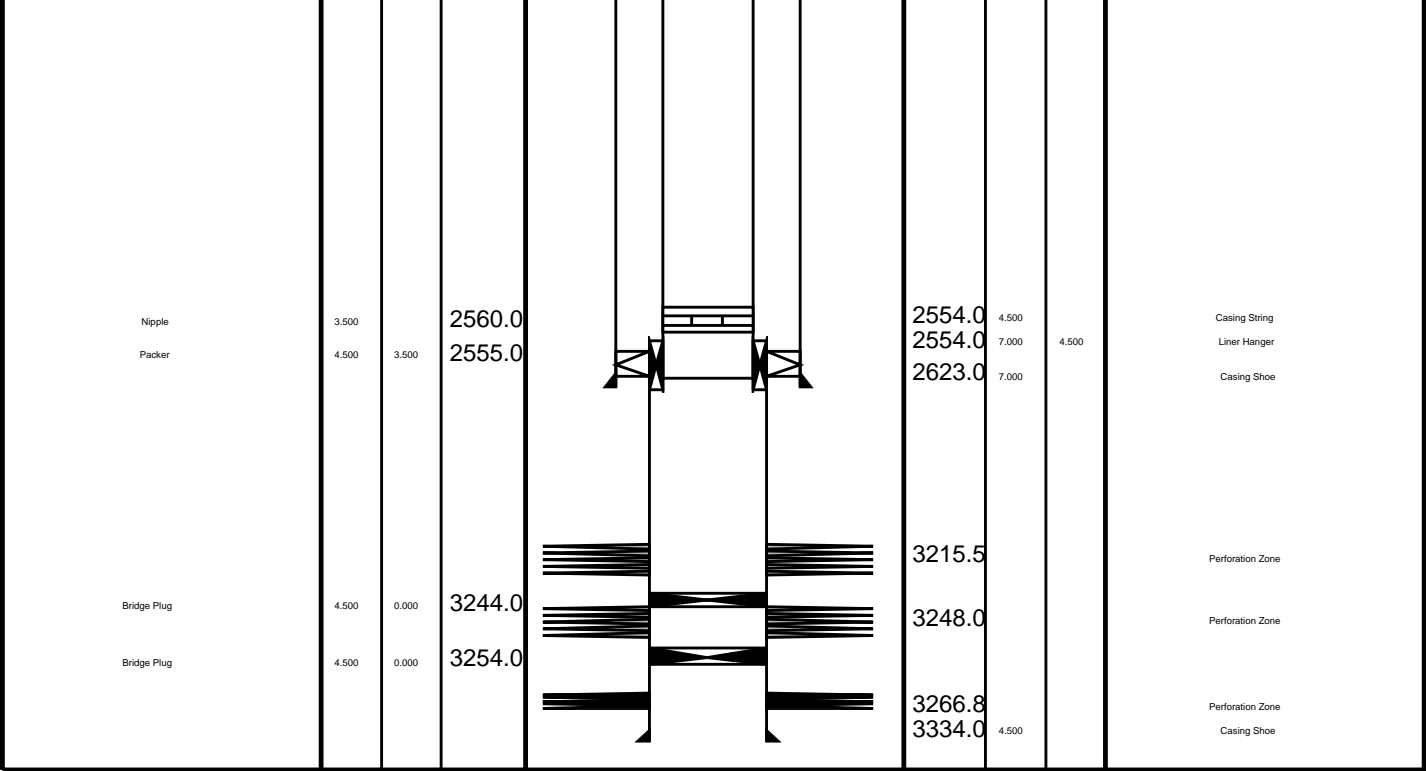
MPEX-AA
MPEX-AA



MAXIMUM STRING DIAMETER 1.71 IN
MEASUREMENTS RELATIVE TO TOOL ZERO
ALL LENGTHS IN METERS

3.10

Production String		(in)	(m)	Well Schematic		(m)	(in)	Casing String	
		OD	ID	MD		MD	OD	ID	
Tubing	3.500			11.0		12.8	12.038		Casing String
Tubing Hanger	7.000	3.500	9.0	12.8		10.750	7.000	Liner Hanger	
Shutin Valve	3.500		446.0						
Gas Lift Mandrel	3.500		571.0						
Gas Lift Mandrel	3.500		1128.0						
Gas Lift Mandrel	3.500		1397.0			1346.0	10.750		Casing Shoe
Nipple	3.500		1413.0						



Job Events Summary

MAXIS Field Log

Schlumberger Job Event Summary

Time	Elapsed Time	Depth (M)	File
Log Pass (down)	3-May-2008 22:48 000:07	418.5 - 763.1	PERFO_047LDP
Log Pass (down)	3-May-2008 22:55 000:40	770.7 - 3239.4	PERFO_048LDP
Log Pass (up)	3-May-2008 23:35 000:05	3239.4 - 3189.6	PERFO_049LUP
Log Pass (up)	3-May-2008 23:42 000:04	3220.7 - 3177.7	PERFO_050LUP
Log Pass (up)	3-May-2008 23:48 000:09	3223.9 - 3144.5	PERFO_051LUP
Log Pass (up)	4-May-2008 0:04 000:03	3227.7 - 3192.5	PERFO_052LUP
Log Pass (up)	4-May-2008 0:08 000:04	3228.1 - 3182.1	PERFO_053LUP
Log Pass (up)	4-May-2008 0:13 000:08	3226.2 - 3145.7	PERFO_054LUP
Log Pass (up)	4-May-2008 0:25 000:57	3225.9 - 3142.8	PERFO_055LUP
Station Log	4-May-2008 0:27 000:01	3212.0 - 0.1	PERFO_056LTP
Station Log	4-May-2008 0:29 000:46	3212.0 - 6.9	PERFO_057LTP
Simulated Log	4-May-2008 3:51 000:03		PSP_063LUP
Log Pass (down)	4-May-2008 4:13 000:50	-14.0 - 3234.7	PSP_064LDP
Log Pass (up)	4-May-2008 5:03 000:04	3234.7 - 3178.6	PSP_065LUP
Log Pass (down)	4-May-2008 5:08 000:02	3186.8 - 3251.1	PSP_066LDP
Log Pass (up)	4-May-2008 5:10 000:09	3250.8 - 3148.0	PSP_067LUP
Log Pass (up)	4-May-2008 5:20 000:58	3131.4 - -12.2	PSP_068LUP

Log Pass (up) 4-May-2008 8:28 000:38 3107.4 - 3122.1 MPBT_070LUP
Log Pass (up) 4-May-2008 7:36 000:11 12192.0 - 12191.7 MPBT_070LUP
Log Pass (down) 4-May-2008 8:09 001:22 20.6 - 3207.1 MPBT_072LDP
Log Pass (up) 4-May-2008 9:31 000:02 3207.1 - 3185.6 MPBT_073LUP
Log Pass (up) 4-May-2008 9:34 000:04 3206.5 - 3162.3 MPBT_074LUP
Log Pass (down) 4-May-2008 9:41 000:03 3211.1 - 3245.7 MPBT_075LDP
Simulated Log 4-May-2008 9:47 000:14 MPBT_076LUP
Simulated Log 4-May-2008 10:04 000:00 MPBT_077LUP
Simulated Log 4-May-2008 10:04 000:00 MPBT_078LUP
Log Pass (up) 4-May-2008 10:05 000:05 3237.3 - 3171.9 MPBT_079LUP
Log Pass (up) 4-May-2008 10:18 000:01 2823.4 - 2822.8 MPBT_080LUP
Simulated Log 4-May-2008 12:39 000:00 PERFO_081LUP
Simulated Log 4-May-2008 13:24 000:02 PERFO_082LDP
Log Pass (down) 4-May-2008 13:26 000:35 102.9 - 3236.1 PERFO_083LDP
Log Pass (up) 4-May-2008 14:01 000:06 3236.4 - 3138.1 PERFO_084LUP
Log Pass (down) 4-May-2008 14:07 000:03 3141.1 - 3249.5 PERFO_085LDP
Log Pass (up) 4-May-2008 14:10 000:05 3242.6 - 3162.1 PERFO_086LUP
Log Pass (up) 4-May-2008 15:37 000:25 40.4 - -14.9 PERFO_088LUP
Log Pass (down) 4-May-2008 16:28 000:32 5.9 - 3244.0 PERFO_089LDP
Log Pass (up) 4-May-2008 17:00 000:06 3244.0 - 3157.4 PERFO_090LUP

Schlumberger

2 1/8" Dump Bailer Cement Run

MAXIS Field Log

Input DLIS Files

DEFAULT PERFO_090LUP FN:89 PRODUCER 04-May-2008 17:00 3244.0 M 3157.4 M

Output DLIS Files

DEFAULT PERFO_091PUP FN:90 PRODUCER 04-May-2008 17:08 3247.0 M 3160.9 M

OP System Version: 15C0-309

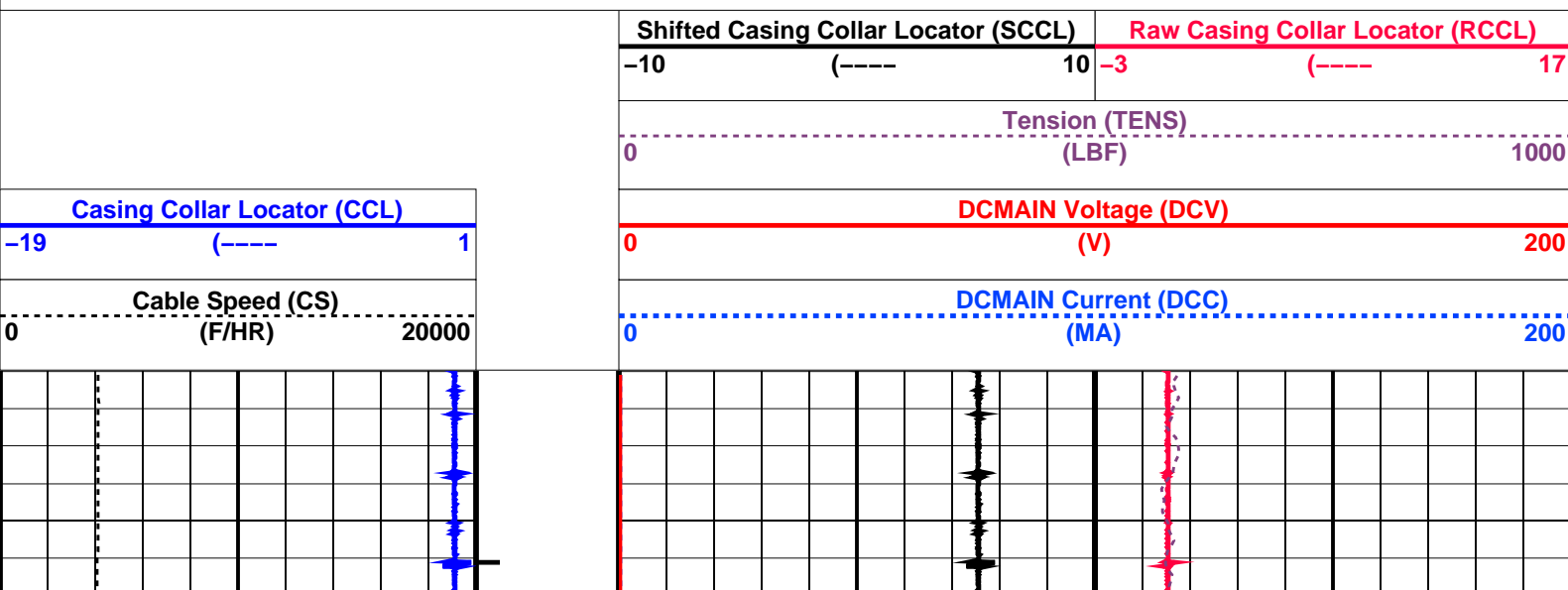
MCM

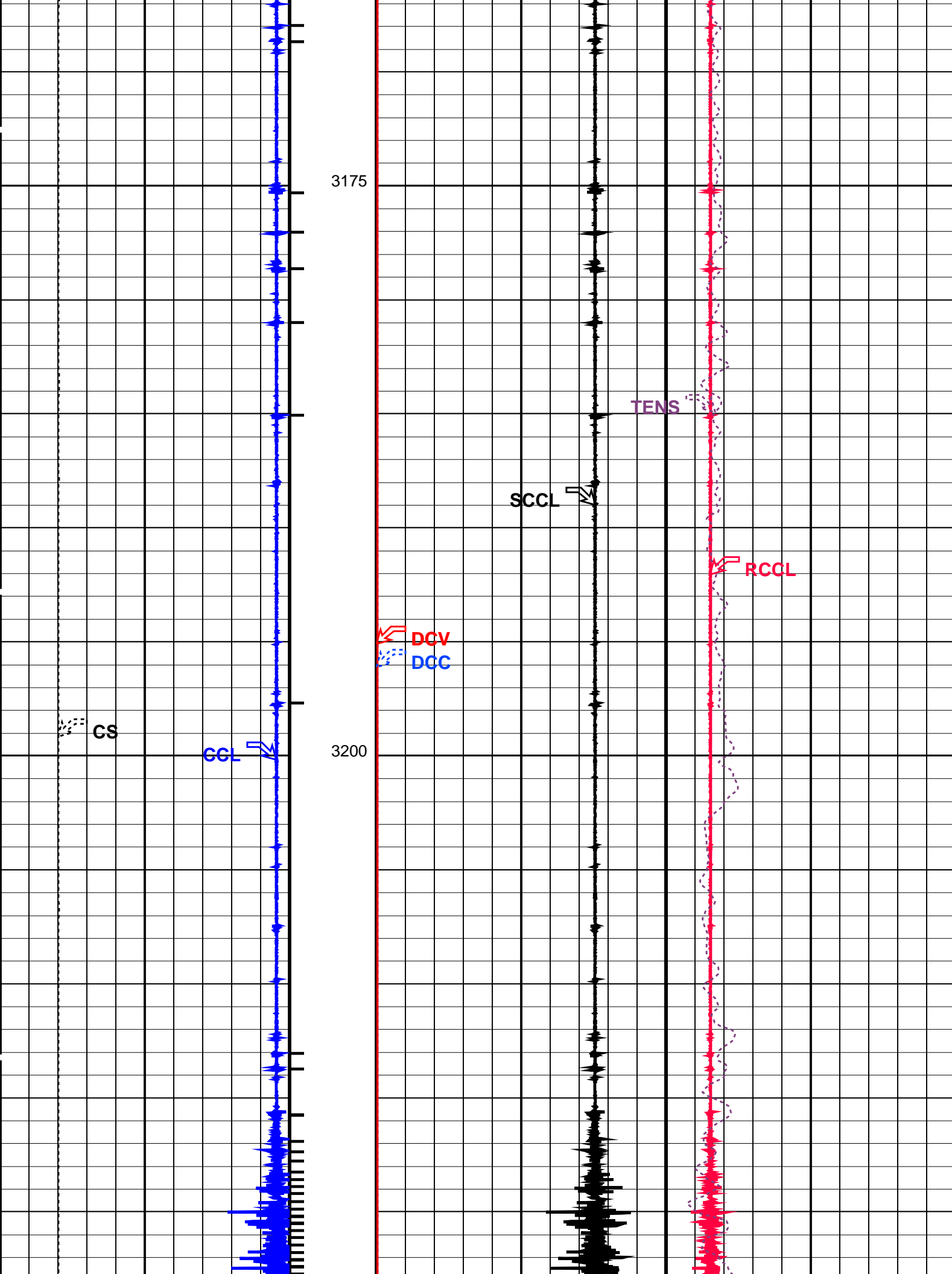
SHM_GUN SRPC-3546-Q1_2008_OP15 CCL-L SRPC-3546-Q1_2008_OP15

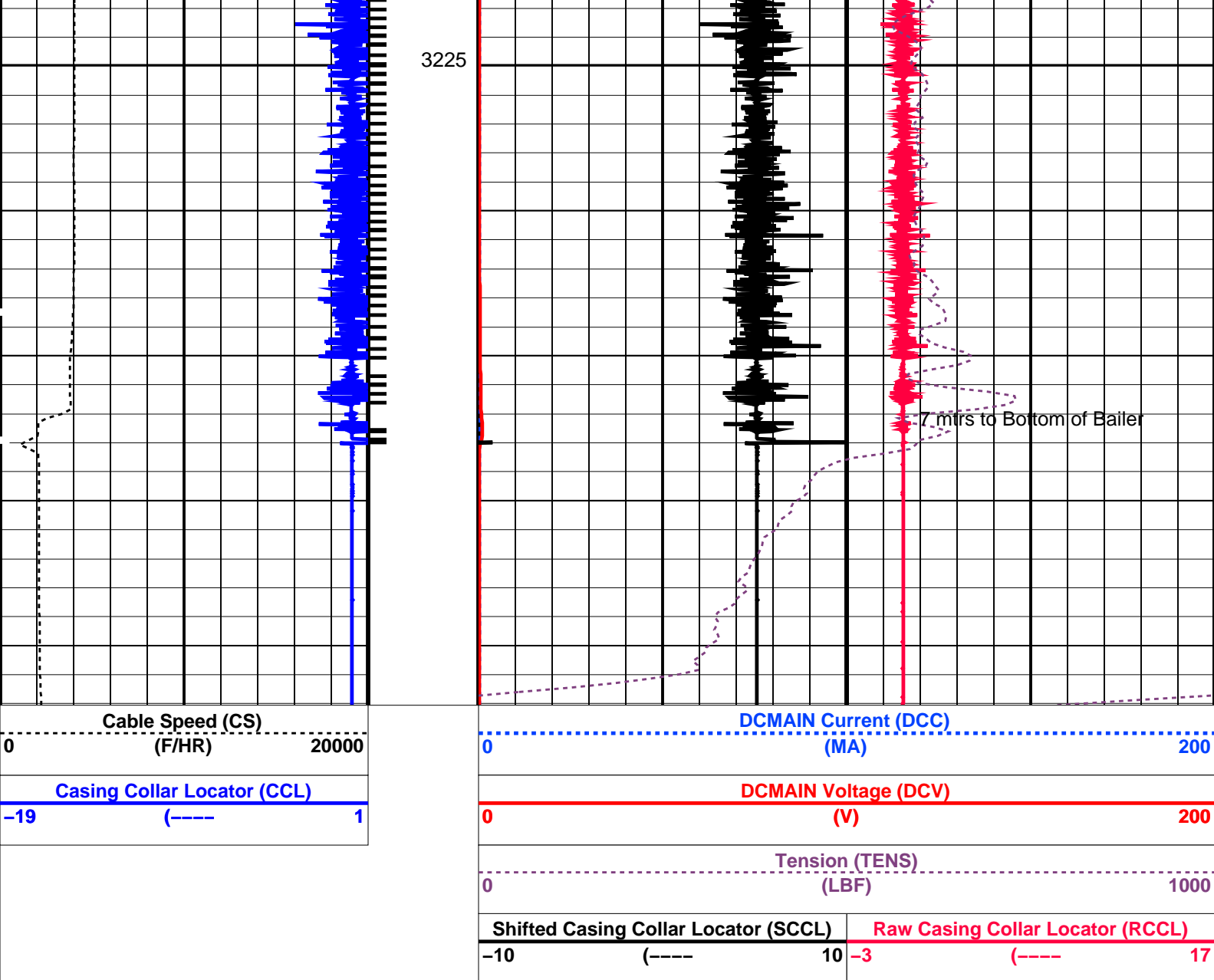
PIP SUMMARY

└─ Casing Collars

☒ Time Mark Every 60 S







PIP SUMMARY

— Casing Collars

Time Mark Every 60 S

Parameters

DLIS Name	Description	Value
CCLD	CCL-L: Casing Collar Locator	
CCLT	CCL reset delay	12 IN
	CCL Detection Level	0.3 V
DO	System and Miscellaneous	
PP	Depth Offset for Playback	3.0 M
	Playback Processing	NORMAL

Format: PERFO Vertical Scale: 1:200

Graphics File Created: 04-May-2008 17:08

OP System Version: 15C0-309

MCM

SHM_GUN SRPC-3546-Q1_2008_OP15 CCL-L SRPC-3546-Q1_2008_OP15

Input DLIS Files

DEFAULT PERFO_090LUP FN:89 PRODUCER 04-May-2008 17:00 3244.0 M 3157.4 M

Output DLIS Files

DEFAULT PERFO_090LUP FN:89 PRODUCER 04-May-2008 17:00 3244.0 M 3157.4 M



2 1/8" Dump Bailer
Water Run

MAXIS Field Log

Input DLIS Files

DEFAULT PERFO_086LUP FN:85 PRODUCER 04-May-2008 14:10 3242.6 M 3162.1 M

Output DLIS Files

DEFAULT PERFO_087PUP FN:86 PRODUCER 04-May-2008 14:16 3244.4 M 3164.4 M

OP System Version: 15C0-309
MCM

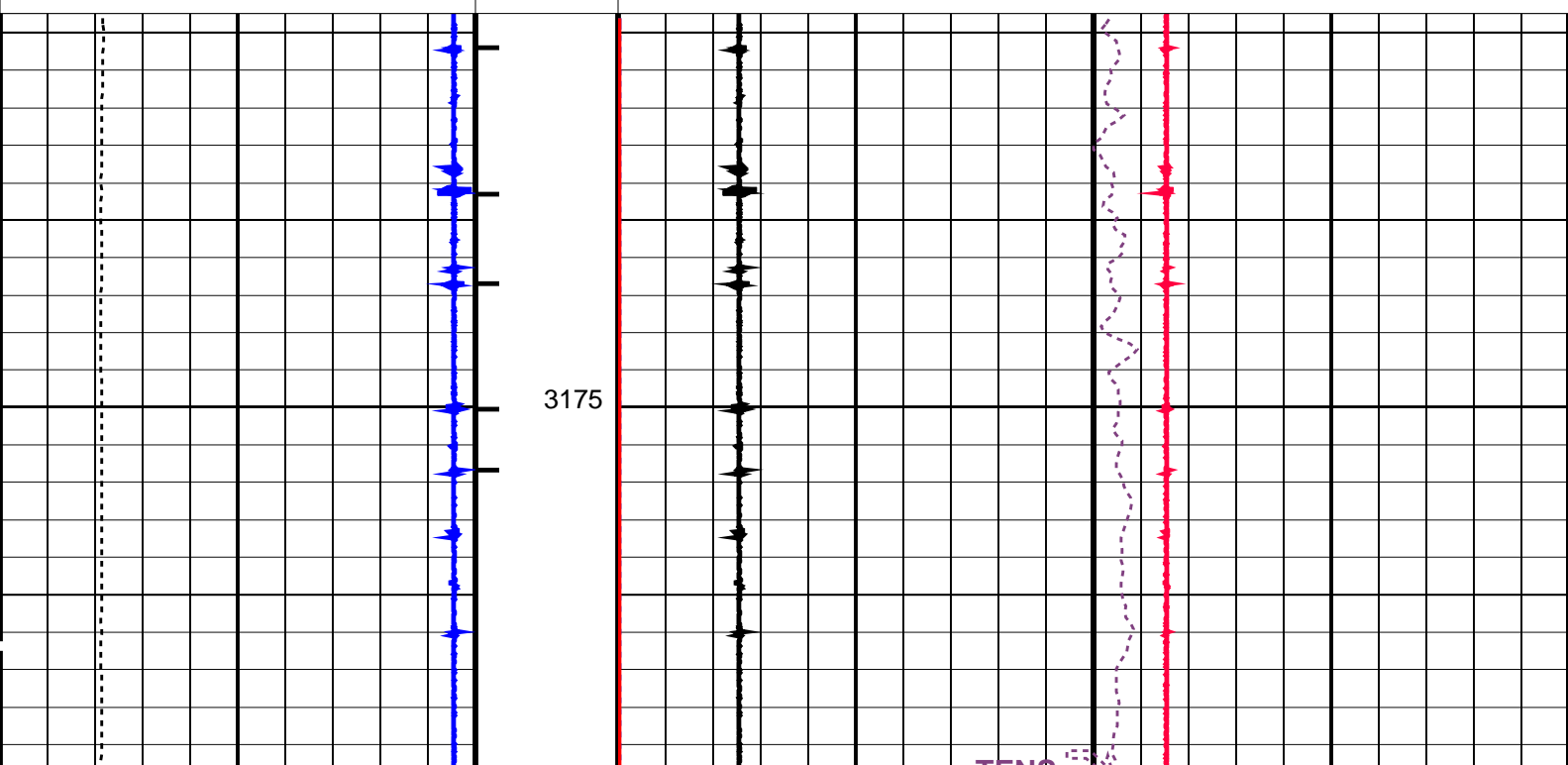
SHM_GUN SRPC-3546-Q1_2008_OP15 CCL-L SRPC-3546-Q1_2008_OP15

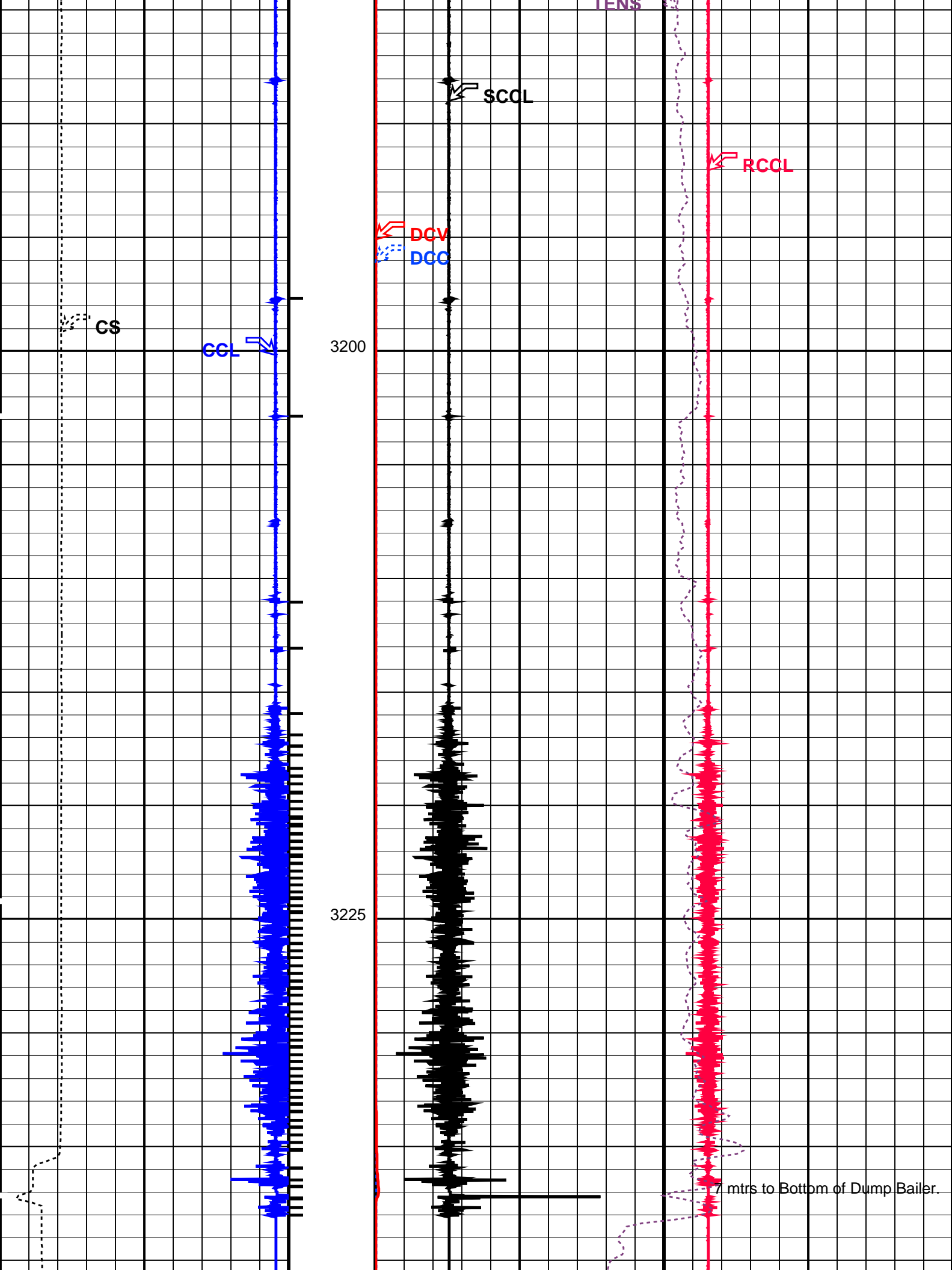
PIP SUMMARY

└─ Casing Collars

Time Mark Every 60 S

	Casing Collar Locator (CCL)		Shifted Casing Collar Locator (SCCL)		Raw Casing Collar Locator (RCCL)		
	-19	(----	1	-10	(----	10	
	Cable Speed (CS)		Tension (TENS)		DCMAIN Voltage (DCV)		
	0	(F/HR)	20000	0	(LBF)	1000	
					DCMAIN Current (DCC)		
					0	(MA)	200

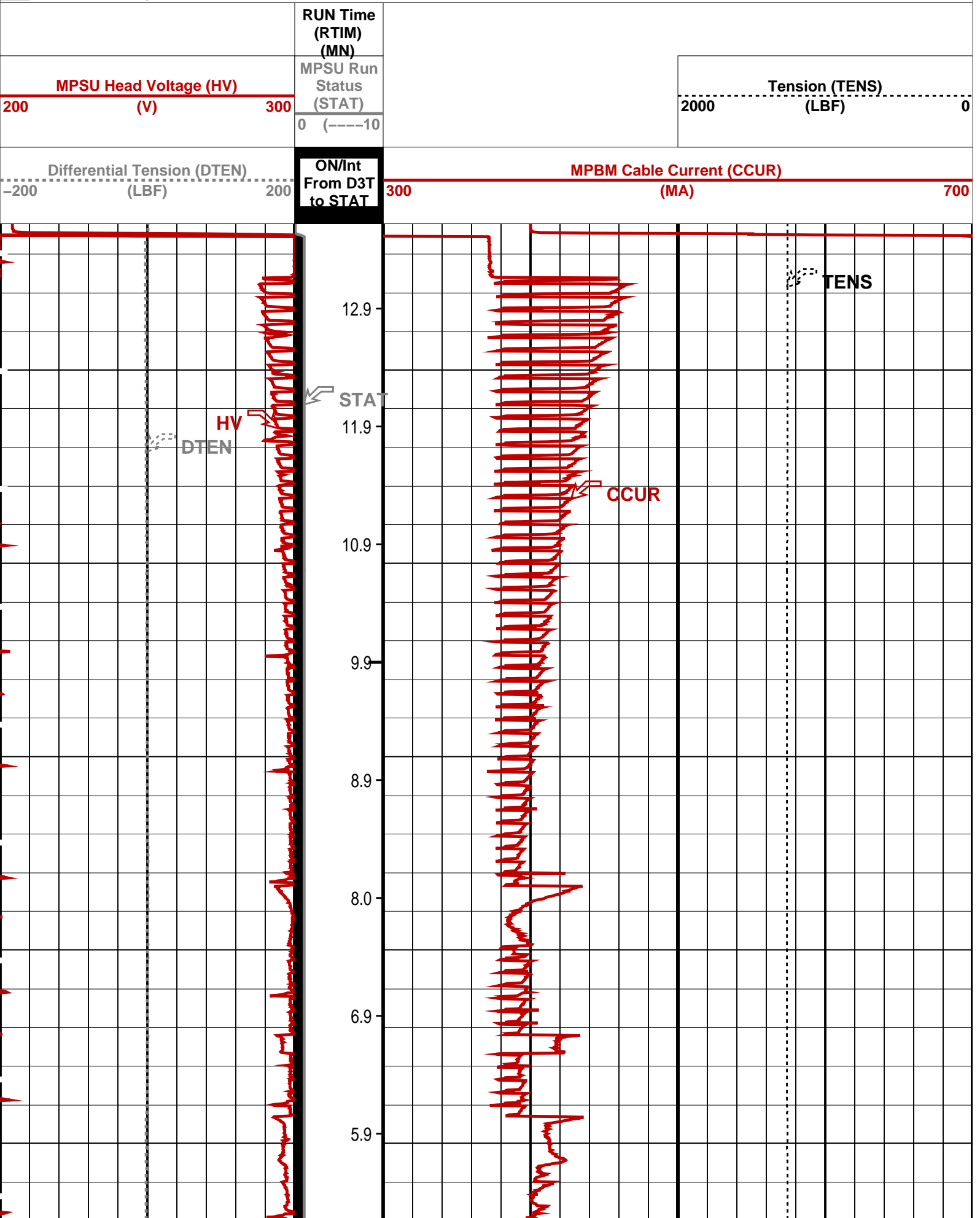


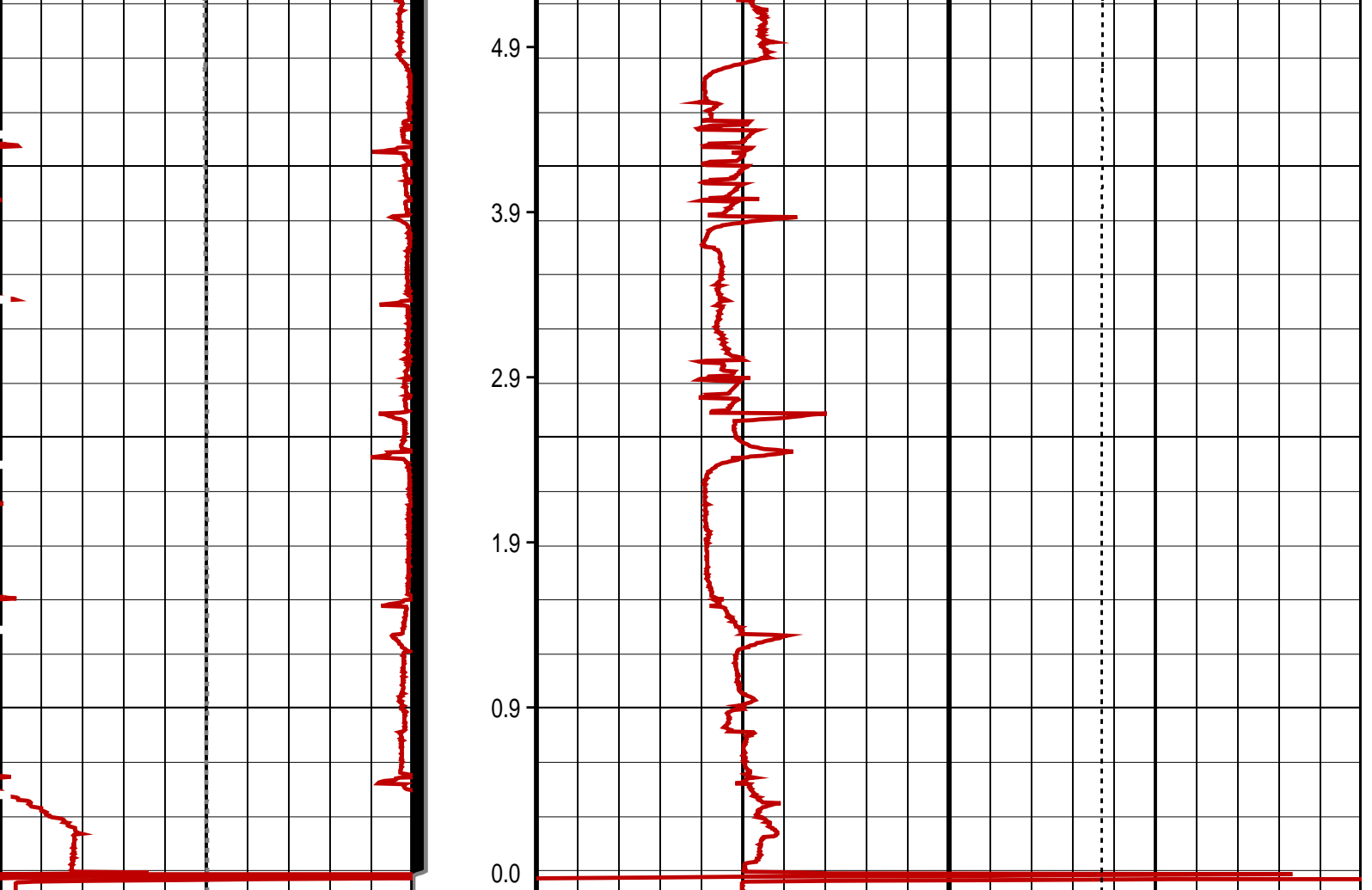


PIP SUMMARY

- MPSU Run Time Every 1 MN
- MPSU Run Time Every 10 MN

Time Mark Every 60 S





Differential Tension (DTEN) (LBF)	ON/Int From D3T to STAT	MPBM Cable Current (CCUR) (MA)
-200200		300700
MPSU Head Voltage (HV) (V)	MPSU Run Status (STAT)	Tension (TENS) (LBF)
200300	0 (----10)	20000
	RUN Time (RTIM) (MN)	

PIP SUMMARY

- └ MPSU Run Time Every 1 MN
- └ MPSU Run Time Every 10 MN

Time Mark Every 60 S

Parameters

DLIS Name	Description	Value
MPSU-BA: MECHANICAL PLUGBACK SETTING UNIT IPUMP	Intensifier Pump	TRUE
Format: MPBT Vertical Scale: 1:600 Graphics File Created: 04-May-2008 09:47		
OP System Version: 15C0-309 MCM		
MPEX-AA CCL-L	SRPC-3546-Q1_2008_OP15 SRPC-3546-Q1_2008_OP15	MPSU-BA SRPC-3546-Q1_2008_OP15
Output DLIS Files		
DEFAULT	MPBT_076LUP	FN:75 PRODUCER 04-May-2008 09:47



4 1/2" MPBT Plug
Correlation Pass

MAXIS Field Log

Output DLIS Files

DEFAULT MPBT_074LUP FN:73 PRODUCER 04-May-2008 09:34

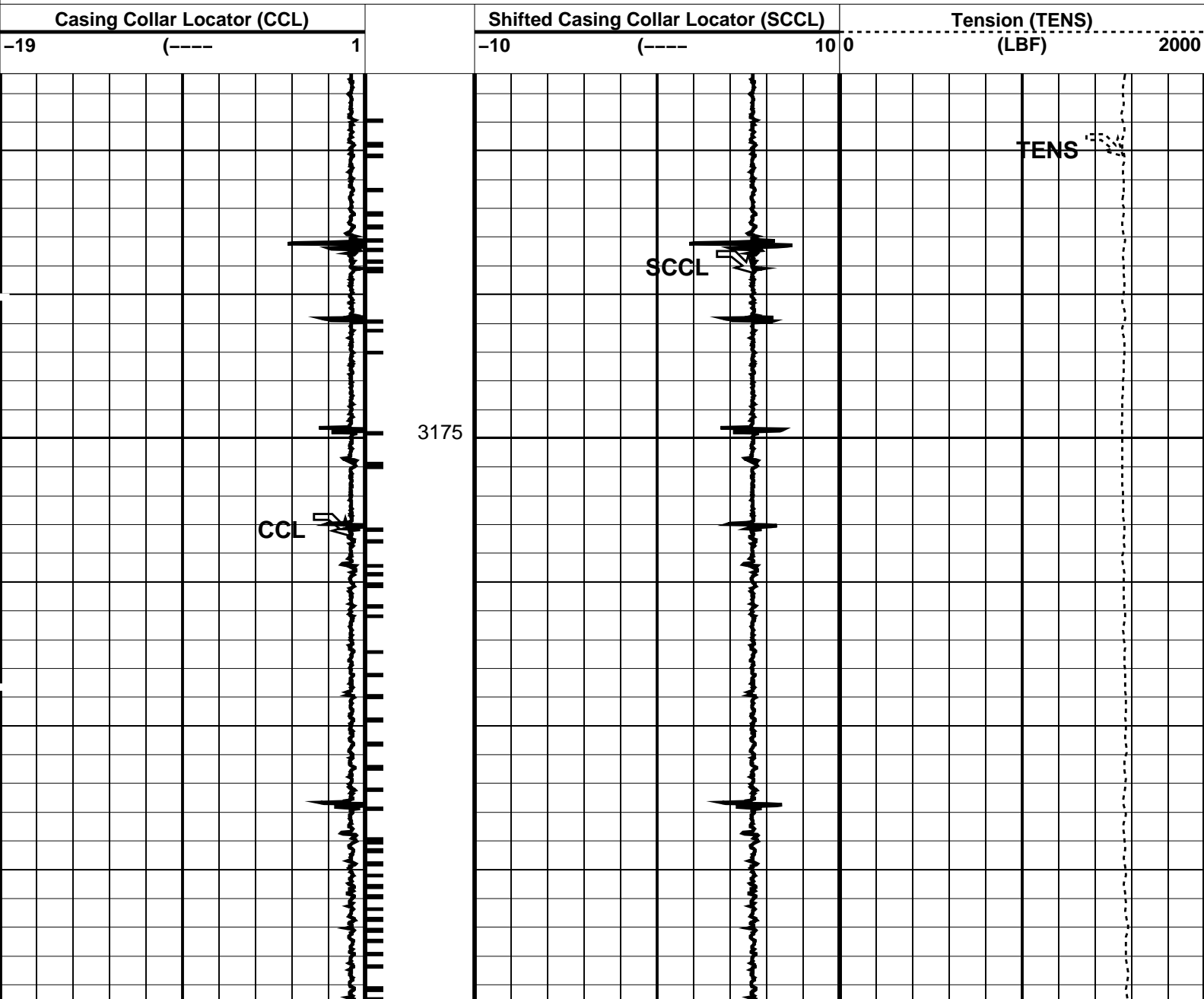
OP System Version: 15C0-309
MCM

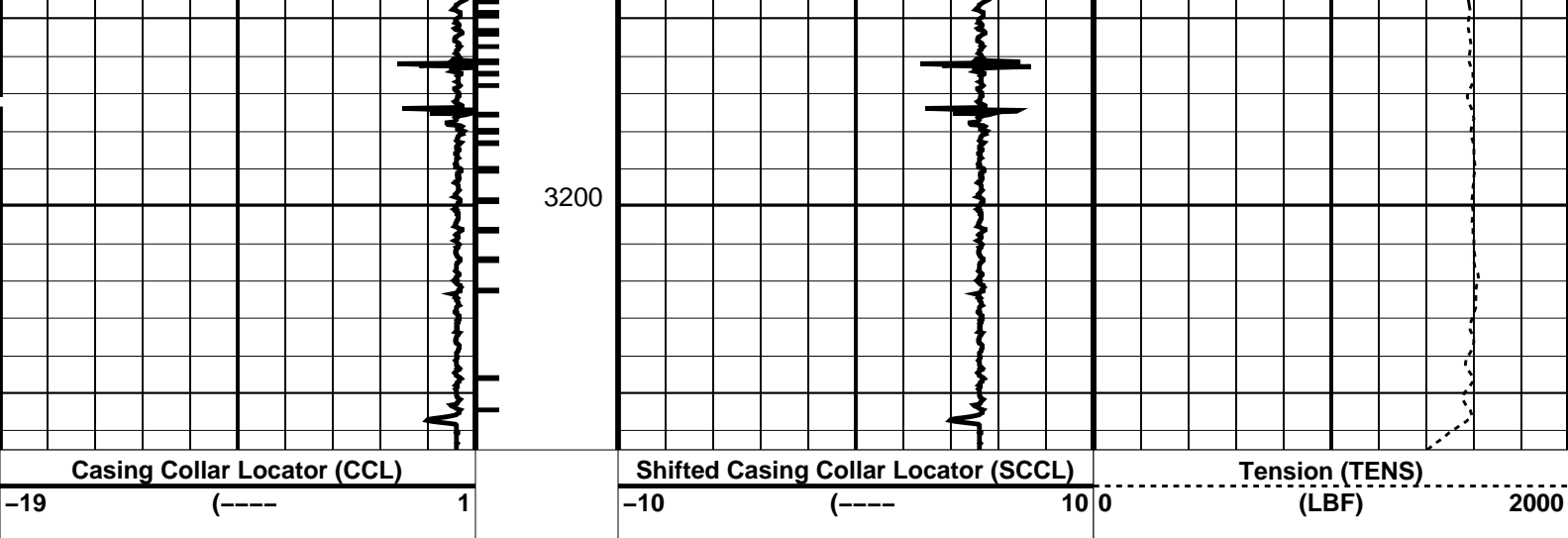
MPEX-AA SRPC-3546-Q1_2008_OP15 MPSU-BA SRPC-3546-Q1_2008_OP15
CCL-L SRPC-3546-Q1_2008_OP15

PIP SUMMARY

└─ Casing Collars

Time Mark Every 60 S





PIP SUMMARY

Time Mark Every 60 S


Casing Collars

Parameters		
DLIS Name	Description	Value
CCL-L: Casing Collar Locator		
CCLD	CCL reset delay	12 IN
CCLT	CCL Detection Level	0.3 V

Format: PERFO Vertical Scale: 1:200 Graphics File Created: 04-May-2008 09:34

OP System Version: 15C0-309			
MCM			
MPEX-AA	SRPC-3546-Q1_2008_OP15	MPSU-BA	SRPC-3546-Q1_2008_OP15
CCL-L	SRPC-3546-Q1_2008_OP15		

Output DLIS Files			
DEFAULT	MPBT_074LUP	FN:73 PRODUCER	04-May-2008 09:34



4 1/2" MPBT Plug
Dummy Run

MAXIS Field Log

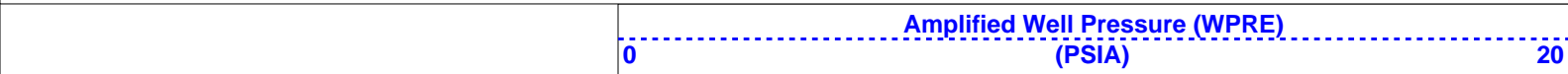
Company: Esso Australia Pty Ltd. Well: A-22ST1

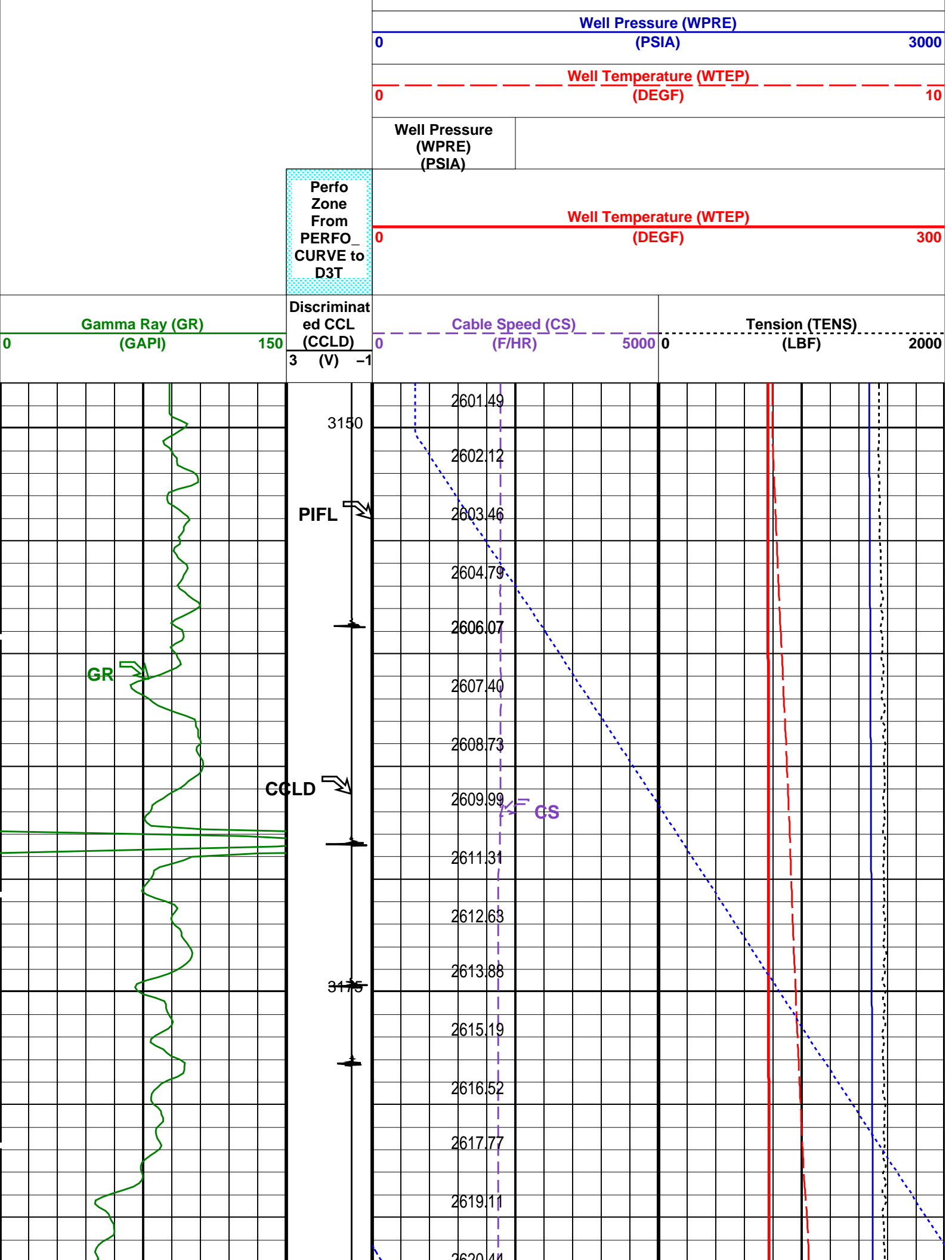
Output DLIS Files					
DEFAULT	PSP_067LUP	FN:66	PRODUCER	04-May-2008 05:10	3250.8 M 3148.0 M

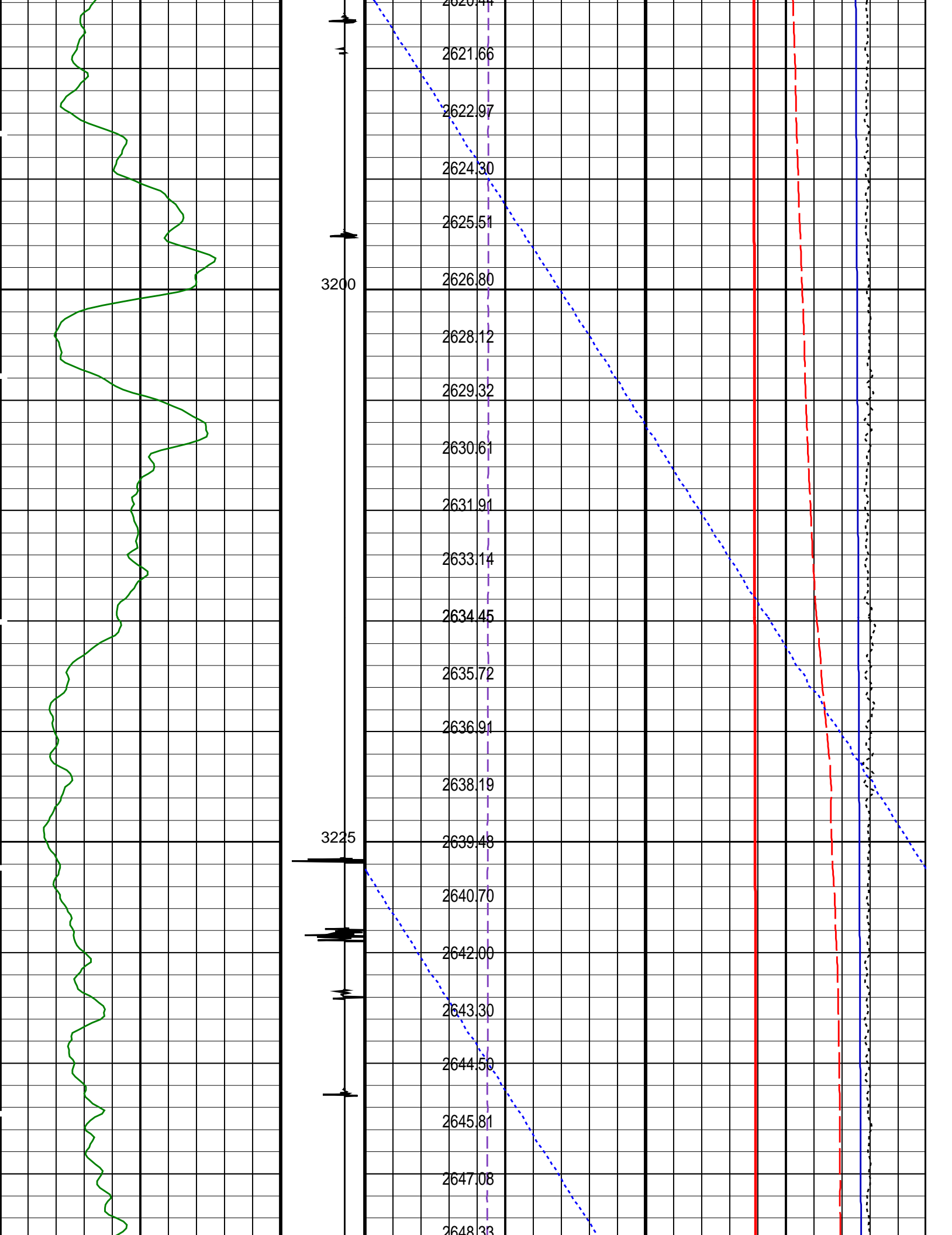
OP System Version: 15C0-309	
MCM	
PSPT-A/B	SRPC-3546-Q1_2008_OP15

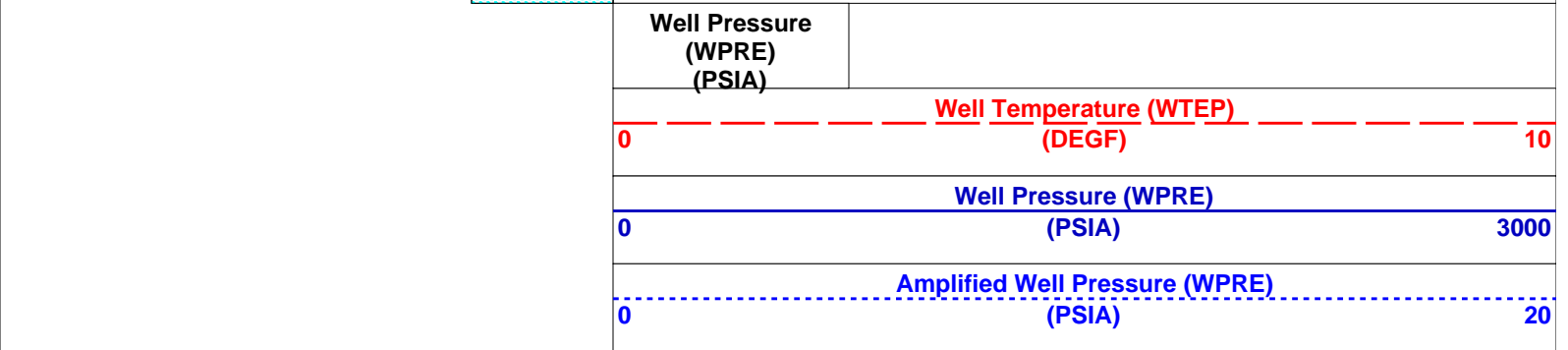
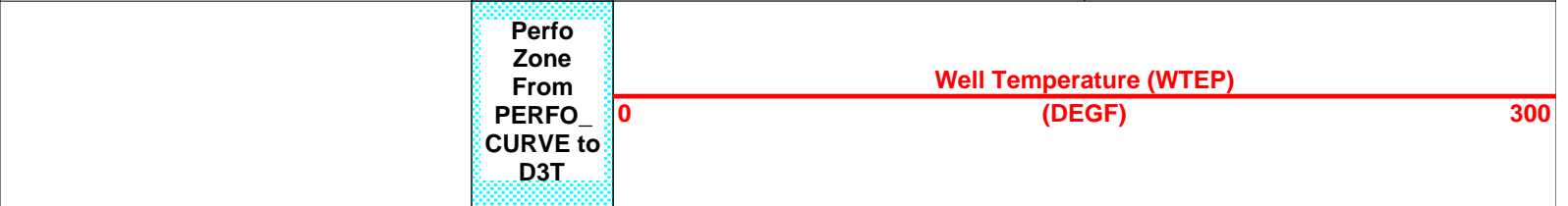
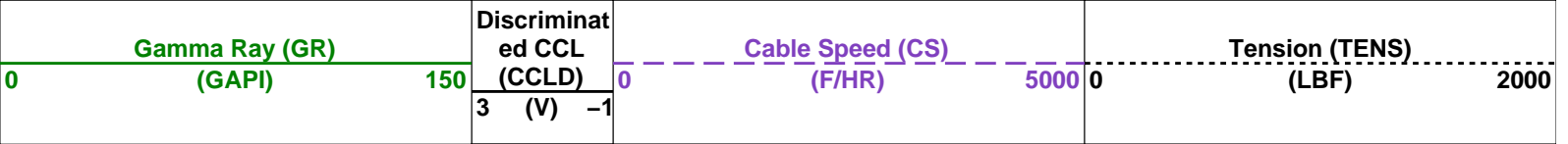
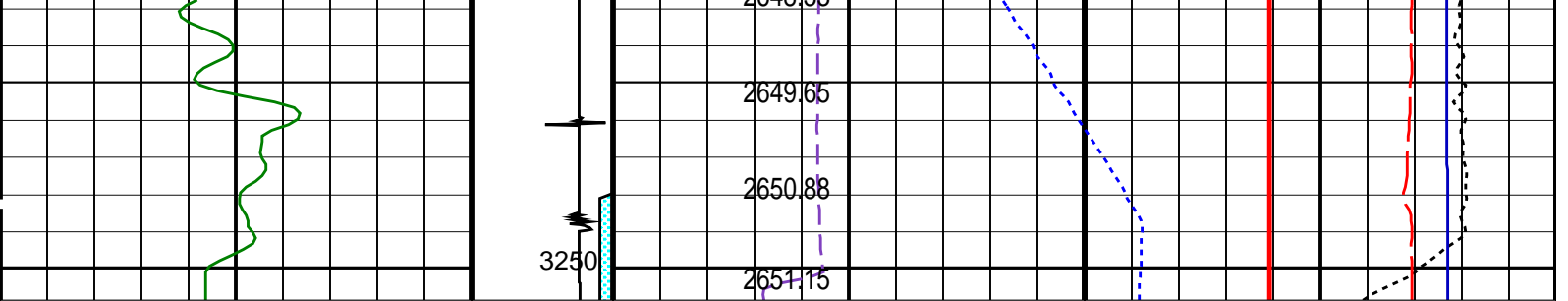
PIP SUMMARY

Time Mark Every 60 S










PIP SUMMARY

Time Mark Every 60 S
Format: PSP_1 Vertical Scale: 1:200 Graphics File Created: 04-May-2008 05:10

OP System Version: 15C0-309
MCM
PSPT-A/B SRPC-3546-Q1_2008_OP15

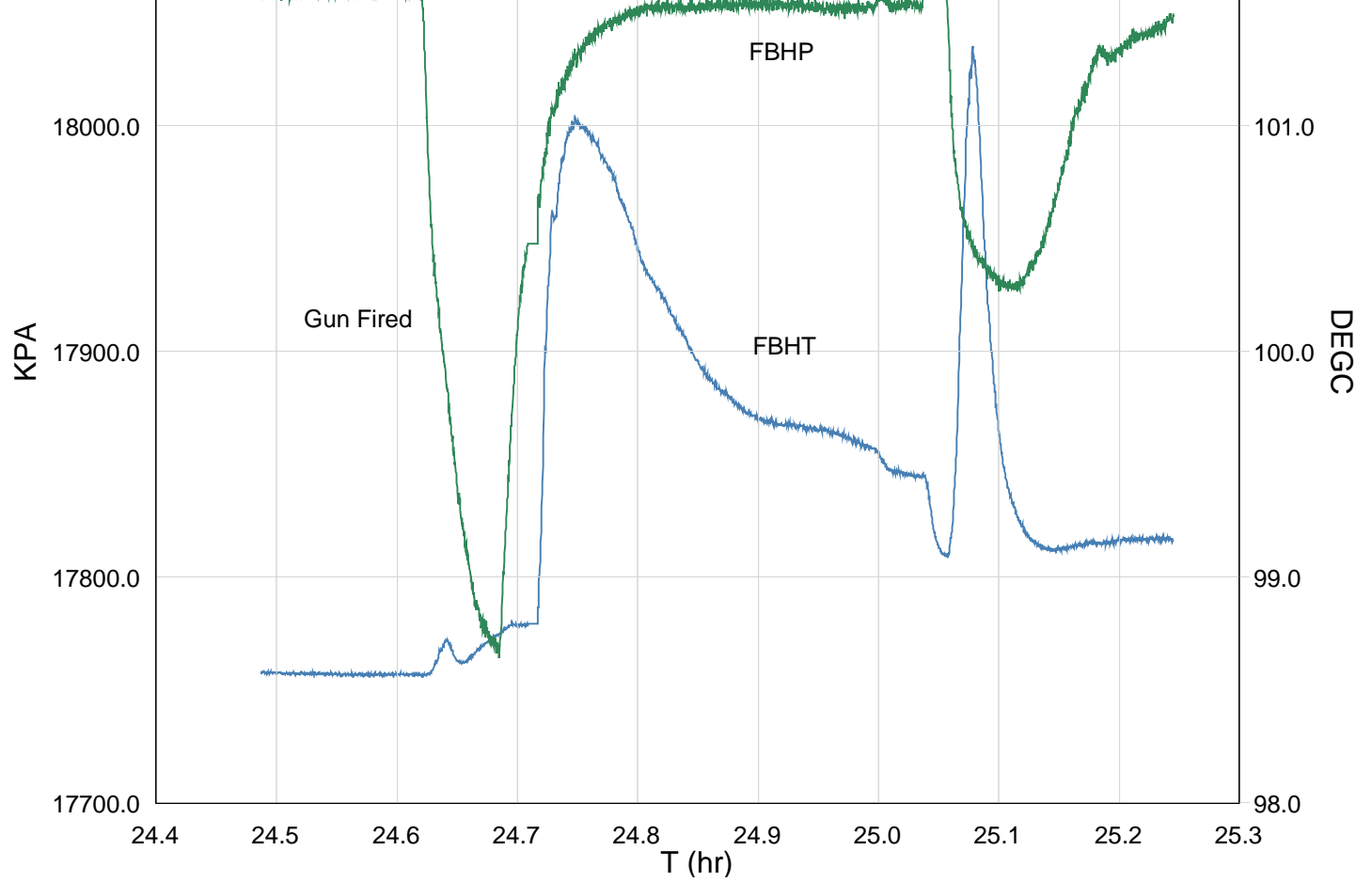
Output DLIS Files
DEFAULT PSP_067LUP FN:66 PRODUCER 04-May-2008 05:10



GUN # 1
3215.5m to 3220.5m MDKB

MAXIS Field Log





TIME	DEGF	PSIA
2940.0	210.51	2616.994
2880.0	210.50	2616.362
2820.0	210.49	2615.061
2760.0	210.47	2615.377
2700.0	210.46	2611.616
2640.0	210.42	2606.398
2580.0	210.48	2602.257
2520.0	210.72	2600.355
2460.0	211.57	2600.737
2400.0	214.20	2602.791
2340.0	211.12	2607.820
2280.0	210.51	2621.836
2220.0	211.00	2618.649
2160.0	211.05	2618.522
2100.0	211.22	2618.331
2040.0	211.29	2618.523
1980.0	211.36	2618.357
1920.0	211.38	2618.361
1860.0	211.40	2618.605
1800.0	211.43	2618.594
1740.0	211.48	2618.450
1680.0	211.59	2618.418
1620.0	211.74	2618.332
1560.0	211.96	2618.238
1500.0	212.24	2618.502
1440.0	212.53	2617.872
1380.0	212.90	2618.148
1320.0	213.38	2617.489

Schlumberger

MAXIS Field Log

Well: A-22ST1

DEFAULT	PERFO 055LUP	FN:54	PRODUCER	04-May-2008 00:25	3225.9 M	3142.8 M
---------	--------------	-------	----------	-------------------	----------	----------

MWP_GUN	SRPC-3546-Q1_2008_OP15	MWPT-CA	SRPC-3546-Q1_2008_OP15
MWGT-AA	SRPC-3546-Q1_2008_OP15		

Time Mark Every 60 S

Tension (TENS)
(LBF)

0 (LBF) 2000

Temperature (TEMP_MWPT)
(DEGF)

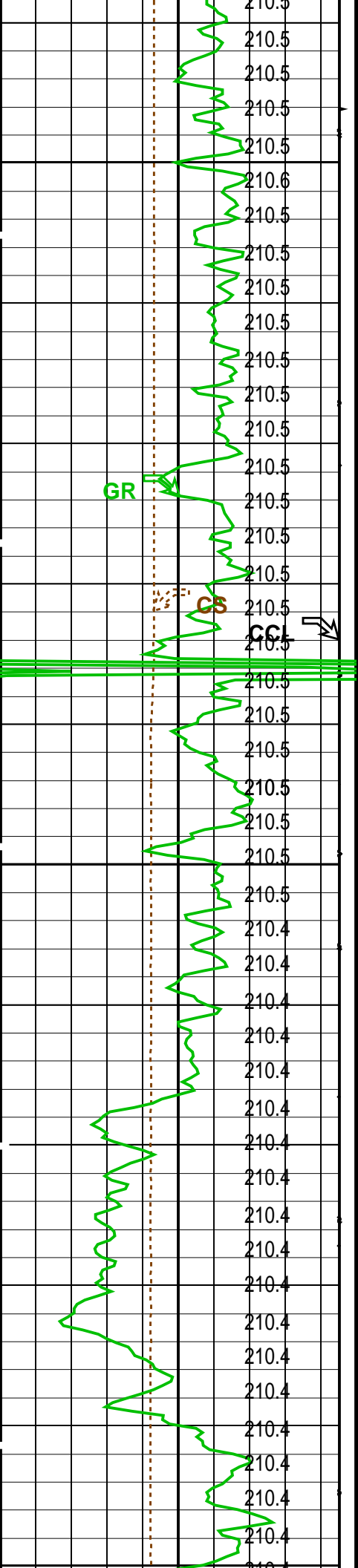
Strain Gauge Pressure (SGP)
(PSIA)

Temperature (TEMP_MWPT)
(DEGF)

Strain Gauge Pressure (SGP)		
2550	(PSIA)	2650

2589.1

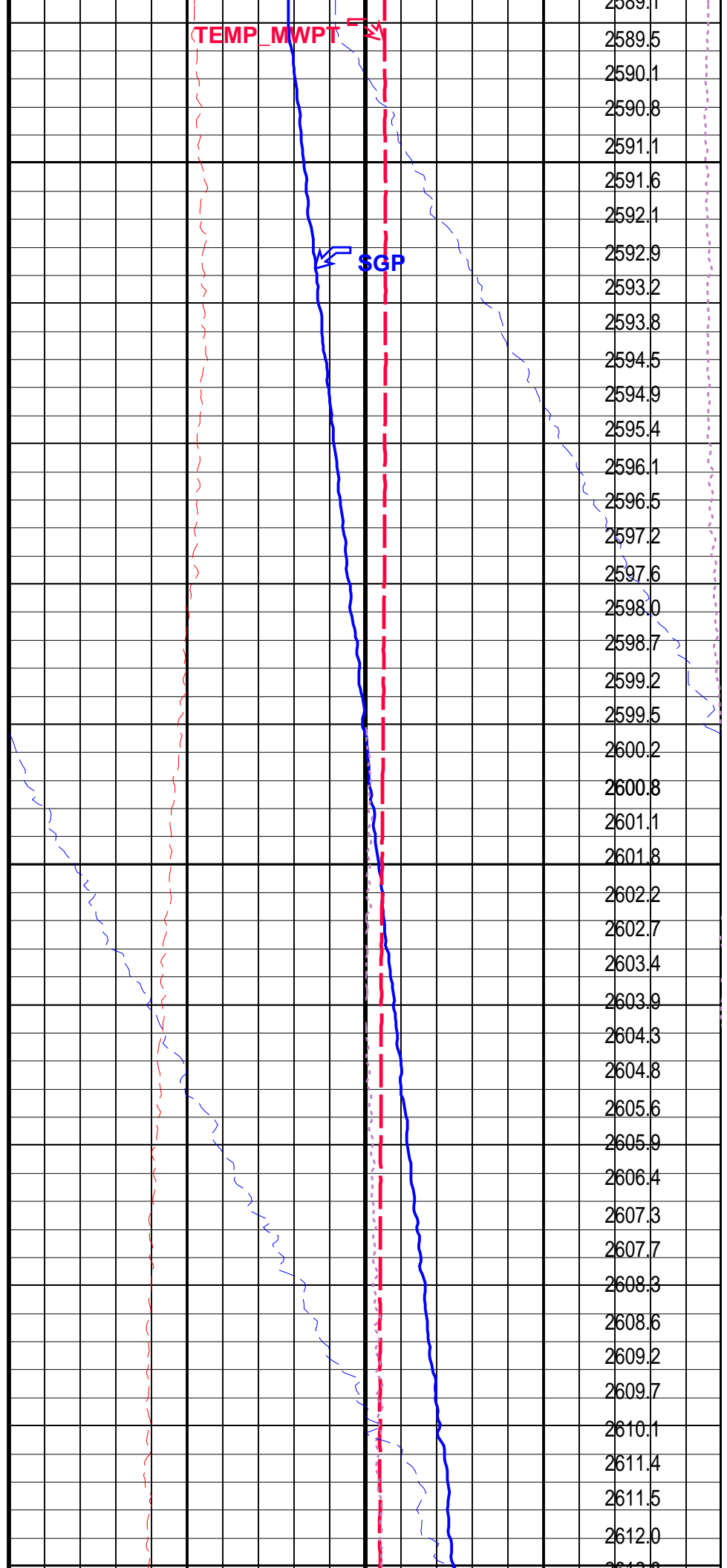
2590 1

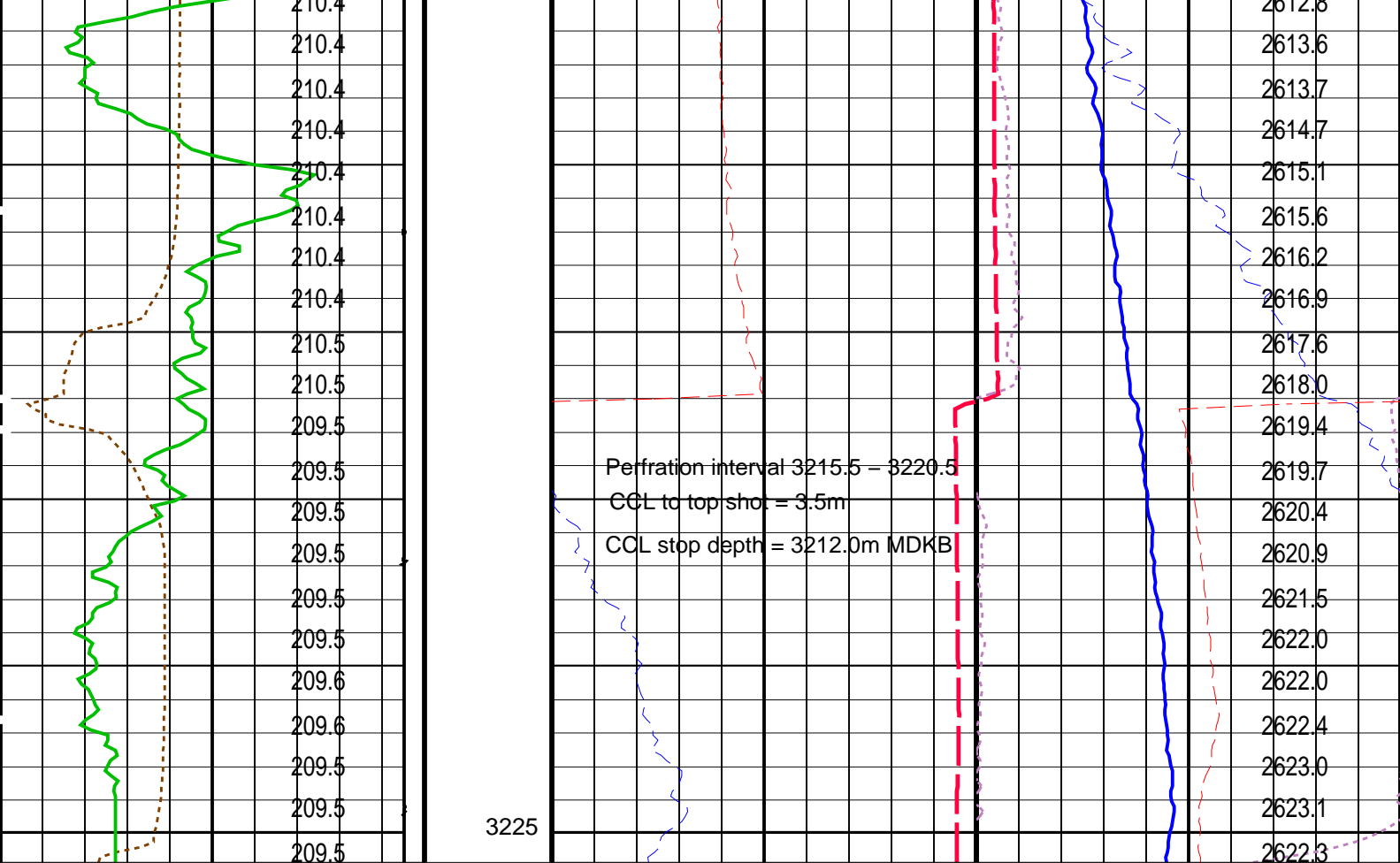


3150

3175

3200





Cable Speed (CS)		
(F/HR)		
0		5000
Casing Collar Locator (CCL)		
(----)		
-19		1
Gamma Ray (GR)		
(GAPI)		
0		150
CCL		
From CCL to T1		
Temperature		
(TEMP_MWPT)		
(DEGF)		

Strain Gauge Pressure (SGP)		
(PSIA)		
2550		2650
Temperature (TEMP_MWPT)		
(DEGF)		
200		220
Strain Gauge Pressure (SGP)		
(PSIA)		
0		20
Temperature (TEMP_MWPT)		
(DEGF)		
0		2
Tension (TENS)		
(LBF)		
0		2000
Pressure (SGP)		
(PSIA)		

PIP SUMMARY

Time Mark Every 60 S

Parameters

DLIS Name	Description	Value
MWPT-CA: MEASUREMENT WHILE PERFORATING TOOL		
DEVI_FL_CORR	Deviation Angle for Flow Line Correction	0 DEG
FLD	Flow Line Density	1 G/C3
MWPT_NULL_SOURCE	MWPT NULL Temperature Source	TEMS
MWPT_NULL_TEMP	MWPT NULL Temperature	0.0 DEGC

Format: MWP Vertical Scale: 1:200

Graphics File Created: 04-May-2008 00:25

OP System Version: 15C0-309

MCM

MWP_GUN	SRPC-3546-Q1_2008_OP15	MWPT-CA	SRPC-3546-Q1_2008_OP15
MWGT-AA	SRPC-3546-Q1_2008_OP15		

Output DLIS Files



GUN # 1

Correlation Pass

MAXIS Field Log

Company: Esso Australia Pty Ltd.

Well: A-22ST1

Output DLIS Files

DEFAULT

PERFO_054LUP

FN:53

PRODUCER

04-May-2008 00:13

3226.2 M

3145.7 M

OP System Version: 15C0-309

MCM

MWP_GUN

SRPC-3546-Q1_2008_OP15

MWPT-CA

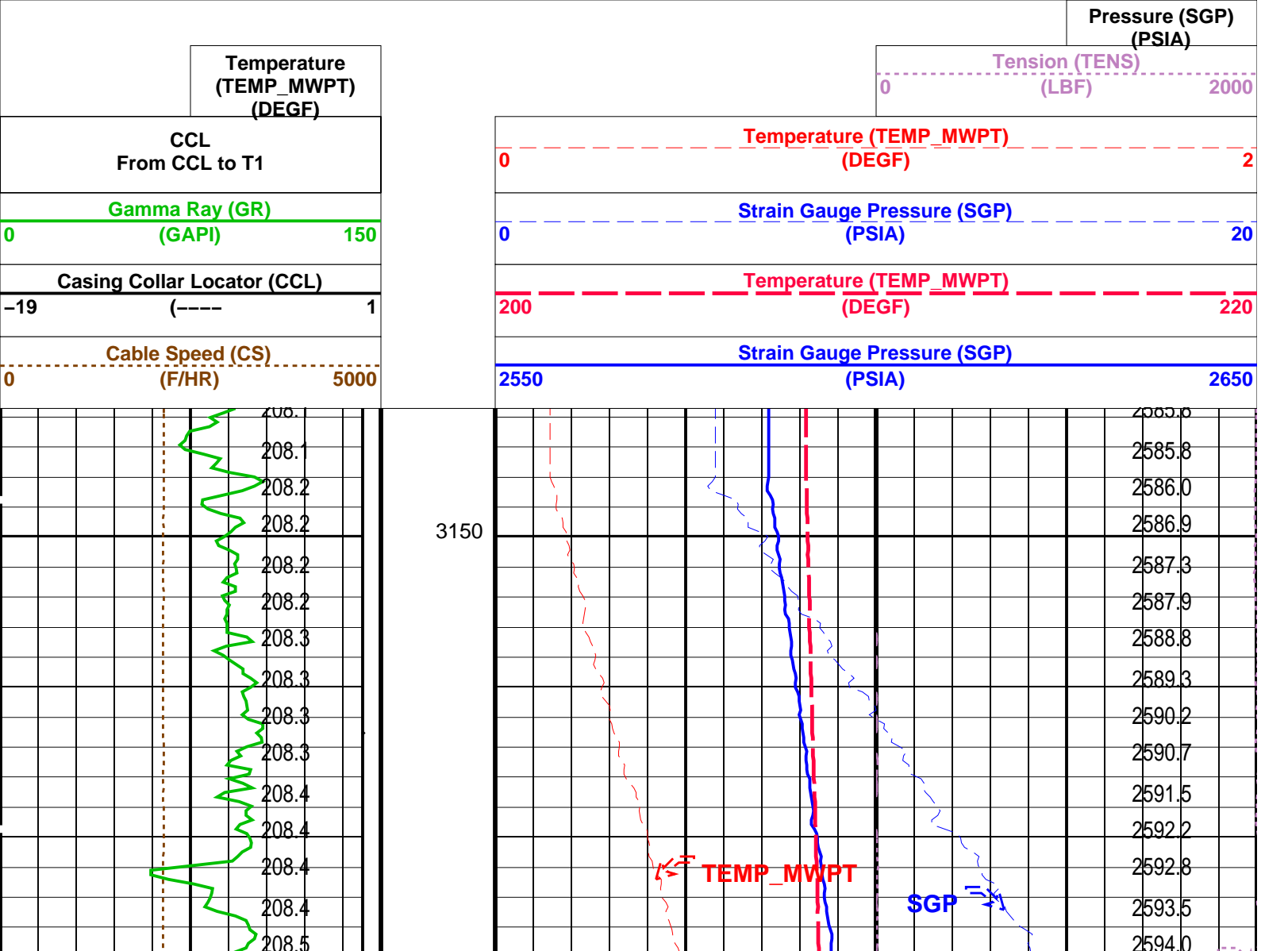
SRPC-3546-Q1_2008_OP15

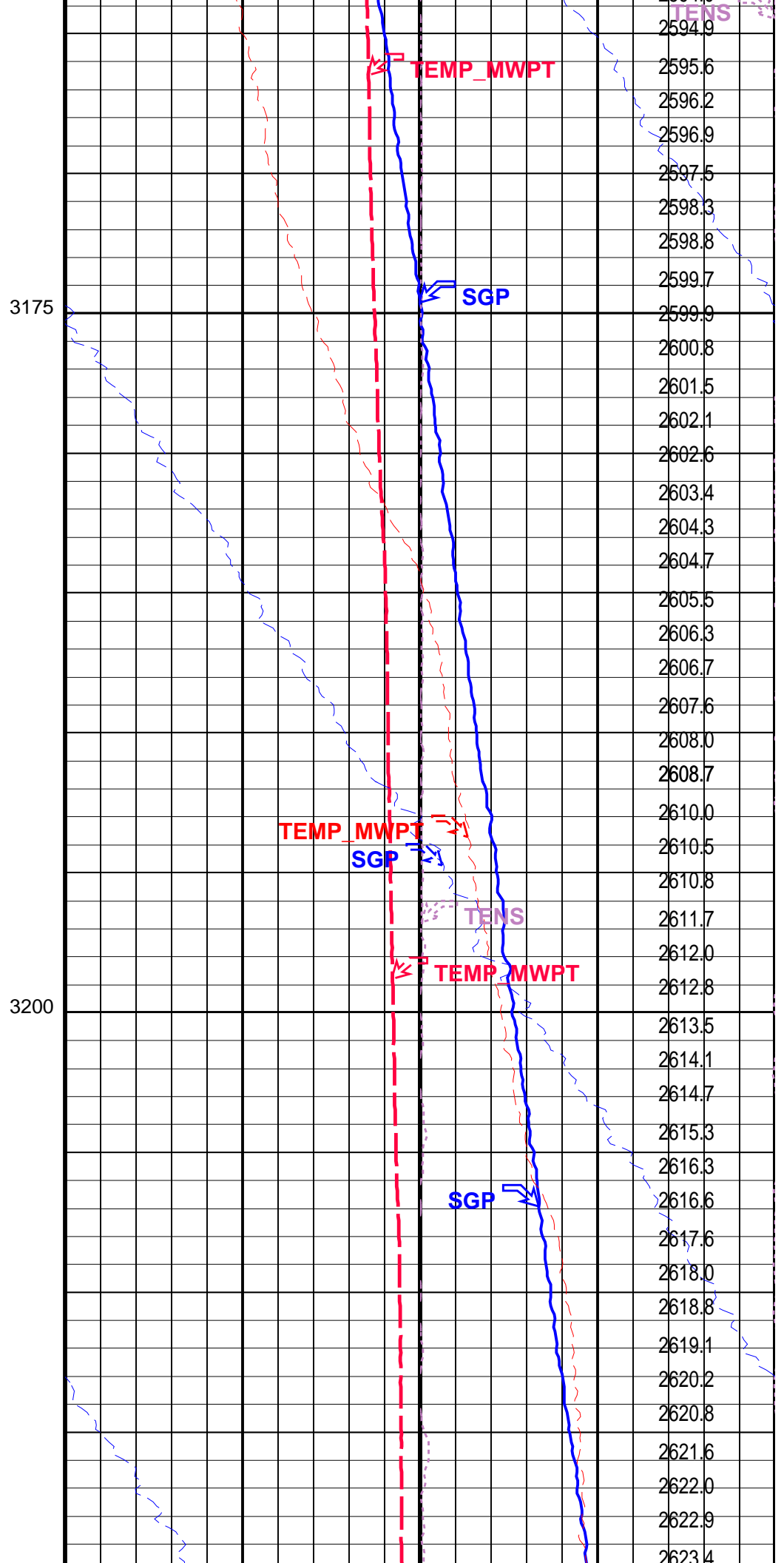
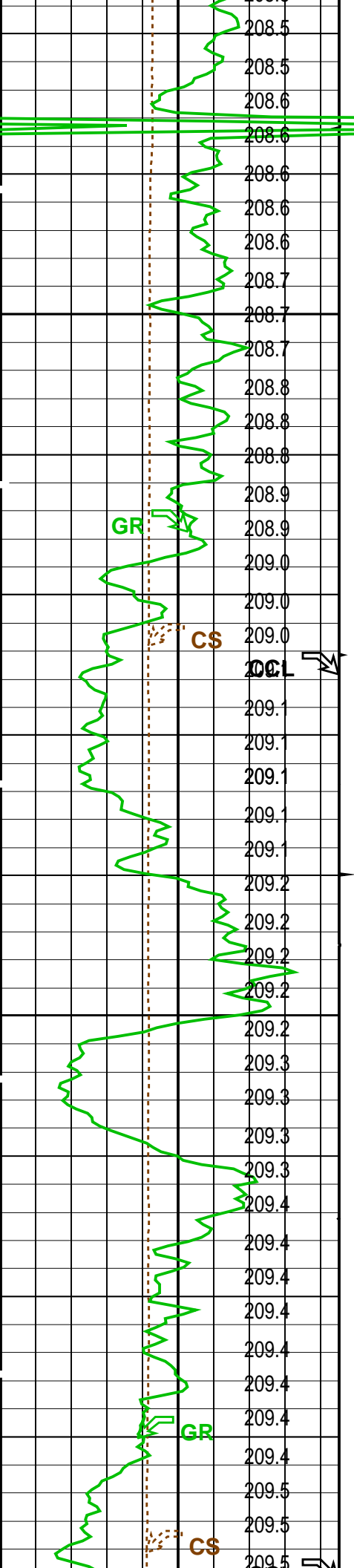
MWGT-AA

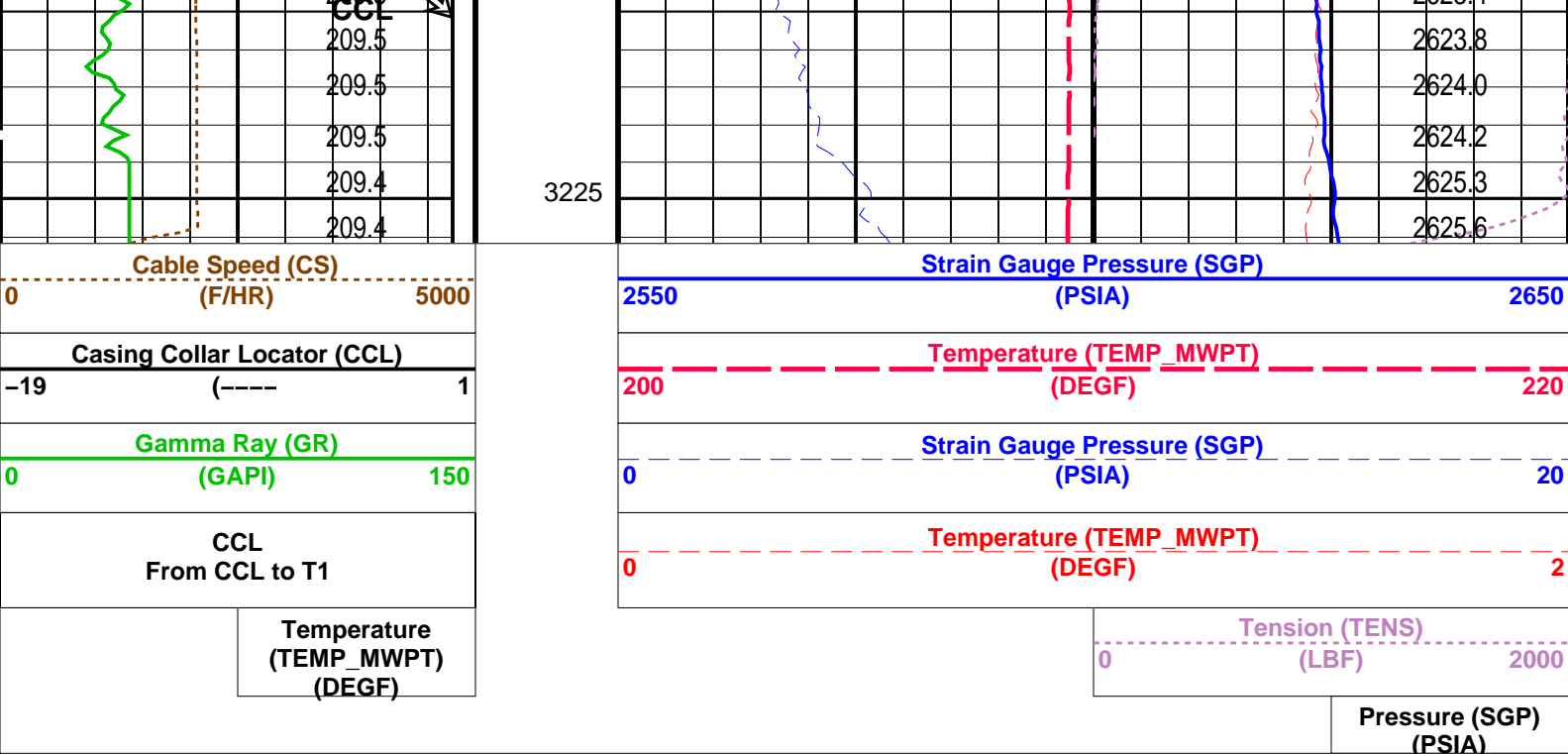
SRPC-3546-Q1_2008_OP15

PIP SUMMARY

Time Mark Every 60 S







Time Mark Every 60 S			
PIP SUMMARY			
Parameters			
DLIS Name	Description	Value	
MWPT-CA: MEASUREMENT WHILE PERFORATING TOOL			
DEVI_FL_CORR	Deviation Angle for Flow Line Correction	0	DEG
FLD	Flow Line Density	1	G/C3
MWPT_NULL_SOURCE	MWPT NULL Temperature Source	TEMS	
MWPT_NULL_TEMP	MWPT NULL Temperature	0.0	DEGC
Format: MWP Vertical Scale: 1:200		Graphics File Created: 04-May-2008 00:13	
OP System Version: 15C0-309			
MCM			
MWP_GUN	SRPC-3546-Q1_2008_OP15	MWPT-CA	SRPC-3546-Q1_2008_OP15
MWGT-AA	SRPC-3546-Q1_2008_OP15		
Output DLIS Files			
DEFAULT	PERFO_054LUP	FN:53 PRODUCER	04-May-2008 00:13

Company: **Esso Australia Pty Ltd.**

Well: **A-22ST1**

Field: **Bream A**

Rig : **Prod4 / Crane**

Country: **Australia**

Schlumberger

2 1/8" Phased PowerJet Perforation
4 1/2" MPBT Plug
Setting Record