

Company: Esso Australia Pty Ltd.

Well: A-7
Field: Tuna
Rig: Mast

Country: Australia

Gamma Ray-Pressure
Temperature Survey
Dummy Plug Pass

Mast
Tuna
Gippsland
A-7
Esso Australia Pty Ltd.

LOCATION	
Gippsland	Elev.: K.B. 26.6 m
Basin	G.L. 91.4 m
Bass Strait	D.F. 26.6 m
Permanent Datum:	M.S.L. _____
Log Measured From:	K.B. _____ 26.6 m above Perm. Datum
Drilling Measured From:	K.B. _____

State: Victoria	Max. Well Deviation 56 deg	Longitude 148° 25' 05.29"E	Latitude 38° 10' 16.00"S
-----------------	----------------------------	----------------------------	--------------------------

Logging Date 17-Feb-2008

Run Number 1

Depth Driller 2767.5 m

Schlumberger Depth 2767.5 m

Bottom Log Interval 2764 m

Top Log Interval 2050 m

Casing Fluid Type Production Fluids

Casing Fluid Type

Salinity

Density

Fluid Level 1350 m

BIT/CASING/TUBING STRING

Bit Size 8.500 in

From 535 m

To 3273 m

Casing/Tubing Size 4.500 in

Weight 12.6 lbm/ft

Grade 13CR

From 1750 m

To 2832 m

Maximum Recorded Temperatures 217 degF

Logger On Bottom 17-Feb-2008 11:00

Unit Number 889 Prod 4 / AUSL

Recorded By S Gilbert

Witnessed By G Rimmer

Run 1

PVT DATA

Oil Density	
Water Salinity	
Gas Gravity	
Bo	
Bw	
1/Bg	
Bubble Point Pressure	
Bubble Point Temperature	
Solution GOR	
Maximum Deviation	56 deg

CEMENTING DATA

Primary/Squeeze	Primary
Casing String No	
Lead Cement Type	
Volume	
Density	
Water Loss	
Additives	
Tail Cement Type	
Volume	
Density	
Water Loss	
Additives	

Expected Cement Top

Logging Date

Run Number

Depth Driller

Schlumberger Depth

Bottom Log Interval

Top Log Interval

Casing Fluid Type

Casing Fluid Type

Salinity

Density

Fluid Level

BIT/CASING/TUBING STRING

Bit Size

From

To

Casing/Tubing Size

Weight

Grade

From

To

Maximum Recorded Temperatures

Logger On Bottom 11:00

Unit Number 889 Prod 4 / AUSL

Recorded By S Gilbert

Witnessed By G Rimmer

DEPTH SUMMARY LISTING

Date Created: 15-FEB-2008 12:48:09

Depth System Equipment

Depth Measuring Device		Tension Device		Logging Cable	
Type:	IDW-EB	Type:	PSDS/OSDS	Type:	2-32ZT
Serial Number:	6373	Serial Number:	325357	Serial Number:	27244
Calibration Date:	04-Jan-2007	Calibration Date:	15-Feb-2008	Length:	6409.94 M
Calibrator Serial Number:	9	Calibrator Serial Number:	1174	Conveyance Method: Wireline Rig Type: Offshore_Fixed	
Calibration Cable Type:	2-32ZT	Calibration Gain:	0.90		
Wheel Correction 1:	-2	Calibration Offset:	339.00		
Wheel Correction 2:	-4				

Depth Control Parameters

Log Sequence:	Subsequent Trip To the Well
Reference Log Name:	ExxonMobil Petrophysical Analysis
Reference Log Run Number:	
Reference Log Date:	.
Subsequent Trip Down Log Correction:	

Depth Control Remarks

1. IDW used as primary depth control
2. Z-Chart used as back-up
3.
4.
5. Rigged up utilising the MAST
6.

DISCLAIMER

THE USE OF AND RELIANCE UPON THIS RECORDED-DATA BY THE HEREIN NAMED COMPANY (AND ANY OF ITS AFFILIATES, PARTNERS, REPRESENTATIVES, AGENTS, CONSULTANTS AND EMPLOYEES) IS SUBJECT TO THE TERMS AND CONDITIONS AGREED UPON BETWEEN SCHLUMBERGER AND THE COMPANY, INCLUDING: (a) RESTRICTIONS ON USE OF THE RECORDED-DATA; (b) DISCLAIMERS AND WAIVERS OF WARRANTIES AND REPRESENTATIONS REGARDING COMPANY'S USE OF AND RELIANCE UPON THE RECORDED-DATA; AND (c) CUSTOMER'S FULL AND SOLE RESPONSIBILITY FOR ANY INFERENCE DRAWN OR DECISION MADE IN CONNECTION WITH THE USE OF THIS RECORDED-DATA.

OTHER SERVICES1
OS1: None
OS2:
OS3:
OS4:
OS5:
REMARKS: RUN NUMBER 1
Log correlated to ExxonMobil Solar Composite Log supplied with logging program.
Objectives:Conduct Static and Flowing Pressure / Temperature Log to diagnose a possible Leaking Plug 2768m MDKB
Maximum Deviation = 56 deg @ 1950m MDKB
No Well flow could be achieved due to a damaged Choke Valve on the Flow line .
HUD Tagged @ 2751m MDKB







SBHT: 216.7 deg f
SBHP: 2561 psia

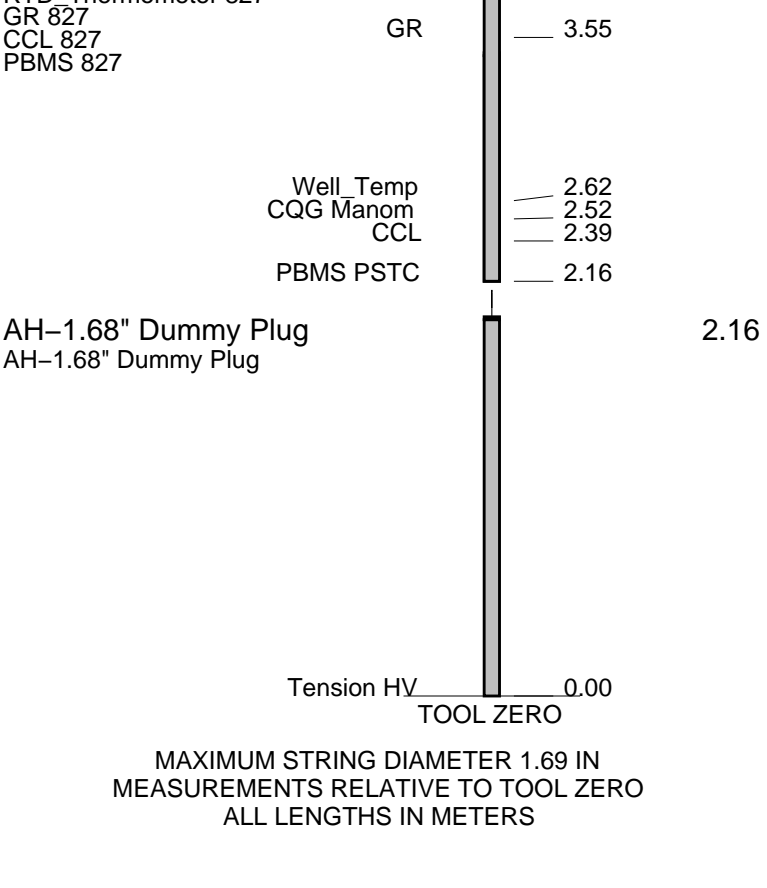
1.68 Dummy Plug Ran to ensure access for Posiset Plug.

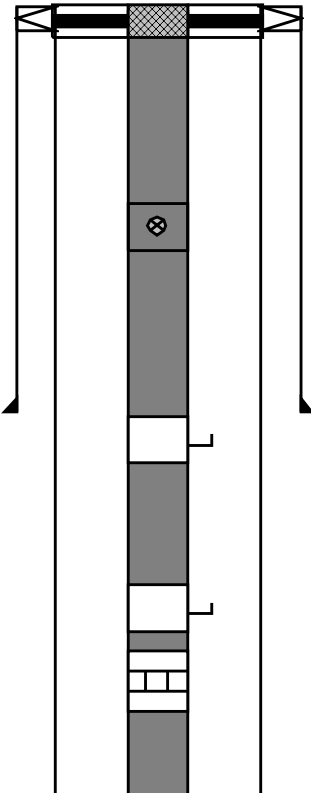
Schlumberger crews: J Light , C Shiells

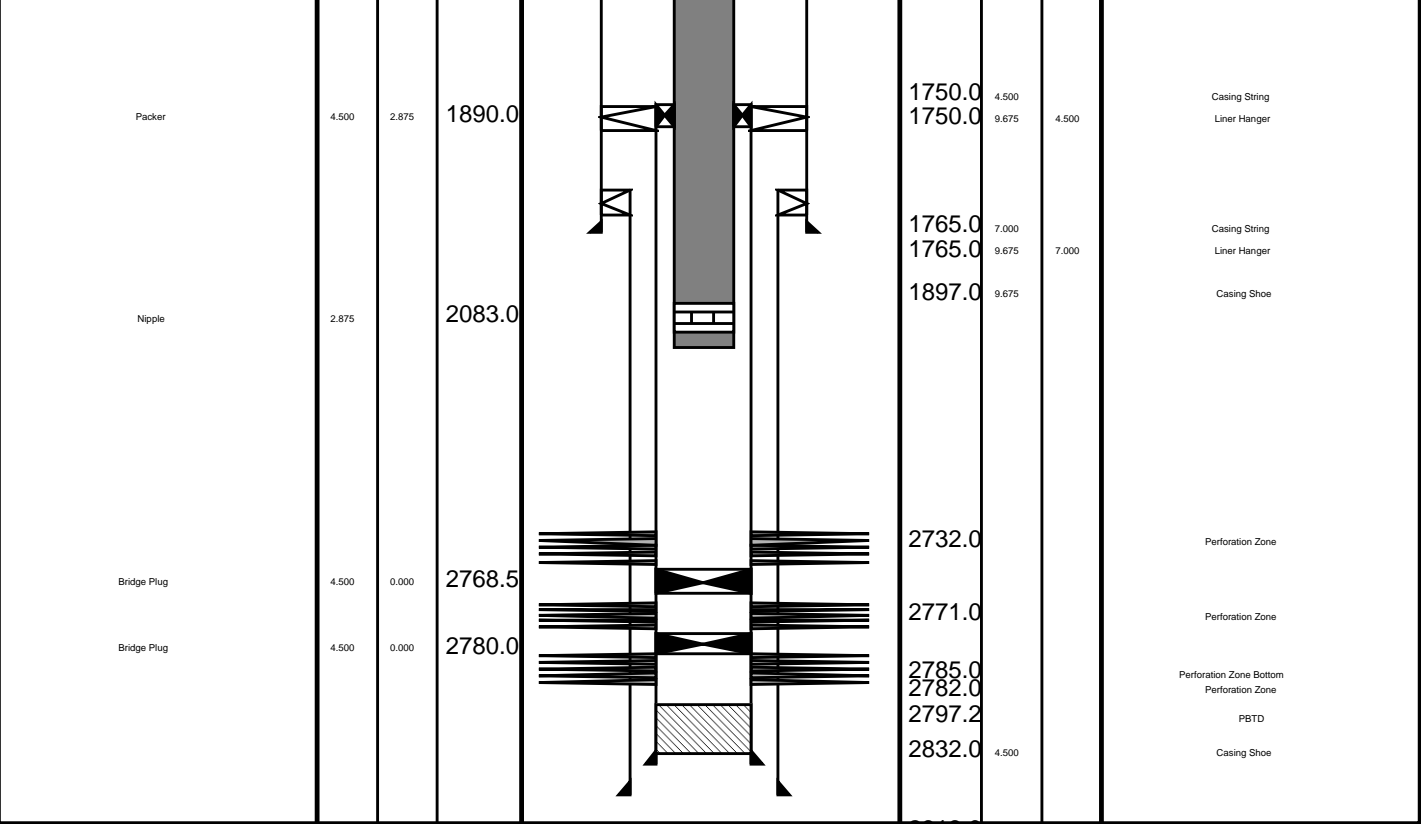
RUN 1					
SERVICE ORDER #:	AUSL07336278				
PROGRAM VERSION:	15C0-309				
FLUID LEVEL:	1350 m				
LOGGED INTERVAL	START	STOP	LOGGED INTERVAL	START	STOP

EQUIPMENT DESCRIPTION

RUN 1		RUN 2	
SURFACE EQUIPMENT			
WITM-A 827 PSC_16MHZ 827			
DOWNHOLE EQUIPMENT			
SWBS-B 785		8.91	
SWBS-B 786		8.22	
SWBS-B 787		7.54	
SWHS-A 759		6.85	
EQF-43		6.51	
PSPT-B 827 PSC-A 827 PSPT-B 827 PSTC 827 PBMS-B 827 CQG_F Mano 827 RTD Thermometer 827	 <div>Detail MT TelStatus CTEM</div>	4.68	



Production String	(in)		(m)	Well Schematic	(m)	(in)		Casing String
	OD	ID	MD		MD	OD	ID	
Tubing Tubing Hanger	2.875		13.5		14.5	13.375		Casing String Casing String Liner Hanger
	9.875	2.875	13.4		14.5	9.675		
					14.5	13.375	9.675	
SSSV	2.875		447.0					Casing Shoe
Gas Lift Mandrel	2.875		1060.0		735.0	13.375		
Gas Lift Mandrel	2.875		1615.0					
Nipple	2.875		1630.0					



Job Events Summary

MAXIS Field Log

Schlumberger Job Event Summary

Time	Elapsed Time	Depth (M)	File
Log Pass (up)	17-Feb-2008 14:11	000:11	2761.2 - 2655.7 PSP_019LUP
Station Log	17-Feb-2008 14:40	000:50	2747.5 - 7.6 PSP_023LTP
Log Pass (up)	17-Feb-2008 15:31	000:36	2747.5 - 2036.2 PSP_024LUP

Company: Esso Australia Pty Ltd. Well: A-7

Input DLIS Files

DEFAULT PSP_024LUP FN:23 PRODUCER 17-Feb-2008 15:31 2747.5 M 2036.2 M

Output DLIS Files

DEFAULT PSP_025PUP FN:24 PRODUCER 17-Feb-2008 16:12 2747.6 M 2032.1 M

OP System Version: 15C0-309
MCM

PSPT-B SRPC-3546-Q1_2008_OP15

PIP SUMMARY

Time Mark Every 60 S

Temperature
(WTEP)
(DEGF)

Amplified Well Pressure (WPRE)
(PSIA) 0 20

Well Pressure (WPRE)
(PSIA) 1900 2500

Well Temperature (WTEP)
(DEGF) 0 2

Well Pressure (WPRE) (PSIA) 0 Tension (TENS) (LBF) 0 1000

Perfo
Zone
From
PERFO
CURVE to
D3T

Well Temperature (WTEP)
(DEGF) 180 220

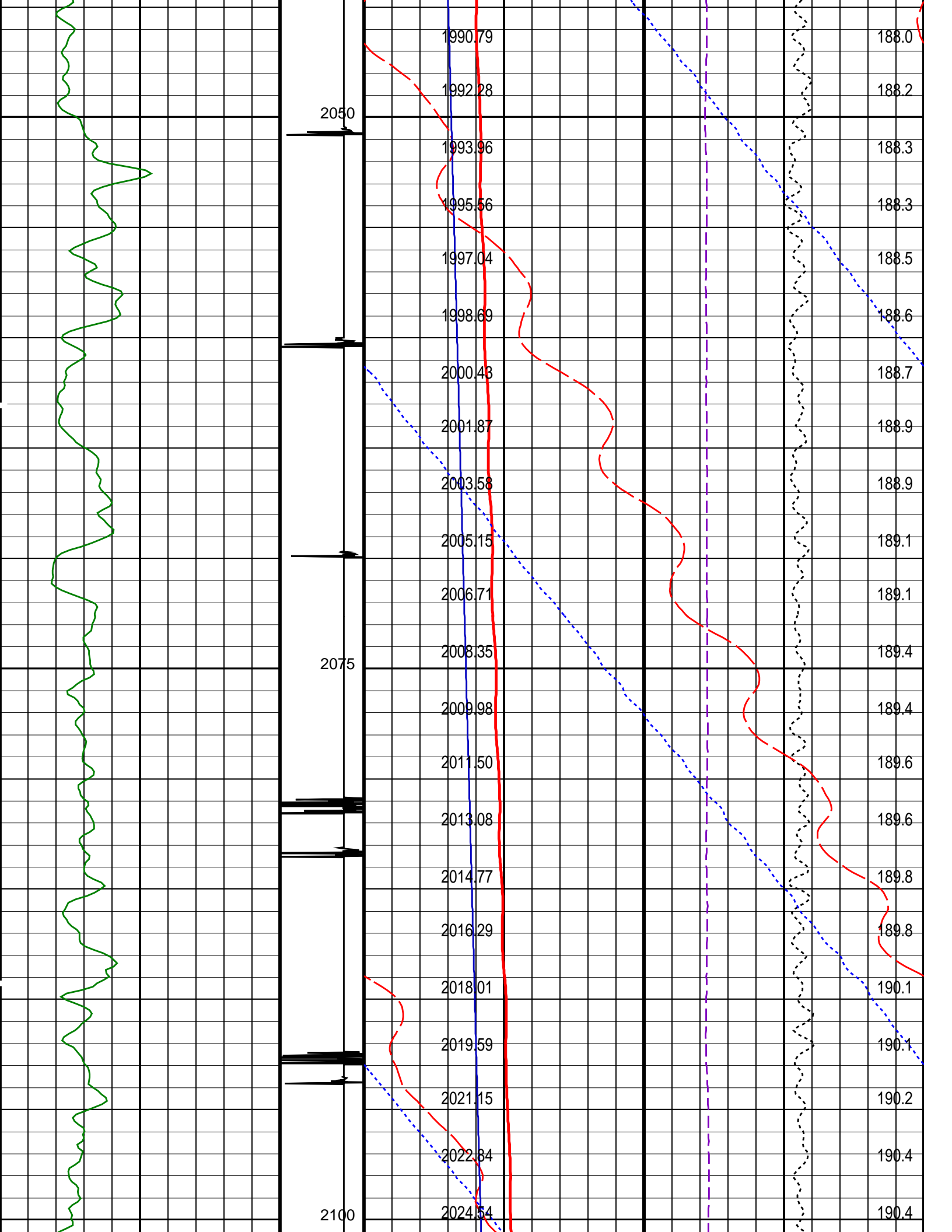
Gamma Ray (GR)
(GAPI) 0 150

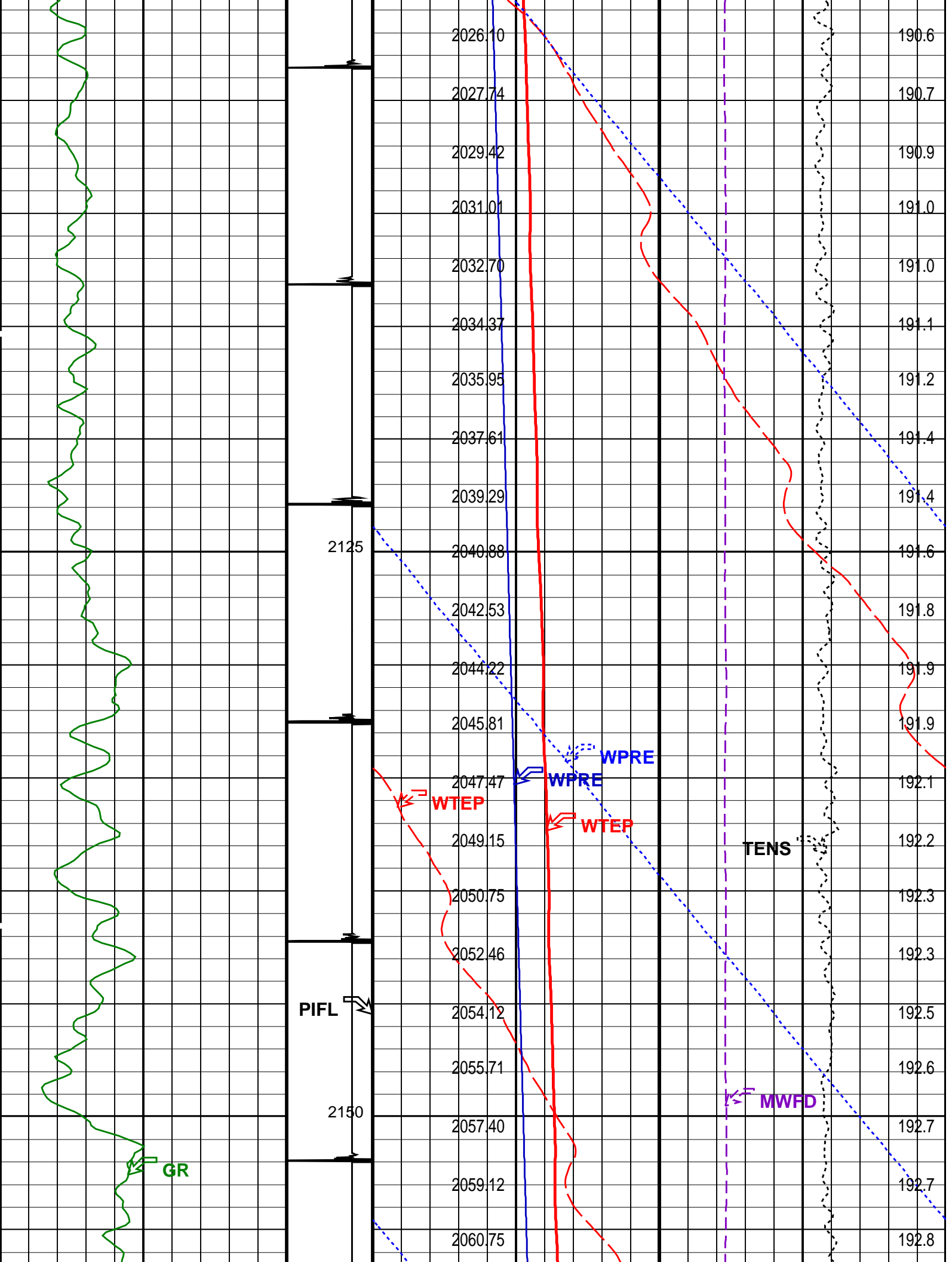
Discriminat
ed CCL
(CCLD)
(V) -1

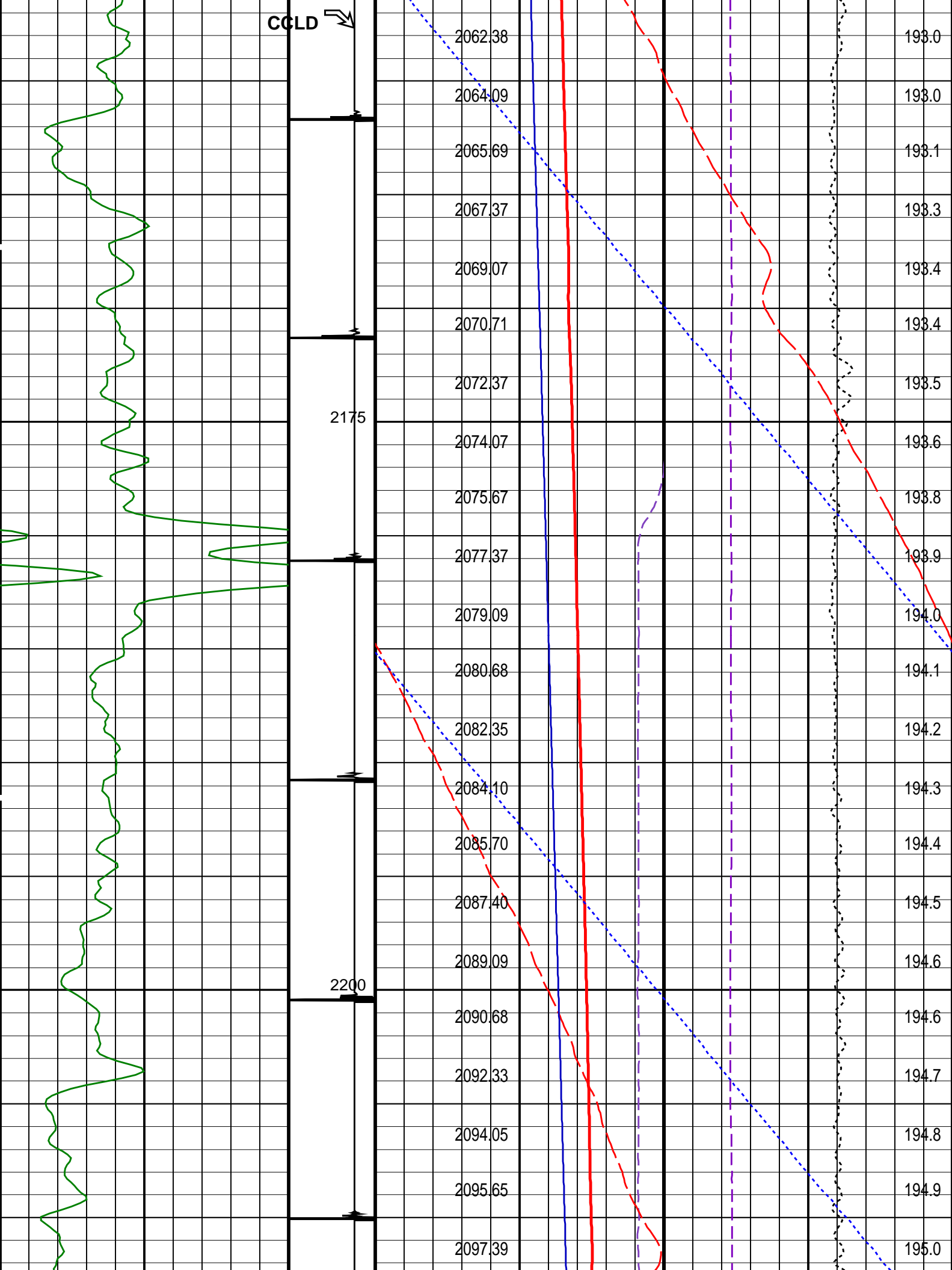
Cable Speed (CS)
(F/HR) 0 5000

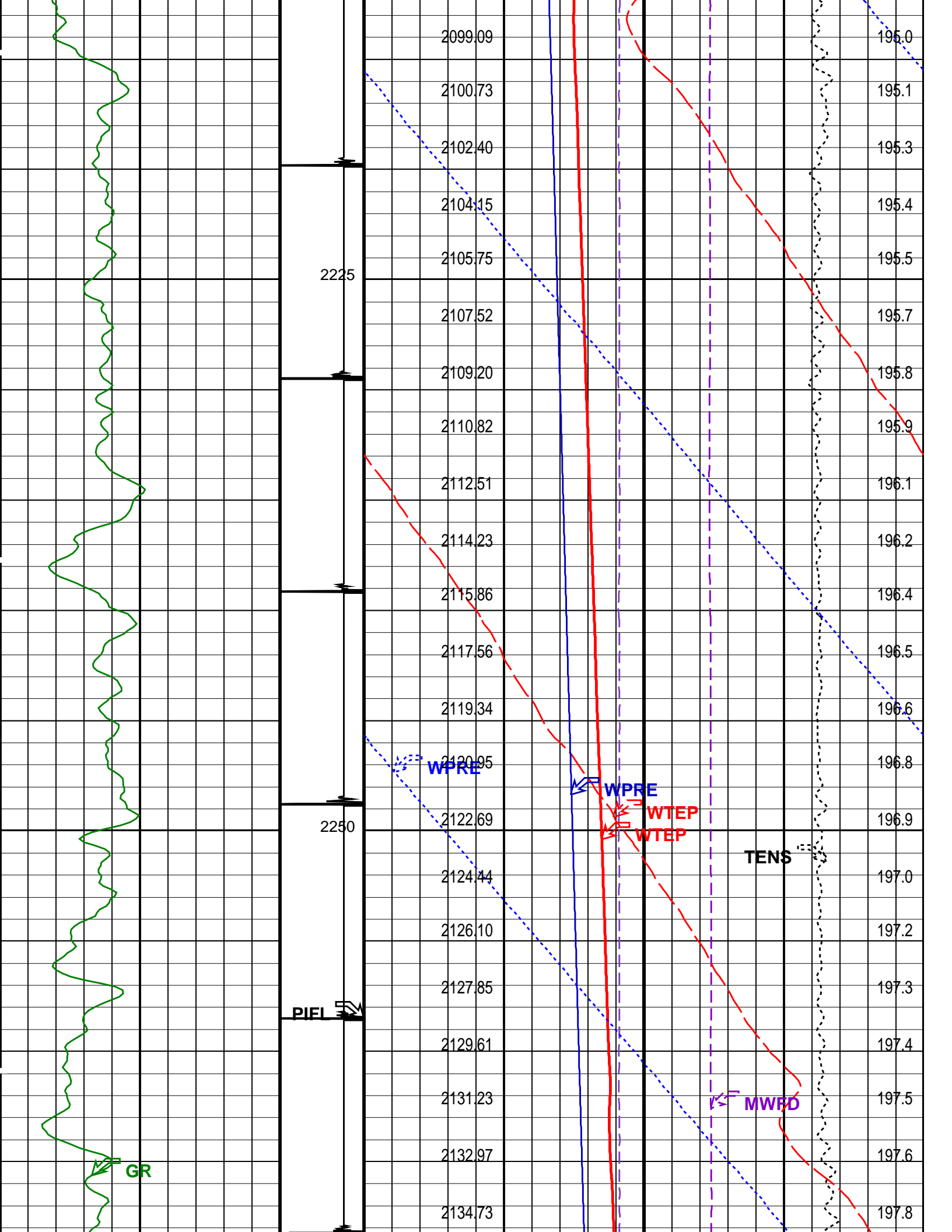
Manometer Well Fluid Density (MWFD)
(G/C3) 0 2

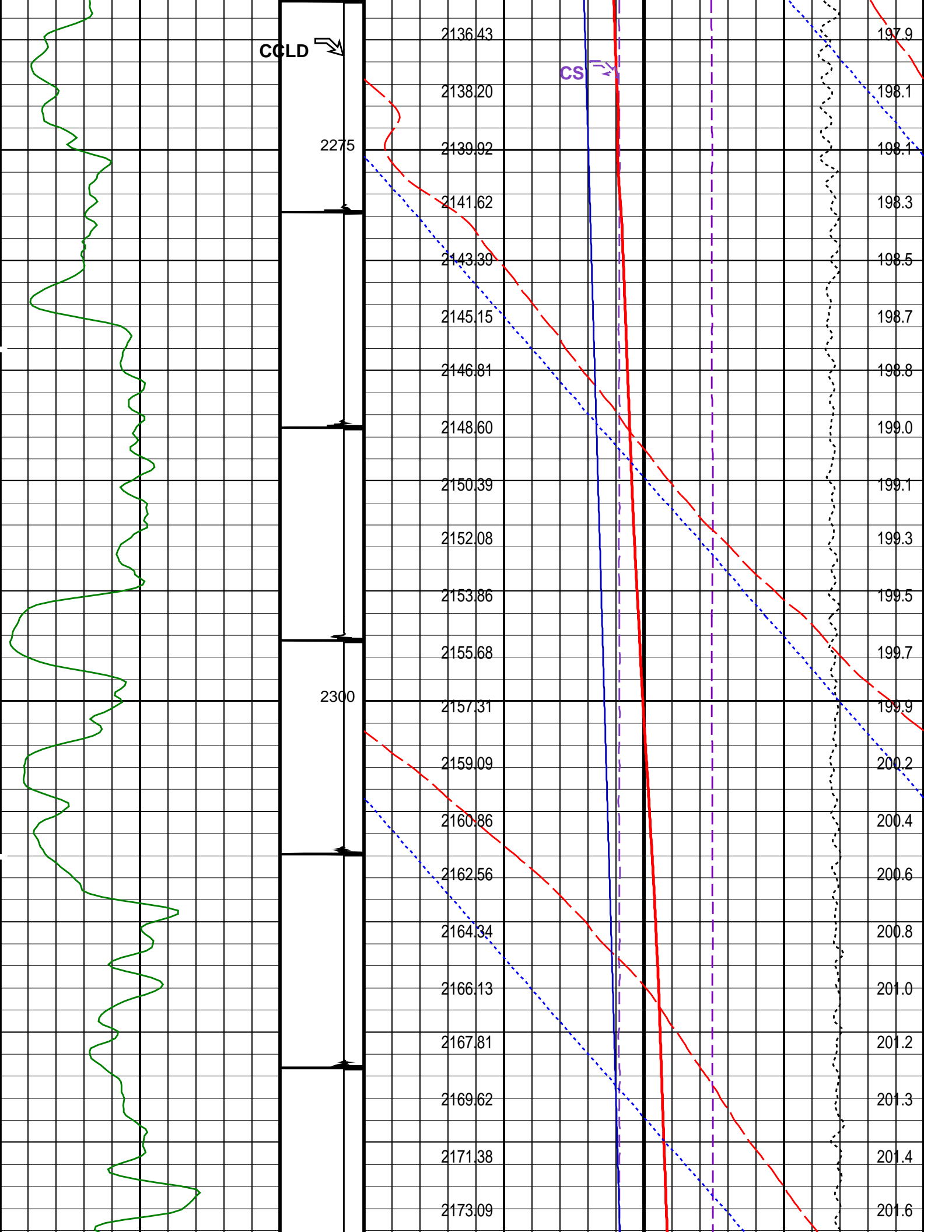


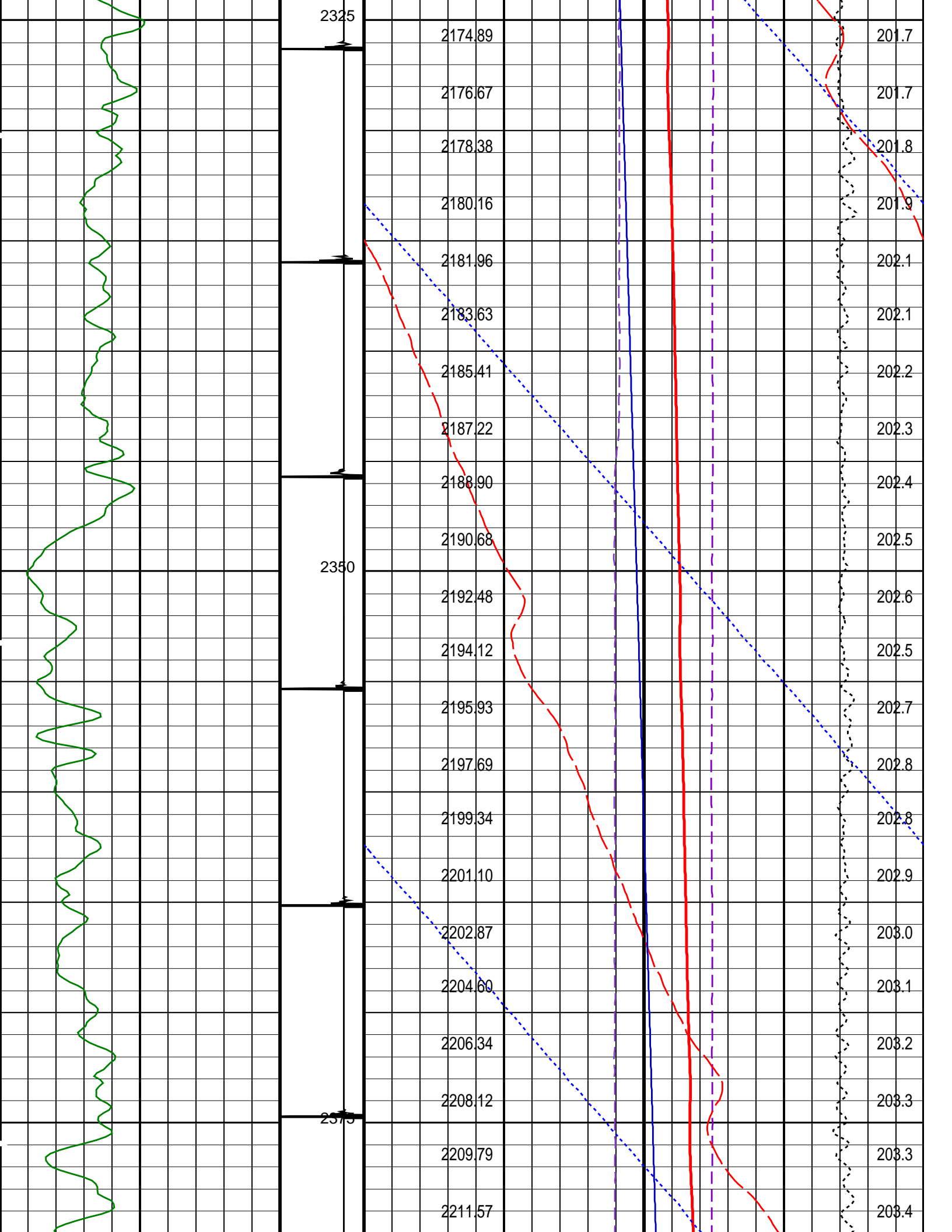


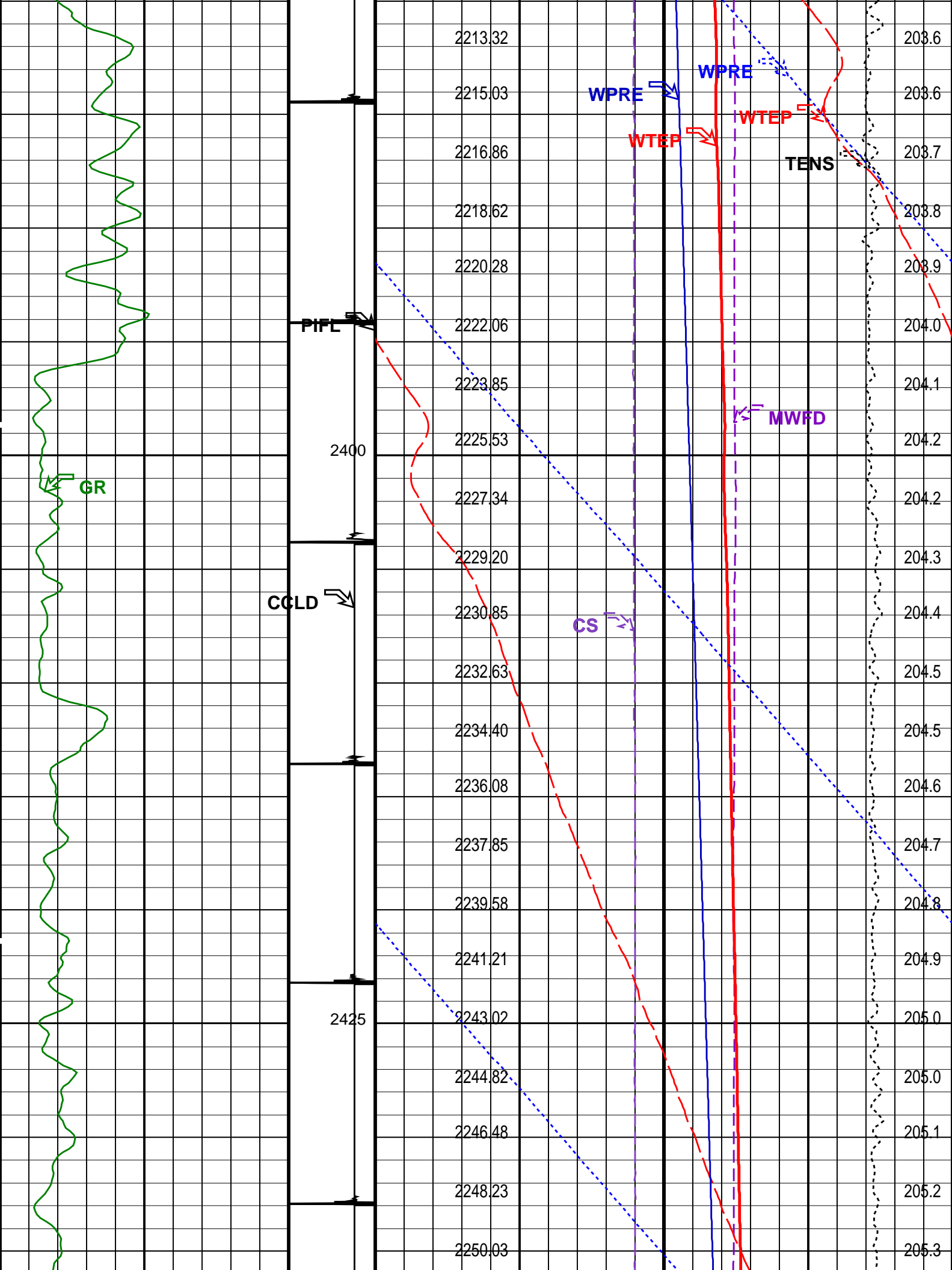


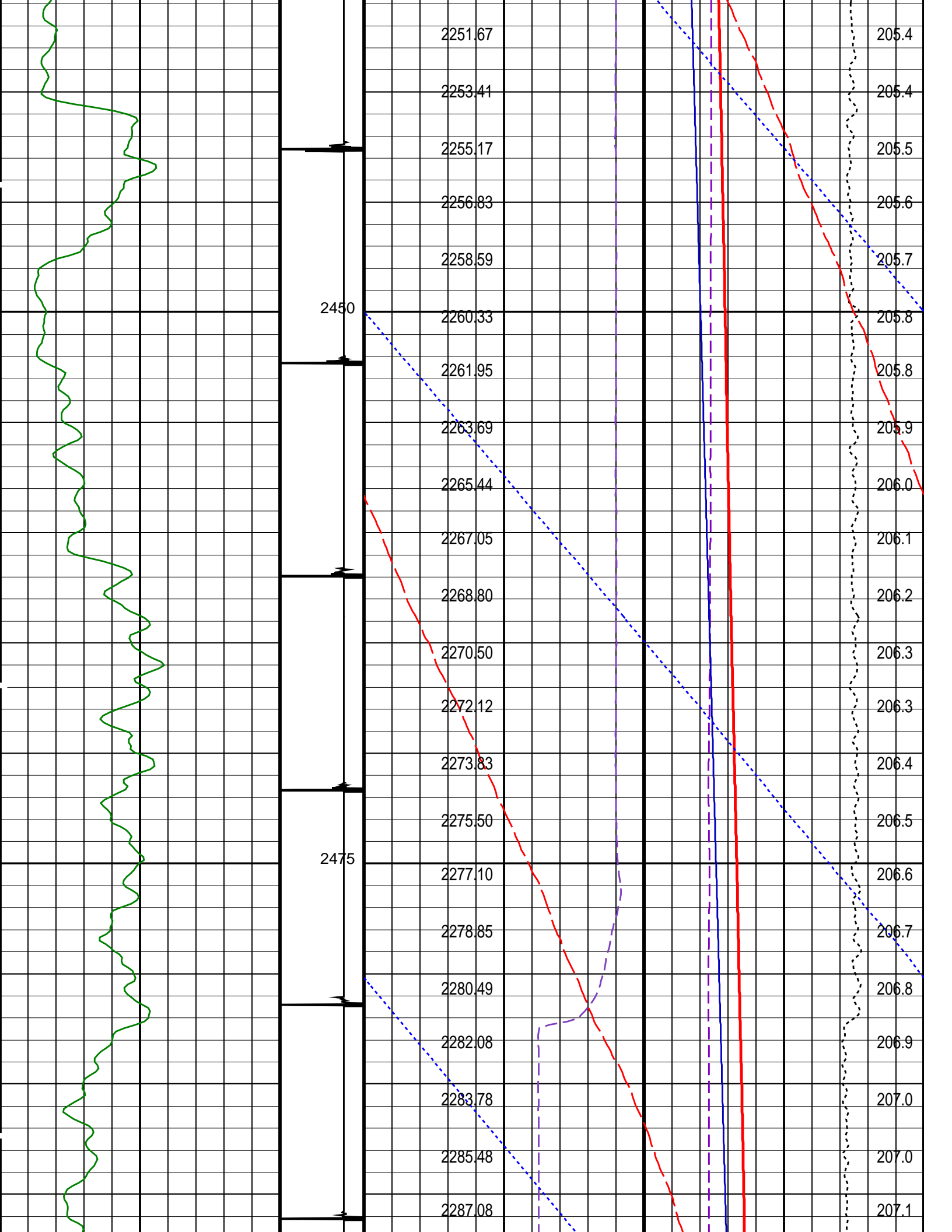


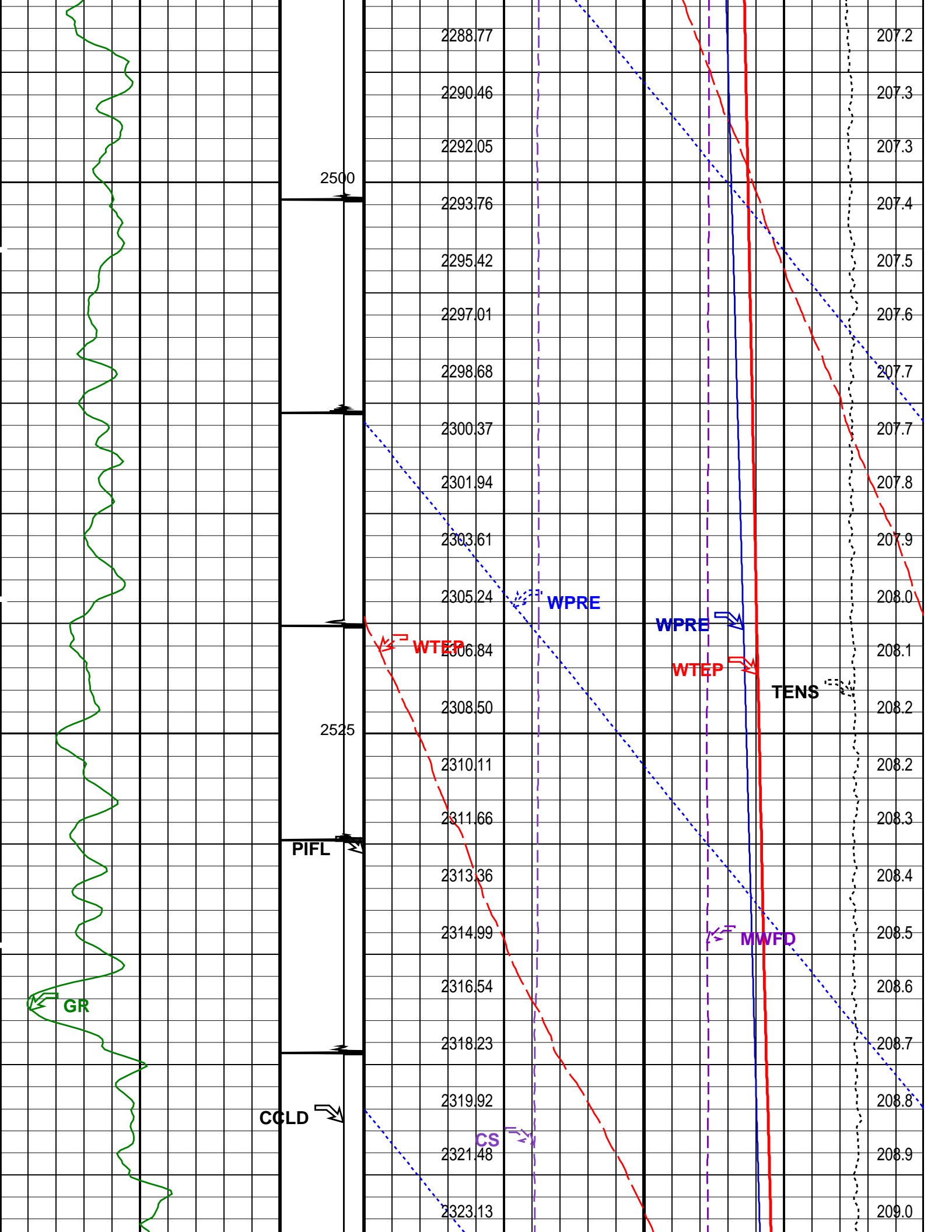


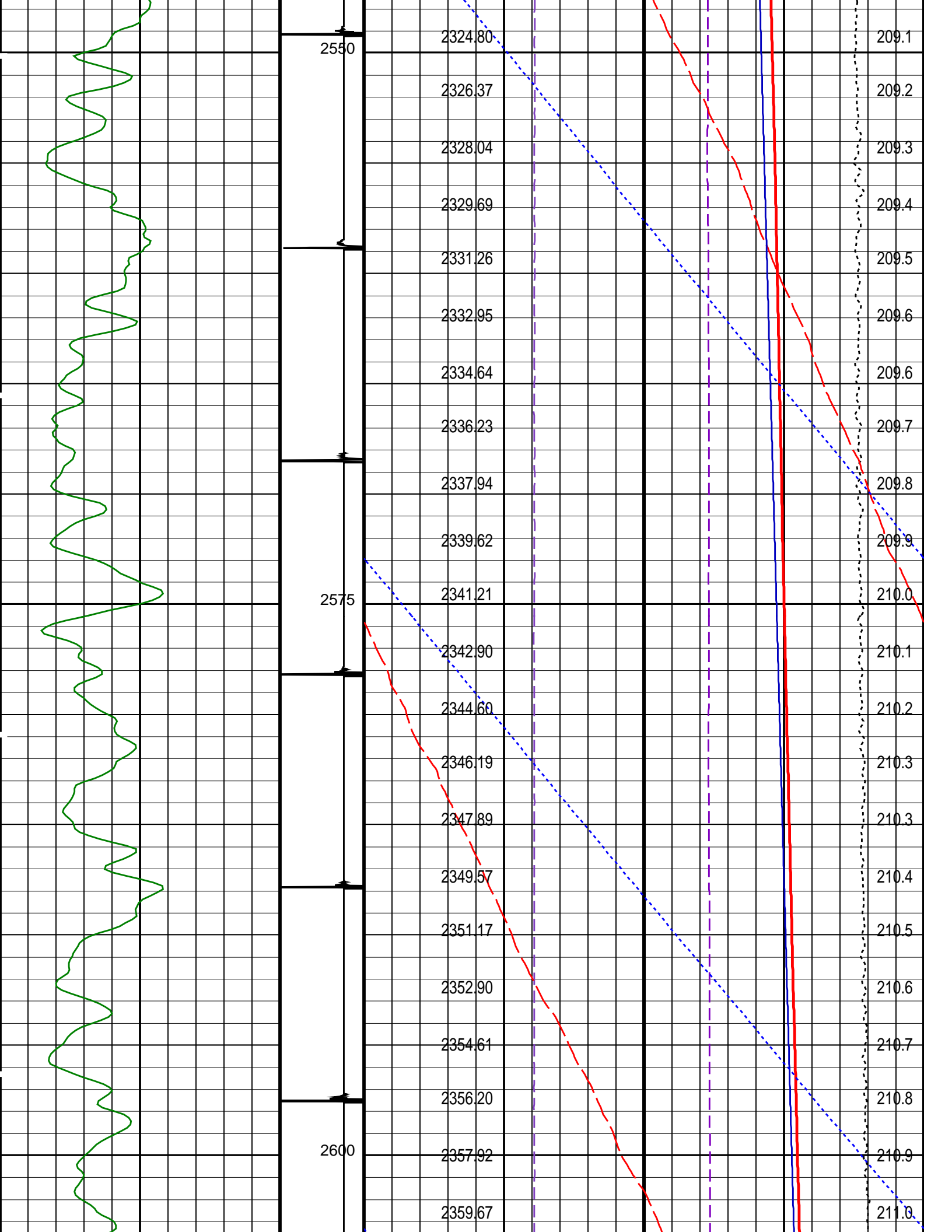


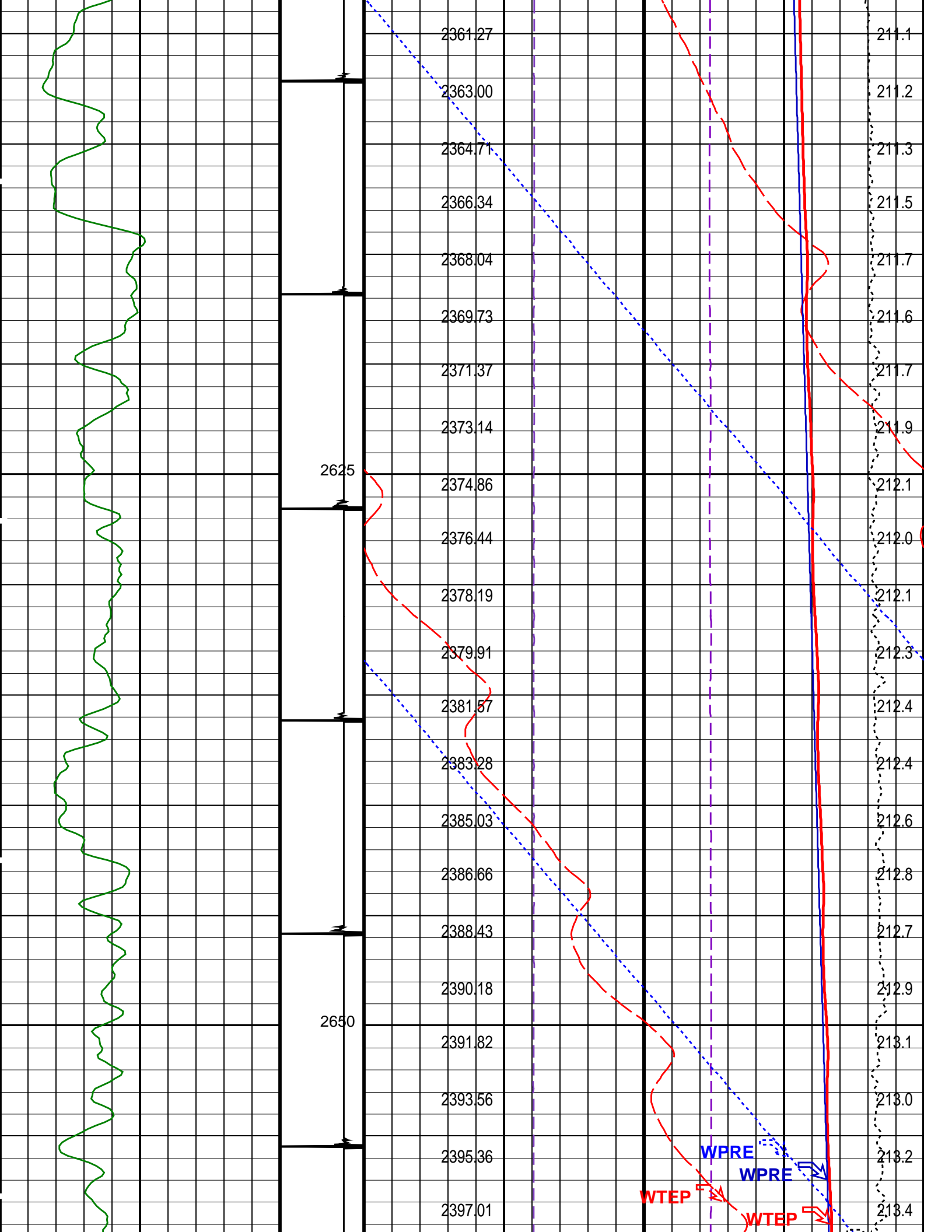


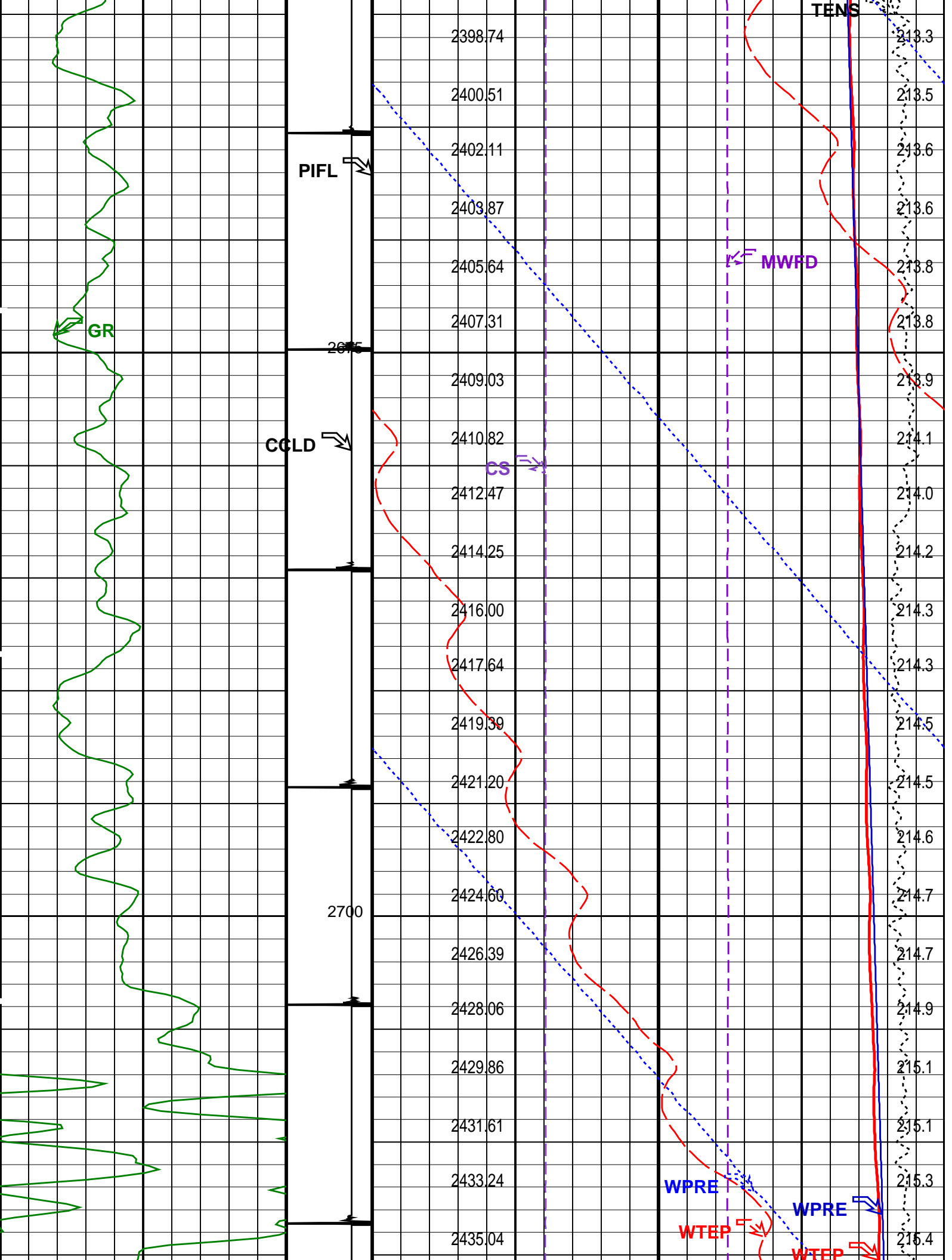


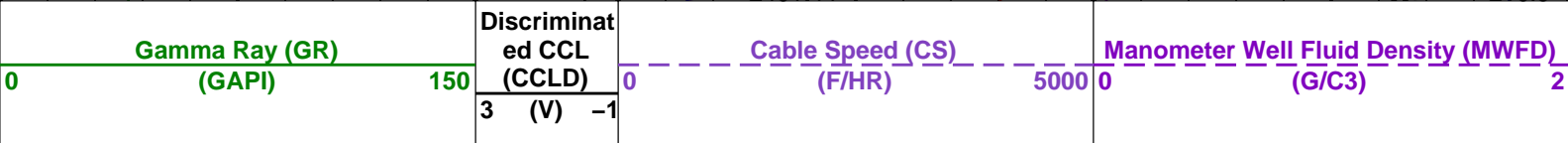
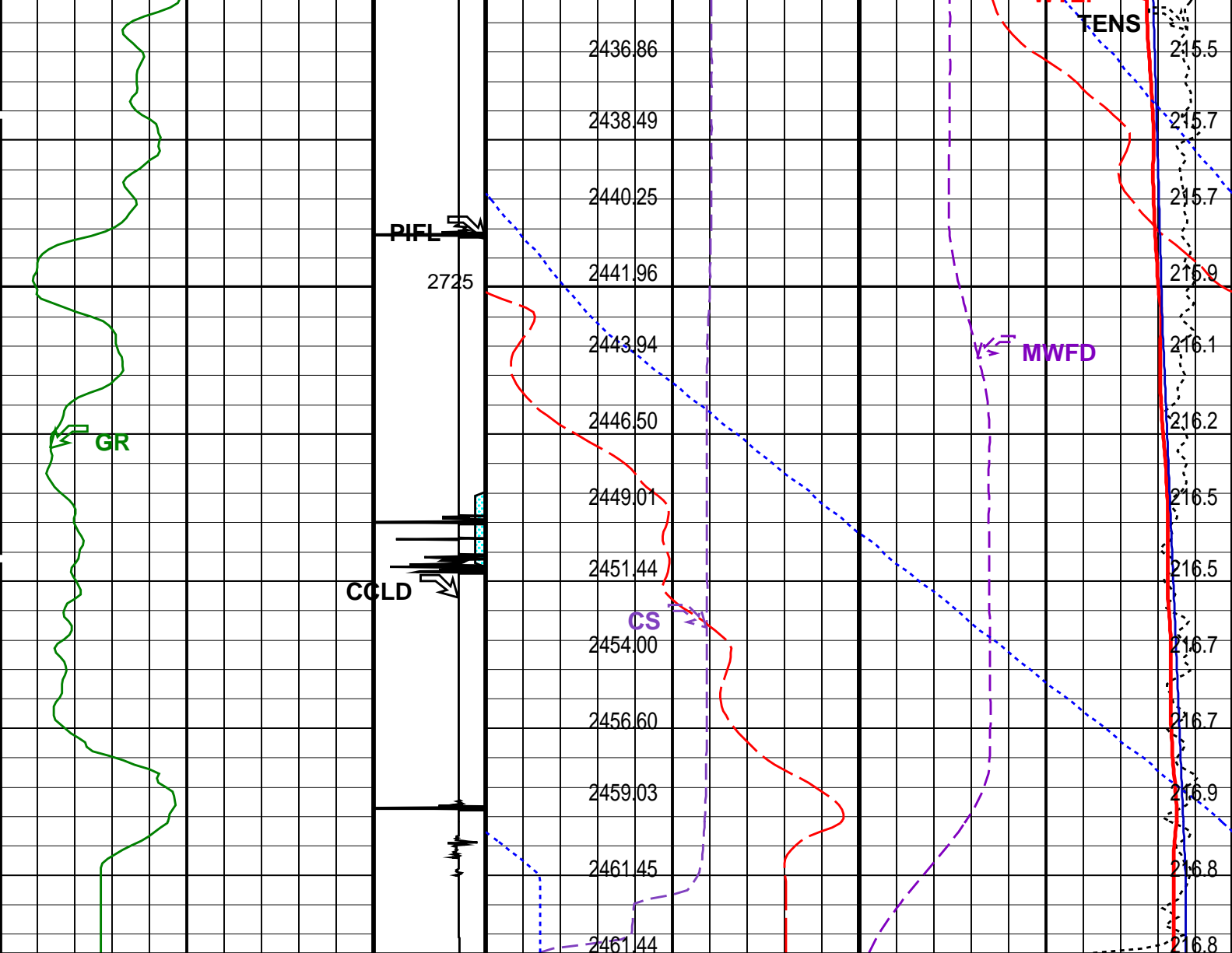




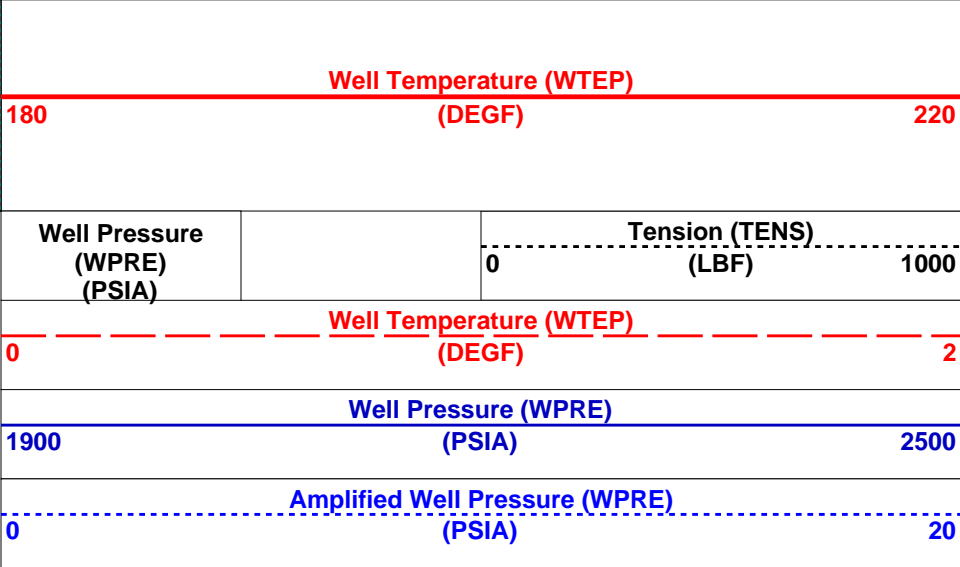








Perfo
Zone
From
PERFO_
CURVE to
D3T




Temperature
(WTEP)
(DEGF)

PIP SUMMARY

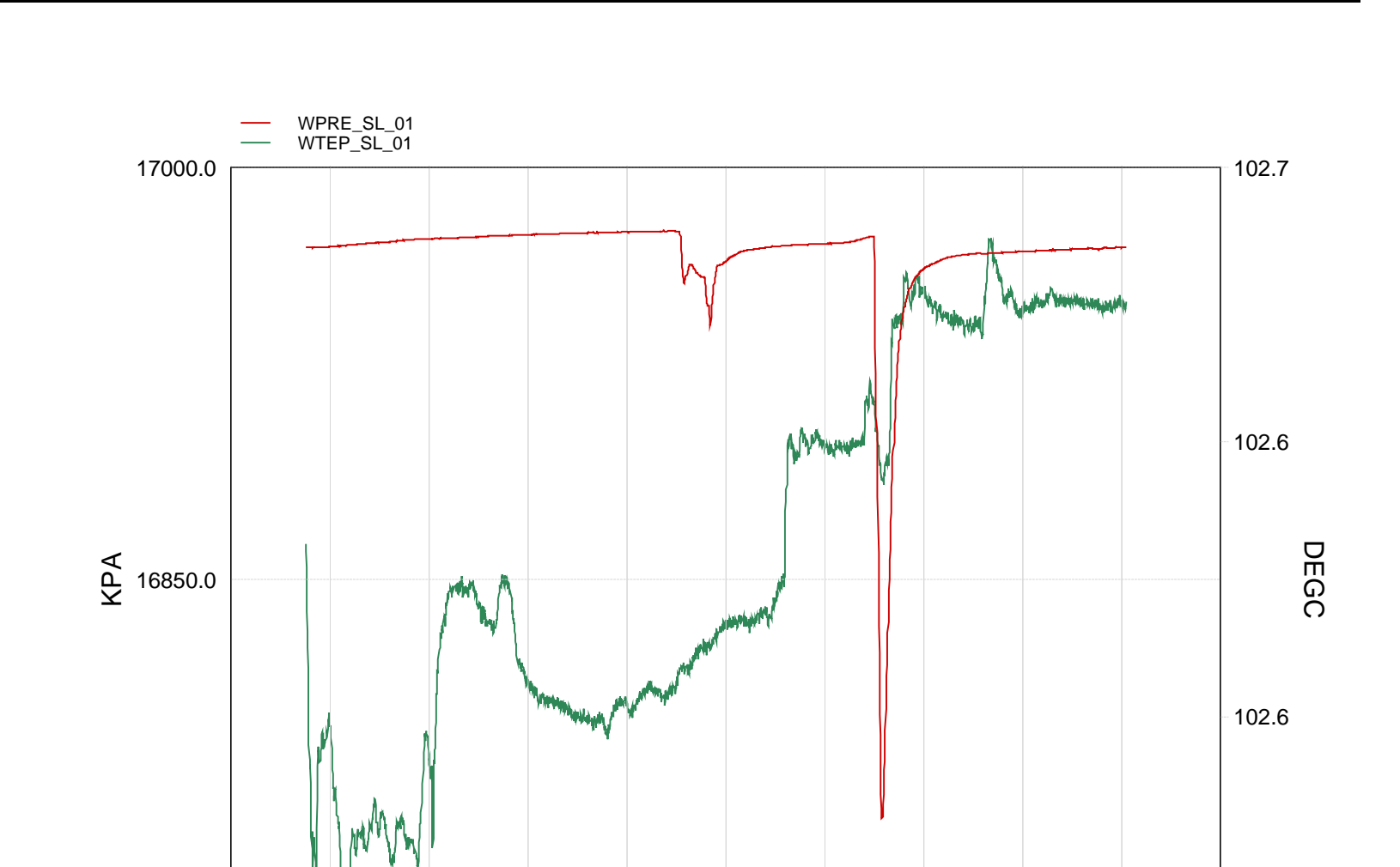
Parameters			
DLIS Name	Description	Value	
GDEV	PSPT-B: Production Services Logging Platform		
	Average Angular Deviation of Borehole from Normal	0	DEG
DO	System and Miscellaneous		
	Depth Offset for Playback	0.1	M
PP	Playback Processing	NORMAL	

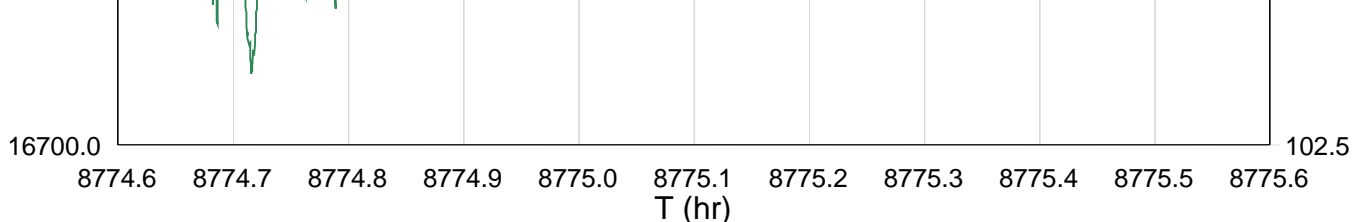
Input DLIS Files						
DEFAULT	PSP_024LUP	FN:23	PRODUCER	17-Feb-2008 15:31	2747.5 M	2036.2 M
Output DLIS Files						
DEFAULT	PSP_025PUP	FN:24	PRODUCER	17-Feb-2008 16:12		



Attempt to Flow the Well
(Sensor Depth @ 2745m MDKB)

MAXIS Field Log





TIME DEGF PSIA

11280.0000	216.6954	2461.4314
11400.0000	216.5864	2461.4710
11520.0000	216.5672	2461.6255
11640.0000	216.5748	2461.7735
11760.0000	216.6015	2461.8796
11880.0000	216.6757	2461.9400
12000.0000	216.6773	2462.0341
12120.0000	216.6315	2462.0916
12240.0000	216.6236	2462.1594
12360.0000	216.6217	2462.1899
12480.0000	216.6212	2462.2369
12600.0000	216.6300	2462.2658
12720.0000	216.6460	2459.9763
12840.0000	216.6593	2460.9163
12960.0000	216.6656	2461.3922
13080.0000	216.7332	2461.5509
13200.0000	216.7361	2461.6221
13320.0000	216.7416	2461.8856
13440.0000	216.7949	2453.9185
13560.0000	216.8026	2460.4522
13680.0000	216.7934	2461.0093
13800.0000	216.8196	2461.1164
13920.0000	216.7981	2461.2101
14040.0000	216.8040	2461.2862
14160.0000	216.8006	2461.3500
14280.0000	216.7994	2461.4103

Flowong the well was abandoned due to
a damaged choke valve on the flow line.

Schlumberger

Static Dummy Plug / Pressure
Temperature Log (HUD to 2670m)

MAXIS Field Log

Company: Esso Australia Pty Ltd.

Well: A-7

Input DLIS Files

DEFAULT PSP_019LUP FN:18 PRODUCER 17-Feb-2008 14:11 2761.2 M 2655.7 M

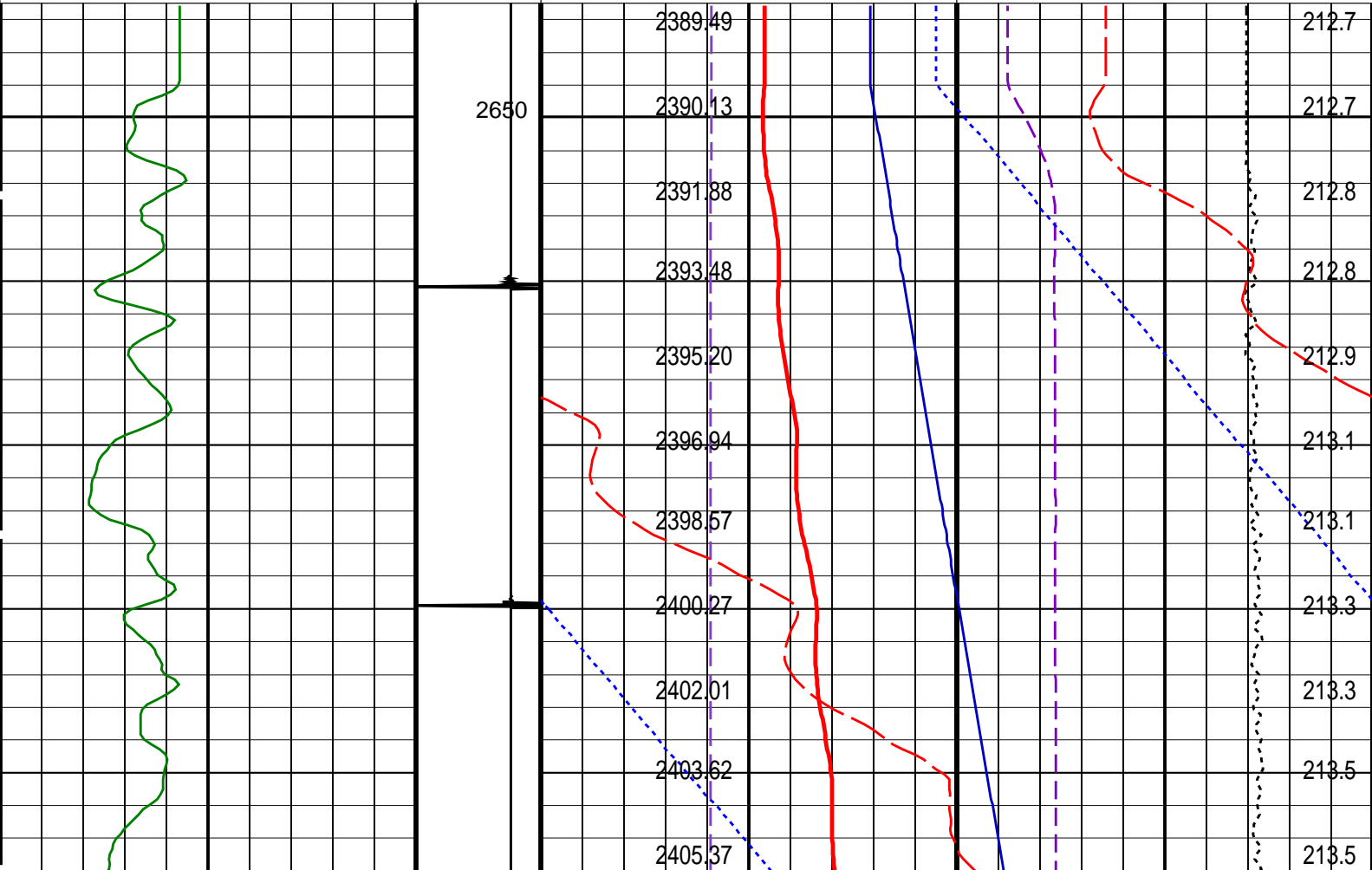
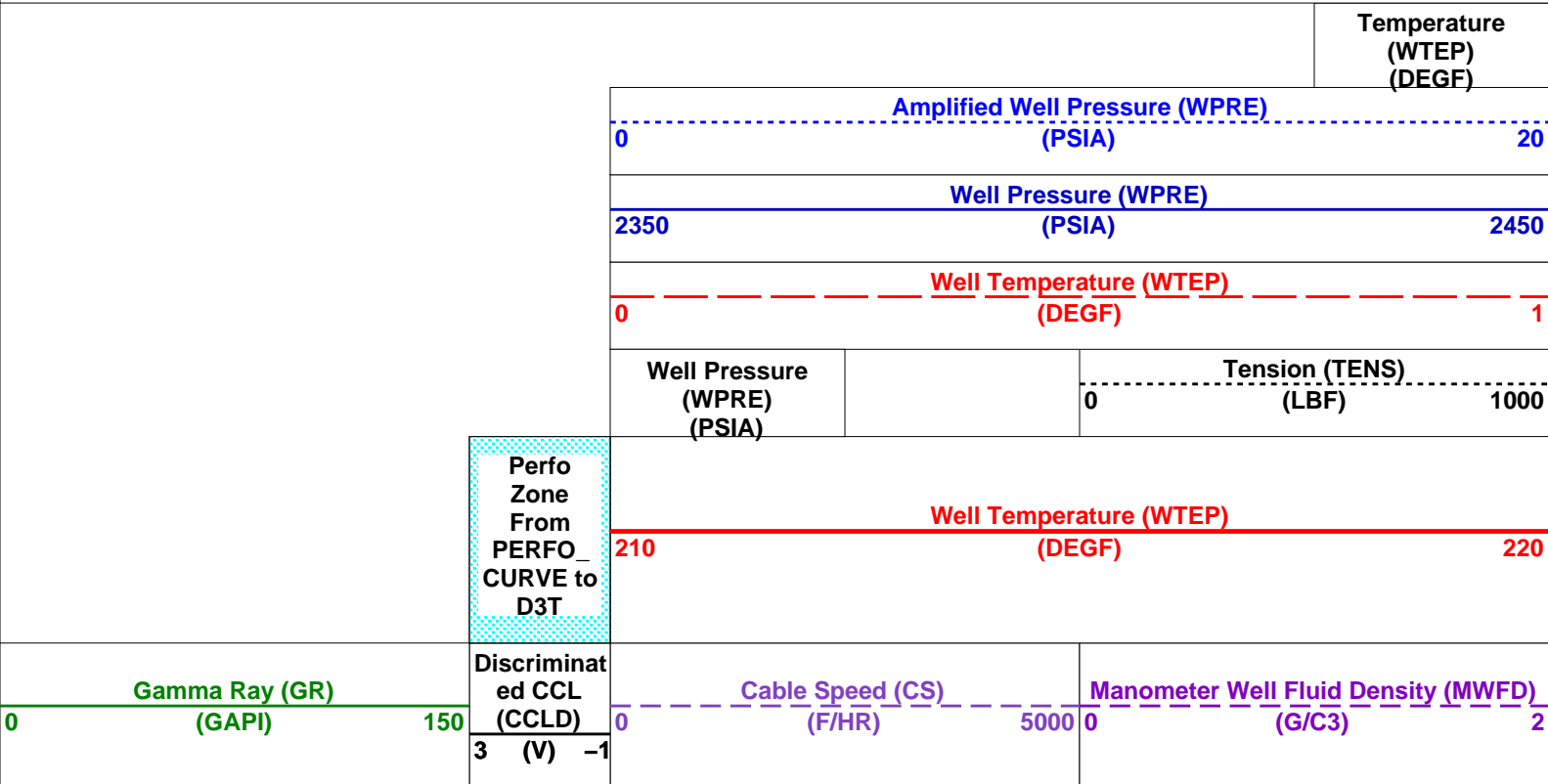
Output DLIS Files

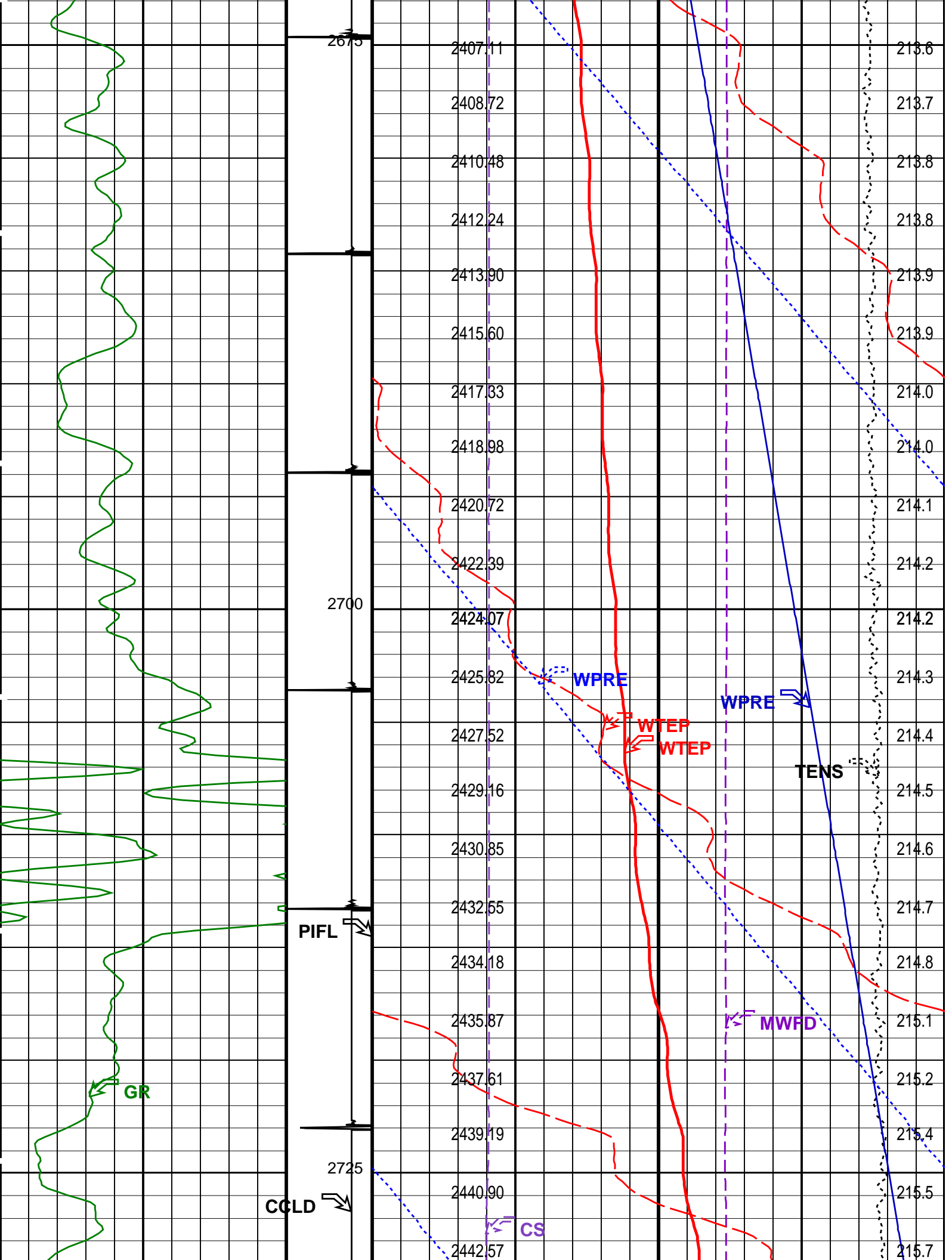
OP System Version: 15C0-309
MCM

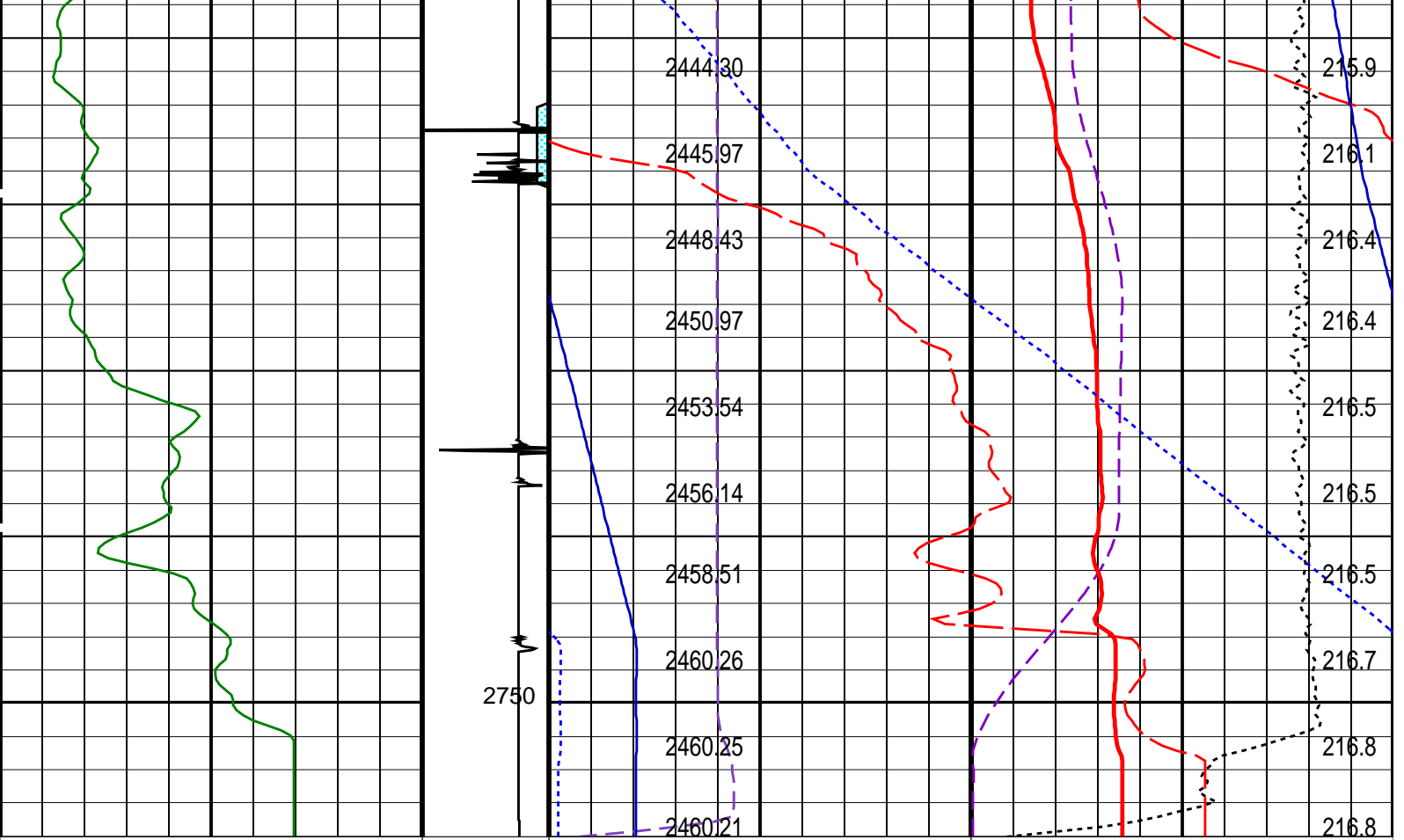
PSPT-B SRPC-3546-Q1_2008_OP15

PIP SUMMARY

Time Mark Every 60 S







Gamma Ray (GR) (GAPI)		Discriminat ed CCL (CCLD) (V)	Cable Speed (CS) (F/HR)		Manometer Well Fluid Density (MWFD) (G/C3)	
0	150		0	5000	0	2

Perfo Zone From PERFO_ CURVE to D3T	Well Temperature (WTEP) (DEGF)	
	210	220
	Well Pressure (WPRE) (PSIA)	Tension (TENS) (LBF)
	0	1000
	Well Temperature (WTEP) (DEGF)	
	0	1
Well Pressure (WPRE) (PSIA)		2450
2350		
Amplified Well Pressure (WPRE) (PSIA)		20
0		
		Temperature (WTEP) (DEGF)

PIP SUMMARY	
Time Mark Every 60 S	

Format: PSP_1	Vertical Scale: 1:200	Graphics File Created: 17-Feb-2008 14:27
---------------	-----------------------	--

OP System Version: 15C0-309 MCM	
PSPT-B	SRPC-3546-Q1_2008_OP15

Parameters	
Plus Name	Description
	Value

DLIS Name	Description	Value
GDEV	PSPT-B: Production Services Logging Platform Average Angular Deviation of Borehole from Normal	0 DEG
DO	System and Miscellaneous Depth Offset for Playback	-7.2 M
PP	Playback Processing	NORMAL

Input DLIS Files					
DEFAULT	PSP_019LUP	FN:18	PRODUCER	17-Feb-2008 14:11	2761.2 M 2655.7 M
Output DLIS Files					
DEFAULT	PSP_022PUP	FN:21	PRODUCER	17-Feb-2008 14:27	

Company:	Esso Australia Pty Ltd.	Schlumberger
Well:	A-7	
Field:	Tuna	
Rig:	Mast	
Country:	Australia	
Gamma Ray-Pressure Temperature Survey Dummy Plug Pass		