

Company: Esso Australia Pty Ltd

Well: CBA A6

Field: Cobia

Rig: Rig 22

Country: Australia

3.65" Powercutter
Tubing Cut Record

Rig 22

Cobia

Gippsland

CBA A6

Esso Australia Pty Ltd

LOCATION

Gippsland

Basin

Bass Strait

Permanent Datum: MSL

Log Measured From: DF

Drilling Measured From: DF

Elev.: K.B. 32.4 m

G.L. -79 m

D.F. 32.4 m

Elev.: 0 m

32.4 m above Perm. Datum

State: Victoria

Max. Well Deviation 57 deg

Longitude 148° 18' 28.3" E

Latitude 38° 27' 03.5" S

Rig: Rig 22

Field: Cobia

Location: Gippsland

Well: CBA A6

Company: Esso Australia Pty Ltd

Logging Date	16-Dec-2007		
Run Number	1		
Depth Driller	3650 m		
Schlumberger Depth	3460.2 m		
Bottom Log Interval	3441 m		
Top Log Interval	3441 m		
Casing Fluid Type	Brine		
Salinity			
Density	8.55 lb/g		
Fluid Level			
BIT/CASING/TUBING STRING			
Bit Size	9.875 in		
From			
To			
Casing/Tubing Size	4.500 in		
Weight	17 lbm/ft		
Grade	K-55		
From	12.1 m		
To	3464.41 m		
Maximum Recorded Temperatures			
Logger On Bottom	17-Dec-2007	Time	4:30
Unit Number	3827	AUSL	
Recorded By	A. Sword, R. Sani		
Witnessed By	Mr A. Smyth . Mr. B Woodward		

PVT DATA			
Oil Density	Run 1	Run 2	R
Water Salinity			
Gas Gravity			
Bo			
Bw			
1/Bg			
Bubble Point Pressure			
Bubble Point Temperature			
Solution GOR			
Maximum Deviation	57 deg		
CEMENTING DATA			
Primary/Squeeze	Primary		
Casing String No			
Lead Cement Type			
Volume			
Density			
Water Loss			
Additives			
Tail Cement Type			
Volume			
Density			
Water Loss			
Additives			
Expected Cement Top			
Logging Date			
Run Number			
Depth Driller			
Schlumberger Depth			
Bottom Log Interval			
Top Log Interval			
Casing Fluid Type			
Salinity			
Density			
Fluid Level			
BIT/CASING/TUBING STRING			
Bit Size			
From			
To			
Casing/Tubing Size			
Weight			
Grade			
From			
To			
Maximum Recorded Temperatures			
Logger On Bottom	Time		
Unit Number	Location		
Recorded By			
Witnessed By			

Date Created: 18-DEC-2007 9:11:31

Logging Cable

Type:	2-32ZT
Serial Number:	24187
Length:	6149.95 M
Conveyance Method:	Wireline
Rig Type:	Offshore Fixed

Log Sequence:	Subsequent Trip To the Well
Reference Log Name:	Tubing Tally
Reference Log Run Number:	Not provided
Reference Log Date:	Not Provided

1. IDW used as primary depth control
2. Z Chart used as a secondary depth control
3. Log correlated to Tubing Tally dated 30-Nov-2007 provided by client.
- 4.
- 5.
- 6.

THE USE OF AND RELIANCE UPON THIS RECORDED-DATA BY THE HEREIN NAMED COMPANY (AND ANY OF ITS AFFILIATES, PARTNERS, REPRESENTATIVES, AGENTS, CONSULTANTS AND EMPLOYEES) IS SUBJECT TO THE TERMS AND CONDITIONS AGREED UPON BETWEEN SCHLUMBERGER AND THE COMPANY, INCLUDING: (a) RESTRICTIONS ON USE OF THE RECORDED-DATA; (b) DISCLAIMERS AND WAIVERS OF WARRANTIES AND REPRESENTATIONS REGARDING COMPANY'S USE OF AND RELIANCE UPON THE RECORDED-DATA; AND (c) CUSTOMER'S FULL AND SOLE RESPONSIBILITY FOR ANY INFERENCE DRAWN OR DECISION MADE IN CONNECTION WITH THE USE OF THIS RECORDED-DATA.

OS1: None
OS2:
OS3:
OS4:
OS5:

Log correlated to Tubing Tally, provided by client dated 23-Aug-2007.

Objective: RIH a 3.65" Powercutter with 2.5" CCL and cut the 4.5" Tubing at 3441.0 m MDKB.






Secure Initiated

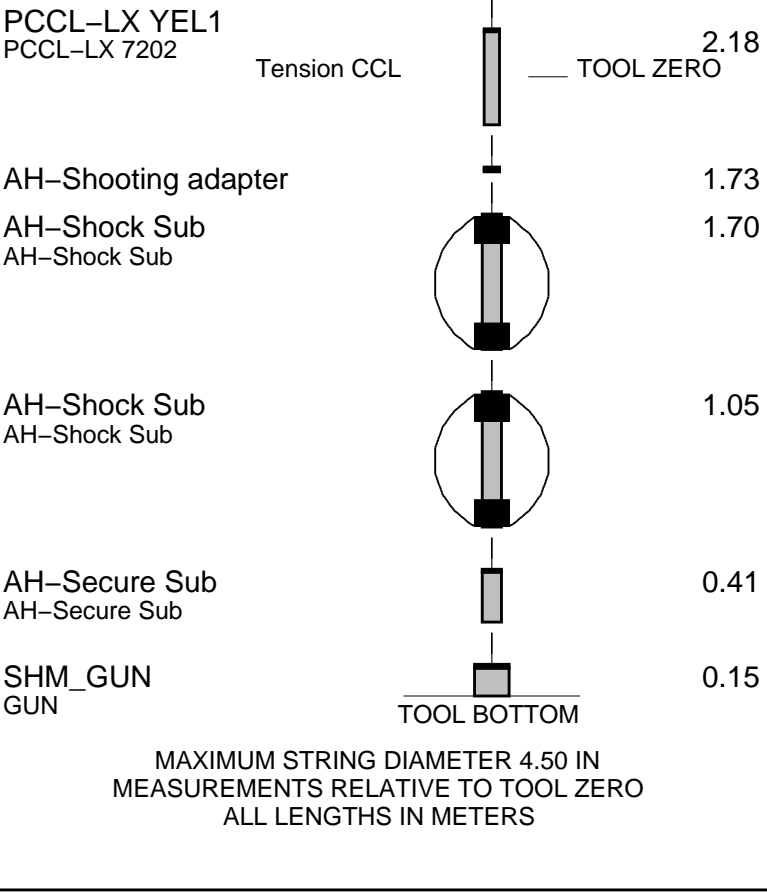
Powercutter Cutting Depth: 3441.0 m MDKB

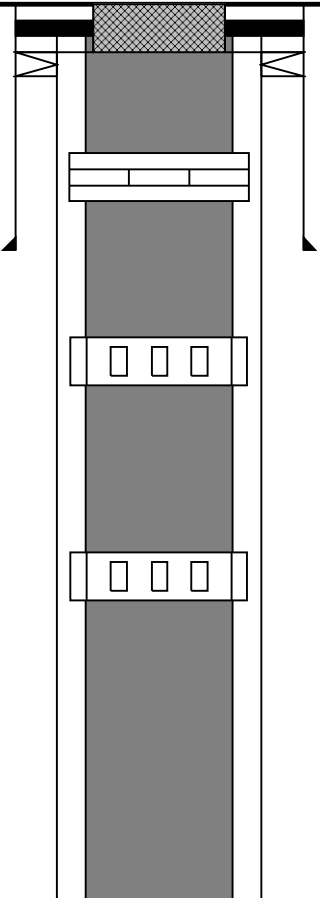
CCL to Top Shot: 1.940 m
CCL Stop Depth: 3439.06 m MDKB
Schlumberger crew:
Days : D. Stuckey & S. Kiss
Nights : B. Glover & M. Hancock

<div> <div>RUN 1</div> <div> <div>SERVICE ORDER #:</div> <div>PROGRAM VERSION:</div> <div>FLUID LEVEL:</div> </div> <div>15C0-309</div> </div>			
LOGGED INTERVAL	START	STOP	

EQUIPMENT DESCRIPTION			
RUN 1		RUN 2	

SURFACE EQUIPMENT			
SHM-EA			
DOWNHOLE EQUIPMENT			
AH-SWBS YEL1 AH-SWBS 785		6.50	
AH-SWBS YEL1 AH-SWBS 786		5.80	
AH-SWBS YEL1 AH-SWBS 787		5.11	
AH-SWHS YEL1 AH-SWHS 759		4.41	
EQF-46 YEL1 EQF-46 210		4.01	



Production String	(in) (m)			Well Schematic	(m) (in)			Casing String
	OD	ID	MD		MD	OD	ID	
Tubing Hanger	10.750	4.930	12.1					<div>Casing String</div> <div>Casing String</div> <div>Casing Shoe</div>
Tubing	5.500	4.892	12.4		11.8 12.7	7.625 10.750		
SSSV Landing Nipple	6.710	4.562	475.2					
Sliding Sleeve	6.600	4.562	1030.7		676.0	10.750		
Sliding Sleeve	6.600	4.562	1780.7					

Crossover Joint, 4–1/2" x 5–1/2"	6.180	3.938	3436.7				
Tubing, 12.75 lb/ft, J–55	4.500	3.958	3436.9				
Packer	7.625	4.500	3450.2				
Landing Nipple	5.619	3.260	3456.5				
Packer	7.625	4.500	3458.8				
Landing Nipple	4.770	2.907	3463.9				
Tubing Bottom	4.500	3.958	3464.2				
					3497.0		
					3502.0		Perforation Zone
					3542.0		Perforation Zone
					3546.0		
					3570.0		Perforation Zone
					3573.5		
					3574.5		Perforation Zone
					3576.0		
					3581.0		Perforation Zone
					3584.5		
					3585.0		Perforation Zone
					3587.0		
					3616.5		PBTD
					3638.3	7.625	Casing Shoe



Job Event Summary

MAXIS Field Log

Schlumberger Job Event Summary

	Time	Elapsed Time	Depth (M)	File	
Log Pass (down)	17-Dec-2007	2:50	001:38	424.7 – 3453.7	PERFO_012LDP
Log Pass (up)	17-Dec-2007	4:29	000:06	3453.7 – 3408.6	PERFO_013LUP
Log Pass (up)	17-Dec-2007	4:40	000:12	3460.2 – 3433.9	PERFO_014LUP
Log Pass (up)	17-Dec-2007	4:57	000:46	3433.7 – 416.4	PERFO_015LUP

Company: Esso Australia Pty Ltd

Well: CBA A6

Output DLIS Files

DEFAULT

PERFO_014LUP

FN:13

PRODUCER

17-Dec-2007 04:40 3460.2 M

3433.9 M

OP System Version: 15C0-309

MCM

SHM_GUN

15C0-309

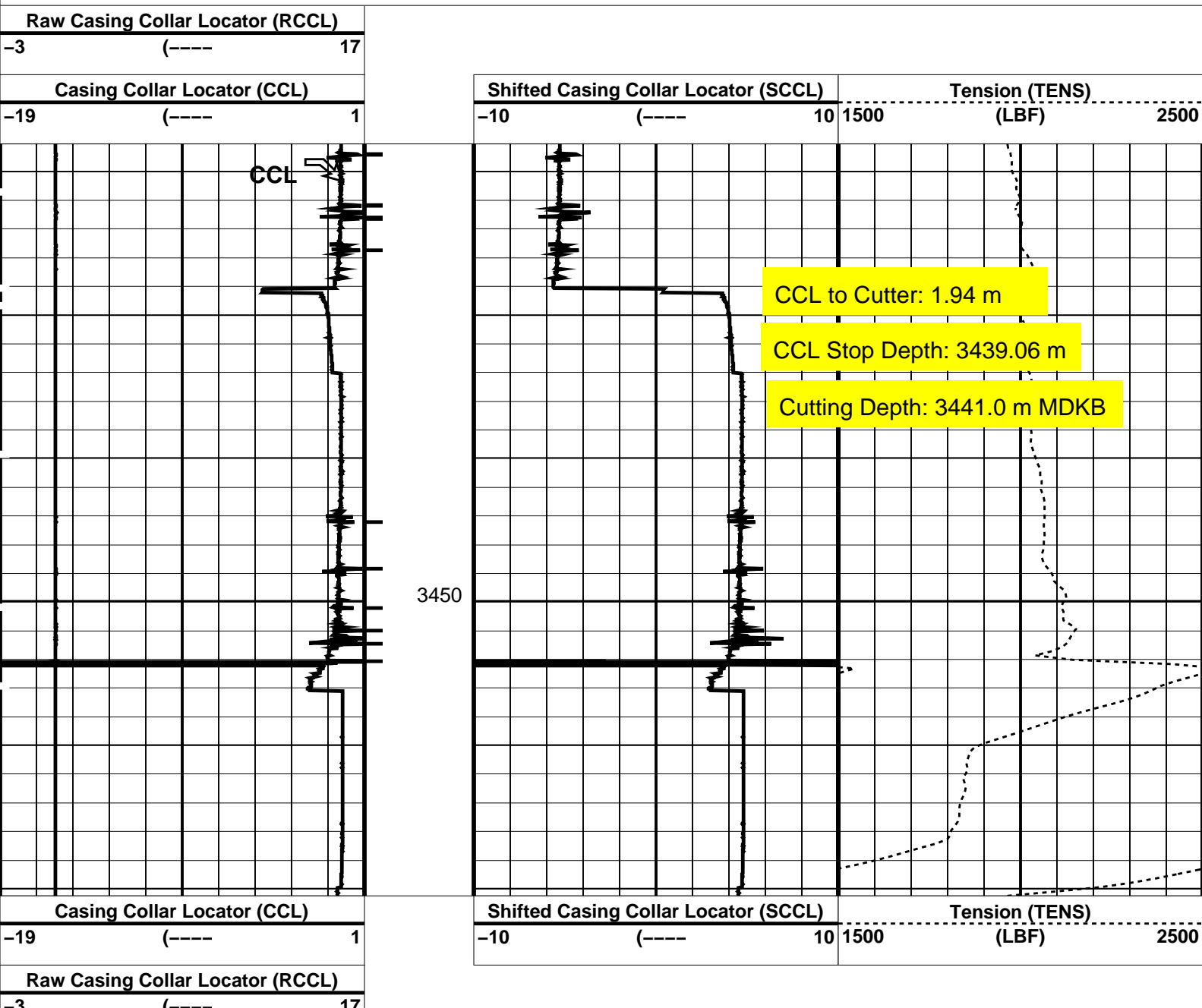
CCL-LA

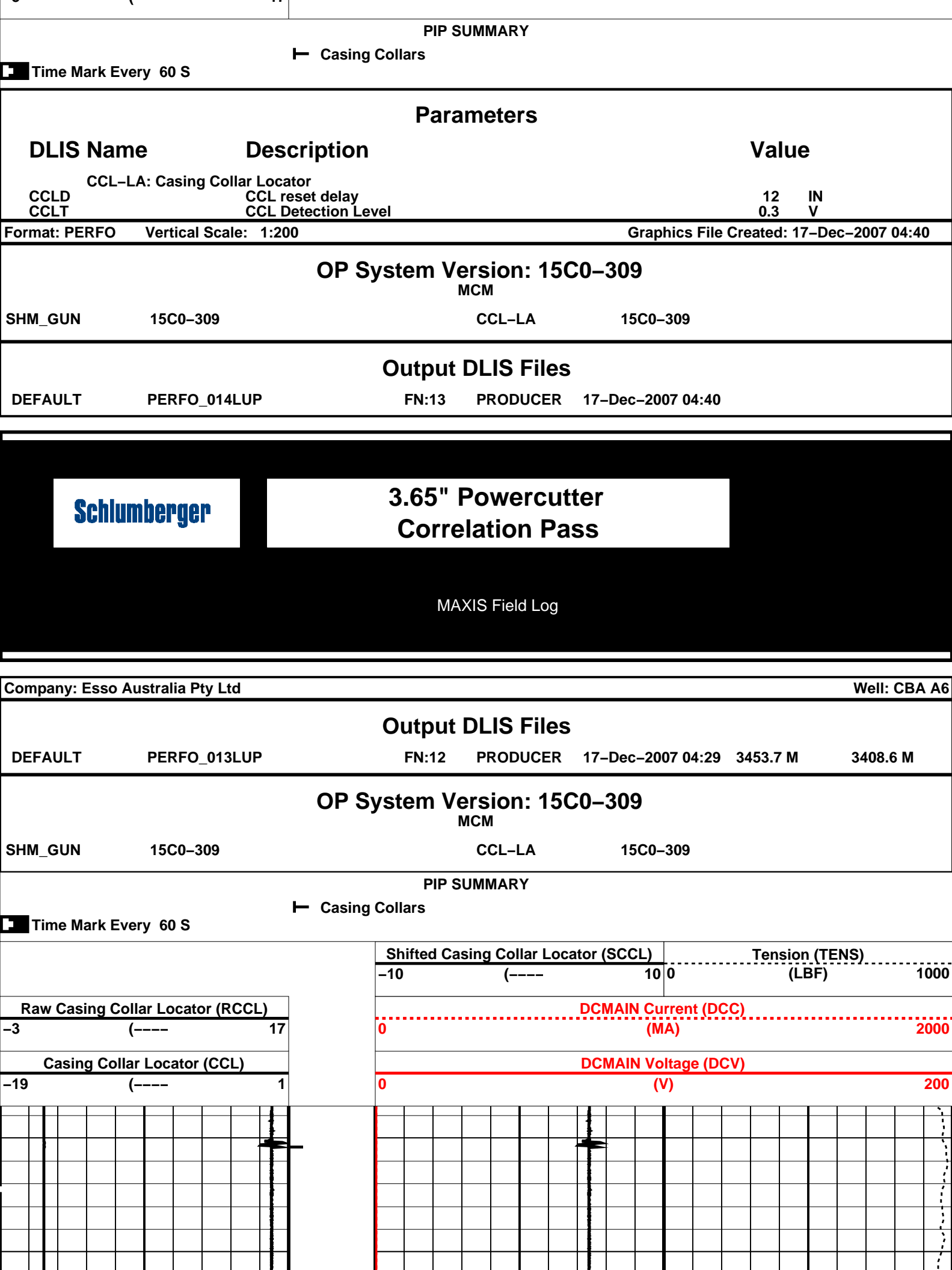
15C0-309

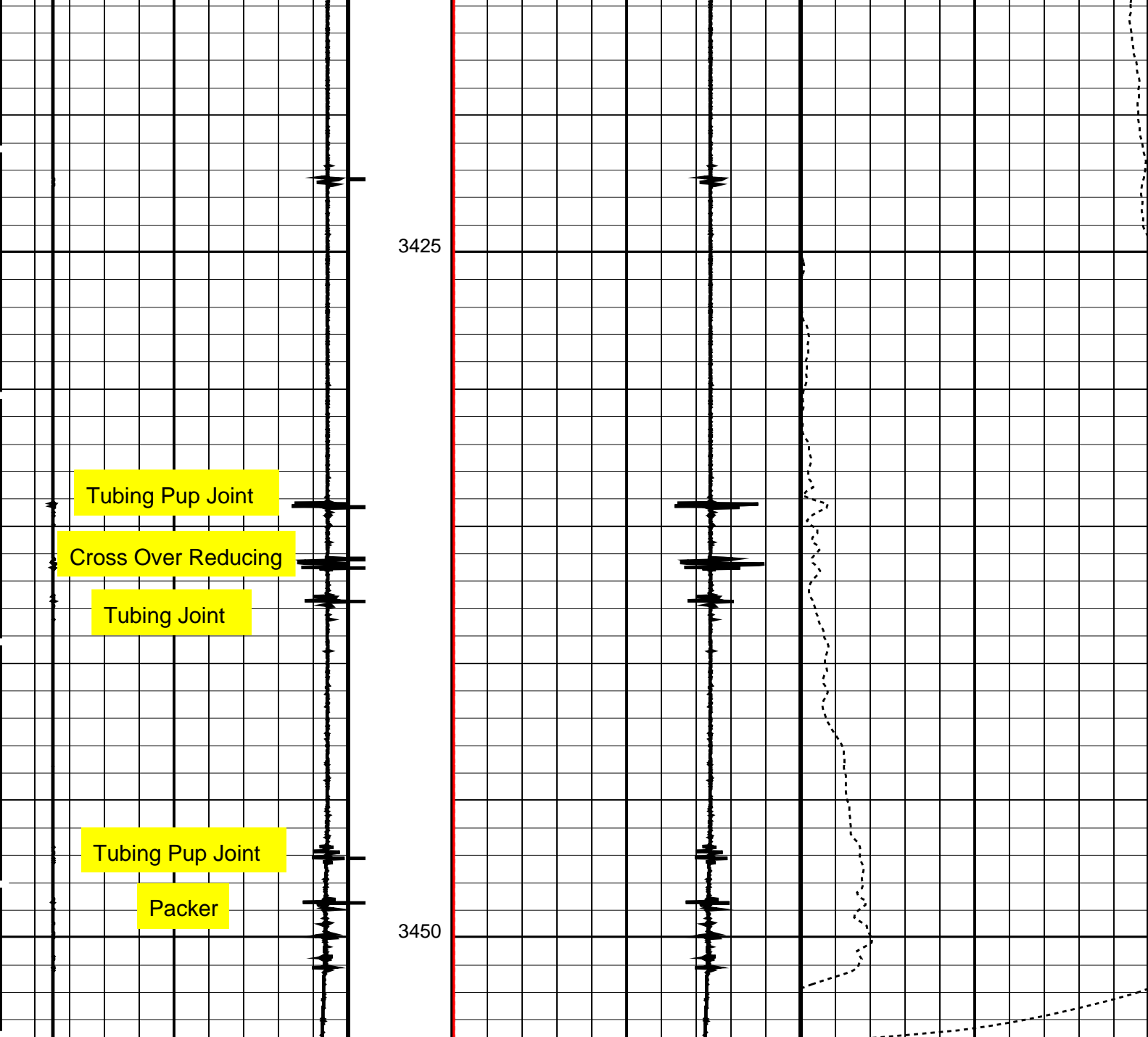
PIP SUMMARY

└─ Casing Collars

Time Mark Every 60 S







Casing Collar Locator (CCL)		DCMAIN Voltage (DCV)	
-19	(----) 1	0	(V) 200
Raw Casing Collar Locator (RCCL)		DCMAIN Current (DCC)	
-3	(----) 17	0	(MA) 2000
Shifted Casing Collar Locator (SCCL)		Tension (TENS)	
-10	(----) 10	0	(LBF) 1000

PIP SUMMARY

← Casing Collars

Time Mark Every 60 S

Parameters

DLIS Name	Description	Value
CCL-LA: Casing Collar Locator		
CCLD	CCL reset delay	12 IN
CCLT	CCL Detection Level	0.3 V

Format: PERFO Vertical Scale: 1:200

Graphics File Created: 17-Dec-2007 04:29

SHM_GUN	15C0-309	CCL-LA	15C0-309
---------	----------	--------	----------

Output DLIS Files

DEFAULT	PERFO_013LUP	FN:12	PRODUCER	17-Dec-2007 04:29
---------	--------------	-------	----------	-------------------

Company: **Esso Australia Pty Ltd**

Schlumberger

Well: **CBA A6**

Field: **Cobia**

Rig: **Rig 22**

Country: **Australia**

3.65" Powercutter
Tubing Cut Record