



Schlumberger

Company: Esso Australia Pty Ltd.

Well: A-2b

Field: Hailbout

Rig: Crane

Country: Australia

2-1/8" Phased  
Powerjet MWPT  
Perforation

Crane  
Halibut  
Gippsland  
A-2b  
Esso Australia Pty Ltd.

LOCATION		
Gippsland		Elev.: K.B. 29.45 m
Basin		G.L. -73 m
Bass Strait		D.F. 29.45 m
Permanent Datum:	M.S.L.	Elev.: 0 m above Perm. Datum
Log Measured From:	K.B.	
Drilling Measured From:	K.B.	
State: Victoria	Max. Well Deviation 56 deg	Longitude 148°19' 07.62"E
		Latitude 38°24' 20.36"S

Logging Date	12-Jan-2008		
Run Number	One		
Depth Driller	3312 m		
Schlumberger Depth	3255 m		
Bottom Log Interval	3255 m		
Top Log Interval	3190 m		
Casing Fluid Type	Production Fluid		
Salinity			
Density			
Fluid Level	1485 m		
BIT/CASING/TUBING STRING			
Bit Size	8.500 in		
From			
To			
Casing/Tubing Size	7.000 in		
Weight	26 lbm/ft		
Grade	L-80		
From	11.26 m		
To	3328.78 m		
Maximum Recorded Temperatures	225 degf		
Logger On Bottom	12-Jan-2008		16:00
Unit Number	889	Prod 4 / AUSL	
Recorded By	G Wright, R Sani		
Witnessed By	G Rimmer		

			Run 1
PVT DATA			
Oil Density			
Water Salinity			
Gas Gravity			
Bo			
Bw			
1/Bg			
Bubble Point Pressure			
Bubble Point Temperature			
Solution GOR			
Maximum Deviation	56 deg		
CEMENTING DATA			
Primary/Squeeze	Primary		
Casing String No			
Lead Cement Type			
Volume			
Density			
Water Loss			
Additives			
Tail Cement Type			
Volume			
Density			
Water Loss			
Additives			
Expected Cement Top			
Logging Date			
Run Number			
Depth Driller			
Schlumberger Depth			
Bottom Log Interval			
Top Log Interval			
Casing Fluid Type			
Salinity			
Density			
Fluid Level			
BIT/CASING/TUBING STRING			
Bit Size			
From			
To			
Casing/Tubing Size			
Weight			
Grade			
From			
To			
Maximum Recorded Temperatures			
Logger On Bottom	Time		
Unit Number	Location		
Recorded By			
Witnessed By			

## DEPTH SUMMARY LISTING

Date Created: 12-JAN-2008 10:31:44

### Depth System Equipment

Depth Measuring Device		Tension Device		Logging Cable	
Type:	IDW-EB	Type:	PSDS/OSDS	Type:	2-32ZT
Serial Number:	6273	Serial Number:	325357	Serial Number:	24425
Calibration Date:	04-Jan-2007	Calibration Date:	26-Dec-2007	Length:	5299.86 M
Calibrator Serial Number:	9	Calibrator Serial Number:	1174	Conveyance Method: Wireline Rig Type: Rigless	
Calibration Cable Type:	2-23ZT	Calibration Gain:	0.88		
Wheel Correction 1:	-2	Calibration Offset:	176.00		
Wheel Correction 2:	-4				

### Depth Control Parameters

Log Sequence:	Subsequent Trip To the Well
Reference Log Name:	ExxonMobil Petrophysical Analysis
Reference Log Date:	14-Jan-2007

### Depth Control Remarks

1. IDW used as primary depth control.
2. Z-Chart used as back-up.

#### DISCLAIMER

THE USE OF AND RELIANCE UPON THIS RECORDED-DATA BY THE HEREIN NAMED COMPANY (AND ANY OF ITS AFFILIATES, PARTNERS, REPRESENTATIVES, AGENTS, CONSULTANTS AND EMPLOYEES) IS SUBJECT TO THE TERMS AND CONDITIONS AGREED UPON BETWEEN SCHLUMBERGER AND THE COMPANY, INCLUDING: (a) RESTRICTIONS ON USE OF THE RECORDED-DATA; (b) DISCLAIMERS AND WAIVERS OF WARRANTIES AND REPRESENTATIONS REGARDING COMPANY'S USE OF AND RELIANCE UPON THE RECORDED-DATA; AND (c) CUSTOMER'S FULL AND SOLE RESPONSIBILITY FOR ANY INFERENCE DRAWN OR DECISION MADE IN CONNECTION WITH THE USE OF THIS RECORDED-DATA.

OTHER SERVICES1	
OS1:	None
OS2:	
OS3:	
OS4:	
OS5:	
REMARKS: RUN NUMBER 1	REMARKS: RUN NUMBER 2
Log correlated to ExxonMobil Composite supplied with program.	
Maximum well deviation = 56 deg at 3311m MDKB.	
2-1/8" Phased Powerjet at 6spf used for this perforation.	
Zone perforated at 3217m to 3219m MDKB.	
SBHP = 2885 psia.	
SBHT= 224 degf.	
After firing gun:	

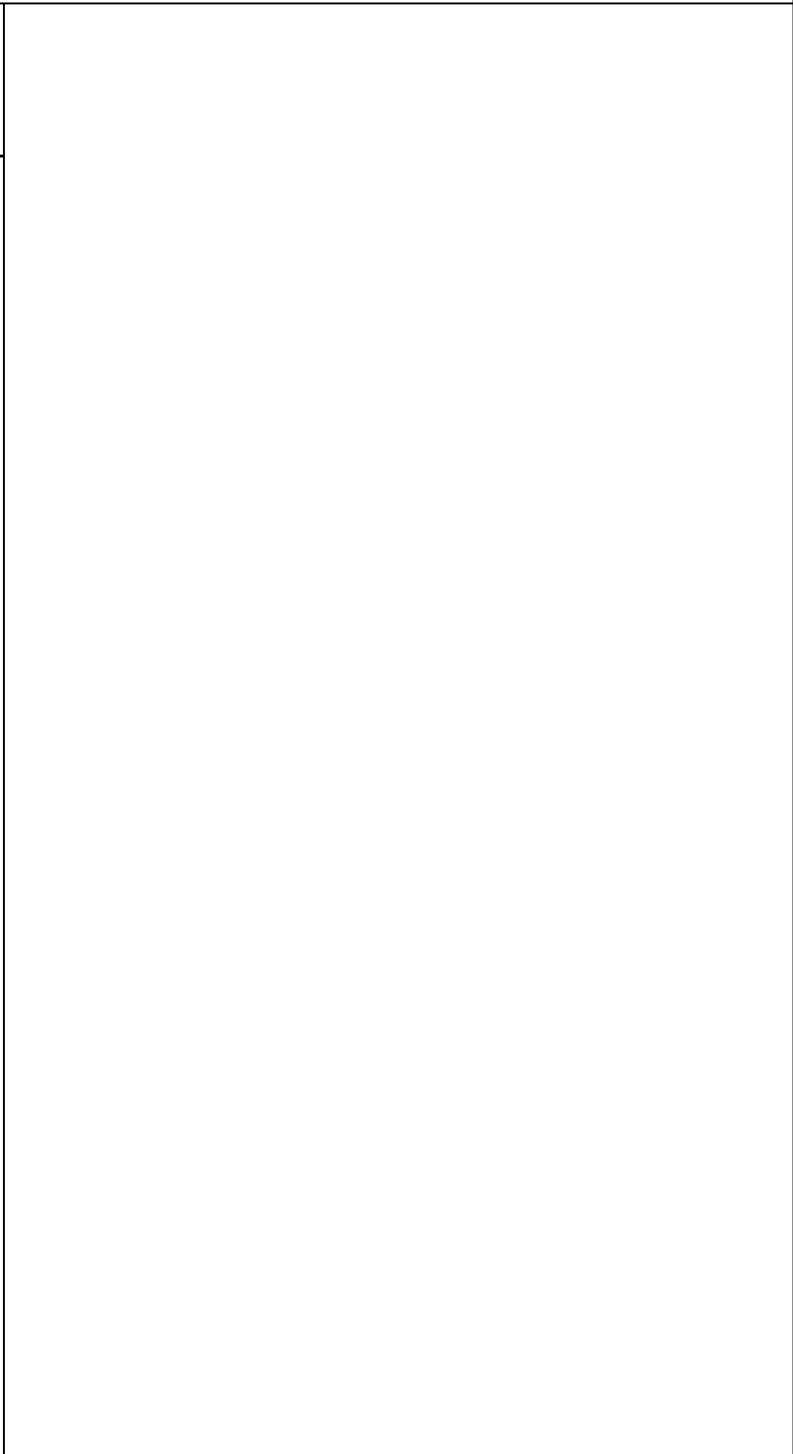
SBHP = 3201 psia.		
SBHT = 225 degf.		
Schlumberger Crew: P Lawrence, C Shiells		

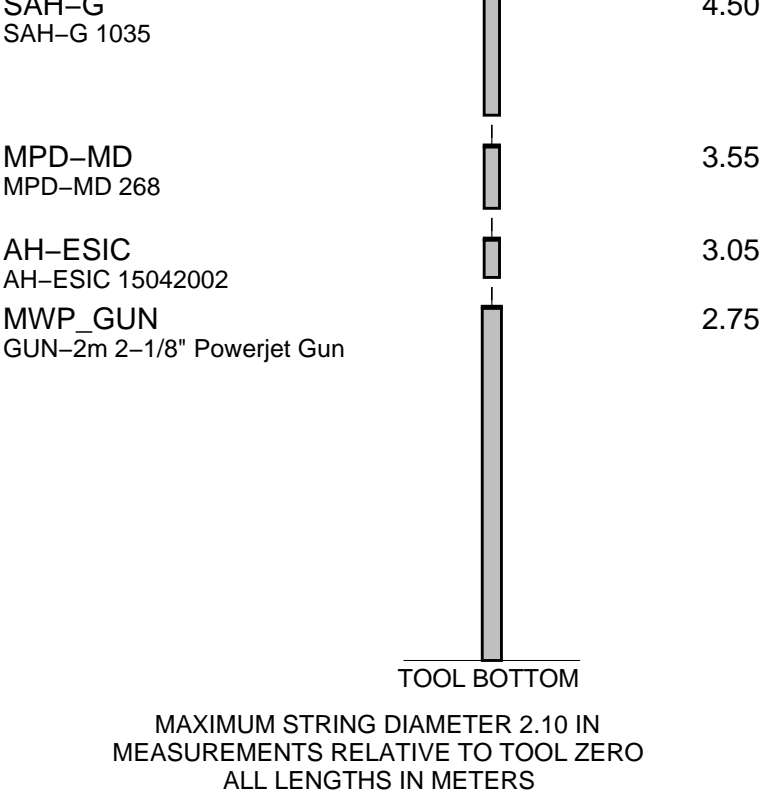
RUN 1		
SERVICE ORDER #:	AUSL 08589239	
PROGRAM VERSION:	14C0-302	
FLUID LEVEL:	1485 m	
LOGGED INTERVAL	START	STOP

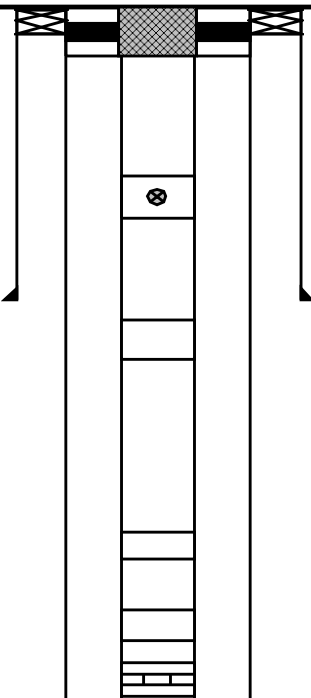
EQUIPMENT DESCRIPTION		
RUN 1		

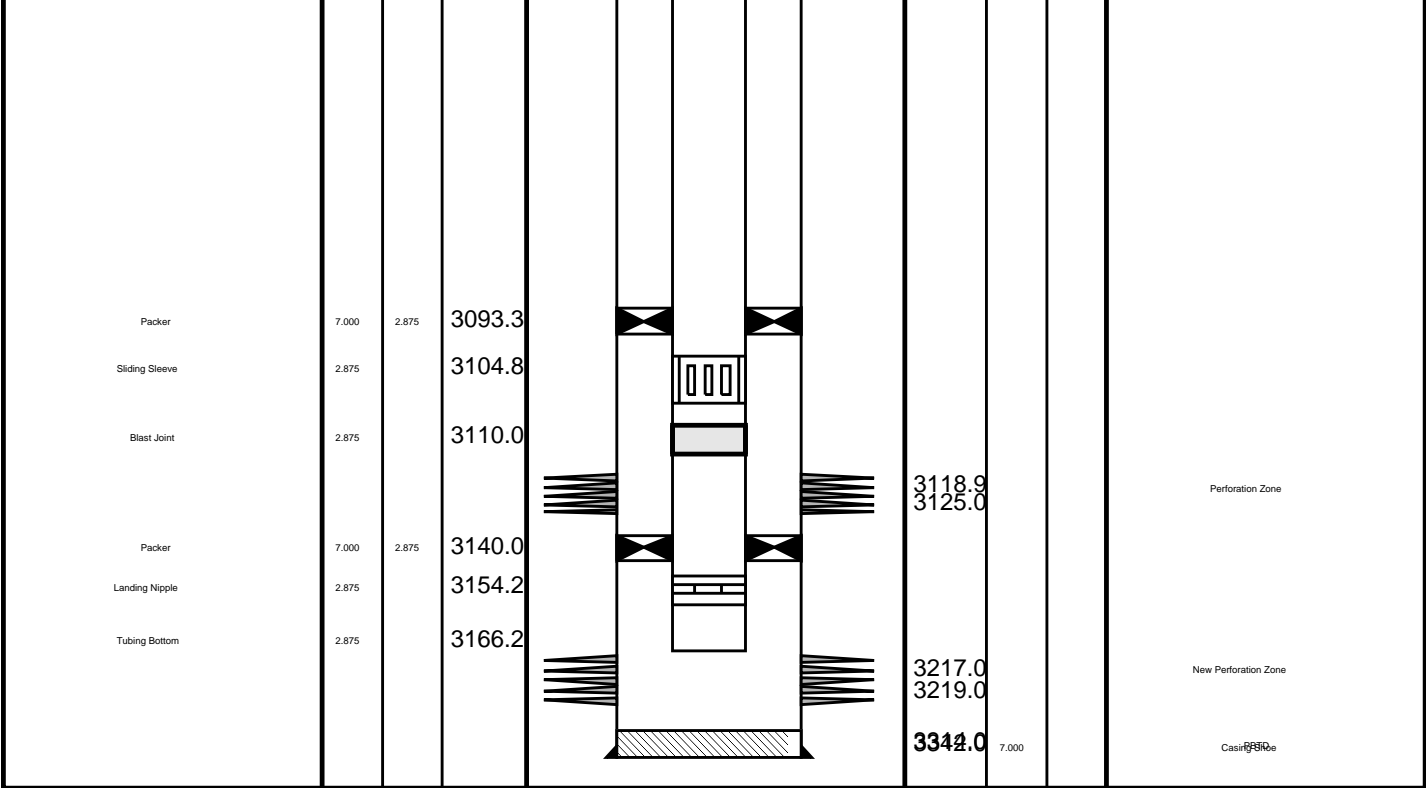
SURFACE EQUIPMENT	
MWPM-AA	

DOWNHOLE EQUIPMENT	
MH-22 MH-22	11.52
AH-38 AH-38	11.04
EQF-43 EQF-43	10.74
AH-124 7002 AH-124	8.91
MWGT-AA MWPG-AA 24029 MWGH-AA 69	8.60
MWPG GR	2.41
MWPT-CA MWPH-AA 74 MWPS-AA 74	7.62
CCL SMWP Pres SMWP Temp Tension	TOOL ZERO
AH-121 AH-121 42	4.80
SAH-121	4.50





Production String	(in)		(m)	Well Schematic	(m)	(in)		Casing String
	OD	ID	MD		MD	OD	ID	
Tubing Hanger	7.000	2.950	12.2		11.0	10.750		Casing String
Tubing	2.875		12.2		11.0	7.000	10.750	Liner Hanger
					11.3	7.000		Casing String
					11.3	10.750	7.000	Liner Hanger
SSSV	2.875		143.2					
Side Pocket Mandrel	2.875		776.2		645.7	10.750		Casing Shoe
Side Pocket Mandrel	2.875		1294.2					
Side Pocket Mandrel	2.875		1484.9					
Landing Nipple	2.875		1502.3					

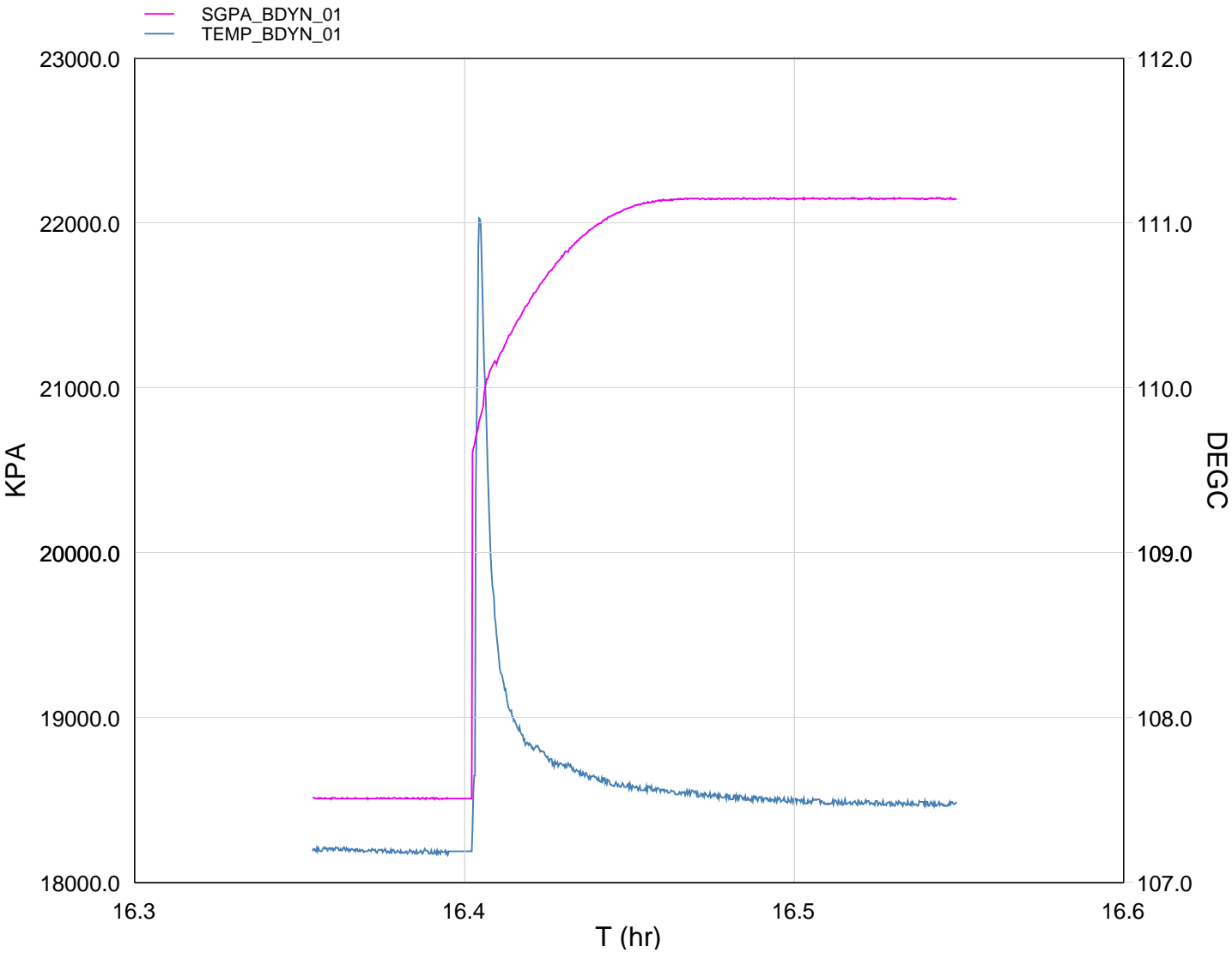


Job Event Summary

MAXIS Field Log

Schlumberger Job Event Summary

	Time	Elapsed Time	Depth (M)	File
Log Pass (down)	12-Jan-2008 15:13	000:50	795.7 – 3255.4	PERFO_006LDP
Log Pass (up)	12-Jan-2008 16:04	000:06	3255.4 – 3197.4	PERFO_007LUP
Log Pass (up)	12-Jan-2008 16:15	000:19	3253.6 – 3195.8	PERFO_009LUP
Station Log	12-Jan-2008 16:21	000:12	3213.5 – 1.8	PERFO_010LTP



TIME	DEGF	PSIA
4740.0	225.47	3211.988
4680.0	225.46	3212.485
4620.0	225.50	3212.439
4560.0	225.48	3212.927
4500.0	225.51	3212.038
4440.0	225.62	3211.672
4380.0	225.68	3199.667
4320.0	225.90	3160.761
4260.0	226.65	3086.328
4200.0	224.94	2684.690
4140.0	224.92	2684.760

4080.0 224.97 2684.977  
4020.0 224.97 2684.977

Schlumberger

## 2-1/8" Powerjet Gun Shooting Pass

MAXIS Field Log

Company: Esso Australia Pty Ltd.

Well: A-2b

### Output DLIS Files

DEFAULT PERFO\_009LUP FN:8 PRODUCER 12-Jan-2008 16:15 3253.6 M 3195.8 M

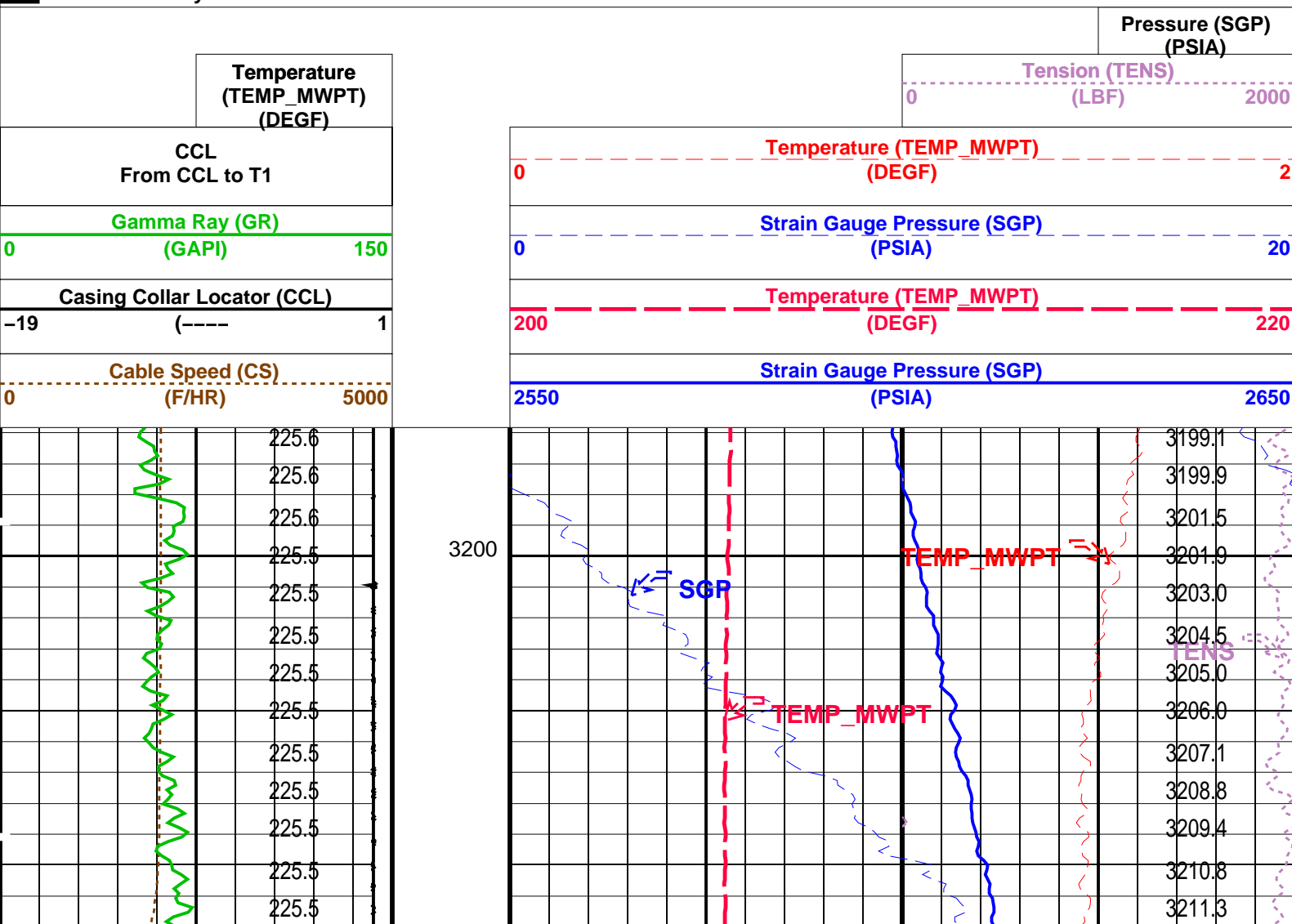
### OP System Version: 14C0-302

MCM

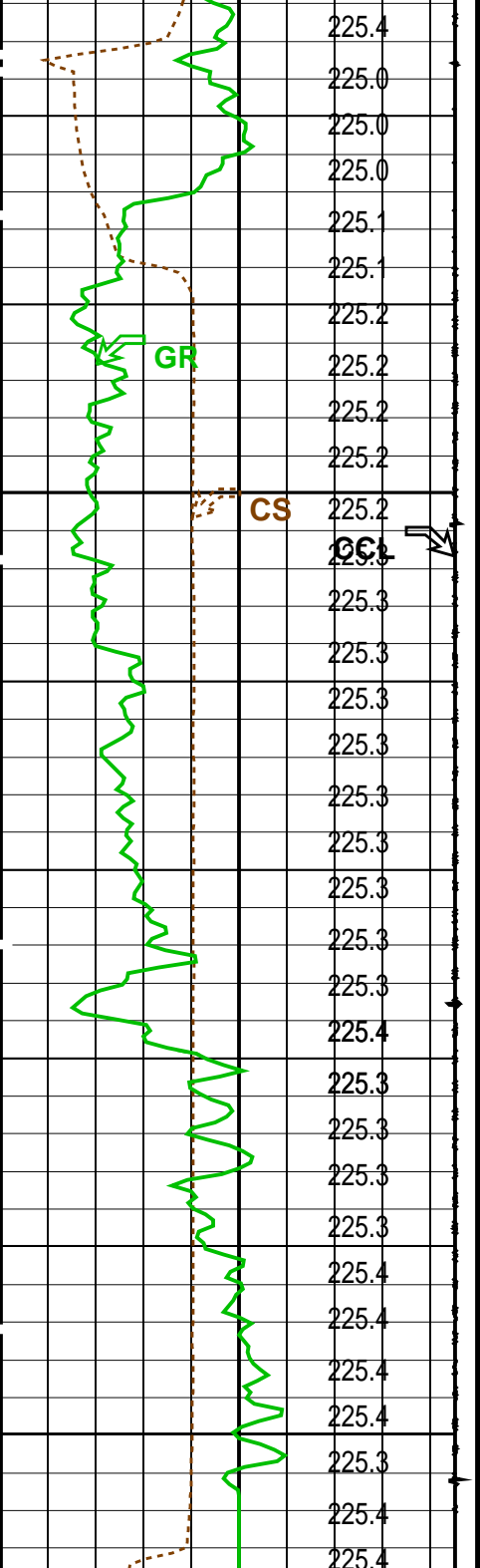
MWP\_GUN 14C0-302 MWPT-CA 14C0-302  
MWGT-AA 14C0-302

### PIP SUMMARY

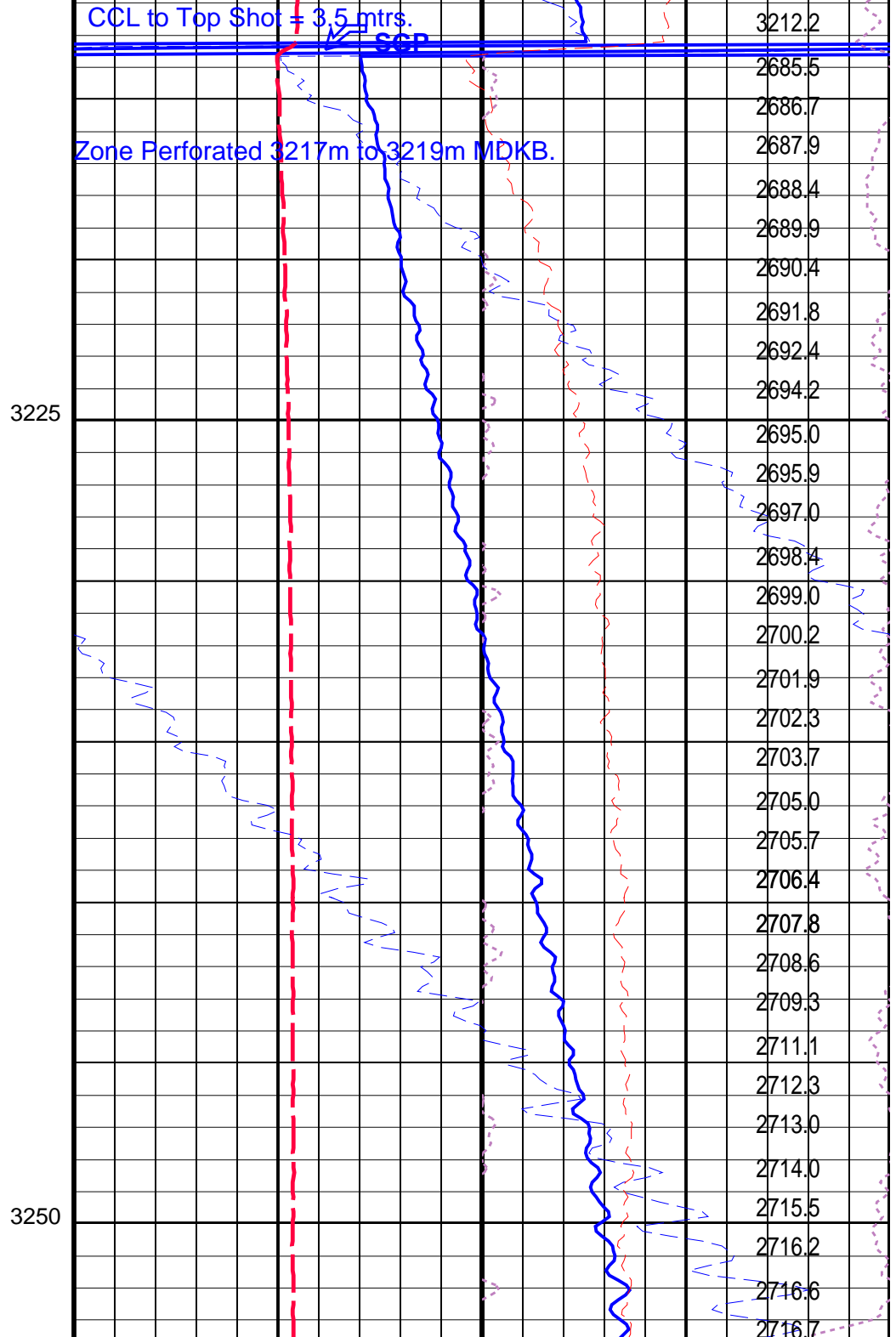
Time Mark Every 60 S







Cable Speed (CS) (F/HR)	
0	5000
Casing Collar Locator (CCL) (----	
-19	1
Gamma Ray (GR) (GAPI)	
0	150
CCL From CCL to T1	
Temperature (TEMP_MWPT) (DEGF)	



Strain Gauge Pressure (SGP) (PSIA)	
2550	2650
Temperature (TEMP_MWPT) (DEGF)	
200	220
Strain Gauge Pressure (SGP) (PSIA)	
0	20
Temperature (TEMP_MWPT) (DEGF)	
0	2
Tension (TENS) (LBF)	
0	2000
Pressure (SGP) (PSIA)	

Parameters			
DLIS Name	Description	Value	
MWPT-CA: MEASUREMENT WHILE PERFORATING TOOL			
DEVI_FL_CORR	Deviation Angle for Flow Line Correction	0	DEG
FLD	Flow Line Density	1	G/C3
MWPT_NULL_SOURCE	MWPT NULL Temperature Source	TEMS	
MWPT_NULL_TEMP	MWPT NULL Temperature	0.0	DEGC


Format: MWP

Vertical Scale: 1:200

Graphics File Created: 12-Jan-2008 16:15

OP System Version: 14C0-302			
MCM			
MWP_GUN	14C0-302	MWPT-CA	14C0-302
MWGT-AA	14C0-302		

Output DLIS Files			
DEFAULT	PERFO_009LUP	FN:8	PRODUCER 12-Jan-2008 16:15



2-1/8" Powerjet Gun  
Correlation Pass

MAXIS Field Log

Company: Esso Australia Pty Ltd.

Well: A-2b

Input DLIS Files					
DEFAULT	PERFO_007LUP	FN:6	PRODUCER	12-Jan-2008 16:04	3255.4 M 3197.4 M
Output DLIS Files					
DEFAULT	PERFO_008PUP	FN:7	PRODUCER	12-Jan-2008 16:11	3253.6 M 3196.0 M

OP System Version: 14C0-302			
MCM			
MWP_GUN	14C0-302	MWPT-CA	14C0-302
MWGT-AA	14C0-302		

