

Company: Esso Australia Pty Ltd.

Well: A-23

Field: Halibut

Rig: Crane

Country: Australia

2 1/8" Phased
Powerjet Mwpt
Perforation

Crane
Halibut
Gippsland
A-23
Esso Australia Pty Ltd.

LOCATION		
Gippsland	Basin Bass Strait	Elev.: K.B. 29.45 m
Basin		G.L. -73 m
Bass Strait		D.F. 29.45 m
Permanent Datum:	M.S.L.	Elev.: 0 m
Log Measured From:	K.B.	29.5 m above Perm. Datum
Drilling Measured From:	K.B.	

State: Victoria	Max. Well Deviation 26 deg	Longitude 148 19'07.62"E	Latitude 038 24'20.36"S
--------------------	-------------------------------	-----------------------------	----------------------------

Logging Date	7-Jan-2008		
--------------	------------	--	--

Run Number	One		
------------	-----	--	--

Depth Driller	2585 m		
---------------	--------	--	--

Schlumberger Depth	2554.5 m		
--------------------	----------	--	--

Bottom Log Interval	2554.5 m		
---------------------	----------	--	--

Top Log Interval	2553 m		
------------------	--------	--	--

Casing Fluid Type	Production Fluids		
-------------------	-------------------	--	--

Salinity			
----------	--	--	--

Density			
---------	--	--	--

Fluid Level	250 m		
-------------	-------	--	--

BIT/CASING/TUBING STRING			
--------------------------	--	--	--

Bit Size	8.500 in		
----------	----------	--	--

From			
------	--	--	--

To			
----	--	--	--

Casing/Tubing Size	7.000 in		
--------------------	----------	--	--

Weight	26 lbn/ft		
--------	-----------	--	--

Grade	L-80		
-------	------	--	--

From	13.46 m		
------	---------	--	--

To	2657 m		
----	--------	--	--

Maximum Recorded Temperatures	228 degF		
-------------------------------	----------	--	--

Logger On Bottom	7-Jan-2008	Time	11:30
------------------	------------	------	-------

Unit Number	889	Location	Prod4 / Ausl
-------------	-----	----------	--------------

Recorded By	G Wright,R Sani.		
-------------	------------------	--	--

Witnessed By	B White.		
--------------	----------	--	--

PVT DATA				Run 1			
Oil Density							
Water Salinity							
Gas Gravity							
Bo							
Bw							
1/Bg							
Bubble Point Pressure							
Bubble Point Temperature							
Solution GOR							
Maximum Deviation	26 deg						
CEMENTING DATA							
Primary/Squeeze	Primary						
Casing String No							
Lead Cement Type							
Volume							
Density							
Water Loss							
Additives							
Tail Cement Type							
Volume							
Density							
Water Loss							
Additives							
Expected Cement Top							
Logging Date							
Run Number							
Depth Driller							
Schlumberger Depth							
Bottom Log Interval							
Top Log Interval							
Casing Fluid Type							
Salinity							
Density							
Fluid Level							
BIT/CASING/TUBING STRING							
Bit Size							
From							
To							
Casing/Tubing Size							
Weight							
Grade							
From							
To							
Maximum Recorded Temperatures							
Logger On Bottom		Time					
Unit Number		Location					
Recorded By							
Witnessed By							

After firing the gun :

SBHT = 229 degf.

HPI Plug was not set due to multiple tool failures.

Crew: J Light, N Simmons, C Shiells, P Lawrence.

DOWNHOLE EQUIPMENT			DOWNHOLE EQUIPMENT		
MH-SWHS-A 754 MH-SWHS-A 754		11.67	AH-SWBS-B 761 AH-SWBS-B 761		10.29
EQF-43 EQF-43 6001		11.34			
			AH-SWBS-B 762 AH-SWBS-B 762		9.56
			AH-SWBS-B 763 AH-SWBS-B 763		8.87
EQF-43 EQF-43		9.51	AH-SWBS-B 731 AH-SWBS-B 731		8.18
MWGT-AA BLK2 MWPG-AA 24029 MWGH-AA 69		7.68	MH-SWHS-A 726 MH-SWHS-A 726	Detail MT TelStatus CTEM	7.50
	MWPG GR	2.41	PSPT-A/B 827 PSC-A 806 PSPT-B 827 PSTC 806 PBMS-B 827 CQG_F Mano 827 RTD Thermometer 827 GR 827 CCL 827 PBMS 827		7.09
MWPT-CA BLK2 MWPH-AA 74 MWPS-AA 74		6.71		GR	5.96
	CCL SMWP Pres SMWP Temp Tension	TOOL ZERO		Well_Temp CQG Manom CCL PBMS PSTC	5.03 4.93 4.80 4.57
			EQF-43 EQF-43		4.57

AH-121 41
AH-121 41

SAH-G 1035
SAH-G 1035

MPD-MB 268
MPD-MB 268

AH-ESIC
AH-ESIC 1406002

MWP_GUN
GUN-1.5 mtr Powerjet Gun 1

3.89

3.43

2.95

2.49

1.98

TOOL BOTTOM

MAXIMUM STRING DIAMETER 2.13 IN
MEASUREMENTS RELATIVE TO TOOL ZERO
ALL LENGTHS IN METERS

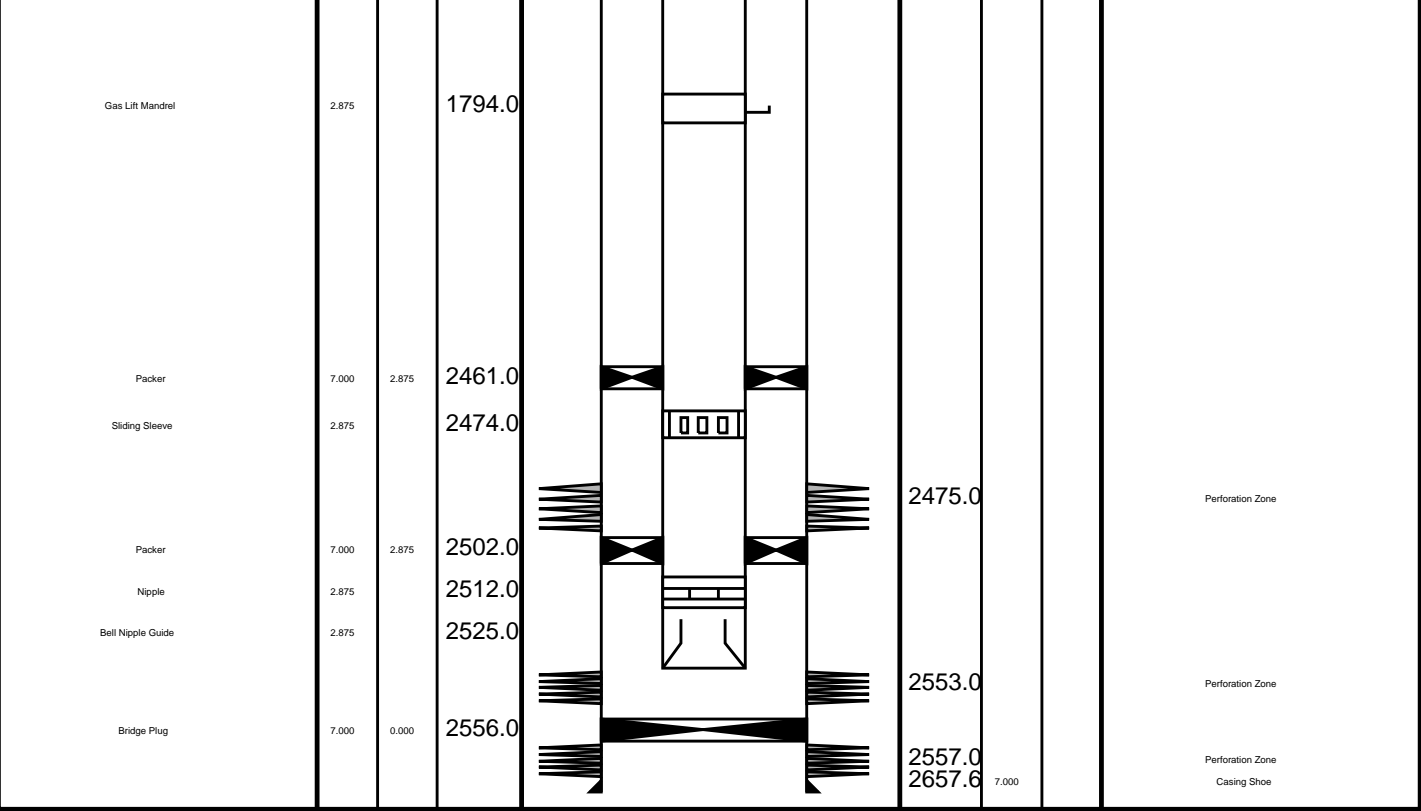
AH-2.13" Dummy Plug 1
AH-2.13" Dummy Plug 1

2.74

Tension HV
TOOL ZERO 0.00

MAXIMUM STRING DIAMETER 2.13 IN
MEASUREMENTS RELATIVE TO TOOL ZERO
ALL LENGTHS IN METERS

Production String	(in)		(m)	Well Schematic	(m)	(in)		Casing String
	OD	ID	MD		MD	OD	ID	
Tubing Hanger	7.000	2.875	10.0		13.6	9.685		Casing String
Tubing	2.875		11.3		13.5	9.625	7.000	Liner Hanger
Shutin Valve	2.875		138.0					
Gas Lift Mandrel	2.875		668.0		622.0	9.625		Casing Shoe
Gas Lift Mandrel	2.875		1047.0					
Gas Lift Mandrel	2.875		1498.0					



Job Event Summary

MAXIS Field Log

Schlumberger Job Event Summary

Time	Elapsed Time	Depth (M)	File
Simulated Log	7-Jan-2008 13:18	000:19	PERFO_031LUP
Log Pass (down)	7-Jan-2008 14:25	000:10	1125.9 - 2567.5 PERFO_033LDP
Log Pass (up)	7-Jan-2008 14:35	000:03	2567.6 - 2544.0 PERFO_034LUP
Log Pass (up)	7-Jan-2008 14:42	000:04	2565.0 - 2536.4 PERFO_035LUP
Log Pass (up)	7-Jan-2008 14:49	000:25	2562.1 - 2530.8 PERFO_036LUP
Station Log	7-Jan-2008 14:52	000:21	2549.5 - 3.1 PERFO_037LTP
Log Pass (down)	7-Jan-2008 16:15	000:23	3.4 - 2624.2 PSP_039LDP
Log Pass (up)	7-Jan-2008 16:38	000:08	2624.0 - 2496.2 PSP_040LUP



HPI Dummy Plug Pass

MAXIS Field Log

Company: Esso Australia Pty Ltd. Well: A-23

Input DLIS Files

DEFAULT PSP_040LUP FN:38 PRODUCER 07-Jan-2008 16:38 2624.0 M 2496.2 M

Output DLIS Files

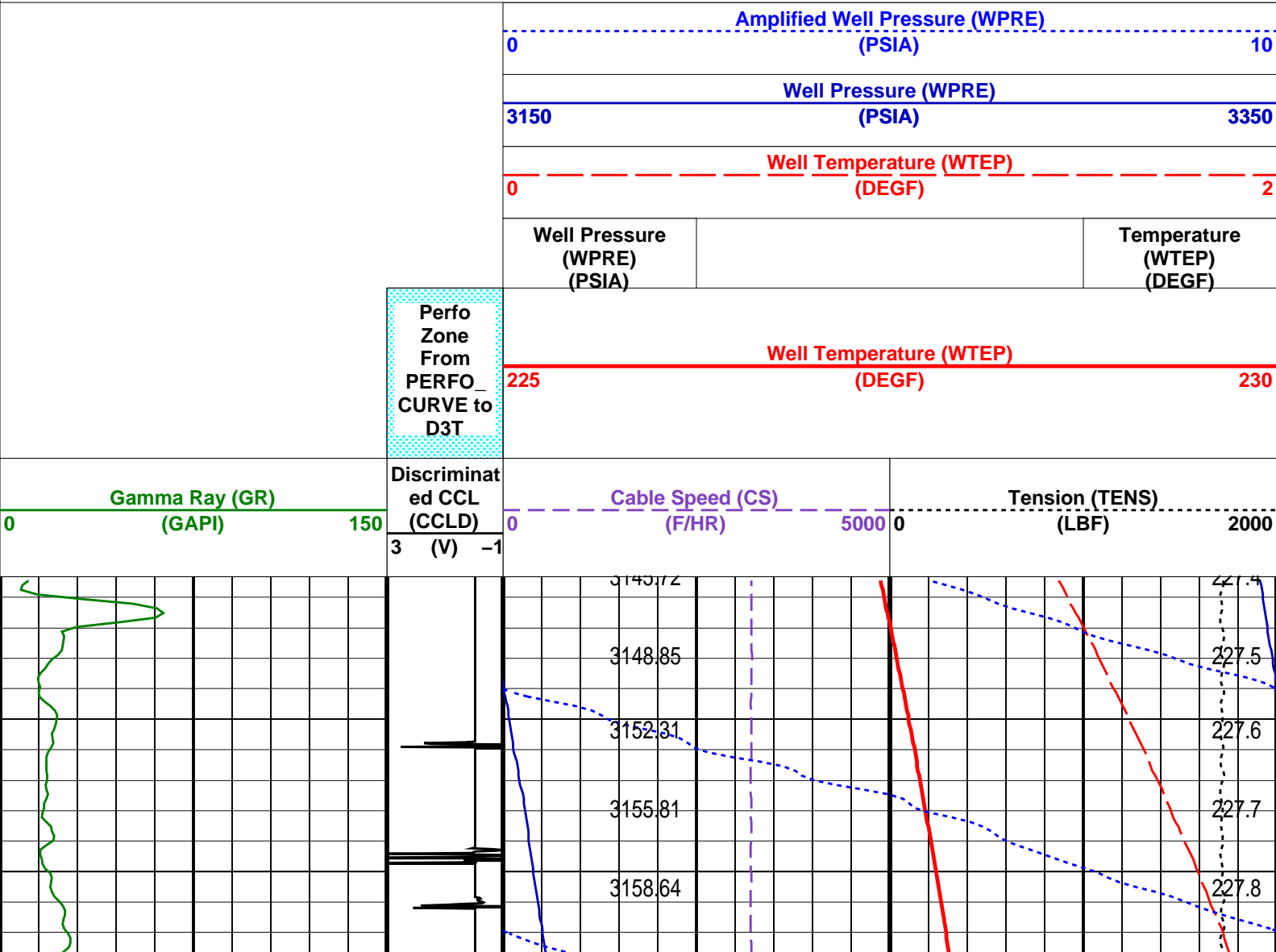
DEFAULT PSP_042PUP FN:40 PRODUCER 07-Jan-2008 16:52 2627.7 M 2500.3 M

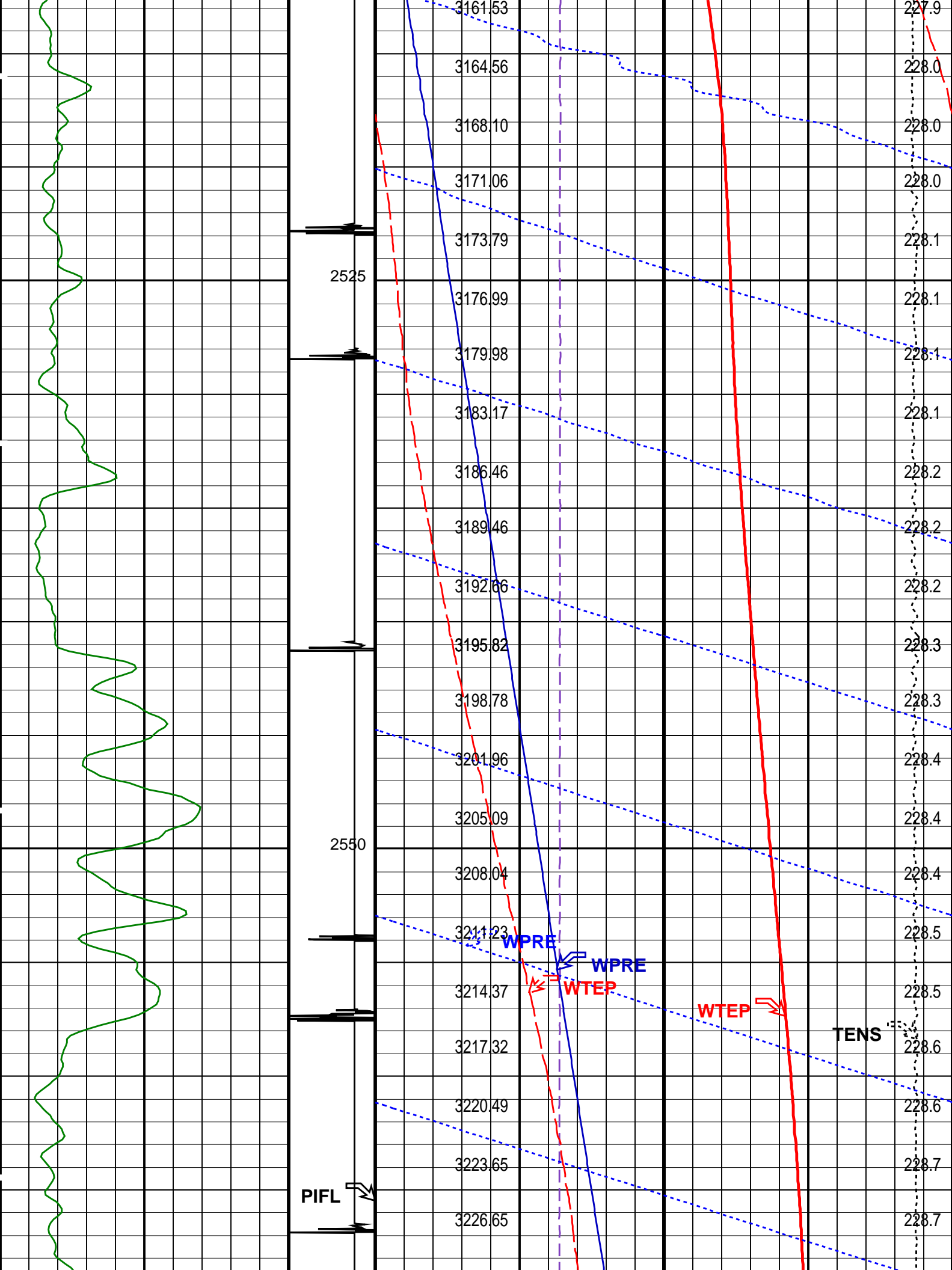
OP System Version: 14C0-302
MCM

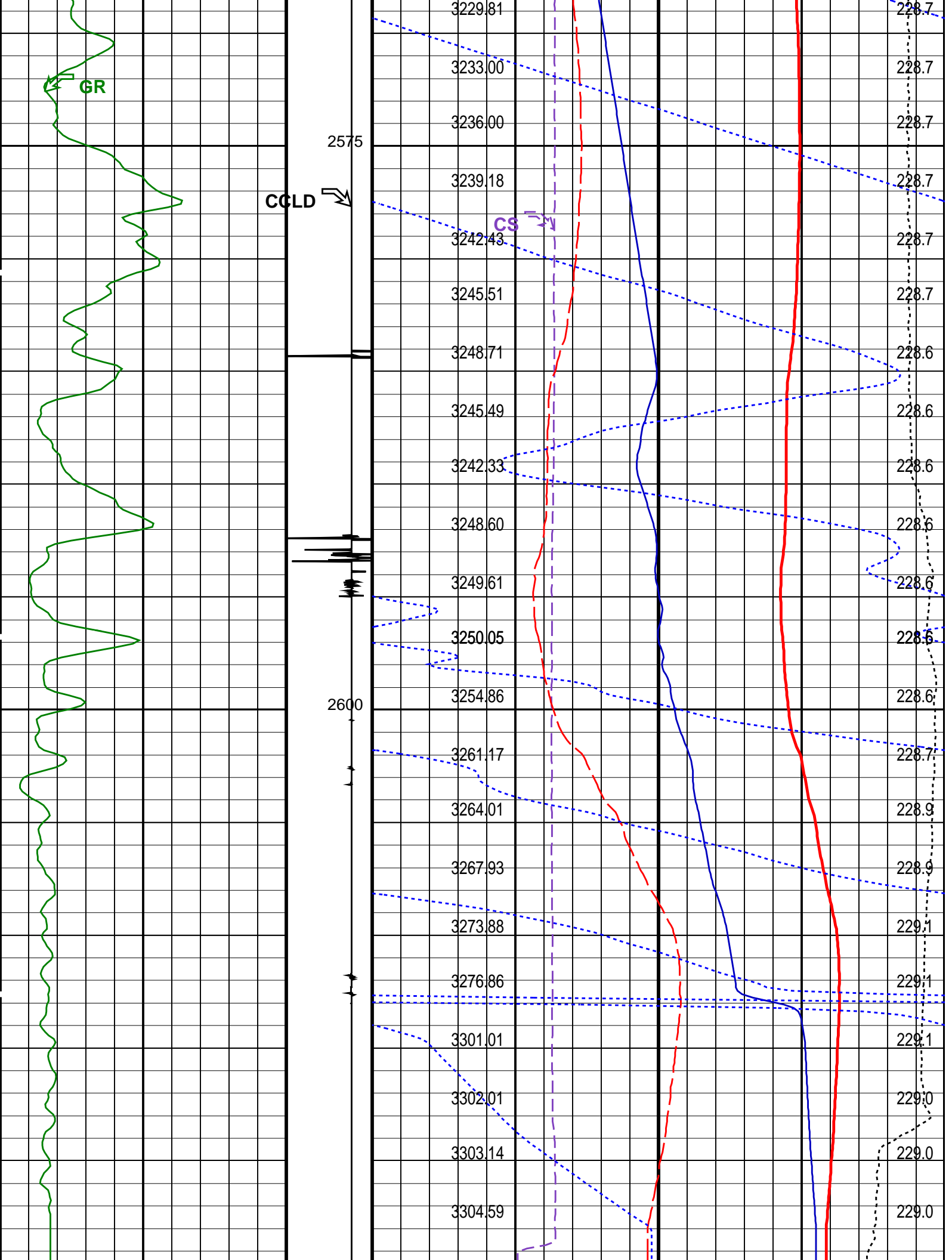
PSPT-A/B 14C0-302

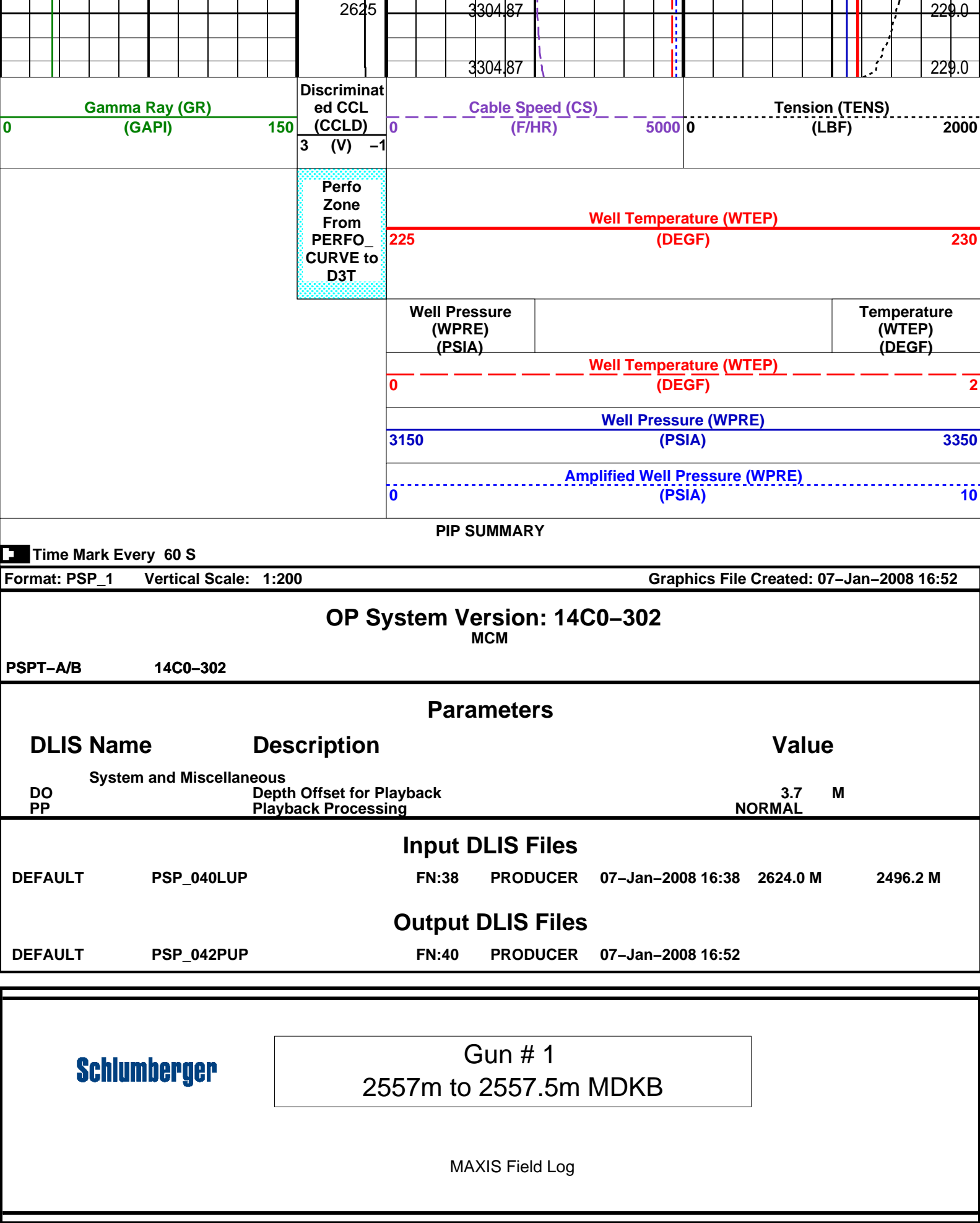
PIP SUMMARY

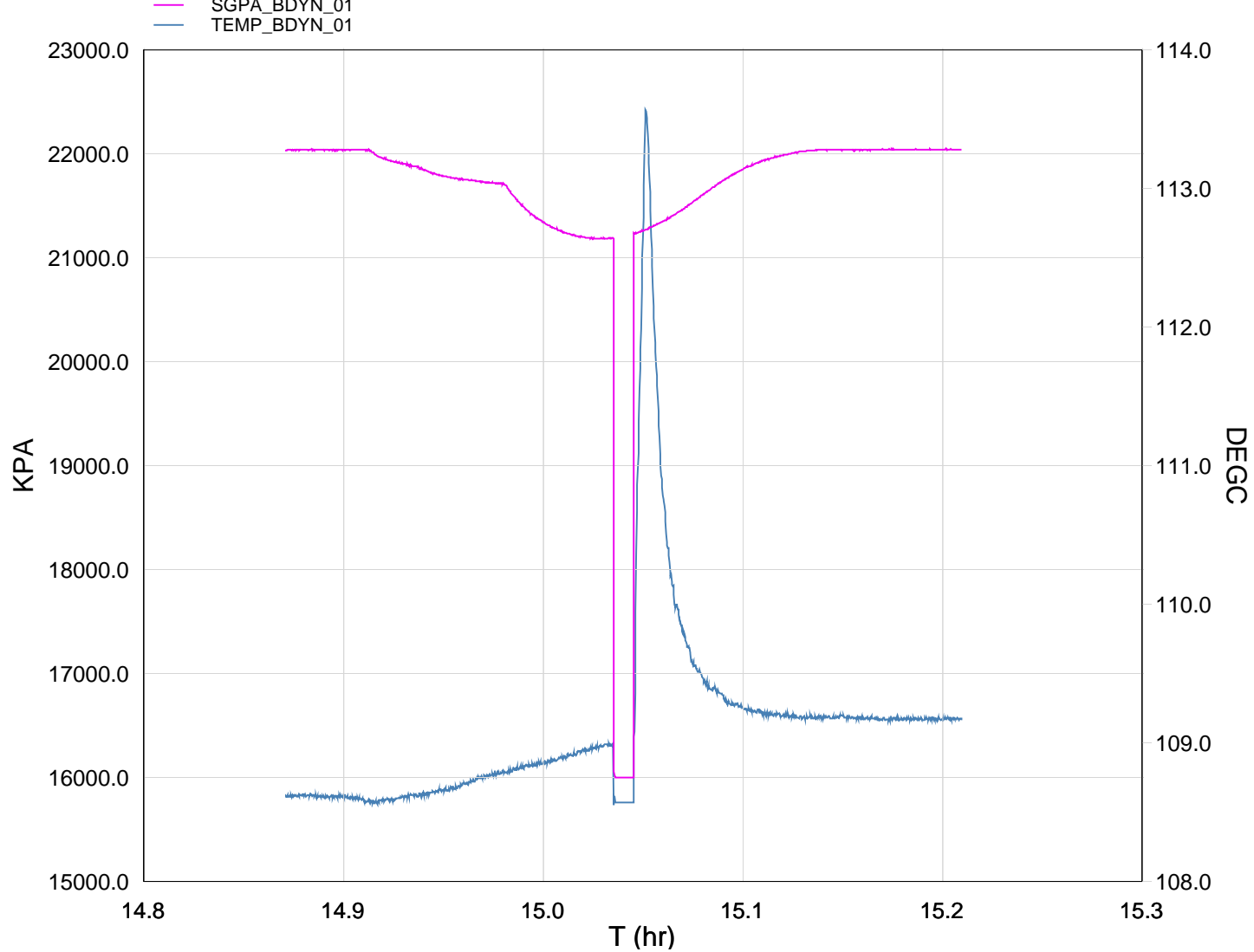
Time Mark Every 60 S











TIME	Deg F	PSIA
2880.0	228.52	3196.539
2820.0	228.52	3197.033
2760.0	228.51	3196.484
2700.0	228.52	3196.412
2640.0	228.55	3195.974
2580.0	228.55	3189.217
2520.0	228.62	3173.139
2460.0	228.85	3148.061
2400.0	229.64	3113.872
2340.0	235.23	3088.214
2280.0	227.43	2320.307
2220.0	228.10	3074.192
2160.0	227.94	3089.517
2100.0	227.86	3126.001
2040.0	227.74	3150.874
1980.0	227.61	3157.648
1920.0	227.51	3172.651
1860.0	227.46	3184.114
1800.0	227.50	3196.669
1740.0	227.51	3196.887
1680.0	227.49	3196.587

Company: Esso Australia Pty Ltd.

Well: A-23

Output DLIS Files

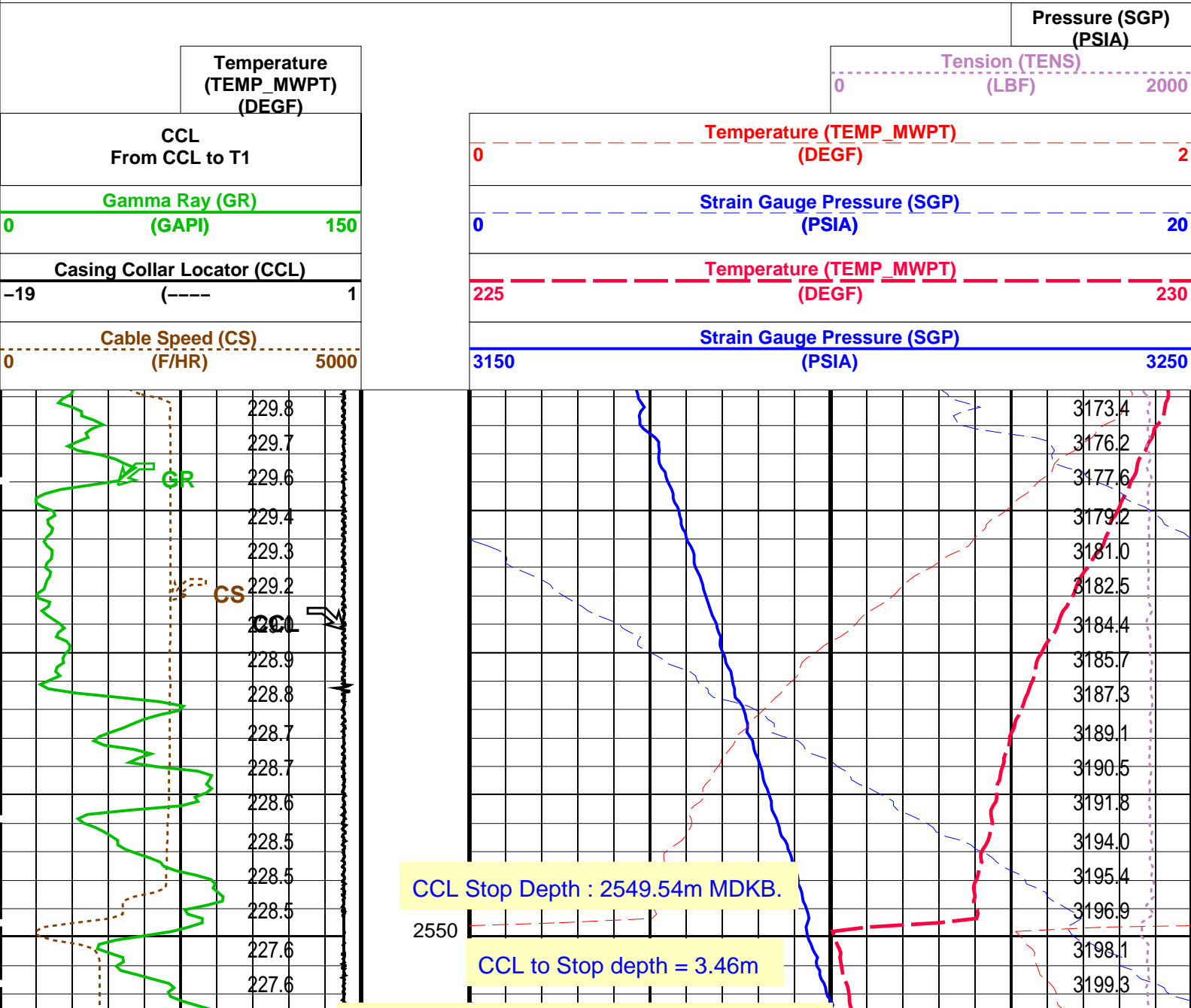
DEFAULT PERFO_036LUP FN:34 PRODUCER 07-Jan-2008 14:49 2562.1 M 2530.8 M

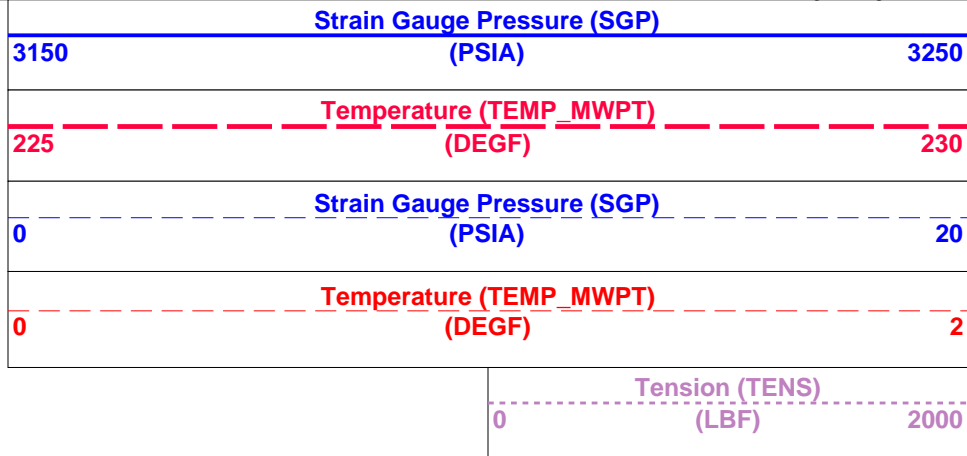
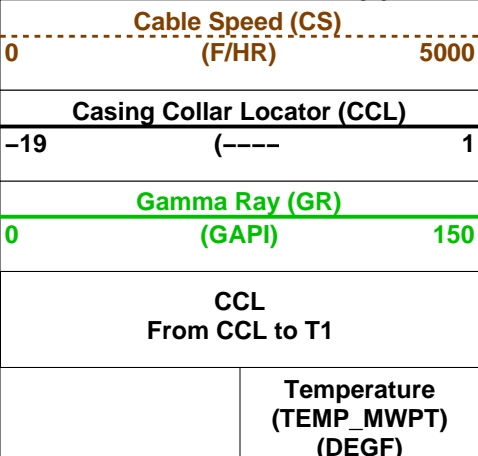
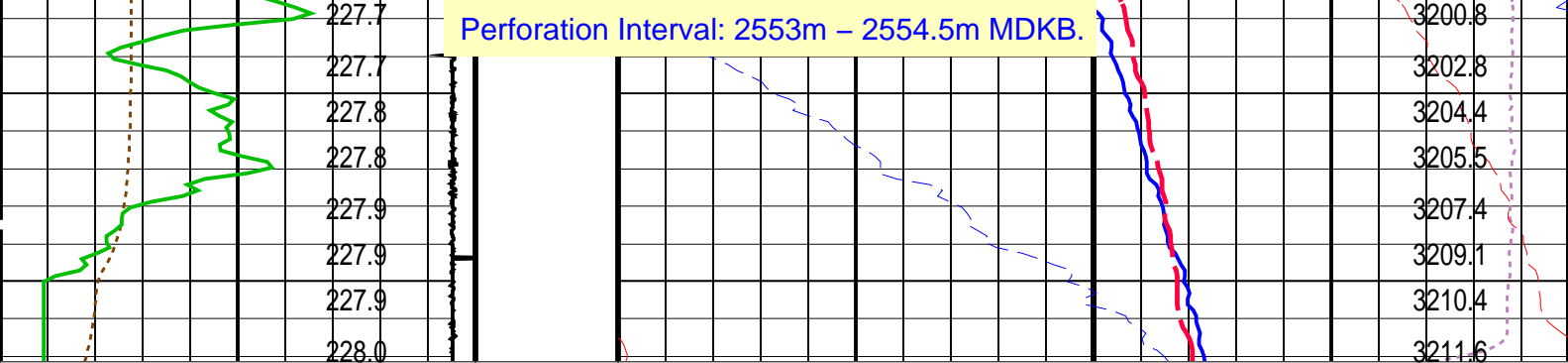
OP System Version: 14C0-302
MCM

MWP_GUN 14C0-302 MWPT-CA 14C0-302
MWGT-AA 14C0-302

PIP SUMMARY

Time Mark Every 60 S





PIP SUMMARY


Time Mark Every 60 S

Parameters			
DLIS Name	Description	Value	
MWPT-CA: MEASUREMENT WHILE PERFORATING TOOL			
DEVI_FL_CORR	Deviation Angle for Flow Line Correction	21	DEG
FLD	Flow Line Density	1	G/C3
MWPT_NULL_SOURCE	MWPT NULL Temperature Source	TEMS	
MWPT_NULL_TEMP	MWPT NULL Temperature	0.0	DEGC

Format: MWP Vertical Scale: 1:200 Graphics File Created: 07-Jan-2008 14:49

OP System Version: 14C0-302			
MCM			
MWP_GUN	14C0-302	MWPT-CA	14C0-302
MWGT-AA	14C0-302		

Output DLIS Files			
DEFAULT	PERFO_036LUP	FN:34	PRODUCER 07-Jan-2008 14:49

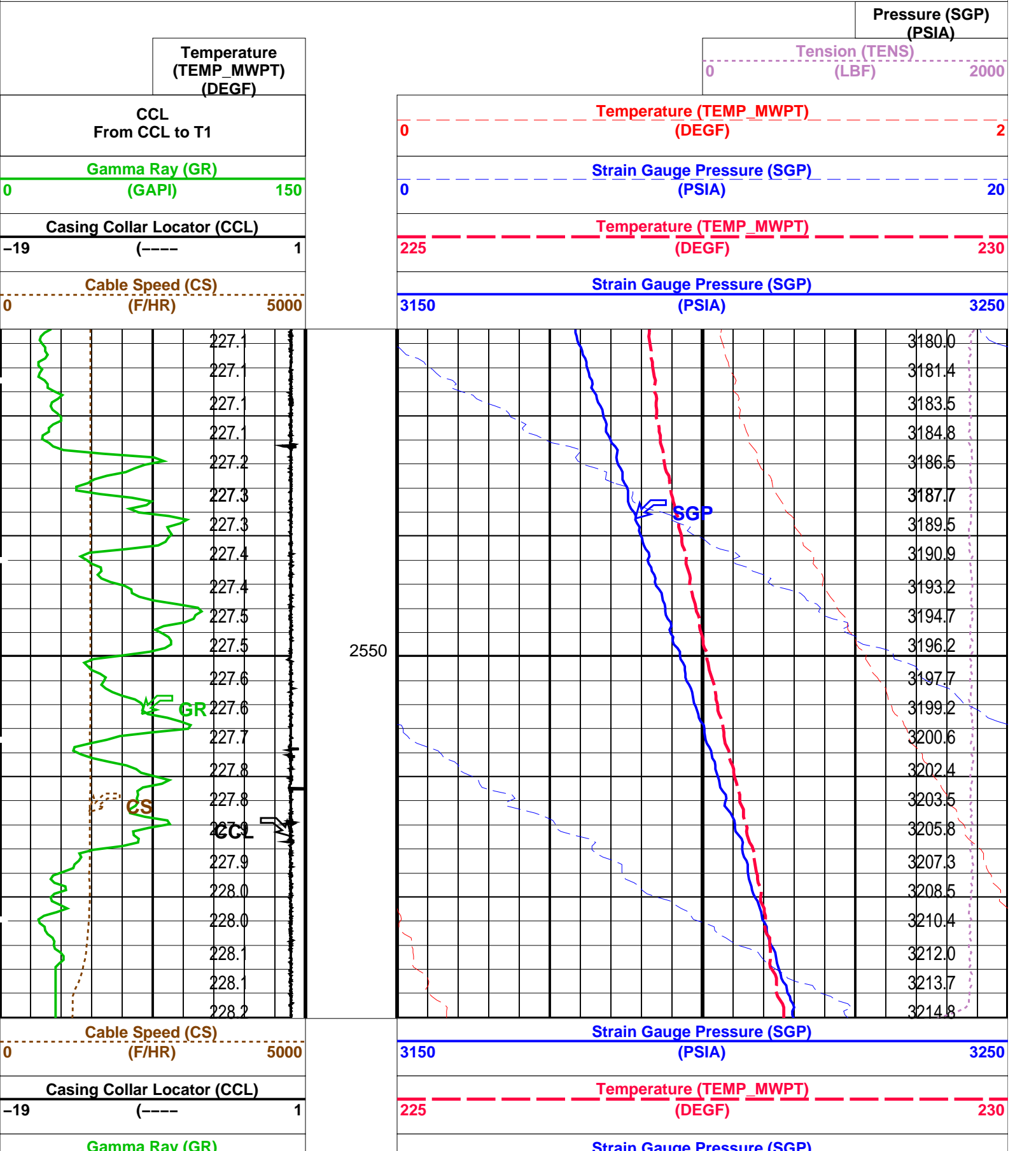


Correlation Pass

MAXIS Field Log

PIP SUMMARY

Time Mark Every 60 S



0	(GAPI)	150	0	(PSIA)	20
CCL From CCL to T1			Temperature (TEMP_MWPT) (DEGF)		
Temperature (TEMP_MWPT) (DEGF)			0	Tension (TENS) (LBF)	2000
			Pressure (SGP) (PSIA)		

PIP SUMMARY

Time Mark Every 60 S

Parameters		
DLIS Name	Description	Value
MWPT-CA: MEASUREMENT WHILE PERFORATING TOOL		
DEVI_FL_CORR	Deviation Angle for Flow Line Correction	21 DEG
FLD	Flow Line Density	1 G/C3
MWPT_NULL_SOURCE	MWPT NULL Temperature Source	TEMS
MWPT_NULL_TEMP	MWPT NULL Temperature	0.0 DEGC

Format: MWP

Vertical Scale: 1:200

Graphics File Created: 07-Jan-2008 14:42

OP System Version: 14C0-302			
MCM			
MWP_GUN	14C0-302	MWPT-CA	14C0-302
MWGT-AA	14C0-302		

Output DLIS Files			
DEFAULT	PERFO_035LUP	FN:33	PRODUCER 07-Jan-2008 14:42

Company:

Esso Australia Pty Ltd.

Schlumberger

Well:

A-23

Field:

Halibut

Rig:

Crane

Country:

Australia

2 1/8" Phased
Powerjet Mwpt
Perforation