

Company: Esso Australia Pty Ltd.

Well: FTA A4C

Field: Gippsland Basin

Platform: Fortescue

Country: Australia

MBPT 7" Plug  
Setting Record

Platform: Fortescue  
Field: Gippsland Basin  
Location: Bass Strait  
Well: FTA A4C  
Company: Esso Australia Pty Ltd.

LOCATION

Bass Strait  
Gippsland Basin  
Prod / Crane

Elev.: K.B. 42.49 m  
G.L. -76 m  
D.F. 42.49 m

Permanent Datum: \_\_\_\_\_ Mean Seal Level \_\_\_\_\_  
Log Measured From: \_\_\_\_\_ Kelly bushing \_\_\_\_\_  
Drilling Measured From: \_\_\_\_\_ Rotary Table \_\_\_\_\_

Elev.: 42.49 m  
42.5 m above Perm. Datum

State: Victoria

Max. Well Deviation  
60.7 deg

Longitude  
148°16' 36.62" E

Latitude  
38° 24' 31.39" S

Logging Date

14-Jan-2008

Run Number

1

Depth Driller

3303.6 m

Schlumberger Depth

3236.7 m Tagged

Bottom Log Interval

3223 m

Top Log Interval

3223 m

Casing Fluid Type

Production Fluids

Salinity

Density

8.55 g/cm3

Fluid Level

0 m

BIT/CASING/TUBING STRING

Bit Size

8.500 in

From

0 m

To

3252.7 m

Casing/Tubing Size

2.875 in

Weight

6.4 lbn/ft

Grade

13Cr-80

From

20.4 m

To

3146.96 m

Maximum Recorded Temperatures

108 degC

Logger On Bottom

14-Jan-2008

Time

15:00

Unit Number

3829

AUSL

Recorded By

Owen Darby

Witnessed By

Mark Calcutt

PVT DATA

Oil Density  
Water Salinity  
Gas Gravity

Bo

Bw

1/Bg

Bubble Point Pressure

Bubble Point Temperature

Solution GOR

Maximum Deviation

60.7 deg

CEMENTING DATA

Primary/Squeeze

Primary

Casing String No

Lead Cement Type

Volume

Density

Water Loss

Additives

Tail Cement Type

Volume

Density

Water Loss

Additives

Expected Cement Top

Logging Date

Run Number

Depth Driller

Schlumberger Depth

Bottom Log Interval

Top Log Interval

Casing Fluid Type

Salinity

Density

Fluid Level

BIT/CASING/TUBING STRING

Bit Size

From

To

Casing/Tubing Size

Weight

Grade

From

To

Maximum Recorded Temperatures

Logger On Bottom

Time

Unit Number

Location

Recorded By

Witnessed By

## DEPTH SUMMARY LISTING

Date Created: 15-JAN-2008 7:59:14

## Depth System Equipment

Depth Measuring Device		Tension Device		Logging Cable	
Type:	IDW-B	Type:	CMTD-B/A	Type:	2-32ZT
Serial Number:	797	Serial Number:	2268	Serial Number:	207309
Calibration Date:	4-Dec-2007	Calibration Date:	13-01-2008	Length:	6794.91 M
Calibrator Serial Number:	1009	Calibrator Serial Number:	1174		
Calibration Cable Type:	2-32ZT	Calibration Gain:	1.24	Conveyance Method:	Wireline
Wheel Correction 1:	-5	Calibration Offset:	-809.00	Rig Type:	Offshore_Fixed
Wheel Correction 2:	-2				

## Depth Control Parameters

Log Sequence:	Subsequent Trip To the Well
Reference Log Name:	FTA A4c Petrophysical Analysis
Reference Log Run Number:	N/A
Reference Log Date:	Not provided
Subsequent Trip Down Log Correction:	-2.00 M

### Depth Control Remarks

1. Correlated to FTA Petrophysical analysis log provided by client
2. Used IDW as primary depth control
3. Used Z-Chart as secondary depth control
- 4.
- 5.
- 6.

## DISCLAIMER

THE USE OF AND RELIANCE UPON THIS RECORDED-DATA BY THE HEREIN NAMED COMPANY (AND ANY OF ITS AFFILIATES, PARTNERS, REPRESENTATIVES, AGENTS, CONSULTANTS AND EMPLOYEES) IS SUBJECT TO THE TERMS AND CONDITIONS AGREED UPON BETWEEN SCHLUMBERGER AND THE COMPANY, INCLUDING: (a) RESTRICTIONS ON USE OF THE RECORDED-DATA; (b) DISCLAIMERS AND WAIVERS OF WARRANTIES AND REPRESENTATIONS REGARDING COMPANY'S USE OF AND RELIANCE UPON THE RECORDED-DATA; AND (c) CUSTOMER'S FULL AND SOLE RESPONSIBILITY FOR ANY INFERENCE DRAWN OR DECISION MADE IN CONNECTION WITH THE USE OF THIS RECORDED-DATA.

OTHER SERVICES1	OTHER SERVICES2
OS1:     Dump bailers	OS1:
OS2:	OS2:
OS3:	OS3:
OS4:	OS4:
OS5:	OS5:
REMARKS: RUN NUMBER 1	REMARKS: RUN NUMBER 2
Correlated to petrophysical analysis log provided by client.	
Objective:	
–Make up dummy plug MPBT toolstring, RIH to HUD and ensure plug access to	
the required setting depth, POOH, make up MPBT toolstring with a plug	
Suited to 7" casing, 26 lbs/ft. RIH with plug and set with the top sealing	

Note: Two run's of cement had to be made to dump approximately 1.0m of cement on the MPBT plug because of the volume restrictions in the 1 11/16" dump bailers available.

Specialist = Owen Darby

RUN 1 SERVICE ORDER #: PROGRAM VERSION: 15C0-309 FLUID LEVEL: 0 m			RUN 2 SERVICE ORDER #: PROGRAM VERSION: FLUID LEVEL:		
LOGGED INTERVAL	START	STOP	LOGGED INTERVAL	START	STOP

RUN 2

<p> <b>ROW 1</b>  <b>SURFACE EQUIPMENT</b>          MWPM-AA       </p>		<p> <b>ROW 2</b>  <b>SURFACE EQUIPMENT</b>          MPBM       </p>	
--	--	---	--

DOWNHOLE EQUIPMENT		DOWNHOLE EQUIPMENT	
MH-22 MH-22	7.36	MH-32 MH-32	10.96
AH-124 AH-124 9901	6.88	CCL-L 9851 CCL-L	10.47
MWGT-AA MWPG-AA 24 MWGH-AA 19	6.70	MPSU-CA 1102 MPSU-CA	10.02
MWPG GR	2.41		
MWPT-CA MWPH-AA 90 MWPS-AA	5.72		
CCL SMWP Pres SMWP Temp Tension	TOOL ZERO	CCL Tachometer Cable Cur Head Volt Tension	TOOL ZERO

AH-2 1/8" Dummy Plug  
AH-2 1/8" Dummy Plug

2.90

MPEX-CA  
MPEX-CA

3.61

TOOL BOTTOM

MAXIMUM STRING DIAMETER 2.13 IN  
MEASUREMENTS RELATIVE TO TOOL ZERO  
ALL LENGTHS IN METERS

TOOL BOTTOM

MAXIMUM STRING DIAMETER 2.63 IN  
MEASUREMENTS RELATIVE TO TOOL ZERO  
ALL LENGTHS IN METERS

Client: Esso Australia Pty Ltd

Well: FTA A4c

Field: Bass Strait

State: Victoria


CountryAustralia

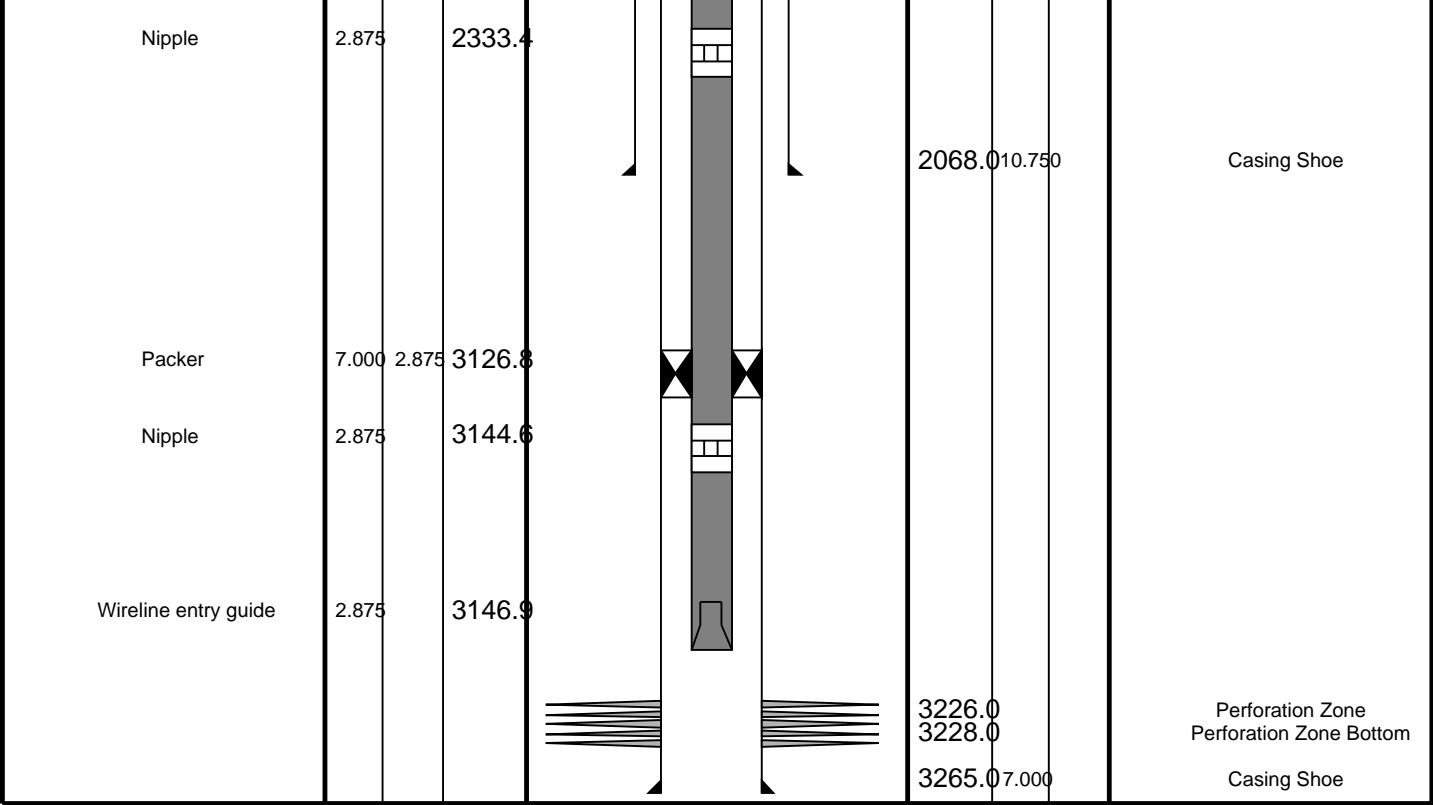
Rig Name: Fortescue

Reference Datum: Mean Sea Level

Elevation: 42.5 m

Drawing Date: 1/17/2008

Production String	(in)		(m)	Well Schematic	(m)	(in)		Casing String
	OD	ID	MD		MD	OD	ID	
Tubing	2.875		0.0		22.0	20.000		Casing String
						10.750		Casing String
					190.0	20.000		Casing Shoe
SSSV	2.875		431.2					
Gas Lift Mandrel	2.875		699.3					
Gas Lift Mandrel	2.875		1656.8					
Gas Lift Mandrel	2.875		2317.6					



# Job Event Summary

MAXIS Field Log

## Schlumberger Job Event Summary

Time	Elapsed Time	Depth (M)	File
Simulated Log	14-Jan-2008 13:06	000:34	PERFO_006LUP
OP Checked MWPT toolstring			
Rig Up Started	14-Jan-2008 13:15		
Rig up for dummy run			
Log Pass (down)	14-Jan-2008 13:47	001:09	-1.2 - 3235.9 PERFO_009LDP
RIH dummy run			
Log Pass (up)	14-Jan-2008 15:03	000:12	3242.0 - 3091.0 PERFO_013LUP
Correlation pass dummy run			
Simulated Log	15-Jan-2008 6:34	000:05	CCL_024LUP
OP Checked MPBT toolstring			
Rig Up Started	15-Jan-2008 6:55		
Rig up for MPBT			
Log Pass (down)	15-Jan-2008 7:10	001:23	-1.1 - 3219.9 CCL_025LDP
RIH with MPBT			
Log Pass (up)	15-Jan-2008 9:04	000:08	3220.1 - 3116.4 CCL_033LUP



Landing nipple

WEG

3150

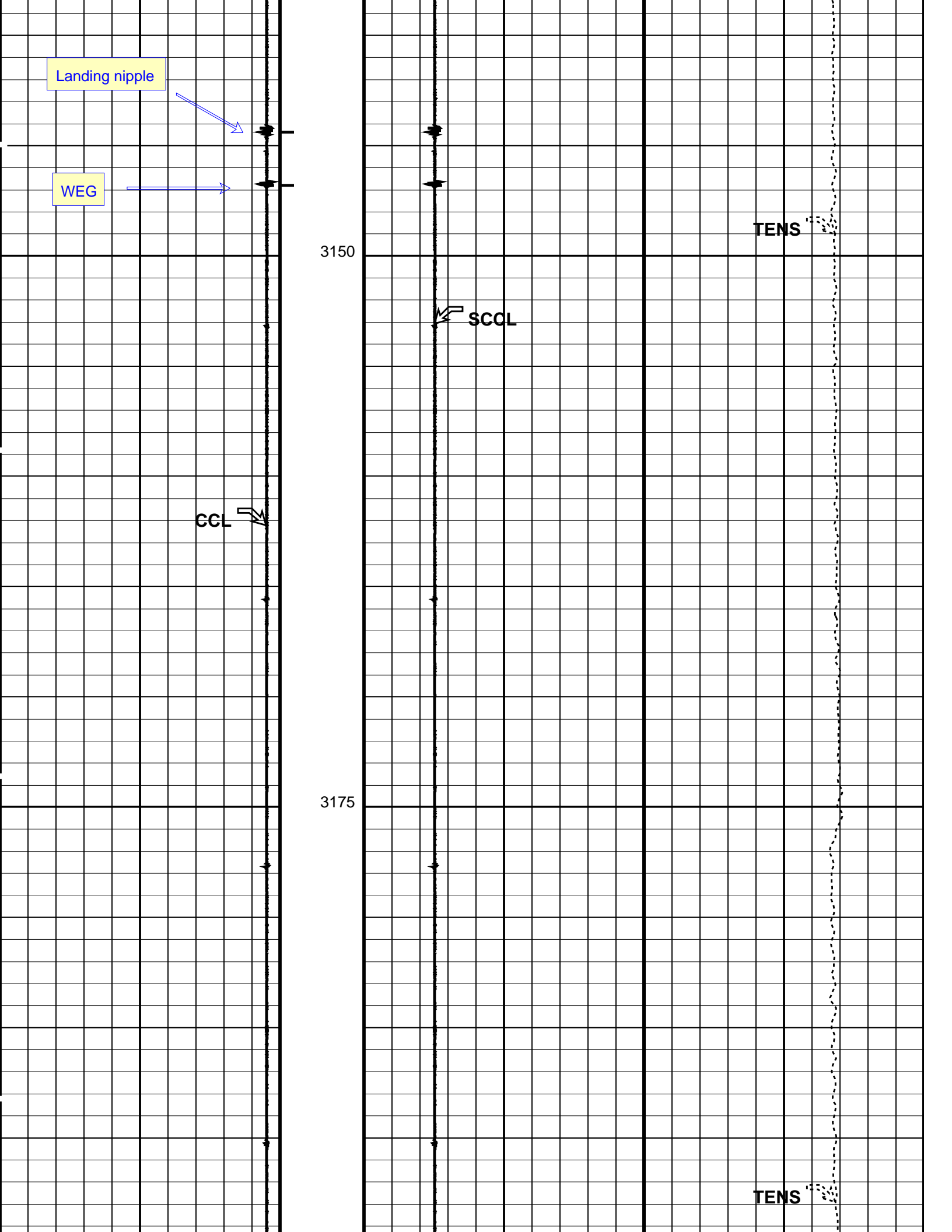
TENS

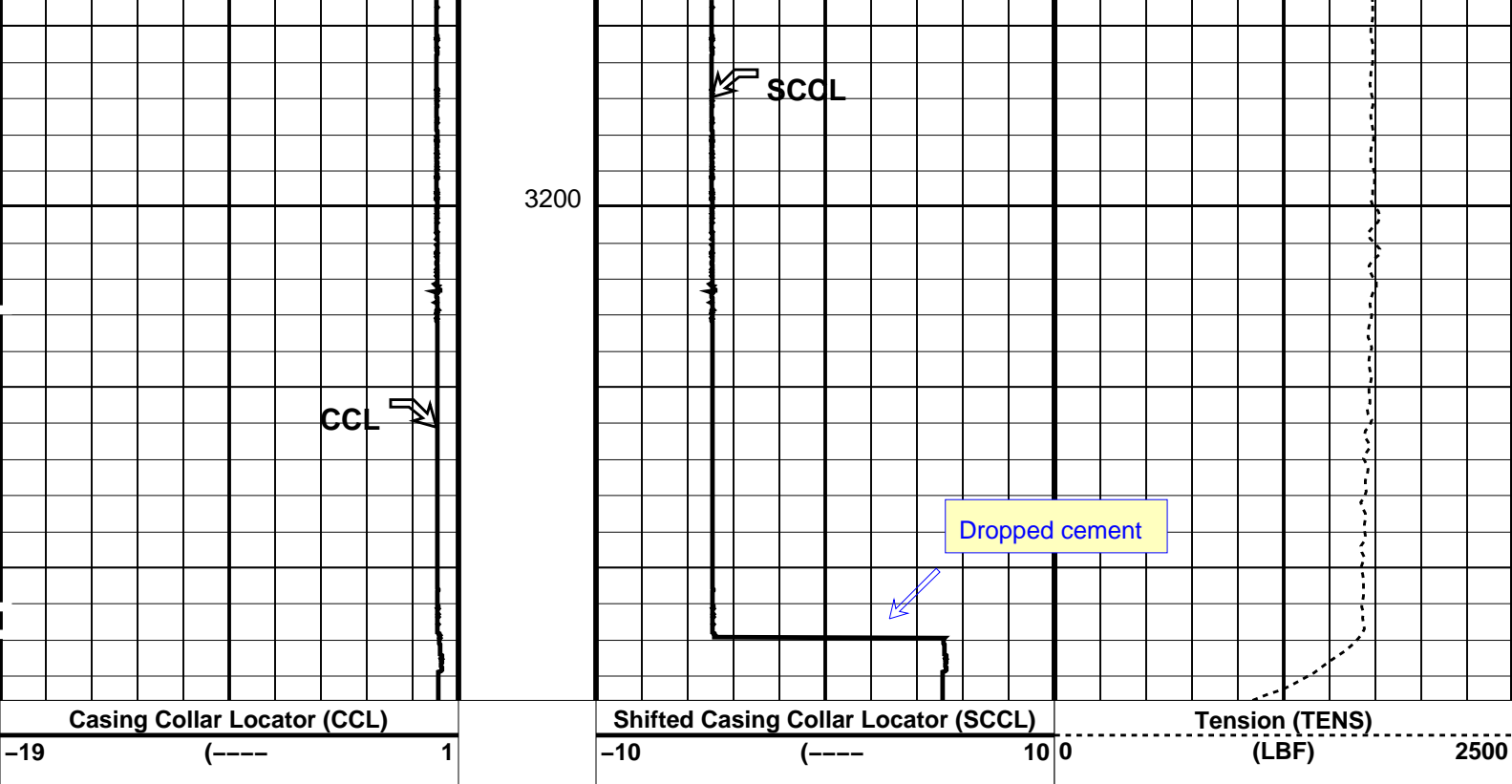
SCOL

CCL

3175

TENS





#### PIP SUMMARY

Time Mark Every 60 S

#### Parameters

DLIS Name	Description	Value
CCLD	CCL-L: Casing Collar Locator	12 IN
CCLT	CCL reset delay	0.3 V
DO	CCL Detection Level	3.6 M
PP	System and Miscellaneous	NORMAL
	Depth Offset for Playback	
	Playback Processing	

Format: PERFO Vertical Scale: 1:200 Graphics File Created: 16-Jan-2008 17:43

#### OP System Version: 15C0-309

MCM

CCL-L 15C0-309 SHM\_GUN 15C0-309

#### Input DLIS Files

DEFAULT PERFO\_058LUP FN:57 PRODUCER 15-Jan-2008 21:06 3210.0 M 3130.8 M

#### Output DLIS Files

DEFAULT PERFO\_064PUP FN:63 PRODUCER 16-Jan-2008 17:43

Schlumberger

Dump Bailer  
Cement Run 1



PERFO2 Operational Summary Listing

Device	Status	Req Depth ( M)	Obs Depth ( M)	Time Used
GUN1	Used	3209.6	3209.6	Tue Jan 15 16:46:45 2008

Company: Esso Australia Pty Ltd.

Well: FTA A4C

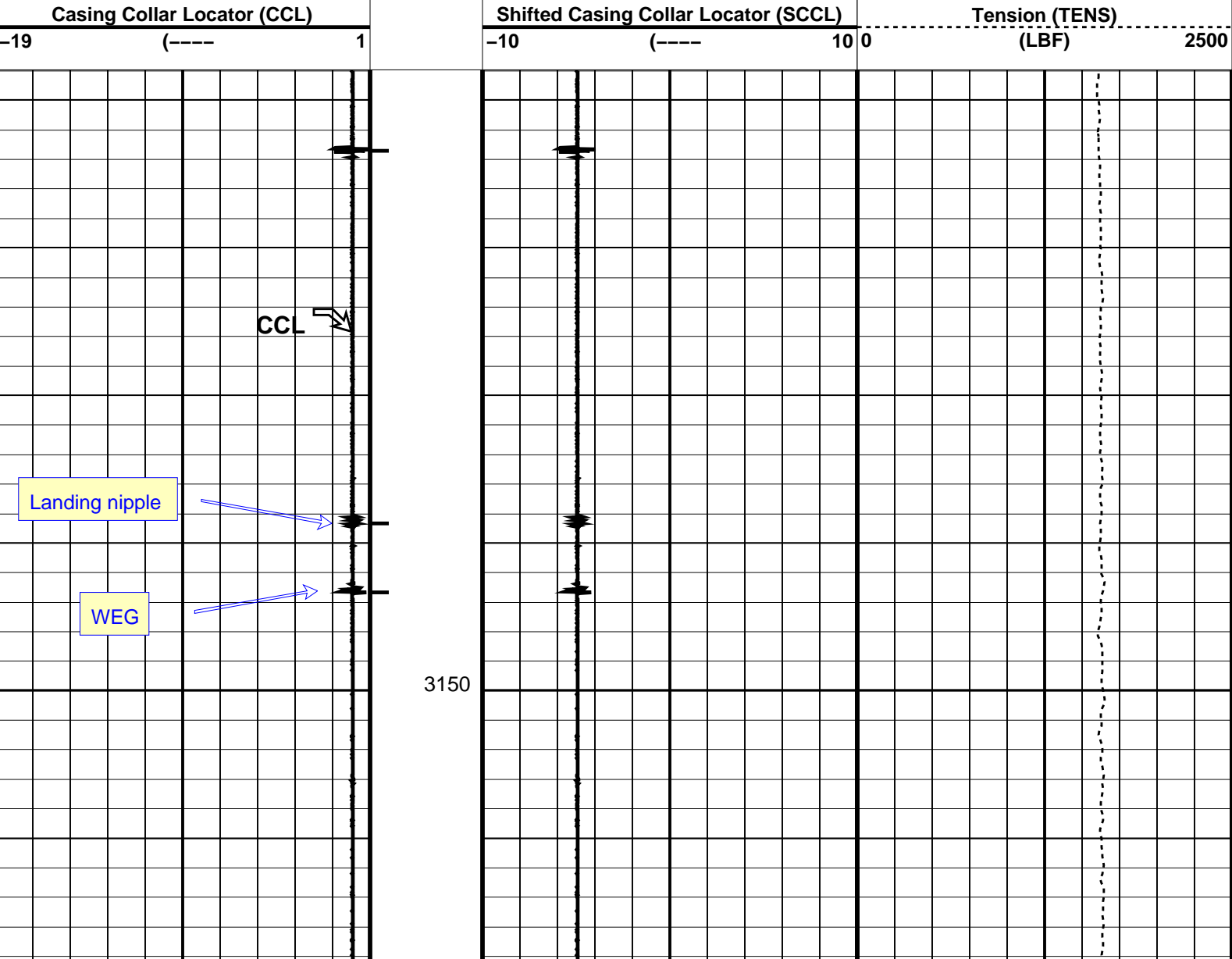
Input DLIS Files					
DEFAULT	PERFO_048LUP	FN:47	PRODUCER	15-Jan-2008 16:44	3212.9 M 3126.2 M
Output DLIS Files					
DEFAULT	PERFO_049PUP	FN:48	PRODUCER	15-Jan-2008 17:01	3215.2 M 3128.9 M

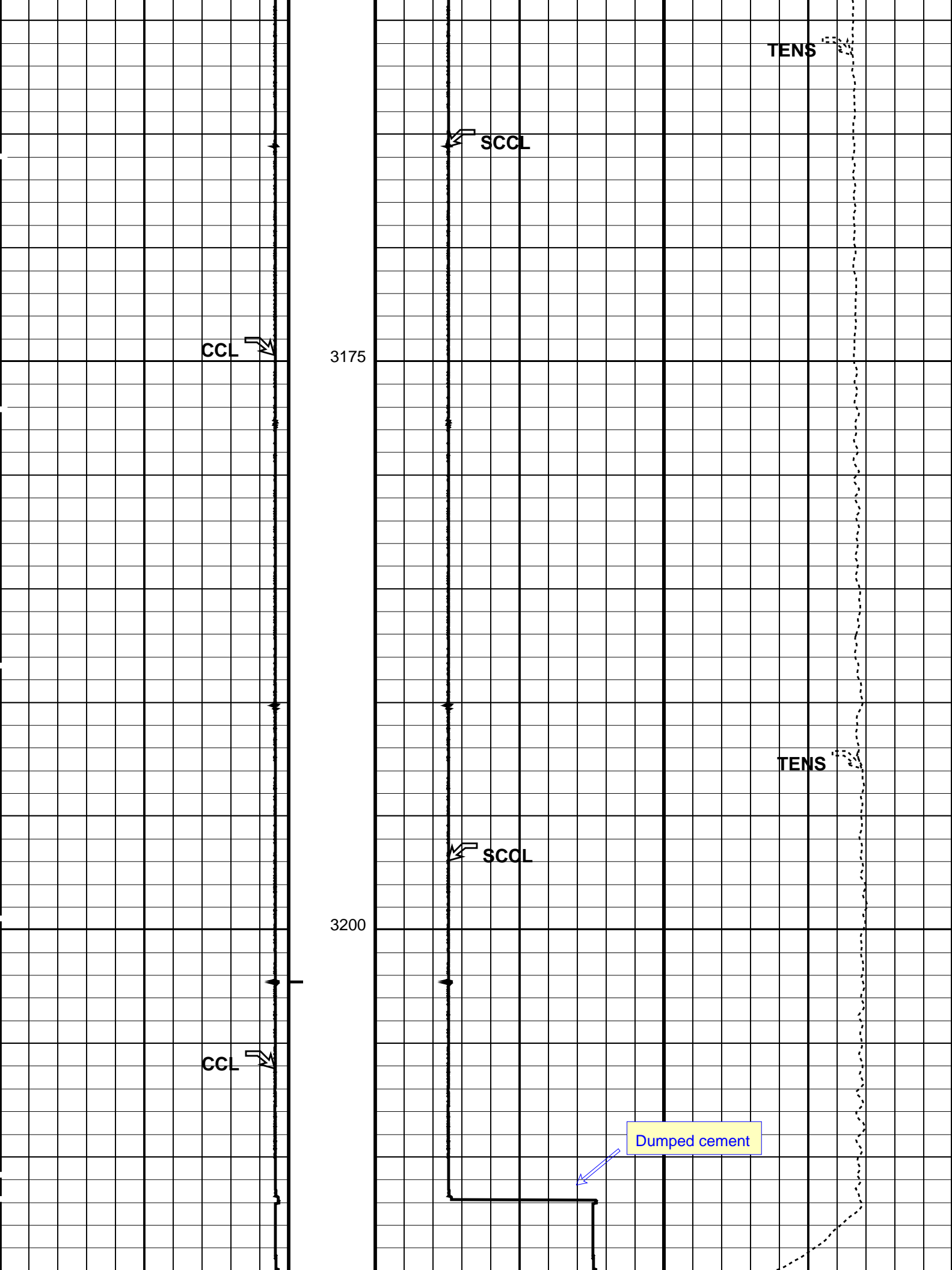
OP System Version: 15C0-309			
MCM			
CCL-L	15C0-309	SHM_GUN	15C0-309

PIP SUMMARY

Time Mark Every 60 S

Casing Collars





Casing Collar Locator (CCL)	Shifted Casing Collar Locator (SCCL)	Tension (TENS)
-19 (----) 1	-10 (----) 10 0	(LBF) 2500

PIP SUMMARY

← Casing Collars

Time Mark Every 60 S

Parameters		
DLIS Name	Description	Value
CCLD	CCL-L: Casing Collar Locator	12 IN
CCLT	CCL reset delay	0.3 V
	CCL Detection Level	
DO	System and Miscellaneous	2.3 M
PP	Depth Offset for Playback	
	Playback Processing	NORMAL

Format: PERFO

Vertical Scale: 1:200

Graphics File Created: 15-Jan-2008 17:01

OP System Version: 15C0-309

MCM

CCL-L

15C0-309

SHM\_GUN

15C0-309

Input DLIS Files					
DEFAULT	PERFO_048LUP	FN:47	PRODUCER	15-Jan-2008 16:44	3212.9 M 3126.2 M
Output DLIS Files					
DEFAULT	PERFO_049PUP	FN:48	PRODUCER	15-Jan-2008 17:01	

Schlumberger

Dump Bailer

Water Run

MAXIS Field Log

PERFO2 Operational Summary Listing					
Device	Status	Req Depth ( M)	Obs Depth ( M)	Time Used	
GUN1	Used	3210.0	3210.0	Tue Jan 15 13:55:09 2008	

Company: Esso Australia Pty Ltd.

Well: FTA A4C

Input DLIS Files

DEFAULT

PERFO\_043LUP

FN:42

PRODUCER

15-Jan-2008 13:55

3214.3 M

3127.6 M

Output DLIS Files

DEFAULT

PERFO\_046PUP

FN:45

PRODUCER

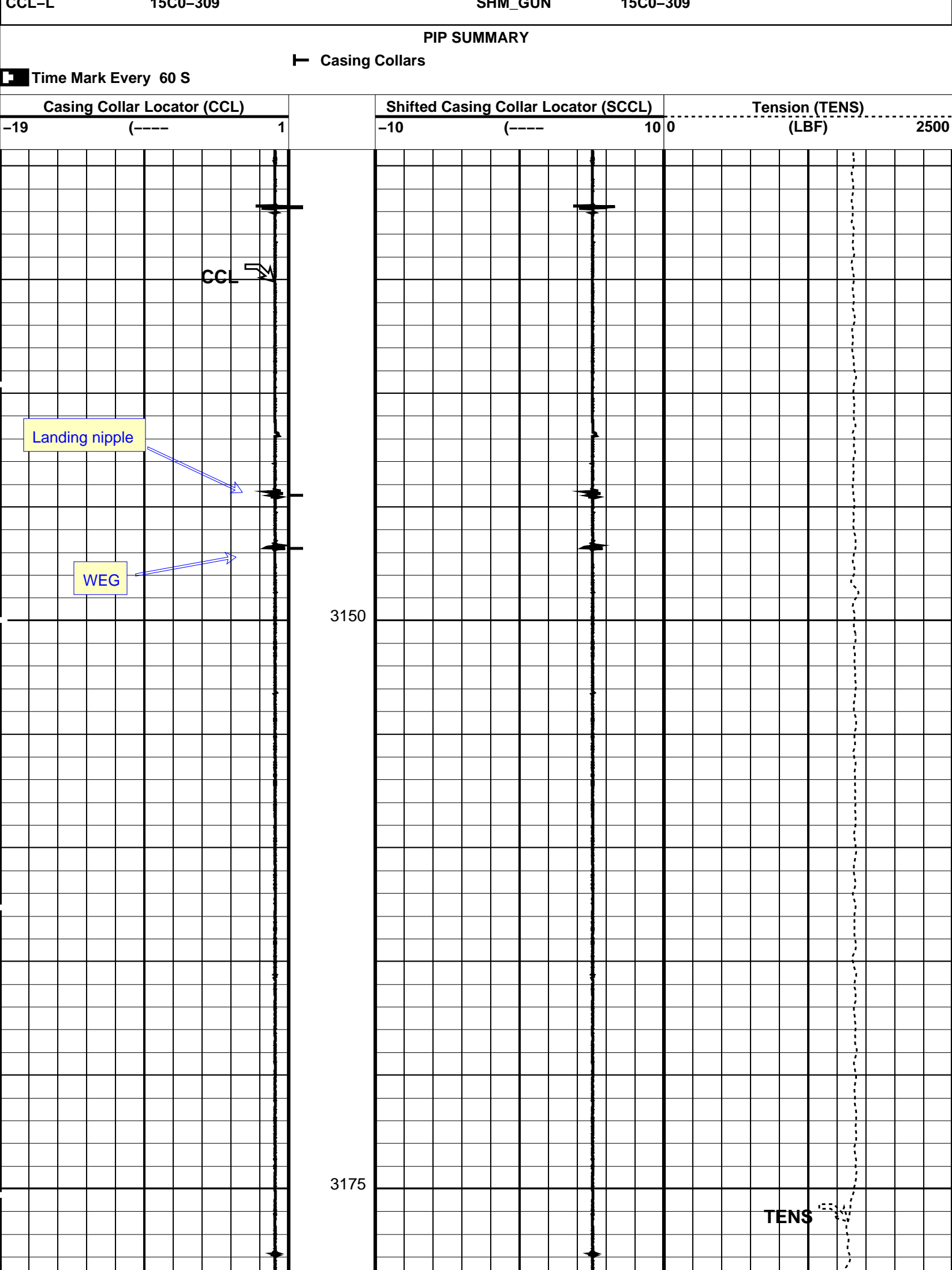
15-Jan-2008 14:57

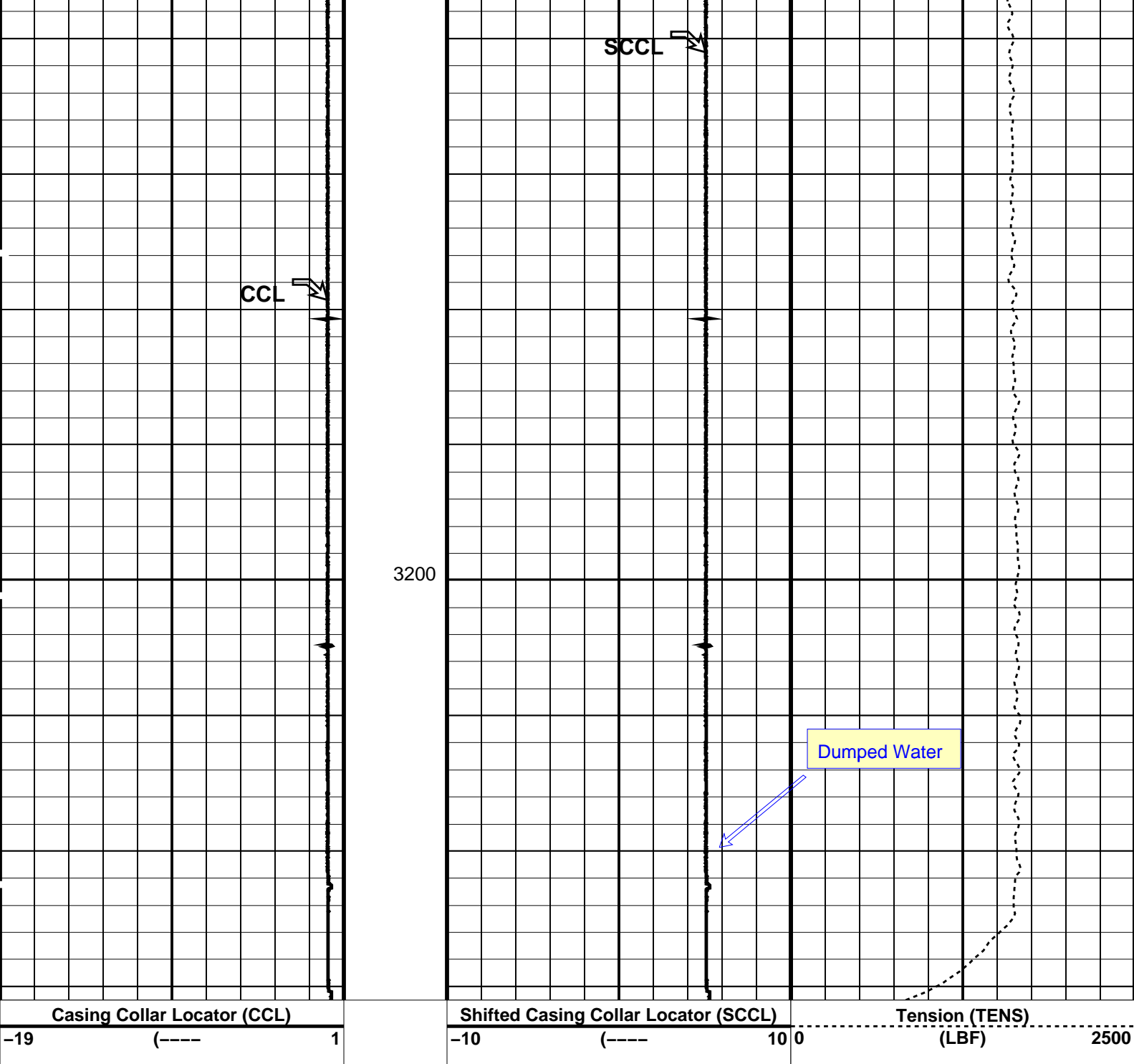
3215.5 M

3129.2 M

OP System Version: 15C0-309

MCM





PIP SUMMARY

Time Mark Every 60 S

Casing Collars

Parameters		
DLIS Name	Description	Value
CCLD	CCL-L: Casing Collar Locator	12 IN
CCLT	CCL reset delay	0.3 V
DO	CCL Detection Level	1.2 M
PP	System and Miscellaneous	NORMAL
	Depth Offset for Playback	
	Playback Processing	
OP System Version: 15C0-309		
MCM		
CCL-L	15C0-309	SHM_GUN 15C0-309

## Input DLIS Files

DEFAULT PERFO\_043LUP FN:42 PRODUCER 15-Jan-2008 13:55 3214.3 M 3127.6 M

## Output DLIS Files

DEFAULT PERFO\_046PUP FN:45 PRODUCER 15-Jan-2008 14:57

**Schlumberger**

## 7" MPBT Plug Setting Pass

MAXIS Field Log

### PERFO2 Operational Summary Listing

Device Status Req Depth ( M) Obs Depth ( M) Time Used

PLUG Used 3223.0 3223.0 Tue Jan 15 9:35:09 2008

Company: Esso Australia Pty Ltd.

Well: FTA A4C

## Output DLIS Files

DEFAULT CCL\_035LUP FN:34 PRODUCER 15-Jan-2008 09:18

### OP System Version: 15C0-309

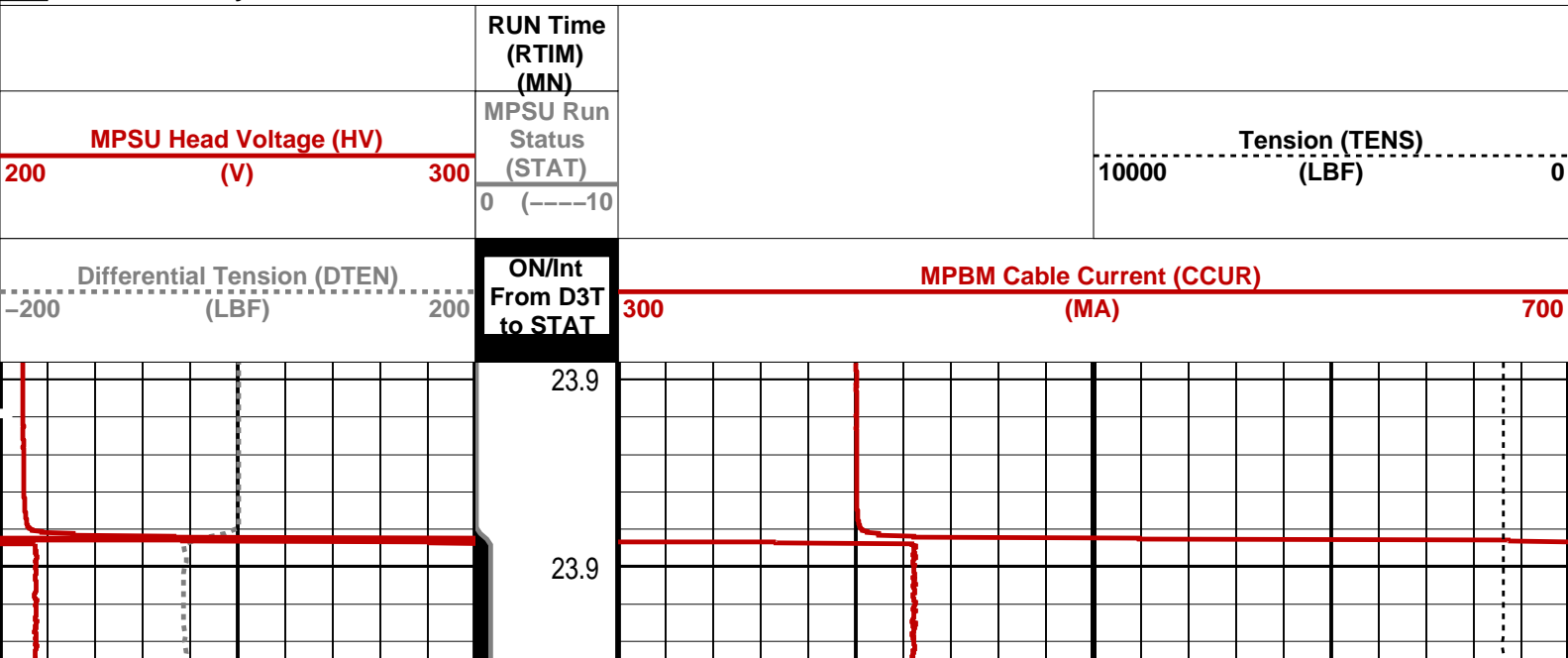
MCM

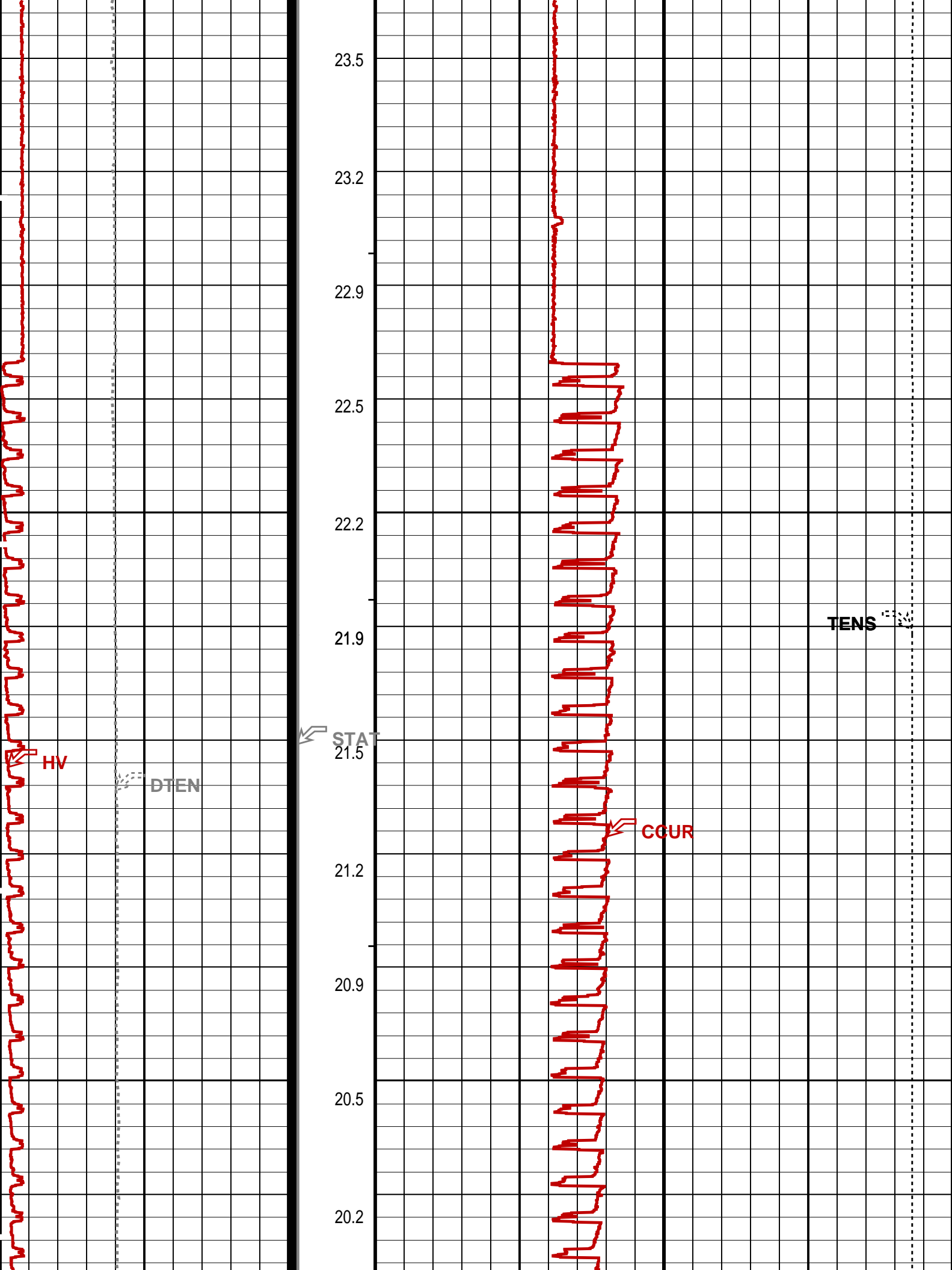
MPEX-CA 15C0-309 MPSU-CB 15C0-309  
CCL-L 15C0-309

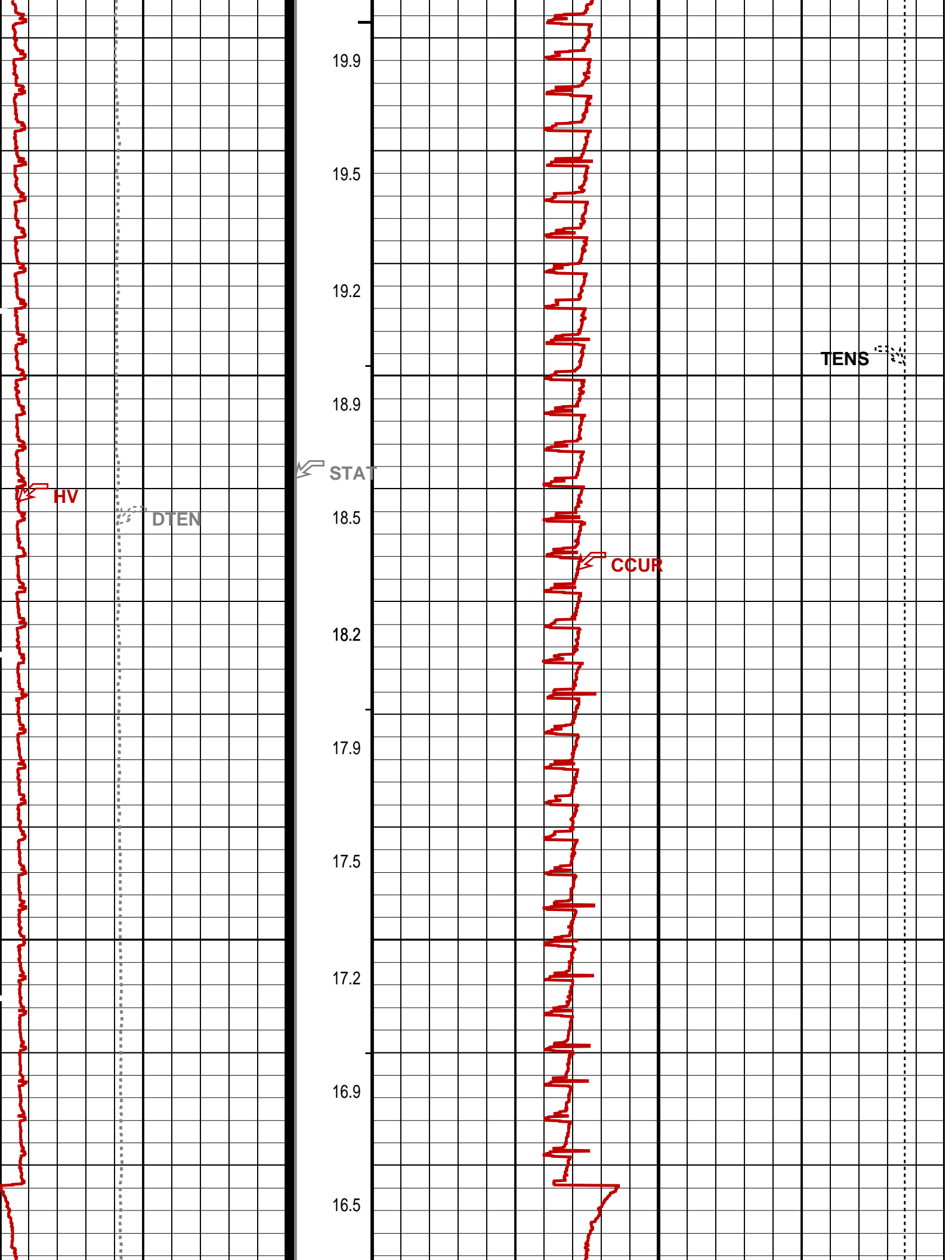
#### PIP SUMMARY

→ MPSU Run Time Every 1 MN  
→ MPSU Run Time Every 10 MN

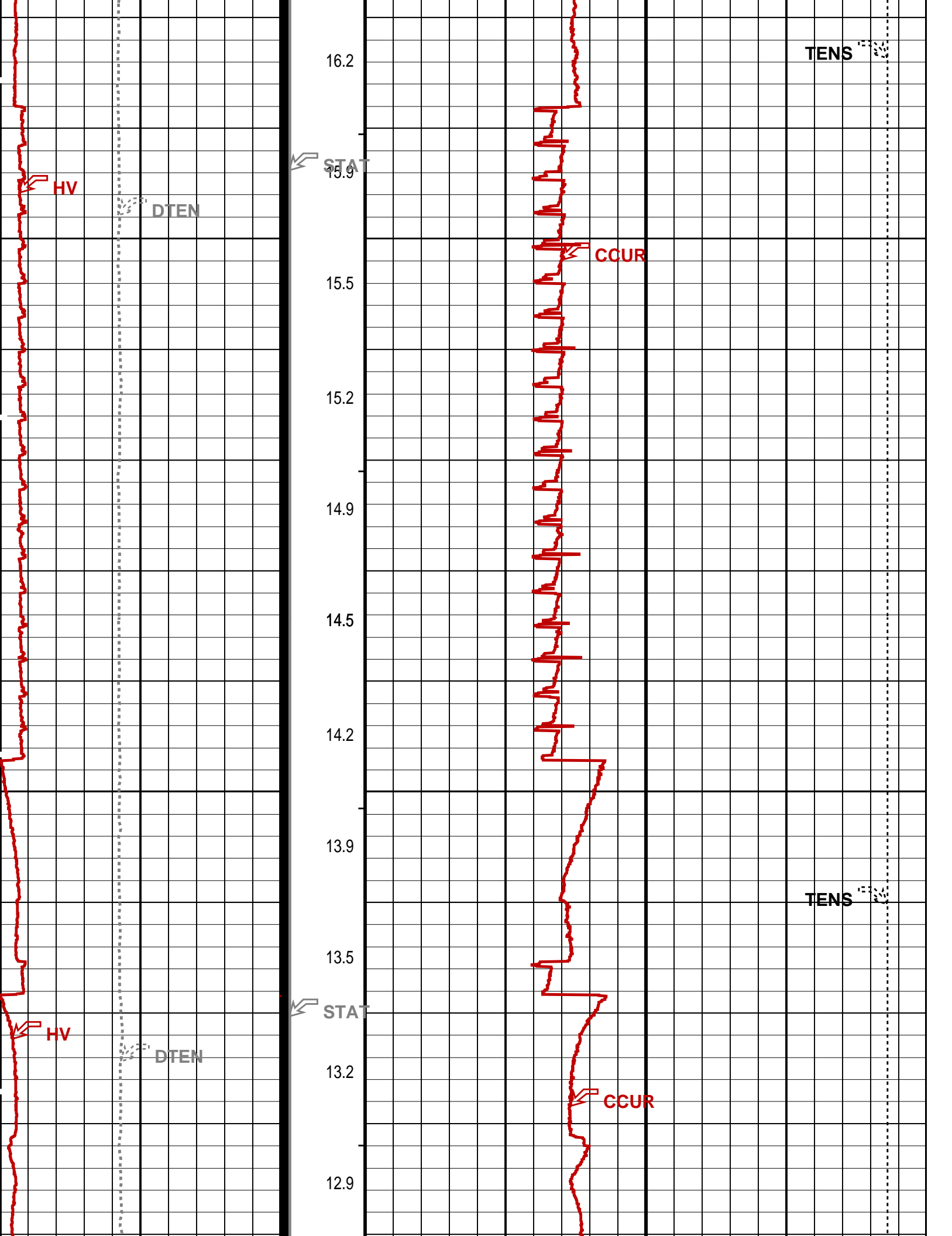
Time Mark Every 60 S

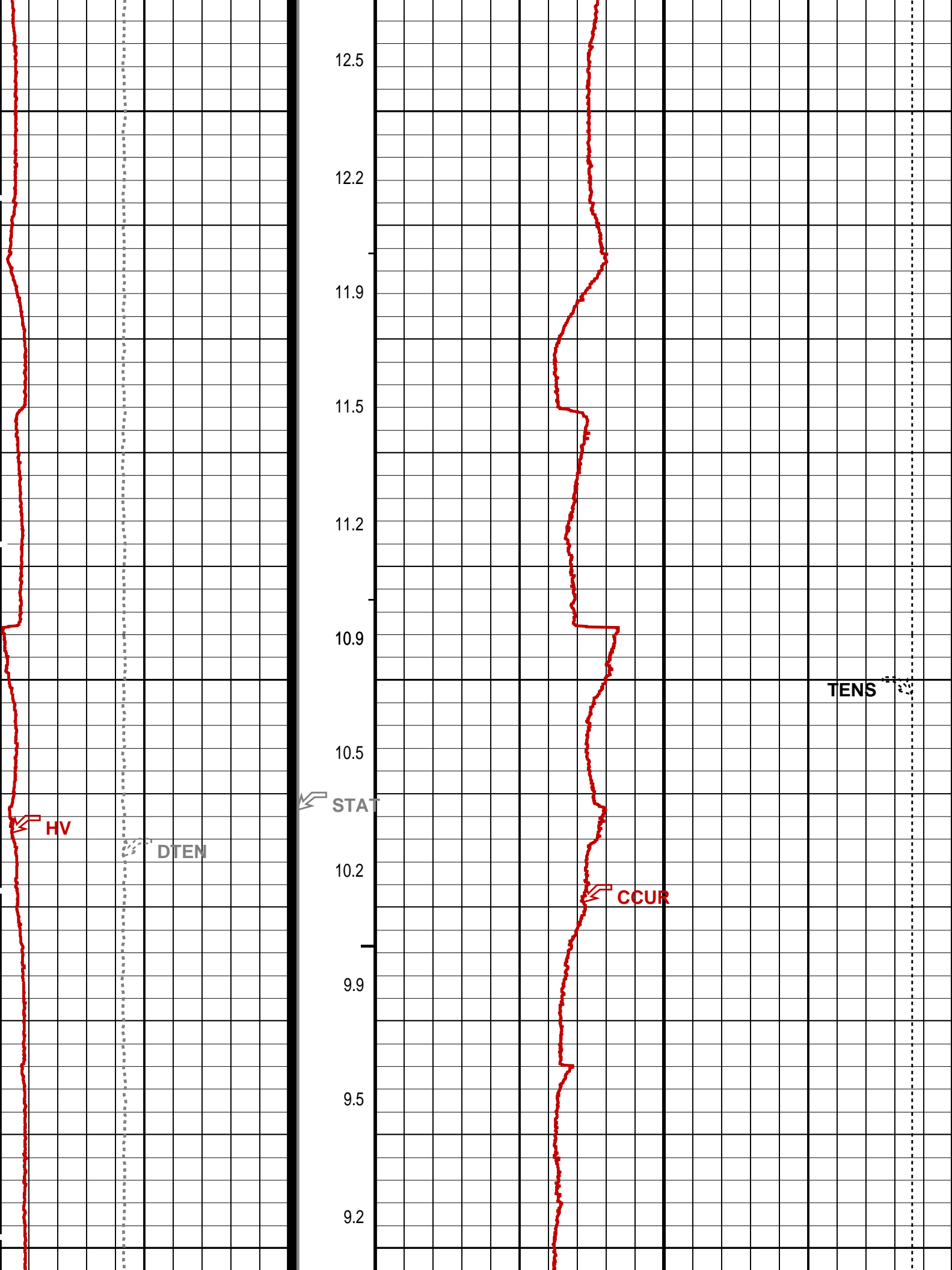


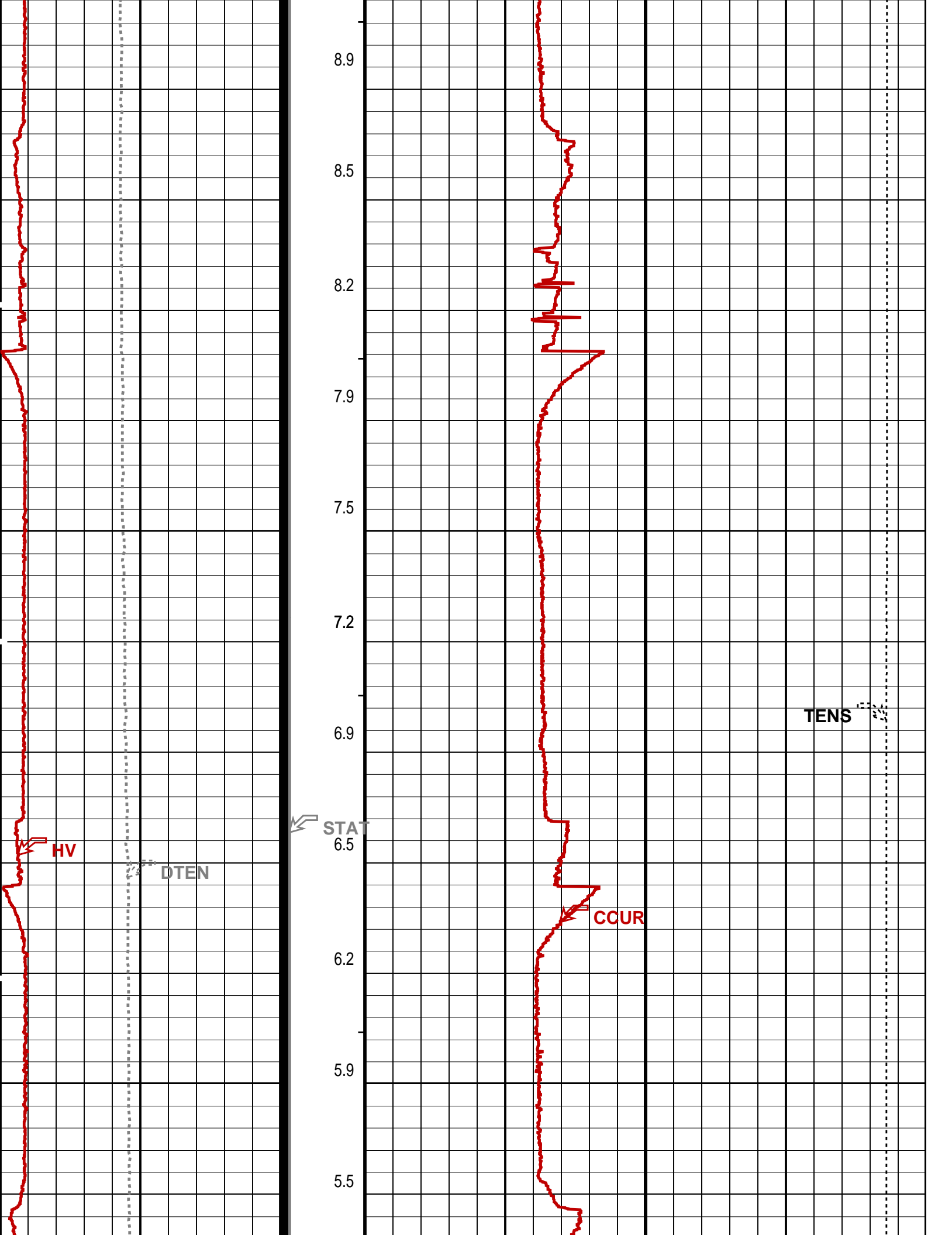


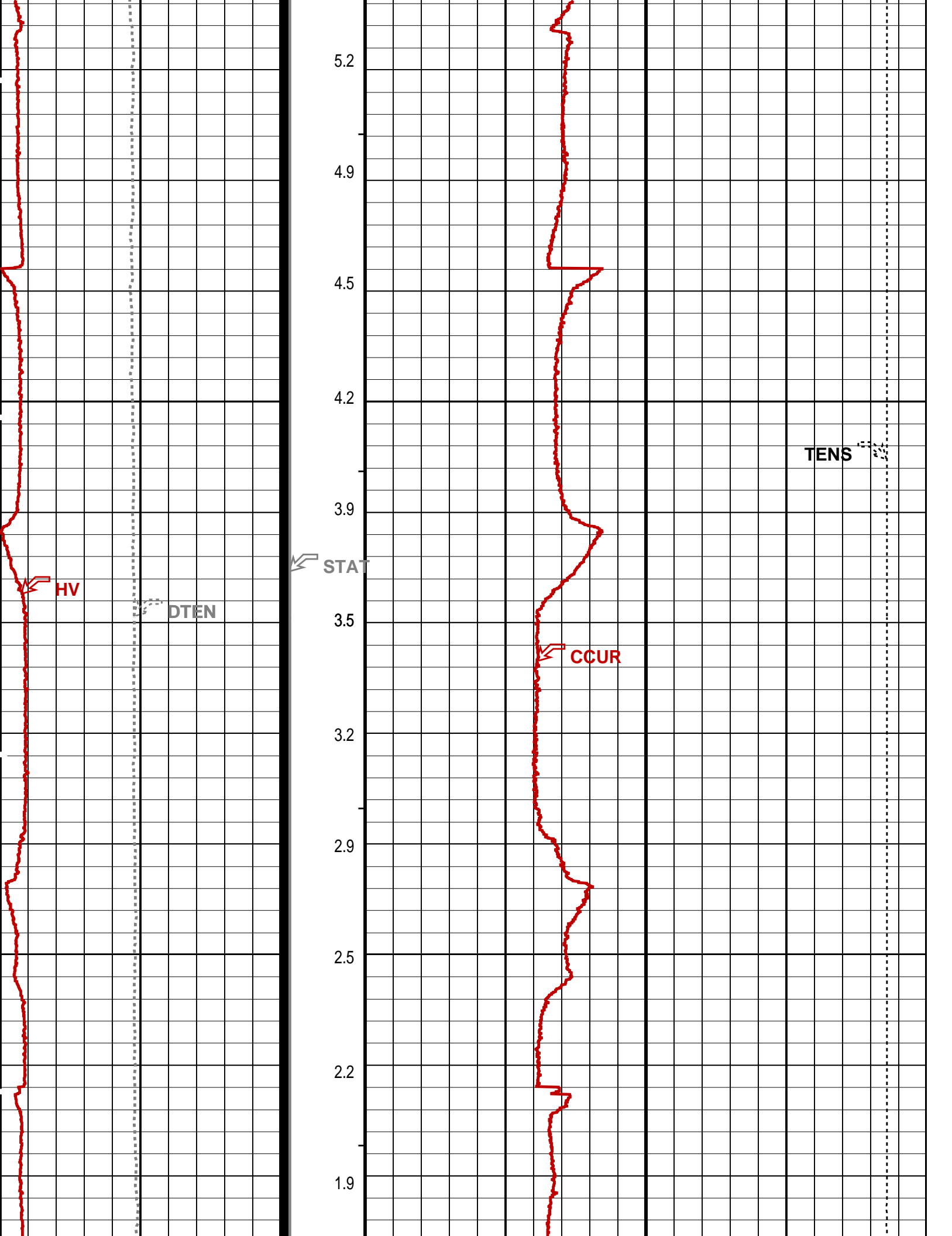


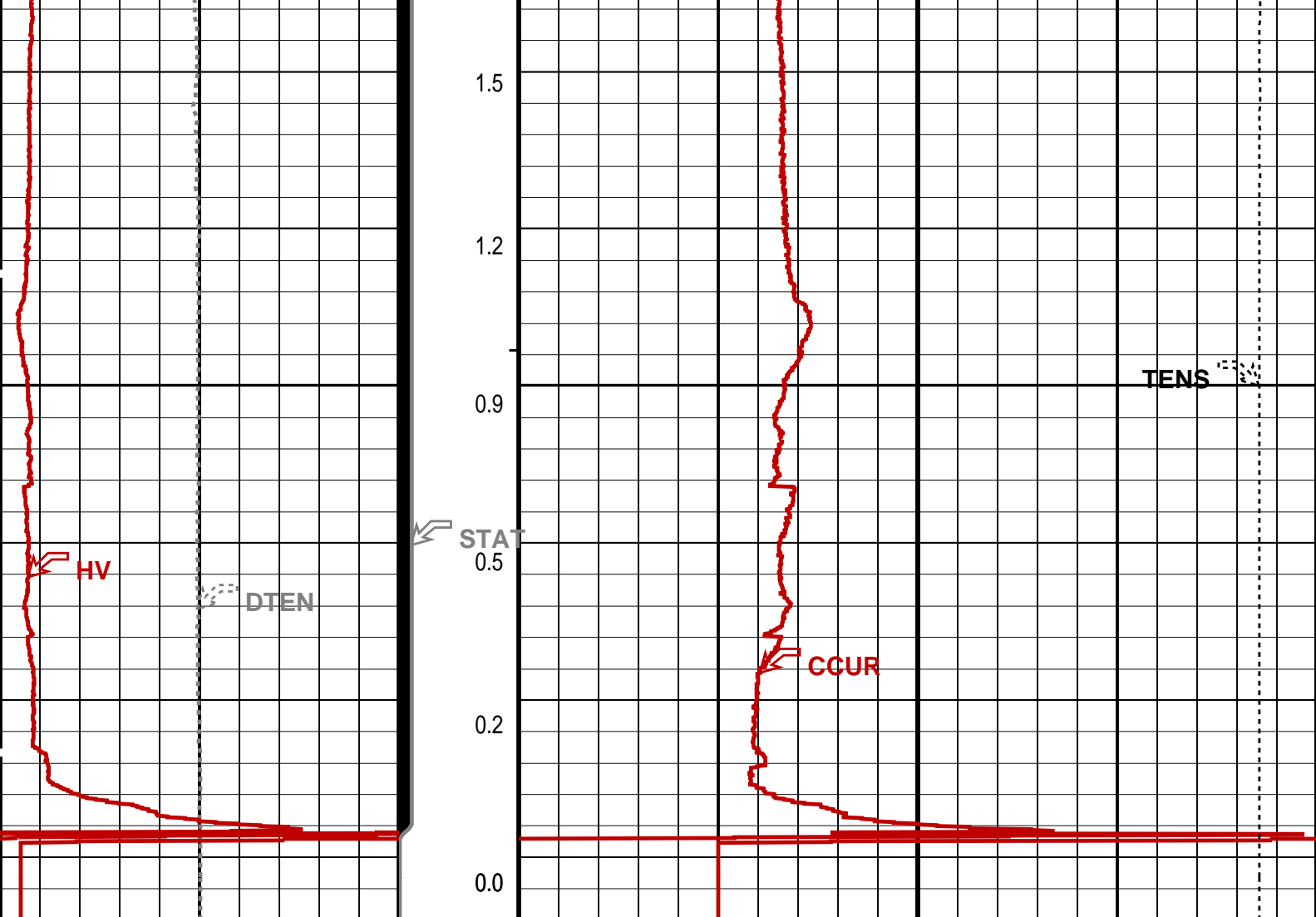












Differential Tension (DTEN) (LBF)	ON/Int From D3T to STAT	MPBM Cable Current (CCUR) (MA)
-200 200	300 700	
MPSU Head Voltage (HV) (V)	MPSU Run Status (STAT)	Tension (TENS) (LBF)
200 300	0 (----10)	10000 0
	RUN Time (RTIM) (MN)	

#### PIP SUMMARY

- MPSU Run Time Every 1 MN
- MPSU Run Time Every 10 MN

Time Mark Every 60 S

#### Parameters

DLIS Name	Description	Value
IPUMP	MPSU-CB: MECHANICAL PLUGBACK SETTING UNIT Intensifier Pump	FALSE

Format: MPBT Vertical Scale: 1:200 Graphics File Created: 15-Jan-2008 09:18

OP System Version: 15C0-309  
MCM

MPEX-CA	15C0-309	MPSU-CB	15C0-309
CCL-L	15C0-309		

#### Output DLIS Files



7" MPBT Plug  
Correlation Pass

MAXIS Field Log

Company: Esso Australia Pty Ltd. Well: FTA A4C

Output DLIS Files

DEFAULT CCL\_033LUP FN:32 PRODUCER 15-Jan-2008 09:04 3220.1 M 3116.4 M

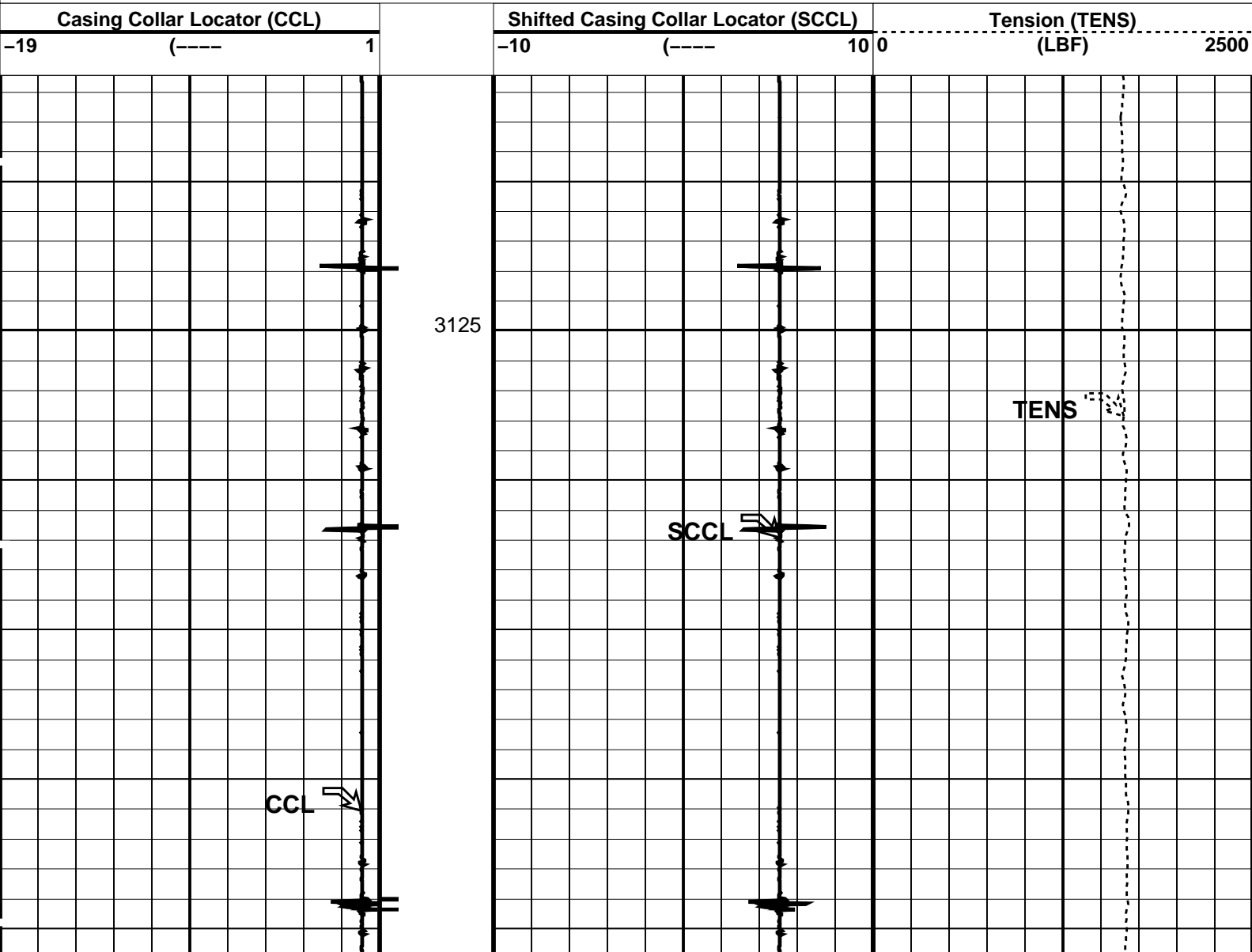
OP System Version: 15C0-309  
MCM

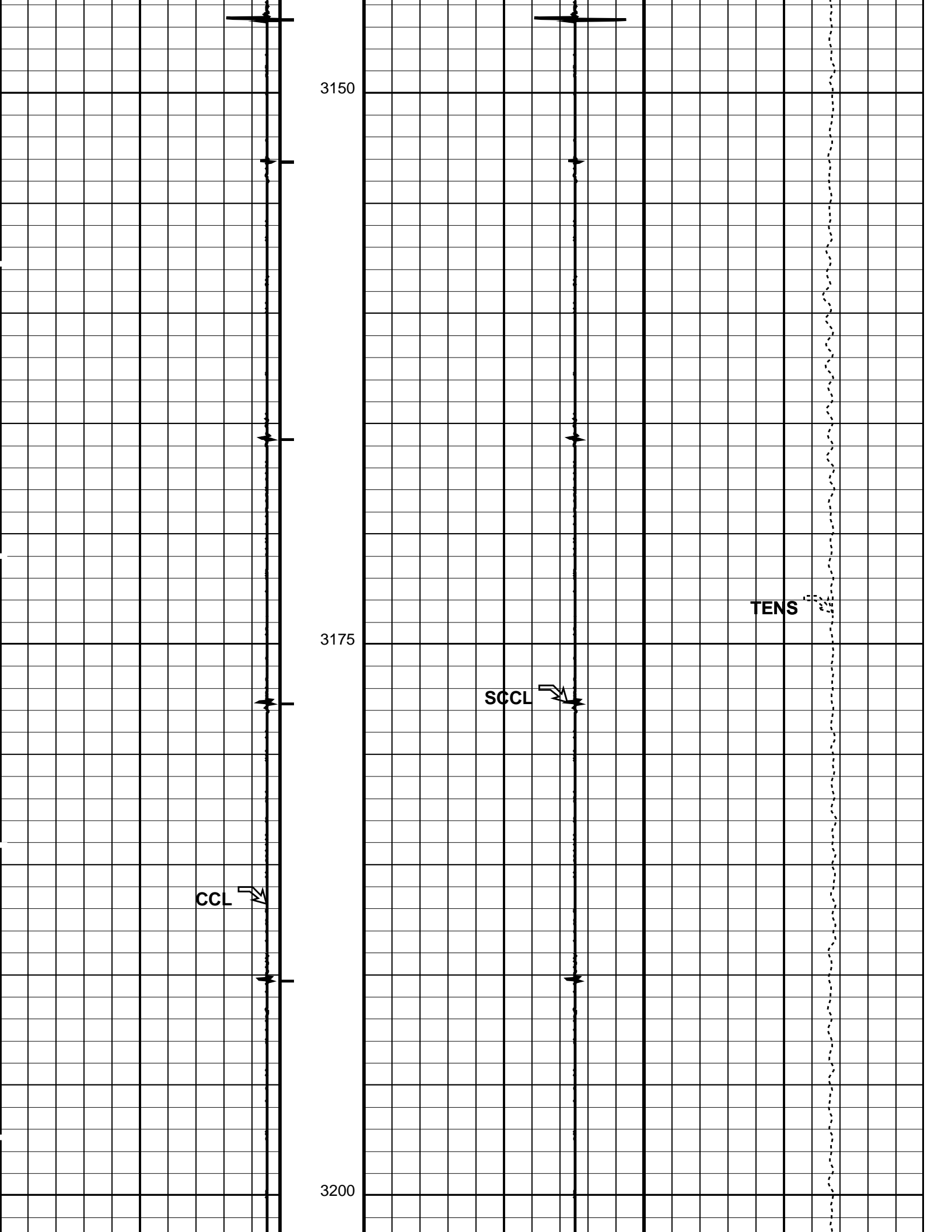
MPEX-CA 15C0-309 MPSU-CB 15C0-309  
CCL-L 15C0-309

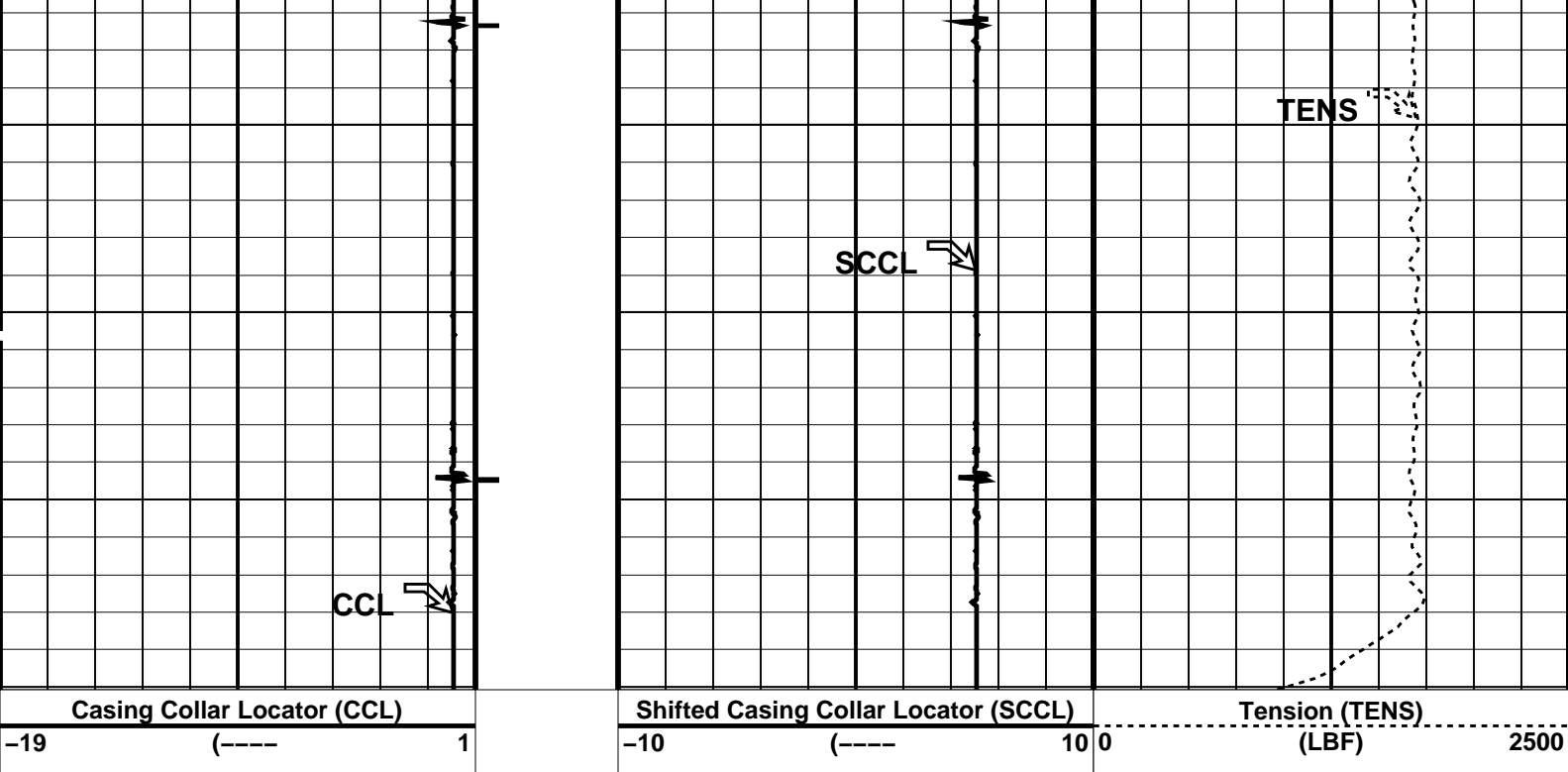
PIP SUMMARY

└─ Casing Collars

Time Mark Every 60 S







PIP SUMMARY

Time Mark Every 60 S

Parameters		
DLIS Name	Description	Value
CCLD	CCL-L: Casing Collar Locator	12 IN
CCLT	CCL reset delay	0.3 V
	CCL Detection Level	

Format: PERFO    Vertical Scale: 1:200    Graphics File Created: 15-Jan-2008 09:04

OP System Version: 15C0-309			
MCM			
MPEX-CA	15C0-309	MPSU-CB	15C0-309
CCL-L	15C0-309		

Output DLIS Files			
DEFAULT	CCL_033LUP	FN:32    PRODUCER	15-Jan-2008 09:04



7" MPBT Plug  
Dummy Run

MAXIS Field Log

Company: Esso Australia Pty Ltd.    Well: FTA A4C

Input DLIS Files					
DEFAULT	PERFO_013LUP	FN:12	PRODUCER	14-Jan-2008 15:03	3242.0 M    3091.0 M



OP System Version: 15C0-309

MCM

MWPT-CA

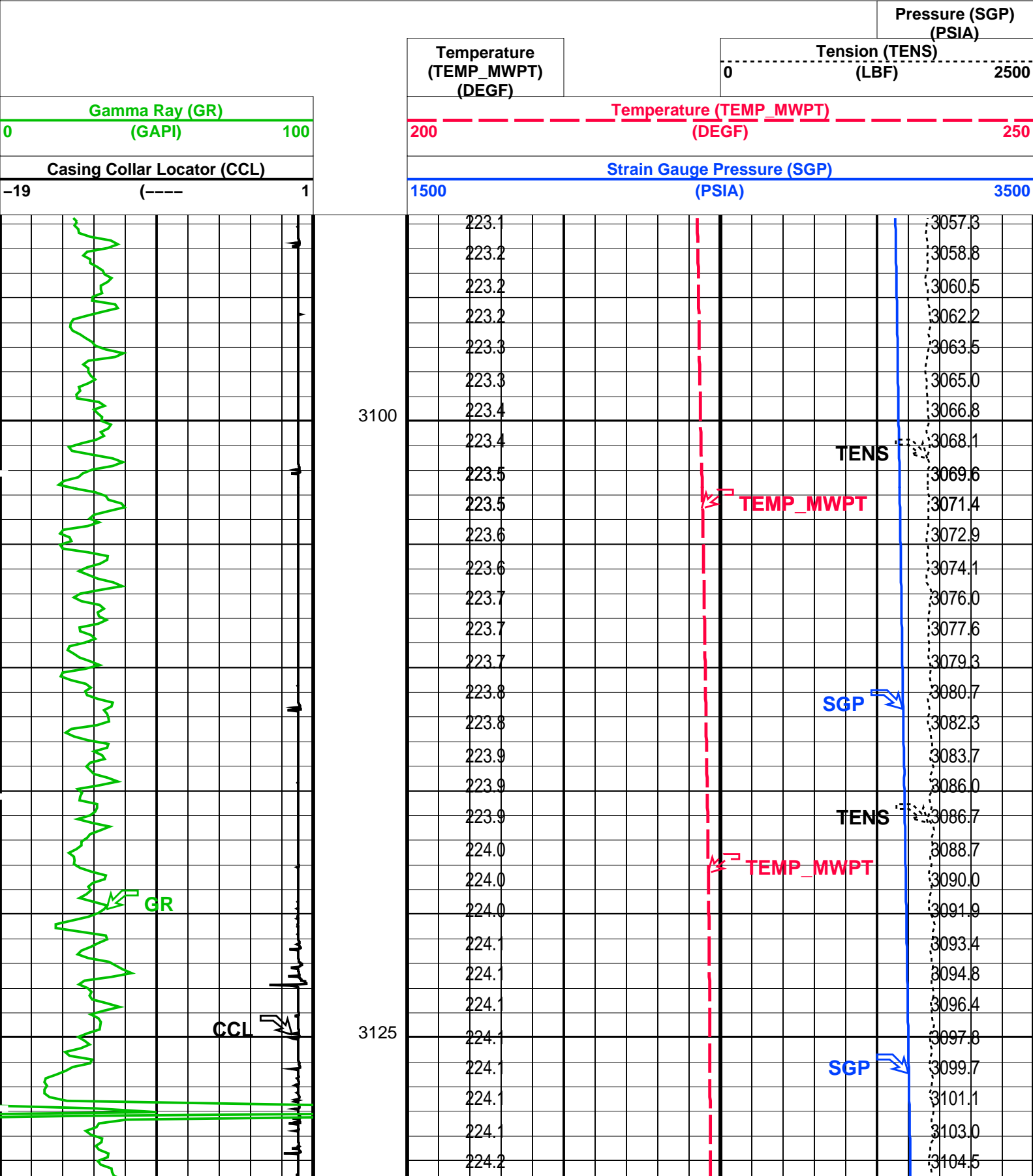
15C0-309

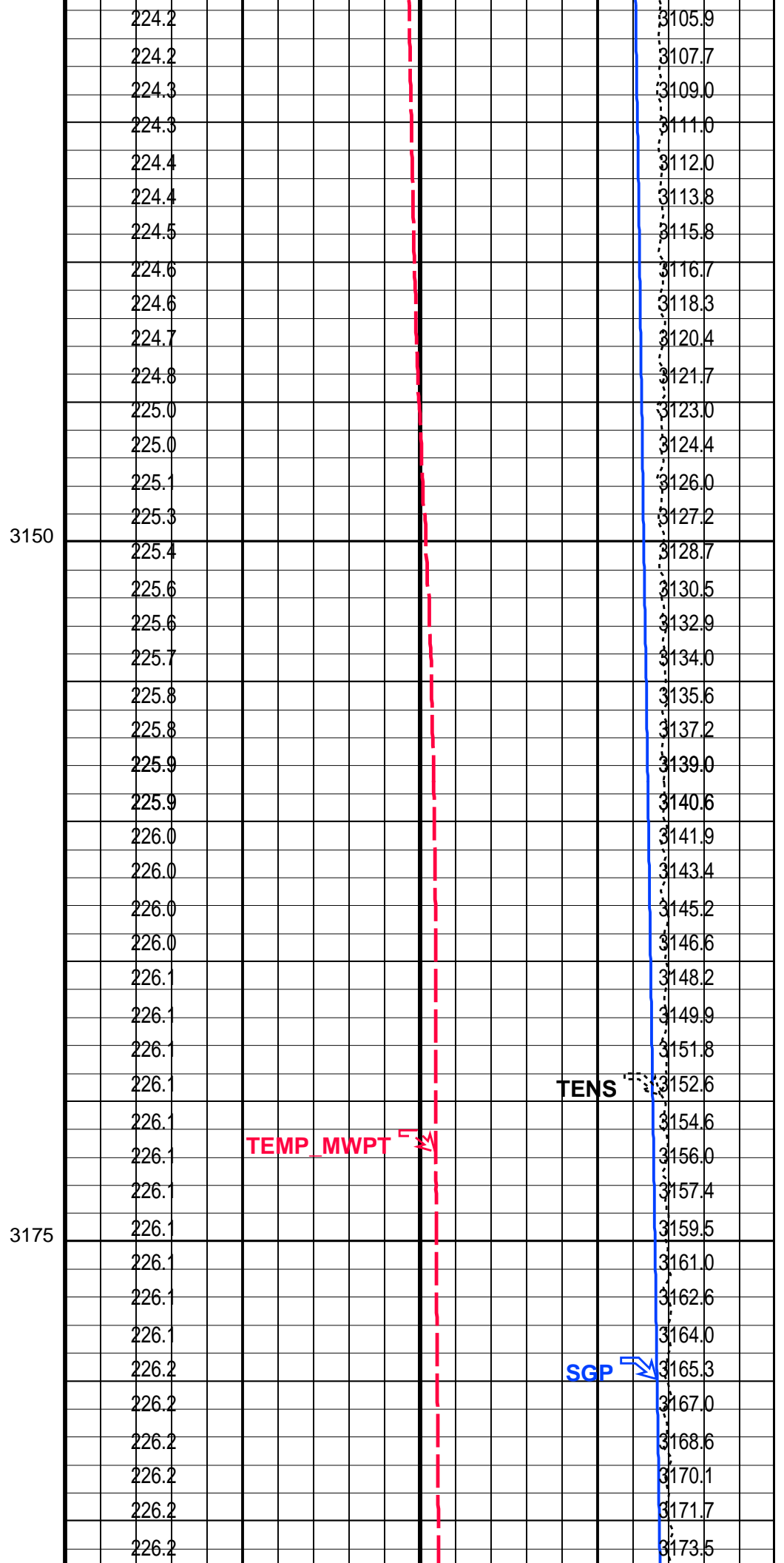
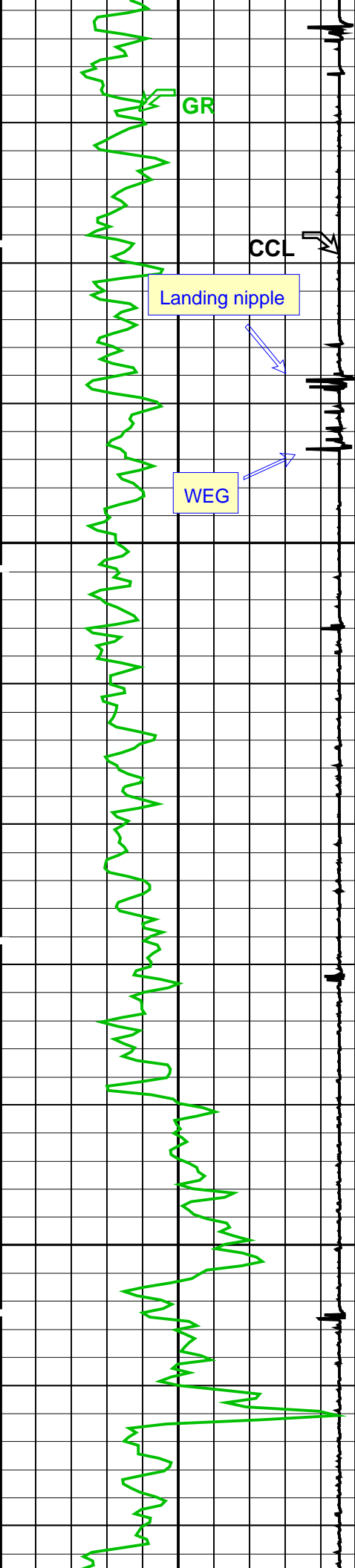
MWGT-AA

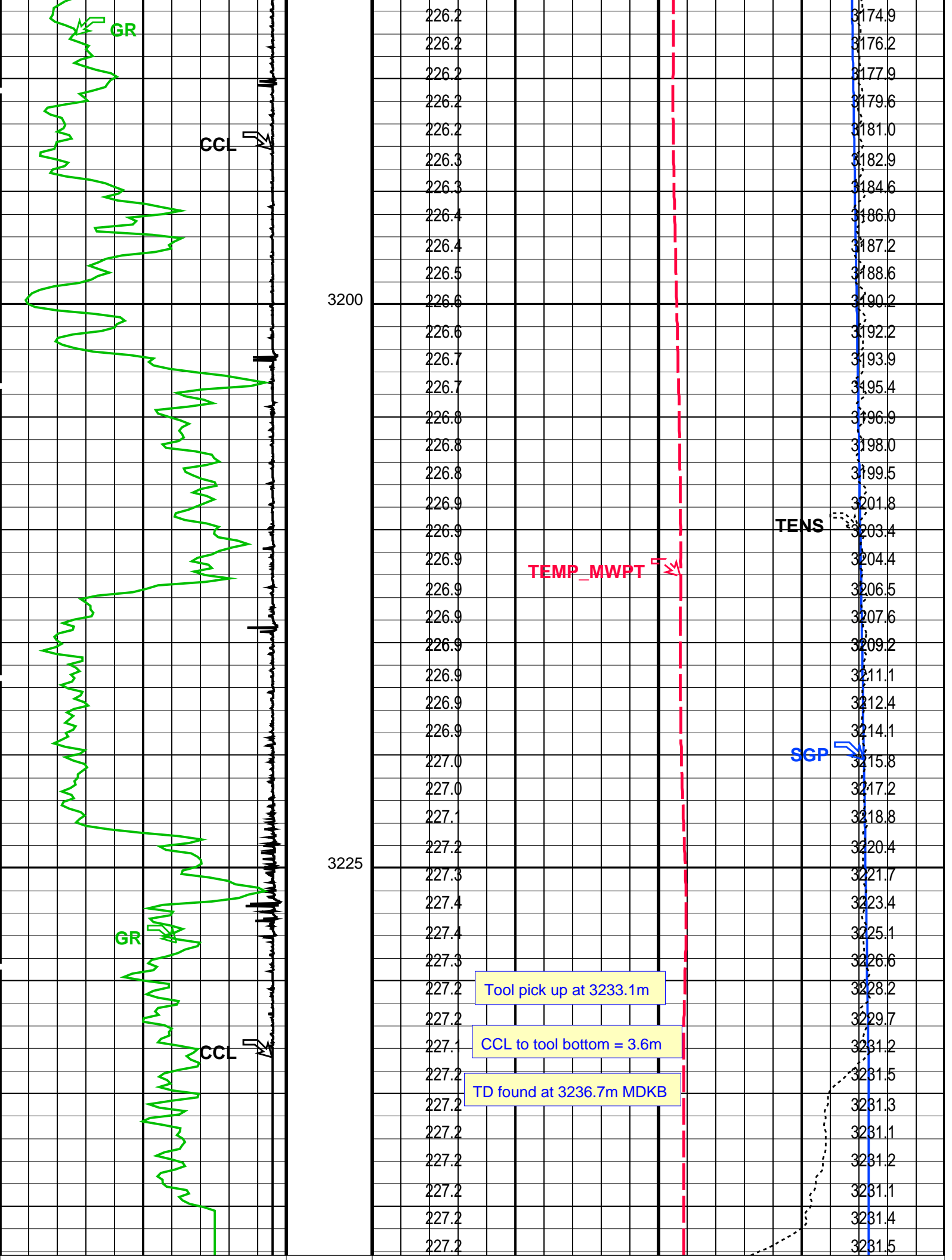
15C0-309

PIP SUMMARY

Time Mark Every 60 S







Casing Collar Locator (CCL)	Strain Gauge Pressure (SGP)	
-19 (----) 1	1500 (PSIA)	3500
Gamma Ray (GR)	Temperature (TEMP_MWPT)	
0 (GAPI) 100	200 (DEGF)	250
	Temperature (TEMP_MWPT) (DEGF)	Tension (TENS) (LBF)
	0	2500
		Pressure (SGP) (PSIA)

PIP SUMMARY

Time Mark Every 60 S

Parameters		
DLIS Name	Description	Value
MWPT-CA: MEASUREMENT WHILE PERFORATING TOOL		
DEVI_FL_CORR	Deviation Angle for Flow Line Correction	0 DEG
FLD	Flow Line Density	1 G/C3
MWPT_NULL_SOURCE	MWPT NULL Temperature Source	TEMS
MWPT_NULL_TEMP	MWPT NULL Temperature	0.0 DEGC
System and Miscellaneous		
DO	Depth Offset for Playback	0.1 M
PP	Playback Processing	NORMAL

Format: MWP    Vertical Scale: 1:200    Graphics File Created: 14-Jan-2008 15:18

OP System Version: 15C0-309			
MCM			
MWPT-CA	15C0-309	MWGT-AA	15C0-309

Input DLIS Files					
DEFAULT	PERFO_013LUP	FN:12	PRODUCER	14-Jan-2008 15:03	3242.0 M 3091.0 M
Output DLIS Files					
DEFAULT	PERFO_014PUP	FN:13	PRODUCER	14-Jan-2008 15:18	

Company:	Esso Australia Pty Ltd.	Schlumberger
Well:	FTA A4C	
Field:	Gippsland Basin	
Platform:	Fortescue	
Country:	Australia	
MBPT 7" Plug Setting Record		