

Company: Esso Australia Pty Ltd.

Well: CBA F8
Field: Cobia
Rig: ISS Rig 22

Country: Australia

3.65" PowerCutter
Tubing Cut Record
22-Feb-2008

Rig: ISS Rig 22
Field: Cobia
Location: Gippsland
Well: CBA F8
Company: Esso Australia Pty Ltd.

Rig:	ISS Rig 22	
Field:	Cobia	
Location:	Gippsland	
Well:	CBA F8	
Company:	Esso Australia Pt	
Logging Date	LOCATION	
	State: Victoria	Gippsland
		Basin
		Bass Strait
Run Number	Permanent Datum:	Elev.: K.B. 32.40 m
	Log Measured From:	G.L. -79.00 m
	Drilling Measured From:	D.F. 32.40 m
Depth Driller	Max. Well Deviation 55 deg	Elev.: 0.00 m
Schlumberger Depth	55 deg	32.40 m above Perm. Datum
Bottom Log Interval	55 deg	
Top Log Interval	55 deg	
Casing Fluid Type	55 deg	
Salinity	55 deg	
Density	55 deg	
Fluid Level	55 deg	
BIT/CASING/TUBING STRING	55 deg	
Bit Size	55 deg	
From	55 deg	
To	55 deg	
Casing/Tubing Size	55 deg	
Weight	55 deg	
Grade	55 deg	
From	55 deg	
To	55 deg	
Maximum Recorded Temperatures	55 deg	
Logger On Bottom	55 deg	
Unit Number	55 deg	
Recorded By	55 deg	
Witnessed By	55 deg	

PVT DATA				Run 1	Run 2	Run 3
Oil Density						
Water Salinity						
Gas Gravity						
Bo						
Bw						
1/Bg						
Bubble Point Pressure						
Bubble Point Temperature						
Solution GOR						
Maximum Deviation	55 deg					
CEMENTING DATA						
Primary/Squeeze						
Casing String No						
Lead Cement Type						
Volume						
Density						
Water Loss						
Additives						
Tail Cement Type						
Volume						
Density						
Water Loss						
Additives						
Expected Cement Top						
Logging Date						
Run Number						
Depth Driller						
Schlumberger Depth						
Bottom Log Interval						
Top Log Interval						
Casing Fluid Type						
Salinity						
Density						
Fluid Level						
BIT/CASING/TUBING STRING						
Bit Size						
From						
To						
Casing/Tubing Size						
Weight						
Grade						
From						
To						
Maximum Recorded Temperatures						
Logger On Bottom						
Unit Number	Location					
Recorded By						
Witnessed By						

DEPTH SUMMARY LISTING

Date Created: 22-FEB-2008 3:39:49

Depth System Equipment

Depth Measuring Device		Tension Device		Logging Cable	
Type:	IDW-E	Type:	CMTD-B/A	Type:	2-32ZT
Serial Number:	727	Serial Number:	1711	Serial Number:	24187
Calibration Date:	20-Sep-2007	Calibration Date:	28-Jan-2008	Length:	5999 M
Calibrator Serial Number:	1	Calibrator Serial Number:	1173	Conveyance Method: Wireline Rig Type: Offshore_Fixed	
Calibration Cable Type:	2-32ZT	Calibration Gain:	0.97		
Wheel Correction 1:	-4	Calibration Offset:	-437.00		
Wheel Correction 2:	-3				

Depth Control Parameters

Log Sequence:	Subsequent Log In the Well
Reference Log Name:	Driller's Tubing Tally
Reference Log Run Number:	
Reference Log Date:	













Depth Control Remarks

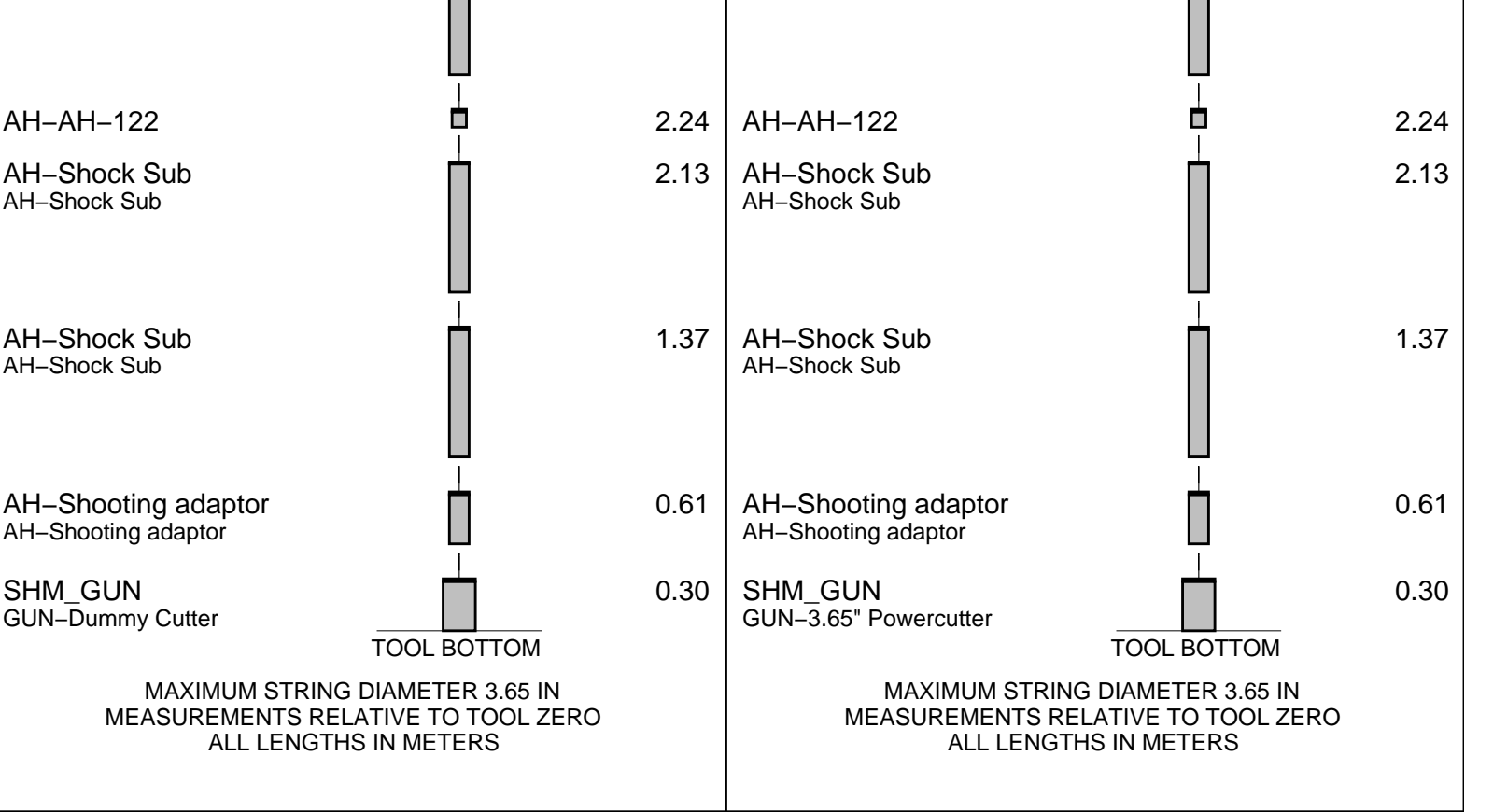
1. Correlated to Driller Tubing Tally
- 2.
- 3.
- 4.
- 5.
- 6.

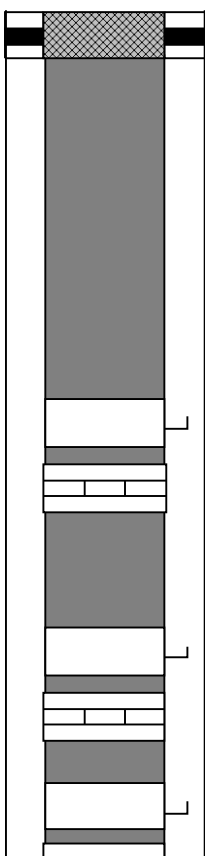
DISCLAIMER

THE USE OF AND RELIANCE UPON THIS RECORDED-DATA BY THE HEREIN NAMED COMPANY (AND ANY OF ITS AFFILIATES, PARTNERS, REPRESENTATIVES, AGENTS, CONSULTANTS AND EMPLOYEES) IS SUBJECT TO THE TERMS AND CONDITIONS AGREED UPON BETWEEN SCHLUMBERGER AND THE COMPANY, INCLUDING: (a) RESTRICTIONS ON USE OF THE RECORDED-DATA; (b) DISCLAIMERS AND WAIVERS OF WARRANTIES AND REPRESENTATIONS REGARDING COMPANY'S USE OF AND RELIANCE UPON THE RECORDED-DATA; AND (c) CUSTOMER'S FULL AND SOLE RESPONSIBILITY FOR ANY INFERENCE DRAWN OR DECISION MADE IN CONNECTION WITH THE USE OF THIS RECORDED-DATA.

OTHER SERVICES1	OTHER SERVICES2
OS1: Drift Run	OS1:
OS2:	OS2:
OS3:	OS3:
OS4:	OS4:
OS5:	OS5:
REMARKS: RUN NUMBER 1	REMARKS: RUN NUMBER 2
Log correlated to Drillers Tubing Tally	
Objectives: to confirm access for the 3.65" Powercutter through the 3.688" Nipples.	
Then to cut the 4-1/2" tubing @ 3475 m MDKB.	
CCL to Cutter = 2.63 m	
CCL Stop Depth = 3472.37 m MDKB	
SECURE initiated	

Day crew: S.Kiss, A.Hall					
Night crew: P.Battams, C.Harris					
RUN 1 SERVICE ORDER #: PROGRAM VERSION: 16C0-147 FLUID LEVEL:			RUN 2 SERVICE ORDER #: PROGRAM VERSION: FLUID LEVEL:		
LOGGED INTERVAL	START	STOP	LOGGED INTERVAL	START	STOP
EQUIPMENT DESCRIPTION					
RUN 1			RUN 2		
SURFACE EQUIPMENT			SURFACE EQUIPMENT		
WITM (SHM)			WITM (SHM)		
DOWNHOLE EQUIPMENT			DOWNHOLE EQUIPMENT		
MH-22 MH-22		7.68	MH-22 MH-22		7.68
AH-38		7.20	AH-38		7.20
EQF-46 EQF-46		7.11	EQF-46 EQF-46 201		7.11
EQF-46 EQF-46		5.28	EQF-46 EQF-46		5.28
CCL-L CCL-L		3.45	CCL-L CCL-L 7202		3.45
Tension CCL		___ TOOL ZERO	Tension CCL		___ TOOL ZERO
AH-WPSA-BA AH-WPSA-BA 4001		3.00	AH-WPSA-BA AH-WPSA-BA 4001		3.00



Production String	(in)			(m)	Well Schematic	(m)	(in)			Casing String
	OD	ID	MD				MD	OD	ID	
Tubing Hanger	7.625	4.500	11.9					7.625		Casing String
Tubing	4.500	3.958						10.750		Casing String
						687.0		10.750		Casing Shoe
Gas Lift Mandrel	4.500	3.863	1142.0							
Nipple	4.500	3.688	1156.0							
Gas Lift Mandrel	4.500	3.863	1802.0							
Nipple	4.500	3.688	1815.0							
Gas Lift Mandrel	4.500	3.863	2050.0							
Nipple	4.500	3.688	2065.0							

OP System Version: 16C0-147

MCM

SHM_GUN

16C0-147

CCL-L

16C0-147

PIP SUMMARY

 Time Mark Every 60 S

Raw Casing Collar Locator (RCCL)

-3 (----) 17

Casing Collar Locator (CCL)

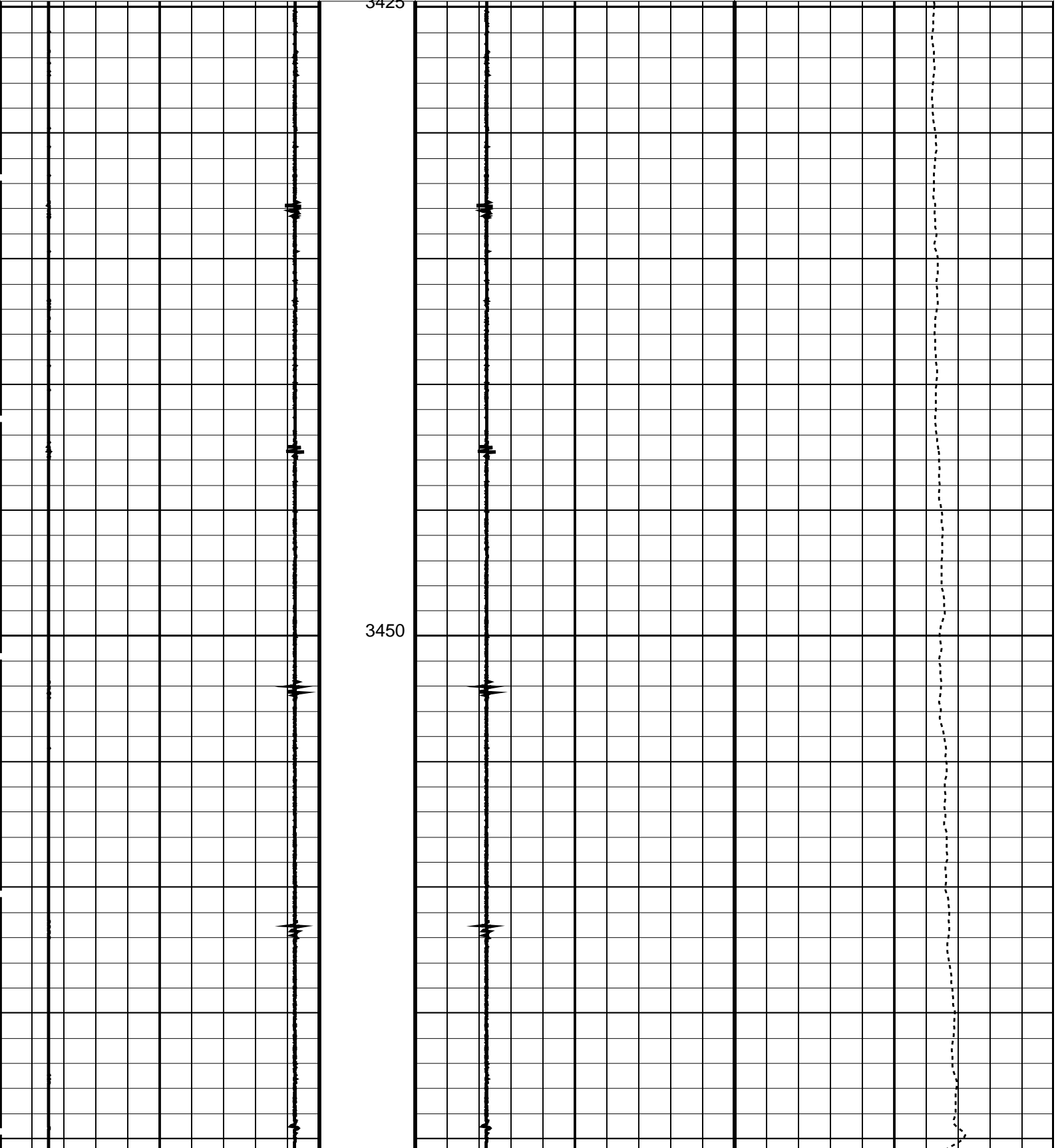
-19 (----) 1

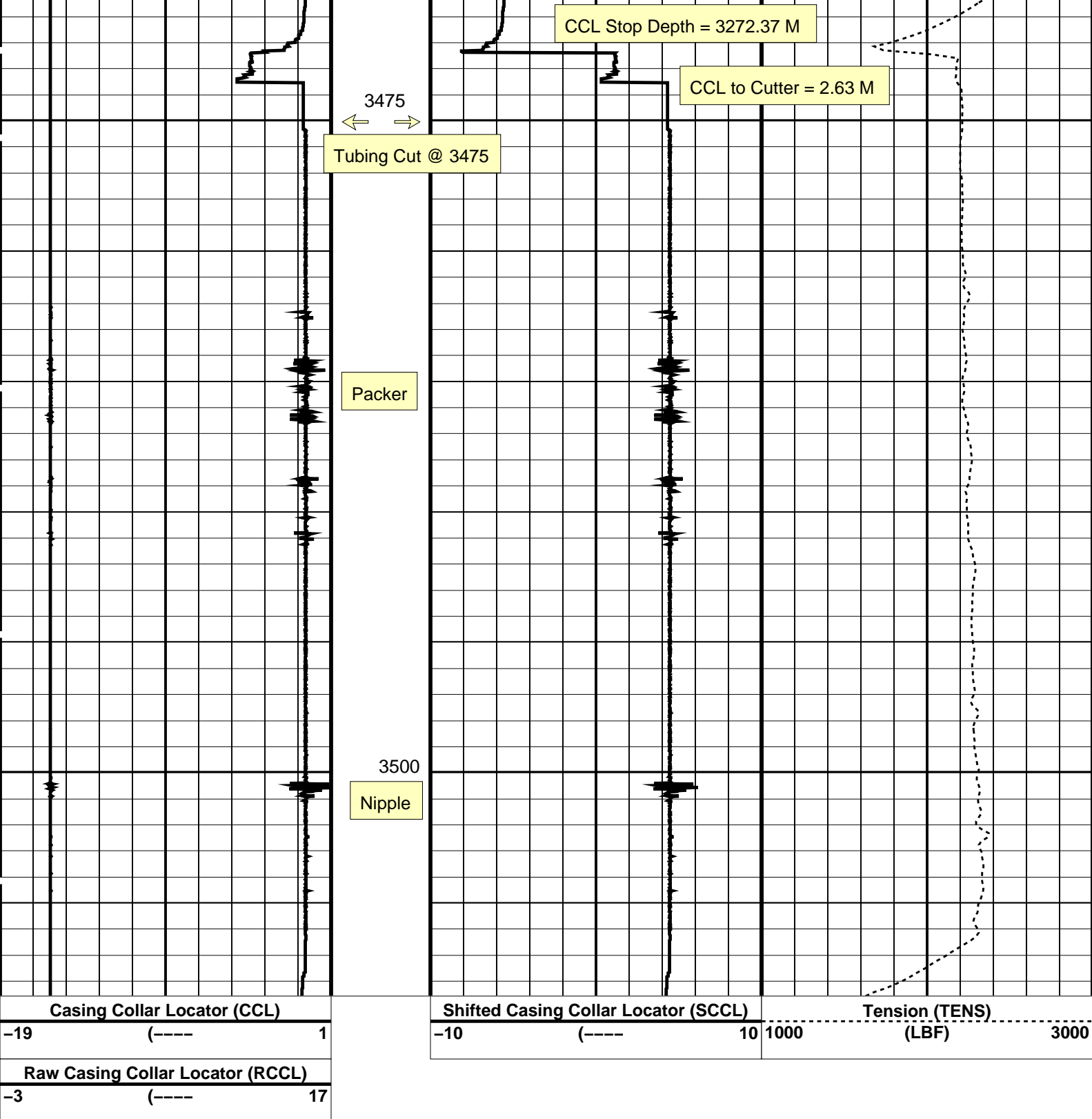
Shifted Casing Collar Locator (SCCL)

-10 (----) 10

Tension (TENS)

1000 (LBF) 3000





PIP SUMMARY		
Parameters		
DLIS Name	Description	Value
CCL-L	Casing Collar Locator	
CCLD	CCL reset delay	12 IN
CCLT	CCL Detection Level	0.3 V
Format: CCLLog Vertical Scale: 1:200		Graphics File Created: 22-Feb-2008 03:58
OP System Version: 16C0-147		
MCM		
SHM_GUN	16C0-147	CCL-L 16C0-147

Output DLIS Files

DEFAULT

PERFO_021LUP

FN:22

PRODUCER

22-Feb-2008 03:58

Schlumberger

3.65" Powercutter Correlation

MAXIS Field Log

Company: Esso Australia Pty Ltd.

Well: CBA F8

Output DLIS Files

DEFAULT

PERFO_020LUP

FN:21

PRODUCER

22-Feb-2008 03:46

3508.2 M

3451.6 M

OP System Version: 16C0-147

MCM

SHM_GUN

16C0-147

CCL-L

16C0-147

PIP SUMMARY

☒ Time Mark Every 60 S

Raw Casing Collar Locator (RCCL)

-3 (----) 17

Casing Collar Locator (CCL)

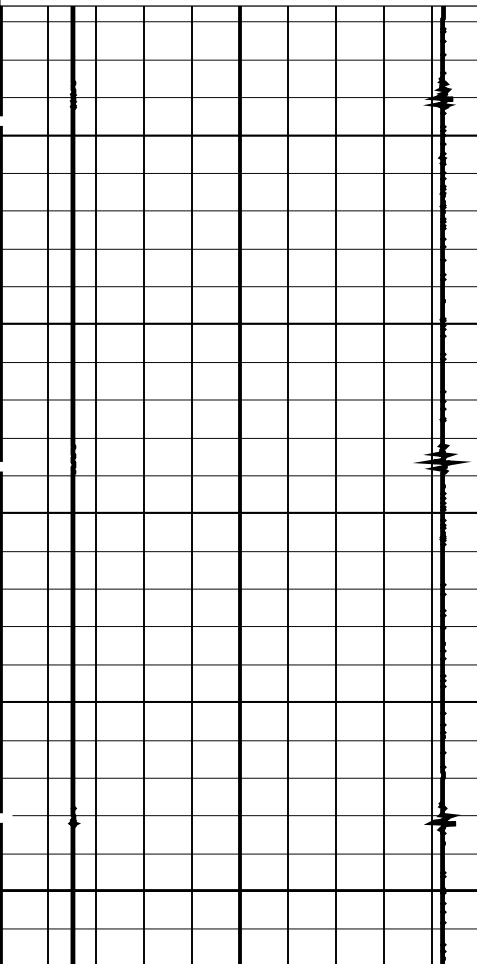
-19 (----) 1

Shifted Casing Collar Locator (SCCL)

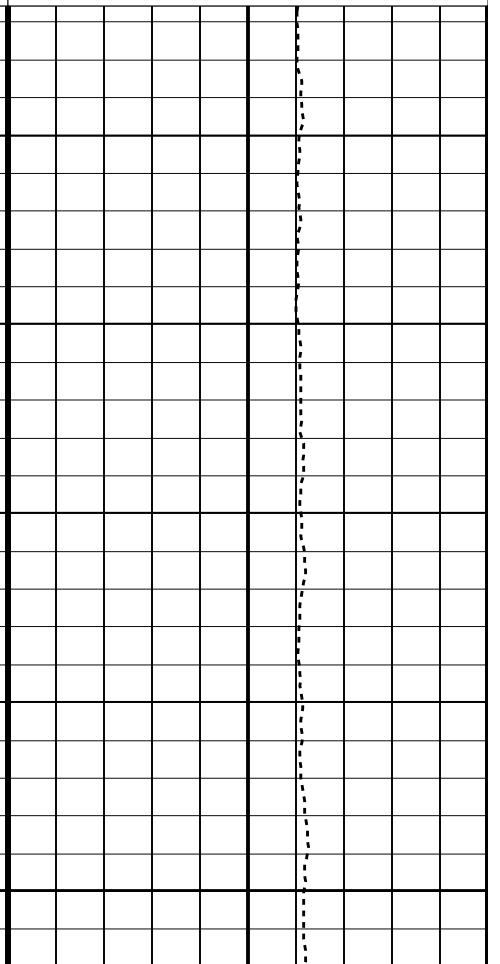
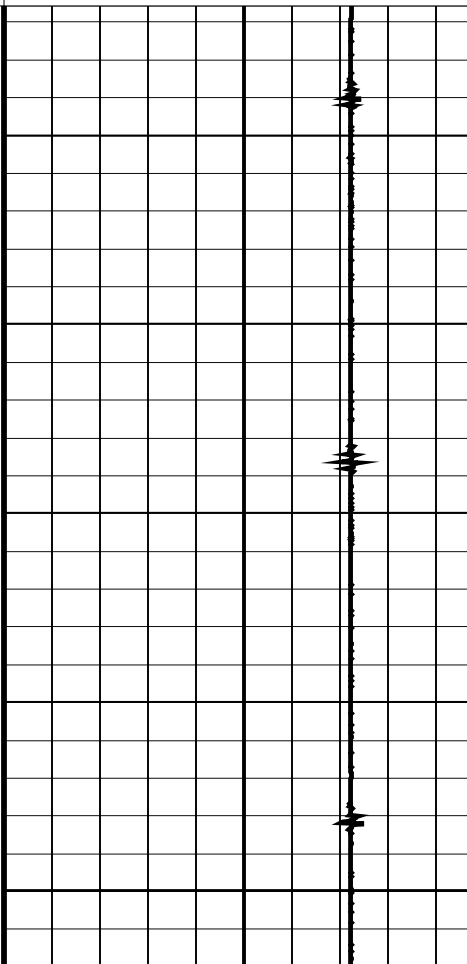
-10 (----) 10

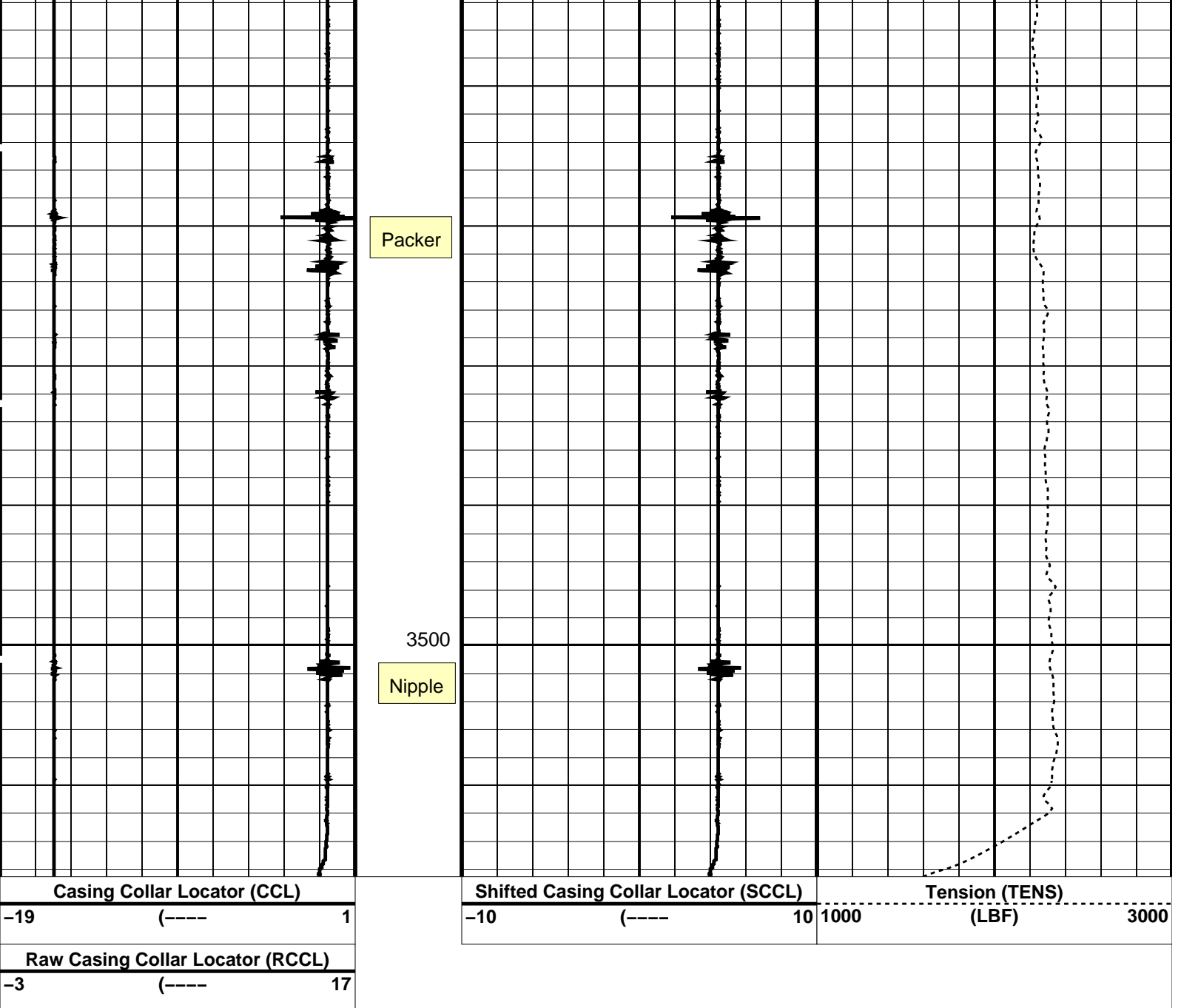
Tension (TENS)

(LBF) 1000 3000



3475





PIP SUMMARY

Time Mark Every 60 S

Parameters

DLIS Name	Description	Value
CCL-L: Casing Collar Locator		
CCLD	CCL reset delay	12 IN
CCLT	CCL Detection Level	0.3 V

Format: CCLLog Vertical Scale: 1:200

Graphics File Created: 22-Feb-2008 03:46

OP System Version: 16C0-147
MCM

SHM_GUN 16C0-147 CCL-L 16C0-147

Output DLIS Files

DEFAULT PERFO_020LUP FN:21 PRODUCER 22-Feb-2008 03:46

Company: Esso Australia Pty Ltd.

Well: CBA F8

Input DLIS Files

DEFAULT	PERFO_007LUP	FN:6	PRODUCER	21-Feb-2008 21:58	3508.1 M	3414.8 M
---------	--------------	------	----------	-------------------	----------	----------

Output DLIS Files

DEFAULT	PERFO_007PUP	FN:8	PRODUCER	21-Feb-2008 22:13	3515.7 M	3422.4 M
---------	--------------	------	----------	-------------------	----------	----------

OP System Version: 16C0-147

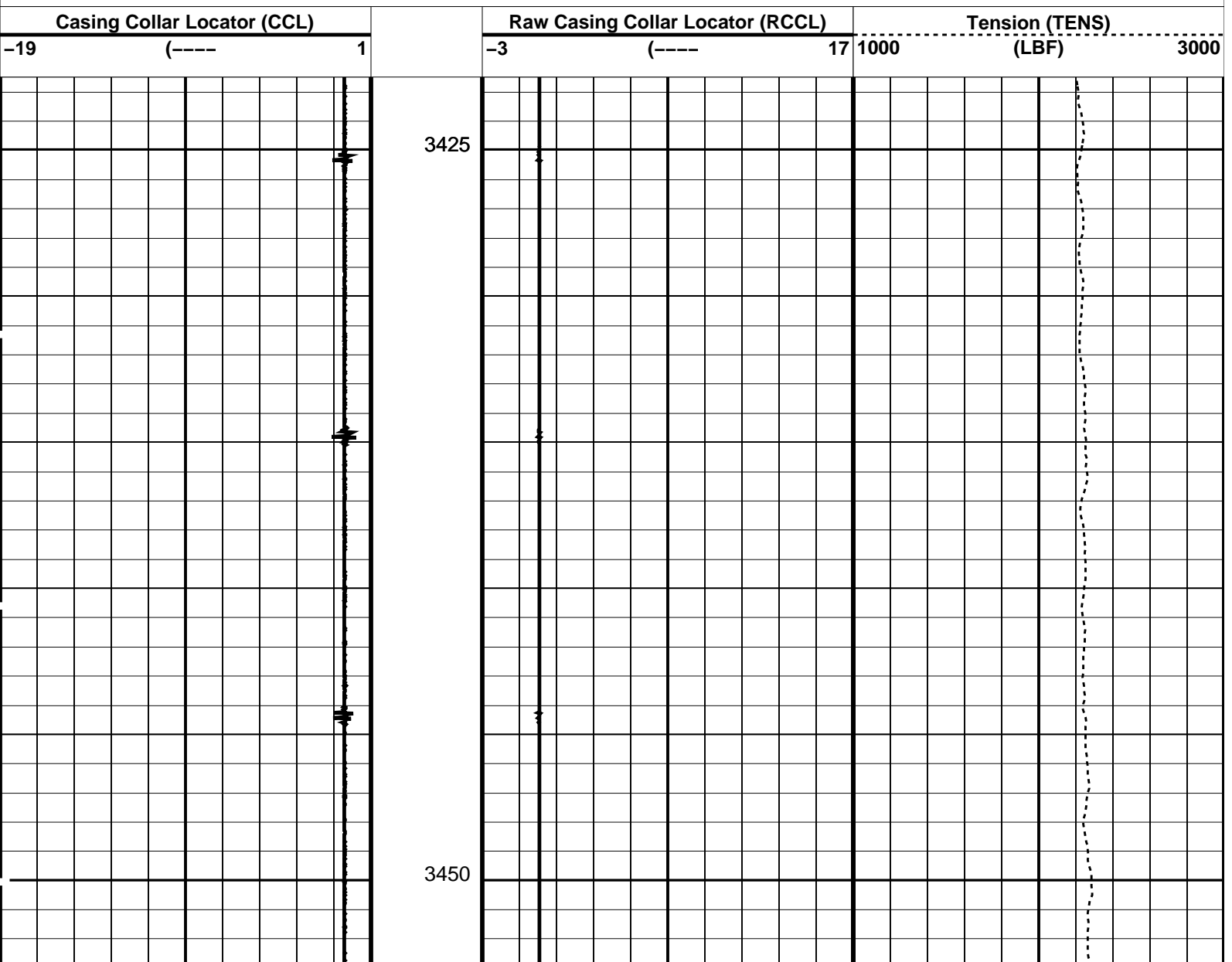
MCM

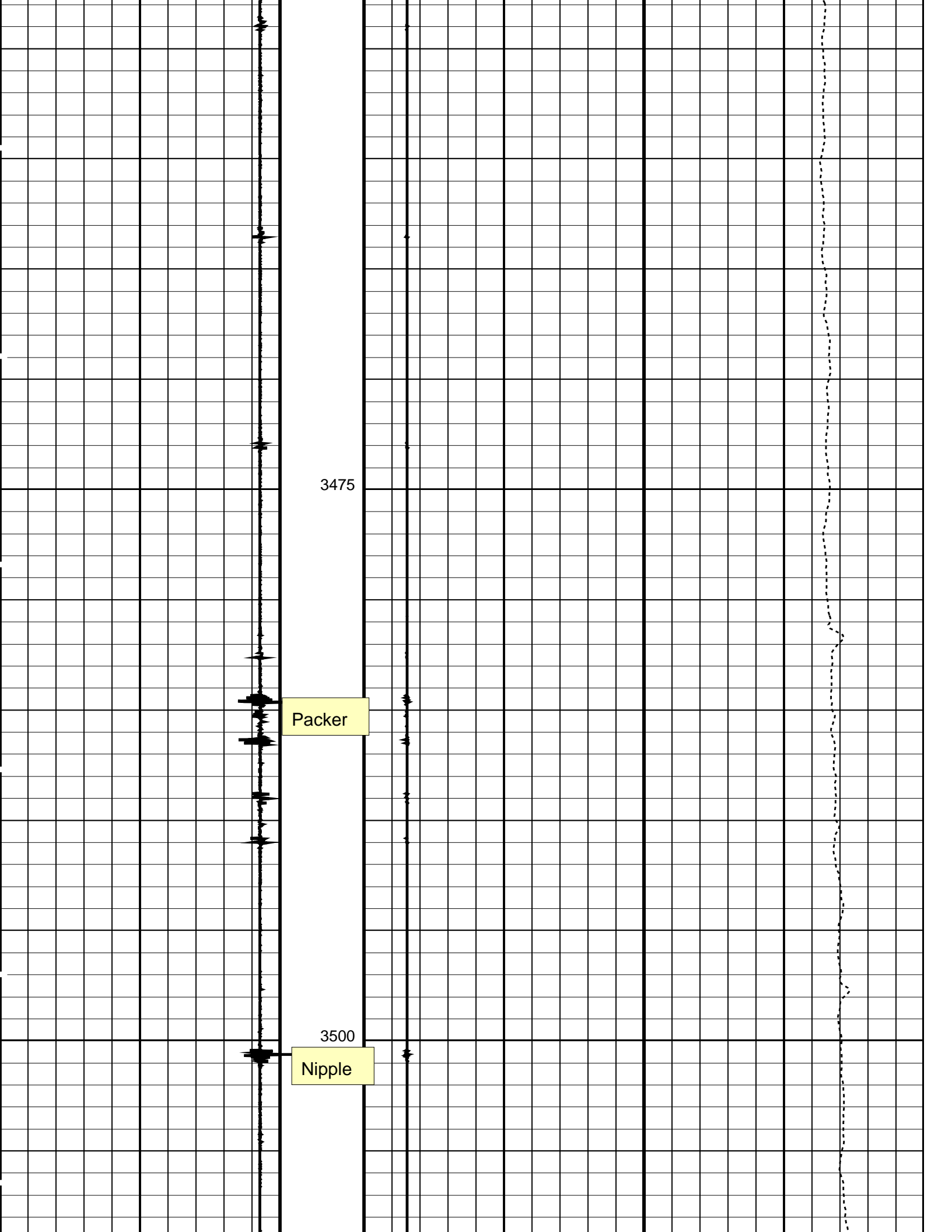
SHM_GUN	16C0-147	CCL-L	16C0-147
---------	----------	-------	----------

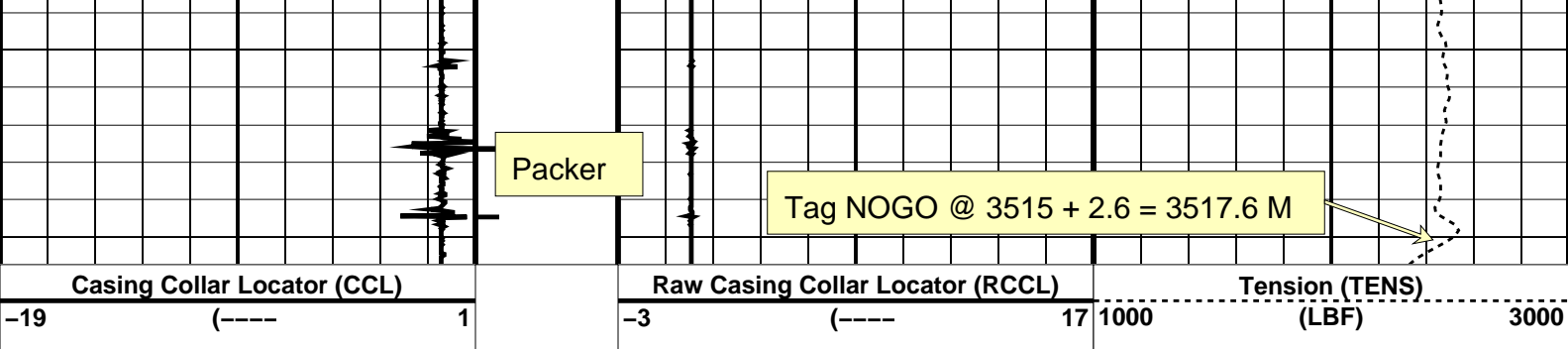
PIP SUMMARY

└─ Casing Collars

Time Mark Every 60 S







PIP SUMMARY

← Casing Collars

Time Mark Every 60 S

Parameters

DLIS Name	Description	Value
CCL-L: Casing Collar Locator		
CCLD	CCL reset delay	12 IN
CCLT	CCL Detection Level	0.3 V
System and Miscellaneous		
DO	Depth Offset for Playback	7.6 M
PP	Playback Processing	NORMAL

Format: CCLLog Vertical Scale: 1:200

Graphics File Created: 21-Feb-2008 22:13

OP System Version: 16C0-147

MCM

SHM_GUN 16C0-147 CCL-L 16C0-147

Input DLIS Files

DEFAULT PERFO_007LUP FN:6 PRODUCER 21-Feb-2008 21:58 3508.1 M 3414.8 M

Output DLIS Files

DEFAULT PERFO_007PUP FN:8 PRODUCER 21-Feb-2008 22:13

Company: **Esso Australia Pty Ltd.**

Schlumberger

Well: **CBA F8**
Field: **Cobia**
Rig: **ISS Rig 22**
Country: **Australia**

3.65" PowerCutter
Tubing Cut Record
22-Feb-2008