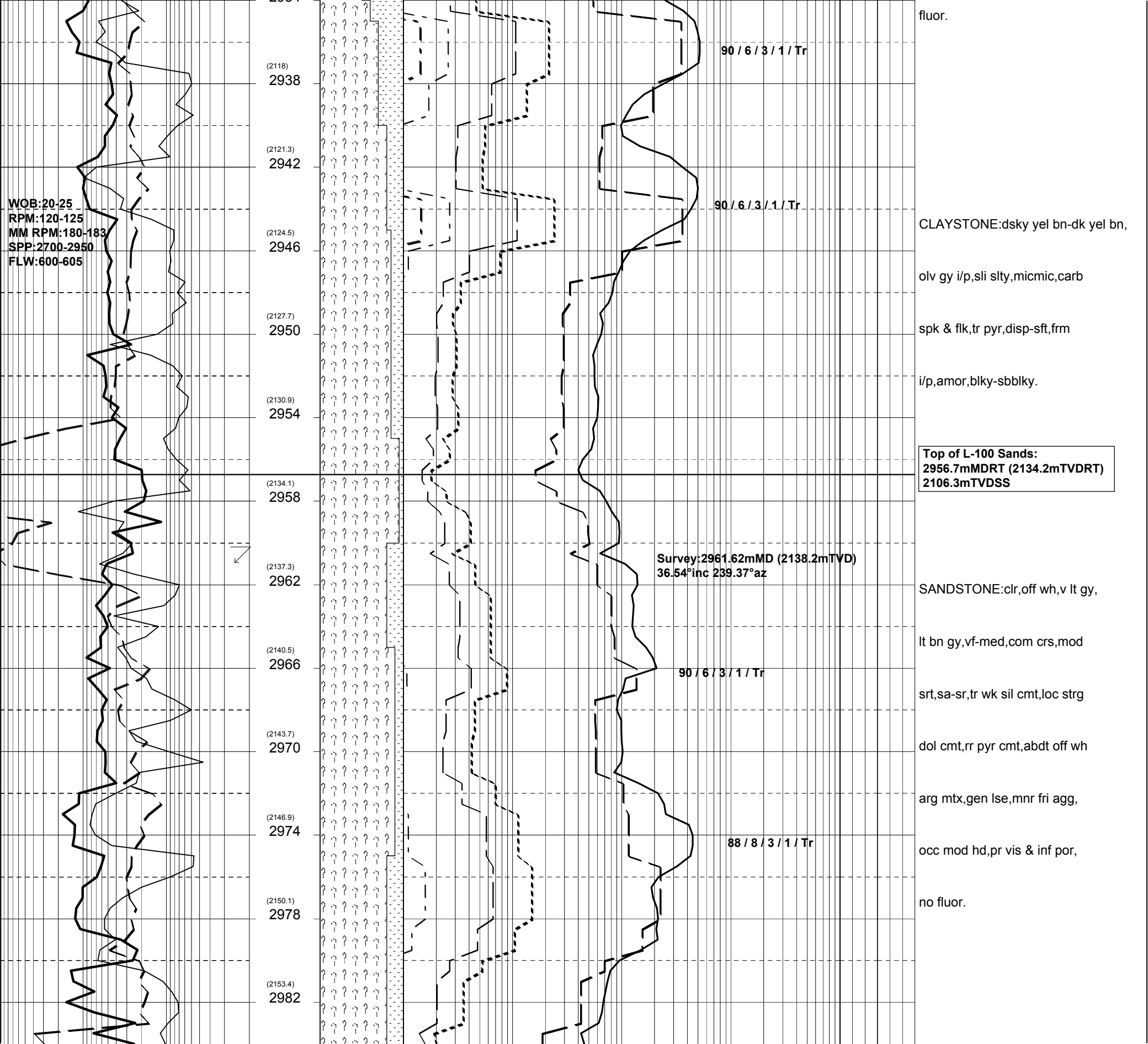
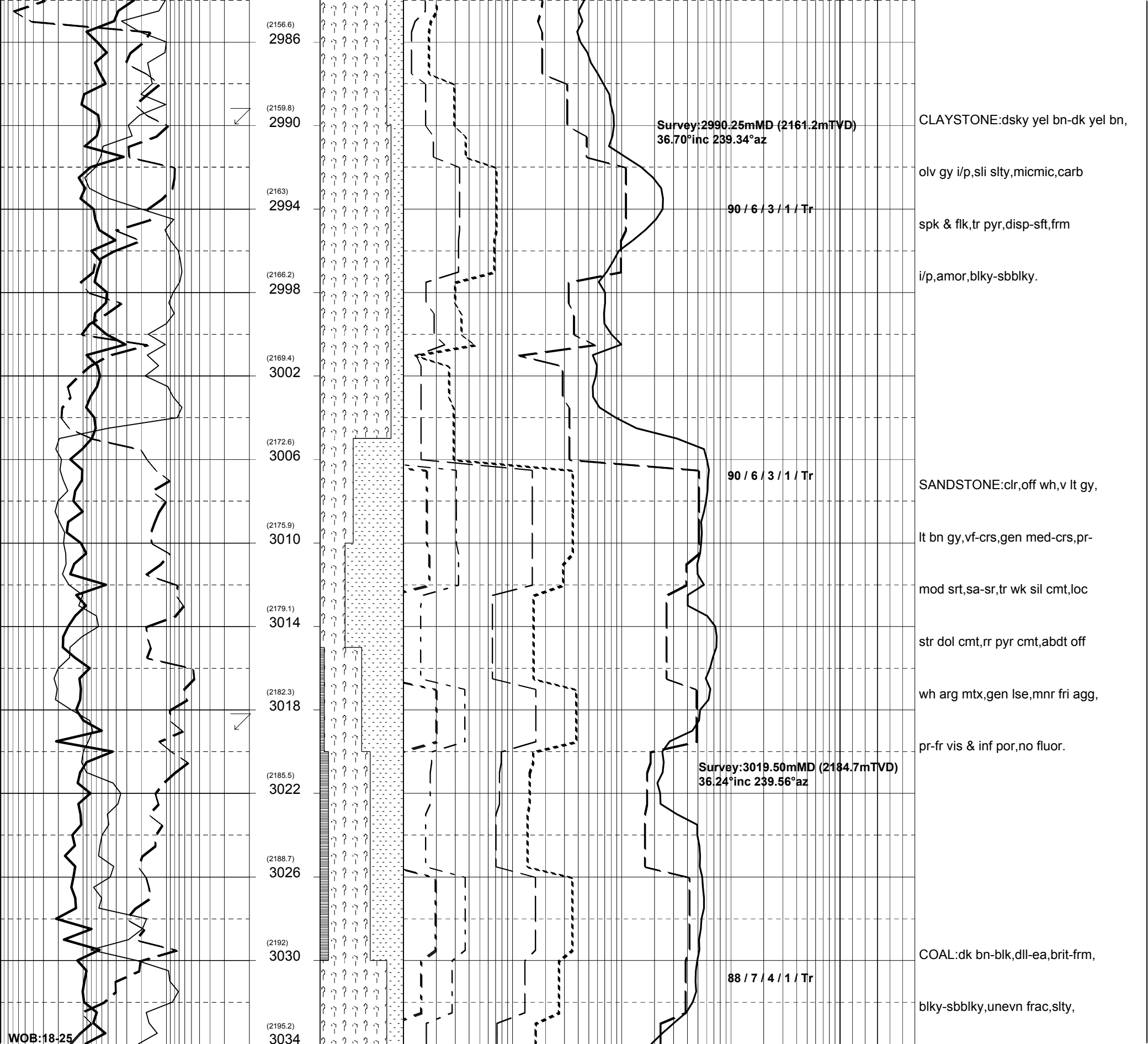


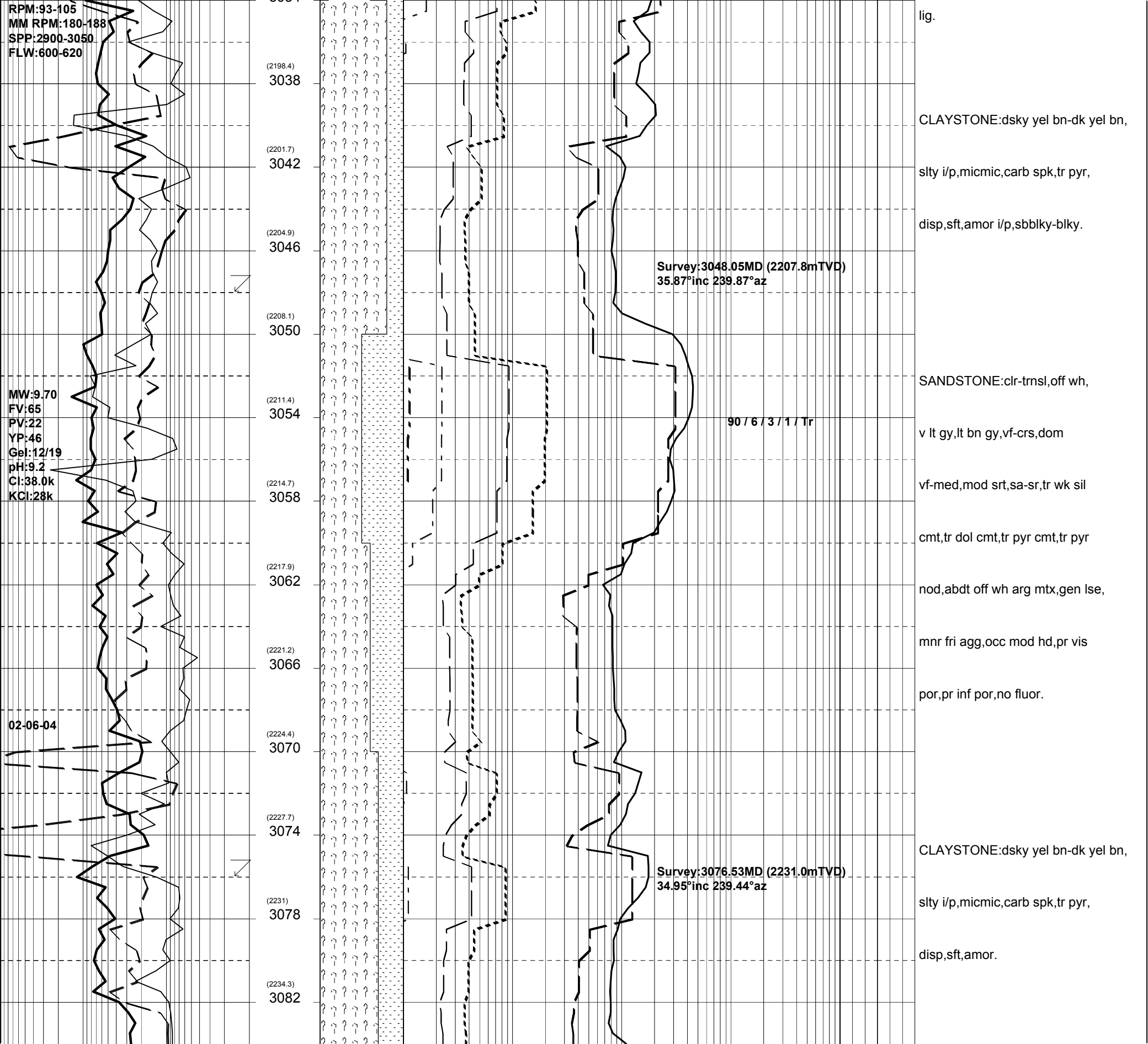
MW:9.70
FV:71
PV:25
YP:43
Gel:11/18
pH:8.8
Cl:39.0k
KCl:28k

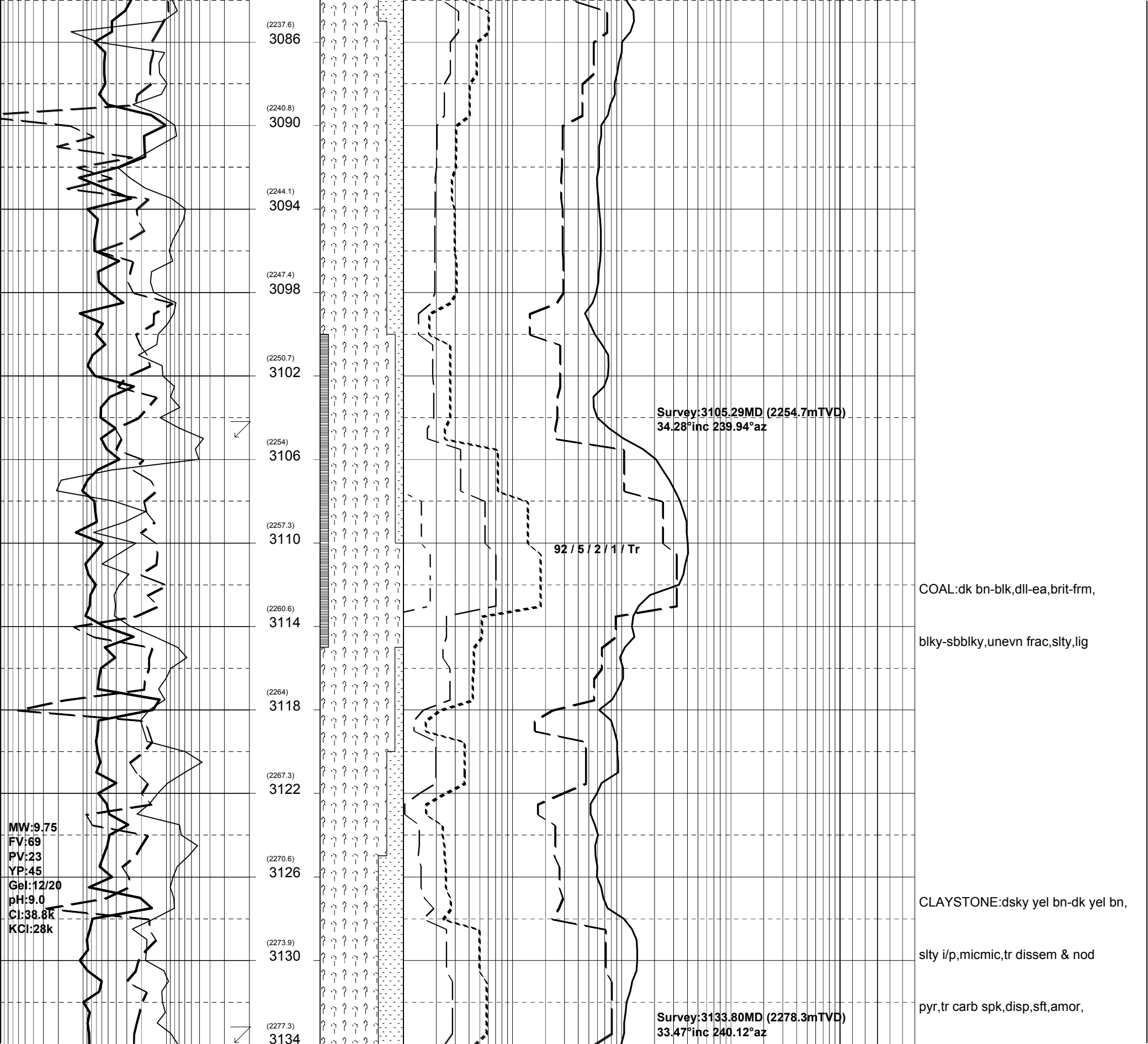
CLAYSTONE:dk yel bn-dsky yel bn,
bn gy i/p,slty i/p,micmic,com
carb spk,loc flk,rr carb lam,tr
dissem pyr,nod pyr,disp,sft-frm,
amor,sbblky-sbfiss.

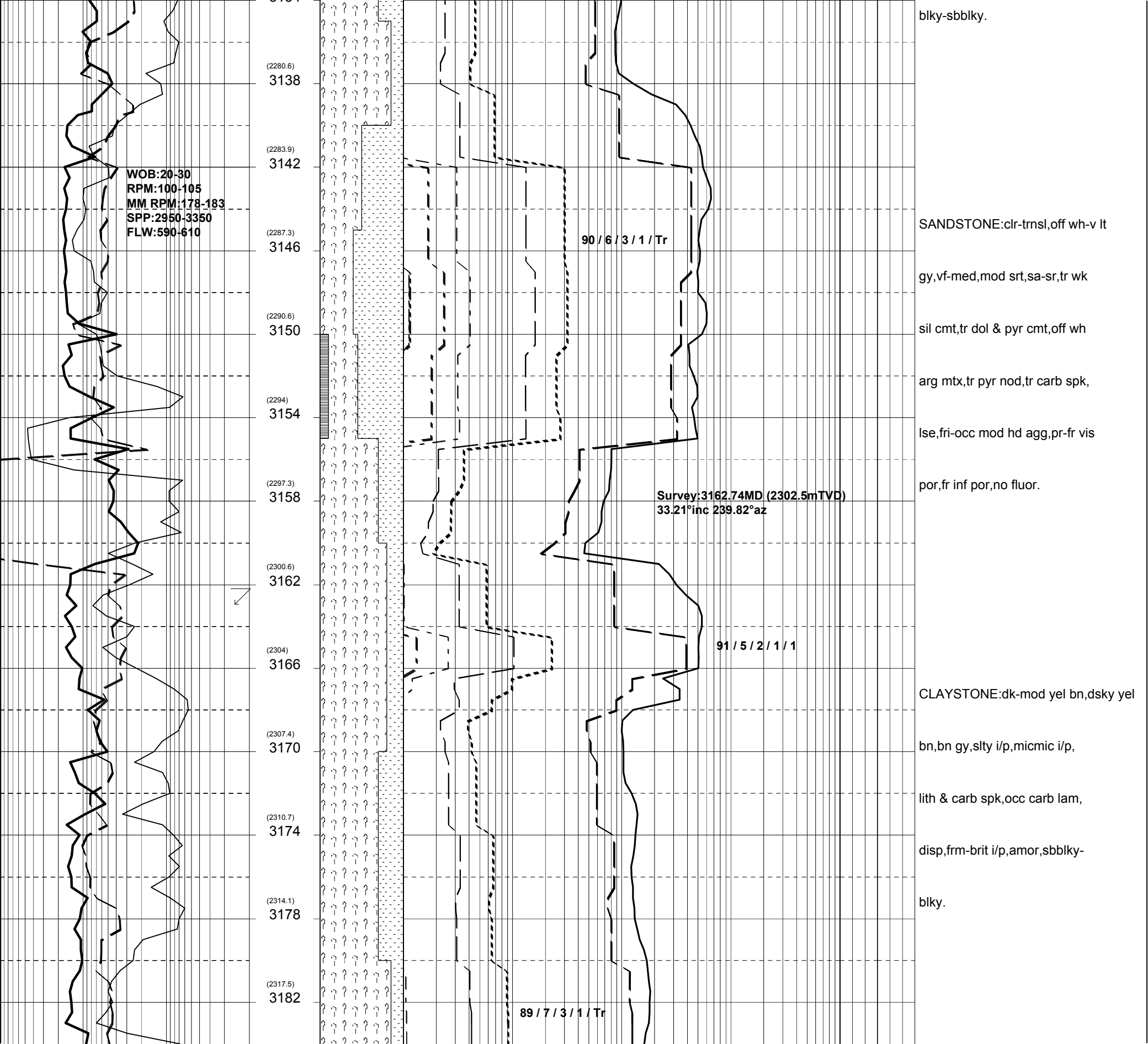
SANDSTONE:v lt gy-lt bn gy,clr-
trnsl,vf-med,com crs and slt
size grn,mod srt,sa-sr,tr wk sil
cmt,loc str dol cmt,tr pyr cmt,
off wh arg mtx,lse,fri-brit agg,
occ mod hd,pr vis & inf por,no

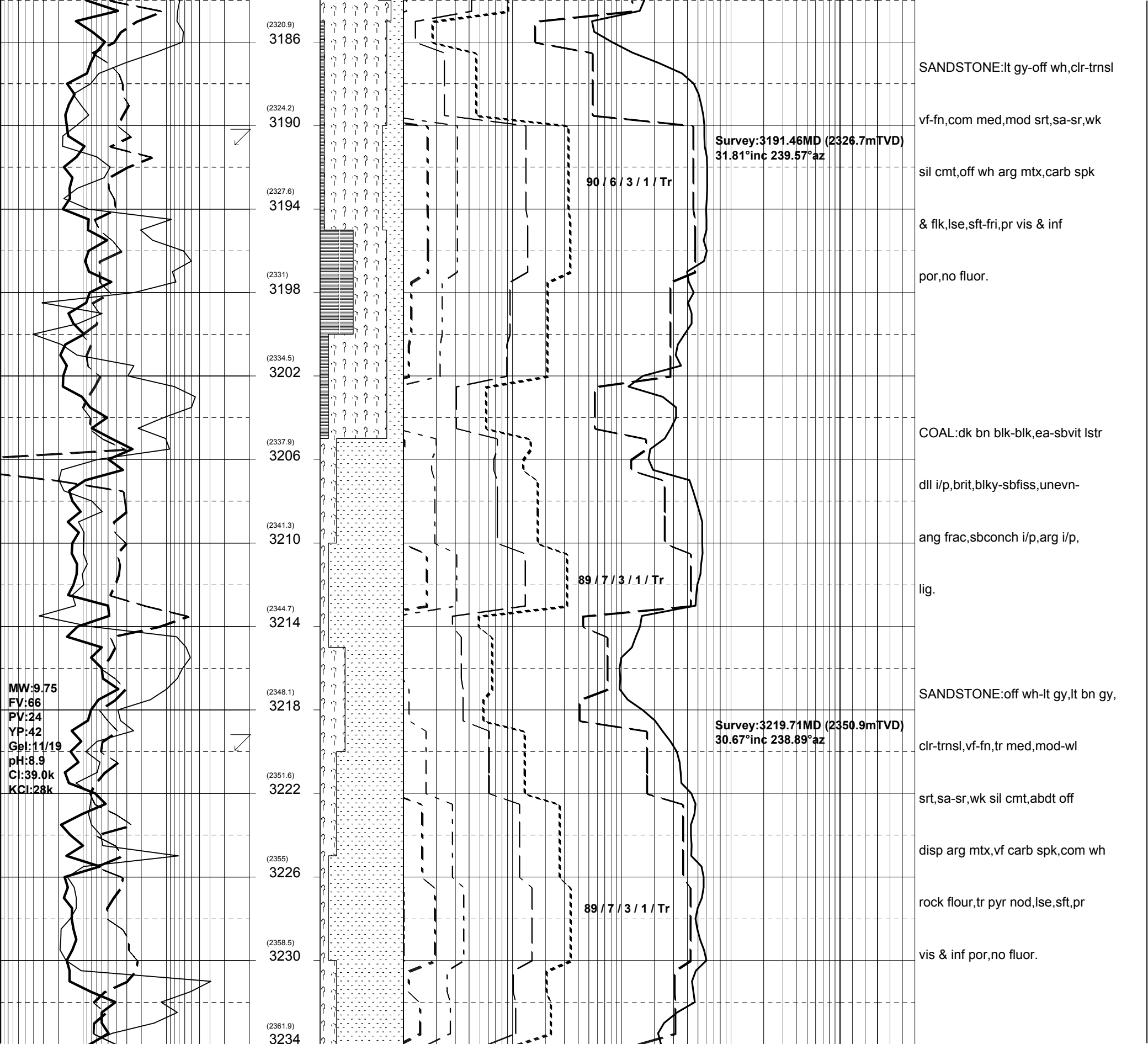


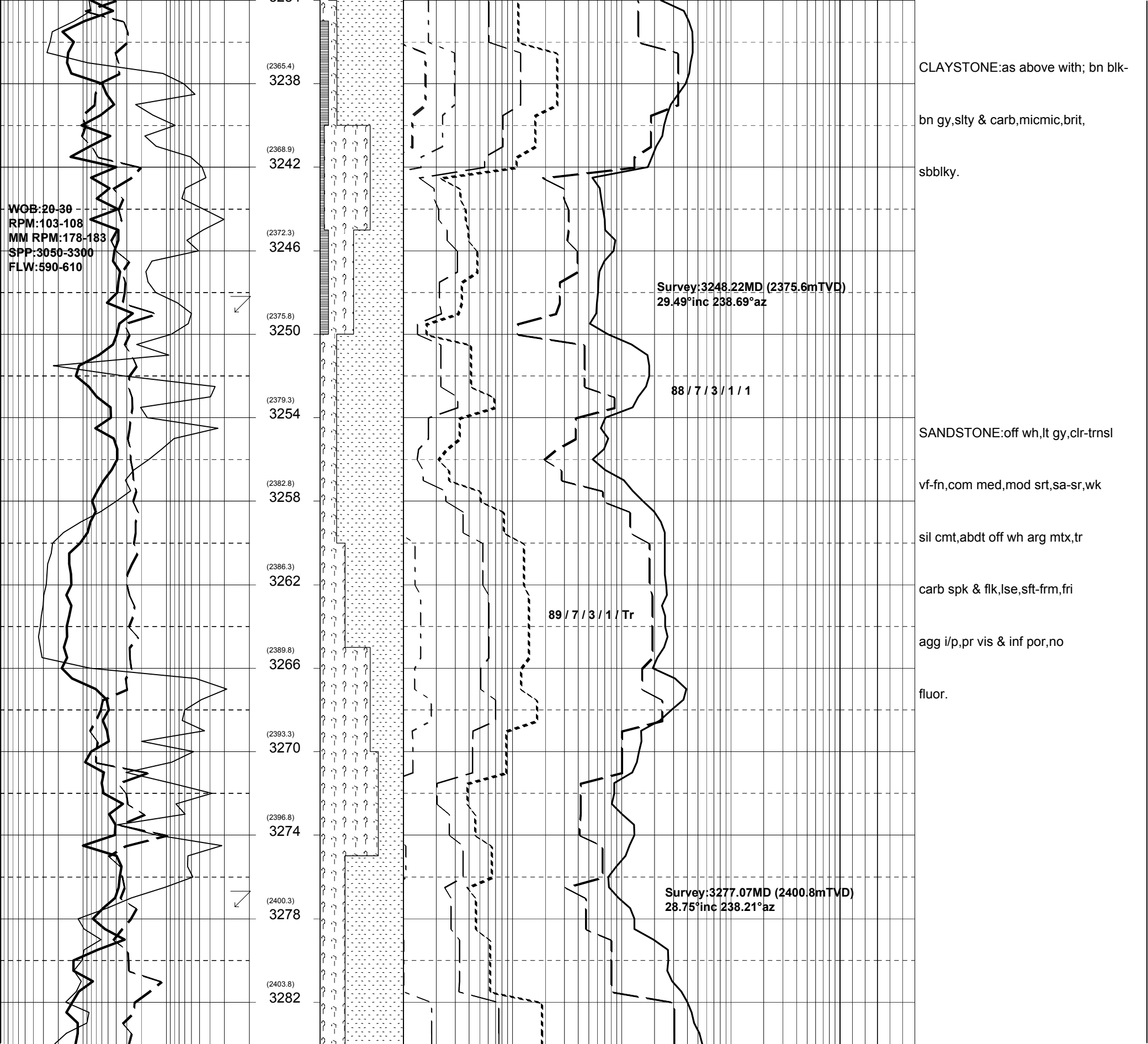


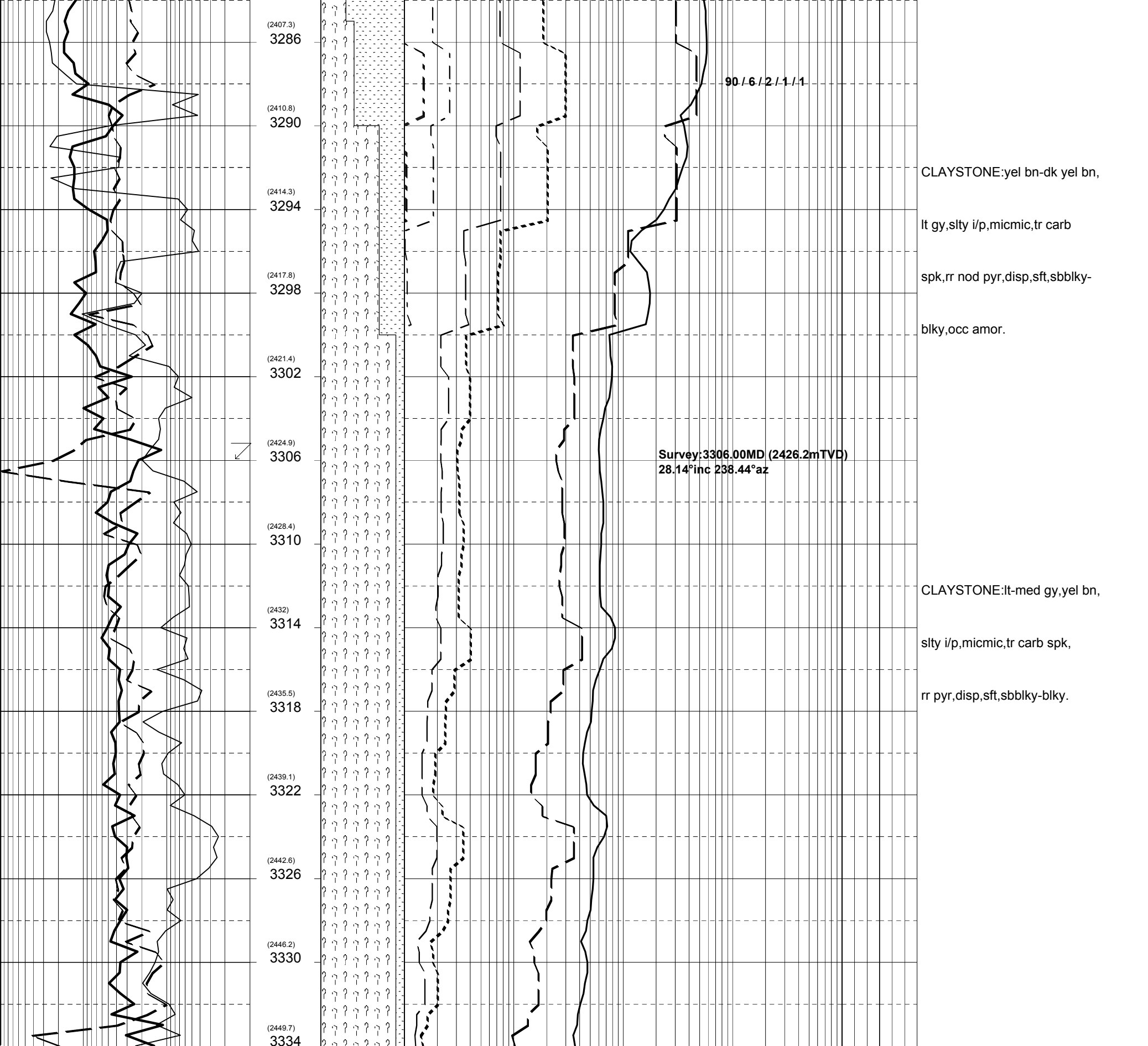


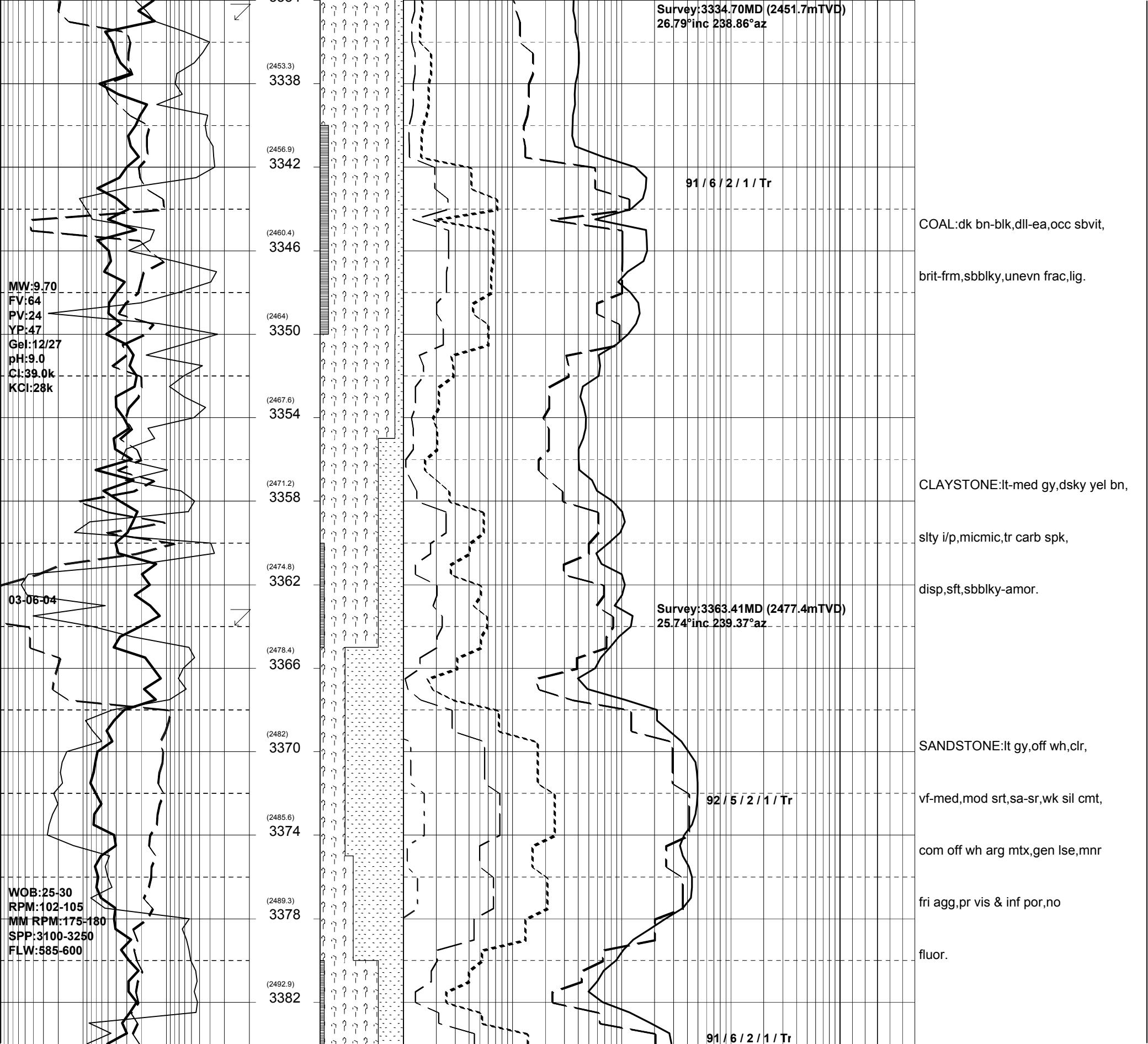


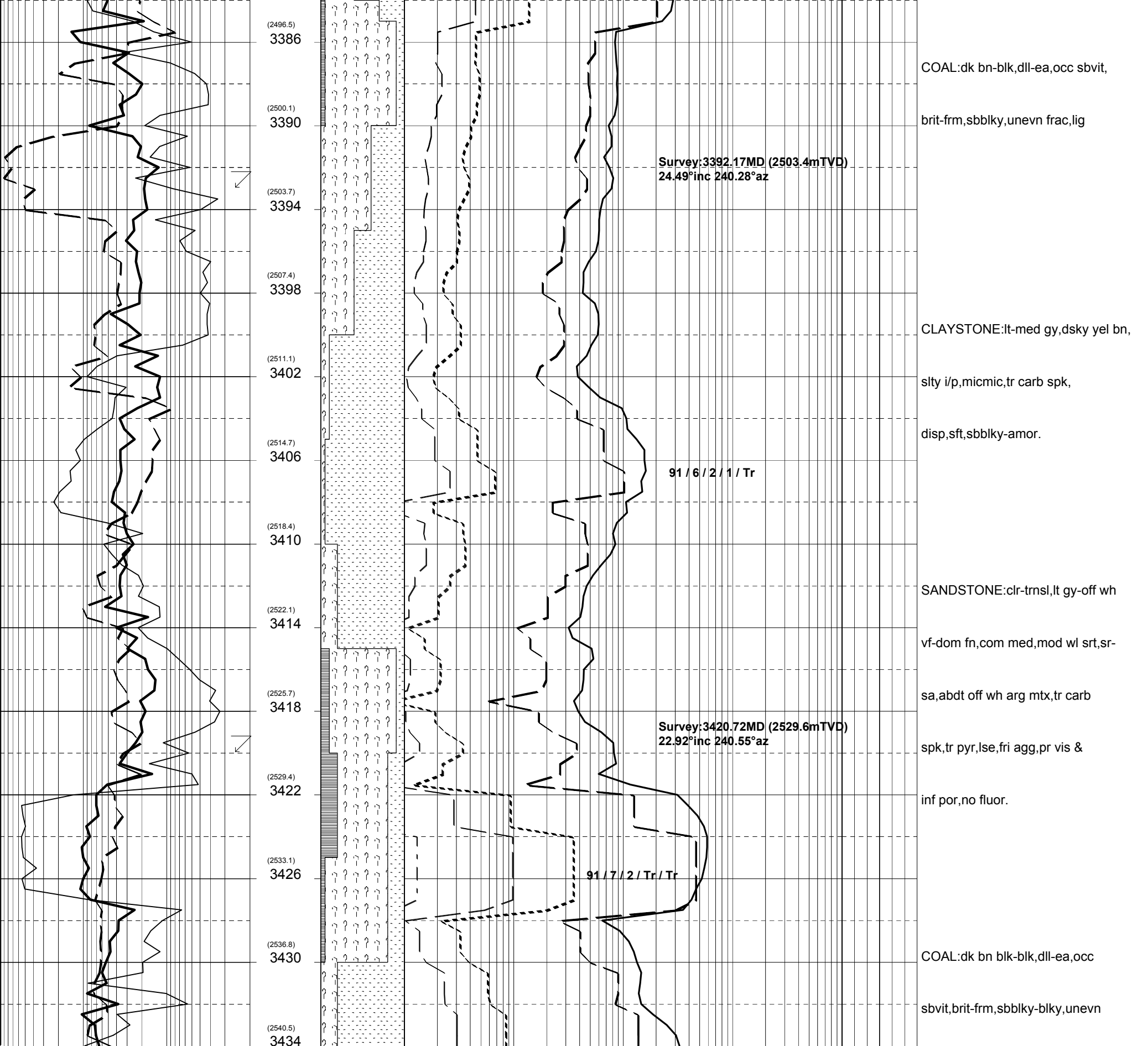


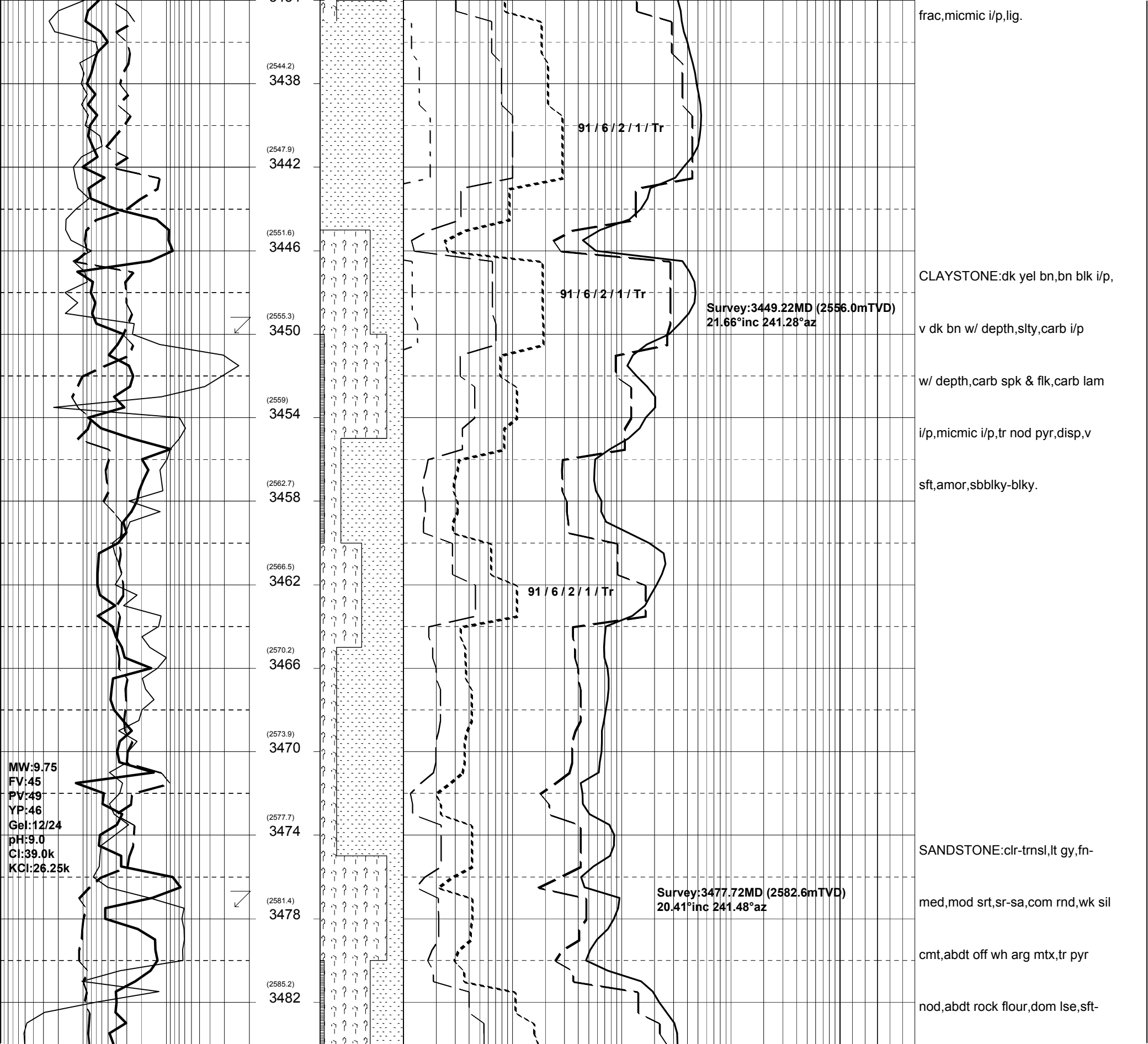


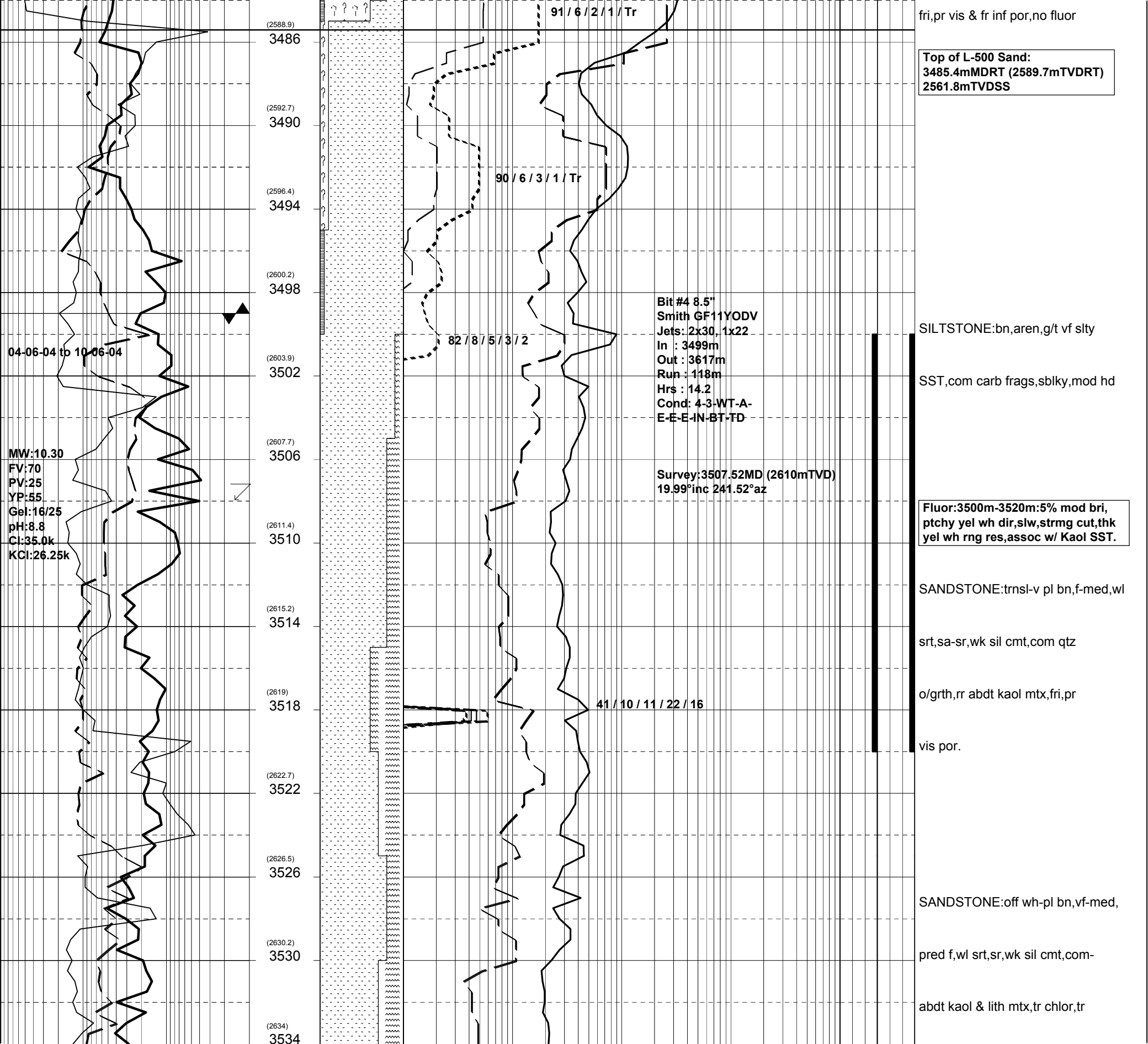


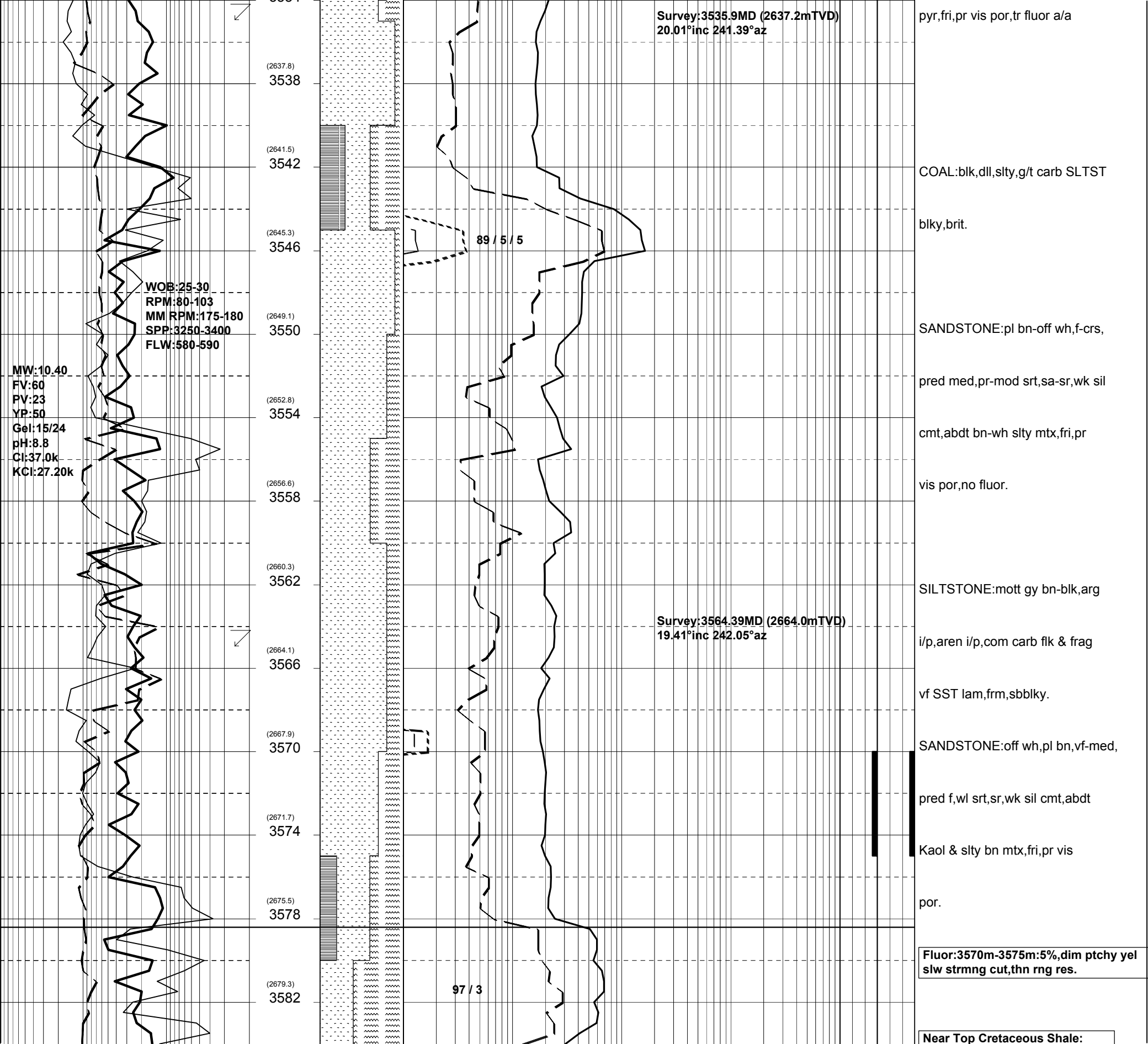


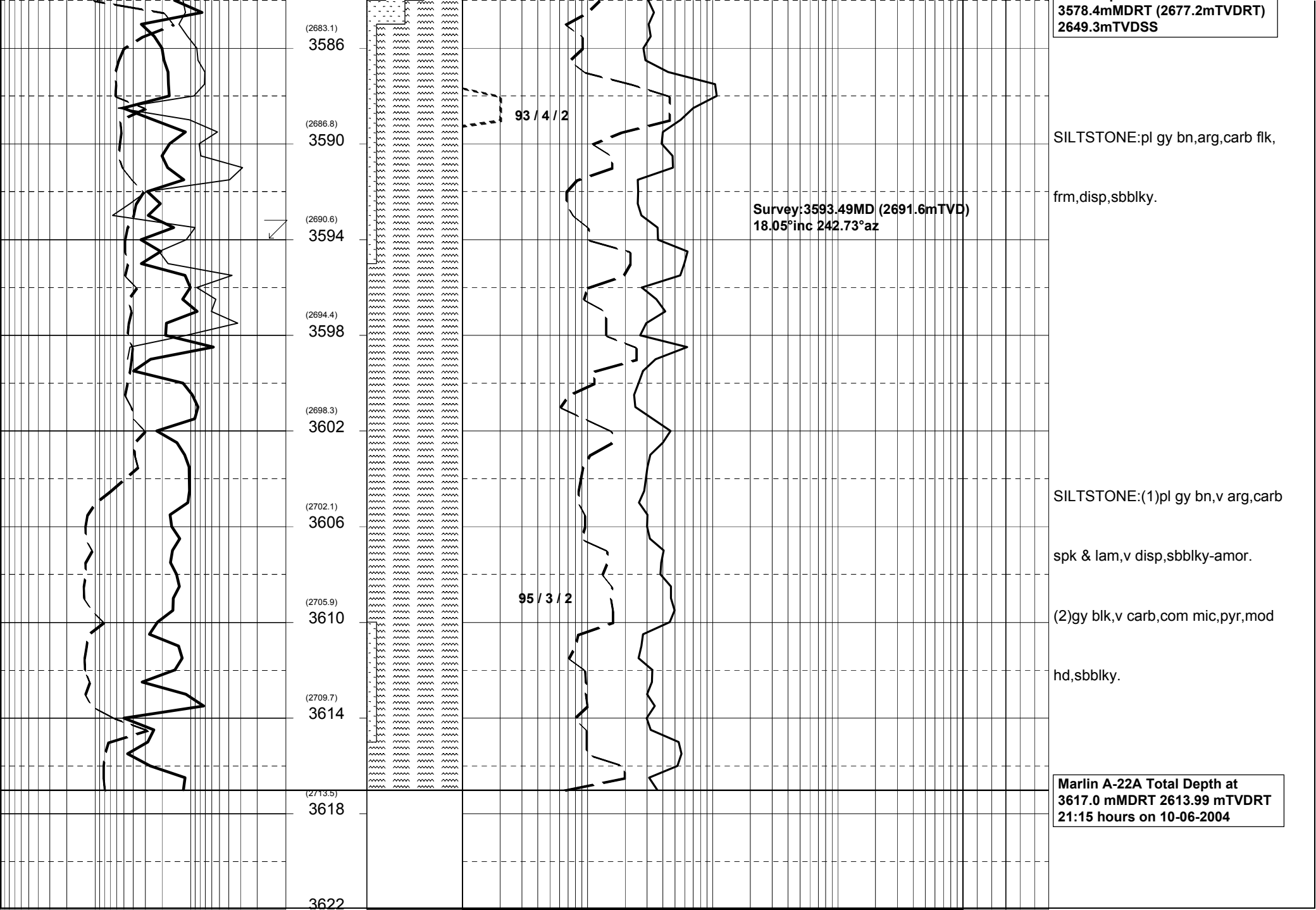












3578.4mMDRT (2677.2mTVDRT)
2649.3mTVDSS

SILTSTONE:pl gy bn,arg,carb flk,
frm,disp,sbblky.

Survey:3593.49MD (2691.6mTVD)
18.05°inc 242.73°az

SILTSTONE:(1)pl gy bn,v arg,carb
spk & lam,v disp,sbblky-amor.
(2)gy blk,v carb,com mic,pyr,mod
hd,sbblky.

Marlin A-22A Total Depth at
3617.0 mMDRT 2613.99 mTVDRT
21:15 hours on 10-06-2004