



Company: Esso Australia Pty Ltd.

Well: A-23  
Field: Hailbut  
Rig: Crane

Country: Australia

2 1/8" Phased  
Powerjet Mwpt  
Perforation

Rig: Crane  
Field: Halibut  
Location: Gippsland  
Well: A-23  
Company: Esso Australia Pty Ltd.

LOCATION			Elev.: K.B. 29.45 m G.L. -73 m D.F. 29.45 m
Gippsland			
Basin			
Bass Strait			
Permanent Datum:	M.S.L.	Elev.: 0 m	
Log Measured From:	K.B.	29.5 m above Perm. Datum	
Drilling Measured From:	K.B.		
State: Victoria	Max. Well Deviation 26 deg	Longitude 148 19'07.62"E	Latitude 038 24'20.36"S

28-Dec-2007

One

2585 m

2580 m

2580 m

2525 m

Production Fluids

Logging Date

Run Number

Depth Driller

Schlumberger Depth

Bottom Log Interval

Top Log Interval

Casing Fluid Type

Salinity

Density

Fluid Level

BIT/CASING/TUBING STRING

Bit Size

From

To

Casing/Tubing Size

Weight

Grade

From

To

Maximum Recorded Temperatures

Logger On Bottom

Unit Number

Recorded By

Witnessed By

Logging Date

Run Number

Depth Driller

Schlumberger Depth

Bottom Log Interval

Top Log Interval

Casing Fluid Type

Salinity

Density

Fluid Level

BIT/CASING/TUBING STRING

Bit Size

From

To

Casing/Tubing Size

Weight

Grade

From

To

Maximum Recorded Temperatures

Logger On Bottom

Unit Number

Recorded By

Witnessed By

Run 1

Oil Density  
Water Salinity  
Gas Gravity  
Bo

Bw  
1/Bg  
Bubble Point Pressure  
Bubble Point Temperature  
Solution GOR

Maximum Deviation

CEMENTING DATA

Primary/Squeeze

Casing String No

Lead Cement Type

Volume  
Density  
Water Loss  
Additives

Tail Cement Type

Volume

Density

Water Loss

Additives

Expected Cement Top

Logging Date

Run Number

Depth Driller

Schlumberger Depth

Bottom Log Interval

Top Log Interval

Casing Fluid Type

Salinity

Density

Fluid Level

BIT/CASING/TUBING STRING

Bit Size

From

To

Casing/Tubing Size

Weight

Grade

From

To

Maximum Recorded Temperatures

Logger On Bottom

Unit Number

Recorded By

Witnessed By

Logging Date

Run Number

Depth Driller

Schlumberger Depth

Bottom Log Interval

Top Log Interval

Casing Fluid Type

Salinity

Density

Fluid Level

BIT/CASING/TUBING STRING

Bit Size

From

To

Casing/Tubing Size

Weight

Grade

From

To

Maximum Recorded Temperatures

Logger On Bottom

Unit Number

Recorded By

Witnessed By

Logging Date

Run Number

Depth Driller

Schlumberger Depth

Bottom Log Interval

Top Log Interval

Casing Fluid Type

Salinity

Density

Fluid Level

BIT/CASING/TUBING STRING

Bit Size

From

To

Casing/Tubing Size

Weight

Grade

From

To

Maximum Recorded Temperatures

Logger On Bottom

Unit Number

Recorded By

Witnessed By

Logging Date

Run Number

Depth Driller

Schlumberger Depth

Bottom Log Interval

Top Log Interval

Casing Fluid Type

Salinity

Density

Fluid Level

BIT/CASING/TUBING STRING

Bit Size

From

To

Casing/Tubing Size

Weight

Grade

From

To

Maximum Recorded Temperatures

Logger On Bottom

Unit Number

Recorded By

Witnessed By

Logging Date

Run Number

Depth Driller

Schlumberger Depth

Bottom Log Interval

Top Log Interval

Casing Fluid Type

Salinity

Density

Fluid Level

BIT/CASING/TUBING STRING

Bit Size

From

To

Casing/Tubing Size

Weight

Grade

From

To

Maximum Recorded Temperatures

Logger On Bottom

Unit Number

Recorded By

Witnessed By

Logging Date

Run Number

Depth Driller

Schlumberger Depth

Bottom Log Interval

Top Log Interval

Casing Fluid Type

Salinity

Density

Fluid Level

BIT/CASING/TUBING STRING

Bit Size

From

To

Casing/Tubing Size

Weight

Grade

From

To

Maximum Recorded Temperatures

Logger On Bottom

Unit Number

Recorded By

Witnessed By

Logging Date

Run Number

Depth Driller

Schlumberger Depth

Bottom Log Interval

Top Log Interval

Casing Fluid Type

Salinity

Density

Fluid Level

BIT/CASING/TUBING STRING

Bit Size

From

To

Casing/Tubing Size

Weight

Grade

From

To

Maximum Recorded Temperatures

Logger On Bottom

Unit Number

Recorded By

Witnessed By

Logging Date

Run Number

Depth Driller

Schlumberger Depth

Bottom Log Interval

Top Log Interval

Casing Fluid Type

Salinity

Density

Fluid Level

BIT/CASING/TUBING STRING

Bit Size

From

To

Casing/Tubing Size

Weight

Grade

From

To

Maximum Recorded Temperatures

Logger On Bottom

Unit Number

Recorded By

Witnessed By

Logging Date

Run Number

Depth Driller

Schlumberger Depth

Bottom Log Interval

Top Log Interval

Casing Fluid Type

Salinity

Density

Fluid Level

BIT/CASING/TUBING STRING

Bit Size

From

To

Casing/Tubing Size

Weight

Grade

From

To

Maximum Recorded Temperatures

Logger On Bottom

Unit Number

Recorded By

Witnessed By

Logging Date

Run Number

Depth Driller

Schlumberger Depth

Bottom Log Interval

Top Log Interval

Casing Fluid Type

Salinity

Density

Fluid Level

BIT/CASING/TUBING STRING

Bit Size

</

## DEPTH SUMMARY LISTING

Date Created: 26-DEC-2007 14:24:33

### Depth System Equipment

Depth Measuring Device		Tension Device		Logging Cable	
Type:	IDW-EB	Type:	PSDS/OSDS	Type:	2-32ZT
Serial Number:	6373	Serial Number:	325357	Serial Number:	24425
Calibration Date:	04-Jan-2007	Calibration Date:	26-Dec-2007.	Length:	5584.85 M
Calibrator Serial Number:	9	Calibrator Serial Number:	1174	Conveyance Method: Wireline Rig Type: Rigless	
Calibration Cable Type:	2-32ZT	Calibration Gain:	0.88		
Wheel Correction 1:	-2	Calibration Offset:	176.00		
Wheel Correction 2:	-4				

### Depth Control Parameters

Log Sequence:	Subsequent Trip To the Well
Reference Log Name: ExxonMobil petrophysical analysis	

### Depth Control Remarks

1. IDW used as primary depth control.
2. Z-chart used as back-up.

#### DISCLAIMER

THE USE OF AND RELIANCE UPON THIS RECORDED-DATA BY THE HEREIN NAMED COMPANY (AND ANY OF ITS AFFILIATES, PARTNERS, REPRESENTATIVES, AGENTS, CONSULTANTS AND EMPLOYEES) IS SUBJECT TO THE TERMS AND CONDITIONS AGREED UPON BETWEEN SCHLUMBERGER AND THE COMPANY, INCLUDING: (a) RESTRICTIONS ON USE OF THE RECORDED-DATA; (b) DISCLAIMERS AND WAIVERS OF WARRANTIES AND REPRESENTATIONS REGARDING COMPANY'S USE OF AND RELIANCE UPON THE RECORDED-DATA; AND (c) CUSTOMER'S FULL AND SOLE RESPONSIBILITY FOR ANY INFERENCE DRAWN OR DECISION MADE IN CONNECTION WITH THE USE OF THIS RECORDED-DATA.

OTHER SERVICES <sup>1</sup>
OS1: None






REMARKS: RUN NUMBER 1
Log correlated to ExxonMobil composite supplied with program.
Maximum well deviation = 26 degrees at 2555m MDKB.
2 1/8" Phased Powerjet at 6spf used for this perforation.
Zone perforated was 2557m to 2557.5m MDKB.
SBHP = 2527 psia.
SBHT = 227.9 degf.
After firing the gun :

SBHP = 3197 psia.  
SBHT = 229 degf.  
The well was not flowed for a clean up flow due to tool  
restriction re-entering tubing string.

Crew: J Light & N Simmons.

RUN 1		
SERVICE ORDER #:	AusI07336270	
PROGRAM VERSION:	14C0-302	
FLUID LEVEL:		
LOGGED INTERVAL	START	STOP

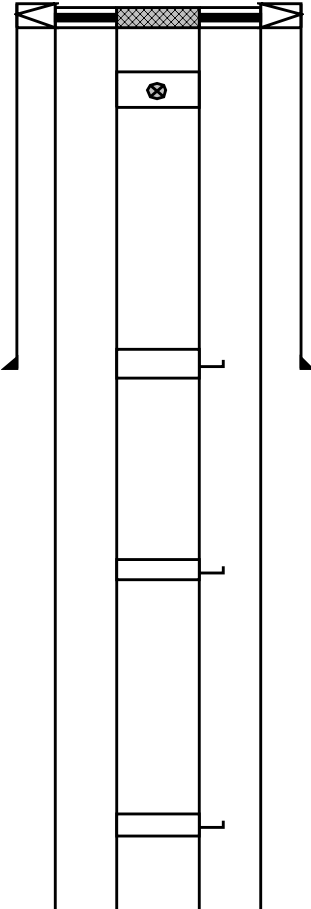
EQUIPMENT DESCRIPTION

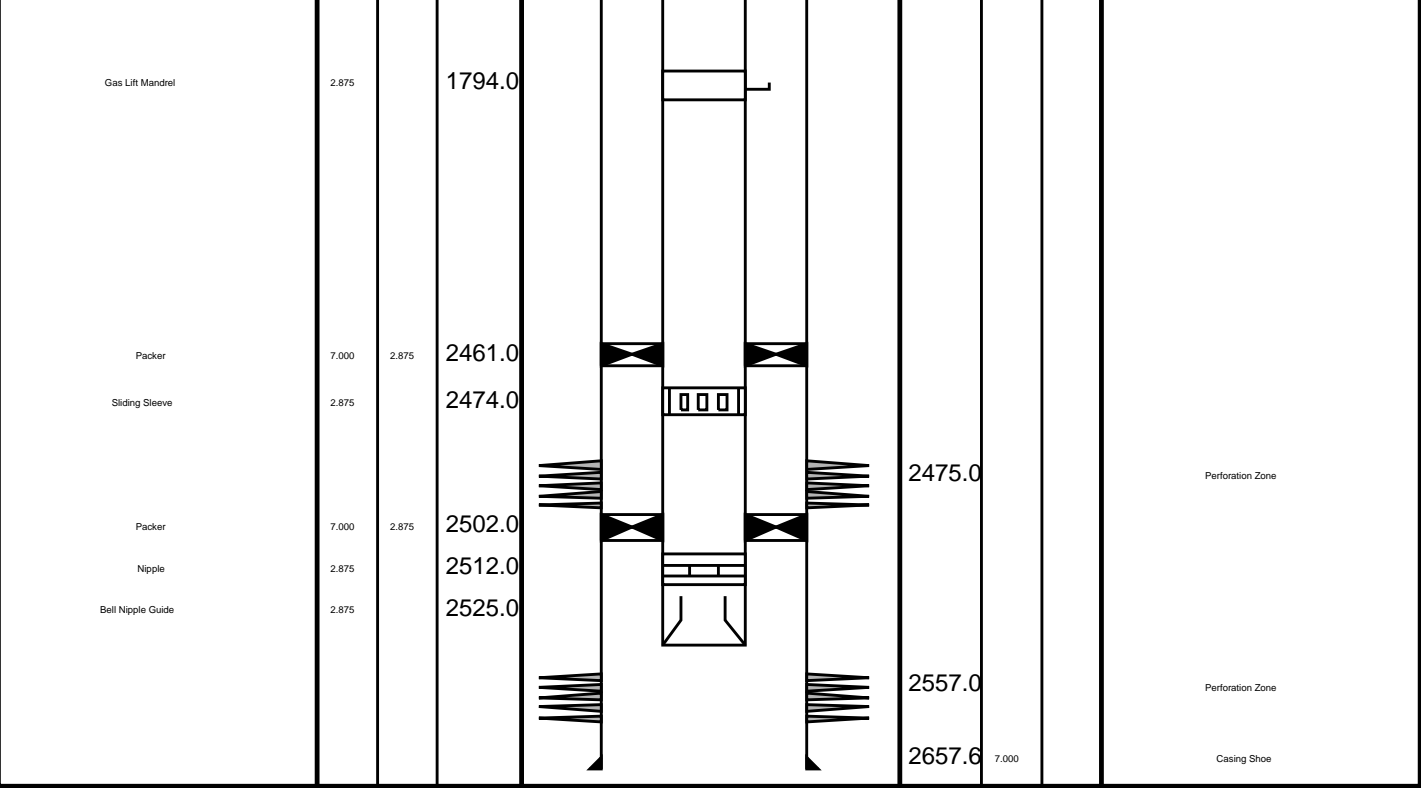
RUN 1		
SURFACE EQUIPMENT		
MWPM-AA 3008		
DOWNHOLE EQUIPMENT		
MH-SWHS-A 754 MH-SWHS-A 754		11.21
EQF-43 EQF-43 6001		10.88
EQF-43 EQF-43		9.06
MWGT-AA BLK2 MWPG-AA 24029 MWGH-AA 69		7.23
MWPG GR		2.41
MWPT-CA BLK2 MWPH-AA 74 MWPS-AA 74		6.25
CCL SMWP Pres SMWP Temp Tension		TOOL ZERO

AH-121 41 AH-121 41	3.43
SAH-G 1035 SAH-G 1035	2.97
MPD-MB 268 MPD-MB 268	2.49
AH-ESIC AH-ESIC 1406002	2.03
MWP_GUN GUN-0.5 mtr Powerjet Gun 1	1.52

TOOL BOTTOM

MAXIMUM STRING DIAMETER 2.13 IN  
MEASUREMENTS RELATIVE TO TOOL ZERO  
ALL LENGTHS IN METERS

Production String	(in)		(m)	Well Schematic	(m)	(in)		Casing String
	OD	ID	MD		MD	OD	ID	
Tubing Hanger Tubing	7.000	2.875	10.0		13.5	7.000		Casing String Liner Hanger
	2.875		11.3		13.5		7.000	
Shutin Valve		2.875	138.0					
Gas Lift Mandrel		2.875	668.0		622.0	9.625		Casing Shoe
Gas Lift Mandrel		2.875	1047.0					
Gas Lift Mandrel		2.875	1498.0					

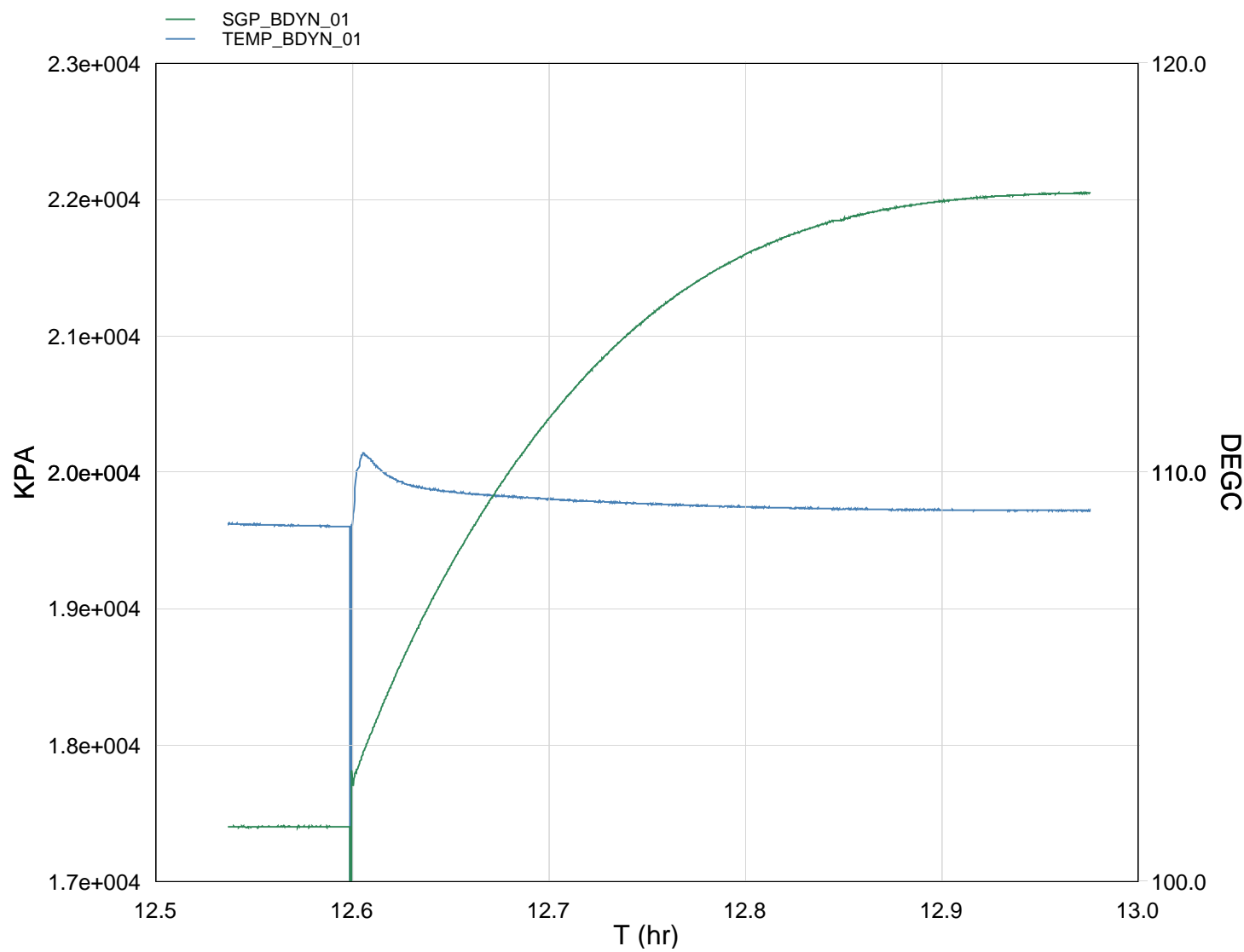


# Job Event Summary

MAXIS Field Log

## Schlumberger Job Event Summary

Time	Elapsed Time	Depth (M)	File
Simulated Log	28-Dec-2007 10:13 000:23		PERFO_010LUP
Station Log	28-Dec-2007 10:22 000:14	12110.9 - 2.1	PERFO_011LTP
Log Pass (down)	28-Dec-2007 11:26 000:37	299.8 - 2582.6	PERFO_013LDP
Log Pass (up)	28-Dec-2007 12:05 000:06	2582.6 - 2544.0	PERFO_014LUP
Log Pass (up)	28-Dec-2007 12:15 000:08	2590.0 - 2551.6	PERFO_015LUP
Log Pass (up)	28-Dec-2007 12:27 000:34	2577.7 - 2532.6	PERFO_016LUP
Station Log	28-Dec-2007 12:32 000:27	2553.6 - 4.0	PERFO_017LTP
Log Pass (up)	28-Dec-2007 13:01 000:54	2530.8 - 311.1	PERFO_018LUP



TIME	DEGF	PSIA
5700.0	228.34	3198.280
5640.0	228.32	3197.093
5580.0	228.32	3195.803
5520.0	228.34	3193.798
5460.0	228.36	3190.843
5400.0	228.36	3186.141
5340.0	228.38	3180.684
5280.0	228.39	3172.890
5220.0	228.42	3163.789
5160.0	228.43	3151.996

5100.0	228.45	3137.950
5100.0	228.47	3137.004
5040.0	228.51	3119.541
4980.0	228.55	3098.193
4920.0	228.61	3073.062
4860.0	228.67	3043.517
4800.0	228.74	3009.192
4740.0	228.81	2970.199
4680.0	228.88	2925.236
4620.0	229.00	2875.249
4560.0	229.10	2818.742
4500.0	229.27	2754.872
4440.0	229.72	2682.022
4380.0	230.72	2597.415
4320.0	227.66	2524.074
4260.0	227.66	2524.100
4200.0	227.69	2524.121
4140.0	227.73	2523.704

Schlumberger

Shooting Pass

MAXIS Field Log

Company: Esso Australia Pty Ltd. Well: A-23

Output DLIS Files

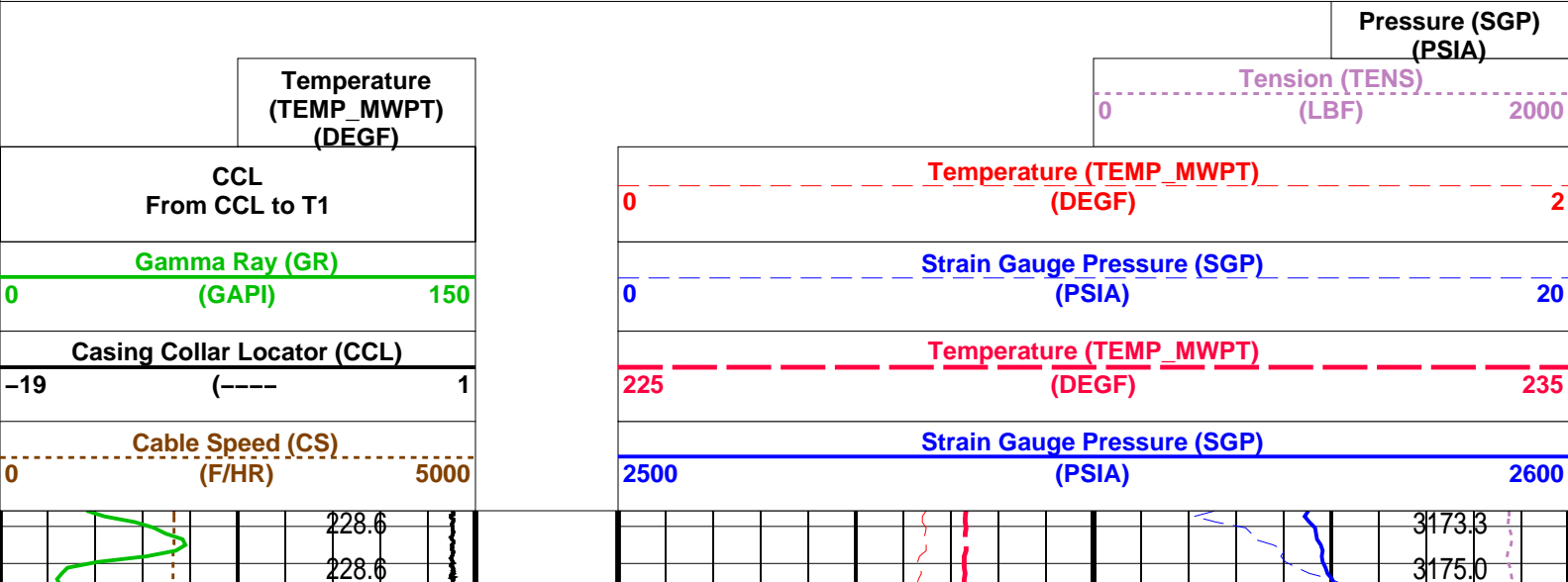
DEFAULT PERFO\_016LUP FN:15 PRODUCER 28-Dec-2007 12:27 2577.7 M 2532.6 M

OP System Version: 14C0-302  
MCM

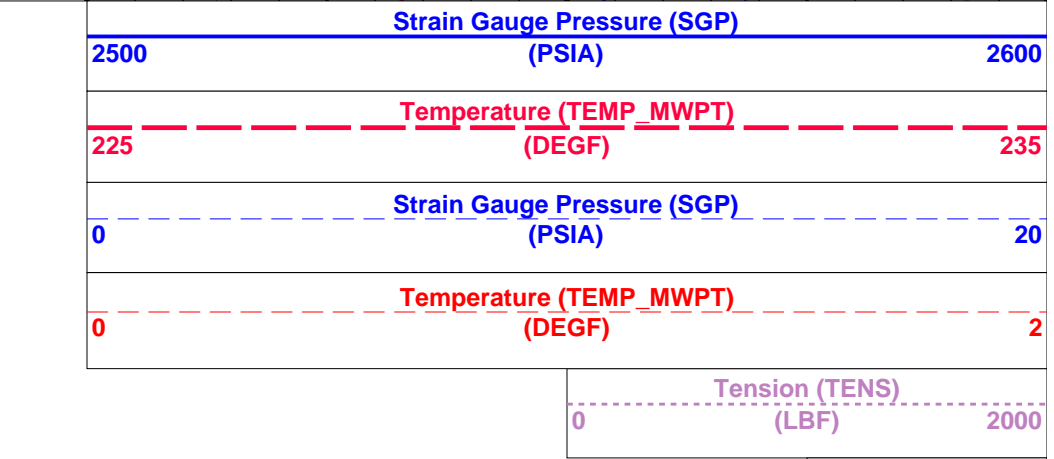
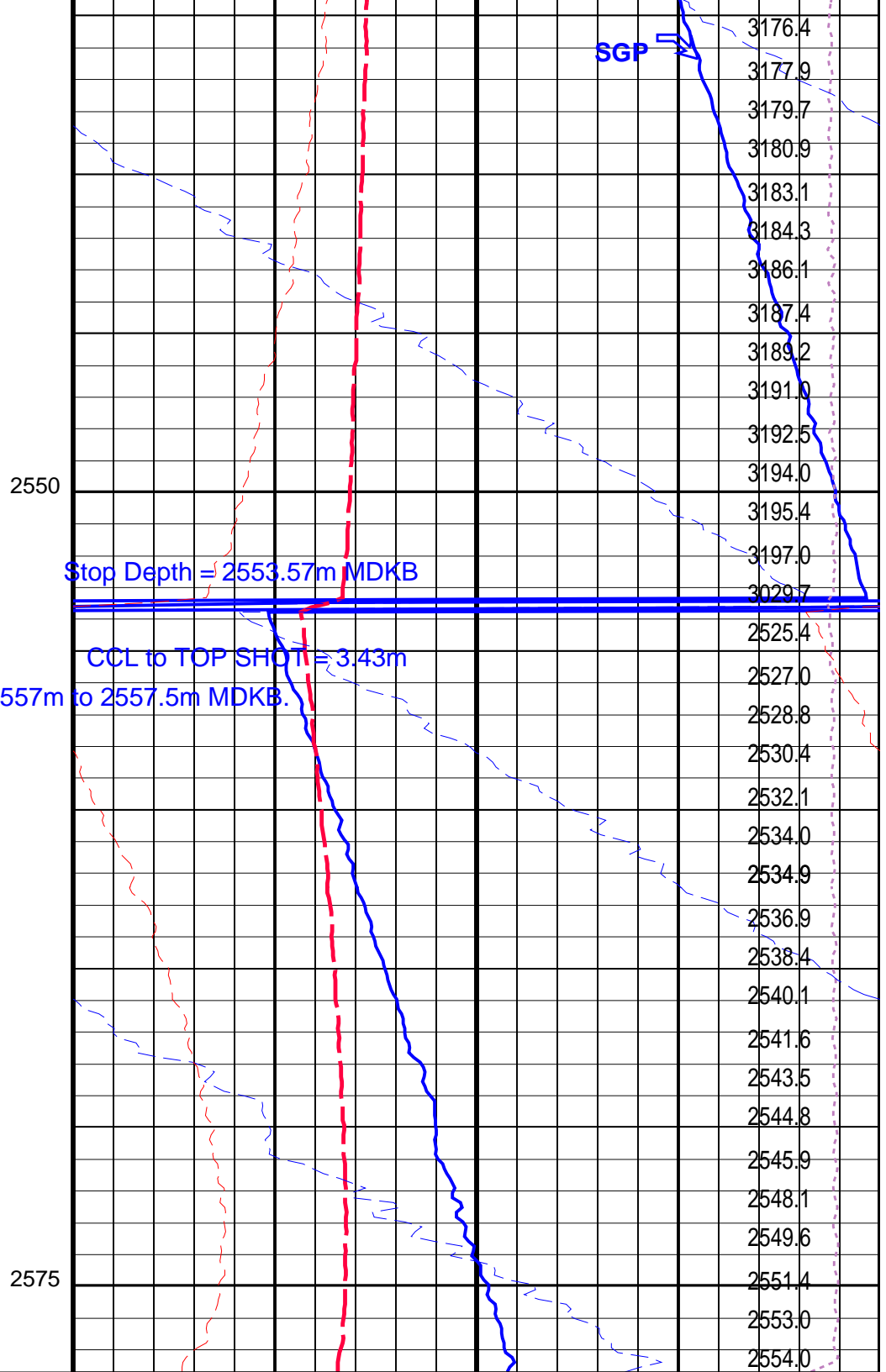
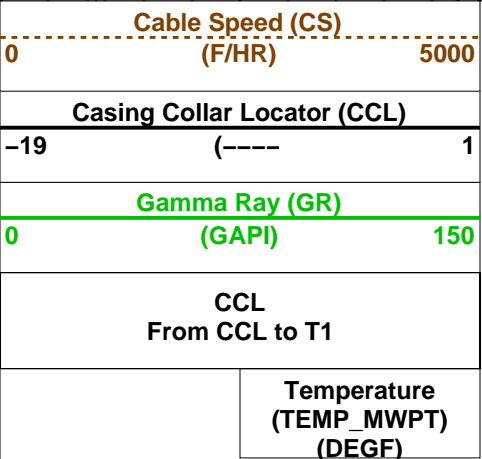
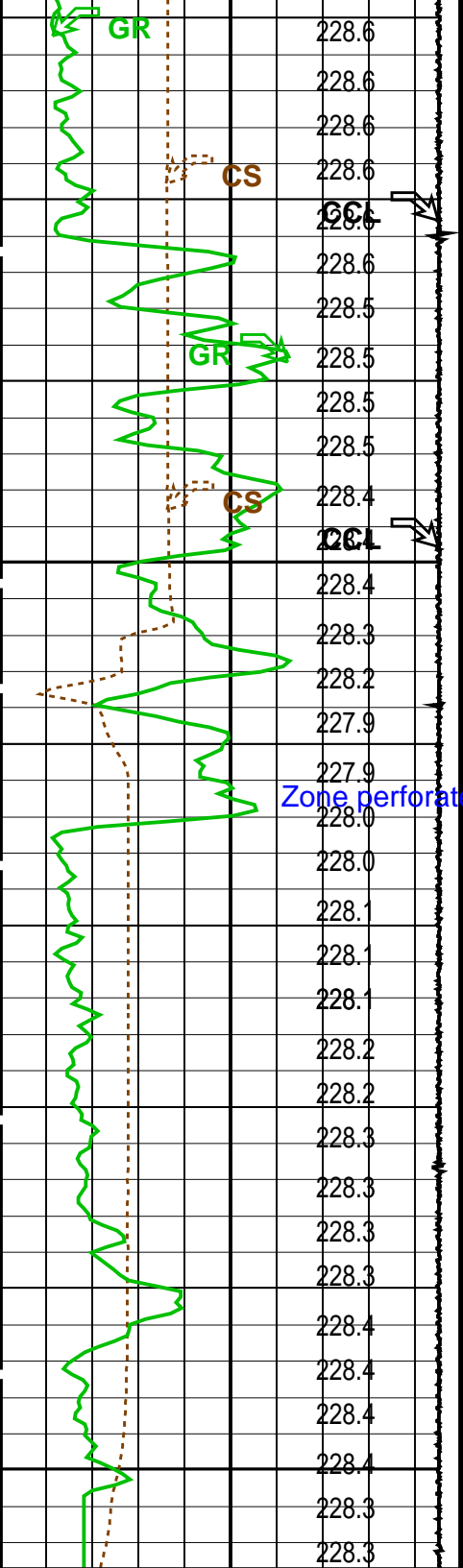
MWP\_GUN 14C0-302 MWPT-CA 14C0-302  
MWGT-AA 14C0-302

PIP SUMMARY

Time Mark Every 60 S







**Time Mark Every 60 S**

## Parameters

DLIS Name	Description	Value
MWPT-CA: MEASUREMENT WHILE PERFORATING TOOL		
DEVI_FL_CORR	Deviation Angle for Flow Line Correction	21 DEG
FLD	Flow Line Density	1 G/C3
MWPT_NULL_SOURCE	MWPT NULL Temperature Source	TEMS
MWPT_NULL_TEMP	MWPT NULL Temperature	0.0 DEGC

Format: MWP      Vertical Scale: 1:200      Graphics File Created: 28-Dec-2007 12:27

**OP System Version: 14C0-302**

## MCM

MWP_GUN	14C0-302	MWPT-CA	14C0-302
MWGT-AA	14C0-302		

## Output DLIS Files

DEFAULT PERFO 016LUP FN:15 PRODUCER 28-Dec-2007 12:27



## Correlation Pass

MAXIS Field Log

**Company: Esso Australia Pty Ltd.**

Well: A-23

## Input DLIS Files

DEFAULT	PERFO 014LUP	FN:13	PRODUCER	28-Dec-2007 12:05	2582.6 M	2544.0 M
---------	--------------	-------	----------	-------------------	----------	----------

## Output DLIS Files

DEFAULT	PERFO_023PUP	FN:22	PRODUCER	28-Dec-2007 15:34	2579.8 M	2541.7 M
---------	--------------	-------	----------	-------------------	----------	----------

**OP System Version: 14C0-302**

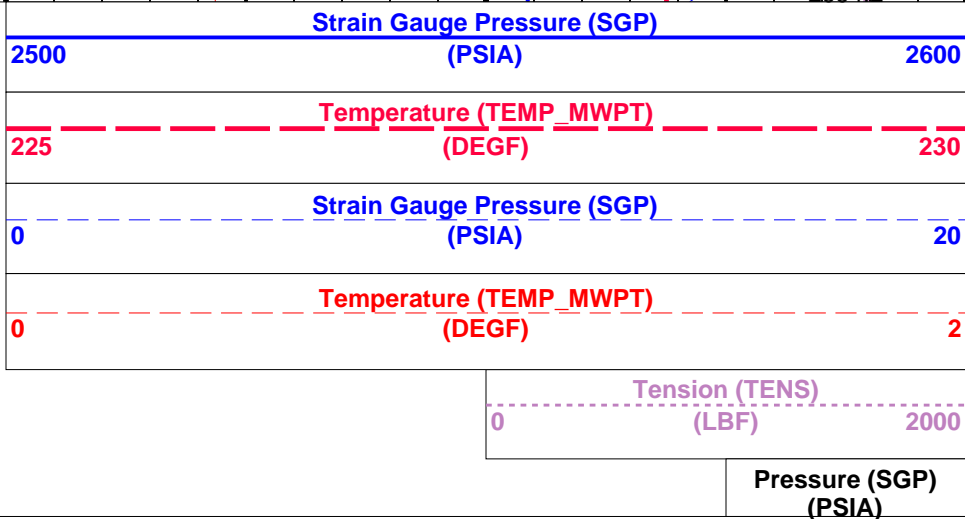
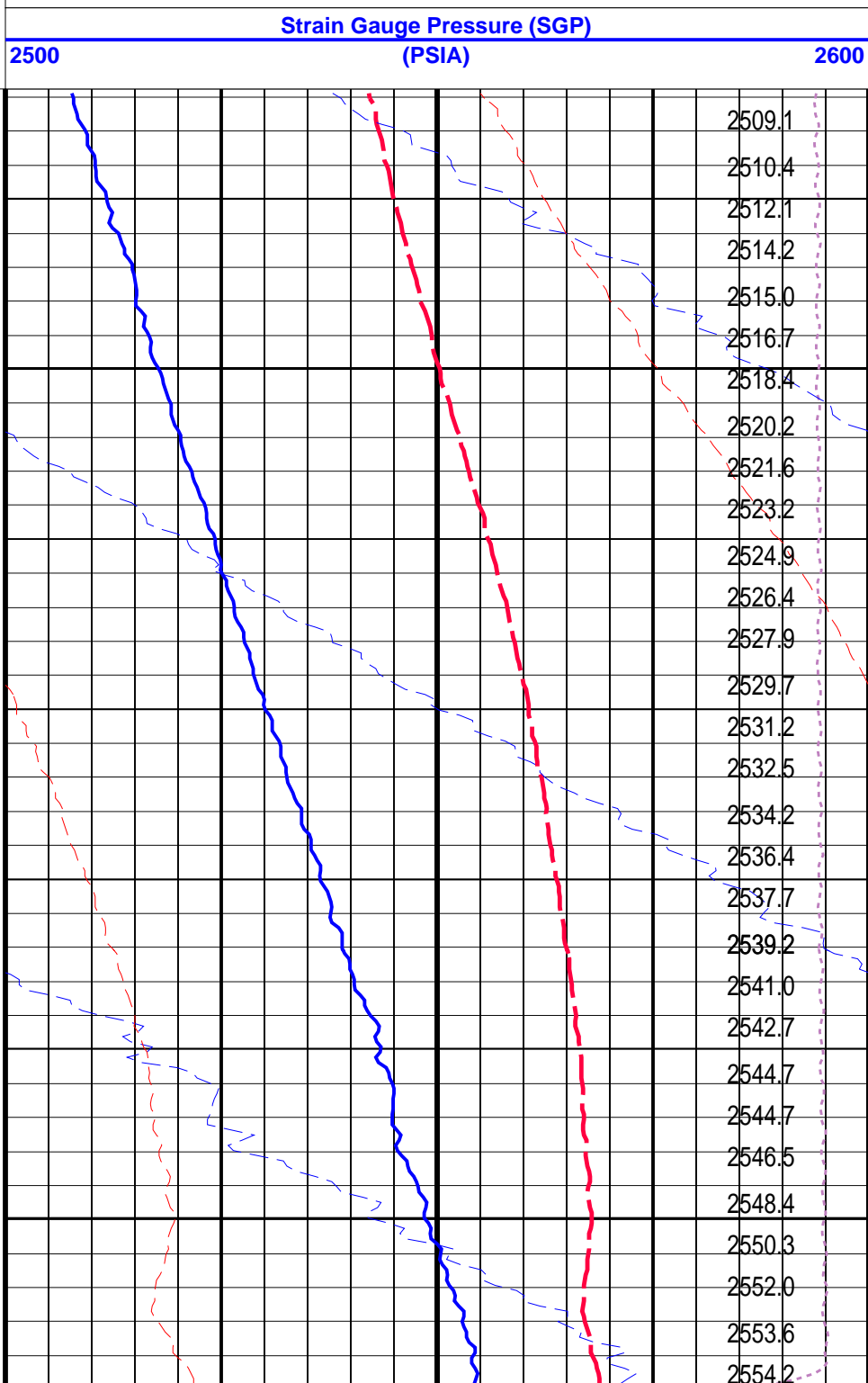
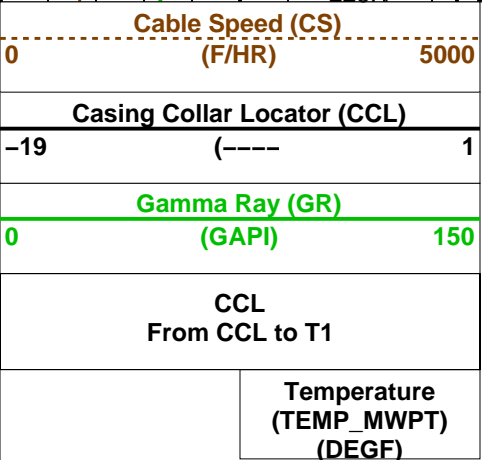
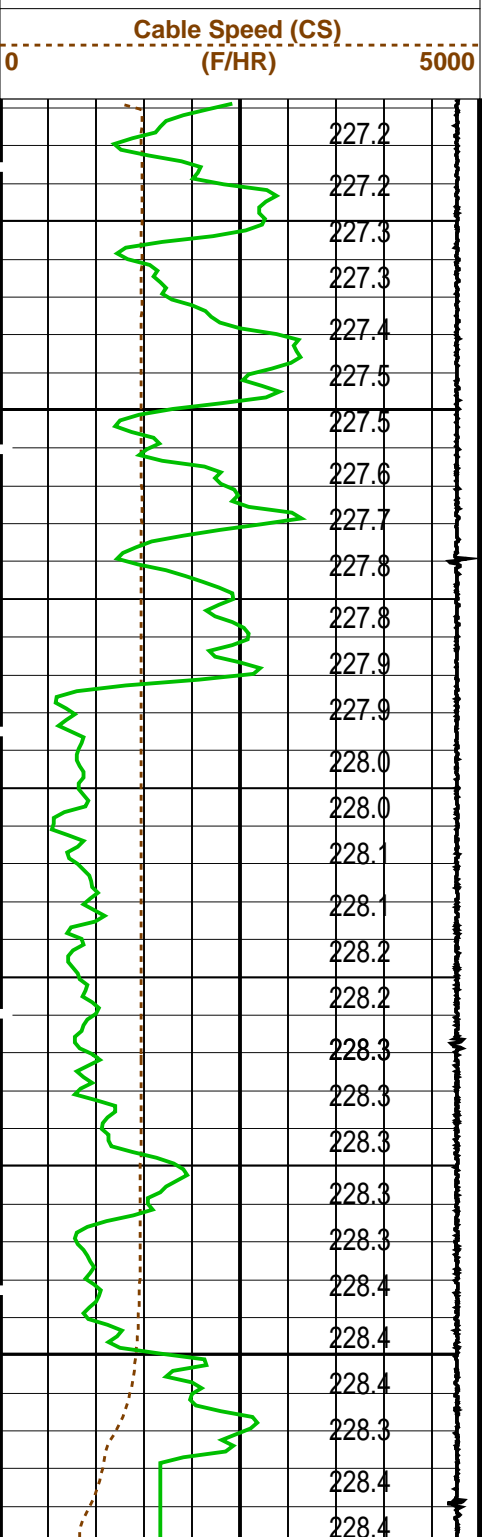
## MCM

MWP_GUN	14C0-302	MWPT-CA	14C0-302
MWGT-AA	14C0-302		

## PIP SUMMARY

**Time Mark Every 60 S**

		Pressure (SGP) (PSIA)	
Temperature (TEMP_MWPT) (DEGF)		Tension (TENS) (LBF)	
		0	2000
CCL From CCL to T1		Temperature (TEMP_MWPT) (DEGF)	
0	150	0	20
Gamma Ray (GR) (GAPI)		Strain Gauge Pressure (SGP) (PSIA)	
Casing Collar Locator (CCL)		Temperature (TEMP_MWPT) (DEGF)	
-19	1	225	230



PIP SUMMARY

Time Mark Every 60 S

## Parameters

DLIS Name	Description	Value	
MWPT-CA: MEASUREMENT WHILE PERFORATING TOOL			
DEVI_FL_CORR	Deviation Angle for Flow Line Correction	21	DEG
FLD	Flow Line Density	1	G/C3
MWPT_NULL_SOURCE	MWPT NULL Temperature Source	TEMS	
MWPT_NULL_TEMP	MWPT NULL Temperature	0.0	DEGC
System and Miscellaneous			
DO	Depth Offset for Playback	-2.7	M
PP	Playback Processing	NORMAL	

Format: MWP    Vertical Scale: 1:200    Graphics File Created: 28-Dec-2007 15:34

## OP System Version: 14C0-302

MCM

MWP_GUN	14C0-302	MWPT-CA	14C0-302
MWGT-AA	14C0-302		

## Input DLIS Files

DEFAULT	PERFO_014LUP	FN:13	PRODUCER	28-Dec-2007 12:05	2582.6 M	2544.0 M
---------	--------------	-------	----------	-------------------	----------	----------

## Output DLIS Files

DEFAULT	PERFO_023PUP	FN:22	PRODUCER	28-Dec-2007 15:34
---------	--------------	-------	----------	-------------------

Company: **Esso Australia Pty Ltd.**

**Schlumberger**

Well: **A-23**  
 Field: **Halibut**  
 Rig: **Crane**  
 Country: **Australia**

2 1/8" Phased  
 Powerjet Mwpt  
 Perforation