

[illegible]

Company: Esso Australia Pty Ltd.

Well: W-6a

Field: West Kingfish

Rig: Prod 4 / Crane

Country: Australia

GR Survey
PFCS-PILS-PBM
Tubing Diagnostics

Gippsland	Elev.: K.B. 33.43 m
Basin	G.L. -76.13 m
Bass Strait	D.F. 33.43 m

Permanent Datum:	M.S.L.	Elev.: 0 m
Log Measured From:	D.F.	33.4 m above Perm. Datum
Drilling Measured From:	D.F.	

State: Victoria	Max. Well Deviation 54 deg	Longitude 148°06'15.1"E	Latitude 038°35'40.7"S
-----------------	----------------------------	-------------------------	------------------------

Logging Date

8-Dec-2007

Run Number

One

Depth Driller

3442 m

Schlumberger Depth

3395 m

Bottom Log Interval

3395 m

Top Log Interval

3270 m

Casing Fluid Type

Production Fluids

Salinity

Density

Fluid Level

1693 m

BIT/CASING/TUBING STRING

Bit Size

8.500 in

From

To

Casing/Tubing Size

3.500 in

Weight

26 lbm/ft

Grade

L-80

From

12.28 m

To

3469 m

Maximum Recorded Temperatures

227 degF

Logger On Bottom

8-Dec-2007

Unit Number

889

Location

Ausl / Prod4

Recorded By

G Wright & R Sani.

Witnessed By

B White.

Run 1

Oil Density

Water Salinity

Gas Gravity

Bo

Bw

1/Bg

Bubble Point Pressure

Bubble Point Temperature

Solution GOR

Maximum Deviation

CEMENTING DATA

Primary/Squeeze

Casing String No

Lead Cement Type

Volume

Density

Water Loss

Additives

Tail Cement Type

Volume

Density

Water Loss

Additives

Expected Cement Top

Logging Date

Run Number

Depth Driller

Schlumberger Depth

Bottom Log Interval

Top Log Interval

Casing Fluid Type

Salinity

Density

Fluid Level

BIT/CASING/TUBING STRING

Bit Size

From

To

Casing/Tubing Size

Weight

Grade

From

To

Maximum Recorded Temperatures

Logger On Bottom

Unit Number

889

Location

Recorded By

Witnessed By

DEPTH SUMMARY LISTING

Date Created: 7-DEC-2007 10:18:13

Depth System Equipment

Depth Measuring Device	Tension Device	Logging Cable
Type: IDW-EB Serial Number: 6373 Calibration Date: 04-Jan-2007 Calibrator Serial Number: 9 Calibration Cable Type: 2-32ZT Wheel Correction 1: -2 Wheel Correction 2: -4	Type: PSDS/OSDS Serial Number: 325357 Calibration Date: 06-DEC-2007 Calibrator Serial Number: 1174 Calibration Gain: 0.89 Calibration Offset: 180.00	Type: 2-32ZT Serial Number: 25525 Length: 5584.85 M Conveyance Method: Wireline Rig Type: Offshore_Fixed

Depth Control Parameters

Log Sequence:	Subsequent Log In the Well
Reference Log Name:	Solar Compersite Log
Reference Log Run Number:	
Reference Log Date:	

Depth Control Remarks

1. IDW used as primary depth control
2. Z chart used as secondary depth control

DISCLAIMER

THE USE OF AND RELIANCE UPON THIS RECORDED-DATA BY THE HEREIN NAMED COMPANY (AND ANY OF ITS AFFILIATES, PARTNERS, REPRESENTATIVES, AGENTS, CONSULTANTS AND EMPLOYEES) IS SUBJECT TO THE TERMS AND CONDITIONS AGREED UPON BETWEEN SCHLUMBERGER AND THE COMPANY, INCLUDING: (a) RESTRICTIONS ON USE OF THE RECORDED-DATA; (b) DISCLAIMERS AND WAIVERS OF WARRANTIES AND REPRESENTATIONS REGARDING COMPANY'S USE OF AND RELIANCE UPON THE RECORDED-DATA; AND (c) CUSTOMER'S FULL AND SOLE RESPONSIBILITY FOR ANY INFERENCE DRAWN OR DECISION MADE IN CONNECTION WITH THE USE OF THIS RECORDED-DATA.

OTHER SERVICES1
OS1: None

REMARKS: RUN NUMBER 1
Log correlated to Esso Solar composite supplied with program.
Maximum well deviation = 54 degree's at 3094m MDKB.
.Objectives: To determine fluid entry of well.
Anomaly detected at 3323 m MDKB through blast joint.
Well not flowing from below tubing shoe.
SBHP = 2220 psia,SBHT = 227 degf.
FBHP = 1780 psia,FBHT = 227 degf.
The well was not perforated due to the damaged tubing.

SLB Crew : J Light , J Annear.

RUN 1
SERVICE ORDER #: AUSL07509098
PROGRAM VERSION: 14C0-302
FLUID LEVEL: 1693 m

LOGGED INTERVAL	START	STOP

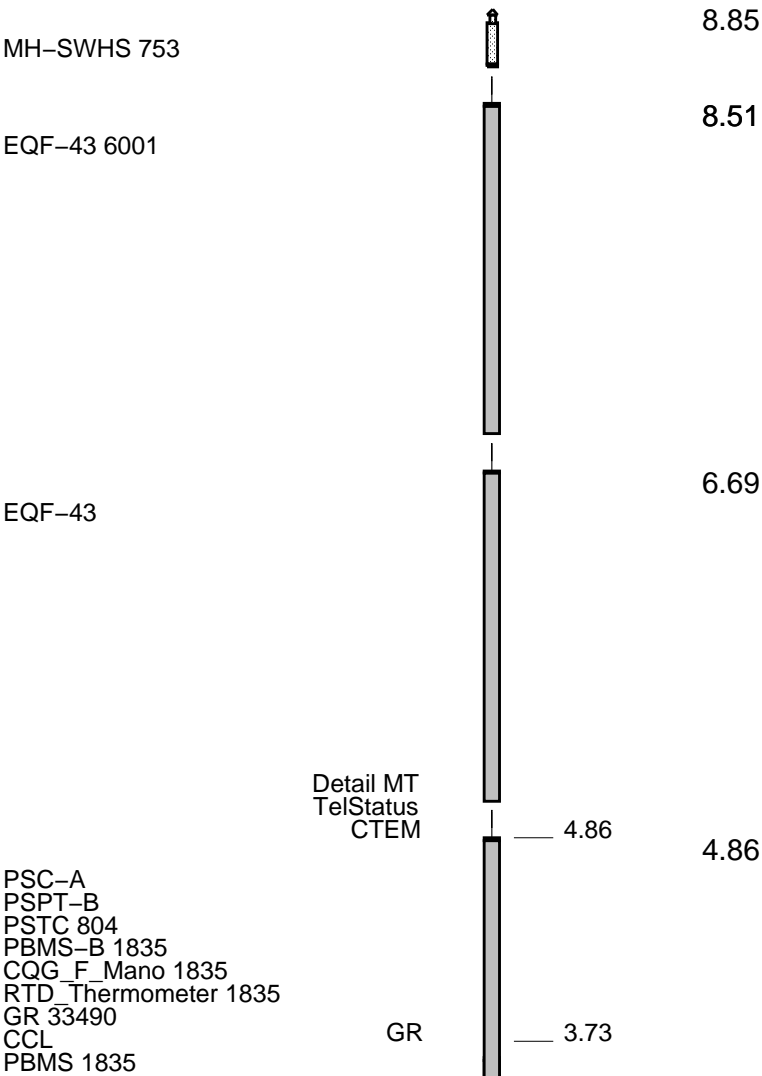
EQUIPMENT DESCRIPTION

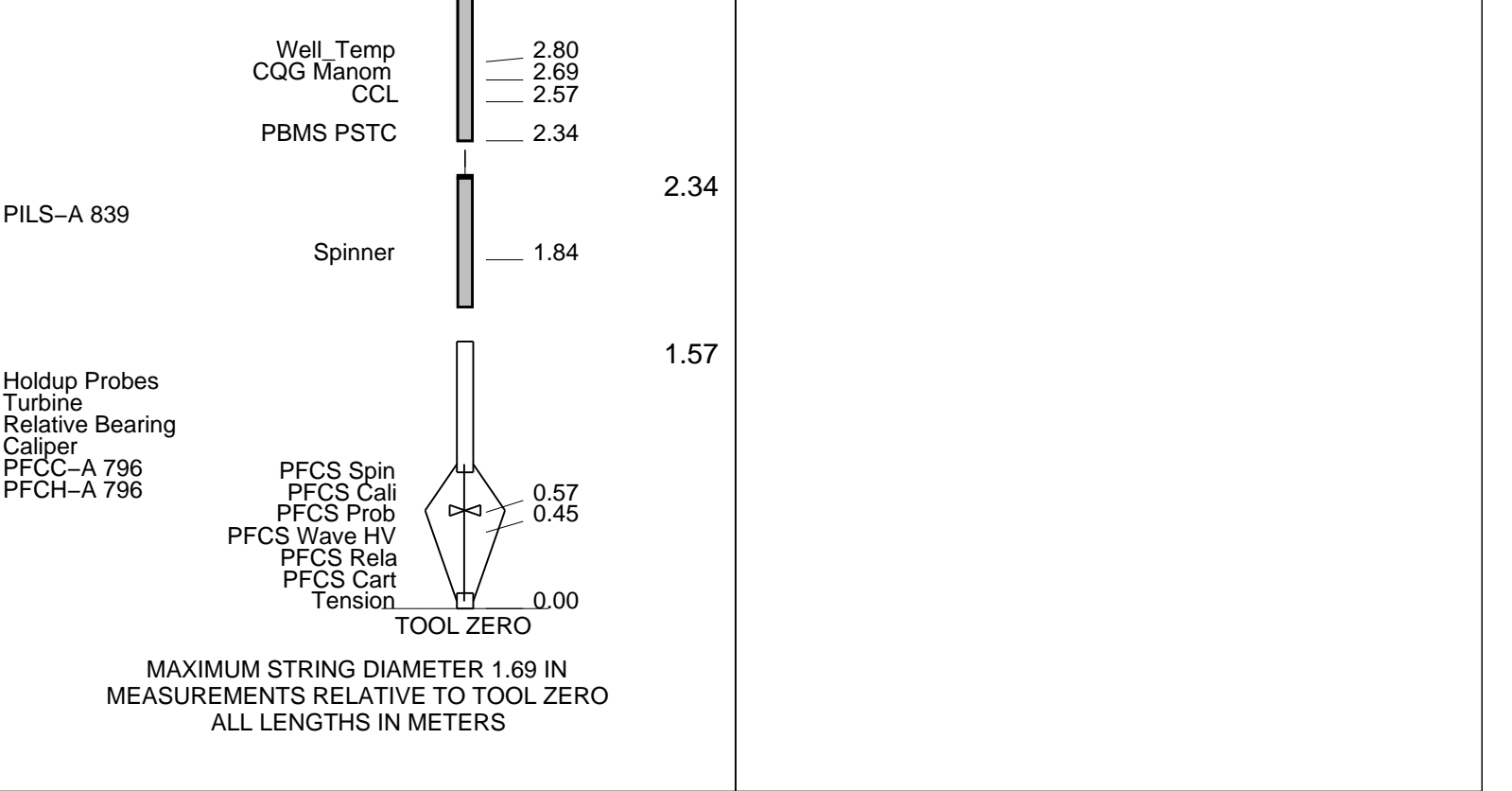
RUN 1

SURFACE EQUIPMENT

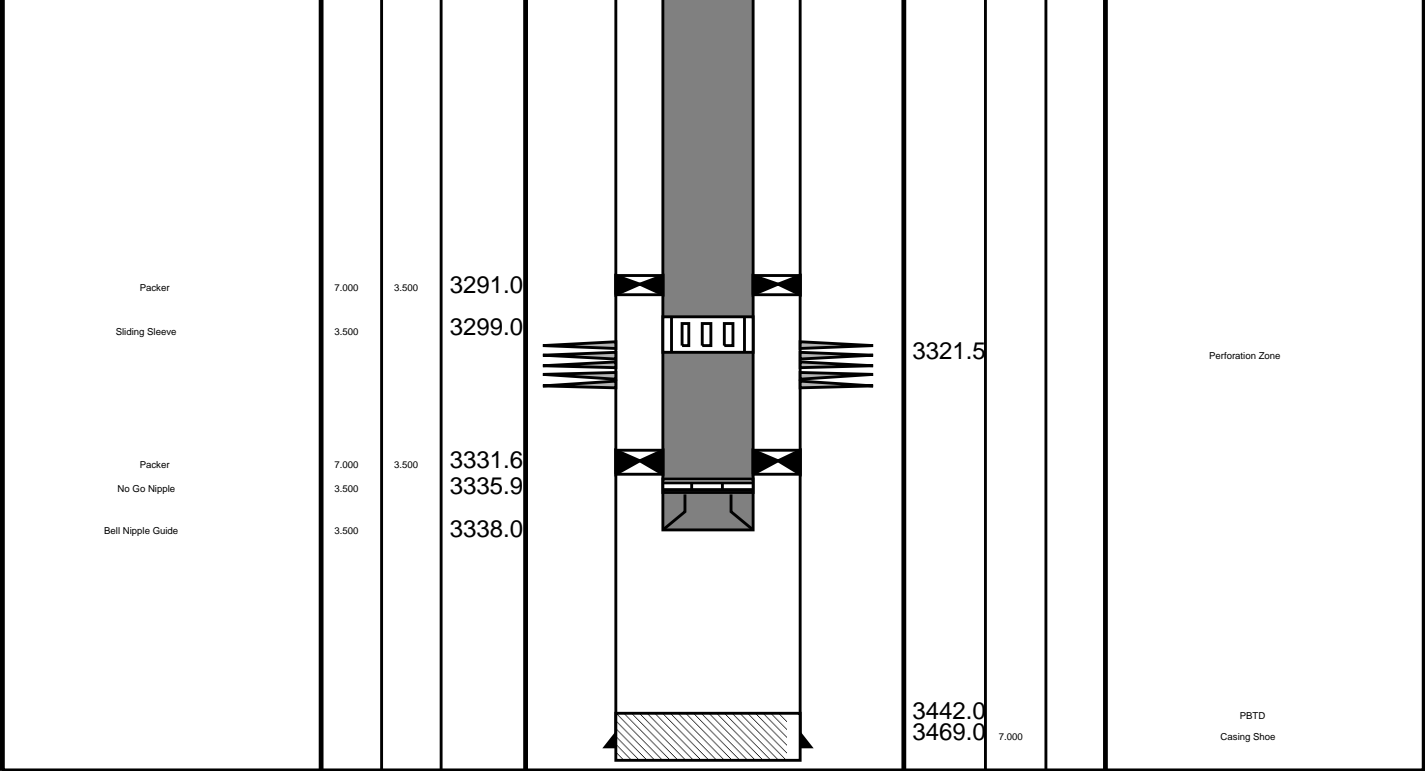
WITM-A
PSC_16MHZ

DOWNHOLE EQUIPMENT





Production String	(in)		(m)	Well Schematic	(m)	(in)		Casing String
	OD	ID	MD		MD	OD	ID	
Tubing Hanger	7.000	3.500	11.7		12.4	7.000	7.000	Casing String
Tubing	3.500		11.7		12.4	10.750		Liner Hanger
					12.4	10.750		Casing String
Shutin Valve	3.500		450.0					
Gas Lift Mandrel	3.500		860.0		694.8	10.750		Casing Shoe
Gas Lift Mandrel	3.500		1547.0					
Gas Lift Mandrel	3.500		1903.7					
Nipple	3.500		1919.0					



Job Events Summary

MAXIS Field Log

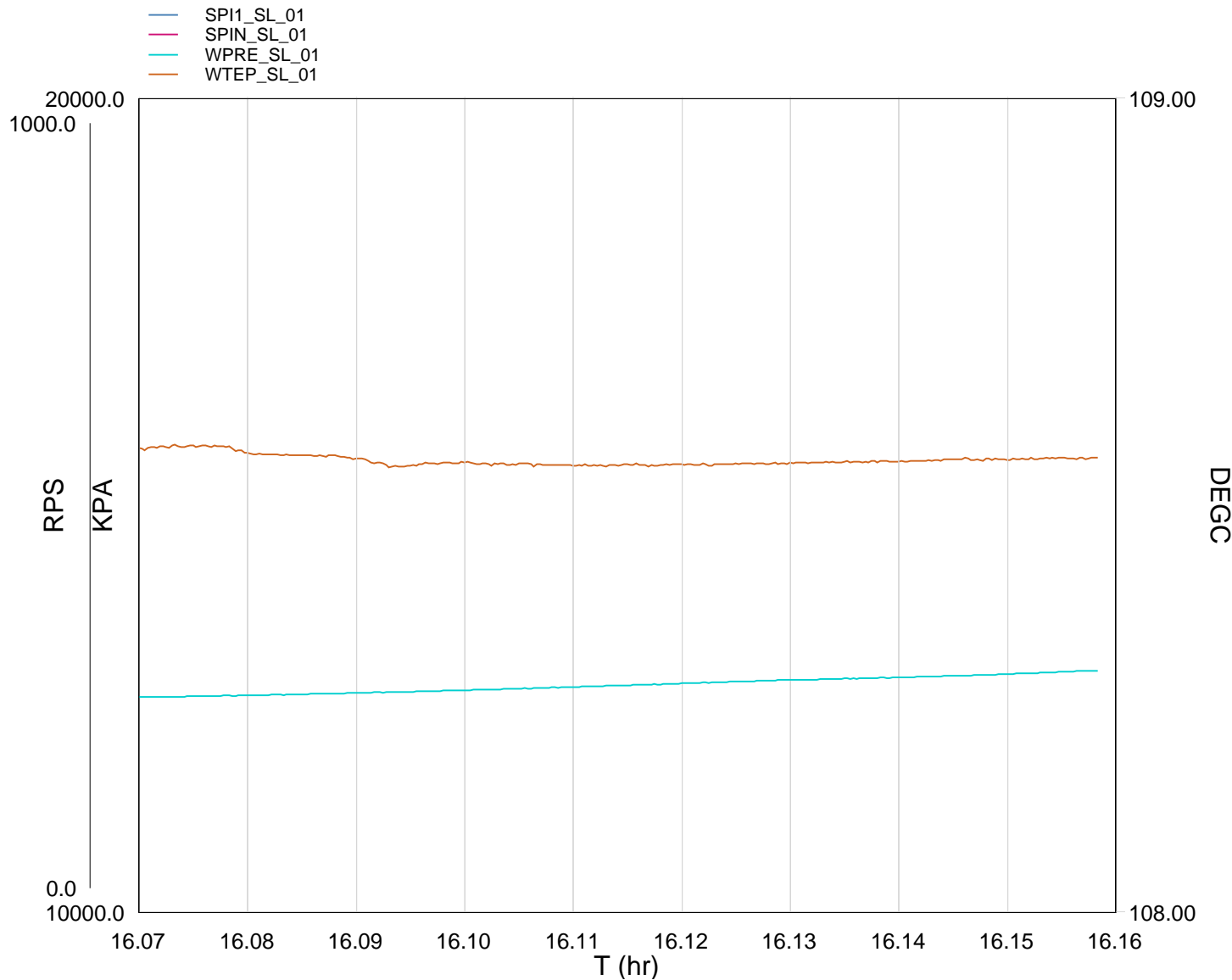
Schlumberger Job Event Summary

Time	Elapsed Time	Depth (M)	File
Before Calibration Completed 8-Dec-2007 12:22			
Rig Up Started 8-Dec-2007 12:30			
Station Log	8-Dec-2007 12:52 000:27	-6.0 - 4.1	FCS_ILS_PSP_016LTP
Log Pass (down)	8-Dec-2007 13:21 000:13	-10.7 - 146.0	FCS_ILS_PSP_017LDP
Log Pass (down)	8-Dec-2007 13:34 000:51	143.7 - 3403.9	FCS_ILS_PSP_018LDP
Log Pass (up)	8-Dec-2007 14:28 000:17	3403.9 - 3256.4	FCS_ILS_PSP_019LUP
Station Log	8-Dec-2007 15:07 000:40	3359.6 - 6.1	FCS_ILS_PSP_022LTP
Log Pass (up)	8-Dec-2007 15:48 000:09	3359.5 - 3272.2	FCS_ILS_PSP_023LUP
Log Pass (down)	8-Dec-2007 15:57 000:06	3267.2 - 3348.1	FCS_ILS_PSP_024LDP
Station Log	8-Dec-2007 16:04 000:05	3348.1 - 0.8	FCS_ILS_PSP_025LTP
Log Pass (up)	8-Dec-2007 16:21 000:02	3319.3 - 3305.9	FCS_ILS_PSP_026LUP
Log Pass (up)	8-Dec-2007 16:42 000:44	2662.0 - -3.6	FCS_ILS_PSP_027LUP
Rig Down Completed 8-Dec-2007 17:45			



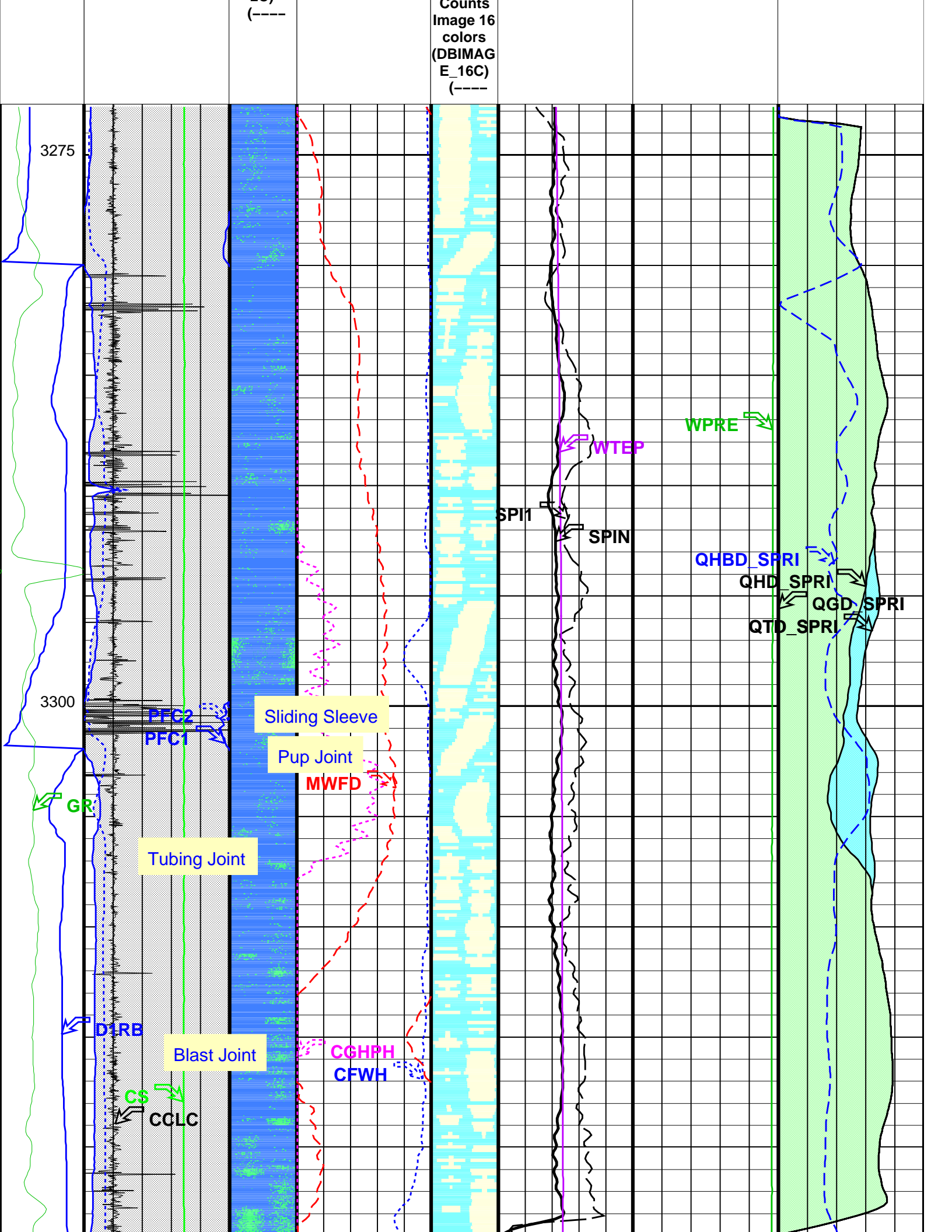
Station Log Well Flowing
3348 m MDKB

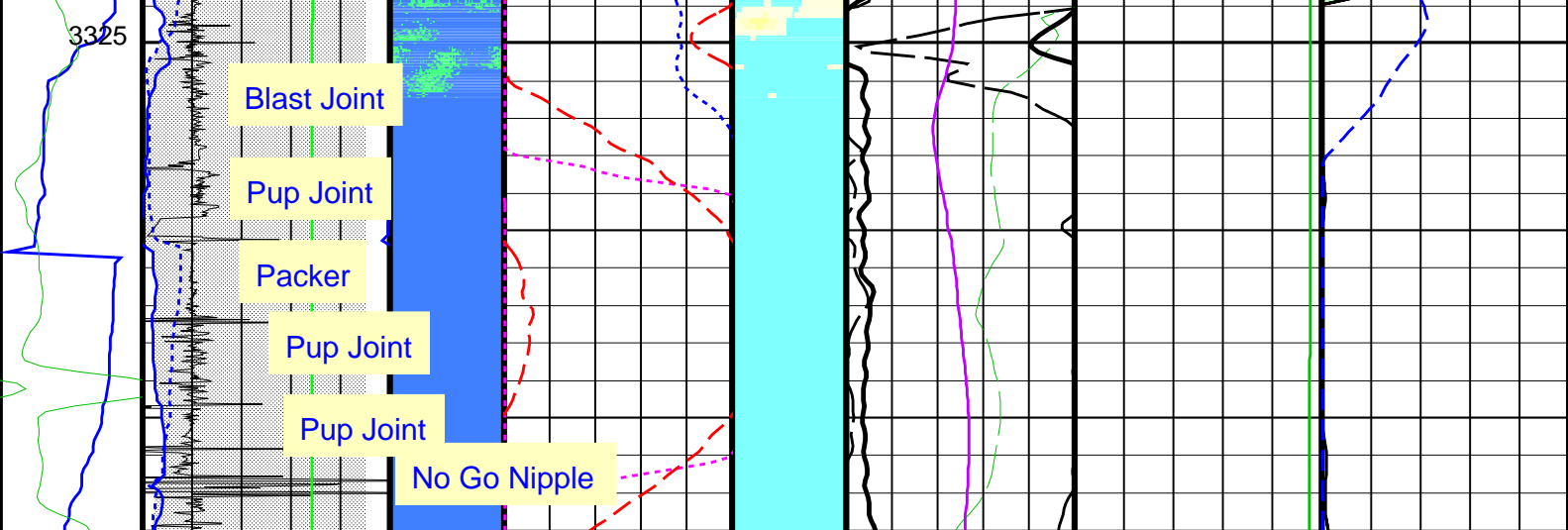
MAXIS Field Log



TIME	SPIN_SL	SPI1_SL	WTEP_SL	WPRE_SL
3510.0	0.0000	0.0000	227.4344	1835.3591
3540.0	0.0000	0.0000	227.4137	1838.0711
3570.0	0.0000	0.0000	227.4042	1841.8283
3600.0	0.0000	0.0000	227.3959	1845.9752
3630.0	0.0000	0.0000	227.3908	1850.6468
3660.0	0.0000	0.0000	227.3917	1855.3640
3690.0	0.0000	0.0000	227.3917	1861.2059
3720.0	0.0000	0.0000	227.3933	1865.7151
3750.0	0.0000	0.0000	227.3969	1869.7068

[illegible]





GR (GR) (GAPI) 0 150		Comp.CCL (CCLC) (V) -1 4		Eprobe Corrected Water Holdup (CFWH) (----) 0 1		Apparent spinner pitch (ASPI) (IN) 6 1		Well Pressure (WPRE) (PSIA) 0 1900		Eprobe Bubble Rate (QHBD_SPRI) (BB/D) 0 2000	
Probe1 RB (D1RB) (DEG) 0 360		Cable Speed (CS) (F/HR) 0 3000		Corrected Gradio Heavy Phase Holdup (CGHPH) (----) 0 1		Filtered Main Spinner (SPIN) (RPS) -3 10		Gas			
PFCS Caliper X (PFC1) (IN) 3 8		Pressure Gradient Density (MWFD) (G/C3) 0.2 1.2		Filtered Auxiliary Spinner 1 (SPI1) (RPS) -3 10		Oil					
PFCS Caliper Y (PFC2) (IN) 3 8				Well Temperature (WTEP) (DEGF) 225 230		Water Flowrate					
Well Diameter From PFC1 to PFCS_T1											
Well Diameter From PFC2 to PFCS_T1											

Format: SPRINT_PFCSImage_DL Vertical Scale: 1:200 Graphics File Created: 09-Dec-2007 10:39

OP System Version: 14C0-302
MCM

PFCS-A	14C0-302	PILS-A	14C0-302
PSPT-A/B	14C0-302		

Parameters		
DLIS Name	Description	Value

PFCS-A: PSP Flow and caliper Tool			
AMOD	Spinner Filter Averaging Mode	LINEAR_AVERAGE	
CSID	Casing Size I.D.	2.992	IN
DDRC	Dual DEFT DELTA RB COMPUTATION	D1RB2-D1RB	
DDRS	Dual DEFT RB Source	D1RB	
DFBD	DEFT Blank Disallowed Probes	NO	
DFFI	DEFT Flip Image	NO	
DFII	DEFT Image Interpolation	YES	
DFIRS	DEFT Image Rotation Selection	TOP_MIDDLE	
DFPP	Probes Arm Position	C	
GDEV	Average Angular Deviation of Borehole from Normal	54	DEG
SDCF	Spinner Depth Constant Filter	6	
SPI1	Auxiliary Spinner 1 Flowmeter Sonde	PILS-A	
SPIN	Main Spinner Flowmeter Sonde	PFCS-A_TURB	
PILS-A: PSP In Line Spinner Flowmeter			
AMOD	Spinner Filter Averaging Mode	LINEAR_AVERAGE	
SDCF	Spinner Depth Constant Filter	6	
SPI1	Auxiliary Spinner 1 Flowmeter Sonde	PILS-A	
SPIN	Main Spinner Flowmeter Sonde	PFCS-A_TURB	
PSPT-A/B: Production Services Logging Platform			
CSID	Casing Size I.D.	2.992	IN
GDEV	Average Angular Deviation of Borehole from Normal	54	DEG
BORDYN: BorDyn (Well Test Validation)			
CSID	Casing Size I.D.	2.992	IN
SPRI: Single Pass Rate Interpretation			
DENS_SEL	SPRint Density Selector	MWFD	
DGHC	Deft Ghost Probe Holdup Correction	MANU	
ESBS	Electrical-probe Stand-alone Bubble Size	0.06	IN
FLOWVIEW_FLAG	FlowView Water Holdup Used Flag	NO	
GDD_SPRI	Gas Downhole Density	0.15	G/C3
GFE CF	Gradio Friction Effect Correction Factor	1	
GHCF	GHOST Gas Holdup Correction Factor	0	
GHOST_FLAG	Ghost Gas Holdup Used Flag	NO	
GOR_SPRI	Gas Oil Ratio	89.0538	M3M3
GRADIO_FLAG	Gradiomaometer Holdup Used Flag	YES	
ODD_SPRI	Oil Downhole Density	0.8	G/C3
OGRA_SPRI	Gravity of Oil	40	DAPI
OSBS	Optical-probe Stand-alone Bubble Size	0.06	IN
PVT_DDENS_FLAG	Compute Downhole Densities from PVT Data	NO	
SEFF	Spinner Efficiency	1	
SPINNER_PITCH	Spinner Pitch	3.14	IN
SPIN_SEL	SPRint Spinner Selector	SPIN	
SPRI_INTPR_TYPE	SPRint Type of Interpretation	WATER_OIL_FLOW	
SURFACE_SPRI	Surface Flowrates Computation	NO	
THRE	Spinner Threshold	2.087	M/MN
WDD_SPRI	Water Downhole Density	1	G/C3
WHCF	PFCS/DEFT Water Holdup Correction Factor	0	
WSAL_SPRI	Water Salinity	50000	PPM
System and Miscellaneous			
DO	Depth Offset for Playback	0.0	M
PP	Playback Processing	NORMAL	

Input DLIS Files

DEFAULT	FCS_ILS_PSP_023LUP	FN:21	PRODUCER	08-Dec-2007 15:48	3359.5 M	3272.2 M
---------	--------------------	-------	----------	-------------------	----------	----------

Output DLIS Files

DEFAULT	FCS_ILS_PSP_058PUP	FN:55	PRODUCER	09-Dec-2007 10:39
---------	--------------------	-------	----------	-------------------



Log Down @ 2700ft/hr Well Flowing

MAXIS Field Log

Input DLIS Files

DEFAULT	FCS_ILS_PSP_028LUP	PRODUCER	08-Dec-2007 16:45	3348.1 M	3267.2 M
---------	--------------------	----------	-------------------	----------	----------

Output DLIS Files

DEFAULT

FCS_ILS_PSP_060PUP

FN:57

PRODUCER

09-Dec-2007 12:07

3345.2 M

3264.7 M

OP System Version: 14C0-302

MCM

PFCS-A
PSPT-A/B

14C0-302
14C0-302

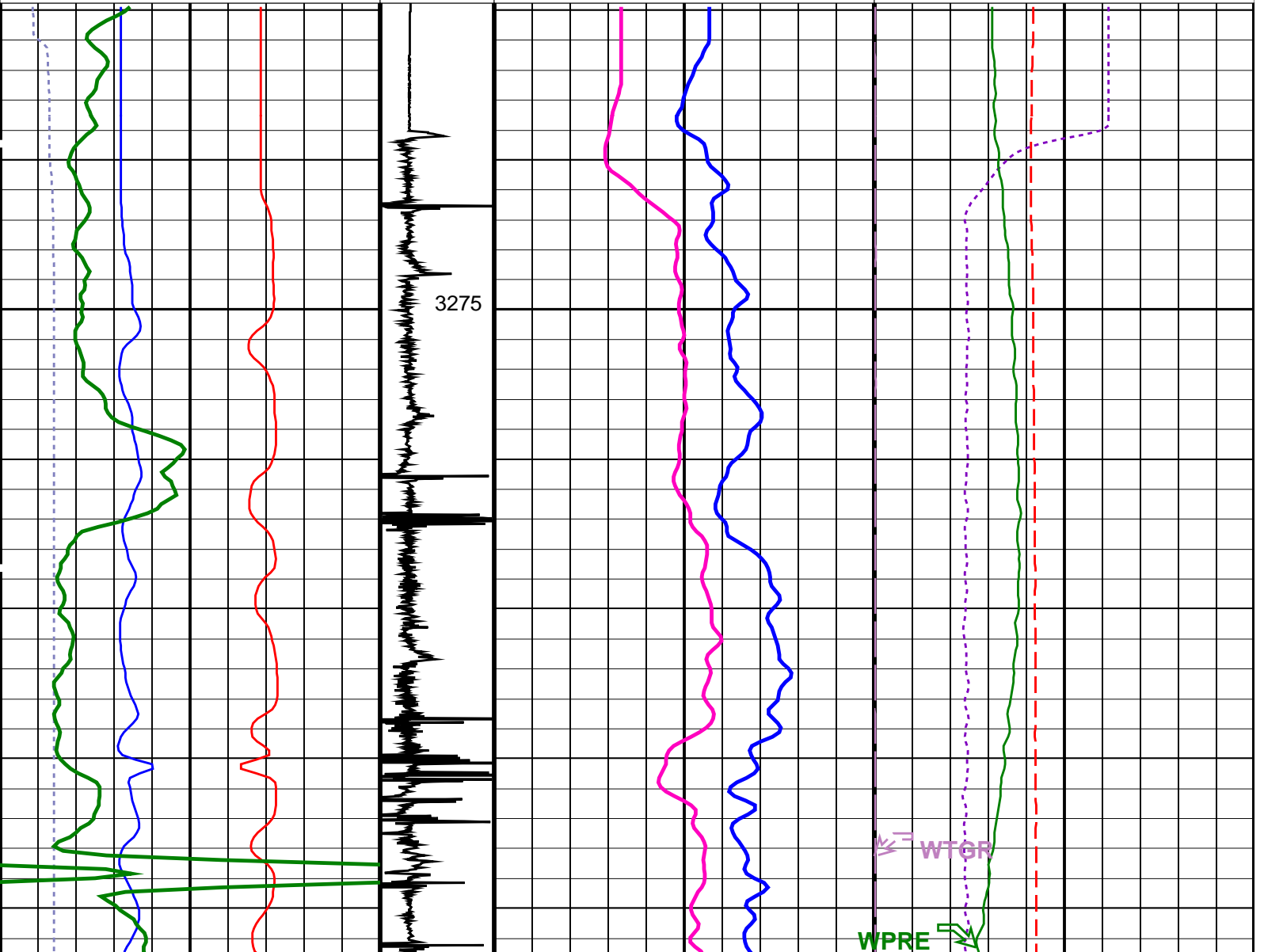
PILS-A

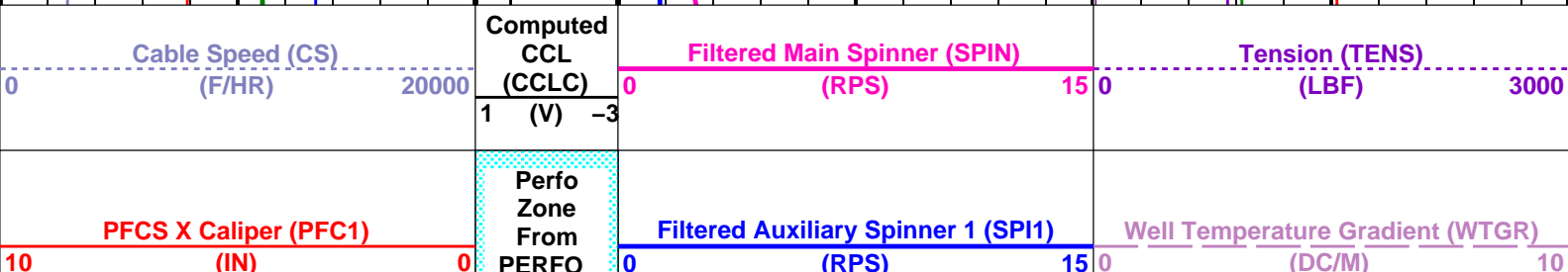
14C0-302

PIP SUMMARY

Time Mark Every 60 S

Gamma Ray (GR) 0 (GAPI) 150		Well Pressure (WPRE) 2100 (PSIA) 2300	
PFCS Y Caliper (PFC2) 0 (IN) 10		Well Temperature (WTGP) 220 (DEGF) 230	
PFCS X Caliper (PFC1) 10 (IN) 0		Filtered Auxiliary Spinner 1 (SPI1) 0 (RPS) 15	Well Temperature Gradient (WTGR) 0 (DC/M) 10
Cable Speed (CS) 0 (F/HR) 20000		Filtered Main Spinner (SPIN) 0 (RPS) 15	Tension (TENS) 0 (LBF) 3000
Perfo Zone From PERFO_CURVE to D3T Computed CCL (CCLC) 1 (V) -3			





		CURVE to D3T		
PFCS Y Caliper (PFC2)			Well Temperature (WTEP)	
0	(IN) 10		220	(DEGF) 230
Gamma Ray (GR)			Well Pressure (WPRE)	
0	(GAPI) 150		2100	(PSIA) 2300


PIP SUMMARY				
Time Mark Every 60 S				

Format: PSP_1_2	Vertical Scale: 1:200	Graphics File Created: 09-Dec-2007 12:07		
-----------------	-----------------------	--	--	--

OP System Version: 14C0-302				
MCM				
PFCS-A	14C0-302	PILS-A	14C0-302	
PSPT-A/B	14C0-302			

Parameters			
DLIS Name	Description	Value	
PFCS-A: PSP Flow and caliper Tool			
AMOD	Spinner Filter Averaging Mode	LINEAR_AVERAGE	
SDCF	Spinner Depth Constant Filter	6	
SPI1	Auxiliary Spinner 1 Flowmeter Sonde	PILS-A	
SPIN	Main Spinner Flowmeter Sonde	PFCS-A_TURB	
PILS-A: PSP In Line Spinner Flowmeter			
AMOD	Spinner Filter Averaging Mode	LINEAR_AVERAGE	
SDCF	Spinner Depth Constant Filter	6	
SPI1	Auxiliary Spinner 1 Flowmeter Sonde	PILS-A	
SPIN	Main Spinner Flowmeter Sonde	PFCS-A_TURB	
System and Miscellaneous			
DO	Depth Offset for Playback	-2.9	M
PP	Playback Processing	NORMAL	

Input DLIS Files						
DEFAULT	Flip_FCS_ILS_PSP_028LUP	PRODUCER	08-Dec-2007 16:45	3348.1 M	3267.2 M	
Output DLIS Files						
DEFAULT	FCS_ILS_PSP_060PUP	FN:57	PRODUCER	09-Dec-2007 12:07		



Log Up @ 2000ft/hr Well Flowing

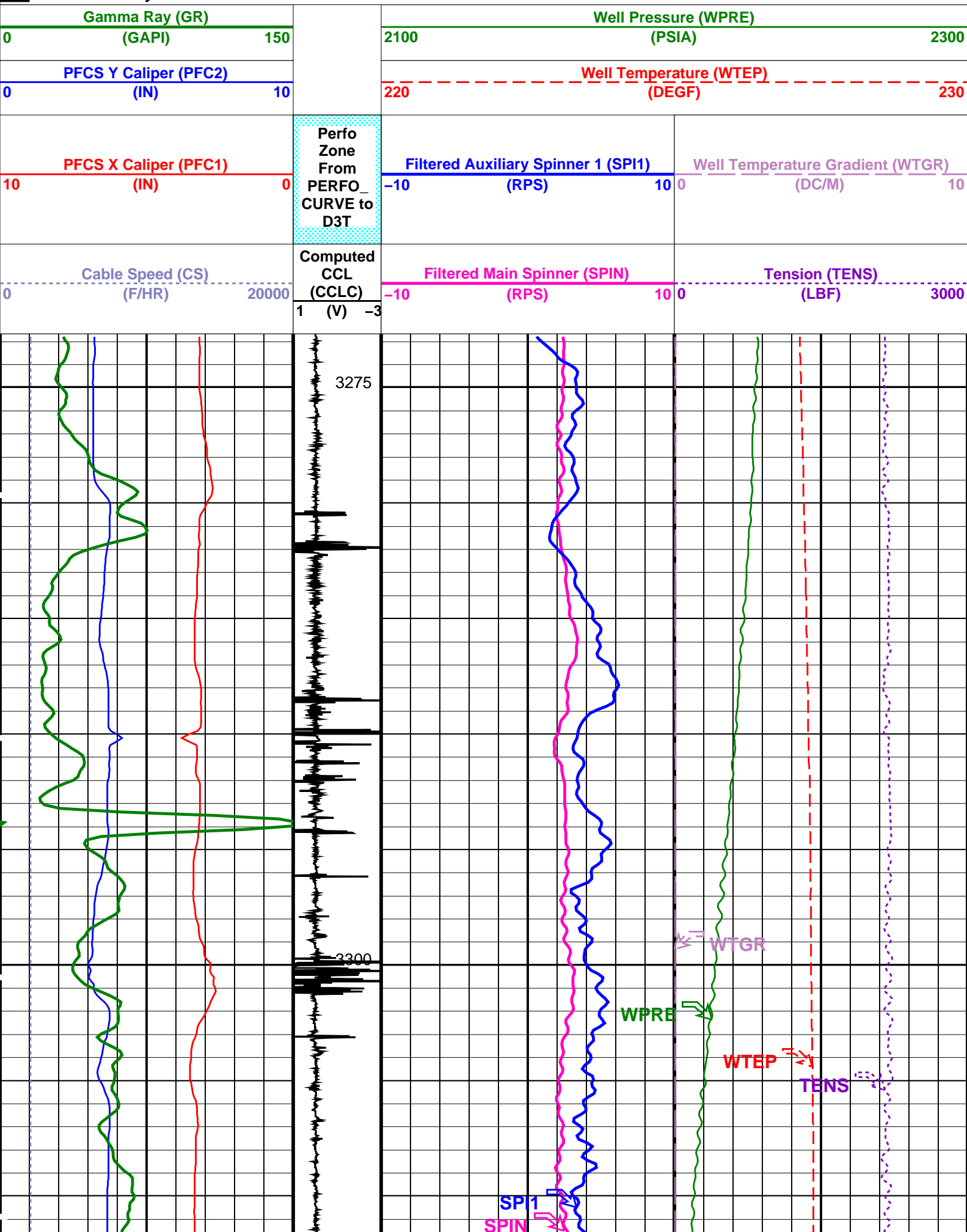
MAXIS Field Log

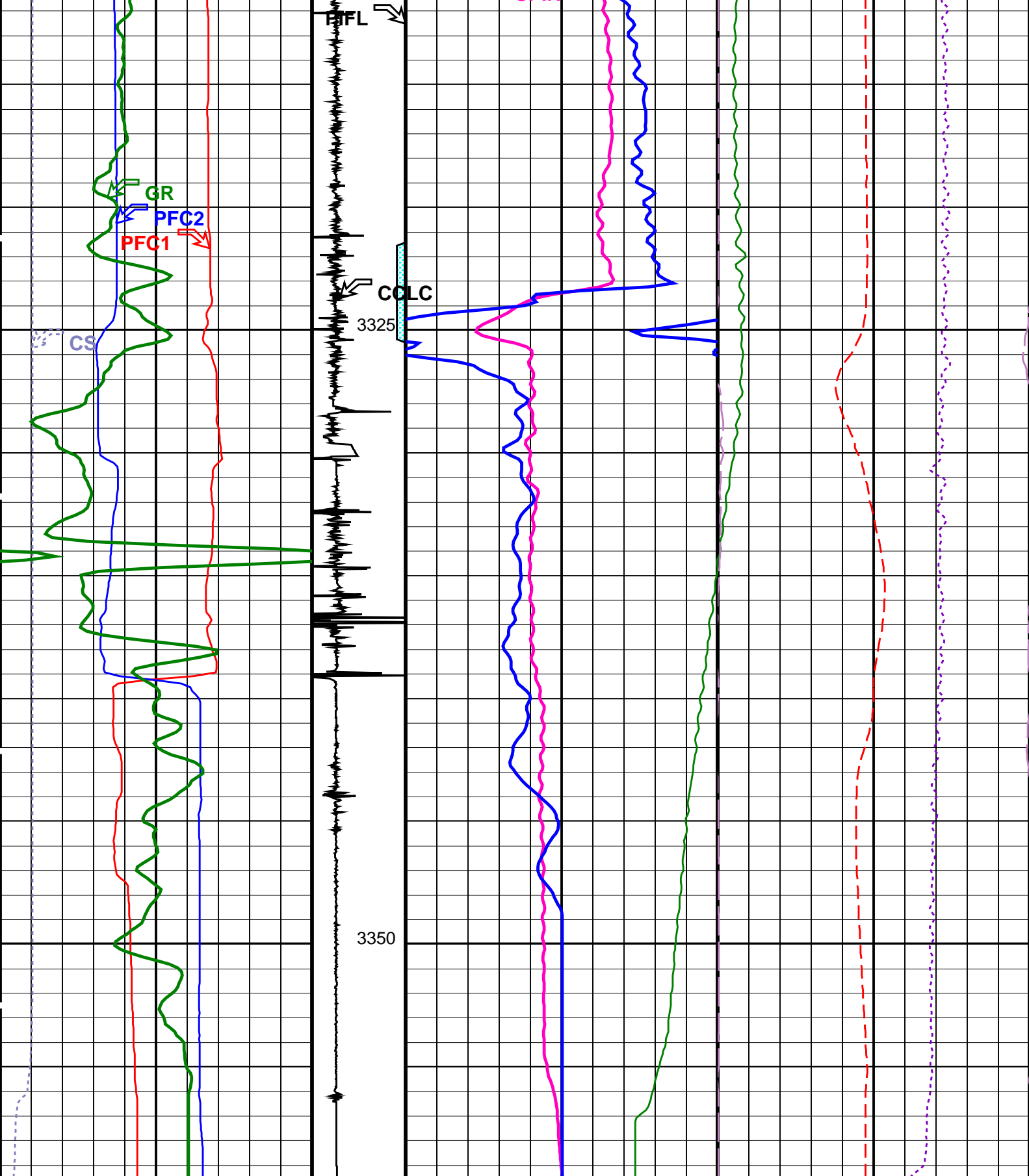
Input DLIS Files						
DEFAULT	FCS_ILS_PSP_023LUP	FN:21	PRODUCER	08-Dec-2007 15:48	3359.5 M	3272.2 M
Output DLIS Files						
DEFAULT	FCS_ILS_PSP_050PUP	FN:47	PRODUCER	09-Dec-2007 09:02	3359.5 M	3272.6 M

OP System Version: 14C0-302			
MCM			
PFCS-A	14C0-302	PILS-A	14C0-302
PSPT-A/B	14C0-302		

PIP SUMMARY

Time Mark Every 60 S





<p>Cable Speed (CS) (F/HR)</p> <p>0 20000</p>	<p>Computed CCL (CCLC) 1 (V) -3</p>	<p>Filtered Main Spinner (SPIN) (RPS)</p> <p>-10 10 0</p>	<p>Tension (TENS) (LBF)</p> <p>0 3000</p>
<p>PFC1 X Caliper (PFC1) (IN)</p> <p>10 0</p>	<p>Perfo Zone From PERFO_ CURVE to</p>	<p>Filtered Auxiliary Spinner 1 (SP1) (RPS)</p> <p>-10 10 0</p>	<p>Well Temperature Gradient (WTGR) (DC/M)</p> <p>0 10</p>


		D3T	
PFCS Y Caliper (PFC2)			Well Temperature (WTEP)
0	(IN)	10	220 (DEGF) 230
Gamma Ray (GR)			Well Pressure (WPRE)
0	(GAPI)	150	2100 (PSIA) 2300

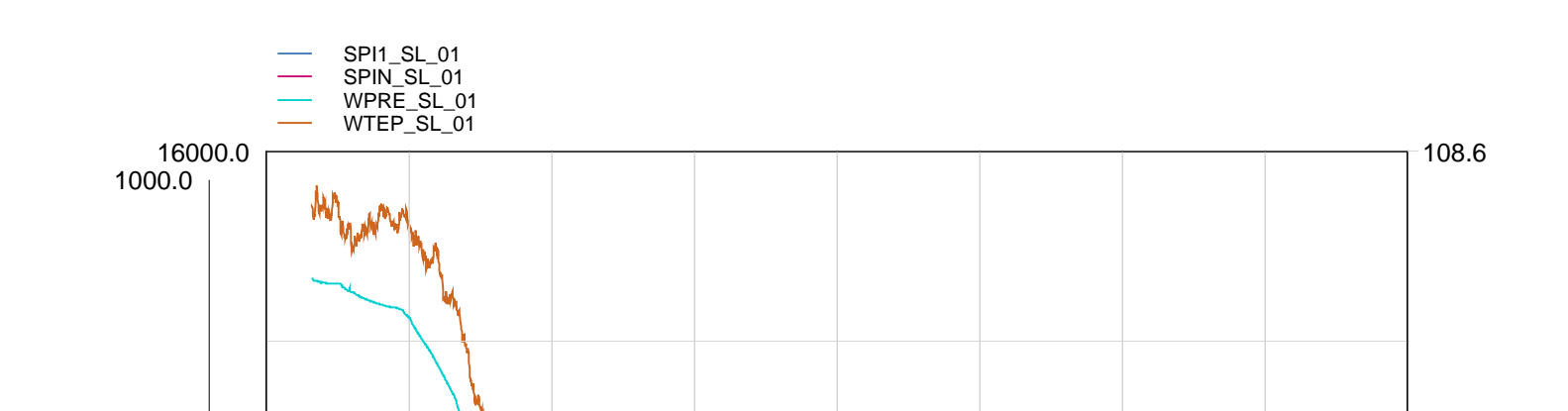
PIP SUMMARY			
Time Mark Every 60 S			
Format: PSP_1_2	Vertical Scale: 1:200	Graphics File Created: 09-Dec-2007 09:02	

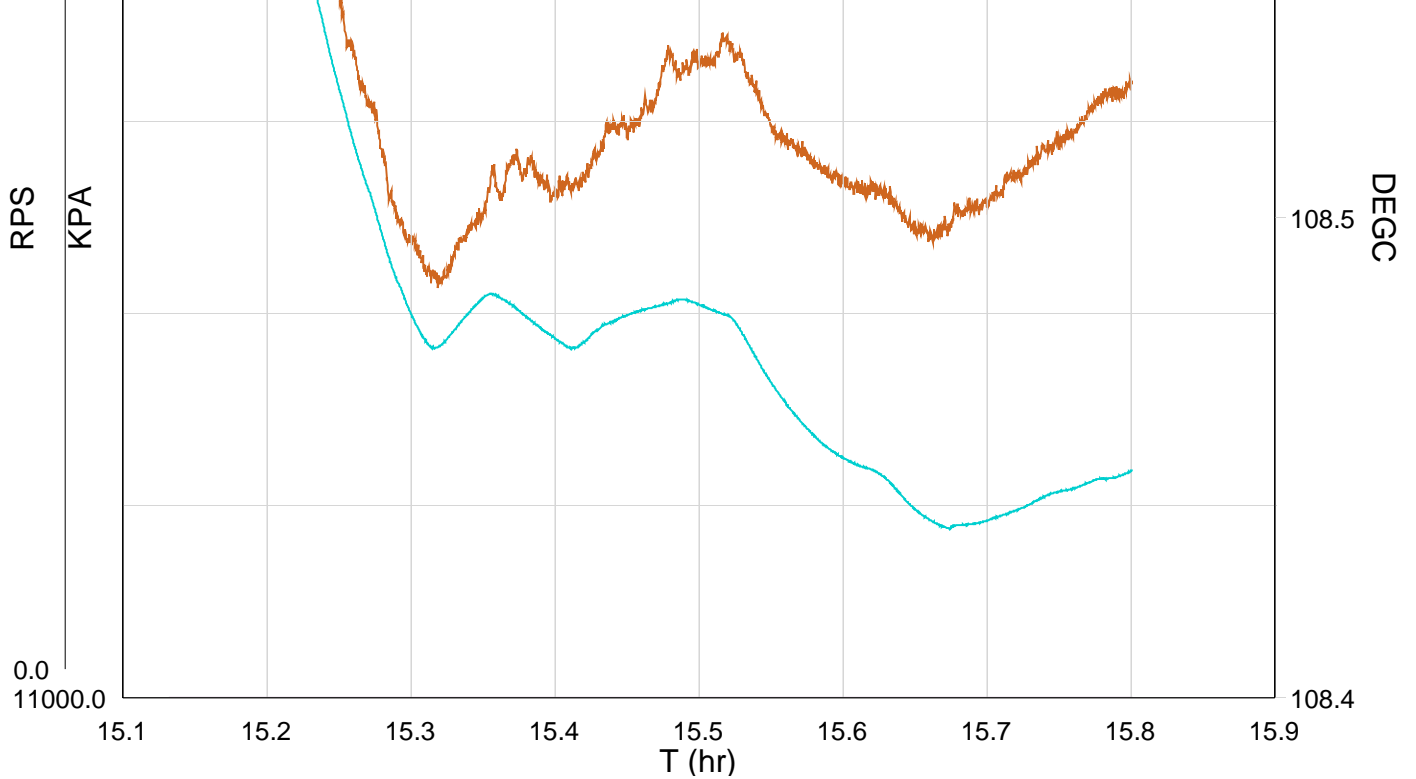
OP System Version: 14C0-302			
MCM			
PFCS-A	14C0-302	PILS-A	14C0-302
PSPT-A/B	14C0-302		

Parameters			
DLIS Name		Description	Value
PFCS-A: PSP Flow and caliper Tool			
AMOD		Spinner Filter Averaging Mode	LINEAR_AVERAGE
SDCF		Spinner Depth Constant Filter	6
SPI1		Auxiliary Spinner 1 Flowmeter Sonde	PILS-A
SPIN		Main Spinner Flowmeter Sonde	PFCS-A_TURB
PILS-A: PSP In Line Spinner Flowmeter			
AMOD		Spinner Filter Averaging Mode	LINEAR_AVERAGE
SDCF		Spinner Depth Constant Filter	6
SPI1		Auxiliary Spinner 1 Flowmeter Sonde	PILS-A
SPIN		Main Spinner Flowmeter Sonde	PFCS-A_TURB
System and Miscellaneous			
DO		Depth Offset for Playback	0.0 M
PP		Playback Processing	NORMAL

Input DLIS Files						
DEFAULT	FCS_ILS_PSP_023LUP	FN:21	PRODUCER	08-Dec-2007 15:48	3359.5 M	3272.2 M
Output DLIS Files						
DEFAULT	FCS_ILS_PSP_050PUP	FN:47	PRODUCER	09-Dec-2007 09:02		

		<div>Station Log Well Draw Down</div> <div>3360 m MDKB</div>
MAXIS Field Log		





TIME	SPIN_SL	SPI1_SL	WTEP_SL	WPRE_SL
100.0	0.0000	0.0000	227.4597	2228.0018
200.0	0.0000	0.0000	227.4506	2216.5817
300.0	0.0000	0.0000	227.4583	2203.4057
400.0	0.0000	0.0000	227.4398	2176.6306
500.0	0.0000	0.0000	227.4105	2113.0334
600.0	0.0000	0.0000	227.3509	1997.5051
700.0	0.0000	0.0000	227.2993	1905.3741
800.0	0.0000	0.0000	227.2764	1861.5611
900.0	0.0000	0.0000	227.3016	1895.8141
1000.0	0.0000	0.0000	227.3168	1886.7680
1100.0	0.0000	0.0000	227.3122	1864.1945
1200.0	0.0000	0.0000	227.3256	1875.2041
1300.0	0.0000	0.0000	227.3376	1888.1314
1400.0	0.0000	0.0000	227.3522	1896.2979
1500.0	0.0000	0.0000	227.3661	1886.0794
1600.0	0.0000	0.0000	227.3437	1846.6751
1700.0	0.0000	0.0000	227.3254	1804.4382
1800.0	0.0000	0.0000	227.3132	1777.9229
1900.0	0.0000	0.0000	227.3100	1764.1006
2000.0	0.0000	0.0000	227.2953	1734.6639
2100.0	0.0000	0.0000	227.3026	1726.0519
2200.0	0.0000	0.0000	227.3095	1732.7431
2300.0	0.0000	0.0000	227.3226	1745.6304
2400.0	0.0000	0.0000	227.3365	1755.5276
2500.0	0.0000	0.0000	227.3458	1763.2279

Input DLIS Files

DEFAULT FCS_ILS_PSP_020PUP FN:18 PRODUCER 08-Dec-2007 14:49 3410.9 M 3264.0 M

Output DLIS Files

DEFAULT FCS_ILS_PSP_048PUP FN:45 PRODUCER 09-Dec-2007 08:56 3410.9 M 3264.4 M

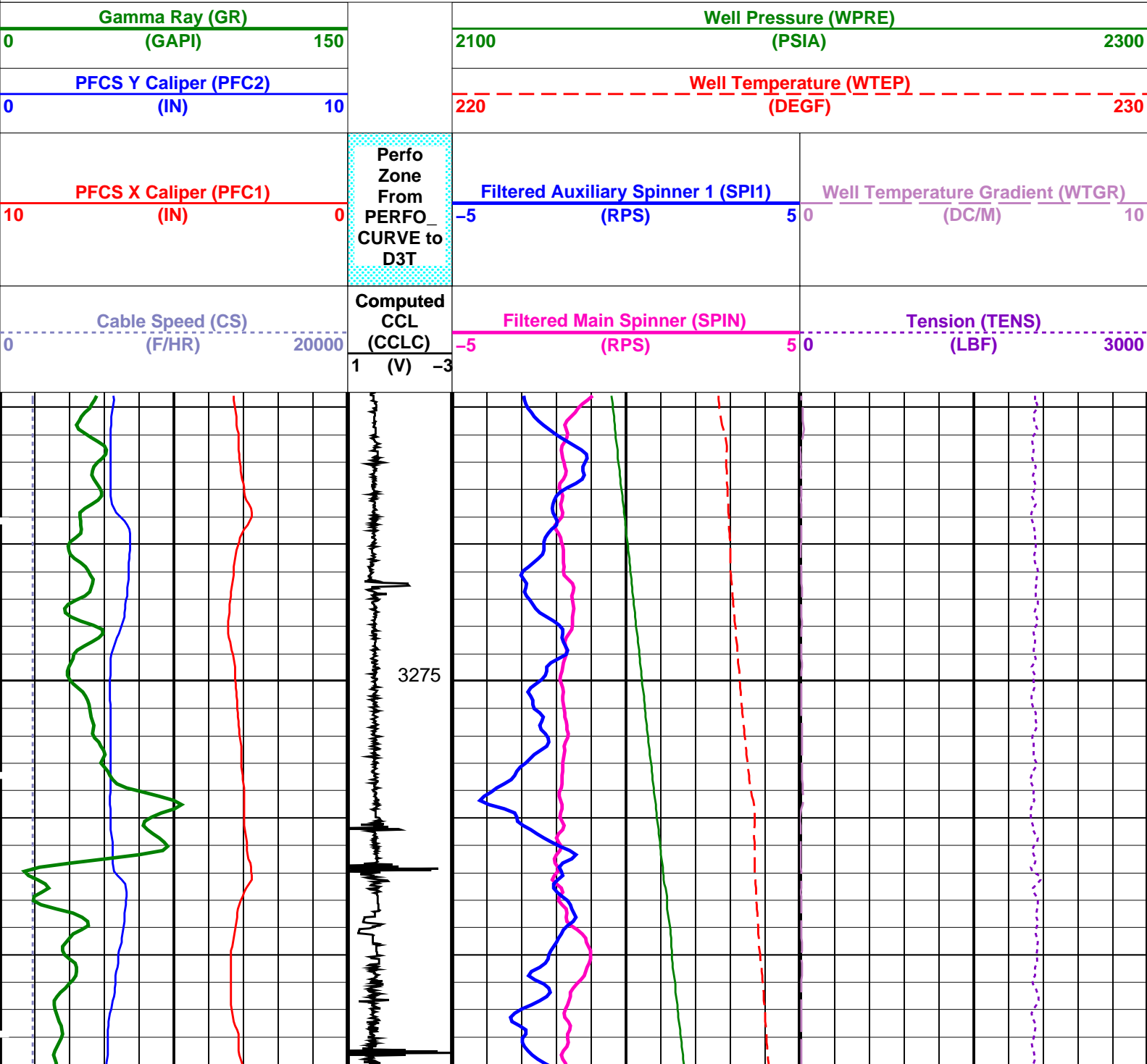
OP System Version: 14C0-302

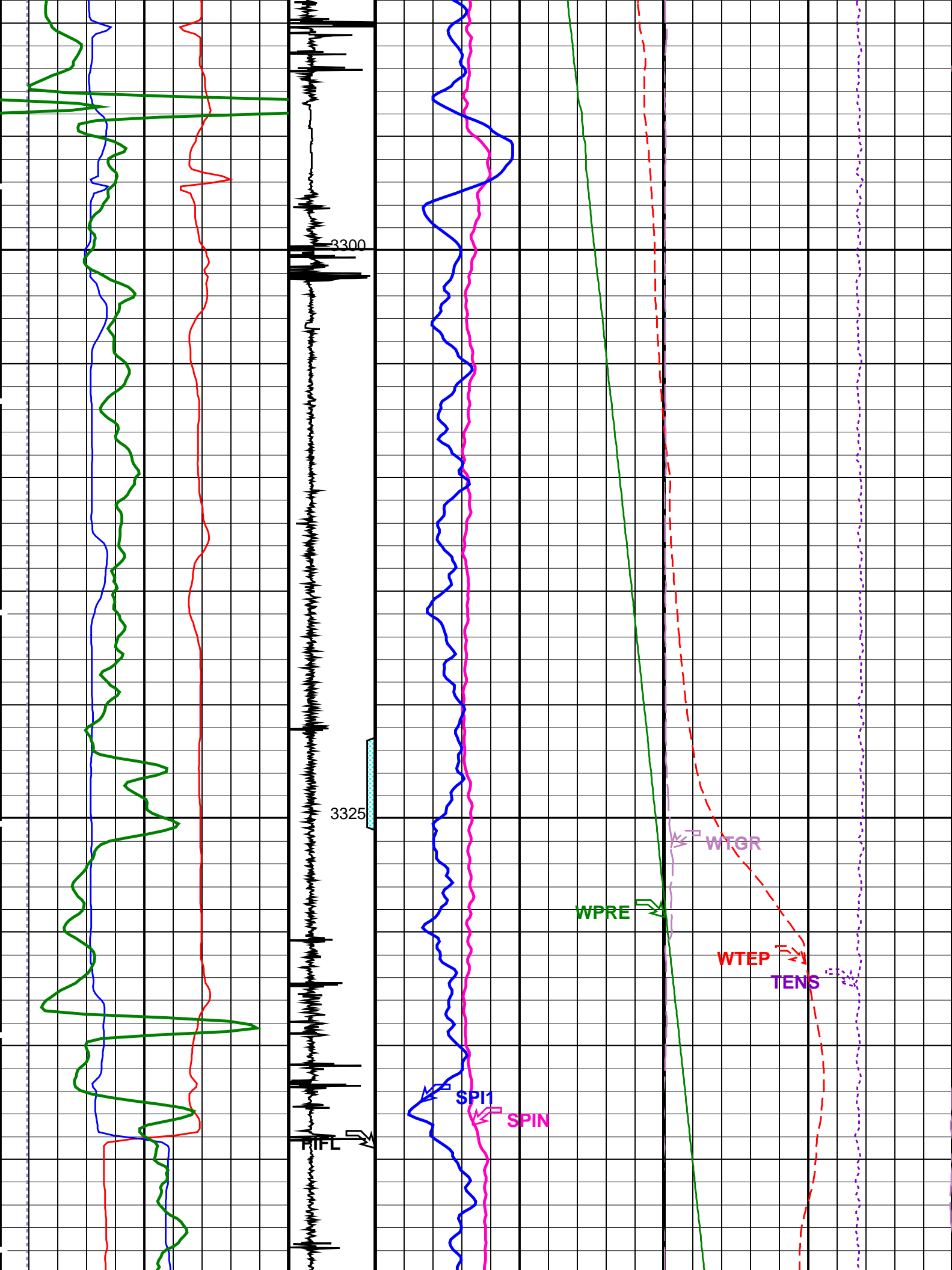
MCM

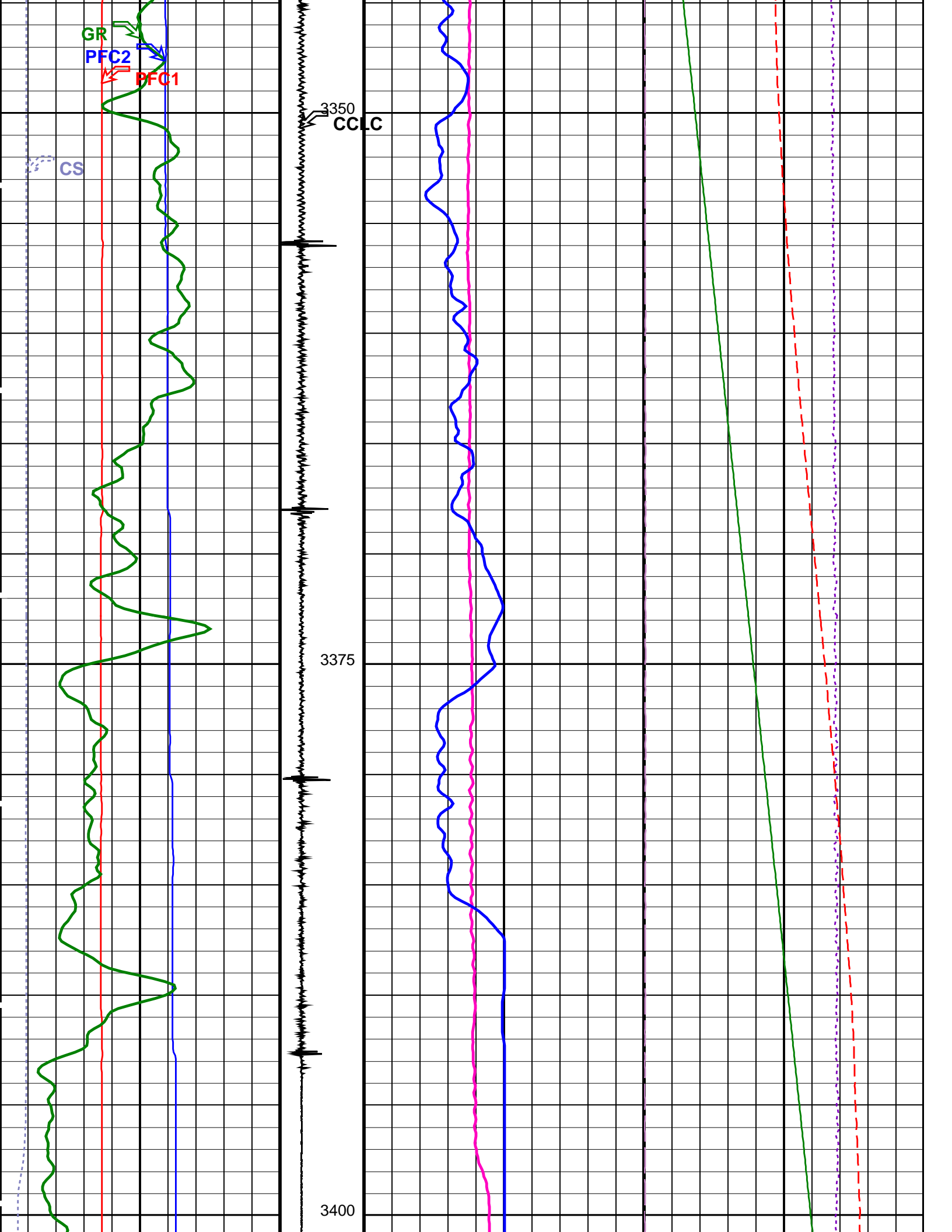
PFCS-A 14C0-302 PILS-A 14C0-302
PSPT-A/B 14C0-302

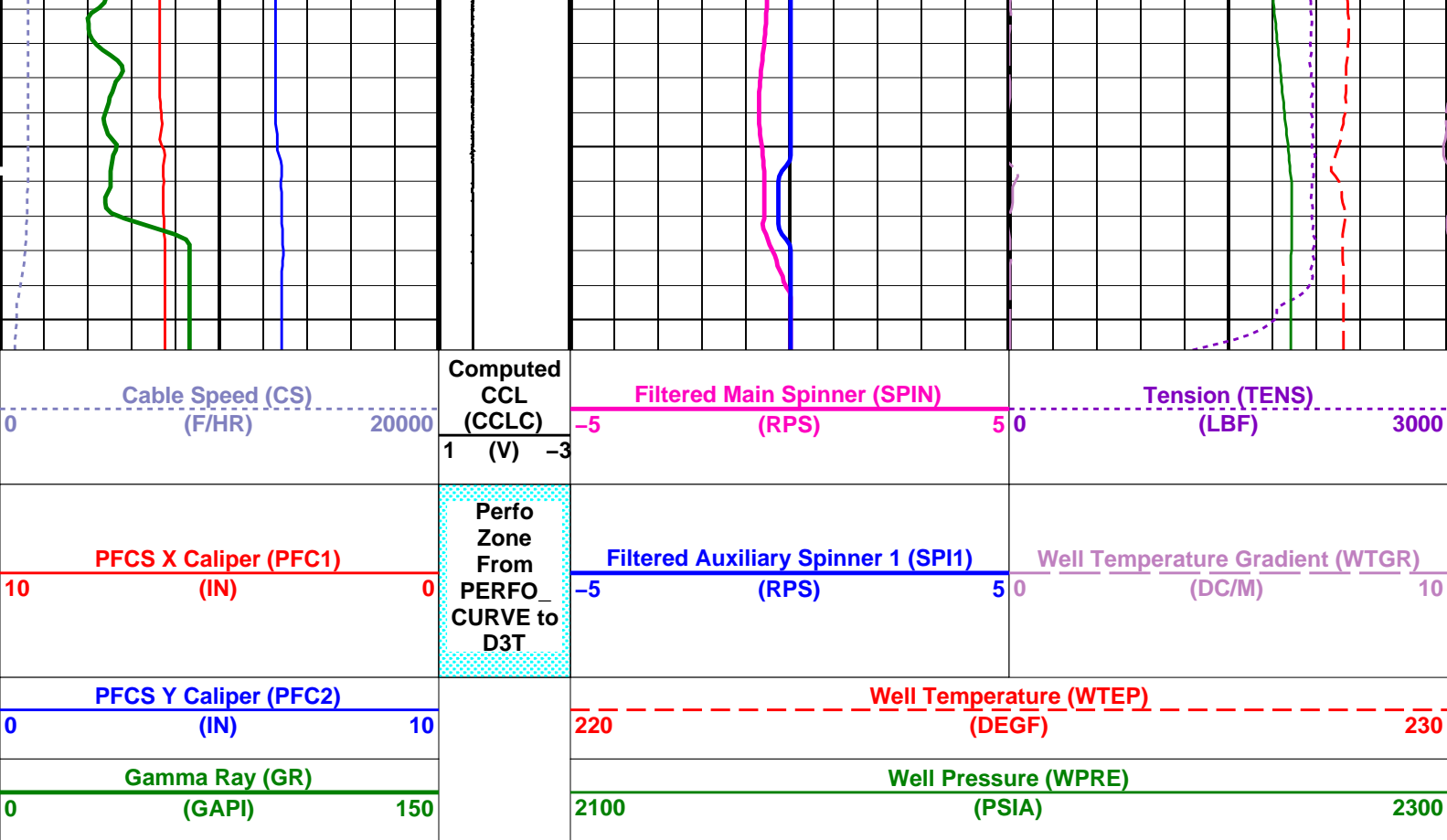
PIP SUMMARY

Time Mark Every 60 S









PIP SUMMARY

Time Mark Every 60 S

Format: PSP_1_2 Vertical Scale: 1:200 Graphics File Created: 09-Dec-2007 08:56

OP System Version: 14C0-302
MCM

PFCS-A	14C0-302	PILS-A	14C0-302
PSPT-A/B	14C0-302		

Parameters		
DLIS Name	Description	Value
PFCS-A: PSP Flow and caliper Tool		
AMOD	Spinner Filter Averaging Mode	LINEAR_AVERAGE
SDCF	Spinner Depth Constant Filter	6
SPI1	Auxiliary Spinner 1 Flowmeter Sonde	PILS-A
SPIN	Main Spinner Flowmeter Sonde	PFCS-A_TURB
PILS-A: PSP In Line Spinner Flowmeter		
AMOD	Spinner Filter Averaging Mode	LINEAR_AVERAGE
SDCF	Spinner Depth Constant Filter	6
SPI1	Auxiliary Spinner 1 Flowmeter Sonde	PILS-A
SPIN	Main Spinner Flowmeter Sonde	PFCS-A_TURB
System and Miscellaneous		
DO	Depth Offset for Playback	0.0 M
PP	Playback Processing	NORMAL

Input DLIS Files						
DEFAULT	FCS_ILS_PSP_020PUP	FN:18	PRODUCER	08-Dec-2007 14:49	3410.9 M	3264.0 M

Output DLIS Files						
DEFAULT	FCS_ILS_PSP_048PUP	FN:45	PRODUCER	09-Dec-2007 08:56		

MAXIS Field Log

Calibration and Check Summary

Measurement	Nominal	Master	Before	After	Change	Limit	Units
-------------	---------	--------	--------	-------	--------	-------	-------

PSP Flow and caliper Tool Wellsite Calibration – PFCS Caliper Calibration

Before: 8-Dec-2007 12:17

PFCS CaliperX Small Ring	3.000	N/A	2.998	N/A	N/A	N/A	IN
PFCS CaliperX Large Ring	5.500	N/A	5.459	N/A	N/A	N/A	IN
PFCS CaliperY Small Ring	3.000	N/A	3.035	N/A	N/A	N/A	IN
PFCS CaliperY Large Ring	5.500	N/A	5.535	N/A	N/A	N/A	IN

Production Services Logging Platform Wellsite Calibration – Detector Calibration

Before: 8-Dec-2007 12:18

Gamma-Ray Jig-Bkg	125.0	N/A	129.4	N/A	N/A	N/A	GAPI
-------------------	-------	-----	-------	-----	-----	-----	------

PSP Flow and caliper Tool / Equipment Identification

Primary Equipment:





PFCS Cartridge	PFCC – A	796
PFCS Caliper	Cali –	
PFCS Relative Bearing	Rela –	
PFCS Turbine Spinner	Turb –	
PFCS Fluid Holdup Electric Probes	Hold –	

Auxiliary Equipment:

PFCS Cartridge Housing	PFCH – A	796
------------------------	----------	-----

PSP Flow and caliper Tool Wellsite Calibration

PFCS Caliper Calibration

Phase	PFCS CaliperX Small Ring IN	Value	Phase	PFCS CaliperX Large Ring IN	Value	Phase	PFCS CaliperY Small Ring IN	Value
Before		2.998	Before		5.459	Before		3.035
	N/A (Minimum)	3.000 (Nominal)		N/A (Minimum)	5.500 (Nominal)		N/A (Minimum)	3.000 (Nominal)
		N/A (Maximum)			N/A (Maximum)			N/A (Maximum)
Phase	PFCS CaliperY Large Ring IN	Value						
Before		5.535						
	N/A (Minimum)	5.500 (Nominal)						
		N/A (Maximum)						

Before: 8-Dec-2007 12:17

Production Services Logging Platform / Equipment Identification

Primary Equipment:

Production Logging Platform (CQG-F)	PSPT – B	
PSP Basic Measurement Sonde (CQG_F)	PBMS – B	1835
PSP Basic measurement module	PBMS –	
PSP CCL	CCL –	
PSP GR	GR –	
PSP RTD Well Temperature	RTD_ –	
PSP Crystal Quartz Gauge Type F	CQG_ –	
PSP Telemetry and bus master cartridge	PSTC –	804

Auxiliary Equipment:

Production Services Logging Platform Wellsite Calibration

Detector Calibration

Phase	Gamma-Ray Background GAPI	Value	Phase	Gamma-Ray Jig-Bkg GAPI	Value
-------	---------------------------	-------	-------	------------------------	-------

Before			2.610	Before			129.4
0	30.00	120.0		110.0	125.0	140.0	
(Minimum)	(Nominal)	(Maximum)		(Minimum)	(Nominal)	(Maximum)	
Before: 8-Dec-2007 12:18							

Company: **Esso Australia Pty Ltd.**

Schlumberger

Well: **W-6a**

Field: **West Kingfish**

Rig: **Prod 4 / Crane**

Country: **Australia**

GR Survey

PFCS-PILS-PBM

Tubing Diagnostics