

Company: Esso Australia Pty Ltd

Well: CBA F4

Field: Cobia

Rig: Rig 22

Country: Australia

Junk Basket
Depth Determination
27-Nov-2007

Rig: Rig 22
Field: Cobia
Location: Gippsland
Well: CBA F4
Company: Esso Australia Pty Ltd

LOCATION	
Gippsland Basin Bass Strait	Elev.: K.B. 32.4 m G.L. -79 m D.F. 32.4 m
Permanent Datum:	MSL
Log Measured From:	DF
Drilling Measured From:	DF

State: Victoria	Max. Well Deviation 55 deg	Longitude 148° 18' 28.3" E	Latitude 38° 27' 03.5" S
-----------------	----------------------------	----------------------------	--------------------------

Logging Date	27-Nov-2007		
Run Number	1		
Depth Driller	3656 m		
Schlumberger Depth	3656 m		
Bottom Log Interval	3561.5 m		
Top Log Interval	3403 m		
Casing Fluid Type	Filtered Seawater		
Salinity			
Density	1.02 g/cm3		
Fluid Level	0 m		
BIT/CASING/TUBING STRING			
Bit Size	9.875 in		
From	782 m		
To	3656 m		
Casing/Tubing Size	5.500 in		
Weight	29.7 lbm/ft		
Grade	K-55		
From	3398.5 m		
To	3565 m		
Maximum Recorded Temperatures			
Logger On Bottom	27-Nov-2007	5:25	
Unit Number	3827	AUSL	
Recorded By	C. Rowand, M. Pratt		
Witnessed By	Mr J. Dean, Mr R. Schuback		

Run 1

Oil Density			
Water Salinity			
Gas Gravity			
Bo			
Bw			
1/Bg			
Bubble Point Pressure			
Bubble Point Temperature			
Solution GOR			
Maximum Deviation			55 deg
CEMENTING DATA			
Primary/Squeeze			Primary
Casing String No			
Lead Cement Type			
Volume			
Density			
Water Loss			
Additives			
Tail Cement Type			
Volume			
Density			
Water Loss			
Additives			
Expected Cement Top			
Logging Date			
Run Number			
Depth Driller			
Schlumberger Depth			
Bottom Log Interval			
Top Log Interval			
Casing Fluid Type			
Salinity			
Density			
Fluid Level			
BIT/CASING/TUBING STRING			
Bit Size			
From			
To			
Casing/Tubing Size			
Weight			
Grade			
From			
To			
Maximum Recorded Temperatures			
Logger On Bottom	Time		
Unit Number	Location		
Recorded By			
Witnessed By			

DEPTH SUMMARY LISTING

Date Created: 27-NOV-2007 20:37:48

Depth System Equipment

Depth Measuring Device	Tension Device	Logging Cable
Type: IDW-E Serial Number: 727 Calibration Date: 30-Sep-2007 Calibrator Serial Number: 727 Calibration Cable Type: 2-32ZT Wheel Correction 1: -4 Wheel Correction 2: -3	Type: CMTD-B/A Serial Number: 1711 Calibration Date: 20-Nov-2007 Calibrator Serial Number: 1173 Calibration Gain: 1.00 Calibration Offset: 3.00	Type: 2-32ZT Serial Number: 24187 Length: 6239.87 M Conveyance Method: Wireline Rig Type: Offshore_Fixed

Depth Control Parameters

Log Sequence:	Subsequent Log In the Well
Reference Log Name:	Solar Composite
Reference Log Run Number:	Not Provided
Reference Log Date:	Not Provided

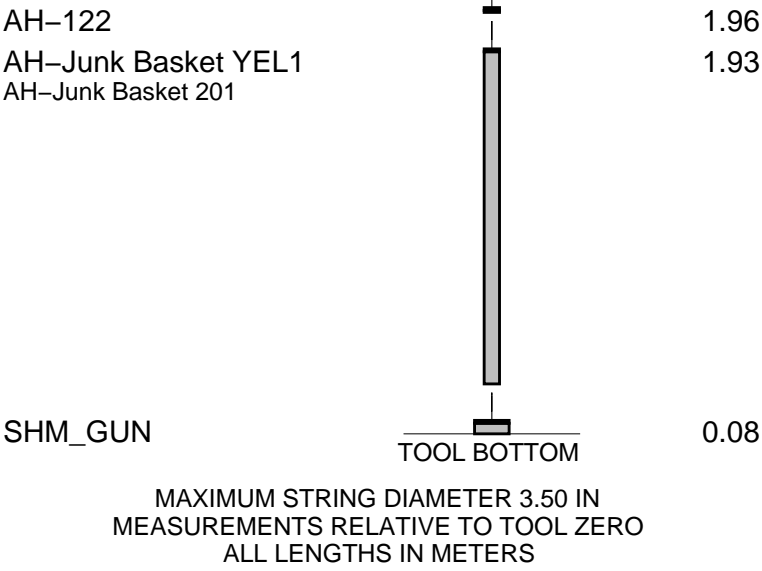
Depth Control Remarks

1. IDW used as primary depth control
2. Z Chart used as a secondary depth control
3. Log correlated to Solar composite log provided by client
4.
5.
6.

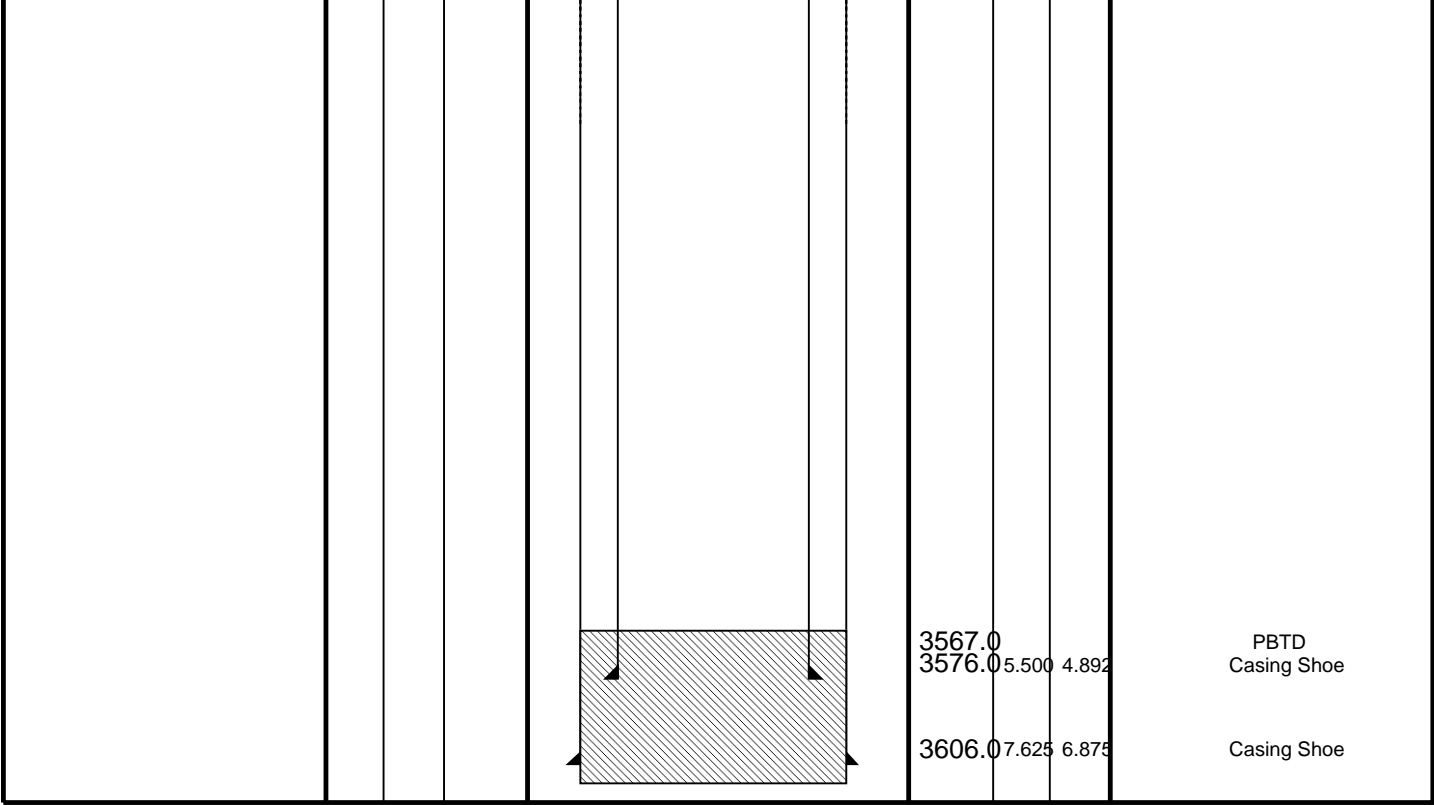
DISCLAIMER

THE USE OF AND RELIANCE UPON THIS RECORDED-DATA BY THE HEREIN NAMED COMPANY (AND ANY OF ITS AFFILIATES, PARTNERS, REPRESENTATIVES, AGENTS, CONSULTANTS AND EMPLOYEES) IS SUBJECT TO THE TERMS AND CONDITIONS AGREED UPON BETWEEN SCHLUMBERGER AND THE COMPANY, INCLUDING: (a) RESTRICTIONS ON USE OF THE RECORDED-DATA; (b) DISCLAIMERS AND WAIVERS OF WARRANTIES AND REPRESENTATIONS REGARDING COMPANY'S USE OF AND RELIANCE UPON THE RECORDED-DATA; AND (c) CUSTOMER'S FULL AND SOLE RESPONSIBILITY FOR ANY INFERENCE DRAWN OR DECISION MADE IN CONNECTION WITH THE USE OF THIS RECORDED-DATA.

OTHER SERVICES1
OS1: None
OS2:
OS3:
OS4:
OS5:
REMARKS: RUN NUMBER 1
Log correlated to Solar Composite Log undated, provided by client.
The objective of this Log is to run a Junk Basket with a 3.5" O.D guage ring down to HUD in preparation for a 2 7/8 HSD Gun at a later date.
HUD tagged @ 3561.5m + 4.5m = 3566m MDKB



Production String	(in)		(m)		Well Schematic	(m)		(in)		Casing String
	OD	ID	MD	MD		MD	OD	ID	ID	
						12.5	7.625	6.875		Casing String
						13.1	10.75	10.050		Casing String
						795.6	10.75	10.050		Casing Shoe
						3398.5	5.500	4.892		Casing String
						3398.5	7.625	5.500		Liner Hanger



Junk Basket/Correlation Pass
3.5" O.D Guage Ring

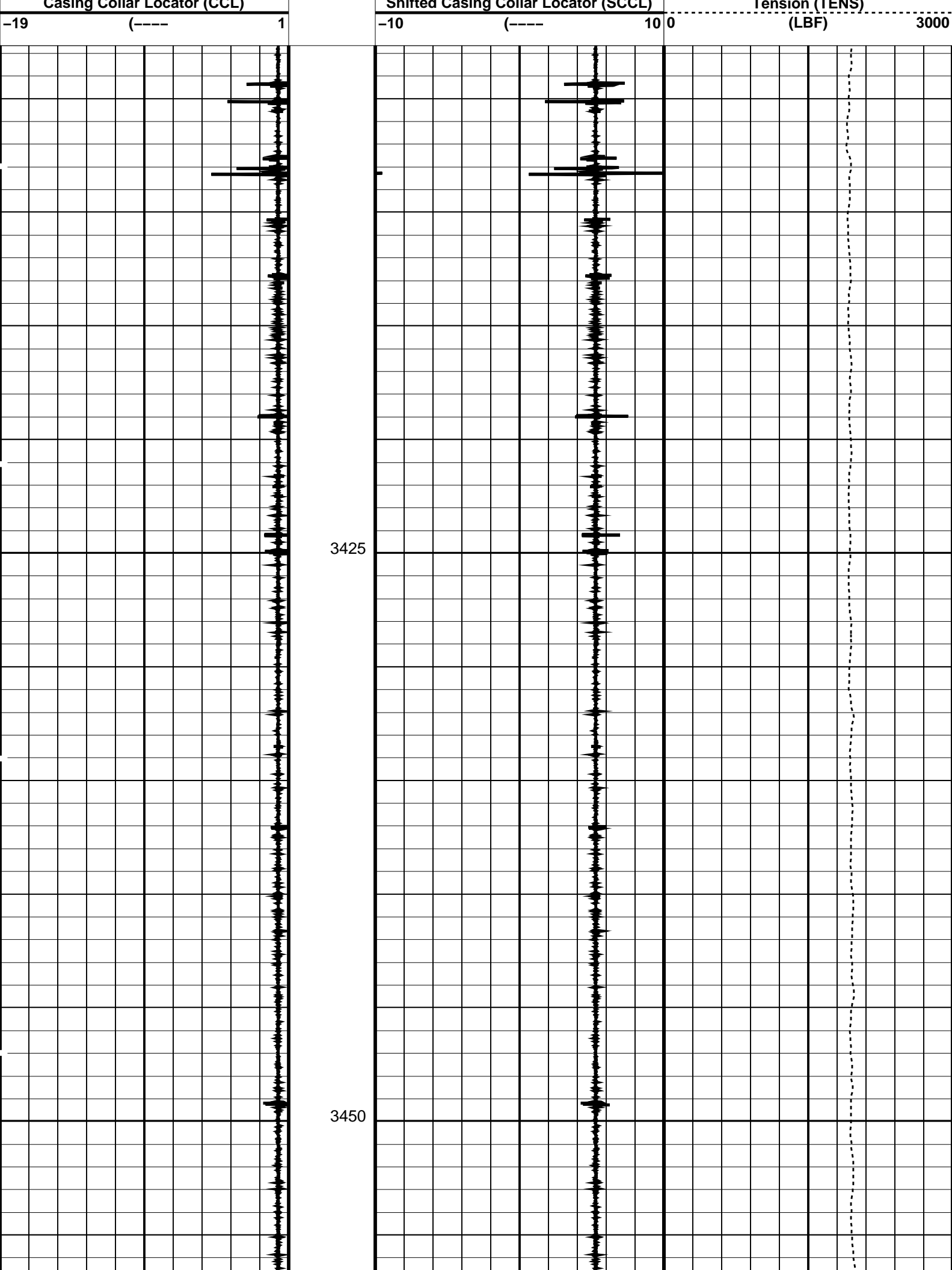
MAXIS Field Log

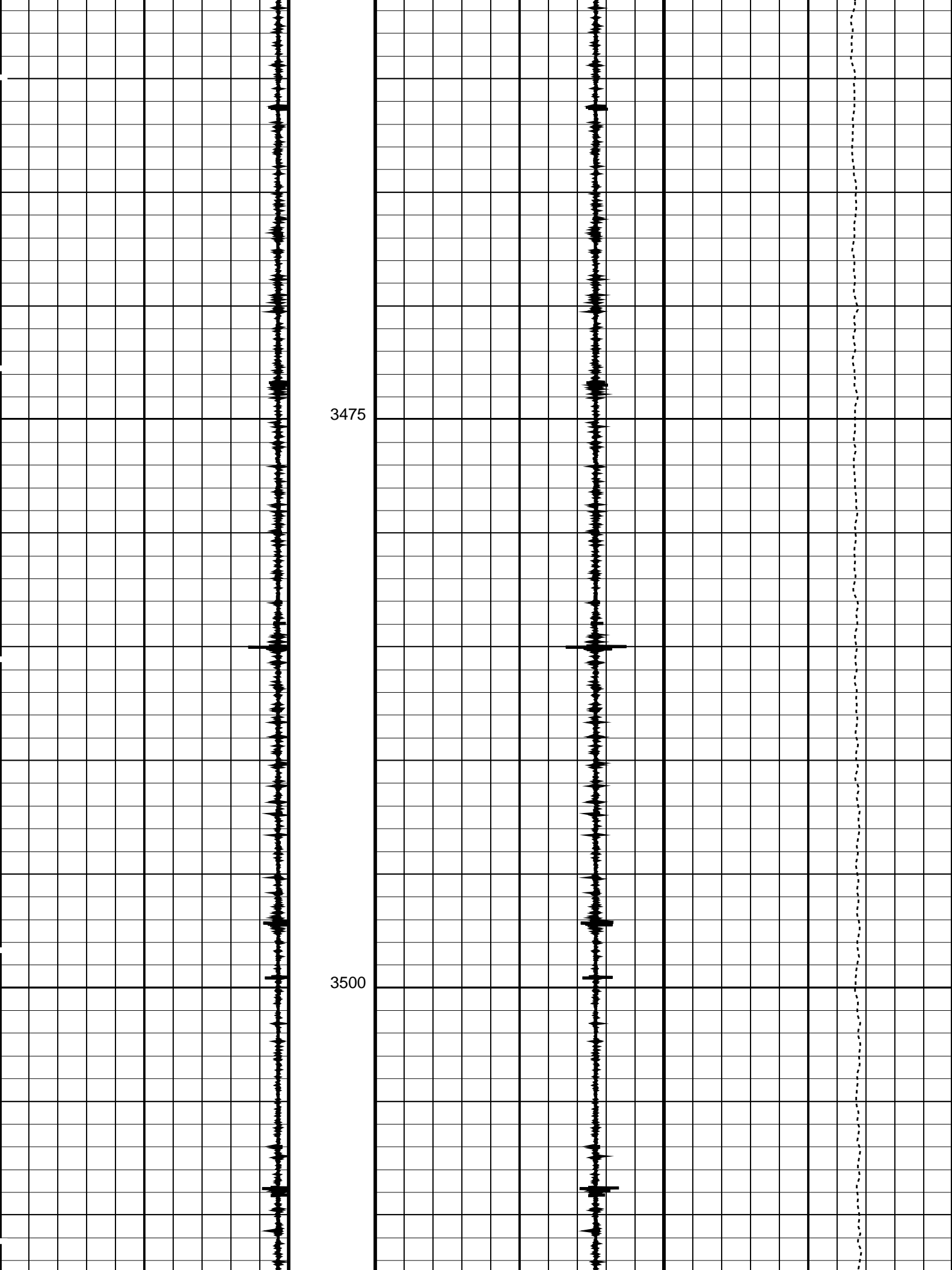
Company: Esso Australia Pty Ltd Well: CBA F4

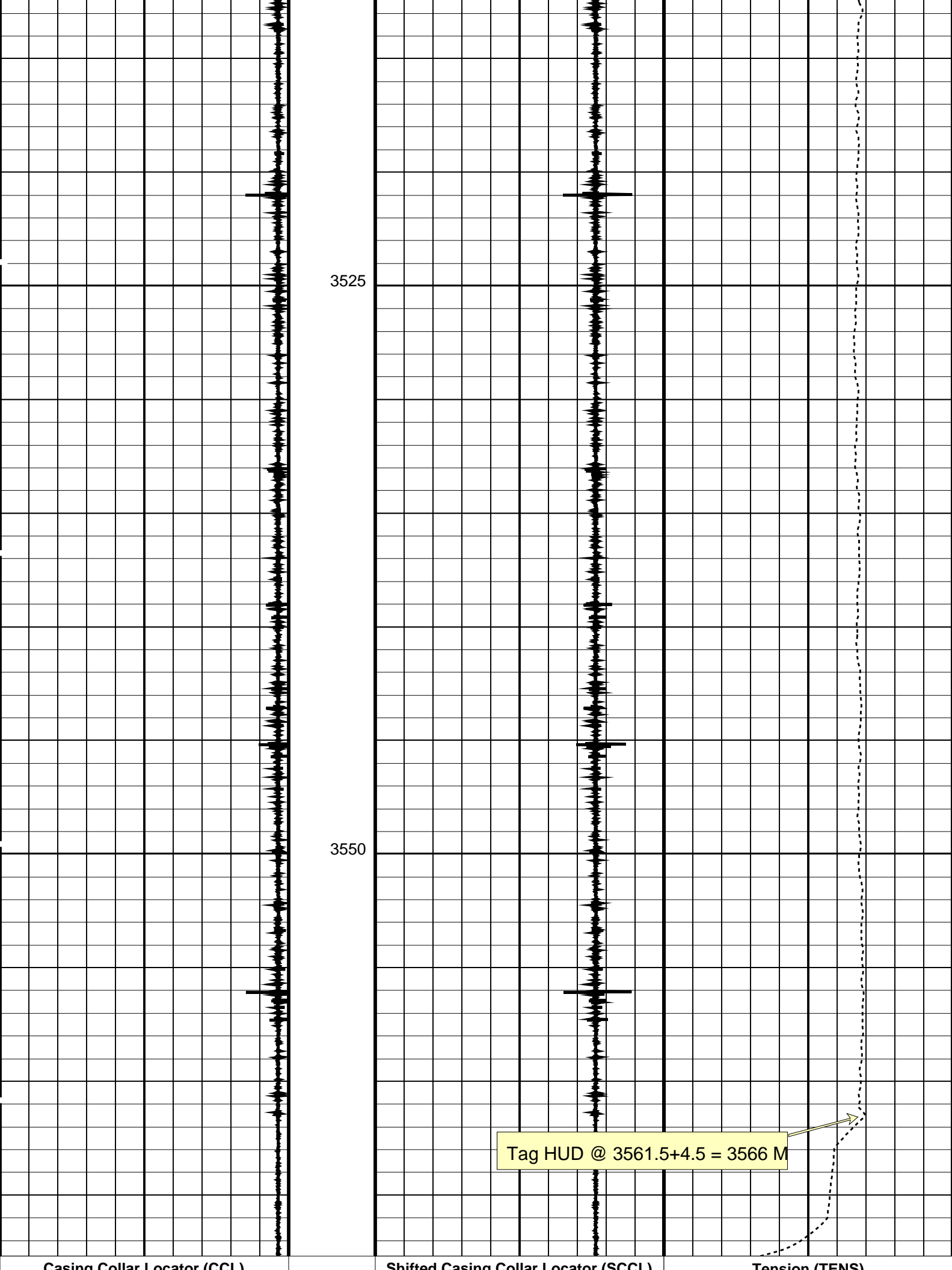
Input DLIS Files						
DEFAULT	PERFO_086LUP	FN:100	PRODUCER	27-Nov-2007 05:50	3567.7 M	3402.1 M
Output DLIS Files						
DEFAULT	PERFO_086PUP	FN:102	PRODUCER	27-Nov-2007 06:17	3567.7 M	3402.6 M

OP System Version: 15C0-309						
MCM						
SHM_GUN	15C0-309	PGGT-CC		15C0-309		

PIP SUMMARY						
Time Mark Every 60 S						
Casing Collar Locator (CCL)		Shifted Casing Collar Locator (SCCL)		Tool Joint (TENS)		







Casing Conal Locator (CCL)		Unlimited Casing Conal Locator (CCL)		Tension (TENS)	
-19	(----	1	-10	(----	10 0
				(LBF)	
				3000	
PIP SUMMARY					
Time Mark Every 60 S					
Parameters					
DLIS Name		Description		Value	
System and Miscellaneous					
DO		Depth Offset for Playback		0.0	M
PP		Playback Processing		NORMAL	
Format: PERFO		Vertical Scale: 1:200		Graphics File Created: 27-Nov-2007 06:17	
OP System Version: 15C0-309					
MCM					
SHM_GUN	15C0-309	PGGT-CC	15C0-309		
Input DLIS Files					
DEFAULT	PERFO_086LUP	FN:100	PRODUCER	27-Nov-2007 05:50	3567.7 M 3402.1 M
Output DLIS Files					
DEFAULT	PERFO_086PUP	FN:102	PRODUCER	27-Nov-2007 06:17	

Company:	Esso Australia Pty Ltd	Schlumberger
Well:	CBA F4	
Field:	Cobia	
Rig:	Rig 22	
Country:	Australia	
	Junk Basket	
	Depth Determination	
	27-Nov-2007	