

Company: Esso Australia Pty Ltd

Well: CBA A19
Field: Cobia
Rig: Rig 22

Country: Australia

3.65" Powercutter
Tubing Cut Record
01-Dec-2007

LOCATION

Gippsland
Basin
Bass Strait

Elev.: K.B. 32.4 m
G.L. -79 m
D.F. 32.4 m

Permanent Datum: _____
Log Measured From: _____
Drilling Measured From: _____

MSL _____
DF _____
DF _____

Elev.: 0 m
32.4 m above Perm. Datum

State: Victoria

Max. Well Deviation
1.3 deg

Longitude
148° 18' 28.3" E

Latitude
38° 27' 03.5" S

Rig: Rig 22
Field: Cobia
Location: Gippsland
Well: CBA A19
Company: Esso Australia Pty Ltd

Logging Date			1-Dec-2007		
Run Number			1		
Depth Driller			2478 m		
Schlumberger Depth			2375.23 m		
Bottom Log Interval			2365 m		
Top Log Interval			2365 m		
Casing Fluid Type			Sea water		
Salinity					
Density			1.02 g/cm3		
Fluid Level					
BIT/CASING/TUBING STRING					
Bit Size			9.875 in		
From			599 m		
To			2478 m		
Casing/Tubing Size			4.500 in		
Weight			12.75 lbm/ft		
Grade			L-80		
From			11.83 m		
To			2376.4 m		
Maximum Recorded Temperatures					
Logger On Bottom		Time	1-Dec-2007	5:00	
Unit Number		Location	3827	AUSL	
Recorded By			M.Pratt, A. Arman,		
Witnessed By			Mr B. White, Mr J. Dean		

Run 1					
OIL DATA					
Oil Density					
Water Salinity					
Gas Gravity					
Bo					
Bw					
1/Bg					
Bubble Point Pressure					
Bubble Point Temperature					
Solution GOR					
Maximum Deviation				1.3 deg	
CEMENTING DATA					
Primary/Squeeze				Primary	
Casing String No					
Lead Cement Type					
Volume					
Density					
Water Loss					
Additives					
Tail Cement Type					
Volume					
Density					
Water Loss					
Additives					
Expected Cement Top					
Logging Date					
Run Number					
Depth Driller					
Schlumberger Depth					
Bottom Log Interval					
Top Log Interval					
Casing Fluid Type					
Salinity					
Density					
Fluid Level					
BIT/CASING/TUBING STRING					
Bit Size					
From					
To					
Casing/Tubing Size					
Weight					
Grade					
From					
To					
Maximum Recorded Temperatures					
Logger On Bottom		Time			
Unit Number		Location			
Recorded By					
Witnessed By					

DEPTH SUMMARY LISTING

Depth System Equipment

Depth Control Parameters	
--------------------------	--

Depth Control Remarks	
-----------------------	--

- | |
|---|
| <ol style="list-style-type: none">1. IDW used as primary depth control2. Z Chart used as a secondary depth control3. Log correlated to Tubing Tally dated 23–Aug–2007 provided by client4.5.6. |
|---|

THE USE OF AND RELIANCE UPON THIS RECORDED-DATA BY THE HEREIN NAMED COMPANY (AND ANY OF ITS AFFILIATES, PARTNERS, REPRESENTATIVES, AGENTS, CONSULTANTS AND EMPLOYEES) IS SUBJECT TO THE TERMS AND CONDITIONS AGREED UPON BETWEEN SCHLUMBERGER AND THE COMPANY, INCLUDING: (a) RESTRICTIONS ON USE OF THE RECORDED-DATA; (b) DISCLAIMERS AND WAIVERS OF WARRANTIES AND REPRESENTATIONS REGARDING COMPANY'S USE OF AND RELIANCE UPON THE RECORDED-DATA; AND (c) CUSTOMER'S FULL AND SOLE RESPONSIBILITY FOR ANY INFERENCE DRAWN OR DECISION MADE IN CONNECTION WITH THE USE OF THIS RECORDED-DATA.








Cutting Depth: 2365m MDKB

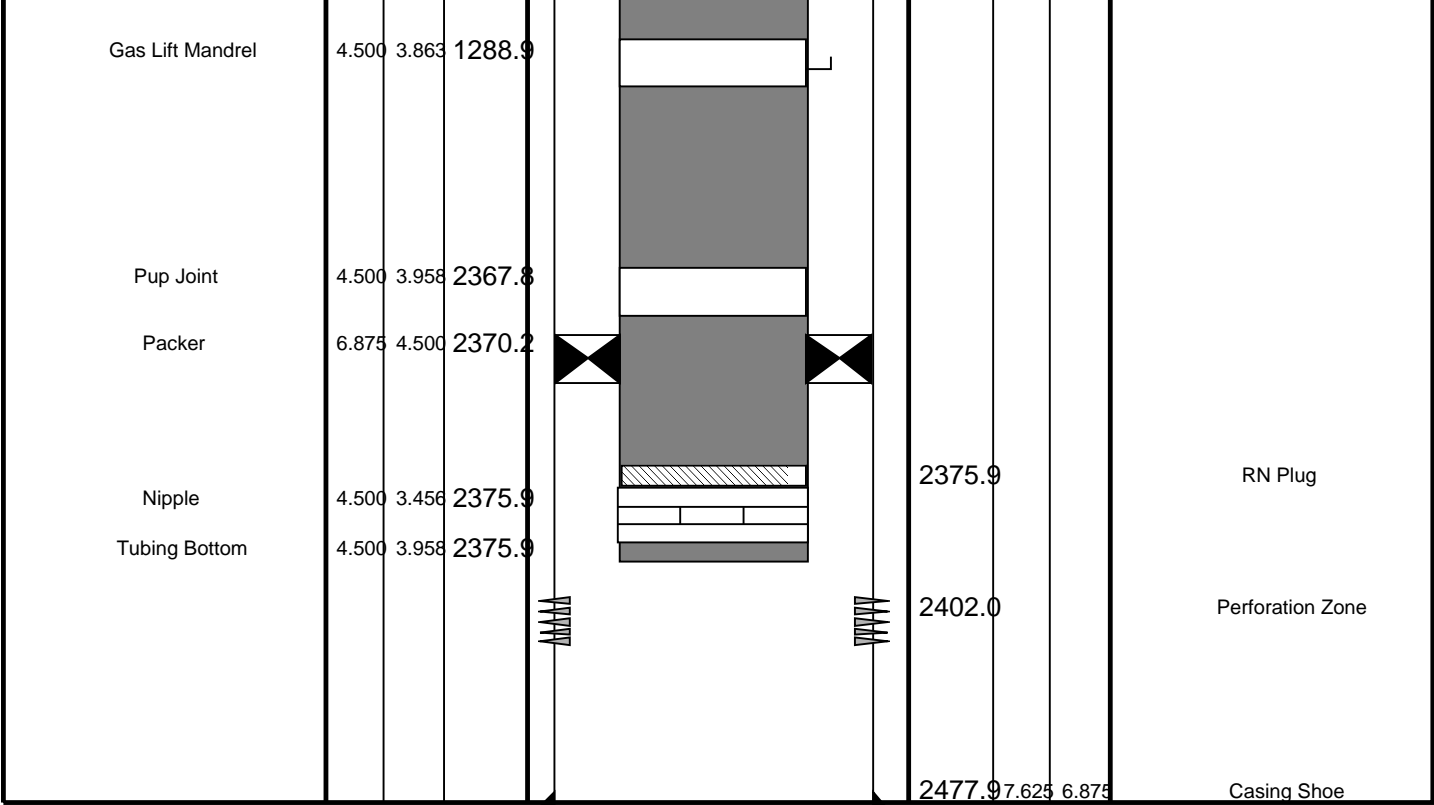
CCL Stop Depth: 2362.5m MDKB

Crew: (Days) G. Brady & P. Battems
(Nights) G. Martin & S. Kiss

RUN 1 SERVICE ORDER #: PROGRAM VERSION: 15C0-309 FLUID LEVEL:			RUN 2 SERVICE ORDER #: PROGRAM VERSION: FLUID LEVEL:		
LOGGED INTERVAL	START	STOP	LOGGED INTERVAL	START	STOP

EQUIPMENT DESCRIPTION	
1	...
2	...
3	...
4	...
5	...
6	...
7	...
8	...
9	...
10	...
11	...
12	...
13	...
14	...
15	...
16	...
17	...
18	...
19	...
20	...
21	...
22	...
23	...
24	...
25	...
26	...
27	...
28	...
29	...
30	...
31	...
32	...
33	...
34	...
35	...
36	...
37	...
38	...
39	...
40	...
41	...
42	...
43	...
44	...
45	...
46	...
47	...
48	...
49	...
50	...
51	...
52	...
53	...
54	...
55	...
56	...
57	...
58	...
59	...
60	...
61	...
62	...
63	...
64	...
65	...
66	...
67	...
68	...
69	...
70	...
71	...
72	...
73	...
74	...
75	...
76	...
77	...
78	...
79	...
80	...
81	...
82	...
83	...
84	...
85	...
86	...
87	...
88	...
89	...
90	...
91	...
92	...
93	...
94	...
95	...
96	...
97	...
98	...
99	...
100	...

RUN 1		RUN 2	
SURFACE EQUIPMENT			
WITM (SHM)			
DOWNHOLE EQUIPMENT			
AH-SWBS YEL1 AH-SWBS 785		7.20	
AH-SWBS YEL1 AH-SWBS 786		6.50	
AH-SWBS YEL1 AH-SWBS 787		5.80	
AH-SWHS YEL1 AH-SWHS 759		5.11	
EQF-46 YEL1 EQF-46 3001		4.71	
CCL-XA YEL1 CCL-XA 7202		2.88	
Tension CCL ____ TOOL ZERO			



3.65" Powercutter
Cutting Pass

MAXIS Field Log

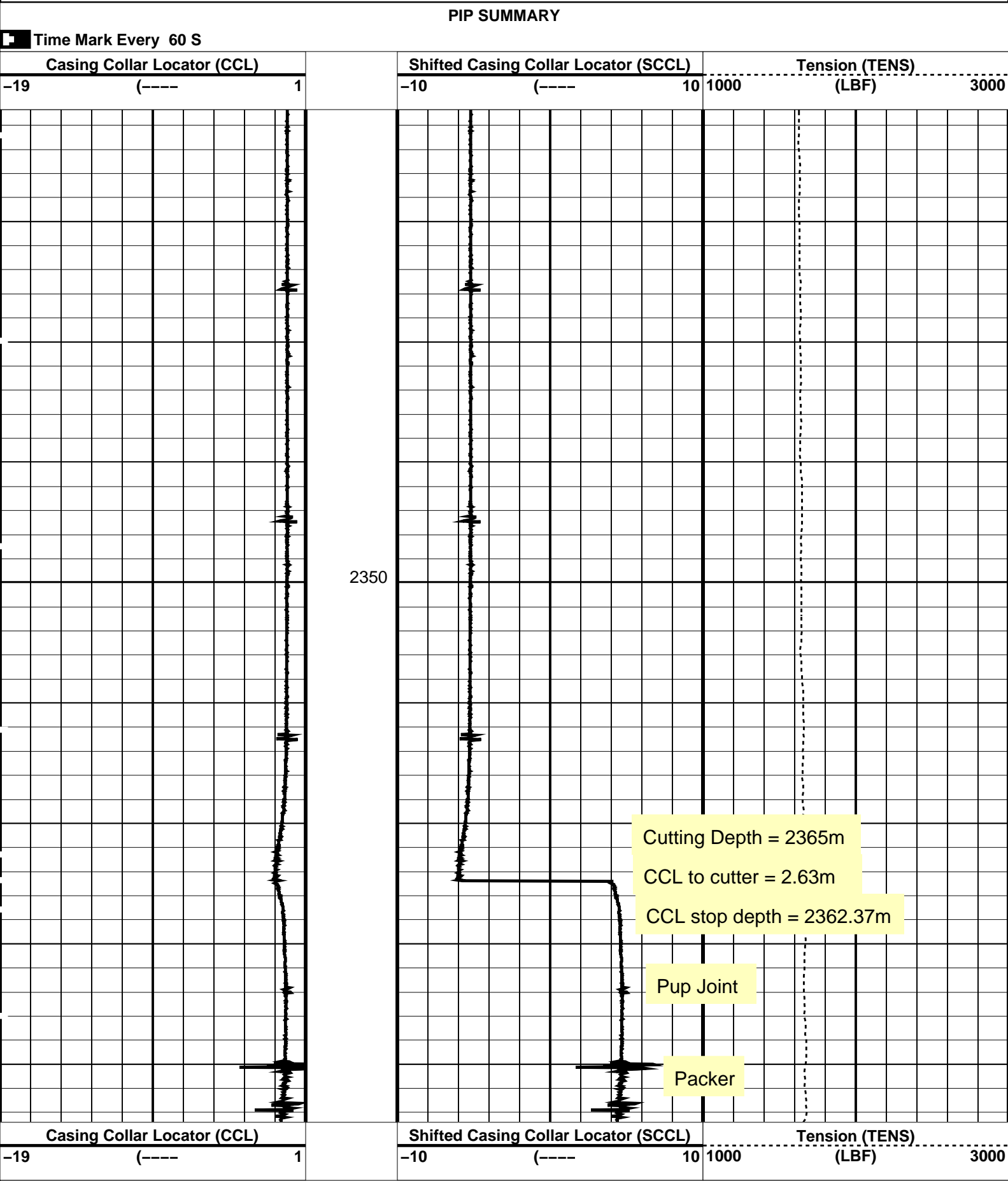
PERFO2 Operational Summary Listing

Device	Status	Req Depth (M)	Obs Depth (M)	Time Used
GUN1	Used	2365.0	2365.0	Sat Dec 01 06:30:18 2007

Company: Esso Australia Pty Ltd

Well: CBA A19

Output DLIS Files						
DEFAULT	PERFO_022LUP	FN:21	PRODUCER	01-Dec-2007 06:25	2372.4 M	2330.3 M



DLIS Name	Description	Value
CCLD	CCL-XA: Casing Collar Locator	12 IN
CCLT	CCL reset delay	0.3 V
	CCL Detection Level	
Format: PERFO	Vertical Scale: 1:200	Graphics File Created: 01-Dec-2007 06:25
OP System Version: 15C0-309		
MCM		
SHM_GUN	15C0-309	CCL-XA 15C0-309
Output DLIS Files		
DEFAULT	PERFO_022LUP	FN:21 PRODUCER 01-Dec-2007 06:25

Schlumberger

3.65" Powercutter Correlation Log

MAXIS Field Log

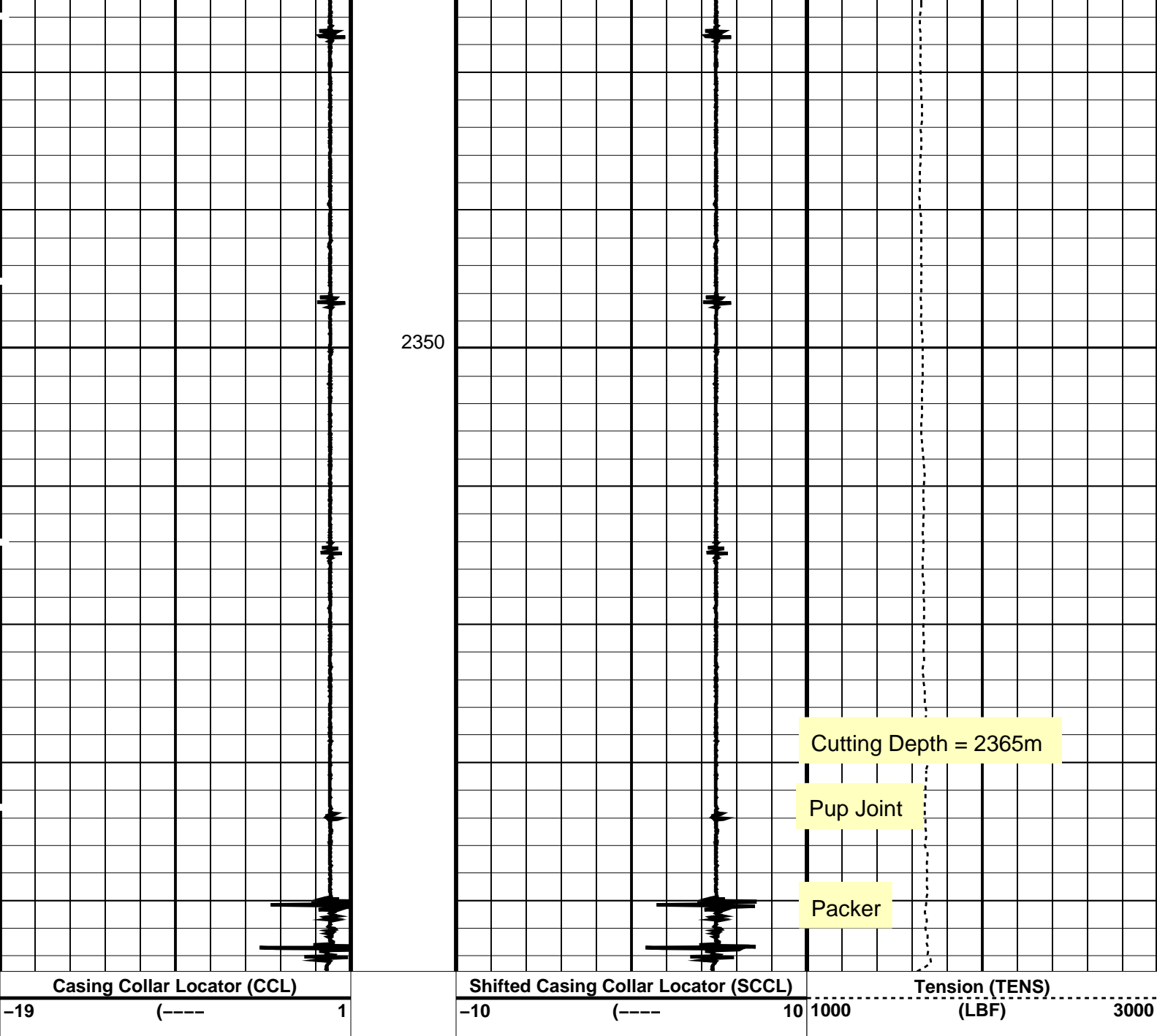
Company: Esso Australia Pty Ltd Well: CBA A19

Output DLIS Files		
DEFAULT	PERFO_021LUP	FN:20 PRODUCER 01-Dec-2007 06:05 2372.6 M 2317.9 M
OP System Version: 15C0-309		
MCM		
SHM_GUN	15C0-309	CCL-XA 15C0-309

PIP SUMMARY

Time Mark Every 60 S

Casing Collar Locator (CCL)	Shifted Casing Collar Locator (SCCL)	Tension (TENS)
-19 (----) 1	-10 (----) 10	1000 (LBF) 3000
<div>2325</div>		



PIP SUMMARY

Time Mark Every 60 S

Parameters

DLIS Name	Description	Value
CCLD	CCL reset delay	12 IN
CCLT	CCL Detection Level	0.3 V

Format: PERFO Vertical Scale: 1:200 Graphics File Created: 01-Dec-2007 06:05

OP System Version: 15C0-309

MCM

SHM_GUN 15C0-309 CCL-XA 15C0-309

Output DLIS Files

DEFAULT PERFO_021LUP FN:20 PRODUCER 01-Dec-2007 06:05

Well: **CBA A19**
Field: **Cobia**
Rig: **Rig 22**
Country: **Australia**

3.65" Powercutter
Tubing Cut Record
01-Dec-2007