

Company: CO2CRC Pilot Project Ltd.

Well: Naylor 1

Field: Naylor

Rig: Crane

Country: Australia

Perforation Record
2" HSD
2.775 Drift Run

LOCATION		
Otway Basin		Elev.: K.B. 51.09 m
Port Campbell Embayment		G.L. 46.4 m
		D.F. 51.09 m
Permanent Datum:	Mean Sea Level	Elev.: 51.09 m
Log Measured From:	Original D.F.	-51.1 m above Perm. Datum
Drilling Measured From:	Original D.F.	
State: Victoria	Max. Well Deviation 0 deg	Longitude 142° 48'30.43" E
		Latitude 38° 31' 47.26" S

Rig: Crane
Field: Naylor
Location: Otway Basin
Well: Naylor 1
Company: CO2CRC Pilot Project Ltd.

Logging Date	22-Sep-2007	
Run Number	1	
Depth Driller	2152 m	
Schlumberger Depth	2059.4 m	
Bottom Log Interval	2055 m	
Top Log Interval	2039 m	
Casing Fluid Type	Brine	
Salinity		
Density	1 g/cm3	
Fluid Level		
BIT/CASING/TUBING STRING		
Bit Size	6.750 in	
From	485 m	
To	2175 m	
Casing/Tubing Size	3.500 in	
Weight	9.2 lbm/ft	
Grade	13Cr95	
From	0 m	
To	2169 m	
Maximum Recorded Temperatures		
Logger On Bottom	22-Sep-2007	14:30
Unit Number	3140	AUSL
Recorded By	B.Donahoe, R. Clark, M. Soares, R. Sani	
Witnessed By	Mr. Terry Greaney	

PVT DATA			Run 1	Run 2	R
Oil Density					
Water Salinity					
Gas Gravity					
Bo					
Bw					
1/Bg					
Bubble Point Pressure					
Bubble Point Temperature					
Solution GOR					
Maximum Deviation	0 deg				
CEMENTING DATA					
Primary/Squeeze	Primary				
Casing String No					
Lead Cement Type					
Volume					
Density					
Water Loss					
Additives					
Tail Cement Type					
Volume					
Density					
Water Loss					
Additives					
Expected Cement Top					
Logging Date					
Run Number					
Depth Driller					
Schlumberger Depth					
Bottom Log Interval					
Top Log Interval					
Casing Fluid Type					
Salinity					
Density					
Fluid Level					
BIT/CASING/TUBING STRING					
Bit Size					
From					
To					
Casing/Tubing Size					
Weight					
Grade					
From					
To					
Maximum Recorded Temperatures					
Logger On Bottom					
Unit Number					
Recorded By					
Witnessed By					

Date Created: 5-OCT-2007 8:51:49

Logging Cable

Type:	7-42ZV-XS
Serial Number:	21034
Length:	5775.05 M
Conveyance Method:	Wireline
Rig Type:	LAND

Log Sequence:	Subsequent Log In the Well
Reference Log Name:	RST-Sigma Log
Reference Log Run Number:	
Reference Log Date:	12-May-2006

1. All Schlumberger Depth Control Policies followed.
2. Correlated to RST-Sigma Log of 12-May-2006.
3. IDW used as Primary Depth Control
4. Z-Chart used as Secondary Depth Control.
- 5.
- 6.

THE USE OF AND RELIANCE UPON THIS RECORDED-DATA BY THE HEREIN NAMED COMPANY (AND ANY OF ITS AFFILIATES, PARTNERS, REPRESENTATIVES, AGENTS, CONSULTANTS AND EMPLOYEES) IS SUBJECT TO THE TERMS AND CONDITIONS AGREED UPON BETWEEN SCHLUMBERGER AND THE COMPANY, INCLUDING: (a) RESTRICTIONS ON USE OF THE RECORDED-DATA; (b) DISCLAIMERS AND WAIVERS OF WARRANTIES AND REPRESENTATIONS REGARDING COMPANY'S USE OF AND RELIANCE UPON THE RECORDED-DATA; AND (c) CUSTOMER'S FULL AND SOLE RESPONSIBILITY FOR ANY INFERENCE DRAWN OR DECISION MADE IN CONNECTION WITH THE USE OF THIS RECORDED-DATA.

OTHER SERVICES2
OS1:
OS2:
OS3:
OS4:
OS5:

REMARKS: RUN NUMBER 2

Correlated to RST Sigma Log of 12-May-2006.

RIH with 2"HSD HMX Powerjet Omega 2006 6spf and perforate interval 2039 –2055m.










Gun1 : 2046.9 – 2055m

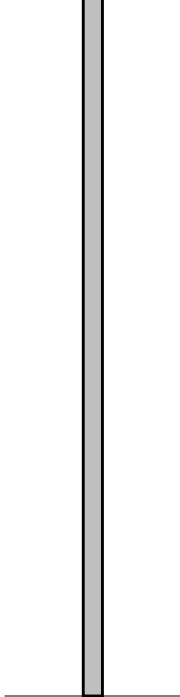
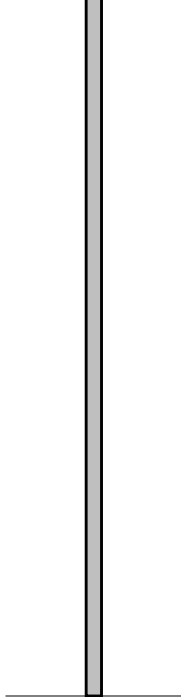
Due to probable hydrate we ran a 2" Drift run between Gun runs.
After Gun2 we ran the 2" Drift to HUD. Then followed with a 2.75"
Drift to the Casing Patch
Due to the presence of Ground Voltage 0.4v we had to use
Secure gun firing system.

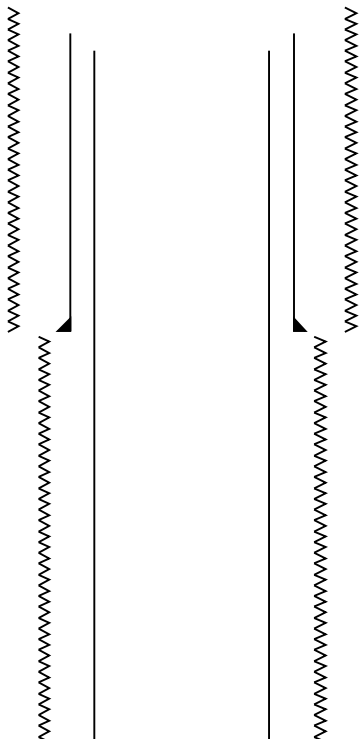
Operators
Glen Humphreys
Rhys Cochrane

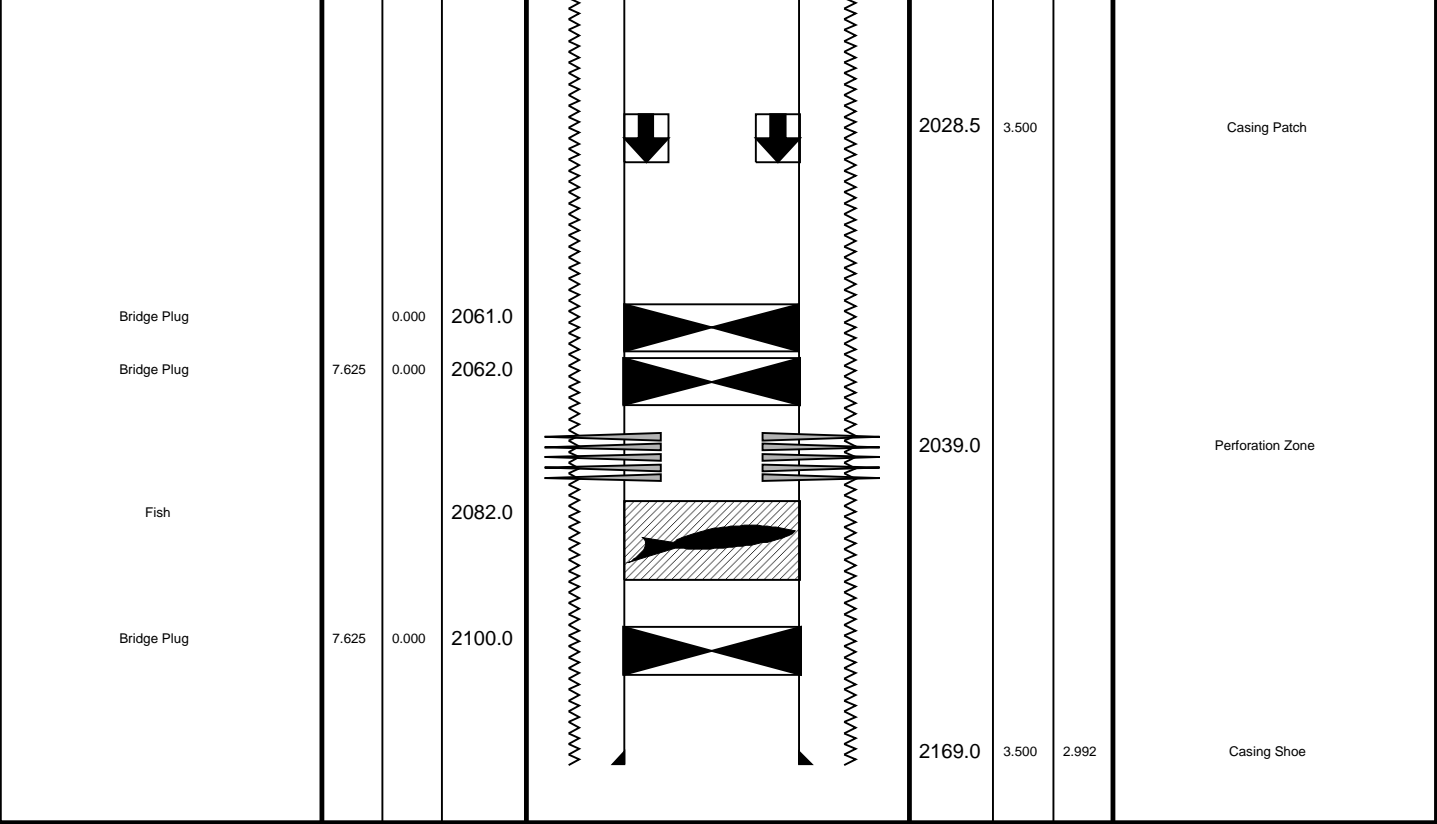
RUN 1			RUN 2		
SERVICE ORDER #: PROGRAM VERSION: FLUID LEVEL:			SERVICE ORDER #: PROGRAM VERSION: FLUID LEVEL:		
LOGGED INTERVAL	START	STOP	LOGGED INTERVAL	START	STOP

EQUIPMENT DESCRIPTION

RUN 1			RUN 2		
SURFACE EQUIPMENT			SURFACE EQUIPMENT		
SHM-EA			WITM (SHM)		
DOWNHOLE EQUIPMENT			DOWNHOLE EQUIPMENT		
MH-22 MH-22		10.77	MH-22 MH-22		10.39
CCL-L CCL-L 4515	Tension CCL  — TOOL ZERO	10.29	CCL-L CCL-L	Tension CCL  — TOOL ZERO	9.91
EQF-43 EQF-43		9.83	AH-Crossover AH-2.775" Crossover		9.45 9.30
			AH-Drift weight AH-Drift weight		9.14
SHM_GUN GUN		8.00			
			AH-Drift weight		4.57

 <p>TOOL BOTTOM</p> <p>MAXIMUM STRING DIAMETER 2.00 IN MEASUREMENTS RELATIVE TO TOOL ZERO ALL LENGTHS IN METERS</p>	<p>AH-Drift weight AH-Drift weight</p>  <p>TOOL BOTTOM</p> <p>MAXIMUM STRING DIAMETER 2.78 IN MEASUREMENTS RELATIVE TO TOOL ZERO ALL LENGTHS IN METERS</p>
--	---

Production String	(in)		(m)	Well Schematic	(m)	(in)		Casing String
	OD	ID	MD		MD	OD	ID	
					<div>0.0</div> <div>481.0</div> <div>481.0</div>	<div>3.500</div> <div>7.625</div> <div>6.750</div>	<div>2.992</div>	<div>Casing String</div> <div>Casing Shoe</div> <div>Borehole Segment</div>



Drift Run 3 2.775"

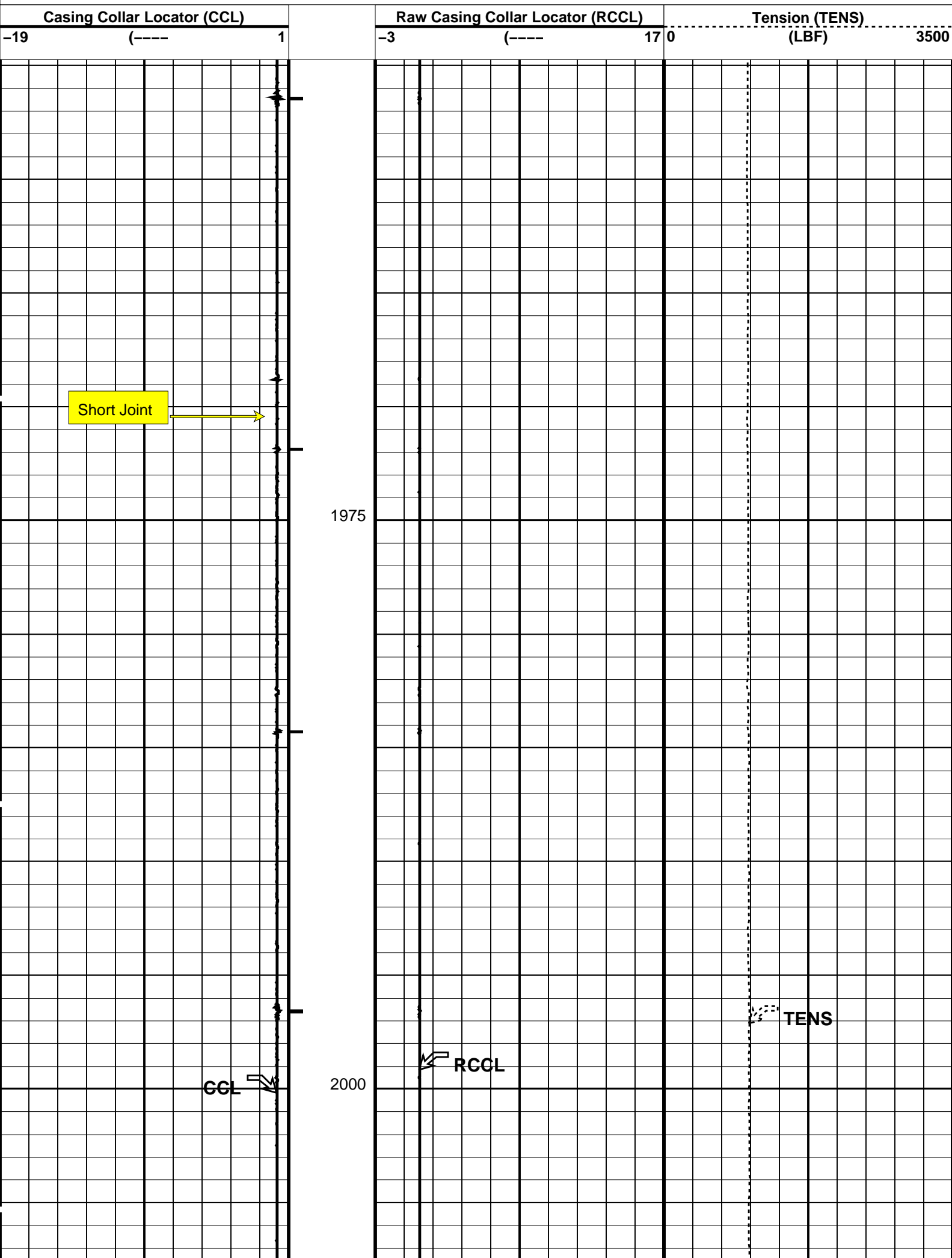
MAXIS Field Log

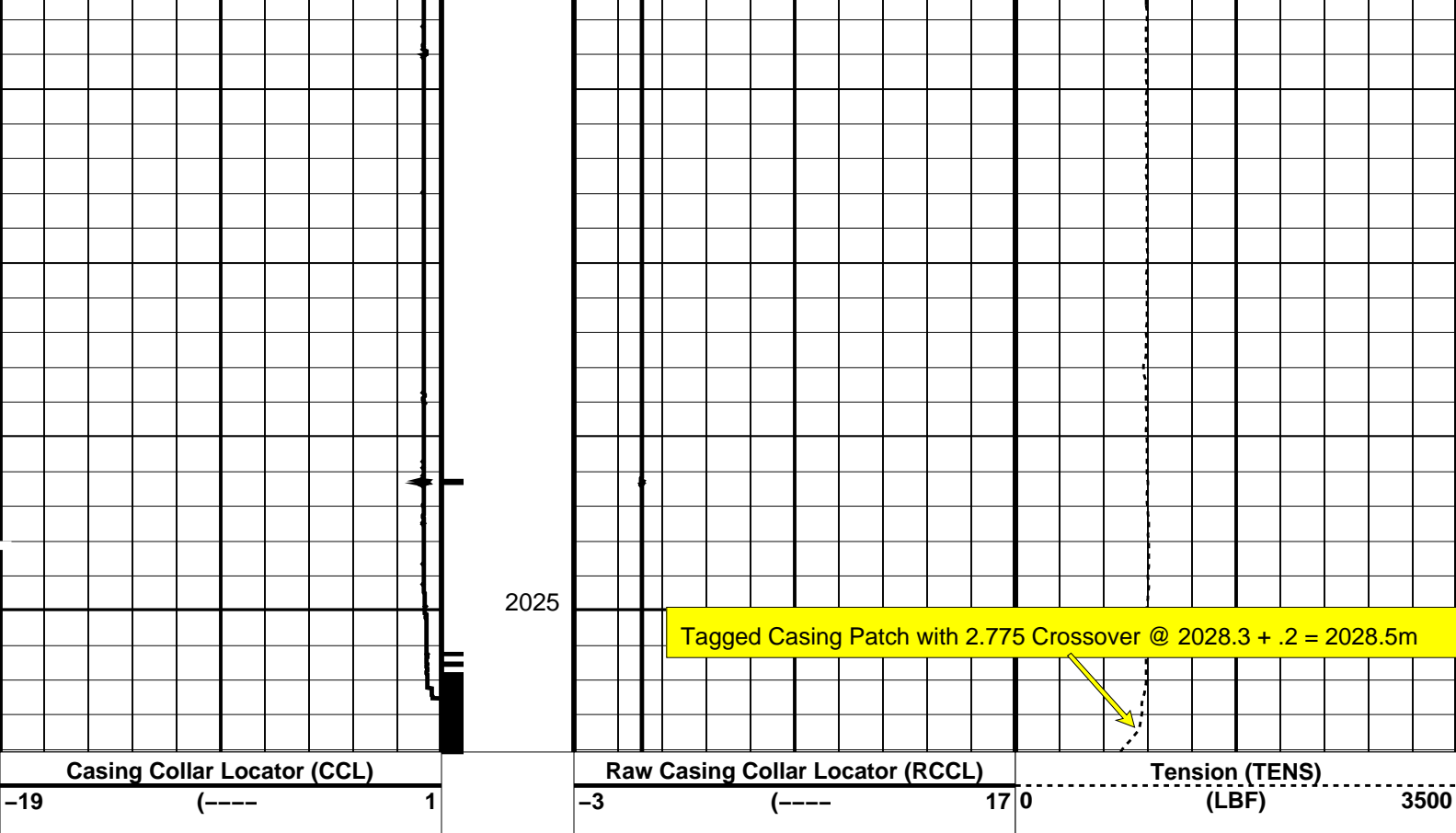
Company: AGR Asia Pacific Well: Naylor 1

Input DLIS Files					
DEFAULT	CCL_055LUP	FN:59	PRODUCER	24-Sep-2007 11:49	2027.8 M
Output DLIS Files					
DEFAULT	CCL_055PUP	FN:61	PRODUCER	24-Sep-2007 11:59	2029.1 M

OP System Version: 15C0-309	
MCM	
CCL-L	15C0-309

Time Mark Every 60 S





PIP SUMMARY

Time Mark Every 60 S

Casing Collars

Parameters

DLIS Name	Description	Value
CCLD	CCL-L: Casing Collar Locator	12 IN
CCLT	CCL reset delay	0.3 V
	CCL Detection Level	
DO	System and Miscellaneous	1.2 M
PP	Depth Offset for Playback	
	Playback Processing	NORMAL

Format: CCLLog Vertical Scale: 1:200 Graphics File Created: 24-Sep-2007 11:59

OP System Version: 15C0-309

MCM

CCL-L 15C0-309

Input DLIS Files

DEFAULT	CCL_055LUP	FN:59	PRODUCER	24-Sep-2007 11:49	2027.8 M	1953.0 M
---------	------------	-------	----------	-------------------	----------	----------

Output DLIS Files

DEFAULT	CCL_055PUP	FN:61	PRODUCER	24-Sep-2007 11:59
---------	------------	-------	----------	-------------------

Schlumberger

Drift Run 2

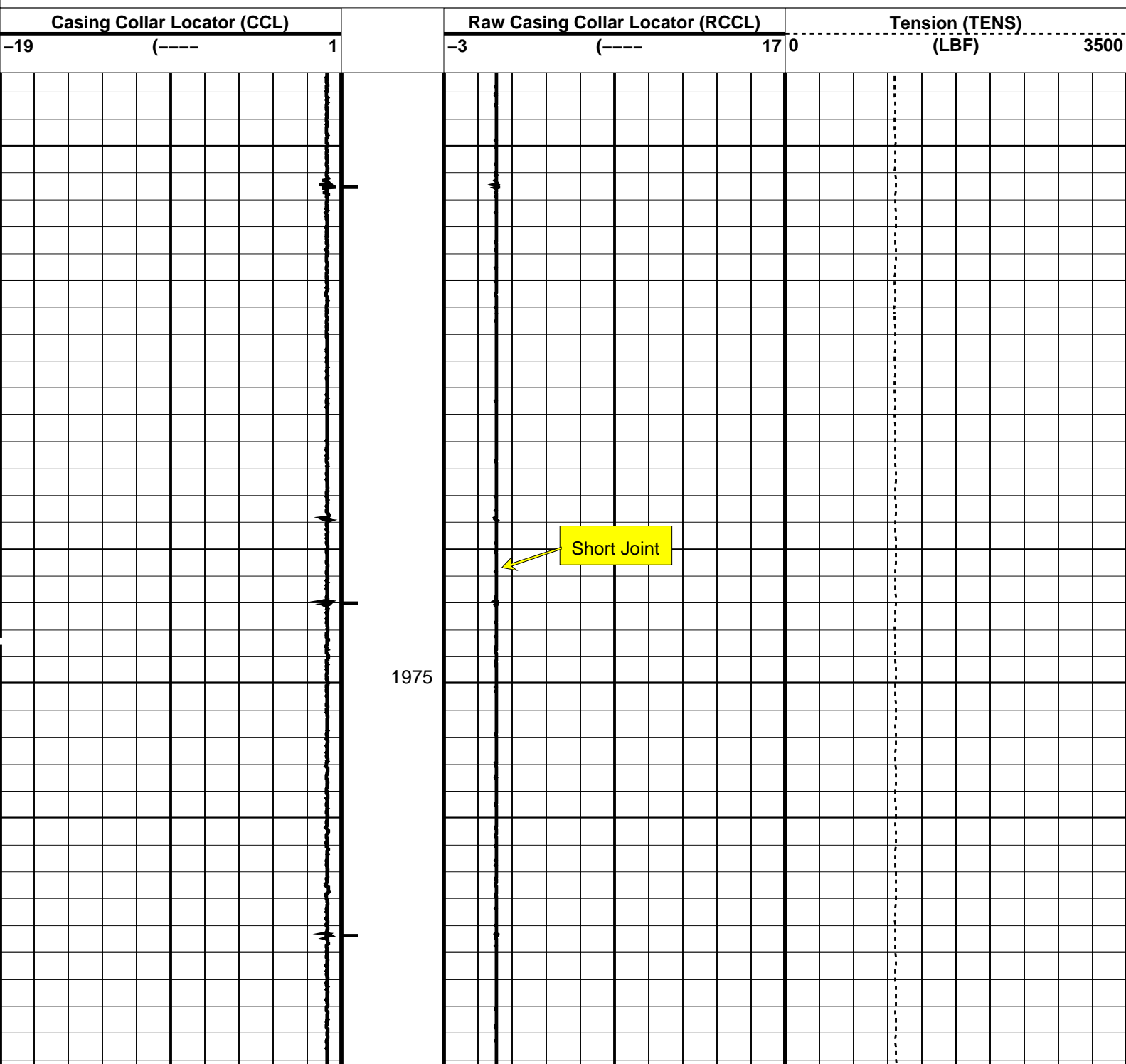
Input DLIS Files					
DEFAULT	CCL_044LUP	FN:47	PRODUCER	23-Sep-2007 17:59	2050.8 M
1951.5 M					
Output DLIS Files					
DEFAULT	CCL_044PUP	FN:48	PRODUCER	23-Sep-2007 18:08	2051.2 M
1952.2 M					

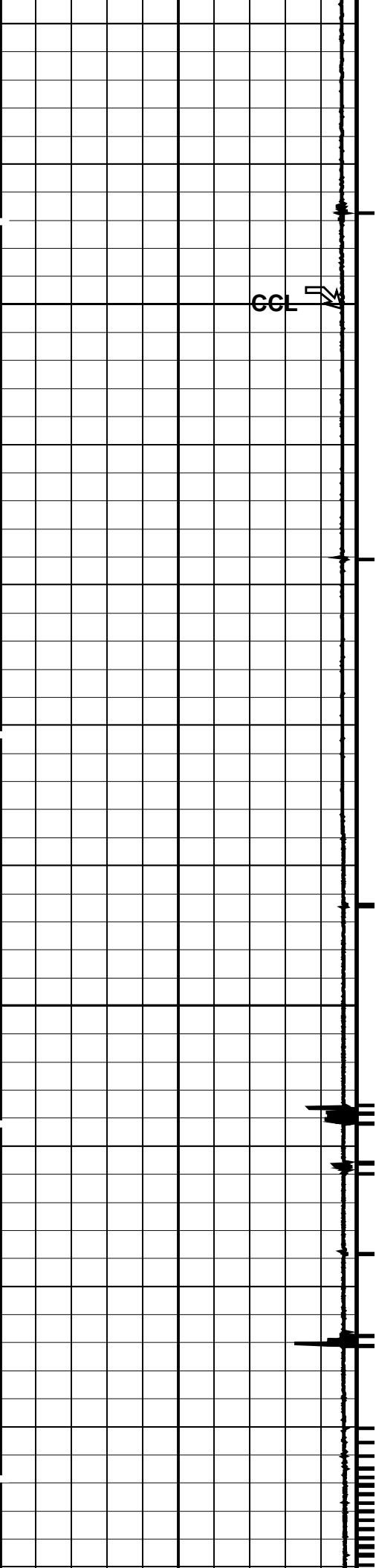
OP System Version: 15C0-309	
MCM	
CCL-L	15C0-309

PIP SUMMARY

Time Mark Every 60 S

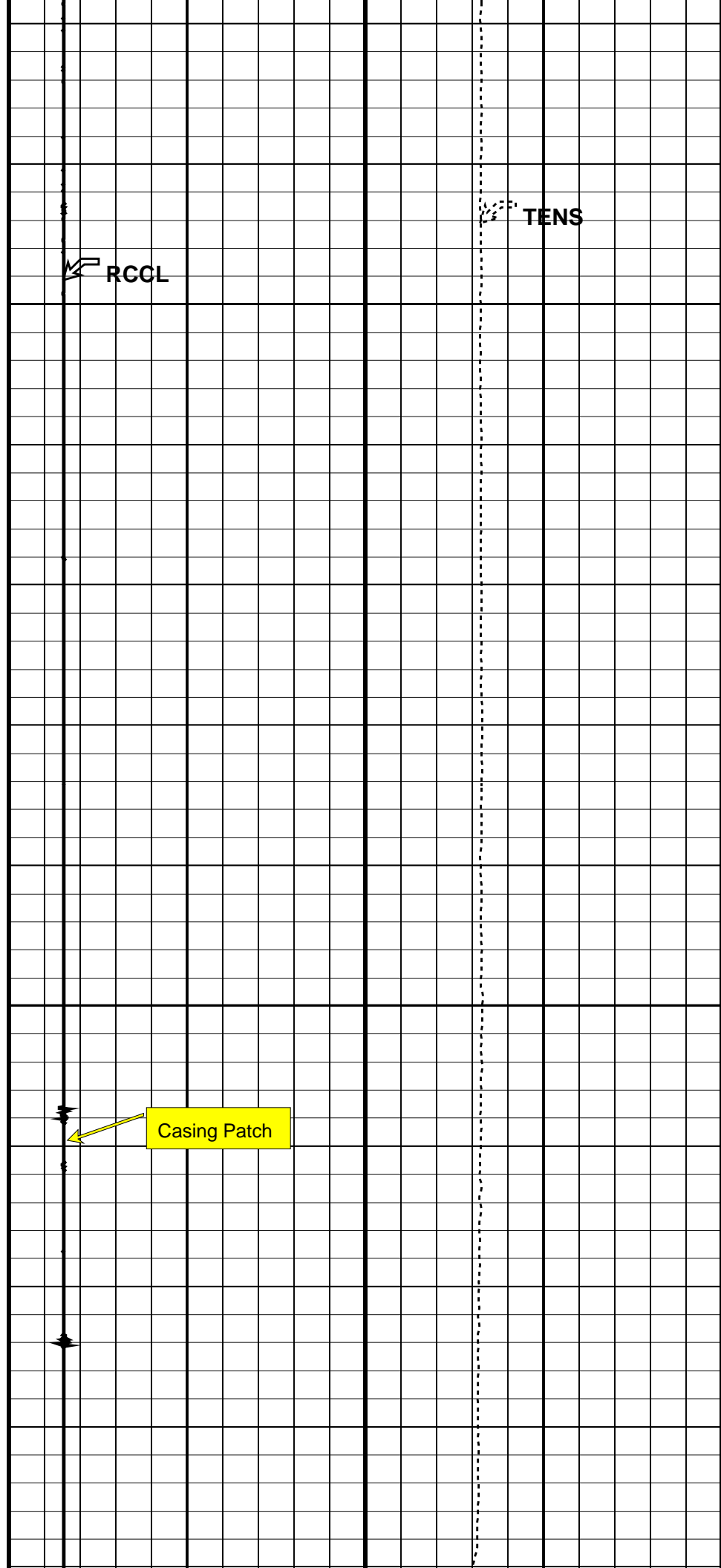
Casing Collars





2000

2025



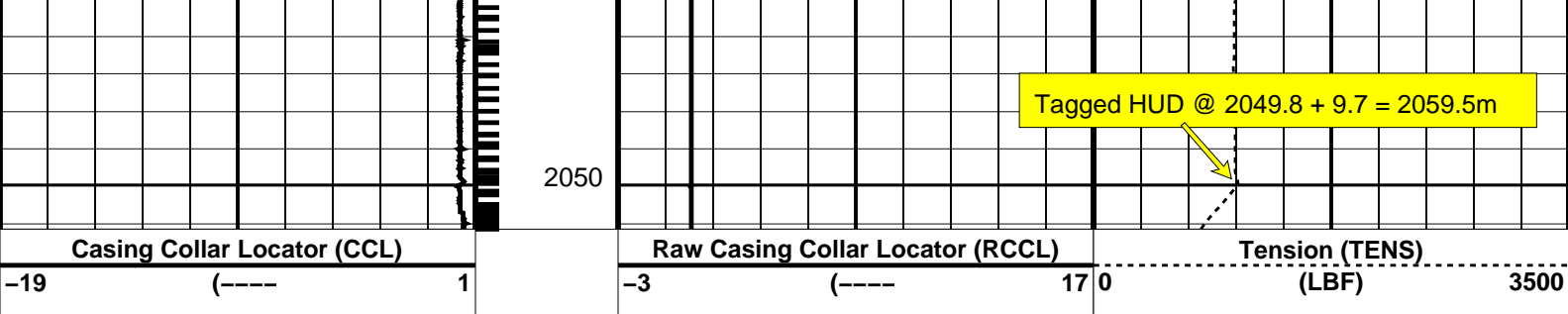
RCCL



TENS



Casing Patch



PIP SUMMARY

Time Mark Every 60 S

Parameters		
DLIS Name	Description	Value
CCLD	CCL-L: Casing Collar Locator	
CCLT	CCL reset delay	12 IN
	CCL Detection Level	0.3 V
DO	System and Miscellaneous	
PP	Depth Offset for Playback	0.3 M
	Playback Processing	NORMAL

Format: CCLLog Vertical Scale: 1:200 Graphics File Created: 23-Sep-2007 18:08

OP System Version: 15C0-309

MCM

CCL-L 15C0-309

Input DLIS Files					
DEFAULT	CCL_044LUP	FN:47	PRODUCER	23-Sep-2007 17:59	2050.8 M 1951.5 M
Output DLIS Files					
DEFAULT	CCL_044PUP	FN:48	PRODUCER	23-Sep-2007 18:08	

Gun 2 Shooting Pass

MAXIS Field Log

PERFO2 Operational Summary Listing				
Device	Status	Req Depth (M)	Obs Depth (M)	Time Used
GUN1	Used	2039.0	2039.0	Sun Sep 23 16:35:05 2007

Company: AGR Asia Pacific Well: Naylor 1

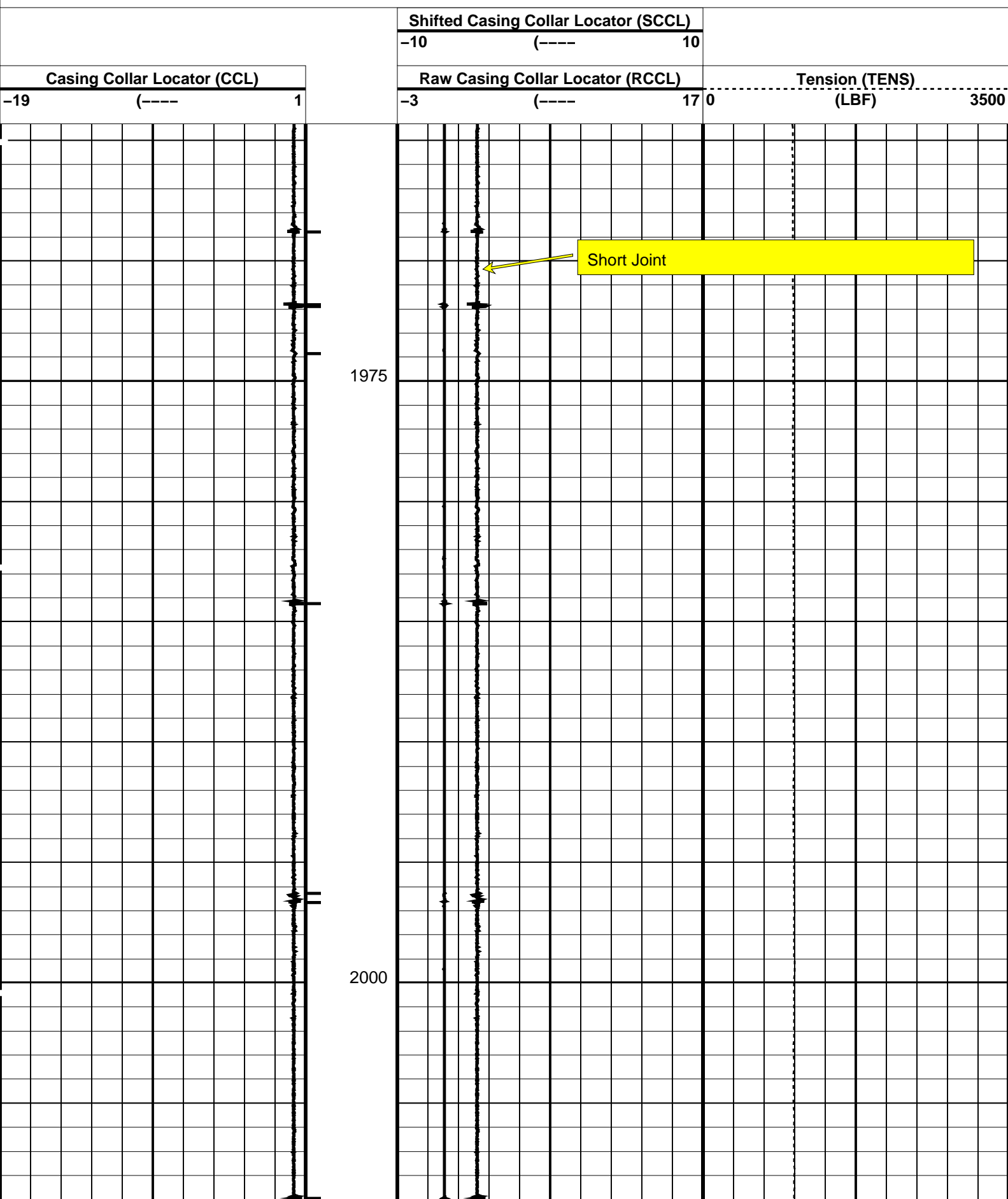
Output DLIS Files					
DEFAULT	PERFO_039LUP	FN:42	PRODUCER	23-Sep-2007 16:32	2047.5 M 1964.3 M

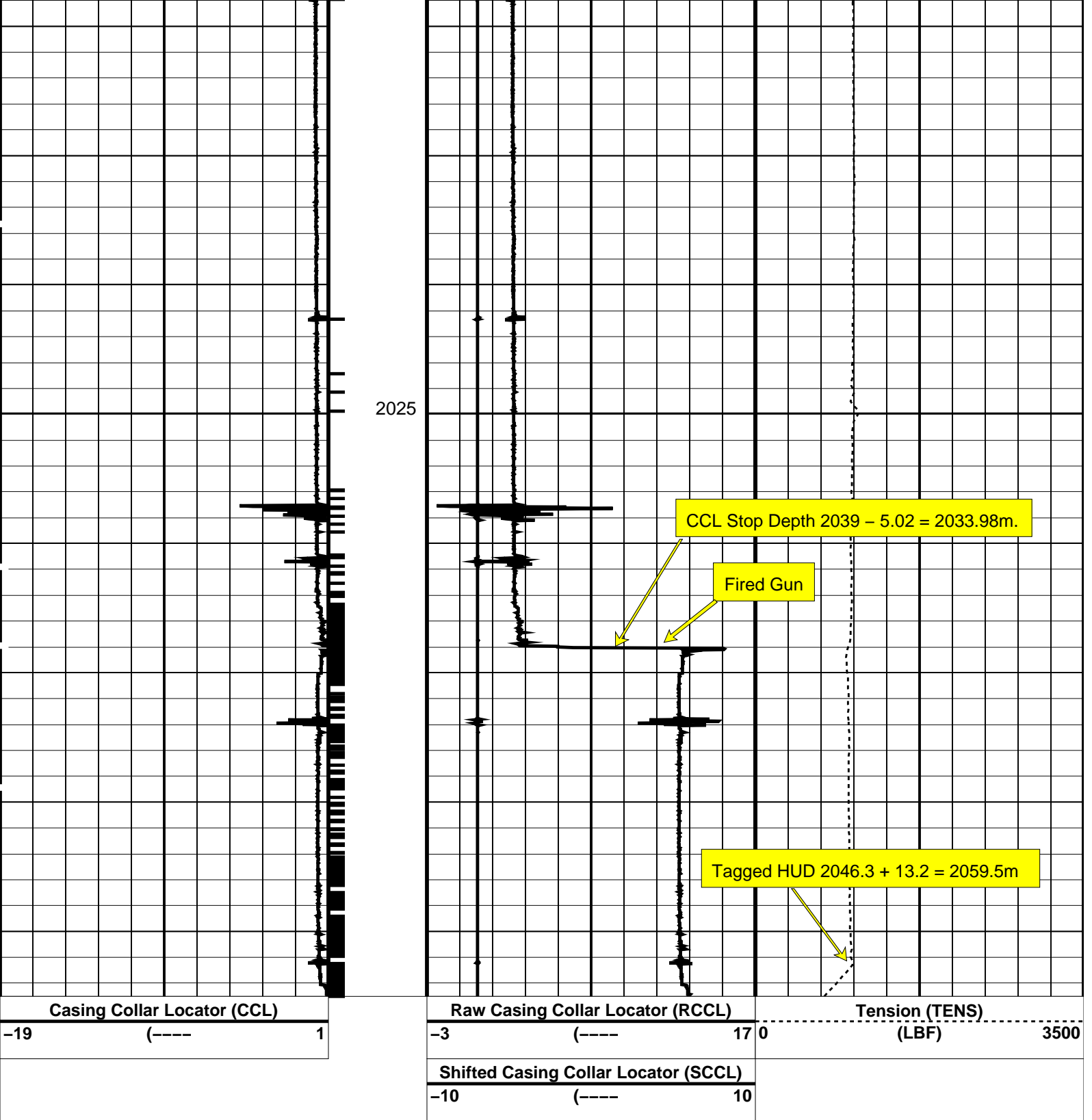
OP System Version: 15C0-309

PIP SUMMARY

└ Casing Collars

Time Mark Every 60 S





PIP SUMMARY

← Casing Collars

Time Mark Every 60 S

Parameters

DLIS Name	Description	Value
CCL-L: Casing Collar Locator		
CCLD	CCL reset delay	12 IN
CCLT	CCL Detection Level	0.3 V

Format: CCLLog Vertical Scale: 1:200

Graphics File Created: 23-Sep-2007 16:32

OP System Version: 15C0-309
MCM

SHM_GUN

SRPC-3357-Q2_2007

CCL-L

15C0-309

Output DLIS Files

DEFAULTPERFO_039LUPFN:42PRODUCER23-Sep-2007 16:32

Schlumberger

Gun 2 Correlation

MAXIS Field Log

Company: AGR Asia Pacific

Well: Naylor 1

Output DLIS Files

DEFAULTPERFO_038LUPFN:41PRODUCER23-Sep-2007 16:212045.1 M1953.8 M

OP System Version: 15C0-309

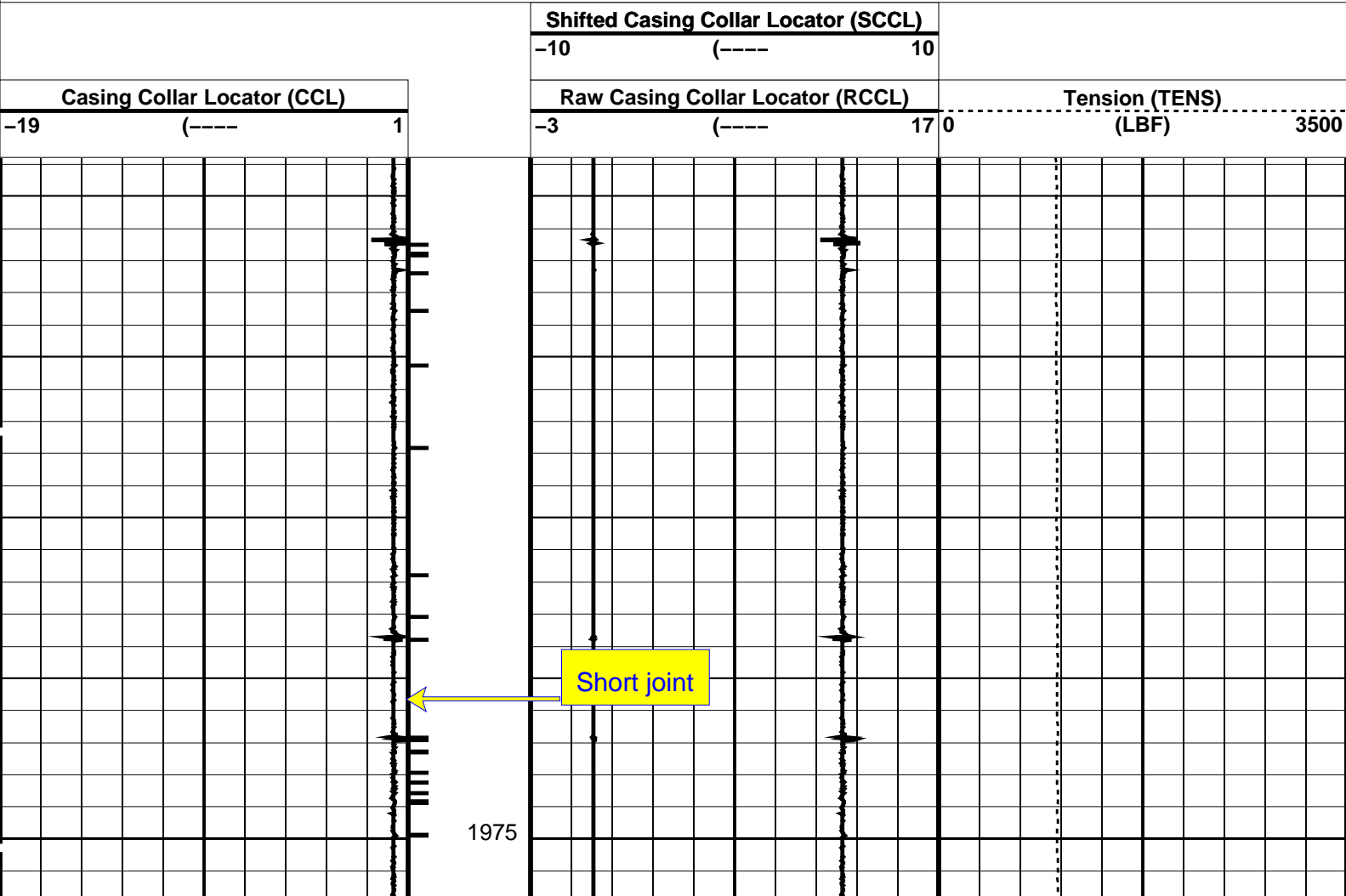
MCM

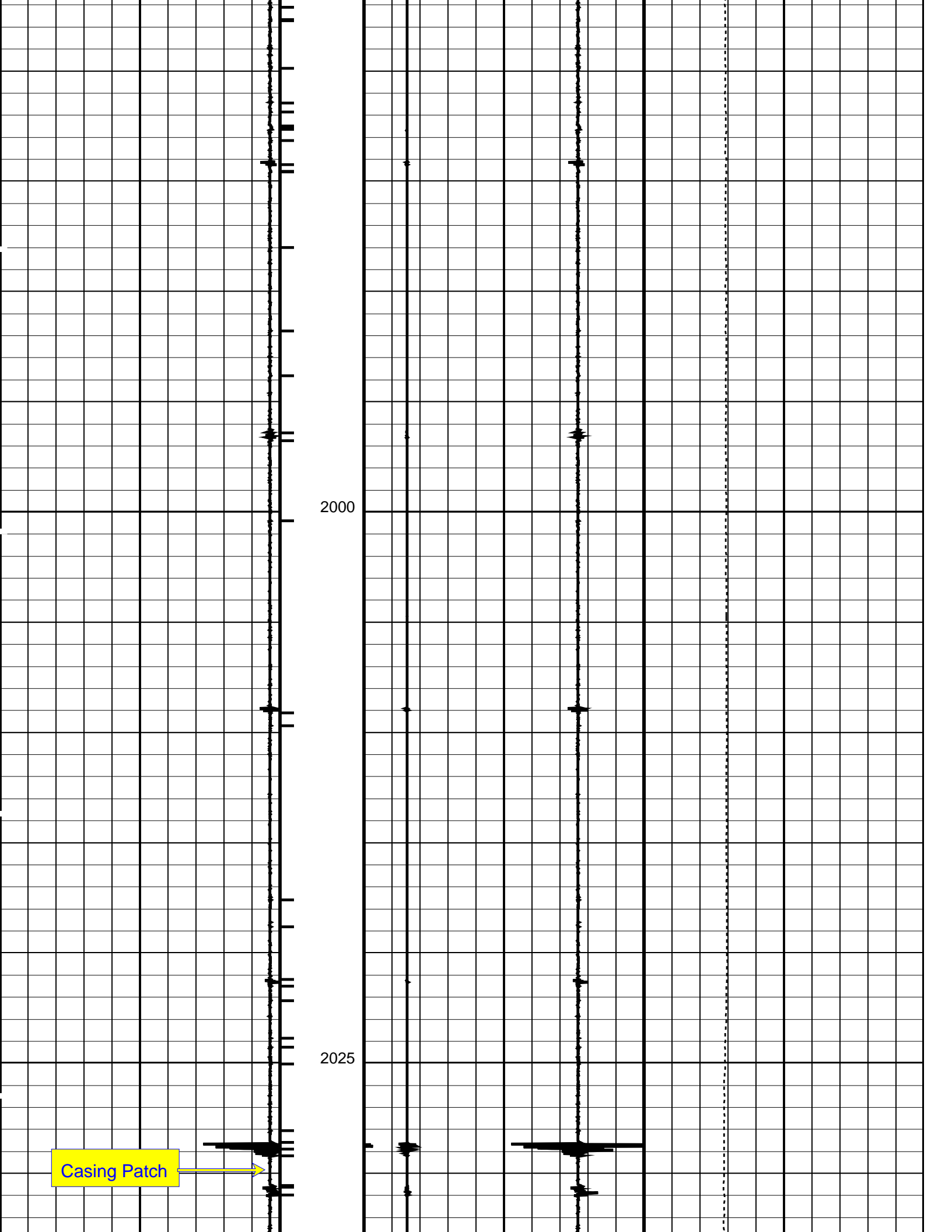
SHM_GUNSRPC-3357-Q2_2007CCL-L15C0-309

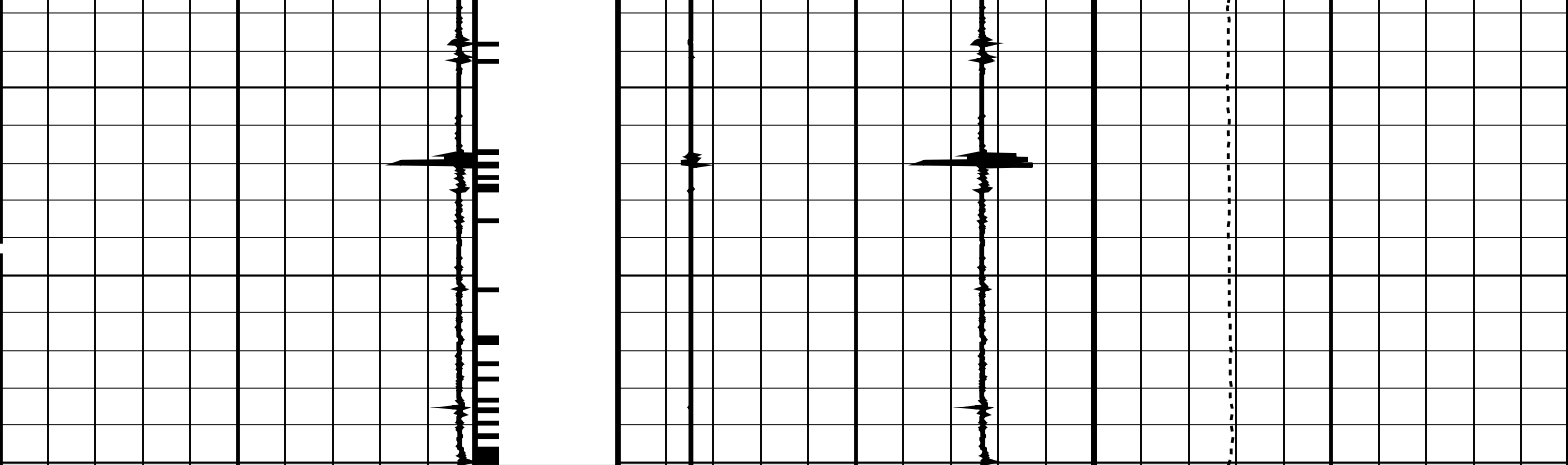
PIP SUMMARY

Time Mark Every 60 S

Casing Collars







Casing Collar Locator (CCL)		Raw Casing Collar Locator (RCCL)		Tension (TENS)	
-19	(----- 1	-3	(----- 17 0	(LBF)	3500
		Shifted Casing Collar Locator (SCCL)			
		-10		(----- 10	

PIP SUMMARY					
└─ Casing Collars					
Time Mark Every 60 S					

Parameters		
DLIS Name	Description	Value
CCLD	CCL-L: Casing Collar Locator	12 IN
CCLT	CCL reset delay	0.3 V
	CCL Detection Level	

Format: CCLLog	Vertical Scale: 1:200	Graphics File Created: 23-Sep-2007 16:21
----------------	-----------------------	--

OP System Version: 15C0-309			
MCM			
SHM_GUN	SRPC-3357-Q2_2007	CCL-L	15C0-309

Output DLIS Files			
DEFAULT	PERFO_038LUP	FN:41	PRODUCER 23-Sep-2007 16:21



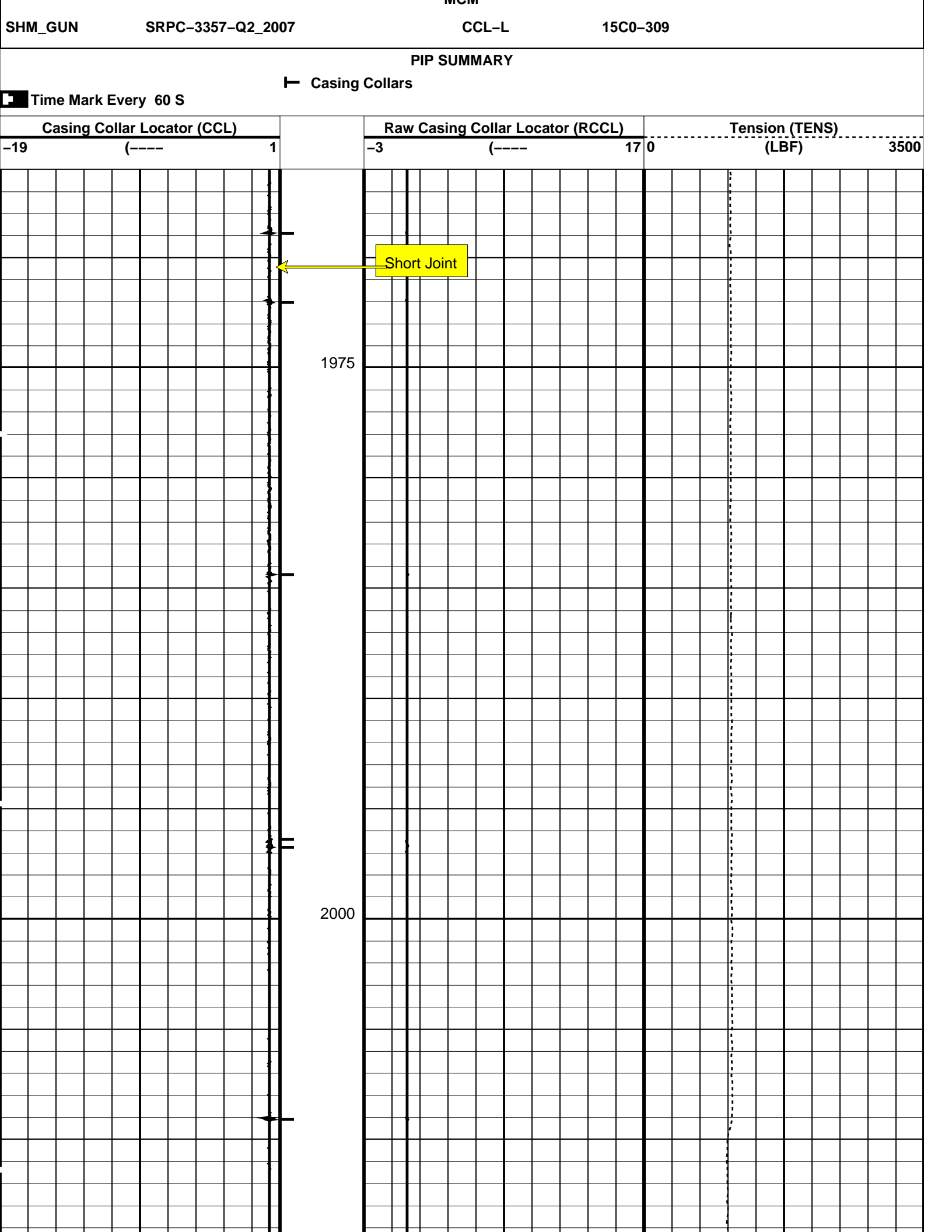
Drift Run 1

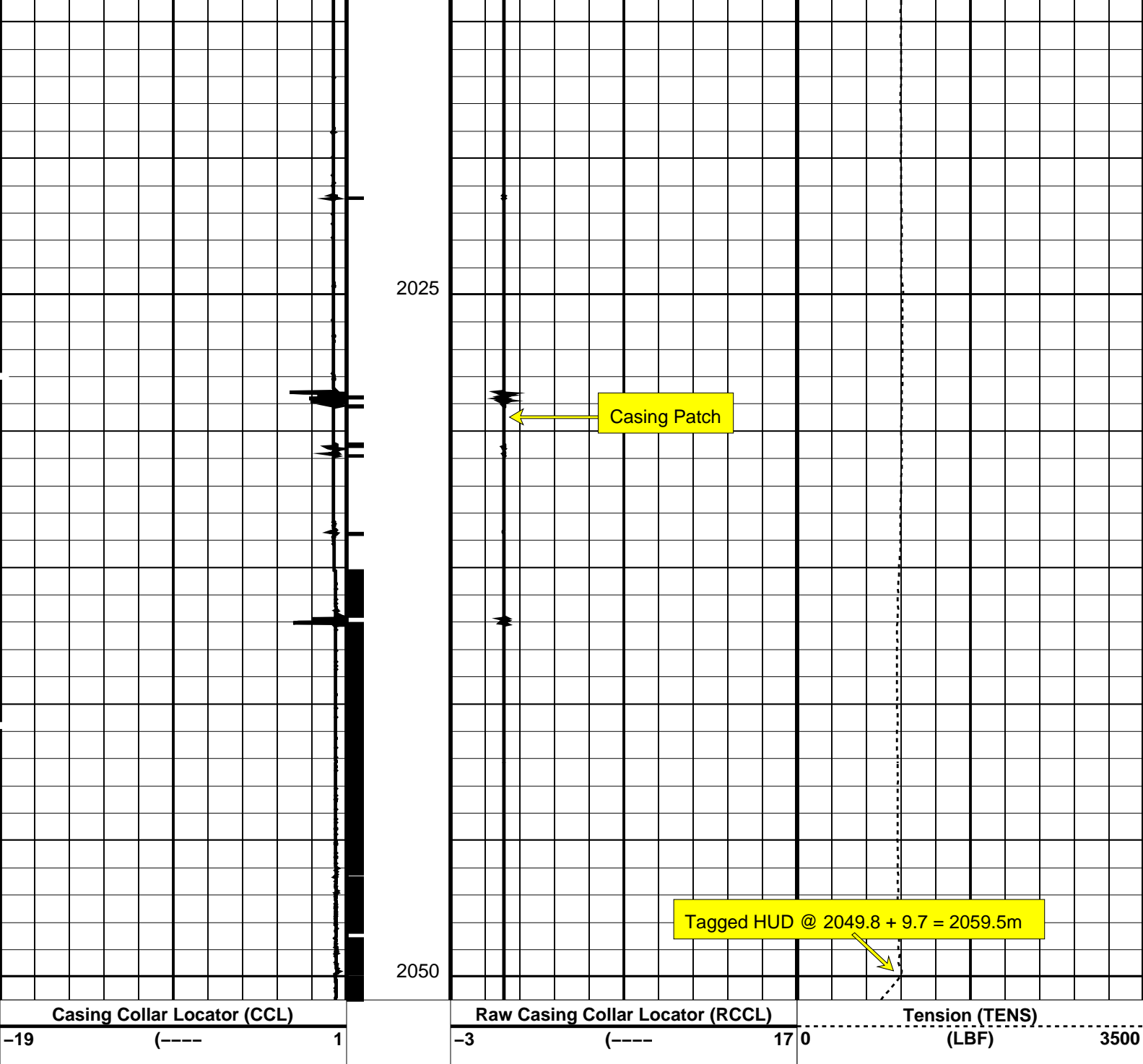
MAXIS Field Log

Company: AGR Asia Pacific	Well: Naylor 1
---------------------------	----------------

Input DLIS Files					
DEFAULT	PERFO_026LUP	FN:25	PRODUCER	23-Sep-2007 14:06	2044.9 M 1959.6 M
Output DLIS Files					
DEFAULT	PERFO_026PUP	FN:29	PRODUCER	23-Sep-2007 14:36	2050.8 M 1966.0 M

OP System Version: 15C0-309					
MCM					





PIP SUMMARY

Time Mark Every 60 S

Casing Collars

Parameters

DLIS Name	Description	Value
CCLD	CCL-L: Casing Collar Locator	
CCLT	CCL reset delay	12 IN
	CCL Detection Level	0.3 V
DO	System and Miscellaneous	
PP	Depth Offset for Playback	5.9 M
	Playback Processing	NORMAL

Format: CCLLog Vertical Scale: 1:200 Graphics File Created: 23-Sep-2007 14:36

OP System Version: 15C0-309

MCM

SHM_GUN SRPC-3357-Q2_2007 CCL-L 15C0-309

Input DLIS Files

DEFAULT PERFO_026LUP FN:25 PRODUCER 23-Sep-2007 14:06 2044.9 M 1959.6 M

Output DLIS Files

DEFAULT PERFO_026PUP FN:29 PRODUCER 23-Sep-2007 14:36



Gun 1 Shooting Pass

MAXIS Field Log

PERFO2 Operational Summary Listing

Device	Status	Req Depth (M)	Obs Depth (M)	Time Used
GUN1	Used	2046.9	2046.9	Sat Sep 22 14:30:00 2007

Company: AGR Asia Pacific Well: Naylor 1

Output DLIS Files

DEFAULT PERFO_014LUP FN:13 PRODUCER 22-Sep-2007 14:26

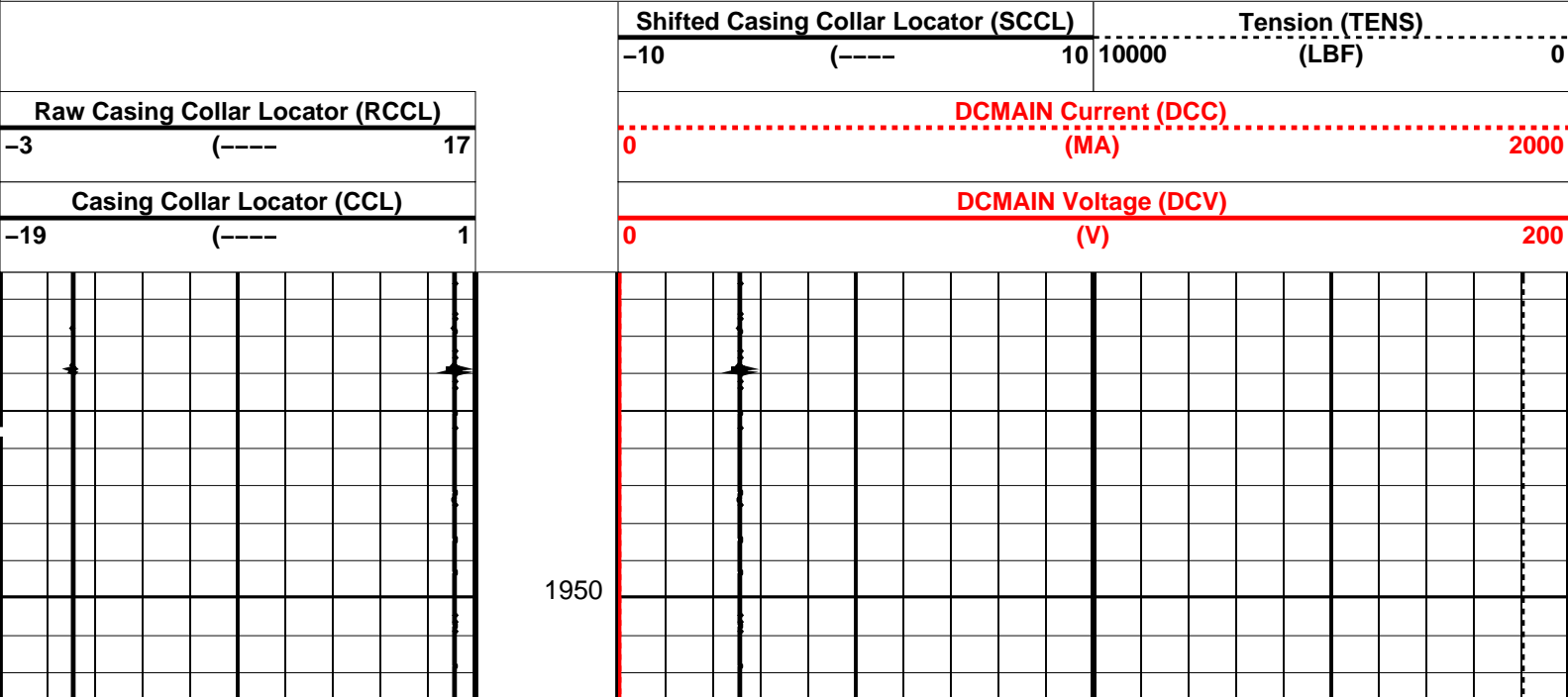
OP System Version: 15C0-309
MCM

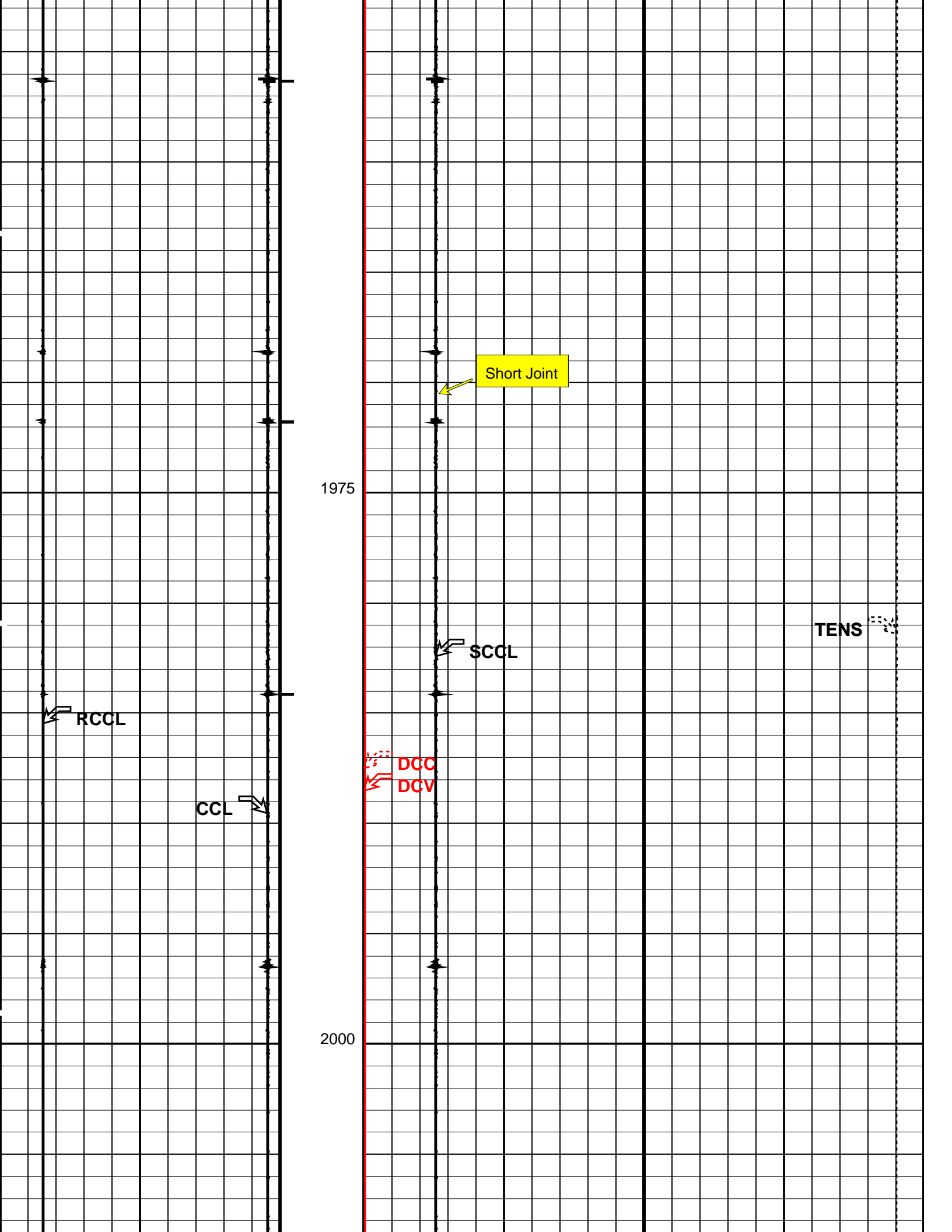
SHM_GUN SRPC-3357-Q2_2007 CCL-L 15C0-309

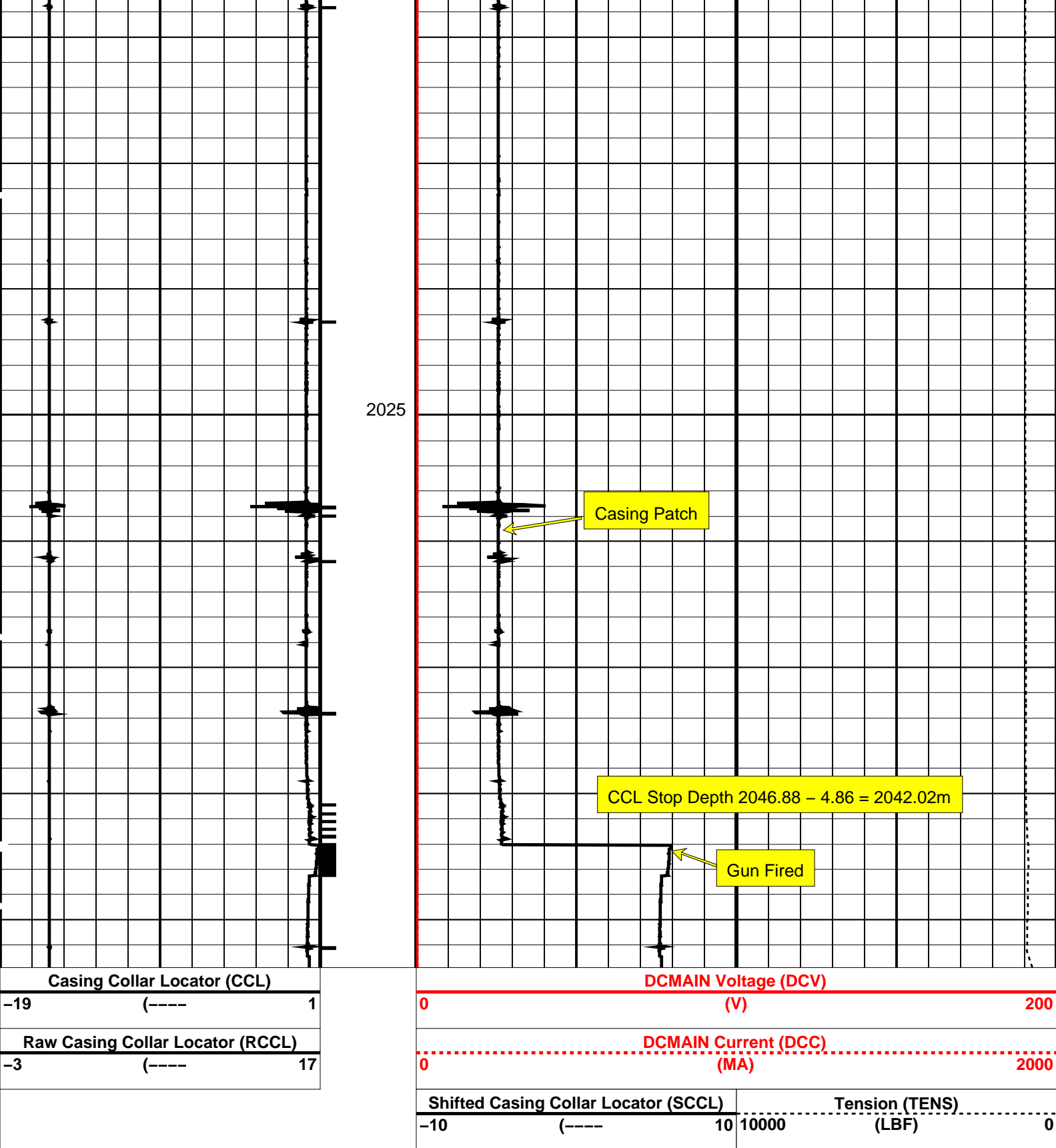
PIP SUMMARY

Casing Collars

Time Mark Every 60 S







PIP SUMMARY

Time Mark Every 60 S

Parameters		
DLIS Name	Description	Value
CCLD	CCL-L: Casing Collar Locator	12 IN
CCLT	CCL reset delay	0.3 V
	CCL Detection Level	

OP System Version: 15C0-309

MCM

SHM_GUN SRPC-3357-Q2_2007 CCL-L 15C0-309

Output DLIS Files

DEFAULT PERFO_014LUP FN:13 PRODUCER 22-Sep-2007 14:26



Gun 1 Correlation

MAXIS Field Log

Company: AGR Asia Pacific Well: Naylor 1

Output DLIS Files

DEFAULT PERFO_013LUP FN:12 PRODUCER 22-Sep-2007 14:14 2046.9 M 1953.3 M

OP System Version: 15C0-309

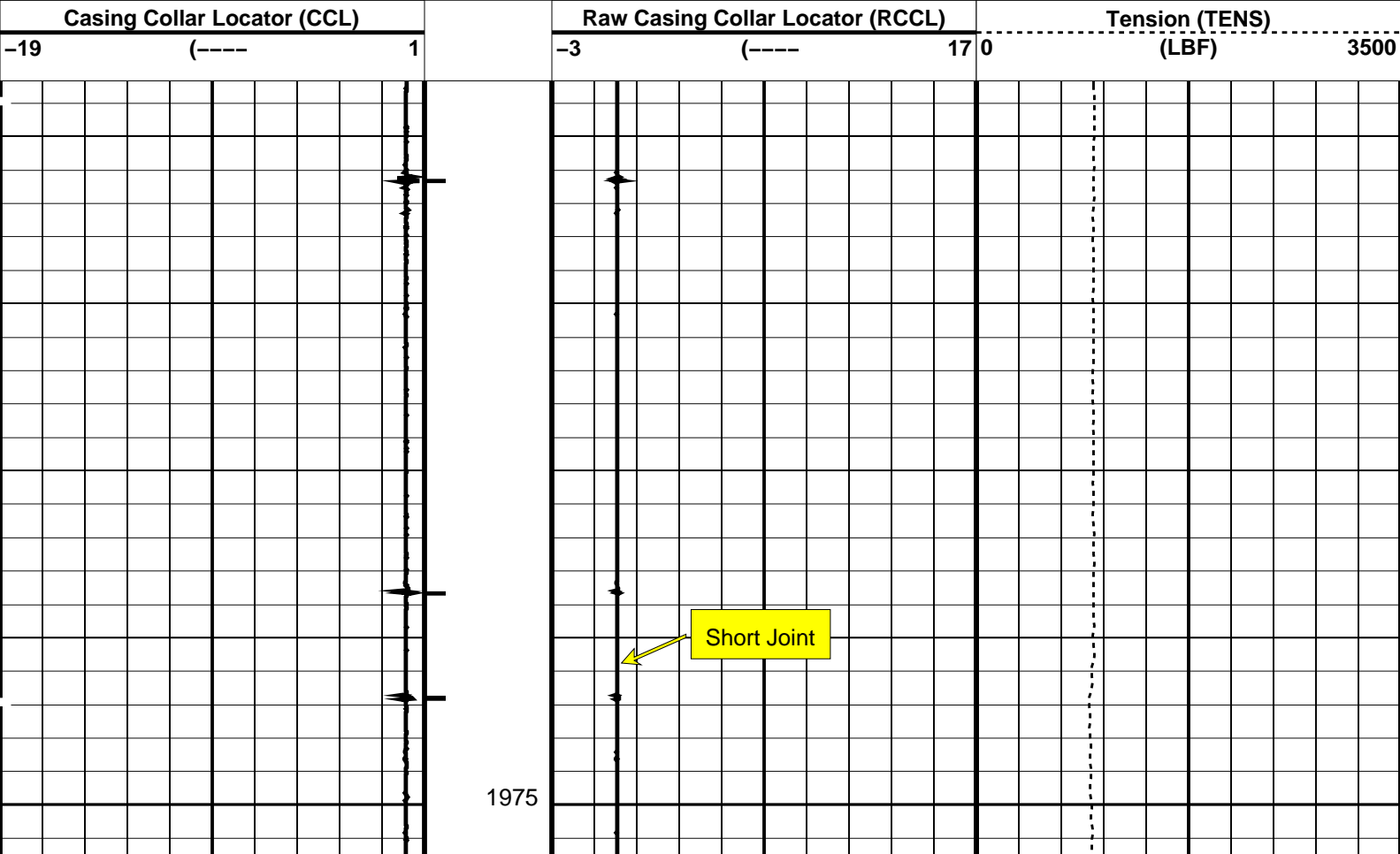
MCM

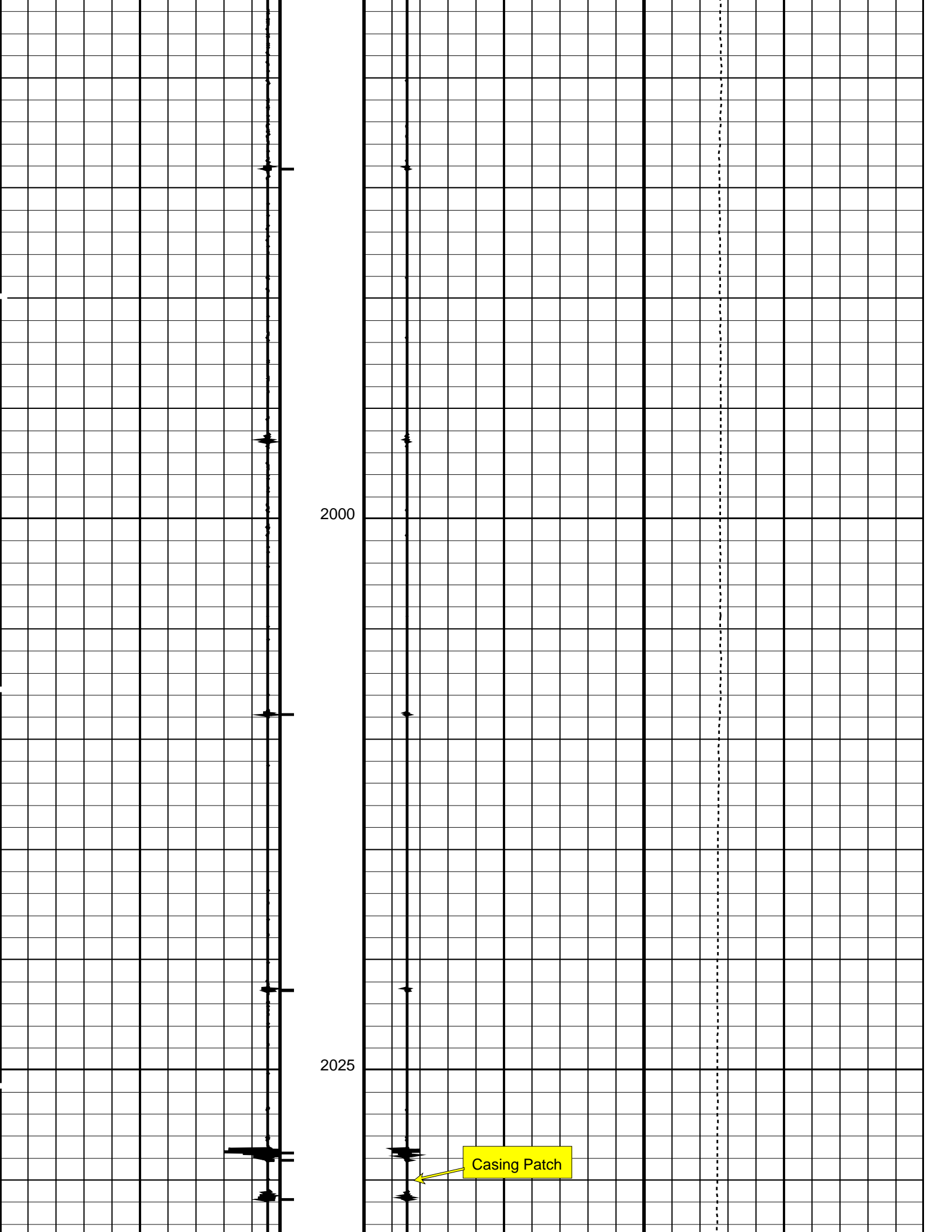
SHM_GUN SRPC-3357-Q2_2007 CCL-L 15C0-309

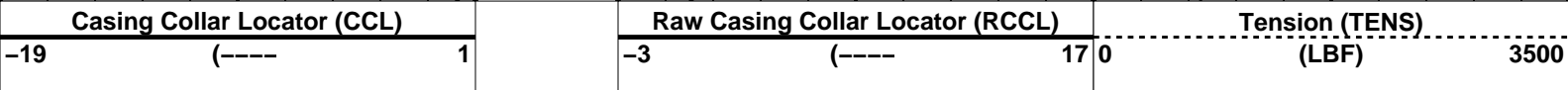
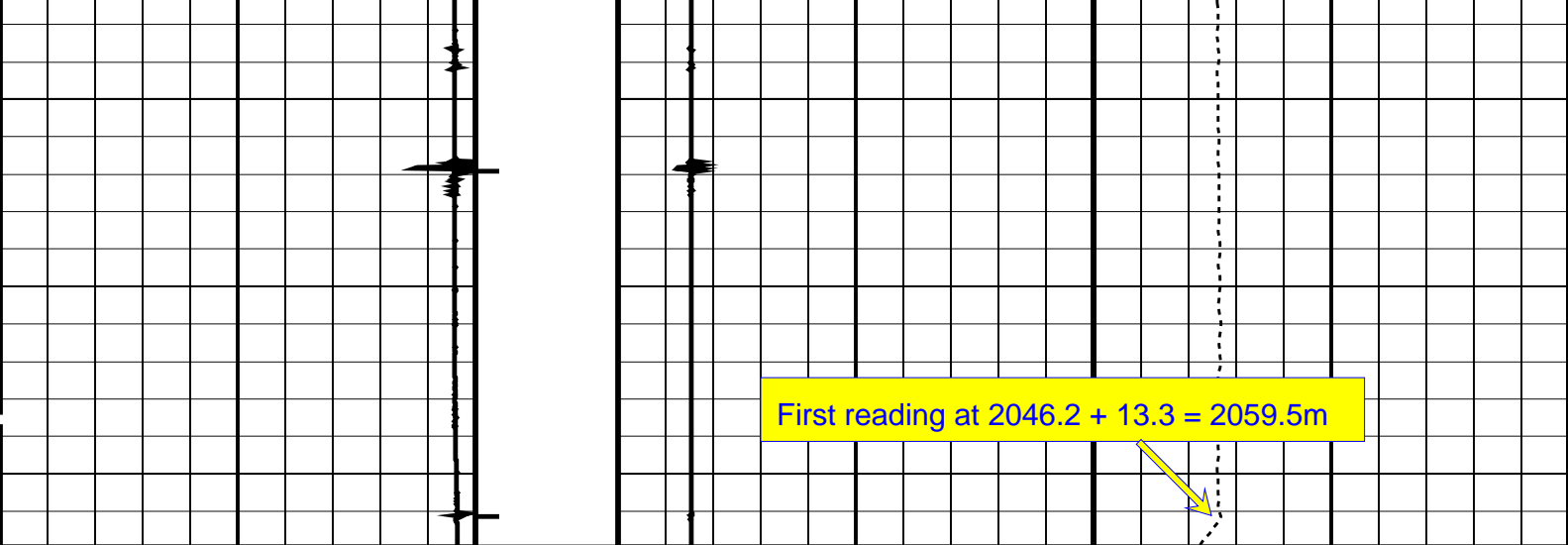
PIP SUMMARY

└─ Casing Collars

Time Mark Every 60 S







PIP SUMMARY

Time Mark Every 60 S

Casing Collars

Parameters		
DLIS Name	Description	Value
CCLD	CCL-L: Casing Collar Locator	12 IN
CCLT	CCL reset delay	0.3 V
	CCL Detection Level	

Format: CCLLog Vertical Scale: 1:200 Graphics File Created: 22-Sep-2007 14:14

OP System Version: 15C0-309			
MCM			
SHM_GUN	SRPC-3357-Q2_2007	CCL-L	15C0-309

Output DLIS Files			
DEFAULT	PERFO_013LUP	FN:12 PRODUCER	22-Sep-2007 14:14

Company: CO2CRC Pilot Project Ltd.

Well: Naylor 1

Field: Naylor

Rig: Crane

Country: Australia

Schlumberger

Perforation Record
2" HSD
2.775 Drift Run