

Company: Esso Australia Pty Ltd.

Well: A3W

Field: Barracouta

Rig: Crane/Prod 2

Country: Australia

2.5" Powercutter Record

Rig:Crane/Prod 2

Field: Barracouta

Location: Gippsland

Well: A3W

Company: Esso Australia Pty Ltd.

LOCATION

Gippsland

Basin

Bass Strait

Permanent Datum: _____

Log Measured From: _____

Drilling Measured From: _____

Elev.: K.B. 55.87 m

G.L. -45.70 m

D.F. 55.87 m

Elev.: 24.00 m

-24.00 m above Perm. Datum

State: Victoria

Max. Well Deviation 25 deg

Longitude 147°40'29"E

Latitude 38°17'53"S

PVT DATA			Run 1	Run 2	Run 3
Oil Density					
Water Salinity					
Gas Gravity					
Bo					
Bw					
1/Bg					
Bubble Point Pressure					
Bubble Point Temperature					
Solution GOR					
Maximum Deviation	25 deg				
CEMENTING DATA					
Primary/Squeeze	Primary				
Casing String No					
Lead Cement Type					
Volume					
Density					
Water Loss					
Additives					
Tail Cement Type					
Volume					
Density					
Water Loss					
Additives					
Expected Cement Top					

Logging Date

17-Sep-2008

Run Number

1

Depth Driller

3212 m

Schlumberger Depth

1370 m

Bottom Log Interval

1325 m

Top Log Interval

920 m

Casing Fluid Type

Brine

Salinity

Density

9.6 lbm/gal

Fluid Level

BIT/CASING/TUBING STRING

Bit Size

10.500 in

From

797.2 m

To

3212 m

Casing/Tubing Size

7.000 in

Weight

29 lbm/ft

Grade

L-80

From

33 m

To

3171 m

Maximum Recorded Temperatures

17-Sep-2008

Time

16:30

Unit Number

3827

Location

AUSL

Recorded By

B.Donahoe, A.Sword

Witnessed By

Mr J. Dean, Mr R.Schuback

Logging Date					
Run Number					
Depth Driller					
Schlumberger Depth					
Bottom Log Interval					
Top Log Interval					
Casing Fluid Type					
Salinity					
Density					
Fluid Level					
BIT/CASING/TUBING STRING					
Bit Size					
From					
To					
Casing/Tubing Size					
Weight					
Grade					
From					
To					
Maximum Recorded Temperatures					
Logger On Bottom					
Unit Number					
Recorded By					
Witnessed By					

DEPTH SUMMARY LISTING

Date Created: 1-SEP-2008 9:50:43

Depth System Equipment

Depth Measuring Device		Tension Device		Logging Cable	
Type:	IDW-H	Type:	CMTD-B/A	Type:	2-32ZT
Serial Number:	794	Serial Number:	1711	Serial Number:	24187
Calibration Date:	08-Nov-2007	Calibration Date:	18-Aug-2008	Length:	5900 M
Calibrator Serial Number:	1009	Calibrator Serial Number:	1173	Conveyance Method:	Wireline
Calibration Cable Type:	2-32ZT	Calibration Gain:	1.10	Rig Type:	Rigless
Wheel Correction 1:	-6	Calibration Offset:	-270.20		
Wheel Correction 2:	-2				

Depth Control Parameters

Log Sequence:	Subsequent Log In the Well
Reference Log Name:	Petrophysical Analysis BTA A-3W
Reference Log Run Number:	
Reference Log Date:	06-Apr-2005

Depth Control Remarks

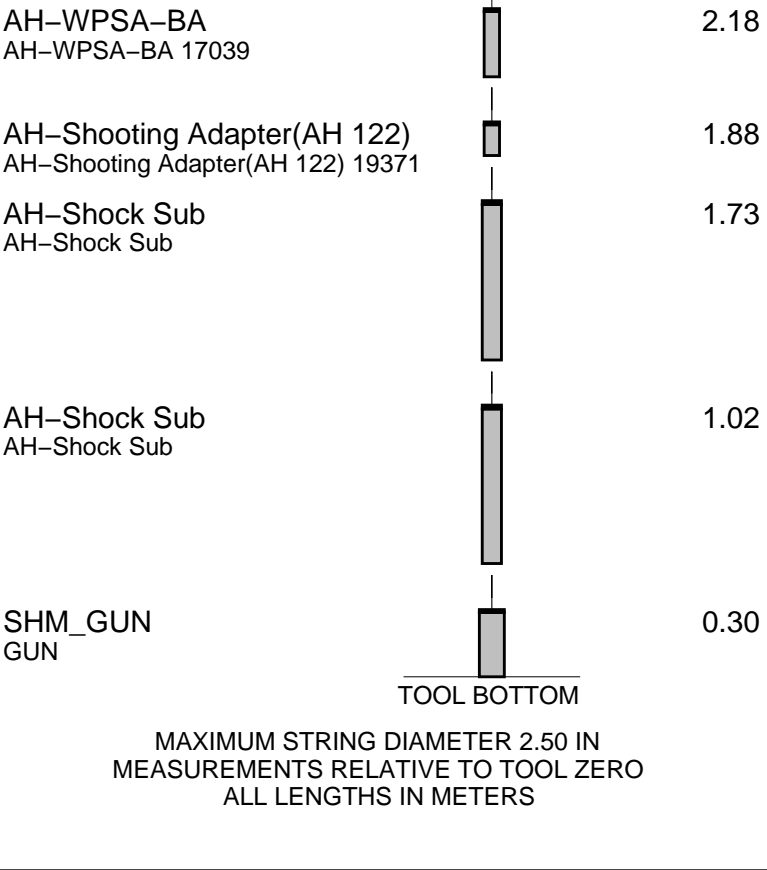
1. Primary depth control is the IDW-H 794.
2. Back-up depth control was the Z-Chart.
- 3.
- 4.
- 5.
- 6.

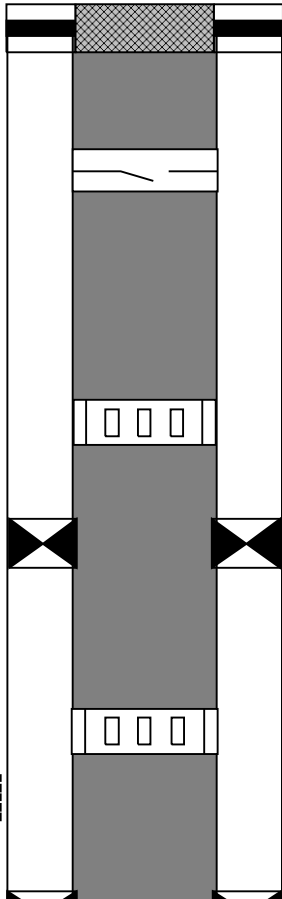
DISCLAIMER

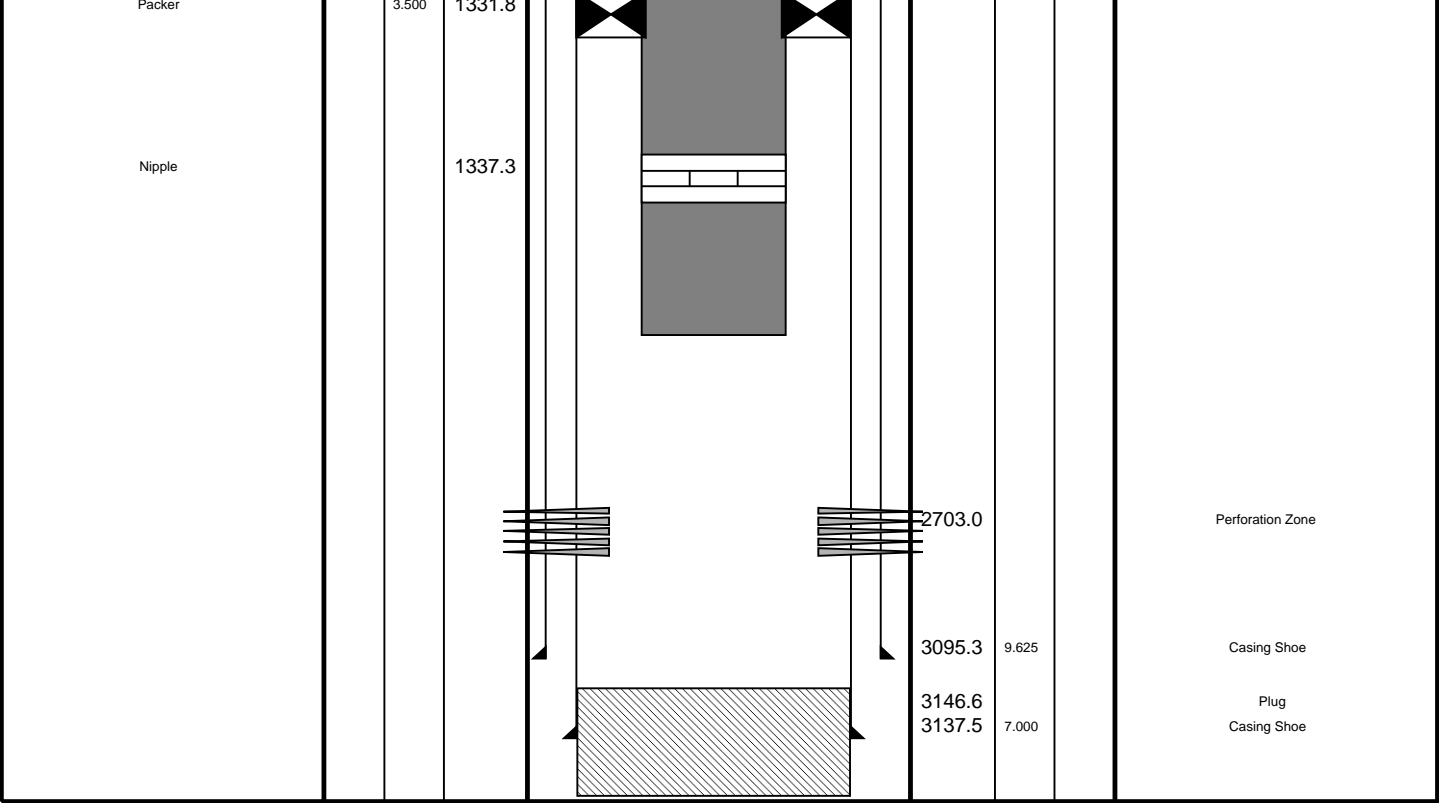
THE USE OF AND RELIANCE UPON THIS RECORDED-DATA BY THE HEREIN NAMED COMPANY (AND ANY OF ITS AFFILIATES, PARTNERS, REPRESENTATIVES, AGENTS, CONSULTANTS AND EMPLOYEES) IS SUBJECT TO THE TERMS AND CONDITIONS AGREED UPON BETWEEN SCHLUMBERGER AND THE COMPANY, INCLUDING: (a) RESTRICTIONS ON USE OF THE RECORDED-DATA; (b) DISCLAIMERS AND WAIVERS OF WARRANTIES AND REPRESENTATIONS REGARDING COMPANY'S USE OF AND RELIANCE UPON THE RECORDED-DATA; AND (c) CUSTOMER'S FULL AND SOLE RESPONSIBILITY FOR ANY INFERENCE DRAWN OR DECISION MADE IN CONNECTION WITH THE USE OF THIS RECORDED-DATA.

OTHER SERVICES1	OTHER SERVICES2
OS1:	OS1:
OS2:	OS2:
OS3:	OS3:
OS4:	OS4:
OS5:	OS5:
REMARKS: RUN NUMBER 1	REMARKS: RUN NUMBER 2
Log correlated to Tubing Tally dated: 21-08-2007	
Objectives: Rih and cut tubing above and below top packer.	
Run 1: RIH with 2 1/2" Powercutter correlate on depth with CCL and cut at 1325m MDKB.	
Run 2: RIH with 2 1/2" Powercutter correlate on depth with CCL	
and cut at @ 913m MDKB.	

TOOL ZERO



Production String	(in)		(m)	Well Schematic	(m)	(in)		Casing String
	OD	ID	MD		MD	OD	ID	
Tubing Hanger Tubing	7.000	3.500	39.9		33.5	7.000		Casing String
	3.500		39.9		40.8	9.625		Casing String
Injection Valve			449.5					
Sliding Sleeve			890.0					
Packer		3.500	914.3					
Sliding Sleeve			929.9					
					1082.5			Squeezed Perforation Zone,



2 1/2" Powercutter
920m

MAXIS Field Log

PERFO2 Operational Summary Listing

Device	Status	Req Depth (M)	Obs Depth (M)	Time Used
GUN1	Used	913.0	913.0	Thu Sep 18 00:24:11 2008

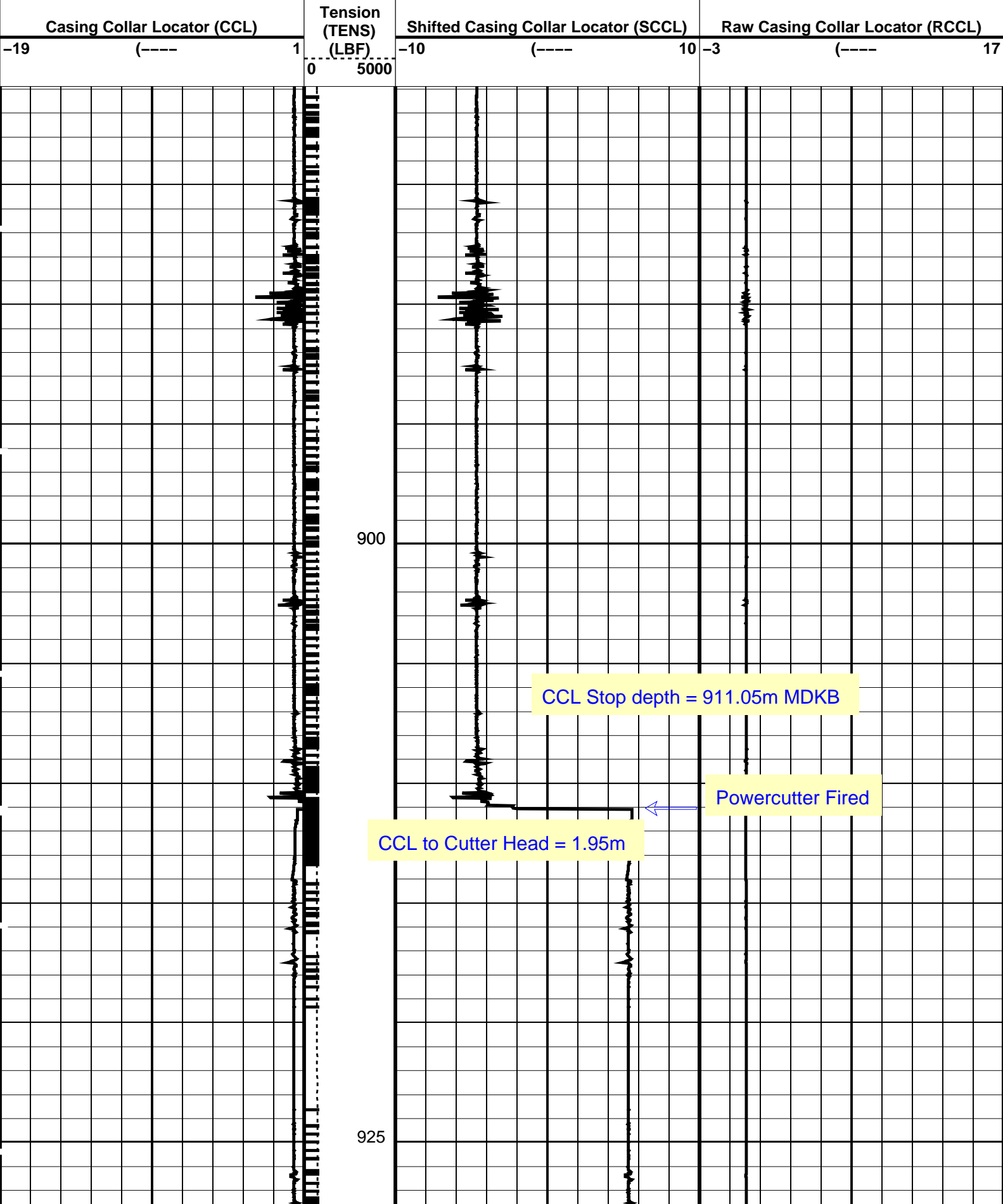
Company: Esso Australia Pty Ltd. Well: A3W

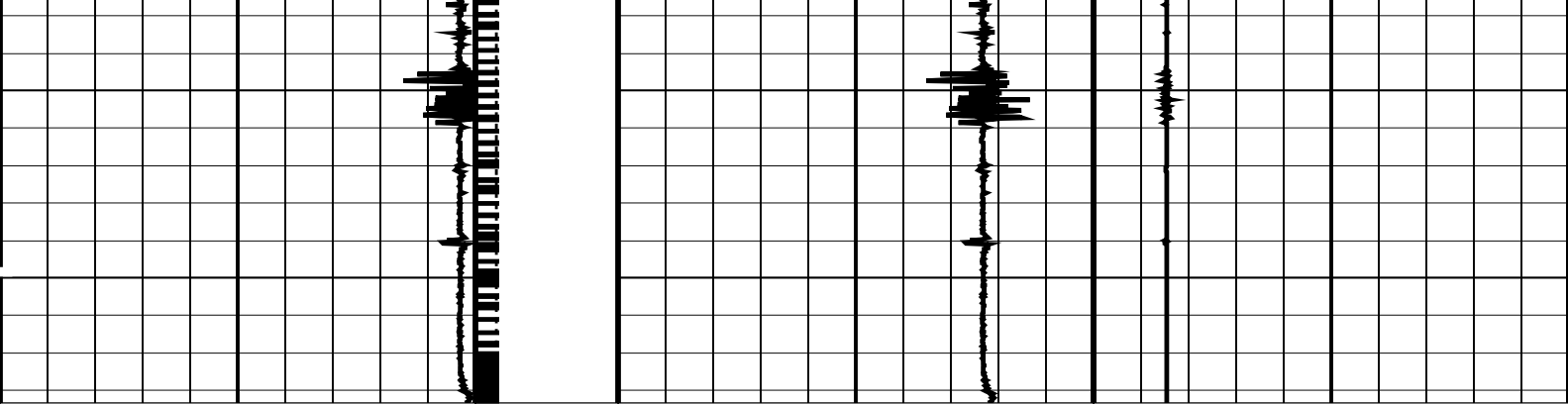
Output DLIS Files					
DEFAULT	PERFO_045LUP	FN:44	PRODUCER	18-Sep-2008 00:18	938.3 M 880.9 M

PIP SUMMARY

Time Mark Every 60 S

Casing Collars





Casing Collar Locator (CCL)	Tension (TENS) (LBF)	Shifted Casing Collar Locator (SCCL)	Raw Casing Collar Locator (RCCL)
-19 (-----)1	05000	-10 (-----)10	-3 (-----)17


PIP SUMMARY			
Time Mark Every 60 S			

Parameters			
DLIS Name	Description	Value	
CCLD	CCL-L: Casing Collar Locator	12	IN
CCLT	CCL reset delay	0.3	V
	CCL Detection Level		

Format: PERFO	Vertical Scale: 1:200	Graphics File Created: 18-Sep-2008 00:18
---------------	-----------------------	--

OP System Version: 16C0-147			
MCM			
SHM_GUN	16C0-147	CCL-L	16C0-147

Output DLIS Files			
DEFAULT	PERFO_045LUP	FN:44	PRODUCER 18-Sep-2008 00:18



Correlation Pass

Powercutter 920m

MAXIS Field Log

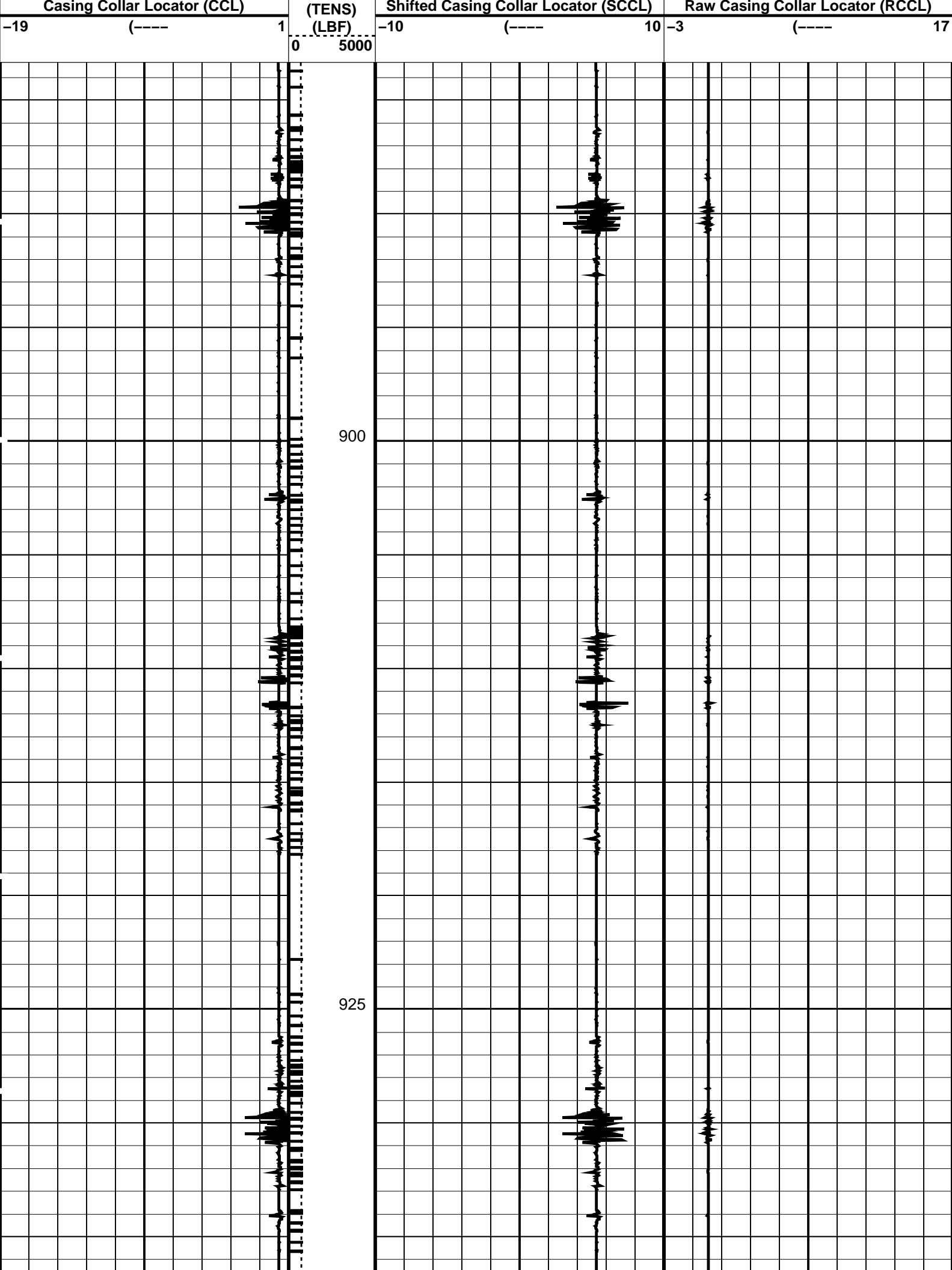
Company: Esso Australia Pty Ltd.	Well: A3W
----------------------------------	-----------

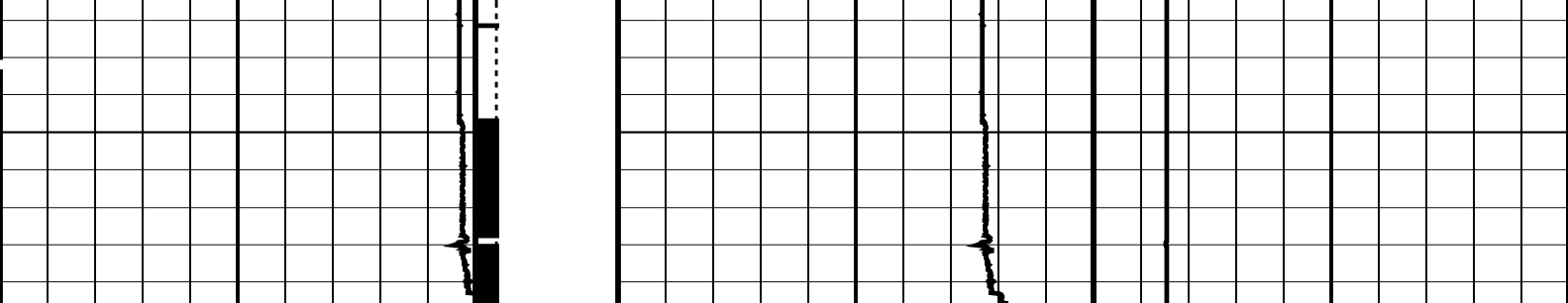
Output DLIS Files					
DEFAULT	PERFO_044LUP	FN:43	PRODUCER	18-Sep-2008 00:09	944.6 M 883.3 M

OP System Version: 16C0-147			
MCM			
SHM_GUN	16C0-147	CCL-L	16C0-147

PIP SUMMARY			
Time Mark Every 60 S			

	Tension		
--	---------	--	--





Casing Collar Locator (CCL)		Tension (TENS) (LBF)	Shifted Casing Collar Locator (SCCL)		Raw Casing Collar Locator (RCCL)	
-19	(-----1		-10	(-----10	-3	(-----17
		0 5000				

PIP SUMMARY

└─ Casing Collars

Time Mark Every 60 S

Parameters

DLIS Name	Description	Value
CCLD	CCL-L: Casing Collar Locator	12 IN
CCLT	CCL reset delay	0.3 V
	CCL Detection Level	

Format: PERFO Vertical Scale: 1:200 Graphics File Created: 18-Sep-2008 00:09

OP System Version: 16C0-147
MCM

SHM_GUN 16C0-147 CCL-L 16C0-147

Output DLIS Files

DEFAULT PERFO_044LUP FN:43 PRODUCER 18-Sep-2008 00:09

Schlumberger

2 1/2" Powercutter
1325m

MAXIS Field Log

Company: Esso Australia Pty Ltd.

Well: A3W

Output DLIS Files

DEFAULT PERFO_023LUP FN:22 PRODUCER 17-Sep-2008 17:07

OP System Version: 16C0-147
MCM

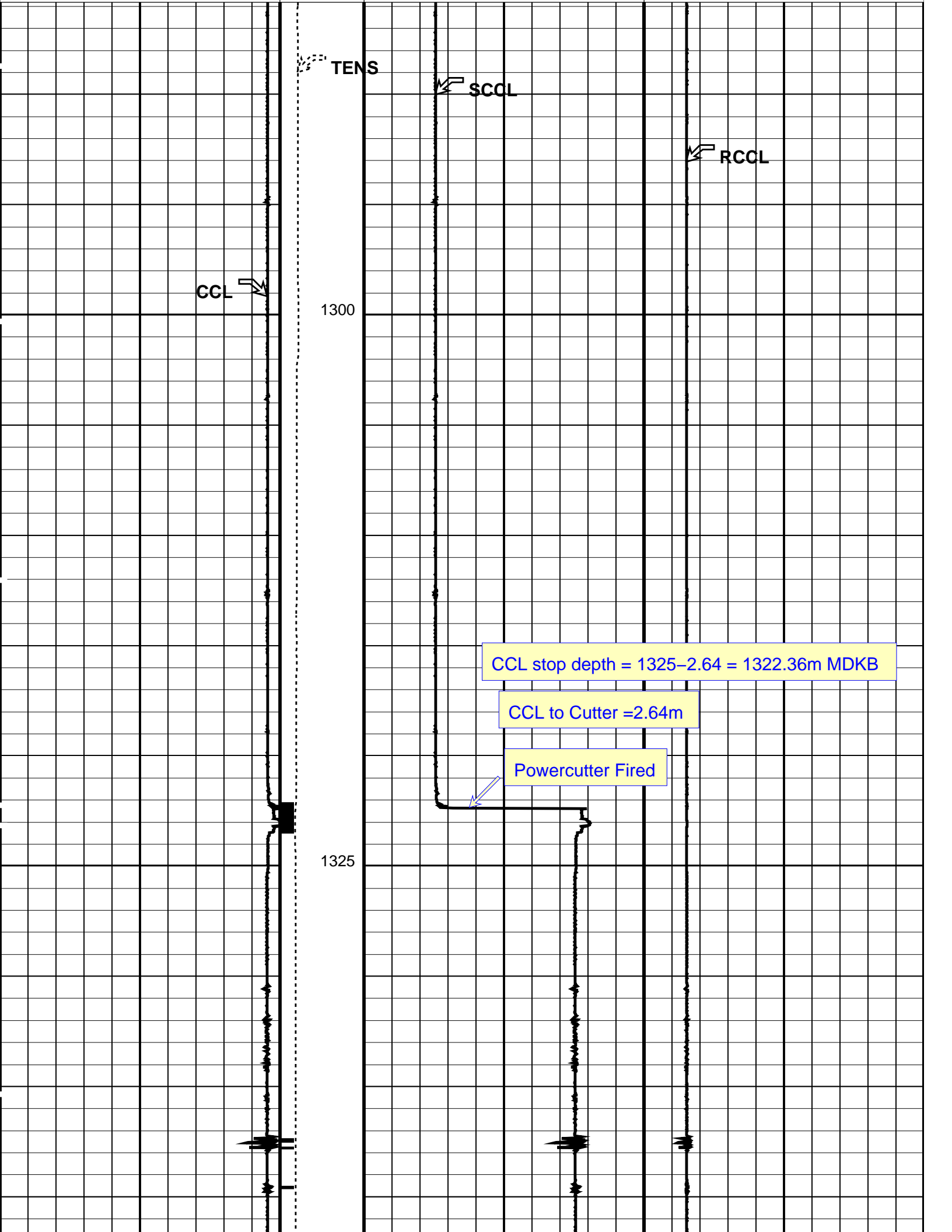
SHM_GUN 16C0-147 CCL-L 16C0-147

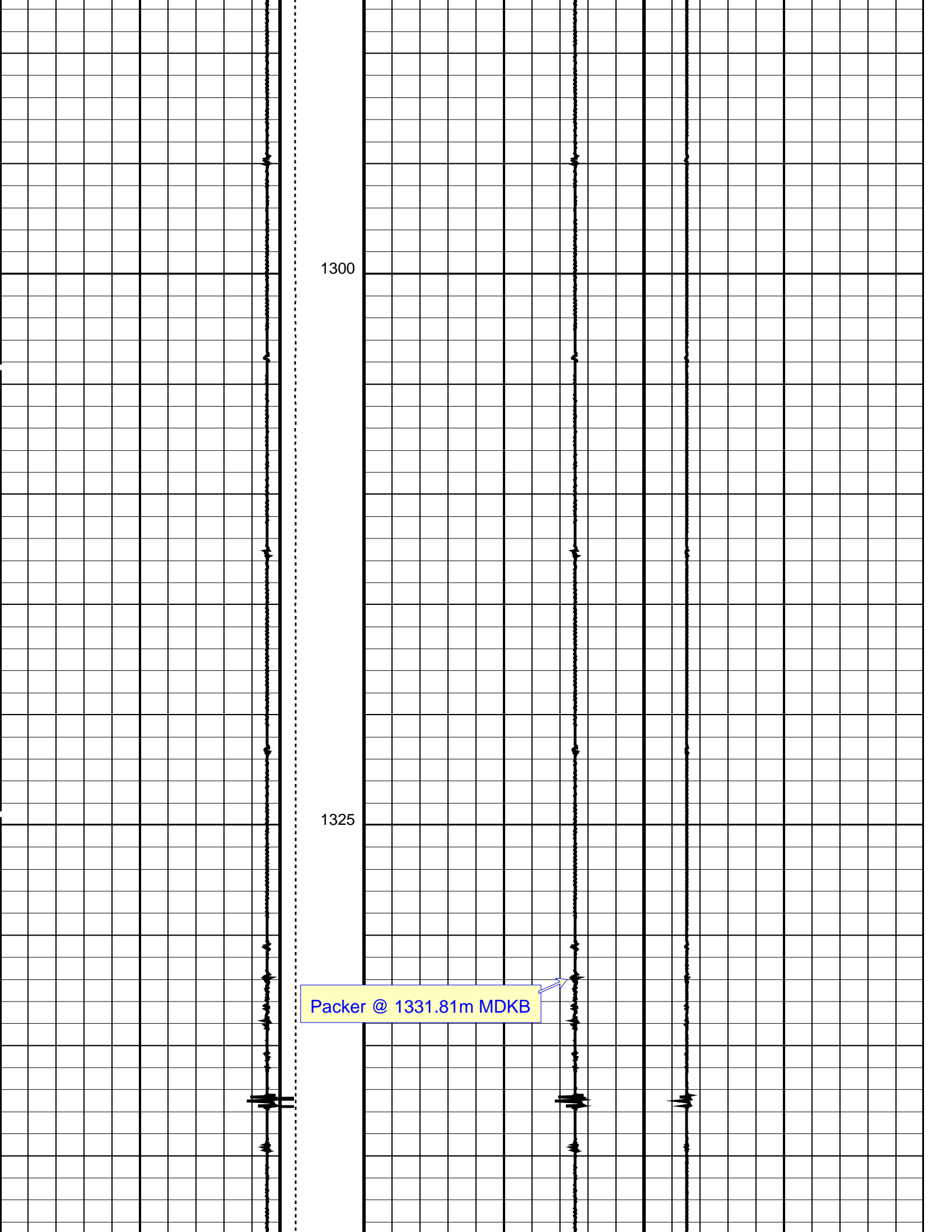
PIP SUMMARY

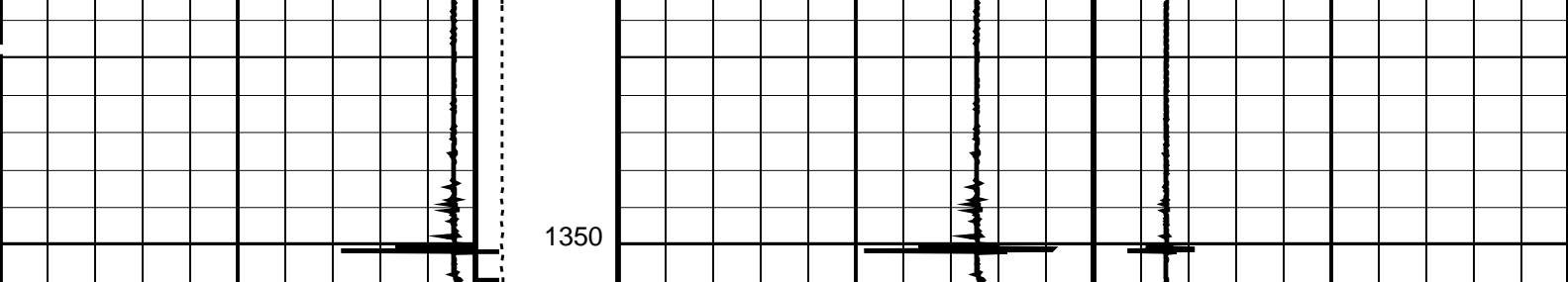
└─ Casing Collars

Time Mark Every 60 S

Casing Collar Locator (CCL)			Tension (TENS)	Shifted Casing Collar Locator (SCCL)			Raw Casing Collar Locator (RCCL)		
-19	(----	1	(LBF)	-10	(----	10	-3	(----	17
			0 5000						







Casing Collar Locator (CCL)	Tension (TENS) (LBF)	Shifted Casing Collar Locator (SCCL)	Raw Casing Collar Locator (RCCL)
-19 (-----) 1	0 5000	-10 (-----) 10	-3 (-----) 17

PIP SUMMARY

Time Mark Every 60 S

Casing Collars

Parameters			
DLIS Name	Description	Value	
CCL-L: Casing Collar Locator		12	IN
CCLD	CCL reset delay	0.3	V
CCLT	CCL Detection Level		

Format: PERFO

Vertical Scale: 1:200

Graphics File Created: 17-Sep-2008 16:59

OP System Version: 16C0-147

MCM

SHM_GUN16C0-147CCL-L16C0-147

Output DLIS Files			
DEFAULT	PERFO_022LUP	FN:21	PRODUCER 17-Sep-2008 16:59

Company: Esso Australia Pty Ltd.

Well: A3W

Field: Barracouta

Rig: Crane/Prod 2

Country: Australia

2.5" Powercutter Record

Schlumberger