

[illegible]

Company: Esso Australia Pty Ltd.

Well: A-16
Field: Bream A
Rig : Prod4 / Crane Country: Australia

Prod4 / Crane
Field: Bream A
Location: Gippsland
Well: A-16
Company: Esso Australia Pty Ltd.

2 1/8" Phased Powerjet Mwp
5 1/2" MPBT Plug
Setting Record

Gippsland Basin Bass Strait	Elev.: K.B. 32.82 m G.L. -59.00 m D.F. 32.82 m
	Permanent Datum: M.S.L. _____ Log Measured From: D.F. _____ Drilling Measured From: D.F. _____
	Elev.: 0.00 m _____ 32.82 m above Perm. Datum

State : Victoria	Max. Well Deviation 66 deg	Longitude 147 46'15"E	Latitude 038 30'04"S
---------------------	-------------------------------	--------------------------	-------------------------

Logging Date	22-Oct-2008		
--------------	-------------	--	--

Run Number	2 thru 6		
------------	----------	--	--

Depth Driller	2696 m		
---------------	--------	--	--

Schlumberger Depth	2691.6 m		
--------------------	----------	--	--

Bottom Log Interval	2691.6 m		
---------------------	----------	--	--

Top Log Interval	2650 m		
------------------	--------	--	--

Casing Fluid Type	Production Fluids		
-------------------	-------------------	--	--

Salinity			
----------	--	--	--

Density			
---------	--	--	--

Fluid Level	12 m		
-------------	------	--	--

BIT/CASING/TUBING STRING			
--------------------------	--	--	--

Bit Size	6.750 in		
----------	----------	--	--

From			
------	--	--	--

To			
----	--	--	--

Casing/Tubing Size	5.500 in		
--------------------	----------	--	--

Weight	17 lbm/ft		
--------	-----------	--	--

Grade	N-80		
-------	------	--	--

From	2422.41 m		
------	-----------	--	--

To	3496.9 m		
----	----------	--	--

Maximum Recorded Temperatures	206 degF		
-------------------------------	----------	--	--

Logger On Bottom	22-Oct-2008	Time	7:15
------------------	-------------	------	------

Unit Number	889	Location	Prod4 / Ausl
-------------	-----	----------	--------------

Recorded By	G Wright & S Gilbert.		
-------------	-----------------------	--	--

Witnessed By	B White & JD.		
--------------	---------------	--	--

Run 1

PVT DATA

Oil Density	
Water Salinity	
Gas Gravity	
Bo	
Bw	
1/Bg	

Bubble Point Pressure	
Bubble Point Temperature	
Solution GOR	

Maximum Deviation	66 deg
-------------------	--------

CEMENTING DATA

Primary/Squeeze	Primary
-----------------	---------

Casing String No	
------------------	--

Lead Cement Type	
------------------	--

Volume	
--------	--

Density	
---------	--

Water Loss	
------------	--

Additives	
-----------	--

Tail Cement Type	
------------------	--

Volume	
--------	--

Density	
---------	--

Water Loss	
------------	--

Additives	
-----------	--

Expected Cement Top	
---------------------	--

Logging Date	
--------------	--

Run Number	
------------	--

Depth Driller	
---------------	--

Schlumberger Depth	
--------------------	--

Bottom Log Interval	
---------------------	--

Top Log Interval	
------------------	--

Casing Fluid Type	
-------------------	--

Salinity	
----------	--

Density	
---------	--

Fluid Level	
-------------	--

BIT/CASING/TUBING STRING	
--------------------------	--

Bit Size	
----------	--

From	
------	--

To	
----	--

Casing/Tubing Size	
--------------------	--

Weight	
--------	--

Grade	
-------	--

From	
------	--

To	
----	--

Maximum Recorded Temperatures	
-------------------------------	--

Logger On Bottom	Time
------------------	------

Unit Number	Location
-------------	----------

Recorded By	
-------------	--

Witnessed By	
--------------	--

DEPTH SUMMARY LISTING

Date Created: 15-OCT-2008 16:00:40

Depth System Equipment

Depth Measuring Device		Tension Device		Logging Cable	
Type:	IDW-EB	Type:	PSDS/OSDS	Type:	2-32ZT
Serial Number:	6373	Serial Number:	325357	Serial Number:	208196
Calibration Date:	04-JAN-2007	Calibration Date:	15-Oct-2008	Length:	6390 M
Calibrator Serial Number:	9	Calibrator Serial Number:	1174	Conveyance Method: Wireline Rig Type: Offshore_Fixed	
Calibration Cable Type:	2-23ZT	Calibration Gain:	0.94		
Wheel Correction 1:	-2	Calibration Offset:			
Wheel Correction 2:	-4				

Depth Control Parameters

Log Sequence:	Subsequent Log In the Well
Reference Log Name:	Solar Composite Log
	.

Depth Control Remarks

1. IDW used as primary depth control.
2. Z-chart used as secondary backup

DISCLAIMER

THE USE OF AND RELIANCE UPON THIS RECORDED-DATA BY THE HEREIN NAMED COMPANY (AND ANY OF ITS AFFILIATES, PARTNERS, REPRESENTATIVES, AGENTS, CONSULTANTS AND EMPLOYEES) IS SUBJECT TO THE TERMS AND CONDITIONS AGREED UPON BETWEEN SCHLUMBERGER AND THE COMPANY, INCLUDING: (a) RESTRICTIONS ON USE OF THE RECORDED-DATA; (b) DISCLAIMERS AND WAIVERS OF WARRANTIES AND REPRESENTATIONS REGARDING COMPANY'S USE OF AND RELIANCE UPON THE RECORDED-DATA; AND (c) CUSTOMER'S FULL AND SOLE RESPONSIBILITY FOR ANY INFERENCE DRAWN OR DECISION MADE IN CONNECTION WITH THE USE OF THIS RECORDED-DATA.

OTHER SERVICES1
OS1: RST-C Sigma
OS2: Survey

REMARKS: RUN NUMBER 1
Log correlated to ExxonMobil composite supplied with logging program
Maximum well deviation 66 degrees at 2701m MDKB.
Objectives:Perforate well with 2 1/8" Powerjet,45 degree phased @ 6spf.
Set 5 1/2" Mpbtp plug at 2691.6m MDKB.
HUD: 2696m MDKB
Gun # 1
Top Shot @2687.5 m MDKB Before Gun-- SBHP: 2619 psia SBHT:201degf.
CCL to Top Shot = 3.5 m After Gun-- SBHP: 2621 psia SBHT:203 degf.

Schlumberger Crew : J Light , G Martin,C Shiells,N Simmons.

RUN 1			RUN 2		
SERVICE ORDER #: AUSL08602239 PROGRAM VERSION: 16C0-147 FLUID LEVEL: 12 m					
LOGGED INTERVAL	START	STOP	LOGGED INTERVAL	START	STOP

RUN 2

MWPM-AA 3008

MPBM 47

DOWNHOLE EQUIPMENT

AH-SWBS-B 789

10.83

AH-SWBS-B 788

10.15

AH-SWBS-B 787

9.46

AH-SWBS-B 786

8.78

AH-SWBS-B 785

8.09

MH-SWHS-A 759

7.40

MWPG-AA 24029
MWGH-AA 19

7.07

MWPG GR

_____ 2.41

MWPH-AA 94
MWPS-AA 94

6.10

CCL
SMWP Pres
SMWP Temp
Tension

___ TOOL ZERO

AH-SWBS-B 785

13.29

AH-SWBS-B 786

12.60

AH-SWBS-B 787

11.92

AH-SWBS-B 788

11.23

AH-SWBS-B 789

10.55

MH-SWHA-A 759

9.86

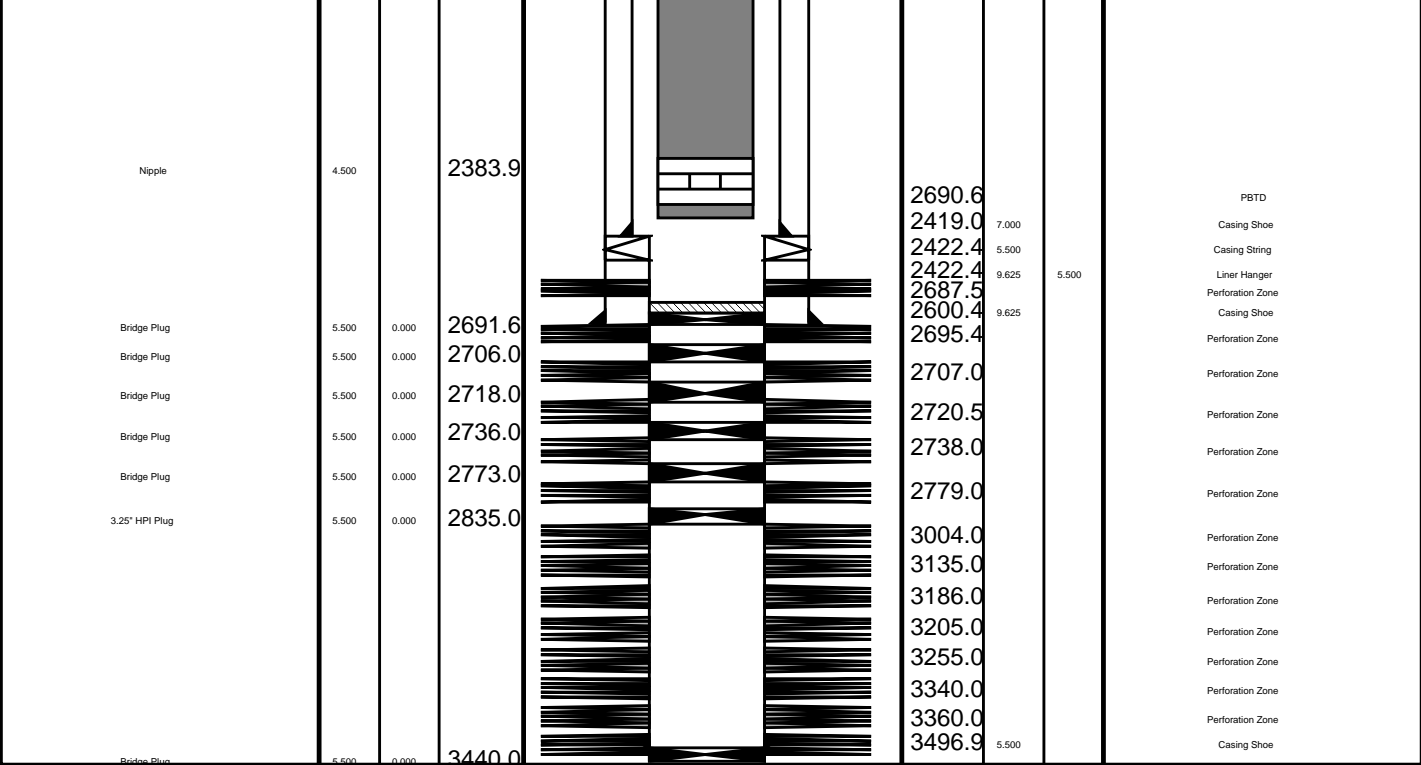
CCL-L 9851

CCL
Tachomete
Cable Cur
Head Volt
Tension

___ TOOL ZERO^{9.52}

MPSU-BA 20

9.06



Job Event Summary

MAXIS Field Log

Schlumberger Job Event Summary

Time	Elapsed Time	Depth (M)	File
------	--------------	-----------	------

Simulated Log	17-Oct-2008	6:11	000:53				PERFO_004LUP
Log Pass (down)	22-Oct-2008	6:21	000:44	-5.3	-	2701.3	RST_PSP_007LDP
Log Pass (up)	22-Oct-2008	7:05	000:15	2705.4	-	2560.0	RST_PSP_008LUP
Log Pass (up)	22-Oct-2008	7:30	000:31	2702.1	-	2558.5	RST_PSP_010LUP
Log Pass (up)	22-Oct-2008	8:05	000:31	2699.8	-	2559.1	RST_PSP_011LUP
Log Pass (up)	22-Oct-2008	9:16	000:08	35.8	-	-2.6	RST_PSP_013LUP
Simulated Log	22-Oct-2008	10:22	000:02				PERFO_015LUP
Simulated Log	22-Oct-2008	11:54	000:11				PERFO_016LUP
Log Pass (down)	22-Oct-2008	12:48	000:26	824.9	-	2662.9	PERFO_018LDP
Log Pass (up)	22-Oct-2008	13:14	000:04	2662.9	-	2638.3	PERFO_019LUP
Log Pass (down)	22-Oct-2008	13:20	000:03	2648.6	-	2691.1	PERFO_020LDP
Log Pass (up)	22-Oct-2008	13:23	000:07	2691.1	-	2641.5	PERFO_021LUP
Log Pass (up)	22-Oct-2008	13:32	000:17	2690.6	-	2631.5	PERFO_022LUP
Station Log	22-Oct-2008	13:35	000:09	2684.0	-	1.3	PERFO_023LTP
Log Pass (down)	22-Oct-2008	15:06	000:36	3.7	-	2690.8	PERFO_024LDP
Log Pass (up)	22-Oct-2008	15:42	000:07	2697.6	-	2638.0	PERFO_025LUP
Log Pass (up)	22-Oct-2008	15:52	000:04	2516.6	-	2474.8	PERFO_027LUP

Log Pass (up)	22-Oct-2008	16:09	000:06	61.4	-	-7.8	PERFO_028LUP
Simulated Log	23-Oct-2008	1:18	000:01				MPBT_031LUP
Simulated Log	23-Oct-2008	1:20	000:15				MPBT_032LUP
Log Pass (down)	23-Oct-2008	2:01	000:02	-3.8	-	2.9	MPBT_033LDP
Log Pass (down)	23-Oct-2008	2:04	000:01	7.0	-	15.8	MPBT_034LDP
Log Pass (down)	23-Oct-2008	2:07	000:27	58.1	-	1415.3	MPBT_036LDP
Log Pass (down)	23-Oct-2008	2:34	000:54	1408.3	-	2677.1	MPBT_037LDP
Log Pass (up)	23-Oct-2008	3:29	000:04	2676.8	-	2644.6	MPBT_038LUP
Log Pass (up)	23-Oct-2008	3:34	000:04	2682.2	-	2660.6	MPBT_040LUP
Log Pass (up)	23-Oct-2008	3:40	000:07	2681.3	-	2630.7	MPBT_042LUP
Log Pass (up)	23-Oct-2008	3:50	000:09	2682.5	-	2624.3	MPBT_043LUP
Log Pass (up)	23-Oct-2008	4:40	000:16	2681.8	-	2677.2	MPBT_044LUP
Simulated Log	23-Oct-2008	5:07	000:01				MPBT_045LUP
Simulated Log	23-Oct-2008	5:09	000:01				MPBT_046LUP
Simulated Log	23-Oct-2008	5:10	000:01				MPBT_047LUP
Simulated Log	23-Oct-2008	5:13	000:01				MPBT_049LUP
Simulated Log	23-Oct-2008	5:15	000:00				MPBT_050LUP
Simulated Log	23-Oct-2008	5:18	000:48				MPBT_051LUP
Log Pass (up)	23-Oct-2008	6:07	000:03	2684.7	-	2635.6	MPBT_052LUP
Log Pass (up)	23-Oct-2008	6:28	000:01	1608.6	-	1559.8	MPBT_053LUP
Simulated Log	23-Oct-2008	6:29	000:01				MPBT_054LUP
Log Pass (up)	23-Oct-2008	6:31	000:00	1551.3	-	1542.9	MPBT_055LUP
Log Pass (up)	23-Oct-2008	6:32	000:01	1501.9	-	1461.5	MPBT_056LUP
Log Pass (up)	23-Oct-2008	6:34	000:26	1418.4	-	-7.9	MPBT_057LUP
Simulated Log	23-Oct-2008	7:54	000:01				PERFO_059LUP
Log Pass (up)	23-Oct-2008	8:00	000:09	997.2	-	990.9	PERFO_060LUP
Log Pass (down)	23-Oct-2008	8:21	001:20	180.7	-	2697.0	PERFO_061LDP
Log Pass (up)	23-Oct-2008	9:41	000:05	2691.7	-	2635.6	PERFO_062LUP
Log Pass (up)	23-Oct-2008	9:57	000:15	1525.7	-	-11.0	PERFO_065LUP
Log Pass (down)	23-Oct-2008	10:41	001:20	-3.8	-	2692.5	PERFO_066LDP
Log Pass (up)	23-Oct-2008	12:00	000:03	2692.5	-	2632.9	PERFO_067LUP

Schlumberger

Cement Dump Pass

MAXIS Field Log

Input DLIS Files

DEFAULT PERFO_067LUP FN:66 PRODUCER 23-Oct-2008 12:00 2692.5 M 2632.9 M

Output DLIS Files

DEFAULT PERFO_069PUP FN:68 PRODUCER 23-Oct-2008 12:11 2697.9 M 2638.3 M

OP System Version: 16C0-147

MCM

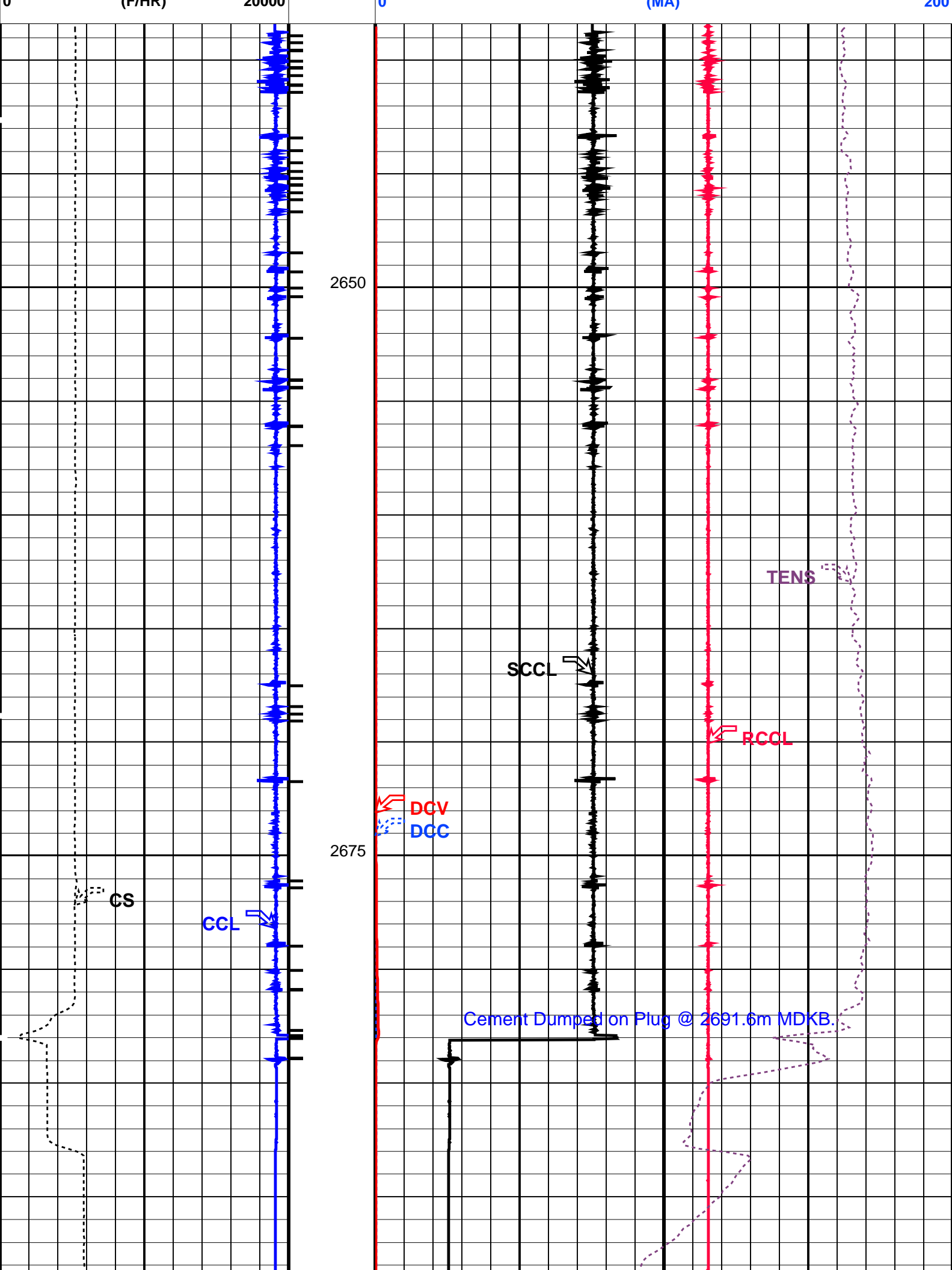
SHM_GUN 16C0-147 CCL-L 16C0-147

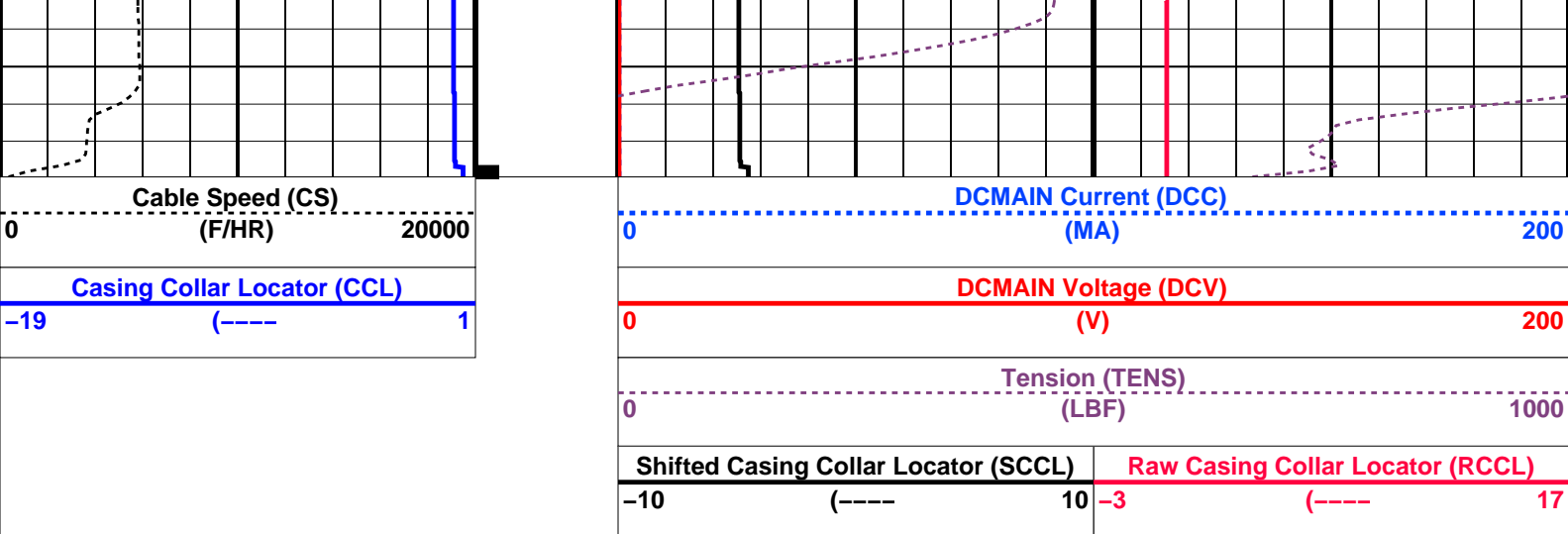
PIP SUMMARY

Casing Collars

Time Mark Every 60 S

--	--	--	--	--	--	--	--	--	--	--	--	--	--	--	--	--	--	--	--	--	--	--	--	--	--	--	--	--	--	--	--	--	--	--	--	--	--	--	--	--	--	--	--	--	--	--	--	--	--	--	--	--	--	--	--	--	--	--	--	--	--	--	--	--	--	--	--	--	--	--	--	--	--	--	--	--	--	--	--	--	--	--	--	--	--	--	--	--	--	--	--	--	--	--	--	--	--	--	--	--	--	--	--	--	--	--	--	--	--	--	--	--	--	--	--	--	--	--	--	--	--	--	--	--	--	--	--	--	--	--	--	--	--	--	--	--	--	--	--	--	--	--	--	--	--	--	--	--	--	--	--	--	--	--	--	--	--	--	--	--	--	--	--	--	--	--	--	--	--	--	--	--	--	--	--	--	--	--	--	--	--	--	--	--	--	--	--	--	--	--	--	--	--	--	--	--	--	--	--	--	--	--	--	--	--	--	--	--	--	--	--	--	--	--	--	--	--	--	--	--	--	--	--	--	--	--	--	--	--	--	--	--	--	--	--	--	--	--	--	--	--	--	--	--	--	--	--	--	--	--	--	--	--	--	--	--	--	--	--	--	--	--	--	--	--	--	--	--	--	--	--	--	--	--	--	--	--	--	--	--	--	--	--	--	--	--	--	--	--	--	--	--	--	--	--	--	--	--	--	--	--	--	--	--	--	--	--	--	--	--	--	--	--	--	--	--	--	--	--	--	--	--	--	--	--	--	--	--	--	--	--	--	--	--	--	--	--	--	--	--	--	--	--	--	--	--	--	--	--	--	--	--	--	--	--	--	--	--	--	--	--	--	--	--	--	--	--	--	--	--	--	--	--	--	--	--	--	--	--	--	--	--	--	--	--	--	--	--	--	--	--	--	--	--	--	--	--	--	--	--	--	--	--	--	--	--	--	--	--	--	--	--	--	--	--	--	--	--	--	--	--	--	--	--	--	--	--	--	--	--	--	--	--	--	--	--	--	--	--	--	--	--	--	--	--	--	--	--	--	--	--	--	--	--	--	--	--	--	--	--	--	--	--	--	--	--	--	--	--	--	--	--	--	--	--	--	--	--	--	--	--	--	--	--	--	--	--	--	--	--	--	--	--	--	--	--	--	--	--	--	--	--	--	--	--	--	--	--	--	--	--	--	--	--	--	--	--	--	--	--	--	--	--	--	--	--	--	--	--	--	--	--	--	--	--	--	--	--	--	--	--	--	--	--	--	--	--	--	--	--	--	--	--	--	--	--	--	--	--	--	--	--	--	--	--	--	--	--	--	--	--	--	--	--	--	--	--	--	--	--	--	--	--	--	--	--	--	--	--	--	--	--	--	--	--	--	--	--	--	--	--	--	--	--	--	--	--	--	--	--	--	--	--	--	--	--	--	--	--	--	--	--	--	--	--	--	--	--	--	--	--	--	--	--	--	--	--	--	--	--	--	--	--	--	--	--	--	--	--	--	--	--	--	--	--	--	--	--	--	--	--	--	--	--	--	--	--	--	--	--	--	--	--	--	--	--	--	--	--	--	--	--	--	--	--	--	--	--	--	--	--	--	--	--	--	--	--	--	--	--	--	--	--	--	--	--	--	--	--	--	--	--	--	--	--	--	--	--	--	--	--	--	--	--	--	--	--	--	--	--	--	--	--	--	--	--	--	--	--	--	--	--	--	--	--	--	--	--	--	--	--	--	--	--	--	--	--	--	--	--	--	--	--	--	--	--	--	--	--	--	--	--	--	--	--	--	--	--	--	--	--	--	--	--	--	--	--	--	--	--	--	--	--	--	--	--	--	--	--	--	--	--	--	--	--	--	--	--	--	--	--	--	--	--	--	--	--	--	--	--	--	--	--	--	--	--	--	--	--	--	--	--	--	--	--	--	--	--	--	--	--	--	--	--	--	--	--	--	--	--	--	--	--	--	--	--	--	--	--	--	--	--	--	--	--	--	--	--	--	--	--	--	--	--	--	--	--	--	--	--	--	--	--	--	--	--	--	--	--	--	--	--	--	--	--	--	--	--	--	--	--	--	--	--	--	--	--	--	--	--	--	--	--	--	--	--	--	--	--	--	--	--	--	--	--	--	--	--	--	--	--	--	--	--	--	--	--	--	--	--	--	--	--	--	--	--	--	--	--	--	--	--	--	--	--	--	--	--	--	--	--	--	--	--	--	--	--	--	--	--	--	--	--	--	--	--	--	--	--	--	--	--	--	--	--	--	--	--	--	--	--	--	--	--	--	--	--	--	--	--	--	--	--	--	--	--	--	--	--	--	--	--	--	--	--	--	--	--	--	--	--	--	--	--	--	--	--	--	--	--	--	--	--	--	--	--	--	--	--	--	--	--	--	--	--	--	--	--	--	--	--	--	--	--	--	--	--	--	--	--	--	--	--	--	--	--	--	--	--	--	--	--	--	--	--	--	--	--	--	--	--	--	--	--	--	--	--	--	--	--	--	--	--	--	--	--	--	--	--	--	--	--	--	--	--	--	--	--	--	--	--	--	--	--	--	--	--	--	--	--	--	--	--	--	--	--	--	--	--	--	--	--	--	--	--	--	--	--	--	--	--	--	--	--	--	--	--	--	--	--	--	--	--	--	--	--	--	--	--	--	--	--	--	--	--	--	--	--	--	--	--	--	--	--	--	--	--	--	--	--	--	--	--	--	--	--	--	--	--	--	--	--	--	--	--	--	--	--	--	--	--	--	--	--	--	--	--	--	--	--	--	--	--	--	--	--	--	--	--	--	--	--	--	--	--	--	--	--	--	--	--	--	--	--	--	--	--	--	--	--	--	--	--	--	--	--	--	--	--	--	--	--	--	--	--	--	--	--	--	--	--	--	--	--	--	--	--	--	--	--	--	--	--	--	--	--	--	--	--	--	--	--	--	--	--	--	--	--	--	--	--	--	--	--	--	--	--	--	--	--	--	--	--	--	--	--	--	--	--	--	--	--	--	--	--	--	--	--	--	--	--	--	--	--	--	--	--	--	--	--	--	--	--	--	--	--	--	--	--	--	--	--	--	--	--	--	--	--	--	--	--	--	--	--	--	--	--	--	--	--	--	--	--	--	--





PIP SUMMARY

Time Mark Every 60 S


Casing Collars

Parameters			
DLIS Name	Description	Value	
CCLD	CCL-L: Casing Collar Locator	12	IN
CCLT	CCL reset delay	0.3	V
	CCL Detection Level		
DO	System and Miscellaneous	5.5	M
PP	Depth Offset for Playback		
	Playback Processing	NORMAL	

Format: PERFO Vertical Scale: 1:200 Graphics File Created: 23-Oct-2008 12:11

OP System Version: 16C0-147			
MCM			
SHM_GUN	16C0-147	CCL-L	16C0-147

Input DLIS Files					
DEFAULT	PERFO_067LUP	FN:66	PRODUCER	23-Oct-2008 12:00	2692.5 M 2632.9 M
Output DLIS Files					
DEFAULT	PERFO_069PUP	FN:68	PRODUCER	23-Oct-2008 12:11	



Water Dump Pass

MAXIS Field Log

Input DLIS Files					
DEFAULT	PERFO_062LUP	FN:61	PRODUCER	23-Oct-2008 09:41	2691.7 M 2635.6 M
Output DLIS Files					
DEFAULT	PERFO_064PUP	FN:63	PRODUCER	23-Oct-2008 09:51	2694.4 M 2638.3 M

OP System Version: 16C0-147

MCM

SHM_GUN

16C0-147

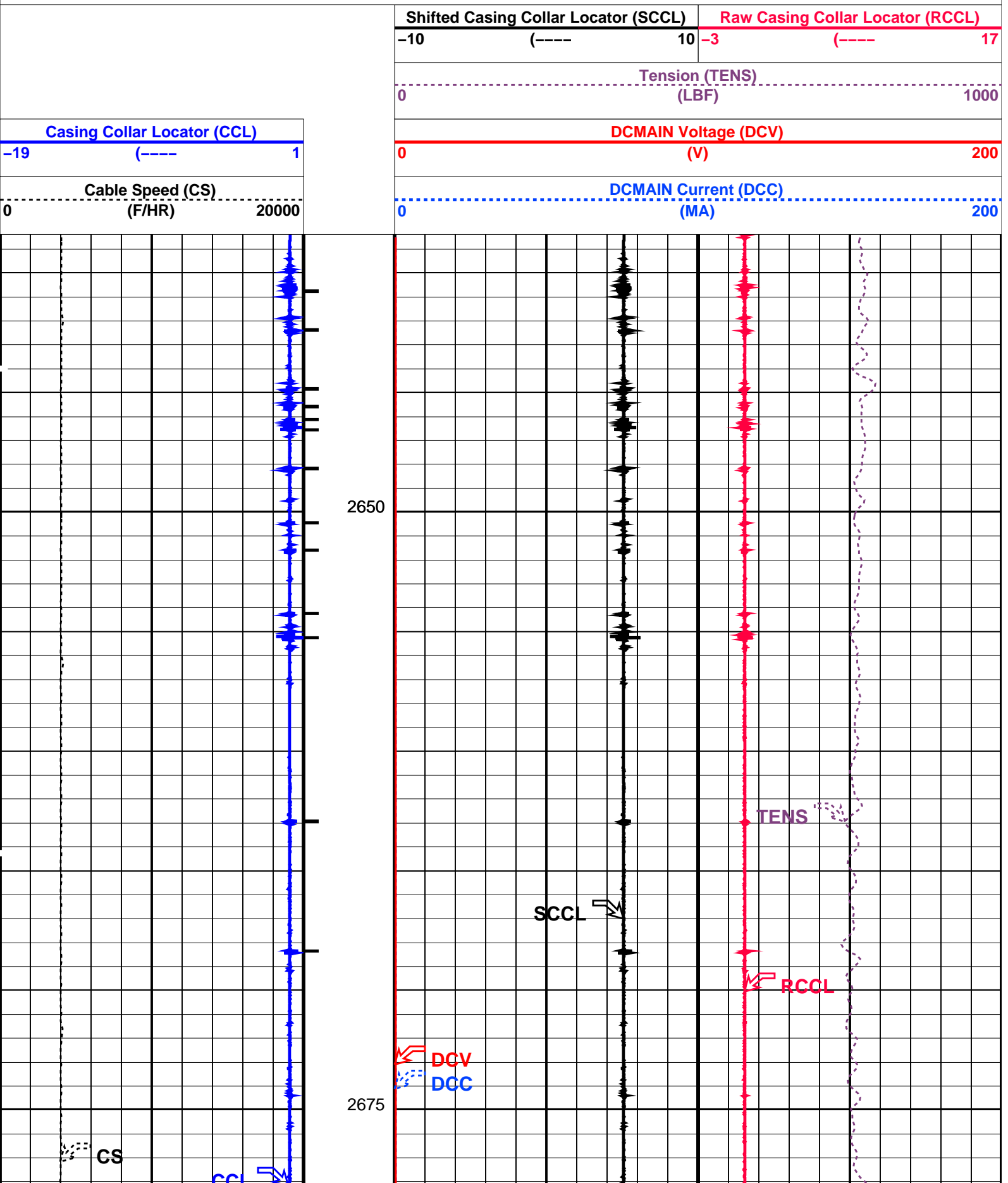
CCL-L

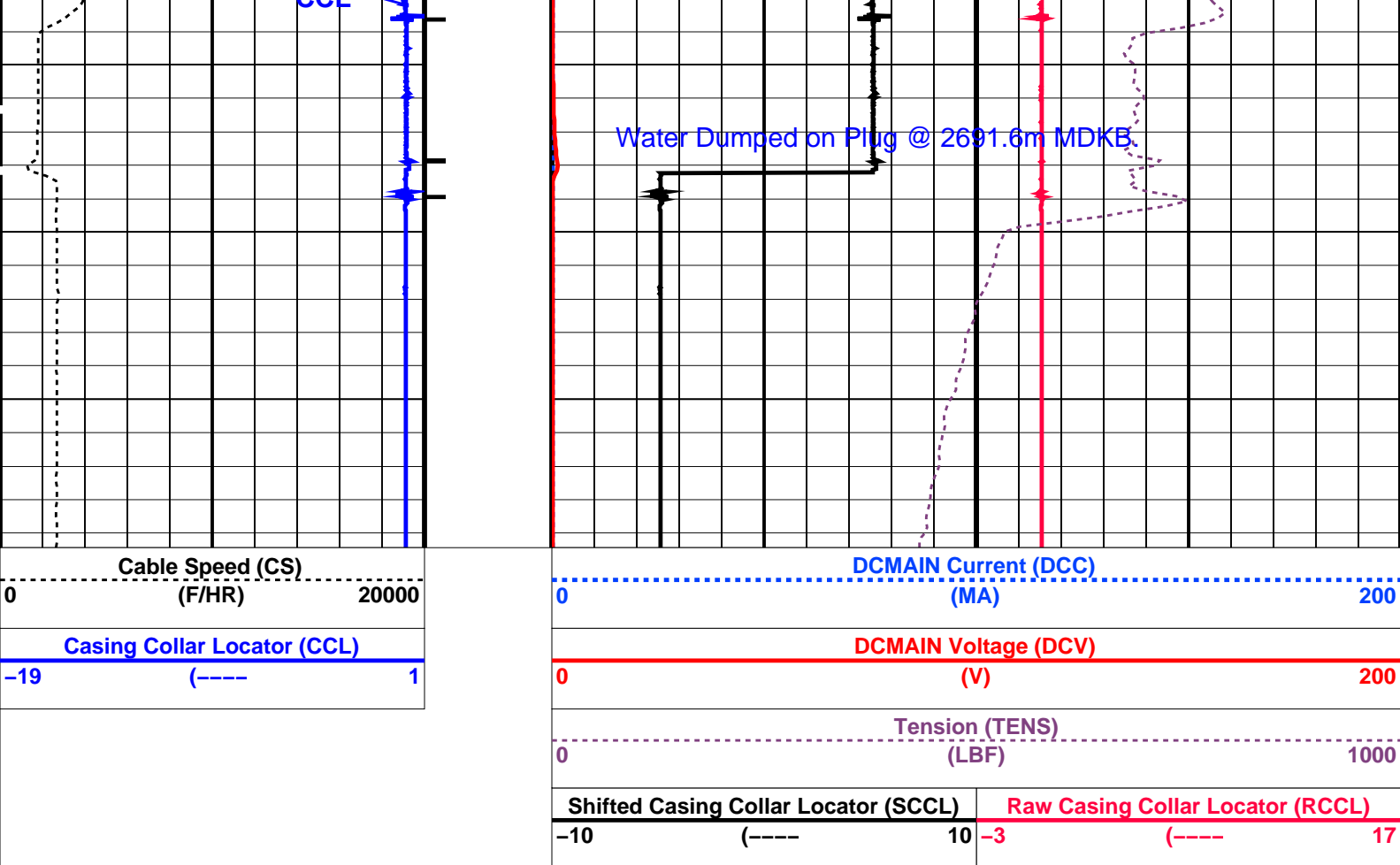
16C0-147

PIP SUMMARY

└─ Casing Collars

Time Mark Every 60 S





PIP SUMMARY

← Casing Collars

Time Mark Every 60 S

Parameters

DLIS Name	Description	Value
CCLD	CCL-L: Casing Collar Locator	12 IN
CCLT	CCL reset delay	0.3 V
	CCL Detection Level	
	System and Miscellaneous	
DO	Depth Offset for Playback	2.7 M
PP	Playback Processing	NORMAL

Format: PERFO Vertical Scale: 1:200 Graphics File Created: 23-Oct-2008 09:51

OP System Version: 16C0-147

MCM

SHM_GUN 16C0-147 CCL-L 16C0-147

Input DLIS Files

DEFAULT PERFO_062LUP FN:61 PRODUCER 23-Oct-2008 09:41 2691.7 M 2635.6 M

Output DLIS Files

DEFAULT PERFO_064PUP FN:63 PRODUCER 23-Oct-2008 09:51



Log Away From Plug Setting

Output DLIS Files

DEFAULT MPBT_052LUP FN:51 PRODUCER 23-Oct-2008 06:07 2684.7 M 2635.6 M

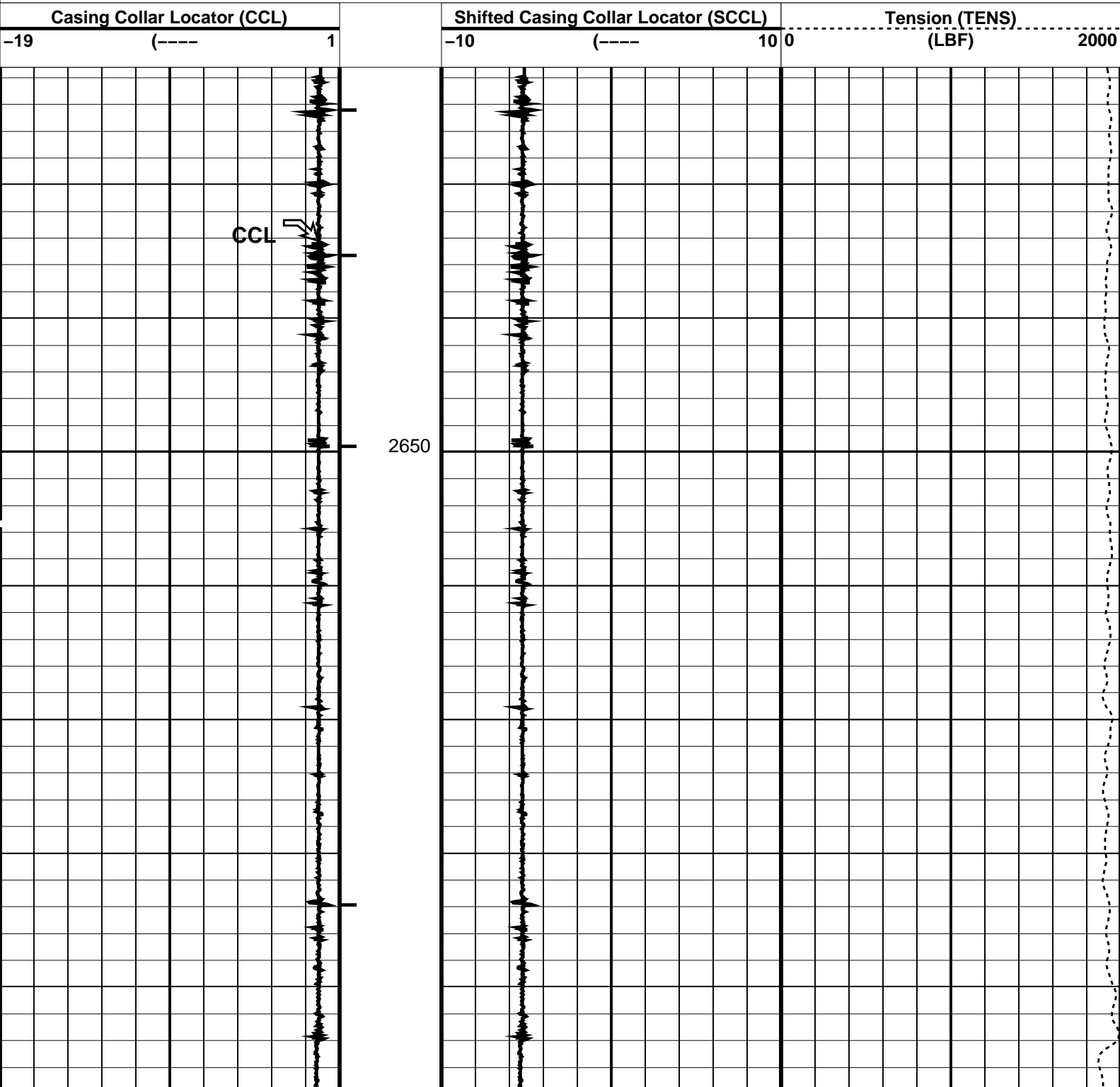
OP System Version: 16C0-147
MCM

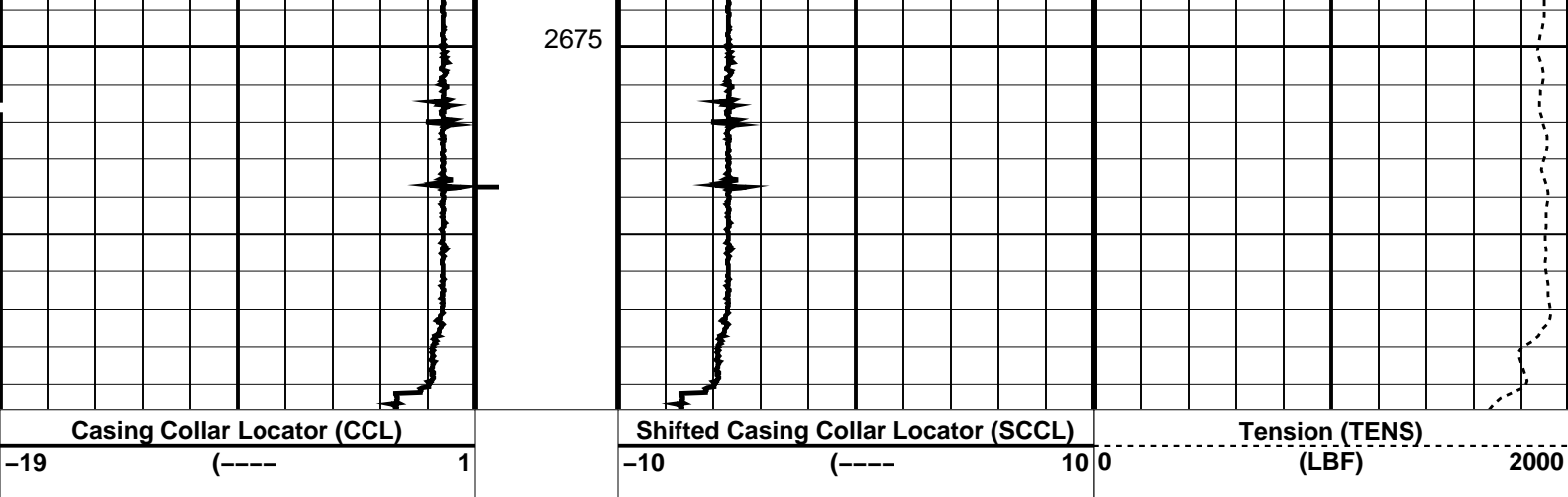
MPEX-5.5" 17lb/ft MPSU-BA 16C0-147
CCL-L 16C0-147

PIP SUMMARY

└─ Casing Collars

Time Mark Every 60 S





PIP SUMMARY

Time Mark Every 60 S

Parameters

DLIS Name	Description	Value
CCLD	CCL-L: Casing Collar Locator	12 IN
CCLT	CCL reset delay	0.3 V
	CCL Detection Level	

Format: PERFO Vertical Scale: 1:200 Graphics File Created: 23-Oct-2008 06:07

OP System Version: 16C0-147

MCM

MPEX-5.5" 17lb/ft MPSU-BA 16C0-147
CCL-L 16C0-147

Output DLIS Files

DEFAULT MPBT_052LUP FN:51 PRODUCER 23-Oct-2008 06:07



5 1/2"17lb/ft Posiset Plug
Top of Seal @ 2691.1m MDKB

MAXIS Field Log

Output DLIS Files

DEFAULT MPBT_051LUP FN:50 PRODUCER 23-Oct-2008 05:18

OP System Version: 16C0-147

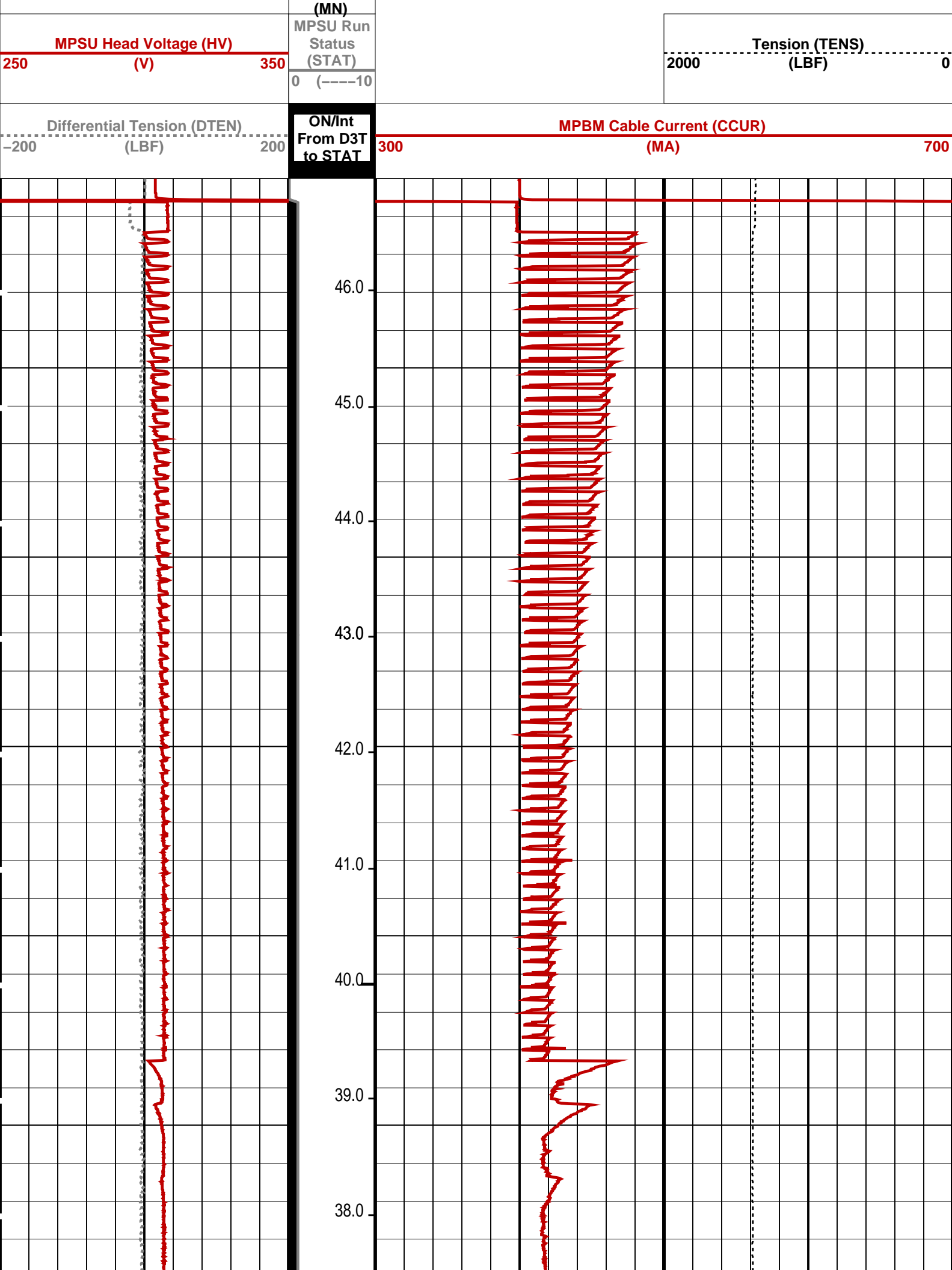
MCM

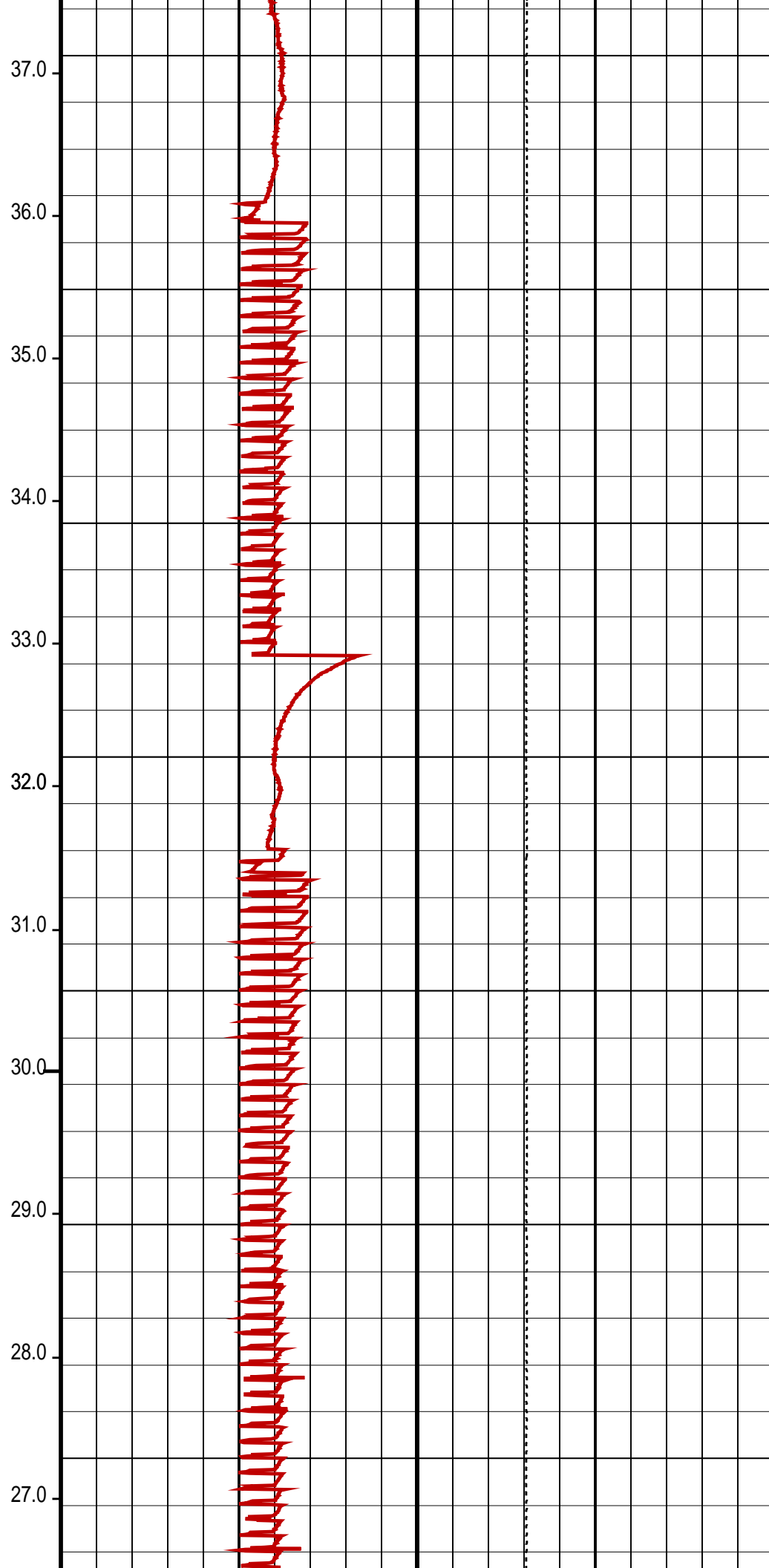
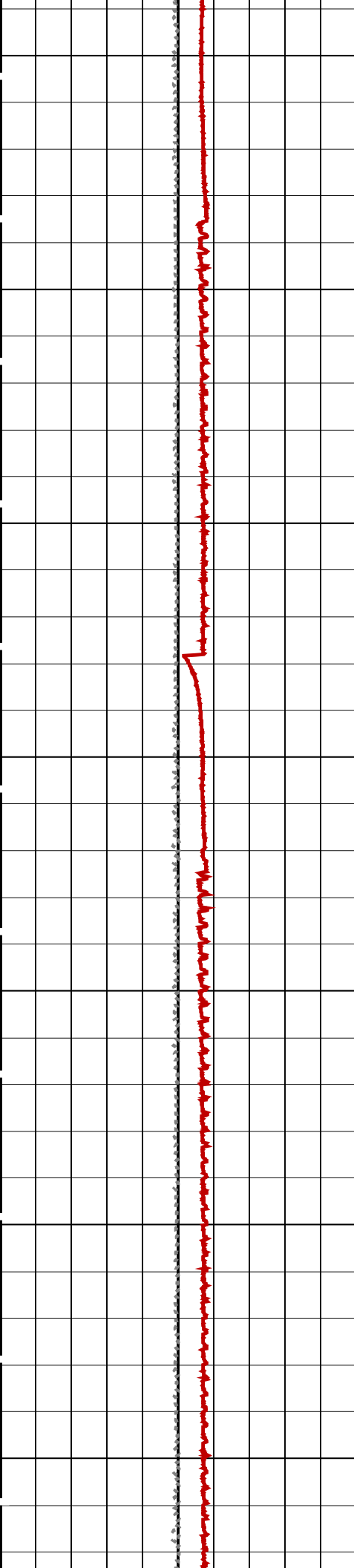
MPEX-5.5" 17lb/ft MPSU-BA 16C0-147
CCL-L 16C0-147

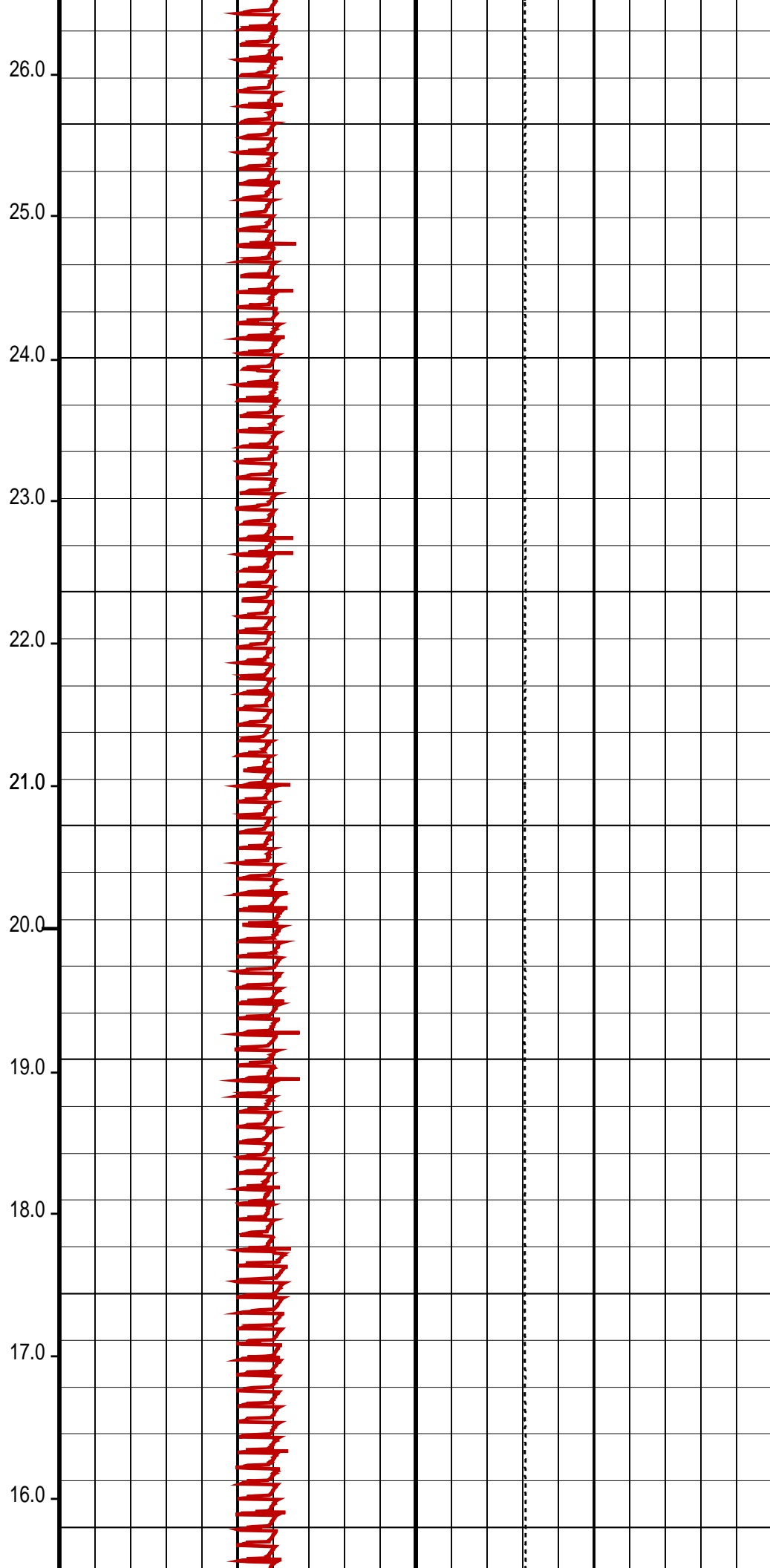
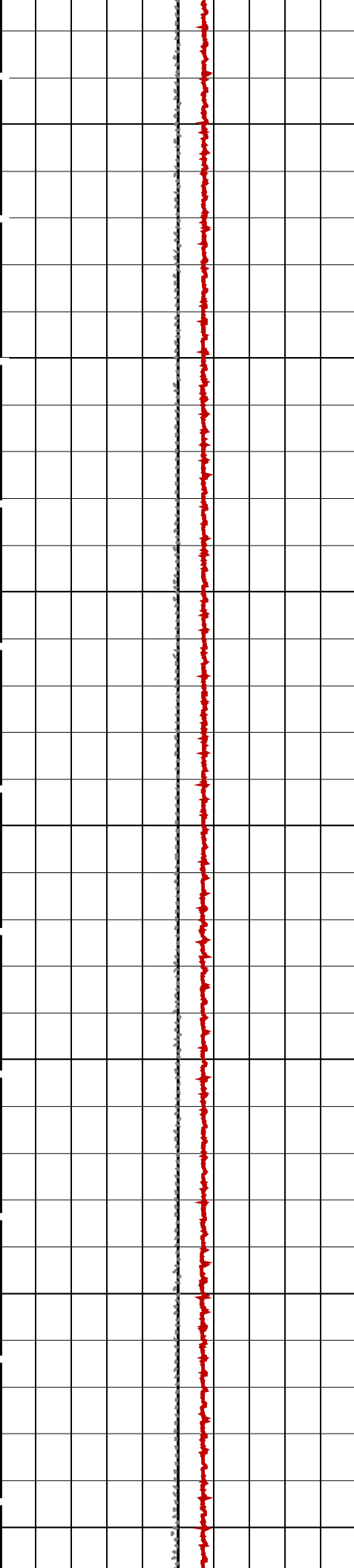
PIP SUMMARY

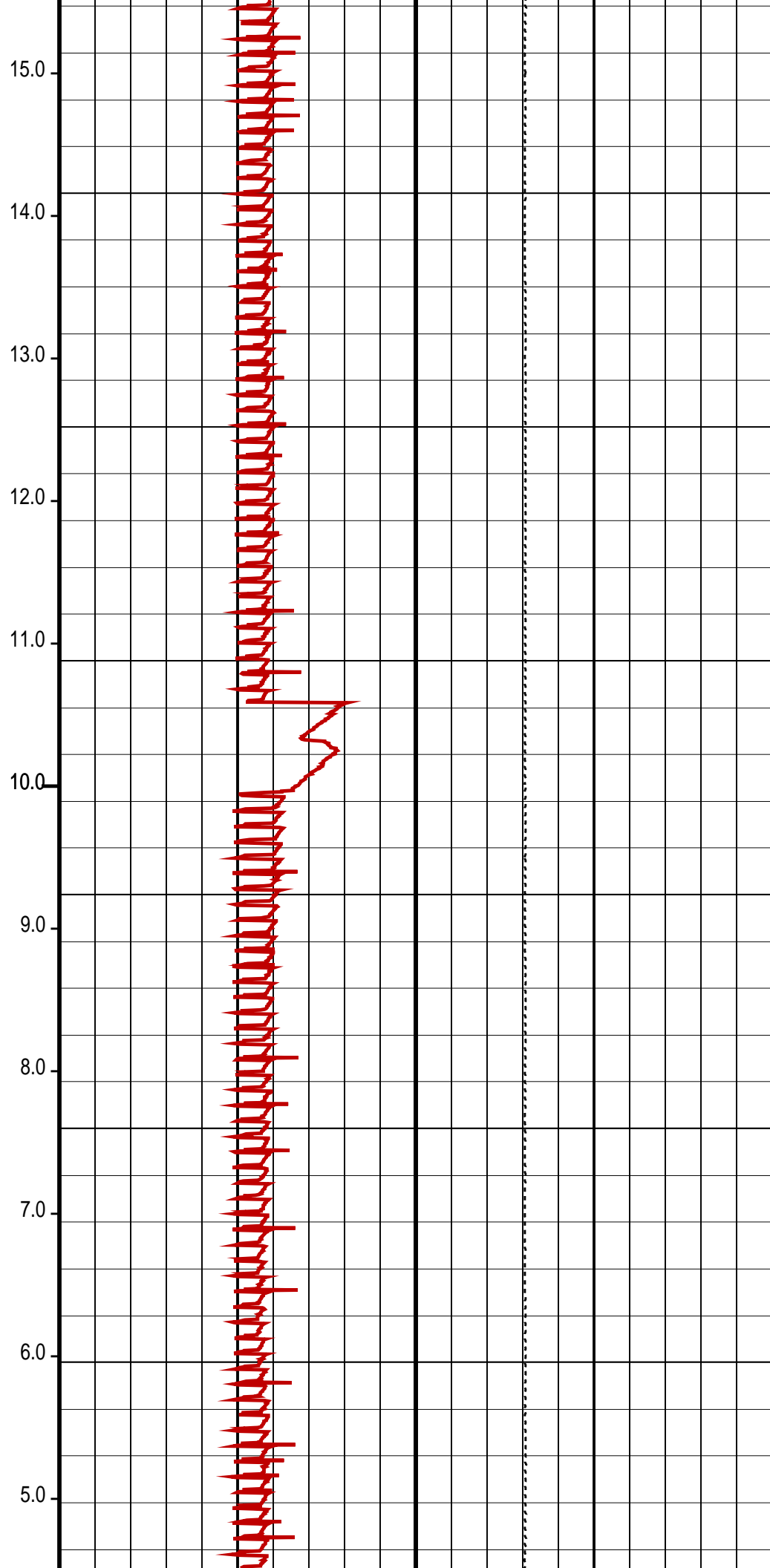
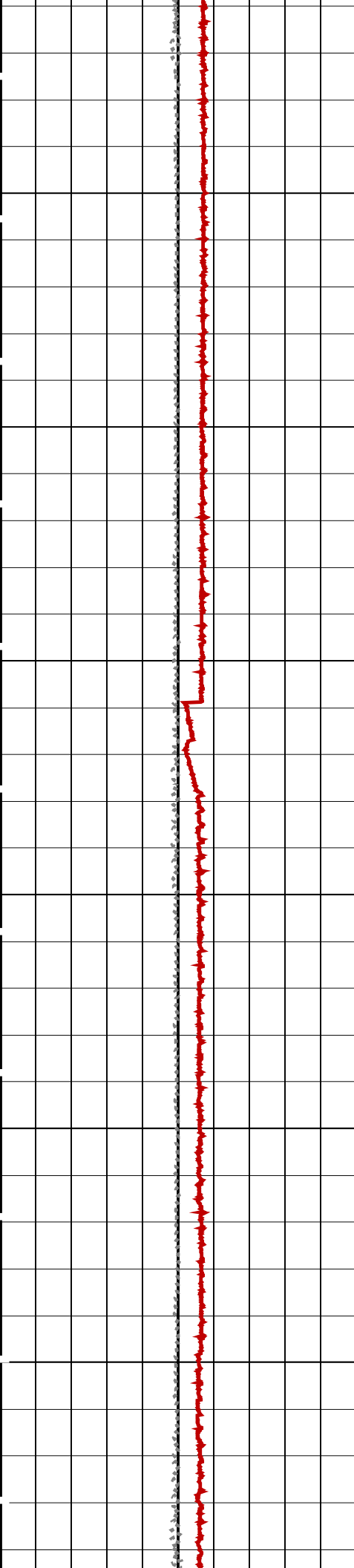
Time Mark Every 60 S

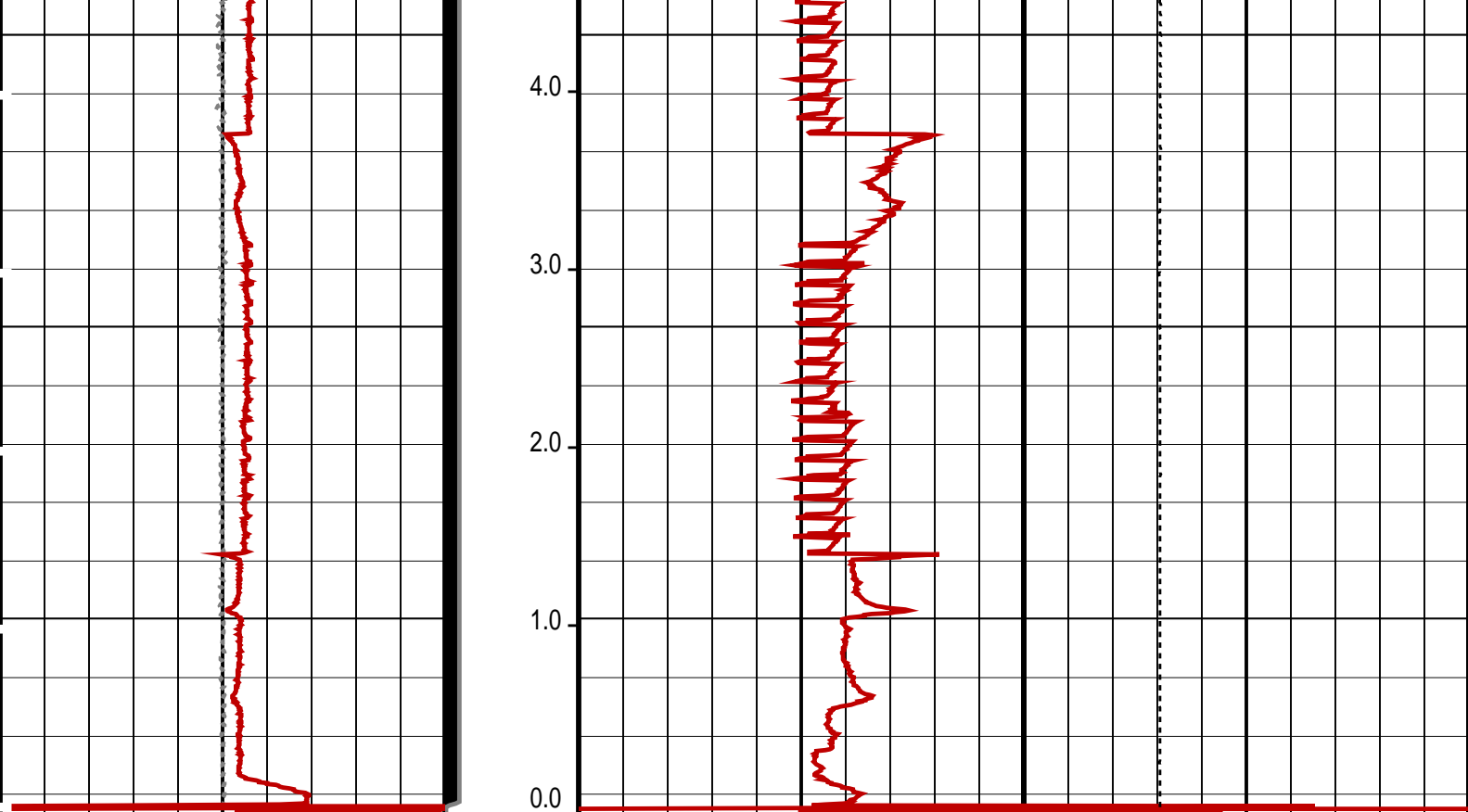
RUN Time
(RTIM)











Differential Tension (DTEN) (LBF)	ON/Int From D3T to STAT	MPBM Cable Current (CCUR) (MA)
-200200		300700
MPSU Head Voltage (HV) (V)	MPSU Run Status (STAT)	Tension (TENS) (LBF)
250350	0 (----10)	20000
	RUN Time (RTIM) (MN)	

PIP SUMMARY

- └ MPSU Run Time Every 1 MN
- └ MPSU Run Time Every 10 MN

Time Mark Every 60 S

Parameters

DLIS Name	Description	Value
MPSU-BA: MECHANICAL PLUGBACK SETTING UNIT IPUMP	Intensifier Pump	TRUE

Format: MPBT Vertical Scale: 1:600 Graphics File Created: 23-Oct-2008 05:18

OP System Version: 16C0-147
MCM

MPEX-5.5" CCL-L	17lb/ft 16C0-147	MPSU-BA	16C0-147
--------------------	---------------------	---------	----------

Output DLIS Files

DEFAULT	MPBT_051LUP	FN:50	PRODUCER	23-Oct-2008 05:18
---------	-------------	-------	----------	-------------------



Plug Correlation Pass

Output DLIS Files

DEFAULT MPBT_043LUP FN:42 PRODUCER 23-Oct-2008 03:50 2682.5 M 2624.3 M

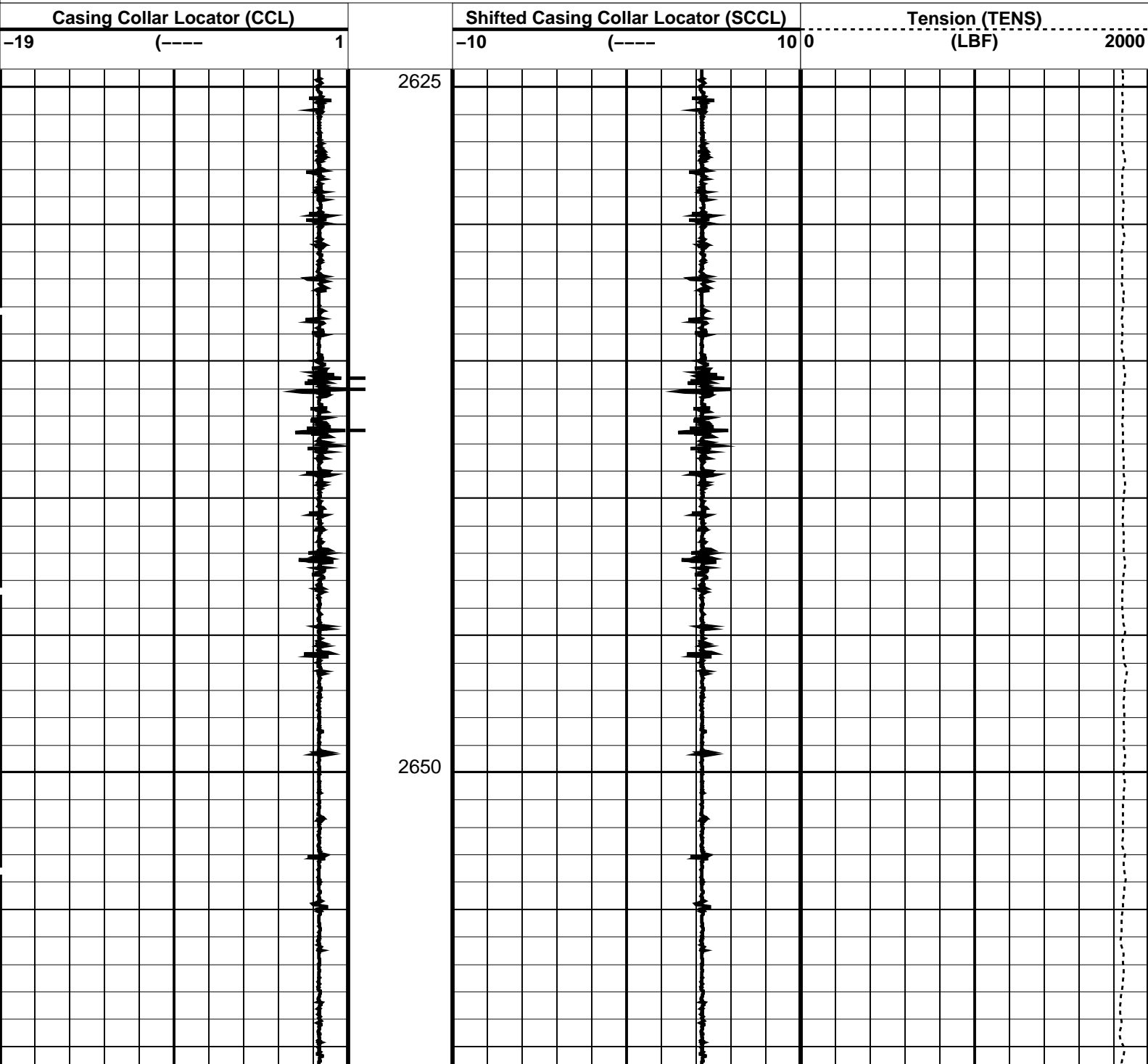
OP System Version: 16C0-147
MCM

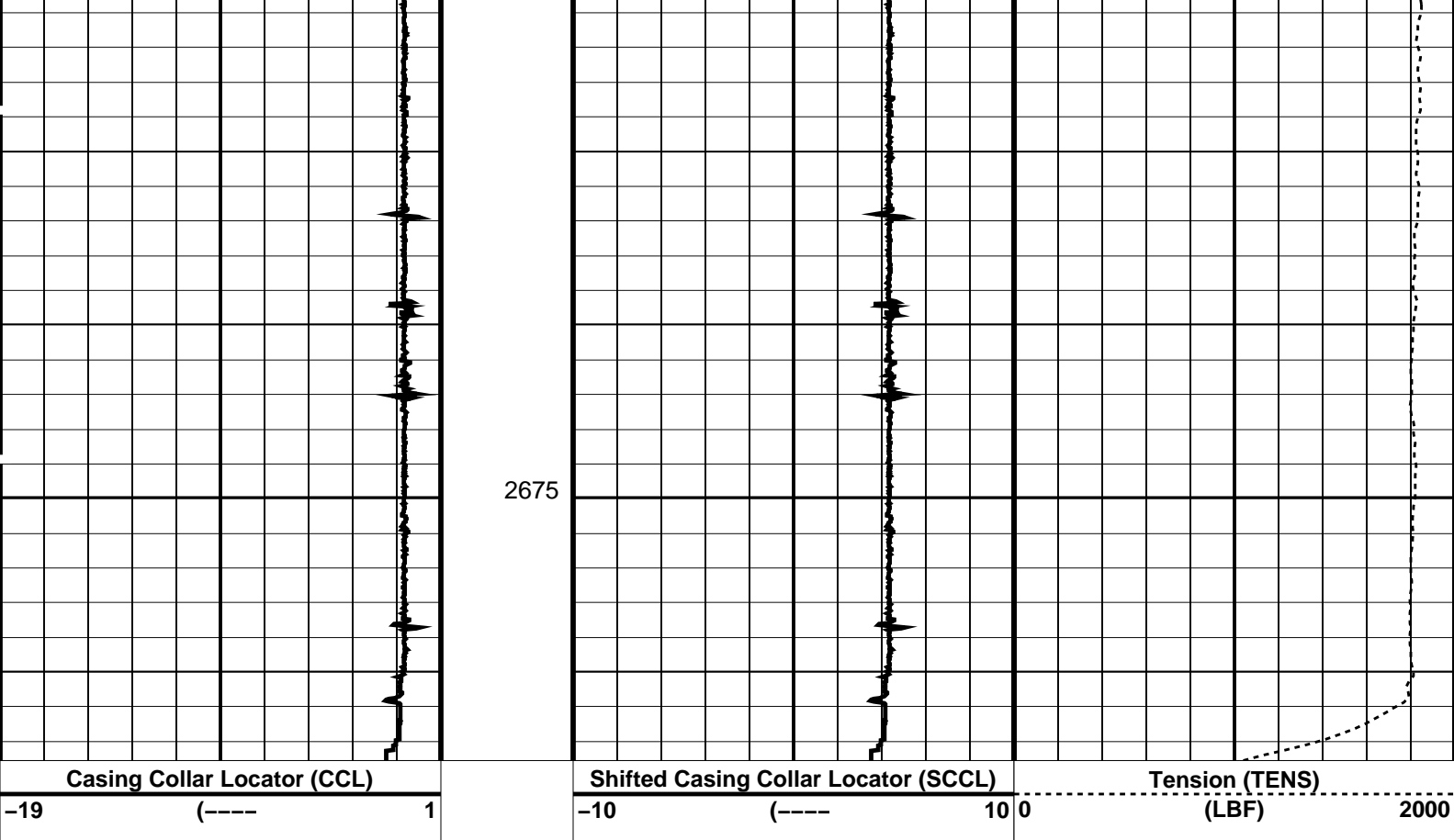
MPEX-5.5" 17lb/ft MPSU-BA 16C0-147
CCL-L 16C0-147

PIP SUMMARY

└─ Casing Collars

Time Mark Every 60 S





PIP SUMMARY

← Casing Collars

Time Mark Every 60 S

Parameters

DLIS Name	Description	Value
CCL-L: Casing Collar Locator		
CCLD	CCL reset delay	12 IN
CCLT	CCL Detection Level	0.3 V

Format: PERFO Vertical Scale: 1:200 Graphics File Created: 23-Oct-2008 03:50

OP System Version: 16C0-147
MCM

MPEX-5.5" 17lb/ft MPSU-BA 16C0-147
CCL-L 16C0-147

Output DLIS Files

DEFAULT MPBT_043LUP FN:42 PRODUCER 23-Oct-2008 03:50



5 1/2" Dummy Mpbt Plug

MAXIS Field Log

Input DLIS Files

Output DLIS Files

OP System Version: 16C0-147
MCM

MWP_GUN

16C0-147

MWGT-AA

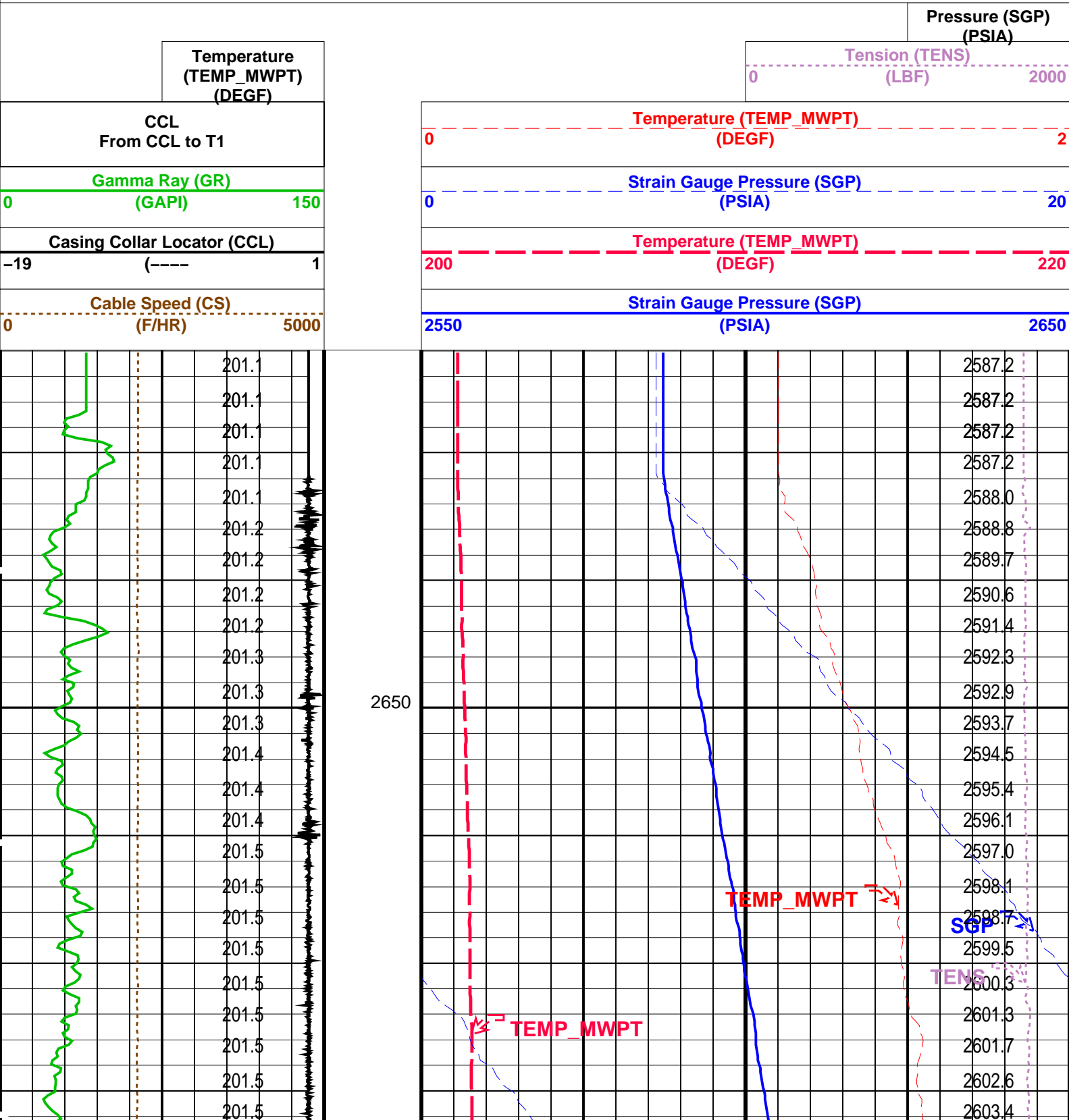
16C0-147

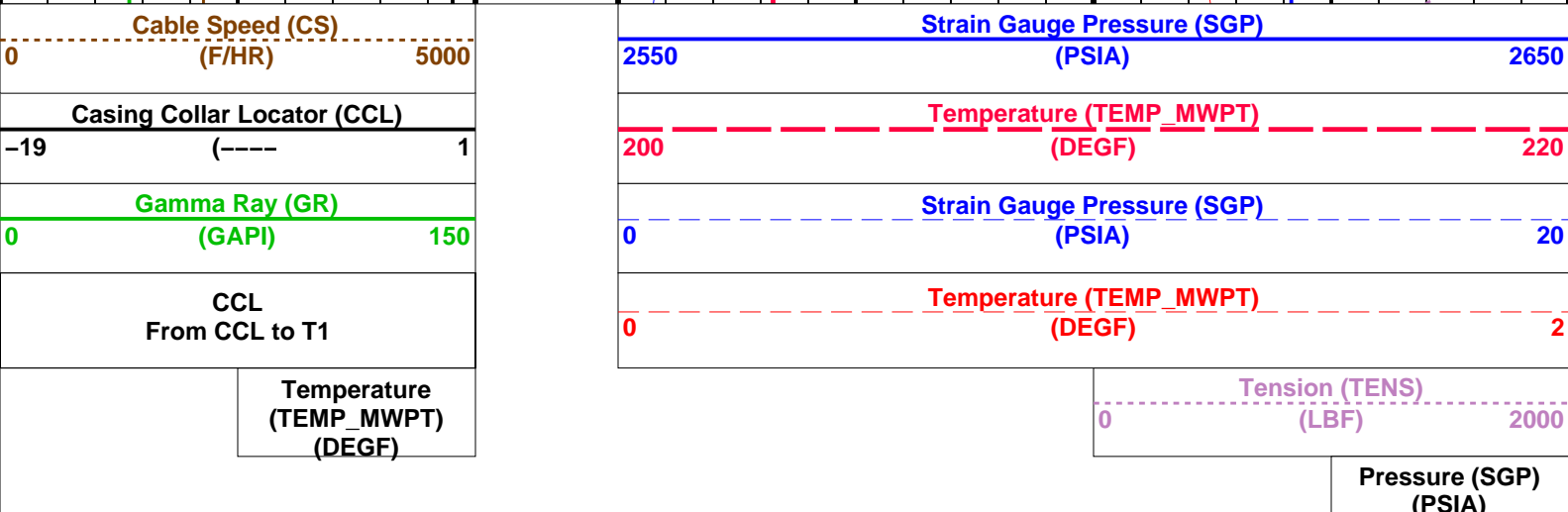
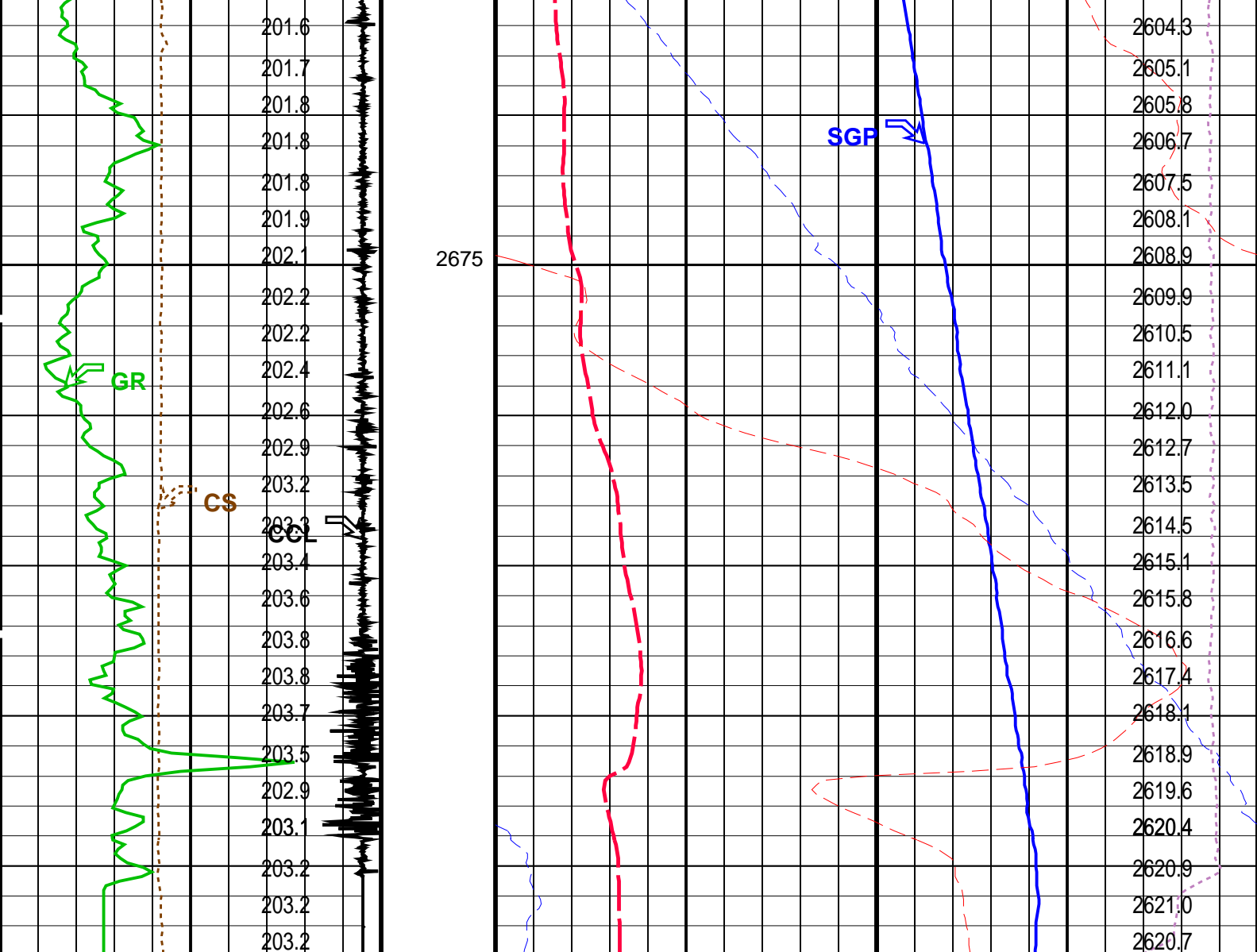
MWPT-CA

16C0-147

PIP SUMMARY

Time Mark Every 60 S





PIP SUMMARY

Time Mark Every 60 S

Parameters			
DLIS Name	Description	Value	
MWPT-CA: MEASUREMENT WHILE PERFORATING TOOL			
DEVI_FL_CORR	Deviation Angle for Flow Line Correction	0	DEG
FLD	Flow Line Density	1	G/C3
MWPT_NULL_SOURCE	MWPT NULL Temperature Source	TEMS	
MWPT_NULL_TEMP	MWPT NULL Temperature	0.0	DEGC
System and Miscellaneous			
DO	Depth Offset for Playback	0.3	M

PP

Playback Processing

NORMAL

Format: MWP

Vertical Scale: 1:200

Graphics File Created: 22-Oct-2008 15:49

OP System Version: 16C0-147

MCM

MWP_GUN

16C0-147

MWPT-CA

16C0-147

MWGT-AA

16C0-147

Input DLIS Files

DEFAULT

PERFO_025LUP

FN:24

PRODUCER

22-Oct-2008 15:42

2697.6 M

2638.0 M

Output DLIS Files

DEFAULT

PERFO_026PUP

FN:25

PRODUCER

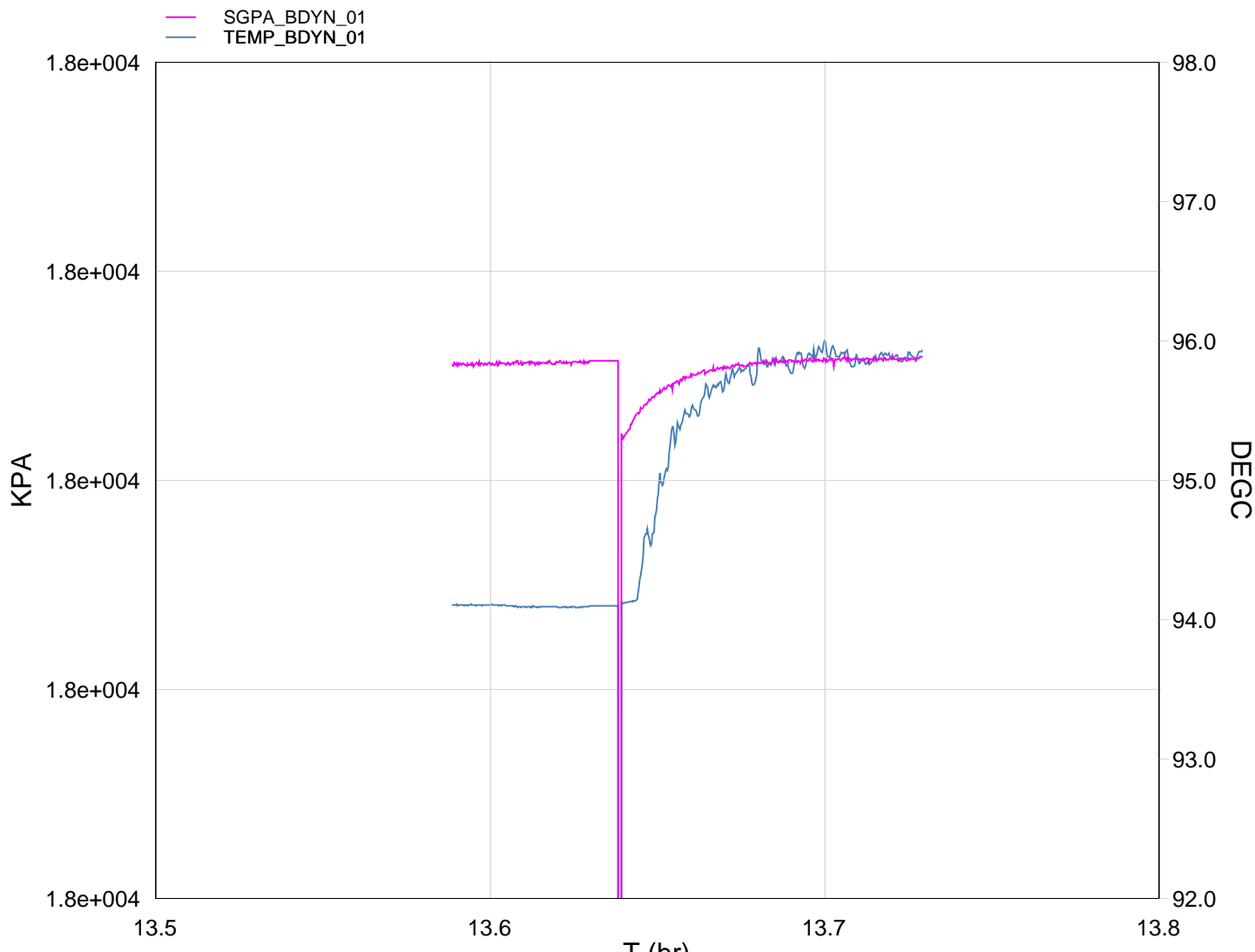
22-Oct-2008 15:49

Schlumberger

GUN # 1

2687.5m to 2689.5m MDKB

MAXIS Field Log



TIME	DEGF	PSIA
3300.0	204.62	2619.062
3240.0	204.56	2619.110
3180.0	204.65	2618.966
3120.0	204.41	2618.566
3060.0	203.85	2617.814
3000.0	201.44	2614.708
2940.0	201.36	2618.885
2880.0	201.36	2618.870
2820.0	201.39	2618.718

Schlumberger

Shooting Pass

MAXIS Field Log

Company: Esso Australia Pty Ltd. Well: A-16

Output DLIS Files

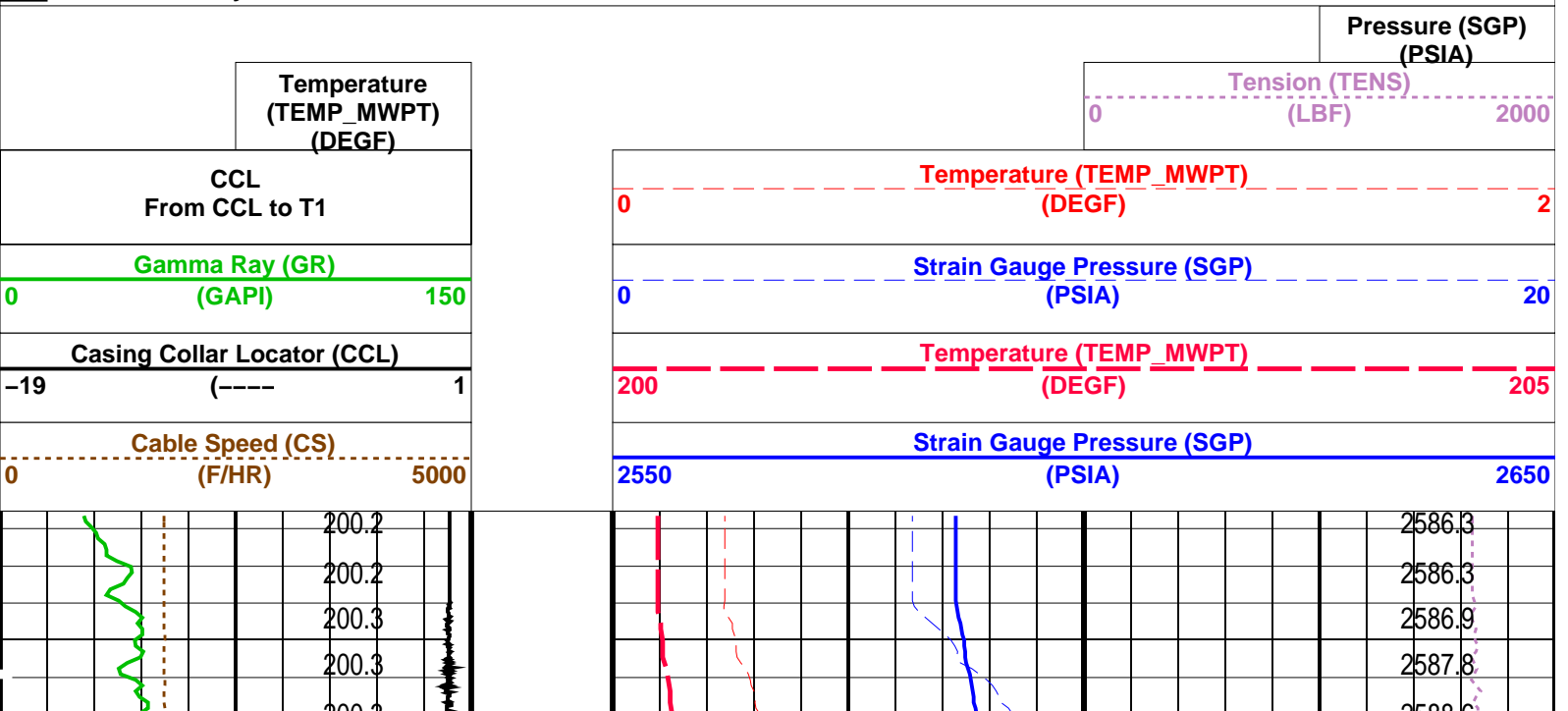
DEFAULT PERFO_022LUP FN:21 PRODUCER 22-Oct-2008 13:32 2690.6 M 2631.5 M

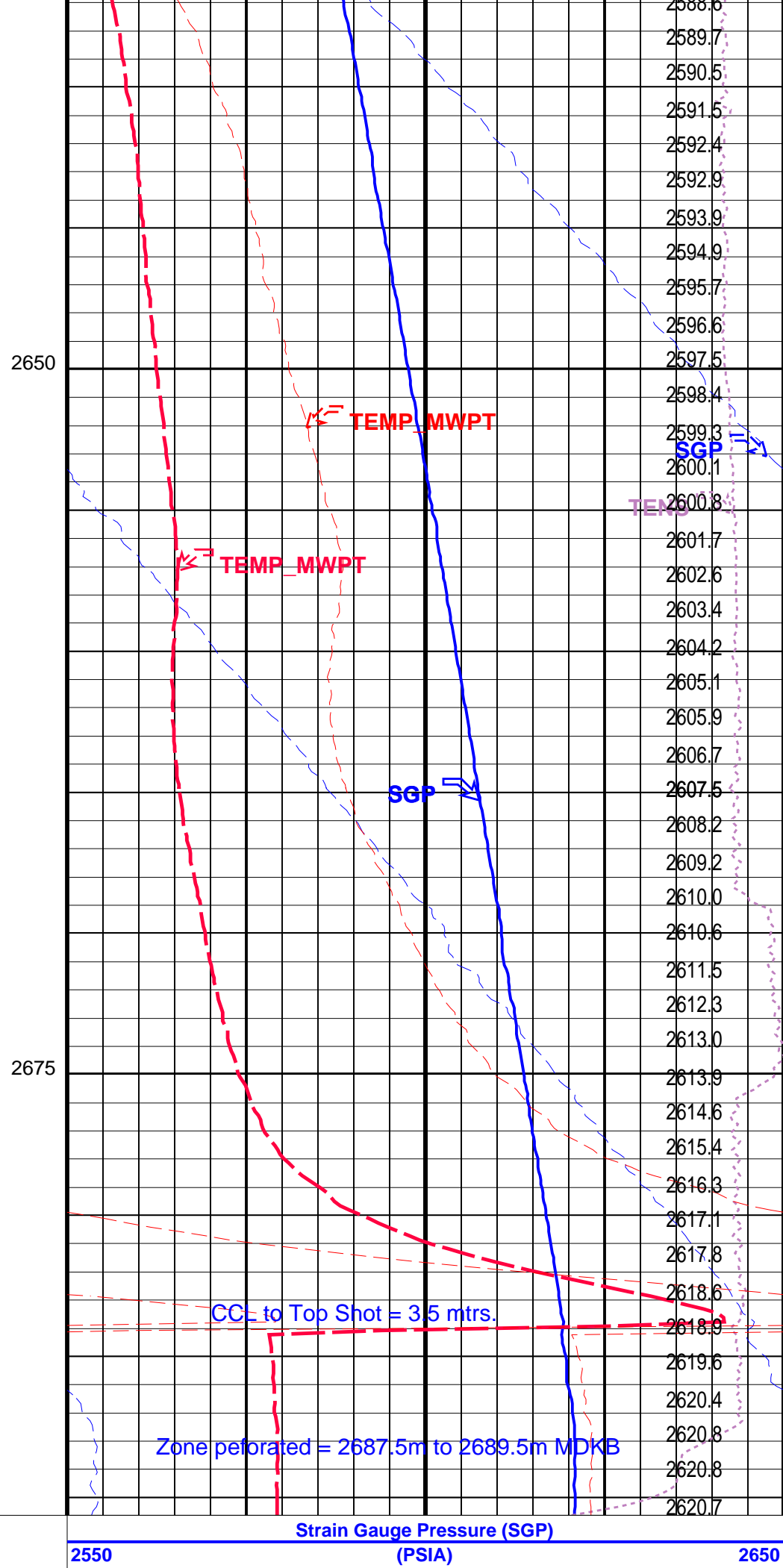
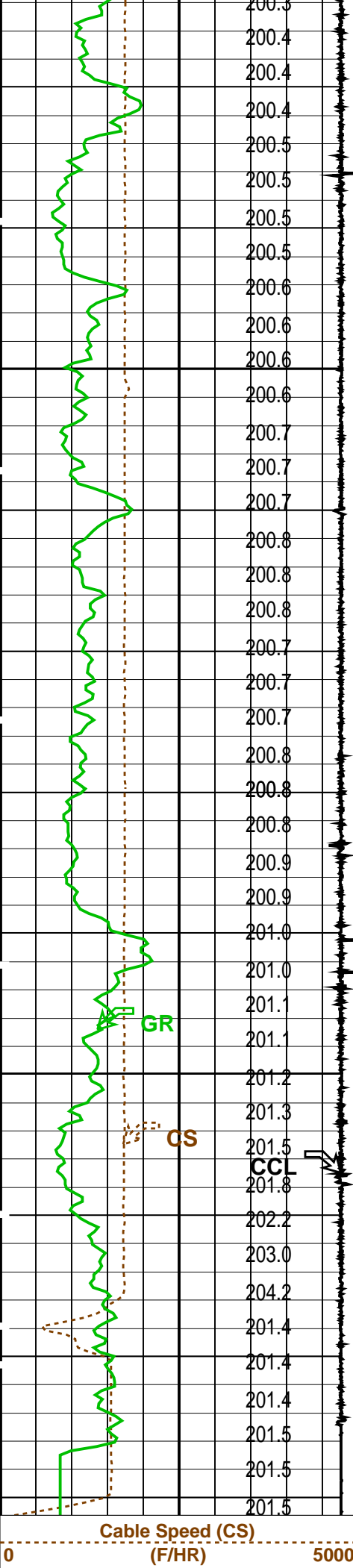
OP System Version: 16C0-147
MCM

MWP_GUN 16C0-147 MWPT-CA 16C0-147
MWGT-AA 16C0-147

PIP SUMMARY

Time Mark Every 60 S





Casing Collar Locator (CCL)		Temperature (TEMP_MWPT) (DEGF)	
-19	(----	200	205
Gamma Ray (GR) (GAPI)		Strain Gauge Pressure (SGP) (PSIA)	
0	150	0	20
CCL From CCL to T1		Temperature (TEMP_MWPT) (DEGF)	
		0	2
Temperature (TEMP_MWPT) (DEGF)		Tension (TENS) (LBF)	
		0	2000
		Pressure (SGP) (PSIA)	


PIP SUMMARY			
Time Mark Every 60 S			

Parameters			
DLIS Name	Description	Value	
MWPT-CA: MEASUREMENT WHILE PERFORATING TOOL			
DEVI_FL_CORR	Deviation Angle for Flow Line Correction	0	DEG
FLD	Flow Line Density	1	G/C3
MWPT_NULL_SOURCE	MWPT NULL Temperature Source	TEMS	
MWPT_NULL_TEMP	MWPT NULL Temperature	0.0	DEGC

Format: MWP	Vertical Scale: 1:200	Graphics File Created: 22-Oct-2008 13:32
-------------	-----------------------	--

OP System Version: 16C0-147			
MCM			
MWP_GUN	16C0-147	MWPT-CA	16C0-147
MWGT-AA	16C0-147		

Output DLIS Files			
DEFAULT	PERFO_022LUP	FN:21	PRODUCER 22-Oct-2008 13:32



Correlation Pass

MAXIS Field Log

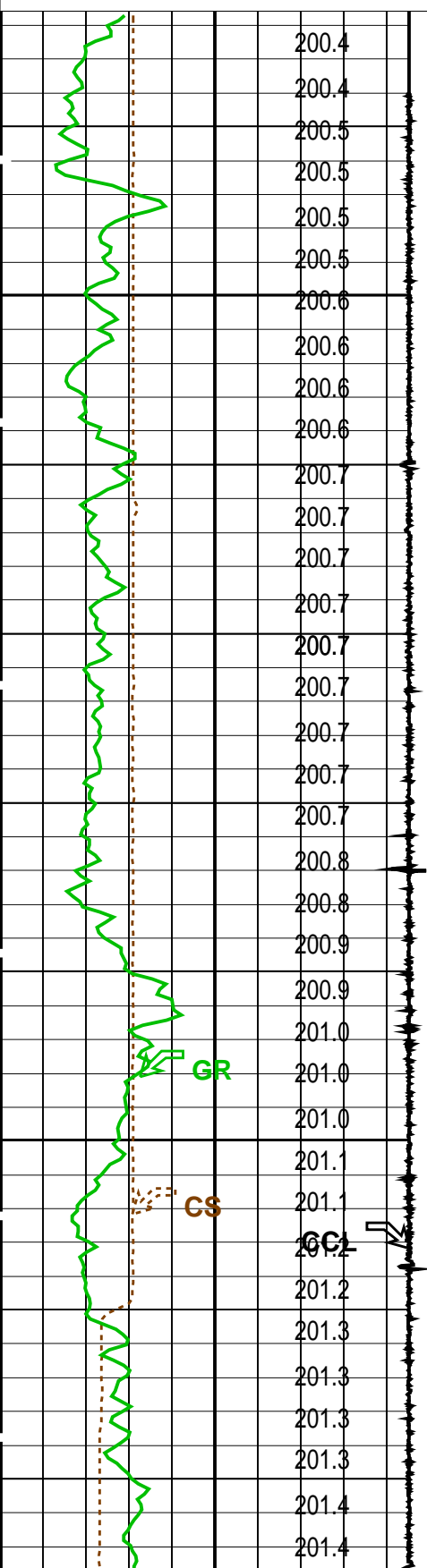
Company: Esso Australia Pty Ltd.	Well: A-16
----------------------------------	------------

Output DLIS Files					
DEFAULT	PERFO_021LUP	FN:20	PRODUCER	22-Oct-2008 13:23	2691.1 M 2641.5 M
OP System Version: 16C0-147					
MCM					
MWP_GUN	16C0-147	MWPT-CA	16C0-147		
MWGT-AA	16C0-147				

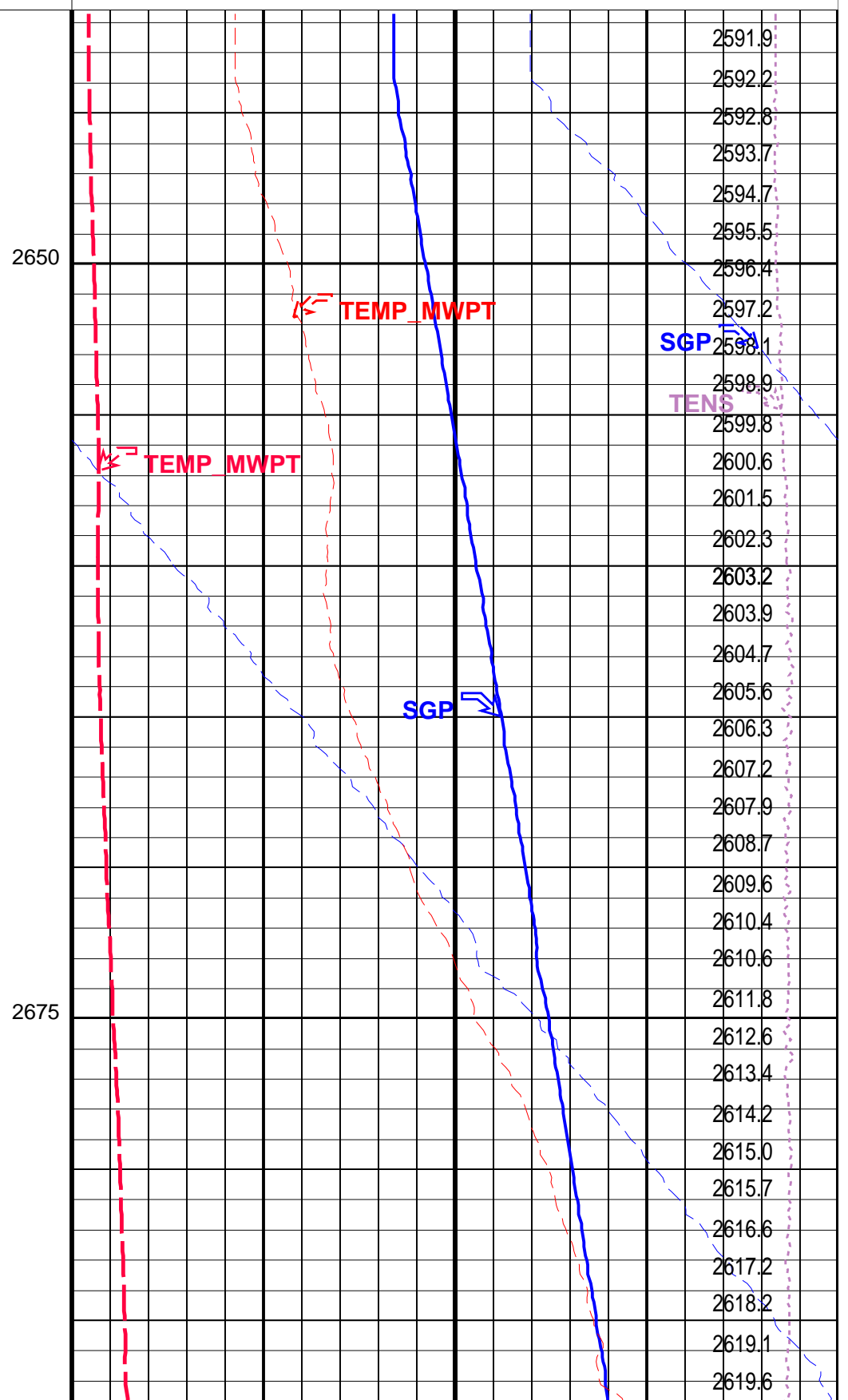
PIP SUMMARY			
Time Mark Every 60 S			

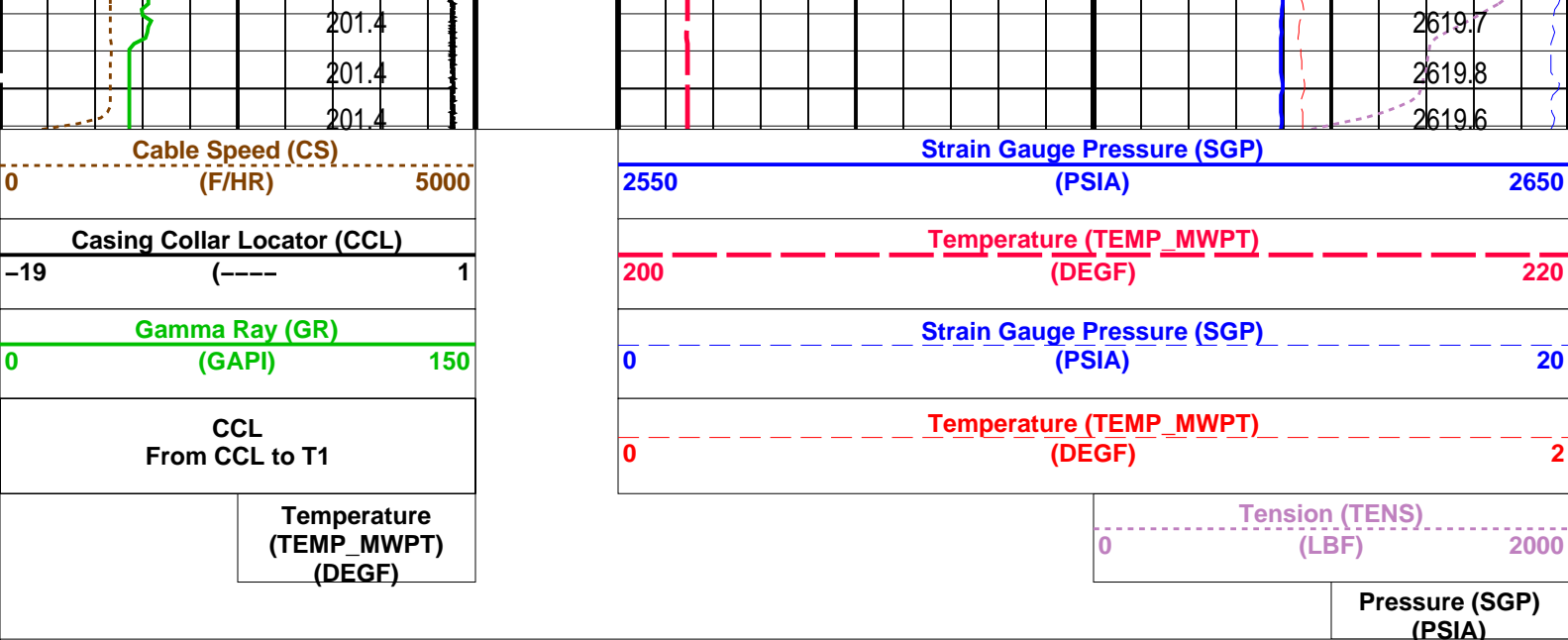
Temperature (TEMP_MWPT) (DEGF)		Pressure (SGP) (PSIA)	
		Tension (TENS) (LBF)	
		0	2000

CCL From CCL to T1		
Gamma Ray (GR) (GAPI)		
0		150
Casing Collar Locator (CCL) (----		
-19		1
Cable Speed (CS) (F/HR)		
0		5000



Temperature (TEMP_MWPT) (DEGF)		
0		2
Strain Gauge Pressure (SGP) (PSIA)		
0		20
Temperature (TEMP_MWPT) (DEGF)		
200		220
Strain Gauge Pressure (SGP) (PSIA)		
2550		2650





PIP SUMMARY

Time Mark Every 60 S

Parameters		
DLIS Name	Description	Value
MWPT-CA: MEASUREMENT WHILE PERFORATING TOOL		
DEVI_FL_CORR	Deviation Angle for Flow Line Correction	0 DEG
FLD	Flow Line Density	1 G/C3
MWPT_NULL_SOURCE	MWPT NULL Temperature Source	TEMS
MWPT_NULL_TEMP	MWPT NULL Temperature	0.0 DEGC

Format: MWP Vertical Scale: 1:200 Graphics File Created: 22-Oct-2008 13:23

OP System Version: 16C0-147			
MCM			
MWP_GUN	16C0-147	MWPT-CA	16C0-147
MWGT-AA	16C0-147		

Output DLIS Files			
DEFAULT	PERFO_021LUP	FN:20	PRODUCER 22-Oct-2008 13:23

Company:	Esso Australia Pty Ltd.	Schlumberger
Well:	A-16	
Field:	Bream A	
Rig :	Prod4 / Crane	
Country:	Australia	
2 1/8" Phased Powerjet Mwpt		
5 1/2" MPBT Plug		
Setting Record		