

Company: Ezzo Australia Pty Ltd.

Well: A-4c

Field: Fortescue

Rig: Crane / Prod 4 Country: Australia

2 1/8" Cement
Dump
Bailer

Rig: Crane / Prod 4
Field: Fortescue
Location: Gippsland
Well: A-4c
Company: Ezzo Australia Pty Ltd.

LOCATION

Gippsland Basin Bass Strait	Elev.: K.B. 42.29 m G.L. -69 m D.F. 42.29 m
Permanent Datum:	M.S.L.
Log Measured From:	D.F.
Drilling Measured From:	D.F.

State: Victoria	Max. Well Deviation 61 deg	Longitude 148°16'36.62"E	Latitude 038°24'31.39"S
-----------------	----------------------------	--------------------------	-------------------------

Logging Date

8-Jul-2008

Run Number

One

Depth Driller

3222 m

Schlumberger Depth

3210 m

Bottom Log Interval

3210 m

Top Log Interval

3140 m

Casing Fluid Type

Production Fluids

Salinity

Density

Fluid Level

1235 m

BIT/CASING/TUBING STRING

Bit Size

8.500 in

From

2068 m

To

3304 m

Casing/Tubing Size

7.000 in

Weight

26 lbm/ft

Grade

L-80

From

21.4396 m

To

3303.56 m

Maximum Recorded Temperatures

225 degF

Logger On Bottom

8-Jul-2008

21:12

Unit Number

889

Prod 4 / AUSL

Recorded By

G Wright, S Gilbert

Witnessed By

G Rimmer

Run 1

Oil Density
Water Salinity
Gas Gravity

Bo

Bw

1/Bg

Bubble Point Pressure

Bubble Point Temperature

Solution GOR

Maximum Deviation

61 deg

CEMENTING DATA

Primary/Squeeze

Primary

Casing String No

Lead Cement Type

Volume

Density

Water Loss

Additives

Tail Cement Type

Volume

Density

Water Loss

Additives

Expected Cement Top

Logging Date

Run Number

Depth Driller

Schlumberger Depth

Bottom Log Interval

Top Log Interval

Casing Fluid Type

Salinity

Density

Fluid Level

BIT/CASING/TUBING STRING

Bit Size

From

To

Casing/Tubing Size

Weight

Grade

From

To

Maximum Recorded Temperatures

Logger On Bottom

Time

Unit Number

Location

Recorded By

Witnessed By

DEPTH SUMMARY LISTING

Date Created: 12-JUN-2008 13:10:31

Depth System Equipment

Depth Measuring Device	Tension Device	Logging Cable
Type: IDW-BE Serial Number: 6373 Calibration Date: 4-Jan-2007 Calibrator Serial Number: 9 Calibration Cable Type: 2-32ZT Wheel Correction 1: -2 Wheel Correction 2: -4	Type: PSDS/OSDS Serial Number: 325357 Calibration Date: 10-Jun-2008 Calibrator Serial Number: 1174 Calibration Gain: 0.95 Calibration Offset: -137.00	Type: 2-32ZT Serial Number: 208196 Length: 7010.10 M Conveyance Method: Wireline Rig Type: Offshore_Fixed

Depth Control Parameters

Log Sequence:	Subsequent Log In the Well
Reference Log Name:	ExxonMobil Solar Composite Log
Reference Log Run Number:	
Reference Log Date:	

Depth Control Remarks

1. IDW used as primary depth control
2. Z-chart used as secondary backup
3.
4.
5.
6.

DISCLAIMER

THE USE OF AND RELIANCE UPON THIS RECORDED-DATA BY THE HEREIN NAMED COMPANY (AND ANY OF ITS AFFILIATES, PARTNERS, REPRESENTATIVES, AGENTS, CONSULTANTS AND EMPLOYEES) IS SUBJECT TO THE TERMS AND CONDITIONS AGREED UPON BETWEEN SCHLUMBERGER AND THE COMPANY, INCLUDING: (a) RESTRICTIONS ON USE OF THE RECORDED-DATA; (b) DISCLAIMERS AND WAIVERS OF WARRANTIES AND REPRESENTATIONS REGARDING COMPANY'S USE OF AND RELIANCE UPON THE RECORDED-DATA; AND (c) CUSTOMER'S FULL AND SOLE RESPONSIBILITY FOR ANY INFERENCE DRAWN OR DECISION MADE IN CONNECTION WITH THE USE OF THIS RECORDED-DATA.

OTHER SERVICES1
OS1: RST-C Sigma Survey
OS2: 2 1/8" Powerjet
OS3: 7" Mpbtt








REMARKS: RUN NUMBER 1
Log correlated to SLB Dummy Plug Log Completed on the 15/6/2008
Objective: Dump 1m of cement on top of a 7"posiset plug set on the 15/6/2008 with the
Top of Seal @ 3210m MDKB.
Max Deviation = 61 deg @ 2075m MDKB
CCL to Bottom of Dump Bailers = 12m

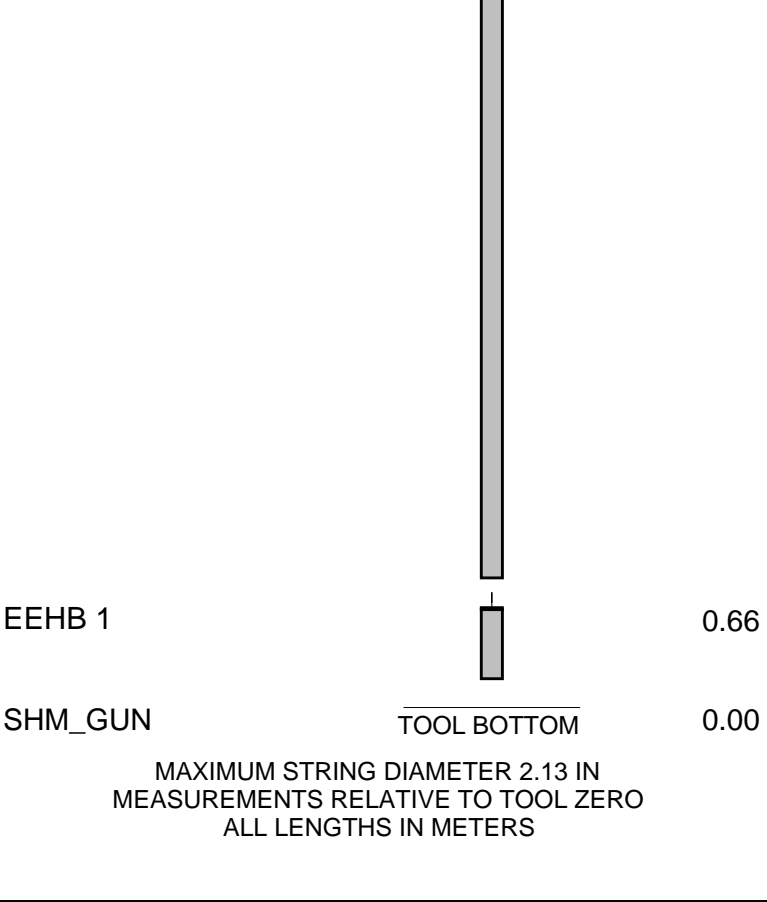
Cement Dumped @ 3209m MDKB
CCL To Bottom of Bailer = 12m
CCL Stop Depth = 3197m MDKB

Schlumberger Crew: K Kerr , D Hiskens , G Martin , C Marshall

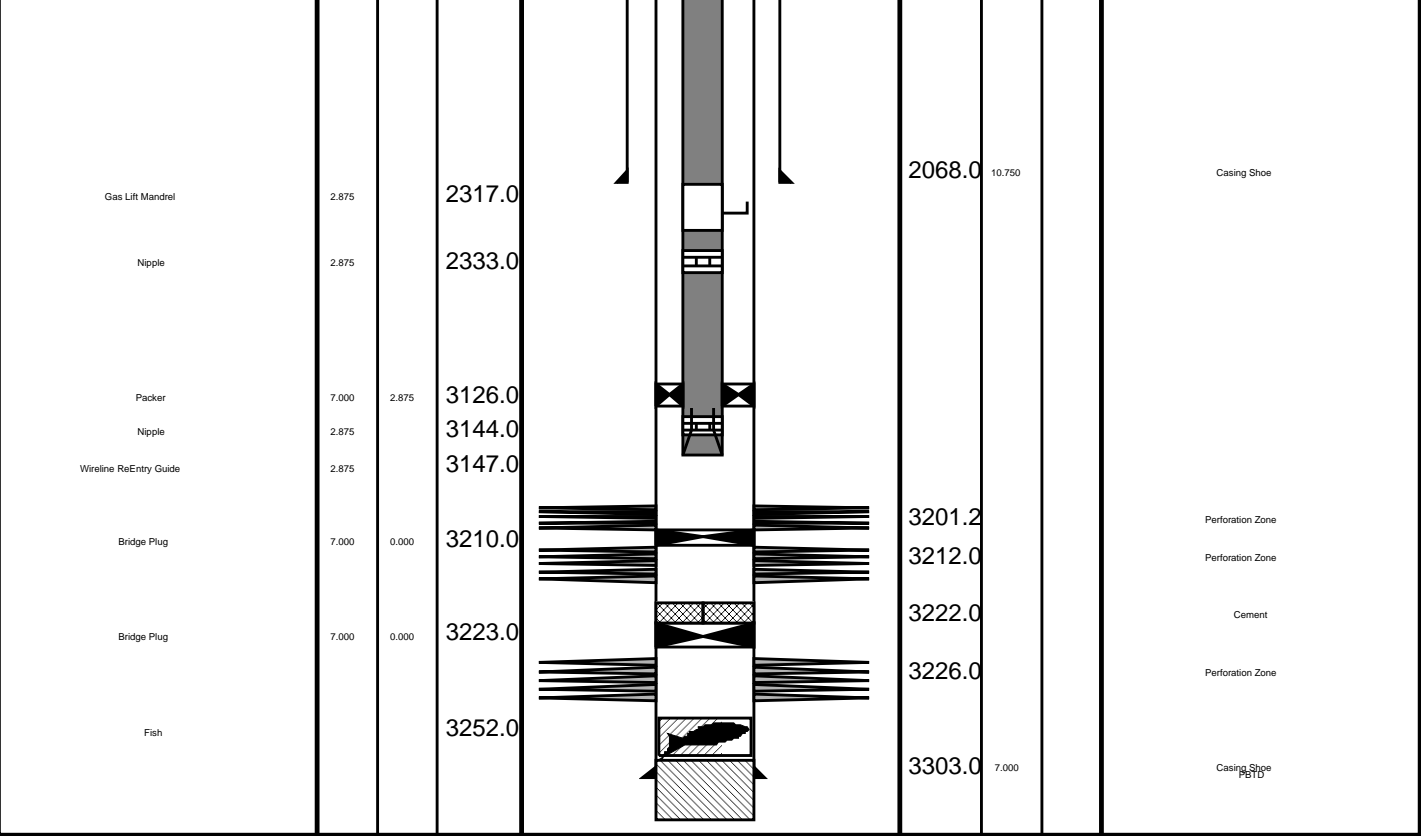
RUN 1					
SERVICE ORDER #:			AUSL08509123		
PROGRAM VERSION:			15C0-309		
FLUID LEVEL:			1235 m		
LOGGED INTERVAL	START	STOP	LOGGED INTERVAL	START	STOP

EQUIPMENT DESCRIPTION

RUN 1			RUN 2		
SURFACE EQUIPMENT					
WITM (SHM) 1					
DOWNHOLE EQUIPMENT					
SWBS-B 787		14.50			
SWBS-B 786		13.82			
SWBS-B 788		13.13			
SWHS-A 759		12.45			
CCL-L 9851	Tension CCL 	TOOL ZERO 12.12			
X-Over 1		11.66			
35' Dump Bailer 1		11.33			



Production String	(in)		(m)	Well Schematic	(m)	(in)		Casing String
	OD	ID	MD		MD	OD	ID	
Tubing Hanger Tubing	7.000	2.875	21.5		21.5	7.000		Casing String Conductor Pipe
	2.875		21.5		22.0	20.000	7.000	
Shutin Valve			431.0		22.0	10.750		Casing String Liner Hanger
	2.875				22.0	20.000	10.750	
Gas Lift Mandrel			699.0		190.0	20.000		Casing Shoe
	2.875							
Gas Lift Mandrel			1656.0					
	2.875							



Job Events Summary

MAXIS Field Log

Schlumberger Job Event Summary

Time	Elapsed Time	Depth (M)	File
Log Pass (up)	8-Jul-2008 21:57	000:10	3200.7 - 3160.0 PERFO_015LUP
Log Pass (up)	9-Jul-2008 0:12	000:09	3200.7 - 3142.5 PERFO_019LUP

Output DLIS Files

DEFAULT PERFO_019LUP FN:18 PRODUCER 09-Jul-2008 00:12 3200.7 M 3142.5 M

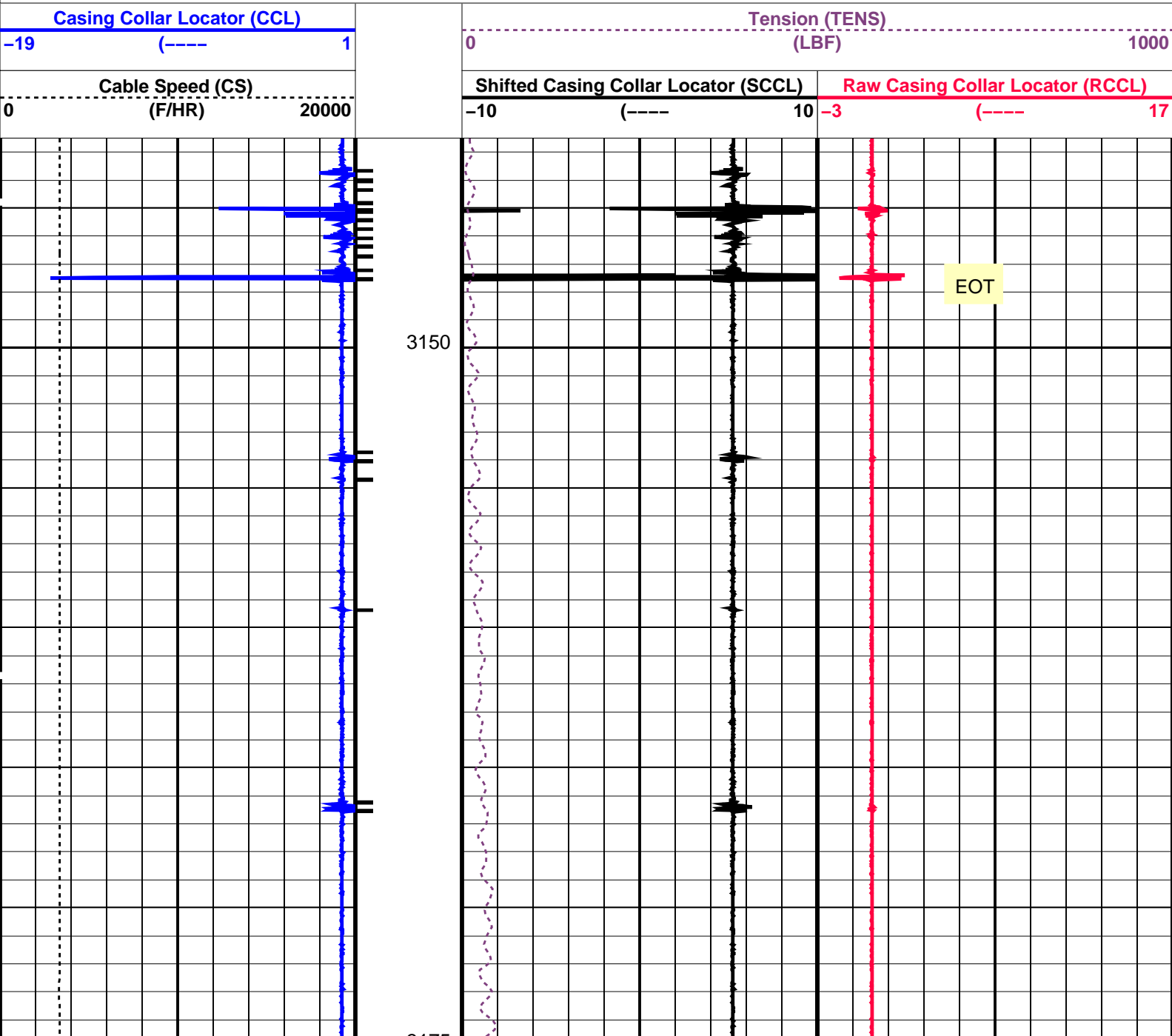
OP System Version: 15C0-309
MCM

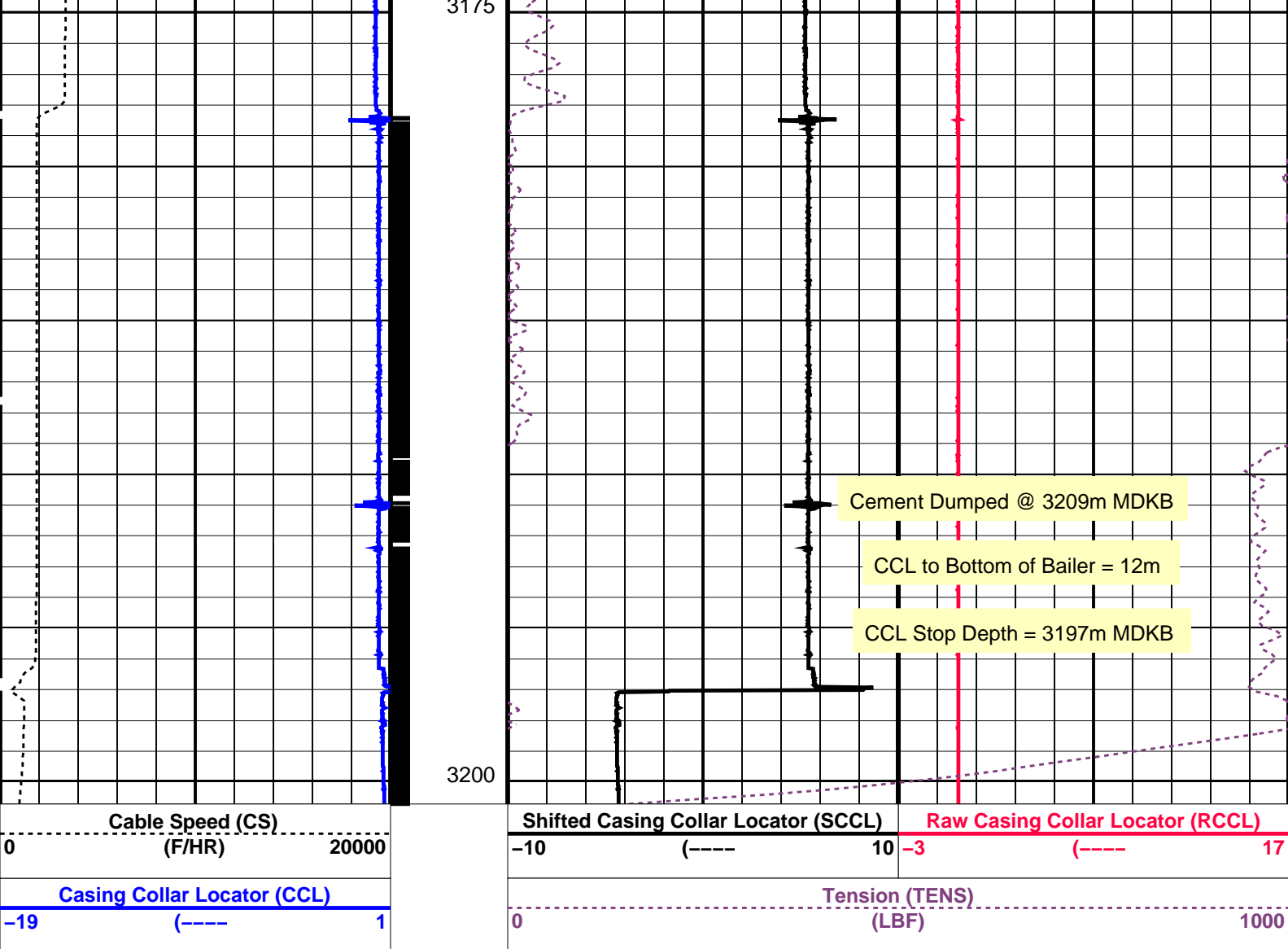
SHM_GUN SRPC-3546-Q1_2008_OP15 CCL-L SRPC-3546-Q1_2008_OP15

PIP SUMMARY

└─ Casing Collars

Time Mark Every 60 S





PIP SUMMARY

Time Mark Every 60 S

Parameters

DLIS Name	Description	Value
CCL-L: Casing Collar Locator		
CCLD	CCL reset delay	12 IN
CCLT	CCL Detection Level	0.3 V

Format: PERFO Vertical Scale: 1:200

Graphics File Created: 09-Jul-2008 00:12

OP System Version: 15C0-309

MCM

SHM_GUN SRPC-3546-Q1_2008_OP15 CCL-L SRPC-3546-Q1_2008_OP15

Output DLIS Files

DEFAULT PERFO_019LUP FN:18 PRODUCER 09-Jul-2008 00:12

Schlumberger

Water Dump Pass

Output DLIS Files

DEFAULT PERFO_015LUP FN:14 PRODUCER 08-Jul-2008 21:57 3200.7 M 3160.0 M

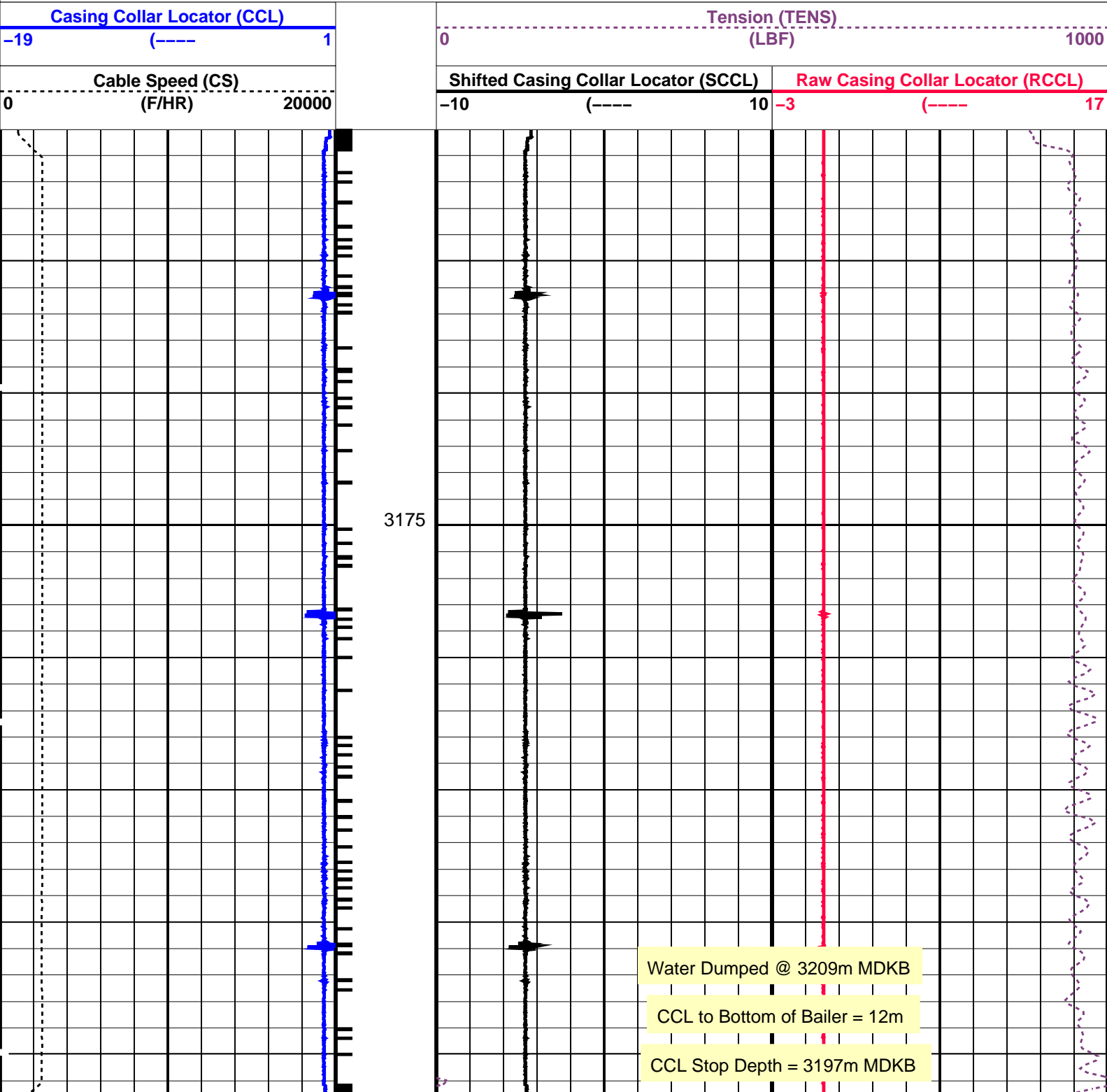
OP System Version: 15C0-309
MCM

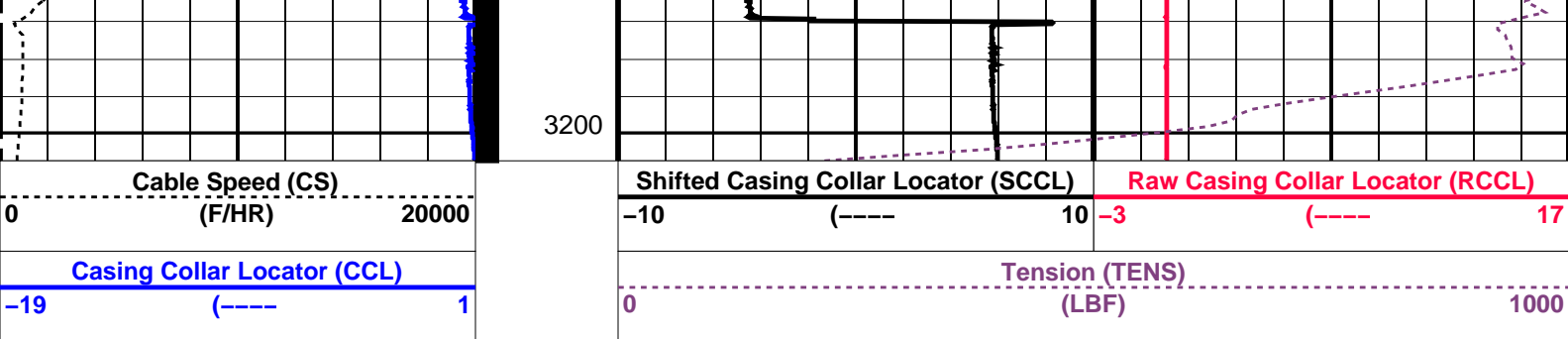
SHM_GUN SRPC-3546-Q1_2008_OP15 CCL-L SRPC-3546-Q1_2008_OP15

PIP SUMMARY

└─ Casing Collars

Time Mark Every 60 S






Time Mark Every 60 S

Parameters		
DLIS Name	Description	Value
CCLD	CCL-L: Casing Collar Locator	12 IN
CCLT	CCL reset delay	0.3 V
	CCL Detection Level	

Format: PERFO Vertical Scale: 1:200 Graphics File Created: 08-Jul-2008 21:57

OP System Version: 15C0-309			
MCM			
SHM_GUN	SRPC-3546-Q1_2008_OP15	CCL-L	SRPC-3546-Q1_2008_OP15

Output DLIS Files			
DEFAULT	PERFO_015LUP	FN:14	PRODUCER 08-Jul-2008 21:57



Dummy Plug Pass
(Completed 14/6/2008)

MAXIS Field Log

Company: Esso Australia Pty Ltd. Well: A-4c

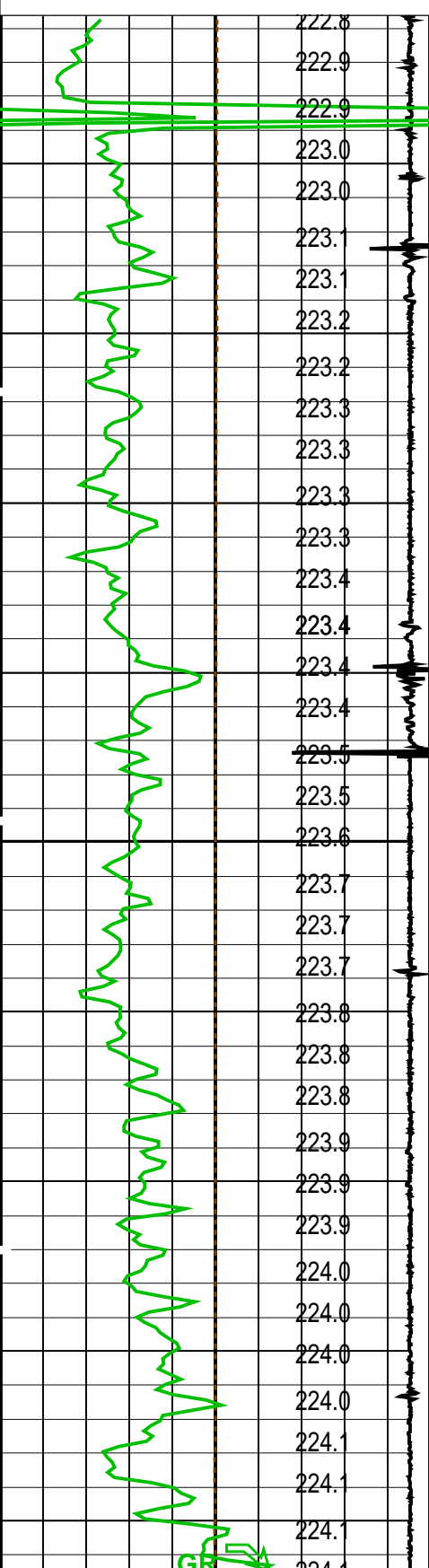
Input DLIS Files					
DEFAULT	PERFO_049LUP	FN:47	PRODUCER	14-Jun-2008 12:44	3226.5 M 3126.5 M
Output DLIS Files					
DEFAULT	PERFO_050PUP	FN:48	PRODUCER	14-Jun-2008 12:53	3225.1 M 3125.6 M

OP System Version: 15C0-309			
MCM			
MWP_GUN	SRPC-3546-Q1_2008_OP15	MWPT-CA	SRPC-3546-Q1_2008_OP15
MWGT-AA	SRPC-3546-Q1_2008_OP15		

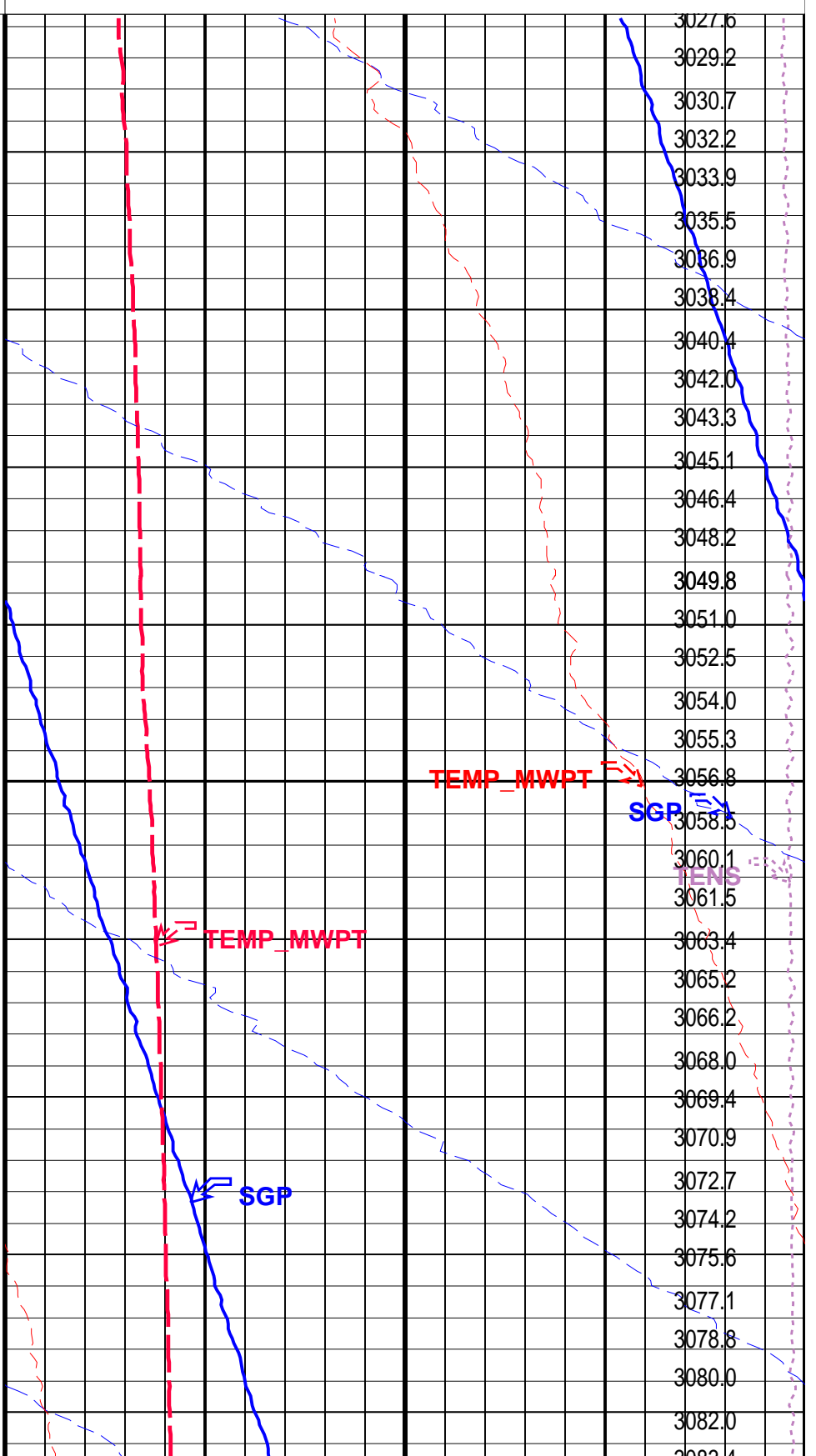
Time Mark Every 60 S



(DEGF)		
CCL From CCL to T1		
Gamma Ray (GR) (GAPI)		
0		150
Casing Collar Locator (CCL) (----		
-19		1
Cable Speed (CS) (F/HR)		
0		5000



Temperature (TEMP_MWPT) (DEGF)		
0		2
Strain Gauge Pressure (SGP) (PSIA)		
0		20
Temperature (TEMP_MWPT) (DEGF)		
200		220
Strain Gauge Pressure (SGP) (PSIA)		
2550		2650



Casing Collar Locator (CCL)		Temperature (TEMP_MWPT) (DEGF)	
-19	(----	200	220
Gamma Ray (GR) (GAPI)		Strain Gauge Pressure (SGP) (PSIA)	
0	150	0	20
CCL From CCL to T1		Temperature (TEMP_MWPT) (DEGF)	
Temperature (TEMP_MWPT) (DEGF)		Tension (TENS) (LBF)	
		0	2000
		Pressure (SGP) (PSIA)	

PIP SUMMARY			
Time Mark Every 60 S			

Parameters			
DLIS Name	Description	Value	
MWPT-CA: MEASUREMENT WHILE PERFORATING TOOL			
DEVI_FL_CORR	Deviation Angle for Flow Line Correction	0	DEG
FLD	Flow Line Density	1	G/C3
MWPT_NULL_SOURCE	MWPT NULL Temperature Source	TEMS	
MWPT_NULL_TEMP	MWPT NULL Temperature	0.0	DEGC
System and Miscellaneous			
DO	Depth Offset for Playback	-1.3	M
PP	Playback Processing	NORMAL	

Format: MWP	Vertical Scale: 1:200	Graphics File Created: 14-Jun-2008 12:53
-------------	-----------------------	------------------------------------------

OP System Version: 15C0-309			
MCM			
MWP_GUN	SRPC-3546-Q1_2008_OP15	MWPT-CA	SRPC-3546-Q1_2008_OP15
MWGT-AA	SRPC-3546-Q1_2008_OP15		

Input DLIS Files					
DEFAULT	PERFO_049LUP	FN:47	PRODUCER	14-Jun-2008 12:44	3226.5 M 3126.5 M
Output DLIS Files					
DEFAULT	PERFO_050PUP	FN:48	PRODUCER	14-Jun-2008 12:53	

Company:	Esso Australia Pty Ltd.	Schlumberger
Well:	A-4c	
Field:	Fortescue	
Rig:	Crane / Prod 4	
Country:	Australia	
2 1/8" Cement Dump Bailer		