



Company: Esso Australia Pty Ltd

Well: FTA-A30A

Field: Fortescue

Rig: Crane/Prod 4

Country: Australia

7" Posiset Plug  
Cement Dump Bailer  
Record

Gippsland	Elev.: K.B. 42.49 m
Basin	G.L. -69 m
Bass Strait	D.F. 42.49 m

Permanent Datum:	M.S.L.	Elev.: 42.49 m
Log Measured From:	D.F.	-42.5 m above Perm. Datum
Drilling Measured From:	D.F.	

State: Victoria	Max. Well Deviation 74 deg	Longitude 148 16'36.62"E	Latitude 38 24'31.39"S
-----------------	----------------------------	--------------------------	------------------------

Logging Date 12-Jul-2008

Run Number 1 thru 4

Depth Driller 4957 m

Schlumberger Depth 4947 m

Bottom Log Interval 4946 m

Top Log Interval 4850 m

Casing Fluid Type Production Fluids

Salinity

Density

Fluid Level 260 m

BIT/CASING/TUBING STRING

Bit Size 8.500 in

From

To

Casing/Tubing Size 7.000 in

Weight 26 lbm/ft

Grade L-80

From 20.46 m

To 5074.7 m

Maximum Recorded Temperatures 103 degC

Logger On Bottom 12-Jul-2008

Unit Number 889

Recorded By G Wright, M Pratt.

Witnessed By G Rimmer, JD.

Run 1

PVT DATA

Oil Density	
Water Salinity	
Gas Gravity	
Bo	
Bw	
1/Bg	
Bubble Point Pressure	
Bubble Point Temperature	
Solution GOR	
Maximum Deviation	74 deg

CEMENTING DATA

Primary/Squeeze	Primary
Casing String No	
Lead Cement Type	
Volume	
Density	
Water Loss	
Additives	
Tail Cement Type	
Volume	
Density	
Water Loss	
Additives	

Expected Cement Top

Logging Date

Run Number

Depth Driller

Schlumberger Depth

Bottom Log Interval

Top Log Interval

Casing Fluid Type

Salinity

Density

Fluid Level

BIT/CASING/TUBING STRING

Bit Size

From

To

Casing/Tubing Size

Weight

Grade

From

To

Maximum Recorded Temperatures

Logger On Bottom

Unit Number

Recorded By

Witnessed By

## DEPTH SUMMARY LISTING

Date Created: 13-JUL-2008 7:14:25

### Depth System Equipment

Depth Measuring Device	Tension Device	Logging Cable
Type: IDW-BE Serial Number: 6373 Calibration Date: 04-Jan-2007 Calibrator Serial Number: 9 Calibration Cable Type: 2-32ZT Wheel Correction 1: -2 Wheel Correction 2: -4	Type: PSDS/OSDS Serial Number: 325357 Calibration Date: 12-Jul-2008 Calibrator Serial Number: 1174 Calibration Gain: 0.97 Calibration Offset: -128.00	Type: 2-32ZT Serial Number: 208196 Length: 7000.04 M Conveyance Method: Wireline Rig Type: Rigless

### Depth Control Parameters

Log Sequence:	Subsequent Log In the Well
---------------	----------------------------

### Depth Control Remarks

1. IDW-BE 6373 used as primary depth control. 2. Z-Chart used as back-up. 3. 4. 5. 6.
--

#### DISCLAIMER

THE USE OF AND RELIANCE UPON THIS RECORDED-DATA BY THE HEREIN NAMED COMPANY (AND ANY OF ITS AFFILIATES, PARTNERS, REPRESENTATIVES, AGENTS, CONSULTANTS AND EMPLOYEES) IS SUBJECT TO THE TERMS AND CONDITIONS AGREED UPON BETWEEN SCHLUMBERGER AND THE COMPANY, INCLUDING: (a) RESTRICTIONS ON USE OF THE RECORDED-DATA; (b) DISCLAIMERS AND WAIVERS OF WARRANTIES AND REPRESENTATIONS REGARDING COMPANY'S USE OF AND RELIANCE UPON THE RECORDED-DATA; AND (c) CUSTOMER'S FULL AND SOLE RESPONSIBILITY FOR ANY INFERENCE DRAWN OR DECISION MADE IN CONNECTION WITH THE USE OF THIS RECORDED-DATA.

OTHER SERVICES1 OS1: None
------------------------------

REMARKS: RUN NUMBER 1
Log correlated to Solar composite log provided by client.
Objective: Set a 7" Posiset Plug using MPBT, with top of seal surface at 4945.5m
Dump approximately 1m of cement on top of seal.
Maximum deviation 74 deg @ 3555.31m MDKB.
Plug # 1
Top of seal: 4945.5m MDKB.
CCI to Top of seal: 6.8m



AH-2.125" Dummy Plug

2.70

Tension HV  
TOOL ZERO 0.00

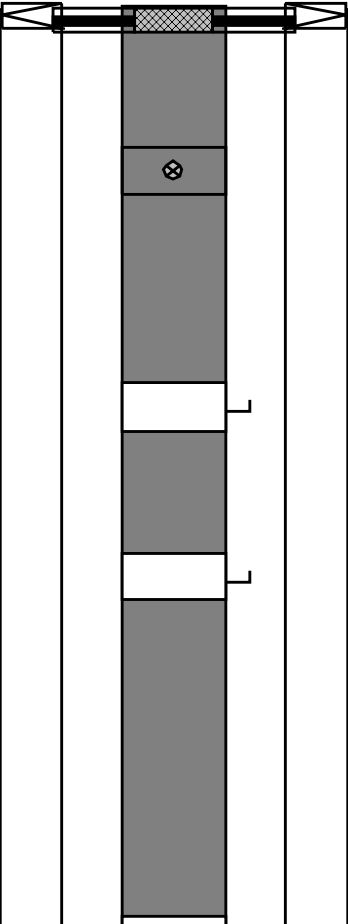
MAXIMUM STRING DIAMETER 2.13 IN  
MEASUREMENTS RELATIVE TO TOOL ZERO  
ALL LENGTHS IN METERS

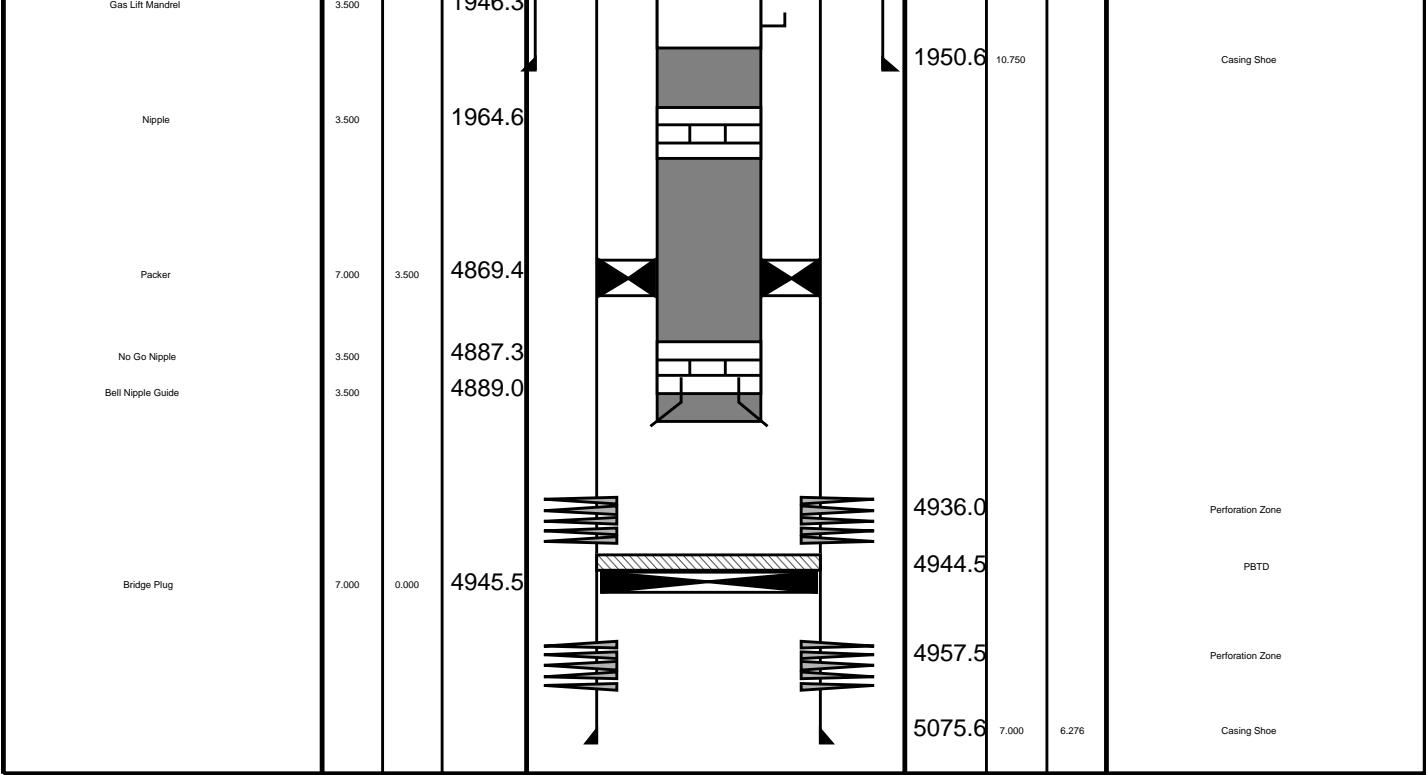
AH-EEHB 1

SHM\_GUN

TOOL BOTTOM 0.00

MAXIMUM STRING DIAMETER 2.13 IN  
MEASUREMENTS RELATIVE TO TOOL ZERO  
ALL LENGTHS IN METERS

Production String	(in)		(m)	Well Schematic	(m)	(in)		Casing String
	OD	ID	MD		MD	OD	ID	
Tubing	3.500	2.992	20.3		20.5	10.750	6.276	Casing String
Tubing Hanger	10.750	3.500	19.0			7.000	7.000	Liner Hanger
SSSV	3.500		452.2					
Gas Lift Mandrel	3.500		705.5					
Gas Lift Mandrel	3.500		1474.3					
			1946.3					



## Job Event Summary

MAXIS Field Log

### Schlumberger Job Event Summary

Time	Elapsed Time	Depth (M)	File
Log Pass (down)	12-Jul-2008 3:27 000:22	633.8 – 2048.3	PSP_019LDP
Log Pass (up)	12-Jul-2008 3:48 000:03	2039.1 – 2018.4	PSP_020LUP
Log Pass (down)	12-Jul-2008 3:53 000:03	1996.4 – 2050.2	PSP_021LDP
Log Pass (up)	12-Jul-2008 3:57 000:03	2050.2 – 2021.9	PSP_022LUP
Log Pass (down)	12-Jul-2008 6:25 000:05	4.6 – 105.9	PSP_028LDP
Log Pass (down)	12-Jul-2008 6:30 001:11	112.2 – 4954.5	PSP_029LDP
Log Pass (up)	12-Jul-2008 7:41 000:20	4959.1 – 4830.2	PSP_030LUP
Log Pass (down)	12-Jul-2008 8:19 000:11	4821.3 – 4954.1	PSP_033LDP
Log Pass (up)	12-Jul-2008 9:06 000:15	4953.9 – 4818.6	PSP_036LUP
Log Pass (up)	12-Jul-2008 11:42 000:30	12192.0 – 12191.7	CCL_039LUP
Log Pass (down)	12-Jul-2008 12:34 001:05	24.2 – 4857.4	CCL_041LDP
Log Pass (down)	12-Jul-2008 13:41 000:08	4835.7 – 4938.7	CCL_042LDP
Simulated Log	12-Jul-2008 13:49 000:26		CCL_043LUP
Log Pass (up)	12-Jul-2008 14:19 000:05	4938.1 – 4840.2	CCL_044LUP
Log Pass (up)	12-Jul-2008 14:38 000:08	3664.6 – 3216.9	CCL_047LUP
Log Pass (up)	12-Jul-2008 14:45 000:39	2877.6 – -7.4	CCL_048LUP
Log Pass (down)	12-Jul-2008 17:08 000:51	87.2 – 1031.0	PSP_051LDP

Log Pass (down) 12-Jul-2008 17:08 000:51 87.2 - 4931.9 PERFO\_051LUP  
Log Pass (up) 12-Jul-2008 17:59 000:05 4931.8 - 4865.2 PERFO\_052LUP  
Log Pass (up) 12-Jul-2008 18:09 001:28 4816.1 - -14.9 PERFO\_053LUP  
Log Pass (down) 12-Jul-2008 20:07 000:39 10.8 - 2452.7 PERFO\_055LDP  
Log Pass (up) 12-Jul-2008 20:46 000:02 2443.6 - 2376.5 PERFO\_056LUP  
Log Pass (down) 12-Jul-2008 20:48 000:36 2370.9 - 4943.7 PERFO\_057LDP  
Log Pass (up) 12-Jul-2008 21:24 000:05 4943.7 - 4914.4 PERFO\_058LUP  
Log Pass (up) 12-Jul-2008 21:31 000:02 4937.9 - 4928.5 PERFO\_059LUP  
Log Pass (up) 12-Jul-2008 21:33 000:09 4931.8 - 4861.7 PERFO\_060LUP  
Log Pass (up) 12-Jul-2008 21:43 001:40 4825.1 - -10.7 PERFO\_061LUP

Schlumberger

## Cement Dump Pass

MAXIS Field Log

### Input DLIS Files

DEFAULT	PERFO_060LUP	FN:57	PRODUCER	12-Jul-2008 21:33	4931.8 M	4861.7 M
---------	--------------	-------	----------	-------------------	----------	----------

### Output DLIS Files

DEFAULT	PERFO_066PUP	FN:63	PRODUCER	13-Jul-2008 01:13	4936.2 M	4866.6 M
---------	--------------	-------	----------	-------------------	----------	----------

### OP System Version: 15C0-309

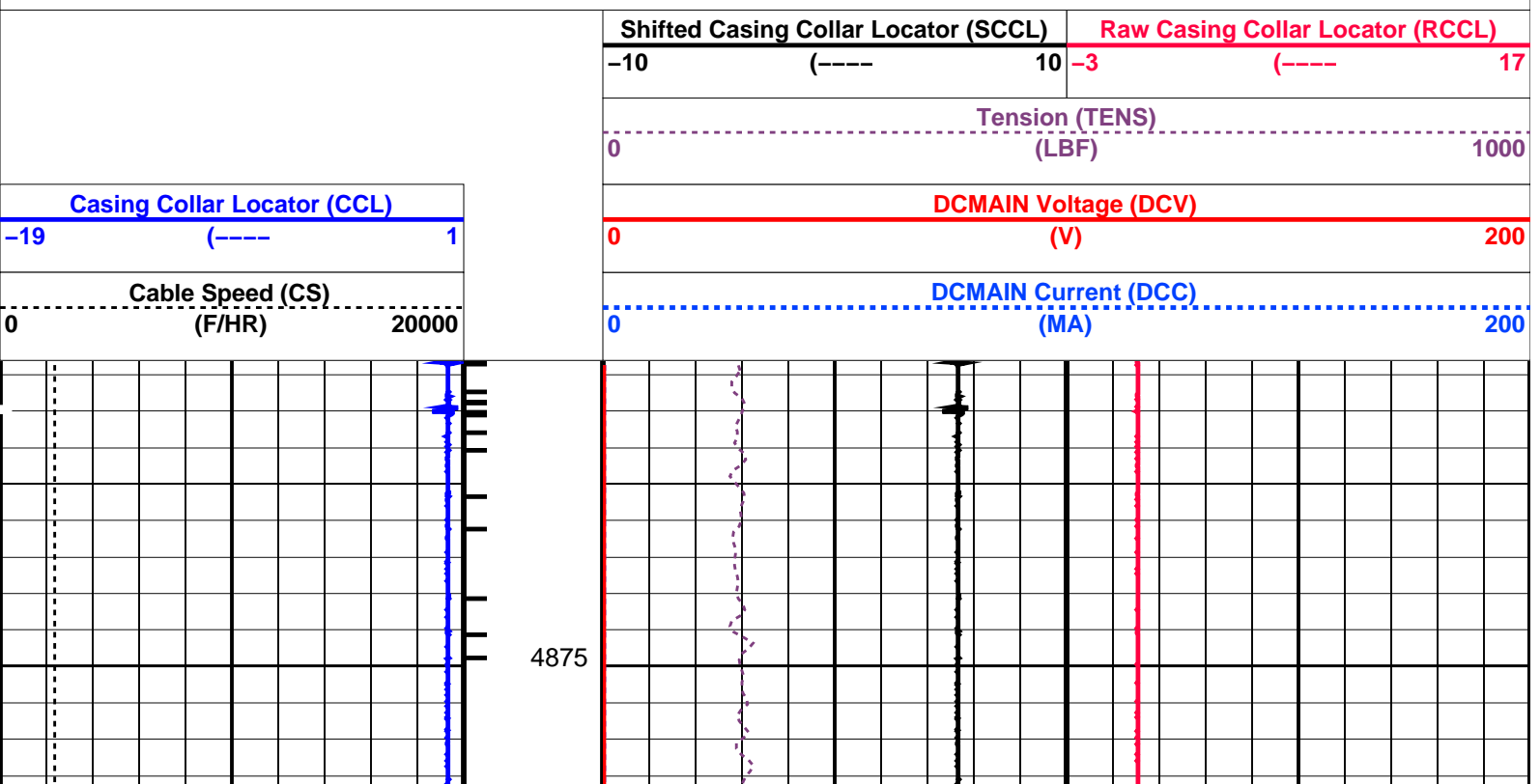
MCM

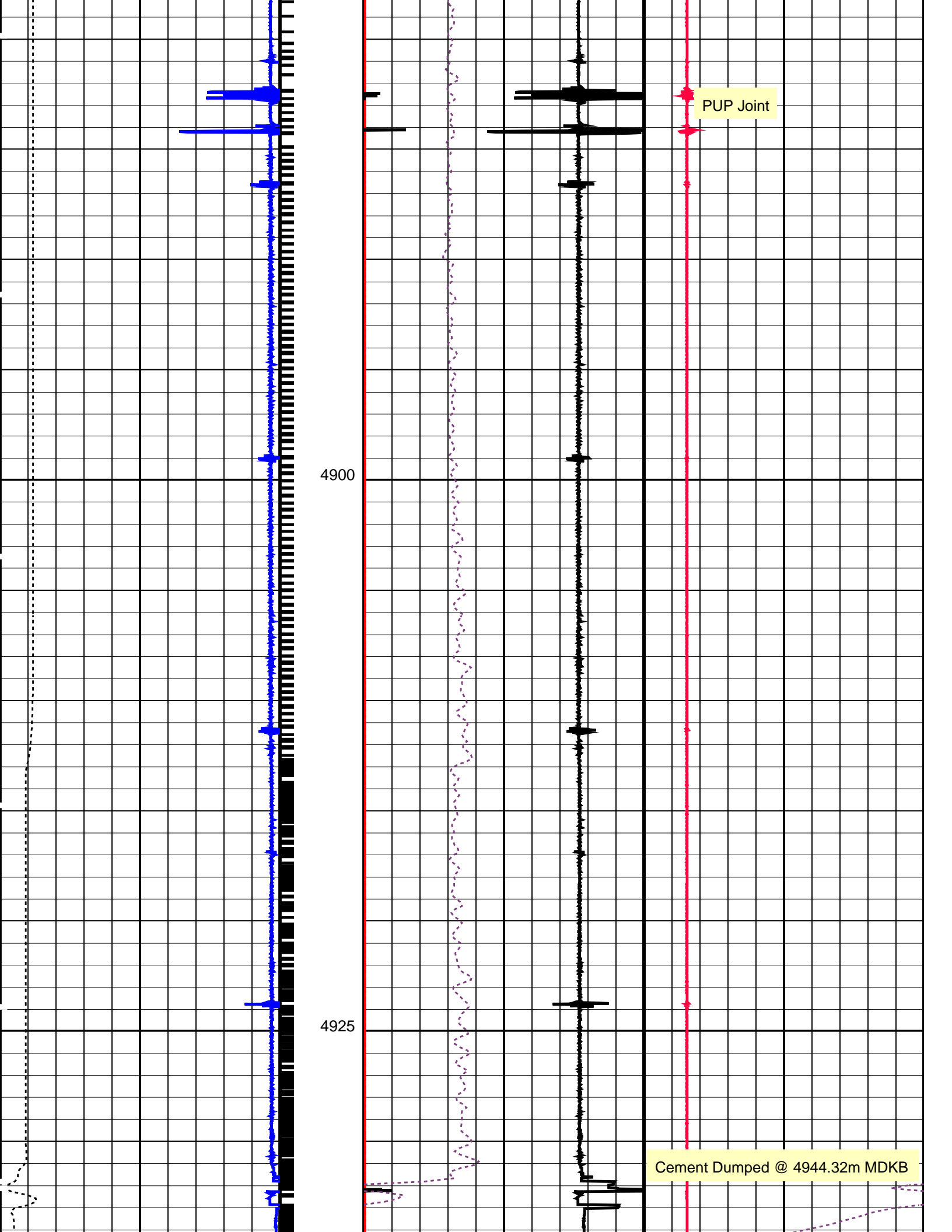
SHM_GUN	SRPC-3546-Q1_2008_OP15	CCL-L	SRPC-3546-Q1_2008_OP15
---------	------------------------	-------	------------------------

### PIP SUMMARY

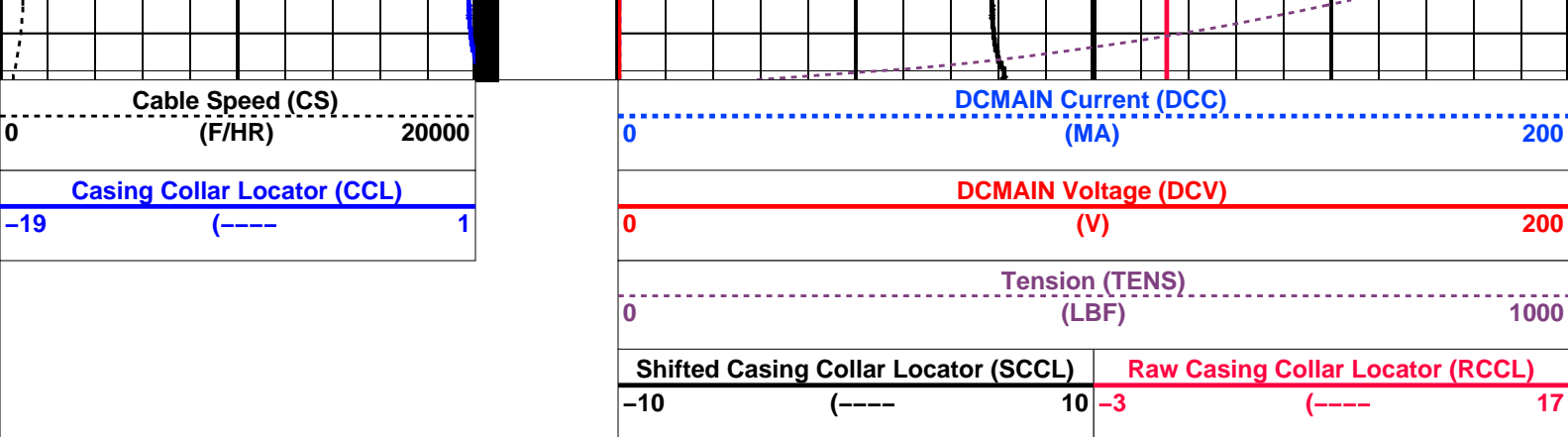
└─ Casing Collars

Time Mark Every 60 S









PIP SUMMARY

Time Mark Every 60 S

Casing Collars

Parameters			
DLIS Name	Description	Value	
CCLD	CCL-L: Casing Collar Locator	12	IN
CCLT	CCL reset delay	0.3	V
	CCL Detection Level		
	System and Miscellaneous		
DO	Depth Offset for Playback	4.4	M
PP	Playback Processing	NORMAL	

Format: PERFO

Vertical Scale: 1:200

Graphics File Created: 13-Jul-2008 01:13

OP System Version: 15C0-309

MCM

SHM\_GUN

SRPC-3546-Q1\_2008\_OP15

CCL-L

SRPC-3546-Q1\_2008\_OP15

Input DLIS Files					
DEFAULT	PERFO_060LUP	FN:57	PRODUCER	12-Jul-2008 21:33	4931.8 M 4861.7 M
Output DLIS Files					
DEFAULT	PERFO_066PUP	FN:63	PRODUCER	13-Jul-2008 01:13	

Schlumberger

Water Dump Pass

MAXIS Field Log

Input DLIS Files					
DEFAULT	PERFO_052LUP	FN:49	PRODUCER	12-Jul-2008 17:59	4931.8 M 4865.2 M
Output DLIS Files					
DEFAULT	PERFO_064PUP	FN:61	PRODUCER	13-Jul-2008 00:50	4941.6 M 4875.4 M

OP System Version: 15C0-309

MCM

SHM\_GUN

SRPC-3546-Q1\_2008\_OP15

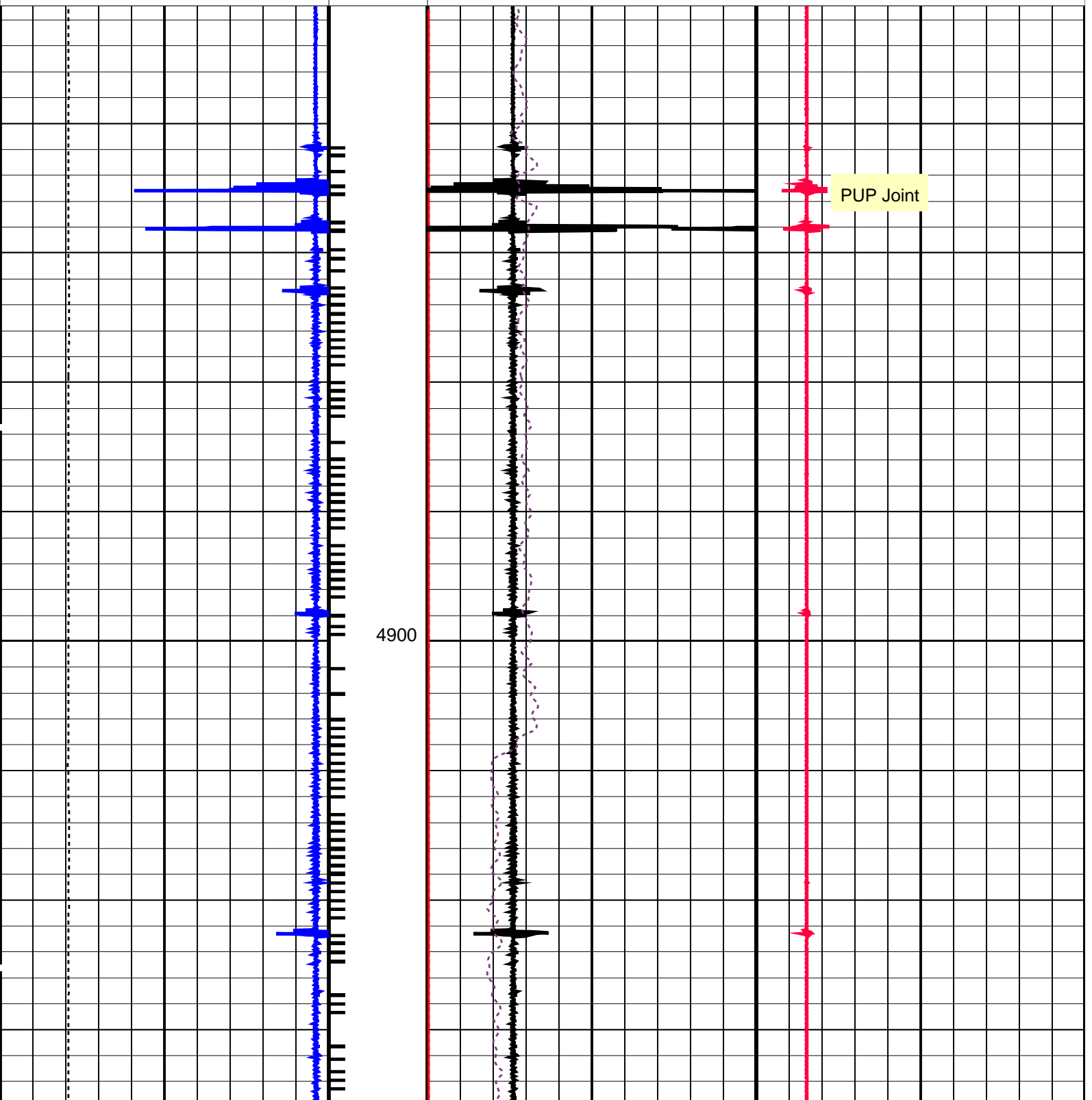
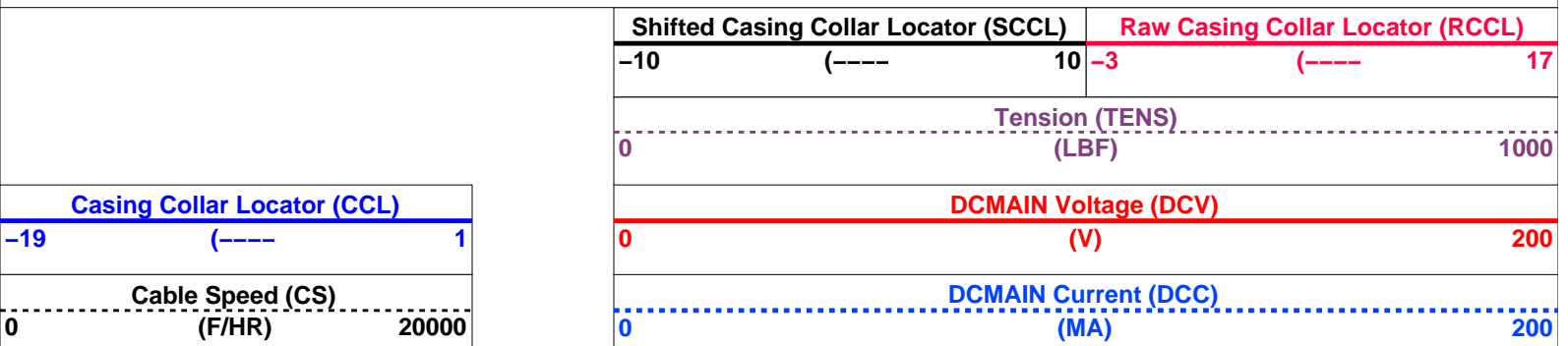
CCL-L

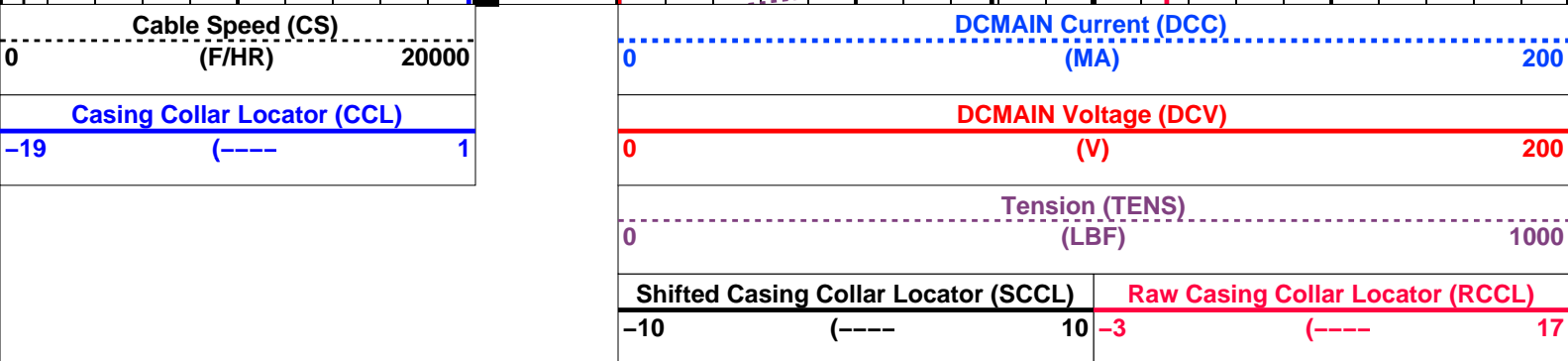
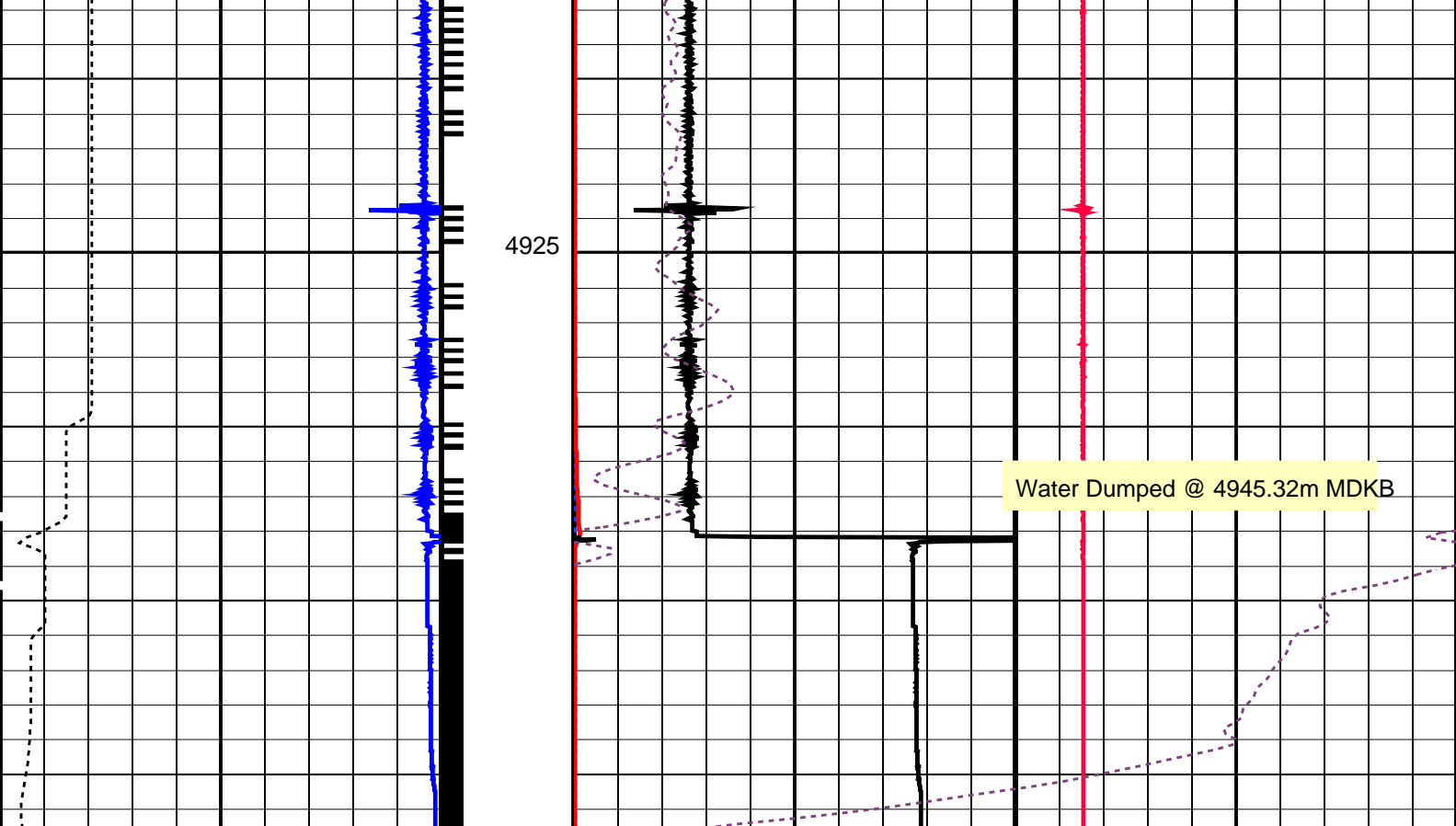
SRPC-3546-Q1\_2008\_OP15

## PIP SUMMARY

Casing Collars

Time Mark Every 60 S





PIP SUMMARY

Time Mark Every 60 S

Casing Collars

Parameters			
DLIS Name	Description	Value	
CCLD CCLT	CCL-L: Casing Collar Locator		
	CCL reset delay	12	IN
	CCL Detection Level	0.3	V
System and Miscellaneous			
DO	Depth Offset for Playback	9.7	M
PP	Playback Processing	NORMAL	

Format: PERFO

Vertical Scale: 1:200

Graphics File Created: 13-Jul-2008 00:50

OP System Version: 15C0-309

MCM

SHM\_GUN

SRPC-3546-Q1\_2008\_OP15

CCL-L

SRPC-3546-Q1\_2008\_OP15

Input DLIS Files					
DEFAULT	PERFO_052LUP	FN:49	PRODUCER	12-Jul-2008 17:59	4931.8 M 4865.2 M
Output DLIS Files					
DEFAULT	PERFO_064PUP	FN:61	PRODUCER	13-Jul-2008 00:50	



Log Down to Set  
7

MAXIS Field Log

Output DLIS Files

DEFAULT CCL\_043LUP FN:41 PRODUCER 12-Jul-2008 13:49

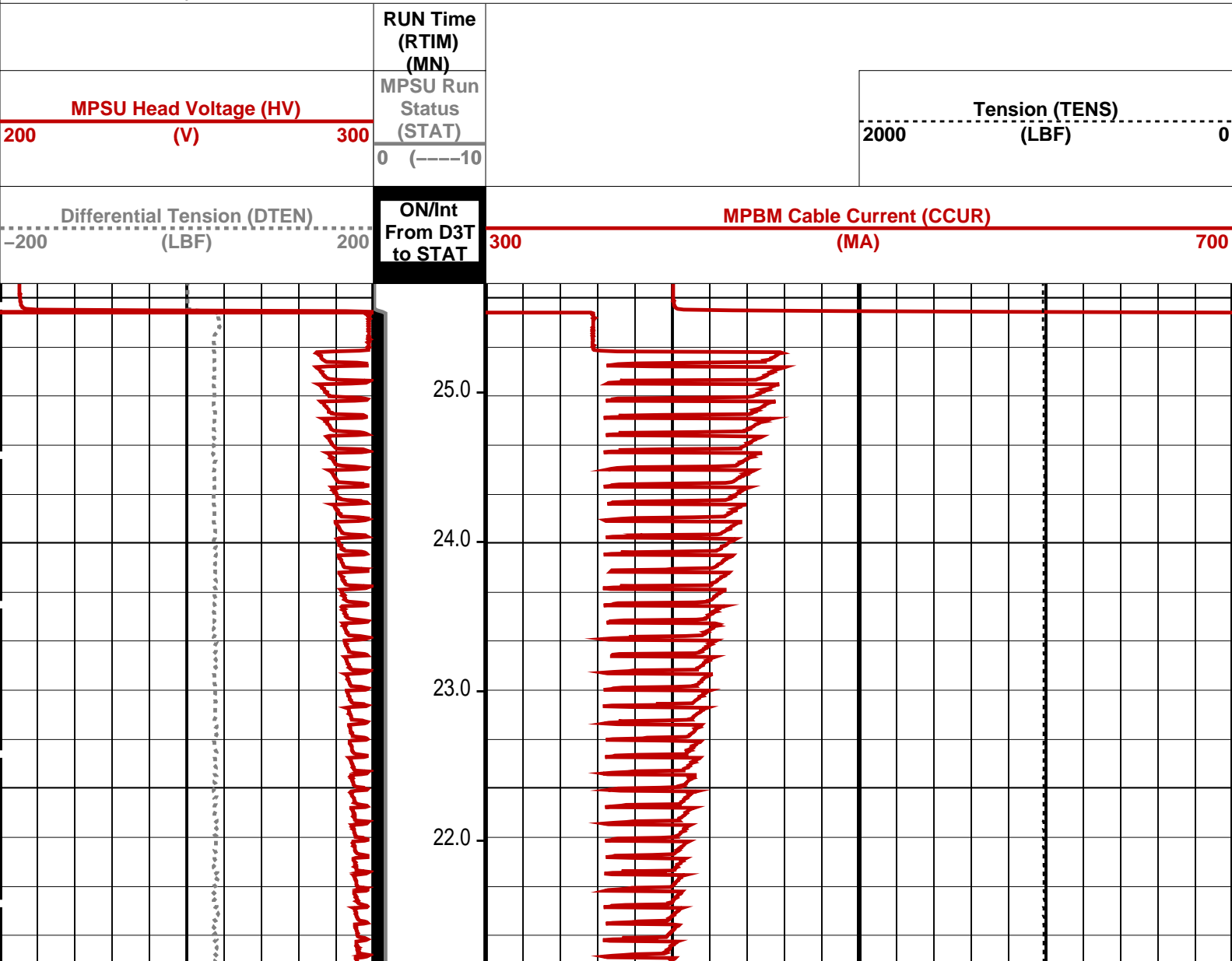
OP System Version: 15C0-309  
MCM

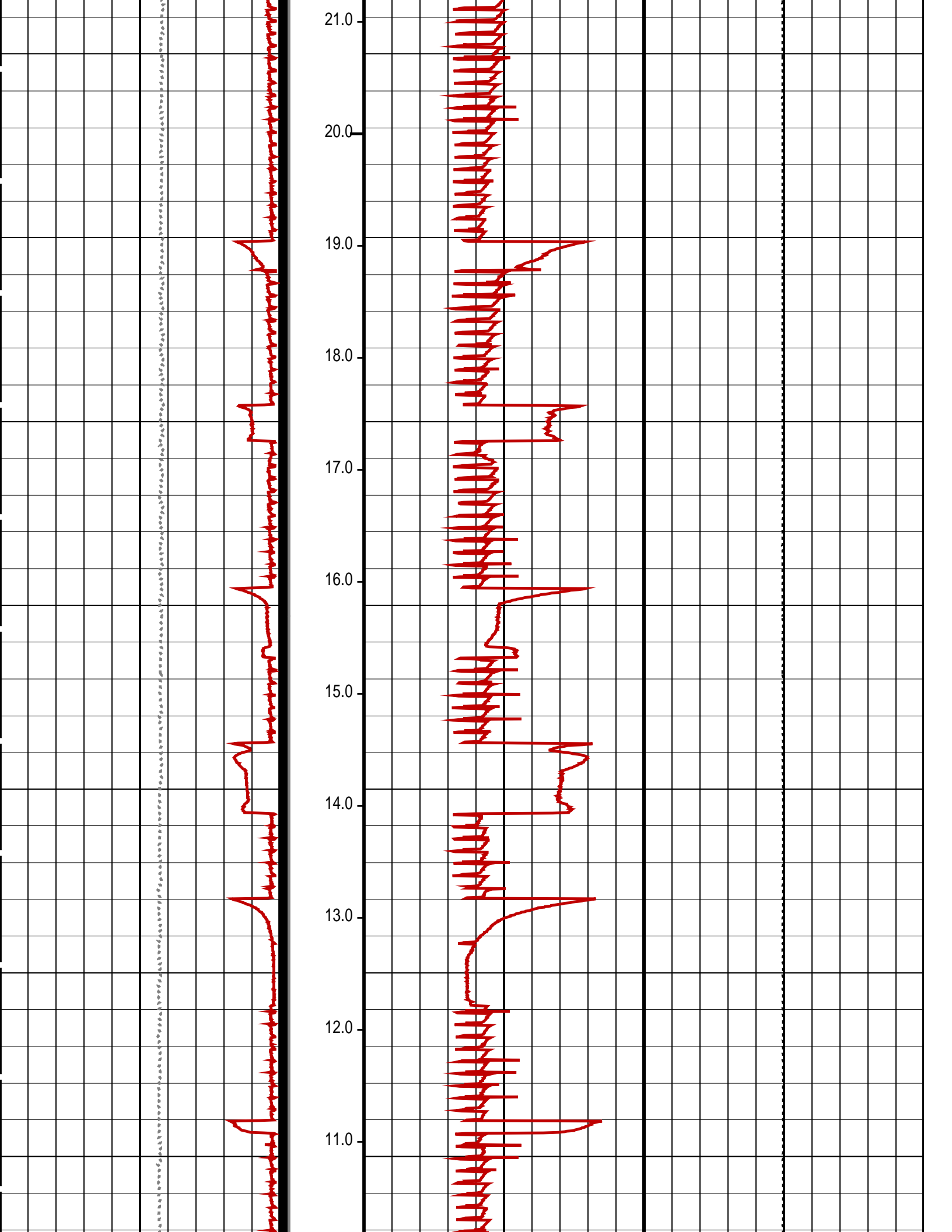
MPEX-EA\_L SRPC-3546-Q1\_2008\_OP15 MPSU-BA SRPC-3546-Q1\_2008\_OP15  
CCL-L SRPC-3546-Q1\_2008\_OP15

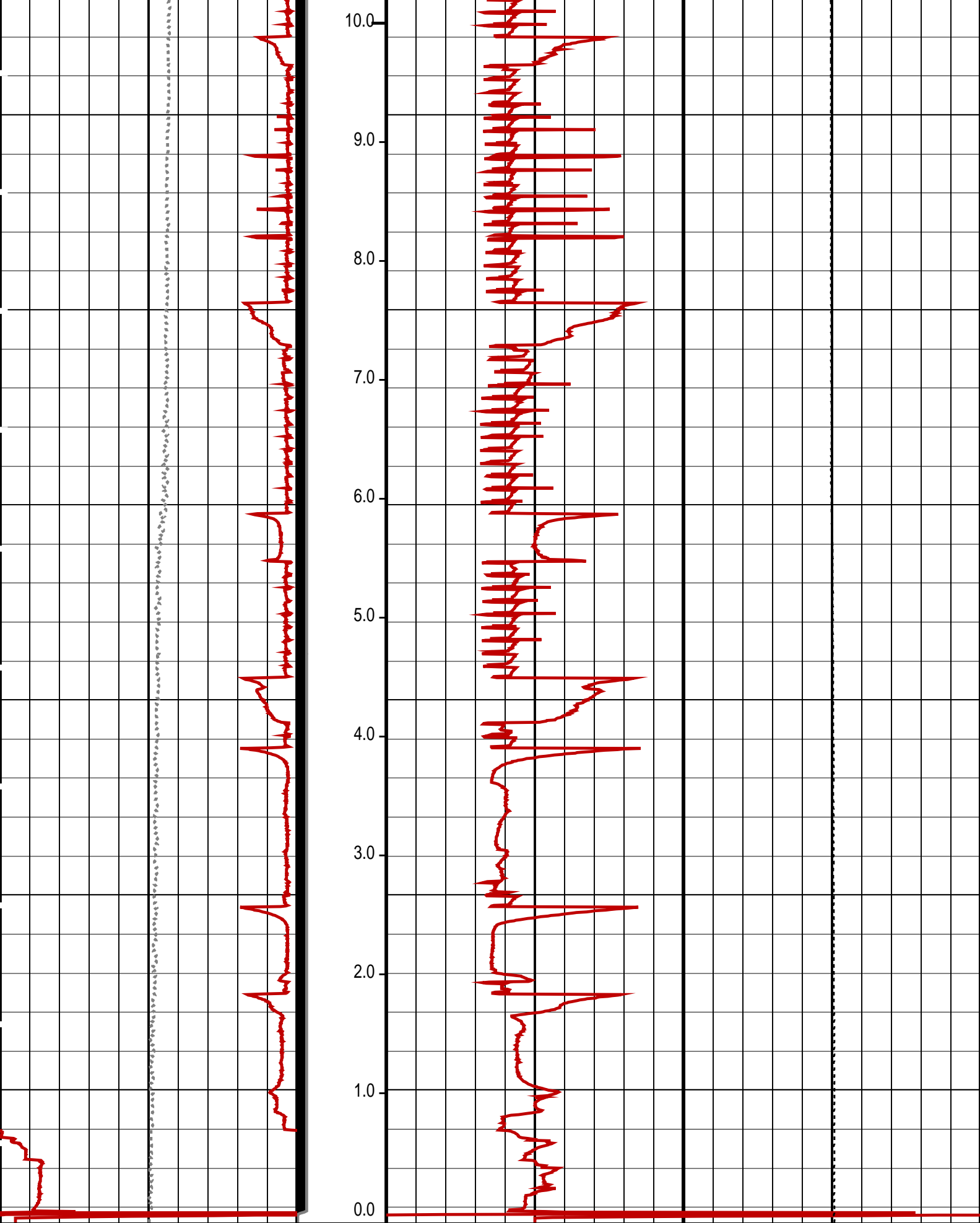
PIP SUMMARY

- MPSU Run Time Every 1 MN
- MPSU Run Time Every 10 MN

Time Mark Every 60 S







MPSU Head Voltage (HV)			MPSU Run Status (STAT)	Tension (TENS)		
200	(V)	300	0 (----10	2000	(LBF)	0
			RUN Time (RTIM) (MN)			

## PIP SUMMARY

- MPSU Run Time Every 1 MN
- MPSU Run Time Every 10 MN

**Time Mark Every 60 S**

## Parameters

DLIS Name	Description	Value
IPUMP	MPSU-BA: MECHANICAL PLUGBACK SETTING UNIT Intensifier Pump	TRUE

Format: MPBT      Vertical Scale: 1:600      Graphics File Created: 12-Jul-2008 13:49

**OP System Version: 15C0-309**

## MCM

MPEX-EA_L	SRPC-3546-Q1_2008_OP15	MPSU-BA	SRPC-3546-Q1_2008_OP15
CCL-L	SRPC-3546-Q1_2008_OP15		

## Output DLIS Files

DEFAULT	CCL 043LUP	FN:41	PRODUCER	12-Jul-2008 13:49
---------	------------	-------	----------	-------------------



## Log Down to Set 7" Posiset Plug

MAXIS Field Log

## Input DLIS Files

DEFAULT	Flip CCL 045LUP	PRODUCER	12-Jul-2008 14:30	4938.7 M	4835.7 M
---------	-----------------	----------	-------------------	----------	----------

## Output DLIS Files

DEFAULT	CCL 046PUP	FN:43	PRODUCER	12-Jul-2008 14:31	4938.7 M	4836.1 M
---------	------------	-------	----------	-------------------	----------	----------

**OP System Version: 15C0-309**

## MCM

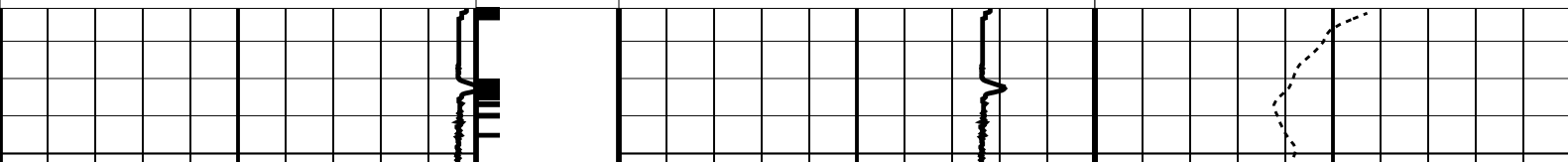
MPEX-EA_L	SRPC-3546-Q1_2008_OP15	MPSU-BA	SRPC-3546-Q1_2008_OP15
CCL-L	SRPC-3546-Q1_2008_OP15		

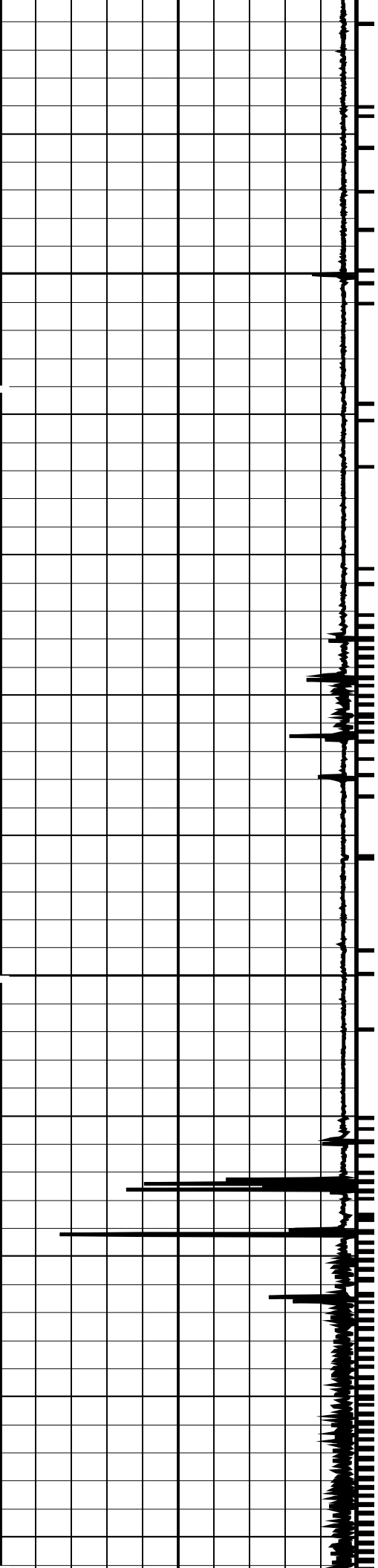
## PIP SUMMARY

## └─ Casing Collars

**Time Mark Every 60 S**

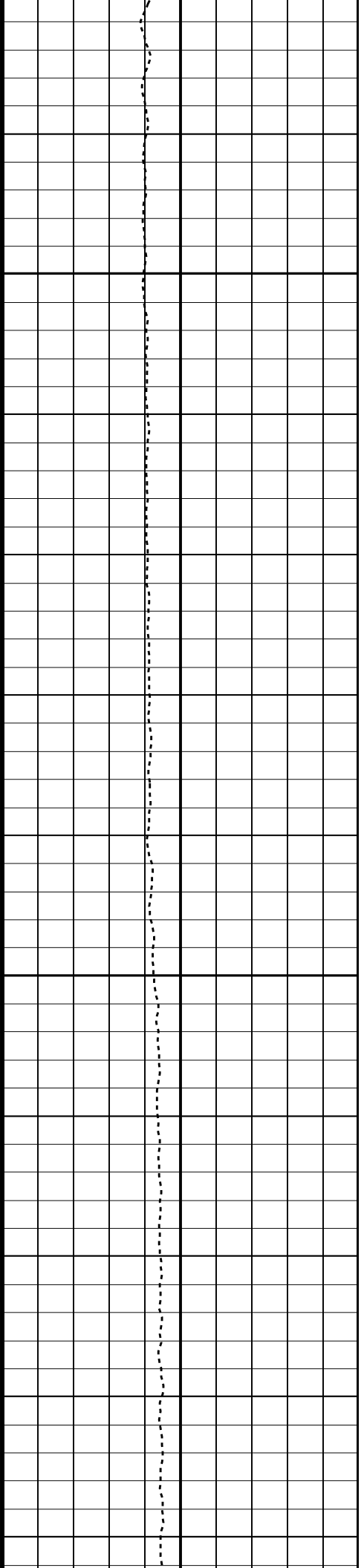
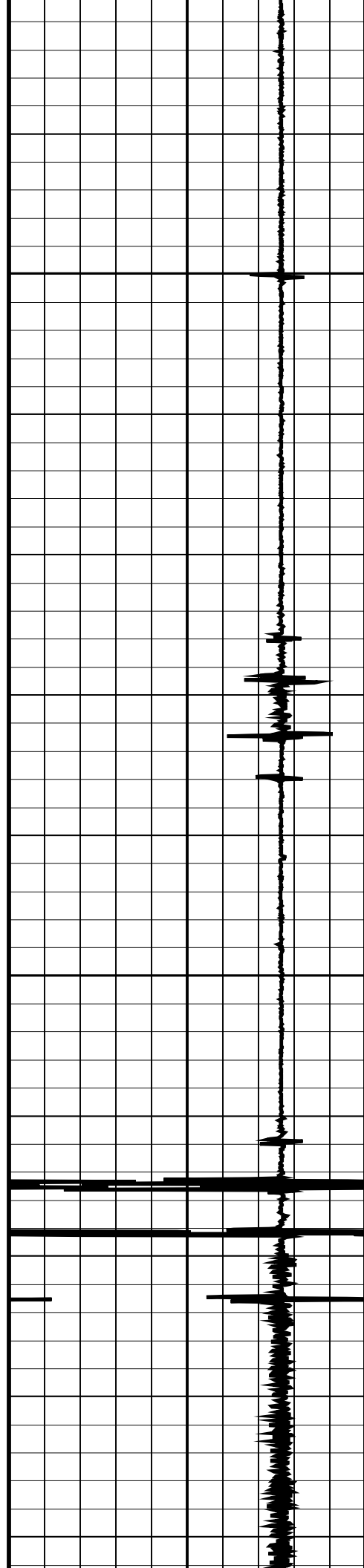
Casing Collar Locator (CCL)			Shifted Casing Collar Locator (SCCL)			Tension (TENS)		
-19	(----	1	-10	(----	10	0	(LBF)	2000



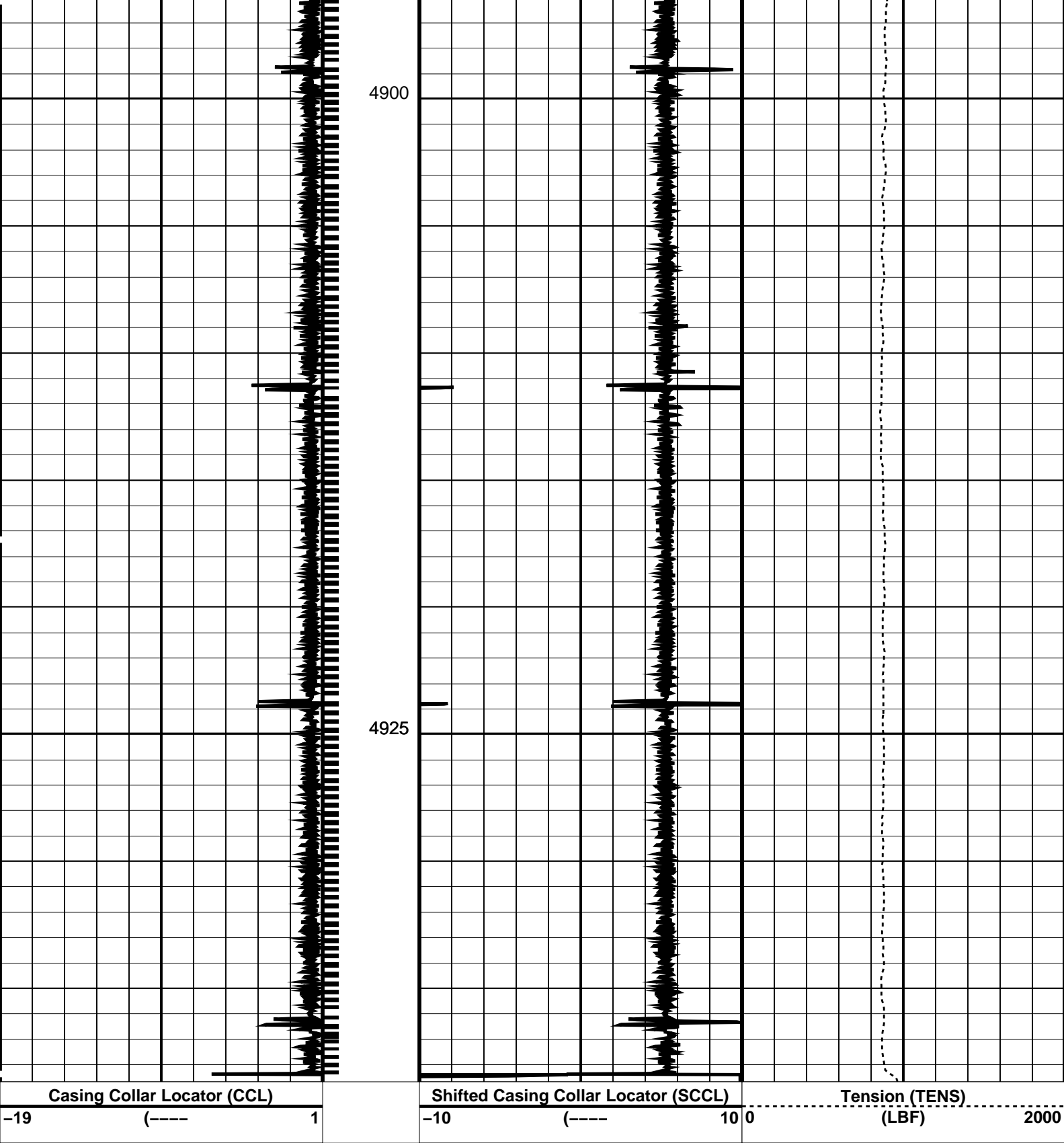


4850

4875







PIP SUMMARY

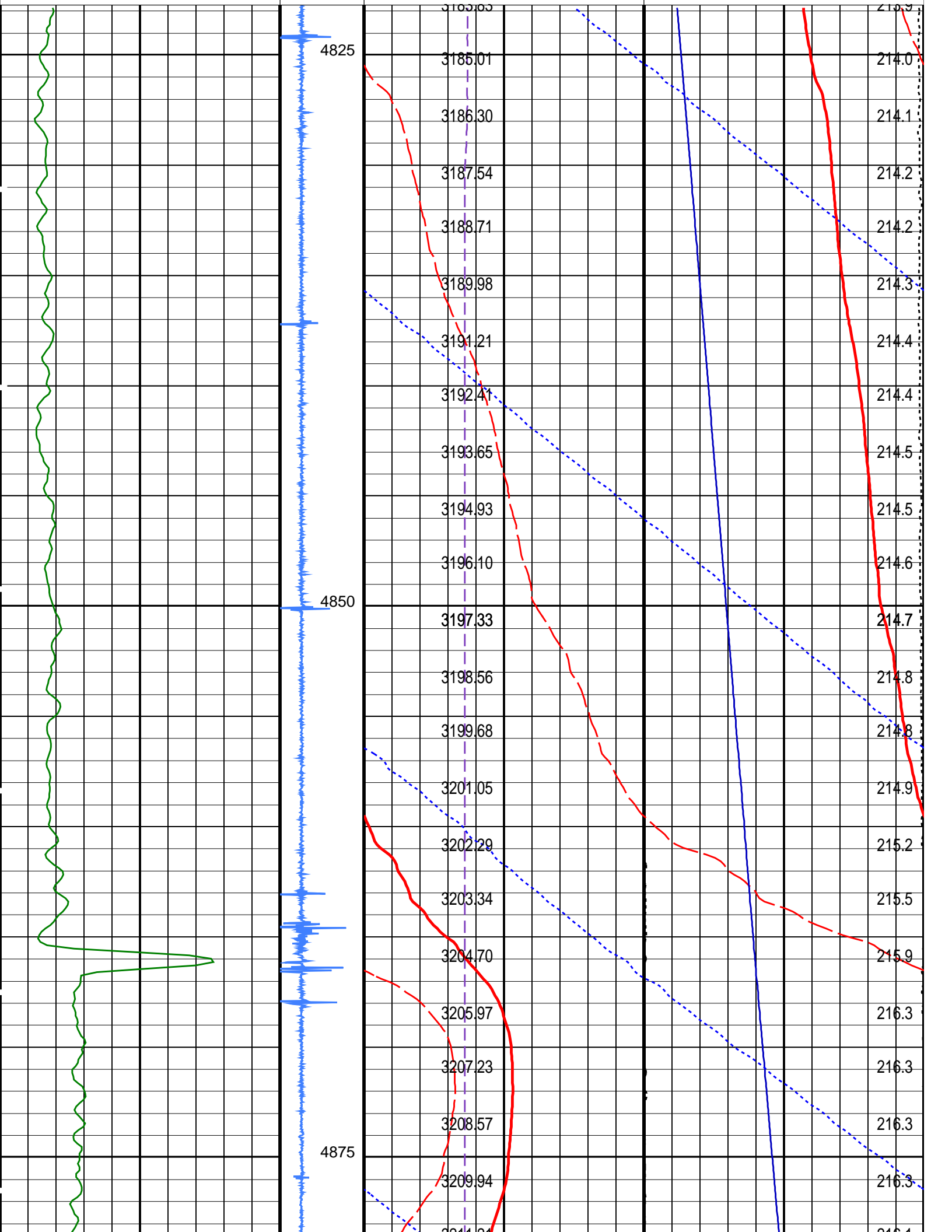
Time Mark Every 60 S

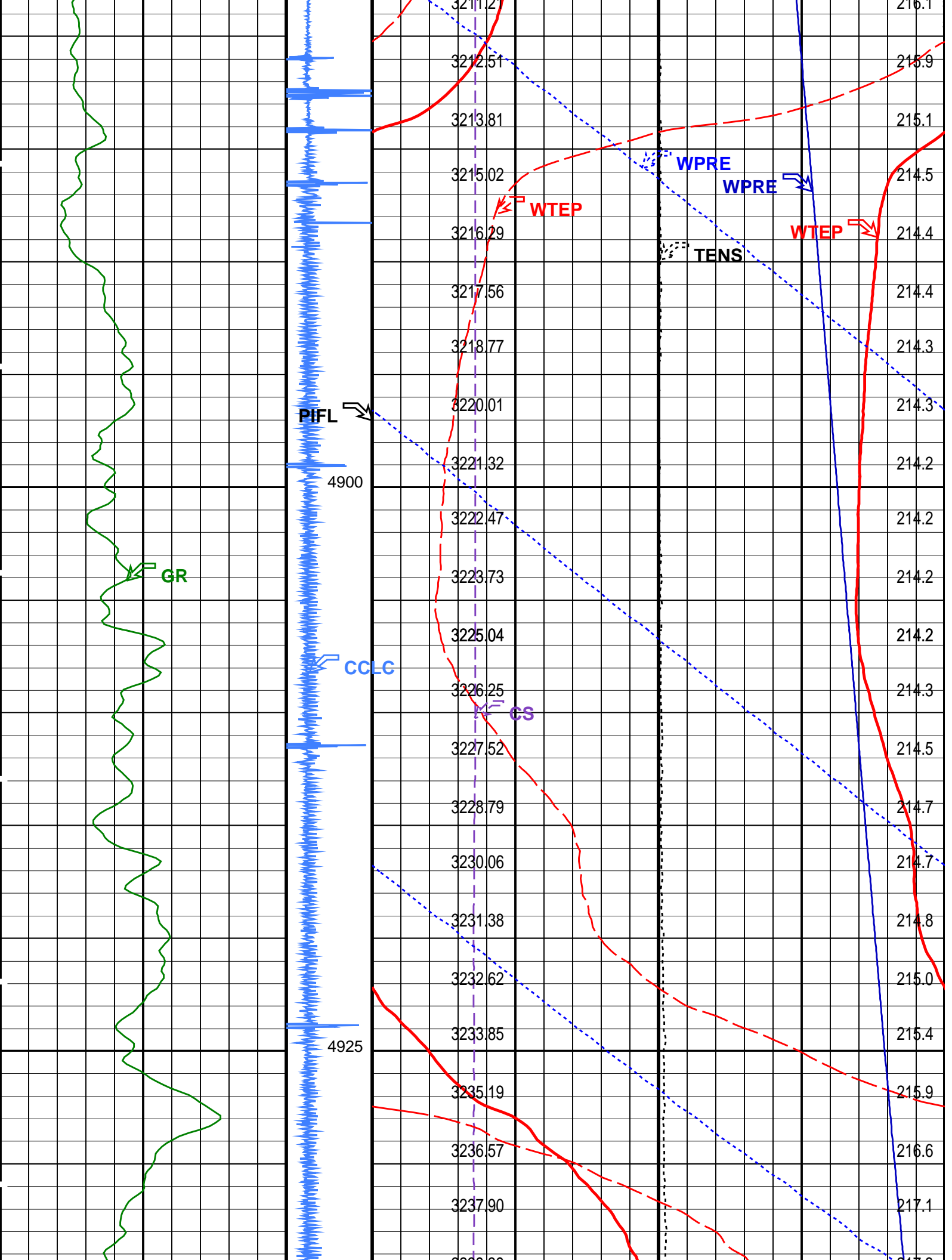
└─ Casing Collars

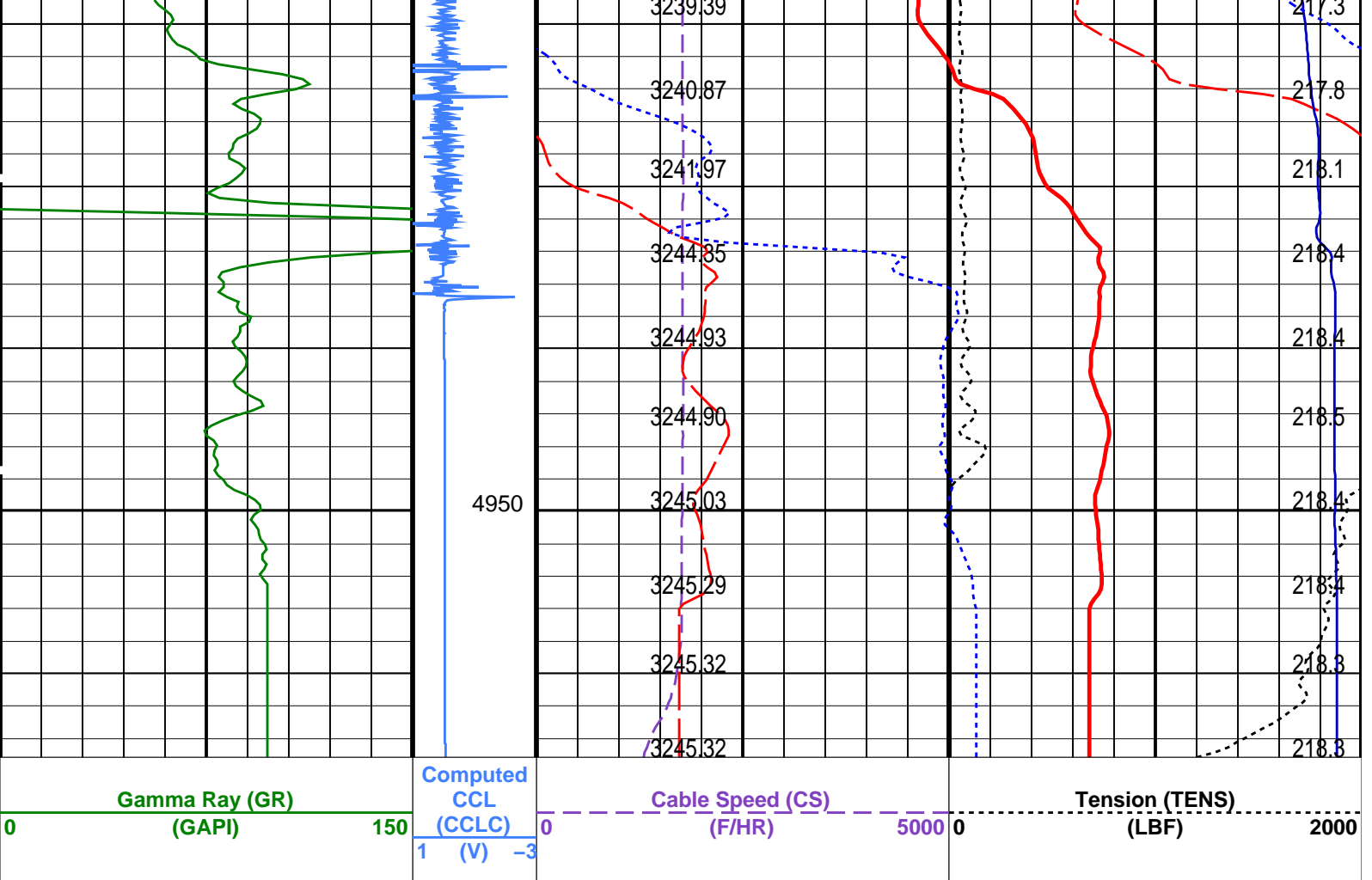
Parameters

DLIS Name		Description	Value	
CCLD	CCL-L: Casing Collar Locator			
	CCLD	CCL reset delay	12	IN
CCLT		CCL Detection Level	0.3	V
System and Miscellaneous				
DO		Depth Offset for Playback	0.0	M
PP		Playback Processing	NORMAL	









Perfo  
Zone  
From  
PERFO\_  
CURVE to  
D3T

Well Temperature (WTEP) (DEGF)		
210		215
Well Pressure (WPRE) (PSIA)		Temperature (WTEP) (DEGF)
Well Temperature (WTEP) (DEGF)		
0		2
Well Pressure (WPRE) (PSIA)		
3100		3250
Amplified Well Pressure (WPRE) (PSIA)		
0		10

PIP SUMMARY

Time Mark Every 60 S

Format: PSP\_1 Vertical Scale: 1:200 Graphics File Created: 12-Jul-2008 09:23

OP System Version: 15C0-309

MCM

PSPT-B SRPC-3546-Q1\_2008\_OP15

Parameters

DLIS Name	Description	Value
DO	System and Miscellaneous	
PP	Depth Offset for Playback	3.7 M
	Playback Processing	NORMAL

Input DLIS Files

DEFAULT	PSP_036LUP	FN:34	PRODUCER	12-Jul-2008 09:06	4953.9 M	4818.6 M
---------	------------	-------	----------	-------------------	----------	----------

Output DLIS Files

DEFAULT	PSP_037PUP	FN:35	PRODUCER	12-Jul-2008 09:23
---------	------------	-------	----------	-------------------

Company: **Esso Australia Pty Ltd**

**Schlumberger**

Well: **FTA-A30A**  
Field: **Fortescue**  
Rig: **Crane/Prod 4**  
Country: **Australia**

7" Posiset Plug  
Cement Dump Bailer  
Record