

Reeves

TUBING STOP - CORRELATION

CML

1:200

COMPANY	SANTOS LTD.		
WELL	SEAMER 1		
FIELD	EXPLORATION		
PROVINCE/COUNTY	VICTORIA		
COUNTRY/STATE	AUSTRALIA		
LOCATION	ONSHORE OTWAY BASIN		
LSD	SEC	TWP	RGE
			Other Services
			CBL
API Number	Permit Number PEP 153		
Permanent Datum MSL	, Elevation 0 metres		
Log Measured From RT @ 63.7 m	above Permanent Datum		
Drilling Measured From RT			
Date	11-FEB-2003		
Run Number	ONE		
Depth Driller	1343.00	metres	
Depth Logger	1168.70	metres	
First Reading	1168.00	metres	
Last Reading	1120.00	metres	
Casing Driller	1343.00	metres	
Casing Logger	1343.00	metres	
Bit Size	6.75	inches	
Hole Fluid Type	BRINE		
Density / Viscosity			
PH / Fluid Loss			
Sample Source	N/A		
Rm @ Measured Temp			
Rmf @ Measured Temp			
Rmc @ Measured Temp			
Source Rmf / Rmc	N/A	N/A	
Rm @ BHT			
Time Since Circulation	N/A		
Max Recorded Temp	56.00	deg C	
Equipment Name	CML		
Equipment / Base		ROMA	
Recorded By	M.BARNES		
Witnessed By	P.POLLARD		
Last Title			

BOREHOLE RECORD

Bit Size inches	Depth From metres	Depth To metres
6.750	434.50	1360.00

CASING RECORD

Type	Size inches	Depth From metres	Shoe Depth metres	Weight pounds/ft
	3.500	0.00	1356.50	9.20

REMARKS

- 38 DEG 33' 24.28" S, 143 DEG 01' 15.7" E.
- Memory MGC recorded on Slickline Unit (Expertest 224).
- Tagged top of Tubing Stop at 1168.7 m.

All interpretations are opinions based on inferences from electrical or other measurements and we cannot, and do not, guarantee the accuracy or correctness of any interpretations, and we shall not, except in the case of gross or wilful negligence on our part, be liable or responsible for any loss, costs, damages or expenses incurred or sustained by anyone resulting from any interpretation made by any of our officers, agents or employees. These interpretations are also subject to our general terms and conditions in our price schedule.

CORRELATION LOG

Depth Based Data - Maximum Sampling Increment 10.0cm
Filename: C:\data\seamer 1\CORRELATION 2.dta
System Configuration Dates: Logged 21-JUN-2002: Processed 21-JUN-2002: Plotted 20-JUN-2002:

Plotted on 11-FEB-2003 14:40
Recorded on 11-FEB-2003 08:55

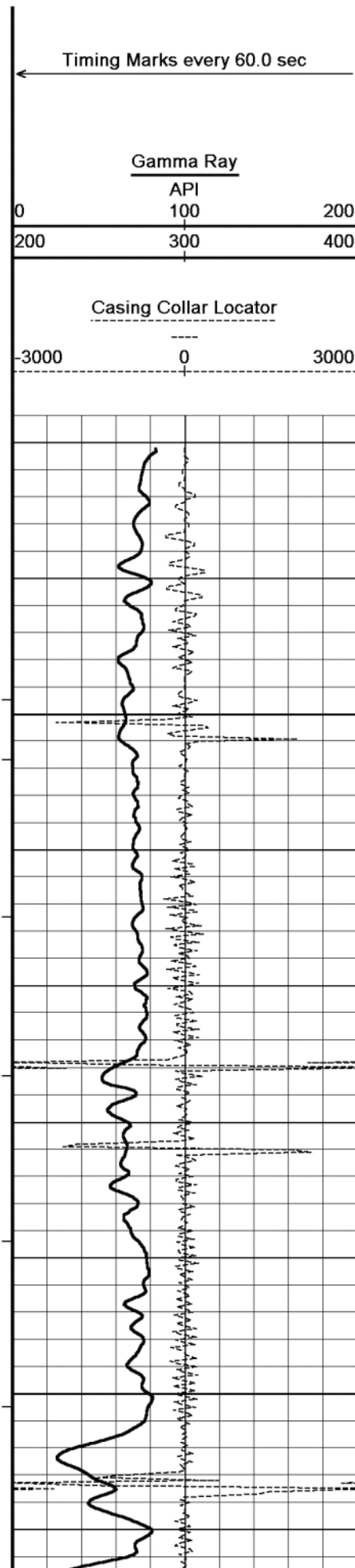
Depth
in
Metres

Timing Marks every 60.0 sec

Reeves

Printed with ReeView

Page 1 of 5



in
Metres

Borehole
Temp in
deg C

Replay
Scale
1:200

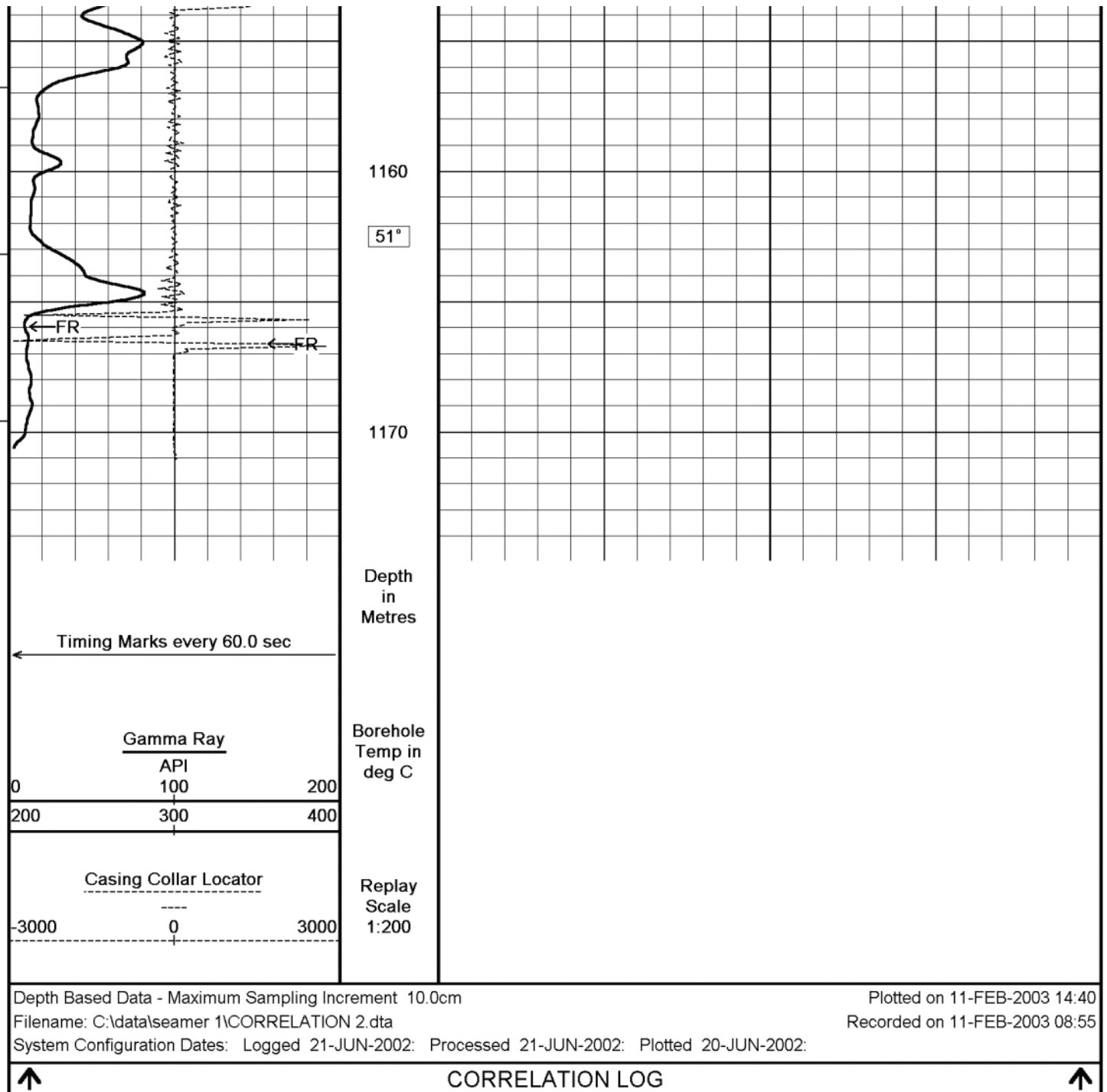
1120

1130

50°

1140

1150



BEFORE SURVEY CALIBRATION

C:\data\seamer 1\CORRELATION 2.dta

General Constants All 000

General Parameters

Mud Resistivity	0.10	ohm-metres
Mud Resistivity Temperature	25.00	degrees C
Water Level	0.00	metres
Density/Neutron Processing	Wet Hole	

Hole/Annular Volume Parameters

HVOL Caliper 1	Bit Size	
HVOL Caliper 2	None	
Annular Volume Diameter	4.50	inches

Rwa Parameters

Reeves

Printed with ReeView

Page 3 of 5

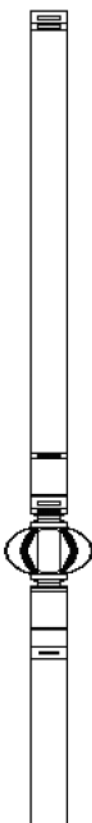
Annular Volume Diameter	4.50	inches	
Rwa Parameters			
Porosity used	N/A		
Resistivity used	N/A		
RWA Constant A	N/A		
RWA Constant M	N/A		
Gamma Calibration MCG 043			Field Calibration on 9-FEB-2003,07:05
	Measured	Calibrated (API)	
Background	27	17	
Calibrator (Gross)	1430	926	
Calibrator (Net)	1404	909	
Gamma Constants MCG 043			
Gamma Calibrator Number	060		
Mud Density	1.06	gm/cc	
Caliper Source for Processing	Bit Size		
Tool Position	Centred		
Concentration of KCl	0.00	kppm	
SP Calibration MCG 043			Field Calibration on 9-AUG-2002,07:01
	Measured	Calibrated (mV)	
Reference 1	101.0	99.0	
Reference 2	-102.0	-99.0	
High Resolution Temperature Calibration MCG 043			Field Calibration on 9-AUG-2002,07:03
	Measured	Calibrated(Deg C)	
Lower	20.50	20.00	
Upper	51.00	50.00	
High Resolution Temperature Constants MCG 043			
Pre-filter Length	11		

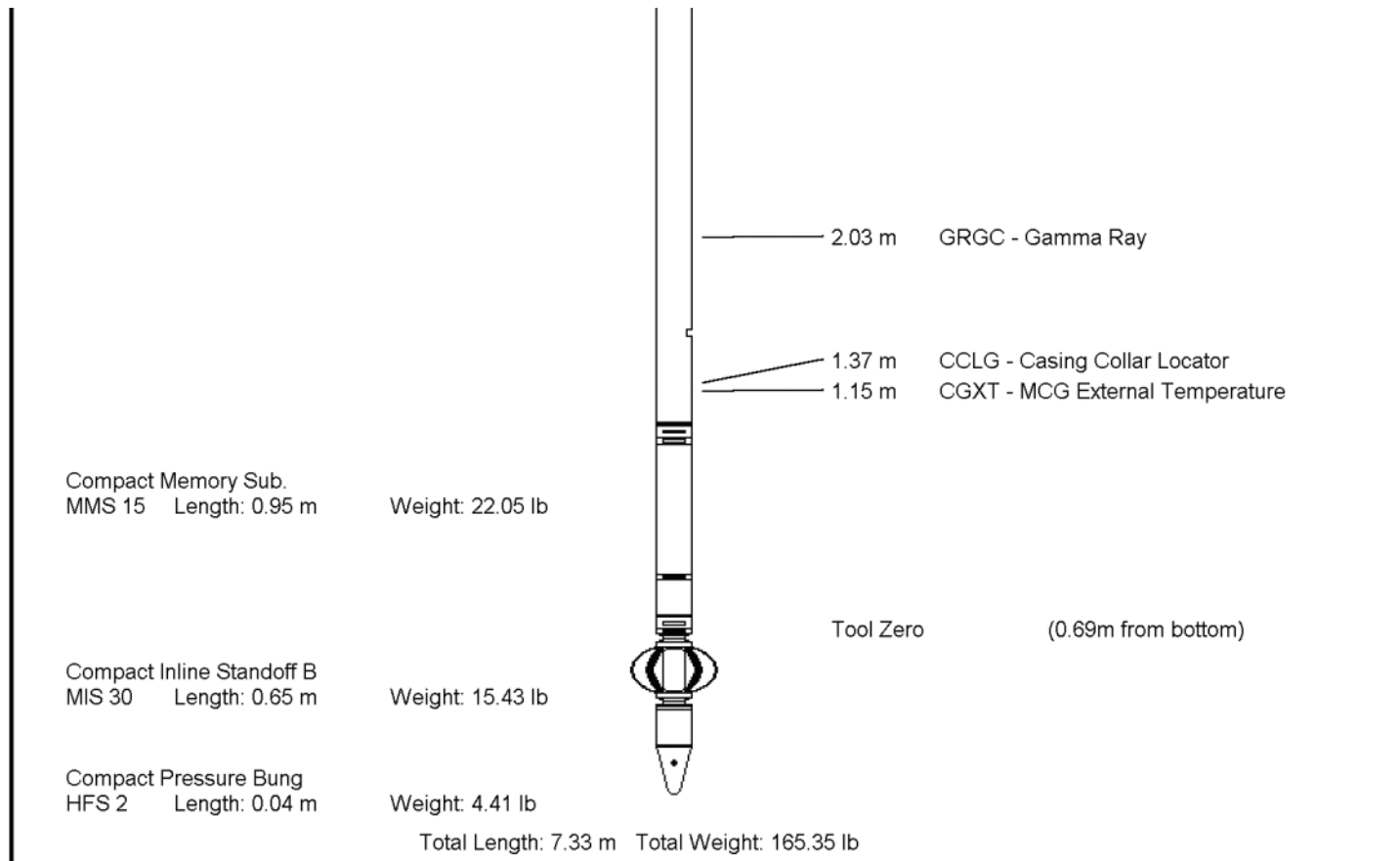
DOWNHOLE EQUIPMENT
All measurements relative to tool zero.

Compact Battery Sub.
MBS 15 Length: 2.39 m Weight: 44.09 lb

Compact Inline Standoff B
MIS 31 Length: 0.65 m Weight: 15.43 lb

Compact Gamma
MCG 43 Length: 2.65 m Weight: 63.93 lb





COMPANY		SANTOS LTD.			
WELL		SEAMER 1			
FIELD		EXPLORATION			
PROVINCE/COUNTY		VICTORIA			
COUNTRY/STATE		AUSTRALIA			
Elevation Kelly Bushing	63.70	metres	First Reading	1168.00	metres
Elevation Drill Floor	63.70	metres	Depth Driller	1343.00	metres
Elevation Ground Level	58.51	metres	Depth Logger	1168.70	metres
<div> <div> Reeves </div> <div> TUBING STOP - CORRELATION CML 1:200 </div> </div>					