

Company: Esso Australia Pty Ltd

Well: Mackerel A4A  
Field: Mackerel  
Rig: Rig 22/Prod 2

Country: Australia

3.65" Powercutter  
Tubing Cut Record  
29-Dec-2009

Bass Strait  
Gippsland  
Basin

Elev.: K.B. 33.80 m  
G.L. -93.00 m  
D.F. 33.80 m

Permanent Datum: M.S.L.  
Log Measured From: D.F.  
Drilling Measured From: D.F.

Elev.: 0.00 m  
33.80 m above Perm. Datum

Rig: Rig 22/Prod 2  
Field: Mackerel  
Location: Bass Strait  
Well: Mackerel A4A  
Company: Esso Australia Pty Ltd

LOCATION

State: Victoria

Max. Well Deviation 42 deg

Longitude 148° 20' 28.54" E

Latitude 038° 28'50.13" S

PVT DATA			Run 1	Run 2	Run 3
Oil Density					
Water Salinity					
Gas Gravity					
Bo					
Bw					
1/Bg					
Bubble Point Pressure					
Bubble Point Temperature					
Solution GOR					
Maximum Deviation	42 deg				
CEMENTING DATA					
Primary/Squeeze	Primary				
Casing String No					
Lead Cement Type					
Volume					
Density					
Water Loss					
Additives					
Tail Cement Type					
Volume					
Density					
Water Loss					
Additives					
Expected Cement Top					

Logging Date	29-Dec-2009		
Run Number	1 - 3		
Depth Driller	2801 m		
Schlumberger Depth	2629 m		
Bottom Log Interval	2629 m		
Top Log Interval	2587 m		
Casing Fluid Type	Inhibited Sea Water		
Salinity			
Density	8.55 g/cm3		
Fluid Level	0 m		
BIT/CASING/TUBING STRING			
Bit Size	8.500 in		
From	744 m		
To	2796.5 m		
Casing/Tubing Size	4.500 in		
Weight	29.7 lbm/ft		
Grade	N-80		
From	15.4 m		
To	2629.55 m		
Maximum Recorded Temperatures			
Logger On Bottom	29-Dec-2009		11:58
Unit Number	3827	AUSL	
Recorded By	M.Pratt, J. Hollingworth		
Witnessed By	D. Broomfield, B. Robertson		

Logging Date			
Run Number			
Depth Driller			
Schlumberger Depth			
Bottom Log Interval			
Top Log Interval			
Casing Fluid Type			
Salinity			
Density			
Fluid Level			
BIT/CASING/TUBING STRING			
Bit Size			
From			
To			
Casing/Tubing Size			
Weight			
Grade			
From			
To			
Maximum Recorded Temperatures			
Logger On Bottom			
Unit Number			
Recorded By			
Witnessed By			

## DEPTH SUMMARY LISTING

Date Created: 27-DEC-2009 22:26:15

## Depth System Equipment

Depth Measuring Device		Tension Device		Logging Cable	
Type:	IDW-C	Type:	CMTD-B/A	Type:	2-32ZT
Serial Number:	796	Serial Number:	1711	Serial Number:	24187
Calibration Date:	11-Nov-2009	Calibration Date:	04-MAR-200	Length:	6043 M
Calibrator Serial Number:	30	Calibrator Serial Number:	1173		
Calibration Cable Type:	2-32ZT	Number of Calibration Points:	0	Conveyance Method:	Wireline
Wheel Correction 1:	-1			Rig Type:	Offshore Fixed
Wheel Correction 2:	1				

## Depth Control Parameters

Log Sequence:	Subsequent Log In the Well
Reference Log Name:	UNKNOWN
Reference Log Run Number:	UNKNOWN
Reference Log Date:	UNKNOWN

## Depth Control Remarks

1. Log correlated to EXXON Mobil tubing Tally in approved program dated 23-Dec-09
2. IDW used as primary depth control
3. Z-chart used as backup.
4. CMTD calibration:  $a=1.32E-5$ ,  $B=0.8513$ , &  $C=2.868$
5. 10K Full Pressure Equipment Used
- 6.

## DISCLAIMER






THE USE OF AND RELIANCE UPON THIS RECORDED-DATA BY THE HEREIN NAMED COMPANY (AND ANY OF ITS AFFILIATES, PARTNERS, REPRESENTATIVES, AGENTS, CONSULTANTS AND EMPLOYEES) IS SUBJECT TO THE TERMS AND CONDITIONS AGREED UPON BETWEEN SCHLUMBERGER AND THE COMPANY, INCLUDING: (a) RESTRICTIONS ON USE OF THE RECORDED-DATA; (b) DISCLAIMERS AND WAIVERS OF WARRANTIES AND REPRESENTATIONS REGARDING COMPANY'S USE OF AND RELIANCE UPON THE RECORDED-DATA; AND (c) CUSTOMER'S FULL AND SOLE RESPONSIBILITY FOR ANY INFERENCE DRAWN OR DECISION MADE IN CONNECTION WITH THE USE OF THIS RECORDED-DATA.

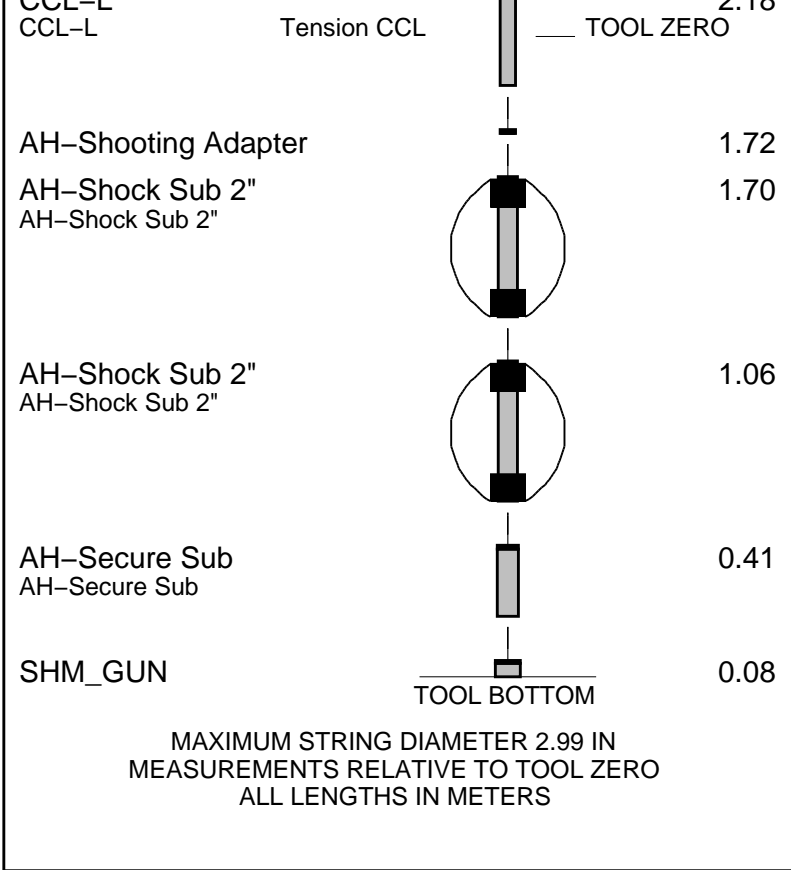
OTHER SERVICES1 OS1: Drift Run OS2: OS3: OS4: OS5:	OTHER SERVICES2 OS1: OS2: OS3: OS4: OS5:
REMARKS: RUN NUMBER 1	REMARKS: RUN NUMBER 2
Log correlated to Tubing Tally provided by client.	
Objective: Run 3.65" Drift run with Dummy Cutter Tool String to 2615m MDKB.	
Cut production tubing above Packer @2611m MDKB to recover tubing	
Max deviation 42 deg @ 1240m MDKB	
Full 10K Pressure Equipment Used.	
Cut a second time	
CCI to Bottom of Dummy Cutter Tool String = 1.9m	

CCL to Bottom of Drilling Casing: Not Drilling	
3.65" Powercutter:	
Top Shot @ 2612m MDKB.	
CCL to Top Shot: 1.9 m	
CCL stop depth: 2610.1m MDKB.	
Secure Initiated	
3.65" Powercutter:	
Top Shot @ 2610.5m MDKB.	
CCL to Top Shot: 1.9 m	
CCL stop depth: 2608.6m MDKB.	

RUN 1			RUN 2		
SERVICE ORDER #:		4500617549	SERVICE ORDER #:		
PROGRAM VERSION:		17C0-154	PROGRAM VERSION:		
FLUID LEVEL:		0 m	FLUID LEVEL:		
LOGGED INTERVAL	START	STOP	LOGGED INTERVAL	START	STOP

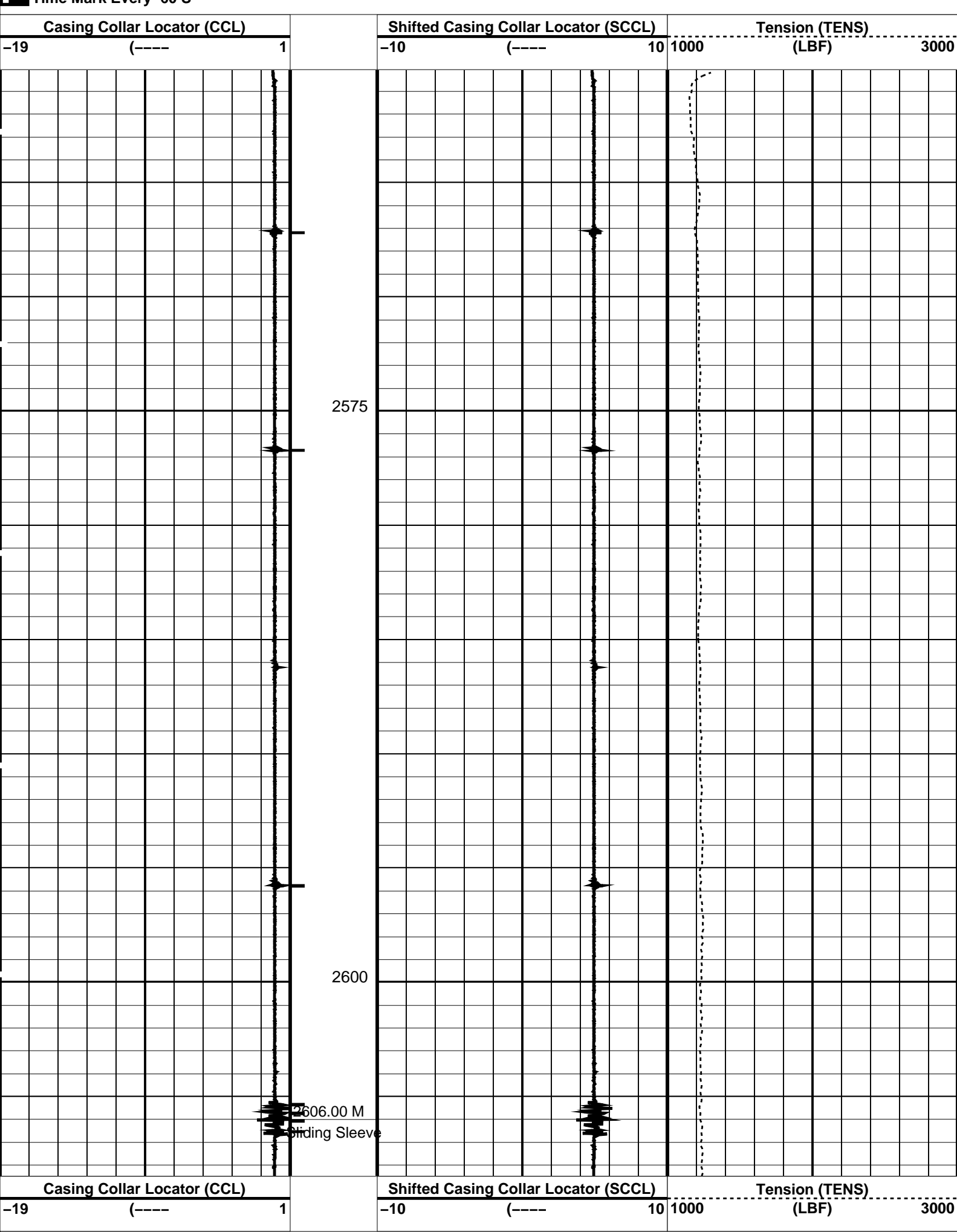
EQUIPMENT DESCRIPTION					
RUN 1			RUN 2		

SURFACE EQUIPMENT		
SHM-EA		
DOWNHOLE EQUIPMENT		
MH-22 MH-22		6.40
AH-38		5.92
EQF-43 EQF-43 201		5.83
EQF-43 EQF-43		4.00
CCL-1		2.18



Production String	(in)			Well Schematic	(m)			Casing String
	OD	ID	MD		MD	OD	ID	
Mean Sea Level			33.8					
Tubing Hanger	4.500	2.700	0.0		-304.6	7.625		Casing String
Tubing	4.500				-304.6	10.750		Casing String
SSV	4.500							
Sliding Sleeve	4.500				744.0	10.750		Casing Shoe
Sliding Sleeve	4.500							
Sliding Sleeve	4.500							
Sliding Sleeve	4.500							
Sliding Sleeve	4.500							
Sliding Sleeve	4.500							

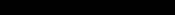




PIP SUMMARY

└ Casing Collars

OP System Version: 17C0-154				
SHM_GUN	17C0-154	CCL-L	17C0-154	



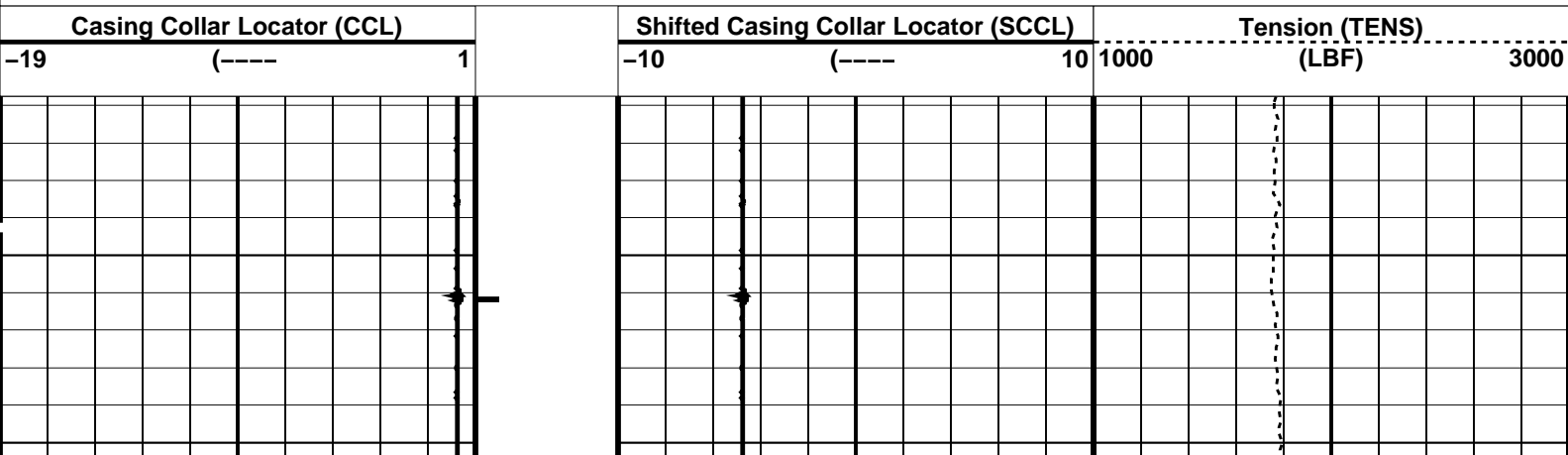
Shoot Pass

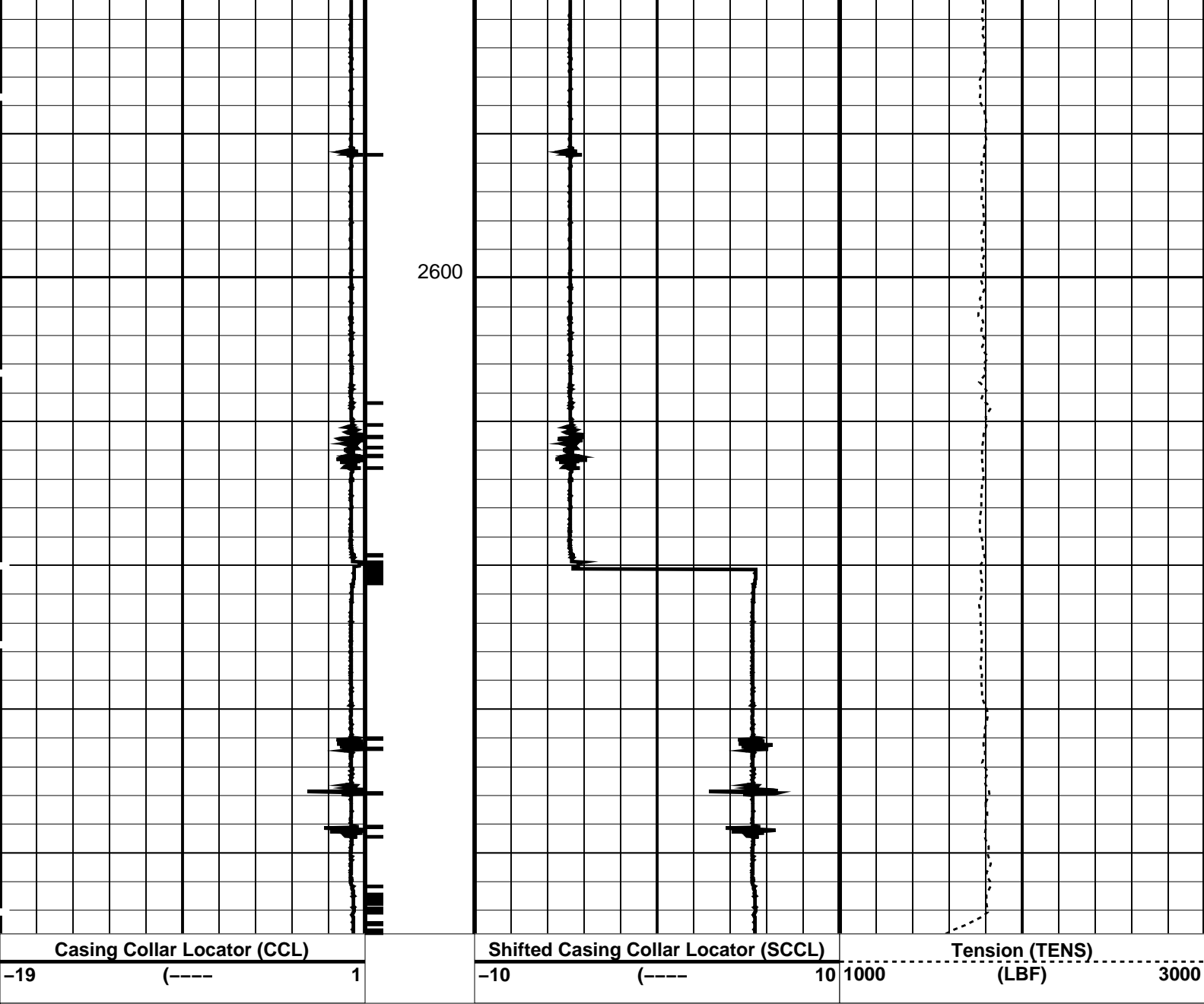
3.65 PowerCutter 1

MAXIS Field Log

PIP SUMMARY

Time Mark Every 60 S      Casing Collars





PIP SUMMARY

Time Mark Every 60 S

Casing Collars

Parameters		
DLIS Name	Description	Value
CCL-L: Casing Collar Locator		
CCLD	CCL reset delay	12 IN
CCLT	CCL Detection Level	0.3 V

Format: PERFO Vertical Scale: 1:200 Graphics File Created: 31-Dec-2009 04:02

OP System Version: 17C0-154			
SHM_GUN	17C0-154	CCL-L	17C0-154

Output DLIS Files			
DEFAULT	PERFO_004LUP	FN:3	PRODUCER 31-Dec-2009 04:02

Correlation Pass			
------------------	--	--	--



MAXIS Field Log

Company:

Well:

## Output DLIS Files

DEFAULT

PERFO\_003LUP

FN:2

PRODUCER

31-Dec-2009 03:57 2623.1 M

2593.1 M

## OP System Version: 17C0-154

SHM\_GUN

17C0-154

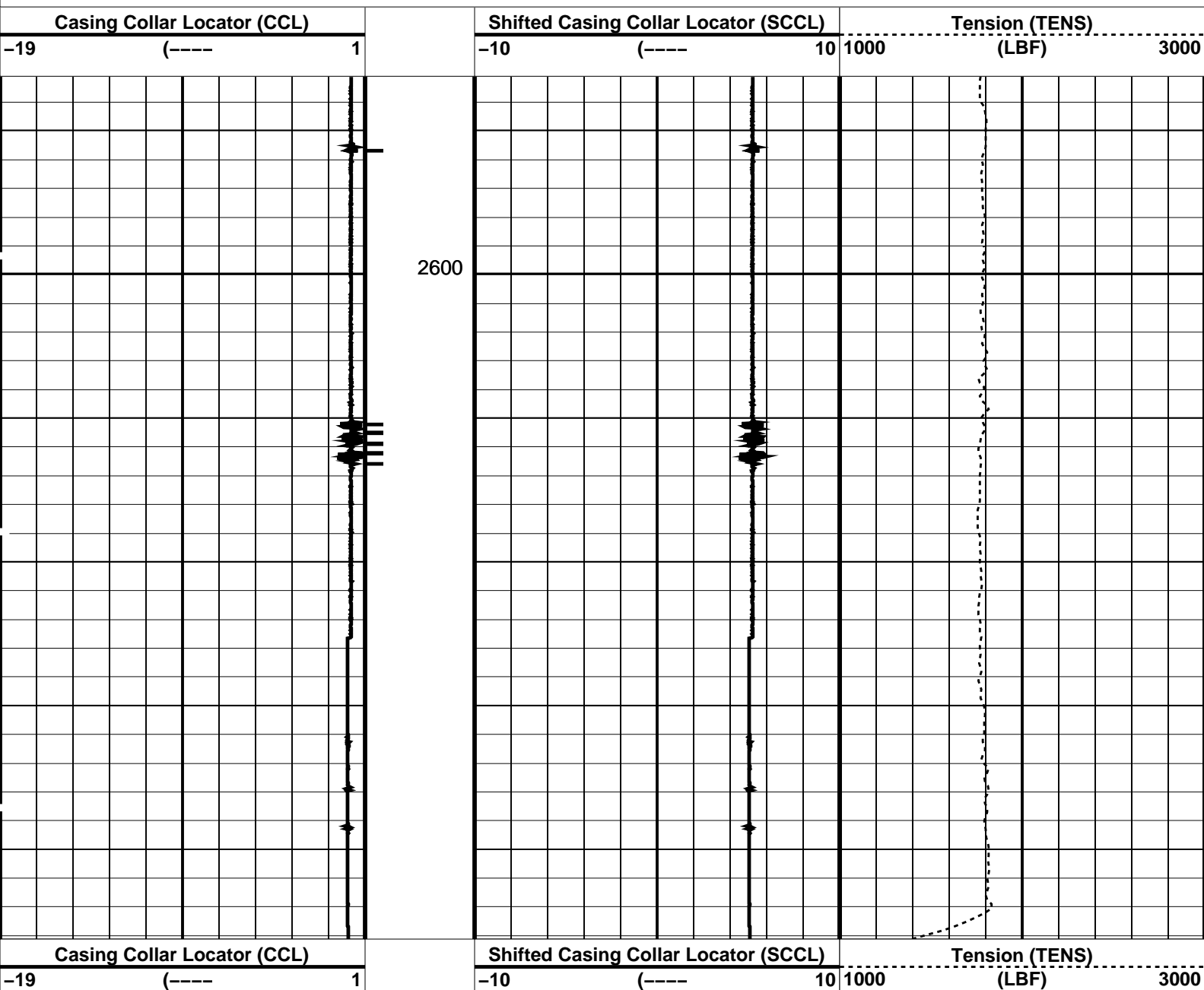
CCL-L

17C0-154

## PIP SUMMARY

└─ Casing Collars

Time Mark Every 60 S



## PIP SUMMARY

└─ Casing Collars

Time Mark Every 60 S

Casing Collars

Parameters

DLIS Name	Description	Value
CCLD	CCL-L: Casing Collar Locator	12 IN
CCLT	CCL reset delay	0.3 V
	CCL Detection Level	

Format: PERFO

Vertical Scale: 1:200

Graphics File Created: 31-Dec-2009 03:57

OP System Version: 17C0-154

SHM_GUN	17C0-154	CCL-L	17C0-154
---------	----------	-------	----------

Output DLIS Files

DEFAULT	PERFO_003LUP	FN:2	PRODUCER	31-Dec-2009 03:57
---------	--------------	------	----------	-------------------

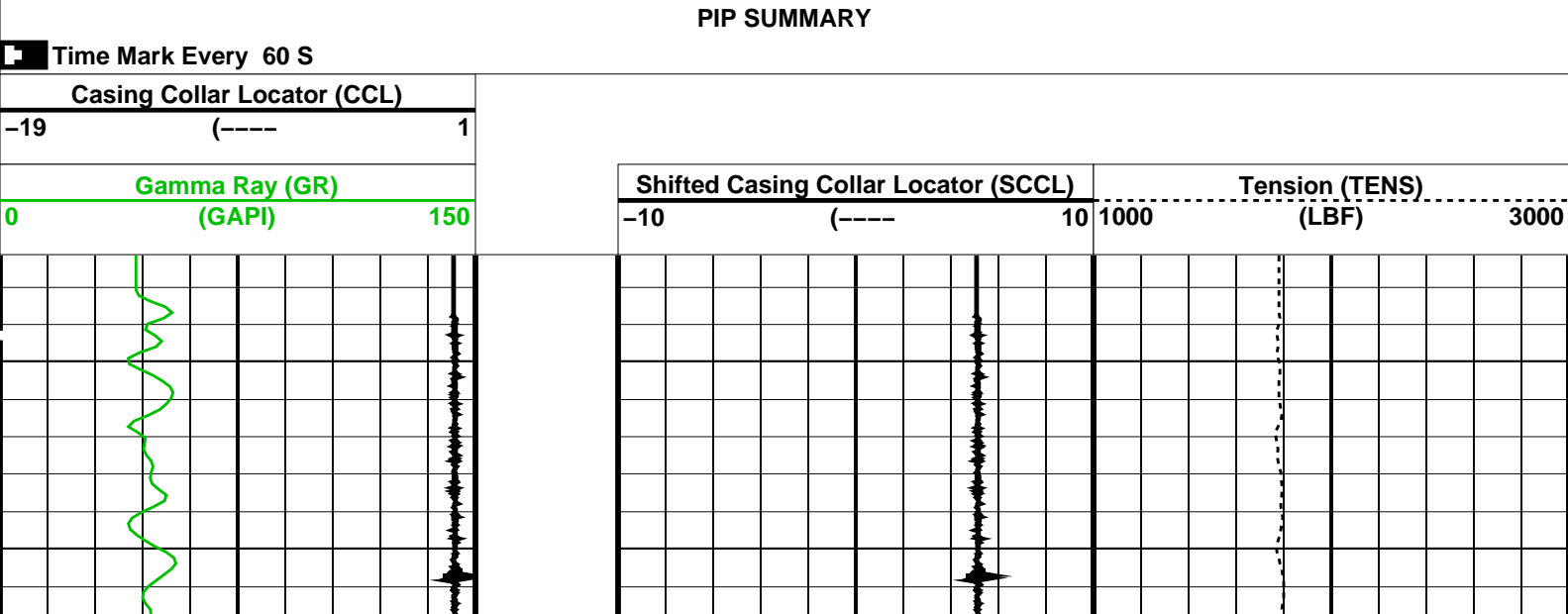


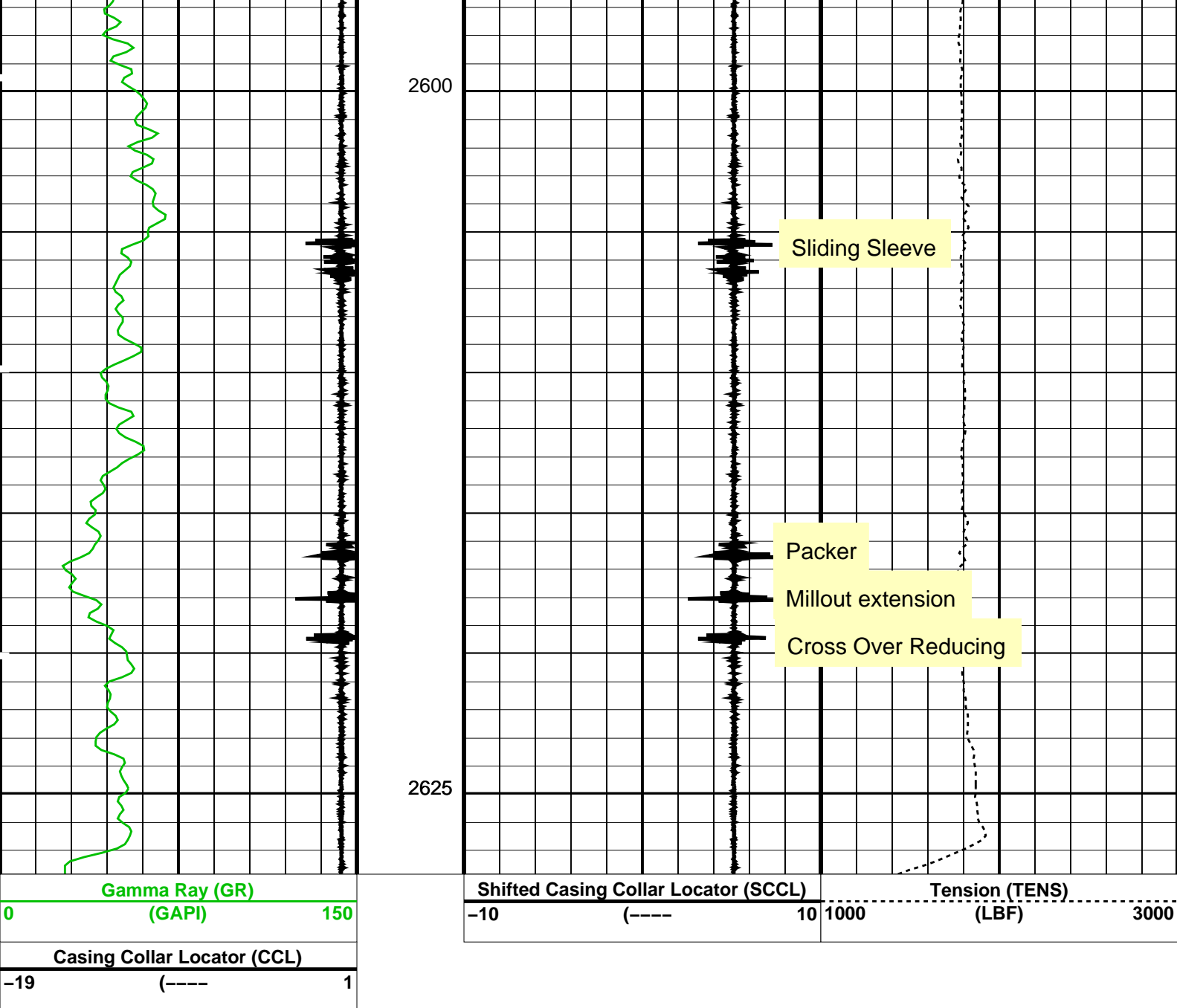
3.65" Drift

Dummy Cutter Pass

MAXIS Field Log

Company: Esso Australia Pty Ltd						Well: MKA A4A
Input DLIS Files						
DEFAULT	PERFO_017LUP	FN:16	PRODUCER	30-Dec-2009 00:10	2626.8 M	2586.8 M
Output DLIS Files						
DEFAULT	PERFO_020PUP	FN:19	PRODUCER	30-Dec-2009 00:47	2627.8 M	2587.0 M
OP System Version: 17C0-154						
SHM_GUN	17C0-154		UPCT-A	17C0-154		





PIP SUMMARY

Time Mark Every 60 S

Parameters		
DLIS Name	Description	Value
DO	System and Miscellaneous	1.1 M
PP	Depth Offset for Playback	NORMAL
Playback Processing		

Format: PERFO Vertical Scale: 1:200 Graphics File Created: 30-Dec-2009 00:47

OP System Version: 17C0-154			
SHM_GUN	17C0-154	UPCT-A	17C0-154

Input DLIS Files						
DEFAULT	PERFO_017LUP	FN:16	PRODUCER	30-Dec-2009 00:10	2626.8 M	2586.8 M
Output DLIS Files						
DEFAULT	PERFO_020PUP	FN:19	PRODUCER	30-Dec-2009 00:47		

Company: **Esso Australia Pty Ltd**

**Schlumberger**

Well: **Mackerel A4A**

Field: **Mackerel**

Rig: **Rig 22/Prod 2**

Country: **Australia**

3.65" Powercutter  
Tubing Cut Record  
29-Dec-2009