

Company: Esso Australia Pty Ltd

Well: WKF W5A

Field: West Kingfish

Rig: 175

Country: Australia

Junk Basket with 6" Gauge Ring  
Max-R Setting Record  
Perforation Record 15-Nov-2009

Rig: 175  
Field: West Kingfish  
Location: Bass Strait  
Well: WKF W5A  
Company: Esso Australia Pty Ltd

175	West Kingfish	Bass Strait Gippsland	Elev.: K.B. 41.73 m G.L. -77.00 m D.F. 41.73 m	LOCATION		
				Permanent Datum:	MSL	
				Log Measured From:	Drill Floor	
				Drilling Measured From:	Drill Floor	
Rig:	Field:	Location:	Well:	Company:	Esso Australia Pt	
Logging Date	State: Victoria	Max. Well Deviation 60 deg	Longitude 148°6'19.67638" E	Latitude 38° 35' 34.70389" S		
Run Number		15-Nov-2009				
Depth Driller		1&2				
Schlumberger Depth		3372.9 m				
Bottom Log Interval		3342.6 m				
Top Log Interval		3240.3 m				
Casing Fluid Type		3238.3 m				
Salinity		Brine				
Density						
Fluid Level		8.55 g/cm3				
BIT/CASING/TUBING STRING		0 m				
Bit Size						
From		8.000 in				
To		678.5 m				
Casing/Tubing Size		3372.9 m				
Weight		7.000 in				
Grade		26 lbm/ft				
From		L-80				
To		19.5011 m				
Maximum Recorded Temperatures		3372.9 m				
Logger On Bottom	Time	15-Nov-2009				
Unit Number	Location	3829	AUSL			
Recorded By		M. Pratt, S Gilbert				
Witnessed By		M. Calicut, D Daniels, A Choy				

Run 1

PVT DATA		
Oil Density		
Water Salinity		
Gas Gravity		
Bo		
Bw		
1/Bg		
Bubble Point Pressure		
Bubble Point Temperature		
Solution GOR		
Maximum Deviation	60 deg	
CEMENTING DATA		
Primary/Squeeze		Primary
Casing String No		
Lead Cement Type		
Volume		
Density		
Water Loss		
Additives		
Tail Cement Type		
Volume		
Density		
Water Loss		
Additives		
Expected Cement Top		
Logging Date		
Run Number		
Depth Driller		
Schlumberger Depth		
Bottom Log Interval		
Top Log Interval		
Casing Fluid Type		
Salinity		
Density		
Fluid Level		
BIT/CASING/TUBING STRING		
Bit Size		
From		
To		
Casing/Tubing Size		
Weight		
Grade		
From		
To		
Maximum Recorded Temperatures		
Logger On Bottom		Time
Unit Number	Location	
Recorded By		
Witnessed By		

## DEPTH SUMMARY LISTING

Date Created: 16-NOV-2009 7:40:47

### Depth System Equipment

Depth Measuring Device		Tension Device		Logging Cable		
Type:	IDW-E	Type:	CMTD-B/A	Type:	7-42ZV XS	
Serial Number:	727	Serial Number:	1173	Serial Number:	708145	
Calibration Date:	9-Sep-2009	Calibration Date:	14-Nov-2009	Length:	6656 M	
Calibrator Serial Number:	30	Calibrator Serial Number:	300286	Conveyance Method:	Wireline	
Calibration Cable Type:	7-42ZV XS	Number of Calibration Points:	10		Rig Type:	Offshore Fixed
Wheel Correction 1:	-4	Calibration RMS:	30			
Wheel Correction 2:	-1	Calibration Peak Error:	41			

### Depth Control Parameters

Log Sequence:	First Log In the Well
Rig Up Length At Surface:	0.00 M
Rig Up Length At Bottom:	0.00 M
Rig Up Length Correction:	0.00 M
Stretch Correction:	
Tool Zero Check At Surface:	

### Depth Control Remarks

1. IDW used as primary depth control
2. First log in well schlumberger depth control procedures applied
3. All log zeroed at drill floor
4. Log correlated to Schlumberger MWD lod provided by the client

#### DISCLAIMER

THE USE OF AND RELIANCE UPON THIS RECORDED-DATA BY THE HEREIN NAMED COMPANY (AND ANY OF ITS AFFILIATES, PARTNERS, REPRESENTATIVES, AGENTS, CONSULTANTS AND EMPLOYEES) IS SUBJECT TO THE TERMS AND CONDITIONS AGREED UPON BETWEEN SCHLUMBERGER AND THE COMPANY, INCLUDING: (a) RESTRICTIONS ON USE OF THE RECORDED-DATA; (b) DISCLAIMERS AND WAIVERS OF WARRANTIES AND REPRESENTATIONS REGARDING COMPANY'S USE OF AND RELIANCE UPON THE RECORDED-DATA; AND (c) CUSTOMER'S FULL AND SOLE RESPONSIBILITY FOR ANY INFERENCE DRAWN OR DECISION MADE IN CONNECTION WITH THE USE OF THIS RECORDED-DATA.












OTHER SERVICES1
OS1: None

REMARKS: RUN NUMBER 1
Log correlated to Schlumberger LWD log provided by client
Objective: RIH with Junk Basket & 6" Guage ring to HUD, ensure access forMaxRrun
Set MaxR to perforate Interval 3238.3m - 3240.3m with 4-1/2 "HSD 12spf, 135/45 deg phased
perforating gun using 4512 Powerjet Omega charges. CPST Secure initiated
HUD tagged @ 3342.6m MDKB with Junk Basket

RUN 1		
SERVICE ORDER #:	B297-00020	
PROGRAM VERSION:	17C0-154	
FLUID LEVEL:	0 m	
LOGGED INTERVAL	START	STOP

LOGGED INTERVAL	START	STOP

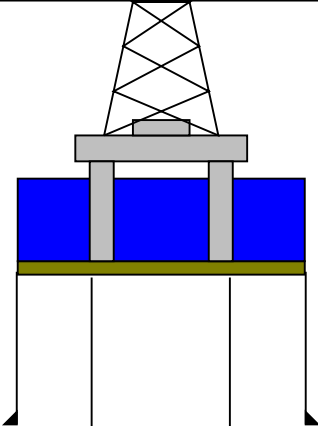
## RUN 2

RUN 1		RUN 2	
SURFACE EQUIPMENT		SURFACE EQUIPMENT	
WITM (SHM)		WITM (SHM)	
DOWNHOLE EQUIPMENT		DOWNHOLE EQUIPMENT	
PEH-A PEH-A 11	 4.46	PEH-A 3-3/8" PEH-A 3-3/8"	 18.20
AH-64 AH-64 8001	 3.92	AH-64 3-3/8"	 17.65
PGGT-D PGGC 6 PGGH-D 6	 3.51	PGGT-D Gamma Ray PGGC PGGH-D Casing Co Tension	 1.07 17.24  TOOL ZERO
		AH-283 3-3/8"	 15.46
		AH-CPST-AA 3-5/8" AH-CPST-AA 3-5/8"	 15.30
		AH-MaxR Setting Sleeve 5-1/2" AH-MaxR Setting Sleeve 5-1/2"	 13.01
		AH-7.0" MaxR 5-3/4" AH-7.0" MaxR 5-3/4"	 12.39
		AH-Gun Redundant Fill Sub 3-3/8" AH-Gun Redundant Fill Sub 3-3/8"	 9.64

Tool	Length (m)	Tool	Length (m)
AH-283 AH-283 5002	1.73	AH-Safety Spacer 4-1/2" AH-Safety Spacer 4-1/2"	6.64
AH-Junk Basket AH-Junk Basket	1.57	AH-4.5" 4512 PJ Omega 1 SPF HMX AH-4.5" 4512 PJ Omega 1 SPF HMX	3.64
AH-6" Gauge Ring	0.05	BNS-Roller Bottom Nose 4-3/4" BNS-Roller Bottom Nose 4-3/4"	1.64
SHM_GUN	0.00	SHM_GUN	0.00

MAXIMUM STRING DIAMETER 6.00 IN  
MEASUREMENTS RELATIVE TO TOOL ZERO  
ALL LENGTHS IN METERS

MAXIMUM STRING DIAMETER 5.75 IN  
MEASUREMENTS RELATIVE TO TOOL ZERO  
ALL LENGTHS IN METERS

Production String	(in)		(m)	Well Schematic	(m)	(in)		Casing String
	OD	ID	MD		MD	OD	ID	
Mean Sea Level			41.73		678.5		10.750	Surface Casing

[illegible]

## Job Events Summary

MAXIS Field Log

Schlumberger Job Event Summary						
	Time	Elapsed Time	Depth (M)			File
Log Pass (up)	16-Nov-2009 12:12	000:07	3267.9 - 3221.0			PERFO_030LUP
Log Pass (up)	16-Nov-2009 12:24	000:13	3263.2 - 3193.4			PERFO_032LUP

Company: Esso Australia Pty Ltd

Well: WKF W5A

Output DLIS Files

DEFAULT

PERFO\_032LUP

FN:31

PRODUCER

16-Nov-2009 12:24

OP System Version: 17C0-154

SHM\_GUN

17C0-154

PGGT-D

17C0-154

PIP SUMMARY

 Time Mark Every 60 S

Casing Collar Locator (CCL)

Tension (TENS)

-19 (----) 1

2000 (LBF) 4000

Gamma Ray (GR)  
(GAPI)

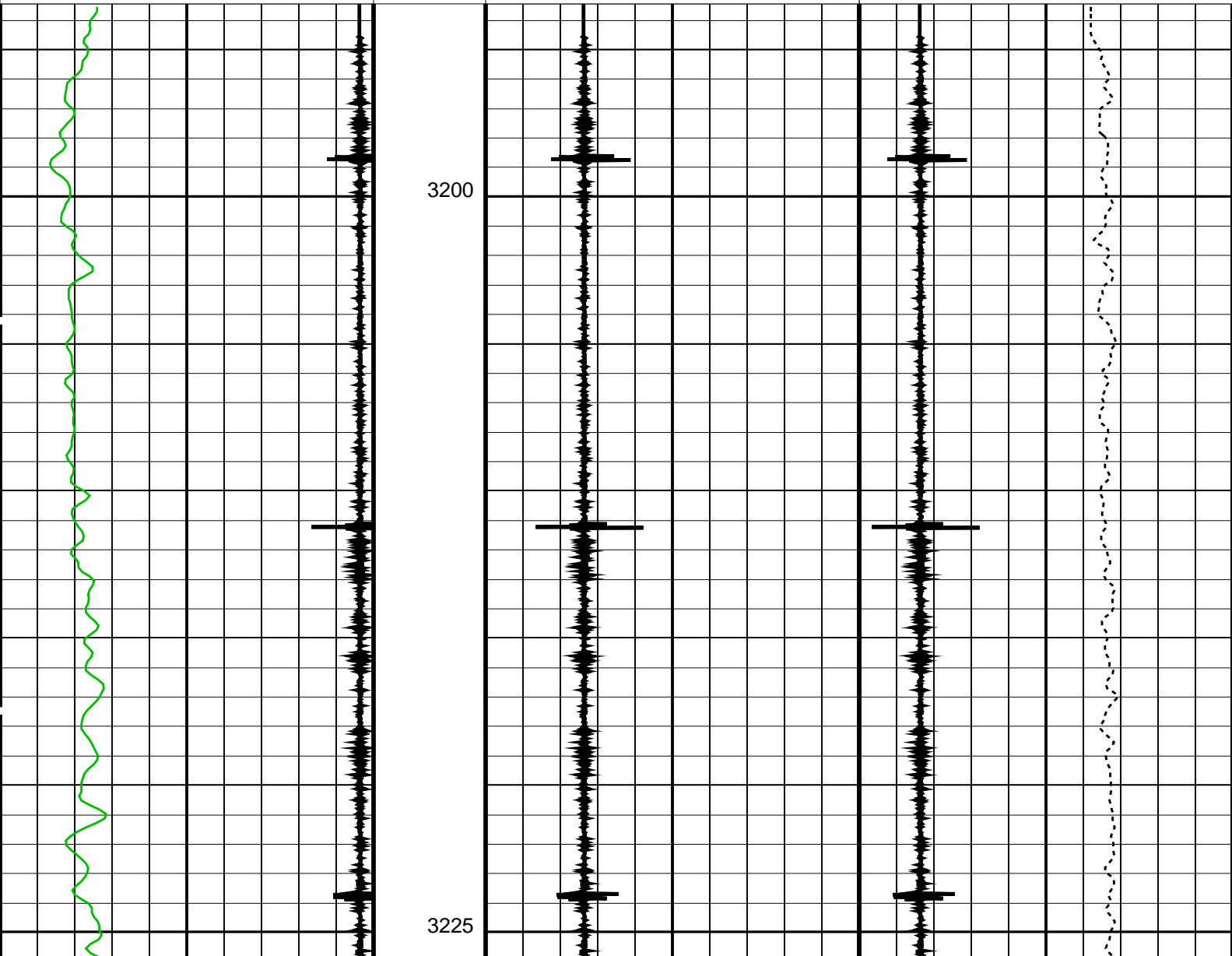
Shifted Casing Collar Locator (SCCL)

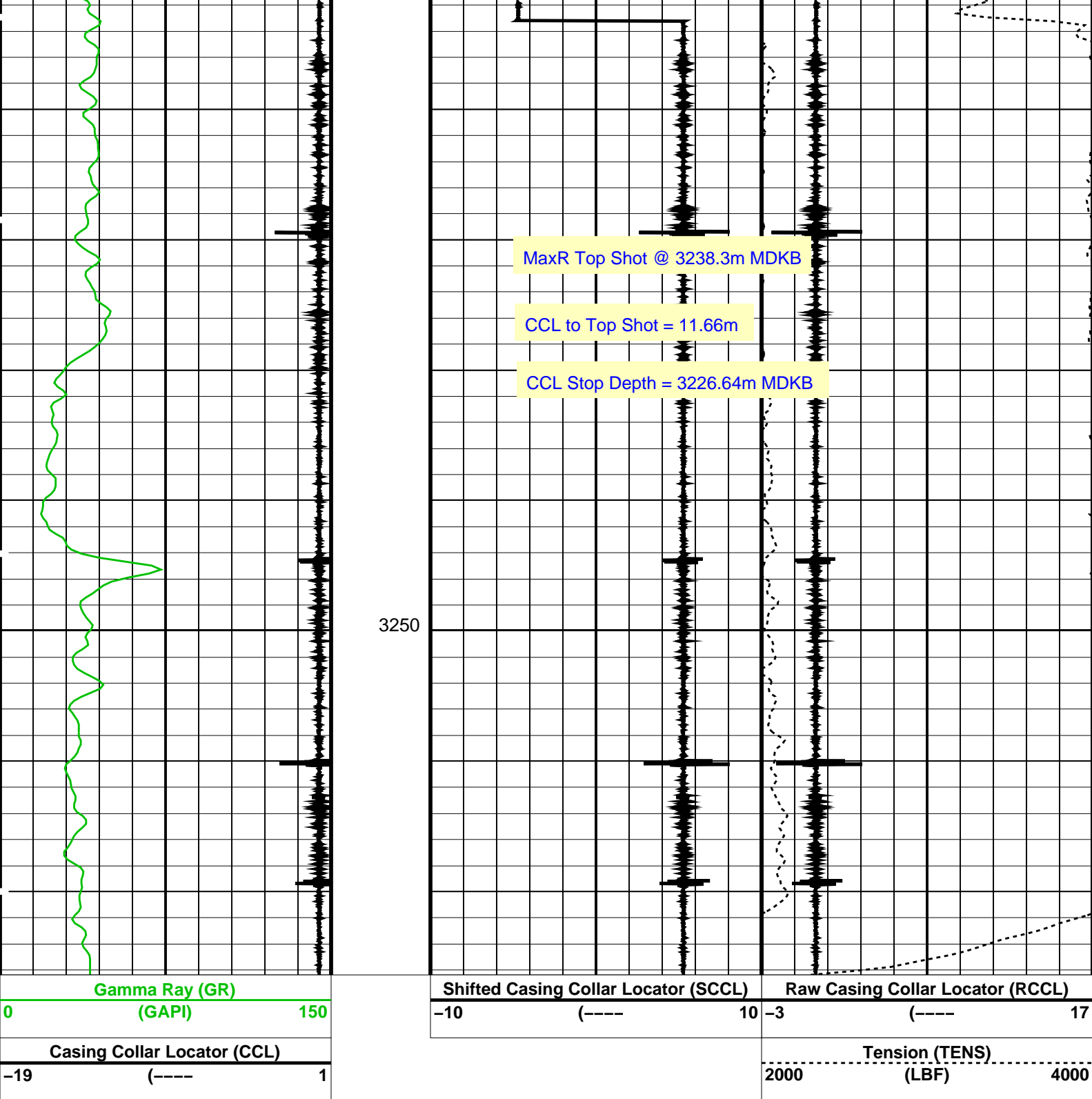
Raw Casing Collar Locator (RCCL)

0 150

-10 (----) 10

-3 (----) 17





PIP SUMMARY

<div>Time Mark Every 60 S</div>					
Format: PERFO		Vertical Scale: 1:200		Graphics File Created: 16-Nov-2009 12:24	
OP System Version: 17C0-154					
SHM_GUN	17C0-154	PGGT-D	17C0-154		
Output DLIS Files					
DEFAULT	PERFO_032LUP	FN:31	PRODUCER	16-Nov-2009 12:24	

Company: Esso Australia Pty Ltd

Well: WKF W5A

Output DLIS Files

DEFAULT

PERFO\_030LUP

FN:29

PRODUCER

16-Nov-2009 12:12

3267.9 M

3221.0 M

OP System Version: 17C0-154

SHM\_GUN

17C0-154

PGGT-D

17C0-154

PIP SUMMARY

 Time Mark Every 60 S

Casing Collar Locator (CCL)

-19

(----

1

Gamma Ray (GR)

(GAPI)

0

150

Shifted Casing Collar Locator (SCCL)

-10

(----

10

Tension (TENS)

(LBF)

2000

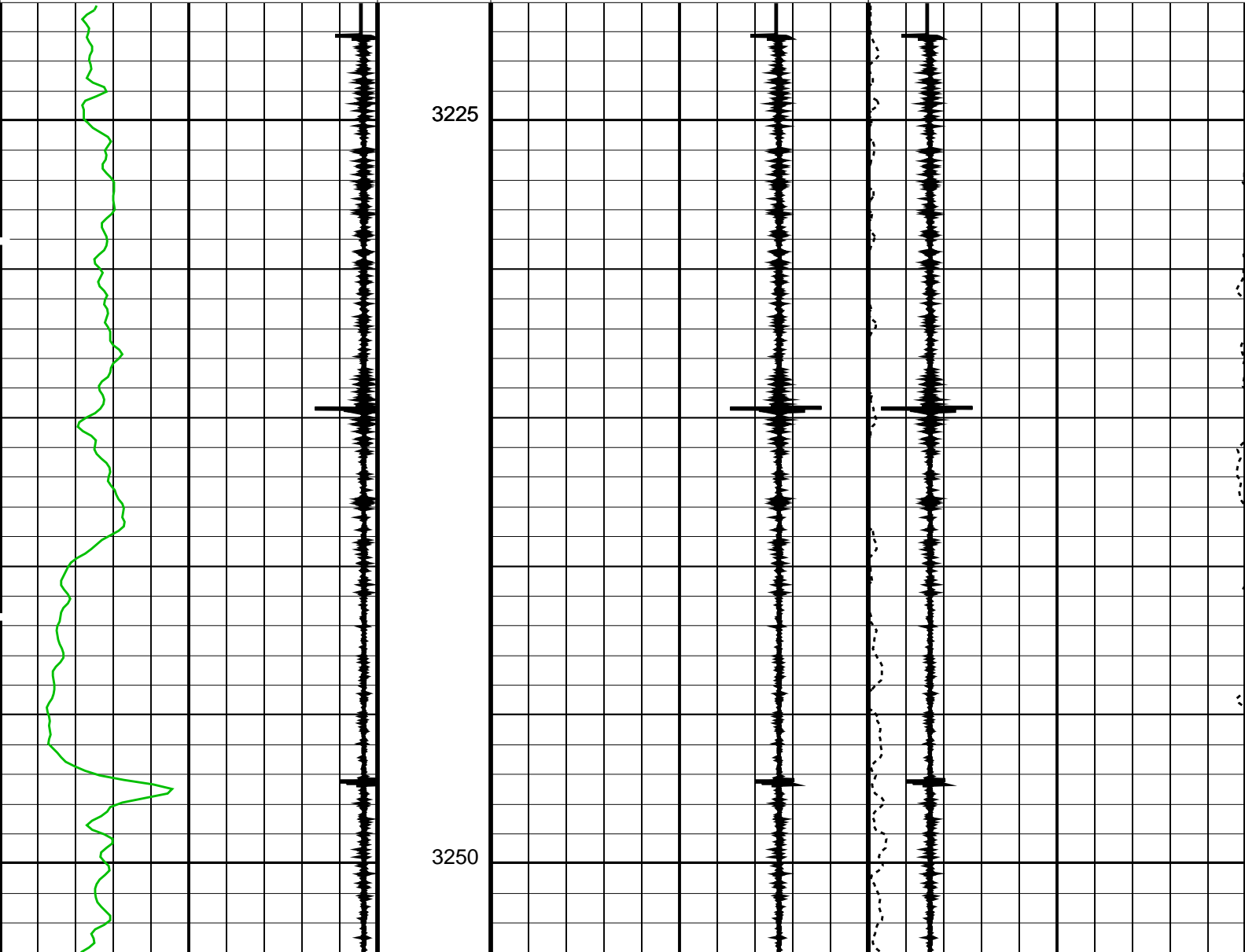
4000

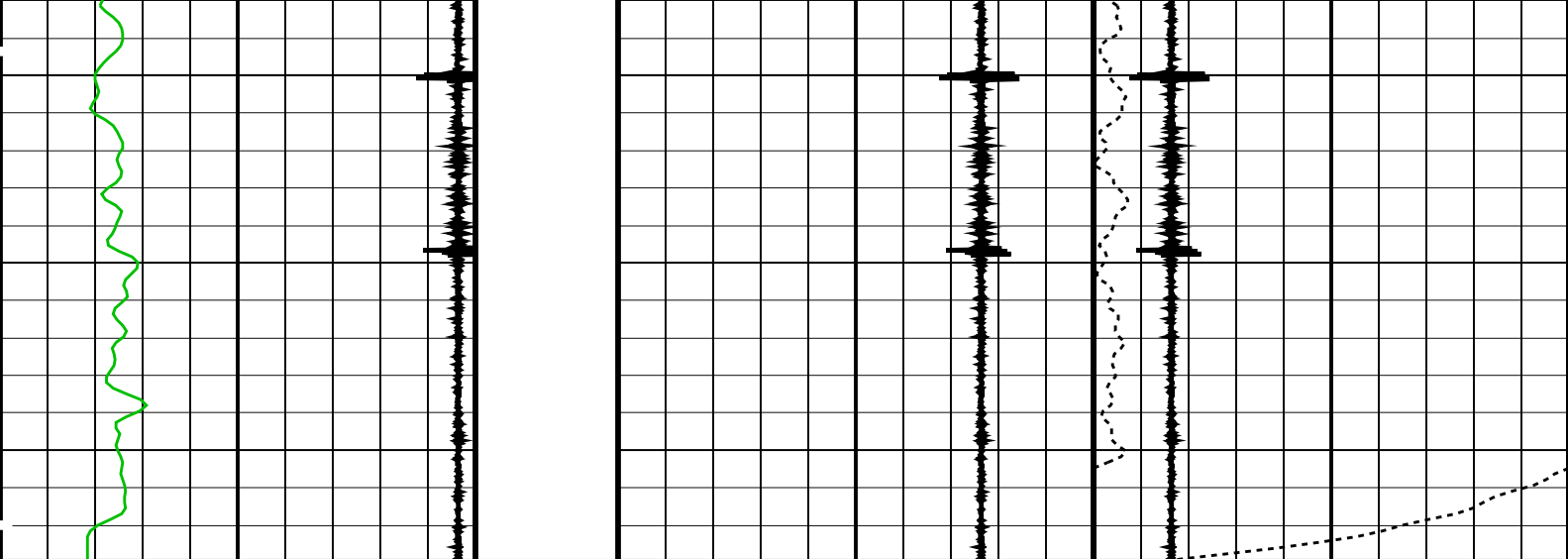
Raw Casing Collar Locator (RCCL)

-3

(----

17





Gamma Ray (GR) (GAPI)		0	150
Casing Collar Locator (CCL)		-19	1
Shifted Casing Collar Locator (SCCL)		-10	10
Raw Casing Collar Locator (RCCL)		-3	17
Tension (TENS) (LBF)		2000	4000

#### PIP SUMMARY

Time Mark Every 60 S

Format: PERFO Vertical Scale: 1:200

Graphics File Created: 16-Nov-2009 12:12

### OP System Version: 17C0-154

SHM\_GUN 17C0-154 PGGT-D 17C0-154

### Output DLIS Files

DEFAULT PERFO\_030LUP FN:29 PRODUCER 16-Nov-2009 12:12

**Schlumberger**

6" Junk Basket Pass

MAXIS Field Log

Company: Esso Australia Pty Ltd

Well: WKF W5A

### Input DLIS Files

DEFAULT PERFO\_017LUP FN:16 PRODUCER 15-Nov-2009 18:06 3349.1 M 3224.0 M

### Output DLIS Files

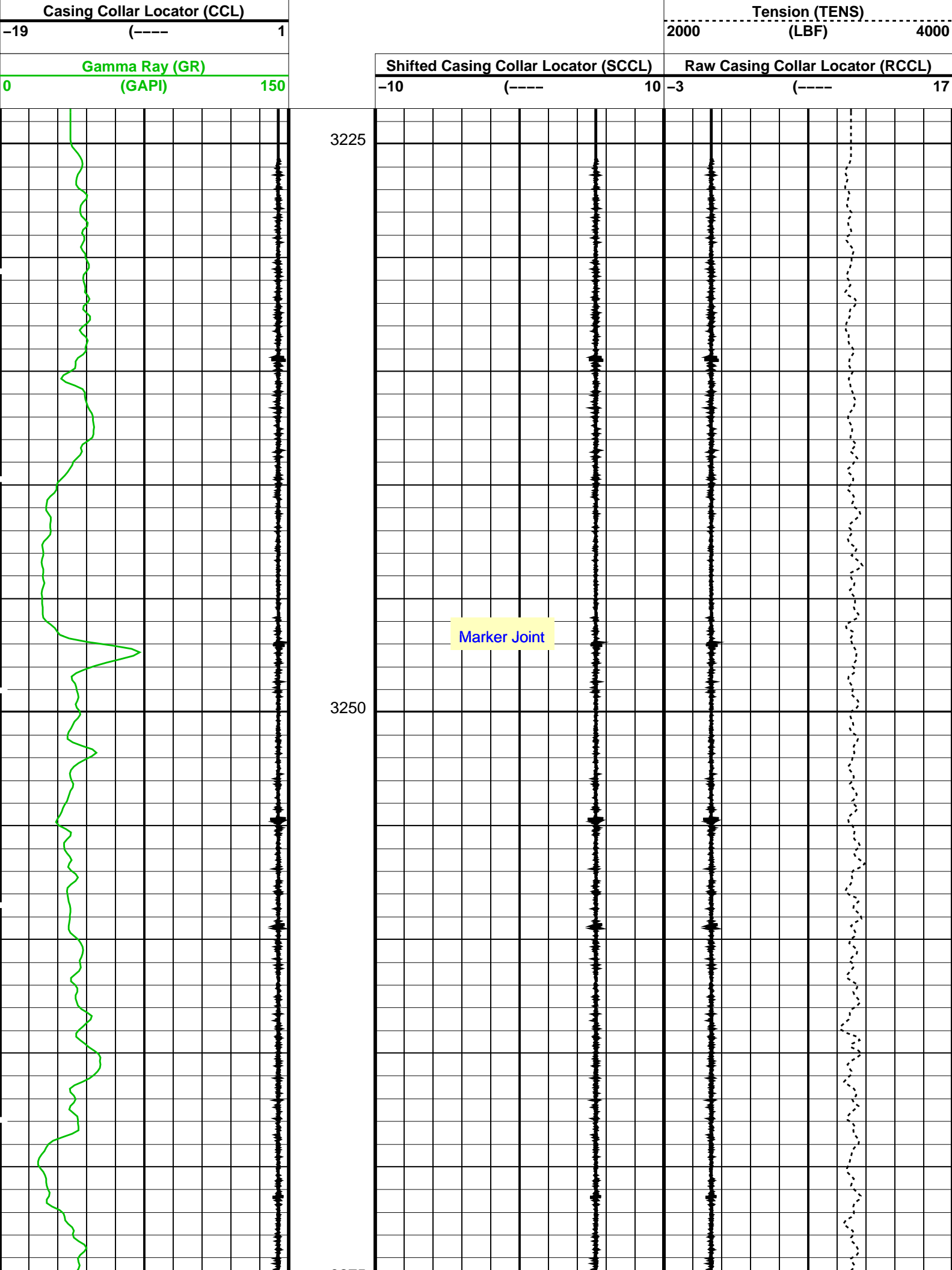
DEFAULT PERFO\_019PUP FN:18 PRODUCER 15-Nov-2009 18:25 3349.6 M 3223.3 M

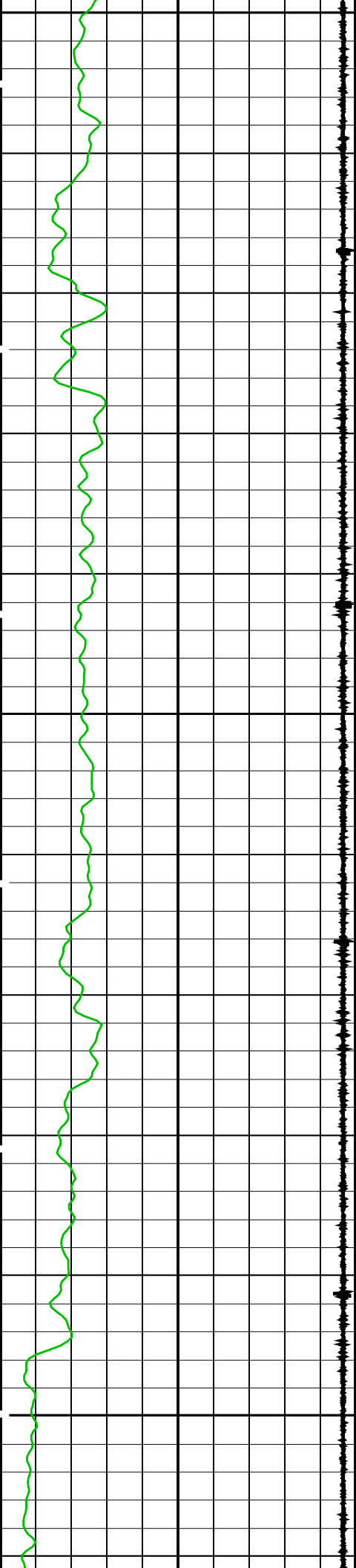
### OP System Version: 17C0-154

SHM\_GUN 17C0-154 PGGT-D 17C0-154

#### PIP SUMMARY

Time Mark Every 60 S

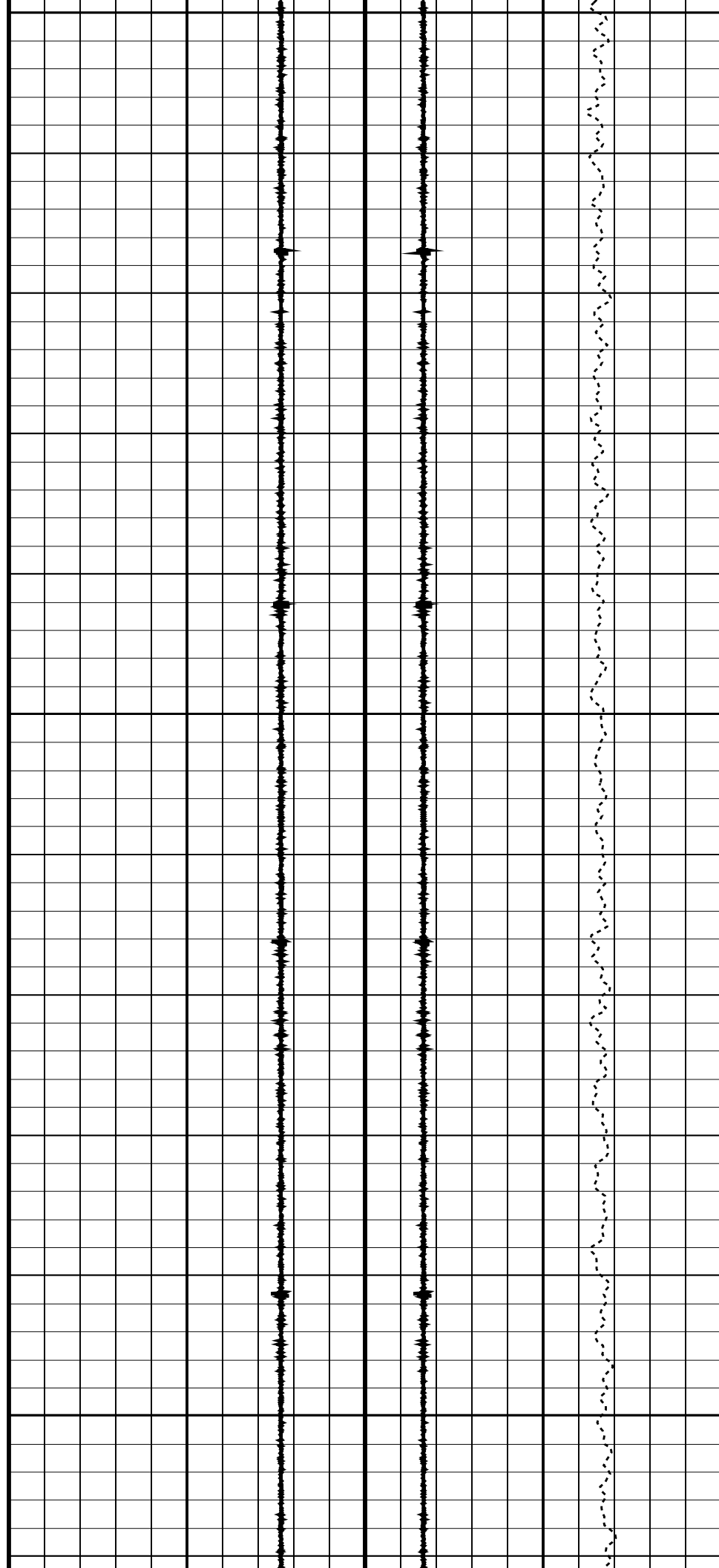


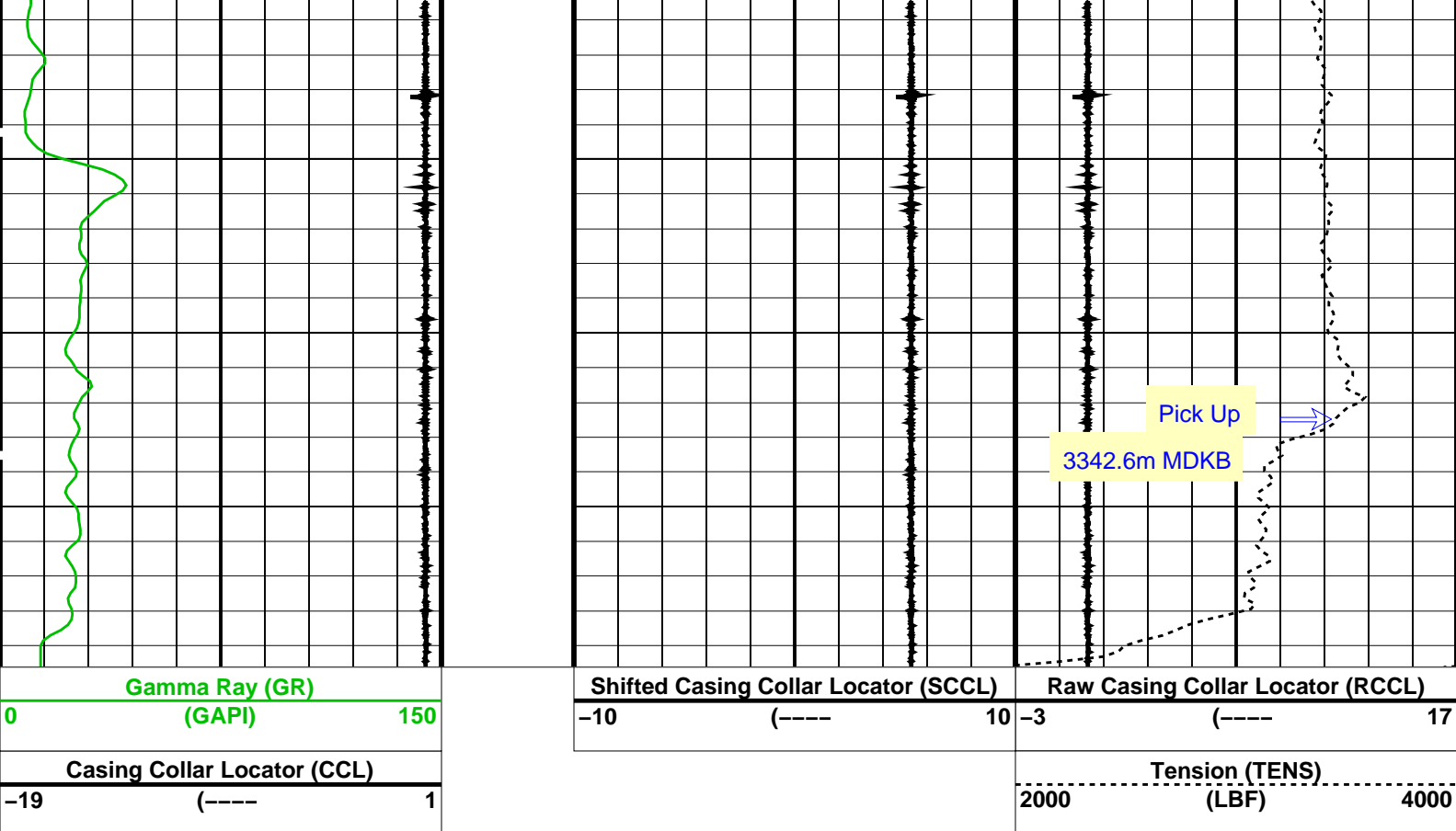


3275

3300

3325





#### PIP SUMMARY

Time Mark Every 60 S

#### Parameters

DLIS Name	Description	Value
DO	System and Miscellaneous	0.4 M
PP	Depth Offset for Playback	NORMAL
	Playback Processing	

Format: PERFO Vertical Scale: 1:200 Graphics File Created: 15-Nov-2009 18:25

#### OP System Version: 17C0-154

SHM\_GUN 17C0-154 PGGT-D 17C0-154

#### Input DLIS Files

DEFAULT PERFO\_017LUP FN:16 PRODUCER 15-Nov-2009 18:06 3349.1 M 3224.0 M

#### Output DLIS Files

DEFAULT PERFO\_019PUP FN:18 PRODUCER 15-Nov-2009 18:25

Company: Esso Australia Pty Ltd

Schlumberger

Well: WKF W5A  
Field: West Kingfish  
Rig: 175  
Country: Australia

Junk Basket with 6" Gauge Ring  
Max-R Setting Record  
Perforation Record 15-Nov-2009

