

Company: Esso Australia Pty Ltd.

Well: A-5a  
Field: Bream A  
Rig: Crane / Prod 4  
Country: Australia

2 1/8" Powerjet MWPT Perforation Record  
7" Posiset Plug Setting Record  
Cement Dump Record

Rig: Crane / Prod 4  
Field: Bream A  
Location: Gippsland  
Well: A-5a  
Company: Esso Australia Pty Ltd.

LOCATION			
Gippsland		Elev.:	K.B. 32.82 m
Basin			G.L. -59.00 m
Bass Strait			D.F. 32.82 m
Permanent Datum:	M.S.L.	Elev.:	0.00 m
Log Measured From:	D.F.	32.82 m	above Perm. Datum
Drilling Measured From:	D.F.		
State: Victoria	Max. Well Deviation 58 deg	Longitude 147 46'15"E	Latitude 038 30'04"S

Logging Date	2-Nov-2009		
Run Number	1 through 5		
Depth Driller	2676 m		
Schlumberger Depth	2676 m		
Bottom Log Interval	2676 m		
Top Log Interval	2450 m		
Casing Fluid Type	Production Fluids		
Salinity			
Density			
Fluid Level	1208 m		
BIT/CASING/TUBING STRING			
Bit Size	8.000 in		
From	895.5 m		
To	2810 m		
Casing/Tubing Size	7.000 in		
Weight	29 lbm/ft		
Grade	L-80		
From	11.7 m		
To	2809 m		
Maximum Recorded Temperatures	98 degC		
Logger On Bottom	2-Nov-2009	4:52	
Unit Number	889	AUSL / PROD 4	
Recorded By	S Gilbert.		
Witnessed By	B White		

PVT DATA				Run 1
Oil Density				
Water Salinity				
Gas Gravity				
Bo				
Bw				
1/Bg				
Bubble Point Pressure				
Bubble Point Temperature				
Solution GOR				
Maximum Deviation				58 deg
CEMENTING DATA				
Primary/Squeeze				Primary
Casing String No				
Lead Cement Type				
Volume				
Density				
Water Loss				
Additives				
Tail Cement Type				
Volume				
Density				
Water Loss				
Additives				
Expected Cement Top				
Logging Date				
Run Number				
Depth Driller				
Schlumberger Depth				
Bottom Log Interval				
Top Log Interval				
Casing Fluid Type				
Salinity				
Density				
Fluid Level				
BIT/CASING/TUBING STRING				
Bit Size				
From				
To				
Casing/Tubing Size				
Weight				
Grade				
From				
To				
Maximum Recorded Temperatures				
Logger On Bottom				
Unit Number				
Recorded By				
Witnessed By				

## DEPTH SUMMARY LISTING

Date Created: 22-OCT-2009 3:04:54

### Depth System Equipment

Depth Measuring Device		Tension Device		Logging Cable	
Type:	IDW-EB	Type:	PSDS/OSDS	Type:	2-32ZT
Serial Number:	6373	Serial Number:	325357	Serial Number:	207505
Calibration Date:	13-Oct-2009	Calibration Date:	21-Oct-2009	Length:	6421 M
Calibrator Serial Number:	30	Calibrator Serial Number:	854	<div>Conveyance Method: Wireline</div> <div>Rig Type: Rigless</div>	
Calibration Cable Type:	2-32ZT	Number of Calibration Points:	9		
Wheel Correction 1:	0	Calibration RMS:	454		
Wheel Correction 2:	-2	Calibration Peak Error:	281		

### Depth Control Parameters

Log Sequence:	Subsequent Trip To the Well
Reference Log Name:	
Reference Log Run Number:	
Reference Log Date:	22-Oct-2008
Subsequent Trip Down Log Correction:	

### Depth Control Remarks

1. IDW used as primary depth control
2. Z Chart used as secondary depth control.
3. Full pressure gear used in rig up , surface Zero check incorrect.
4.
5.
6.

#### DISCLAIMER

THE USE OF AND RELIANCE UPON THIS RECORDED-DATA BY THE HEREIN NAMED COMPANY (AND ANY OF ITS AFFILIATES, PARTNERS, REPRESENTATIVES, AGENTS, CONSULTANTS AND EMPLOYEES) IS SUBJECT TO THE TERMS AND CONDITIONS AGREED UPON BETWEEN SCHLUMBERGER AND THE COMPANY, INCLUDING: (a) RESTRICTIONS ON USE OF THE RECORDED-DATA; (b) DISCLAIMERS AND WAIVERS OF WARRANTIES AND REPRESENTATIONS REGARDING COMPANY'S USE OF AND RELIANCE UPON THE RECORDED-DATA; AND (c) CUSTOMER'S FULL AND SOLE RESPONSIBILITY FOR ANY INFERENCE DRAWN OR DECISION MADE IN CONNECTION WITH THE USE OF THIS RECORDED-DATA.

OTHER SERVICES1
OS1: None

REMARKS: RUN NUMBER 1
Log correlated to ExxonMobil composite supplied with logging program.
Maximum well deviation = 58deg @ 2773m MDKB.
Objectives: Perforate the well using 2 1/8" Powerjet gun's over the interval 2656 m to 2658 m MDKB.
Run 2.13" Dummy Plug to ensure access for Posiset Plug.
Set 7" 29 lb/ft Posiset plug with Top of Seal at 2660m MDKB and then dump approx 1m of cement on top .
HUD Tagged with Dummy Plug @2676m MDKB

Perforation Zone = 2656 m to 2658 m MDKB
Top Shot @ 2656 m MDKB
CCL to Top Shot = 3.6 m
CCL Stop Depth = 2652.4 m MDKB
7" Posiset Plug top of Seal Set @ 2660m MDKB
CCL to Top of Seal = 7 m
CCL stop Depth = 2653m MDKB
1m of Cement dumped in 1 Run.

Crew : J Annear , A Pratt , G Martin
--------------------------------------

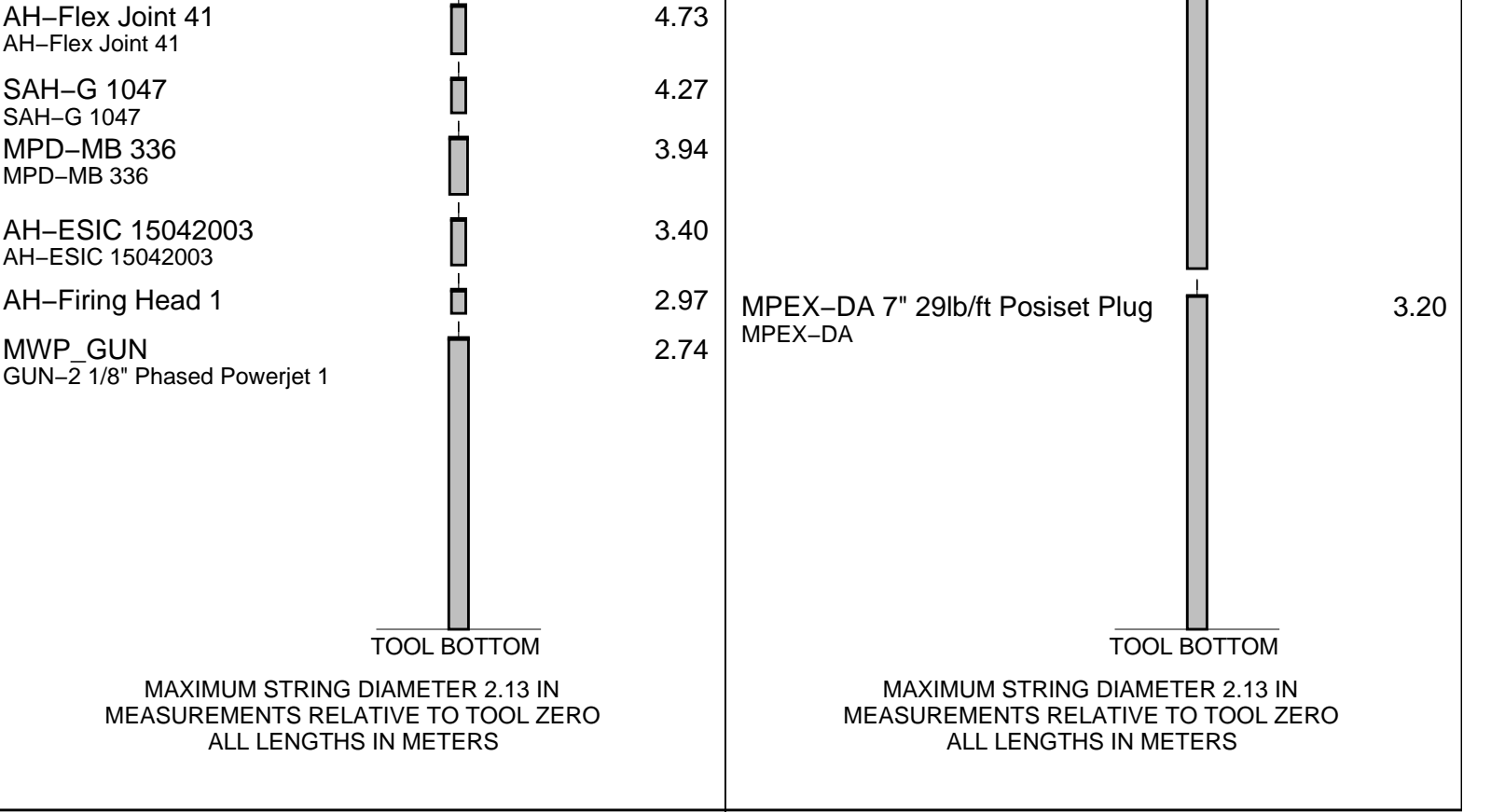
SERVICE ORDER #: B297-00018 PROGRAM VERSION: 17C0-154 FLUID LEVEL: 1208 m		
---	--	--

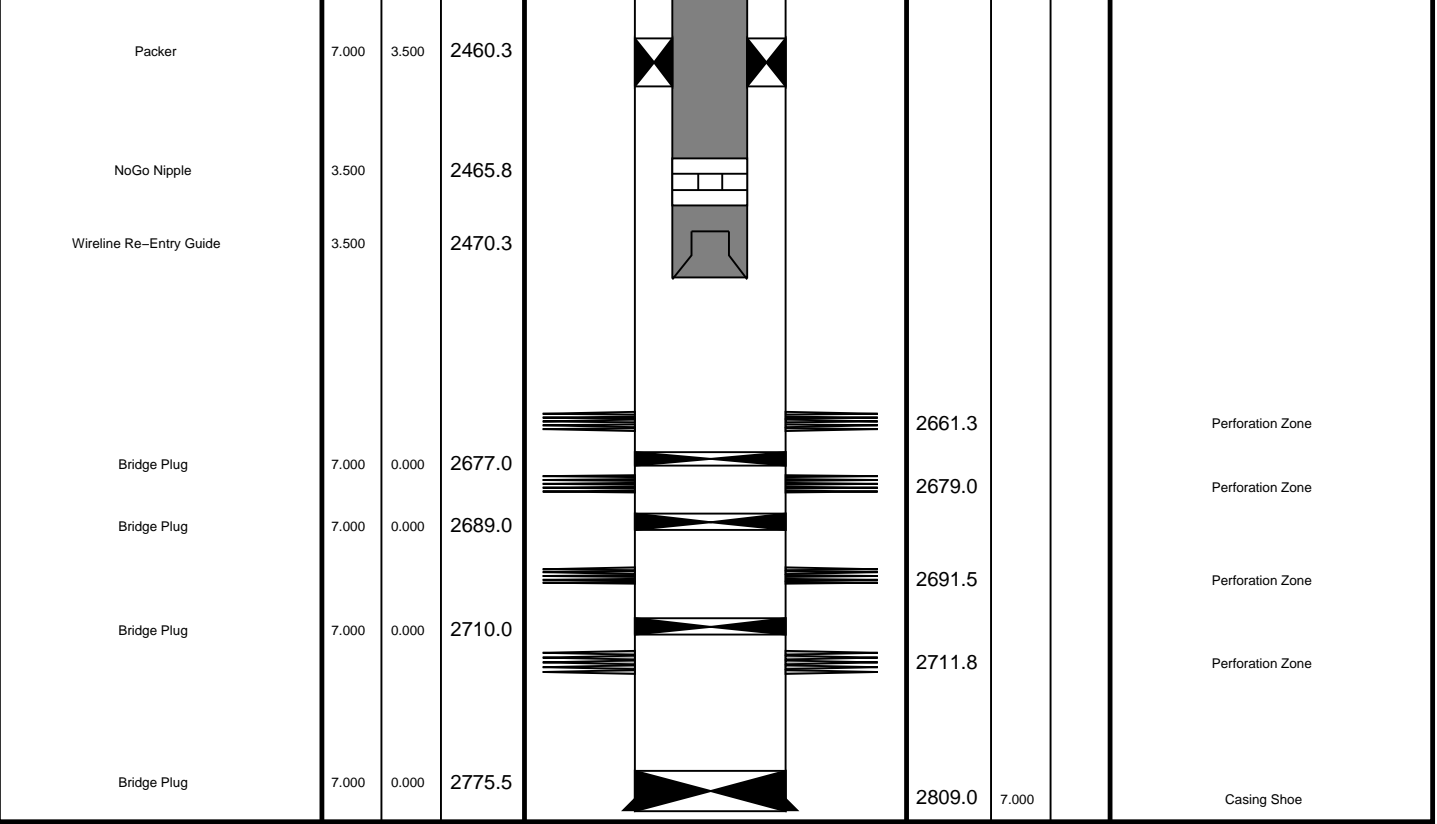
LOGGED INTERVAL	START	STOP	LOGGED INTERVAL	START	STOP

[illegible]

MWPM-AA	SURFACE EQUIPMENT	MPBM	SURFACE EQUIPMENT
---------	-------------------	------	-------------------

DOWNHOLE EQUIPMENT				DOWNHOLE EQUIPMENT			
AH-SWBS-B 789 AH-SWBS-B 789			12.39	AH-SWBS-B 785 AH-SWBS-B 785			13.84
AH-SWBS-B 788 AH-SWBS-B 788			11.70	AH-YYY 786 AH-YYY 786			13.15
AH-SWBS-B 787 AH-SWBS-B 787			11.01	AH-SWBS-B 787 AH-SWBS-B 787			12.47
AH-SWBS-B 786 AH-SWBS-B 786			10.33	AH-YYY 788 AH-YYY 788			11.78
AH-SWBS-B 785 AH-SWBS-B 785			9.64	AH-SWBS-B 789 AH-SWBS-B 789			11.10
MH-SWHS-A 759 MH-SWHS-A 759			8.96	MH-SWHS-A 759 MH-SWHS-A 759			10.41
AH-124 7002			8.63	CCL-PCCL 08055 CCL-PCCL 8055			10.07
MWGT-AA 24			8.53	MPSU-CA 1102 MPSU-CA 1102			9.61
MWPG-AA 24	MWPG GR	— 2.41					
MWGH-AA 24							
MWPT-CA 11			7.55				
MWPH-AA 94							
MWPS-AA 11							
	CCL SMWP Pres SMWP Temp Tension	— TOOL ZERO			CCL Cable Cur Head Volt Tension	— TOOL ZERO	





# Job Events Summary

MAXIS Field Log

## Schlumberger Job Event Summary

Time	Elapsed Time	Depth (M)	File
------	--------------	-----------	------

Log Pass (up)	2-Nov-2009 4:24	000:04	2665.8 - 2637.0	PERFO_012LUP
Log Pass (up)	2-Nov-2009 4:29	000:21	2666.2 - 2631.3	PERFO_013LUP
Station Log	2-Nov-2009 4:32	000:14	2652.4	PERFO_014LTP
Log Pass (up)	2-Nov-2009 18:36	000:13	2678.9 - 2443.1	PSP_024LUP
Log Pass (up)	2-Nov-2009 21:19	000:08	2562.0 - 2468.4	CCL_036LUP
Simulated Log	2-Nov-2009 21:42	000:41		CCL_037LUP
Log Pass (up)	2-Nov-2009 22:23	000:06	2653.0 - 2595.5	CCL_038LUP
Log Pass (up)	3-Nov-2009 0:34	000:08	2651.2 - 2595.1	PERFO_043LUP
Log Pass (up)	3-Nov-2009 2:12	000:07	2650.7 - 2599.8	PERFO_046LUP



Cement Dump Pass

MAXIS Field Log

Output DLIS Files

DEFAULT      PERFO\_046LUP      FN:45    PRODUCER    03-Nov-2009 02:12    2650.7 M      2599.8 M

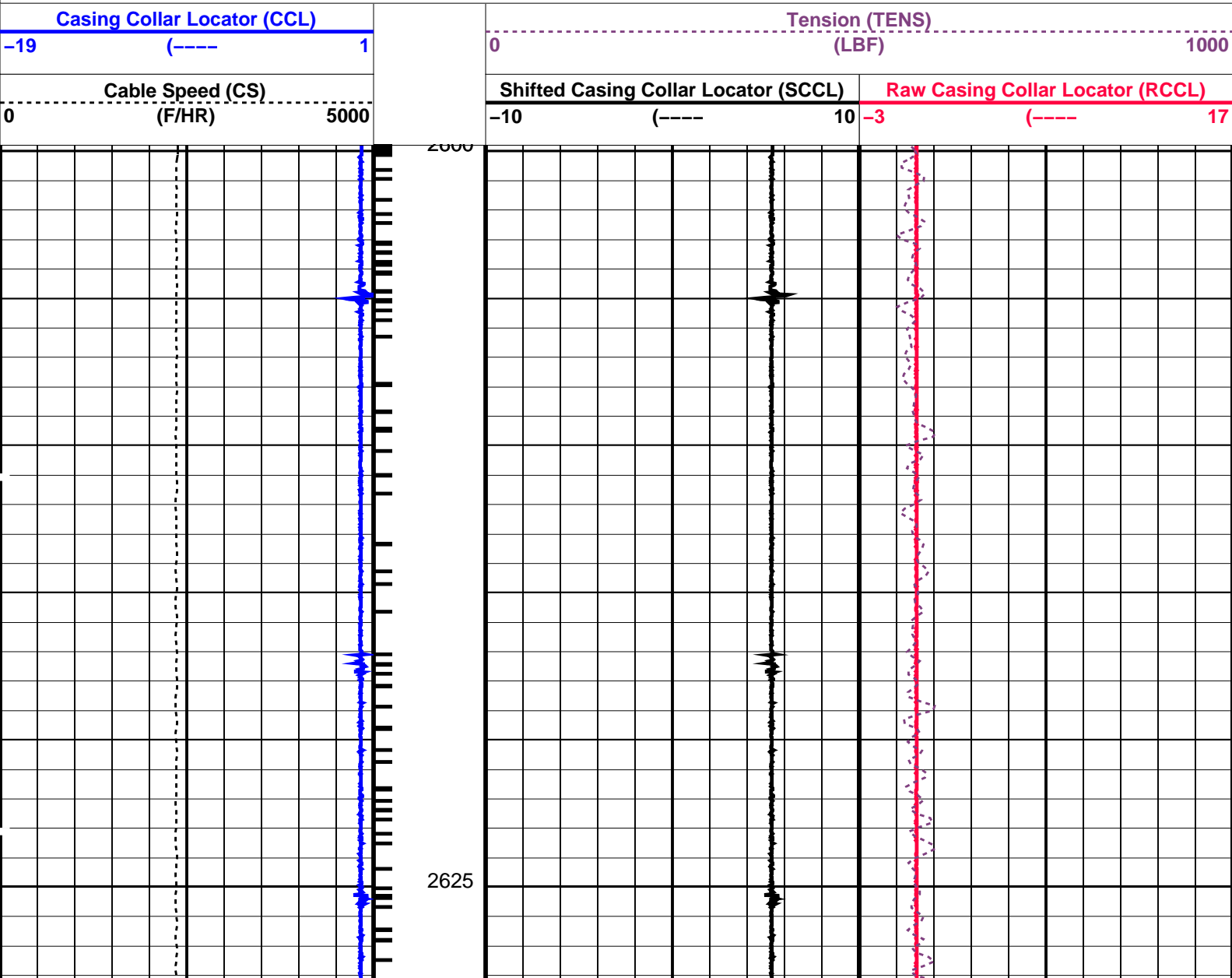
OP System Version: 17C0-154

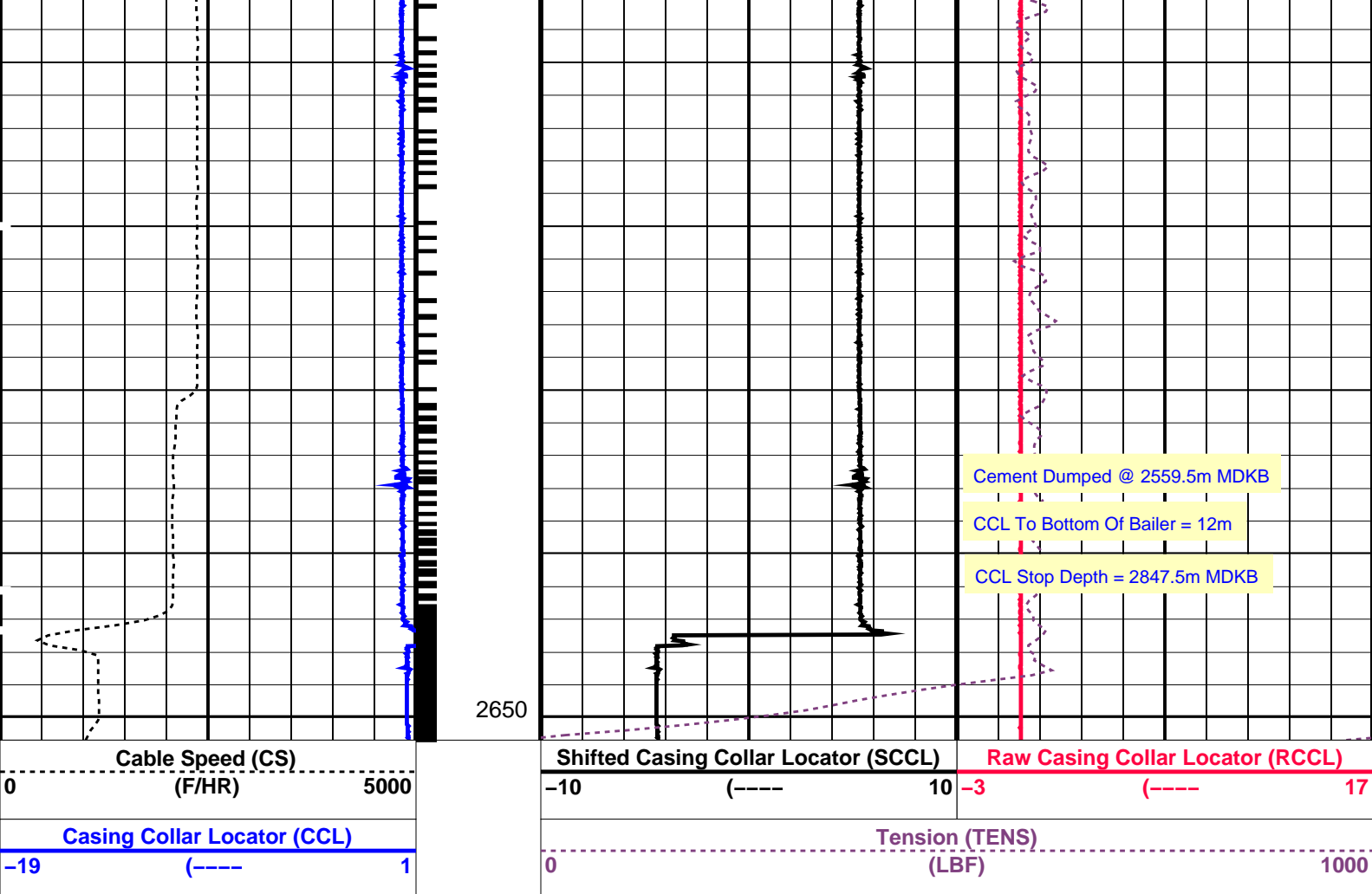
SHM\_GUN      17C0-154      CCL-L      17C0-154

PIP SUMMARY

└─ Casing Collars

Time Mark Every 60 S





#### PIP SUMMARY

Time Mark Every 60 S

#### Parameters

DLIS Name	Description	Value
CCL-L: Casing Collar Locator		
CCLD	CCL reset delay	12 IN
CCLT	CCL Detection Level	0.3 V

Format: PERFO\_1 Vertical Scale: 1:200 Graphics File Created: 03-Nov-2009 02:12

#### OP System Version: 17C0-154

SHM\_GUN 17C0-154 CCL-L 17C0-154

#### Output DLIS Files

DEFAULT PERFO\_046LUP FN:45 PRODUCER 03-Nov-2009 02:12

Schlumberger

Water Dump Pass

Output DLIS Files						
DEFAULT	PERFO_043LUP	FN:42	PRODUCER	03-Nov-2009 00:34	2651.2 M	2595.1 M

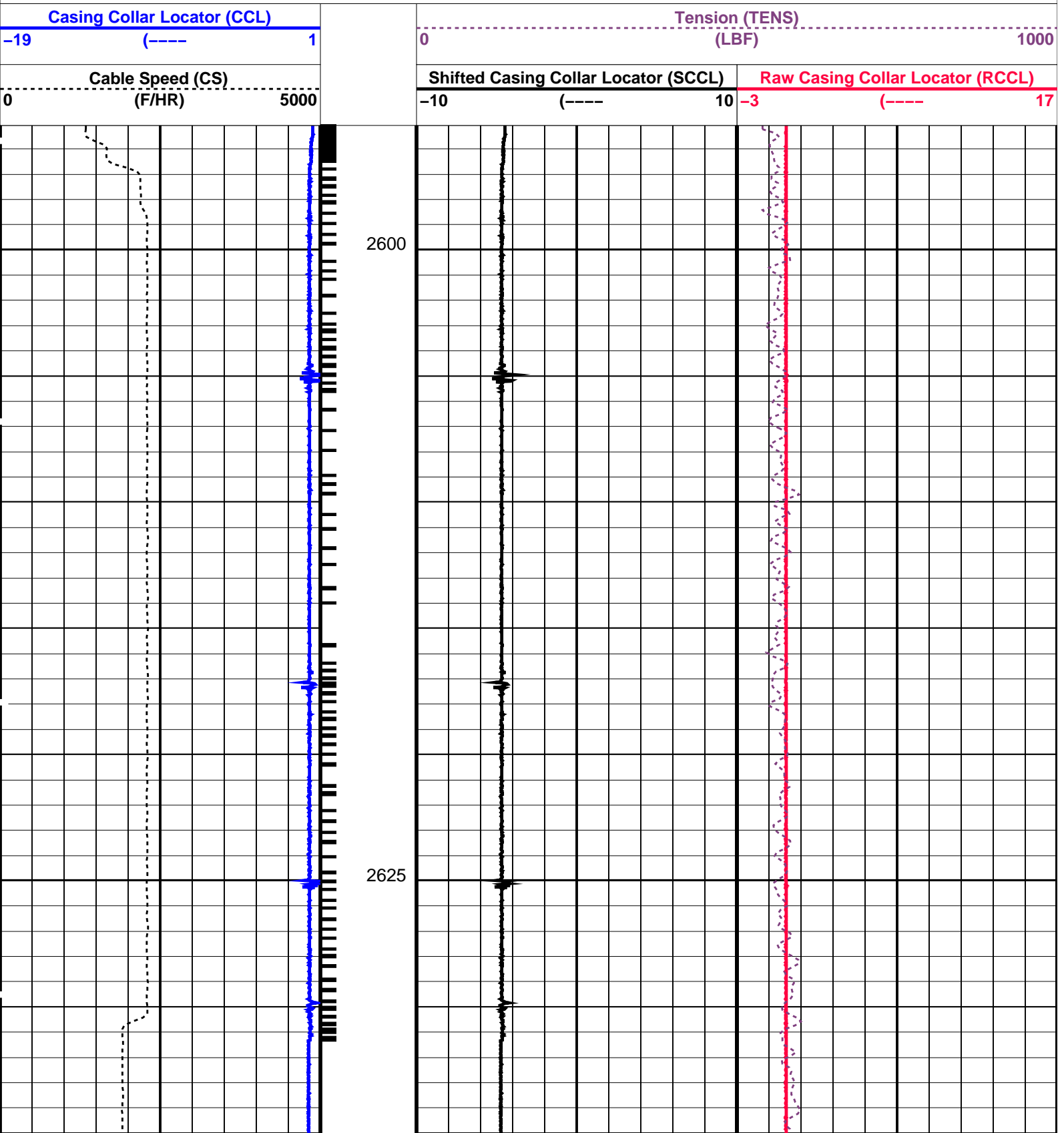
2595.1 M

OP System Version: 17C0-154			
SHM_GUN	17C0-154	CCL-L	17C0-154

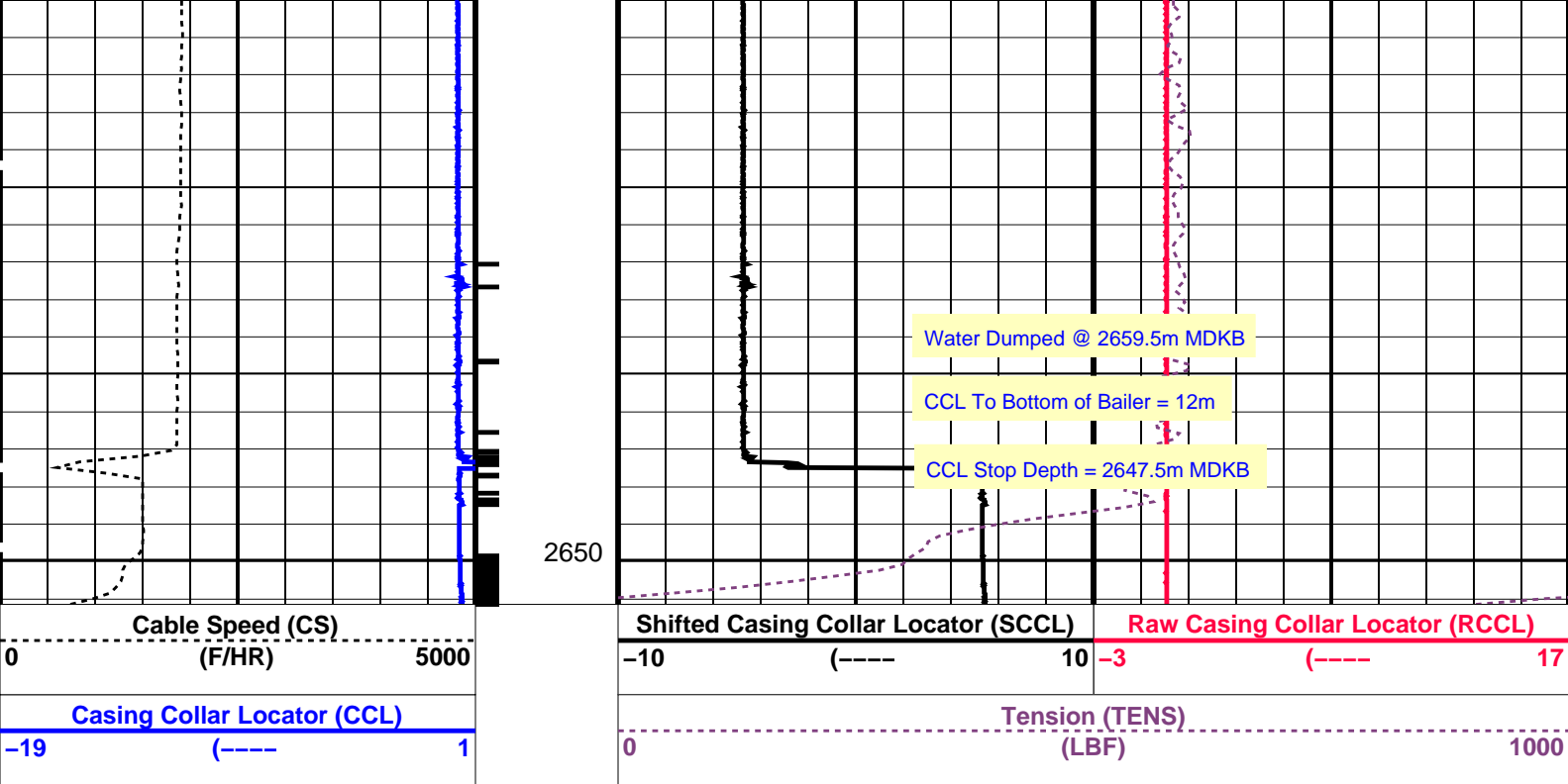
17C0-154

PIP SUMMARY	
Time Mark Every 60 S	└─ Casing Collars

 Time Mark Every 60 S







### PIP SUMMARY

← Casing Collars

Time Mark Every 60 S

### Parameters

DLIS Name	Description	Value
CCLD	CCL-L: Casing Collar Locator	12 IN
CCLT	CCL reset delay	0.3 V
	CCL Detection Level	

Format: PERFO\_1 Vertical Scale: 1:200 Graphics File Created: 03-Nov-2009 00:34

### OP System Version: 17C0-154

SHM\_GUN 17C0-154 CCL-L 17C0-154

### Output DLIS Files

DEFAULT PERFO\_043LUP FN:42 PRODUCER 03-Nov-2009 00:34

**Schlumberger**

Log Away From Plug Setting

MAXIS Field Log

### Output DLIS Files

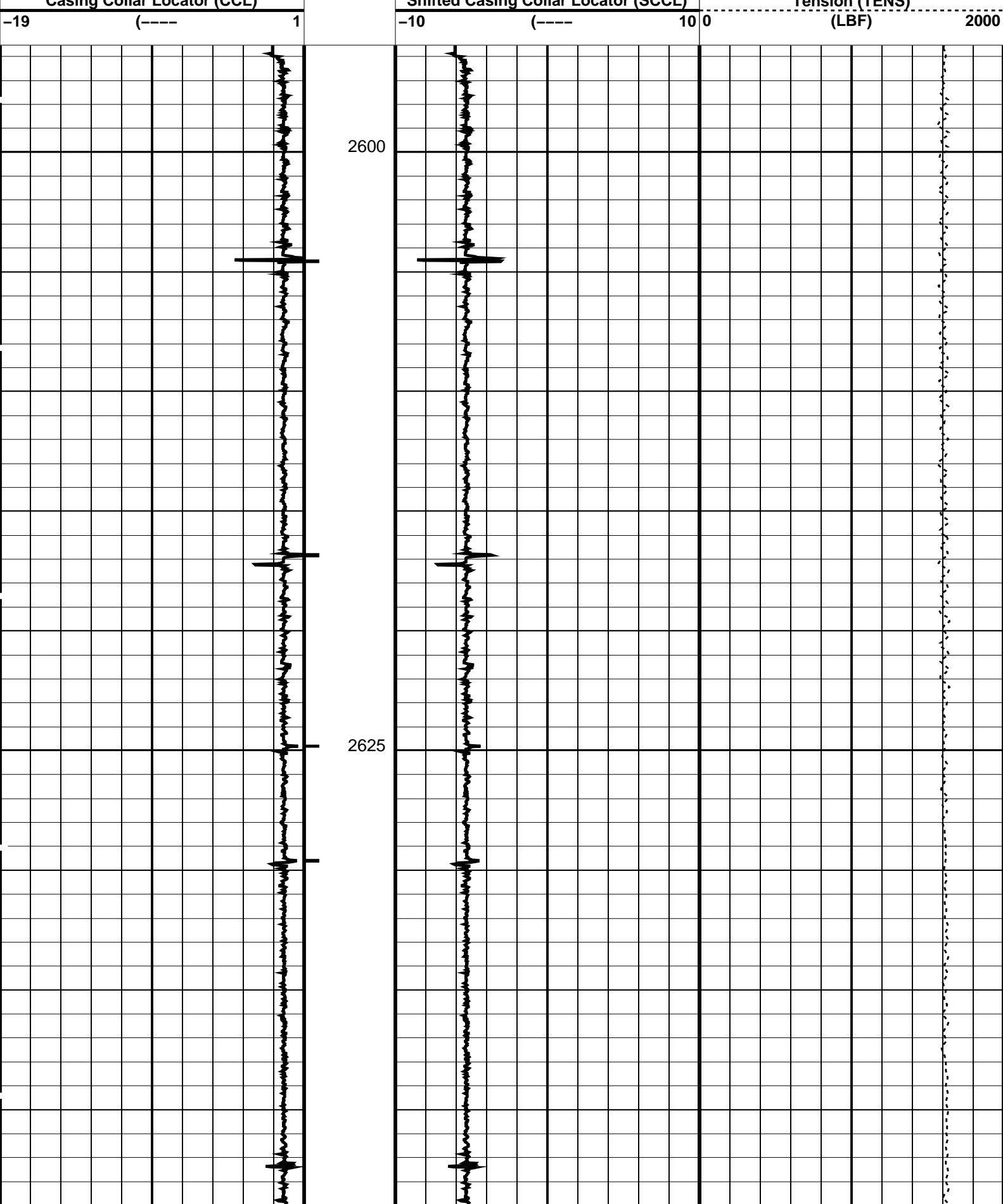
DEFAULT CCL\_038LUP FN:37 PRODUCER 02-Nov-2009 22:23 2653.0 M 2595.5 M

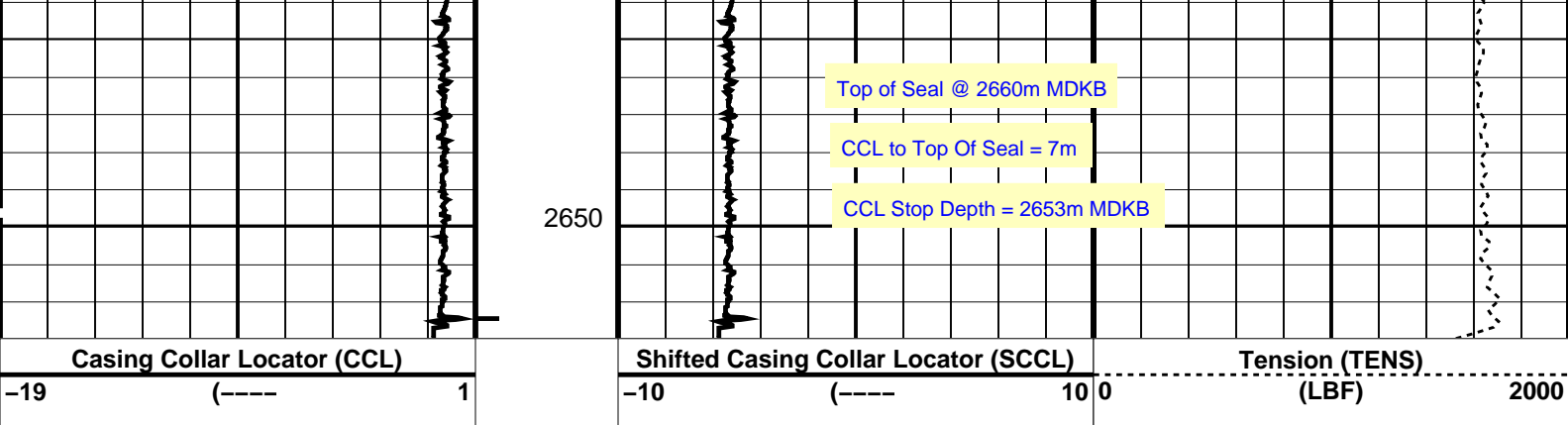
### OP System Version: 17C0-154

PIP SUMMARY

Time Mark Every 60 S

Casing Collars






PIP SUMMARY

Time Mark Every 60 S

Parameters		
DLIS Name	Description	Value
CCLD	CCL-PCCL: Casing Collar Locator	12 IN
CCLT	CCL reset delay	0.3 V
CCLT	CCL Detection Level	
Format: PERFO Vertical Scale: 1:200		Graphics File Created: 02-Nov-2009 22:23

OP System Version: 17C0-154			
MPEX-DA	17C0-154	MPSU-CA	17C0-154
CCL-PCCL	17C0-154		

Output DLIS Files			
DEFAULT	CCL_038LUP	FN:37	PRODUCER 02-Nov-2009 22:23



7" Posiset Plug Setting Record

Top Of Seal @ 2660m MDKB

MAXIS Field Log

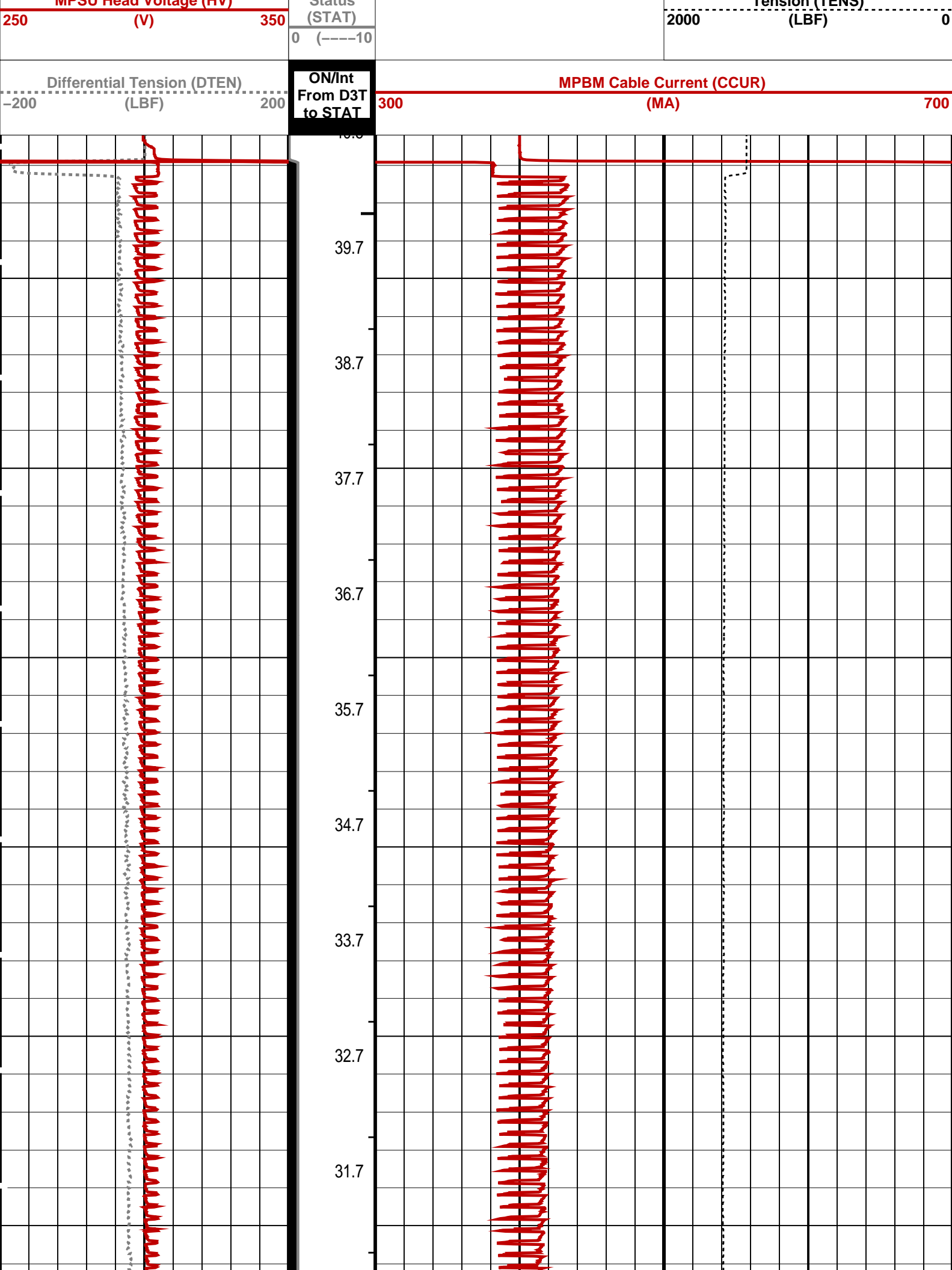
Output DLIS Files			
DEFAULT	CCL_037LUP	FN:36	PRODUCER 02-Nov-2009 21:42

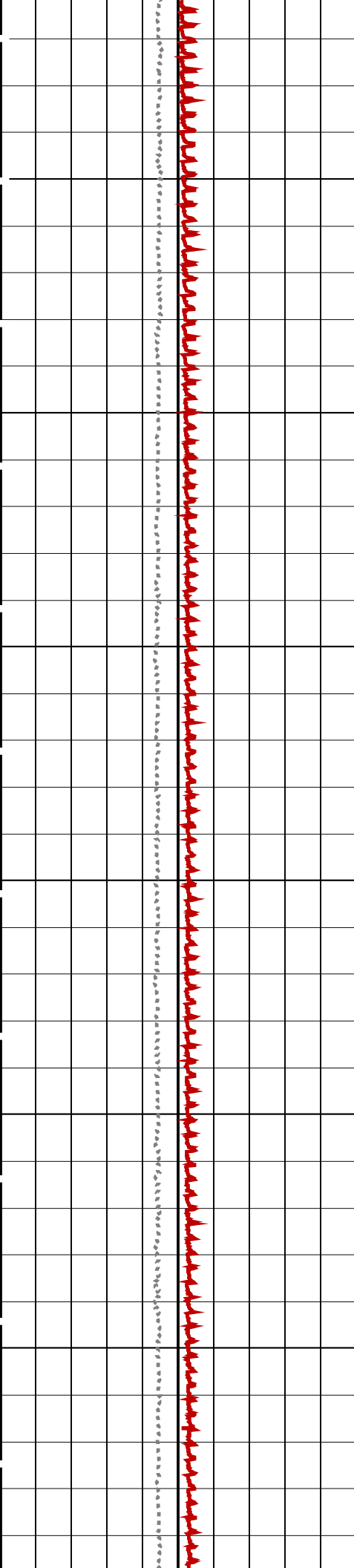
OP System Version: 17C0-154			
MPEX-DA	17C0-154	MPSU-CA	17C0-154
CCL-PCCL	17C0-154		

PIP SUMMARY

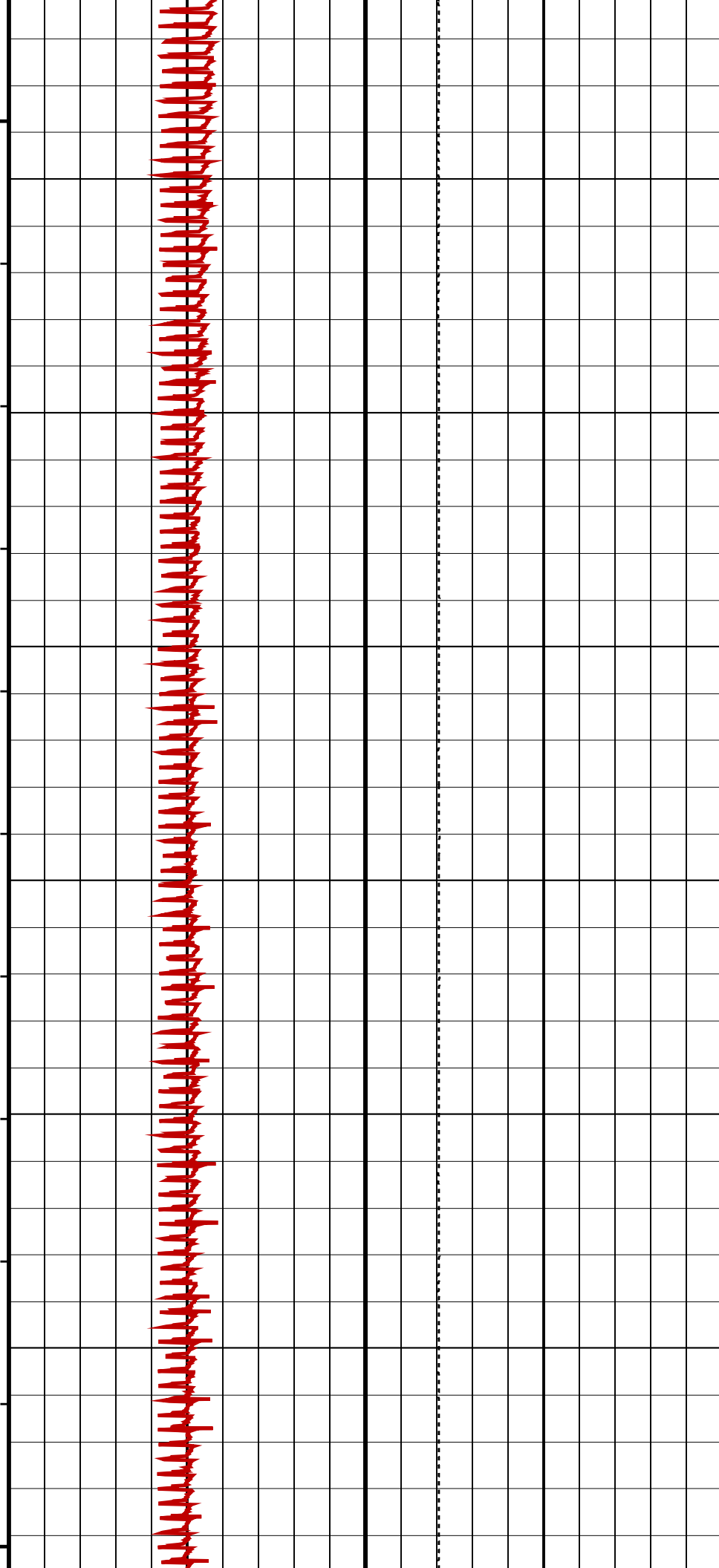
Time Mark Every 60 S

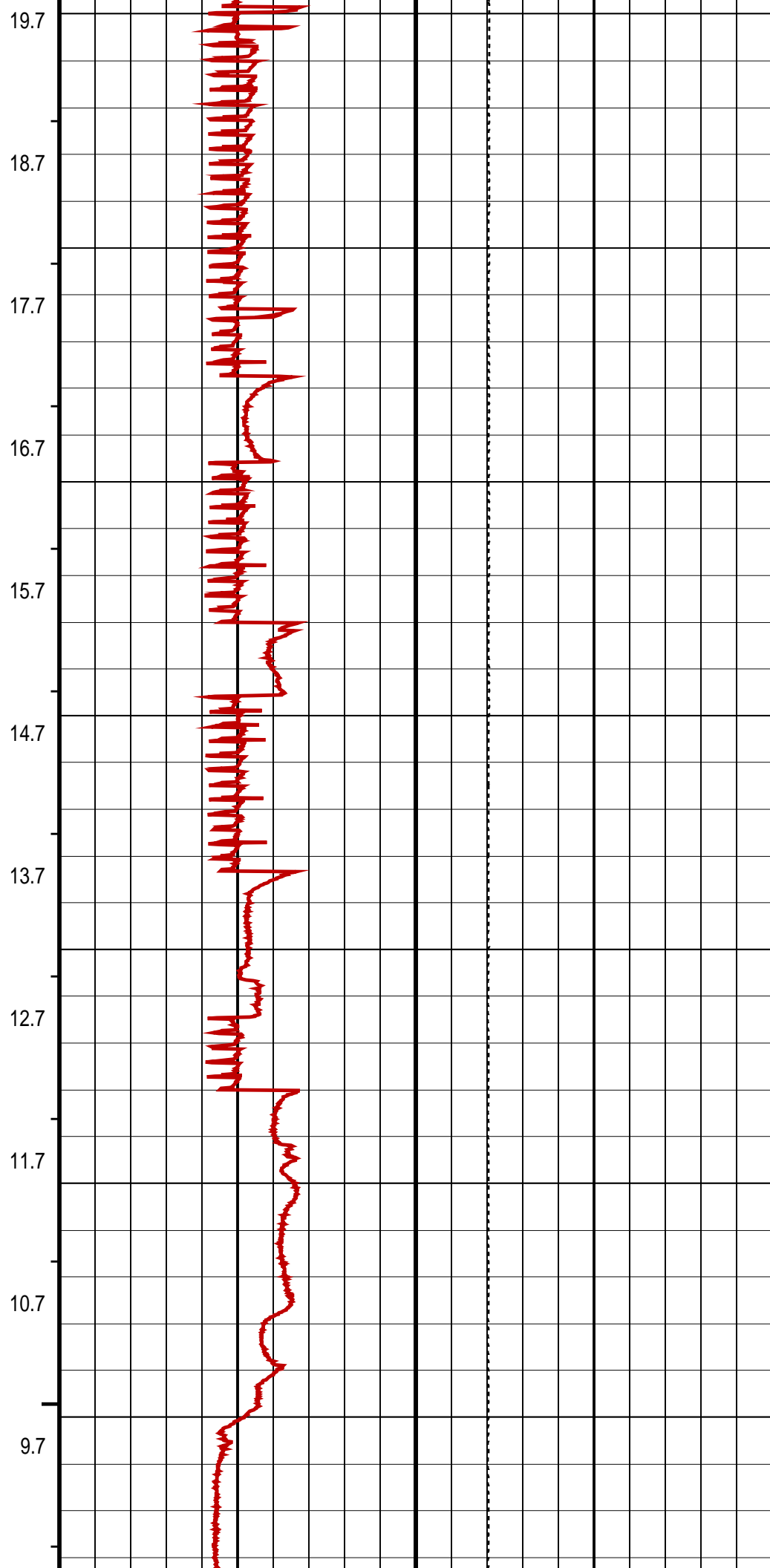
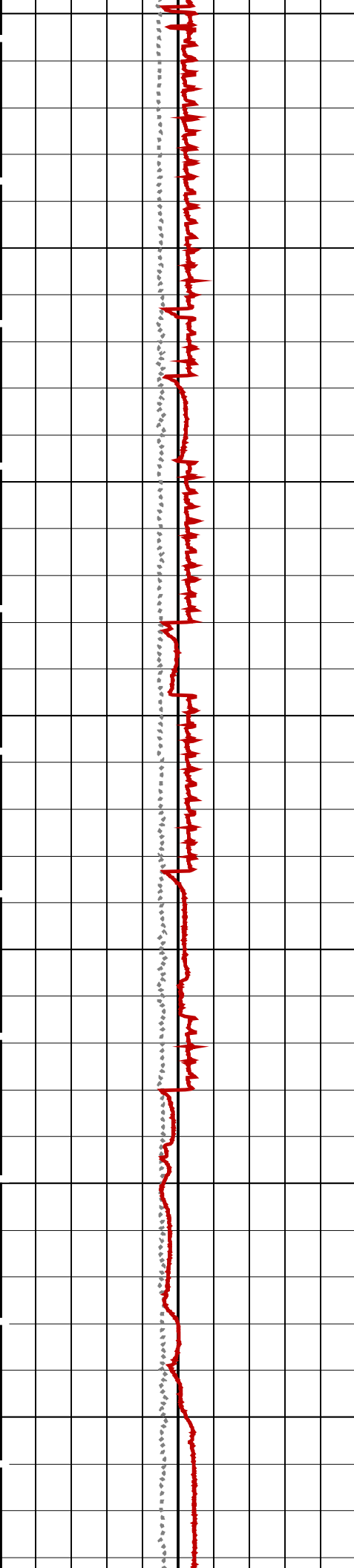
	RUN Time (RTIM) (MN)	
MPSU Head Voltage (HV)	MPSU Run Status	

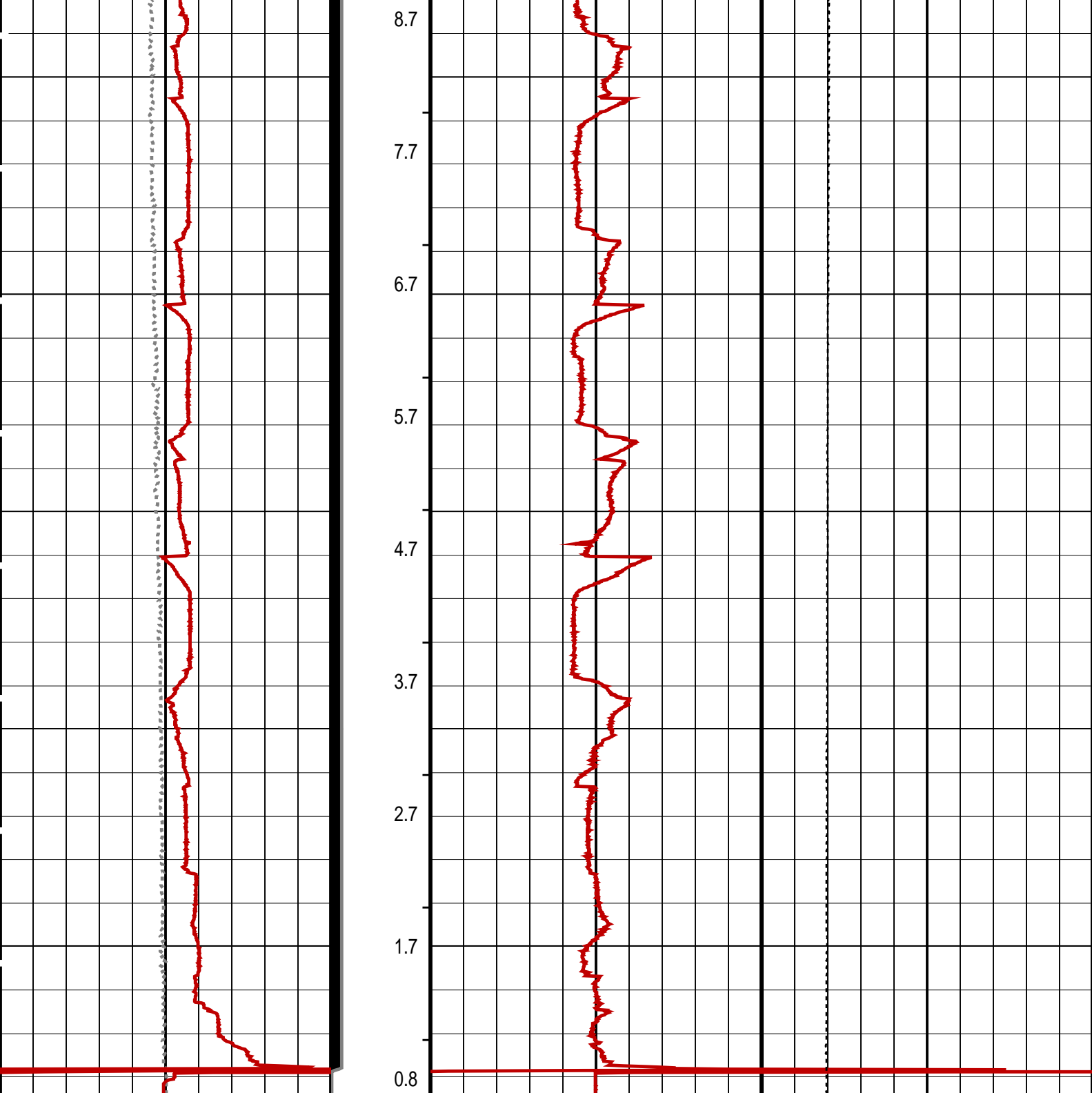




30.7  
29.7  
28.7  
27.7  
26.7  
25.7  
24.7  
23.7  
22.7  
21.7  
20.7







Differential Tension (DTEN) (LBF)	ON/Int From D3T to STAT	MPBM Cable Current (CCUR) (MA)
-200 200	300 700	
MPSU Head Voltage (HV) (V)	MPSU Run Status (STAT)	Tension (TENS) (LBF)
250 350	0 (----10)	2000 0
RUN Time (RTIM) (MN)		

PIP SUMMARY

- ↵ MPSU Run Time Every 1 MN
- ➡ MPSU Run Time Every 10 MN

Time Mark Every 60 S

## Value

IPUMP	MPSU-CA: MECHANICAL PLUGBACK SETTING UNIT Intensifier Pump	TRUE
-------	---	------

Format: MPBT      Vertical Scale: 1:600      Graphics File Created: 02-Nov-2009 21:42

**OP System Version: 17C0-154**

MPEX-DA	17C0-154	MPSU-CA	17C0-154
CCL-PCCL	17C0-154		

## Output DLIS Files

DEFAULT	CCL_037LUP	FN:36	PRODUCER	02-Nov-2009 21:42
---------	------------	-------	----------	-------------------



## Plug Correlation Pass

MAXIS Field Log

## Output DLIS Files

DEFAULT	CCL_036LUP	FN:35	PRODUCER	02-Nov-2009 21:19	2562.0 M	2468.4 M
---------	------------	-------	----------	-------------------	----------	----------

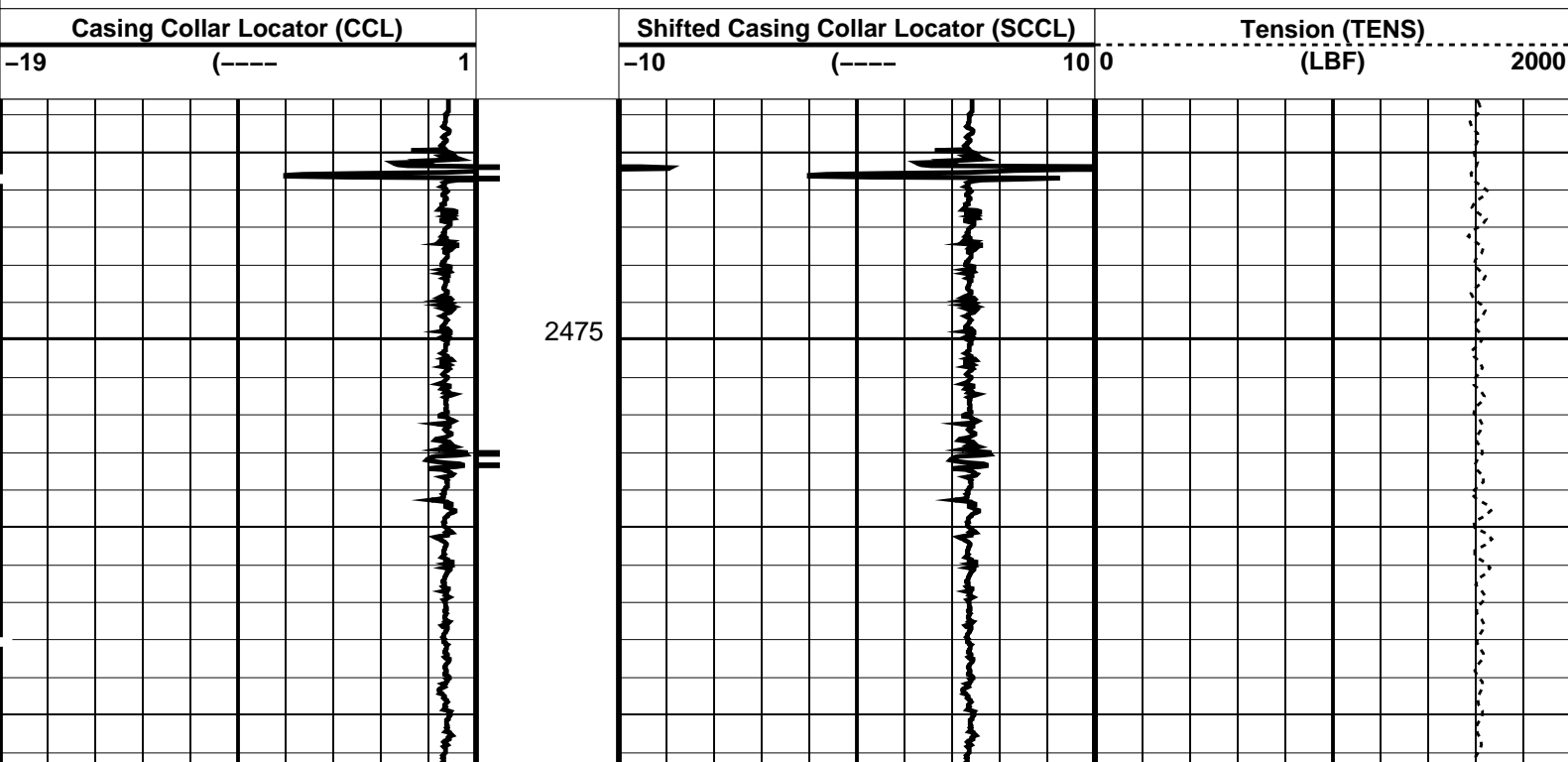
**OP System Version: 17C0-154**

MPEX-DA	17C0-154	MPSU-CA	17C0-154
CCL-PCCL	17C0-154		

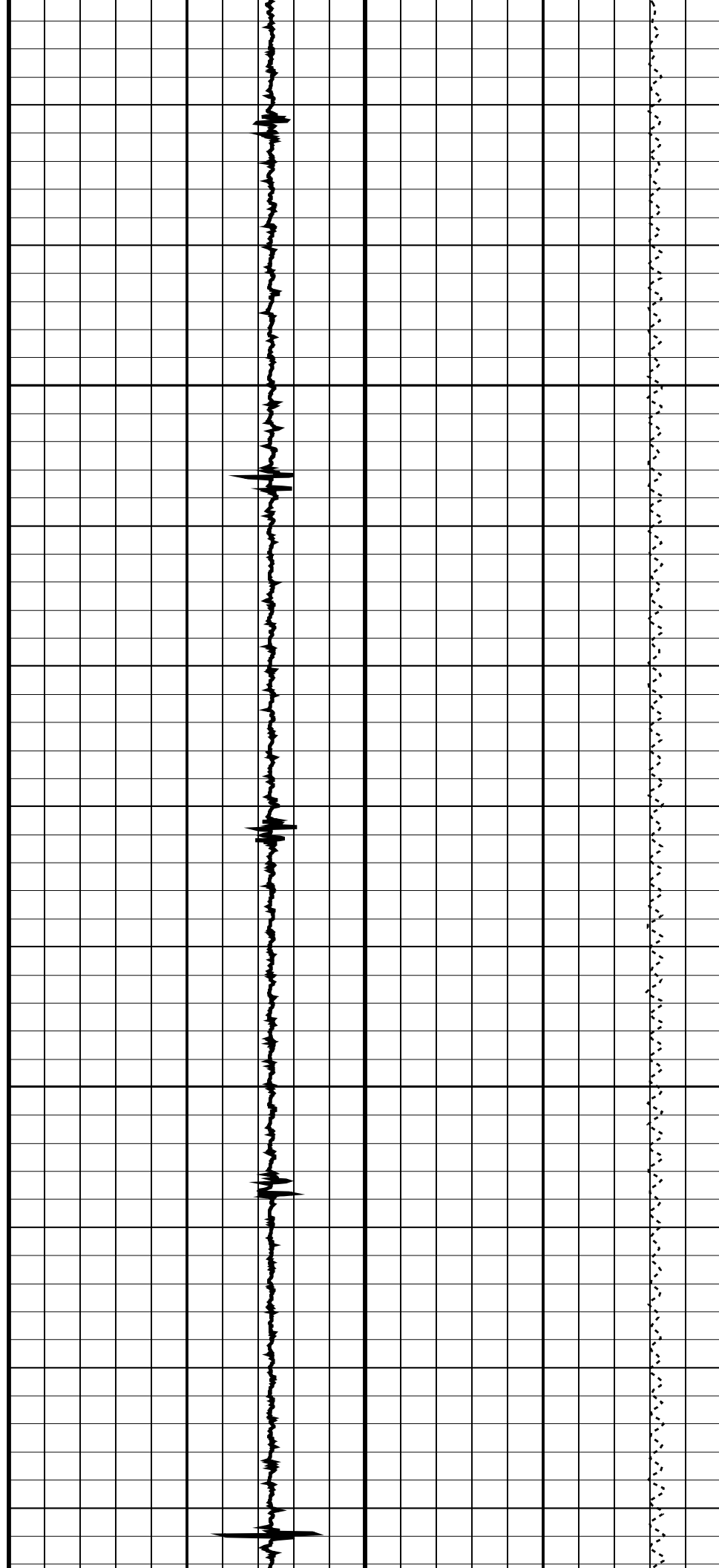
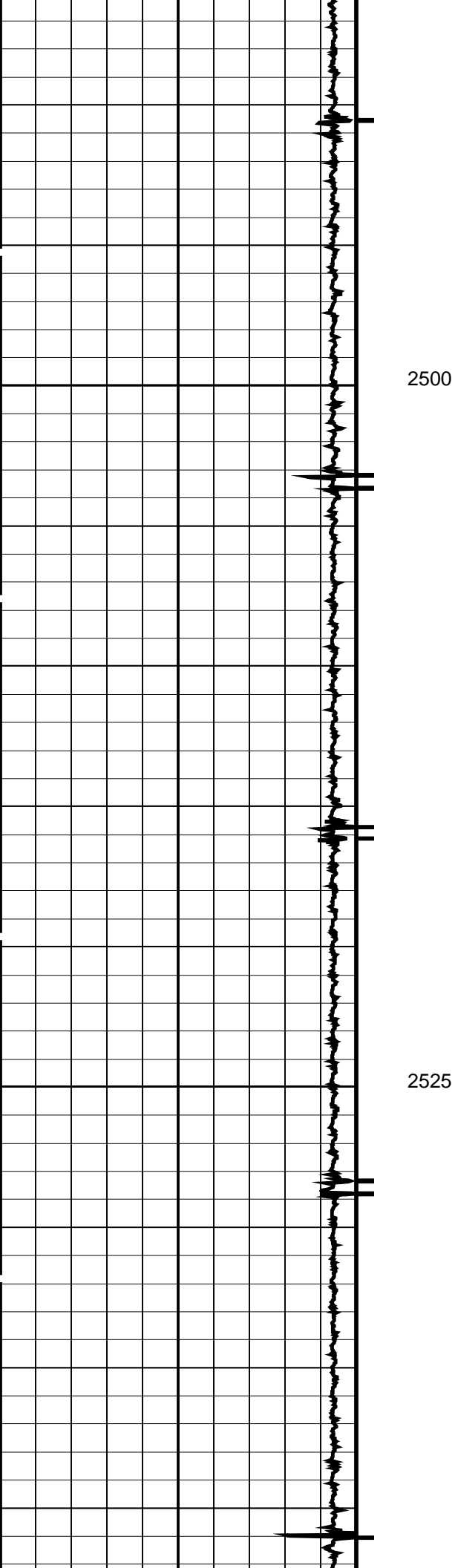
## PIP SUMMARY

## └─ Casing Collars

**Time Mark Every 60 S**









# Output DLIS Files

DEFAULT PSP\_026PUP FN:25 PRODUCER 02-Nov-2009 18:51 2678.4 M 2440.1 M

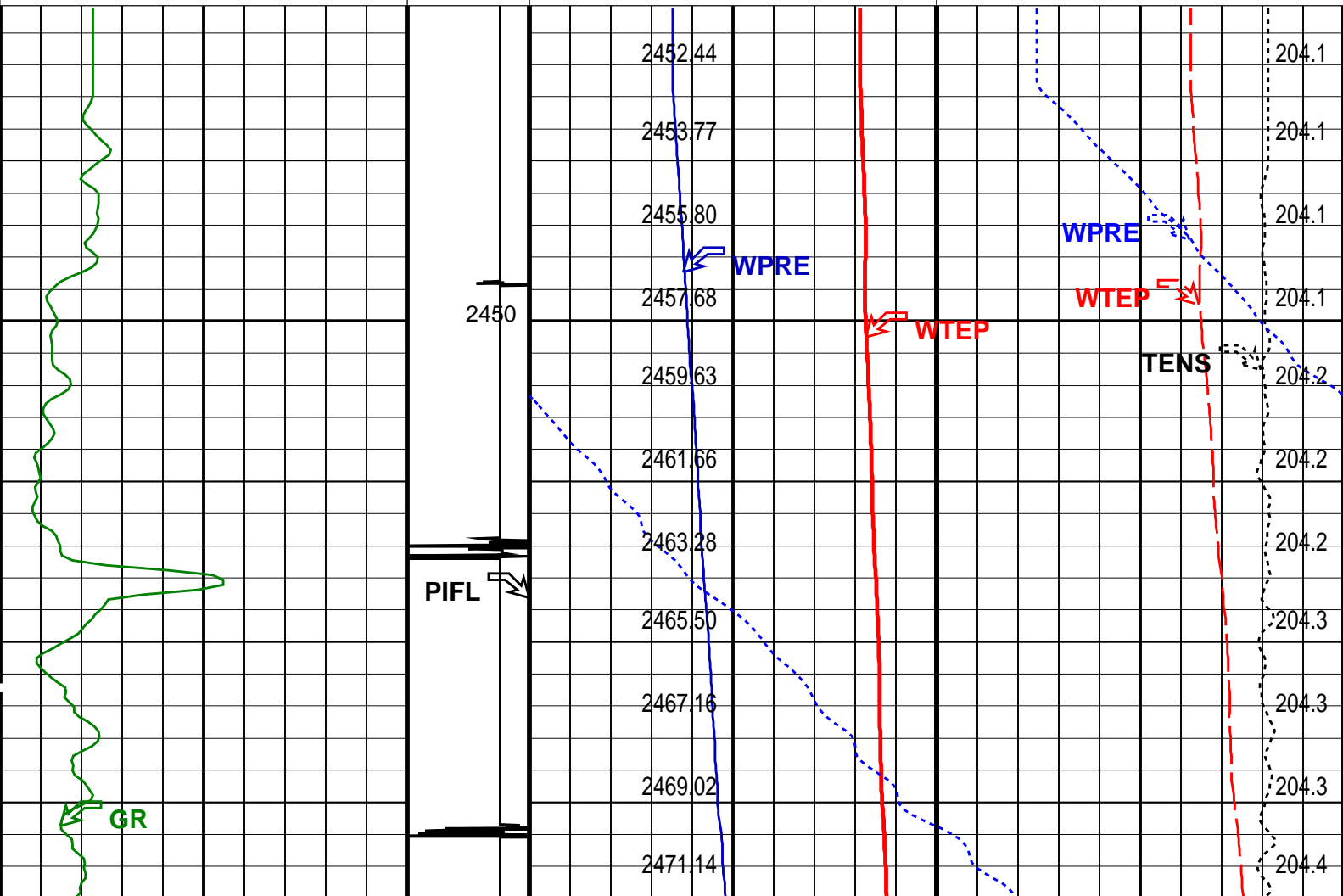
## OP System Version: 17C0-154

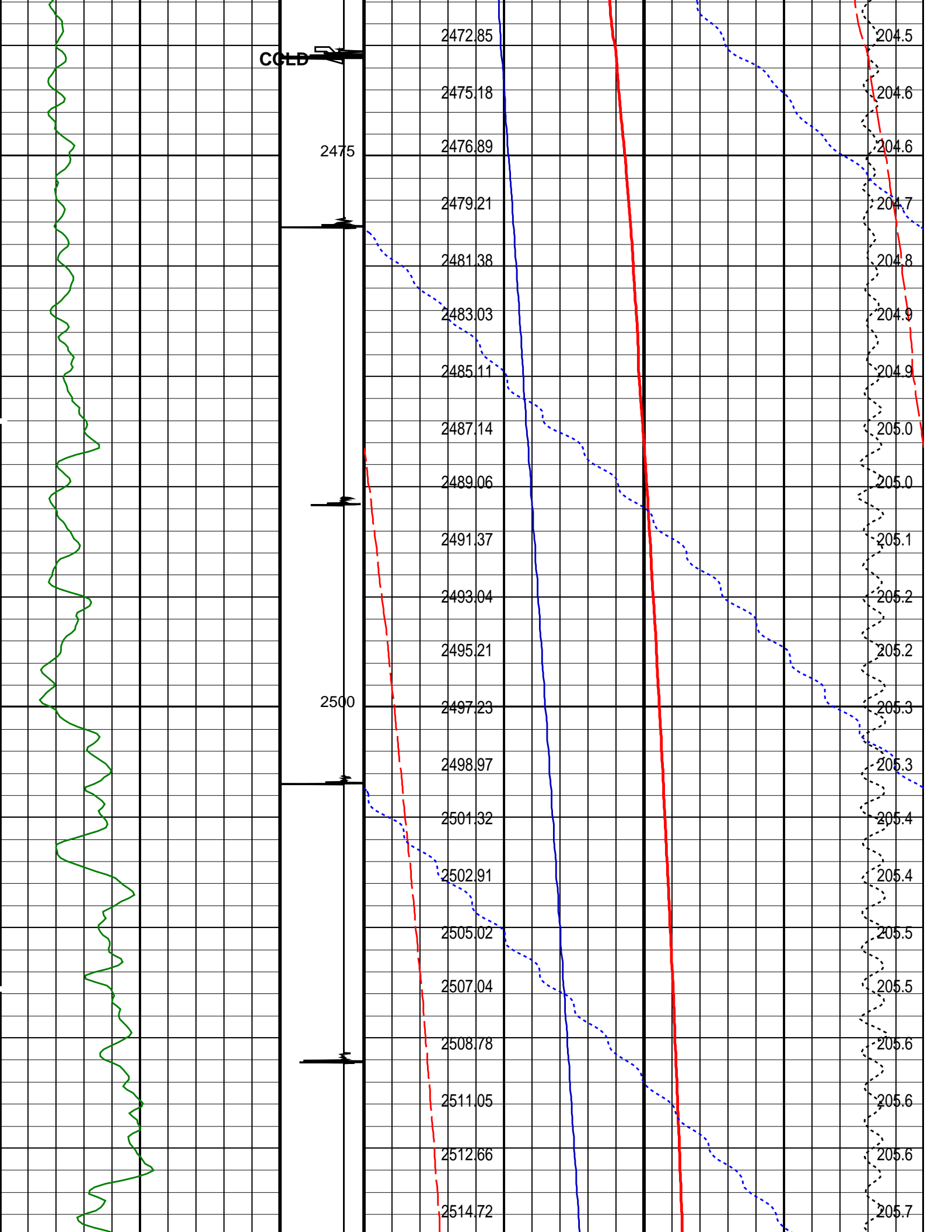
PSPT-B 17C0-154

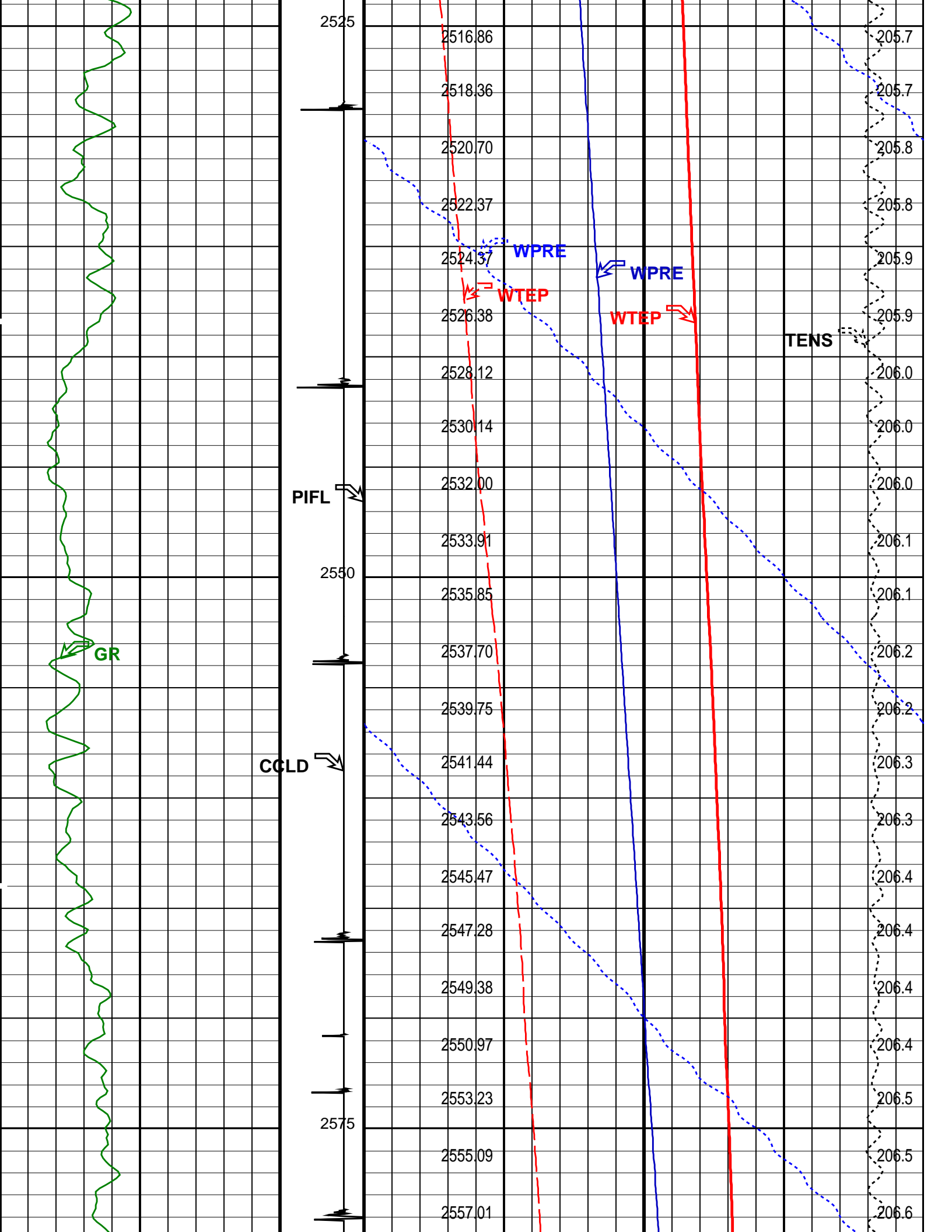
### PIP SUMMARY

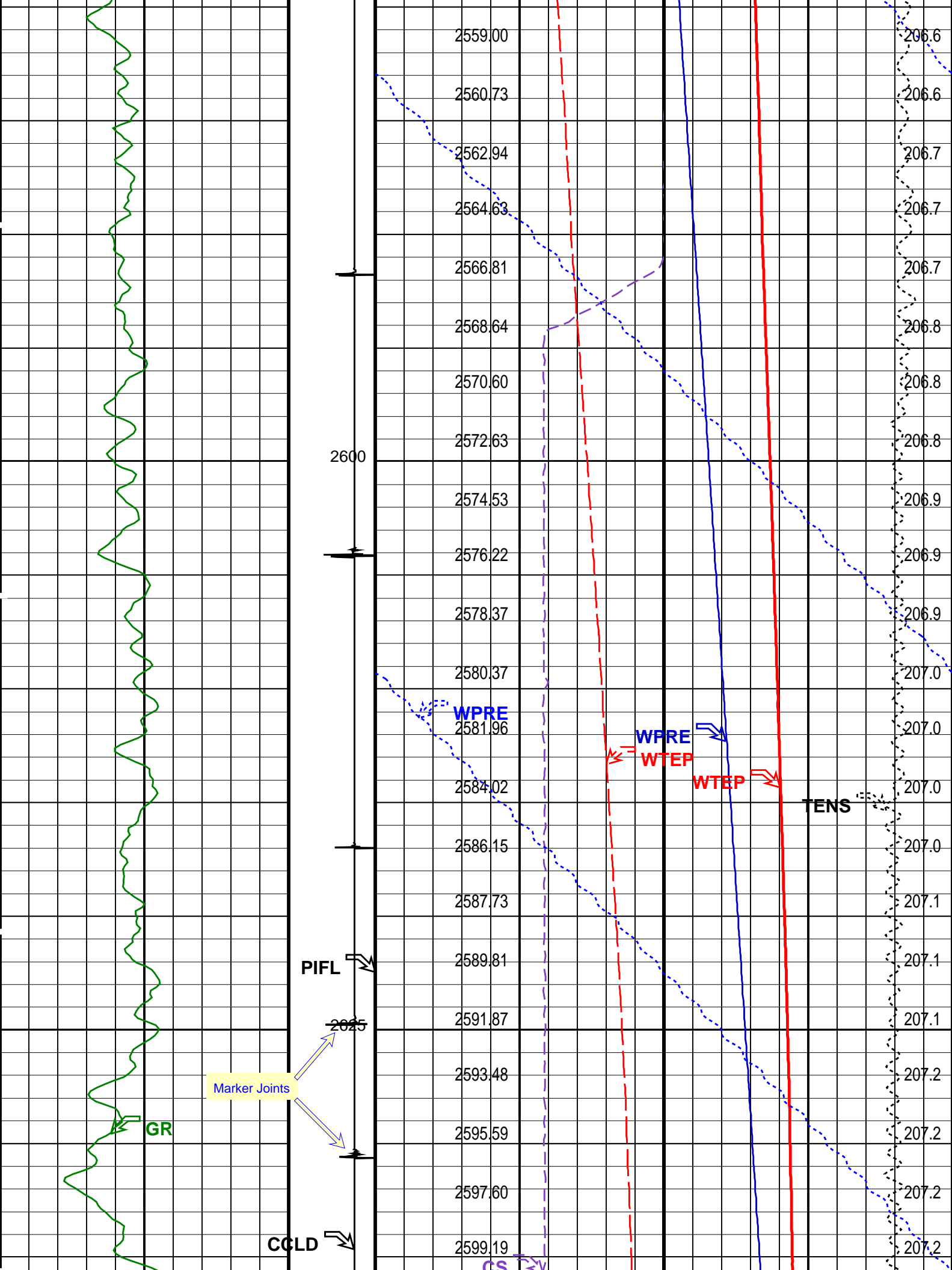
Time Mark Every 60 S

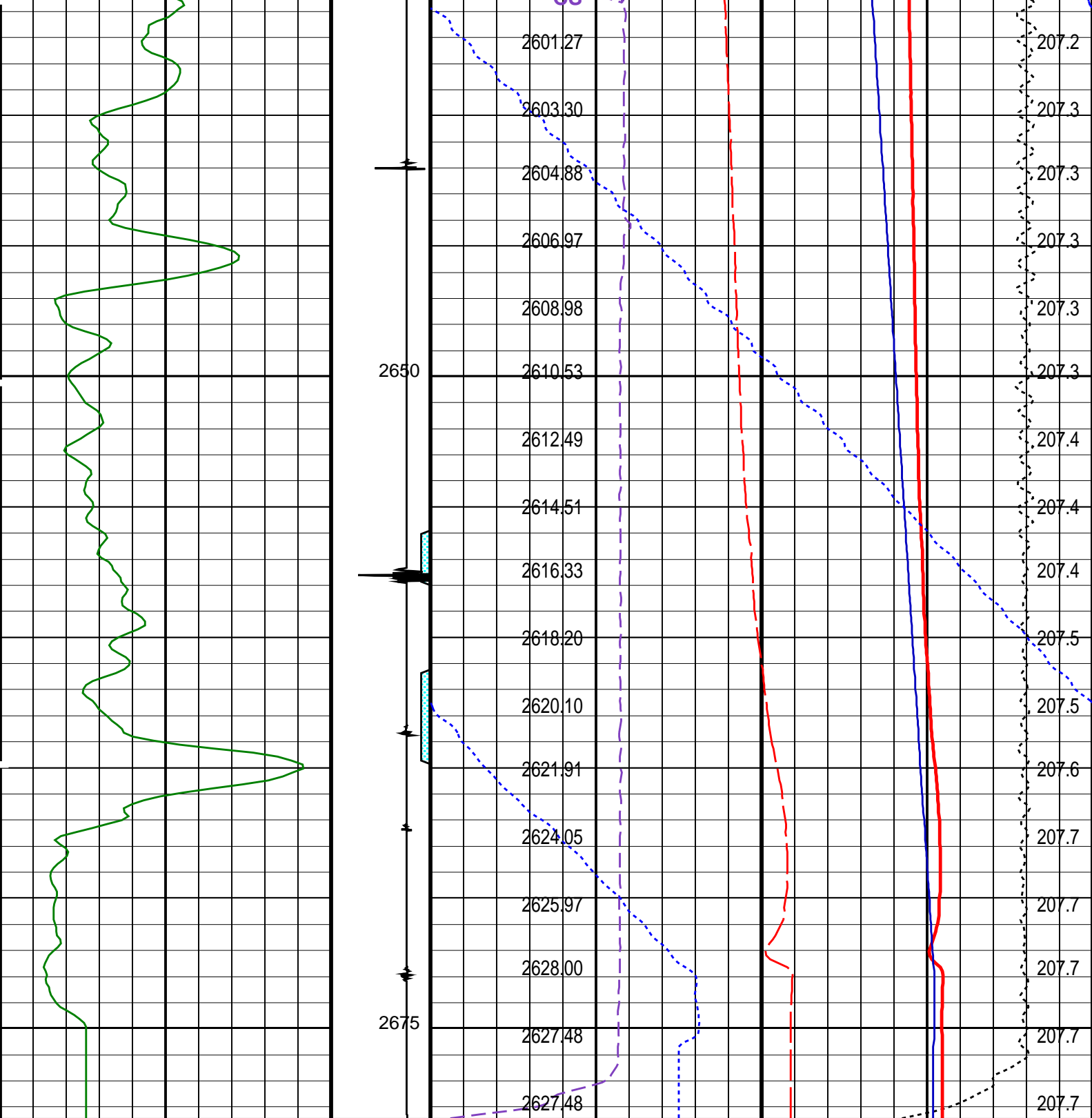
		Amplified Well Pressure (WPRE) (PSIA)		0	20
		Well Pressure (WPRE) (PSIA)		2400	2700
		Well Temperature (WTEP) (DEGF)		0	5
		Well Pressure (WPRE) (PSIA)		Temperature (WTEP) (DEGF)	
		Well Temperature (WTEP) (DEGF)		200	210
		Cable Speed (CS) (F/HR)		0	5000
		Tension (TENS) (LBF)		0	2000
Gamma Ray (GR) (GAPI)	0	150	Discriminat ed CCL (CCLD) 3 (V) -1		











Gamma Ray (GR) (GAPI)		Discriminat ed CCL (CCLD)	Cable Speed (CS) (F/HR)		Tension (TENS) (LBF)	
0	150	3 (V) -1	0	5000	0	2000

Perfo Zone From PERFO_ CURVE to D3T	Well Temperature (WTEP) (DEGF)					
	200					210

Well Pressure (WPRE) (PSIA)		Temperature (WTEP) (DEGF)	
Well Temperature (WTEP) (DEGF)			

	0	(DEGF)	5
	Well Pressure (WPRE)		
	2400	(PSIA)	2700
	Amplified Well Pressure (WPRE)		
	0	(PSIA)	20

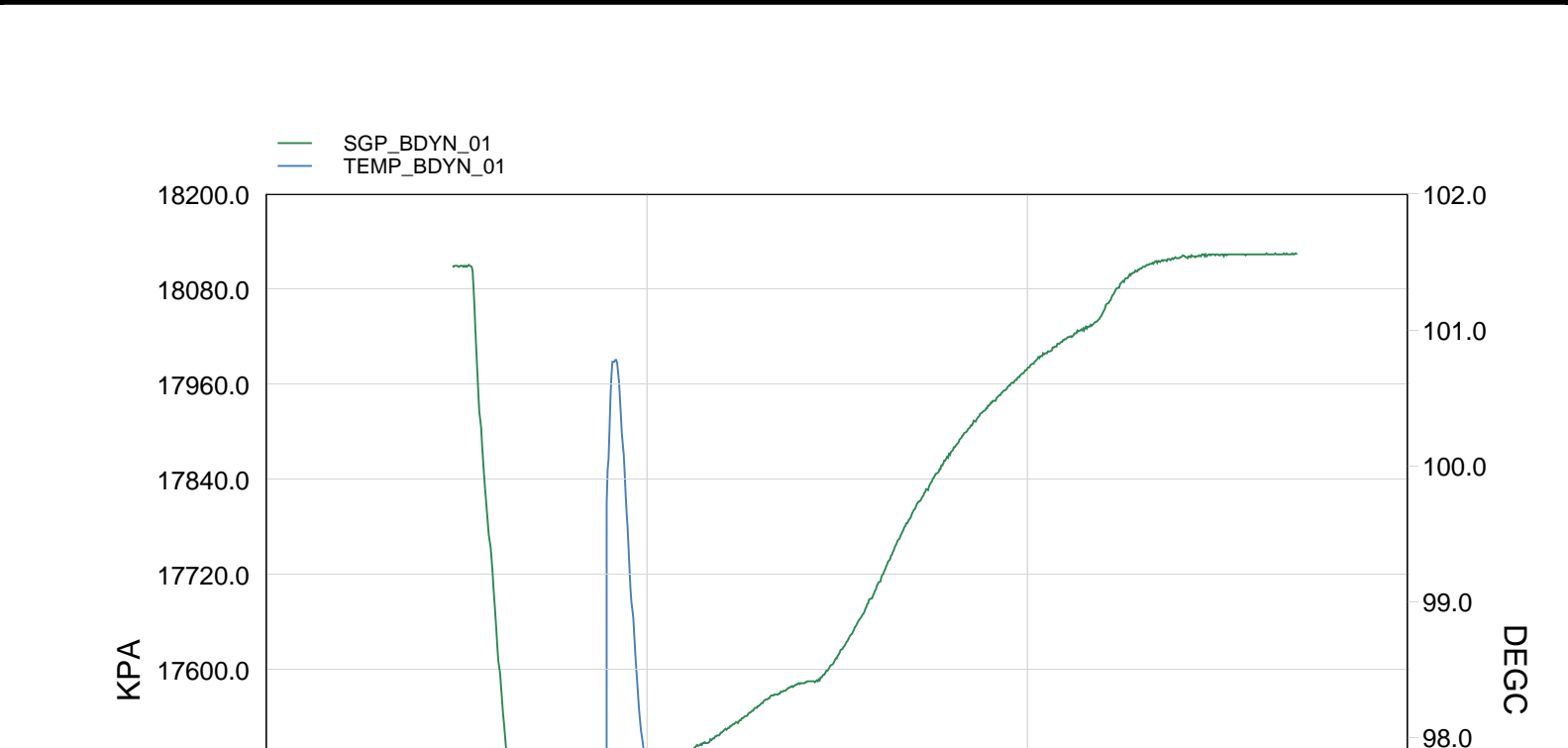
PIP SUMMARY			
Time Mark Every 60 S			
Format: PSP_1		Vertical Scale: 1:200	Graphics File Created: 02-Nov-2009 18:51

OP System Version: 17C0-154			
PSPT-B	17C0-154		

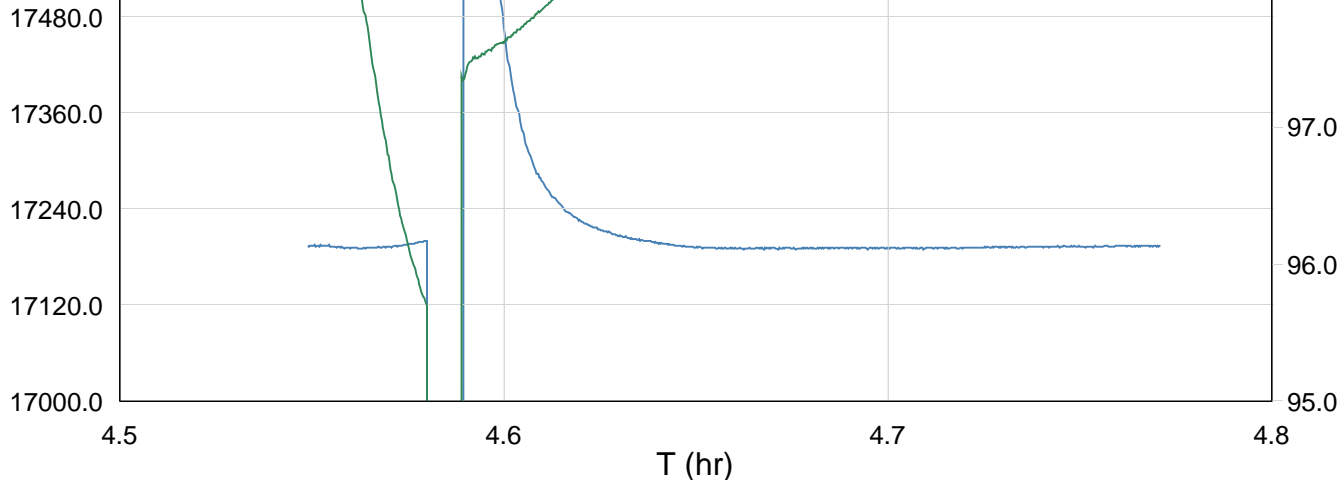
Parameters			
DLIS Name	Description	Value	
System and Miscellaneous			
DO	Depth Offset for Playback	-0.5	M
PP	Playback Processing	NORMAL	

Input DLIS Files						
DEFAULT	PSP_024LUP	FN:23	PRODUCER	02-Nov-2009 18:36	2678.9 M	2443.1 M
Output DLIS Files						
DEFAULT	PSP_026PUP	FN:25	PRODUCER	02-Nov-2009 18:51		

</







TIME	KPA	PSIA	DEGF
2550.0	18109.6153	2626.5819	205.0377
2580.0	17824.8453	2585.2795	205.0154
2610.0	17419.1397	2526.4369	205.0138
2640.0	17210.2252	2496.1364	205.0498
2670.0	-999999.9999	-999999.9999	-102.3231 Gun Fired
2700.0	17422.7662	2526.9629	213.2994
2730.0	17448.5464	2530.7019	208.1933
2760.0	17478.5052	2535.0471	206.1220
2790.0	17508.1514	2539.3469	205.5095
2820.0	17535.8448	2543.3635	205.2682
2850.0	17565.9741	2547.7334	205.1478
2880.0	17582.9187	2550.1910	205.0736
2910.0	17610.2853	2554.1602	205.0278
2940.0	17678.0351	2563.9865	205.0102
2970.0	17762.2885	2576.2064	205.0148
3000.0	17832.8518	2586.4407	205.0062
3030.0	17892.7642	2595.1303	205.0102
3060.0	17938.0060	2601.6921	205.0074
3090.0	17976.7423	2607.3103	205.0117
3120.0	18008.5491	2611.9235	205.0158
3150.0	18033.5049	2615.5430	205.0074
3180.0	18084.5339	2622.9441	205.0253
3210.0	18112.1637	2626.9515	205.0214
3240.0	18120.3332	2628.1364	205.0262
3270.0	18124.4515	2628.7337	205.0293
3300.0	18123.8231	2628.6426	205.0317
3330.0	18124.3063	2628.7126	205.0381

**Schlumberger**

Gun Shooting Pass

Output DLIS Files

DEFAULT

PERFO\_013LUP

FN:12

PRODUCER

02-Nov-2009 04:29

OP System Version: 17C0-154

MWP\_GUN17C0-154

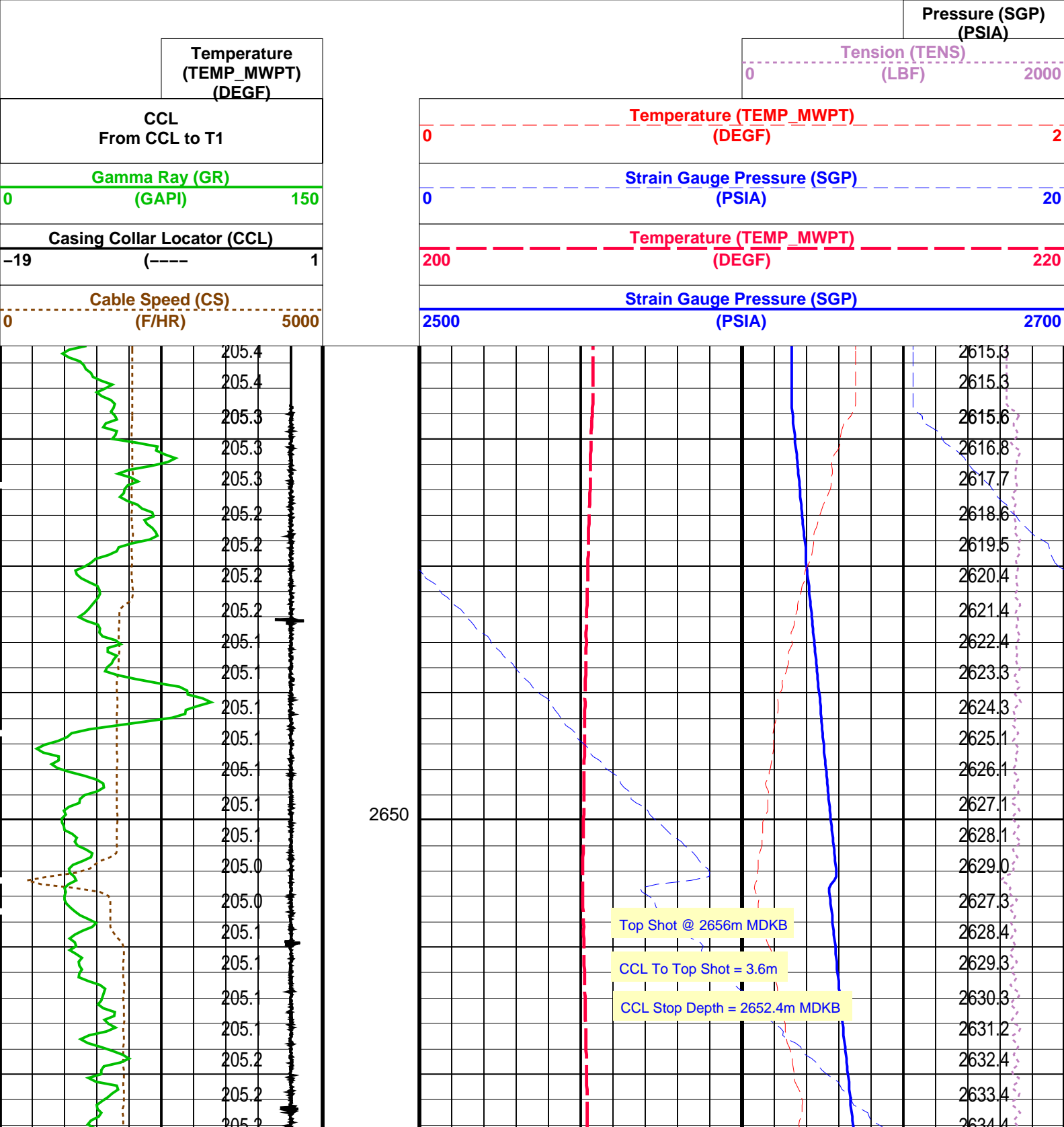
MWGT-AA17C0-154

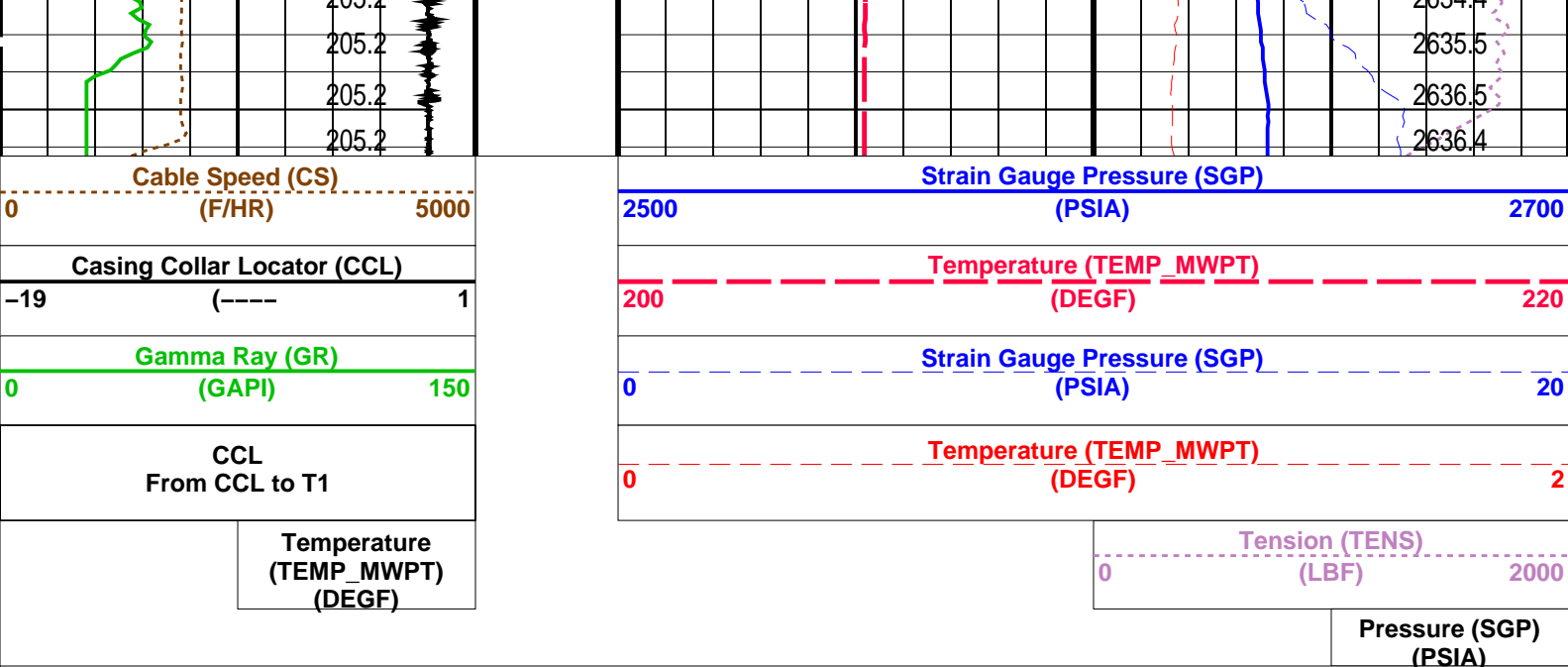
MWPT-CA

17C0-154

PIP SUMMARY

Time Mark Every 60 S





PIP SUMMARY


Time Mark Every 60 S

Parameters			
DLIS Name	Description	Value	
MWPT-CA: MEASUREMENT WHILE PERFORATING TOOL			
DEVI_FL_CORR	Deviation Angle for Flow Line Correction	0	DEG
FLD	Flow Line Density	1	G/C3
MWPT_NULL_SOURCE	MWPT NULL Temperature Source	TEMS	
MWPT_NULL_TEMP	MWPT NULL Temperature	0.0	DEGC

Format: MWP Vertical Scale: 1:200 Graphics File Created: 02-Nov-2009 04:29

OP System Version: 17C0-154			
MWP_GUN	17C0-154	MWPT-CA	17C0-154
MWGT-AA	17C0-154		

Output DLIS Files			
DEFAULT	PERFO_013LUP	FN:12	PRODUCER 02-Nov-2009 04:29



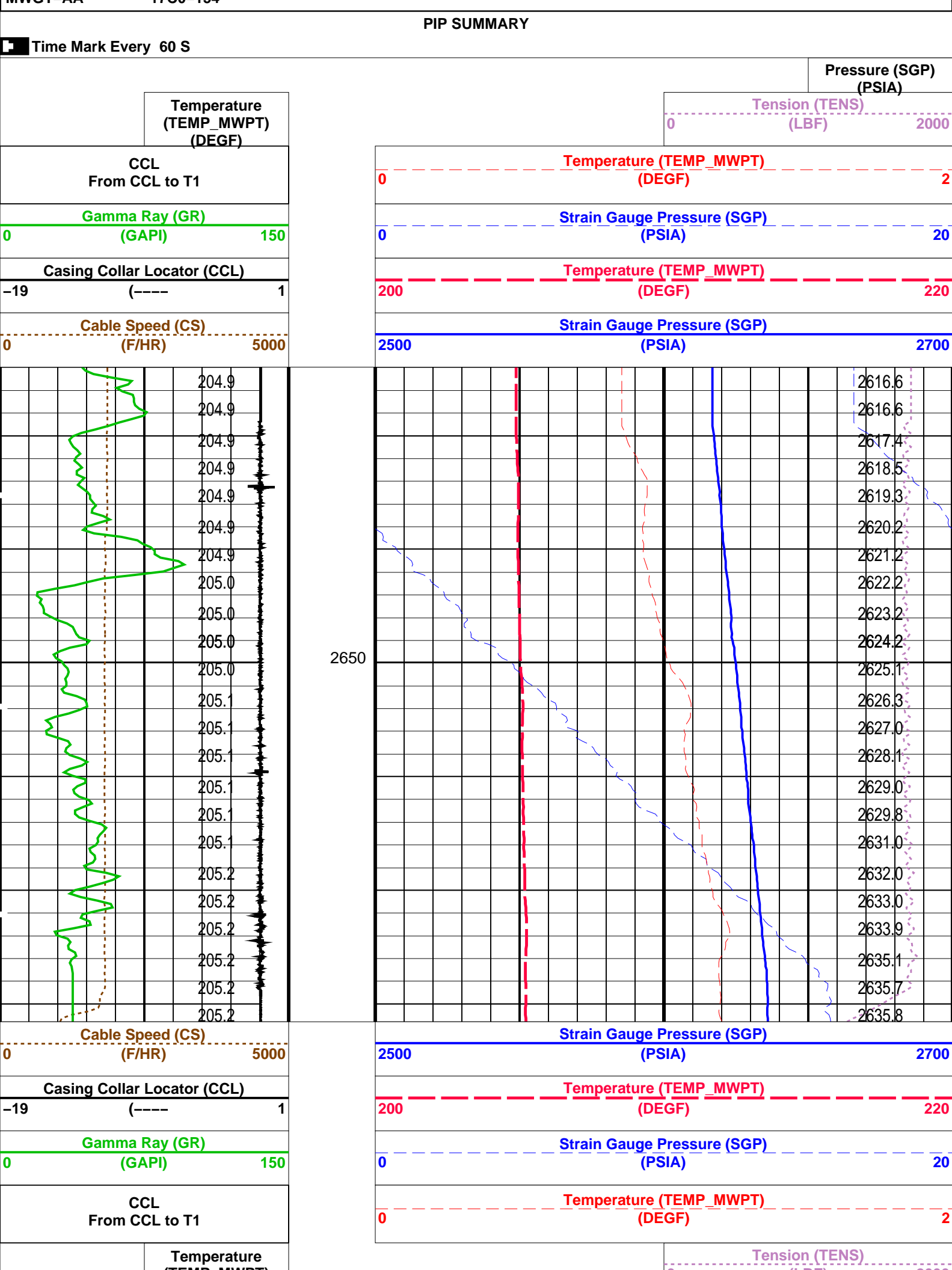
Gun Correlation Pass

MAXIS Field Log

Company: Esso Australia Pty Ltd. Well: A-5a

Output DLIS Files			
DEFAULT	PERFO_012LUP	FN:11	PRODUCER 02-Nov-2009 04:24 2665.8 M 2637.0 M

OP System Version: 17C0-154			
MWP_GUN	17C0-154	MWPT-CA	17C0-154
MWGT-AA	17C0-154		



(TEMP_MWPT) (DEGF)		0	(LBF)	2000
			Pressure (SGP) (PSIA)	
PIP SUMMARY				
Time Mark Every 60 S				
Parameters				
DLIS Name		Description		Value
MWPT-CA: MEASUREMENT WHILE PERFORATING TOOL				
DEVI_FL_CORR		Deviation Angle for Flow Line Correction		0 DEG
FLD		Flow Line Density		1 G/C3
MWPT_NULL_SOURCE		MWPT NULL Temperature Source		TEMS
MWPT_NULL_TEMP		MWPT NULL Temperature		0.0 DEGC
Format: MWP		Vertical Scale: 1:200		Graphics File Created: 02-Nov-2009 04:24
OP System Version: 17C0-154				
MWP_GUN		17C0-154		MWPT-CA 17C0-154
MWGT-AA		17C0-154		
Output DLIS Files				
DEFAULT		PERFO_012LUP		FN:11 PRODUCER 02-Nov-2009 04:24

Company:	Esso Australia Pty Ltd.	Schlumberger
Well:	A-5a	
Field:	Bream A	
Rig:	Crane / Prod 4	
Country:	Australia	
2 1/8" Powerjet MWPT Perforation Record		
7" Posiset Plug Setting Record		
Cement Dump Record		