

Company: **Esoo Australia Ltd**

Well: **A7a**

Field: **Snapper**

Rig: **Prod 4 / Crane**

Country: **Australia**

Power Cutter 2–1/8" Severing Record

Prod 4 / Crane

Snapper

Gippsland

A7a

Esoo Australia Ltd

LOCATION			
Gippsland	Elev.:	K.B.	41.68 m
Basin		G.L.	-55.00 m
Bass Strait		D.F.	41.68 m
Permanent Datum:	Mean Sea Level	Elev.:	41.68 m
Log Measured From:	Kelly Bushing	-41.68 m	above Perm. Datum
Drilling Measured From:	Kelly Bushing		

State:	Max. Well Deviation	Longitude	Latitude
Victoria	64 deg	148 101 26.72 E	038 011 43.23 S

Logging Date 26-Jul-2009

Run Number 17

Depth Driller 2984 m

Schlumberger Depth 2871 m

Bottom Log Interval 2040 m

Top Log Interval 2027 m

Casing Fluid Type Production Fluids

Salinity

Density 1.2 g/cm3

Fluid Level

BIT/CASING/TUBING STRING

Bit Size 9.875 in

From 730 m

To 2984 m

Casing/Tubing Size 7.000 in

Weight 26 lbn/ft

Grade L-80

From 21.72 m

To 2984 m

Maximum Recorded Temperatures 103 degC

Logger On Bottom 26-Jul-2009

Unit Number 889

Recorded By B. Donahoe, B. Parker

Witnessed By G. Rimmer, D. Madden

PVT DATA			
Oil Density	Run 1	Run 2	Run 3
Water Salinity			
Gas Gravity			
Bo			
Bw			
1/Bg			
Bubble Point Pressure			
Bubble Point Temperature			
Solution GOR			
Maximum Deviation	64 deg		
CEMENTING DATA			
Primary/Squeeze	Primary		
Casing String No			
Lead Cement Type			
Volume			
Density			
Water Loss			
Additives			
Tail Cement Type			
Volume			
Density			
Water Loss			
Additives			
Expected Cement Top			
Logging Date			
Run Number			
Depth Driller			
Schlumberger Depth			
Bottom Log Interval			
Top Log Interval			
Casing Fluid Type			
Salinity			
Density			
Fluid Level			
BIT/CASING/TUBING STRING			
Bit Size			
From			
To			
Casing/Tubing Size			
Weight			
Grade			
From			
To			
Maximum Recorded Temperatures			
Logger On Bottom			
Unit Number			
Recorded By			
Witnessed By			

DEPTH SUMMARY LISTING

Date Created: 28-JUL-2009 14:00:31

Depth System Equipment

Depth Measuring Device		Tension Device		Logging Cable	
Type:	IDW-EB	Type:	PSDS/OSDS	Type:	2-32ZT
Serial Number:	6373	Serial Number:	325357	Serial Number:	208196
Calibration Date:	2-Dec-2008	Calibration Date:	20-Jul-2009	Length:	5100 M
Calibrator Serial Number:	30	Calibrator Serial Number:	1167		
Calibration Cable Type:	2-32ZT	Number of Calibration Points:	10	Conveyance Method:	Wireline
Wheel Correction 1:	-1	Calibration RMS:	10	Rig Type:	Offshore Fixed
Wheel Correction 2:	-2	Calibration Peak Error:	19		

Depth Control Parameters	
Depth (m)	0.0
Depth (m)	0.5
Depth (m)	1.0
Depth (m)	1.5
Depth (m)	2.0
Depth (m)	2.5
Depth (m)	3.0
Depth (m)	3.5
Depth (m)	4.0
Depth (m)	4.5
Depth (m)	5.0
Depth (m)	5.5
Depth (m)	6.0
Depth (m)	6.5
Depth (m)	7.0
Depth (m)	7.5
Depth (m)	8.0
Depth (m)	8.5
Depth (m)	9.0
Depth (m)	9.5
Depth (m)	10.0
Depth (m)	10.5
Depth (m)	11.0
Depth (m)	11.5
Depth (m)	12.0
Depth (m)	12.5
Depth (m)	13.0
Depth (m)	13.5
Depth (m)	14.0
Depth (m)	14.5
Depth (m)	15.0
Depth (m)	15.5
Depth (m)	16.0
Depth (m)	16.5
Depth (m)	17.0
Depth (m)	17.5
Depth (m)	18.0
Depth (m)	18.5
Depth (m)	19.0
Depth (m)	19.5
Depth (m)	20.0
Depth (m)	20.5
Depth (m)	21.0
Depth (m)	21.5
Depth (m)	22.0
Depth (m)	22.5
Depth (m)	23.0
Depth (m)	23.5
Depth (m)	24.0
Depth (m)	24.5
Depth (m)	25.0
Depth (m)	25.5
Depth (m)	26.0
Depth (m)	26.5
Depth (m)	27.0
Depth (m)	27.5
Depth (m)	28.0
Depth (m)	28.5
Depth (m)	29.0
Depth (m)	29.5
Depth (m)	30.0
Depth (m)	30.5
Depth (m)	31.0
Depth (m)	31.5
Depth (m)	32.0
Depth (m)	32.5
Depth (m)	33.0
Depth (m)	33.5
Depth (m)	34.0
Depth (m)	34.5
Depth (m)	35.0
Depth (m)	35.5
Depth (m)	36.0
Depth (m)	36.5
Depth (m)	37.0
Depth (m)	37.5
Depth (m)	38.0
Depth (m)	38.5
Depth (m)	39.0
Depth (m)	39.5
Depth (m)	40.0
Depth (m)	40.5
Depth (m)	41.0
Depth (m)	41.5
Depth (m)	42.0
Depth (m)	42.5
Depth (m)	43.0
Depth (m)	43.5
Depth (m)	44.0
Depth (m)	44.5
Depth (m)	45.0
Depth (m)	45.5
Depth (m)	46.0
Depth (m)	46.5
Depth (m)	47.0
Depth (m)	47.5
Depth (m)	48.0
Depth (m)	48.5
Depth (m)	49.0
Depth (m)	49.5
Depth (m)	50.0
Depth (m)	50.5
Depth (m)	51.0
Depth (m)	51.5
Depth (m)	52.0
Depth (m)	52.5
Depth (m)	53.0
Depth (m)	53.5
Depth (m)	54.0
Depth (m)	54.5
Depth (m)	55.0
Depth (m)	55.5
Depth (m)	56.0
Depth (m)	56.5
Depth (m)	57.0
Depth (m)	57.5
Depth (m)	58.0
Depth (m)	58.5
Depth (m)	59.0
Depth (m)	59.5
Depth (m)	60.0
Depth (m)	60.5
Depth (m)	61.0
Depth (m)	61.5
Depth (m)	62.0
Depth (m)	62.5
Depth (m)	63.0
Depth (m)	63.5
Depth (m)	64.0
Depth (m)	64.5
Depth (m)	65.0
Depth (m)	65.5
Depth (m)	66.0
Depth (m)	66.5
Depth (m)	67.0
Depth (m)	67.5
Depth (m)	68.0
Depth (m)	68.5
Depth (m)	69.0
Depth (m)	69.5
Depth (m)	70.0
Depth (m)	70.5
Depth (m)	71.0
Depth (m)	71.5
Depth (m)	72.0
Depth (m)	72.5
Depth (m)	73.0
Depth (m)	73.5
Depth (m)	74.0
Depth (m)	74.5
Depth (m)	75.0
Depth (m)	75.5
Depth (m)	76.0
Depth (m)	76.5
Depth (m)	77.0
Depth (m)	77.5
Depth (m)	78.0

Log Sequence:	Subsequent Log In the Well
Reference Log Name:	ExxonMobil Composite Log
Reference Log Run Number:	N/A
Reference Log Date:	18-May-2008

Depth Control Remarks	
-----------------------	--

- | |
|-------------------------------------------------------------------------------------------------------------------------------------------------------------------------------------------------------------------------------------------------|
| <ol style="list-style-type: none">1. All Schlumberger depth procedures followed.2. IDW used as primary depth reference, Z chart used as secondary.3. CMTD used as primary tension device.4.5. |
|-------------------------------------------------------------------------------------------------------------------------------------------------------------------------------------------------------------------------------------------------|

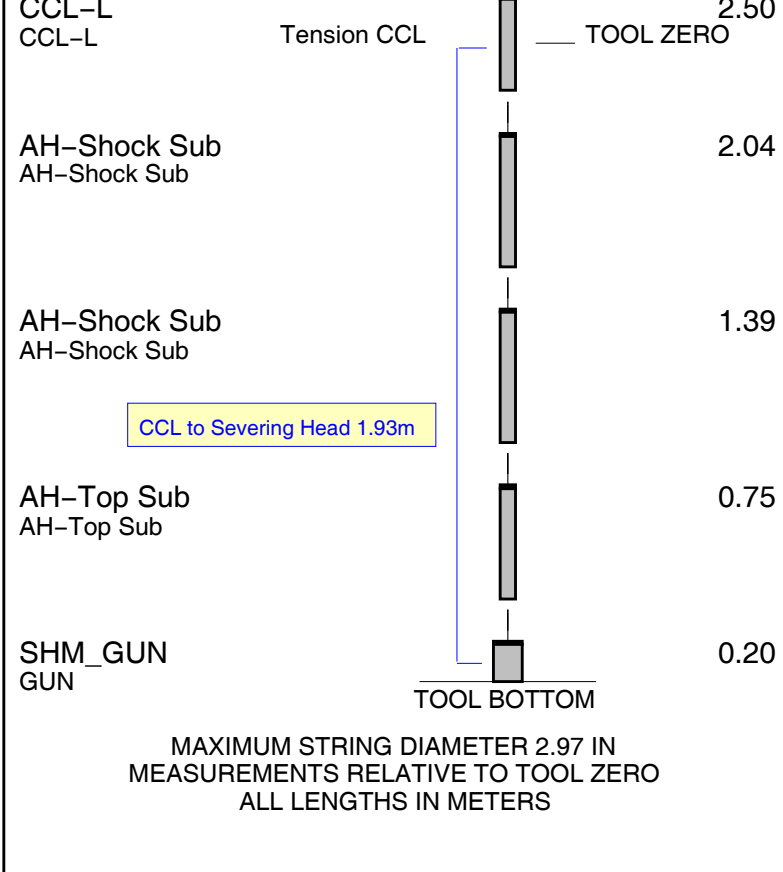
DISCLAIMER

THE USE OF AND RELIANCE UPON THIS RECORDED-DATA BY THE HEREIN NAMED COMPANY (AND ANY OF ITS AFFILIATES, PARTNERS, REPRESENTATIVES, AGENTS, CONSULTANTS AND EMPLOYEES) IS SUBJECT TO THE TERMS AND CONDITIONS AGREED UPON BETWEEN SCHLUMBERGER AND THE COMPANY, INCLUDING: (a) RESTRICTIONS ON USE OF THE RECORDED-DATA; (b) DISCLAIMERS AND WAIVERS OF WARRANTIES AND REPRESENTATIONS REGARDING COMPANY'S USE OF AND RELIANCE UPON THE RECORDED-DATA; AND (c) CUSTOMER'S FULL AND SOLE RESPONSIBILITY FOR ANY INFERENCE DRAWN OR DECISION MADE IN CONNECTION WITH THE USE OF THIS RECORDED-DATA.

OTHER SERVICES1	
OS1:	
OS2:	
OS3:	
OS4:	

REMARKS: RUN NUMBER 1

Log correlated to ExxonMobil composite log 18–May–2009, supplied with the logging program.
Maximum well deviation = 64deg @ 1749m MDKB.
Objectives: RIH with 2 1/8" Power Cutter and correlate to CCL to Run 1 Gamma Ray, CCL Correlation Log
Position the cutter at 2027m MDKB inside the 2 7/8" tubing joint and cut tubing.
CCL to Severing Head = 1.93m. CCL stop depth = 2025.07m MDKB.

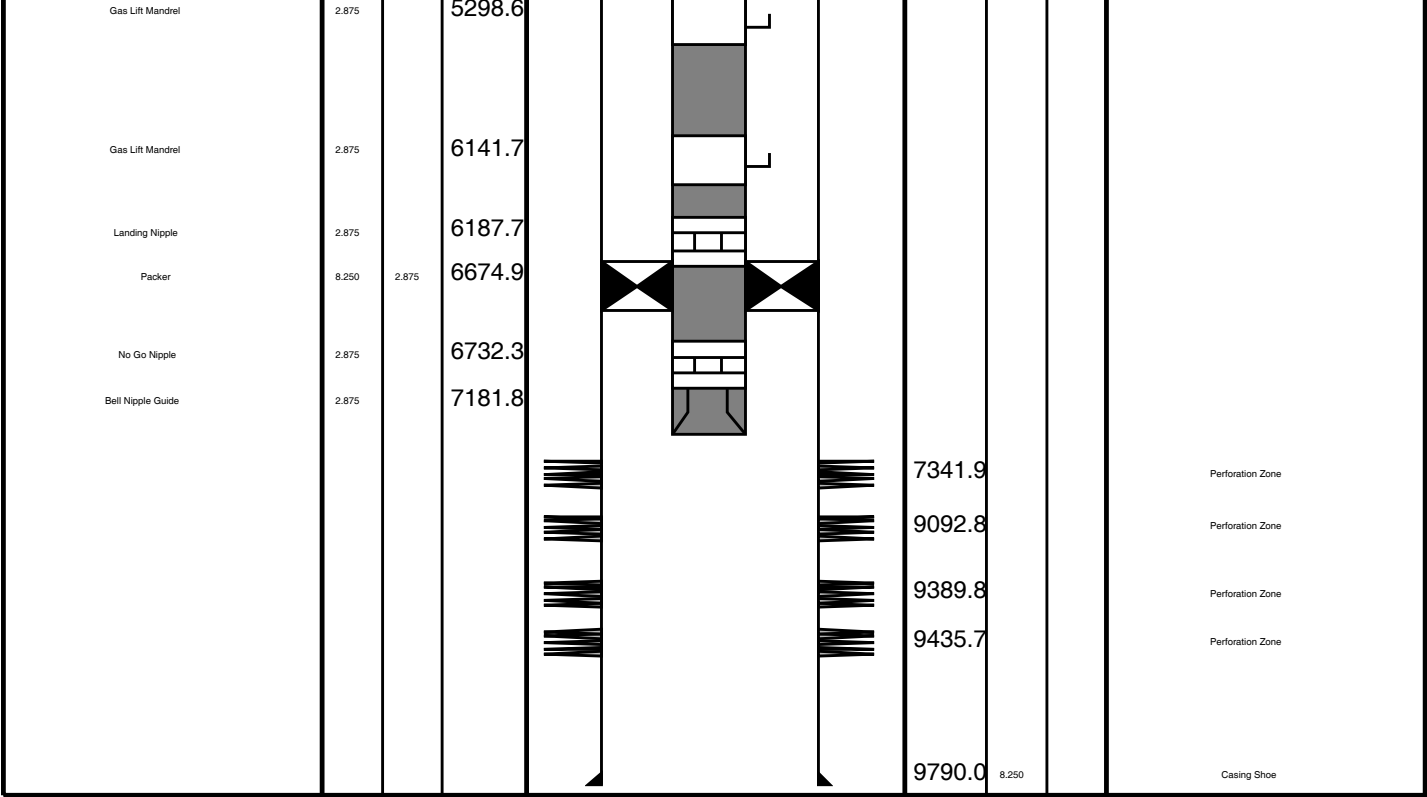


Client: Esso Australia Ltd
Well: A7a
Field: Snapper
State: Victoria
Country: Australia

Drawing Date: 7/21/2009

Rig Name:
Reference Datum: Drill Floor
Elevation: 41.6 ft

Production String	(in)		(ft)	Well Schematic	(ft)		(in)	Casing String
	OD	ID			MD	OD	ID	
Tubing Hanger	3.5	2.875	68.9		0.0	8.250		Casing String
Tubing	2.875		68.9		136.7	10.750		Casing String
					136.7	8.250	10.750	Liner Hanger
Shut-in Valve	2.875		1475.1					
Gas Lift Mandrel	2.875		1629.3					
					2395.0	10.750		Casing Shoe
Gas Lift Mandrel	2.875		3605.6					



Power Cutter
2027 m

MAXIS Field Log

Company: Esso Australia Ltd Well: A7a

Output DLIS Files

DEFAULT PERFO_186LUP FN:180 PRODUCER 26-Jul-2009 03:29 2042.2 M 1943.9 M

OP System Version: 16C0-147
MCM

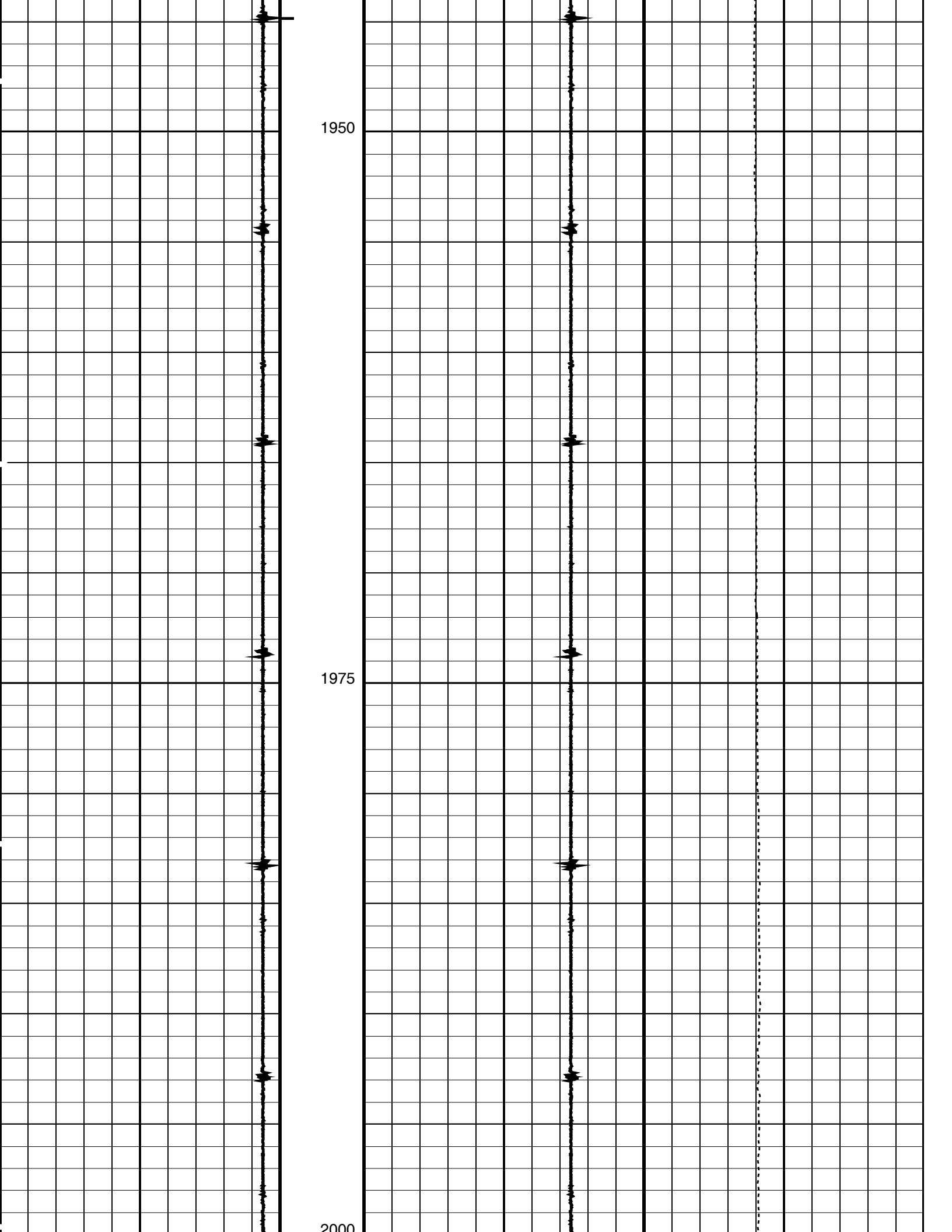
SHM_GUN 16C0-147 CCL-L 16C0-147

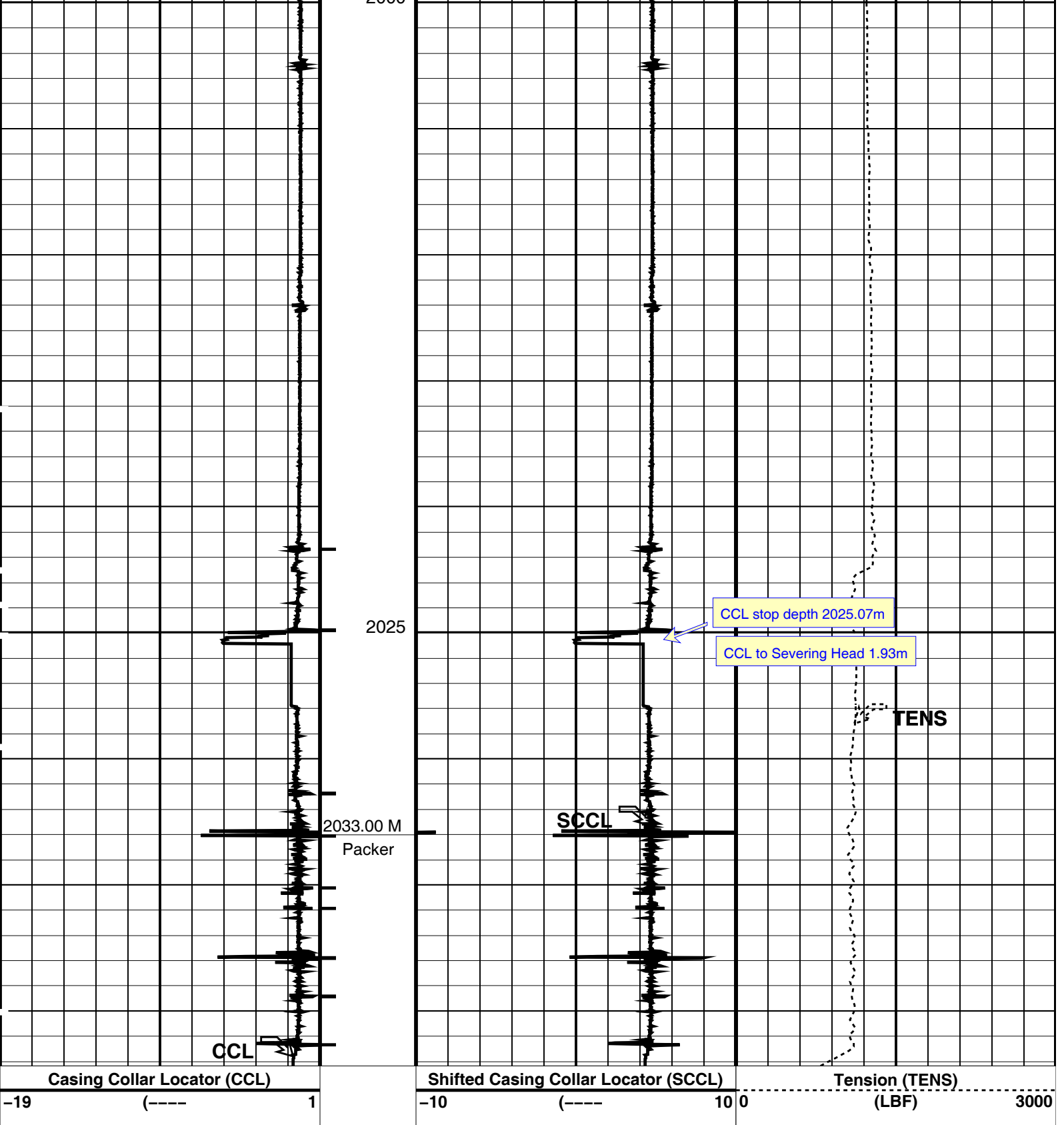
PIP SUMMARY

└─ Casing Collars

Time Mark Every 60 S

Casing Collar Locator (CCL)		Shifted Casing Collar Locator (SCCL)		Tension (TENS)	
-19	(----1	-10	(----10	0	(LBF) 3000





Parameters		
DLIS Name	Description	Value
CCL-L: Casing Collar Locator		
CCLD	CCL reset delay	12 IN
CCLT	CCL Detection Level	0.3 V
Format: PERFO Vertical Scale: 1:200		Graphics File Created: 26-Jul-2009 03:29

SHM_GUN	16C0-147	CCL-L	16C0-147
---------	----------	-------	----------

Output DLIS Files

DEFAULT	PERFO_186LUP	FN:180	PRODUCER	26-Jul-2009 03:29
---------	--------------	--------	----------	-------------------



Correlation Pass

MAXIS Field Log

Company: Esso Australia Ltd	Well: A7a
-----------------------------	-----------

Output DLIS Files

DEFAULT	PERFO_185LUP	FN:179	PRODUCER	26-Jul-2009 03:23	2044.3 M	1999.3 M
---------	--------------	--------	----------	-------------------	----------	----------

OP System Version: 16C0-147

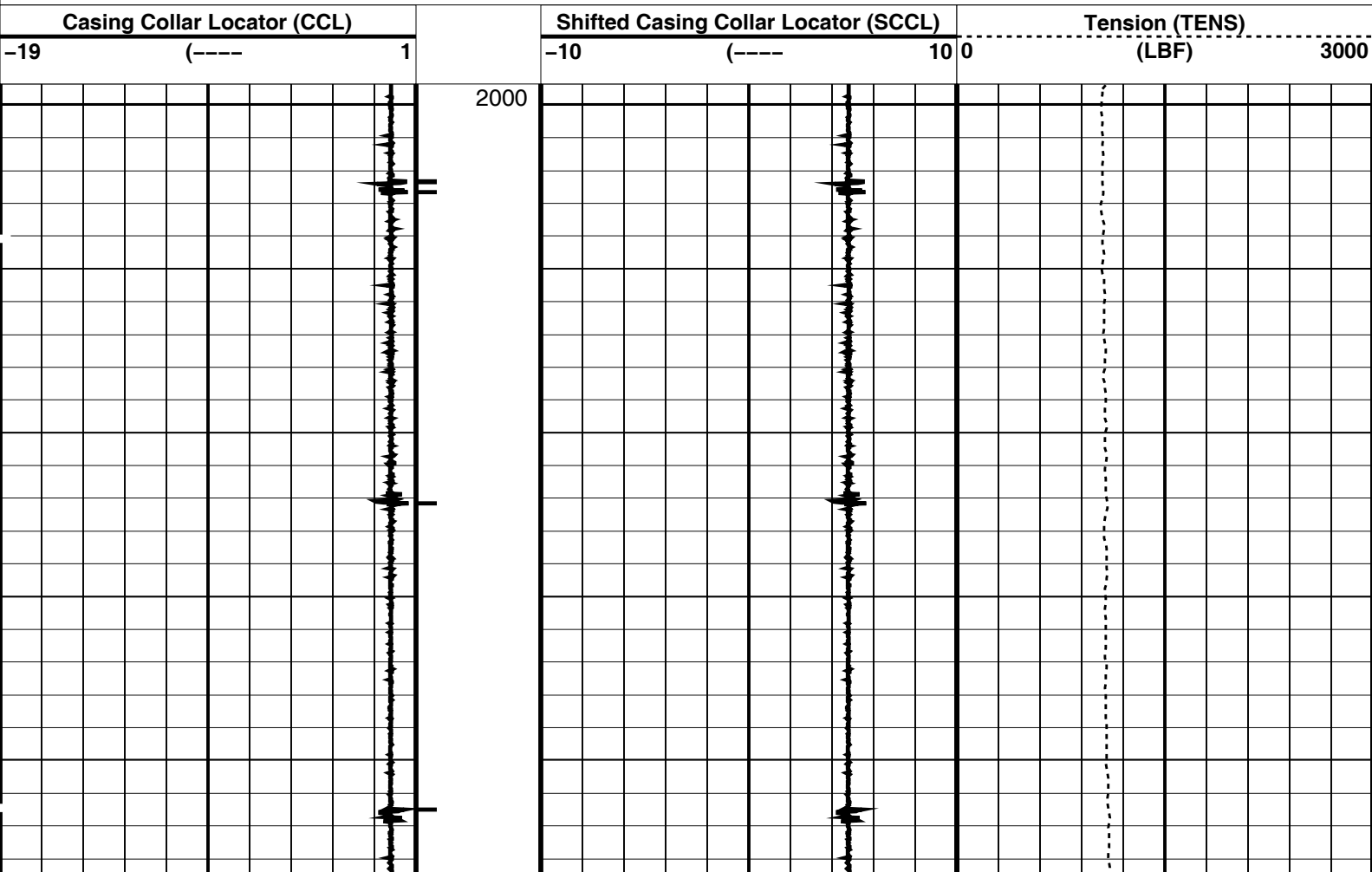
MCM

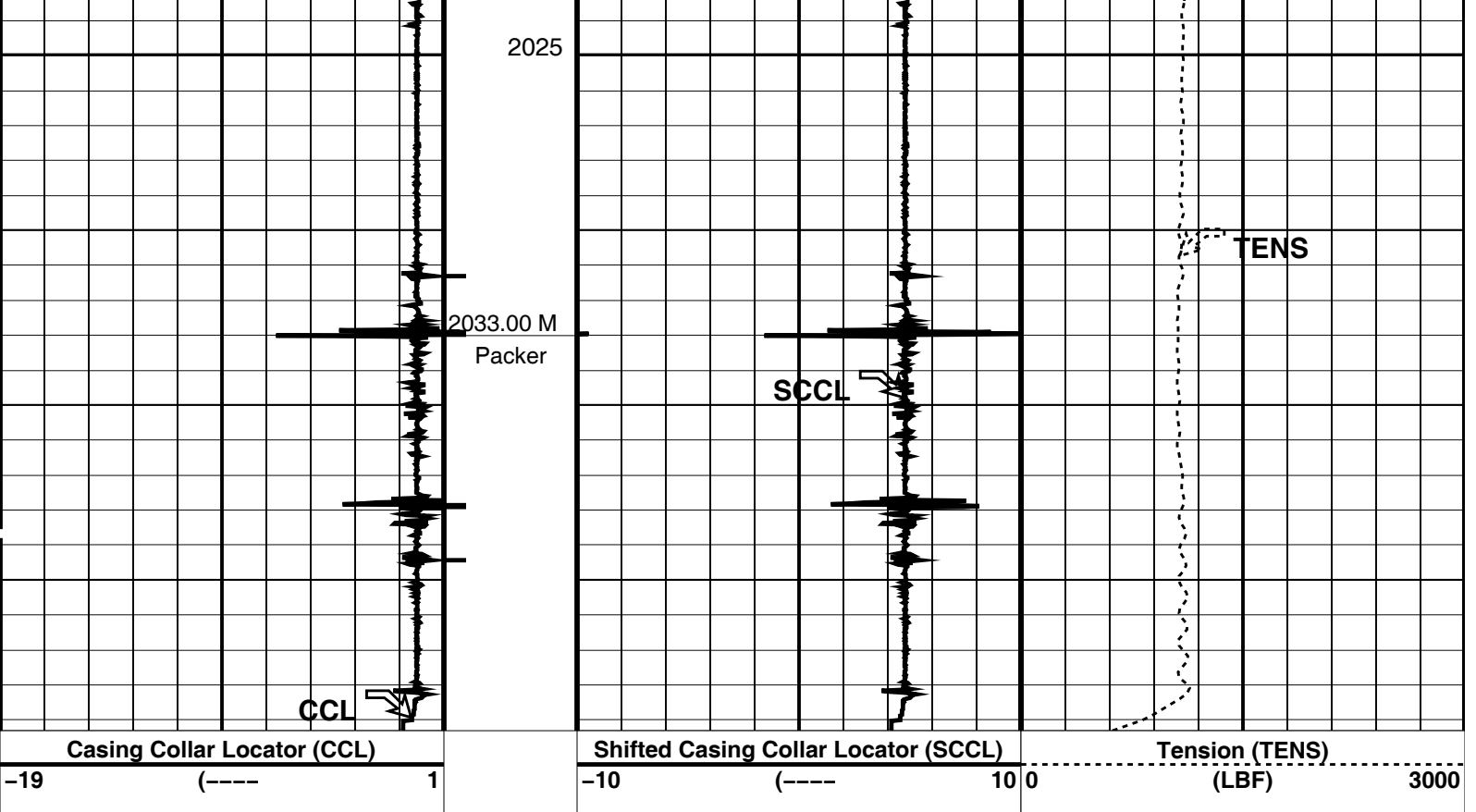
SHM_GUN	16C0-147	CCL-L	16C0-147
---------	----------	-------	----------

PIP SUMMARY

└─ Casing Collars

Time Mark Every 60 S





PIP SUMMARY

Time Mark Every 60 S

Parameters

DLIS Name	Description	Value
CCLD	CCL-L: Casing Collar Locator	12 IN
CCLT	CCL reset delay	0.3 V
	CCL Detection Level	

Format: PERFO Vertical Scale: 1:200 Graphics File Created: 26-Jul-2009 03:23

OP System Version: 16C0-147

MCM

SHM_GUN 16C0-147 CCL-L 16C0-147

Output DLIS Files

DEFAULT PERFO_185LUP FN:179 PRODUCER 26-Jul-2009 03:23

Company: Esso Australia Ltd

Schlumberger

Well: A7a
Field: Snapper
Rig: Prod 4 / Crane
Country: Australia

Power Cutter 2-1/8" Severing Record