

Company: Esso Australia Pty Ltd

Well: FTA A3
Field: Gippsland Basin
Rig: Prod 4 / Crane

Country: Australia

7" posiset Plug Setting Record
Water & Cement Bailer Record
14-Aug-2009

Prod 4 / Crane
Gippsland Basin
Bass Strait
FTA A3
Esso Australia Pty Ltd

LOCATION			
Bass Strait Gippsland Basin	Elev.: K.B. 34.50 m G.L. -69.00 m D.F. 34.50 m		
Permanent Datum: _____ Log Measured From: _____ Drilling Measured From: _____	M.S.L. _____ D.F. _____ D.F. _____	Elev.: 69.00 m -69.00 m above Perm. Datum	
State: Victoria	Max. Well Deviation 56.9 deg	Longitude 148°16'36.62"E	Latitude 038°24'31.39"S

Logging Date	14-Aug-2009		
Run Number	1Through 4		
Depth Driller	3374 m		
Schlumberger Depth	3284 m		
Bottom Log Interval	3275 m		
Top Log Interval	3275 m		
Casing Fluid Type	Production fluids		
Salinity			
Density	1.01 g/cm3		
Fluid Level			
BIT/CASING/TUBING STRING			
Bit Size	8.500 in		
From	2425.8 m		
To	3374 m		
Casing/Tubing Size	7.000 in		
Weight	26 lbm/ft		
Grade	N-80		
From	2287 m		
To	3372 m		
Maximum Recorded Temperatures	224 degF		
Logger On Bottom	14-Aug-2009	Time	10:40
Unit Number	889	AUSL	
Recorded By	Owen D & Shannon G		
Witnessed By	Donald Broomfield , John Digiovanni		

PVT DATA				Run 1	Run 2	R
Oil Density						
Water Salinity						
Gas Gravity						
Bo						
Bw						
1/Bg						
Bubble Point Pressure						
Bubble Point Temperature						
Solution GOR						
Maximum Deviation	56.9 deg					
CEMENTING DATA						
Primary/Squeeze	Primary					
Casing String No						
Lead Cement Type						
Volume						
Density						
Water Loss						
Additives						
Tail Cement Type						
Volume						
Density						
Water Loss						
Additives						
Expected Cement Top						
Logging Date						
Run Number						
Depth Driller						
Schlumberger Depth						
Bottom Log Interval						
Top Log Interval						
Casing Fluid Type						
Salinity						
Density						
Fluid Level						
BIT/CASING/TUBING STRING						
Bit Size						
From						
To						
Casing/Tubing Size						
Weight						
Grade						
From						
To						
Maximum Recorded Temperatures						
Logger On Bottom		Time				
Unit Number		Location				
Recorded By						
Witnessed By						

Date Created: 14-AUG-2009 17:06:50

Logging Cable
















Type:	2-32ZT
Serial Number:	207308
Length:	5100 M
Conveyance Method:	Wireline
Rig Type:	Offshore Fixed

HUD: not Tagged

SBHP: 3206 Psia
SBHT : 224 DegF
MPBT information:
CCL to MPBT top sealing element = 7m
CCL stop depth = 3268m MDKB
Crew:
Operators : Andrew H & Andrew P (Nights)
Nathan S & Rick M (Days)

RUN 1 SERVICE ORDER #: PROGRAM VERSION: FLUID LEVEL:			RUN 2 SERVICE ORDER #: PROGRAM VERSION: FLUID LEVEL:		
LOGGED INTERVAL	START	STOP	LOGGED INTERVAL	START	STOP

[illegible]

SURFACE EQUIPMENT		SURFACE EQUIPMENT	
MPBM	WITM (SHM)		
DOWNHOLE EQUIPMENT		DOWNHOLE EQUIPMENT	
AH-SWBS-B AH-SWBS-B 758	 13.84	AH-SWBS-B 789 AH-SWBS-B 789	 15.28
AH-SWBS-B AH-SWBS-B 786	 13.15	AH-SWBS-B 788 AH-SWBS-B 788	 14.77
AH-SWBS-B AH-SWBS-B 787	 12.47	AH-SWBS-B 787 AH-SWBS-B 787	 14.26
AH-SWBS-B AH-SWBS-B 788	 11.78	AH-SWBS-B 786 AH-SWBS-B 786	 13.75
AH-SWBS-B AH-SWBS-B 789	 11.10	MH-SWHS-B 759 MH-SWHS-B 759	 12.74
MH-SWHS-A MH-SWHS-A 728	 10.41	CCL-L 9851 CCL-L 9851	 12.26
CCL-L CCL-L 9851	 10.07	AH-2 1/8" Dump Bailer AH-2 1/8" Dump Bailer	 11.80
MPSU-CA MPSU-CA 1102	 9.61		

MPEX-7" Posiset Plug
MPEX-7" Posiset Plug

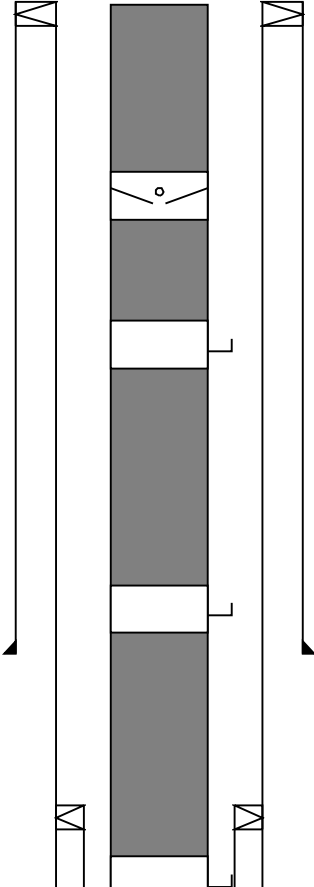
3.20

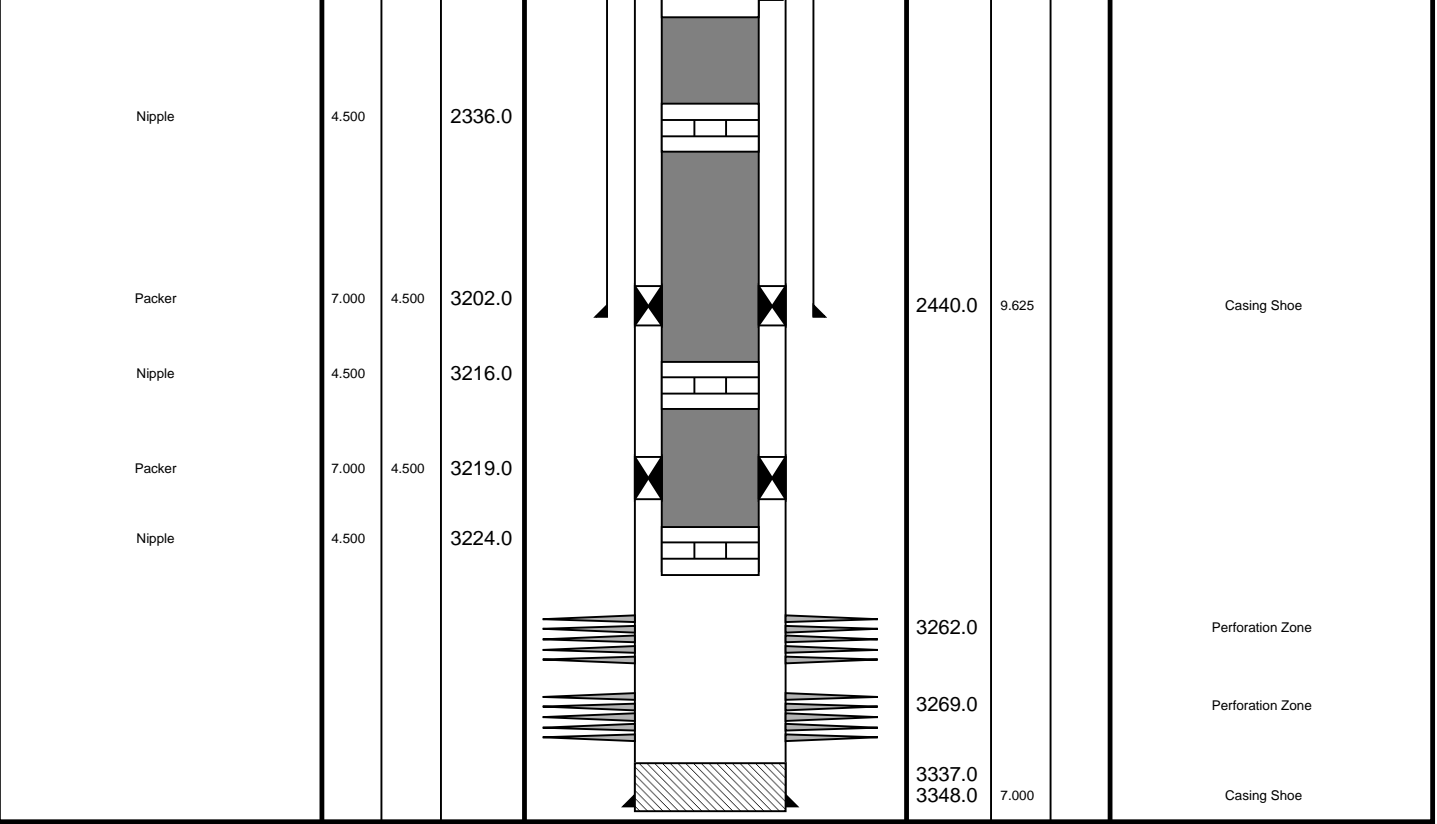
TOOL BOTTOM

MAXIMUM STRING DIAMETER 2.13 IN
MEASUREMENTS RELATIVE TO TOOL ZERO
ALL LENGTHS IN METERS

TOOL BOTTOM

MAXIMUM STRING DIAMETER 2.13 IN
MEASUREMENTS RELATIVE TO TOOL ZERO
ALL LENGTHS IN METERS

Production String	(in)		(m)	Well Schematic	(m)	(in)		Casing String
	OD	ID	MD		MD	OD	ID	
Tubing	4.500		13.0		14.0 14.0	13.625 13.375	9.625	Casing String Liner Hanger
SSSV	4.500		451.0					
Gas Lift Mandrel	4.500		752.0					
Gas Lift Mandrel	4.500		1285.0		1329.0	13.375		Casing Shoe
Gas Lift Mandrel	4.500		2322.0		2287.0 2287.0	7.000 9.625	7.000	Casing String Liner Hanger



Job Events Summary

MAXIS Field Log

Schlumberger Job Event Summary

Time	Elapsed Time	Depth (M)	File
------	--------------	-----------	------

Simulated Log	14-Aug-2009 20:26	000:03	PSP_118LUP
OP checked dummy plug toolstring			
Station Log	14-Aug-2009 22:56	000:32	PSP_120LTP
Pressure test			
Log Pass (up)	15-Aug-2009 0:44	000:03	PSP_122LUP
Correlation pass			
Simulated Log	15-Aug-2009 3:13	000:00	CCL_131LUP
OP checked MPBT toolstring			
Log Pass (down)	15-Aug-2009 5:15	000:09	CCL_141LDP
Logged down onto depth with MPBT			
Simulated Log	15-Aug-2009 5:27	000:28	CCL_142LUP
Set MPBT plug			
Log Pass (up)	15-Aug-2009 6:08	000:09	PERFO_143LUP
Log away			

Simulated Log	15-Aug-2009	7:59	000:32			PERFO_155LUP
OP checked DB toolstring						
Log Pass (up)	15-Aug-2009	10:35	000:06	3263.2 -	3200.1	PERFO_162LUP
Dumped water						
Log Pass (up)	15-Aug-2009	12:39	000:11	3265.0 -	3203.8	PERFO_166LUP
Dumped cement						



Cement Dump Pass

MAXIS Field Log

Input DLIS Files

DEFAULT PERFO_166LUP FN:157 PRODUCER 15-Aug-2009 12:39 3265.0 M 3203.8 M

Output DLIS Files

DEFAULT PERFO_167PUP FN:158 PRODUCER 15-Aug-2009 12:55 3265.8 M 3204.5 M

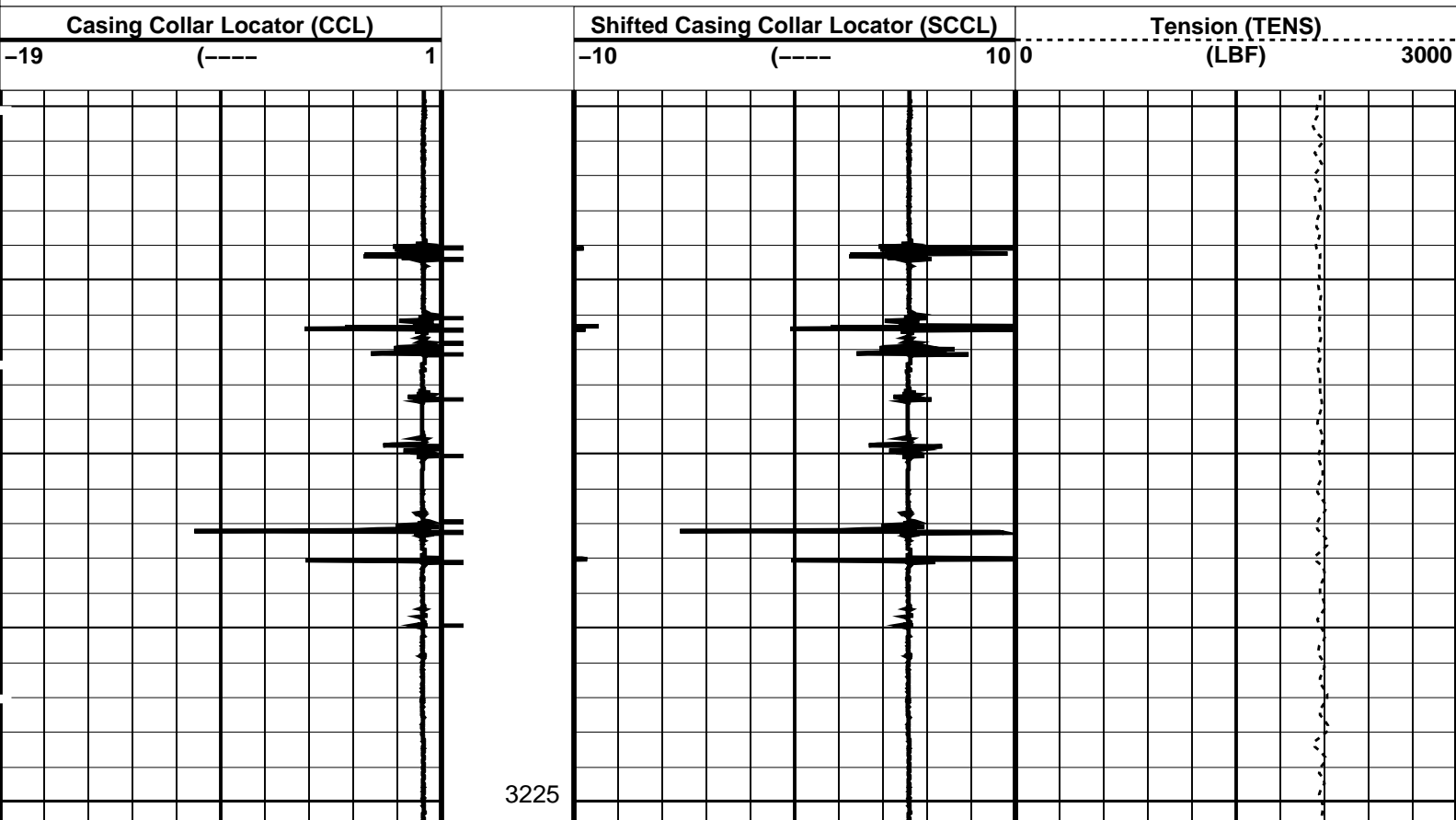
OP System Version: 17C0-154

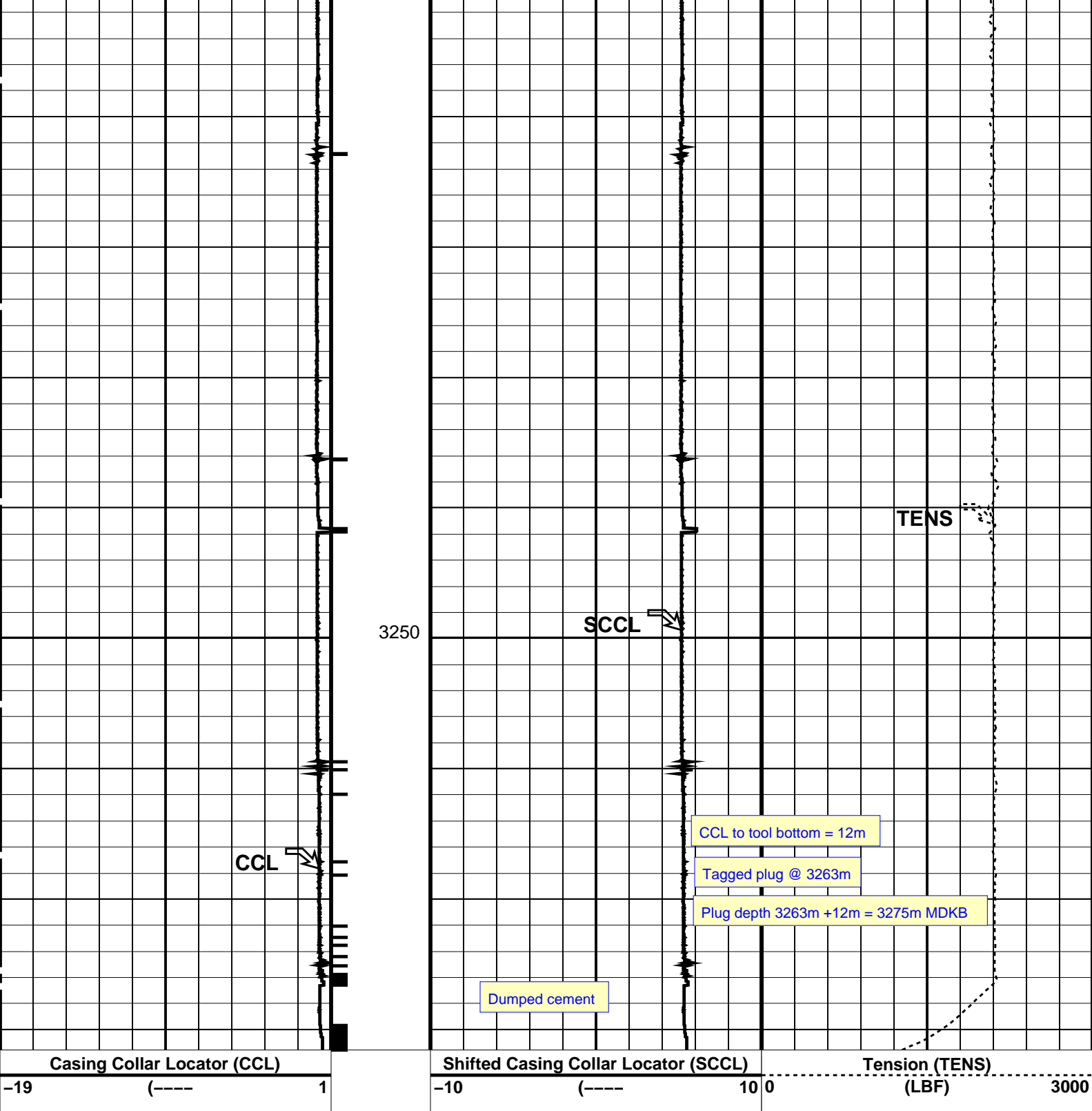
SHM_GUN 17C0-154 CCL-L 17C0-154

PIP SUMMARY

Casing Collars

Time Mark Every 60 S





Parameters		
DLIS Name	Description	Value
CCLD	CCL-L: Casing Collar Locator	12 IN
CCLT	CCL reset delay	0.3 V
System and Miscellaneous		
DO	Depth Offset for Playback	0.7 M
PP	Playback Processing	NORMAL

Format: PERFO Vertical Scale: 1:200 Graphics File Created: 15-Aug-2009 12:55

SHM_GUN	17C0-154	CCL-L	17C0-154
Input DLIS Files			
DEFAULT	PERFO_166LUP	FN:157 PRODUCER	15-Aug-2009 12:39 3265.0 M 3203.8 M
Output DLIS Files			
DEFAULT	PERFO_167PUP	FN:158 PRODUCER	15-Aug-2009 12:55



Water Dump Pass

MAXIS Field Log

Input DLIS Files			
DEFAULT	PERFO_162LUP	FN:153 PRODUCER	15-Aug-2009 10:35 3263.2 M 3200.1 M
Output DLIS Files			
DEFAULT	PERFO_163PUP	FN:154 PRODUCER	15-Aug-2009 10:41 3263.6 M 3200.6 M

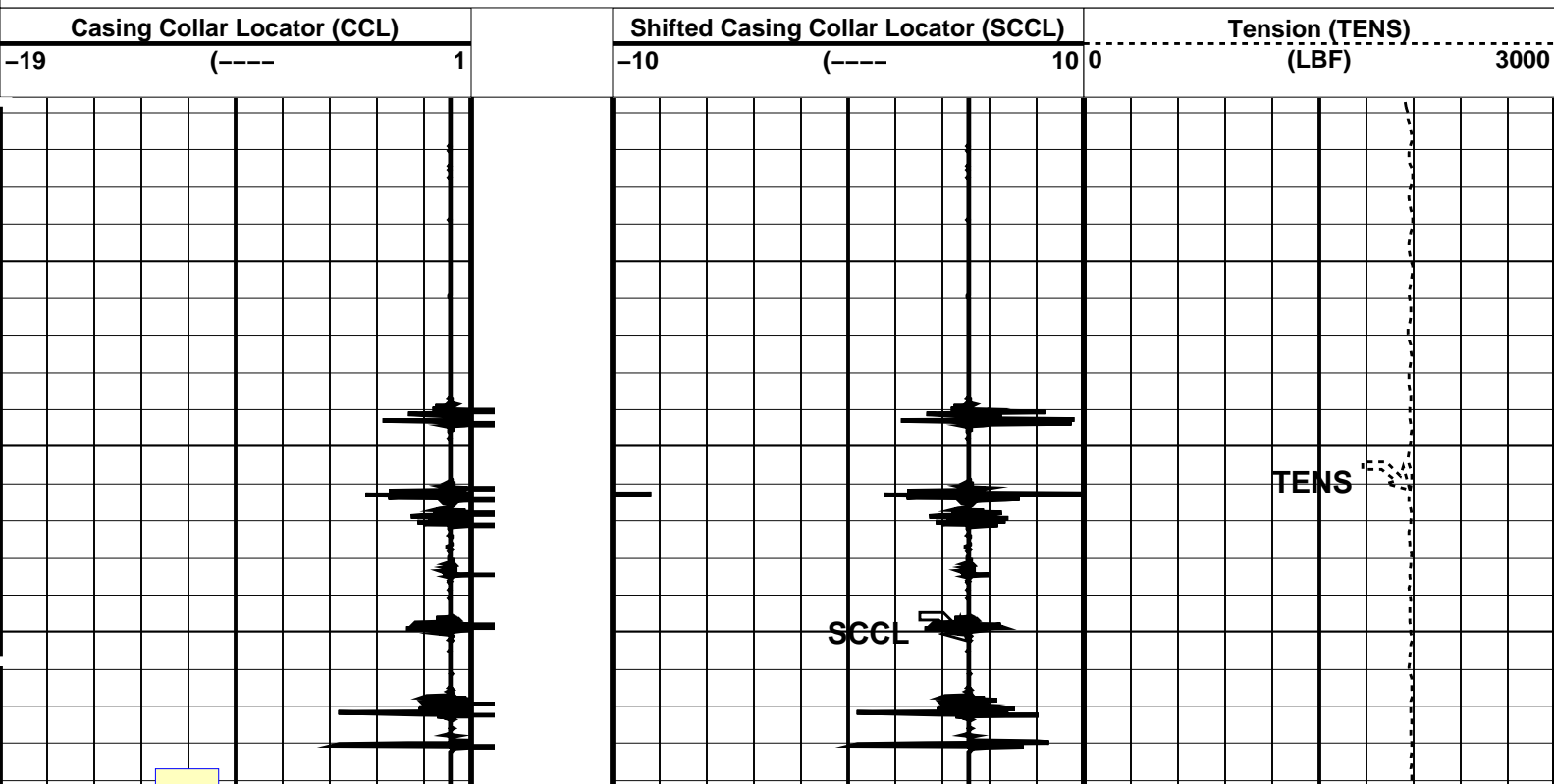
OP System Version: 17C0-154

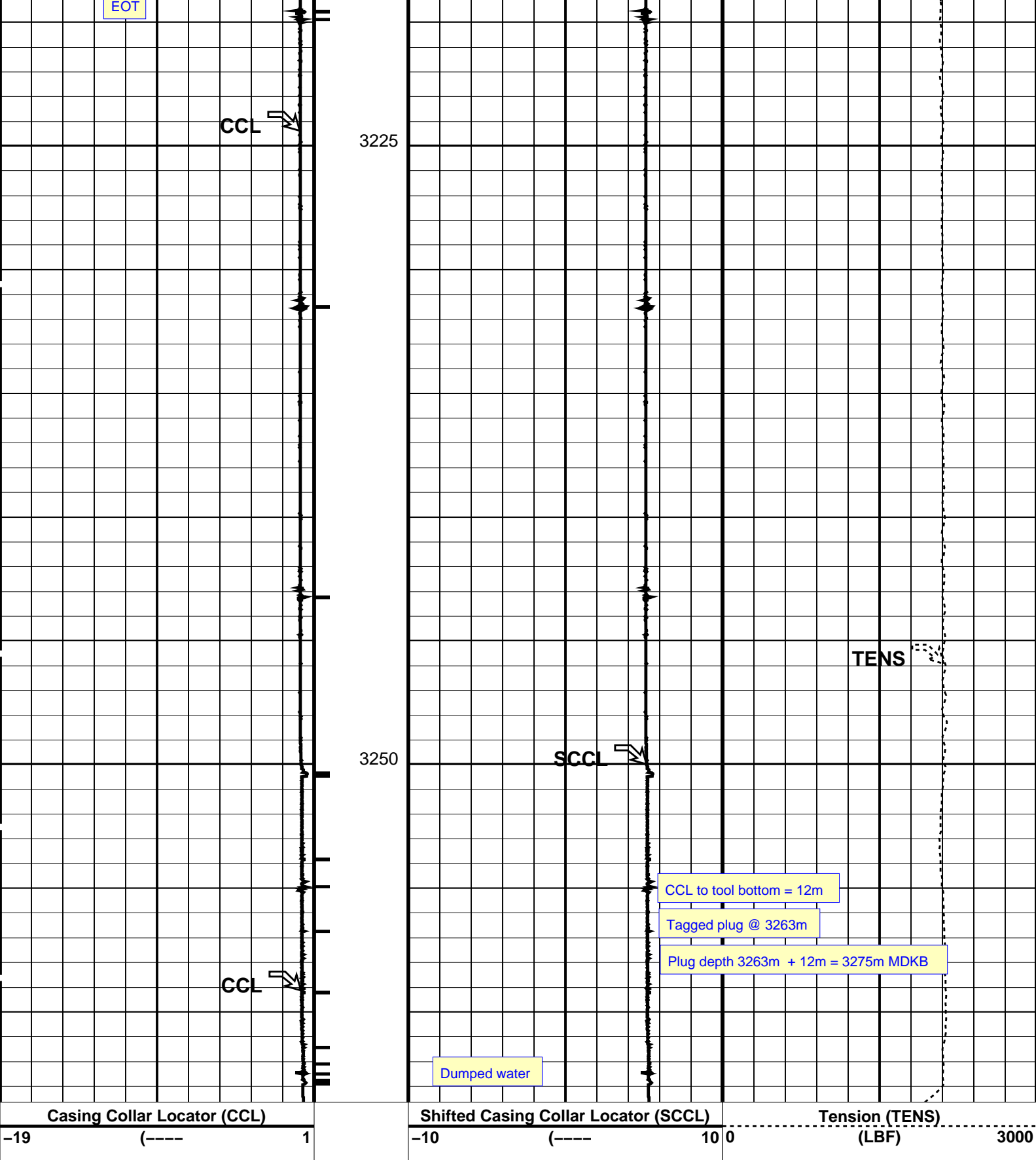
SHM_GUN	17C0-154	CCL-L	17C0-154
---------	----------	-------	----------

PIP SUMMARY

└─ Casing Collars

Time Mark Every 60 S





PIP SUMMARY

Time Mark Every 60 S

Casing Collars

Parameters		
DLIS Name	Description	Value
CCLD	CCL-L: Casing Collar Locator	
CCLT	CCL reset delay	12 IN
	CCL Detection Level	0.3 V

DO
PP

System and Miscellaneous
Depth Offset for Playback
Playback Processing

0.5
NORMAL
M

Format: PERFO Vertical Scale: 1:200 Graphics File Created: 15-Aug-2009 10:41

OP System Version: 17C0-154

SHM_GUN 17C0-154 CCL-L 17C0-154

Input DLIS Files

DEFAULT PERFO_162LUP FN:153 PRODUCER 15-Aug-2009 10:35 3263.2 M 3200.1 M

Output DLIS Files

DEFAULT PERFO_163PUP FN:154 PRODUCER 15-Aug-2009 10:41

Schlumberger

7" Posiset Plug Setting
Top of Seal @ 3275m MDKB

MAXIS Field Log

Output DLIS Files

DEFAULT CCL_142LUP FN:134 PRODUCER 15-Aug-2009 05:27

OP System Version: 17C0-154

MPEX-7" Posiset MPSU-CA 17C0-154
CCL-L 17C0-154

PIP SUMMARY

➤ MPSU Run Time Every 1 MN
➤ MPSU Run Time Every 10 MN

Time Mark Every 60 S

MPSU Head Voltage (HV)
250 (V) 350

MPSU Run Status (STAT)
0 (----10)

Tension (TENS)
2000 (LBF) 0

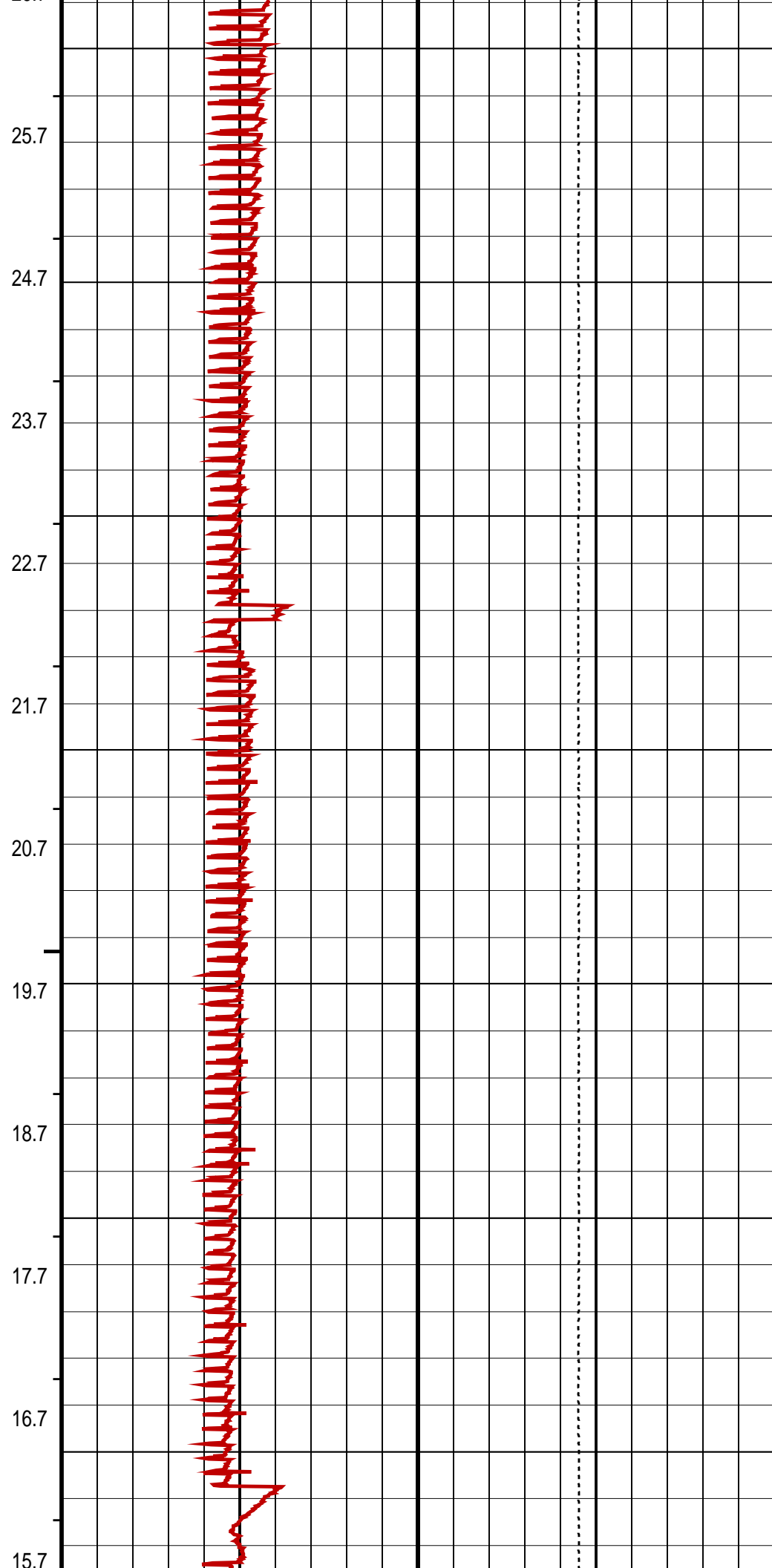
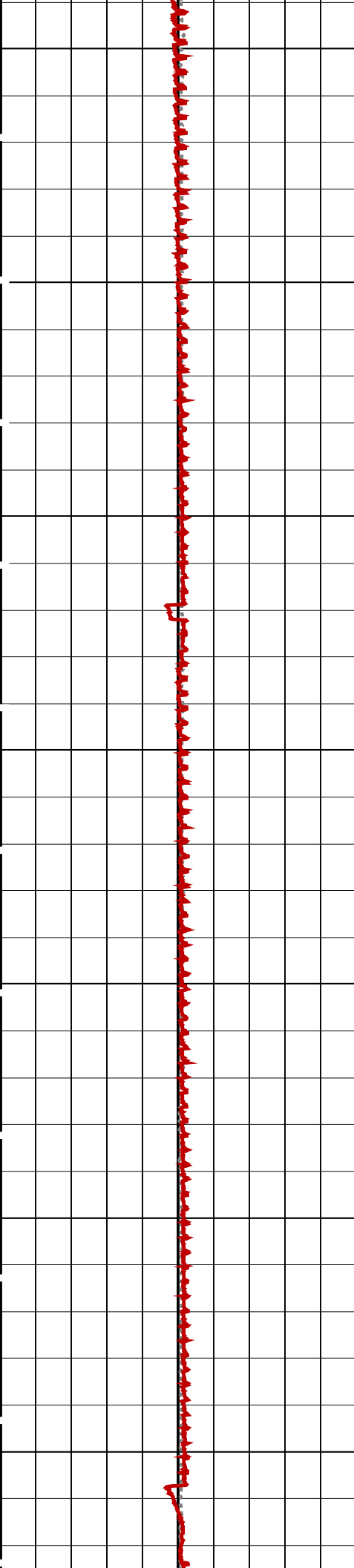
Differential Tension (DTEN)
-200 (LBF) 200

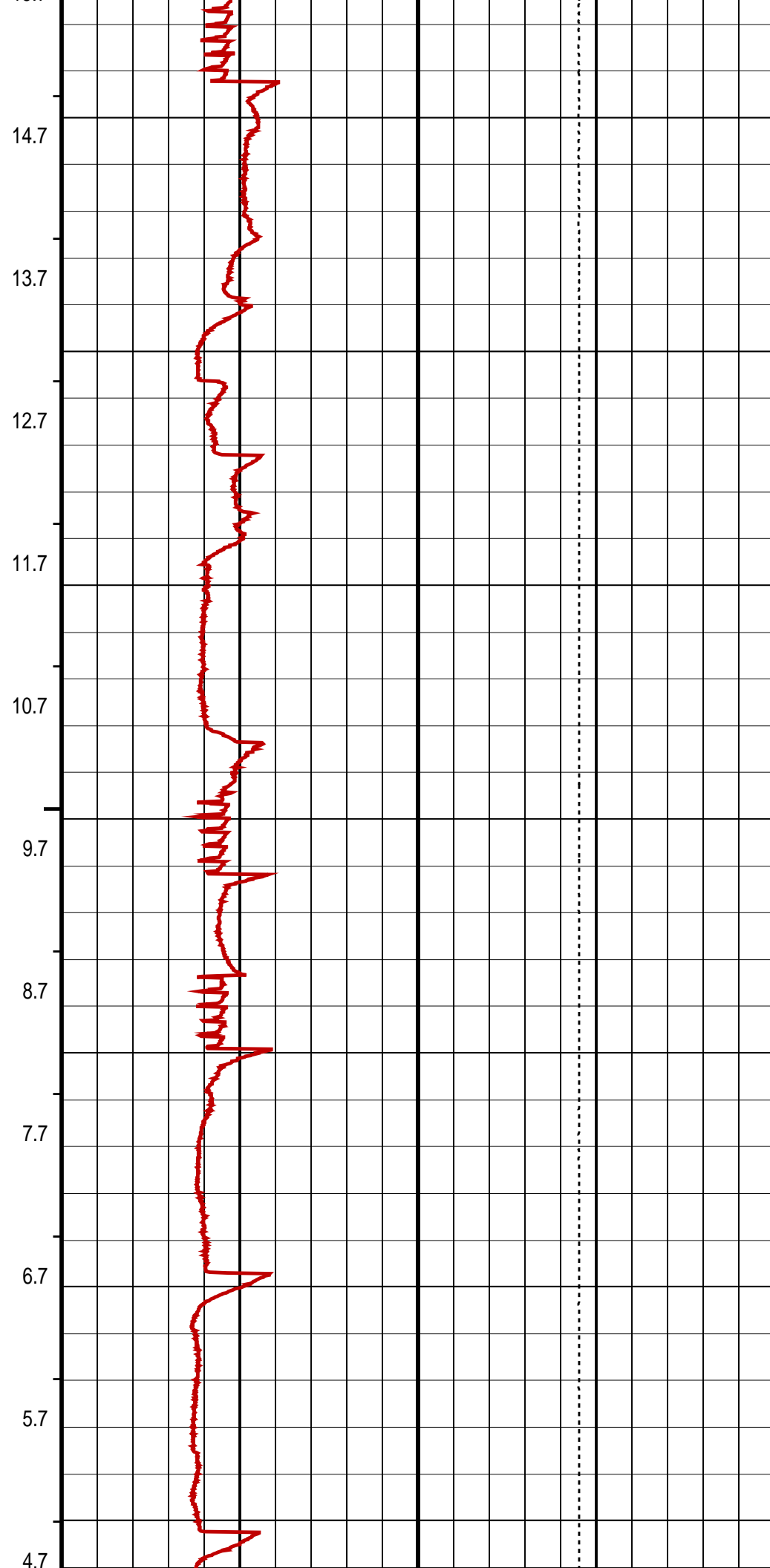
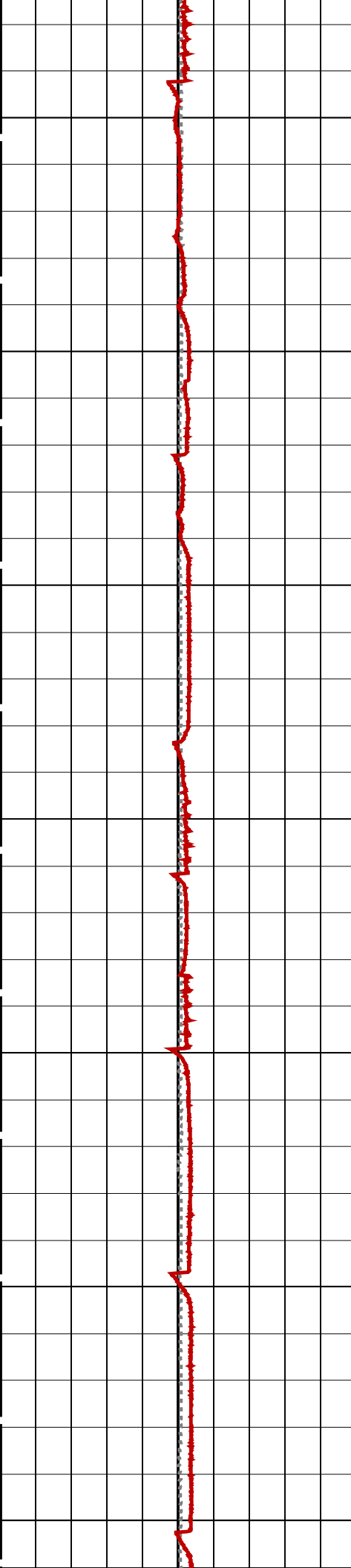
ON/Int From D3T to STAT

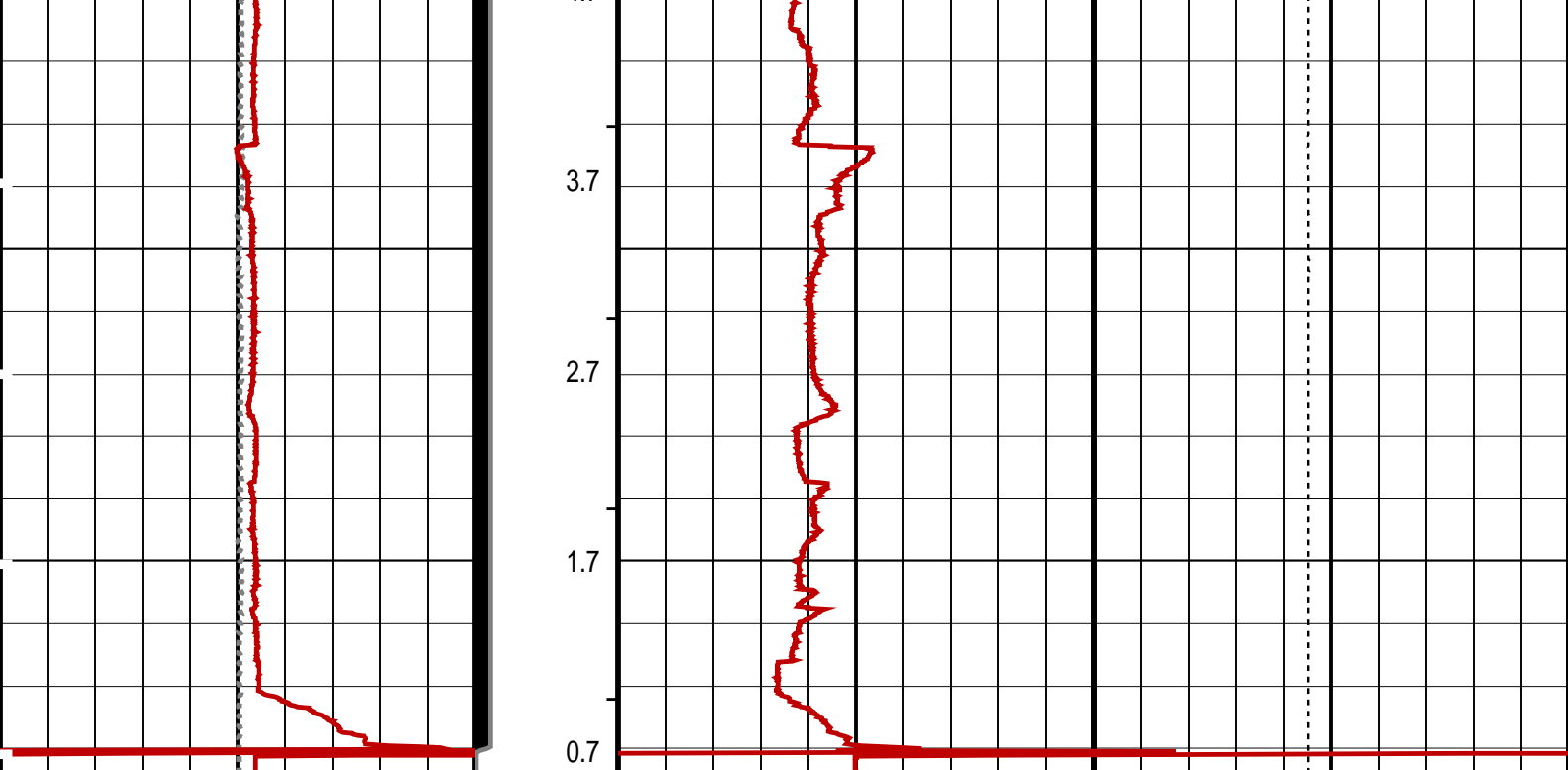
MPBM Cable Current (CCUR)
300 (MA) 700

27.7

26.7







Differential Tension (DTEN) (LBF)	ON/Int From D3T to STAT	MPBM Cable Current (CCUR) (MA)	Tension (TENS) (LBF)
-200 200		300 700	2000 0
MPSU Head Voltage (HV) (V)	MPSU Run Status (STAT)		
250 350	0 (----10)		
	RUN Time (RTIM) (MN)		

PIP SUMMARY

- ↵ MPSU Run Time Every 1 MN
- ↵ MPSU Run Time Every 10 MN

Time Mark Every 60 S

Parameters

DLIS Name	Description	Value
MPSU-CA: MECHANICAL PLUGBACK SETTING UNIT IPUMP	Intensifier Pump	TRUE

Format: MPBT Vertical Scale: 1:600 Graphics File Created: 15-Aug-2009 05:27

OP System Version: 17C0-154

MPEX-7" CCL-L	Posiset 17C0-154	MPSU-CA	17C0-154
------------------	---------------------	---------	----------

Output DLIS Files

DEFAULT	CCL_142LUP	FN:134 PRODUCER	15-Aug-2009 05:27
---------	------------	-----------------	-------------------



Log Down to Plug Set Depth
(3275m MDKB)

Input DLIS Files

DEFAULT Flip_CCL_145LUP PRODUCER 15-Aug-2009 06:27 3267.9 M 3201.9 M

Output DLIS Files

DEFAULT PERFO_148PUP FN:139 PRODUCER 15-Aug-2009 06:29 3267.9 M 3201.9 M

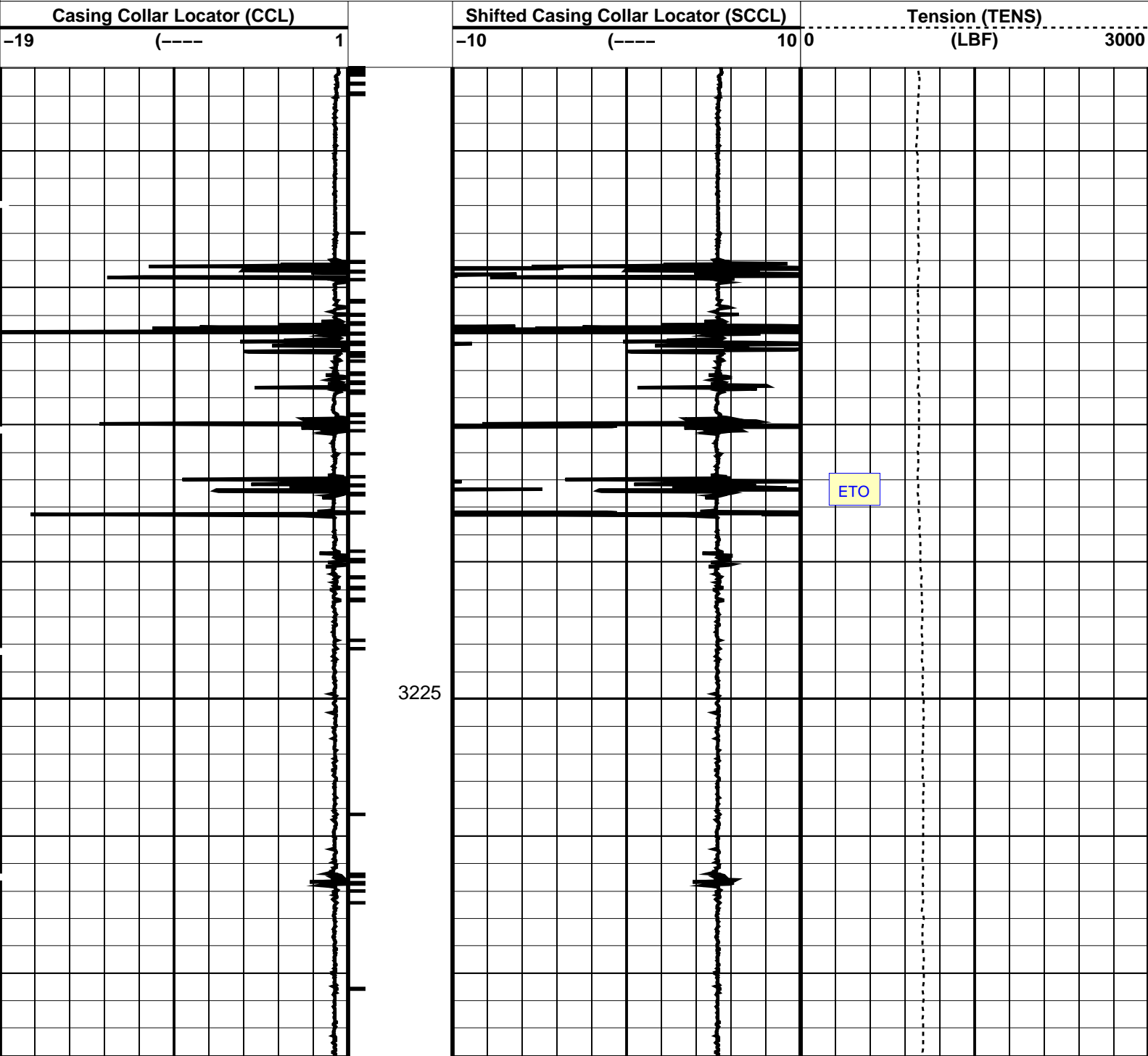
OP System Version: 17C0-154

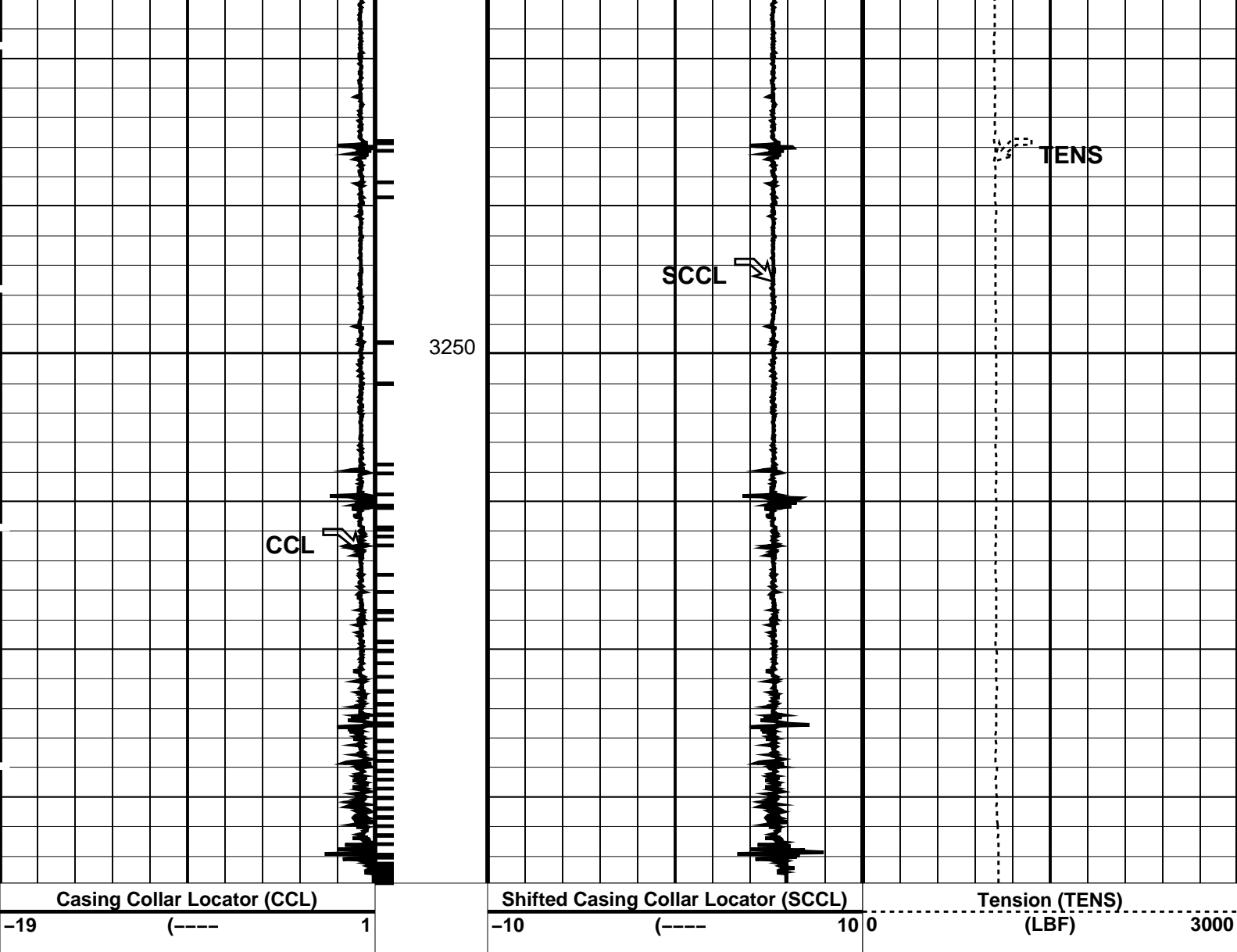
SHM_GUN 17C0-154 CCL-L 17C0-154

PIP SUMMARY

Casing Collars

Time Mark Every 60 S





PIP SUMMARY

Time Mark Every 60 S Casing Collars

Parameters

DLIS Name	Description	Value	
CCLD	CCL-L: Casing Collar Locator	12	IN
CCLT	CCL reset delay	0.3	V
	CCL Detection Level		
DO	System and Miscellaneous	0.0	M
PP	Depth Offset for Playback		
	Playback Processing	NORMAL	

Format: PERFO Vertical Scale: 1:200 Graphics File Created: 15-Aug-2009 06:29

OP System Version: 17C0-154

SHM_GUN 17C0-154 CCL-L 17C0-154

Input DLIS Files

DEFAULT Flip_CCL_145LUP PRODUCER 15-Aug-2009 06:27 3267.9 M 3201.9 M

Output DLIS Files

DEFAULT PERFO_148PUP FN:139 PRODUCER 15-Aug-2009 06:29



Dummy Plug Pass

MAXIS Field Log

Company: Esso Australia Pty Ltd Well: FTA A3

Input DLIS Files

DEFAULT PSP_125LUP FN:117 PRODUCER 15-Aug-2009 00:57 3281.5 M 3168.1 M

Output DLIS Files

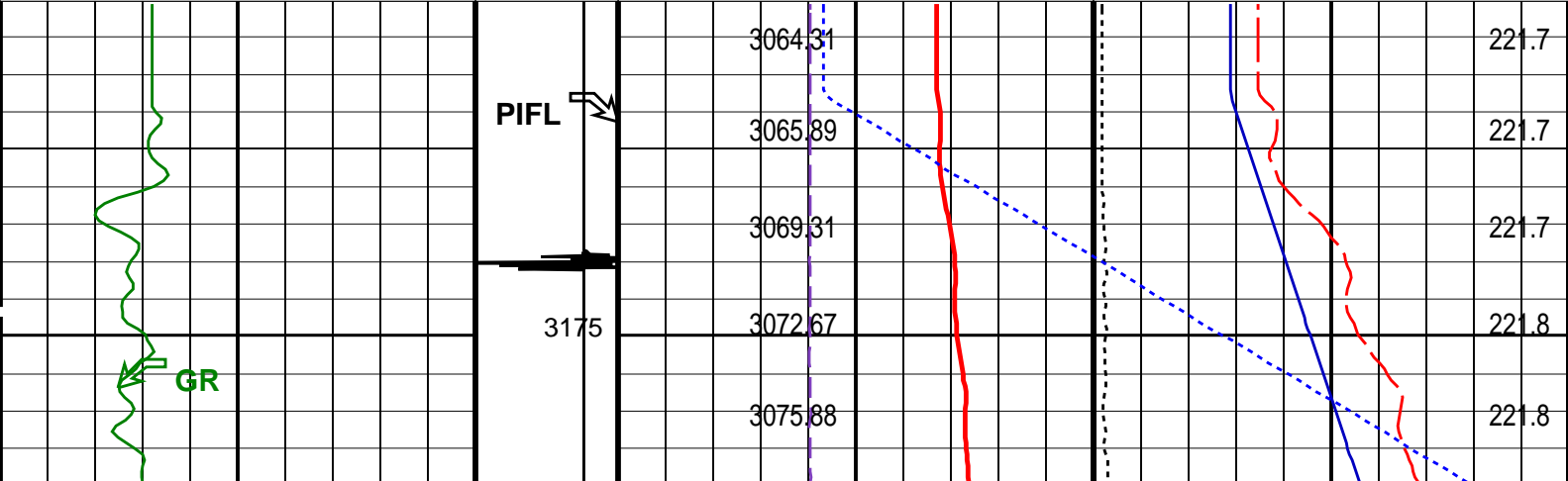
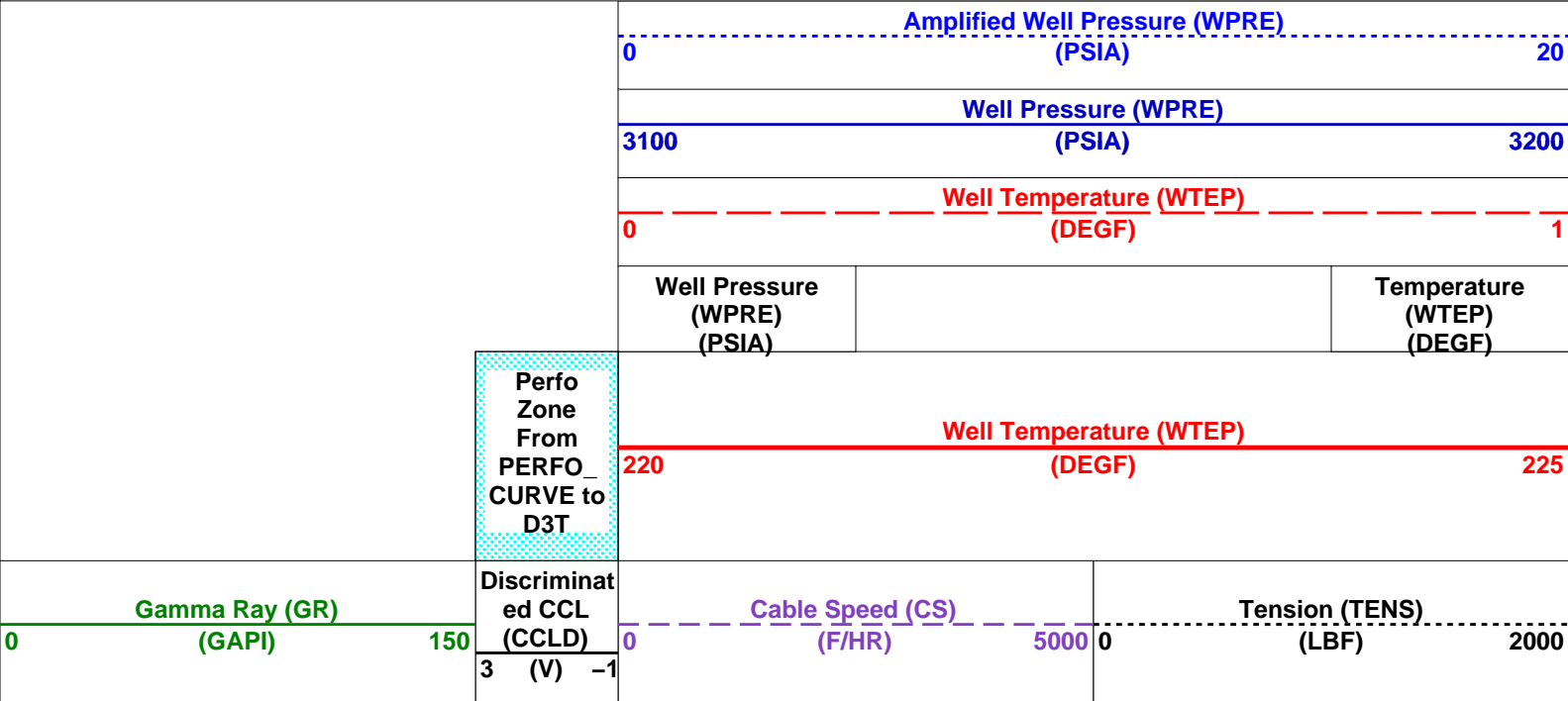
DEFAULT PSP_127PUP FN:119 PRODUCER 15-Aug-2009 01:10 3281.9 M 3166.0 M

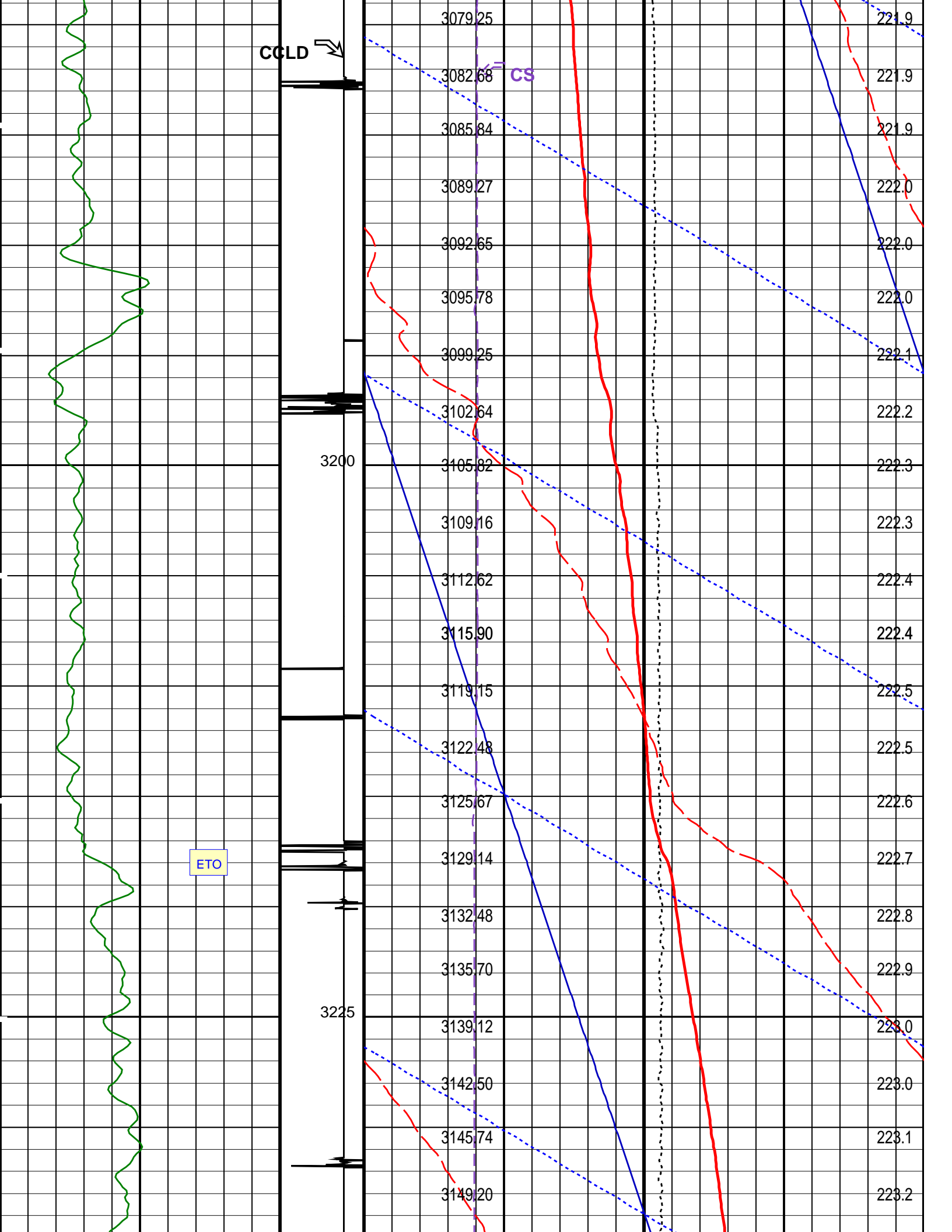
OP System Version: 17C0-154

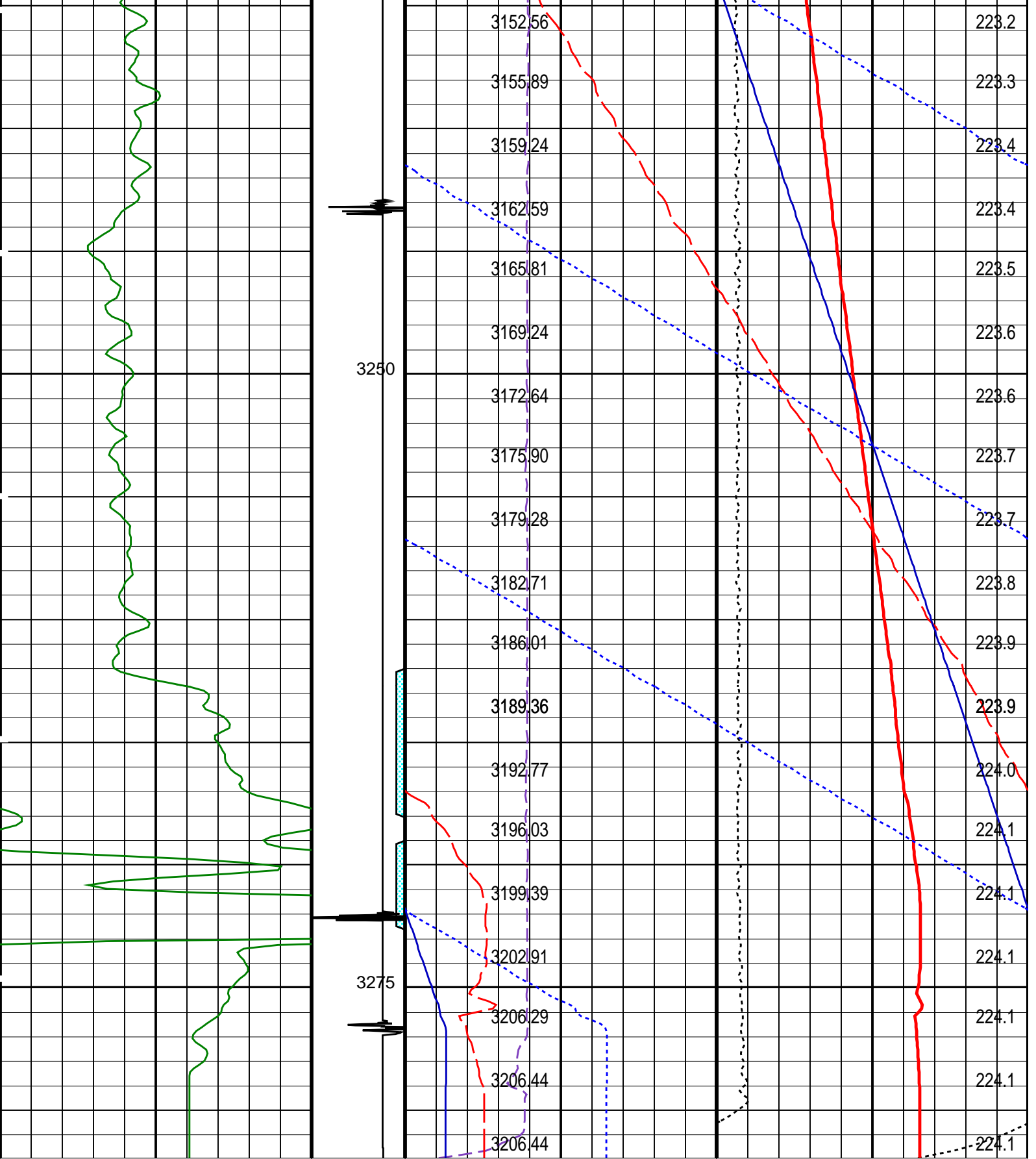
PSPT-B 17C0-154

PIP SUMMARY

Time Mark Every 60 S







Gamma Ray (GR) (GAPI)	Discriminat ed CCL (CCLD)	Cable Speed (CS) (F/HR)	Tension (TENS) (LBF)
0	3 (V) -1	0	0
150		5000	2000

Perfo Zone From PERFO_ CURVE to D3T	Well Temperature (WTEP) (DEGF)
	220
	225

	Well Pressure (WPRE) (PSIA)		Temperature (WTEP) (DEGF)
	Well Temperature (WTEP) (DEGF)		
0			1
Well Pressure (WPRE) (PSIA)			
3100			3200
Amplified Well Pressure (WPRE) (PSIA)			
0			20

PIP SUMMARY			
Time Mark Every 60 S			
Format: PSP_1		Vertical Scale: 1:200	Graphics File Created: 15-Aug-2009 01:10

OP System Version: 17C0-154							
PSPT-B		17C0-154					
Parameters							
DLIS Name		Description			Value		
System and Miscellaneous							
DO		Depth Offset for Playback			0.5	M	
PP		Playback Processing			NORMAL		
Input DLIS Files							
DEFAULT	PSP_125LUP	FN:117	PRODUCER	15-Aug-2009 00:57	3281.5 M	3168.1 M	
Output DLIS Files							
DEFAULT	PSP_127PUP	FN:119	PRODUCER	15-Aug-2009 01:10			

Company:	Esso Australia Pty Ltd	Schlumberger
Well:	FTA A3	
Field:	Gippsland Basin	
Rig:	Prod 4 / Crane	
Country:	Australia	
7" posiset Plug Setting Record		
Water & Cement Bailer Record		
14-Aug-2009		