

Company: Esso Australia Pty Ltd

Well: SNA M29

Field: Snapper

Rig: Rig 22/ISS

Country: Australia

2.5" Powercutter
Tubing Cut Record
20-Aug-2009

Rig: Rig 22/ISS
Field: Snapper
Location: Bass Strait
Well: SNA M29
Company: Esso Australia Pty Ltd

| LOCATION | | | |
|--------------------|-------------------------|--------|---------------------------|
| State: Victoria | Bass Strait | Elev.: | K.B. 39.61 m |
| | Gippsland | | G.L. -55.00 m |
| | Basin | | D.F. 39.61 m |
| | Permanent Datum: | MSL | Elev.: 0.00 m |
| | Log Measured From: | DF | 39.61 m above Perm. Datum |
| | Drilling Measured From: | DF | |

| | | |
|---------------------------------|--------------------------------|-------------------------------|
| Max. Well Deviation 85.1 deg | Longitude 148° 1' 31.733" E | Latitude 38° 11' 37.793" S |
|---------------------------------|--------------------------------|-------------------------------|

| | | | |
|-------------------------------|----------------------|------|------|
| Logging Date | 23-Aug-2009 | | |
| Run Number | One | | |
| Depth Driller | 5845 m | | |
| Schlumberger Depth | | | |
| Bottom Log Interval | 5058 m | | |
| Top Log Interval | 5006.8 m | | |
| Casing Fluid Type | Sea Water | | |
| Salinity | | | |
| Density | 8.55 g/cm3 | | |
| Fluid Level | | | |
| BIT/CASING/TUBING STRING | | | |
| Bit Size | 12.250 in | | |
| From | 2002.8 m | | |
| To | 5060 m | | |
| Casing/Tubing Size | 3.500 in | | |
| Weight | 47 lbm/ft | | |
| Grade | 80 | | |
| From | 20.23 m | | |
| To | 5053 m | | |
| Maximum Recorded Temperatures | | | |
| Logger On Bottom | 23-Aug-2009 | Time | 0:27 |
| Unit Number | 3827 | AUSL | |
| Recorded By | M. Pratt, B. Donahoe | | |
| Witnessed By | A. Smythe, D. Madden | | |

| PVT DATA | | | | Run 1 | Run 2 | Run 3 |
|-------------------------------|--|----------|--|----------|-------|-------|
| Oil Density | | | | | | |
| Water Salinity | | | | | | |
| Gas Gravity | | | | | | |
| Bo | | | | | | |
| Bw | | | | | | |
| 1/Bg | | | | | | |
| Bubble Point Pressure | | | | | | |
| Bubble Point Temperature | | | | | | |
| Solution GOR | | | | | | |
| Maximum Deviation | | | | 85.1 deg | | |
| CEMENTING DATA | | | | | | |
| Primary/Squeeze | | | | Primary | | |
| Casing String No | | | | | | |
| Lead Cement Type | | | | | | |
| Volume | | | | | | |
| Density | | | | | | |
| Water Loss | | | | | | |
| Additives | | | | | | |
| Tail Cement Type | | | | | | |
| Volume | | | | | | |
| Density | | | | | | |
| Water Loss | | | | | | |
| Additives | | | | | | |
| Expected Cement Top | | | | | | |
| Logging Date | | | | | | |
| Run Number | | | | | | |
| Depth Driller | | | | | | |
| Schlumberger Depth | | | | | | |
| Bottom Log Interval | | | | | | |
| Top Log Interval | | | | | | |
| Casing Fluid Type | | | | | | |
| Salinity | | | | | | |
| Density | | | | | | |
| Fluid Level | | | | | | |
| BIT/CASING/TUBING STRING | | | | | | |
| Bit Size | | | | | | |
| From | | | | | | |
| To | | | | | | |
| Casing/Tubing Size | | | | | | |
| Weight | | | | | | |
| Grade | | | | | | |
| From | | | | | | |
| To | | | | | | |
| Maximum Recorded Temperatures | | | | | | |
| Logger On Bottom | | Time | | | | |
| Unit Number | | Location | | | | |
| Recorded By | | | | | | |
| Witnessed By | | | | | | |

DEPTH SUMMARY LISTING

Date Created: 23-AUG-2009 4:21:14

Depth System Equipment

| Depth Measuring Device | | Tension Device | | Logging Cable | |
|---------------------------|------------|-------------------------------|-------------|--------------------|----------------|
| Type: | IDW-H | Type: | CMTD-B/A | Type: | 2-32ZT |
| Serial Number: | 797 | Serial Number: | 1711 | Serial Number: | 753112 |
| Calibration Date: | 1-May-2009 | Calibration Date: | 10-Aug-2005 | Length: | 6043 M |
| Calibrator Serial Number: | 30 | Calibrator Serial Number: | 1173 | | |
| Calibration Cable Type: | 2-32ZT | Number of Calibration Points: | 10 | Conveyance Method: | Wireline |
| Wheel Correction 1: | -1 | Calibration RMS: | 18 | Rig Type: | Offshore Fixed |
| Wheel Correction 2: | -1 | Calibration Peak Error: | 40 | | |

Depth Control Parameters

| | |
|---------------------------|----------------------------|
| Log Sequence: | Subsequent Log In the Well |
| Reference Log Name: | N/A |
| Reference Log Run Number: | N/A |
| Reference Log Date: | N/A |

Depth Control Remarks

| |
|---|
| 1. Log correlated to completion skematic furnished by client. |
| 2. |
| 3. |
| 4. |
| 5. |
| 6. |

DISCLAIMER

THE USE OF AND RELIANCE UPON THIS RECORDED-DATA BY THE HEREIN NAMED COMPANY (AND ANY OF ITS AFFILIATES, PARTNERS, REPRESENTATIVES, AGENTS, CONSULTANTS AND EMPLOYEES) IS SUBJECT TO THE TERMS AND CONDITIONS AGREED UPON BETWEEN SCHLUMBERGER AND THE COMPANY, INCLUDING: (a) RESTRICTIONS ON USE OF THE RECORDED-DATA; (b) DISCLAIMERS AND WAIVERS OF WARRANTIES AND REPRESENTATIONS REGARDING COMPANY'S USE OF AND RELIANCE UPON THE RECORDED-DATA; AND (c) CUSTOMER'S FULL AND SOLE RESPONSIBILITY FOR ANY INFERENCE DRAWN OR DECISION MADE IN CONNECTION WITH THE USE OF THIS RECORDED-DATA.

OTHER SERVICES1

| | |
|------|------|
| OS1: | None |
| OS2: | |
| OS3: | |
| OS4: | |
| OS5: | |

REMARKS: RUN NUMBER 1

| |
|--|
| Log correlated to Tubing Tally incorporated in approved EXXONMobil Program. |
| Objective: Rig up wireline RIH with a 2.5" Powercutter with a 1-11/16" CCL and cut the 3-1/2" tubing @ 50##M MDKB. Maximum Deviation 85.1 deg @ 3370m. Powercutter required to be pump down to reach target depth. |
| Fired with Secure detonator. |
| Tubing cut with Powercutter @ 5029.0 m MDKB |
| CCL to cutter 2.6 m |

CCL Stop Depth = 5026.4 m MDKB

Schlumberger Crew;

Days: G. Brady, D. Watts

Nights: K. Kerr, C. Sheils

```

RUN 1
SERVICE ORDER #: 4500585638
PROGRAM VERSION: 17C0-154
FLUID LEVEL:

```

SERVICE ORDER #:
PROGRAM VERSION:
FLUID LEVEL:

START

LOGGED INTERVAL

STOP

| EQUIPMENT | DESCRIPTION |
|-----------|-------------|
| 1 | ... |
| 2 | ... |
| 3 | ... |
| 4 | ... |
| 5 | ... |
| 6 | ... |
| 7 | ... |
| 8 | ... |
| 9 | ... |
| 10 | ... |
| 11 | ... |
| 12 | ... |
| 13 | ... |
| 14 | ... |
| 15 | ... |
| 16 | ... |
| 17 | ... |
| 18 | ... |
| 19 | ... |
| 20 | ... |
| 21 | ... |
| 22 | ... |
| 23 | ... |
| 24 | ... |
| 25 | ... |
| 26 | ... |
| 27 | ... |
| 28 | ... |
| 29 | ... |
| 30 | ... |
| 31 | ... |
| 32 | ... |
| 33 | ... |
| 34 | ... |
| 35 | ... |
| 36 | ... |
| 37 | ... |
| 38 | ... |
| 39 | ... |
| 40 | ... |
| 41 | ... |
| 42 | ... |
| 43 | ... |
| 44 | ... |
| 45 | ... |
| 46 | ... |
| 47 | ... |
| 48 | ... |
| 49 | ... |
| 50 | ... |
| 51 | ... |
| 52 | ... |
| 53 | ... |
| 54 | ... |
| 55 | ... |
| 56 | ... |
| 57 | ... |
| 58 | ... |
| 59 | ... |
| 60 | ... |
| 61 | ... |
| 62 | ... |
| 63 | ... |
| 64 | ... |
| 65 | ... |
| 66 | ... |
| 67 | ... |
| 68 | ... |
| 69 | ... |
| 70 | ... |
| 71 | ... |
| 72 | ... |
| 73 | ... |
| 74 | ... |
| 75 | ... |
| 76 | ... |
| 77 | ... |
| 78 | ... |
| 79 | ... |
| 80 | ... |
| 81 | ... |
| 82 | ... |
| 83 | ... |
| 84 | ... |
| 85 | ... |
| 86 | ... |
| 87 | ... |
| 88 | ... |
| 89 | ... |
| 90 | ... |
| 91 | ... |
| 92 | ... |
| 93 | ... |
| 94 | ... |
| 95 | ... |
| 96 | ... |
| 97 | ... |
| 98 | ... |
| 99 | ... |
| 100 | ... |

RUN 2

SURFACE EQUIPMENT

WITM (SHM)

DOWNHOLE EQUIPMENT

MH-22
MH-22

5.65

AH-38

5.17

AH-ERS
AH-ERS

5.09

EQF-43
EQF-43

4.71



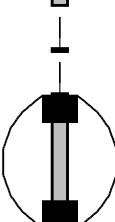
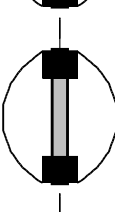
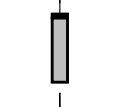
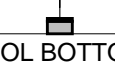
CCL-L
CCL-L

___ TOOL ZERO

2.88

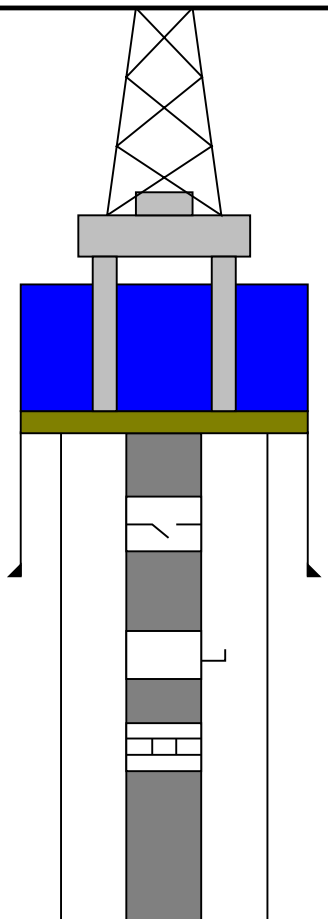
AH-WPSA
AH-WPSA

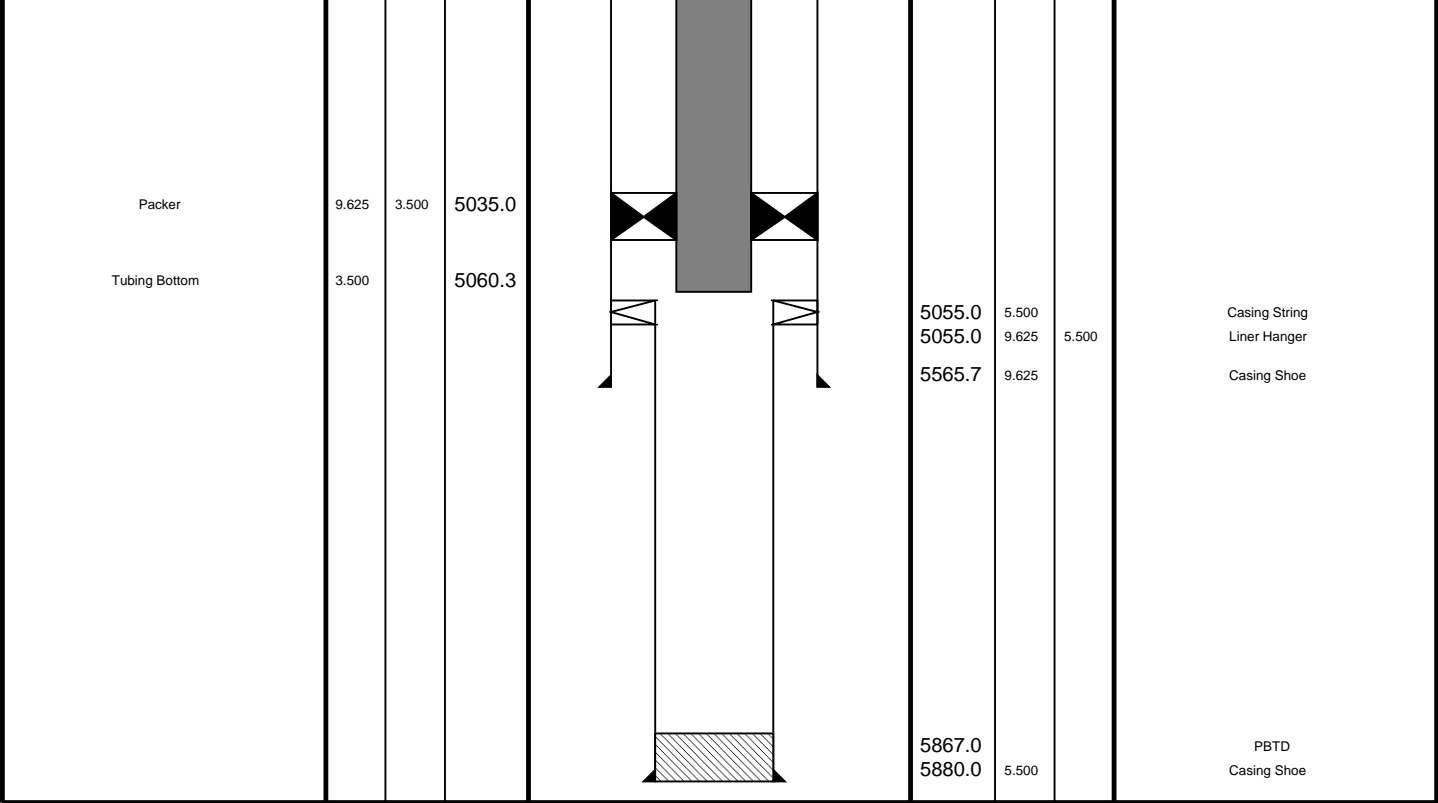
2.42

| | | |
|---------------------|---|------|
| AH-122 |  | 1.85 |
| AH-Shooting Adapter |  | 1.72 |
| AH-Shock Sub |  | 1.70 |
| AH-Shock Sub | | |
| AH-Shock Sub |  | 1.05 |
| AH-Shock Sub | | |
| AH-Secure Sub |  | 0.41 |
| AH-Secure Sub | | |
| SHM_GUN |  | 0.08 |
| TOOL BOTTOM | | |

MAXIMUM STRING DIAMETER 2.50 IN
 MEASUREMENTS RELATIVE TO TOOL ZERO
 ALL LENGTHS IN METERS

| | | | |
|----------|--------------------|------------------|----------------|
| Client: | Esso Australia Ltd | Drawing Date: | 8/23/2009 |
| Well: | M29 | API #: | |
| Field: | Snapper | Rig Name: | Rig 22 |
| State: | Victoria | Reference Datum: | Mean Sea Level |
| Country: | Australia | Elevation: | 39.6 m |

| Production String | (in) | | | Well Schematic | (m) | | | Casing String |
|-------------------------|-------|----|-------|---|--------|--------|----|---------------|
| | OD | ID | MD | | MD | OD | ID | |
| Derrick Floor Elevation | | | 39.6 |  | | | | |
| Mean Sea Level | | | 0.0 | | | | | |
| Tubing | 3.500 | | 0.0 | | 0.0 | 13.625 | | Casing String |
| SSSV | 3.500 | | 433.3 | | | | | |
| SPM | 3.500 | | 770.4 | | 2002.8 | 13.375 | | Casing Shoe |
| No Go | 3.500 | | 793.0 | | | | | |



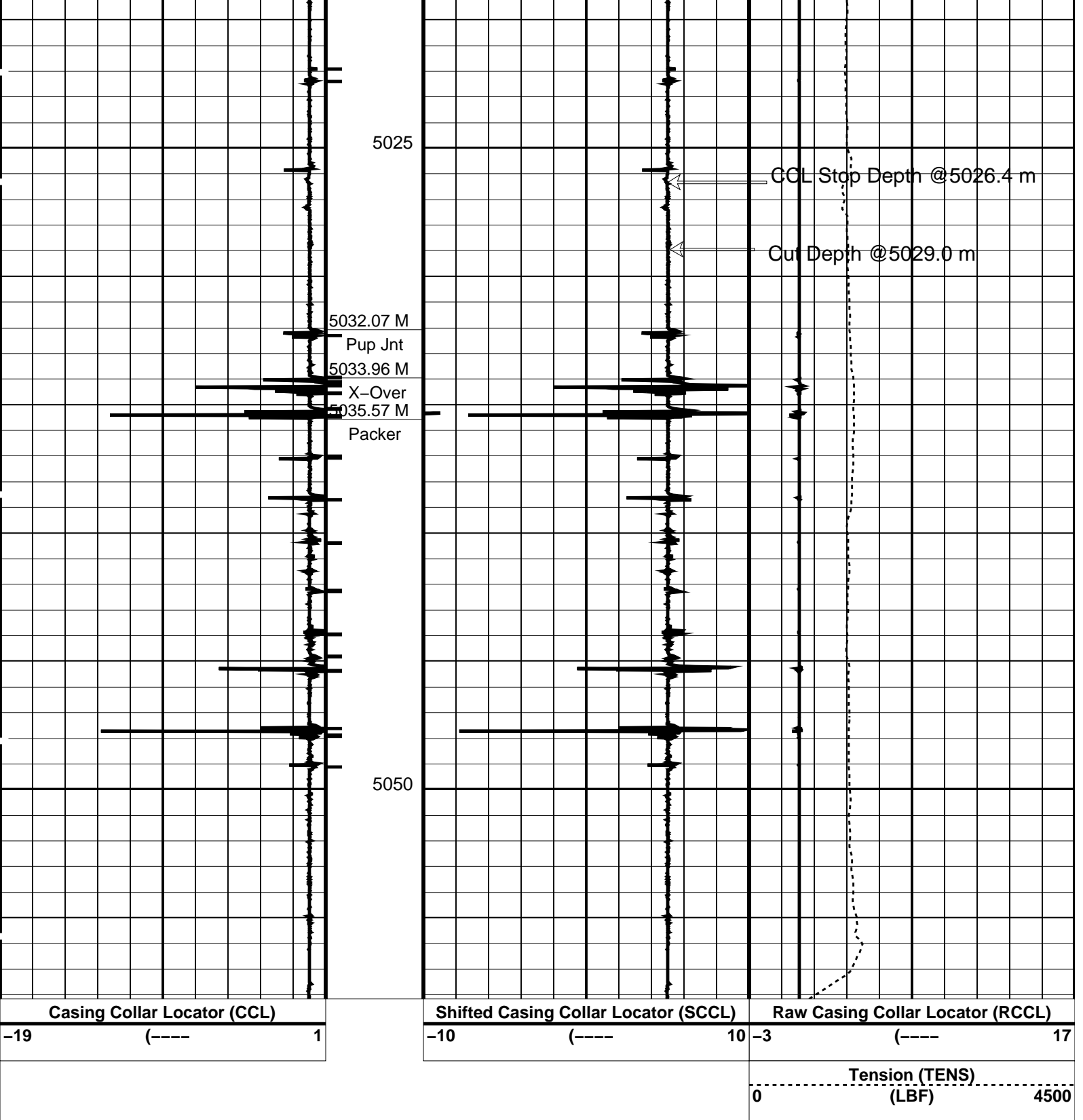
Schlumberger

Job Events Summary

MAXIS Field Log

Job Event Summary

| Add | Event | Time | Comment |
|-----|--------------------|-------------------|----------------|
| Yes | Rig Up Started | 22-Aug-2009 17:00 | Start Rig Up |
| Yes | Begin Descent | 22-Aug-2009 20:30 | RIH |
| Yes | Begin Descent | 23-Aug-2009 0:30 | Shoot and POOH |
| Yes | Begin Descent | 23-Aug-2009 2:30 | OOH |
| Yes | Rig Down Completed | 23-Aug-2009 3:30 | Complete |



PIP SUMMARY

└─ Casing Collars

Time Mark Every 60 S

Parameters

| DLIS Name | Description | Value |
|------------------------------|---------------------|-------|
| CCL-L: Casing Collar Locator | | |
| CCLD | CCL reset delay | 12 IN |
| CCLT | CCL Detection Level | 0.3 V |

Format: CCLLog Vertical Scale: 1:200

Graphics File Created: 23-Aug-2009 00:12

| | | | |
|--|------------------------|--------------|----------------------------|
| SHM_GUN | 17C0-154 | CCL-L | 17C0-154 |
| Output DLIS Files | | | |
| DEFAULT | PERFO_026LUP | FN:25 | PRODUCER 23-Aug-2009 00:12 |
| Company: | Esso Australia Pty Ltd | Schlumberger | |
| Well: | SNA M29 | | |
| Field: | Snapper | | |
| Rig: | Rig 22/ISS | | |
| Country: | Australia | | |
| 2.5" Powercutter Tubing Cut Record 20-Aug-2009 | | | |