

Company: Esso Australia Pty Ltd.

Well: A1A

Field: Snapper

Rig: Prod4 / Crane

Country: Australia

RST-C Sigma Survey

Rig: Prod4 / Crane	
Field: Snapper	
Location: Gippsland	
Well: A1A	
Company: Esso Australia Pty Ltd.	
LOCATION	
Gippsland	Elev.: K.B. 41.68 m
Basin	G.L. -55.00 m
Bass Strait	D.F. 41.68 m
Permanent Datum:	M.S.L.
Log Measured From:	D.F.
Drilling Measured From:	D.F.
State: Victoria	Max. Well Deviation 37 deg
	Longitude 148 10'126.72"E
	Latitude 038 11'43.23"S

Logging Date	12-May-2009		
Run Number	1		
Depth Driller	2819 m		
Schlumberger Depth	2735 m		
Bottom Log Interval	2735 m		
Top Log Interval	2300 m		
Casing Fluid Type	Production Fluids		
Salinity			
Density			
Fluid Level	0 m		
BIT/CASING/TUBING STRING			
Bit Size	9.875 in		
From	664 m		
To	2819 m		
Casing/Tubing Size	7.000 in		
Weight	26 lbn/ft		
Grade	L-80		
From	21.9 m		
To	2800 m		
Maximum Recorded Temperatures	248 degF		
Logger On Bottom	19-May-2009	Time	12:00
Unit Number	889	Location	Prod4 / Ausl
Recorded By	B.Donahoe.		
Witnessed By	B.White		

	Oil Density	Run 1		
	Water Salinity			
	Gas Gravity			
	Bo			
	Bw			
	1/Bg			
	Bubble Point Pressure			
	Bubble Point Temperature			
	Solution GOR			
	Maximum Deviation	37 deg		
	CEMENTING DATA			
	Primary/Squeeze	Primary		
	Casing String No			
	Lead Cement Type			
	Volume			
	Density			
	Water Loss			
	Additives			
	Tail Cement Type			
	Volume			
	Density			
	Water Loss			
	Additives			
	Expected Cement Top			
	Logging Date			
	Run Number			
	Depth Driller			
	Schlumberger Depth			
	Bottom Log Interval			
	Top Log Interval			
	Casing Fluid Type			
	Salinity			
	Density			
	Fluid Level			
	BIT/CASING/TUBING STRING			
	Bit Size			
	From			
	To			
	Casing/Tubing Size			
	Weight			
	Grade			
	From			
	To			
	Maximum Recorded Temperatures			
	Logger On Bottom	Time		
	Unit Number	Location		
	Recorded By			
	Witnessed By			

PST Survey: HUID: 2735m MDKB SRHP: 2447.67psia SRHT: 248deg
-------------------------------------------------------------

RSCH-A 471  
RSC-C 488  
RSS-A 473  
RSXH-A 500  
RSX-C 490


RSC-A Far  
RSC-A PNG  
RSC-A Nea  
RSX-A PNG

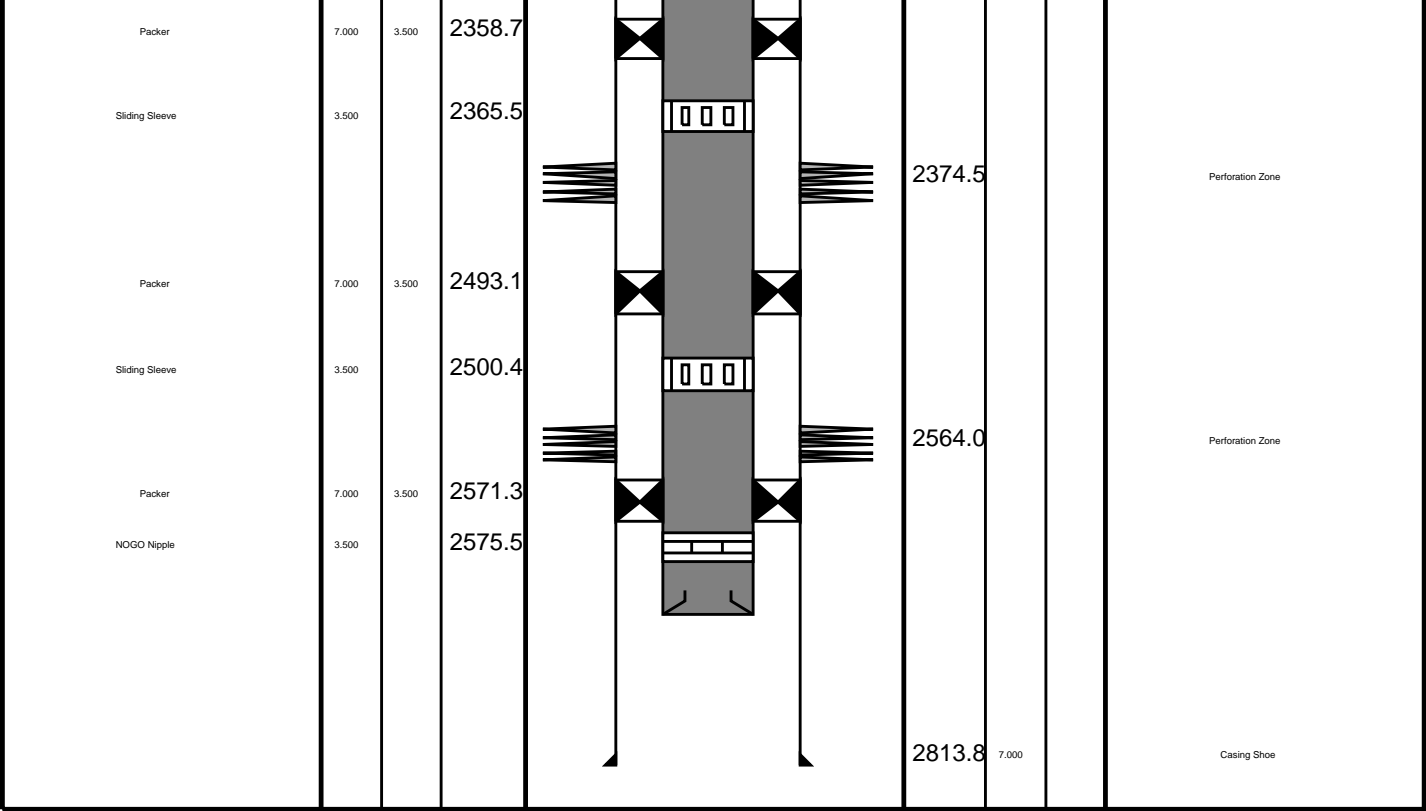
4.24

4.09

Tension HV 0.00  
TOOL ZERO

MAXIMUM STRING DIAMETER 1.72 IN  
MEASUREMENTS RELATIVE TO TOOL ZERO  
ALL LENGTHS IN METERS

Production String	(in)		(m)	Well Schematic			(m)		(in)	Casing String
	OD	ID	MD				MD	OD	ID	
Tubing	3.500		21.7		21.9	12.000		Casing String		
SSSV	3.500		452.0							
Side Pocket	3.500		498.0							
					664.1	10.750		Casing Shoe		
Side Pocket	3.500		871.8							
Side Pocket	3.500		1051.4							
Side Pocket	3.500		1201.9							
Landing Nipple	3.500		1218.2							



# Job Event Summary

MAXIS Field Log

Schlumberger Job Event Summary						
Time		Elapsed Time		Depth (M)		File
Log Pass (up)	19-May-2009 11:08	000:22	2733.6 - 2291.6	RST_PSP_016LUP		
Log Pass (up)	20-May-2009 9:38	001:33	2736.0 - 2287.1	RST_PSP_043LUP		

Well: A1A

## Input DLIS Files

DEFAULT	RST_PSP_043LUP	FN:39	PRODUCER	20-May-2009 09:38	2736.0 M	2287.1 M
---------	----------------	-------	----------	-------------------	----------	----------

## Output DLIS Files

DEFAULT	RST_PSP_046PUP	FN:42	PRODUCER	20-May-2009 11:52	2738.0 M	2283.6 M
---------	----------------	-------	----------	-------------------	----------	----------

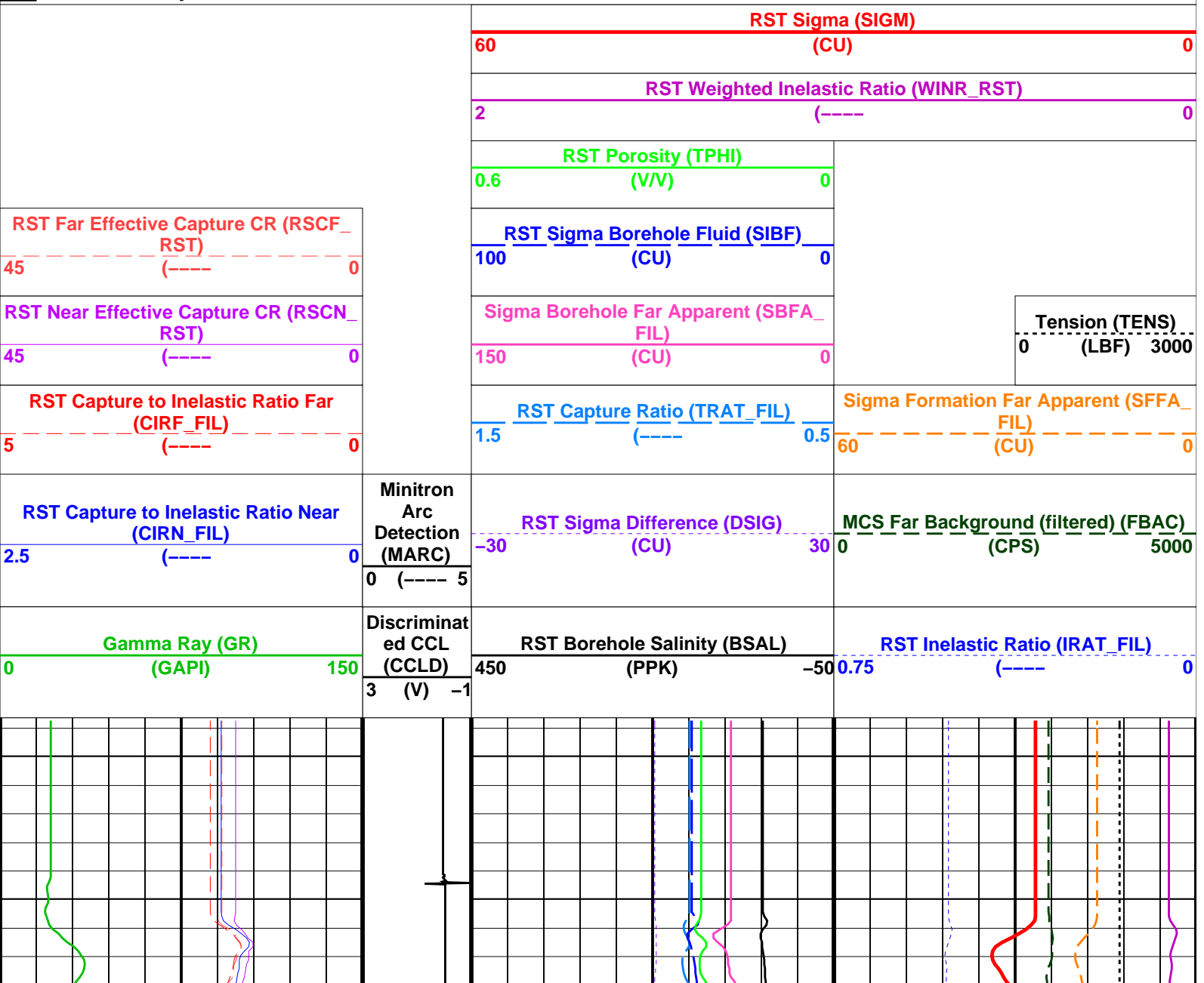
**OP System Version: 16C0-147**

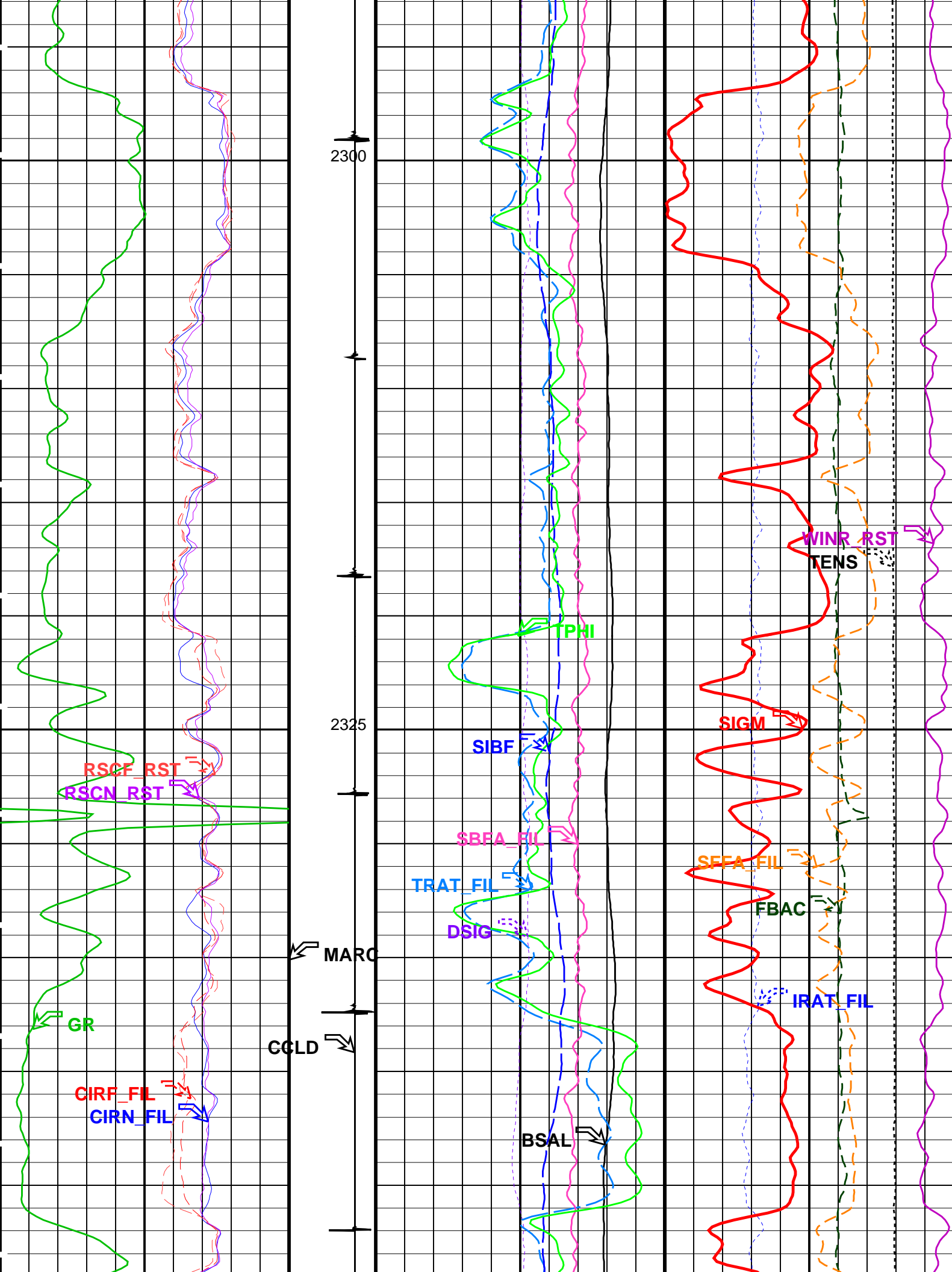
## MCM

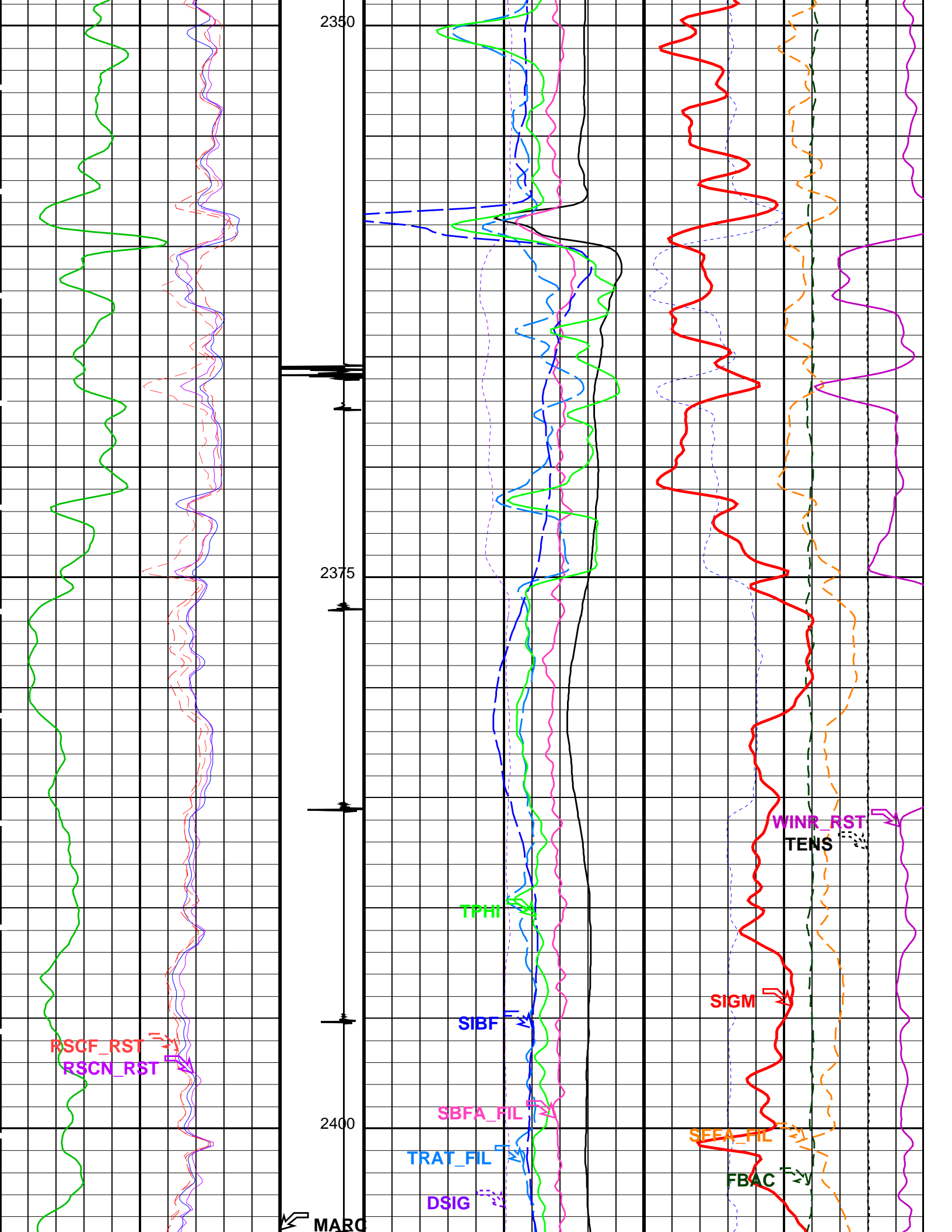
RST-C                      SRPC-3777-Q4\_2008\_OP16                      PSPT-B                      SRPC-3777-Q4\_2008\_OP16

## PIP SUMMARY

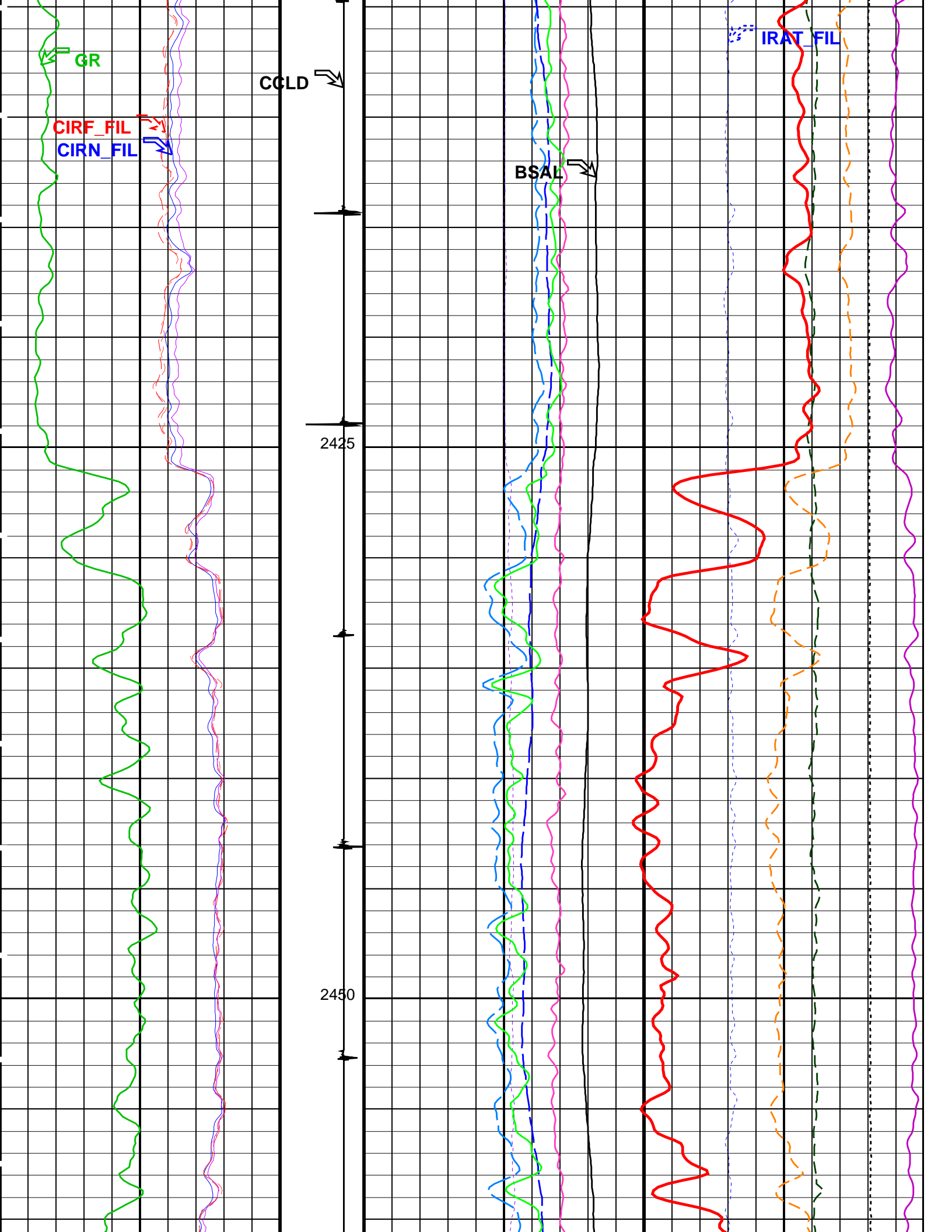
**Time Mark Every 60 S**

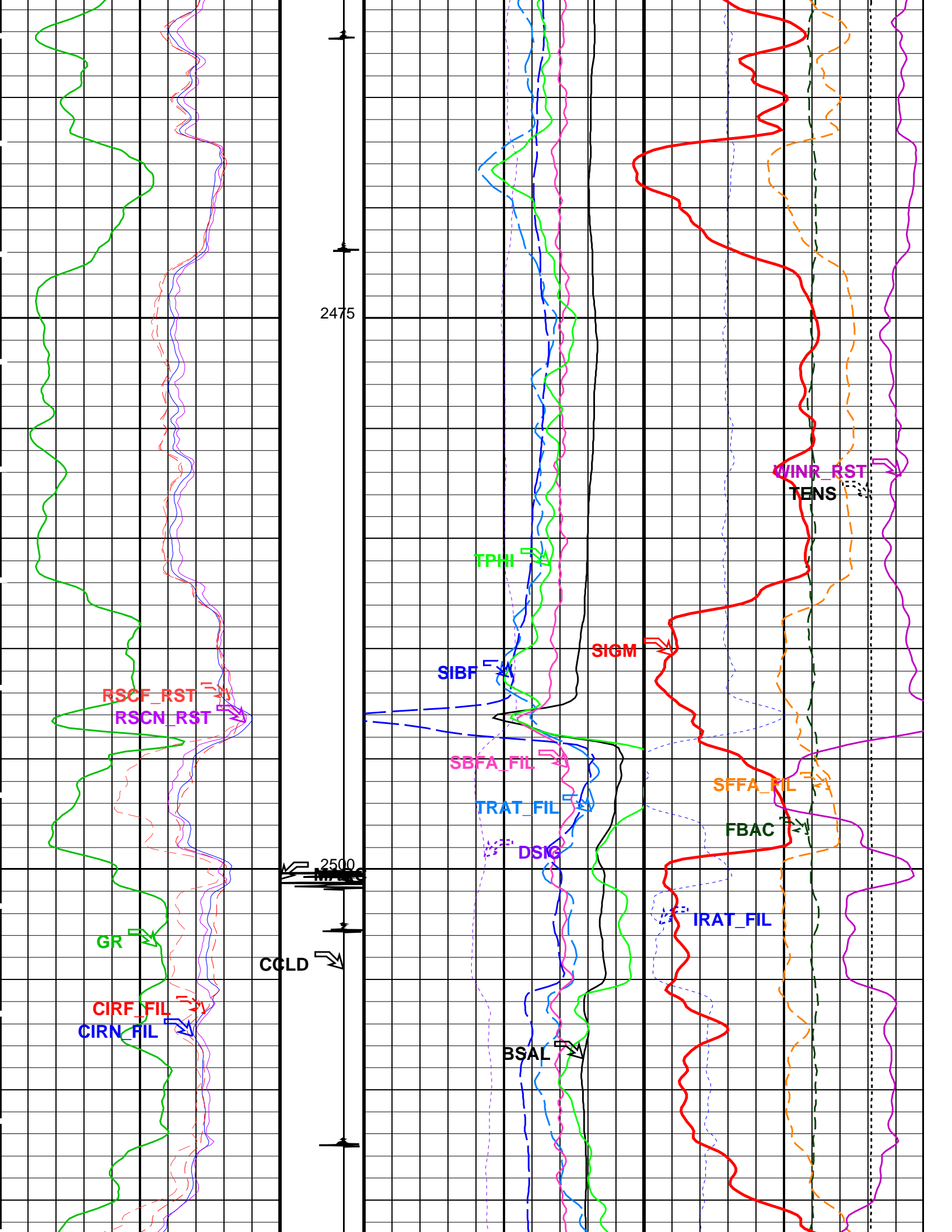


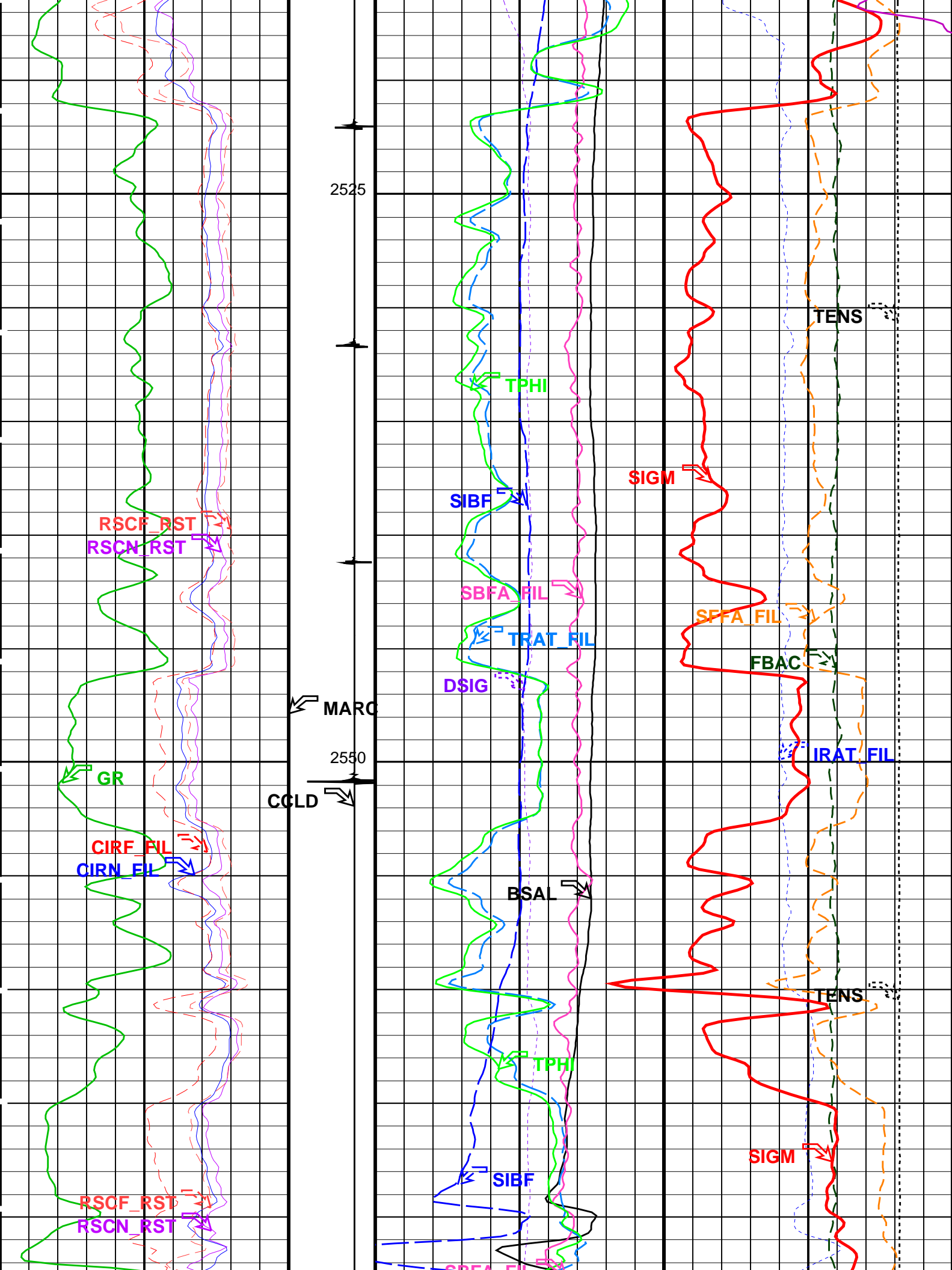


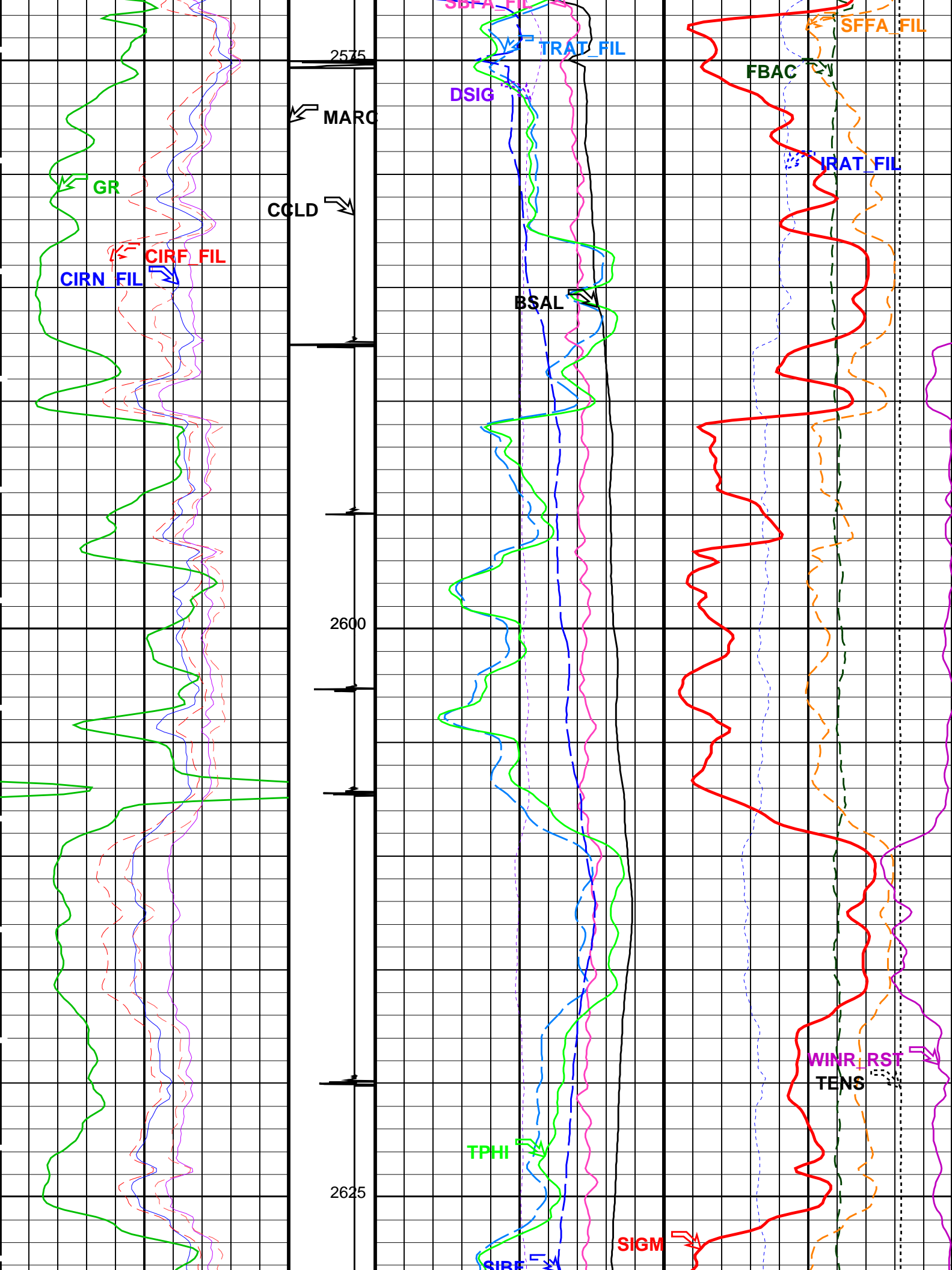


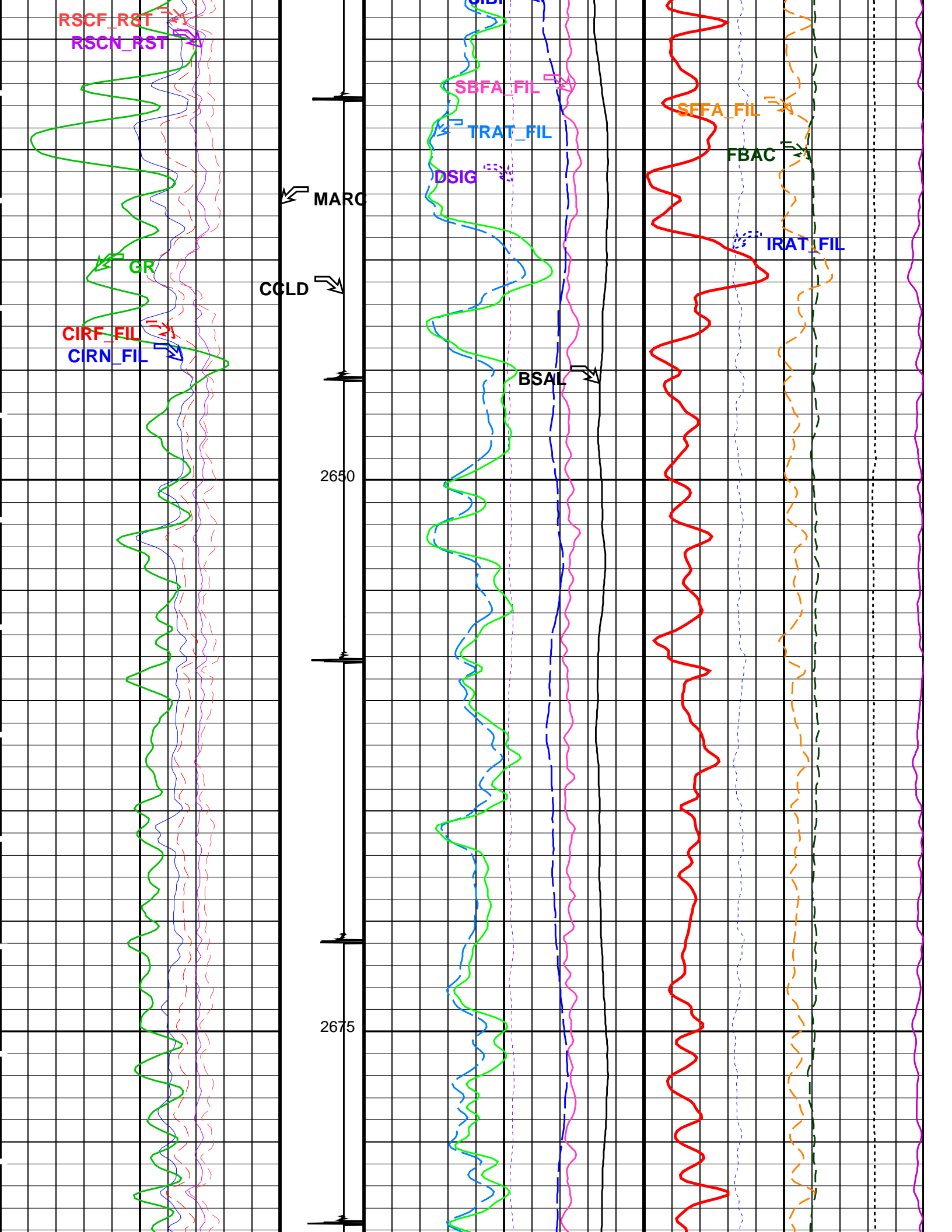


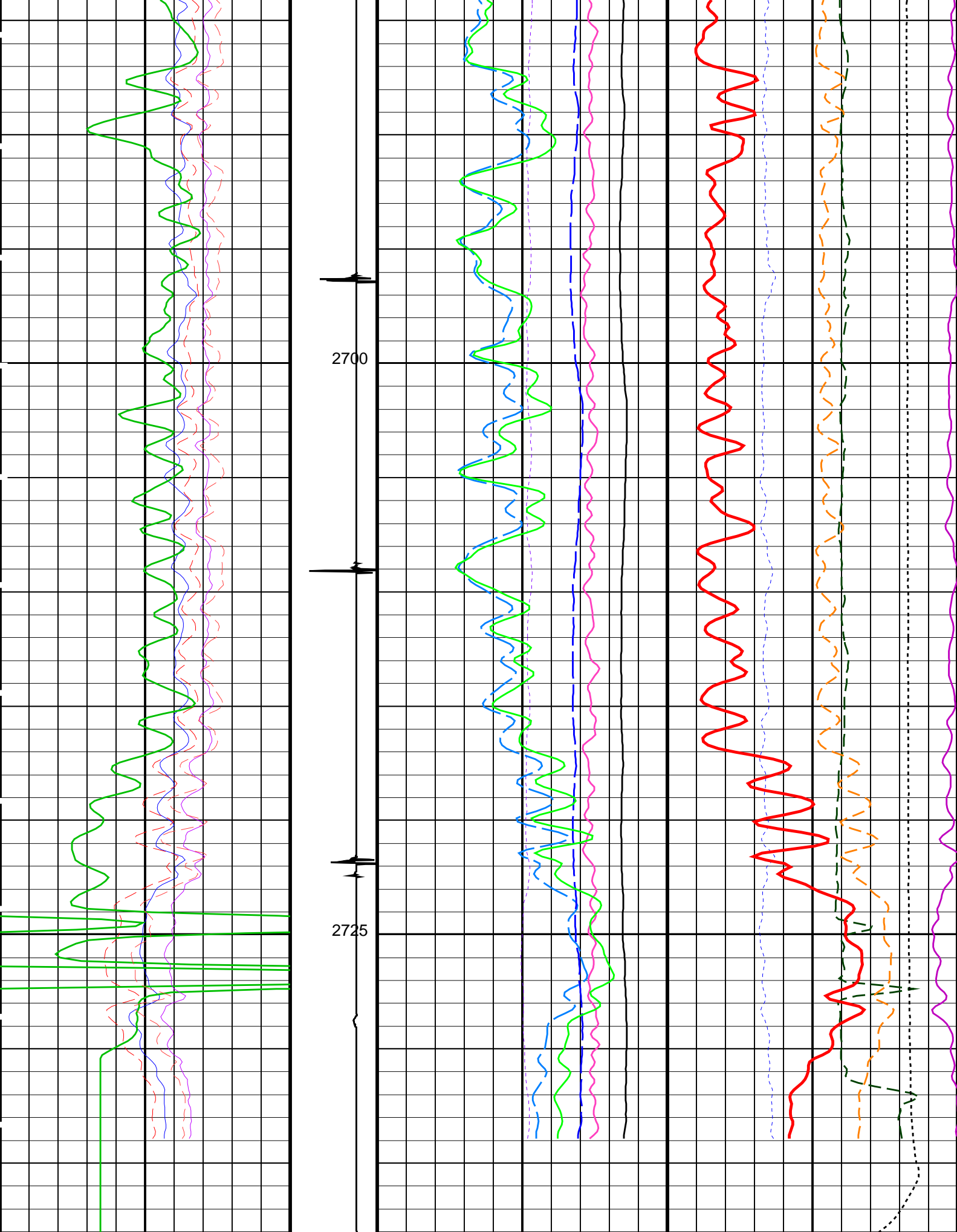












Gamma Ray (GR)

Discriminat  
ed CCL  
(CCL\_D)

RST Borehole Salinity (BSAL)

RST Inelastic Ratio (IRAT\_FIL)

(GAPI)		150	(CCLD)	3	(V)	-1	450	(PPK)	-50	0.75	(-----)		0	
RST Capture to Inelastic Ratio Near (CIRN_FIL)			Minitron Arc Detection (MARC)		RST Sigma Difference (DSIG) (CU)			MCS Far Background (filtered) (FBAC) (CPS)					5000	
2.5		(-----)	0	0		(-----)	5	-30		30		0	0	
RST Capture to Inelastic Ratio Far (CIRF_FIL)					RST Capture Ratio (TRAT_FIL) (-----)			Sigma Formation Far Apparent (SFFA_FIL) (CU)					0	
5		(-----)	0			1.5			0.5		60		0	
RST Near Effective Capture CR (RSCN_RST)					Sigma Borehole Far Apparent (SBFA_FIL) (CU)			Tension (TENS) (LBF)					3000	
45		(-----)	0			150							0	
RST Far Effective Capture CR (RSCF_RST)					RST Sigma Borehole Fluid (SIBF) (CU)									
45		(-----)	0			100			0					
					RST Porosity (TPHI) (V/V)									
						0.6			0					
					RST Weighted Inelastic Ratio (WINR_RST) (-----)								0	
						2								
					RST Sigma (SIGM) (CU)								0	
						60								

### PIP SUMMARY

Time Mark Every 60 S

## Parameters

DLIS Name	Description	Value
RST-C: Reservoir Saturation Pro Tool C		
AIRB	RST Air Borehole	No
BHS	Borehole Status	CASED
BSALOPT	RST Borehole Salinity Option	Unknown
BSFL	RST Borehole Salinity Filter Length	51
DFPC	RST Depth Filter Processing Constant	One
DFPC_TDTL	RST Depth Filter Processing Constant (TDT-like)	Two
MATR	Rock Matrix for Neutron Porosity Corrections	SANDSTONE
NORM_IRAT_RST	RST Normalized Inelastic Ratio	0.48
NORM_SIGM_RST	RST Normalized Sigma	30
RGAI	Near/Far Gain Calibration Ratio	1
TIER_SIGM	RST Sigma Acquisition Mode	0_RST_Sigma
PSPT-B: Production Services Logging Platform		
BHS	Borehole Status	CASED
MATR	Rock Matrix for Neutron Porosity Corrections	SANDSTONE
System and Miscellaneous		
BS	Bit Size	9.875 IN
BSAL	Borehole Salinity	-50000.00 PPM
CSIZ	Current Casing Size	7.000 IN
CWEI	Casing Weight	26.00 LB/F
DO	Depth Offset for Playback	2.0 M
PP	Playback Processing	NORMAL

Format: RST\_SIG\_ANSW    Vertical Scale: 1:200    Graphics File Created: 20-May-2009 11:52

## OP System Version: 16C0-147

MCM

RST-C      SRPC-3777-Q4\_2008\_OP16      PSPT-B      SRPC-3777-Q4\_2008\_OP16

## Input DLIS Files

DEFAULT      RST\_PSP\_043LUP      FN:39    PRODUCER    20-May-2009 09:38    2736.0 M    2287.1 M

## Output DLIS Files

DEFAULT      RST\_PSP\_046PUP      FN:42    PRODUCER    20-May-2009 11:52



GR Background Pass

MAXIS Field Log

Company: Esso Australia Pty Ltd. Well: A1A

Input DLIS Files

DEFAULT RST\_PSP\_043LUP FN:39 PRODUCER 20-May-2009 09:38 2736.0 M 2287.1 M

Output DLIS Files

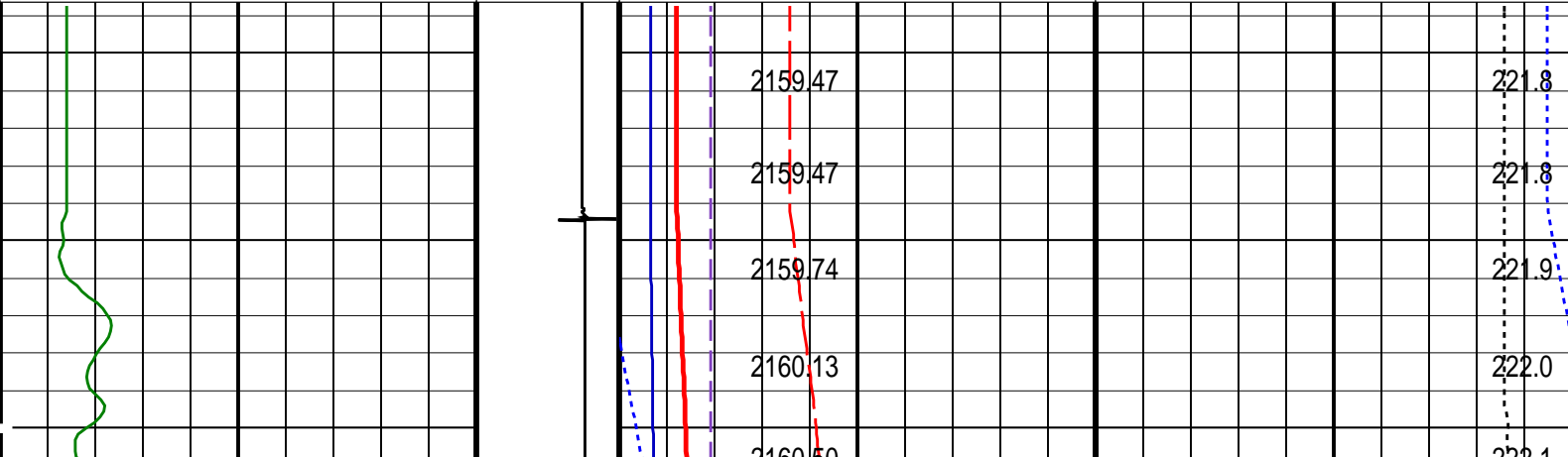
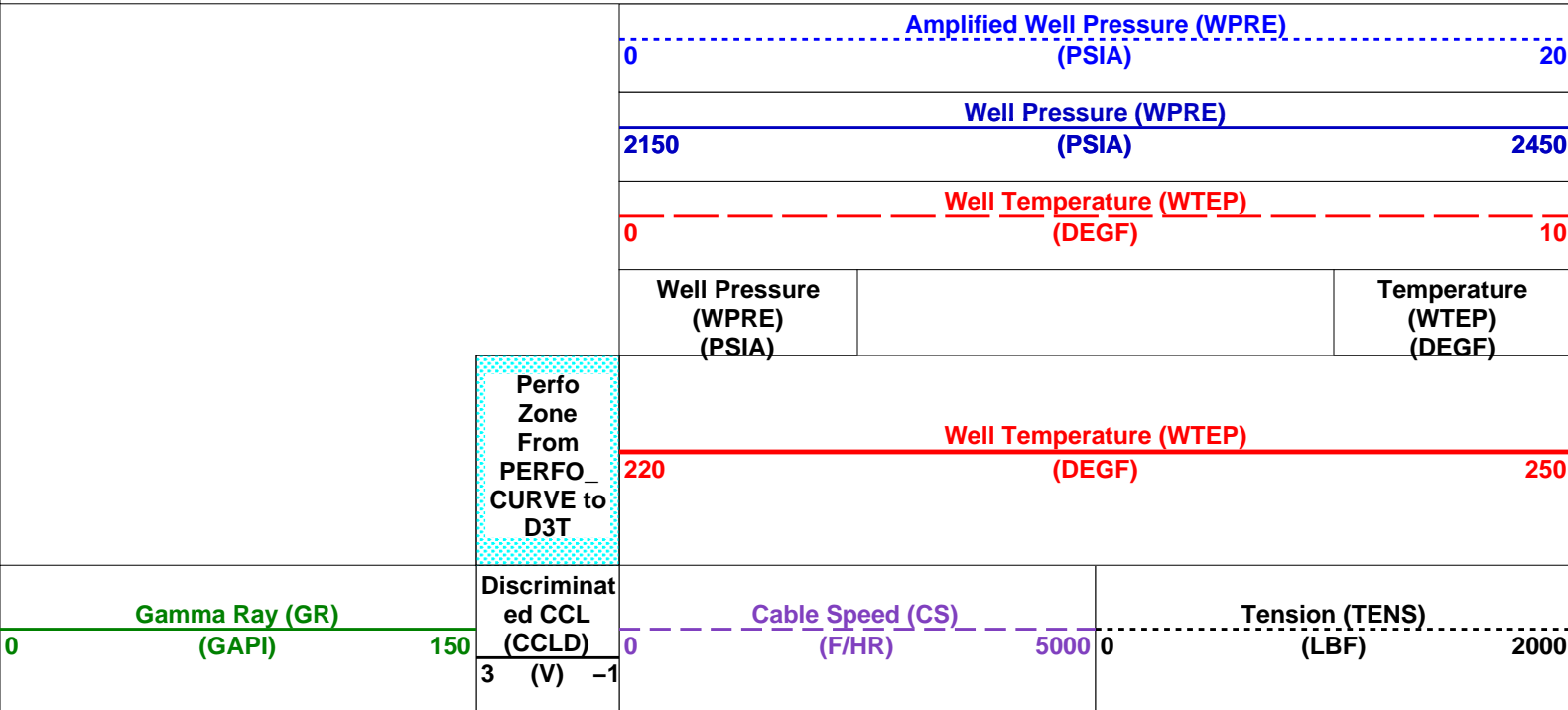
DEFAULT RST\_PSP\_046PUP FN:42 PRODUCER 20-May-2009 11:52 2738.0 M 2283.6 M

OP System Version: 16C0-147  
MCM

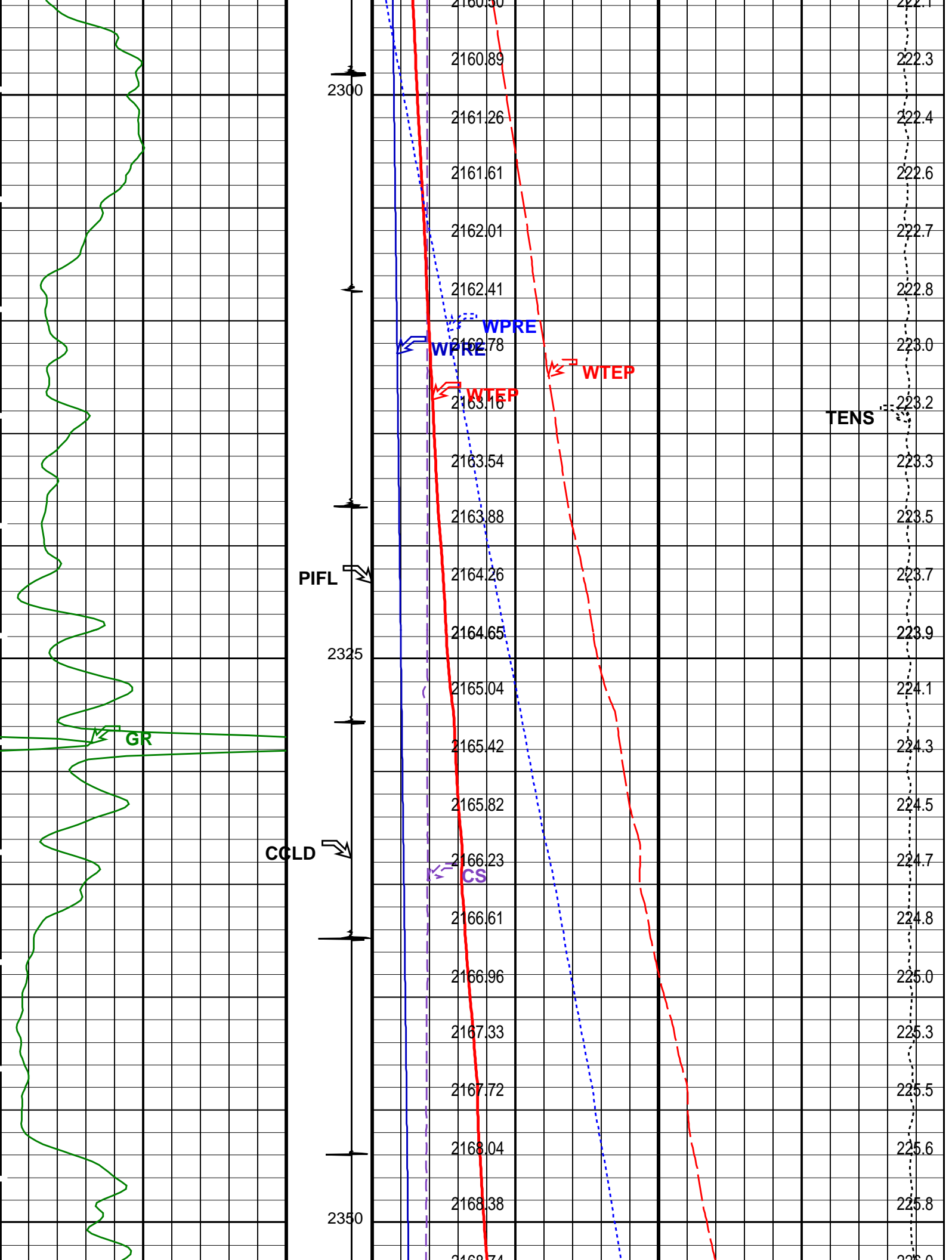
RST-C SRPC-3777-Q4\_2008\_OP16 PSPT-B SRPC-3777-Q4\_2008\_OP16

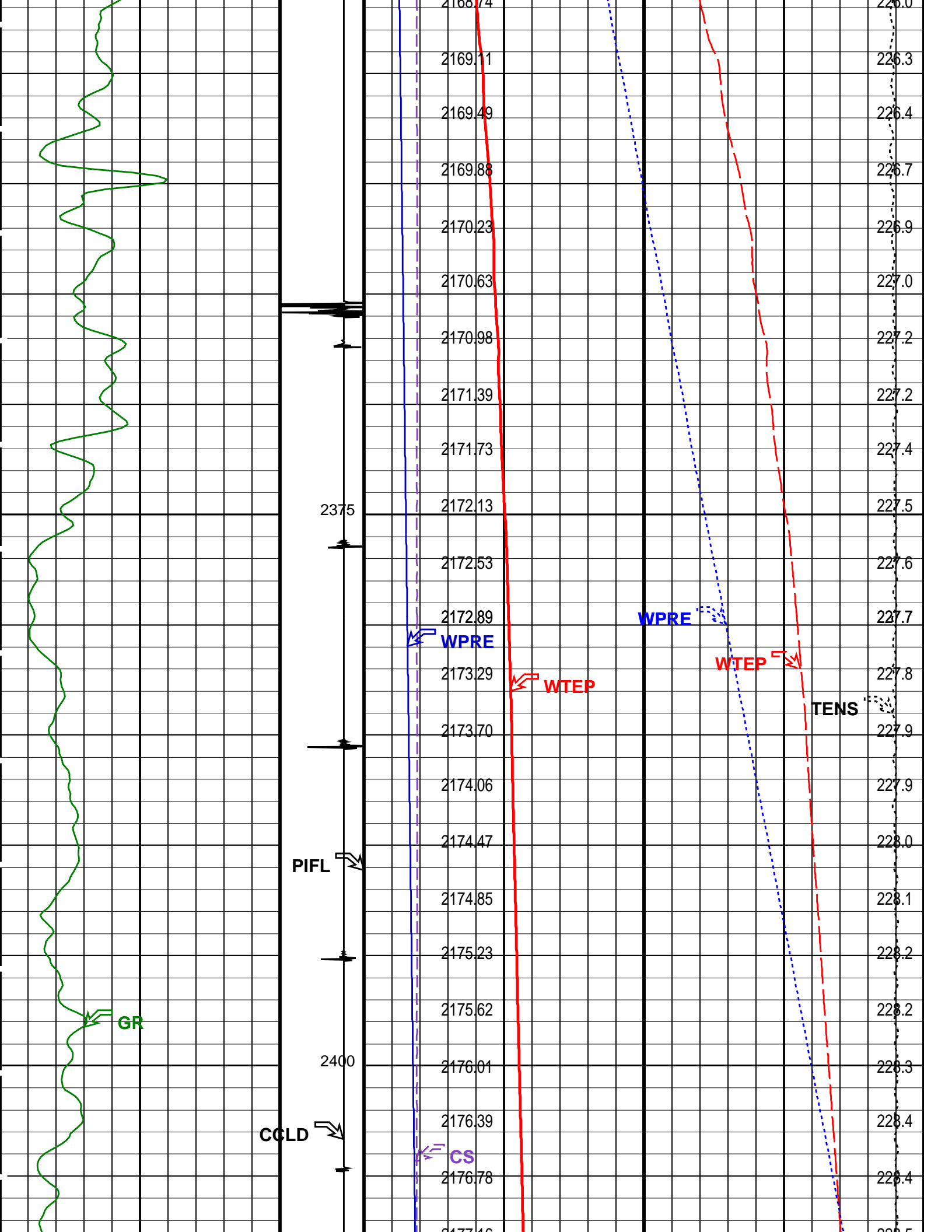
PIP SUMMARY

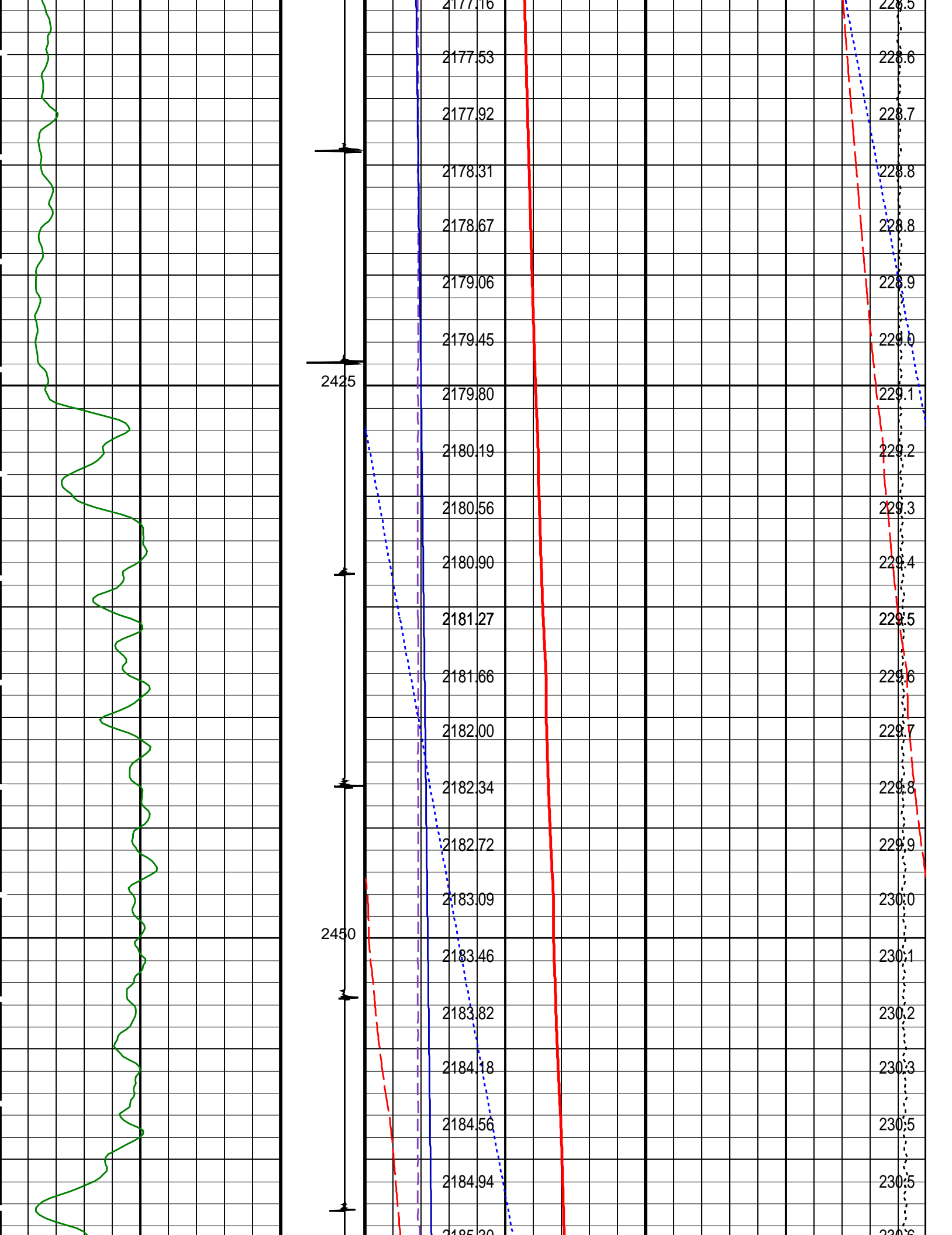
Time Mark Every 60 S

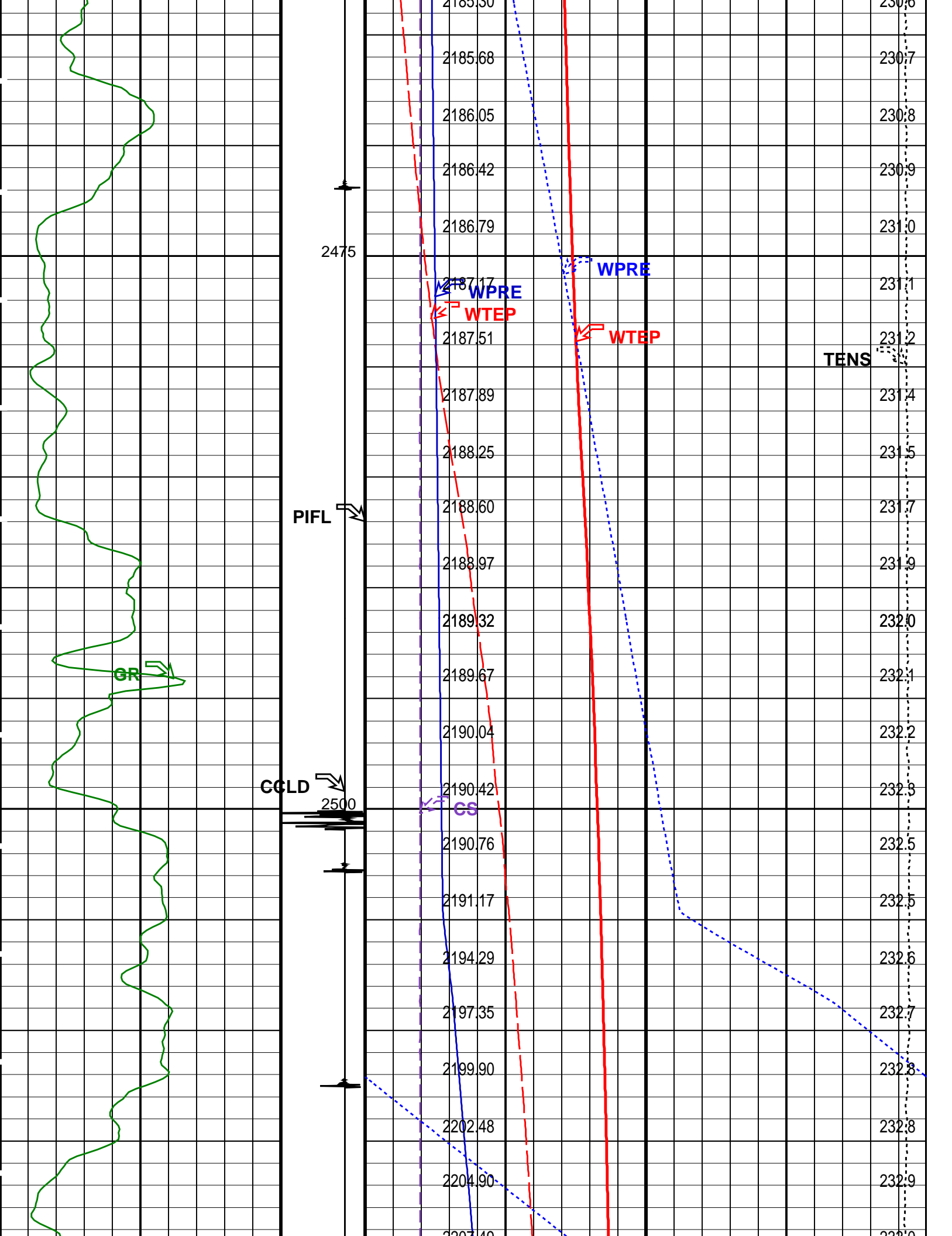


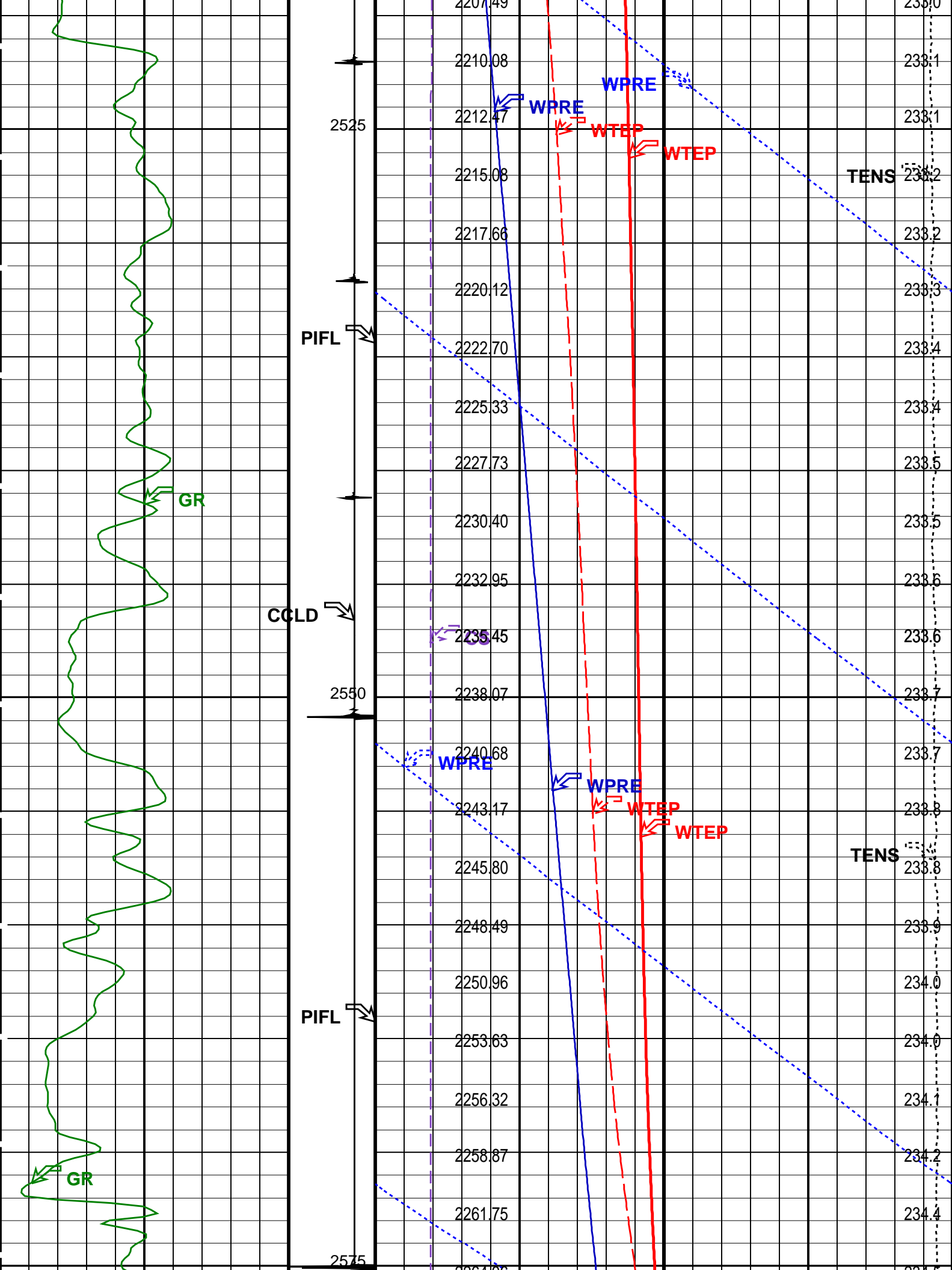


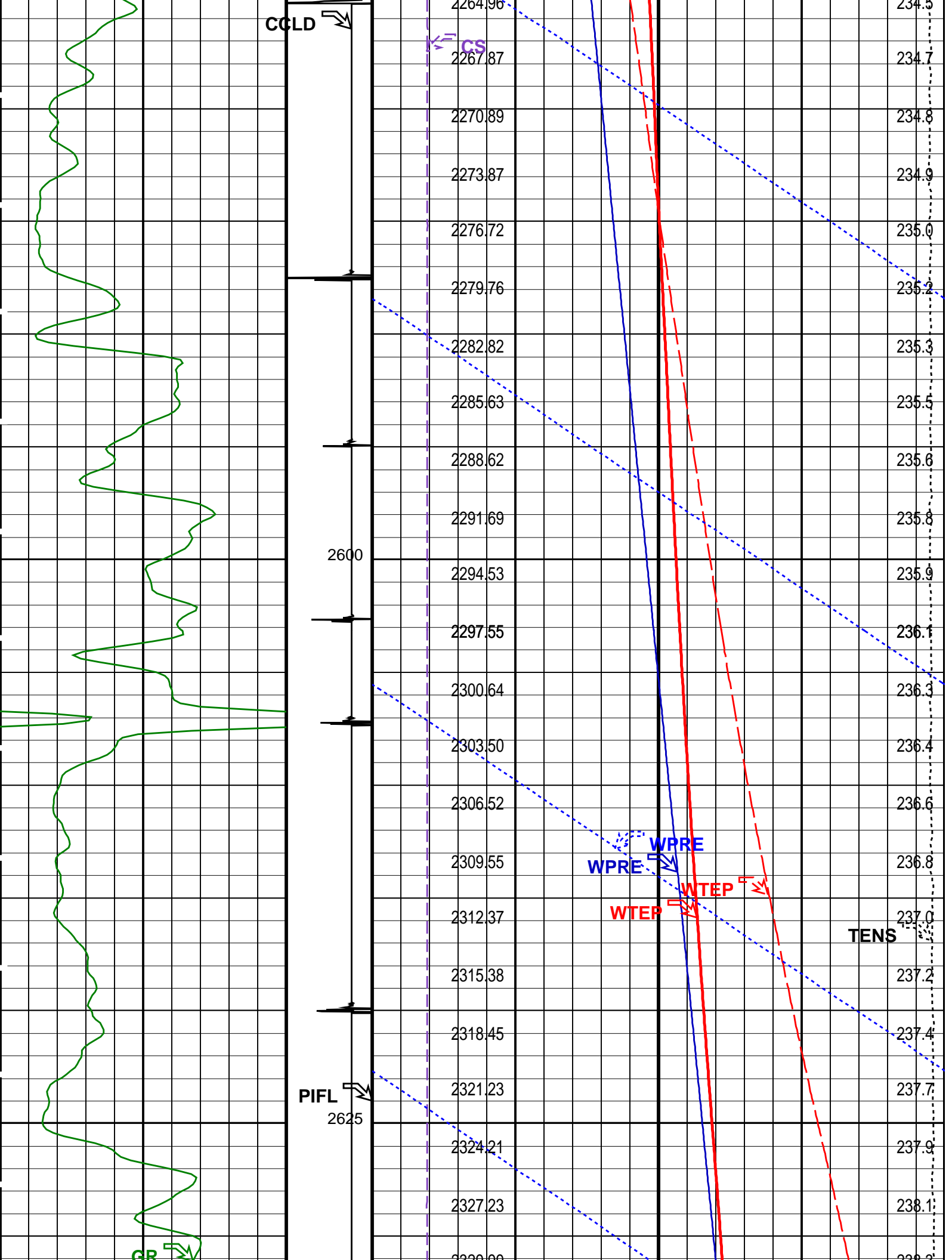


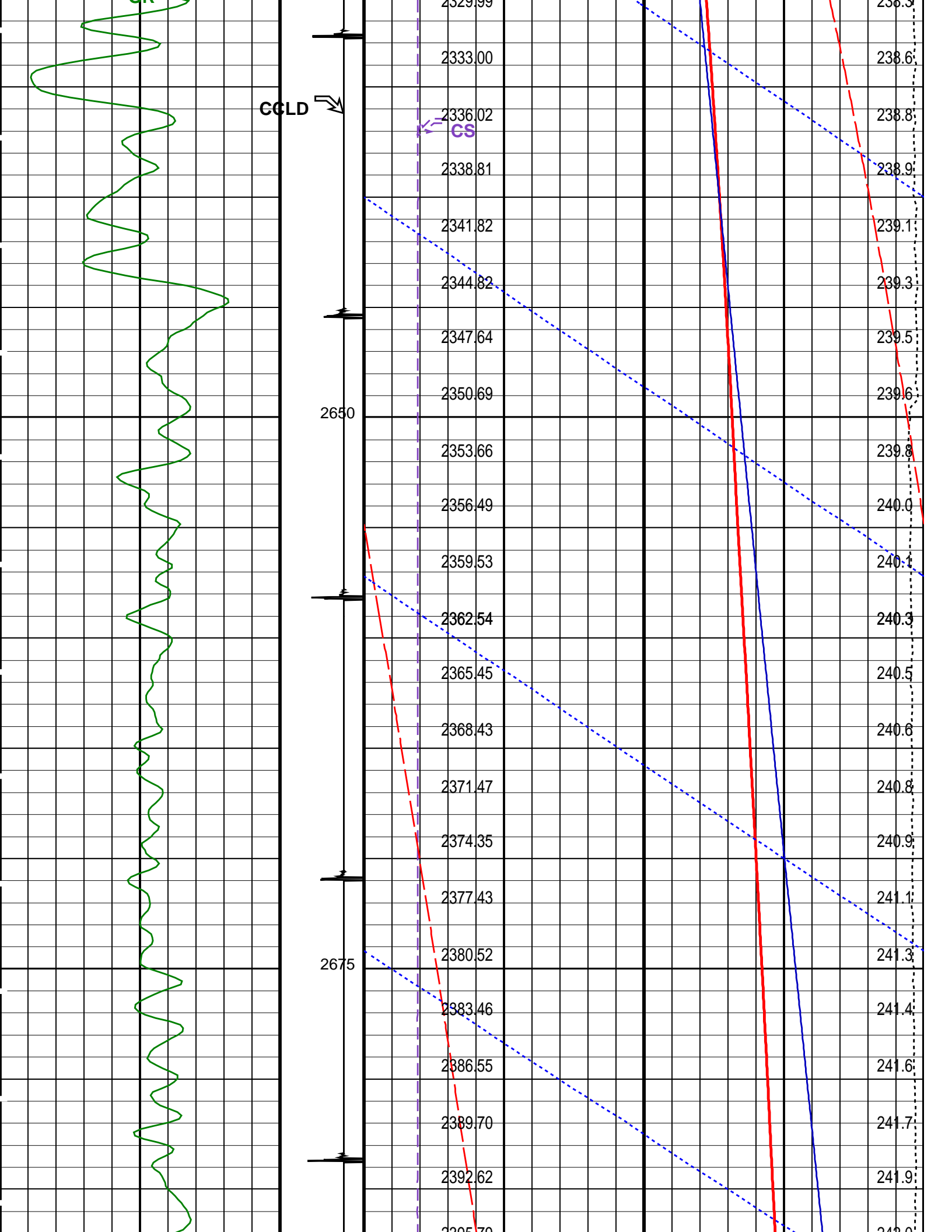


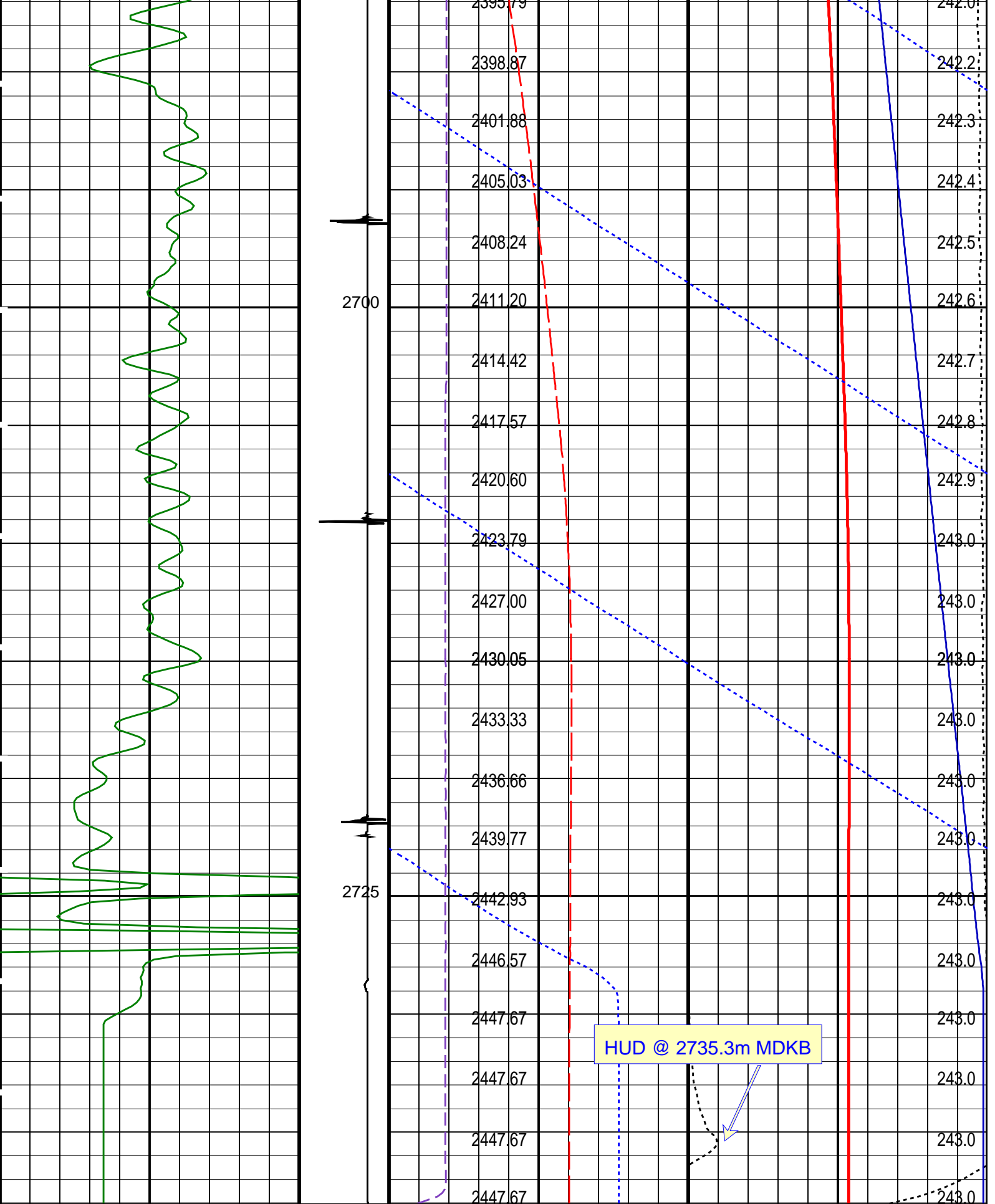












Gamma Ray (GR) (GAPI)		Discriminated CCL (CCLD) (V)	Cable Speed (CS) (F/HR)		Tension (TENS) (LBF)	
0	150	3 (V) -1	0	5000	0	2000
		Perfo				



