

Company: Esso Australia Pty Ltd

Well: CBA F27

Field: Cobia

Rig: Rig 175

Country: Australia

Junk Basket with 6" Gauge Ring  
Max-R Setting Record  
28-May-2009

Rig: Rig 175

Field: Cobia

Location: Bass Strait

Well: CBA F27

Company: Esso Australia Pty Ltd

LOCATION

Bass Strait

Gippsland

Basin

Elev.: K.B. 40.99 m

G.L. -79.00 m

D.F. 40.99 m

Permanent Datum: \_\_\_\_\_

GROUND LEVEL

Elev.: 40.99 m

Log Measured From: \_\_\_\_\_

RT

-40.99 m above Perm. Datum

Drilling Measured From: \_\_\_\_\_

RT

State: Victoria

Max. Well Deviation 59.93 deg

Longitude 148° 18' 33.005"E

Latitude 038° 26' 57.568"S

|                               |                          |      |       |  |
|-------------------------------|--------------------------|------|-------|--|
| Logging Date                  | 28-May-2009              |      |       |  |
| Run Number                    | 1 through 3              |      |       |  |
| Depth Driller                 | 3959 m                   |      |       |  |
| Schlumberger Depth            | 3959 m                   |      |       |  |
| Bottom Log Interval           | 3786.6 m                 |      |       |  |
| Top Log Interval              | 3786.6 m                 |      |       |  |
| Casing Fluid Type             | Sea water                |      |       |  |
| Salinity                      |                          |      |       |  |
| Density                       | 8.55 g/cm3               |      |       |  |
| Fluid Level                   | 0 m                      |      |       |  |
| BIT/CASING/TUBING STRING      |                          |      |       |  |
| Bit Size                      | 8.500 in                 |      |       |  |
| From                          | 589 m                    |      |       |  |
| To                            | 3982 m                   |      |       |  |
| Casing/Tubing Size            | 7.000 in                 |      |       |  |
| Weight                        | 26 lbm/ft                |      |       |  |
| Grade                         | L-80                     |      |       |  |
| From                          | 16.66 m                  |      |       |  |
| To                            | 3989 m                   |      |       |  |
| Maximum Recorded Temperatures | 100 degC                 |      |       |  |
| Logger On Bottom              | 28-May-2009              |      | 10:00 |  |
| Unit Number                   | 3929                     | AUSL |       |  |
| Recorded By                   | M. Pratt, O. Darby       |      |       |  |
| Witnessed By                  | M. Culicut & S. Faulkner |      |       |  |

|                               |  |  |  |           |       |   |
|-------------------------------|--|--|--|-----------|-------|---|
| PVT DATA                      |  |  |  | Run 1     | Run 2 | R |
| Oil Density                   |  |  |  |           |       |   |
| Water Salinity                |  |  |  |           |       |   |
| Gas Gravity                   |  |  |  |           |       |   |
| Bo                            |  |  |  |           |       |   |
| Bw                            |  |  |  |           |       |   |
| 1/Bg                          |  |  |  |           |       |   |
| Bubble Point Pressure         |  |  |  |           |       |   |
| Bubble Point Temperature      |  |  |  |           |       |   |
| Solution GOR                  |  |  |  |           |       |   |
| Maximum Deviation             |  |  |  | 59.93 deg |       |   |
| CEMENTING DATA                |  |  |  |           |       |   |
| Primary/Squeeze               |  |  |  | Primary   |       |   |
| Casing String No              |  |  |  |           |       |   |
| Lead Cement Type              |  |  |  |           |       |   |
| Volume                        |  |  |  |           |       |   |
| Density                       |  |  |  |           |       |   |
| Water Loss                    |  |  |  |           |       |   |
| Additives                     |  |  |  |           |       |   |
| Tail Cement Type              |  |  |  |           |       |   |
| Volume                        |  |  |  |           |       |   |
| Density                       |  |  |  |           |       |   |
| Water Loss                    |  |  |  |           |       |   |
| Additives                     |  |  |  |           |       |   |
| Expected Cement Top           |  |  |  |           |       |   |
| Logging Date                  |  |  |  |           |       |   |
| Run Number                    |  |  |  |           |       |   |
| Depth Driller                 |  |  |  |           |       |   |
| Schlumberger Depth            |  |  |  |           |       |   |
| Bottom Log Interval           |  |  |  |           |       |   |
| Top Log Interval              |  |  |  |           |       |   |
| Casing Fluid Type             |  |  |  |           |       |   |
| Salinity                      |  |  |  |           |       |   |
| Density                       |  |  |  |           |       |   |
| Fluid Level                   |  |  |  |           |       |   |
| BIT/CASING/TUBING STRING      |  |  |  |           |       |   |
| Bit Size                      |  |  |  |           |       |   |
| From                          |  |  |  |           |       |   |
| To                            |  |  |  |           |       |   |
| Casing/Tubing Size            |  |  |  |           |       |   |
| Weight                        |  |  |  |           |       |   |
| Grade                         |  |  |  |           |       |   |
| From                          |  |  |  |           |       |   |
| To                            |  |  |  |           |       |   |
| Maximum Recorded Temperatures |  |  |  |           |       |   |
| Logger On Bottom              |  |  |  |           |       |   |
| Unit Number                   |  |  |  |           |       |   |
| Recorded By                   |  |  |  |           |       |   |
| Witnessed By                  |  |  |  |           |       |   |

Date Created: 26-MAY-2009 15:59:45

### Logging Cable

|                    |                |
|--------------------|----------------|
| Type:              | 7-46V XS       |
| Serial Number:     | 708145         |
| Length:            | 7315 M         |
| Conveyance Method: | Wireline       |
| Rig Type:          | Offshore Fixed |

|                             |                       |
|-----------------------------|-----------------------|
| Log Sequence:               | First Log In the Well |
| Rig Up Length At Surface:   | 0.00 M                |
| Rig Up Length At Bottom:    | 0.00 M                |
| Rig Up Length Correction:   | 0.00 M                |
| Stretch Correction:         |                       |
| Tool Zero Check At Surface: | 0.00 M                |

1. IDW used as primary depth control.
2. Z-chart used as backup
3. First log in well, Schlumberger depth control procedures applied.
4. All logs zeroed at drill floor.
- 5.
- 6.

THE USE OF AND RELIANCE UPON THIS RECORDED-DATA BY THE HEREIN NAMED COMPANY (AND ANY OF ITS AFFILIATES, PARTNERS, REPRESENTATIVES, AGENTS, CONSULTANTS AND EMPLOYEES) IS SUBJECT TO THE TERMS AND CONDITIONS AGREED UPON BETWEEN SCHLUMBERGER AND THE COMPANY, INCLUDING: (a) RESTRICTIONS ON USE OF THE RECORDED-DATA; (b) DISCLAIMERS AND WAIVERS OF WARRANTIES AND REPRESENTATIONS REGARDING COMPANY'S USE OF AND RELIANCE UPON THE RECORDED-DATA; AND (c) CUSTOMER'S FULL AND SOLE RESPONSIBILITY FOR ANY INFERENCE DRAWN OR DECISION MADE IN CONNECTION WITH THE USE OF THIS RECORDED-DATA.

OTHER SERVICES2  
OS1:  
OS2:  
OS3:  
OS4:  
OS5:

REMARKS: RUN NUMBER 2

Objective:  
RIH with Junk Basket and 6" gauge ring to HUD, ensure access for Max-R.

HUD tagged @ 3933.6m MDKB with Junk Basket.

CCL to Bottom of Junk Basket = 2.51m

Secure Initiated

CCL to Top Shot: 13.3m

CCL Stop Depth: 3783.7m MDKB







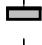



Schlumberger Crew:

Days: G. Martin, K. Kerr

Nights: A. Hall, G. Blandford, Max-R Specialist: Mark Wilson

|   |       |      |   |       |      |
|---|-------|------|---|-------|------|
| RUN 1<br>SERVICE ORDER #: 4500564406<br>PROGRAM VERSION: 17C0-154<br>FLUID LEVEL: 0 m |       |      | RUN 2<br>SERVICE ORDER #:<br>PROGRAM VERSION:<br>FLUID LEVEL: |       |      |
| LOGGED INTERVAL   | START | STOP | LOGGED INTERVAL   | START | STOP |
|   |       |      |   |       |      |
|   |       |      |   |       |      |
|   |       |      |   |       |      |
|   |       |      |   |       |      |

EQUIPMENT DESCRIPTION

| RUN 1                        |   |                   |                                   | RUN 2                              |   |                   |                   |
|------------------------------|---|-------------------|-----------------------------------|------------------------------------|---|-------------------|-------------------|
| SURFACE EQUIPMENT            |   | SURFACE EQUIPMENT |                                   | SURFACE EQUIPMENT                  |   | SURFACE EQUIPMENT |                   |
| WITM (SHM)                   |   | WITM (SHM)        |                                   | WITM (SHM)                         |   | WITM (SHM)        |                   |
| DOWNHOLE EQUIPMENT           |   |                   |                                   | DOWNHOLE EQUIPMENT                 |   |                   |                   |
| PEH-A<br>PEH-A 11            |  | 4.46              |                                   | PEH-A<br>PEH-A 11                  |  | 20.54             |                   |
| AH-64<br>AH-64 8001          |  | 3.92              |                                   | AH-64                              |  | 19.99             |                   |
| PGGT-D<br>PGGC 6<br>PGGH-D 6 |  | 3.51              | Gamma Ray<br>Casing Co<br>Tension | PGGT-D<br>PGGC 6<br>PGGH-D 6       |  | 19.59             | 1.07<br>TOOL ZERO |
|                              |   |                   |                                   | AH-283<br>AH-CPST-AA<br>AH-CPST-AA |  | 17.81             |                   |
|                              |   |                   |                                   | AH-CPST-AA                         |  | 17.65             |                   |
|                              |   |                   |                                   | AH-Max-R<br>AH-Max-R               |  | 15.85             |                   |
|                              |   |                   |                                   | AH-4.5" HSD Gun<br>AH-4.5" HSD Gun |  | 10.11             |                   |



[illegible]

## Job Events Summary

MAXIS Field Log

# Schlumberger Job Event Summary

|  | Time              | Elapsed Time | Depth (M)       | File         |
|--|-------------------|--------------|-----------------|--------------|
| Simulated Log<br>Hot checking secondary toolstring | 28-May-2009 1:38  | 000:06       |                 | PERFO_016LUP |
| Simulated Log<br>Hot checking primary toolstring   | 28-May-2009 2:01  | 000:04       |                 | PERFO_018LUP |
| Log Pass (down)<br>RIH with JB                     | 28-May-2009 11:25 | 000:29       | 1413.8 - 3840.6 | PERFO_025LDP |
| Log Pass (up)<br>Correlation pass JB               | 28-May-2009 12:08 | 000:10       | 3932.1 - 3829.1 | PERFO_030LUP |
| Log Pass (up)<br>POOH JB                           | 28-May-2009 12:21 | 000:05       | 3755.6 - 3529.4 | PERFO_031LUP |
| Simulated Log<br>Hot checked toolstring            | 29-May-2009 9:24  | 000:15       |                 | PERFO_043LUP |
| Log Pass (down)<br>RIH with MaxR                   | 29-May-2009 10:43 | 001:08       | 522.3 - 3835.3  | PERFO_044LDP |

|                       |                   |        |                 |              |
|-----------------------|-------------------|--------|-----------------|--------------|
| Log Pass (up)         | 29-May-2009 12:10 | 000:09 | 3835.3 - 3756.7 | PERFO_048LUP |
| Correlation pass MaxR |                   |        |                 |              |
| Log Pass (up)         | 29-May-2009 12:22 | 000:14 | 3835.5 - 3736.7 | PERFO_049LUP |
| Setting pass MaxR     |                   |        |                 |              |
| Log Pass (up)         | 29-May-2009 12:55 | 000:00 | 2353.2 - 2341.2 | PERFO_050LUP |
| POOH with MaxR        |                   |        |                 |              |



Max-R  
Setting pass

MAXIS Field Log

PERFO2 Operational Summary Listing

| Device | Status | Req Depth ( M) | Obs Depth ( M) | Time Used               |
|--------|--------|----------------|----------------|-------------------------|
| GUN1   | Used   | 3797.0         | 3797.0         | Fri May 29 12:29:37 200 |

Company: Esso Australia Pty LtdWell: CBA F27

Output DLIS Files

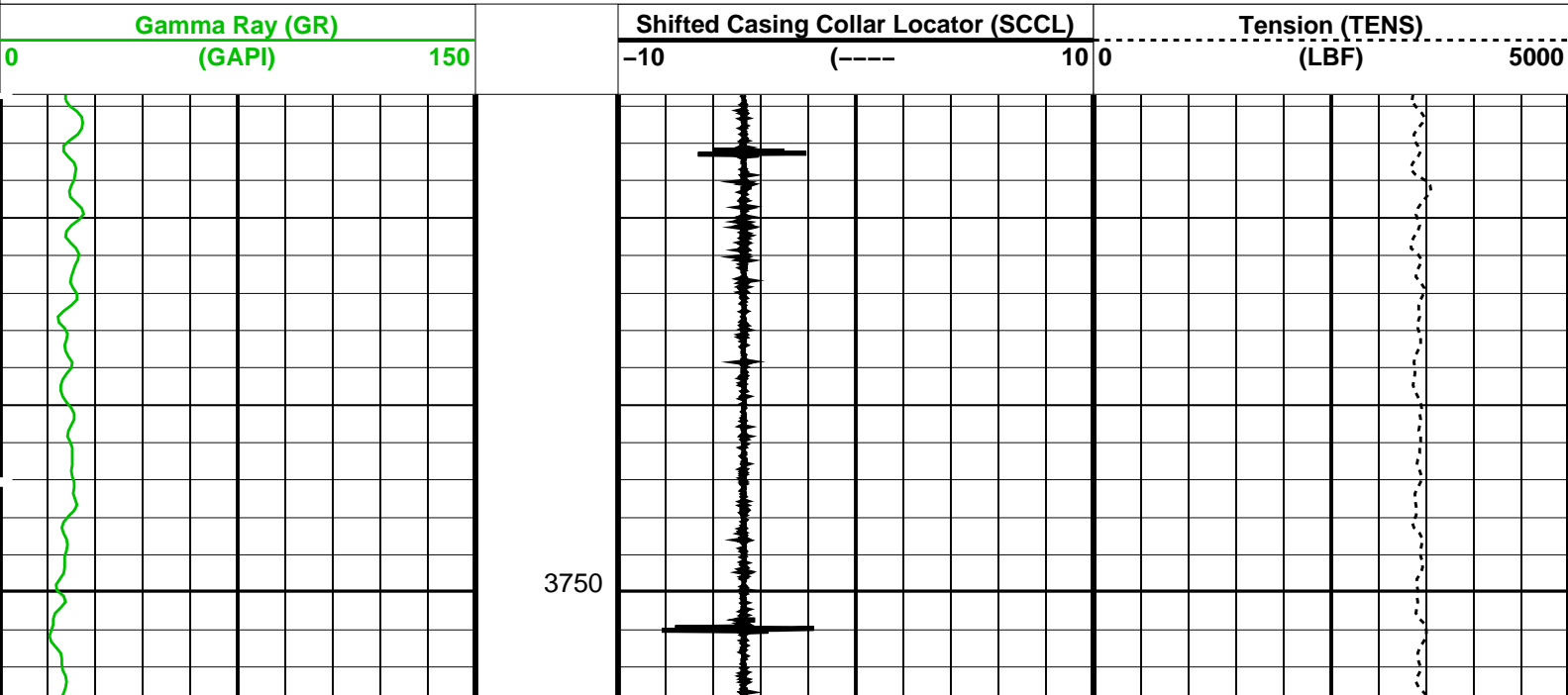
DEFAULTPERFO\_049LUPFN:48PRODUCER29-May-2009 12:22

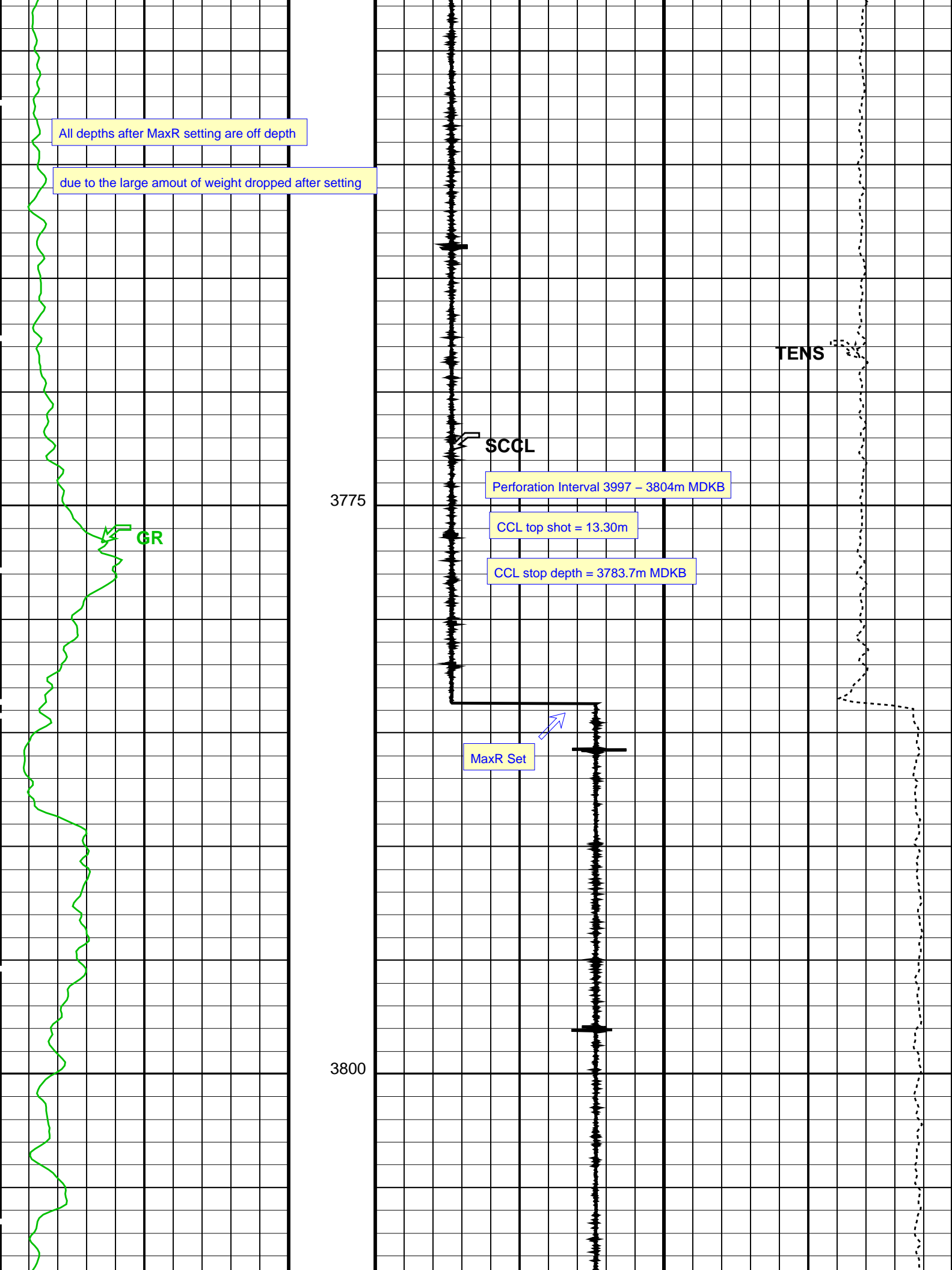
OP System Version: 17C0-154

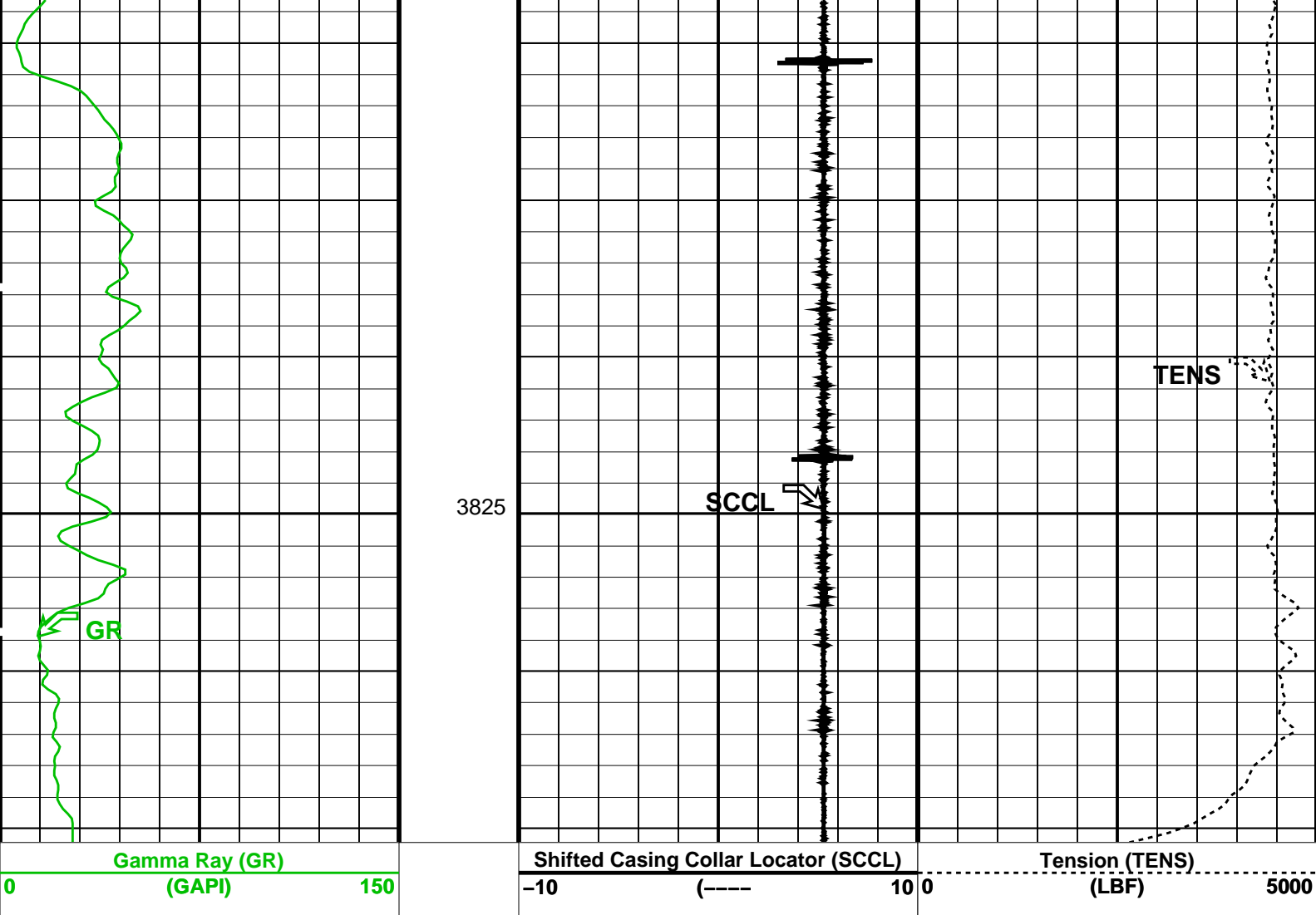
SHM\_GUN17C0-154PGGT-D17C0-154

PIP SUMMARY

Time Mark Every 60 S







PIP SUMMARY

Time Mark Every 60 S

Format: PERFO Vertical Scale: 1:200

Graphics File Created: 29-May-2009 12:22

OP System Version: 17C0-154

SHM\_GUN

17C0-154

PGGT-D

17C0-154

Output DLIS Files

DEFAULT

PERFO\_049LUP

FN:48

PRODUCER

29-May-2009 12:22

Schlumberger

Max-R  
Correlation pass

MAXIS Field Log

Company: Esso Australia Pty Ltd

Well: CBA F27

Output DLIS Files

DEFAULT

PERFO\_048LUP

FN:47

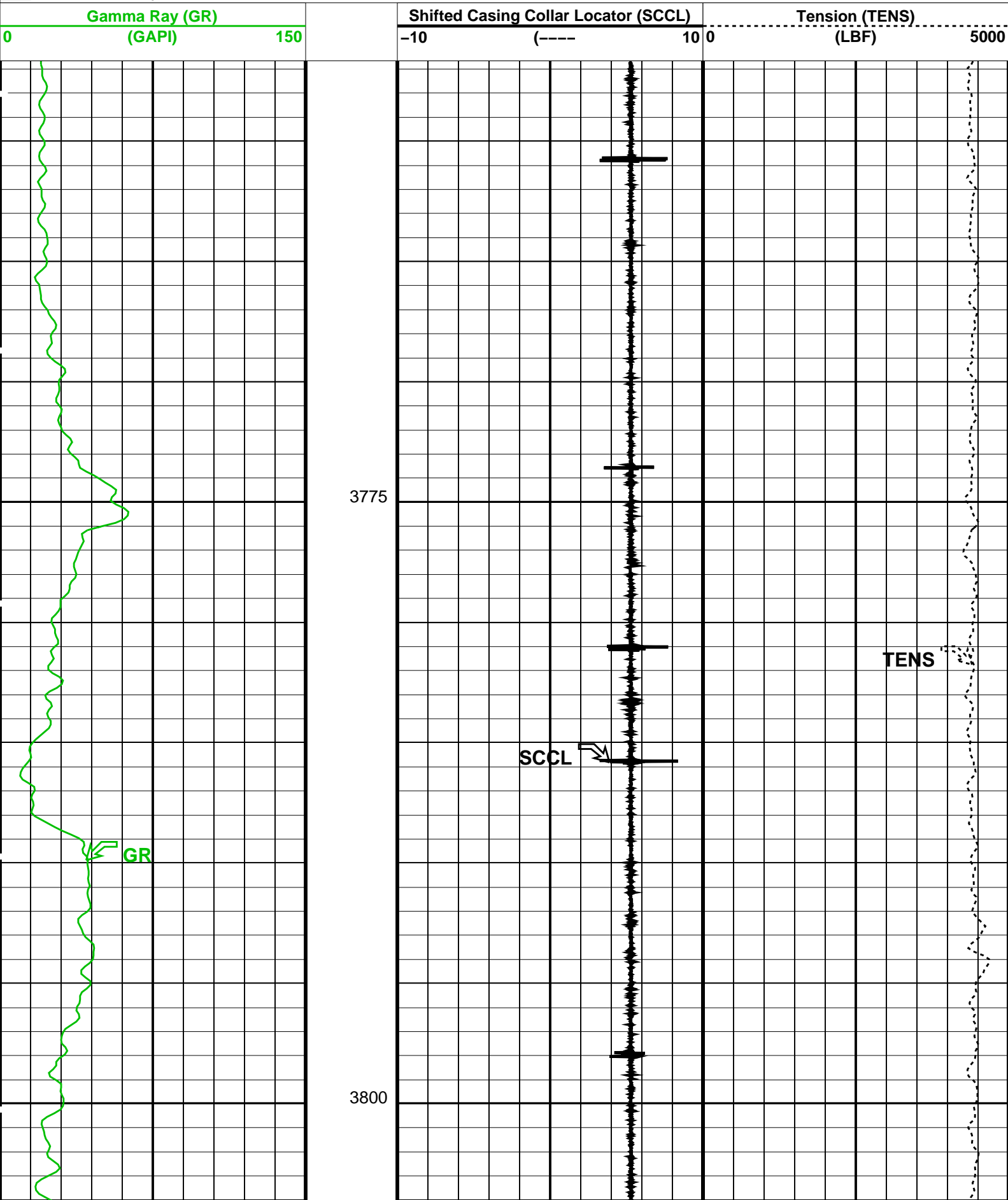
PRODUCER

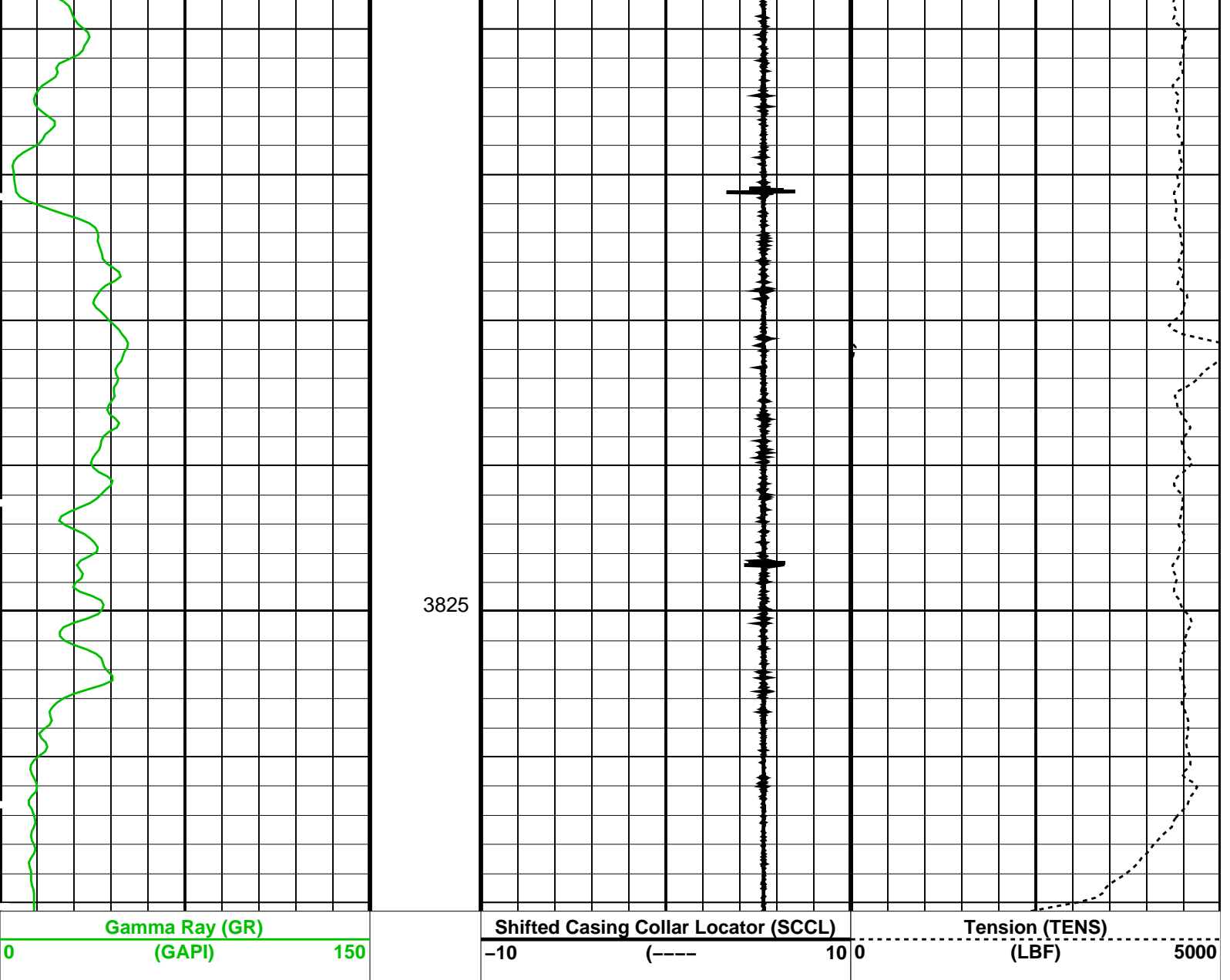
29-May-2009 12:10



PIP SUMMARY

Time Mark Every 60 S





PIP SUMMARY

Time Mark Every 60 S

Format: PERFO Vertical Scale: 1:200

Graphics File Created: 29-May-2009 12:10

OP System Version: 17C0-154

SHM\_GUN

17C0-154

PGGT-D

17C0-154

Output DLIS Files

DEFAULT

PERFO\_048LUP

FN:47

PRODUCER

29-May-2009 12:10

**Schlumberger**

**Junk basket with 6" Gauge Ring  
Correlation pass**

### Input DLIS Files

DEFAULT      PERFO\_030LUP      FN:29    PRODUCER    28-May-2009 12:08    3932.1 M      3829.1 M

### Output DLIS Files

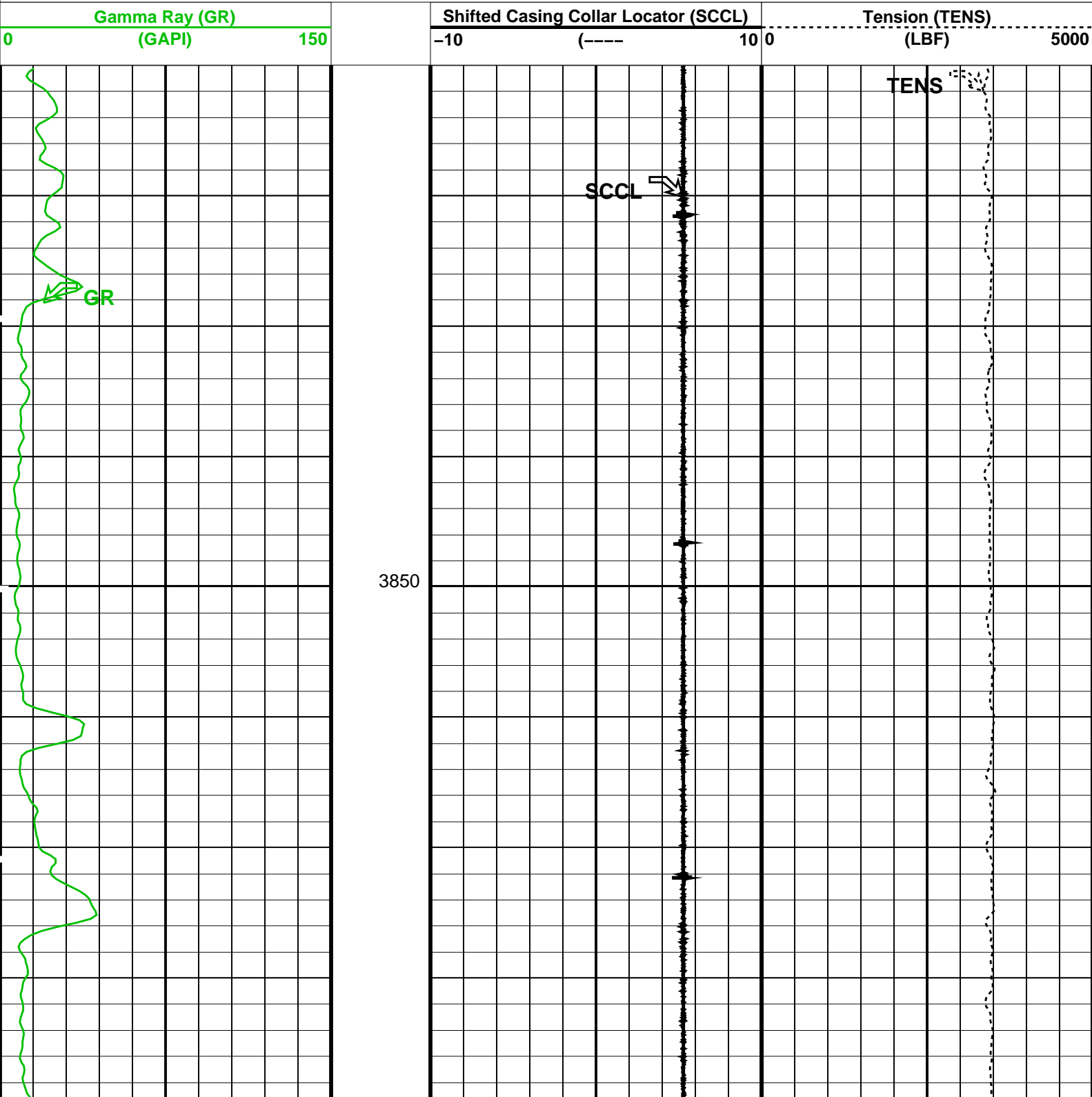
DEFAULT      PERFO\_Cobia\_F27\_033PUP      FN:32    PRODUCER    28-May-2009 12:27    3933.0 M      3830.0 M

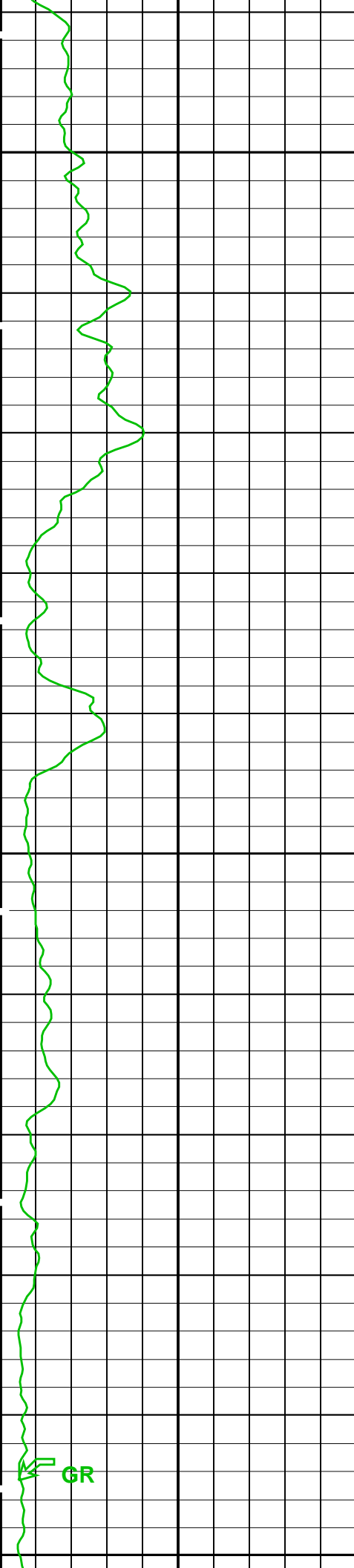
### OP System Version: 17C0-154

SHM\_GUN      17C0-154      PGGT-D      17C0-154

#### PIP SUMMARY

 Time Mark Every 60 S





3875

3900

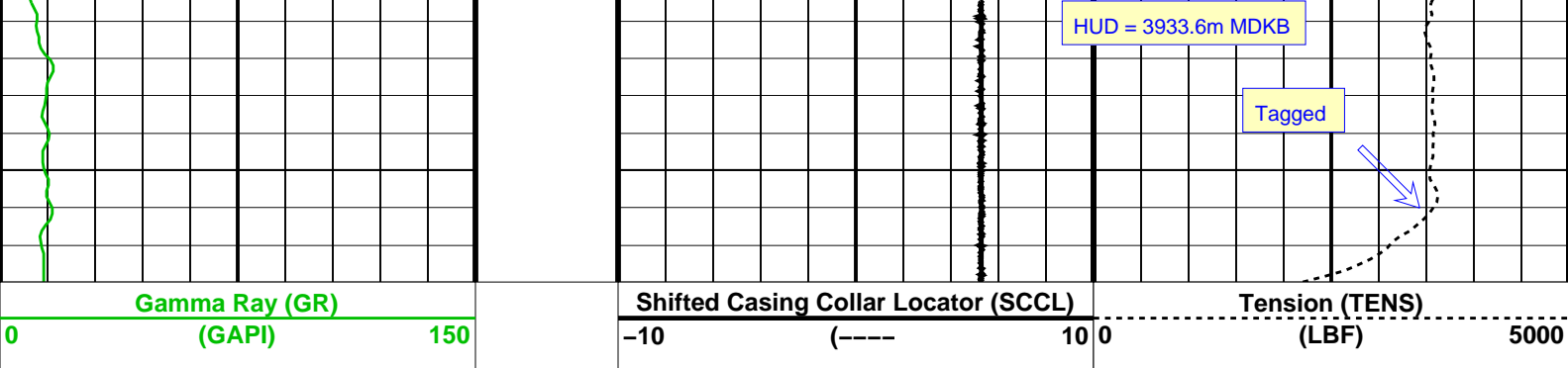
3925

SCCL

TENS

CCL to JB bottom = 2.5m

$3931.1 + 2.5 = 3933.6\text{m}$



PIP SUMMARY

Time Mark Every 60 S

| Parameters                          |                           |  |
|-------------------------------------|---------------------------|--|
| DLIS Name                           | Description               | Value                                    |
| DO                                  | System and Miscellaneous  |  |
| PP                                  | Depth Offset for Playback | 0.9 M                                    |
|                                     | Playback Processing       | NORMAL                                   |
| Format: PERFO Vertical Scale: 1:200 |                           | Graphics File Created: 28-May-2009 12:27 |

| OP System Version: 17C0-154 |          |        |          |
|-----------------------------|----------|--------|----------|
| SHM_GUN                     | 17C0-154 | PGGT-D | 17C0-154 |

| Input DLIS Files  |                        |       |          |                   |                   |
|-------------------|------------------------|-------|----------|-------------------|-------------------|
| DEFAULT           | PERFO_030LUP           | FN:29 | PRODUCER | 28-May-2009 12:08 | 3932.1 M 3829.1 M |
| Output DLIS Files |                        |       |          |                   |                   |
| DEFAULT           | PERFO_Cobia_F27_033PUP | FN:32 | PRODUCER | 28-May-2009 12:27 |                   |

|                                |                        |              |
|--------------------------------|------------------------|--------------|
| Company:                       | Esso Australia Pty Ltd | Schlumberger |
| Well:                          | CBA F27                |              |
| Field:                         | Cobia                  |              |
| Rig:                           | Rig 175                |              |
| Country:                       | Australia              |              |
| Junk Basket with 6" Gauge Ring |                        |              |
| Max-R Setting Record           |                        |              |
| 28-May-2009                    |                        |              |