

Company: Esso Australia Pty Ltd.

Well: A2A

Field: Marlin

Rig: Crane / Prod 4

Country: Australia

RST-C Sigma Survey

Crane / Prod 4	
Field:	Marlin
Location:	Gippsland
Well:	A2A
Company:	Esso Australia Pty Ltd.
LOCATION	
Gippsland	Elev.: K.B. 27.40 m
Basin	G.L. -59.00 m
Bass Strait	D.F. 27.40 m
Permanent Datum:	M.S.L.
Log Measured From:	K.B.
Drilling Measured From:	K.B.
State: Victoria	Max. Well Deviation 37.4 deg
	Longitude 148 13'09.18"E
	Latitude 038 13'55.49"S

Logging Date	22-Jun-2009		
Run Number	1		
Depth Driller	1658.1 m		
Schlumberger Depth	1585 m		
Bottom Log Interval	1585 m		
Top Log Interval	1480 m		
Casing Fluid Type	Production fluids		
Salinity			
Density			
Fluid Level	0 m		
BIT/CASING/TUBING STRING			
Bit Size	12.250 in		
From	411.69 m		
To	1658.4 m		
Casing/Tubing Size	9.625 in		
Weight	47 lbn/ft		
Grade	J-55		
From	12.5 m		
To	1415.32 m		
Maximum Recorded Temperatures	169 degF		
Logger On Bottom	23-Jun-2009	0:30	
Unit Number	889	AUSL	
Recorded By	B.Donahoe		
Witnessed By	J.Digiovanni / G. Rimmer		

PVT DATA				Run 1	Run 2	Run 3
Oil Density						
Water Salinity						
Gas Gravity						
Bo						
Bw						
1/Bg						
Bubble Point Pressure						
Bubble Point Temperature						
Solution GOR						
Maximum Deviation	37.4 deg					
CEMENTING DATA						
Primary/Squeeze	Primary					
Casing String No						
Lead Cement Type						
Volume						
Density						
Water Loss						
Additives						
Tail Cement Type						
Volume						
Density						
Water Loss						
Additives						
Expected Cement Top						
Logging Date						
Run Number						
Depth Driller						
Schlumberger Depth						
Bottom Log Interval						
Top Log Interval						
Casing Fluid Type						
Salinity						
Density						
Fluid Level						
BIT/CASING/TUBING STRING						
Bit Size						
From						
To						
Casing/Tubing Size						
Weight						
Grade						
From						
To						
Maximum Recorded Temperatures						
Logger On Bottom						
Unit Number						
Recorded By						
Witnessed By						

## DEPTH SUMMARY LISTING

Date Created: 23-JUN-2009 1:32:26

## Depth System Equipment

Depth Measuring Device		Tension Device		Logging Cable	
Type:	IDW-EB	Type:	PSDS/OSDS	Type:	2-32ZT
Serial Number:	6373	Serial Number:	325357	Serial Number:	207308
Calibration Date:	2-Dec-2008	Calibration Date:	5-May-2009	Length:	6180 M
Calibrator Serial Number:	30	Calibrator Serial Number:	1174		
Calibration Cable Type:	2-23ZT	Number of Calibration Points:	0	Conveyance Method:	Wireline
Wheel Correction 1:	-1			Rig Type:	Offshore Fixed
Wheel Correction 2:	-2				

Depth Control Parameters	
--------------------------	--

Log Sequence:	Subsequent Log In the Well
Reference Log Name:	MARLIN A2 Petrophysical Analysis log
Reference Log Run Number:	
Reference Log Date:	23-Oct-07

Depth Control Remarks	
-----------------------	--

1. IDW used as primary depth control.
2. Z-chart used as secondary backup
3. Log Correlated on depth over Zone of interest
4. CMTD Calibration:  $A=8.95E-6$ ,  $B=0.8647$ ,  $C=-82.7$
- 5.
- 6.

**DISCLAIMER**

THE USE OF AND RELIANCE UPON THIS RECORDED-DATA BY THE HEREIN NAMED COMPANY (AND ANY OF ITS AFFILIATES, PARTNERS, REPRESENTATIVES, AGENTS, CONSULTANTS AND EMPLOYEES) IS SUBJECT TO THE TERMS AND CONDITIONS AGREED UPON BETWEEN SCHLUMBERGER AND THE COMPANY, INCLUDING: (a) RESTRICTIONS ON USE OF THE RECORDED-DATA; (b) DISCLAIMERS AND WAIVERS OF WARRANTIES AND REPRESENTATIONS REGARDING COMPANY'S USE OF AND RELIANCE UPON THE RECORDED-DATA; AND (c) CUSTOMER'S FULL AND SOLE RESPONSIBILITY FOR ANY INFERENCE DRAWN OR DECISION MADE IN CONNECTION WITH THE USE OF THIS RECORDED-DATA.

OTHER SERVICES1	OTHER SERVICES2
OS1:   None	OS1:
OS2:	OS2:
OS3:	OS3:
OS4:	OS4:
OS5:	OS5:

OS1:	None	OS1:
OS2:		OS2:
OS3:		OS3:
OS4:		OS4:
OS5:		OS5:

OS2:	OS2:
OS3:	OS3:
OS4:	OS4:
OS5:	OS5:

OS3:	OS3:
OS4:	OS4:
OS5:	OS5:

OS4:	OS4:
OS5:	OS5:

OS5:	OS5:
------	------

REMARKS: RUN NUMBER 1	REMARKS: RUN NUMBER 2
-----------------------	-----------------------

Log correlated to Solar Composite Log.

Objective: RIH with RST, conduct one static pass with well shut in,

over the interval HUD (1586.m MDKB) to 1480m MDKB at 900ft/hr.
--

BHP = 1979.88 psi      BHT = 169.5 degf

--	--

Schlumberger Crew:					
R.Murray, A. McLellan					
RUN 1			RUN 2		
SERVICE ORDER #:		AXWT-00098	SERVICE ORDER #:		
PROGRAM VERSION:		16C0-147	PROGRAM VERSION:		
FLUID LEVEL:		0 m	FLUID LEVEL:		
LOGGED INTERVAL	START	STOP	LOGGED INTERVAL	START	STOP
EQUIPMENT DESCRIPTION					
RUN 1			RUN 2		
SURFACE EQUIPMENT					
WITM-A PSC_16MHZ					
DOWNHOLE EQUIPMENT					
AH-SWBS-B 789 AH-SWBS-B 789			13.30		
AH-SWBS-B 788 AH-SWBS-B 788			12.61		
AH-SWBS-B 787 AH-SWBS-B 787			11.93		
AH-SWBS-B 786 AH-SWBS-B 786			11.24		
AH-SWBS-B 785 AH-SWBS-B 785			10.55		
MH-SWHS-A 759 MH-SWHS-A 759			9.87		
PSPT-B PSC-A 3918 PSPT-B 827 PSTC 806 PBMS-B 827 CQG_F_Mano 827 RTD_Thermometer 827 GR 827 CCL 827 PBMS 827			9.54		
Detail MT TelStatus CTEM			9.54		
GR			8.41		
Well_Temp CQG Manom CCL PBMS PSTC			7.48 7.37 7.25 7.02		
RST-C BLK-2 RSCH-A 111 RSC-C 132 RSS-A 106 RSXH-A 145 RSX-C 132			7.02		

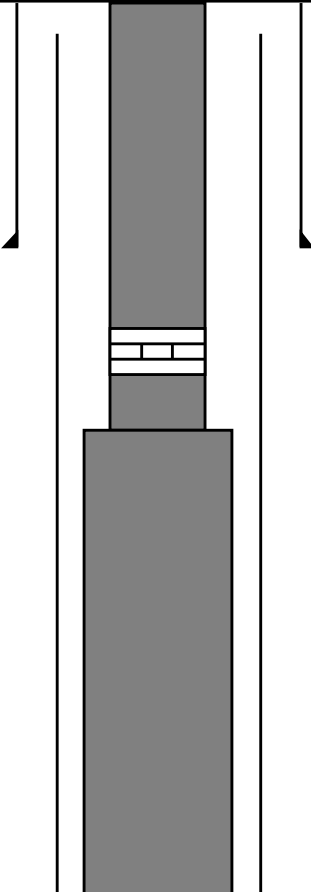
RSC-A Far  
RSC-A PNG  
RSC-A Nea  
RSX-A PNG

4.24

4.09

Tension HV 0.00  
TOOL ZERO

MAXIMUM STRING DIAMETER 1.72 IN  
MEASUREMENTS RELATIVE TO TOOL ZERO  
ALL LENGTHS IN METERS

Production String	(m)		MD	Well Schematic	(m)			Casing String
	OD	ID			MD	OD	ID	
Tubing	4.500		11.7		12.5 12.5	13.375 9.625		Casing String Casing String
SSSV Landing Nipple	4.500		124.3		642.6	13.375		Casing Shoe
Tubing	7.000		126.2					



**Company: Esso Australia Pty Ltd.**

Well: A2A

## Input DLIS Files

DEFAULT	RST_PSP_010LUP	FN:9	PRODUCER	23-Jun-2009 00:54	1586.0 M	1467.5 M
---------	----------------	------	----------	-------------------	----------	----------

## Output DLIS Files

DEFAULT	RST_PSP_012PUP	FN:11	PRODUCER	23-Jun-2009 01:24	1586.0 M	1462.0 M
---------	----------------	-------	----------	-------------------	----------	----------

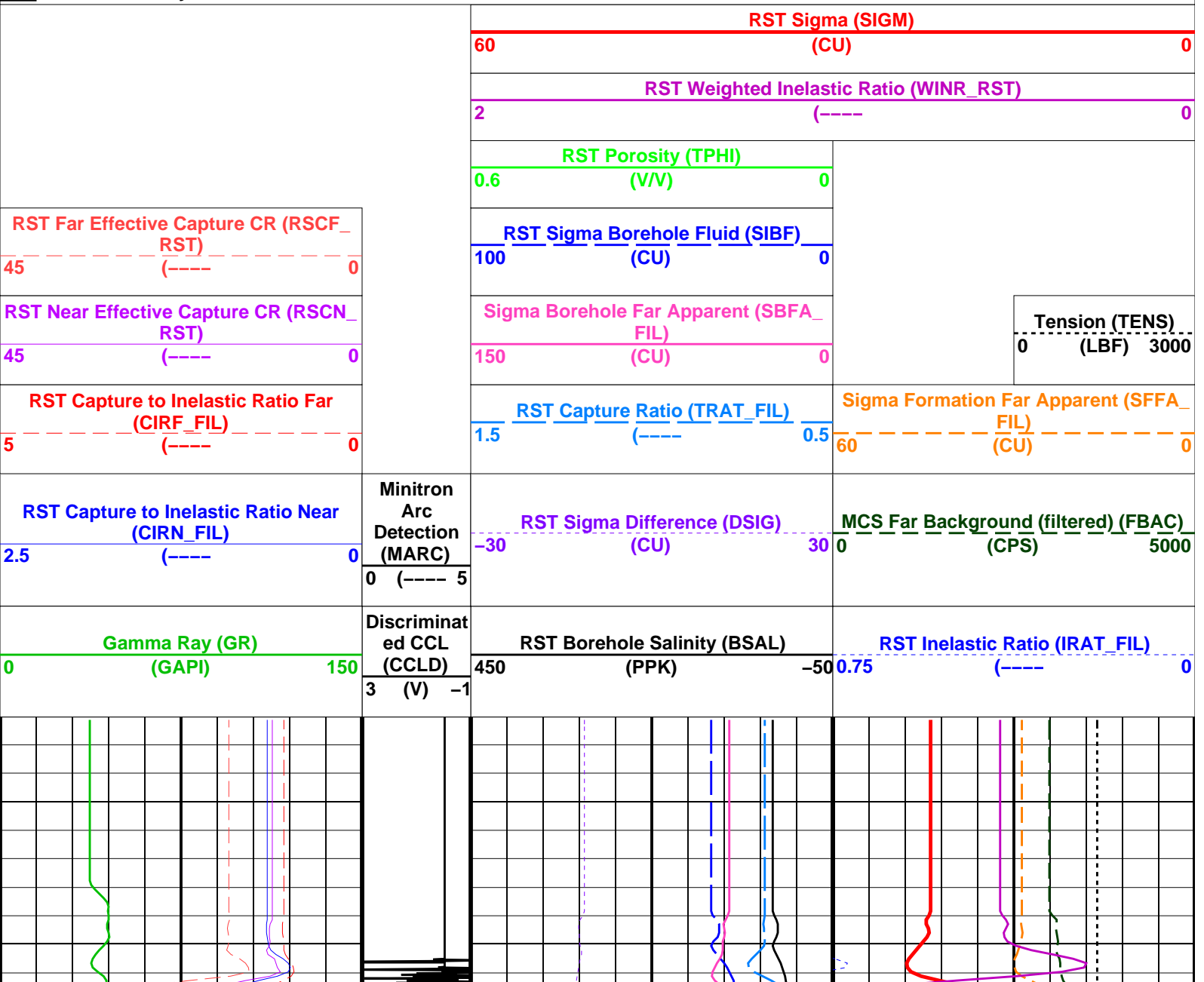
**OP System Version: 16C0-147**

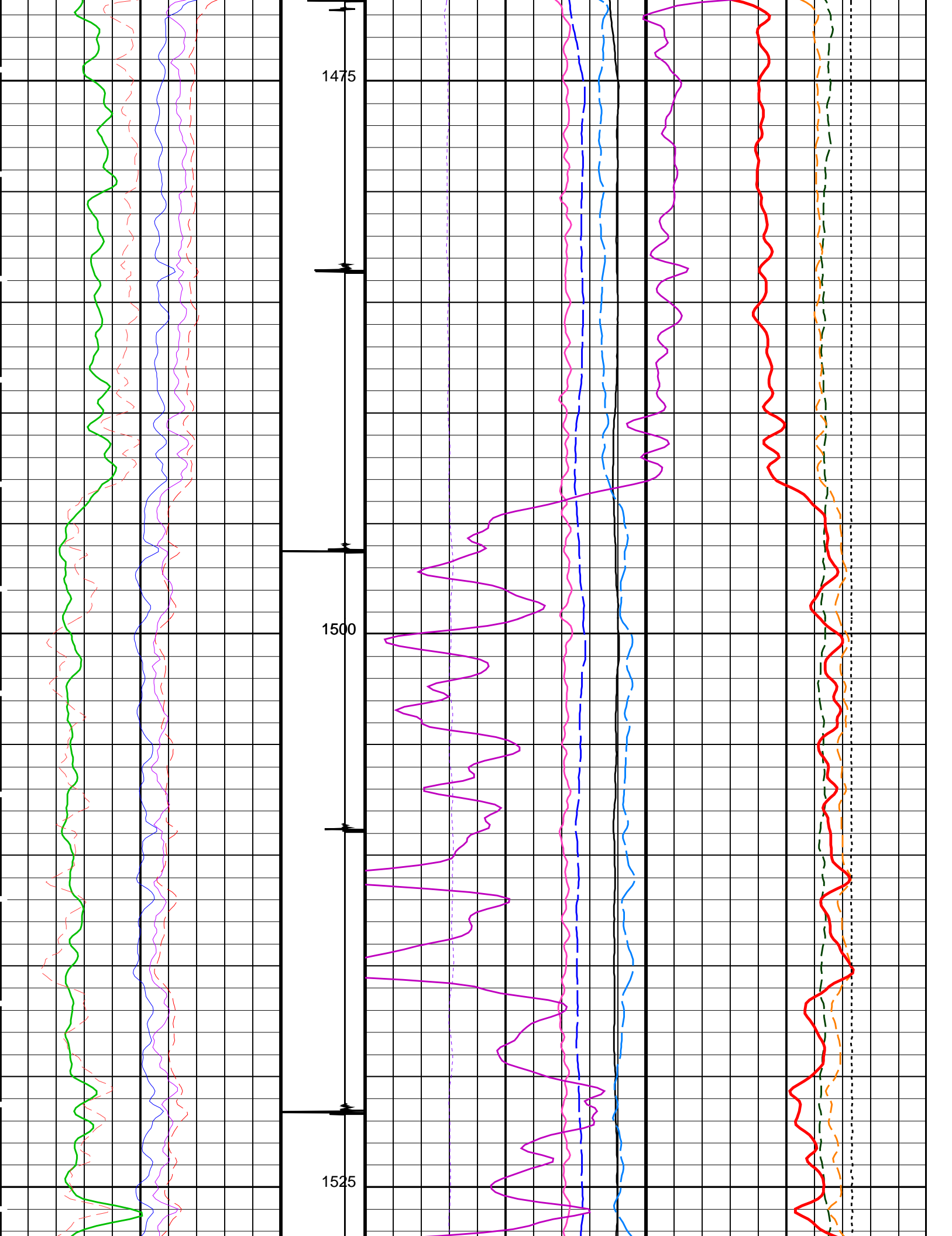
## MCM

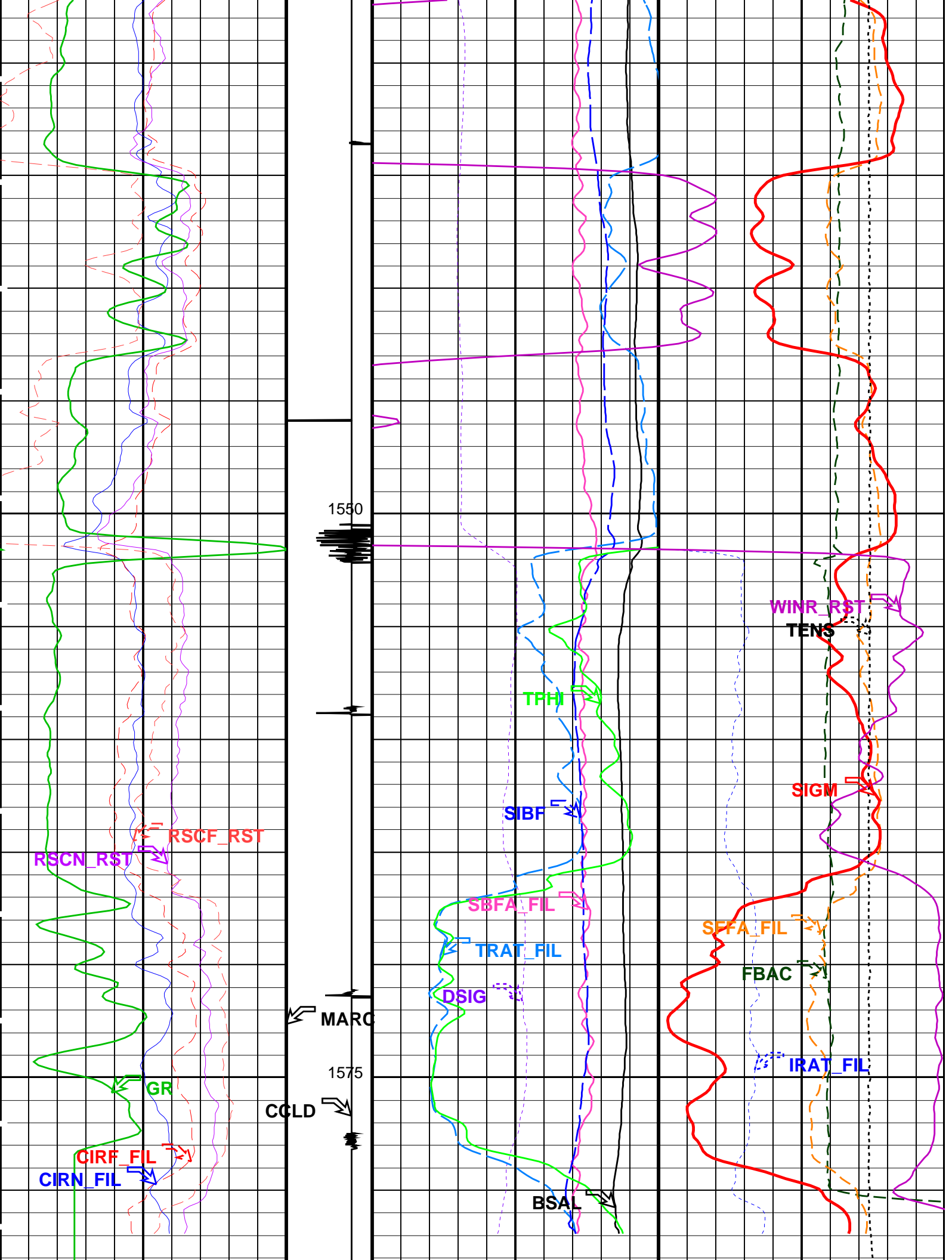
RST-C	SRPC-3777-Q4_2008_OP16	PSPT-B	SRPC-3777-Q4_2008_OP16
-------	------------------------	--------	------------------------

## PIP SUMMARY

**Time Mark Every 60 S**













GR Background Pass

MAXIS Field Log

Company: Esso Australia Pty Ltd.

Well: A2A

Input DLIS Files

DEFAULTRST\_PSP\_006LUPFN:5PRODUCER23-Jun-2009 00:281583.0 M1454.7 M

Output DLIS Files

DEFAULTRST\_PSP\_008PUPFN:7PRODUCER23-Jun-2009 00:431586.0 M1452.2 M

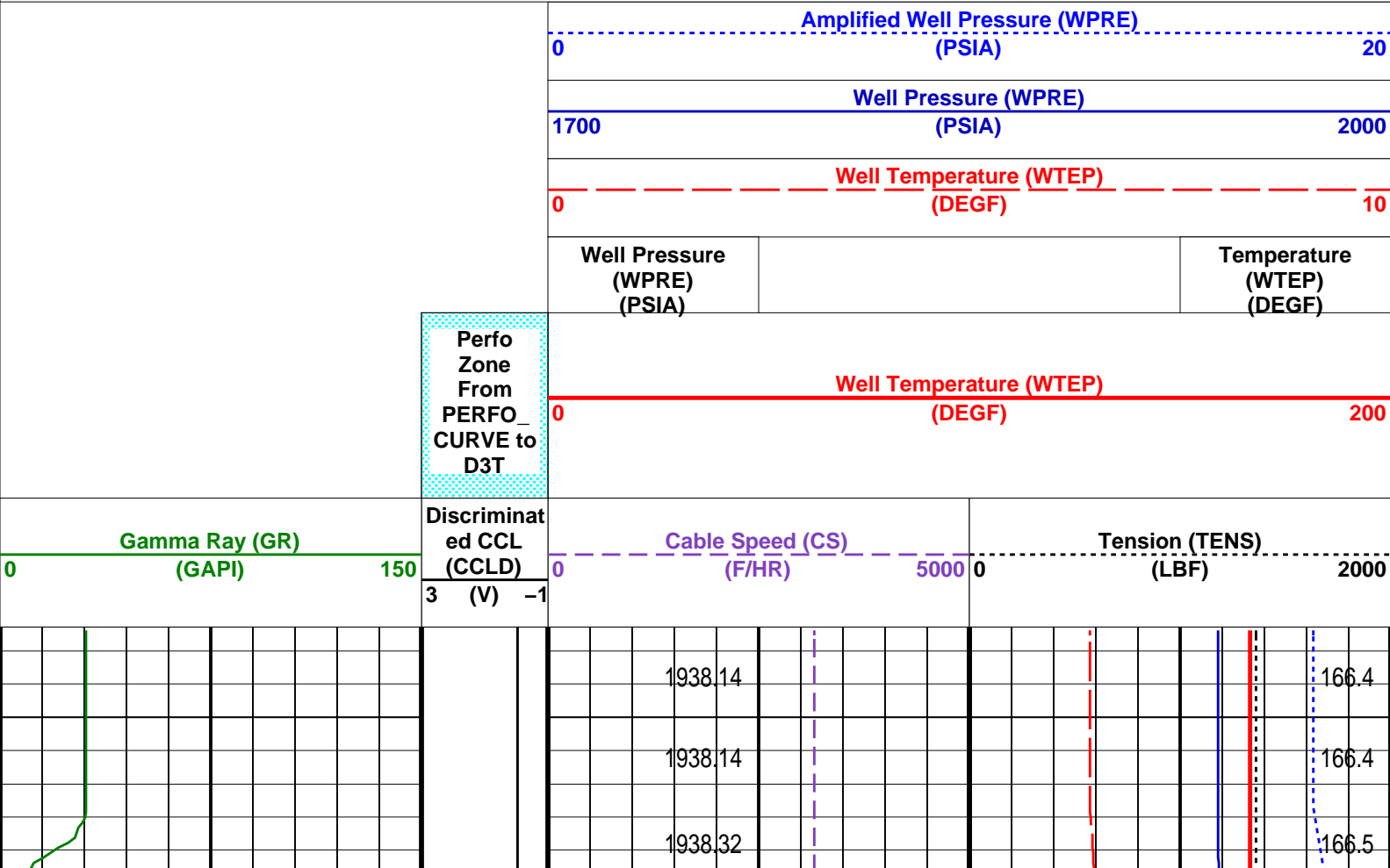
OP System Version: 16C0-147

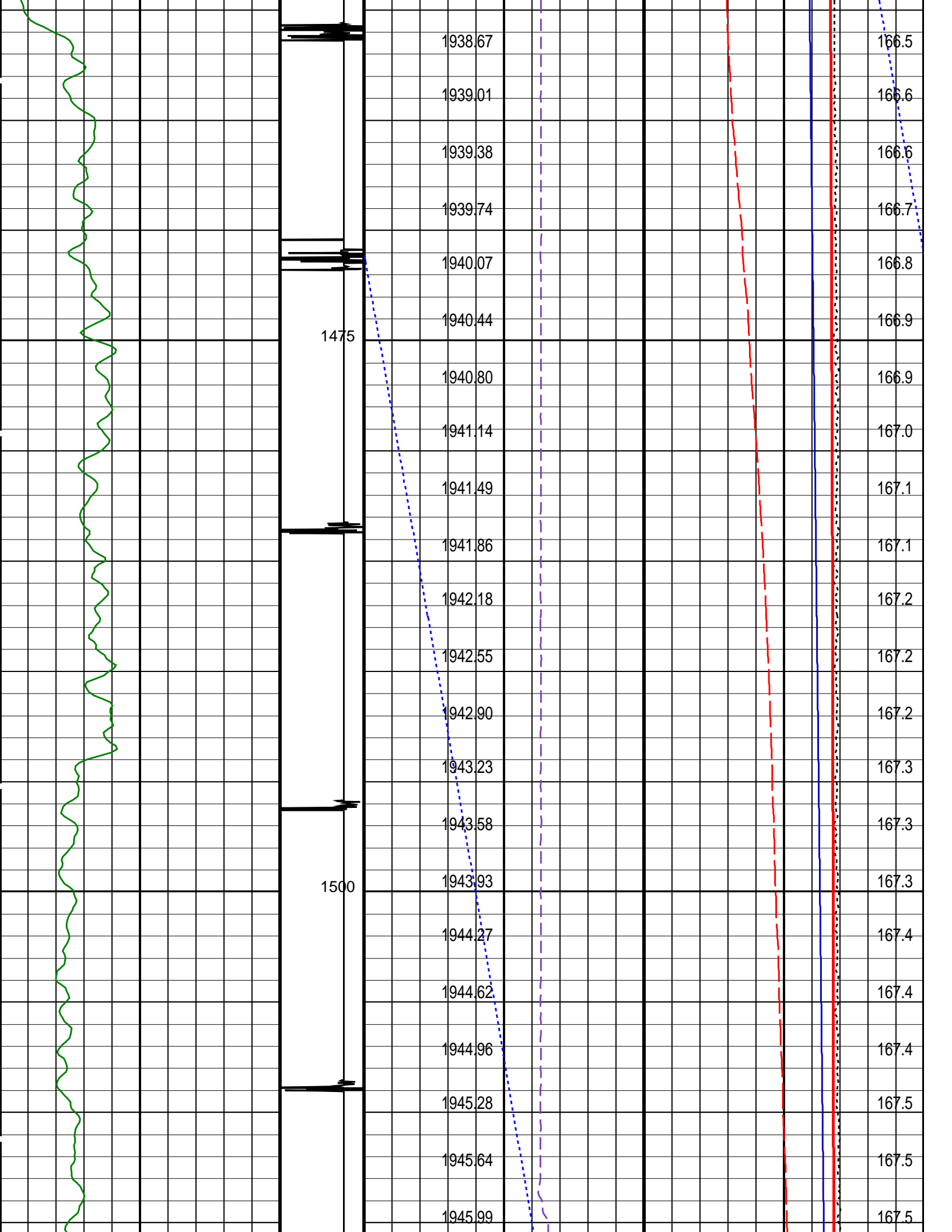
MCM

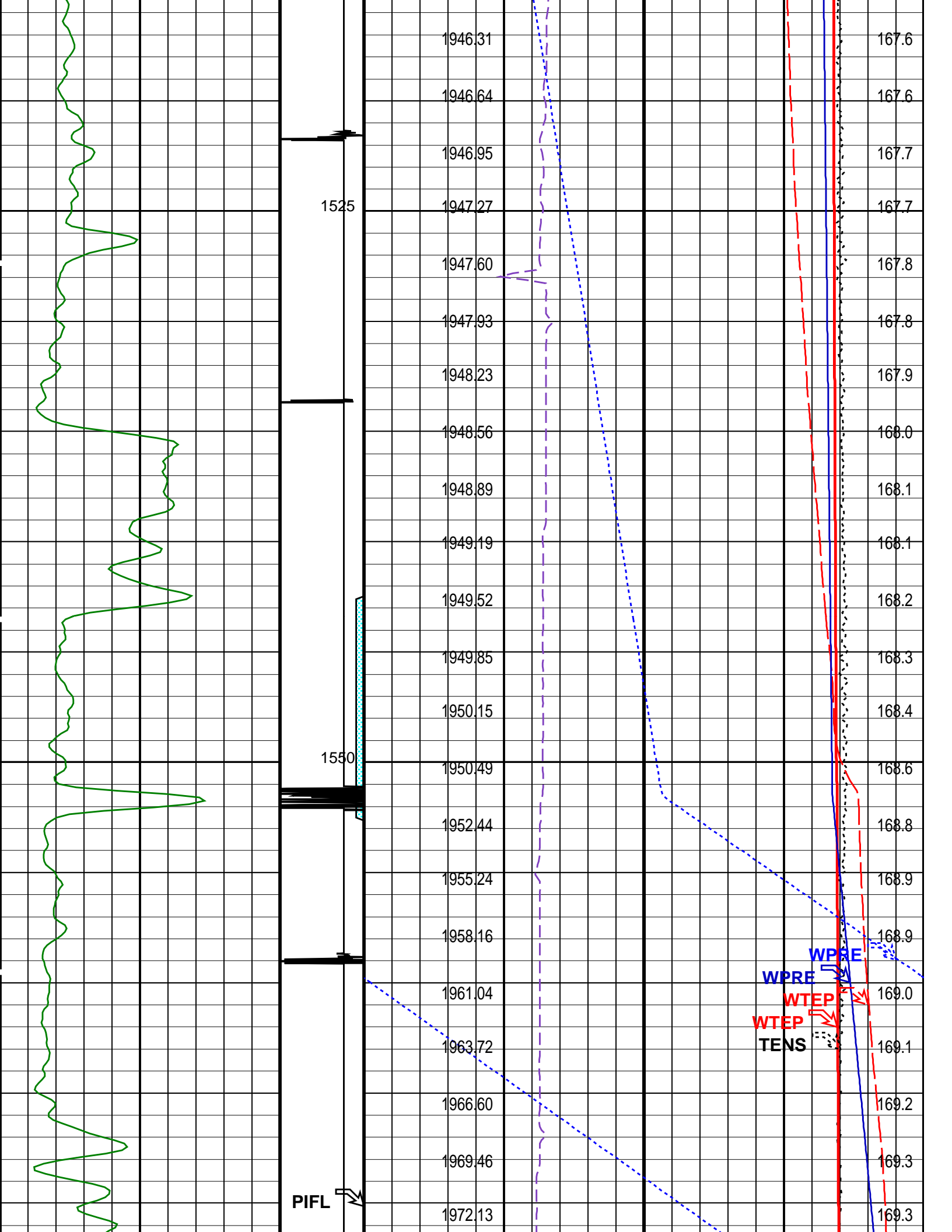
RST-C      SRPC-3777-Q4\_2008\_OP16      PSPT-B      SRPC-3777-Q4\_2008\_OP16

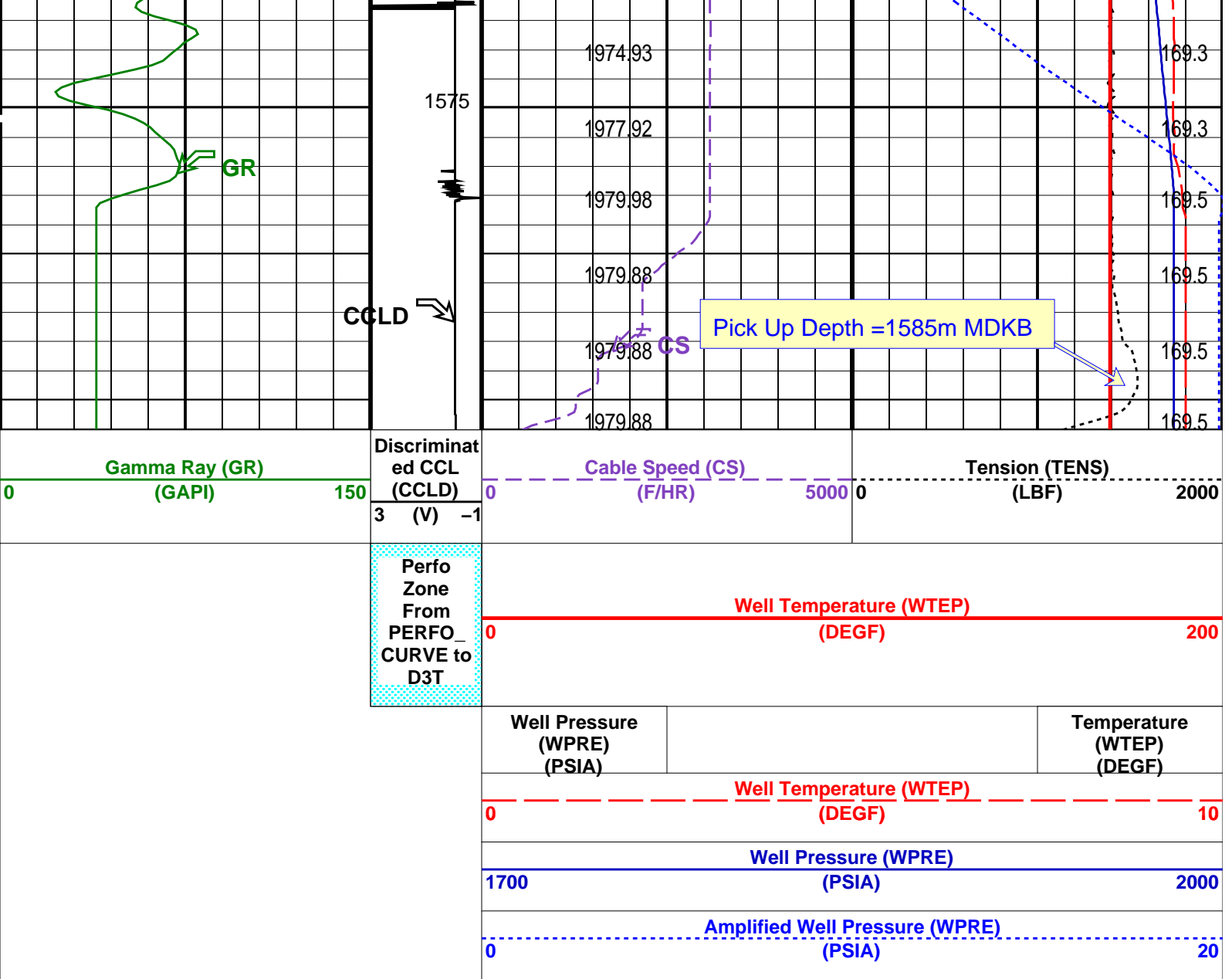
PIP SUMMARY

Time Mark Every 60 S









PIP SUMMARY						
Time Mark Every 60 S						
Format: PSP_1_1		Vertical Scale: 1:200		Graphics File Created: 23-Jun-2009 00:43		
OP System Version: 16C0-147						
MCM						
RST-C	SRPC-3777-Q4_2008_OP16		PSPT-B		SRPC-3777-Q4_2008_OP16	
Parameters						
DLIS Name		Description		Value		
System and Miscellaneous						
DO	Depth Offset for Playback		3.0		M	
PP	Playback Processing		NORMAL			
Input DLIS Files						
DEFAULT	RST_PSP_006LUP	FN:5	PRODUCER	23-Jun-2009 00:28	1583.0 M	1454.7 M
Output DLIS Files						
DEFAULT	RST_PSP_008PUP	FN:7	PRODUCER	23-Jun-2009 00:43		

Well: **A2A**  
Field: **Marlin**  
Rig: **Crane / Prod 4**  
Country: **Australia**

RST-C Sigma Survey