

Company: Esso Australia Pty Ltd.

Well: Cobia A14a

Field: Cobia

Rig: Rig 175

Country: Australia

6" Junk Basket
Max-R Setting Record

Rig 175
Cobia
Bass Strait
Cobia A14a
Esso Australia Pty Ltd.

LOCATION			
Bass Strait		Elev.:	K.B. 40.99 m
			G.L. -79.00 m
			D.F. 40.99 m
Permanent Datum:	GL	Elev.: 0.00 m	
Log Measured From:	RT	40.99 m above Perm. Datum	
Drilling Measured From:	RT		
State: Victoria	Max. Well Deviation 39.74 deg	Longitude 148°18'33.005" E	Latitude 038°26'57.568" S

Logging Date	12-Apr-2009		
Run Number	1 & 2		
Depth Driller	3043 m		
Schlumberger Depth	3011.4 m		
Bottom Log Interval	2921.25 m		
Top Log Interval	2921.25 m		
Casing Fluid Type	Brine		
Salinity			
Density	8.55 g/cm3		
Fluid Level	0 m		
BIT/CASING/TUBING STRING			
Bit Size	8.500 in		
From	0 m		
To	3043 m		
Casing/Tubing Size	7.000 in		
Weight	26 lbm/ft		
Grade	L-80		
From	0 m		
To	3040.74 m		
Maximum Recorded Temperatures			
Logger On Bottom	12-Apr-2009	4:40	
Unit Number	3929 AUSL		
Recorded By	Owen D , Gaffar F		
Witnessed By	D Daniels & M Culicut		

PVT DATA			
Oil Density	Run 1	Run 2	Run 3
Water Salinity			
Gas Gravity			
Bo			
Bw			
1/Bg			
Bubble Point Pressure			
Bubble Point Temperature			
Solution GOR			
Maximum Deviation	39.74 deg		
CEMENTING DATA			
Primary/Squeeze	Primary		
Casing String No			
Lead Cement Type			
Volume			
Density			
Water Loss			
Additives			
Tail Cement Type			
Volume			
Density			
Water Loss			
Additives			
Expected Cement Top			
Logging Date			
Run Number			
Depth Driller			
Schlumberger Depth			
Bottom Log Interval			
Top Log Interval			
Casing Fluid Type			
Salinity			
Density			
Fluid Level			
BIT/CASING/TUBING STRING			
Bit Size			
From			
To			
Casing/Tubing Size			
Weight			
Grade			
From			
To			
Maximum Recorded Temperatures			
Logger On Bottom			
Unit Number			
Recorded By			
Witnessed By			

DEPTH SUMMARY LISTING

Date Created: 12-APR-2009 18:17:09

Depth System Equipment

Depth Measuring Device		Tension Device		Logging Cable	
Type:	IDW-E	Type:	CMTD-B/A	Type:	7-46V XS
Serial Number:	727	Serial Number:	2268	Serial Number:	708145
Calibration Date:	03-Nov-2009	Calibration Date:	28-Mar-2009	Length:	7315 M
Calibrator Serial Number:	30	Calibrator Serial Number:	1173	Conveyance Method:	Wireline
Calibration Cable Type:	7-46V XS	Number of Calibration Points:	10	Rig Type:	Offshore Fixed
Wheel Correction 1:	-2	Calibration RMS:	10		
Wheel Correction 2:	-3	Calibration Peak Error:	15		

Depth Control Parameters

Log Sequence:	Subsequent Trip To the Well
Reference Log Name:	Cobia A14a
Reference Log Run Number:	Not supplied
Reference Log Date:	Not supplied
Subsequent Trip Down Log Correction:	

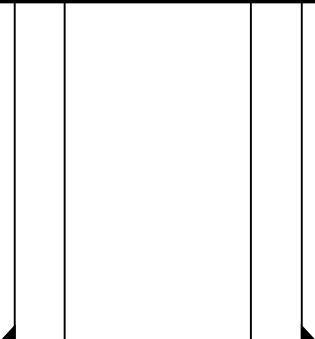
Depth Control Remarks

1. Used IDW as primary depth control
2. Used Z-Chart as secondary depth control
3. Correlated to Schlumberger D&M LWD log provided by client
4. All readings after MaxR setting are off depth due to the large amount of weight dropped
- 5.
- 6.

DISCLAIMER

THE USE OF AND RELIANCE UPON THIS RECORDED-DATA BY THE HEREIN NAMED COMPANY (AND ANY OF ITS AFFILIATES, PARTNERS, REPRESENTATIVES, AGENTS, CONSULTANTS AND EMPLOYEES) IS SUBJECT TO THE TERMS AND CONDITIONS AGREED UPON BETWEEN SCHLUMBERGER AND THE COMPANY, INCLUDING: (a) RESTRICTIONS ON USE OF THE RECORDED-DATA; (b) DISCLAIMERS AND WAIVERS OF WARRANTIES AND REPRESENTATIONS REGARDING COMPANY'S USE OF AND RELIANCE UPON THE RECORDED-DATA; AND (c) CUSTOMER'S FULL AND SOLE RESPONSIBILITY FOR ANY INFERENCE DRAWN OR DECISION MADE IN CONNECTION WITH THE USE OF THIS RECORDED-DATA.

OTHER SERVICES1	OTHER SERVICES2
OS1: None	OS1:
OS2:	OS2:
OS3:	OS3:
OS4:	OS4:
OS5:	OS5:
REMARKS: RUN NUMBER 1	REMARKS: RUN NUMBER 2
Log correlated to Schlumberger LWD log .	
Objective: Run 6" Junk Basket to HUD to ensure access for Max–R.	
Set Max–R on depth using a CPST and PGGT .	
Maximum Well Deviation = 39.74 deg @ 2936 m MDKB	
HUD Tagged @ 3011.4m MDKB with Junk Basket	
Max–R perforation interval 2930 – 2932.5m	

Production String	(in)		(m)	Well Schematic			(m)	(in)		Casing String
	OD	ID	MD				MD	OD	ID	
							0.0	10.750		Casing String
								603.0	10.750	

[illegible]

Job Events Summary

MAXIS Field Log

Schlumberger Job Event Summary

	Time	Elapsed Time	Depth (M)	File
Simulated Log	11-Apr-2009 22:31	000:03		PERFO_005LUP
Hot check for JB run				
Log Pass (down)	12-Apr-2009 3:20	001:19	7.9 - 3018.0	PERFO_009LDP
RIH for JB				
Log Pass (up)	12-Apr-2009 4:40	001:18	3018.0 - 98.8	PERFO_010LUP
POOH for JB				
Simulated Log	12-Apr-2009 14:21	000:15		PERFO_018LUP
Hot check for MaxR run				
Log Pass (down)	12-Apr-2009 16:05	000:54	598.8 - 2950.6	PERFO_020LDP
RIH for MaxR				
Log Pass (up)	12-Apr-2009 17:06	000:09	2963.6 - 2884.0	PERFO_024LUP
Correlation log for MaxR				
Log Pass (up)	12-Apr-2009 17:30	000:15	2965.4 - 2886.0	PERFO_026LUP
Setting pass MaxR				

Schlumberger

Max-R Setting pass

MAXIS Field Log

Company: Esso Australia Pty Ltd.

Well: Cobia A14a

Output DLIS Files

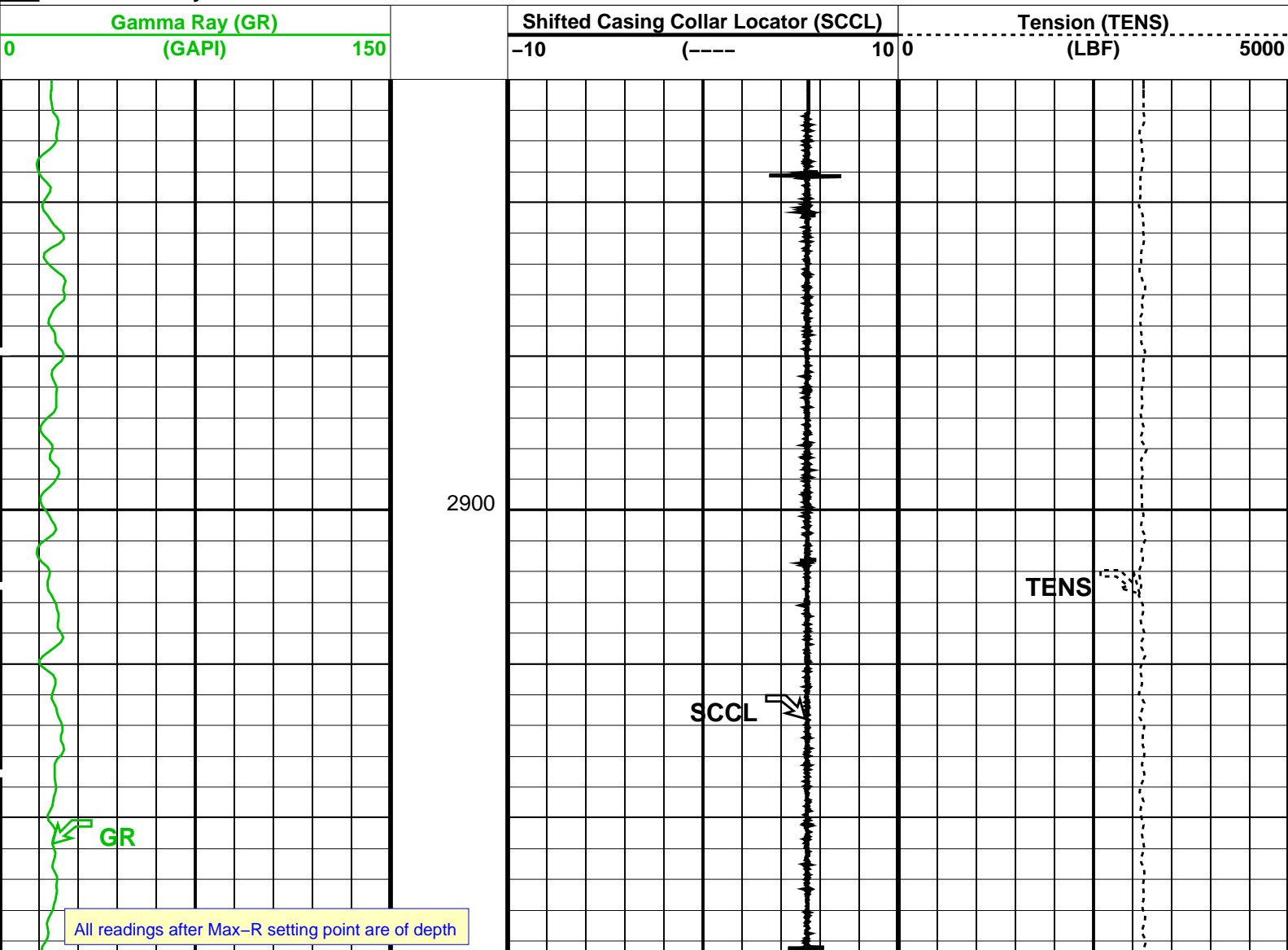
DEFAULT PERFO_026LUP FN:24 PRODUCER 12-Apr-2009 17:30 2965.4 M 2886.0 M

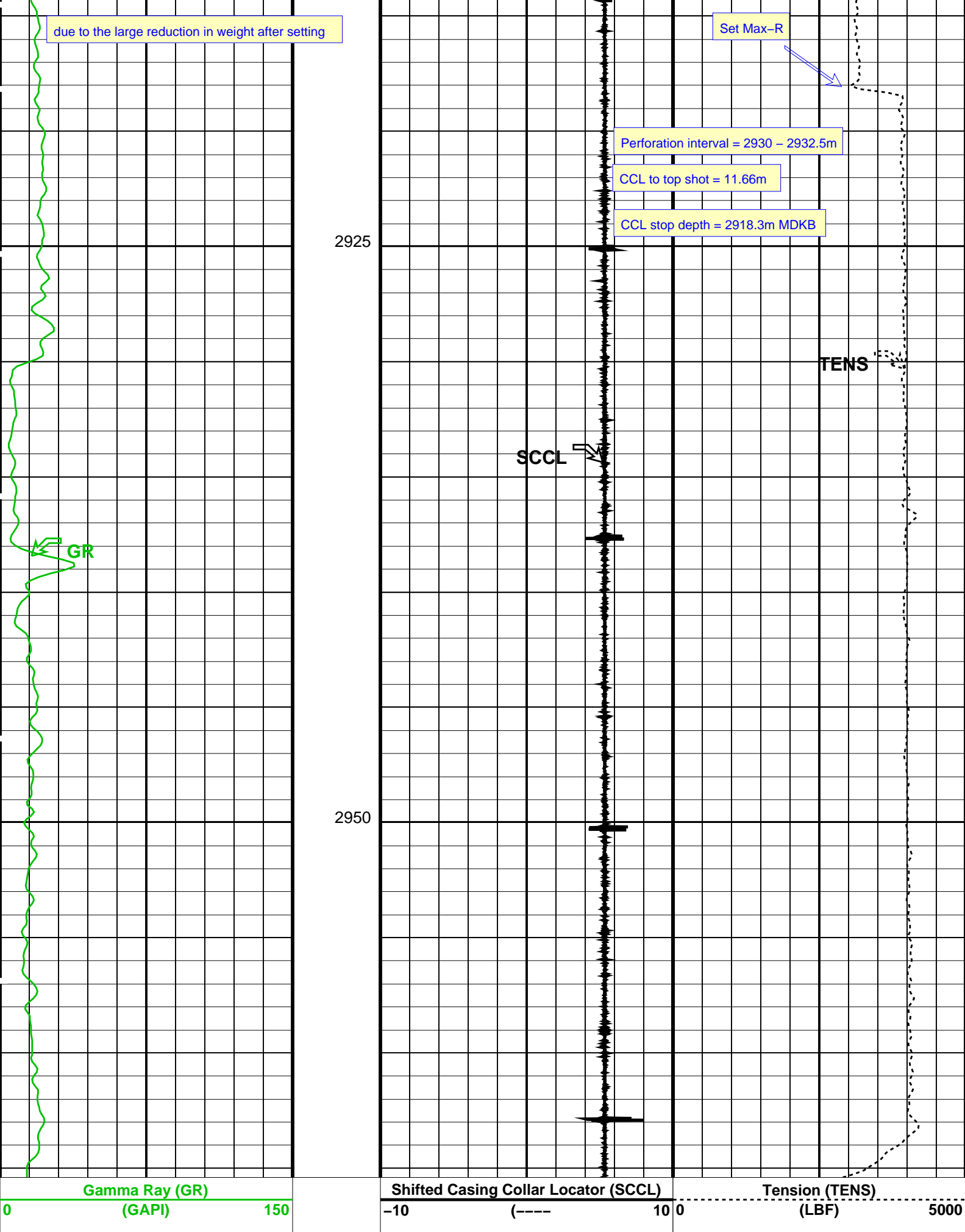
OP System Version: 17C0-154

PGGT-D 17C0-154 SHM_GUN 17C0-154

PIP SUMMARY

Time Mark Every 60 S






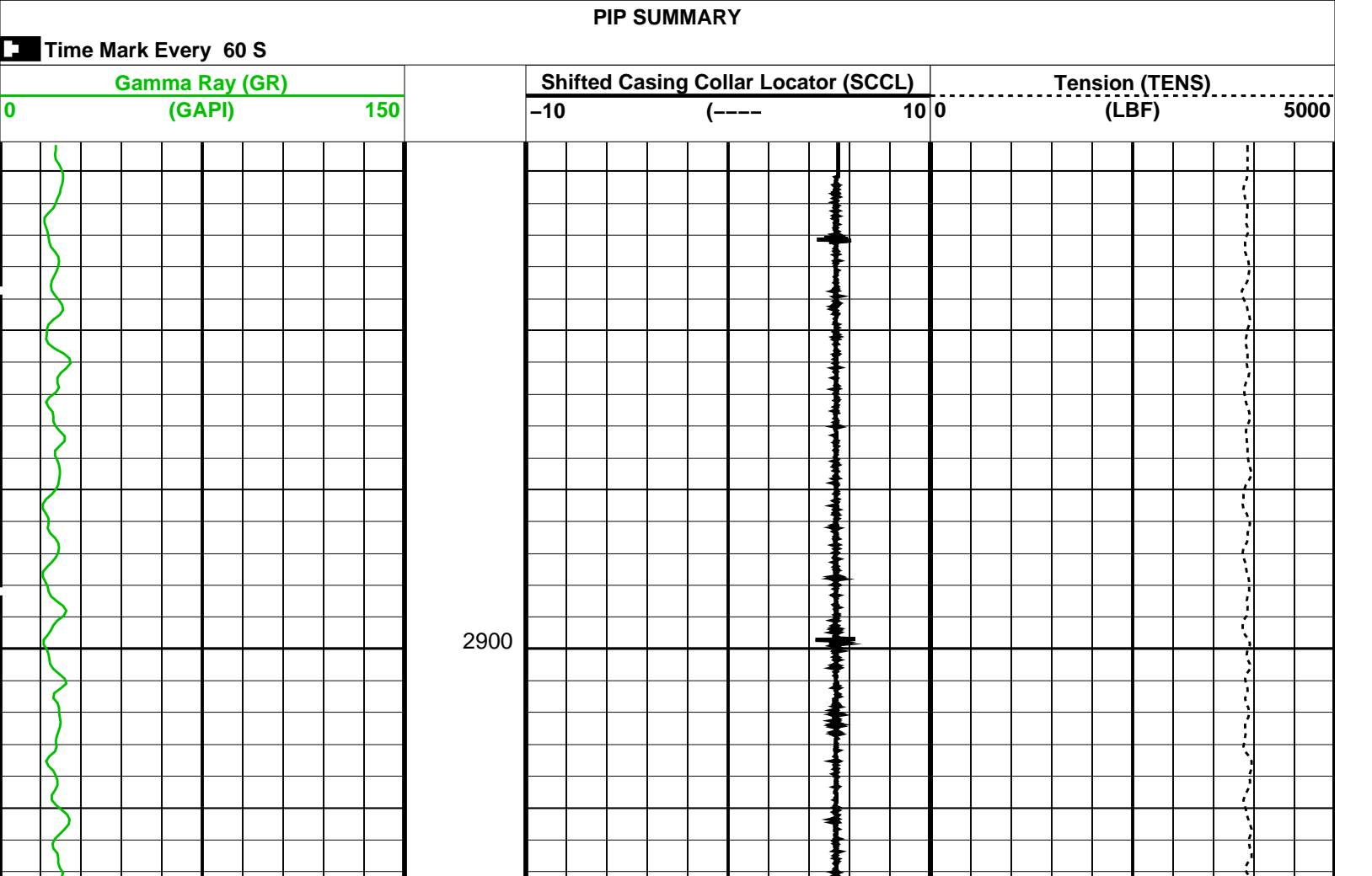
PIP SUMMARY

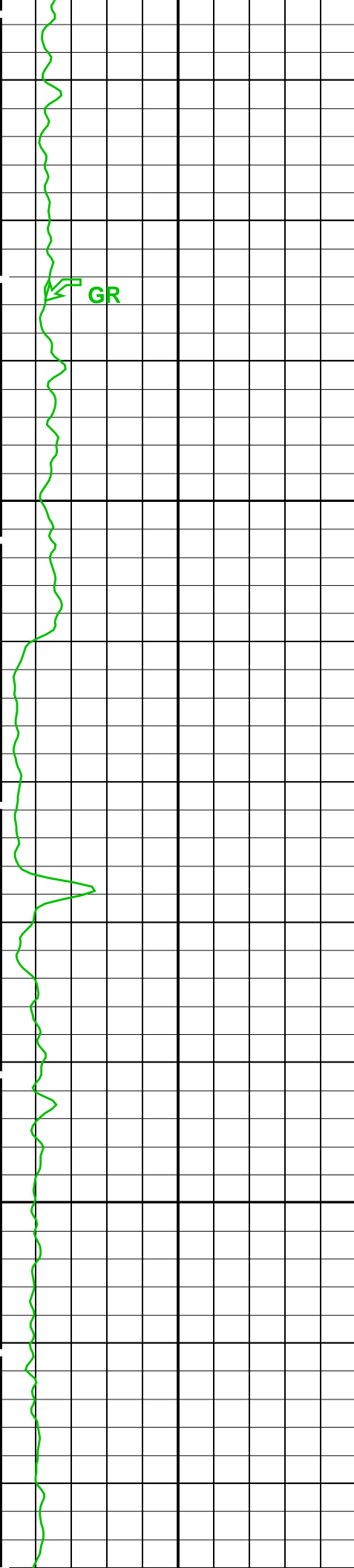
Time Mark Every 60 S

PERFORATION INTERVAL: 2930 - 2932.5m Casing Collar Locator (CCL) Stop Depth: 2918.3m MDKB

Max-R
Correlation pass

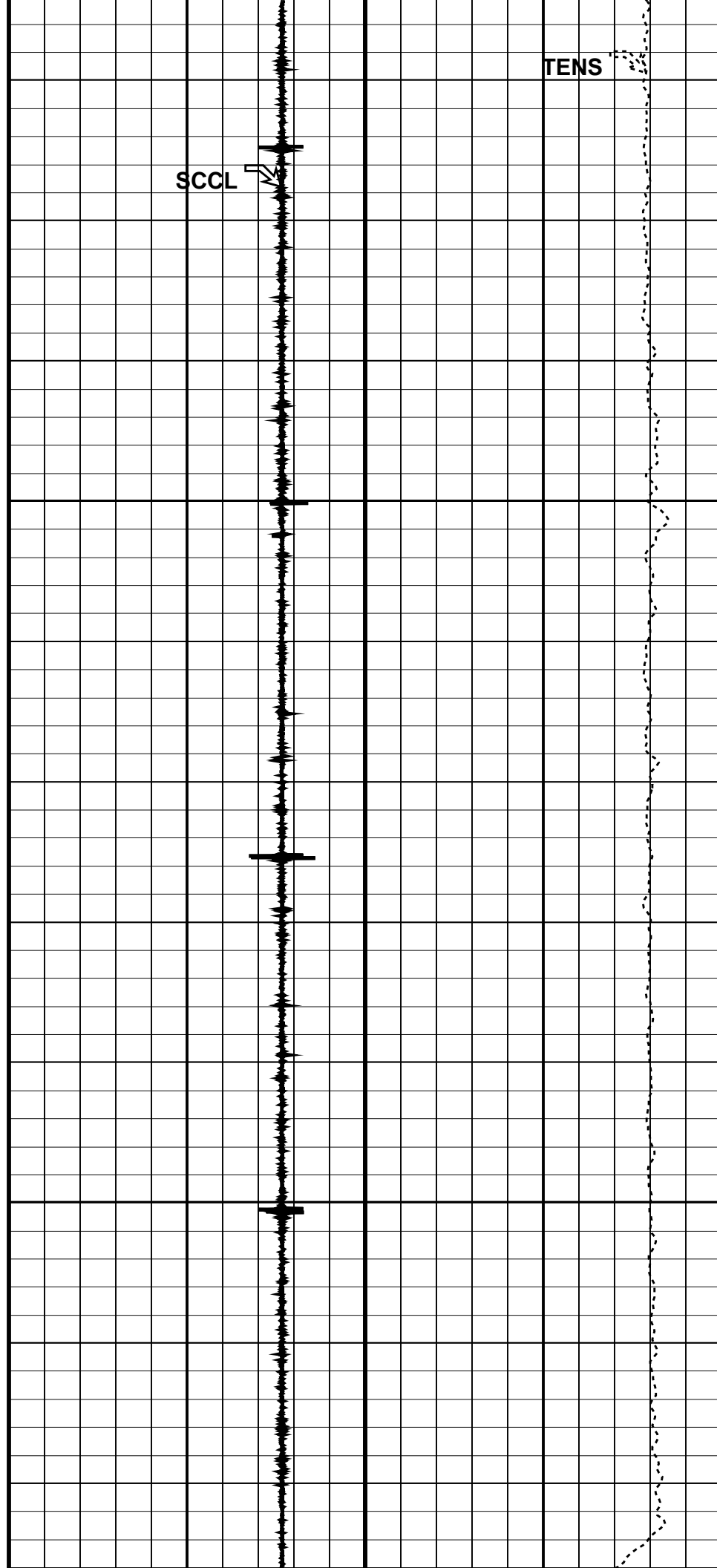
MAXIS Field Log





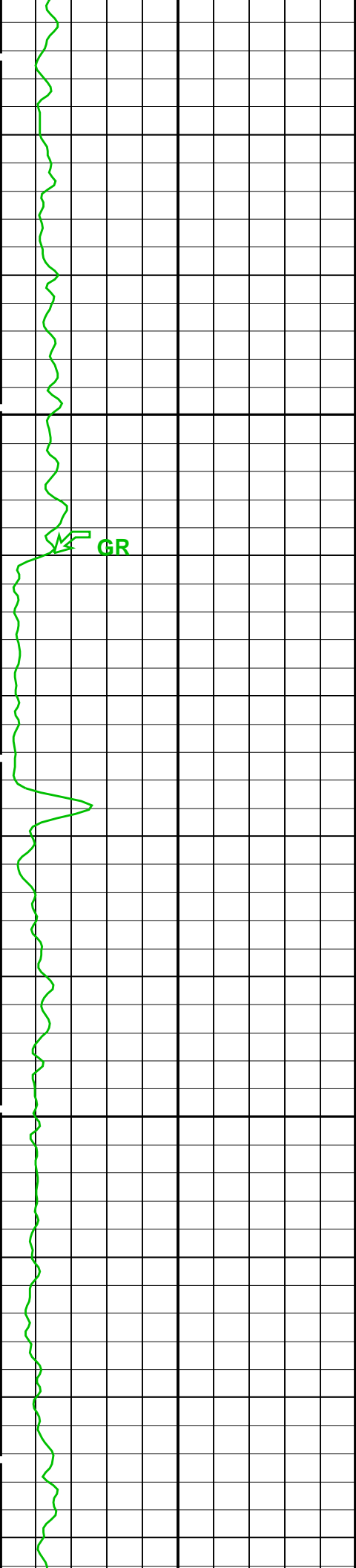
2925

2950



SCCL

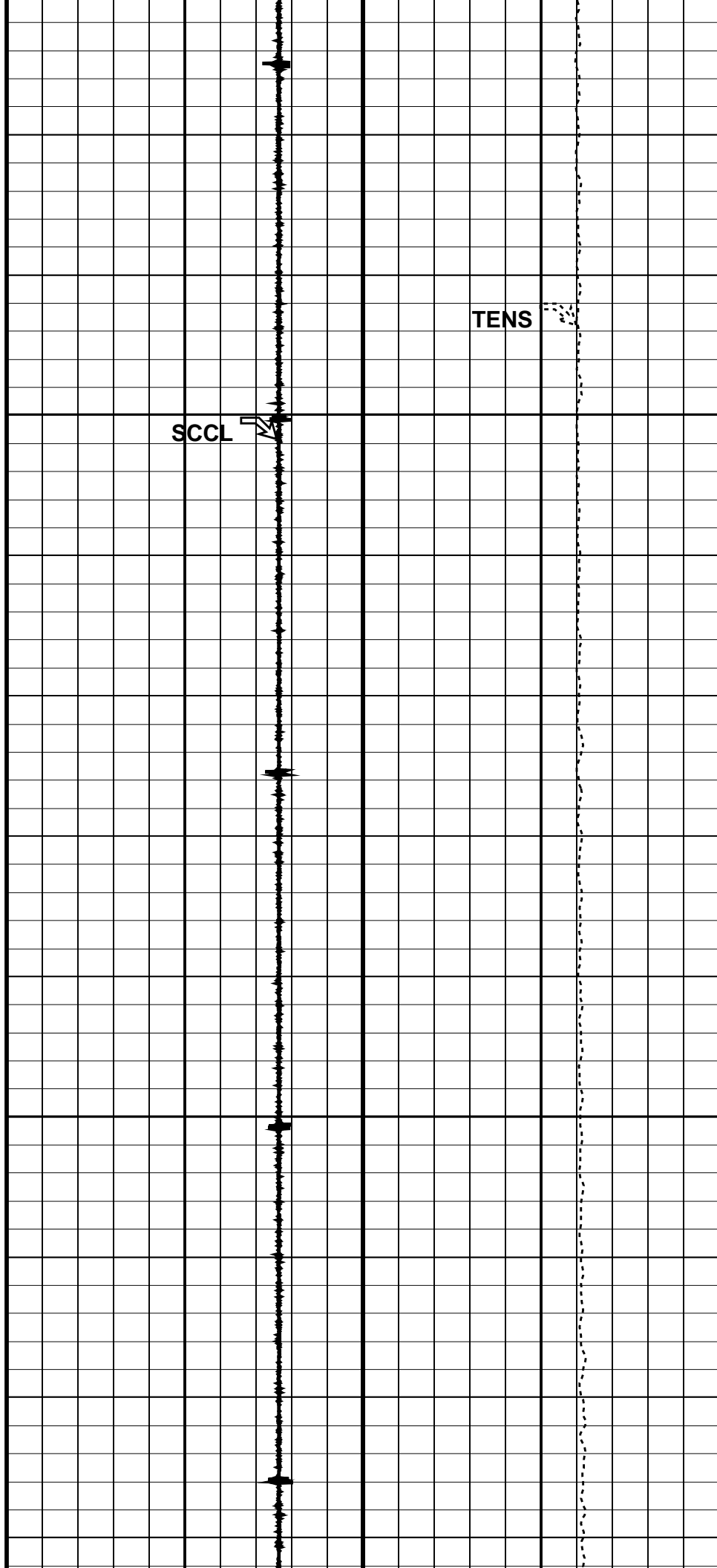
TENS



GR

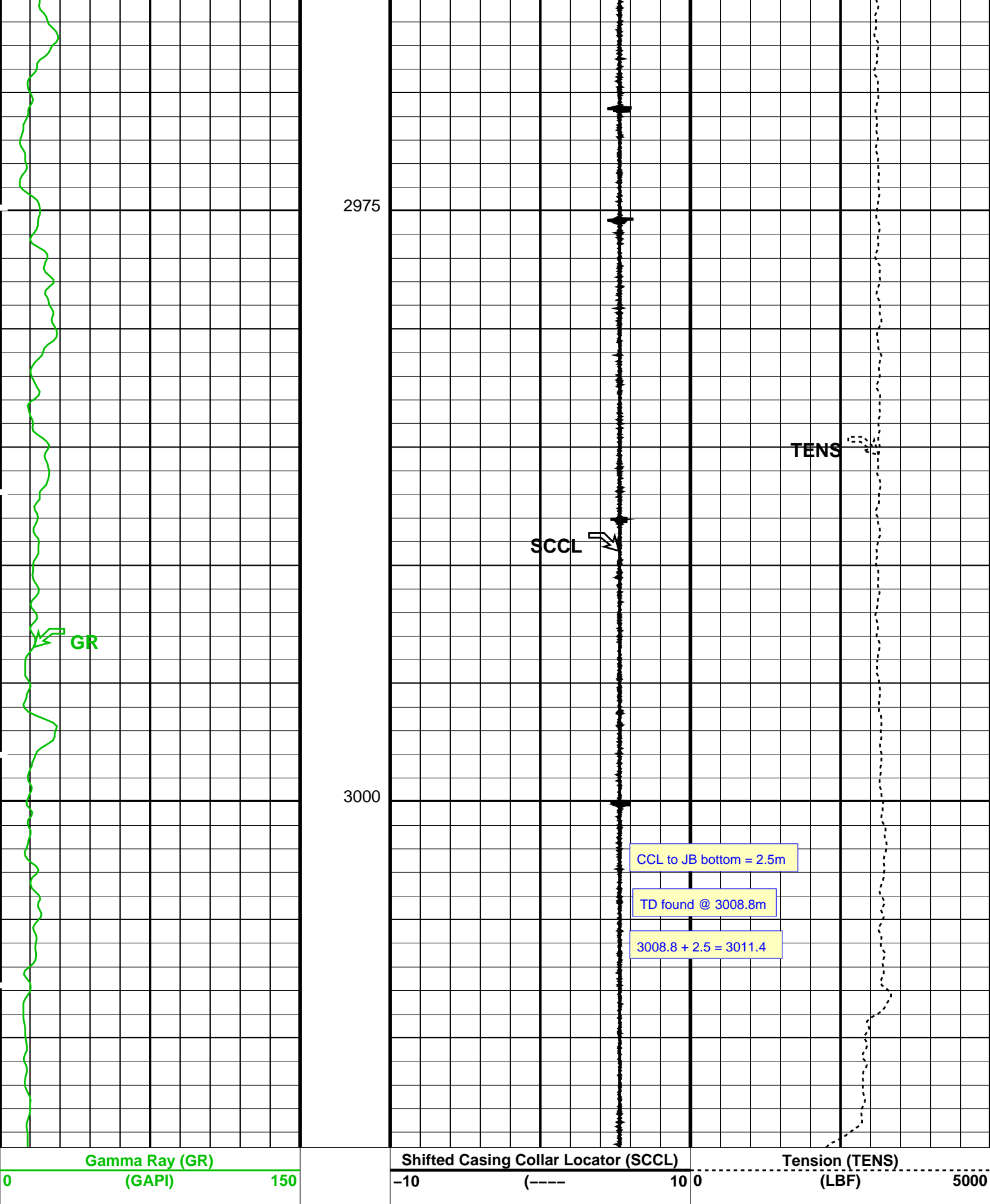
2925

2950



SCCL

TENS



PIP SUMMARY

Time Mark Every 60 S

Parameters		
DI IS Name	Description	Value

DLIS Name	Description	Value
DO PP	System and Miscellaneous Depth Offset for Playback Playback Processing	-3.4 M NORMAL
Format: PERFO_1 Vertical Scale: 1:200 Graphics File Created: 12-Apr-2009 12:58		
OP System Version: 17C0-154		
PGGT-D	17C0-154	SHM_GUN 17C0-154
Input DLIS Files		
DEFAULT	SPLICE_PERFO_013	FN:1 PRODUCER 12-Apr-2009 12:55 3018.0 M 2900.0 M
Output DLIS Files		
DEFAULT	PERFO_015PUP	FN:13 PRODUCER 12-Apr-2009 12:58

Company: **Esso Australia Pty Ltd.**

Schlumberger

Well: **Cobia A14a**

Field: **Cobia**

Rig: Rig 175

Country: **Australia**

6" Junk Basket Max-R Setting Record