



Company: Esso Australia Ltd.

Well: BMA A-9b

Field: Bream A

Rig: Prod 3 / ISDL 453

Country: Australia

EZSV  
Bridge Plug  
Setting Record

LOCATION	
Gippsland	Elev.: K.B. 33.5 m
Basin	G.L. -59 m
Bass Strait	D.F. 33.5 m
Permanent Datum:	Mean Sea Level
Log Measured From:	Kelly Bushing
Drilling Measured From:	Kelly Bushing

State: Victoria	Max. Well Deviation 49 deg	Longitude 147° 46' 15"E	Latitude 38° 30' 04" S
-----------------	----------------------------	-------------------------	------------------------

Logging Date	27-Feb-2006
--------------	-------------

Run Number	1
------------	---

Depth Driller	2032 m
---------------	--------

Schlumberger Depth	not tagged
--------------------	------------

Bottom Log Interval	1763 m
---------------------	--------

Top Log Interval	1700 m
------------------	--------

Casing Fluid Type	Inhibited Sea Water
-------------------	---------------------

Salinity	
----------	--

Density	
---------	--

Fluid Level	
-------------	--

BIT/CASING/TUBING STRING	
--------------------------	--

Bit Size	8.500 in
----------	----------

From	2062 m
------	--------

To	3032 m
----	--------

Casing/Tubing Size	9.688 in
--------------------	----------

Weight	47 lbm/ft
--------	-----------

Grade	N-80
-------	------

From	12.45 m
------	---------

To	2238 m
----	--------

Maximum Recorded Temperatures			
-------------------------------	--	--	--

Logger On Bottom	27-Feb-2006	4:00	
------------------	-------------	------	--

Unit Number	41	AUSL	
-------------	----	------	--

Recorded By	Joel Hogan		
-------------	------------	--	--

Witnessed By	Glenn Campbell, Brian Davis		
--------------	-----------------------------	--	--

PVT DATA			
Oil Density	Run 1	Run 2	Run
Water Salinity			
Gas Gravity			
Bo			
Bw			
1/Bg			
Bubble Point Pressure			
Bubble Point Temperature			
Solution GOR			
Maximum Deviation	49 deg		
CEMENTING DATA			
Primary/Squeeze	Primary		
Casing String No			
Lead Cement Type			
Volume			
Density			
Water Loss			
Additives			
Tail Cement Type			
Volume			
Density			
Water Loss			
Additives			
Expected Cement Top			

Logging Date	
--------------	--

Run Number	
------------	--

Depth Driller	
---------------	--

Schlumberger Depth	
--------------------	--

Bottom Log Interval	
---------------------	--

Top Log Interval	
------------------	--

Casing Fluid Type	
-------------------	--

Salinity	
----------	--

Density	
---------	--

Fluid Level	
-------------	--

BIT/CASING/TUBING STRING	
--------------------------	--

Bit Size	
----------	--

From	
------	--

To	
----	--

Casing/Tubing Size	
--------------------	--

Weight	
--------	--

Grade	
-------	--

From	
------	--

To	
----	--

Maximum Recorded Temperatures			
-------------------------------	--	--	--

Logger On Bottom			
------------------	--	--	--

Unit Number			
-------------	--	--	--

Recorded By			
-------------	--	--	--

Witnessed By			
--------------	--	--	--

## DEPTH SUMMARY LISTING

Date Created: 27-FEB-2006 10:23:02

## Depth System Equipment

Depth Measuring Device		Tension Device		Logging Cable	
Type:	IDW-H	Type:	CMTD-B/A	Type:	
Serial Number:	796	Serial Number:	1721	Serial Number:	7-46ZVXS
Calibration Date:	09 Jun 05	Calibration Date:	15 Feb 05	Length:	73383
Calibrator Serial Number:	1009	Calibrator Serial Number:	1051		7307.00 M
Calibration Cable Type:	2-32ZT	Calibration Gain:	0.81	Conveyance Method:	Wireline
Wheel Correction 1:	-6	Calibration Offset:	217.00	Rig Type:	Offshore_Fixed
Wheel Correction 2:	-6				

## Depth Control Parameters

Log Sequence:	Subsequent Trip To the Well
Reference Log Name:	Tubing Tally supplied by client
Reference Log Run Number:	none
Reference Log Date:	none
Subsequent Trip Down Log Correction:	0.00 M

### Depth Control Remarks

1.	
2.	
3.	
4.	
5.	
6.	

## DISCLAIMER

THE USE OF AND RELIANCE UPON THIS RECORDED-DATA BY THE HEREIN NAMED COMPANY (AND ANY OF ITS AFFILIATES, PARTNERS, REPRESENTATIVES, AGENTS, CONSULTANTS AND EMPLOYEES) IS SUBJECT TO THE TERMS AND CONDITIONS AGREED UPON BETWEEN SCHLUMBERGER AND THE COMPANY, INCLUDING: (a) RESTRICTIONS ON USE OF THE RECORDED-DATA; (b) DISCLAIMERS AND WAIVERS OF WARRANTIES AND REPRESENTATIONS REGARDING COMPANY'S USE OF AND RELIANCE UPON THE RECORDED-DATA; AND (c) CUSTOMER'S FULL AND SOLE RESPONSIBILITY FOR ANY INFERENCE DRAWN OR DECISION MADE IN CONNECTION WITH THE USE OF THIS RECORDED-DATA.






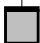

OTHER SERVICES1 OS1: none OS2: OS3: OS4: OS5:	OTHER SERVICES2 OS1: OS2: OS3: OS4: OS5:
REMARKS: RUN NUMBER 1	REMARKS: RUN NUMBER 2
Log correlated to Tubing tally supplied by client	
Purpose of log: to set bridge plug in casing at 1763mMDKB	
RIH with bridge plug, set above collar located at 1764.4mMDKB	
CCL to top seal of plug = 3m	
CCL stop depth = 1760mMDKB	
Plug set at 1763mMDKB	

Bridge plug was set to allow whipstock to be set above plug	
to allow for milling window.	
Schlumberger crew: Ben Taylor, Kevn Kerr (days)	
Paul Flood, Mat Ward (nights)	

RUN 1			RUN 2		
SERVICE ORDER #:			SERVICE ORDER #:		
PROGRAM VERSION:			PROGRAM VERSION:		
FLUID LEVEL:			FLUID LEVEL:		
LOGGED INTERVAL	START	STOP	LOGGED INTERVAL	START	STOP

EQUIPMENT DESCRIPTION					
RUN 1			RUN 2		

SURFACE EQUIPMENT		
SHM-EA		

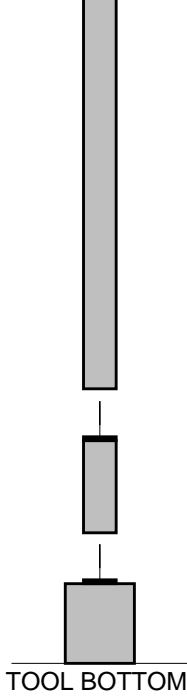
DOWNHOLE EQUIPMENT		
PEH-A PEH-A		5.43
AH-64 AH-64		4.88
PGGT-D PGGC 123 PGGH-D		4.48
Gamma Ray		1.07
Casing Co Tension		TOOL ZERO
AH-83 AH-83		2.69
AH-CPST		2.54

--	--	--	--	--	--

AH-CPST

AH-Plug Adaptor  
AH-Plug Adaptor

SHM\_GUN  
GUN-Bridge Plug



0.76

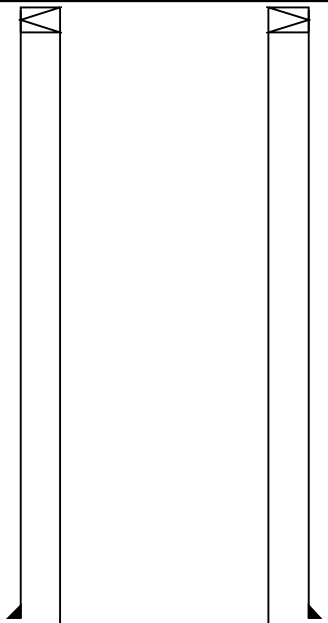
0.36

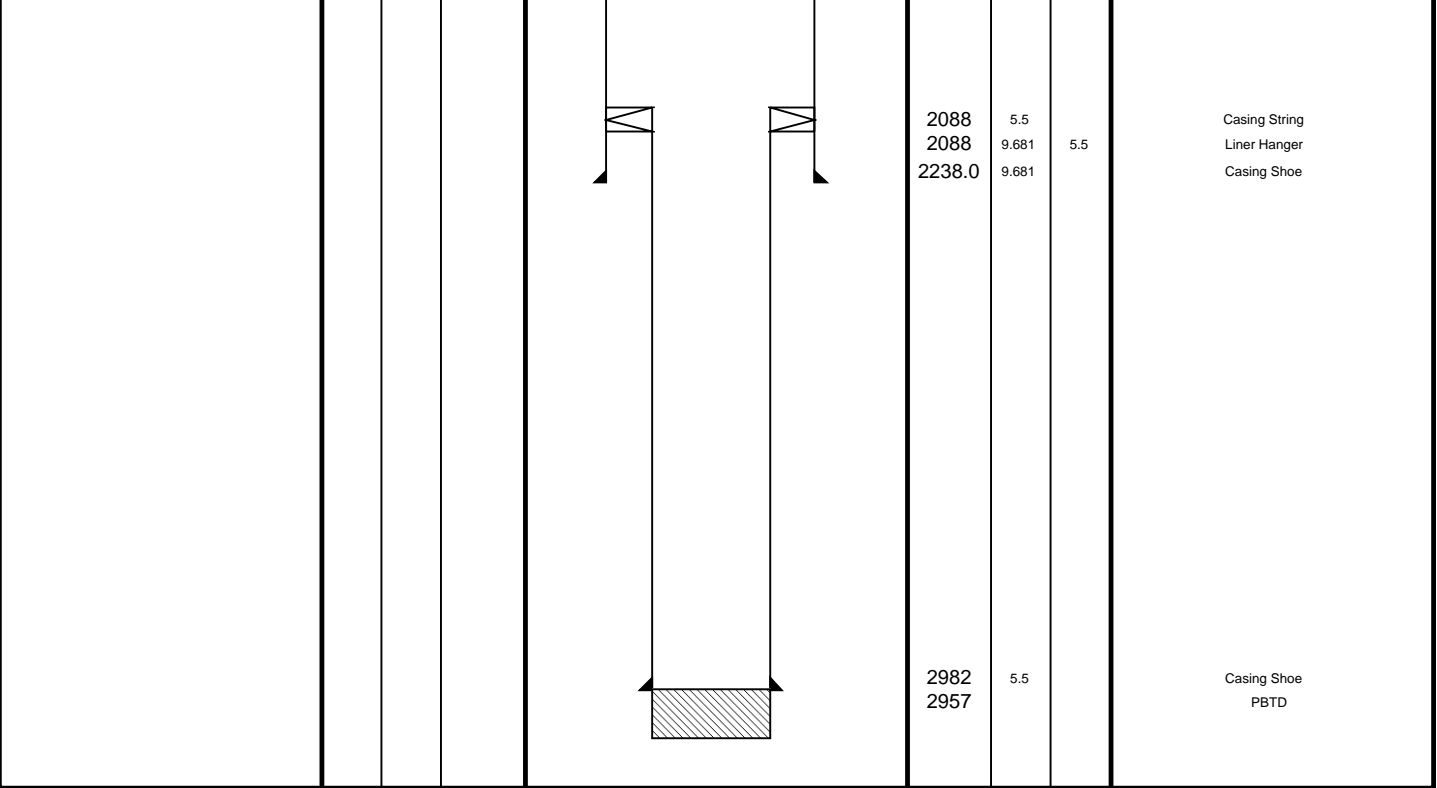
MAXIMUM STRING DIAMETER 7.00 IN  
MEASUREMENTS RELATIVE TO TOOL ZERO  
ALL LENGTHS IN METERS

Client: Esso Australia Ltd.  
Well: BMA A-9b  
Field: Bream  
State: Victoria  
Country: Australia

Rig Name: Bream A  
Reference Datum: Kelly Bushing  
Elevation: 33.5 m

Drawing Date: 28-Feb-06  
API #:

Production String	(in)		(m)	Well Schematic	(m)	(in)		Casing String
	OD	ID	MD		MD	OD	ID	
					19.0 10.0	13.375 9.681		Casing String Liner Hanger
					796.0	13.375		Casing Shoe



## Operational Summary Listing

MAXIS Field Log

### PERFO2 Operational Summary Listing

Device	Status	Req Depth ( M )	Obs Depth ( M )	Time Used
GUN1	Used	1763.0	1762.9	Mon Feb 27 07:01:50 2006



## Setting Pass

Output DLIS Files

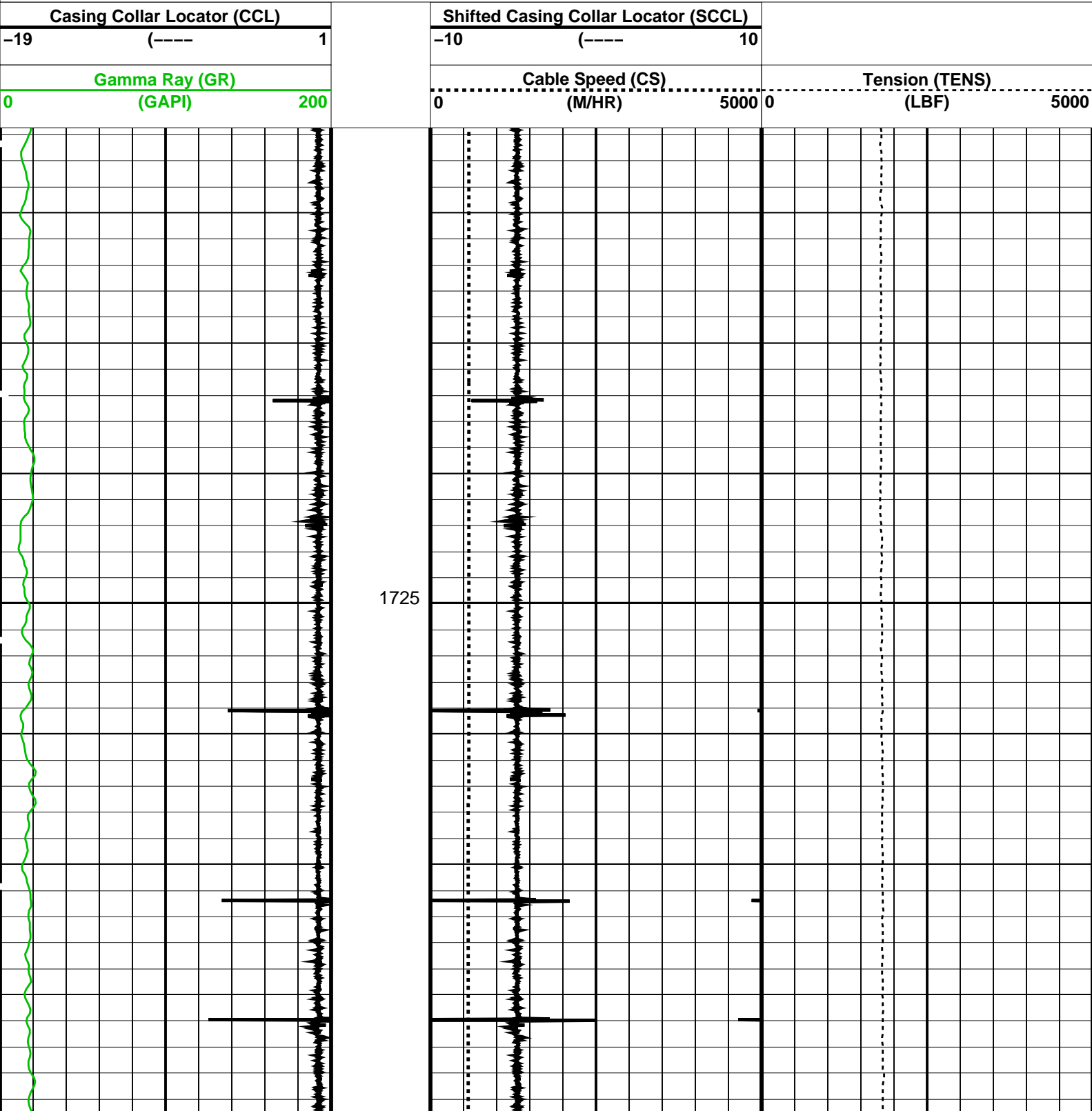
DEFAULT      PERFO\_005LUP      FN:4      PRODUCER      27-Feb-2006 06:26      1801.2 M      1706.7 M

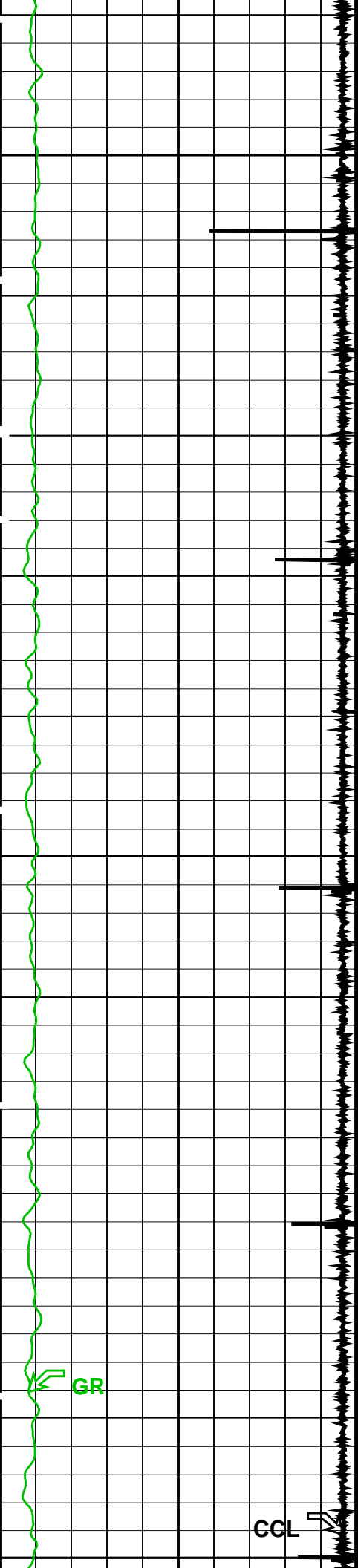
OP System Version: 13C0-300  
MCM

SHM\_GUN      PTC-2789-NUCL      PGGT-D      PTC-2789-NUCL

PIP SUMMARY

Time Mark Every 60 S





1750

1775

1800

CCL to top of plug = 3m  
CCL stop depth = 1760mMDKB  
Plug setting depth = 1763mMDKB

SCCL

TENS

CS

CCL

GR




Gamma Ray (GR) (GAPI)										Cable Speed (CS) (M/HR)										Tension (TENS) (LBF)									
0										0										0									
200										5000										5000									
Casing Collar Locator (CCL)										Shifted Casing Collar Locator (SCCL)																			
-19										-10										10									
(-----)										(-----)																			
1																													

PIP SUMMARY																													
Time Mark Every 60 S																													

Format: PERFO										Vertical Scale: 1:200										Graphics File Created: 27-Feb-2006 06:26									
---------------	--	--	--	--	--	--	--	--	--	-----------------------	--	--	--	--	--	--	--	--	--	------------------------------------------	--	--	--	--	--	--	--	--	--

OP System Version: 13C0-300																													
MCM																													
SHM_GUN										PTC-2789-NUCL										PGGT-D									
																				PTC-2789-NUCL									

Output DLIS Files																													
DEFAULT										PERFO_005LUP										FN:4 PRODUCER 27-Feb-2006 06:26									



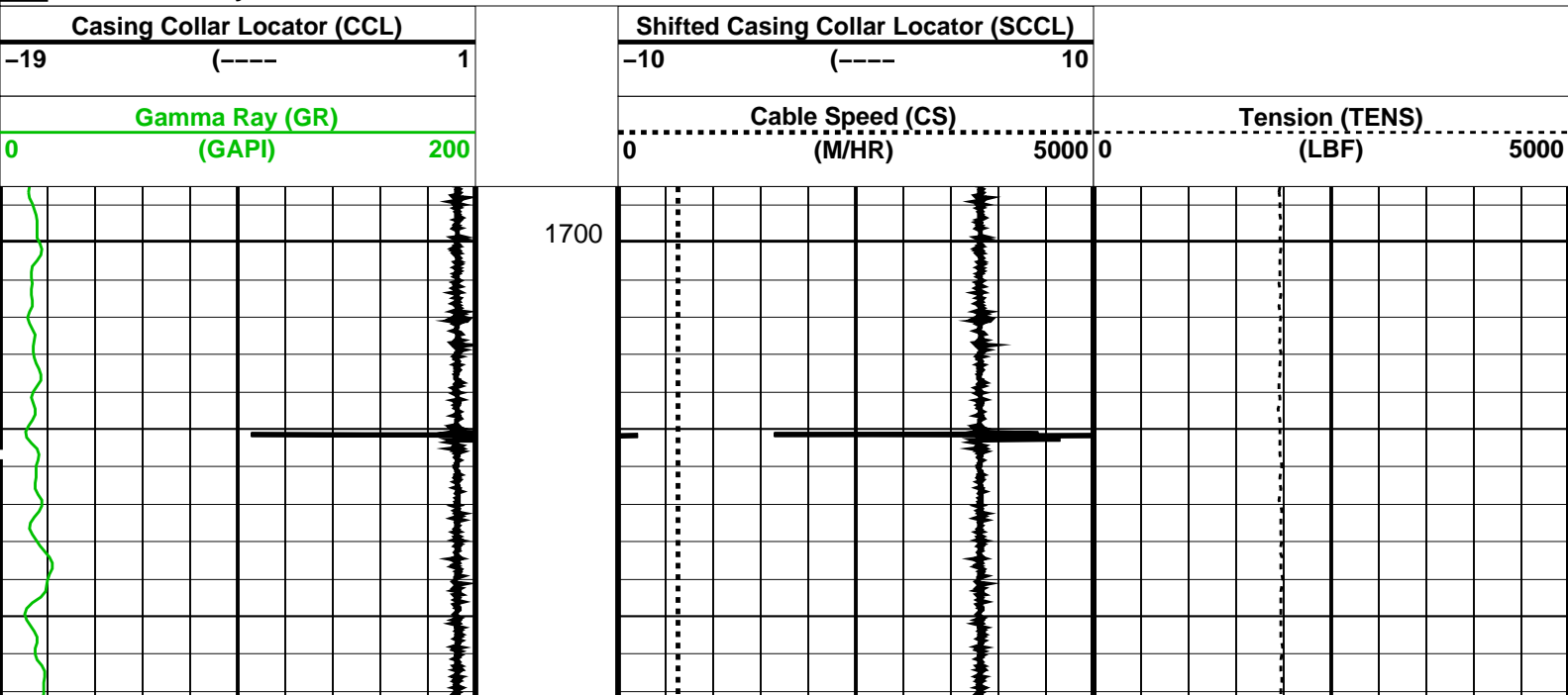
Correlation

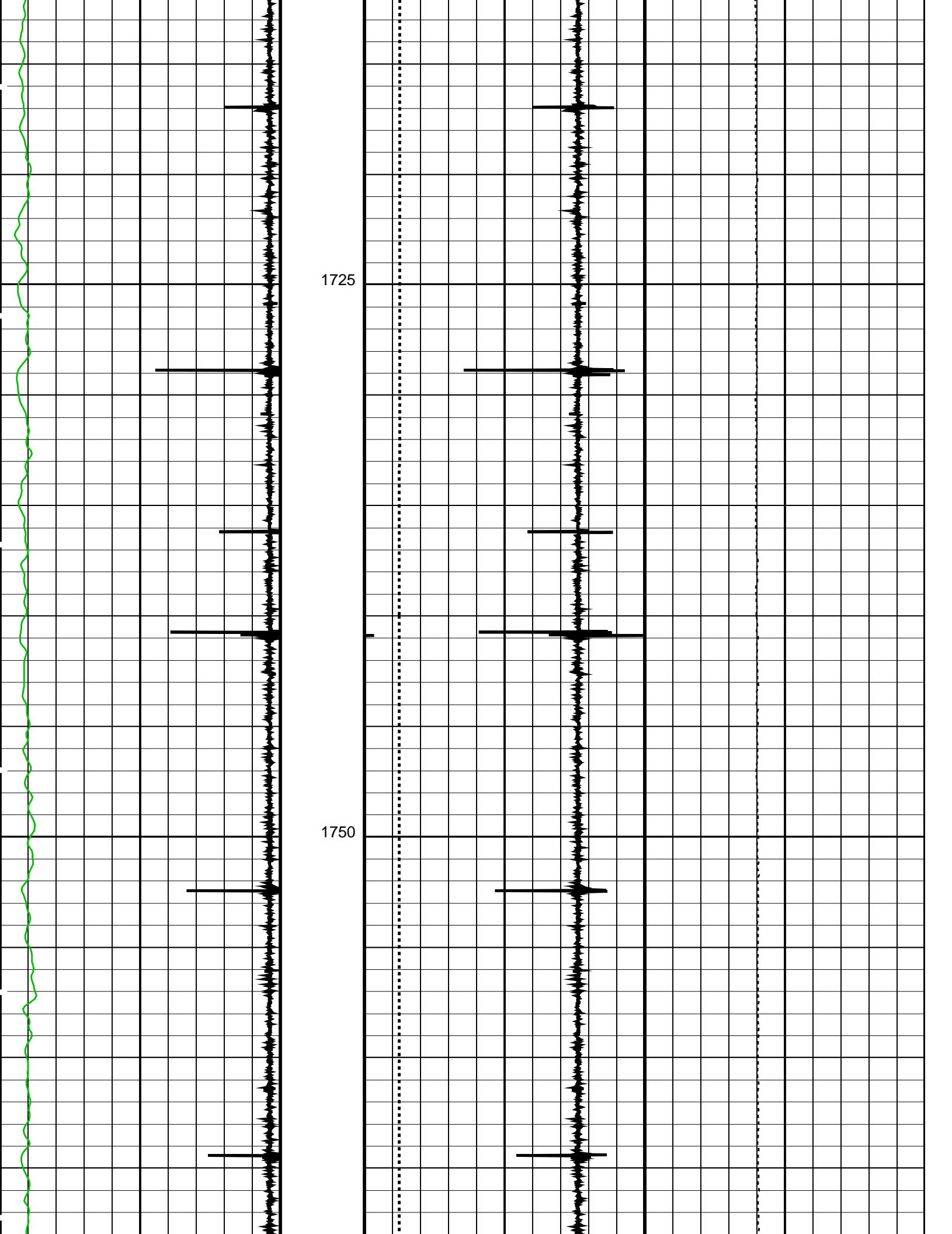
MAXIS Field Log

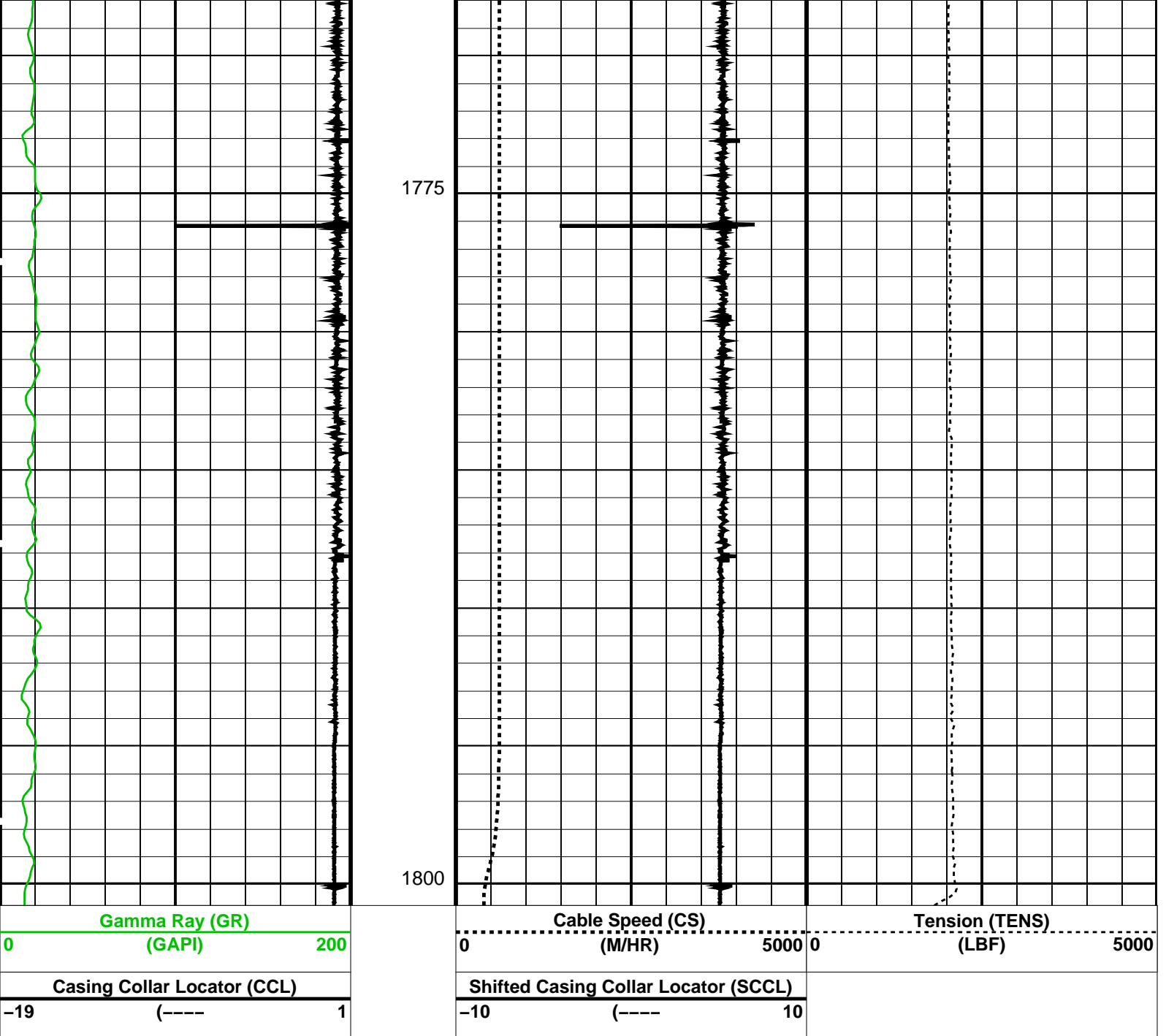
Output DLIS Files																													
DEFAULT										PERFO_004LUP										FN:3 PRODUCER 27-Feb-2006 06:04									

OP System Version: 13C0-300																													
MCM																													
SHM_GUN										PTC-2789-NUCL										PGGT-D									
																				PTC-2789-NUCL									

PIP SUMMARY																													
Time Mark Every 60 S																													







PIP SUMMARY

Time Mark Every 60 S

Format: PERFO Vertical Scale: 1:200

Graphics File Created: 27-Feb-2006 06:04

OP System Version: 13C0-300  
MCM

SHM\_GUN

PTC-2789-NUCL

PGGT-D

PTC-2789-NUCL

Output DLIS Files

DEFAULT

PERFO\_004LUP

FN:3

PRODUCER

27-Feb-2006 06:04

Company: Esso Australia Ltd.

Schlumberger

Well: BMA A-9b

Field: Bream A

Rig: Prod 3 / ISDL 453

Country: Australia

Country: **Australia**

EZSV  
Bridge Plug  
Setting Record