



**Compact**

**GAMMA RAY  
CCL LOG  
1:200 MD**

COMPANY **ESSO AUSTRALIA PTY LTD**

WELL **HAL\_A7**

FIELD **HALIBUT**

PROVINCE/COUNTRY **HALIBUT**

COUNTRY/STATE **BASS STRAIT**

LOCATION **S 38.402636 E 148.321478**

**N 5748683.455486 E 615387.377005**

**FINAL PRINT**

LSD SEC TWP RGE Other Services

API Number  
Permit Number

Permanent Datum , Elevation metres

Log Measured From K.B. above Permanent Datum

Drilling Measured From K.B.

Elevations:  
KB metres  
DF metres  
GL metres

Date 15-JAN-2005

Run Number ONE

Depth Driller

Depth Logger

First Reading

Last Reading

Casing Driller

Casing Logger

Bit Size

Hole Fluid Type

Density / Viscosity

PH / Fluid Loss

Sample Source

Rm @ Measured Temp

Rmf @ Measured Temp

Rmc @ Measured Temp

Source Rmf / Rmc

Rm @ BHT

Time Since Circulation

Max Recorded Temp 110.00 deg C

Equipment Name CML 1

Equipment / Base 1 SALE

Recorded By R. TENCH B. MOSS

Witnessed By BARRIE WHITE

## REMARKS

RIG: HALIBURTON SLICKLINE UNIT (HELILIFT)

COMPACT MEMORY OPERATION.  
CREW: R TENCH , B MOSS.

FINAL LOGS CORRELATED TO SCHLUMBERGER GAMMA LOG.

All interpretations are opinions based on inferences from electrical or other measurements and we cannot, and do not, guarantee the accuracy or correctness of any interpretations, and we shall not, except in the case of gross or wilful negligence on our part, be liable or responsible for any loss, costs, damages or expenses incurred or sustained by anyone resulting from any interpretation made by any of our officers, agents or employees. These interpretations are also subject to our general terms and conditions in our price schedule.

## Main Log 1:200

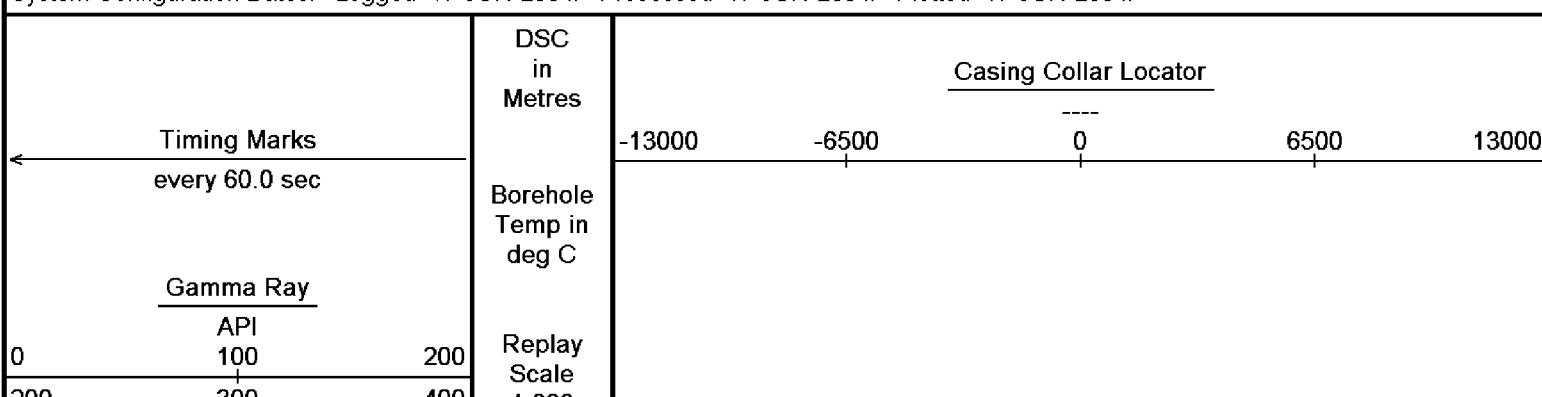
Depth Based Data - Maximum Sampling Increment 10.0cm

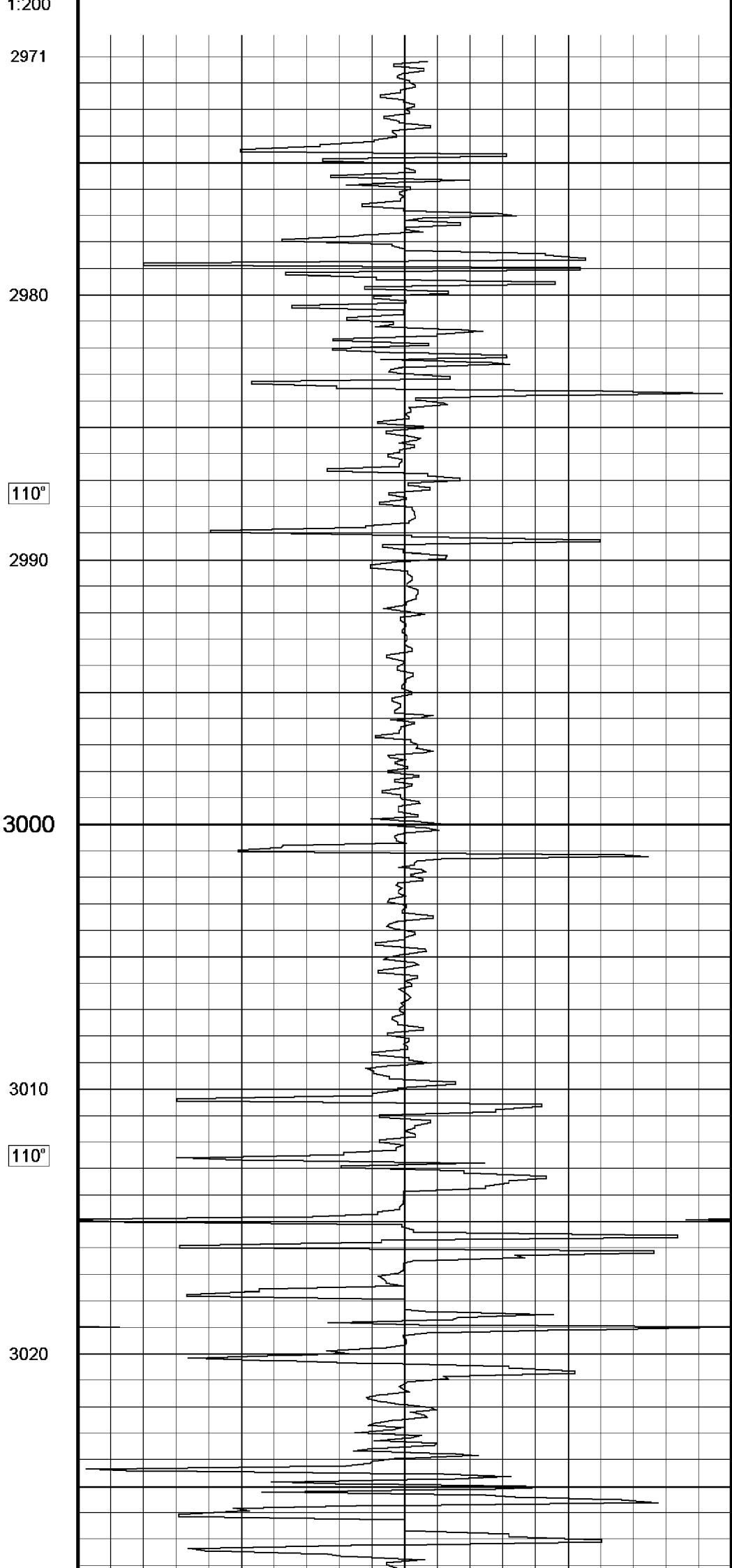
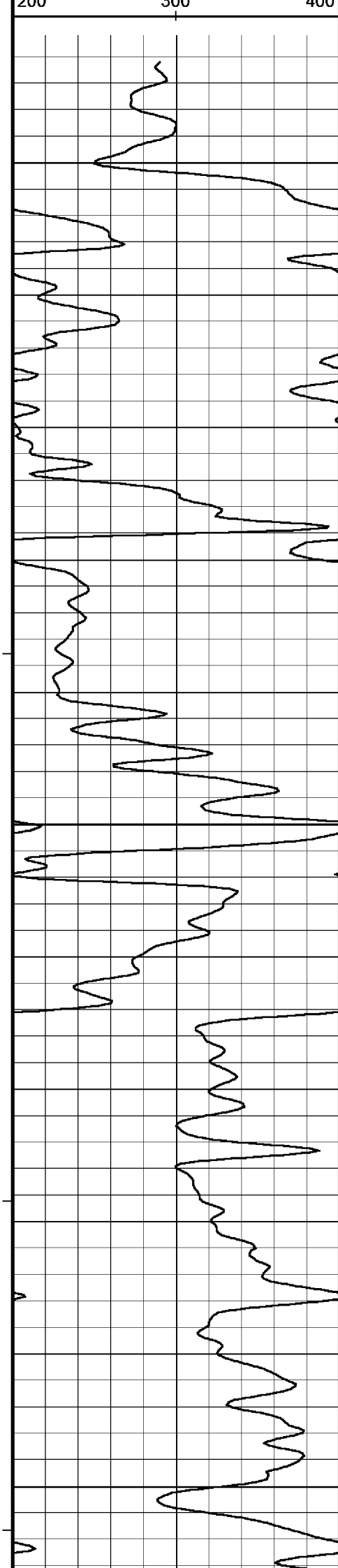
Plotted on 09-FEB-2006 13:23

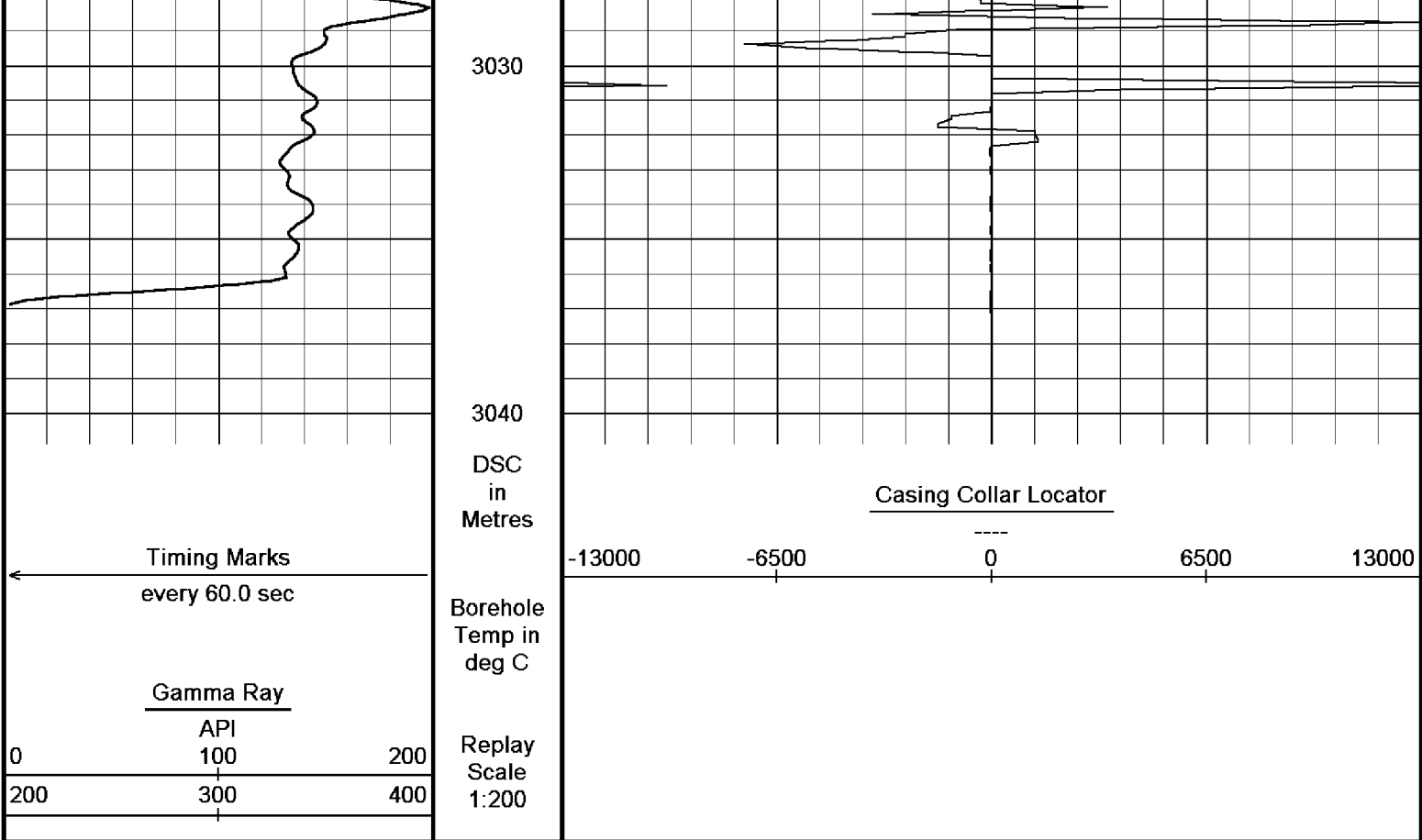
Filename: C:\logs\HAL\_A7\HAL\_A7\_GAMMA\_MAIN\_LOG4.dta

Recorded on 15-JAN-2006 18:37

System Configuration Dates: Logged 17-JUN-2004: Processed 17-JUN-2004: Plotted 17-JUN-2004:







Depth Based Data - Maximum Sampling Increment 10.0cm  
 Filename: C:\logs\HAL\_A7\HAL\_A7\_GAMMA\_MAIN\_LOG4.dta  
 System Configuration Dates: Logged 17-JUN-2004: Processed 17-JUN-2004: Plotted 17-JUN-2004:

Plotted on 09-FEB-2006 13:23  
 Recorded on 15-JAN-2006 18:37

↑ Main Log 1:200 ↑

## DOWNHOLE EQUIPMENT

C:\logs\HAL\_A7\HAL\_A7\_GAMMA\_MAIN\_LOG4.dta

Compact Battery Sub.  
MBS 40 Length: 2.46 m Weight: 44.1 lb

Compact Inline Standoff B  
MIS 141 Length: 0.65 m Weight: 15.4 lb

Compact Gamma  
MCG 142 Length: 2.65 m Weight: 63.9 lb

Compact Memory Sub A.C  
MMS 38 Length: 0.95 m Weight: 22.0 lb

Compact Inline Standoff B  
MIS 138 Length: 0.65 m Weight: 15.4 lb

Induction Standoff  
HFS 4 Length: 0.40 m Weight: 6.6 lb

Total Length: 7.76 m Weight: 167.6 lb



2.03 m GGCE - Borehole Corrected Gamma  
 1.37 m CCLG - Casing Collar Locator  
 1.15 m CGXT - MCG External Temperature

Tool Zero (1.05m from bottom)

All measurements relative to tool zero.

## General Constants All 000

## General Parameters

Mud Resistivity	1.000	ohm-metres
Mud Resistivity Temperature	25.000	degrees C
Water Level	0.000	metres
Density/Neutron Processing	Air Hole	

## Hole/Annular Volume and Differential Caliper Parameters

HVOL Caliper 1	Bit Size	
HVOL Caliper 2	Bit Size	
Annular Volume Diameter	7.000	inches
Caliper for Differential Caliper	None	

## Rwa Parameters

Porosity used	N/A
Resistivity used	N/A
RWA Constant A	N/A
RWA Constant M	N/A

## High Resolution Temperature Calibration MCG 142

Field Calibration on 14-JAN-2006,19:24

	Measured	Calibrated(Deg C)
Lower	0.00	0.00
Upper	100.00	100.00

## High Resolution Temperature Constants MCG 142

Pre-filter Length	11
-------------------	----

## Gamma Calibration MCG 142

Field Calibration on 14-JAN-2006 19:23

	Measured	Calibrated (API)
Background	10	7
Calibrator (Gross)	1353	916
Calibrator (Net)	1342	909

## Gamma Constants MCG 142

Gamma Calibrator Number	060	
Mud Density	1.00	gm/cc
Caliper Source for Processing	Bit Size	
Tool Position	Eccentred	
Concentration of KCl	0.00	kppm

COMPANY

ESSO AUSTRALIA PTY LTD

WELL

HAL\_A7

FIELD

HALIBUT

PROVINCE/COUNTY

HALIBUT

COUNTRY/STATE

BASS STRAIT

Elevation Kelly Bushing

metres

First Reading

metres

Elevation Drill Floor

metres

Depth Driller

metres

Elevation Ground Level

metres

Depth Logger

metres



Compact

GAMMA RAY

CCL LOG

1:200 MD