



**Compact**

**GAMMA RAY**

**CCL LOG**

**1:200 MD**

COMPANY **ESSO AUSTRALIA PTY LTD**

WELL **HAL\_A17**

FIELD **HALIBUT**

PROVINCE/COUNTRY **HALIBUT**

COUNTRY/STATE **BASS STRAIT**

LOCATION **S 38.402618 E 148.321359**

**N 5748685.675482 E 615377.047001** **[FINAL PRINT]**

LSD SEC TWP RGE Other Services

API Number

Permit Number

Permanent Datum , Elevation metres

Log Measured From K.B. above Permanent Datum

Drilling Measured From K.B.

Elevations:  
KB metres  
DF metres  
GL metres

Date 17-JAN-2005

Run Number ONE

Depth Driller

Depth Logger

First Reading

Last Reading

Casing Driller

Casing Logger

Bit Size

Hole Fluid Type

Density / Viscosity

PH / Fluid Loss

Sample Source

Rm @ Measured Temp

Rmf @ Measured Temp

Rmc @ Measured Temp

Source Rmf / Rmc

Rm @ BHT

Time Since Circulation

Max Recorded Temp 110.00 deg C

Equipment Name

Equipment / Base 1 SALE

Recorded By R.TENCH B.MOSS

Witnessed By BARRIE WHITE

## REMARKS

RIG: HALIBURTON SLICKLINE UNIT (HELILIFT)

COMPACT MEMORY OPERATION.  
CREW: R TENCH , B MOSS.

LOGGING SPEED 10METRES/MIN.

FINAL LOGS CORRELATED TO SCHLUMBERGER GAMMA LOG.

All interpretations are opinions based on inferences from electrical or other measurements and we cannot, and do not, guarantee the accuracy or correctness of any interpretations, and we shall not, except in the case of gross or wilful negligence on our part, be liable or responsible for any loss, costs, damages or expenses incurred or sustained by anyone resulting from any interpretation made by any of our officers, agents or employees. These interpretations are also subject to our general terms and conditions in our price schedule.

## MAIN LOG 1:200

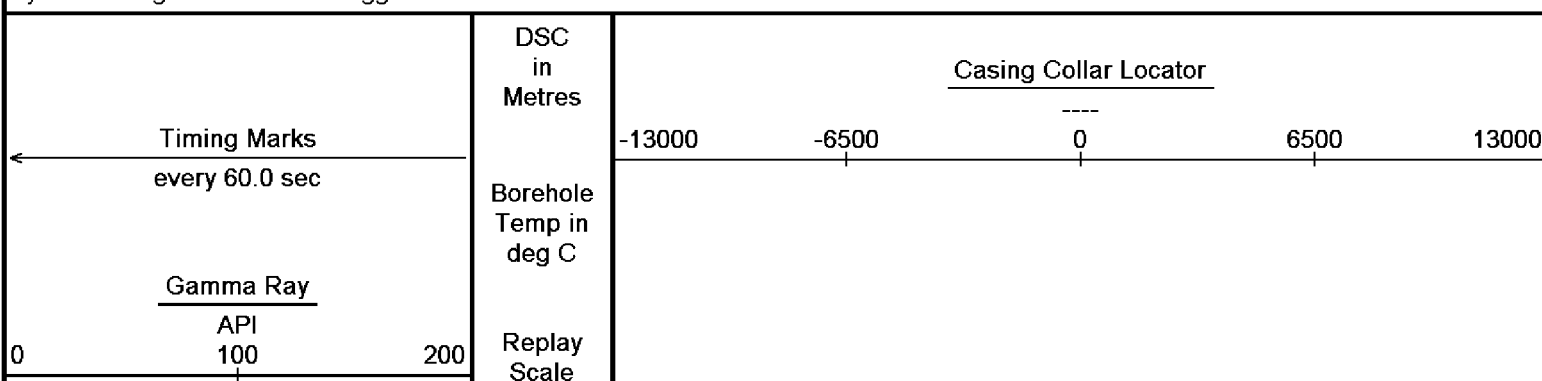
Depth Based Data - Maximum Sampling Increment 10.0cm

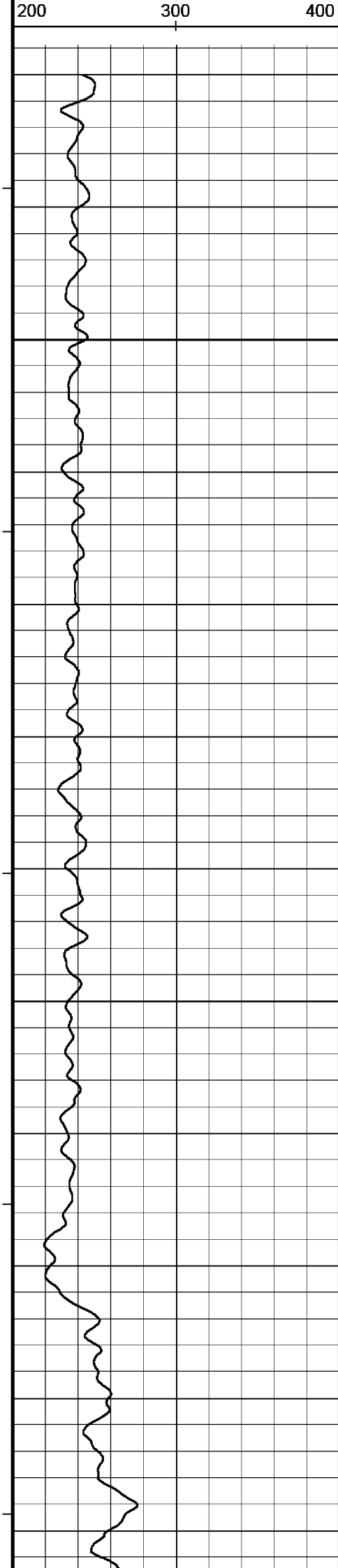
Plotted on 08-FEB-2006 10:12

Filename: C:\logs\HAL\_A17\HAL\_A17\_GAMMA\_CCL\_MAIN\_LOG.dta

Recorded on 17-JAN-2006 14:37

System Configuration Dates: Logged 17-JUN-2004: Processed 17-JUN-2004: Plotted 17-JUN-2004:





1:200

2365

2370

2380

105°

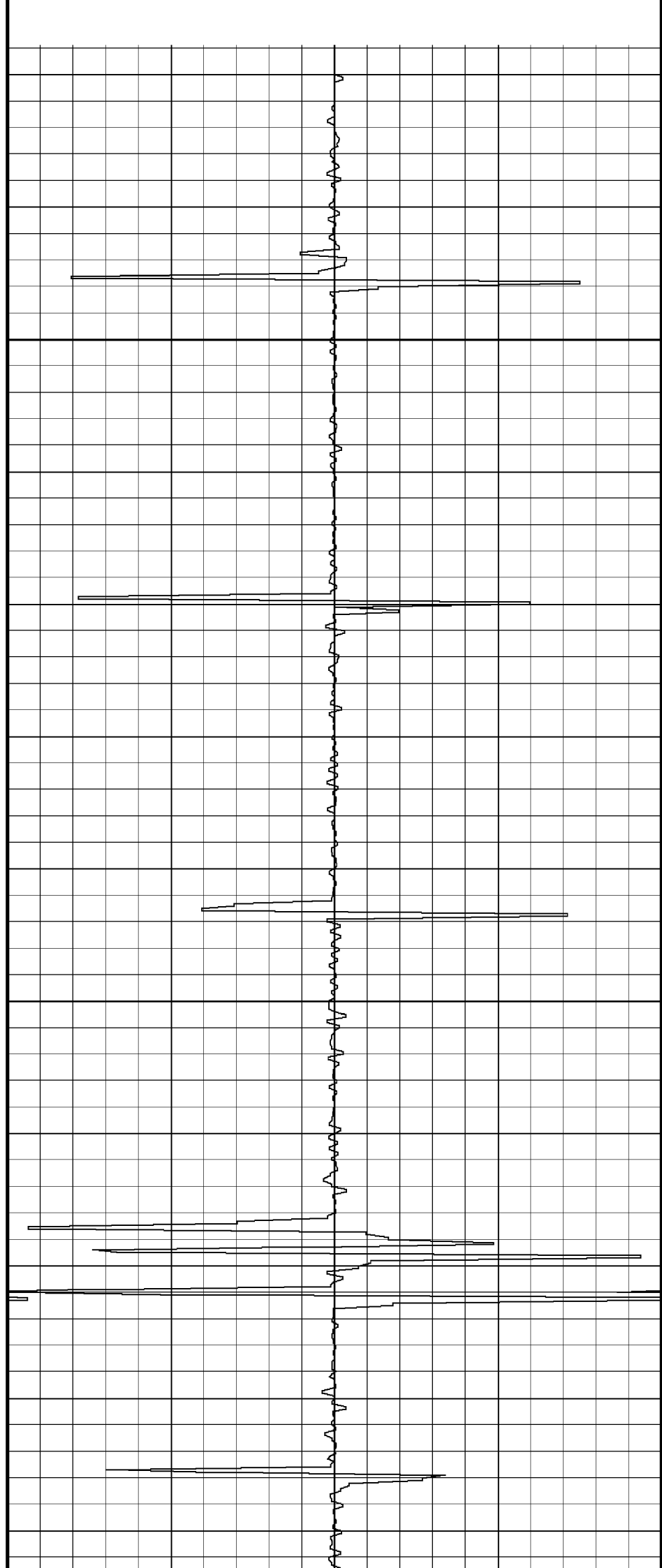
2390

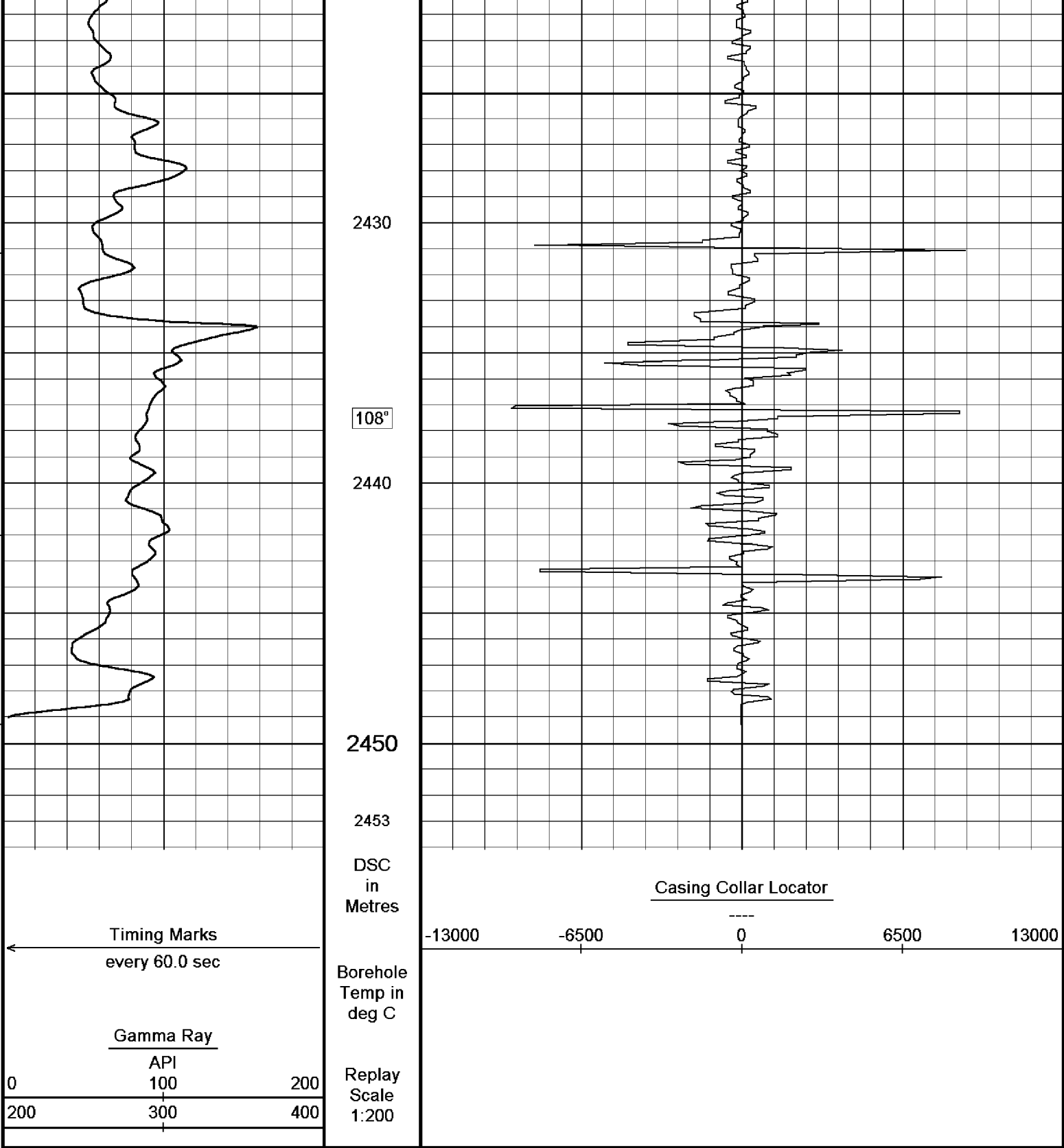
2400

2410

106°

2420





Depth Based Data - Maximum Sampling Increment 10.0cm  
Filename: C:\logs\HAL\_A17\HAL\_A17\_GAMMA\_CCL\_MAIN\_LOG.dta  
System Configuration Dates: Logged 17-JUN-2004: Processed 17-JUN-2004: Plotted 17-JUN-2004:

MAIN LOG 1:200

### BEFORE SURVEY CALIBRATION

C:\logs\HAL\_A17\HAL\_A17\_GAMMA\_CCL.dta

General Constants All 000		
General Parameters		
Mud Resistivity	1.000	ohm-metres
Mud Resistivity Temperature	25.000	degrees C
Water Level	0.000	metres
Density/Neutron Processing	Air Hole	

Hole/Annular Volume and Differential Caliper Parameters	Bit Size	
HVOL Caliper 1	Bit Size	
HVOL Caliper 2	7.000	inches
Annular Volume Diameter	None	
Caliper for Differential Caliper		

Rwa Parameters	
Porosity used	N/A
Resistivity used	N/A
RWA Constant A	N/A
RWA Constant M	N/A

#### Gamma Calibration MCG 142

Field Calibration on 14-JAN-2006 19:23

	Measured	Calibrated (API)
Background	10	7
Calibrator (Gross)	1353	916
Calibrator (Net)	1342	909

#### Gamma Constants MCG 142

Gamma Calibrator Number	060	
Mud Density	1.00	gm/cc
Caliper Source for Processing	Bit Size	
Tool Position	Centred	
Concentration of KCl	0.00	kppm

#### High Resolution Temperature Calibration MCG 142

Field Calibration on 14-JAN-2006,19:24

	Measured	Calibrated(Deg C)
Lower	0.00	0.00
Upper	100.00	100.00

#### High Resolution Temperature Constants MCG 142

Pre-filter Length	11
-------------------	----

### DOWNHOLE EQUIPMENT

C:\logs\HAL\_A17\HAL\_A17\_GAMMA\_CCL.dta

Compact Battery Sub.  
MBS 40 Length: 2.46 m Weight: 44.1 lb

Compact Inline Standoff B  
MIS 136 Length: 0.65 m Weight: 15.4 lb

Compact Gamma  
MCG 142 Length: 2.65 m Weight: 63.9 lb

Compact Memory Sub A.C  
MMS 38 Length: 0.95 m Weight: 30.9 lb

Compact Inline Standoff B  
MIS 138 Length: 0.65 m Weight: 15.4 lb

Pressure Bung + Hole Finder  
HFS 4 Length: 0.40 m Weight: 6.6 lb

Total Length: 7.76 m Weight: 176.4 lb




2.03 m GRGC - Gamma Ray  
1.37 m CCLG - Casing Collar Locator  
1.15 m CGXT - MCG External Temperature

Tool Zero (1.05m from bottom)

All measurements relative to tool zero.

COMPANY  
WELL

ESSO AUSTRALIA PTY LTD  
HAL\_A17

FIELD		HALIBUT	
PROVINCE/COUNTY		HALIBUT	
COUNTRY/STATE		BASS STRAIT	
Elevation Kelly Bushing	metres	First Reading	metres
Elevation Drill Floor	metres	Depth Driller	metres
Elevation Ground Level	metres	Depth Logger	metres
 <b>Compact</b>		GAMMA RAY CCL LOG 1:200 MD	