



Company: Esso Australia Ltd.

Well: A-27a  
Field: Bream A  
Rig: ISDL 453 / Prod 3  
Country: Australia

2 7/8" PURE-HSD PowerJet Omega  
PGGT-GR-CCI  
Perforating Record

Rig: ISDL 453 / Prod 3

Field: Bream A

Location: Gippsland

Well: A-27a

Company: Esso Australia Ltd.

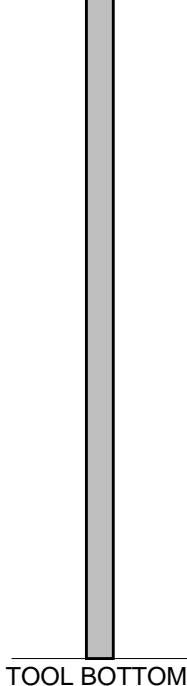
LOCATION		Elev.:	K.B.	33.5 m
Gippsland			G.L.	-59.4 m
Basin			D.F.	33.5 m
Bass Strait				
Permanent Datum:	Mean Sea Level	Elev.: 0 m		
Log Measured From:	Kelly Bushing	33.5 m above Perm. Datum		
Drilling Measured From:	Kelly Bushing			
State: Victoria	Max. Well Deviation 63 deg	Longitude 147° 46' 15" E	Latitude 38° 30' 4" S	

Logging Date					18-Jan-2006				
Run Number					1				
Depth Driller					3534 m				
Schlumberger Depth					3532.5 m				
Bottom Log Interval					3484 m				
Top Log Interval					3480 m				
Casing Fluid Type					Brine				
Salinity									
Density									
Fluid Level									
BIT/CASING/TUBING STRING									
Bit Size					8.500 in				
From									
To									
Casing/Tubing Size					7.000 in				
Weight					26 lbm/ft				
Grade					N-80				
From									
To									
Maximum Recorded Temperatures									
Logger On Bottom					18-Jan-2006 0700				
Unit Number					41 VEA				
Recorded By					Joel Hogan, Owen Darby, Omar Tahmiscic				
Witnessed By					Ross Morris, Bim Steele				

					Run 1	Run 2	Run 3
PVT DATA	Oil Density						
	Water Salinity						
	Gas Gravity						
	Bo						
	Bw						
	1/Bg						
	Bubble Point Pressure						
	Bubble Point Temperature						
	Solution GOR						
	Maximum Deviation	63 deg					
CEMENTING DATA							
Primary/Squeeze	Primary						
Casing String No							
Lead Cement Type							
Volume							
Density							
Water Loss							
Additives							
Expected Cement Top							
Logging Date							
Run Number							
Depth Driller							
Schlumberger Depth							
Bottom Log Interval							
Top Log Interval							
Casing Fluid Type							
Salinity							
Density							
Fluid Level							
BIT/CASING/TUBING STRING							
Bit Size							
From							
To							
Casing/Tubing Size							
Weight							
Grade							
From							
To							
Maximum Recorded Temperatures							
Logger On Bottom		Time					
Unit Number	Location						
Recorded By							
Witnessed By							

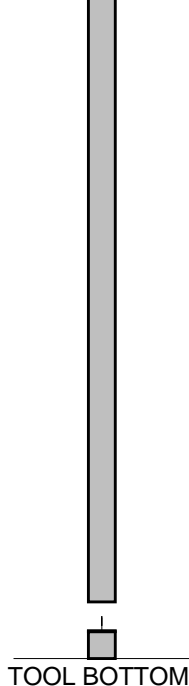


6 SPF, 60deg Phasing					
Penetration: 36"					
Entrance Hole: 0.34"					
CCL to top shot = 6.14m					
CCL stop depth = 3473.84m MDKB					
Gun shot at 3480m MDKB					
Crew: John Light, Kevin Kerr (Days)					
Darren Watts, Gary Martin (Nights)					
RUN 1			RUN 2		
SERVICE ORDER #:		AUSL06165319	SERVICE ORDER #:		
PROGRAM VERSION:		13C0-300	PROGRAM VERSION:		
FLUID LEVEL:			FLUID LEVEL:		
LOGGED INTERVAL	START	STOP	LOGGED INTERVAL	START	STOP
EQUIPMENT DESCRIPTION					
RUN 1			RUN 2		
SURFACE EQUIPMENT			SURFACE EQUIPMENT		
SHM-EA			WITM (SHM) 969		
DOWNHOLE EQUIPMENT			DOWNHOLE EQUIPMENT		
MH-22		8.94	MH-22		16.49
MH-22			MH-22		
PGGT-C		8.46	PGGT-C		16.01
PGGC 263			PGGC 263		
PGGH-A 263			PGGH-A 263		
	Gamma Ray	0.48		Gamma Ray	0.48
	Casing Co Tension	TOOL ZERO		Casing Co Tension	TOOL ZERO
AH-122		6.51	AH-122		14.05
AH-SAFE Adaptor		6.38	AH-WPSA-BA		13.92
			AH-WPSA-BA 1		
SAFE		6.22	SAFE		13.36
SHM_GUN		6.22	AH-Esic Housing		13.36
GUN			AH-Esic Housing		
			AH-SAFE Bulkhead		12.90
			SHM_GUN		12.75
			GUN		



MAXIMUM STRING DIAMETER 2.88 IN  
MEASUREMENTS RELATIVE TO TOOL ZERO  
ALL LENGTHS IN METERS

AH-Roller Bottom Nose



MAXIMUM STRING DIAMETER 2.88 IN  
MEASUREMENTS RELATIVE TO TOOL ZERO  
ALL LENGTHS IN METERS

Client: Esso Australia Ltd.

Well: A-27a

Field: Bream A

State: Victoria

Country: Australia

Rig Name: 453

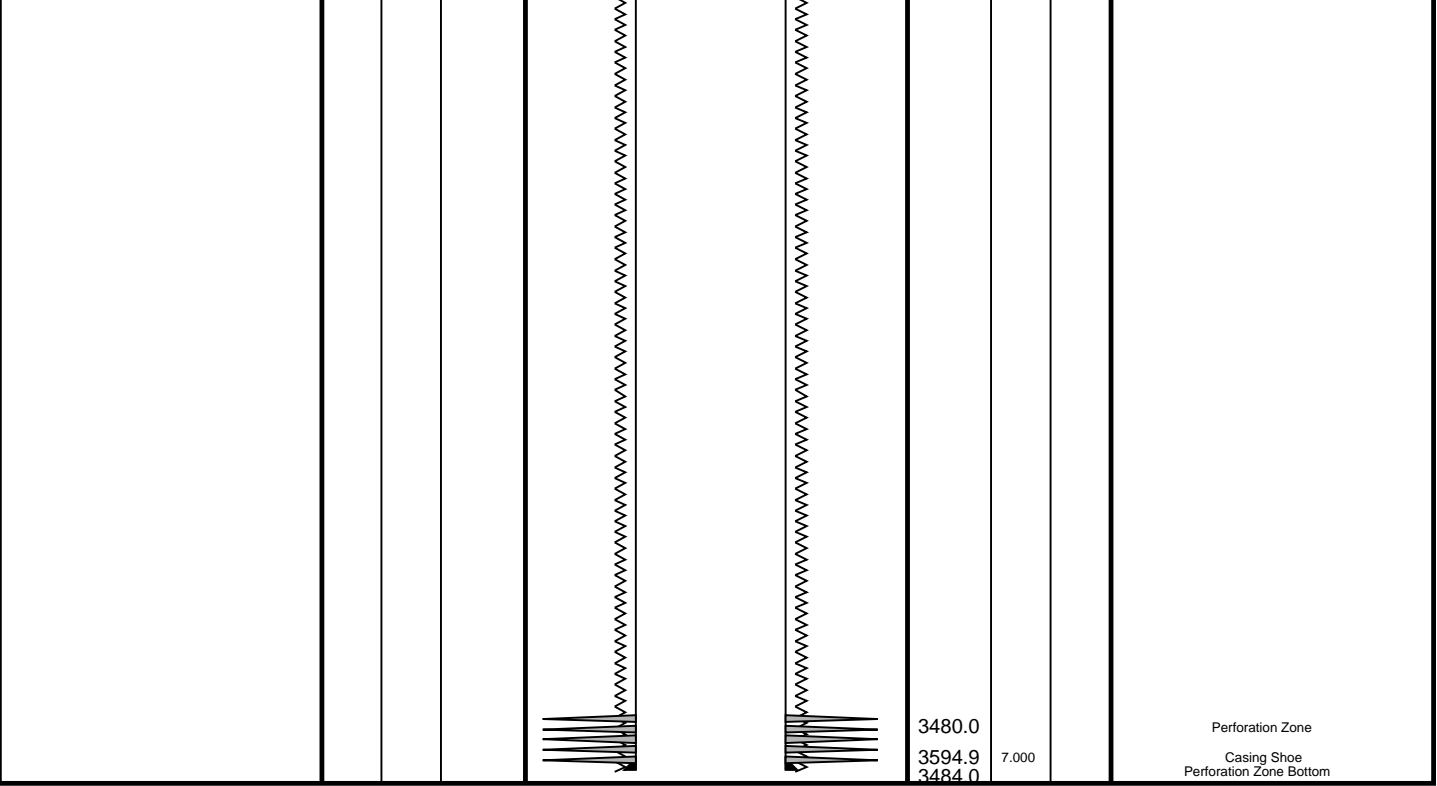
Reference Datum: Mean Sea Level

Elevation: 33.5 m

Drawing Date: 1/23/2006

API #:

Production String	(in)		(m)	Well Schematic	(m)	(in)		Casing String
	OD	ID	MD		MD	OD	ID	
					12.9 12.9	10.750 10.750	7.000	Borehole Segment Liner Hanger Casing String
					1345.2 1345.2	10.750 8.500		Casing Shoe Borehole Segment



Perforation Pass

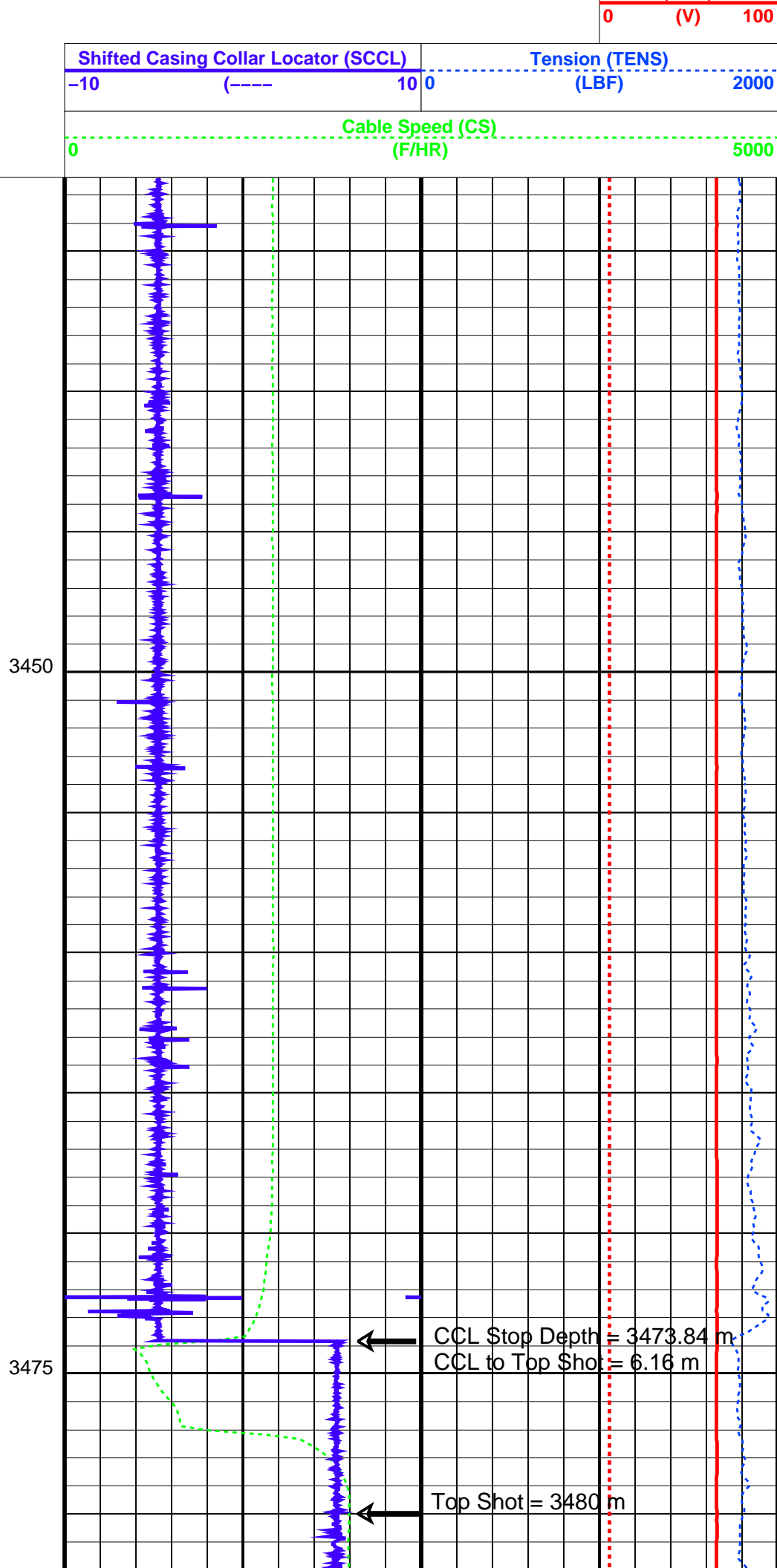
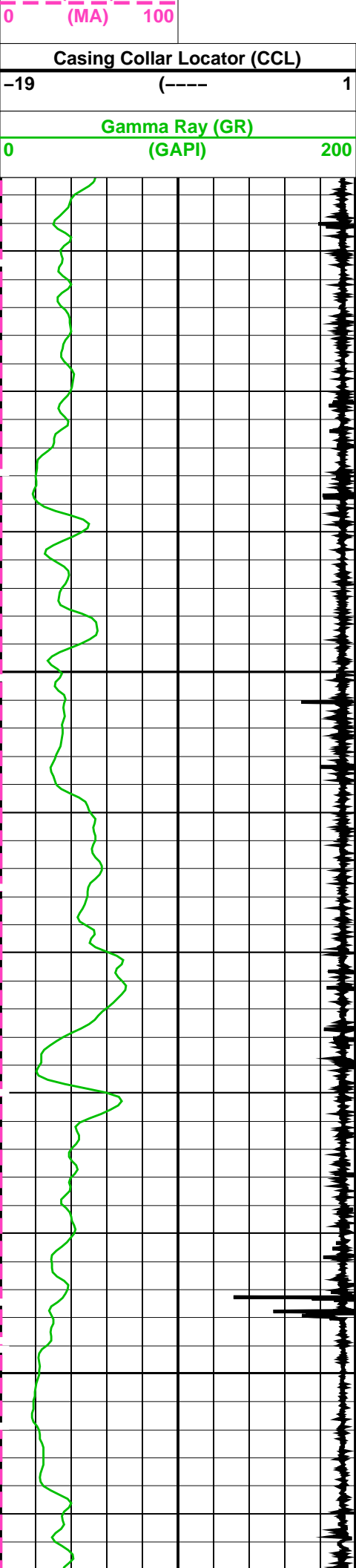
MAXIS Field Log

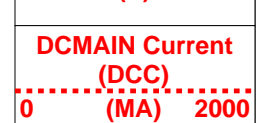
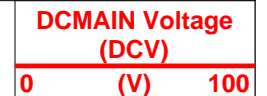
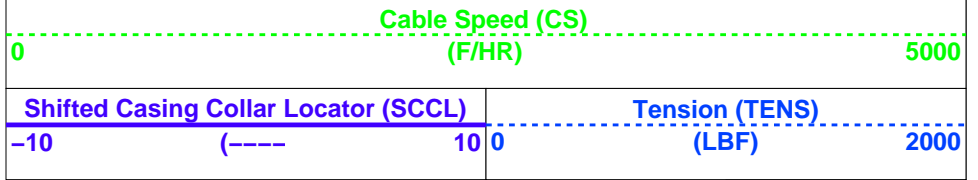
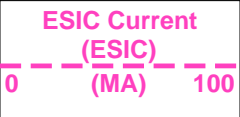
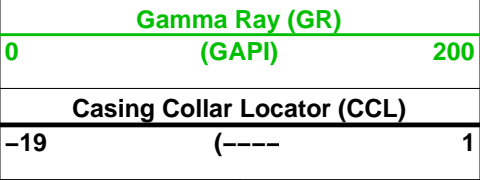
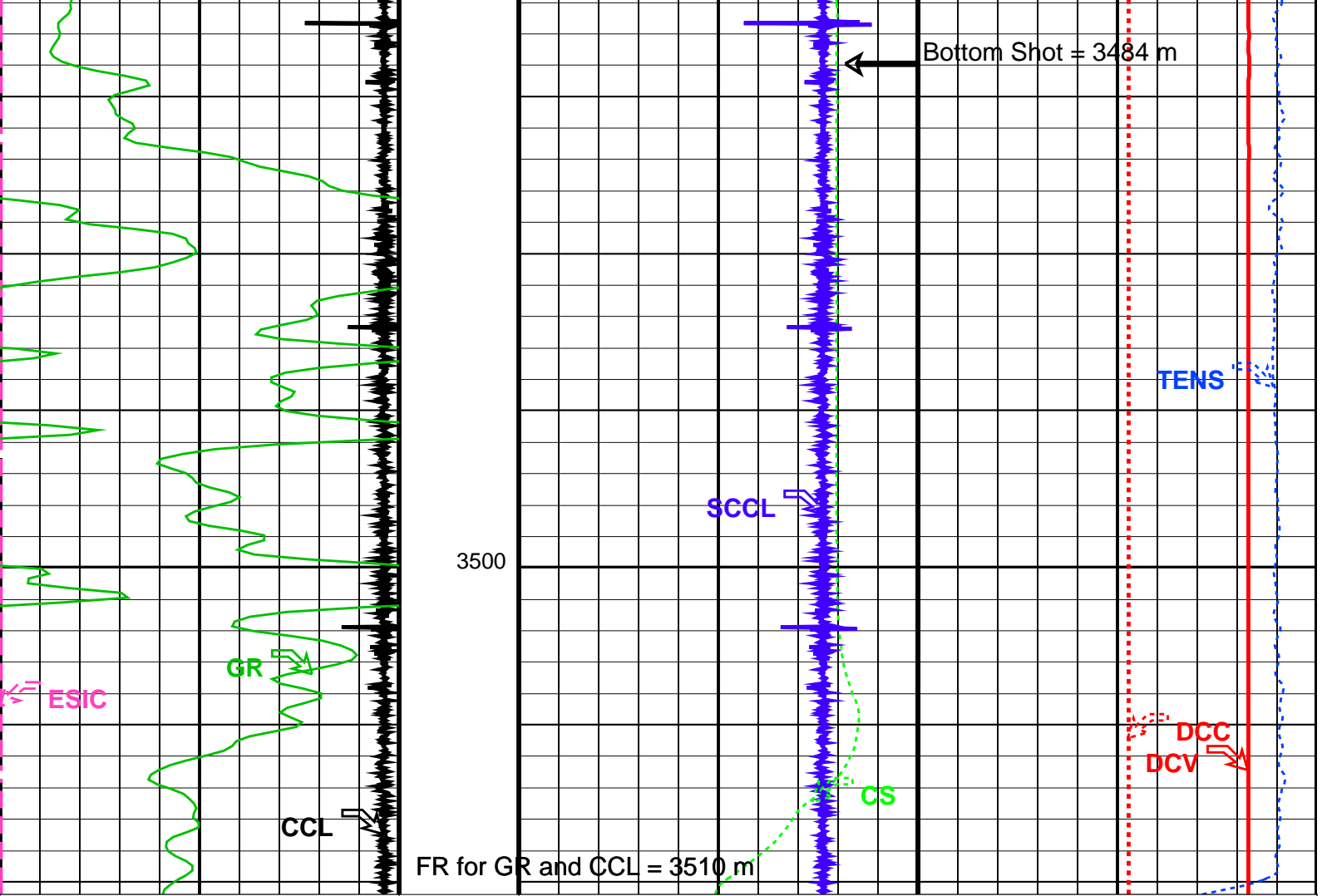
Output DLIS Files					
DEFAULT	PERFO_011LUP	FN:10	PRODUCER	18-Jan-2006 11:34	3510.4 M 3432.2 M

OP System Version: 13C0-300				
MCM				
SHM_GUN	PTC-2789-NUCL	SAFE	PTC-2789-NUCL	
PGGT-C	PTC-2789-NUCL			

PIP SUMMARY					
Time Mark Every 60 S					

ESIC Current (ESIC)	DCMAIN Current (DCC) ----- 0 (MA) 2000				
	DCMAIN Voltage (DCV)				





#### PIP SUMMARY

Time Mark Every 60 S

#### Parameters

DLIS Name	Description	Value
SAFE: SAFE DETONATING SYSTEM ESDT	ESIC Shot Depth Temperature	-17.7778 DEGC

Format: PERFO Vertical Scale: 1:200

Graphics File Created: 18-Jan-2006 11:34

#### OP System Version: 13C0-300

MCM

SHM_GUN PGGT-C	PTC-2789-NUCL PTC-2789-NUCL	SAFE	PTC-2789-NUCL
-------------------	--------------------------------	------	---------------

#### Output DLIS Files

DEFAULT	PERFO_011LUP	FN:10	PRODUCER	18-Jan-2006 11:34
---------	--------------	-------	----------	-------------------



Output DLIS Files

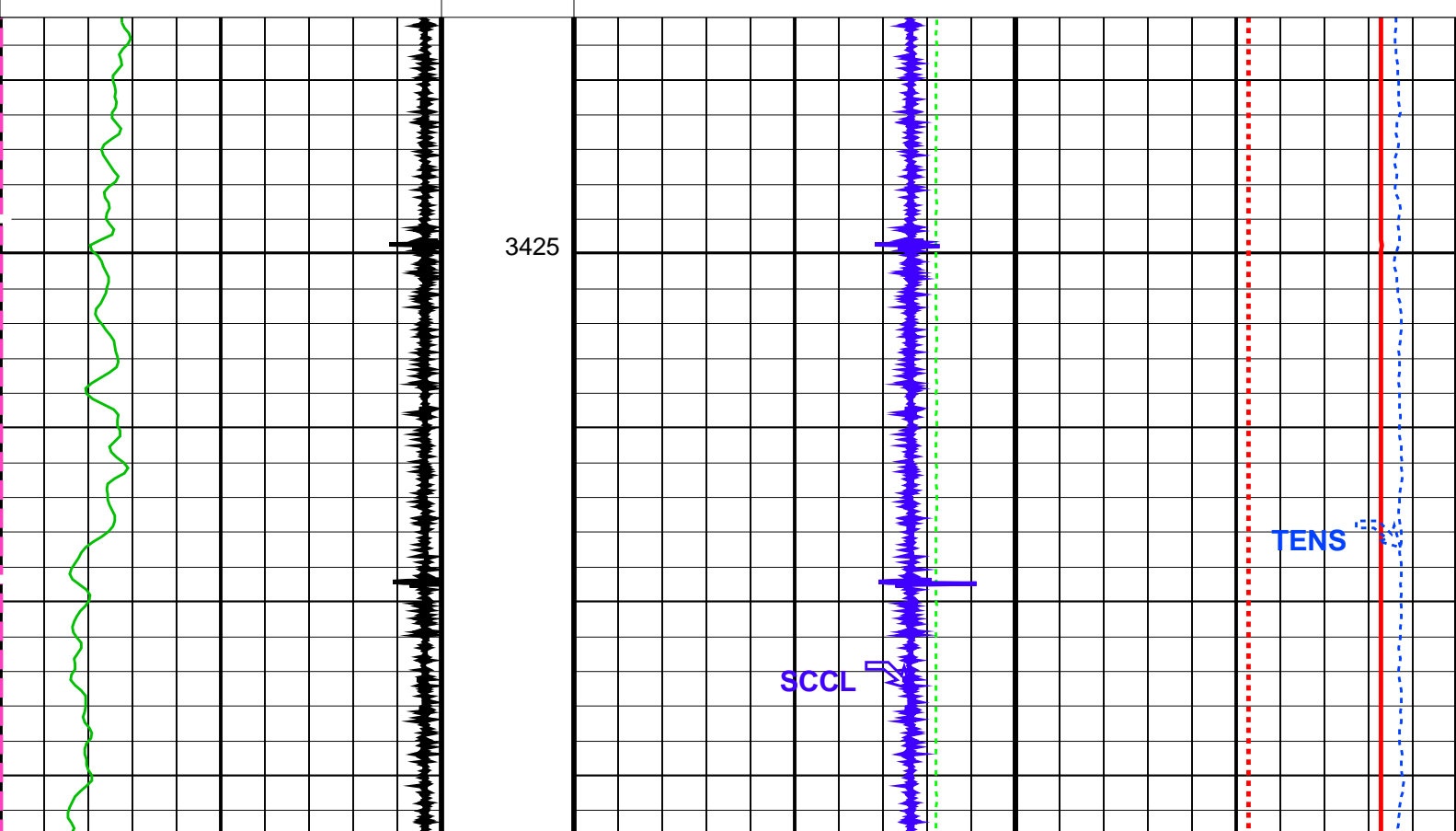
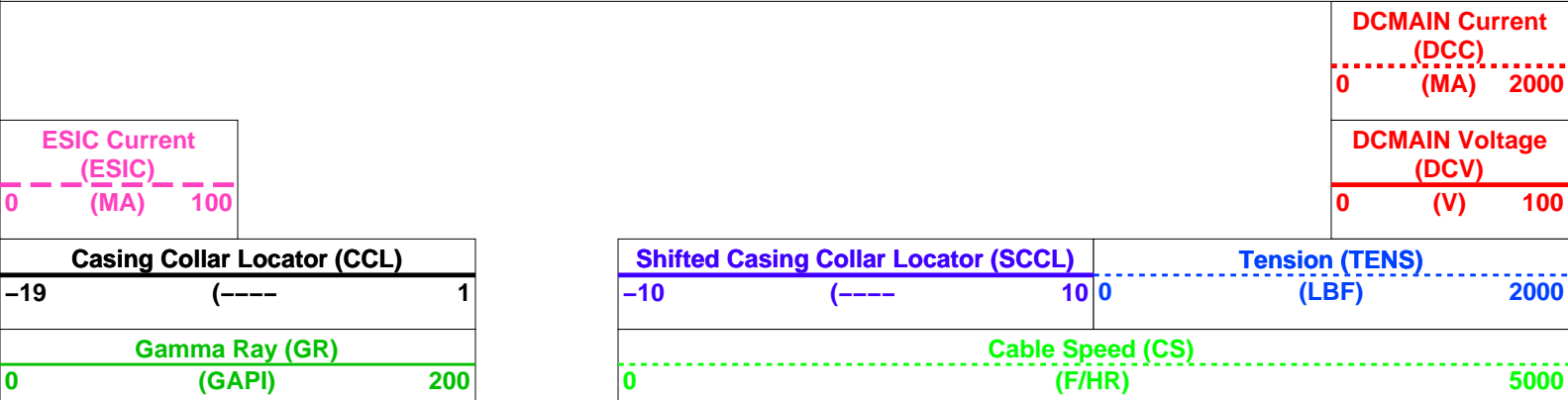
DEFAULT      PERFO\_010LUP      FN:9      PRODUCER      18-Jan-2006 11:20      3510.5 M      3418.2 M

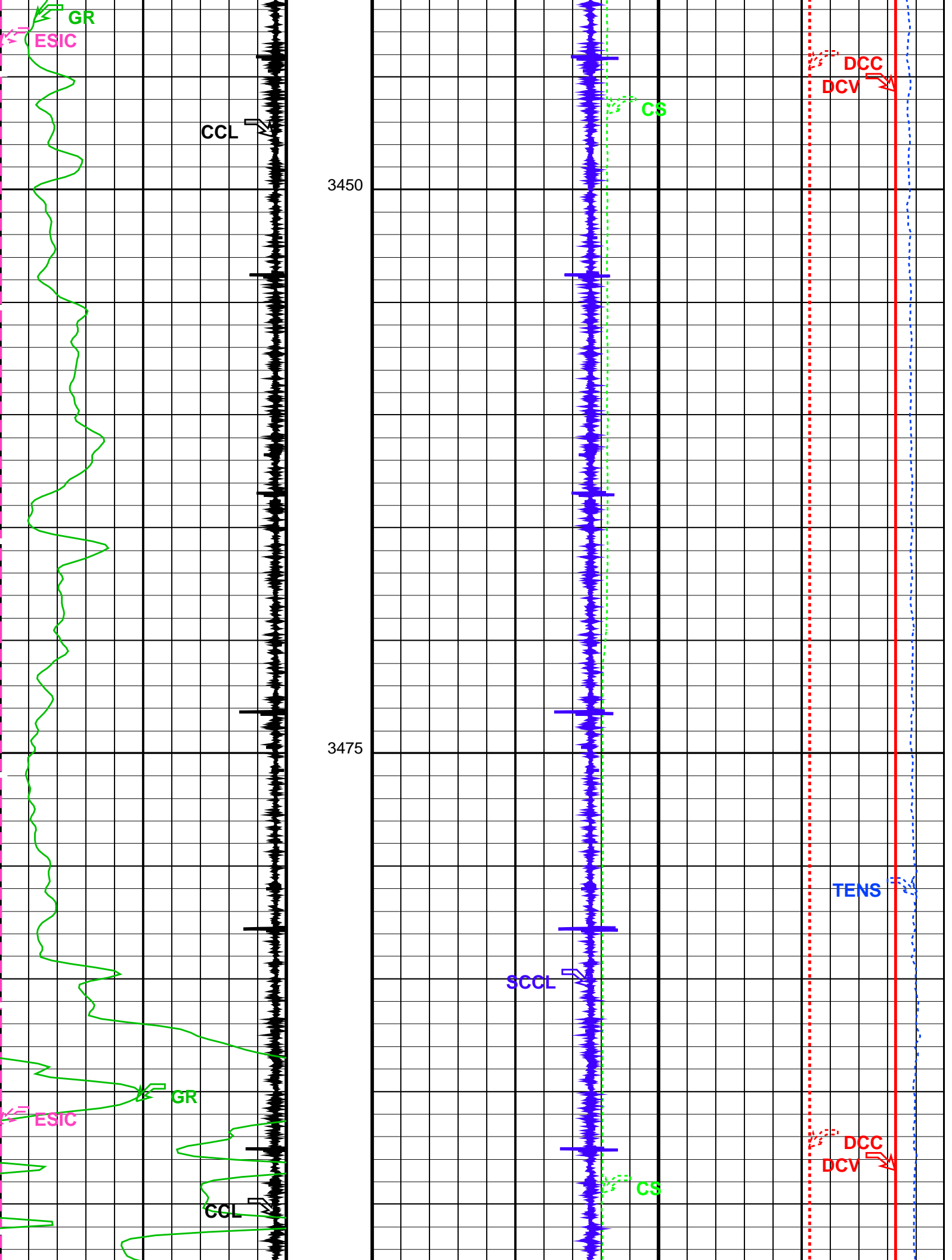
OP System Version: 13C0-300  
MCM

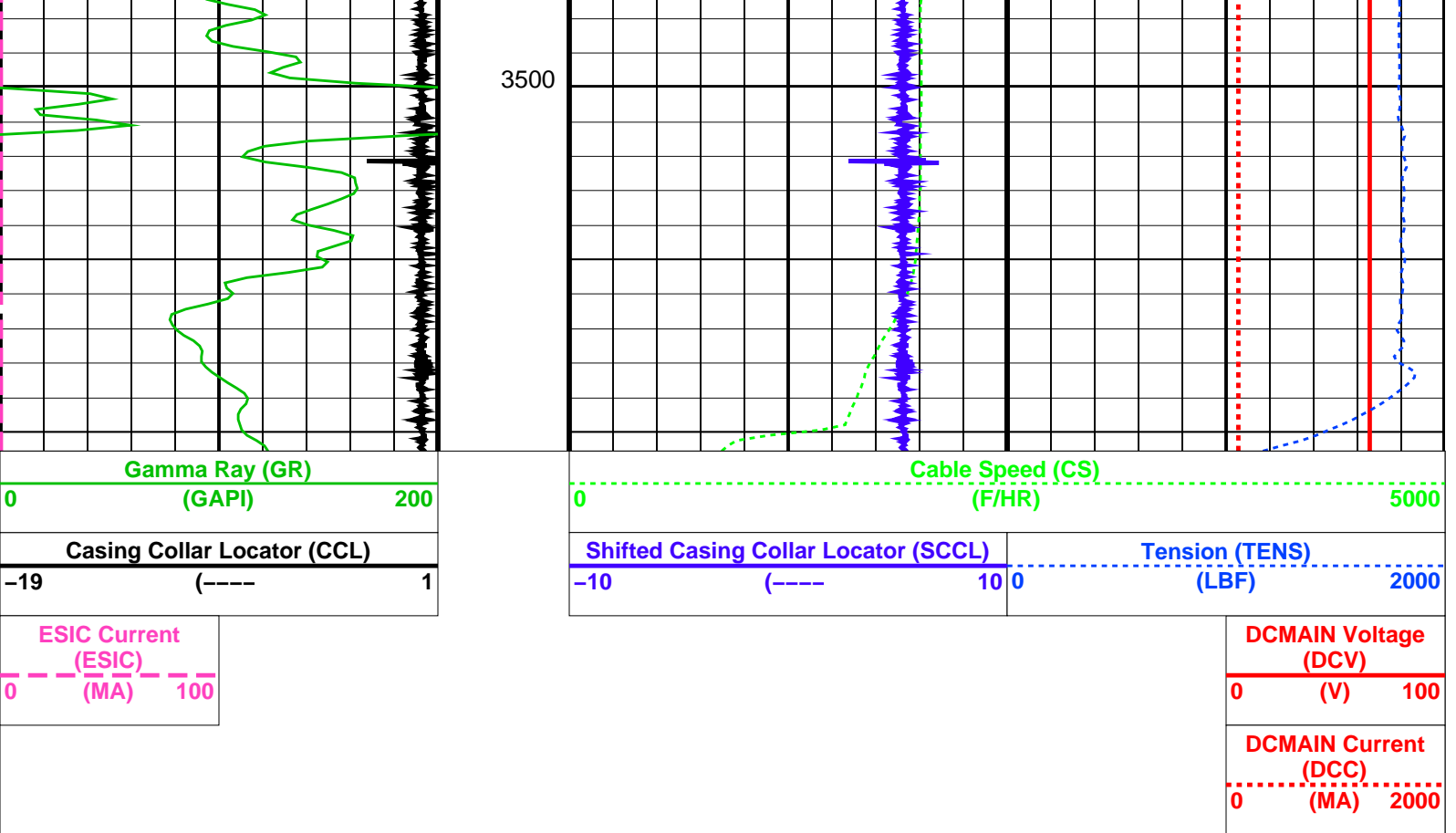
SHM\_GUN      PTC-2789-NUCL      SAFE      PTC-2789-NUCL  
PGGT-C      PTC-2789-NUCL

PIP SUMMARY

Time Mark Every 60 S







#### PIP SUMMARY

Time Mark Every 60 S

#### Parameters

DLIS Name	Description	Value
SAFE: SAFE DETONATING SYSTEM		
ESDT	ESIC Shot Depth Temperature	-17.778 DEGC

Format: PERFO Vertical Scale: 1:200 Graphics File Created: 18-Jan-2006 11:20

#### OP System Version: 13C0-300

MCM

SHM_GUN	PTC-2789-NUCL	SAFE	PTC-2789-NUCL
PGGT-C	PTC-2789-NUCL		

#### Output DLIS Files

DEFAULT	PERFO_010LUP	FN:9	PRODUCER	18-Jan-2006 11:20
---------	--------------	------	----------	-------------------

Schlumberger

Dummy Gun

MAXIS Field Log

#### Input DLIS Files

DEFAULT	PERFO_005PUP	FN:4	PRODUCER	18-Jan-2006 07:26	3555.6 M	3420.9 M
---------	--------------	------	----------	-------------------	----------	----------

Output DLIS Files

DEFAULT      PERFO\_006PUP      FN:5      PRODUCER      18-Jan-2006 07:33      3555.5 M      3421.2 M

OP System Version: 13C0-300  
MCM

SHM\_GUN      PTC-2789-NUCL      PGGT-C      PTC-2789-NUCL

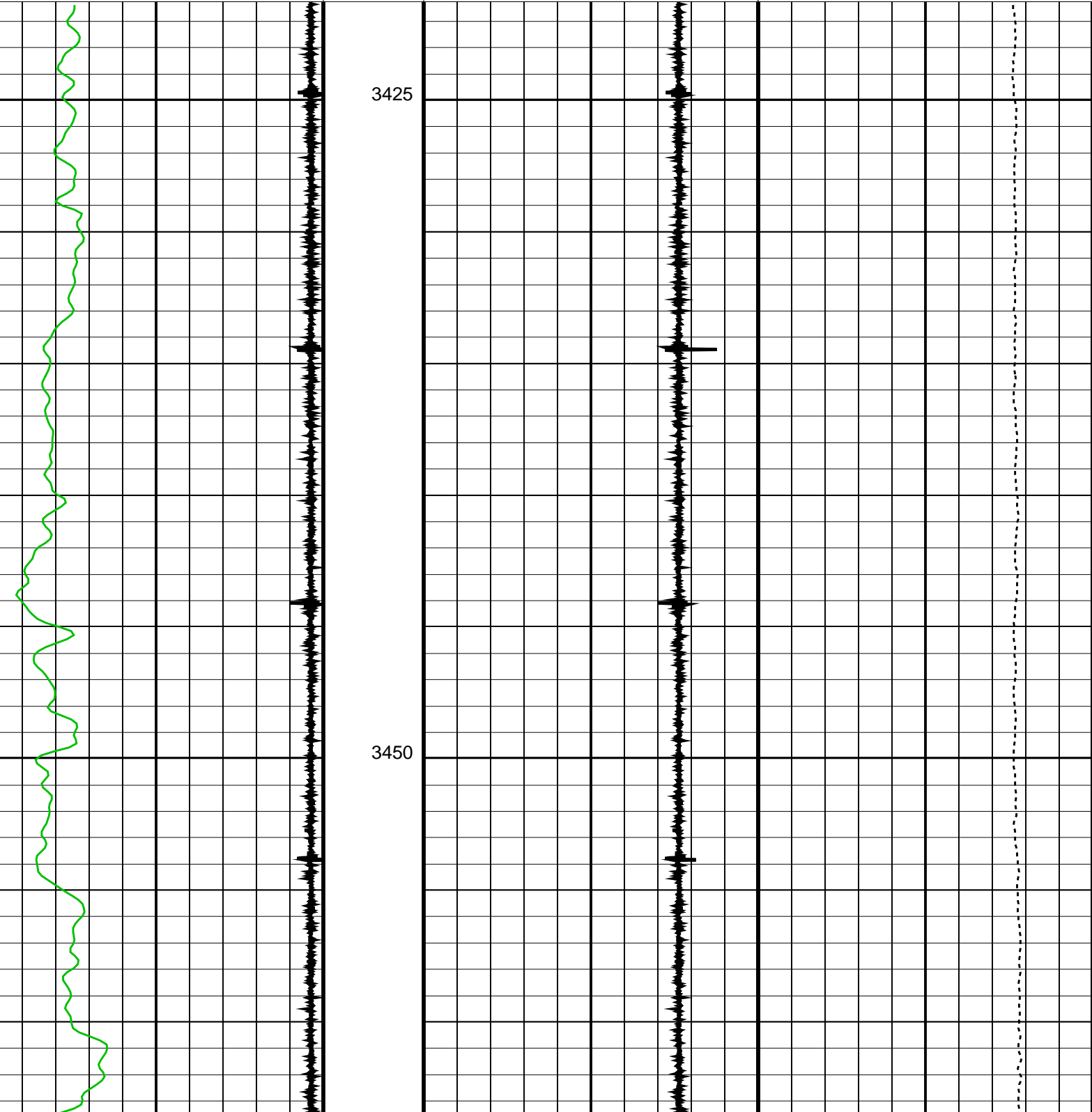
PIP SUMMARY

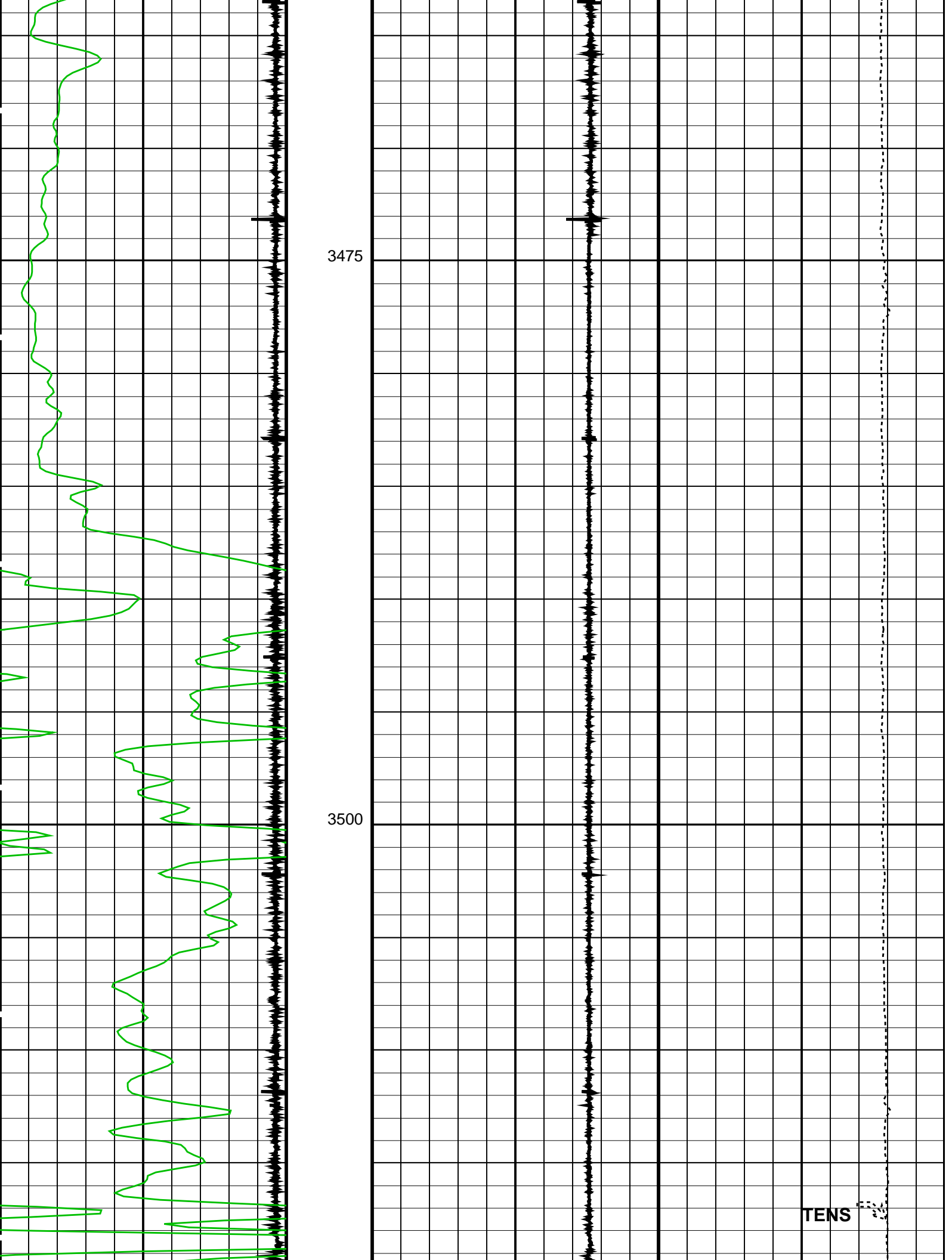
Time Mark Every 60 S

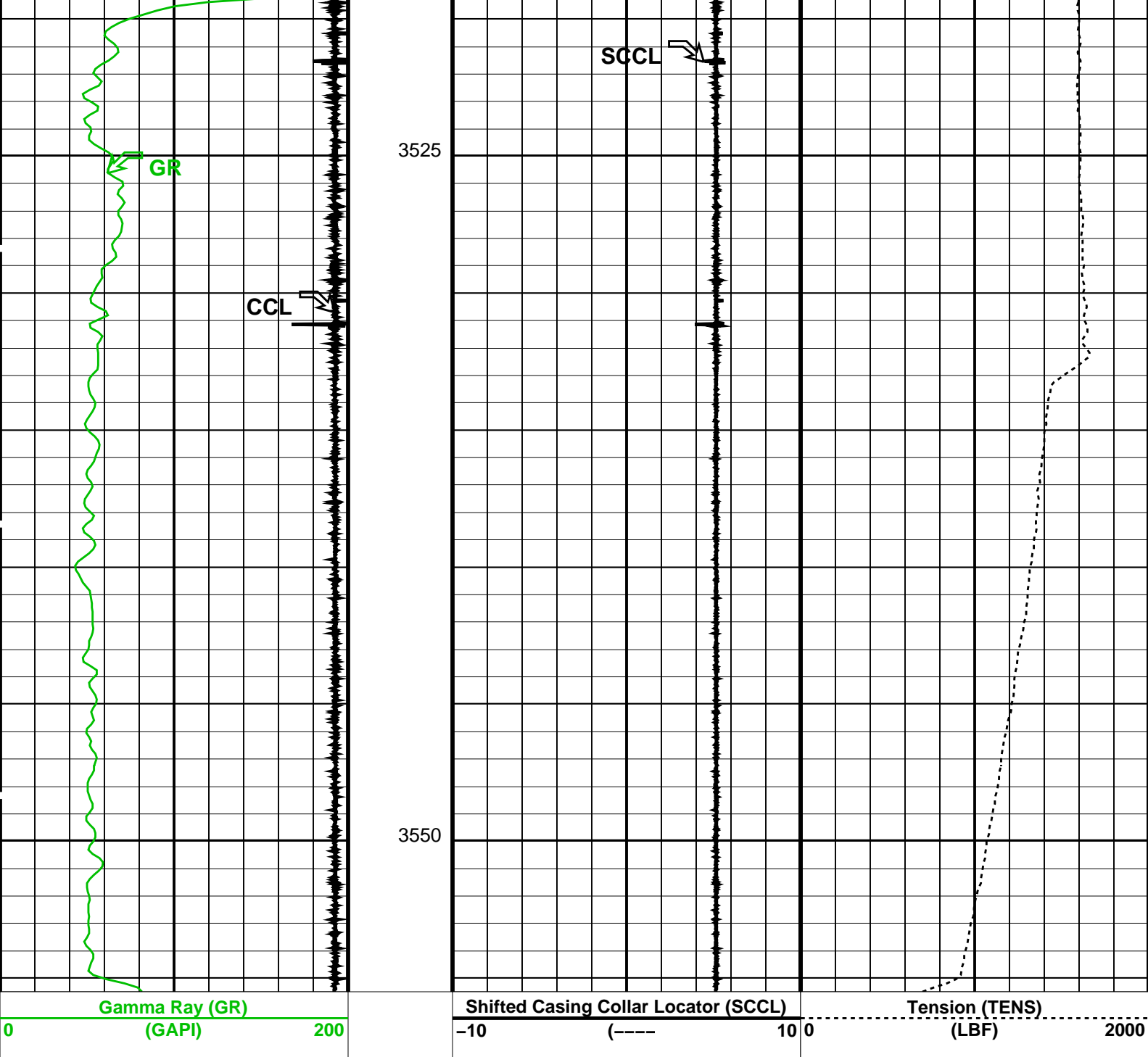
Casing Collar Locator (CCL)  
-19      (----)      1

Gamma Ray (GR)  
(GAPI)      0      200

Shifted Casing Collar Locator (SCCL)      Tension (TENS)  
-10      (----)      10 0      (LBF)      2000







Gamma Ray (GR)	0	200
(GAPI)		
Casing Collar Locator (CCL)	-19	1
(----		

PIP SUMMARY

Time Mark Every 60 S

Parameters		
DLIS Name	Description	Value
DO	System and Miscellaneous	
PP	Depth Offset for Playback	-0.1 M
	Playback Processing	RECOMPUTE

Format: PERFO Vertical Scale: 1:200 Graphics File Created: 18-Jan-2006 07:33

OP System Version: 13C0-300			
MCM			
SHM_GUN	PTC-2789-NUCL	PGGT-C	PTC-2789-NUCL

Input DLIS Files

Output DLIS Files

Company:

Esso Australia Ltd.

Schlumberger

Well:

A-27a

Field:

Bream A

Rig:

ISDL 453 / Prod 3

Country:

Australia

2 7/8" PURE-HSD PowerJet Omega

PGGT-GR-CCI

Perforating Record