

Company: **Esso Australia Ltd.**

Well: **BMA A-15**

Field: **Bream**

Rig: **Rig 453 / Prod 3**

Country: **Australia**

2 1/8" Phased Enerjet
PGGT-GR-CCI
Perforating Record

Rig: Rig 453 / Prod 3
Field: Bream
Location: Gippsland
Well: BMA A-15
Company: Esso Australia Ltd.

LOCATION			
Gippsland	Elev.:	K.B.	33.2 m
Basin		G.L.	0 m
Bass Strait		D.F.	33.2 m
Permanent Datum:	Mean Sea Level	Elev.:	0 m
Log Measured From:	Kelly Bushing	33.2 m	above Perm. Datum
Drilling Measured From:	Kelly Bushing		
State: Victoria	Max. Well Deviation 30 deg	Longitude 147° 46' 20.4071"E	Latitude 38° 29' 58.9208"S


Logging Date	24-Dec-2005		
Run Number	1		
Depth Driller	2129 m		
Schlumberger Depth	2129 m		
Bottom Log Interval	2103 m		
Top Log Interval	2100 m		
Casing Fluid Type	Production Fluids		
Salinity			
Density	1 g/cm3		
Fluid Level			
BIT/CASING/TUBING STRING			
Bit Size	8.500 in		
From	1962.9 m		
To	2225 m		
Casing/Tubing Size	4.500 in		
Weight	12.6 lbm/ft		
Grade	L-80		
From			
To			
Maximum Recorded Temperatures			
Logger On Bottom	24-Dec-2005	9:50	
Unit Number	41	AUSL	
Recorded By	J.Hogan/D.Molokhov		
Witnessed By	R.Morris		

PVT DATA				Run 1	Run 2	Run 3
Oil Density						
Water Salinity						
Gas Gravity						
Bo						
Bw						
1/Bg						
Bubble Point Pressure						
Bubble Point Temperature						
Solution GOR						
Maximum Deviation	30 deg					
CEMENTING DATA						
Primary/Squeeze	Primary					
Casing String No						
Lead Cement Type						
Volume						
Density						
Water Loss						
Additives						
Tail Cement Type						
Volume						
Density						
Water Loss						
Additives						
Expected Cement Top						
Logging Date						
Run Number						
Depth Driller						
Schlumberger Depth						
Bottom Log Interval						
Top Log Interval						
Casing Fluid Type						
Salinity						
Density						
Fluid Level						
BIT/CASING/TUBING STRING						
Bit Size						
From						
To						
Casing/Tubing Size						
Weight						
Grade						
From						
To						
Maximum Recorded Temperatures						
Logger On Bottom						
Unit Number						
Recorded By						
Witnessed By						

CCL stop depth= 2097.4m MDKB	
Gun shot at 2100m MDKB	
API Data: 2 1/8" BiPhased Retrievable EnerJet	
6 SPF, +-45° Phasing. Penetration: 22.9"	
Entrance Hole: 0.29"	
Crew: Paul Flood, Craig Armstrong (days)	
Peter Lawrence, Nathan Simmons (nights)	

RUN 1			RUN 2		
SERVICE ORDER #:			SERVICE ORDER #:		
PROGRAM VERSION:			PROGRAM VERSION:		
FLUID LEVEL:			FLUID LEVEL:		
LOGGED INTERVAL	START	STOP	LOGGED INTERVAL	START	STOP

EQUIPMENT DESCRIPTION					
RUN 1			RUN 2		

SURFACE EQUIPMENT			
WITM (SHM)			
DOWNHOLE EQUIPMENT			
MH-22 MH-22		9.73	
AH-38		9.25	
EQF-46 EQF-46		9.17	
EQF-43 EQF-43		7.34	
PGGT-C PGGC PGGH-A		5.51	
Gamma Ray	___	0.48	
Casing Co Tension	___	TOOL ZERO	

SHM_GUN
GUN

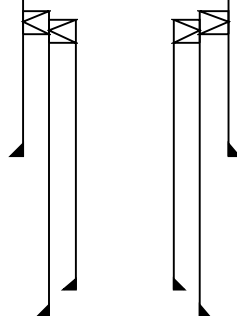
3.56

TOOL BOTTOM

MAXIMUM STRING DIAMETER 2.13 IN
MEASUREMENTS RELATIVE TO TOOL ZERO
ALL LENGTHS IN METERS

Bream A-15

Production String	(in)		(m)	Well Schematic				(m)	(in)		Casing String
	OD	ID	MD					MD	OD	ID	
								0.0	13.375	13.375	Casing String
								985.2	13.375	13.375	Casing Shoe



1771:07:000	
1783:09:625	4.500
1783:07:000	4.500

Casing String Liner Hanger

1962.99.625

Casing Shoe

2139.7	4.500
2175.0	7.000

Casing Shoe
Casing Shoe



Correlation Pass

MAXIS Field Log

Output DLIS Files

DEFAULT	PERFO_010LUP	FN:9	PRODUCER	24-Dec-2005 09:47	2104.9 M	2033.3 M
---------	--------------	------	----------	-------------------	----------	----------

OP System Version: 13C0-300
MCM

SHM_GUN	13C0-300	SAFE-ESIC	13C0-300
PGGT-C	13C0-300		

PIP SUMMARY

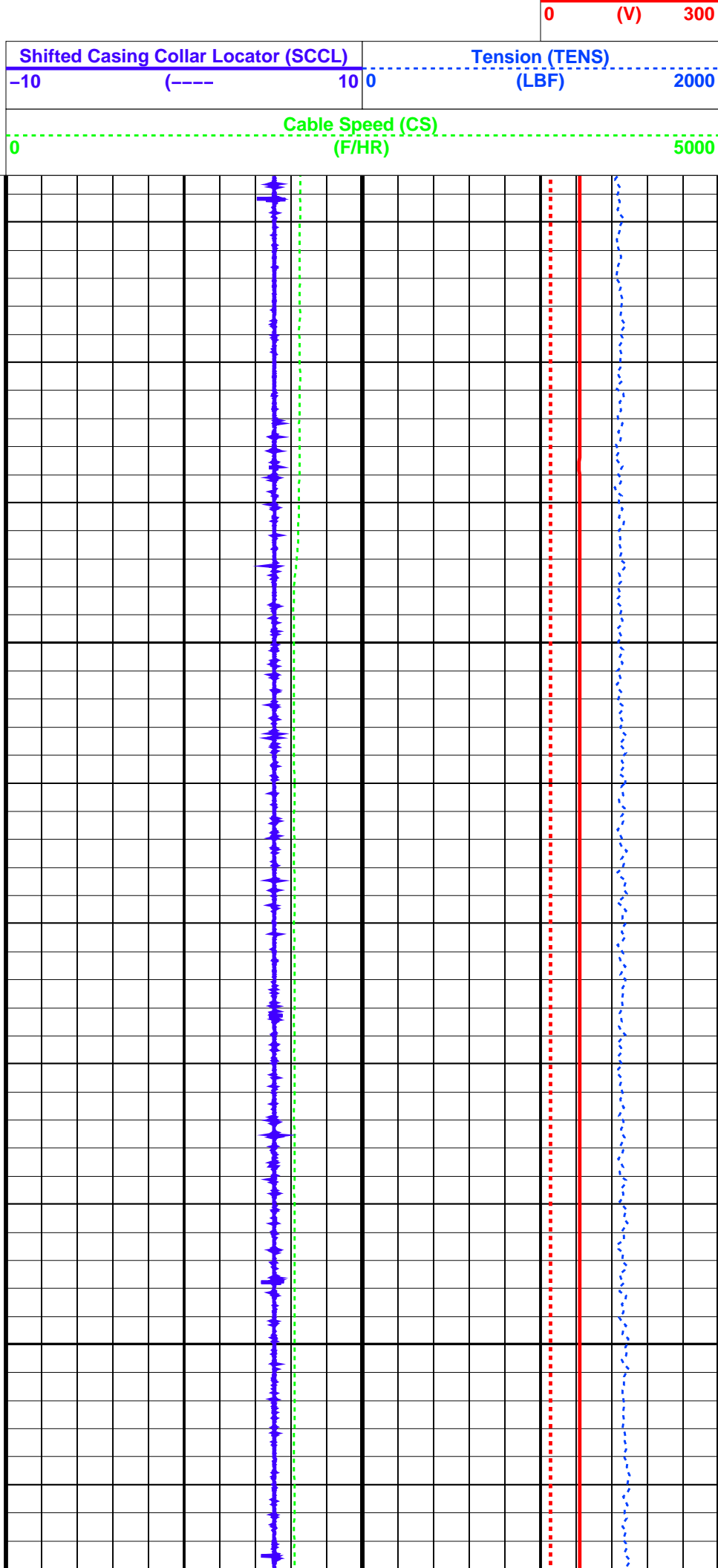
Time Mark Every 60 S

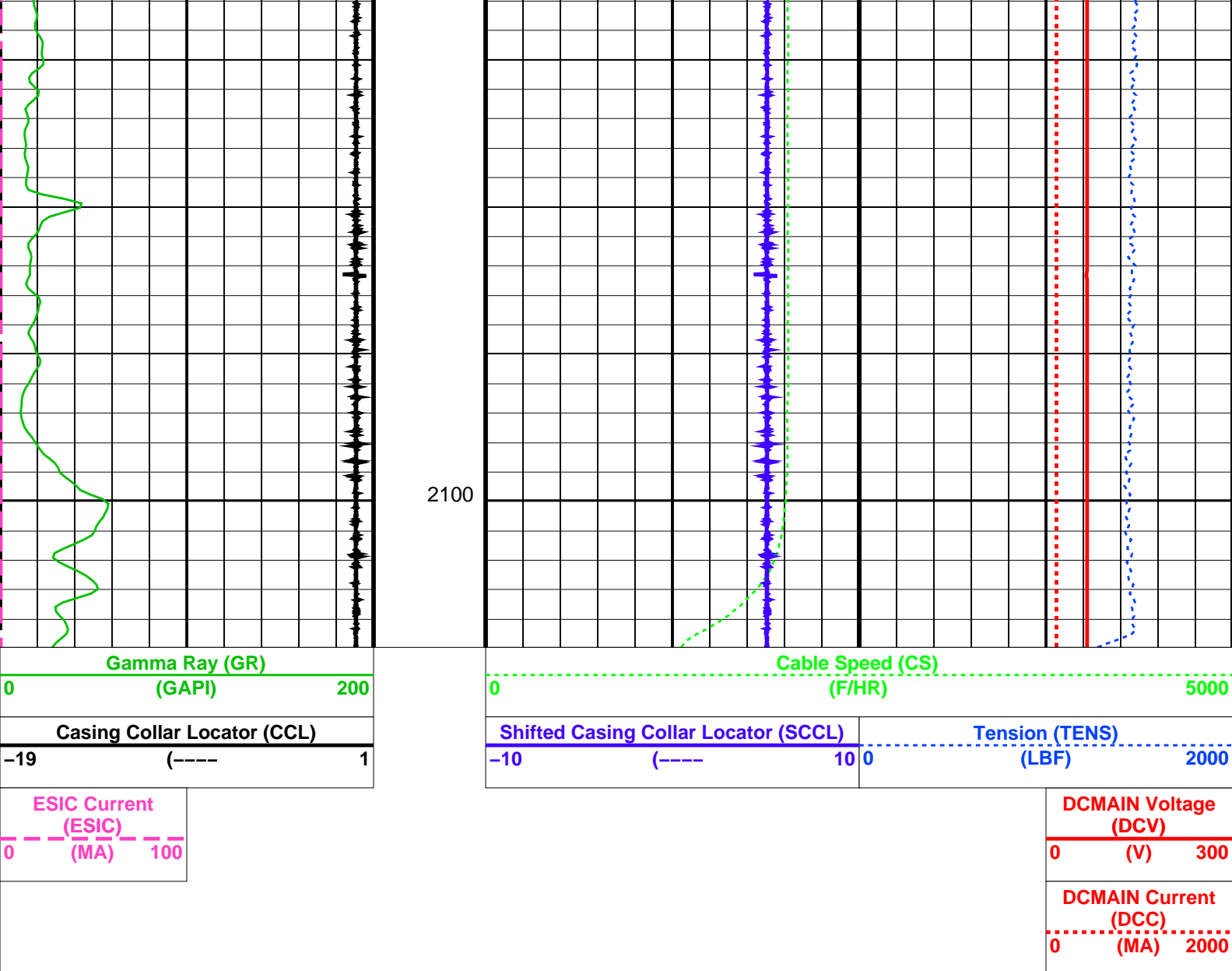
ESIC Current
(ESIC)

DCMAIN Current
(DCC)

0 (MA) 2000

**DCMAIN Voltage
(DCV)**





PIP SUMMARY

Time Mark Every 60 S

Parameters

DLIS Name	Description	Value
SAFE-ESIC: SAFE DETONATING SYSTEM		
ESDT	ESIC Shot Depth Temperature	176.667 DEGC

Format: PERFO Vertical Scale: 1:200

Graphics File Created: 24-Dec-2005 09:47

OP System Version: 13C0-300 MCM

SHM_GUN	13C0-300	SAFE-ESIC	13C0-300
PGGT-C	13C0-300		

Output DLIS Files

DEFAULT	PERFO_010LUP	FN:9	PRODUCER	24-Dec-2005 09:47
---------	--------------	------	----------	-------------------

Schlumberger

Shooting Pass

Output DLIS Files

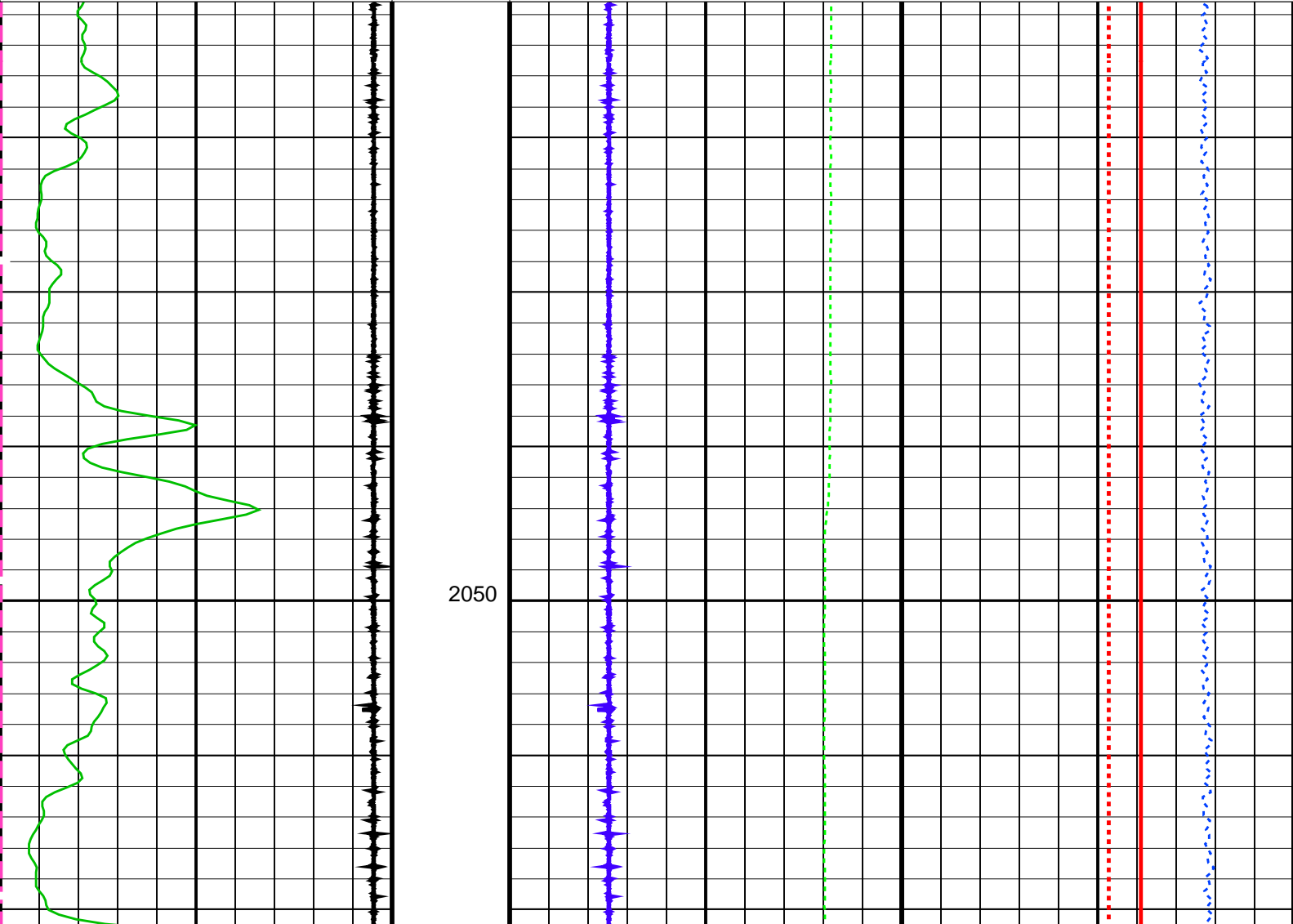
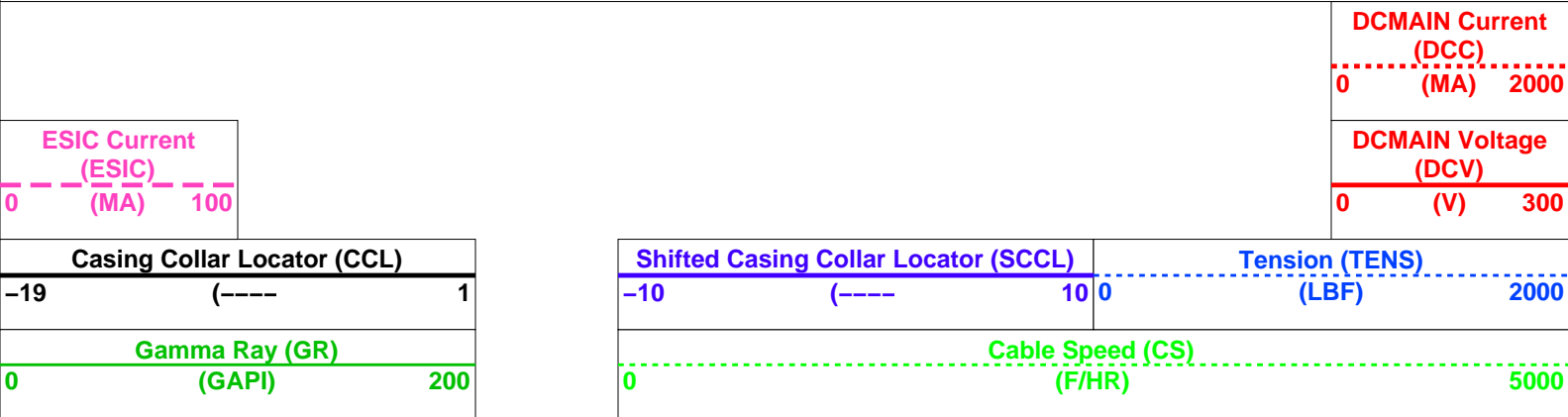
DEFAULT PERFO_011LUP FN:10 PRODUCER 24-Dec-2005 09:59 2104.9 M 2030.6 M

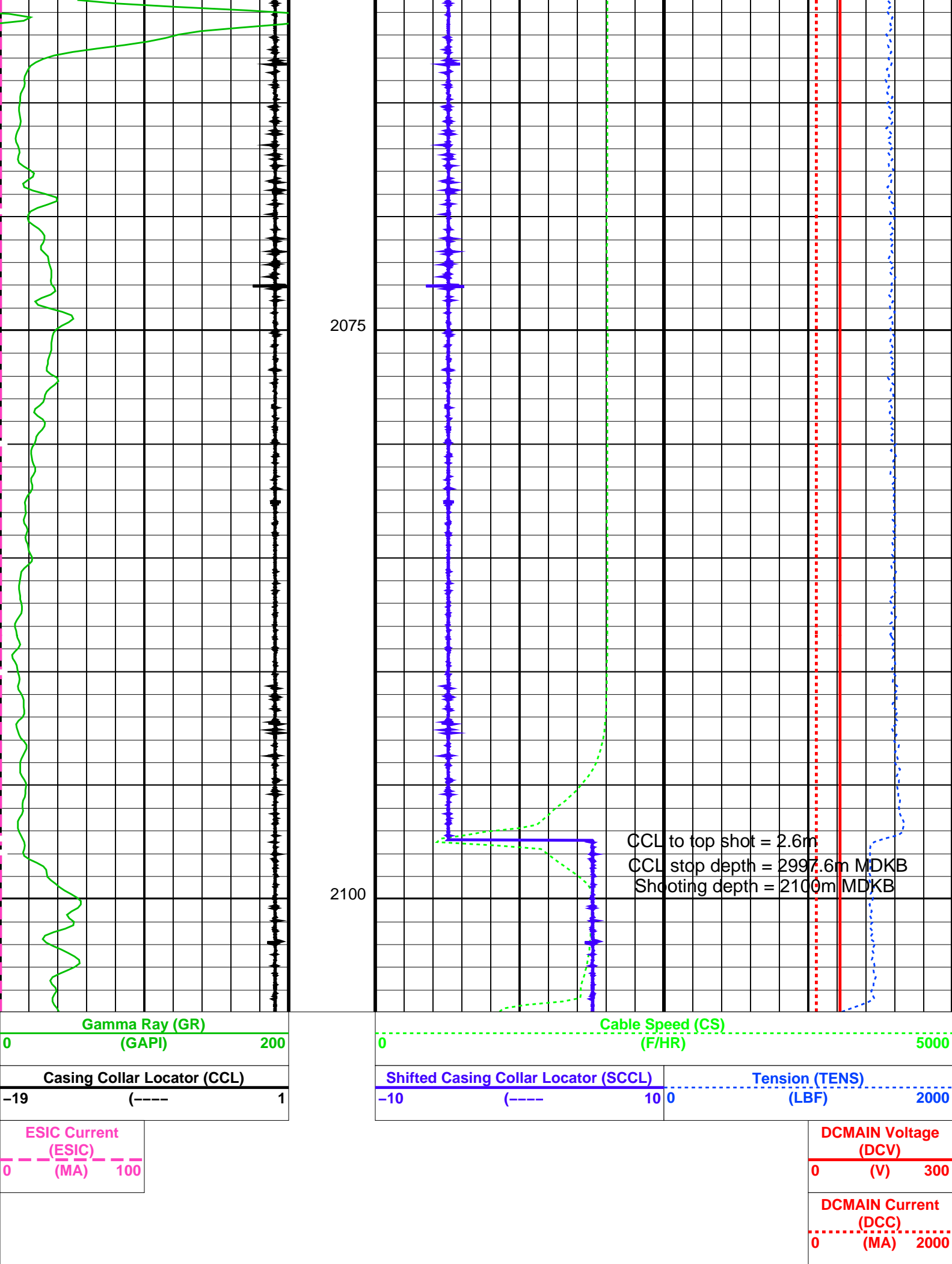
OP System Version: 13C0-300
MCM

SHM_GUN 13C0-300 SAFE-ESIC 13C0-300
PGGT-C 13C0-300

PIP SUMMARY

Time Mark Every 60 S





<div><div></div></div> Time Mark Every 60 S		PIP SUMMARY	
Parameters			
DLIS Name	Description	Value	
SAFE-ESIC: SAFE DETONATING SYSTEM			
ESDT	ESIC Shot Depth Temperature	176.667	DEGC
Format: PERFO	Vertical Scale: 1:200	Graphics File Created: 24-Dec-2005 09:59	
OP System Version: 13C0-300			
MCM			
SHM_GUN	13C0-300	SAFE-ESIC	13C0-300
PGGT-C	13C0-300		
Output DLIS Files			
DEFAULT	PERFO_011LUP	FN:10	PRODUCER 24-Dec-2005 09:59
Company: Esso Australia Ltd.			
Schlumberger			
Well:	BMA A-15		
Field:	Bream		
Rig:	Rig 453 / Prod 3		
Country:	Australia		
2 1/8" Phased Enerjet			
PGGT-GR-CCI			
Perforating Record			