



MASTERLOG

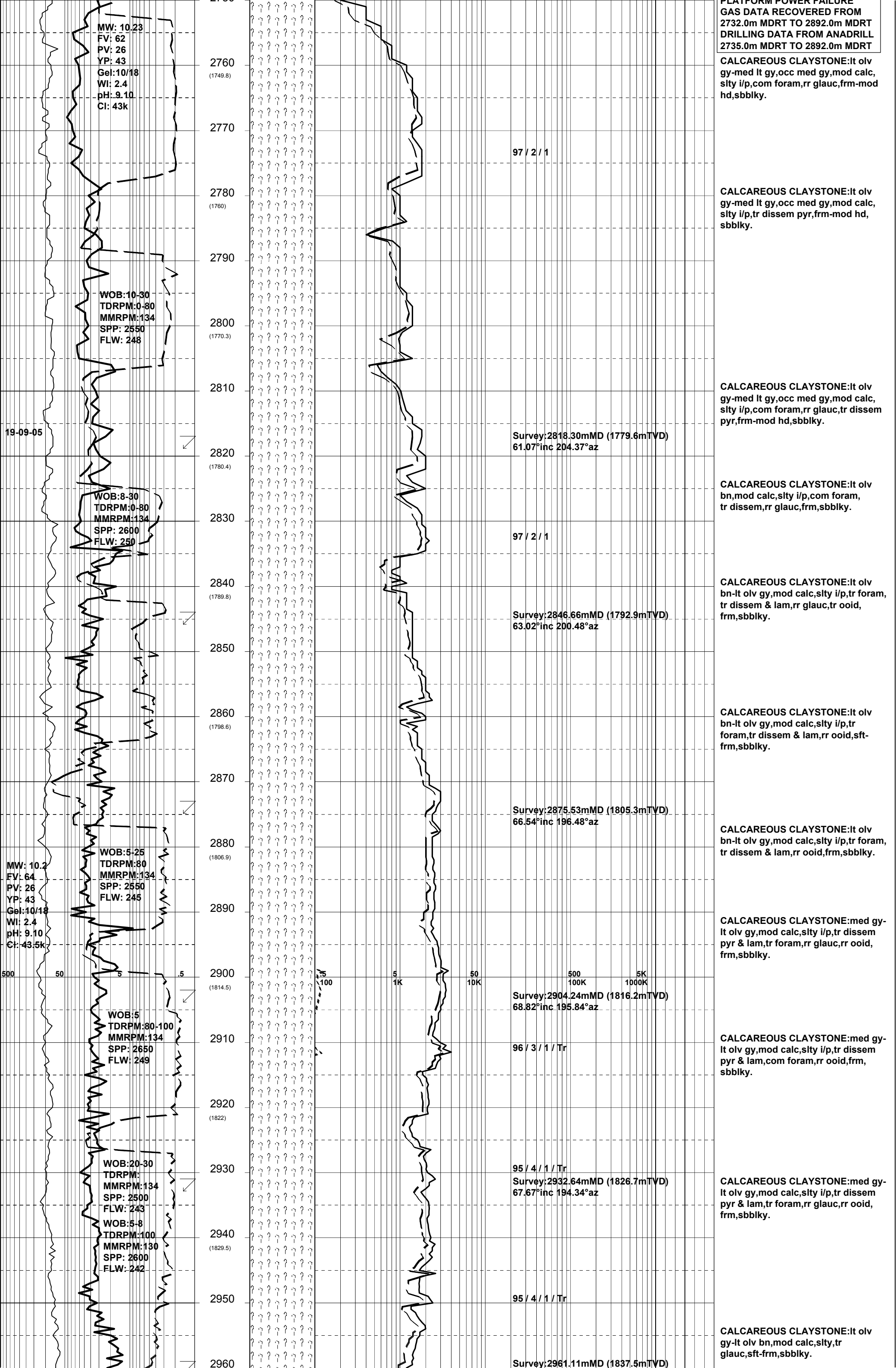
BMA A22A ST

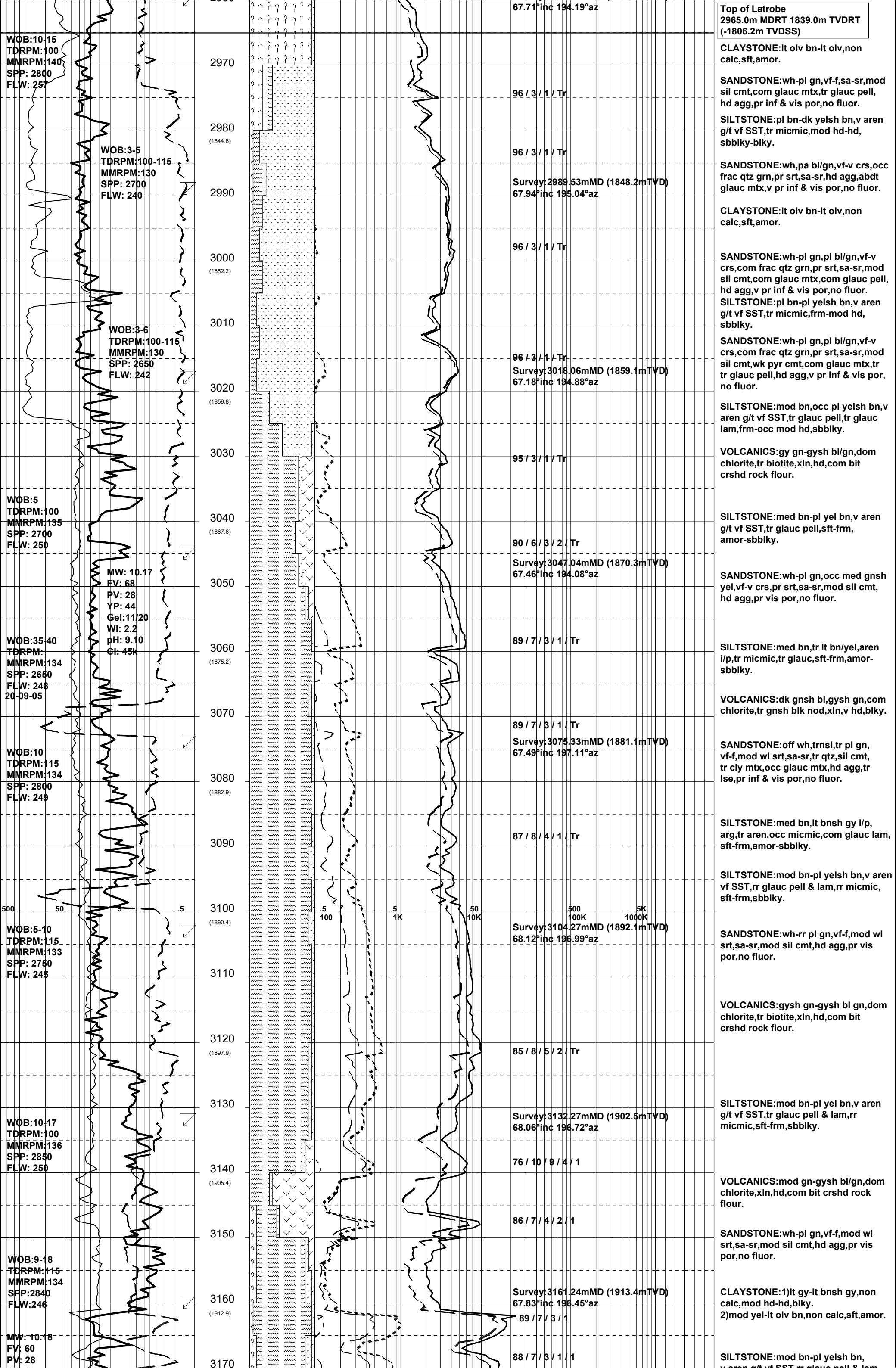


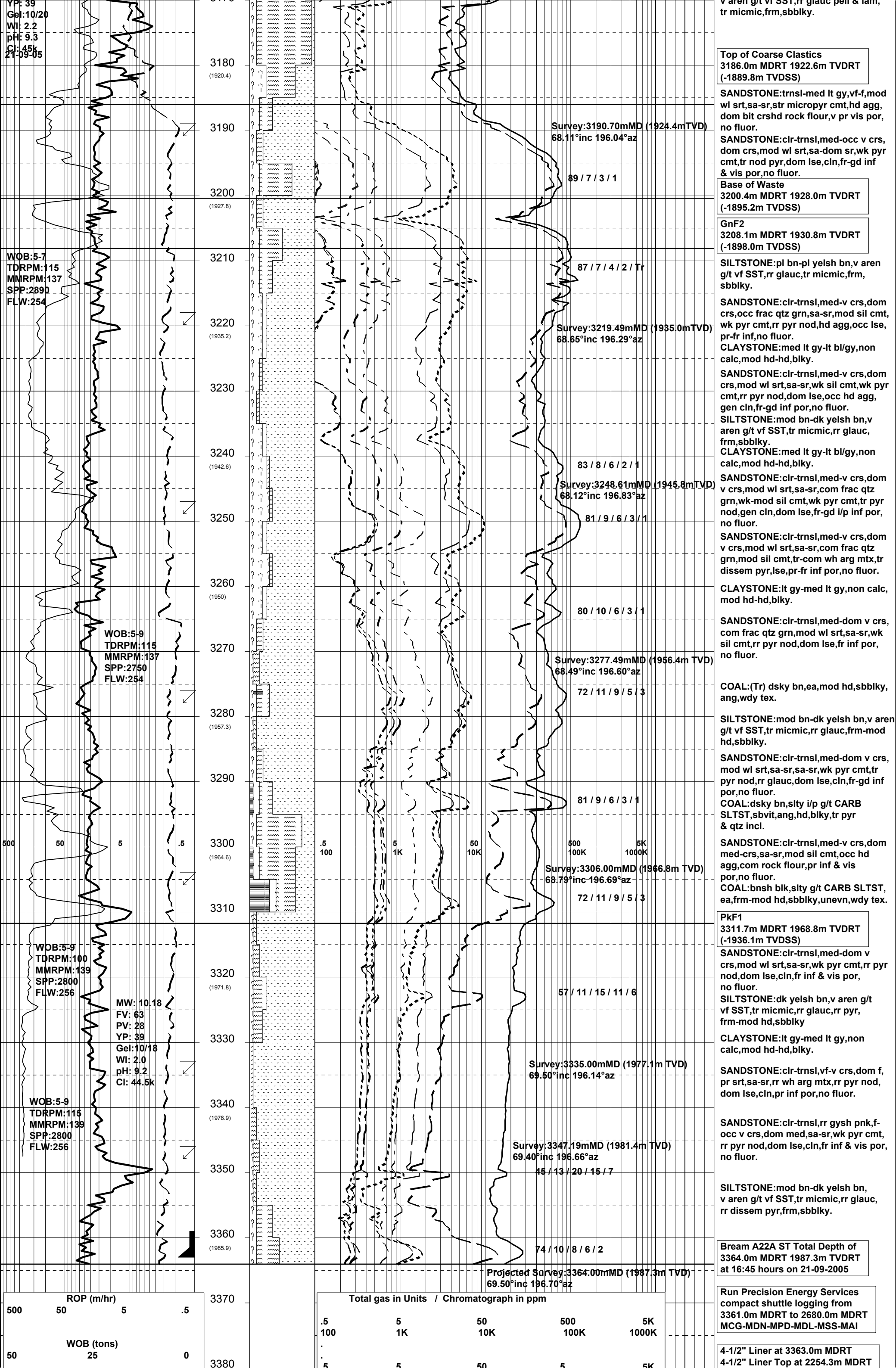
GENERAL	SURFACE POSITION	HOLE / CASING INFO	DATE / DEPTH	ENGINEERS
Country : AUSTRALIA Permit : VIC L13 Field : Bream Basin : GIPPSLAND Well Type : DEVELOPMENT Rig Name : NABORS 453	GDA Co-ord X : 147 46 20.232 E GDA Co-ord Y : 38 29 58.910 S MGA Co-ord X : 567342.490mE MGA Co-ord Y : 5738457.640mN RT to MSL : 32.82 m RT to Sea Bed : 92.22 m	8-1/2" Hole to 3364.0m MDRT 10-3/4" Surface Csg at 1346.0m MDRT 7" Whipstock Set at 2702.8m MDRT 4-1/2" Liner Top at 2254.3m MDRT 4-1/2" Liner Shoe at 3363.0m MDRT	Spud Date : 17-09-2005 Total Depth Date : 21-09-2005 Total Depth : 3364.0m MDRT True Vertical Depth : 1987.3m Log Scale : 1/ 500	Mark Smith Steve Oades V.B. Jagarlamudi

ABBREVIATIONS		LITHOLOGY LEGEND				ENGINEERING LEGEND	
MW Mud Weight FV Funnel Viscosity PV Plastic Viscosity YP Yield Point Gel Gel Strength WL Water Loss KCl Potassium Chloride Cl Chlorides Incl Inclination Az Azimuth	WOB Weight on Bit (klbs) RPM Rotations Per Min FLW Flow Rate (gpm) SPP Pump Pressure (psi) RR Re-Run Bit TG Trip Gas CG Connection Gas BG Background Gas DGP Drilled Gas Peak MM Mud Motor	CLAYSTONE SILTSTONE SST: F - V FINE SST: MEDIUM SST: COARSE SHALE	MARL LIMESTONE DOLOMITE CHERT CONGLOMERATE COAL	BRYOZOA RADIOLARITES ECHINOIDS CORALS FORAMINIFERA LITHIC FRAGMENT	CARB FRAGMENT QUARTZITE INTRUSIVES GLAUCONITE PYRITE CEMENT	CASING SHOE LINER HANGER BIT CHANGE DEVIA. SURVEY SWC UNRECOV SIDEWALL CORE CORE	WIRELINE LOGS MDT POINTS: PRESSURE ONLY SAMPLE SEAL FAILURE TIGHT

ROP (m/hr)		DEPTH (m) (TVD)	CUTTINGS LITHOLOGY	RESERVAL GAS DATA						CUT FLUOR	DIRECT FLUOR	LITHOLOGICAL DESCRIPTIONS and REMARKS								
WOB (tons)				C1	C2	C3	Total Gas in Units Chromatograph in PPM													
MWD Gamma Ray (api)				iC4	nC4	iC5	TG	500	5K											
500	50	5	.5	0	100	100	5	1K	50	10K	500	5K	100K	1000K	good	poor	good	poor		
				0	100	100	5	1K	50	10K	500	5K	100K	1000K	good	poor	good	poor		
Window from 2698.2m to 2702.3m MDRT		2700																		PREVIOUS WELL HISTORY Plugged & Abandoned Bream A22A September, 2005 10-3/4" Surface Csg 1346.0m MDRT 7" Intermediate Csg 3334.0m MDRT
WOB: 3-25 TDRPM: 0-80 MMRPM: 133 SPP: 2200 FLW: 246		2710																		Top of Bridge Plug (EZSV): 2702.8m MDRT 7" Whipstock set at 2702.8m MDRT Plugged back from 2933.0m MDRT to 2648.0m MDRT. Cement drilled 2648.0m MDRT to 2702.0m MDRT
18-09-05		2720 (1729.3)																		Drill new hole from 2702.0m MDRT to 2717.0m MDRT
		2730																		Bream A22A ST spudded from 2702.0m MDRT at 20:15 hours on 17-09-2005
WOB: 10-25 TDRPM: 80 MMRPM: 131 SPP: 2210 FLW: 236		2740 (1739.5)																		CALCAREOUS CLAYSTONE: med lt gy-med gy, mod calc, slty i/p, tr glauc, tr dissem pyr, rr foram, frm-mod hd, sbbiky.
		2750																		Drill with KCl/Glycol/PHPA mud system.
																				No H2S or CO2 Detected
																				DATABASE CORRUPTION AFTER PLATFORM POWER FAILURE







[illegible]