

[illegible]

Company: ExxonMobil

Well: TNA A-12

Field: Tuna

Rig: Prod 4

Country: Australia

2 1/8" Enerjet Gun
7 " MPBT Plug
Dump Bailer Record

Location: Gippsland Basin
Well: TNA A-12
Company: ExxonMobil

LOCATION

Gippsland Basin Bass Strait	Elev.: K.B. 32.9 m G.L. -59 m D.F. 31.4 m		
Permanent Datum: _____ Log Measured From: Kelly Bushing _____ Drilling Measured From: Kelly Bushing _____	Elev.: 0.0 m -32.9 m above Perm. Datum		
State: Victoria	Max. Well Deviation 41 deg	Longitude 148 25' 5.588" S	Latitude 38 10' 16.235" E

Logging Date

Run Number

Depth Driller

Schlumberger Depth

Bottom Log Interval

Top Log Interval

Casing Fluid Type

Salinity

Density

Fluid Level

BIT/CASING/TUBING STRING

Bit Size

From

To

Casing/Tubing Size

Weight

Grade

From

To

Maximum Recorded Temperatures

Logger On Bottom

Unit Number

Recorded By

Witnessed By

PVT DATA

Oil Density	Run 1	Run 2	Run 3
Water Salinity			
Gas Gravity			
Bo			
Bw			
1/Bg			
Bubble Point Pressure			
Bubble Point Temperature			
Solution GOR			
Maximum Deviation	41 deg		
CEMENTING DATA			
Primary/Squeeze	Primary		
Casing String No			
Lead Cement Type			
Volume			
Density			
Water Loss			
Additives			
Tail Cement Type			
Volume			
Density			
Water Loss			
Additives			
Expected Cement Top			

Logging Date

Run Number

Depth Driller

Schlumberger Depth

Bottom Log Interval

Top Log Interval

Casing Fluid Type

Salinity

Density

Fluid Level

BIT/CASING/TUBING STRING

Bit Size

From

To

Casing/Tubing Size

Weight

Grade

From

To

Maximum Recorded Temperatures

Logger On Bottom

Unit Number

Recorded By

Witnessed By

DEPTH SUMMARY LISTING

Date Created: 30-OCT-2005 12:17:47

Depth System Equipment

Depth Measuring Device		Tension Device		Logging Cable	
Type:	IDW-H	Type:	CMTD-C	Type:	2-32ZT
Serial Number:	797	Serial Number:	1037	Serial Number:	4207
Calibration Date:	01-May-2005	Calibration Date:	22-Dec-2005	Length:	4799.99 M
Calibrator Serial Number:	1009	Calibrator Serial Number:	57144	Conveyance Method: Wireline Rig Type: Rigless	
Calibration Cable Type:	2-32ZT	Calibration Gain:	1.00		
Wheel Correction 1:	-3	Calibration Offset:	0.00		
Wheel Correction 2:	2				

Depth Control Parameters

Log Sequence: First Log In the Well

Depth Control Remarks

- 1.
- 2.
- 3.
- 4.
- 5.
- 6.

DISCLAIMER

THE USE OF AND RELIANCE UPON THIS RECORDED-DATA BY THE HEREIN NAMED COMPANY (AND ANY OF ITS AFFILIATES, PARTNERS, REPRESENTATIVES, AGENTS, CONSULTANTS AND EMPLOYEES) IS SUBJECT TO THE TERMS AND CONDITIONS AGREED UPON BETWEEN SCHLUMBERGER AND THE COMPANY, INCLUDING: (a) RESTRICTIONS ON USE OF THE RECORDED-DATA; (b) DISCLAIMERS AND WAIVERS OF WARRANTIES AND REPRESENTATIONS REGARDING COMPANY'S USE OF AND RELIANCE UPON THE RECORDED-DATA; AND (c) CUSTOMER'S FULL AND SOLE RESPONSIBILITY FOR ANY INFERENCE DRAWN OR DECISION MADE IN CONNECTION WITH THE USE OF THIS RECORDED-DATA.

OTHER SERVICES1

OS1: None
OS2:
OS3:
OS4:
OS5:

REMARKS: RUN NUMBER 1

Log correlated to Solar log dated 23 APR 2003, provided by the client.

Objective:

To perforate the well at 2351m to 2353m MDKB using 2 1/8" Enerjet gun
loaded with PowerSpiral charges.

After perforating, flowed well for 15 min to obtain FBHP, FBHT and for well
clean up.

Set 7" MPBT Plug at 2372m MDKB with 1 run of water and 1 run of cement,

API Data:
EJ Power Spiral, HMX charges
Entrance Hole – 0.25"
Penetration – 27.3"
Specialist: Paul Tarrant
Operators: Andy Hall, Eddy Mez
Performed by Schlumberger

RUN 1			RUN 2		
PROGRAM VERSION:		46000447	PROGRAM VERSION:		
FLUID LEVEL:		13C0-300	FLUID LEVEL:		
LOGGED INTERVAL	START	STOP	LOGGED INTERVAL	START	STOP

RUN 1 RUN 2

MWPM-AA	SURFACE EQUIPMENT	MPBM 81	SURFACE EQUIPMENT
---------	-------------------	---------	-------------------

DOWNHOLE EQUIPMENT			DOWNHOLE EQUIPMENT		
AH-SWBS AH-SWBS 731		10.29	AH-SWBS AH-SWBS 731		12.02
AH-SWBS AH-SWBS 761		9.60	AH-SWBS AH-SWBS 761		11.34
AH-SWBS AH-SWBS 762		8.92	AH-SWBS AH-SWBS 762		10.65
AH-SWBS AH-SWBS 763		8.23	MH-22 MH-22	CCL Tachometer Cable Cur Head Volt Tension	9.97
MH-SWHS MH-SWHS 726		7.54	CCL-L CCL-L 4191	TOOL ZERO	9.64
MWGT-AA MWPG-AA 24 MWGH-AA 24	MWPG GR	7.21	MPSU-CA MPSU-CA 1011		9.18
MWPT-CA MWPH-AA 94 MWPS-AA 94		6.24			
	CCL SMWP Pres SMWP Temp Tension	TOOL ZERO			



1000

TOOL BOTTOM

TOOL BOTTOM

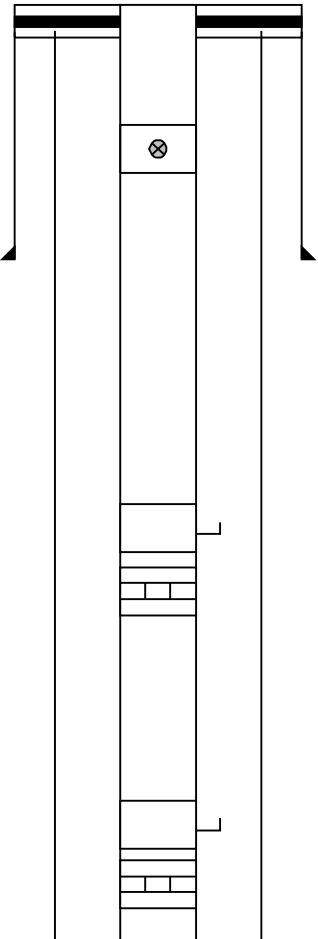
Drawing Date: 10/31/2005

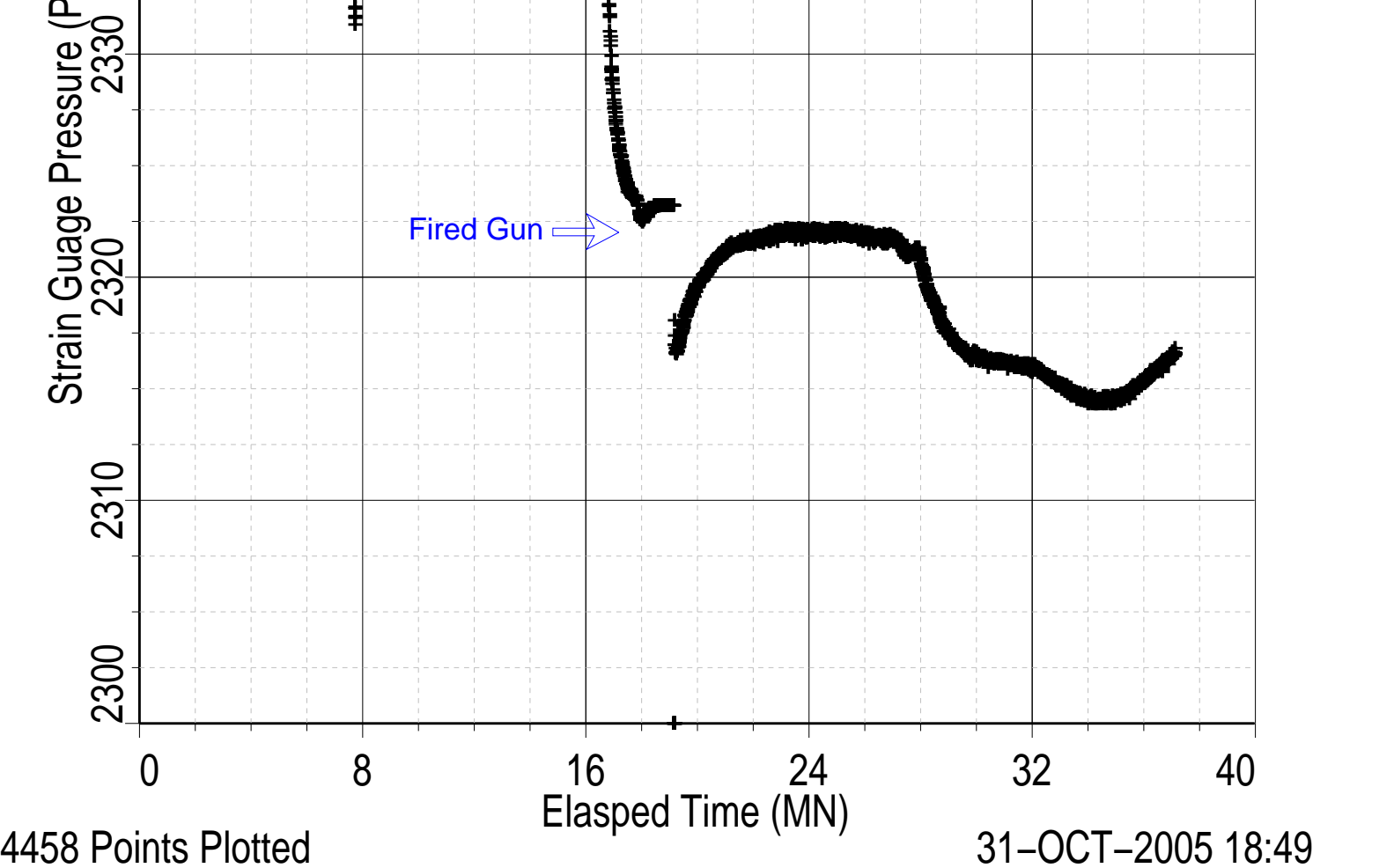
API #:

Rig Name: Tuna

Reference Datum: Kelly Bushing

Elevation: 32.9 m

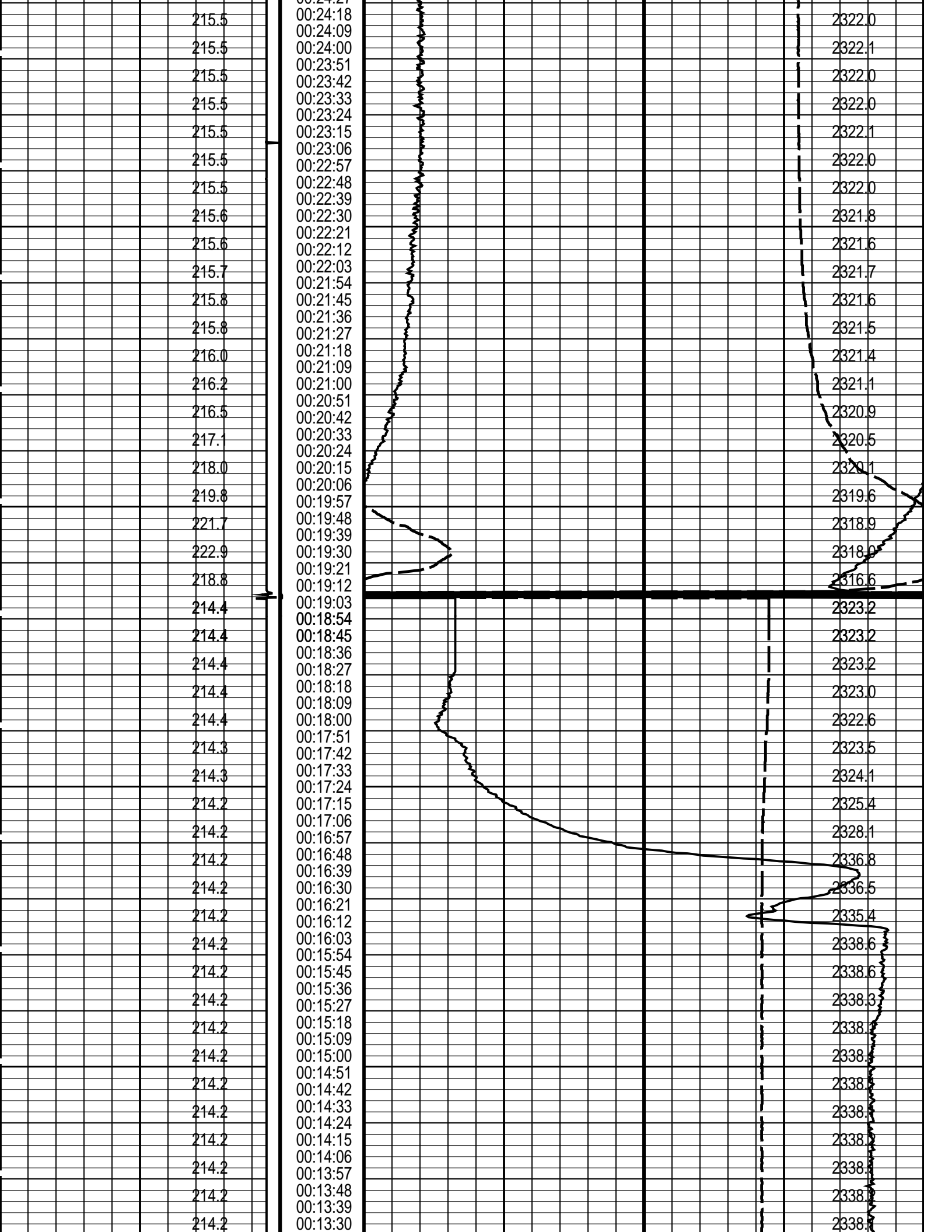
Production String	(in)		(m)	Well Schematic	(m)		(in)	Casing String
	OD	ID			MD	MD		
Tubing Bagger	13.505	2.992	13.6		14.8	13.825	Casing String	
Shutin Valve	3.500		459.1		732.8	13.375	Casing Shoe	
Gas Lift Mandrel	3.500		1170.6					
Nipple	3.500		1185.0					
Gas Lift Mandrel	3.500		1586.2					
Nipple	3.500		1602.5					



Output DLIS Files						
DEFAULT	PERFO_012LTP	FN:11	PRODUCER	30-Oct-2005 15:25	2347.4 M	5.7 M
OP System Version: 13C0-300						
MCM						
MWP_GUN	SRC-2820-ASFS-WPP_1	MWPT-CA		SRC-2820-ASFS-WPP_1		
MWGT-AA	SRC-2820-ASFS-WPP_1					

PIP SUMMARY					
Time Mark Every 60 S					
CCL From CCL to T1		Firing Sequence State (FSS SL) (----	Temperature (TEMP_MWPT_SL) (DEGF)		
		0	0 1024		
Casing Collar Locator (CCL_SL) -19 (----		1	Strain Gauge Pressure (SGP_SL) (PSIA)		
			0 20		
215.6		00:37:03	2316.4		
215.6		00:36:54	2316.2		
215.6		00:36:45	2315.9		
215.6		00:36:36	2315.7		
215.6		00:36:27	2315.3		
215.6		00:36:18	2315.1		
215.6		00:36:09	2315.0		
215.6		00:36:00			
215.6		00:35:51			
215.6		00:35:42			
215.6		00:35:33			
215.6		00:35:24			

[illegible]



214.2	00:13:21	2338.1
214.2	00:13:12	2338.1
214.2	00:13:03	2338.1
214.2	00:12:54	2338.1
214.2	00:12:45	2338.1
214.2	00:12:36	2338.0
214.2	00:12:27	2338.0
214.2	00:12:18	2338.0
214.2	00:12:09	2338.0
214.2	00:12:00	2338.0
214.2	00:11:51	2338.0
214.2	00:11:42	2338.0
214.2	00:11:33	2338.0
214.2	00:11:24	2338.0
214.2	00:11:15	2338.0
214.2	00:11:06	2338.0
214.2	00:10:57	2338.0
214.2	00:10:48	2338.0
214.2	00:10:39	2338.0
214.2	00:10:30	2338.0
214.2	00:10:21	2338.0
214.2	00:10:12	2338.0
214.2	00:10:03	2338.0
214.2	00:09:54	2338.0
214.2	00:09:45	2338.0
214.2	00:09:36	2338.0
214.2	00:09:27	2338.0
214.2	00:09:18	2338.0
214.2	00:09:09	2338.0
214.2	00:09:00	2338.0
214.2	00:08:51	2338.0
214.2	00:08:42	2338.0
214.2	00:08:33	2338.0
214.2	00:08:24	2338.0
214.2	00:08:15	2338.0
214.2	00:08:06	2338.0
214.2	00:07:57	2338.0
214.2	00:07:48	2338.0
214.2	00:07:39	2338.0
214.2	00:07:30	2338.0
214.2	00:07:21	2338.0
214.2	00:07:12	2338.0
214.2	00:07:03	2338.0
214.2	00:06:54	2338.0
214.2	00:06:45	2338.0
214.2	00:06:36	2338.0
214.2	00:06:27	2338.0
214.2	00:06:18	2338.0
214.2	00:06:09	2338.0
214.2	00:06:00	2338.0
214.2	00:05:51	2338.0
214.2	00:05:42	2338.0
214.2	00:05:33	2338.0
214.2	00:05:24	2338.0
214.2	00:05:15	2338.0
214.2	00:05:06	2338.0
214.2	00:04:57	2338.0
214.2	00:04:48	2338.0
214.2	00:04:39	2338.0
214.2	00:04:30	2338.0
214.2	00:04:21	2338.0
214.2	00:04:12	2338.0
214.2	00:04:03	2338.0
214.2	00:03:54	2338.0
214.2	00:03:45	2338.0
214.2	00:03:36	2338.0
214.2	00:03:27	2338.0
214.2	00:03:18	2338.0
214.2	00:03:09	2338.0
214.2	00:03:00	2338.0
214.2	00:02:51	2338.0
214.2	00:02:42	2338.0
214.2	00:02:33	2338.0
214.2	00:02:24	2338.0

214.2	00:02:24	233798
214.2	00:02:15	233798
214.2	00:02:06	233799
214.2	00:01:57	233799
214.2	00:01:48	233800
214.2	00:01:39	233800
214.2	00:01:30	233799
214.2	00:01:21	233798
214.2	00:01:12	233798
214.2	00:01:03	233799
214.2	00:00:54	233799
214.2	00:00:45	233799
214.2	00:00:36	233798
214.2	00:00:27	233798
214.2	00:00:18	233799
214.2	00:00:09	233799
214.2	00:00:00	233800

Casing Collar Locator (CCL_SL)		Elapsed Time (ETIM) (S)	Strain Gauge Pressure (SGP_SL)	
-19	(----		0	(PSIA)
CCL From CCL to T1	Firing Sequence State (FSS SL) (---- <td></td> <td colspan="2">Temperature (TEMP_MWPT_SL) (DEGF)</td>		Temperature (TEMP_MWPT_SL) (DEGF)	
	0	1024	0	20

	Temperature (TEMP_MWPT_SL) (DEGF)			Pressure (SGPA_ SL) (PSIA)
--	---	--	--	----------------------------------

PIP SUMMARY

Time Mark Every 60 S


Parameters			
DLIS Name	Description	Value	
MWPT-CA: MEASUREMENT WHILE PERFORATING TOOL			
DEVI_FL_CORR	Deviation Angle for Flow Line Correction	0	DEG
FLD	Flow Line Density	1	G/C3
MWPT_NULL_SOURCE	MWPT NULL Temperature Source	TEMS	
MWPT_NULL_TEMP	MWPT NULL Temperature	0.0	DEGC

Format: MWP_SL Vertical Scale: 1" per 60S Graphics File Created: 30-Oct-2005 15:25

OP System Version: 13C0-300
MCM

MWP_GUN	SRC-2820-ASFS-WPP_t	MWPT-CA	SRC-2820-ASFS-WPP_t
MWGT-AA	SRC-2820-ASFS-WPP_t		

Output DLIS Files				
DEFAULT	PERFO_012LTP	FN:11	PRODUCER	30-Oct-2005 15:25



2 1/8" Enerjet Gun
Shooting Pass

MAXIS Field Log

Output DLIS Files						
DEFAULT	PERFO_010LUP	FN:9	PRODUCER	30-Oct-2005 15:22	2356.1 M	2318.5 M

OP System Version: 13C0-300

MCM

MWP_GUN
MWGT-AA

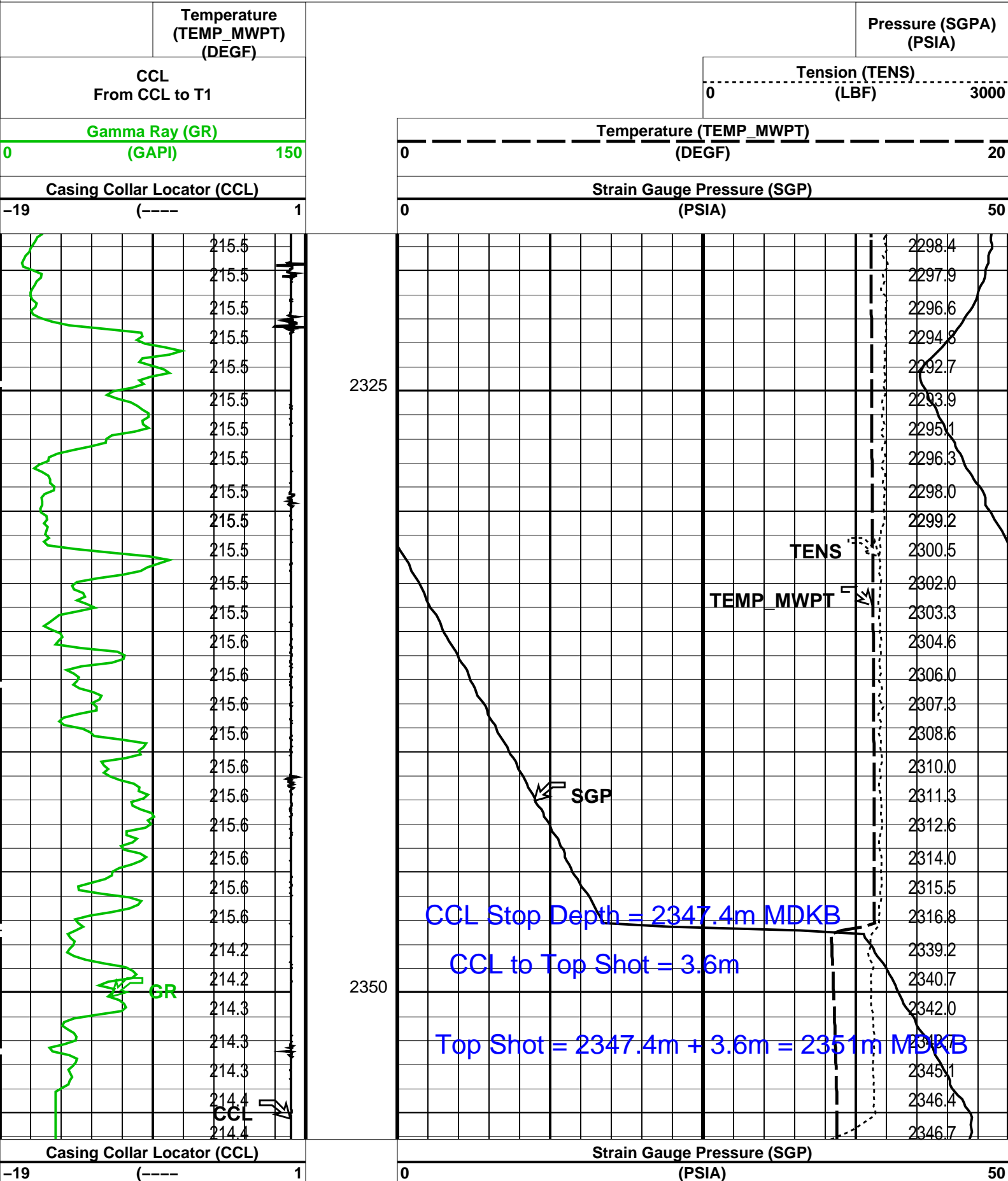
SRC-2820-ASFS-WPP_t
SRC-2820-ASFS-WPP_t

MWPT-CA

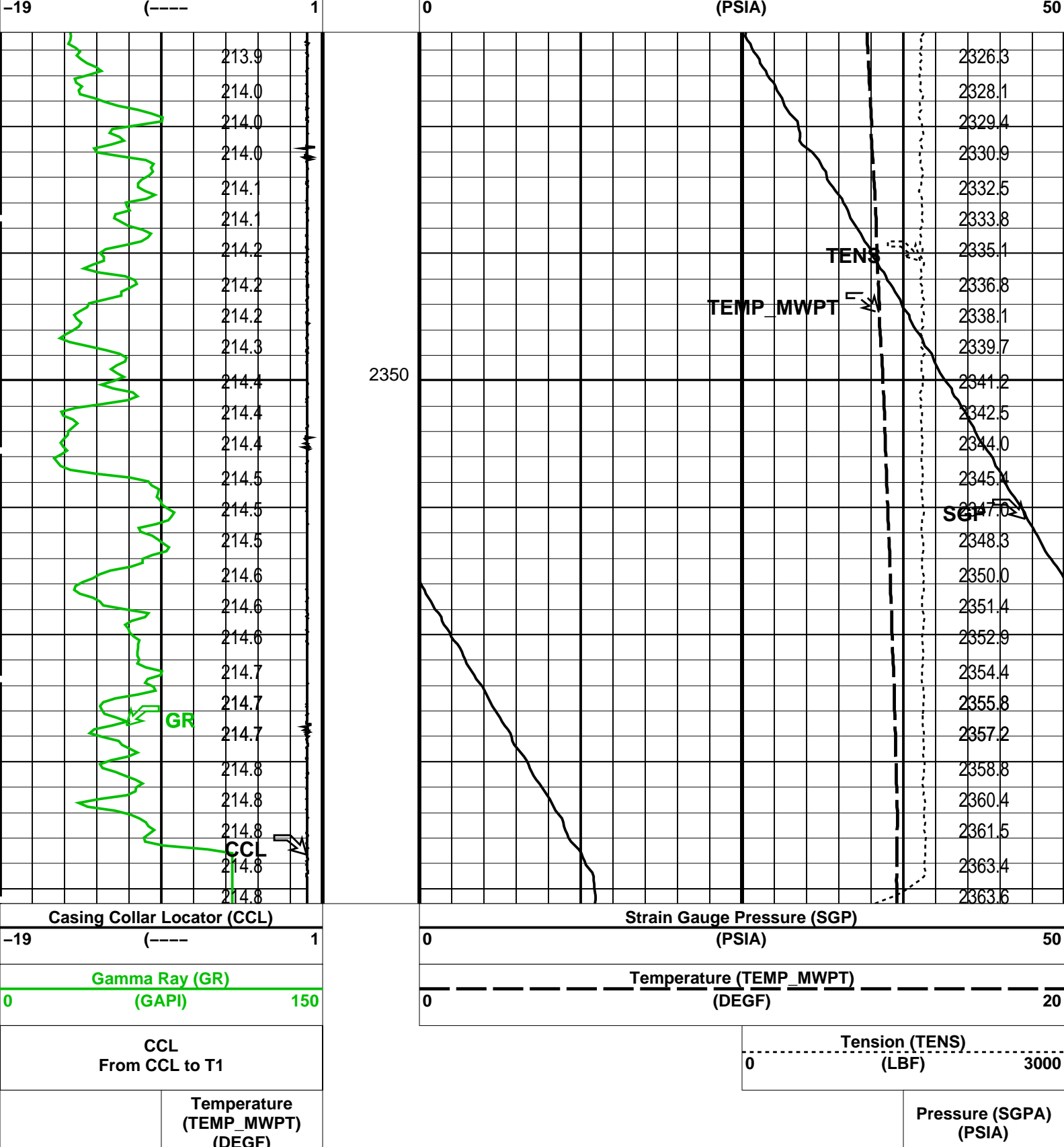
SRC-2820-ASFS-WPP_t

PIP SUMMARY

Time Mark Every 60 S



Gamma Ray (GR)		Temperature (TEMP_MWPT)	
0	(GAPI)	150	(DEGF)
CCL From CCL to T1		Tension (TENS)	
		0	(LBF)
Temperature (TEMP_MWPT) (DEGF)		Pressure (SGPA) (PSIA)	
PIP SUMMARY			
Time Mark Every 60 S			
Parameters			
DLIS Name	Description	Value	
MWPT-CA: MEASUREMENT WHILE PERFORATING TOOL			
DEVI_FL_CORR	Deviation Angle for Flow Line Correction	0	DEG
FLD	Flow Line Density	1	G/C3
MWPT_NULL_SOURCE	MWPT NULL Temperature Source	TEMS	
MWPT_NULL_TEMP	MWPT NULL Temperature	0.0	DEGC
Format: MWP	Vertical Scale: 1:200	Graphics File Created: 30-Oct-2005 15:22	
OP System Version: 13C0-300			
MCM			
MWP_GUN	SRC-2820-ASFS-WPP_1	MWPT-CA	SRC-2820-ASFS-WPP_1
MWGT-AA	SRC-2820-ASFS-WPP_1		
Output DLIS Files			
DEFAULT	PERFO_010LUP	FN:9	PRODUCER 30-Oct-2005 15:22
<div><div><div>Schlumberger</div></div><div>2 1/8" Enerjet Gun Correlation Pass</div></div> <div>MAXIS Field Log</div>			
Output DLIS Files			
DEFAULT	PERFO_009LUP	FN:8	PRODUCER 30-Oct-2005 15:16 2370.6 M 2336.3 M
OP System Version: 13C0-300			
MCM			
MWP_GUN	SRC-2820-ASFS-WPP_1	MWPT-CA	SRC-2820-ASFS-WPP_1
MWGT-AA	SRC-2820-ASFS-WPP_1		
PIP SUMMARY			
Time Mark Every 60 S			
	Temperature (TEMP_MWPT) (DEGF)	Pressure (SGPA) (PSIA)	
CCL From CCL to T1		Tension (TENS)	
		0	(LBF)
Gamma Ray (GR)		Temperature (TEMP_MWPT)	
0	(GAPI)	150	(DEGF)
Casing Collar Locator (CCL)		Strain Gauge Pressure (SGP)	



Parameters		
DLIS Name	Description	Value
MWPT-CA: MEASUREMENT WHILE PERFORATING TOOL		
DEVI_FL_CORR	Deviation Angle for Flow Line Correction	0 DEG
FLD	Flow Line Density	1 G/C3
MWPT_NULL_SOURCE	MWPT NULL Temperature Source	TEMS
MWPT_NULL_TEMP	MWPT NULL Temperature	0.0 DEGC

Format: MWP Vertical Scale: 1:200

Graphics File Created: 30-Oct-2005 15:16

OP System Version: 13C0-300
MCM

MWP_GUN SRC-2820-ASFS-WPP_t MWPT-CA SRC-2820-ASFS-WPP_t
MWGT-AA SRC-2820-ASFS-WPP_t

Output DLIS Files

DEFAULT PERFO_009LUP FN:8 PRODUCER 30-Oct-2005 15:16



Cement Dump Bailer
Run 2 – Cement

MAXIS Field Log

Input DLIS Files

DEFAULT PERFO_035LUP FN:34 PRODUCER 31-Oct-2005 16:30 2358.2 M 2315.3 M

Output DLIS Files

DEFAULT PERFO_037PUP FN:36 PRODUCER 31-Oct-2005 16:38 2361.3 M 2318.8 M

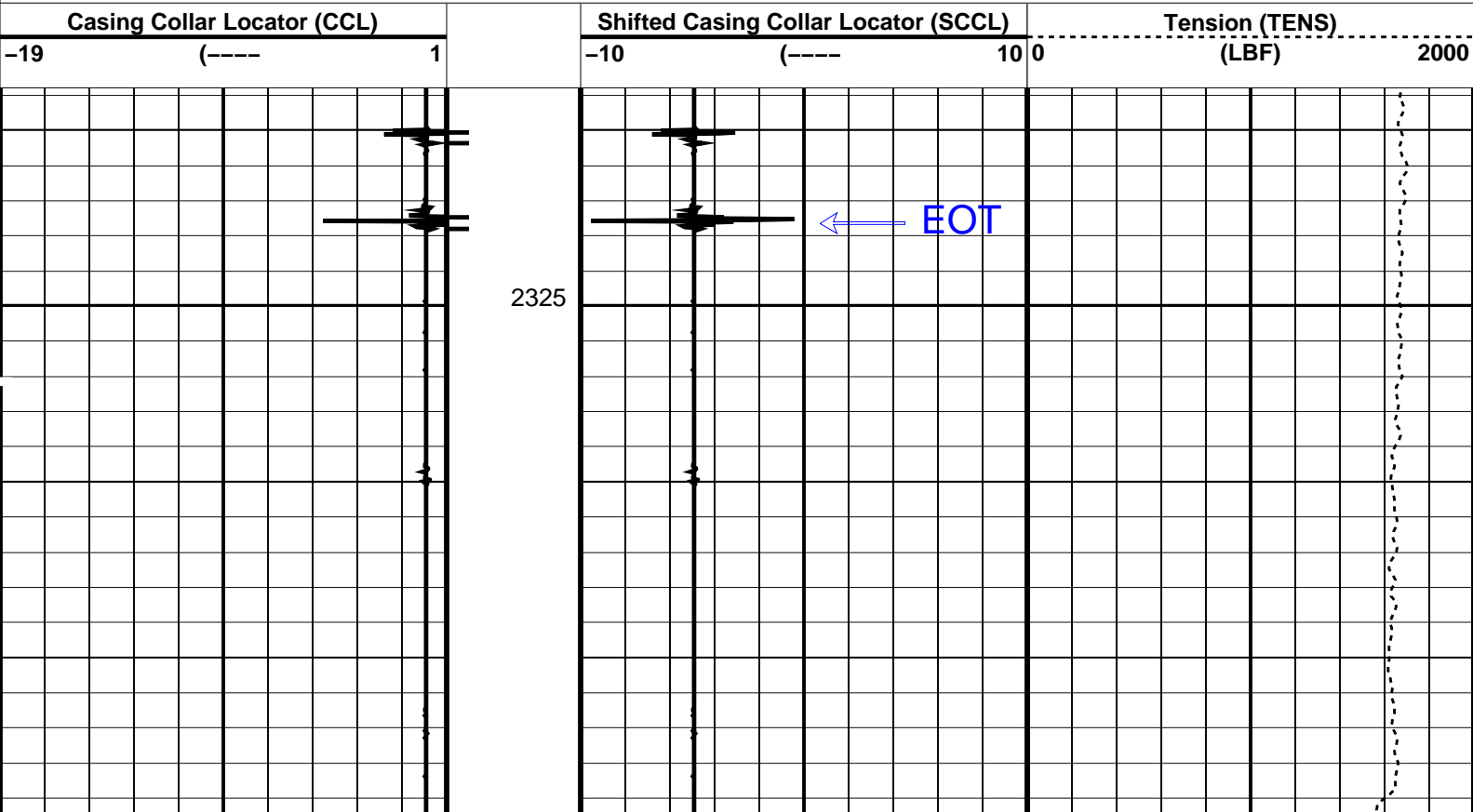
OP System Version: 13C0-300
MCM

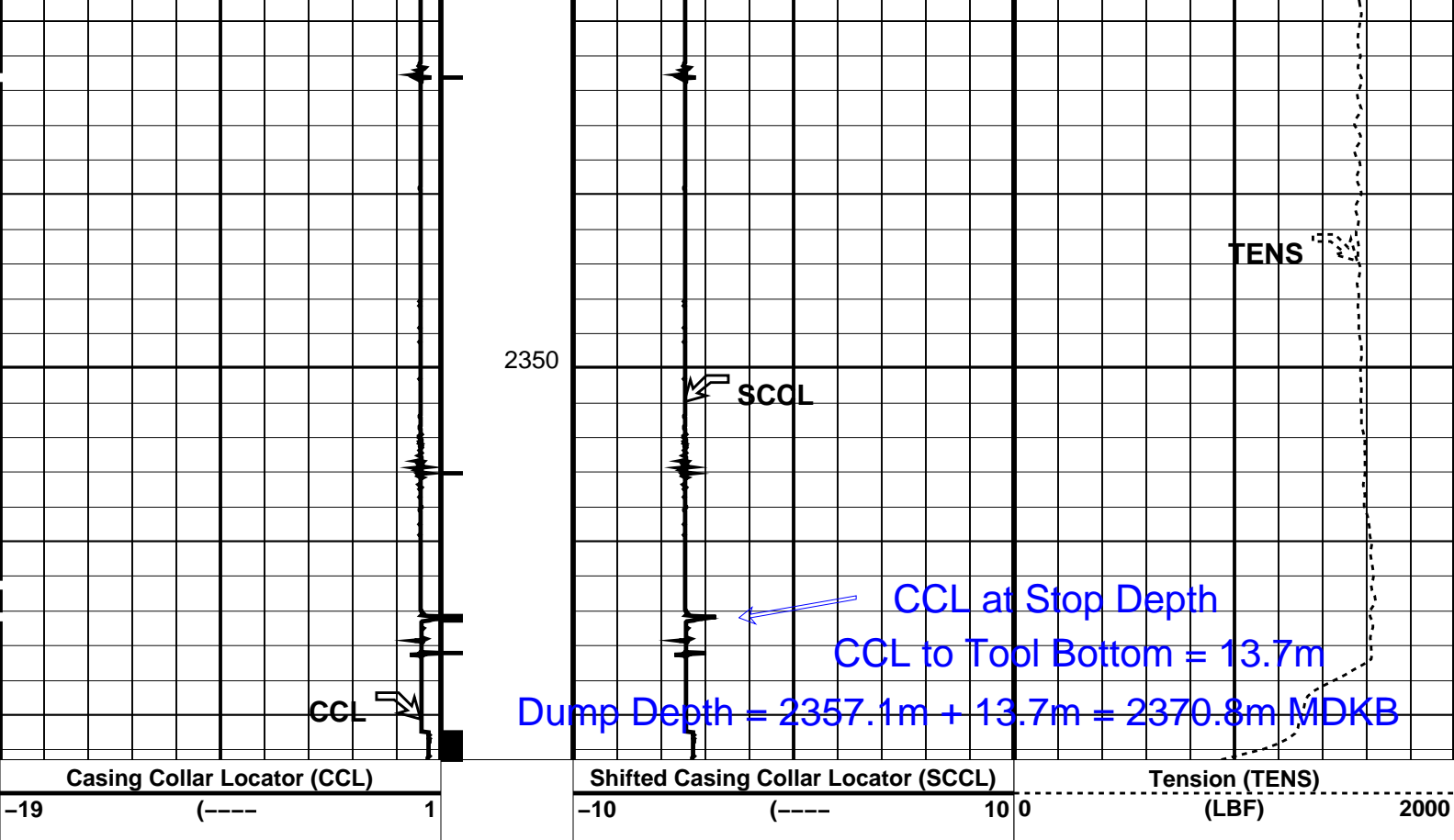
SHM_GUN SRC-2820-ASFS-WPP_t CCL-L 13C0-300

PIP SUMMARY

← Casing Collars

Time Mark Every 60 S





PIP SUMMARY

Time Mark Every 60 S

Parameters

DLIS Name	Description	Value
CCLD	CCL-L: Casing Collar Locator	12 IN
CCLT	CCL reset delay	0.3 V
DO	CCL Detection Level	3.0 M
PP	System and Miscellaneous	NORMAL
	Depth Offset for Playback	
	Playback Processing	

Format: PERFO Vertical Scale: 1:200 Graphics File Created: 31-Oct-2005 16:38

OP System Version: 13C0-300

MCM

SHM_GUN SRC-2820-ASFS-WPP_t CCL-L 13C0-300

Input DLIS Files

DEFAULT PERFO_035LUP FN:34 PRODUCER 31-Oct-2005 16:30 2358.2 M 2315.3 M

Output DLIS Files

DEFAULT PERFO_037PUP FN:36 PRODUCER 31-Oct-2005 16:38

Schlumberger

Cement Dump Bailer
Run 1 – Water

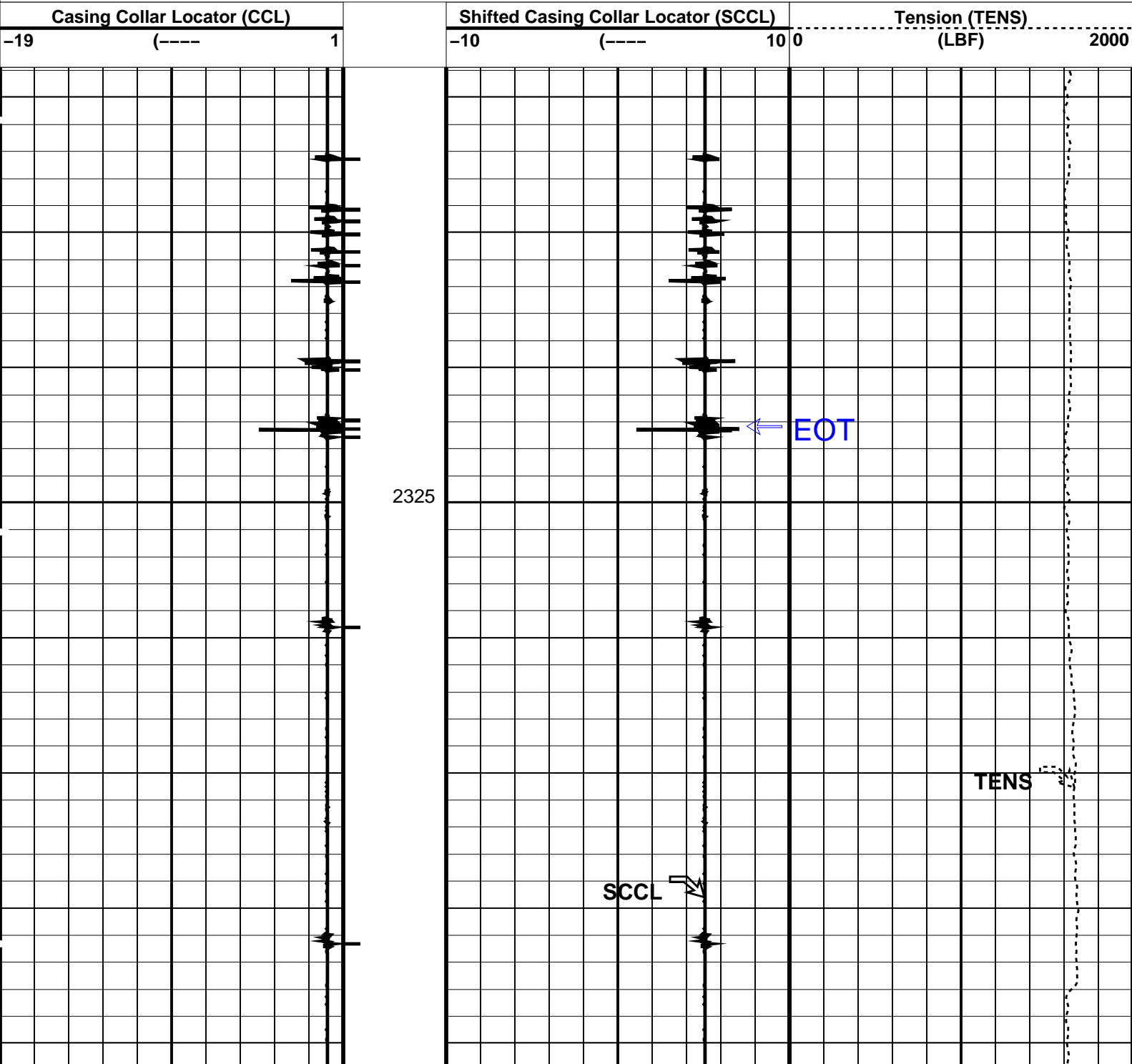
Input DLIS Files					
DEFAULT	PERFO_032LUP	FN:31	PRODUCER	31-Oct-2005 14:32	2361.7 M 2310.4 M
Output DLIS Files					
DEFAULT	PERFO_034PUP	FN:33	PRODUCER	31-Oct-2005 16:03	2359.8 M 2308.9 M

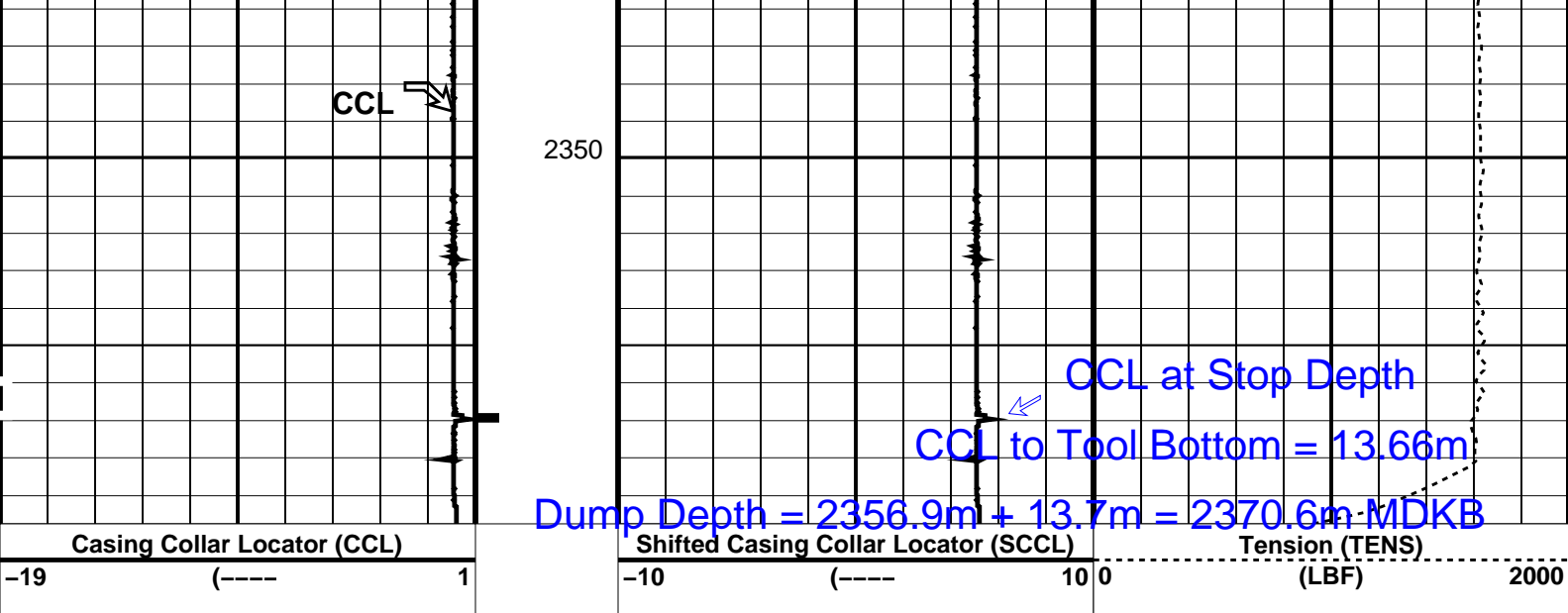
OP System Version: 13C0-300					
MCM					
SHM_GUN	SRC-2820-ASF5-WPP_t	CCL-L	13C0-300		

PIP SUMMARY

Time Mark Every 60 S

Casing Collars





PIP SUMMARY

Time Mark Every 60 S


Parameters		
DLIS Name	Description	Value
CCLD	CCL-L: Casing Collar Locator	12 IN
CCLT	CCL reset delay	0.3 V
DO	CCL Detection Level	-2.0 M
PP	System and Miscellaneous	NORMAL
	Depth Offset for Playback	
	Playback Processing	

Format: PERFO Vertical Scale: 1:200 Graphics File Created: 31-Oct-2005 16:03

OP System Version: 13C0-300			
MCM			
SHM_GUN	SRC-2820-ASFS-WPP_t	CCL-L	13C0-300

Input DLIS Files					
DEFAULT	PERFO_032LUP	FN:31	PRODUCER	31-Oct-2005 14:32	2361.7 M 2310.4 M

Output DLIS Files					
DEFAULT	PERFO_034PUP	FN:33	PRODUCER	31-Oct-2005 16:03	



7" MPBT Plug
Setting Pass

MAXIS Field Log

Output DLIS Files					
DEFAULT	CCL_025LUP	FN:24	PRODUCER	31-Oct-2005 11:49	12192.0 M 11760.9 M

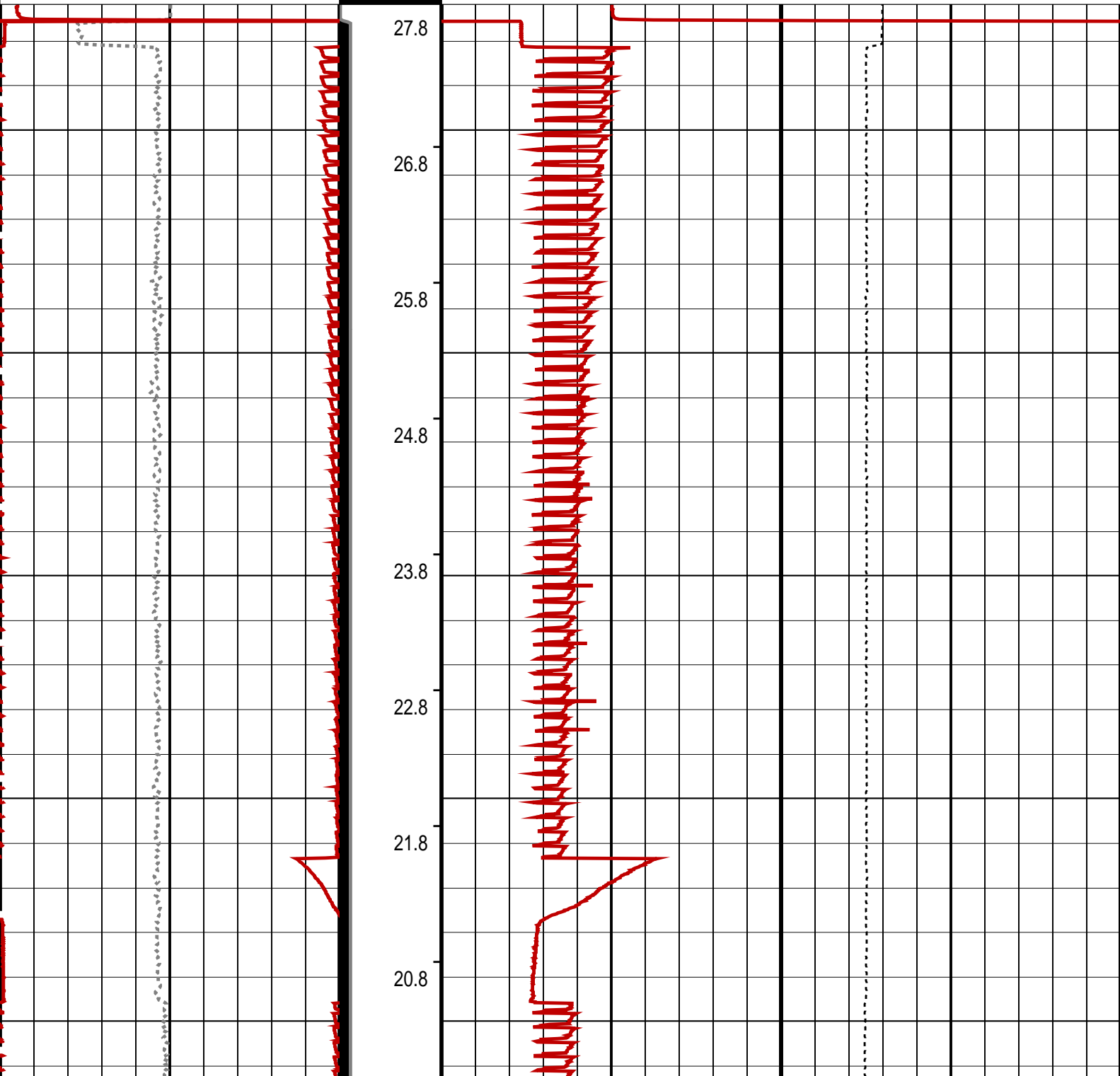
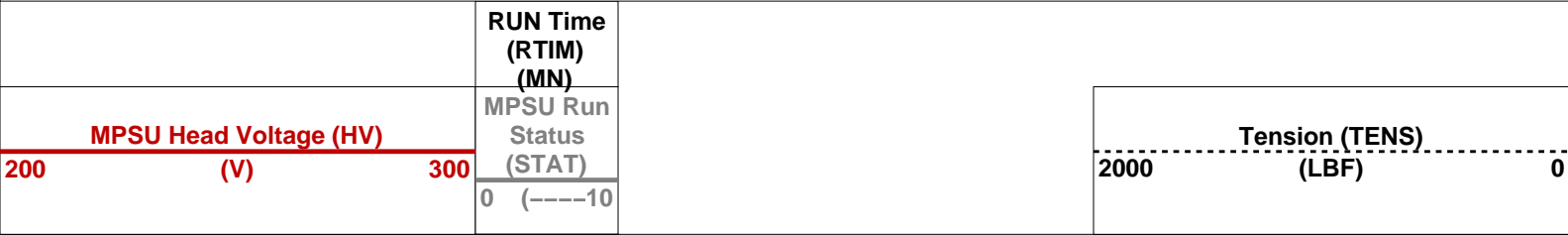
OP System Version: 13C0-300			
MCM			

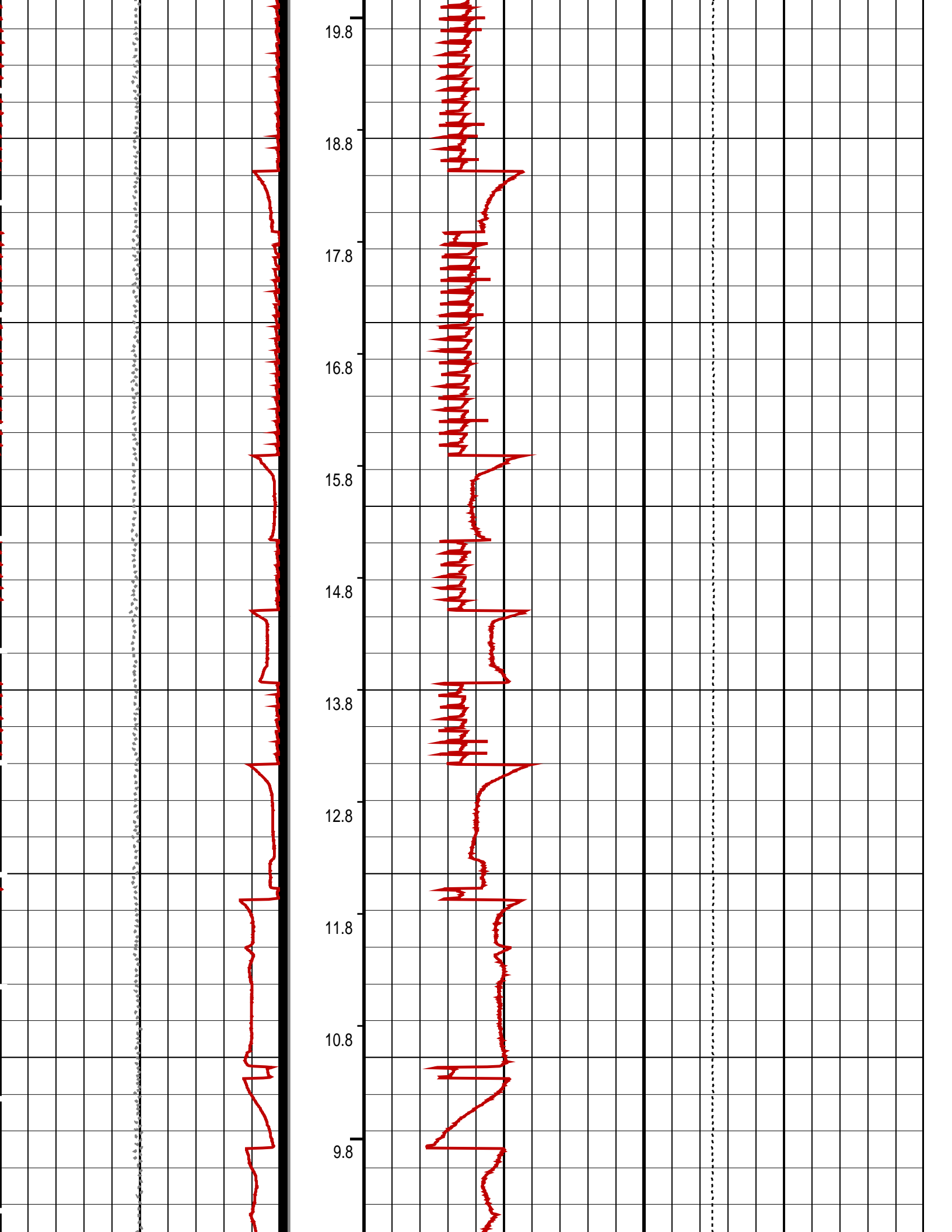
PIP SUMMARY

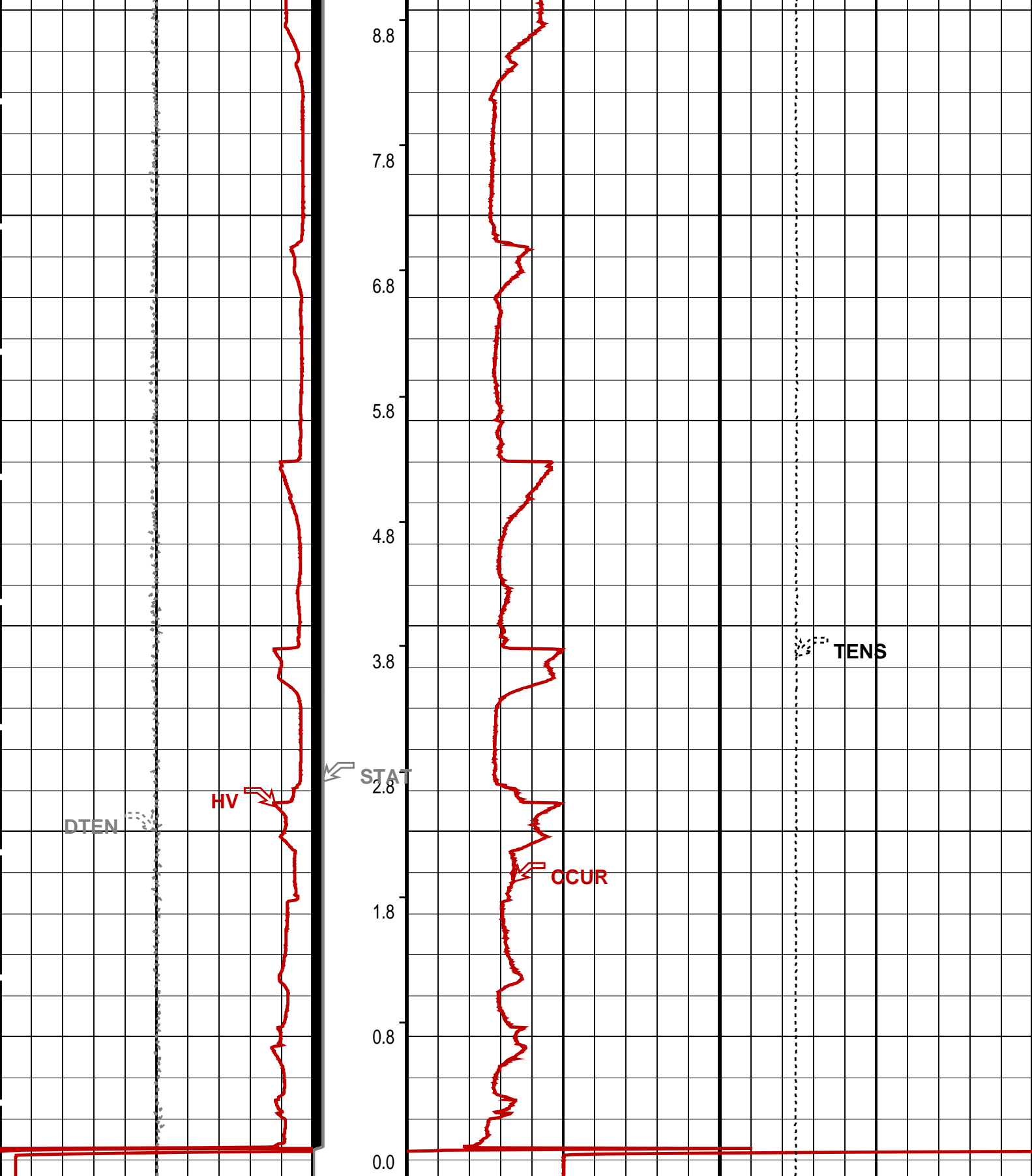
↳ MPSU Run Time Every 1 MN

↳ MPSU Run Time Every 10 MN

Time Mark Every 60 S







Differential Tension (DTEN) (LBF)	ON/Int From D3T to STAT	MPBM Cable Current (CCUR) (MA)
-200 200		300 700
MPSU Head Voltage (HV) (V)	MPSU Run Status (STAT)	Tension (TENS) (LBF)
200 300	0 (----10)	2000 0
	RUN Time	

PIP SUMMARY

⌄ MPSU Run Time Every 1 MN

⌄ MPSU Run Time Every 10 MN

Time Mark Every 60 S

Parameters		
DLIS Name	Description	Value
MPSU-CA: MECHANICAL PLUGBACK SETTING UNIT IPUMP	Intensifier Pump	TRUE
Format: MPBT	Vertical Scale: 1:600	Graphics File Created: 31-Oct-2005 11:49

OP System Version: 13C0-300

MCM

MPEX-EA_S SRC-2820-ASFS-WPP_1 MPSU-CA SRC-2820-ASFS-WPP_1

CCL-L 13C0-300

Output DLIS Files		
DEFAULT	CCL_025LUP	FN:24 PRODUCER 31-Oct-2005 11:49

Schlumberger

7" MPBT Plug
Correlation Pass

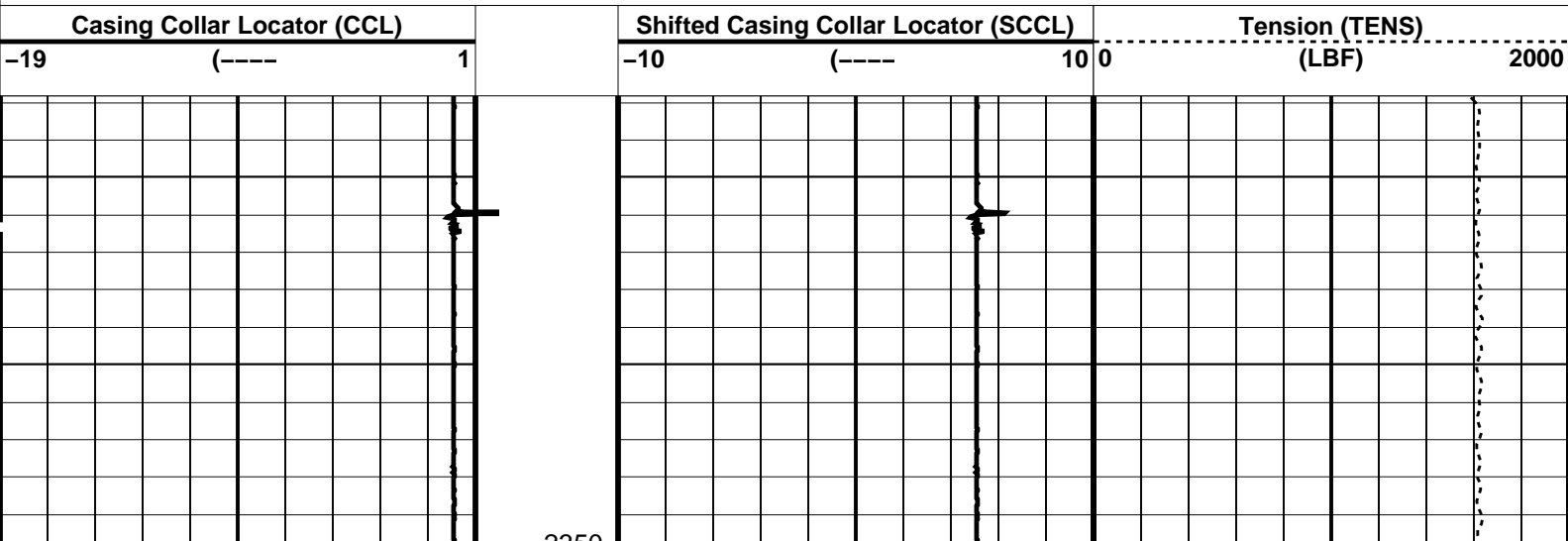
MAXIS Field Log

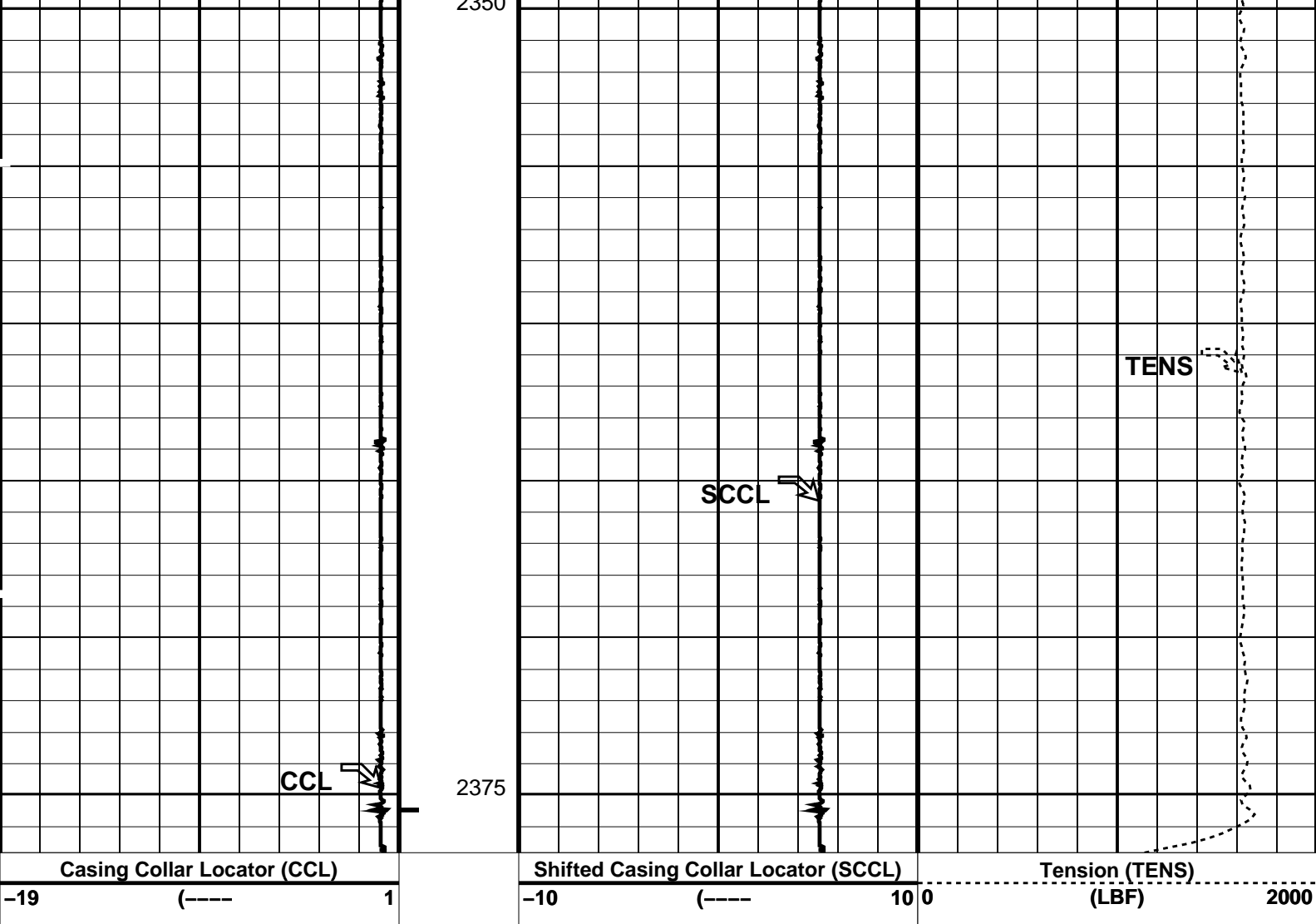
Output DLIS Files		
DEFAULT	CCL_024LUP	FN:23 PRODUCER 31-Oct-2005 11:41 2376.8 M 2337.8 M
OP System Version: 13C0-300		
MCM		
MPEX-EA_S	SRC-2820-ASFS-WPP_1	MPSU-CA SRC-2820-ASFS-WPP_1
CCL-L	13C0-300	

PIP SUMMARY

⌄ Casing Collars

Time Mark Every 60 S





PIP SUMMARY

Time Mark Every 60 S

Parameters

DLIS Name	Description	Value
CCL-L: Casing Collar Locator		
CCLD	CCL reset delay	12 IN
CCLT	CCL Detection Level	0.3 V

Format: PERFO Vertical Scale: 1:200 Graphics File Created: 31-Oct-2005 11:41

OP System Version: 13C0-300

MCM

MPEX-EA_S SRC-2820-ASFS-WPP_t MPSU-CA SRC-2820-ASFS-WPP_t
CCL-L 13C0-300

Output DLIS Files

DEFAULT CCL_024LUP FN:23 PRODUCER 31-Oct-2005 11:41

Company: ExxonMobil

Schlumberger

Well: TNA A-12

Field: Tuna

Rig: Prod 4

Country: Australia

2 1/8" Enerjet Gun
7 " MPBT Plug
Dump Bailer Record