



Company: ExxonMobil

Well: TNA A-6L

Field: Tuna

Rig: Prod 4

Country: Australia

Dummy Plug  
7" MPBT Plug  
Dump Bailer Record

Prod 4

Tuna

Gippsland Basin

TNA A-6L

ExxonMobil

LOCATION

Gippsland Basin  
Bass Strait

Elev.: K.B. 32.9 m  
G.L. -59 m  
D.F. 31.1 m

Permanent Datum: \_\_\_\_\_  
Log Measured From: \_\_\_\_\_  
Drilling Measured From: \_\_\_\_\_

Mean Sea Level \_\_\_\_\_  
Kelly Bushing \_\_\_\_\_  
Kelly Bushing \_\_\_\_\_

Elev.: 0.0 m  
-32.9 m above Perm. Datum

State: Victoria

Max. Well Deviation  
41 deg

Longitude  
148 418' 0" E

Latitude  
038 171' 0" S

Logging Date	2-Nov-2005		
Run Number	1, 2 & 3		
Depth Driller	3303 m		
Schlumberger Depth	3145 m		
Bottom Log Interval	3145.3 m		
Top Log Interval	3044 m		
Casing Fluid Type	Production Fluids		
Salinity			
Density			
Fluid Level			
BIT/CASING/TUBING STRING			
Bit Size	8.500 in		
From	2218.8 m		
To	3303 m		
Casing/Tubing Size	7.000 in		
Weight	23 lbm/ft		
Grade	K-55		
From	2218.8 m		
To	3277.5 m		
Maximum Recorded Temperatures	203 degC		
Logger On Bottom	2-Nov-2005		14:30
Unit Number	1	VEA	
Recorded By	Paul Tarrant		
Witnessed By	Greg Rimmer		

PVT DATA			
Oil Density	Run 1	Run 2	Run 3
Water Salinity			
Gas Gravity			
Bo			
Bw			
1/Bg			
Bubble Point Pressure			
Bubble Point Temperature			
Solution GOR			
Maximum Deviation	41 deg		
CEMENTING DATA			
Primary/Squeeze	Primary		
Casing String No			
Lead Cement Type			
Volume			
Density			
Water Loss			
Additives			
Tail Cement Type			
Volume			
Density			
Water Loss			
Additives			
Expected Cement Top			
Logging Date			
Run Number			
Depth Driller			
Schlumberger Depth			
Bottom Log Interval			
Top Log Interval			
Casing Fluid Type			
Salinity			
Density			
Fluid Level			
BIT/CASING/TUBING STRING			
Bit Size			
From			
To			
Casing/Tubing Size			
Weight			
Grade			
From			
To			
Maximum Recorded Temperatures			
Logger On Bottom			
Unit Number			
Recorded By			
Witnessed By			

## DEPTH SUMMARY LISTING

Date Created: 3-NOV-2005 7:11:09

## Depth System Equipment

Depth Measuring Device	Tension Device	Logging Cable
Type: IDW-H Serial Number: 797 Calibration Date: 01-May-05 Calibrator Serial Number: 1009 Calibration Cable Type: 2-32ZT Wheel Correction 1: -3 Wheel Correction 2: 2	Type: CMTD-C Serial Number: 1037 Calibration Date: 22-Sep-05 Calibrator Serial Number: 57144 Calibration Gain: 1.29 Calibration Offset: 777.00	Type: 2-32ZT Serial Number: 22372 Length: 4799.99 M Conveyance Method: Wireline Rig Type: Offshore_Fixed

## Depth Control Parameters

Log Sequence:	Subsequent Trip To the Well
Reference Log Name:	PSP Log performed by Schlumberger
Reference Log Run Number:	1
Reference Log Date:	02-Nov-05
Subsequent Trip Down Log Correction:	-50000.00 M

## Depth Control Remarks

1.
2.
3.
4.
5.
6.

## DISCLAIMER

THE USE OF AND RELIANCE UPON THIS RECORDED-DATA BY THE HEREIN NAMED COMPANY (AND ANY OF ITS AFFILIATES, PARTNERS, REPRESENTATIVES, AGENTS, CONSULTANTS AND EMPLOYEES) IS SUBJECT TO THE TERMS AND CONDITIONS AGREED UPON BETWEEN SCHLUMBERGER AND THE COMPANY, INCLUDING: (a) RESTRICTIONS ON USE OF THE RECORDED-DATA; (b) DISCLAIMERS AND WAIVERS OF WARRANTIES AND REPRESENTATIONS REGARDING COMPANY'S USE OF AND RELIANCE UPON THE RECORDED-DATA; AND (c) CUSTOMER'S FULL AND SOLE RESPONSIBILITY FOR ANY INFERENCE DRAWN OR DECISION MADE IN CONNECTION WITH THE USE OF THIS RECORDED-DATA.

OTHER SERVICES1
OS1: None
OS2:
OS3:
OS4:
OS5:
REMARKS: RUN NUMBER 1
Log correlated to Solar log, dated , provided by client
Objective:
RIH with a dummy plug to obtain HUD, pressure and temperature.
HUD = 3145.3m MDKB, Pressure = 2800psi , Temp = 200degC
Set MPBT plug at 3106m MDKB.
CCL to Bottom of Tool = 6.6m
Bottom of Tool to Top Seal = 0.6m

RIH with 40ft Dump Bailer, 1st run with water the 2nd with cement, giving 1.1m of cement on top of plug.

Performed by Schlumberger

<p>RUN 1</p> <p>PROGRAM VERSION: 46000447</p> <p>FLUID LEVEL: 13C0-300</p>			<p>RUN 2</p> <p>PROGRAM VERSION:</p> <p>FLUID LEVEL:</p>		
LOGGED INTERVAL	START	STOP	LOGGED INTERVAL	START	STOP

RUN 2

MPBM 81	SURFACE EQUIPMENT	WITM (SHM)	SURFACE EQUIPMENT
---------	-------------------	------------	-------------------

DOWNHOLE EQUIPMENT		DOWNHOLE EQUIPMENT	
AH-SWBS AH-SWBS 761	11.03	AH-SWBS	14.84
AH-SWBS AH-SWBS 762	10.73	AH-SWBS	14.53
AH-SWBS AH-SWBS 763	10.42	AH-SWBS	14.23
MH-SWHS MH-SWHS 726	10.12	MH-SWHS MH-SWHS 753	13.92
CCL-L CCL-L 4195	9.64	CCL-L CCL-L 4195	13.44
MPSU-CA MPSU-CA 1102	9.18	AH-DB-TT AH-DB-TT	12.98

2.77

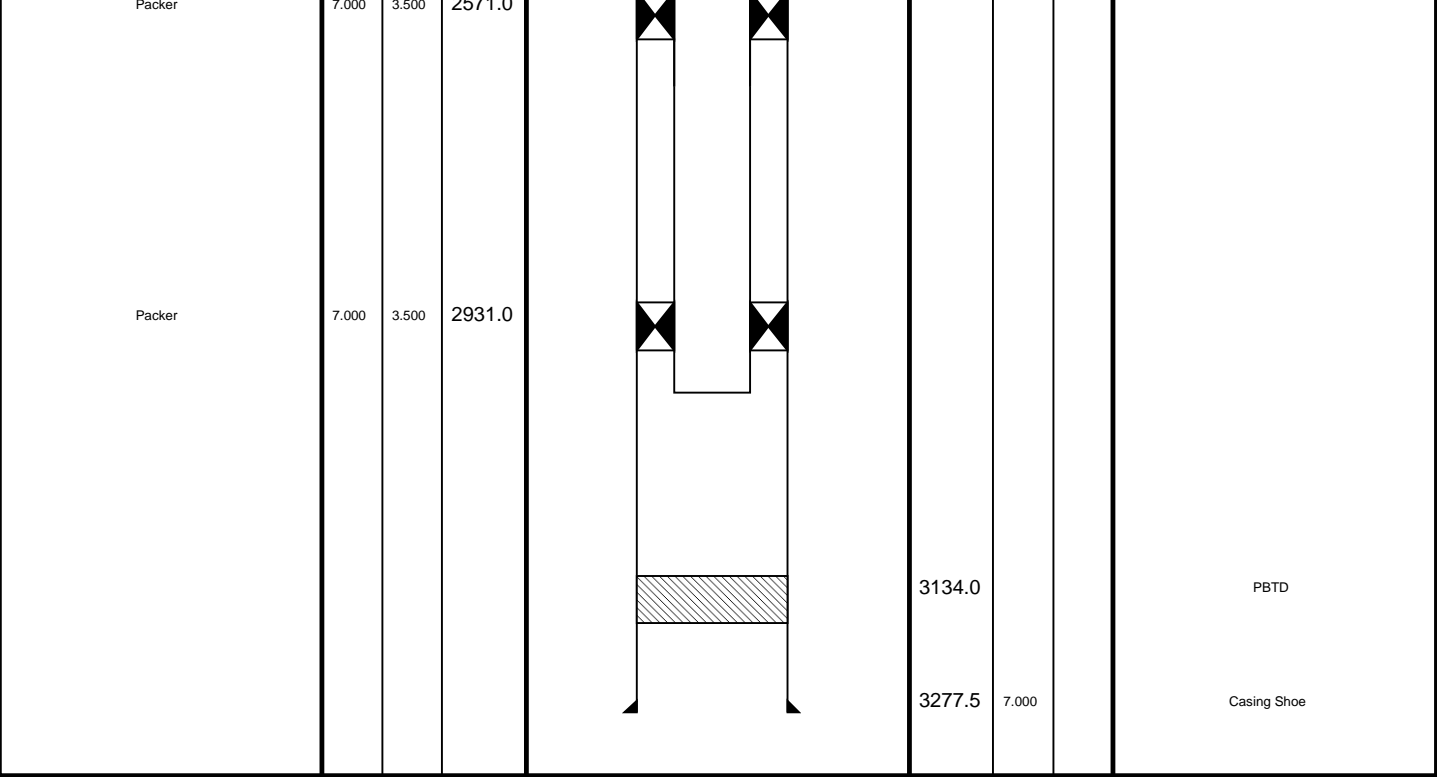
MAXIMUM STRING DIAMETER 2.13 IN  
MEASUREMENTS RELATIVE TO TOOL ZERO  
ALL LENGTHS IN METERS

0.79

MAXIMUM STRING DIAMETER 2.13 IN  
MEASUREMENTS RELATIVE TO TOOL ZERO  
ALL LENGTHS IN METERS

Rig Name:	Tuna
Reference Datum:	Kelly Bushing
Elevation:	32.9 m

Production String	(in)		(m)	Well Schematic	(m)		(in)	Casing String
	OD	ID	MD		MD	OD	ID	
Tubing Bagger	13.500	2.950	13.6		13.6	13.500	2.950	Casing String Liner Hanger
Shutin Valve	3.500		451.0					
Nipple	3.500		1376.0					
Gas Lift Mandrel	3.500		1381.0					
Packer	7.000	3.500	2142.0					
	2318.0	9.625	2571.0					Casing Shoe



Dump Bailer  
Run 2 – Cement

MAXIS Field Log

Output DLIS Files

DEFAULT PERFO\_033LUP FN:32 PRODUCER 04-Nov-2005 09:59 3095.2 M 3057.8 M

OP System Version: 13C0-300  
MCM

SHM\_GUN SRC-2820-ASFS-WPP\_t CCL-L 13C0-300

PIP SUMMARY

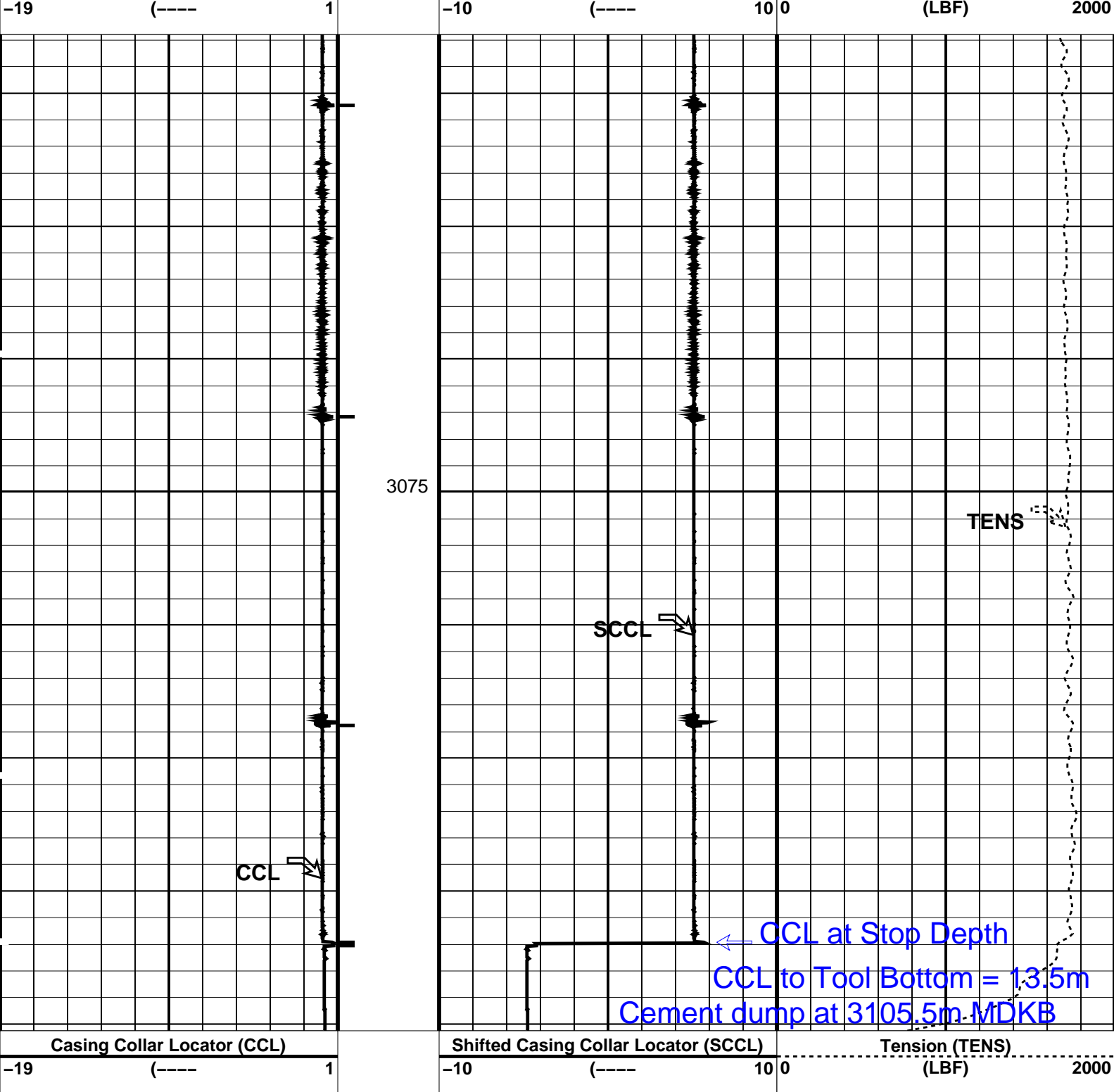
Time Mark Every 60 S



Casing Collar Locator (CCL)

Shifted Casing Collar Locator (SCCL)

Tension (TENS)




PIP SUMMARY

Time Mark Every 60 S

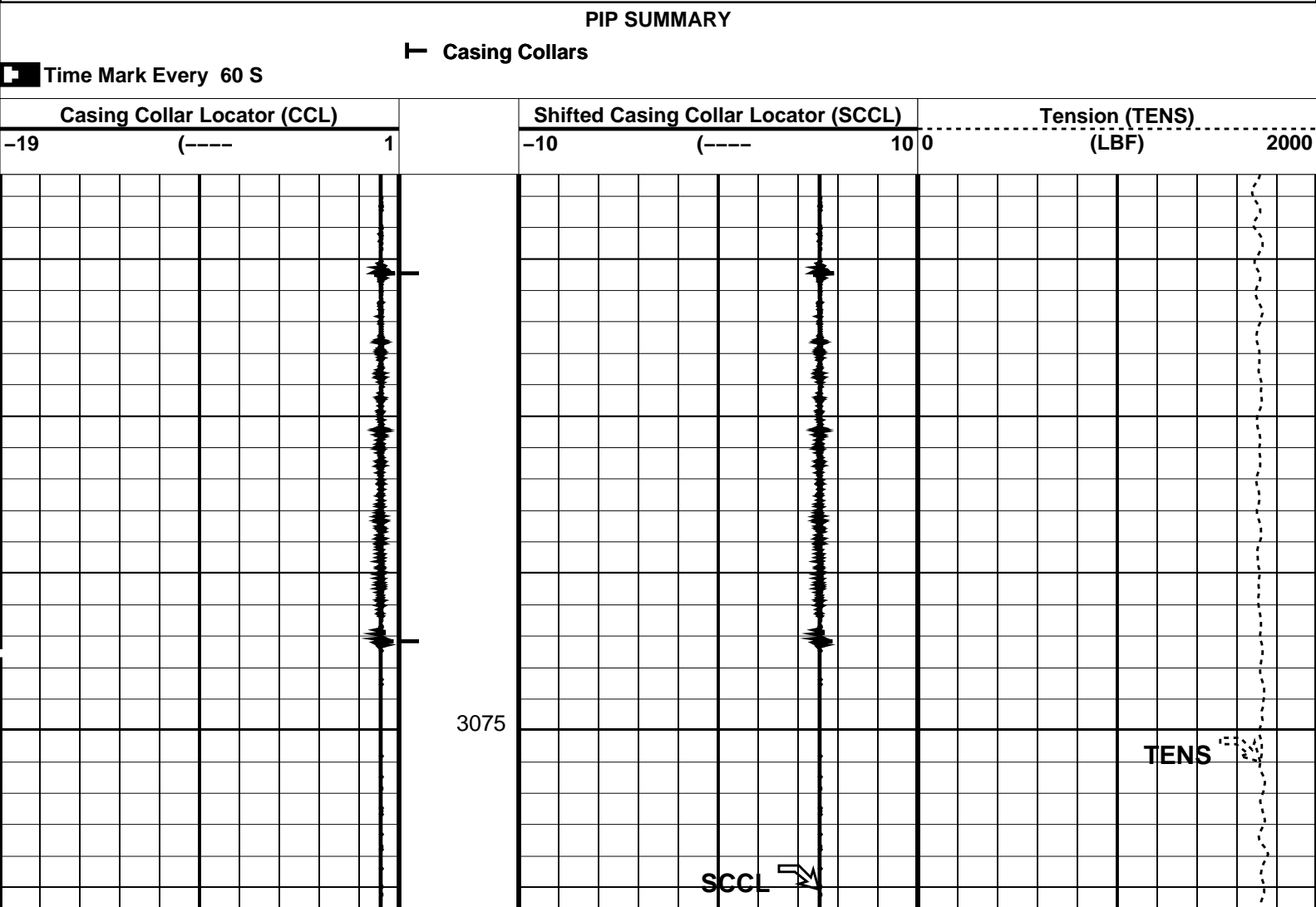
Parameters		
DLIS Name	Description	Value
CCLD	CCL-L: Casing Collar Locator	12 IN
CCLT	CCL reset delay	0.3 V
	CCL Detection Level	

Format: PERFO Vertical Scale: 1:200 Graphics File Created: 04-Nov-2005 09:59

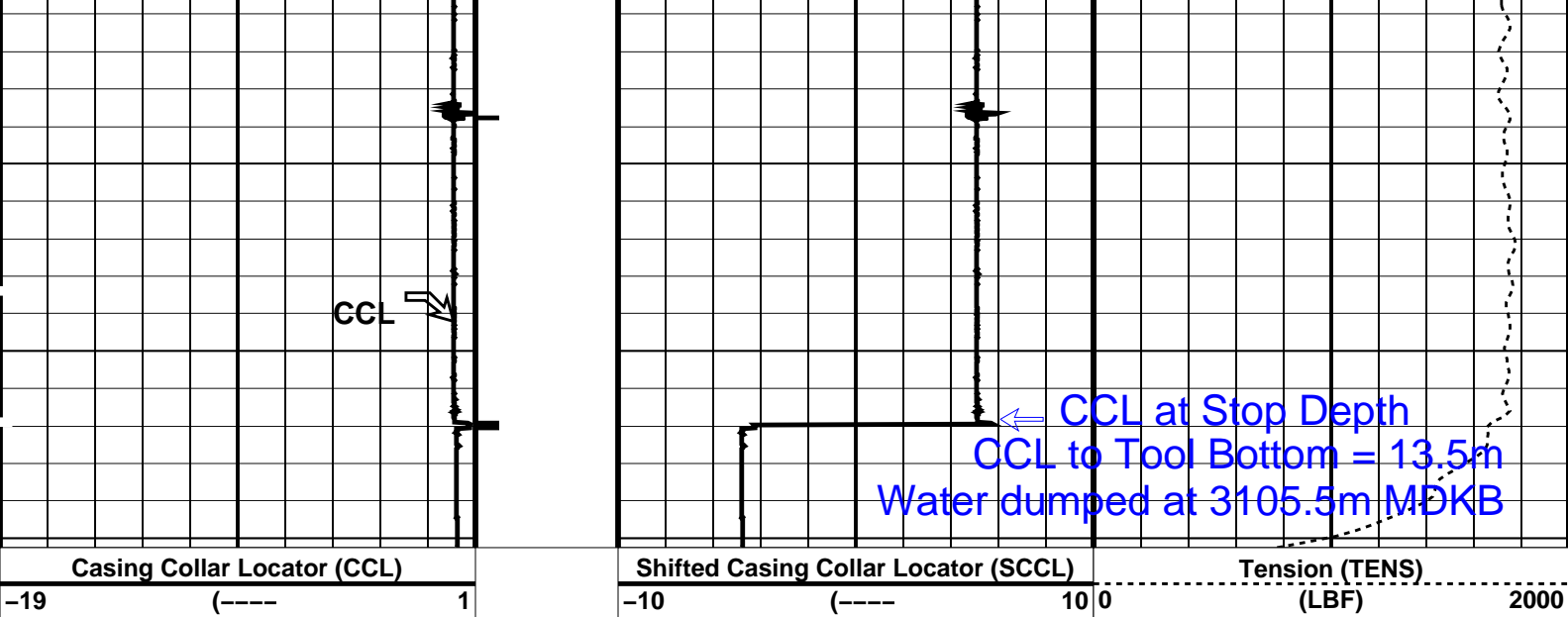


Dump Bailer  
Run 1 – Water

MAXIS Field Log







#### PIP SUMMARY

Time Mark Every 60 S

#### Parameters

DLIS Name	Description	Value
CCL-L: Casing Collar Locator		
CCLD	CCL reset delay	12 IN
CCLT	CCL Detection Level	0.3 V

Format: PERFO Vertical Scale: 1:200 Graphics File Created: 04-Nov-2005 08:06

#### OP System Version: 13C0-300

MCM

SHM\_GUN SRC-2820-ASFS-WPP\_t CCL-L 13C0-300

#### Output DLIS Files

DEFAULT PERFO\_025LUP FN:24 PRODUCER 04-Nov-2005 08:06

Schlumberger

7" MPBT Plug  
Setting Pass

MAXIS Field Log

#### Output DLIS Files

DEFAULT CCL\_021LUP FN:20 PRODUCER 03-Nov-2005 15:54

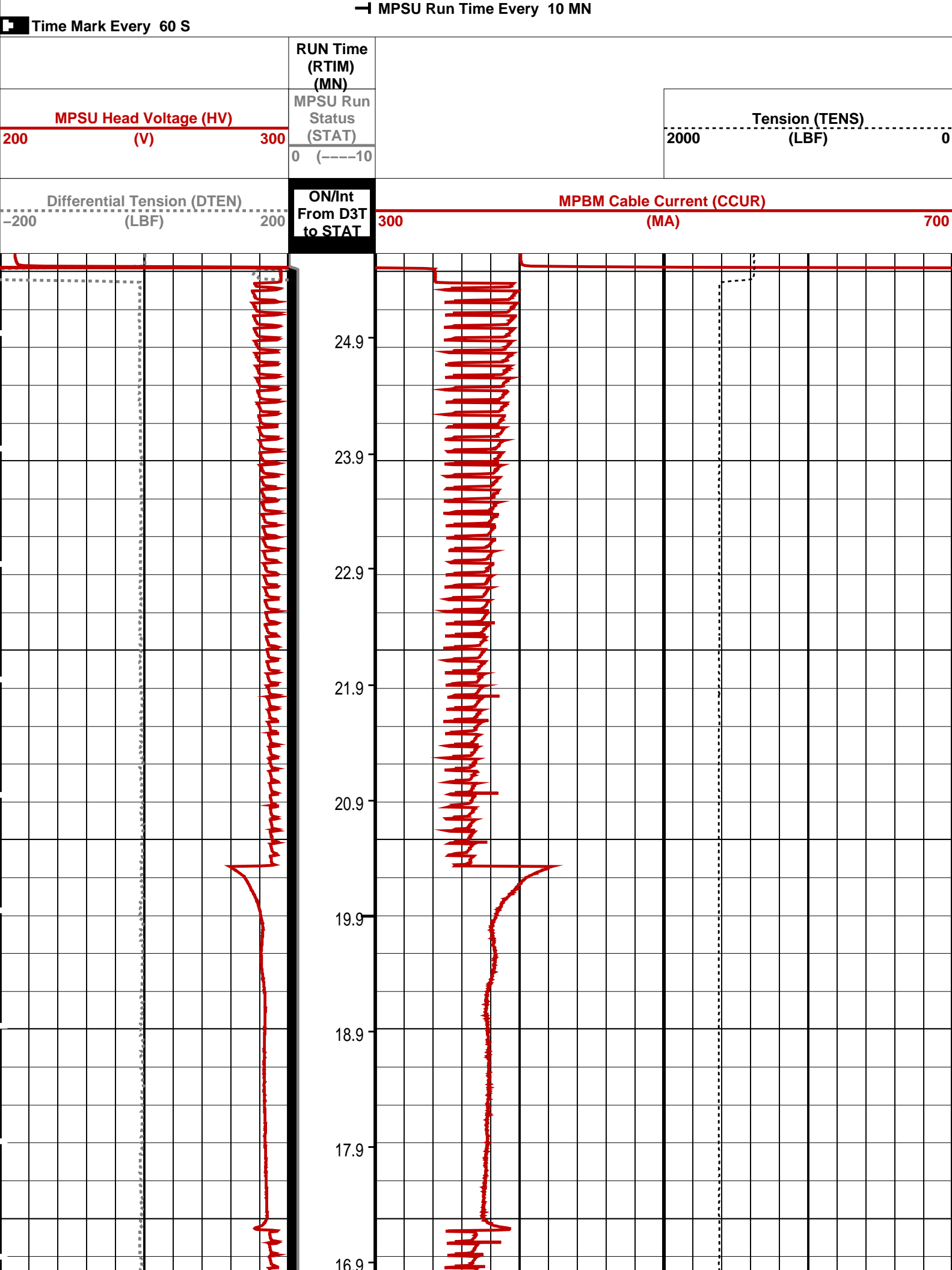
#### OP System Version: 13C0-300

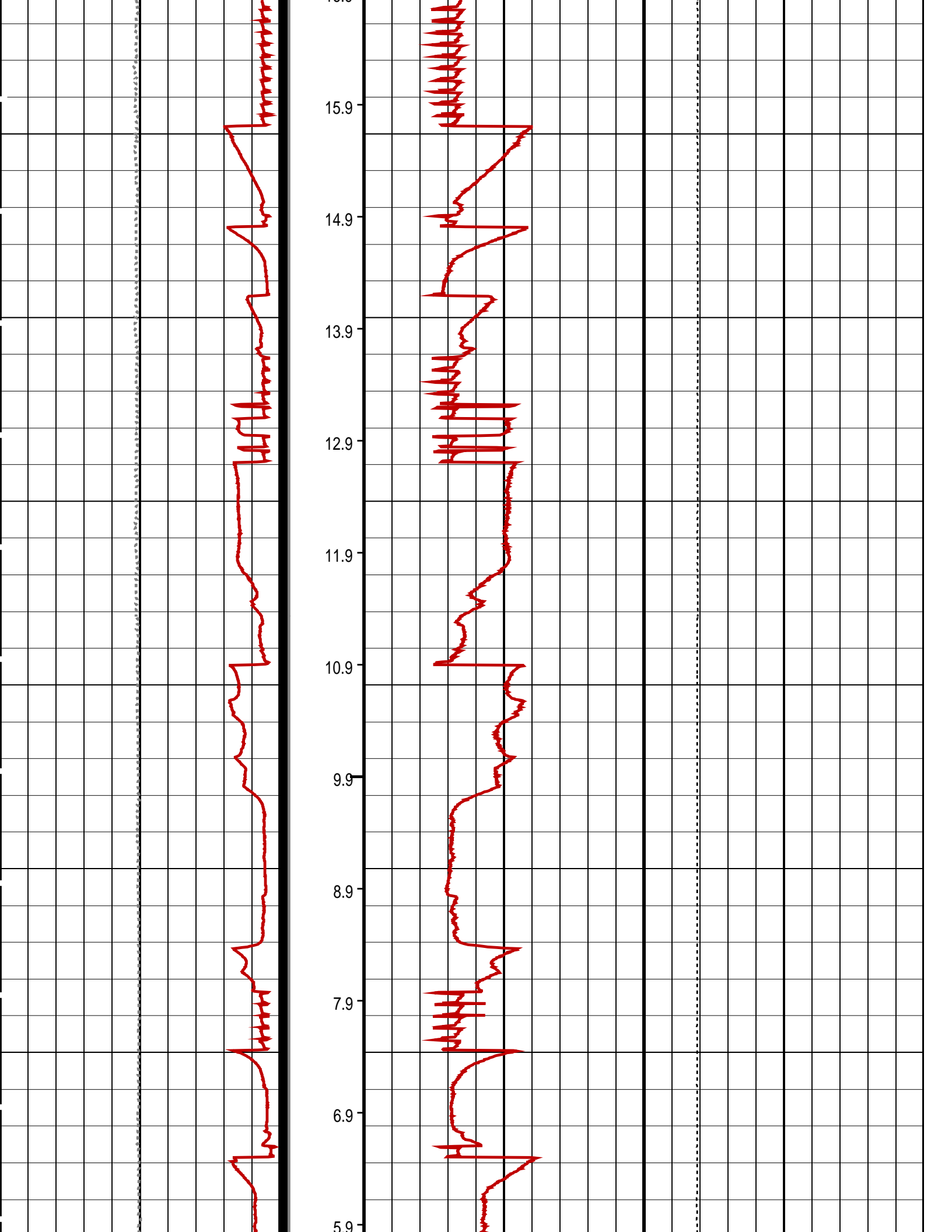
MCM

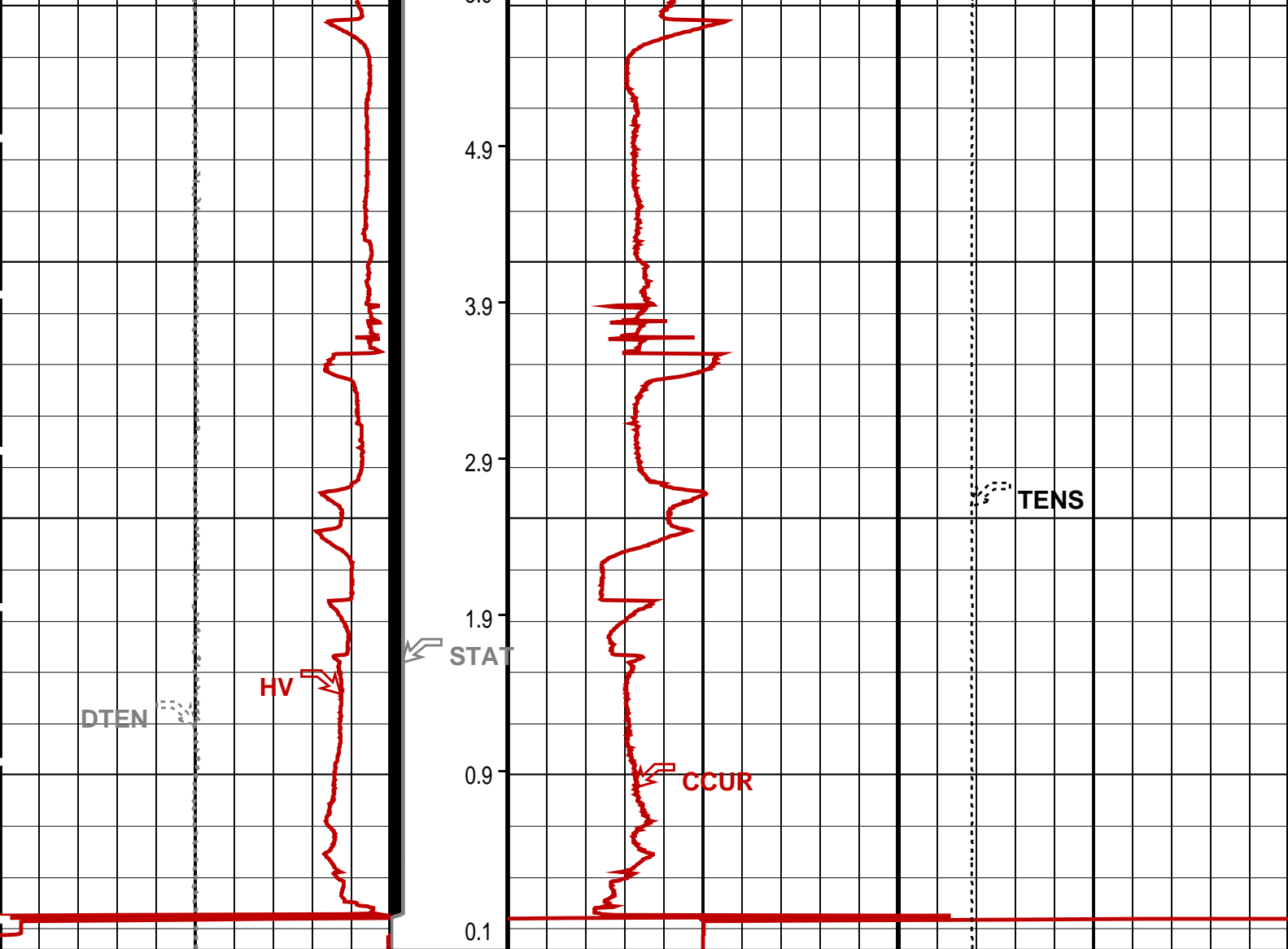
MPEX-EA\_S SRC-2820-ASFS-WPP\_t MPSU-CA SRC-2820-ASFS-WPP\_t  
CCL-L 13C0-300

#### PIP SUMMARY

MPSU Run Time Every 1 MN







Differential Tension (DTEN) (LBF)	ON/Int From D3T to STAT	MPBM Cable Current (CCUR) (MA)
-200 200		300 700
MPSU Head Voltage (HV) (V)	MPSU Run Status (STAT)	Tension (TENS) (LBF)
200 300	0 (----10)	2000 0
	RUN Time (RTIM) (MN)	

PIP SUMMARY

- ⊥ MPSU Run Time Every 1 MN
- MPSU Run Time Every 10 MN

Time Mark Every 60 S

Parameters

DLIS Name	Description	Value
IPUMP	MPSU-CA: MECHANICAL PLUGBACK SETTING UNIT Intensifier Pump	TRUE

Format: MPBT Vertical Scale: 1:600 Graphics File Created: 03-Nov-2005 15:54

OP System Version: 13C0-300  
MCM

MPEX-EA_S CCL-L	SRC-2820-ASFS-WPP_t 13C0-300	MPSU-CA	SRC-2820-ASFS-WPP_t
--------------------	---------------------------------	---------	---------------------

Output DLIS Files



7" MPBT Plug  
Correlation Pass

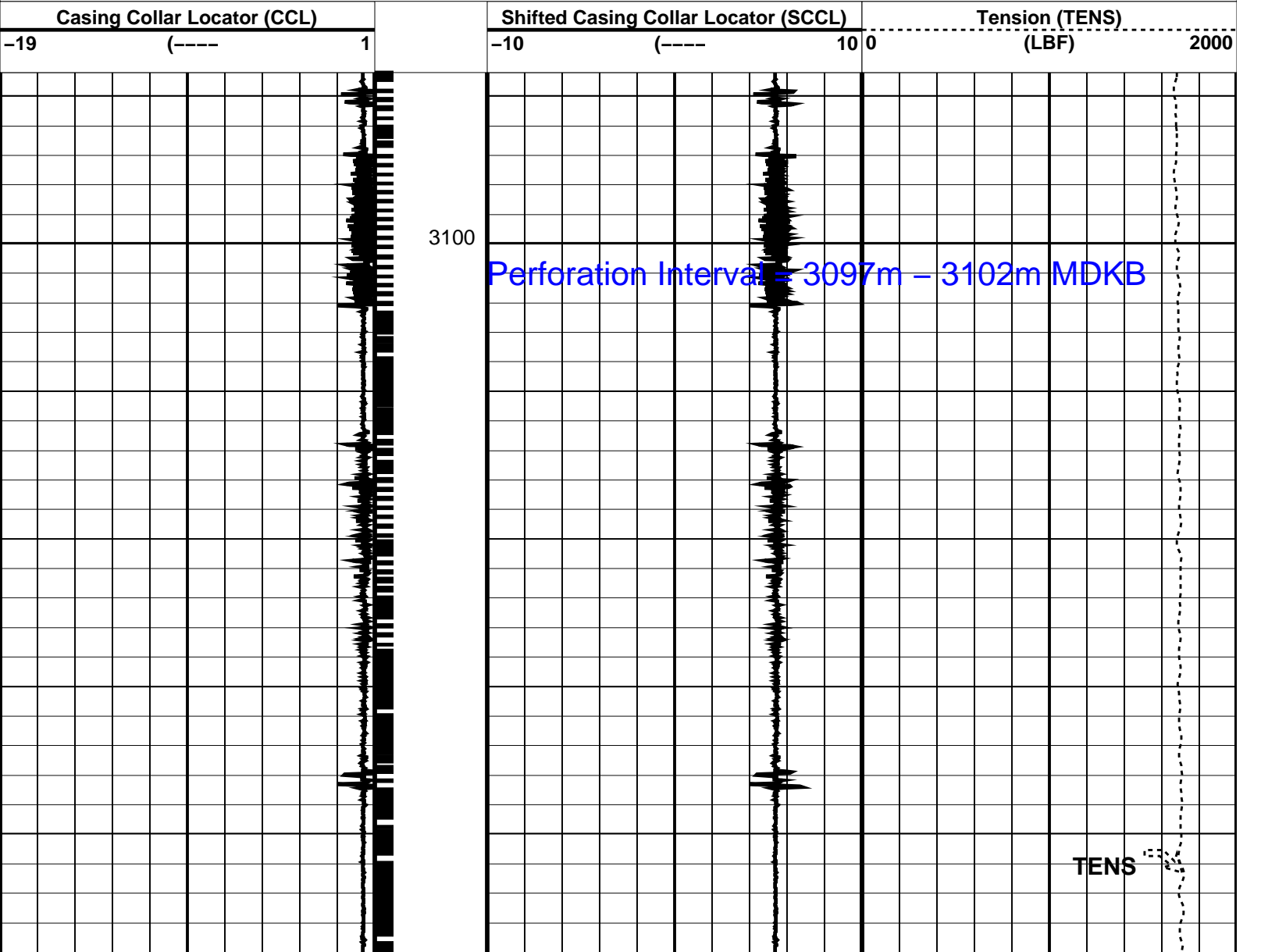
MAXIS Field Log

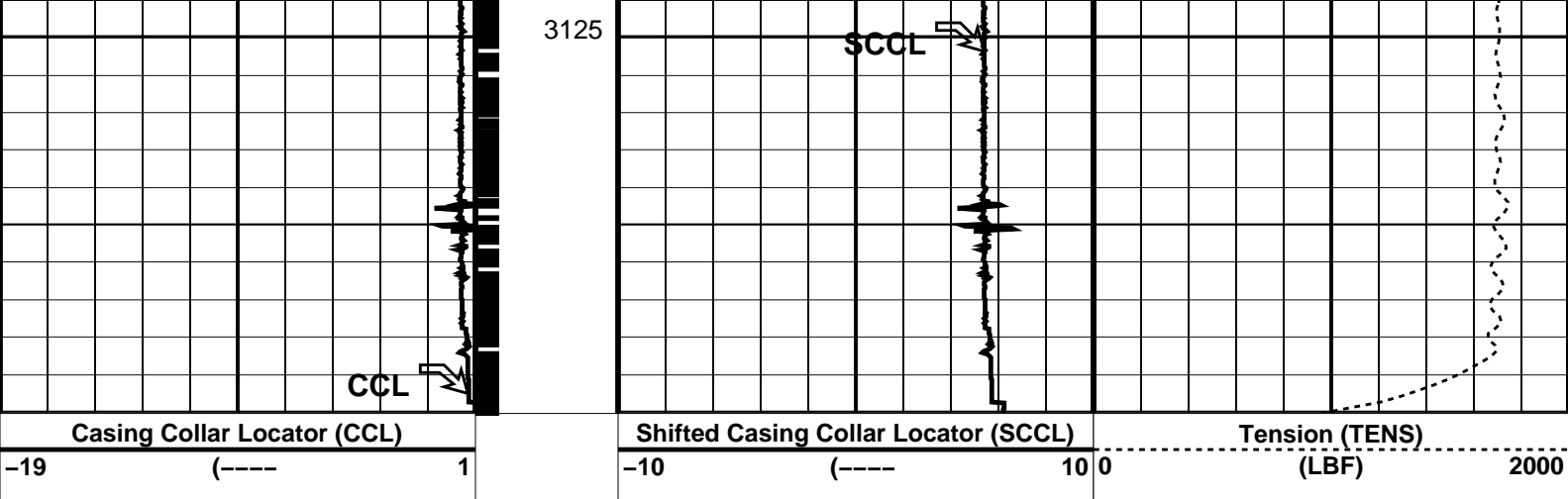
Output DLIS Files

OP System Version: 13C0-300  
MCM

PIP SUMMARY

Casing Collars






PIP SUMMARY  
Casing Collars

Parameters		
DLIS Name	Description	Value
CCL-L: Casing Collar Locator		
CCLD	CCL reset delay	12 IN
CCLT	CCL Detection Level	0.3 V

Format: PERFO Vertical Scale: 1:200 Graphics File Created: 03-Nov-2005 15:45

OP System Version: 13C0-300			
MCM			
MPEX-EA_S	SRC-2820-ASFS-WPP_t	MPSU-CA	SRC-2820-ASFS-WPP_t
CCL-L	13C0-300		

Output DLIS Files			
DEFAULT	CCL_018LUP	FN:17	PRODUCER 03-Nov-2005 15:45



MPBT Dummy Plug  
Correlation Pass

MAXIS Field Log

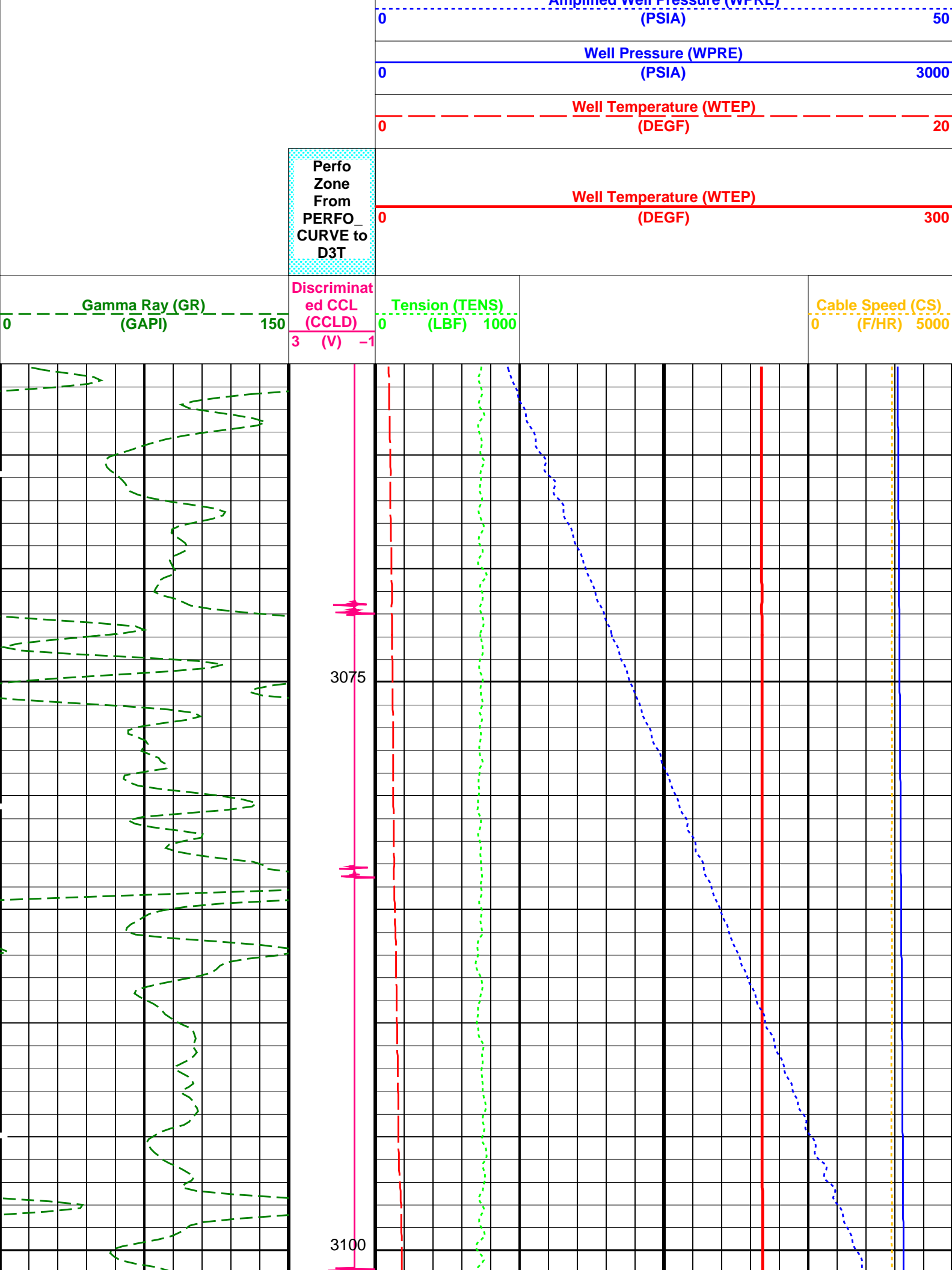
Company: ExxonMobil Well: TNA A-6L

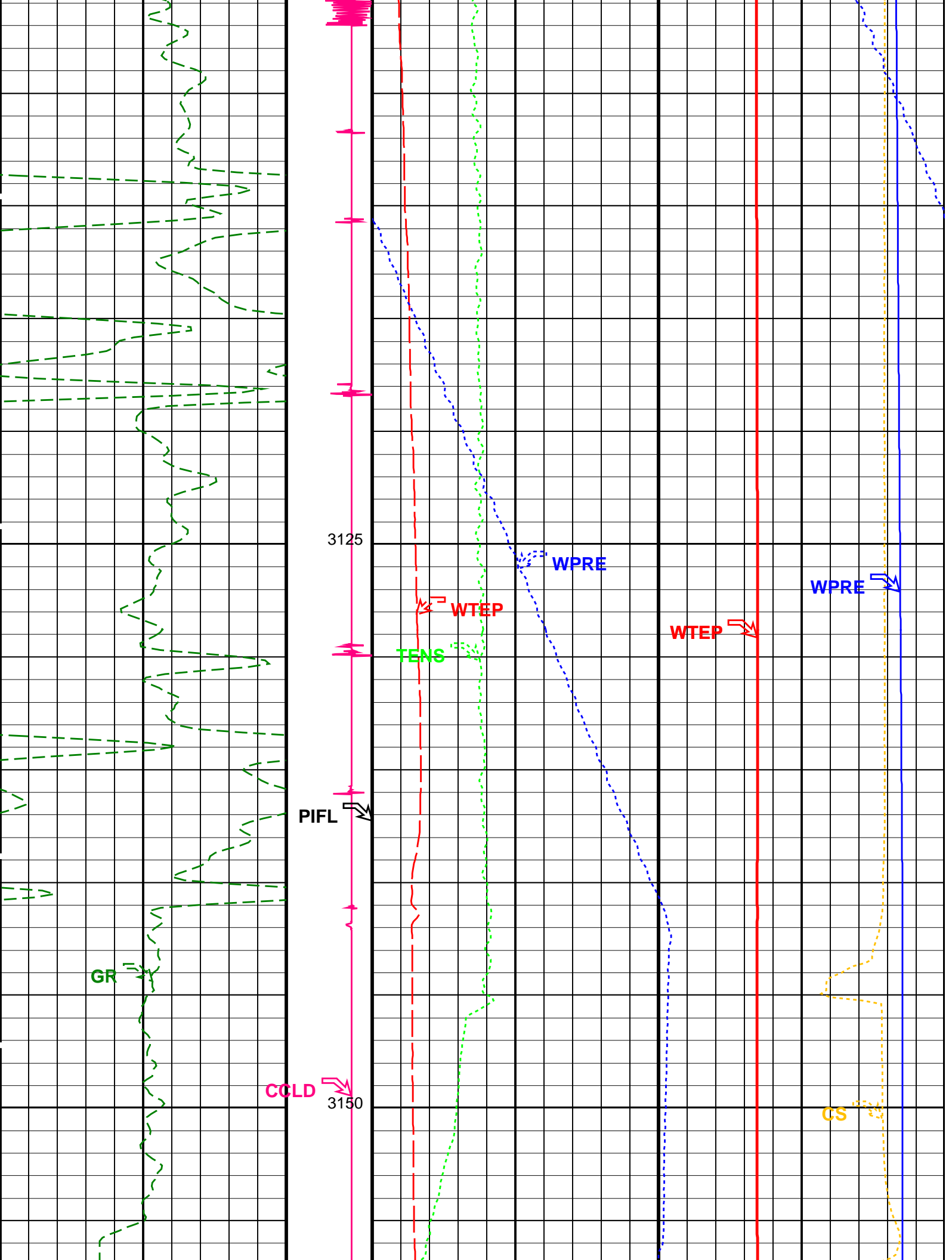
Input DLIS Files					
DEFAULT	PSP_010LUP	FN:9	PRODUCER	02-Nov-2005 16:49	3143.1 M 3044.0 M
Output DLIS Files					
DEFAULT	PSP_011PUP	FN:10	PRODUCER	02-Nov-2005 16:59	3159.6 M 3061.0 M

OP System Version: 13C0-300	
MCM	
PSPT-A/B	13C0-300

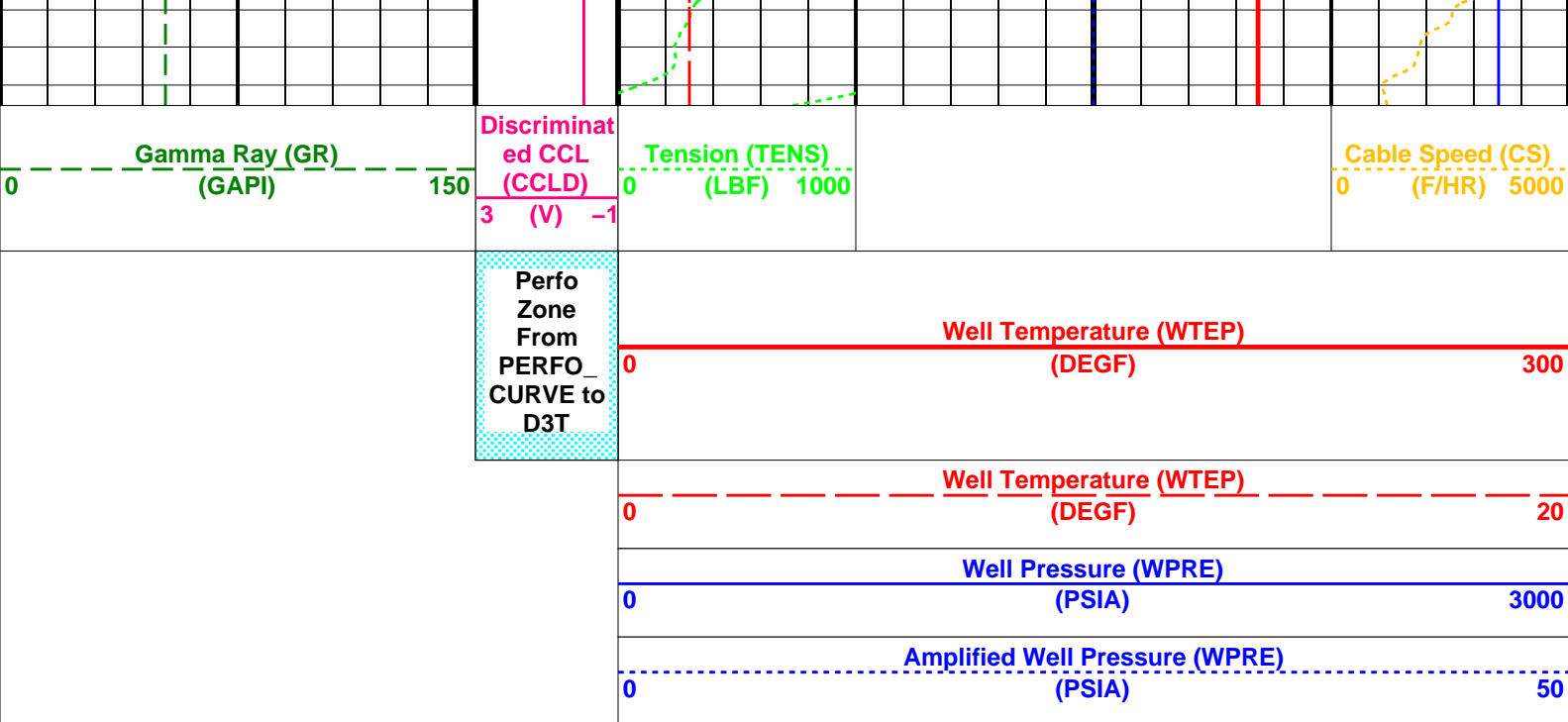
PIP SUMMARY  
Time Mark Every 60 S

Amplified Well Pressure (WPPE)









PIP SUMMARY

Time Mark Every 60 S

Format: PSP\_1 Vertical Scale: 1:200 Graphics File Created: 02-Nov-2005 16:59

OP System Version: 13C0-300  
MCM  
PSPT-A/B 13C0-300

Parameters			
DLIS Name	Description	Value	
DO	System and Miscellaneous	16.4	M
PP	Depth Offset for Playback	NORMAL	
	Playback Processing		

Input DLIS Files						
DEFAULT	PSP_010LUP	FN:9	PRODUCER	02-Nov-2005 16:49	3143.1 M	3044.0 M
Output DLIS Files						
DEFAULT	PSP_011PUP	FN:10	PRODUCER	02-Nov-2005 16:59		

Company: ExxonMobil

Well: TNA A-6L

Field: Tuna

Rig: Prod 4

Country: Australia

Dummy Plug

7" MPBT Plug

Dump Bailer Record

Schlumberger