

Company: ExxonMobil

Well: FLA A-12a

Field: Flounder

Rig: Prod 4

Country: Australia

Dummy Plug

7" MPBT Plug

Dump Bailer Record

Rig: Prod 4

Field: Flounder

Location: Gippsland Basin

Well: FLA A-12a

Company: ExxonMobil

LOCATION	
Gippsland Basin	Elev.: K.B. 33.85 m
Bass Strait	G.L. -93 m
	D.F. 33.85 m
Permanent Datum:	Mean Sea Level
Log Measured From:	Kelly Bushing
Drilling Measured From:	Kelly Bushing
State: Victoria	Max. Well Deviation 52 deg
	Longitude 148° 26' 22.833"E
	Latitude 38° 18' 39.173"S

Logging Date	17-Nov-2005		
Run Number	1-4		
Depth Driller	2965 m		
Schlumberger Depth	2857 m		
Bottom Log Interval	2857 m		
Top Log Interval	2780 m		
Casing Fluid Type	Production Fluids		
Salinity			
Density			
Fluid Level			
BIT/CASING/TUBING STRING			
Bit Size	8.500 in		
From	450 m		
To	2965 m		
Casing/Tubing Size	7.000 in		
Weight	26 lbn/ft		
Grade	L-80		
From	12.8 m		
To	2915 m		
Maximum Recorded Temperatures	112 degC		
Logger On Bottom	17-Nov-2005	15:00	
Unit Number	1	VEA	
Recorded By	Paul Tarrant, Joel Hogan		
Witnessed By	Barrie White		

PVT DATA				Run 1	Run 2	Run 3
Oil Density						
Water Salinity						
Gas Gravity						
Bo						
Bw						
1/Bg						
Bubble Point Pressure						
Bubble Point Temperature						
Solution GOR						
Maximum Deviation	52 deg					
CEMENTING DATA						
Primary/Squeeze	Primary					
Casing String No						
Lead Cement Type						
Volume						
Density						
Water Loss						
Additives						
Tail Cement Type						
Volume						
Density						
Water Loss						
Additives						
Expected Cement Top						
Logging Date						
Run Number						
Depth Driller						
Schlumberger Depth						
Bottom Log Interval						
Top Log Interval						
Casing Fluid Type						
Salinity						
Density						
Fluid Level						
BIT/CASING/TUBING STRING						
Bit Size						
From						
To						
Casing/Tubing Size						
Weight						
Grade						
From						
To						
Maximum Recorded Temperatures						
Logger On Bottom						
Unit Number						
Recorded By						
Witnessed By						

DEPTH SUMMARY LISTING

Date Created: 17-NOV-2005 17:29:09

Depth System Equipment

Depth Measuring Device	Tension Device	Logging Cable
Type: IDW-H Serial Number: 797 Calibration Date: 01-May-2005 Calibrator Serial Number: 1009 Calibration Cable Type: 2-32ZT Wheel Correction 1: -3 Wheel Correction 2: 2	Type: CMTD-C Serial Number: 1037 Calibration Date: 22 Sep 05 Calibrator Serial Number: 57144 Calibration Gain: 1.295 Calibration Offset: 777	Type: 2-32ZT Serial Number: 22372 Length: 4799.99 M Conveyance Method: Wireline Rig Type: Offshore_Fixed

Depth Control Parameters

Log Sequence:	Subsequent Trip To the Well
Reference Log Name:	Solar Log
Reference Log Run Number:	1
Reference Log Date:	15 Apr 03








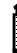



Depth Control Remarks

1.
2.
3.
4.
5.
6.

DISCLAIMER

THE USE OF AND RELIANCE UPON THIS RECORDED-DATA BY THE HEREIN NAMED COMPANY (AND ANY OF ITS AFFILIATES, PARTNERS, REPRESENTATIVES, AGENTS, CONSULTANTS AND EMPLOYEES) IS SUBJECT TO THE TERMS AND CONDITIONS AGREED UPON BETWEEN SCHLUMBERGER AND THE COMPANY, INCLUDING: (a) RESTRICTIONS ON USE OF THE RECORDED-DATA; (b) DISCLAIMERS AND WAIVERS OF WARRANTIES AND REPRESENTATIONS REGARDING COMPANY'S USE OF AND RELIANCE UPON THE RECORDED-DATA; AND (c) CUSTOMER'S FULL AND SOLE RESPONSIBILITY FOR ANY INFERENCE DRAWN OR DECISION MADE IN CONNECTION WITH THE USE OF THIS RECORDED-DATA.

OTHER SERVICES1 OS1: None OS2: OS3: OS4: OS5:
REMARKS: RUN NUMBER 1
Log correlated to Solar log, dated 15-Apr-2003, provided by client
Objective:
RIH with a dummy plug to obtain HUD, pressure and temperature.
HUD = 2855 m MDKB, Pressure = 3350PSI , Temp = 232degF
Set MPBT plug at 2818m MDKB.
CCL to tool bottom = 6.6m
Tool bottom to top of seal = 0.5m

DOWNHOLE EQUIPMENT			DOWNHOLE EQUIPMENT		
AH-SWBS AH-SWBS 731		12.02	AH-SWBS		14.84
AH-SWBS AH-SWBS 761		11.34	AH-SWBS		14.53
AH-SWBS AH-SWBS 762		10.65	MH-SWHS MH-SWHS 753		13.92
MH-SWHS MH-SWHS 736		9.97	CCL-L CCL-L 4195		13.44
CCL-L CCL-L 4195		9.64	AH-DB-TT AH-DB-TT		12.98
MPSU-CA MPSU-CA 1011		9.18			

MPEX-EA_S
MPEX-EA_S

2.77

TOOL BOTTOM

MAXIMUM STRING DIAMETER 2.13 IN
MEASUREMENTS RELATIVE TO TOOL ZERO
ALL LENGTHS IN METERS

SHM_GUN
GUN

0.79

TOOL BOTTOM

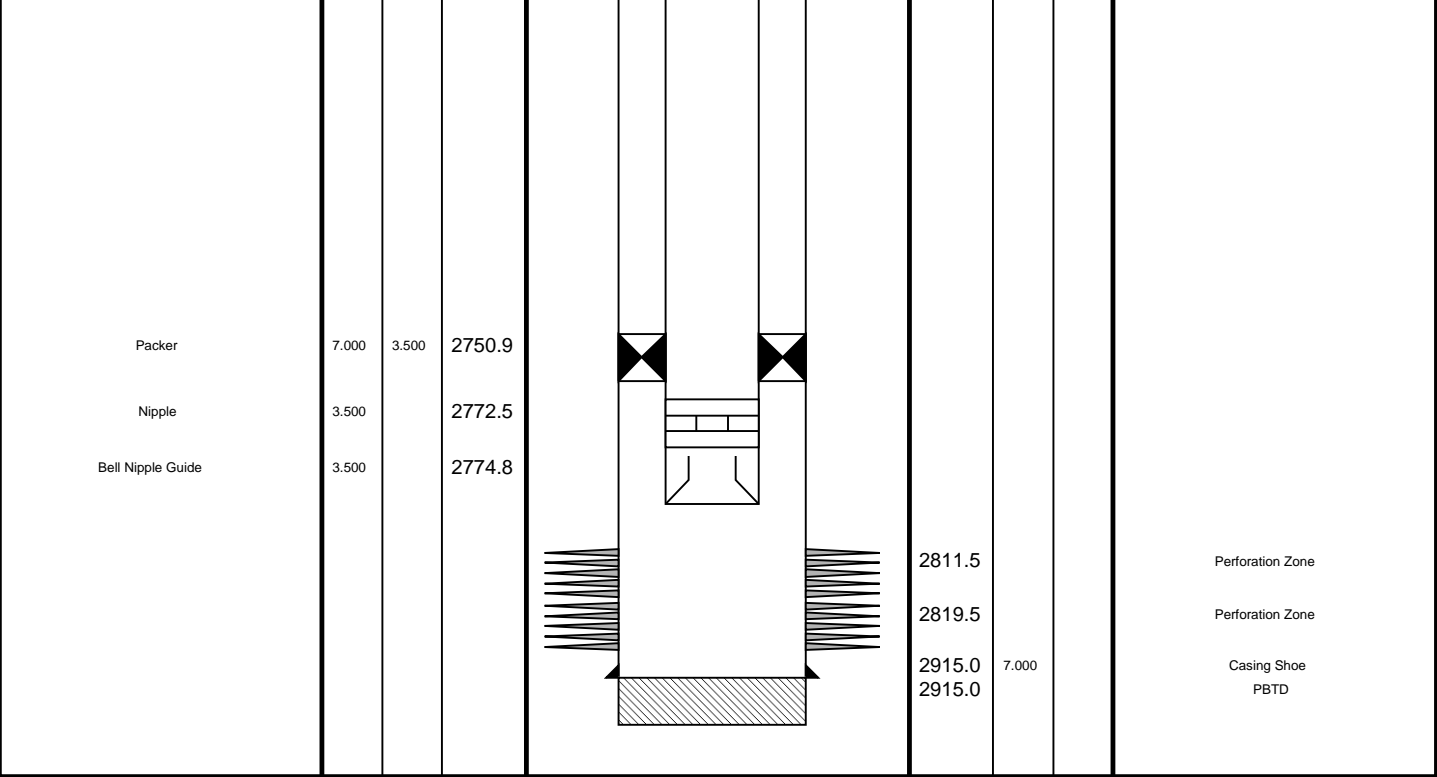
MAXIMUM STRING DIAMETER 2.13 IN
MEASUREMENTS RELATIVE TO TOOL ZERO
ALL LENGTHS IN METERS

Client: ExxonMobil
Well: FLA A-12a
Field: Flounder
State: Victoria
Country: Australia

Drawing Date: 11/9/2005
API #:

Rig Name: Flounder
Reference Datum: Kelly Bushing
Elevation: 33.5 m

Production String	(in)		(m)	Well Schematic	(m)		(in)		Casing String
	OD	ID	MD		MD	OD	ID		
Tubing Hanger	10.750	3.500	12.2		12.8	7.000		Casing String	
Tubing	3.500		12.2		12.8	10.750	7.000	Casing String	
Shutin Valve	3.500		450.6					Casing String	
Gas Lift Mandrel	3.500		894.3		863.3	10.750		Liner Hanger	
Gas Lift Mandrel	3.500		1357.0						
Gas Lift Mandrel	3.500		1549.1						
Nipple	3.500		1565.1						



Dump Bailer
Run 2 – Cement

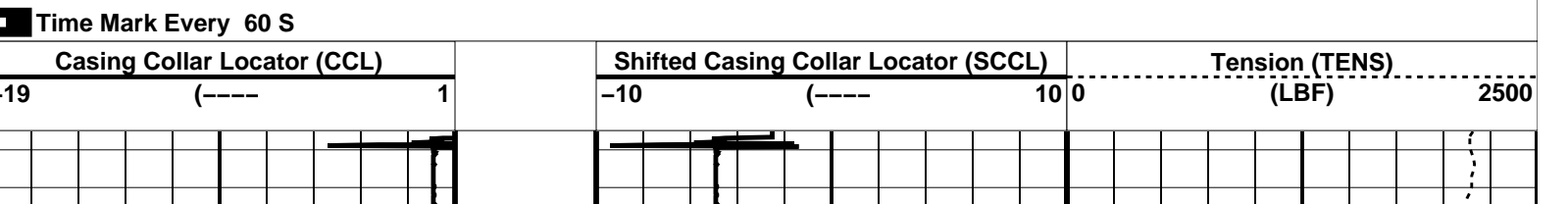
MAXIS Field Log

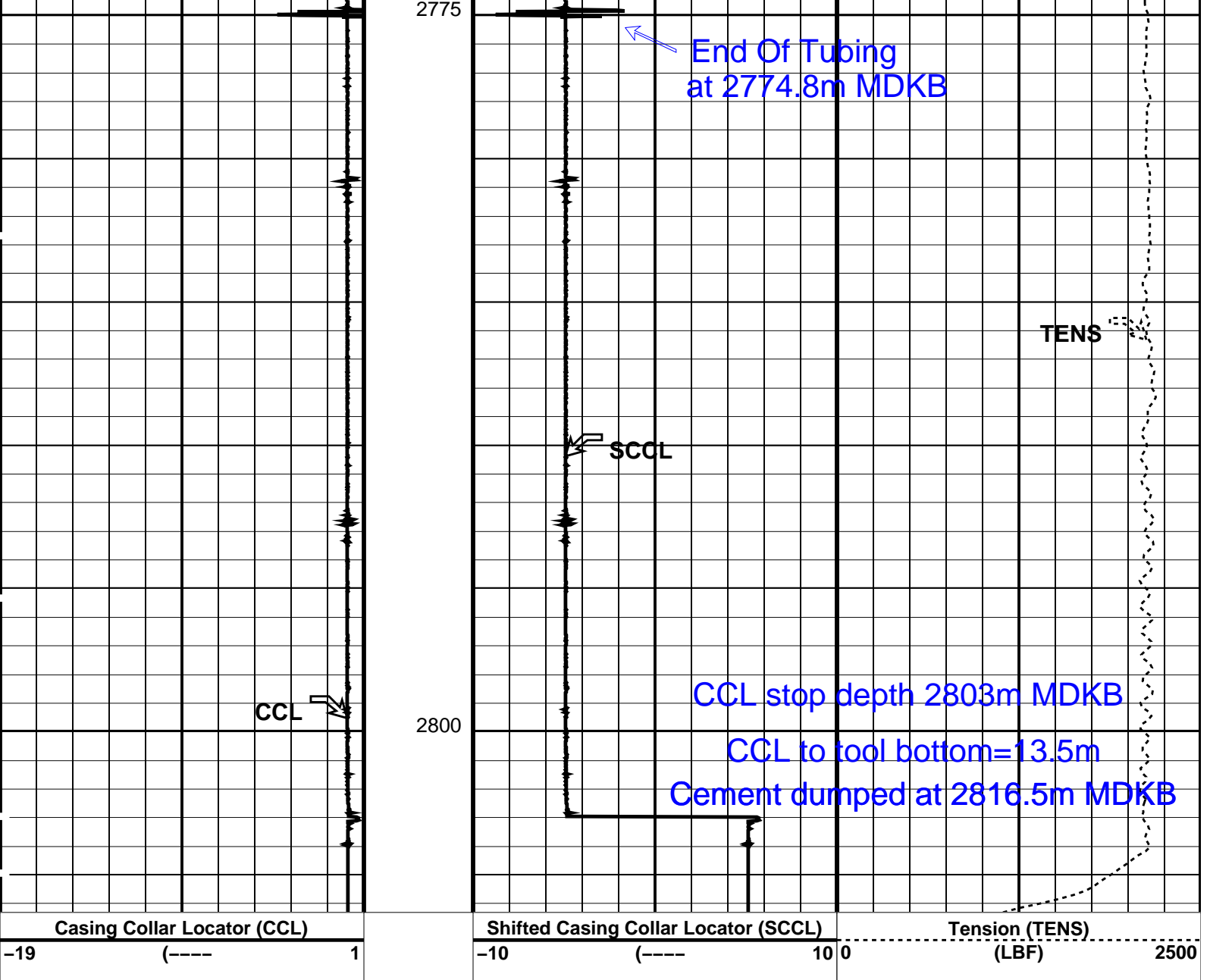
Company: ExxonMobil Well: FLA A-12

Output DLIS Files					
DEFAULT	PERFO_021LUP	FN:20	PRODUCER	18-Nov-2005 09:22	2806.3 M 2772.5 M

OP System Version: 13C0-300			
MCM			
SHM_GUN	SRC-2820-ASFS-WPP_k	CCL-L	13C0-300

PIP SUMMARY





PIP SUMMARY

Time Mark Every 60 S

Parameters		
DLIS Name	Description	Value
CCL-L	Casing Collar Locator	
CCLD	CCL reset delay	12 IN
CCLT	CCL Detection Level	0.3 V

Format: PERFO Vertical Scale: 1:200 Graphics File Created: 18-Nov-2005 09:22

OP System Version: 13C0-300			
MCM			
SHM_GUN	SRC-2820-ASFS-WPP_t	CCL-L	13C0-300

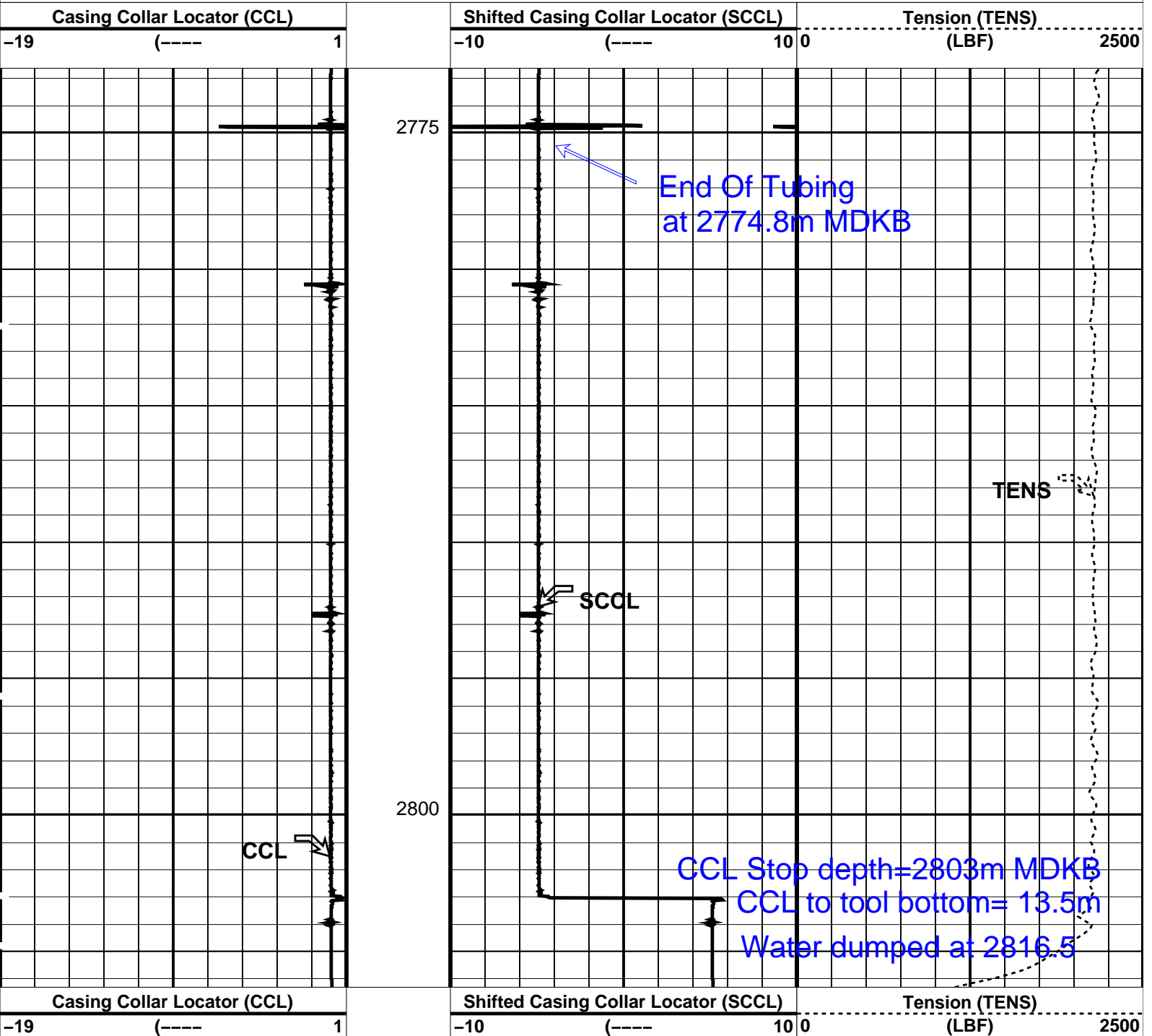
Output DLIS Files			
DEFAULT	PERFO_021LUP	FN:20 PRODUCER	18-Nov-2005 09:22

Well: FLA A-12

DEFAULT	PERFO_019LUP	FN:18	PRODUCER	18-Nov-2005 07:35	2806.3 M	2772.6 M
---------	--------------	-------	----------	-------------------	----------	----------

SHM_GUN	SRC-2820-ASFS-WPP_k	CCL-L	13C0-300
---------	---------------------	-------	----------

Time Mark Every 60 S



DLIS Name	Description	Value
-----------	-------------	-------

	CCL-L: Casing Collar Locator			
CCLD	CCL reset delay	12	IN	
CCLT	CCL Detection Level	0.3	V	

Format: PERFO Vertical Scale: 1:200 Graphics File Created: 18-Nov-2005 07:35

MCM

SHM GUN	SRC-2820-ASFS-WPP k	CCL-L	13C0-300
---------	---------------------	-------	----------

DEFAULT PERFO 019LUP FN:18 PRODUCER 18-Nov-2005 07:35



7" MPBT Plug Setting Pass

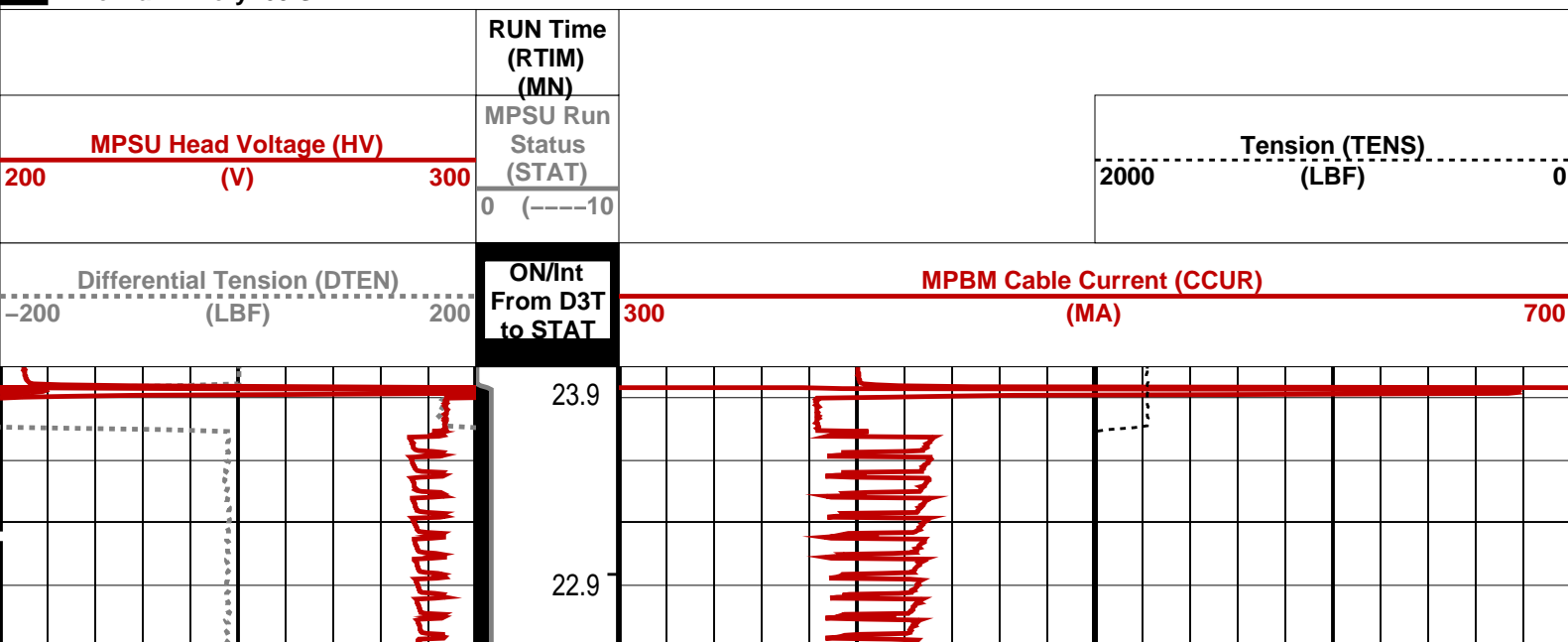
MAXIS Field Log

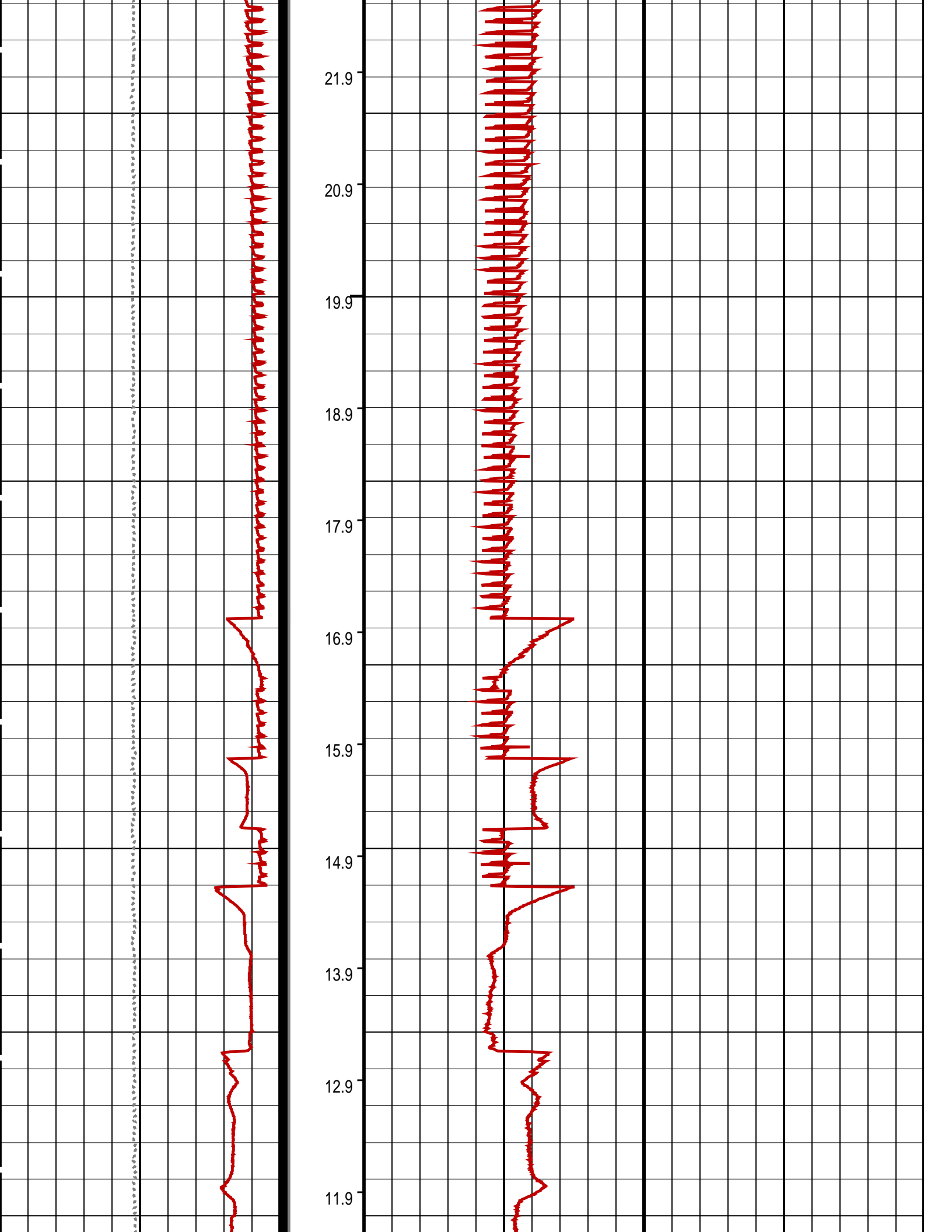
DEFAULT	CCL 016LUP	FN:15	PRODUCER	17-Nov-2005 14:57	12192.0 M	11837.5 M
---------	------------	-------	----------	-------------------	-----------	-----------

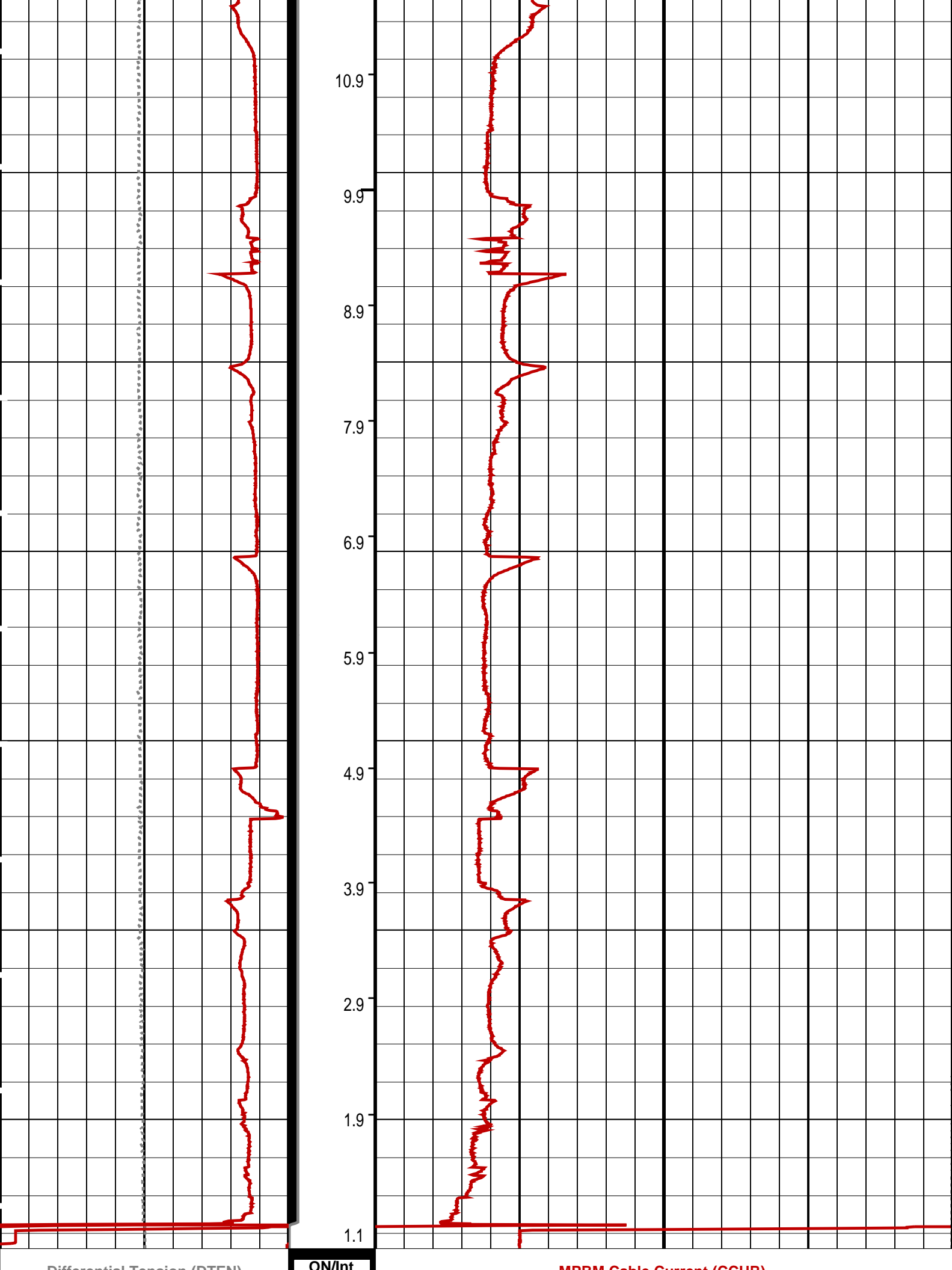
MCM

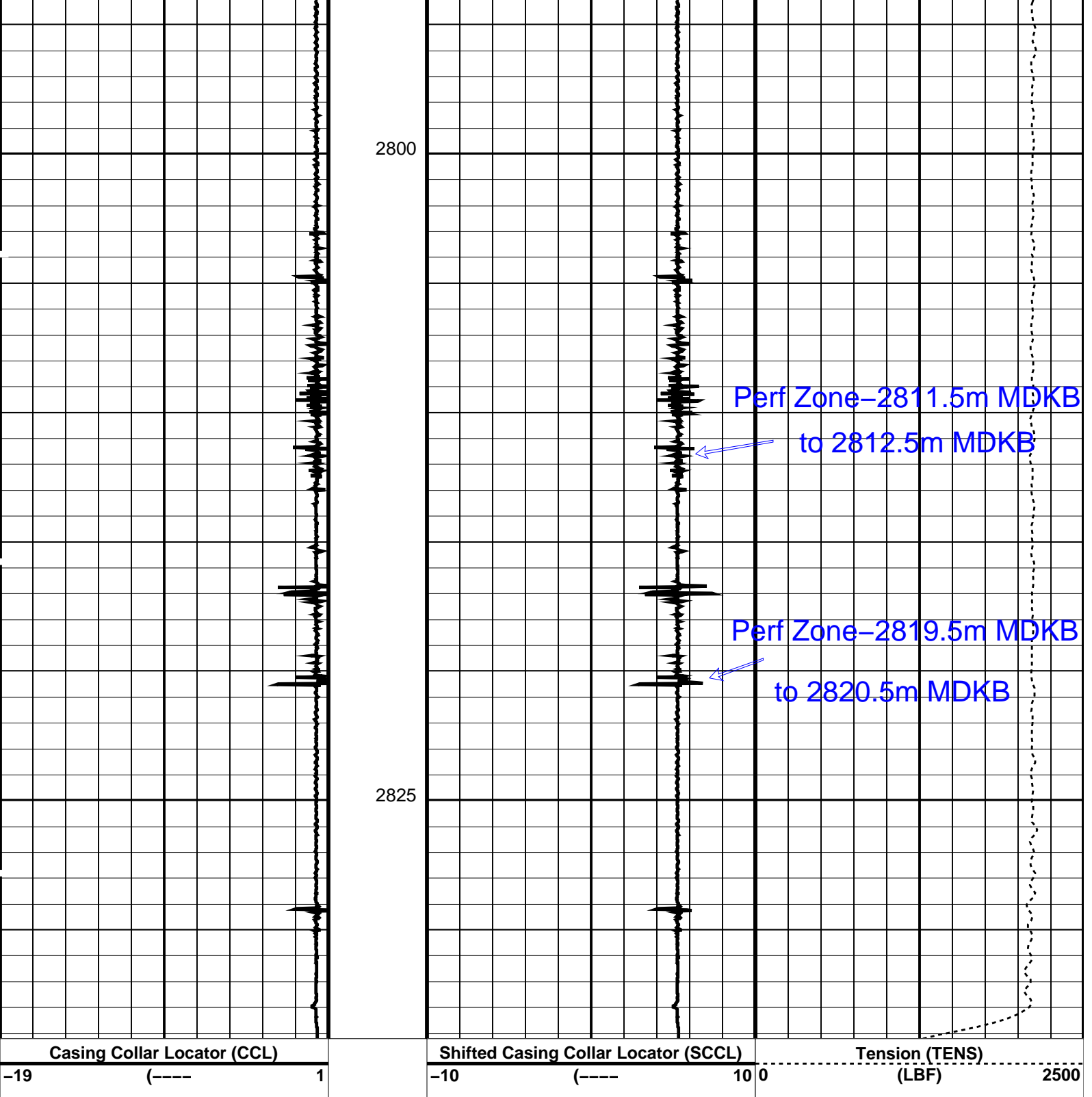
MPEX-EA_S	SRC-2820-ASFS-WPP_t	MPSU-CA	SRC-2820-ASFS-WPP_t
CC-L	13C0-300		

- MPSU Run Time Every 1 MN
- MPSU Run Time Every 10 MN









PIP SUMMARY

Time Mark Every 60 S

Parameters

DLIS Name	Description	Value
CCL-L: Casing Collar Locator		
CCLD	CCL reset delay	12 IN
CCLT	CCL Detection Level	0.3 V

Format: PERFO Vertical Scale: 1:200

Graphics File Created: 17-Nov-2005 14:47

OP System Version: 13C0-300
MCM

MPEX-EA_S SRC-2820-ASFS-WPP_t
CCL-L 13C0-300

MPSU-CA

SRC-2820-ASFS-WPP_t

Schlumberger

MPBT Dummy Plug
Correlation Pass

MAXIS Field Log

Company: ExxonMobilWell: FLA A-12a

Input DLIS Files

DEFAULTPSP_055LUPFN:52PRODUCER17-Nov-2005 12:022857.3 M2780.3 M

Output DLIS Files

DEFAULTPSP_056PUPFN:53PRODUCER17-Nov-2005 12:142857.0 M2780.5 M

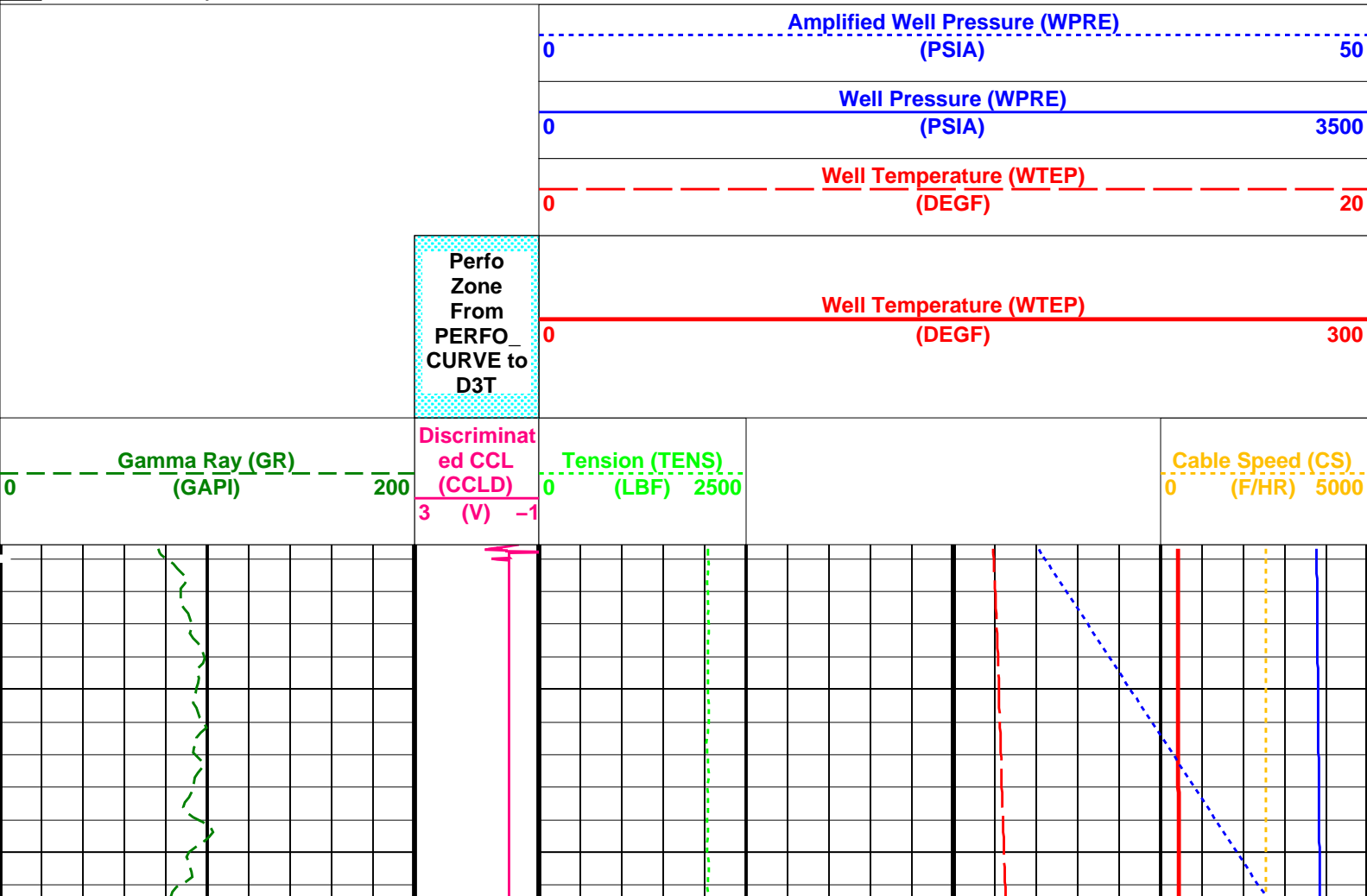
OP System Version: 13C0-300

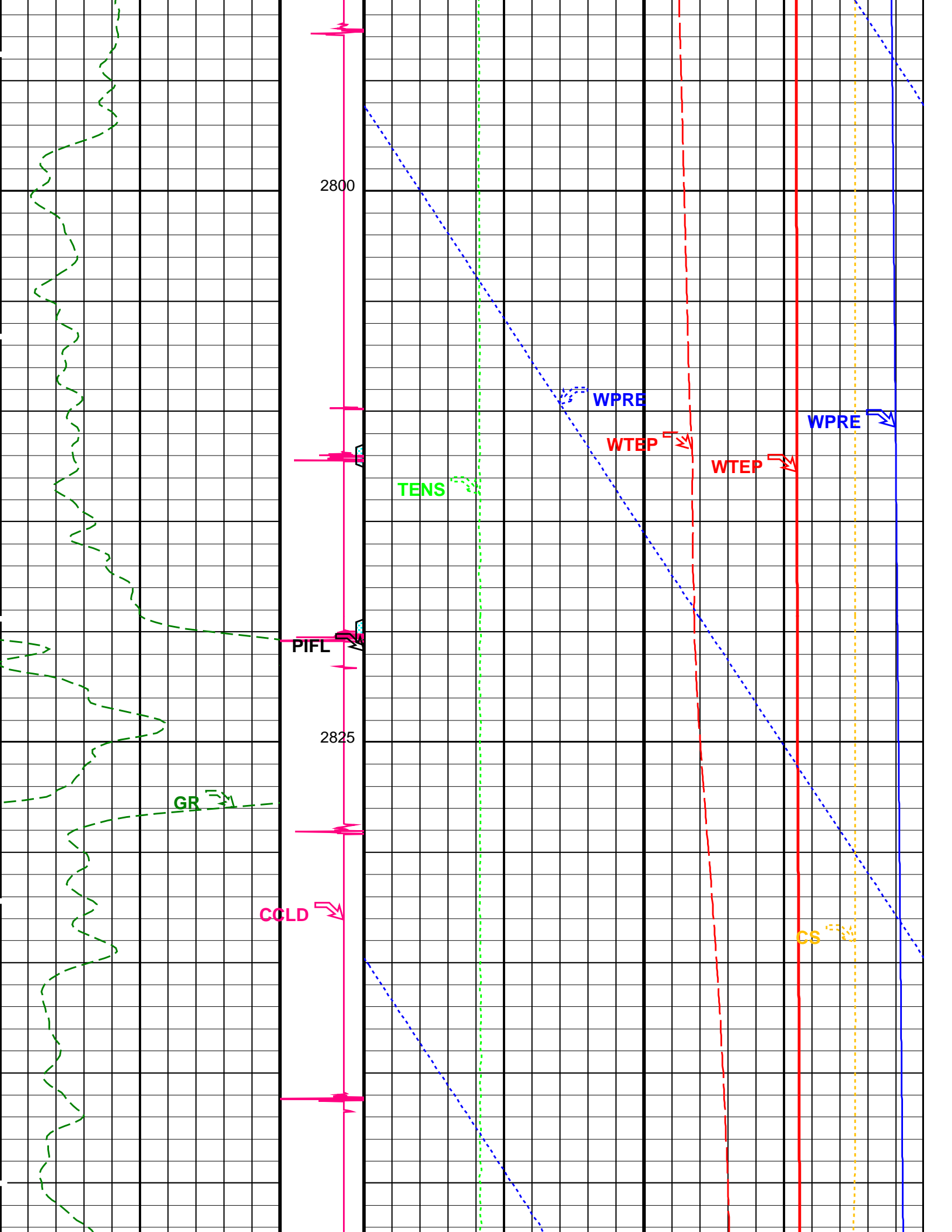
MCM

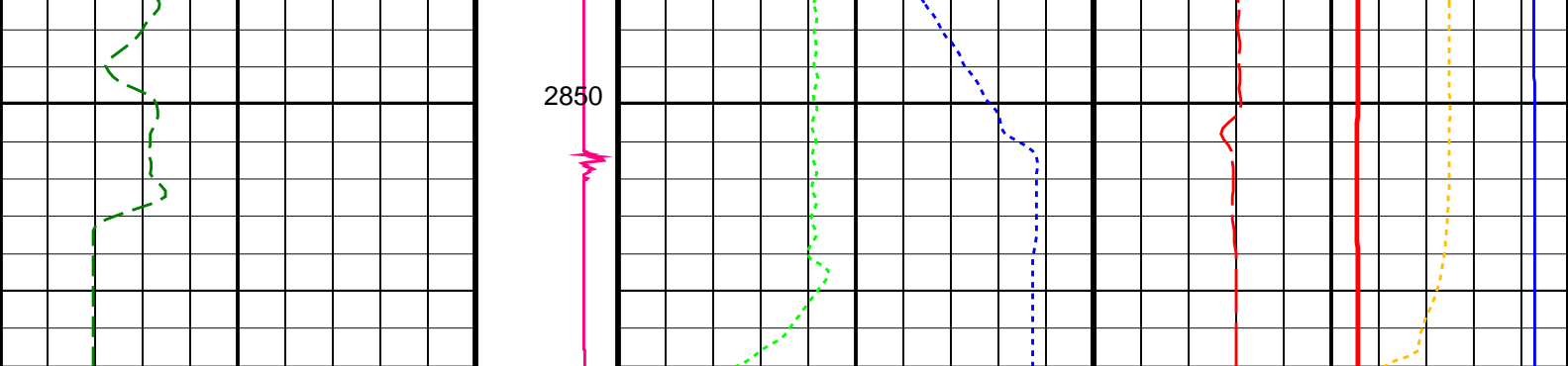
PSPT-A/B13C0-300

PIP SUMMARY

Time Mark Every 60 S







Gamma Ray (GR) (GAPI)	Discriminat ed CCL (CCLD) (V)	Tension (TENS) (LBF)	Cable Speed (CS) (F/HR)
0 --- 200	3 --- -1	0 --- 2500	0 --- 5000

Perfo Zone From PERFO_ CURVE to D3T	Well Temperature (WTEP) (DEGF)		0	300
	Well Temperature (WTEP) (DEGF)		0	20
	Well Pressure (WPRE) (PSIA)		0	3500
	Amplified Well Pressure (WPRE) (PSIA)		0	50

PIP SUMMARY

Time Mark Every 60 S

Format: PSP_1 Vertical Scale: 1:200 Graphics File Created: 17-Nov-2005 12:14

OP System Version: 13C0-300
MCM

PSPT-A/B 13C0-300

Parameters		
DLIS Name	Description	Value
DO	System and Miscellaneous	
PP	Depth Offset for Playback	-0.3 M
	Playback Processing	NORMAL

Input DLIS Files						
DEFAULT	PSP_055LUP	FN:52	PRODUCER	17-Nov-2005 12:02	2857.3 M	2780.3 M
Output DLIS Files						
DEFAULT	PSP_056PUP	FN:53	PRODUCER	17-Nov-2005 12:14		

Company: **ExxonMobil**

Well: **FLA A-12a**

Field: **Flounder**

Rig: **Prod 4**

Country: **Australia**

Schlumberger

Dummy Plug

7" MPBT Plug
Dump Bailer Record