



Company: ExxonMobil

Well: FLA A-2a

Field: Flounder

Rig: Prod 4

Country: Australia

7" MPBT Plug  
Dump Bailer  
Setting Record

Prod 4

Rig: Flounder

Location: Gippsland Basin

Well: FLA A-2a

Company: ExxonMobil

LOCATION	
Gippsland Basin Bass Strait	Elev.: K.B. 33 m G.L. -94 m D.F. 33 m
Permanent Datum: _____ Log Measured From: _____ Drilling Measured From: _____	Mean Sea Level _____ Kelly Bushing _____ Kelly Bushing _____ Elev.: 33 m -33.0 m above Perm. Datum
State: Victoria	Max. Well Deviation 44 deg Longitude 148 26' 56" S Latitude 038 18' 56" E

	Run 1	Run 2	Run 3
Oil Density			
Water Salinity			
Gas Gravity			
Bo			
Bw			
1/Bg			
Bubble Point Pressure			
Bubble Point Temperature			
Solution GOR			
Maximum Deviation	44 deg		
CEMENTING DATA			
Primary/Squeeze	Primary		
Casing String No			
Lead Cement Type			
Volume			
Density			
Water Loss			
Additives			
Tail Cement Type			
Volume			
Density			
Water Loss			
Additives			
Expected Cement Top			
Logging Date			
Run Number			
Depth Driller			
Schlumberger Depth			
Bottom Log Interval			
Top Log Interval			
Casing Fluid Type			
Salinity			
Density			
Fluid Level			
BIT/CASING/TUBING STRING			
Bit Size			
From			
To			
Casing/Tubing Size			
Weight			
Grade			
From			
To			
Maximum Recorded Temperatures			
Logger On Bottom			
Unit Number			
Recorded By			
Witnessed By			

Logging Date	15-Nov-2005
Run Number	1
Depth Driller	2849 m
Schlumberger Depth	2747 m
Bottom Log Interval	2747 m
Top Log Interval	2646 m
Casing Fluid Type	Production Fluids
Salinity	
Density	
Fluid Level	
BIT/CASING/TUBING STRING	
Bit Size	8.500 in
From	
To	
Casing/Tubing Size	7.000 in
Weight	26 lbm/ft
Grade	L-80
From	11.8 m
To	2849 m
Maximum Recorded Temperatures	112 degC
Logger On Bottom	15-Nov-2005
Unit Number	1
Recorded By	Paul Tarrant & Joel Hogan
Witnessed By	Barrie White

Logging Date	
Run Number	
Depth Driller	
Schlumberger Depth	
Bottom Log Interval	
Top Log Interval	
Casing Fluid Type	
Salinity	
Density	
Fluid Level	
BIT/CASING/TUBING STRING	
Bit Size	
From	
To	
Casing/Tubing Size	
Weight	
Grade	
From	
To	
Maximum Recorded Temperatures	
Logger On Bottom	
Unit Number	
Recorded By	
Witnessed By	

**DEPTH SUMMARY LISTING**

Date Created: 14-NOV-2005 17:29:09

**Depth System Equipment**

Depth Measuring Device		Tension Device		Logging Cable	
Type:	IDW-H	Type:	CMTD-C	Type:	2-32ZT
Serial Number:	797	Serial Number:	1037	Serial Number:	22372
Calibration Date:	01-May-2005	Calibration Date:	22 Sep 05	Length:	4799.99 M
Calibrator Serial Number:	1009	Calibrator Serial Number:	57144	Conveyance Method: Wireline Rig Type: Offshore_Fixed	
Calibration Cable Type:	2-32ZT	Calibration Gain:	1.295		
Wheel Correction 1:	-3	Calibration Offset:	777		
Wheel Correction 2:	2				

**Depth Control Parameters**

Log Sequence:	Subsequent Trip To the Well
Reference Log Name:	Solar Log
Reference Log Run Number:	1
Reference Log Date:	16 Sep 05

**Depth Control Remarks**

1.
2.
3.
4.
5.
6.













**DISCLAIMER**

THE USE OF AND RELIANCE UPON THIS RECORDED-DATA BY THE HEREIN NAMED COMPANY (AND ANY OF ITS AFFILIATES, PARTNERS, REPRESENTATIVES, AGENTS, CONSULTANTS AND EMPLOYEES) IS SUBJECT TO THE TERMS AND CONDITIONS AGREED UPON BETWEEN SCHLUMBERGER AND THE COMPANY, INCLUDING: (a) RESTRICTIONS ON USE OF THE RECORDED-DATA; (b) DISCLAIMERS AND WAIVERS OF WARRANTIES AND REPRESENTATIONS REGARDING COMPANY'S USE OF AND RELIANCE UPON THE RECORDED-DATA; AND (c) CUSTOMER'S FULL AND SOLE RESPONSIBILITY FOR ANY INFERENCE DRAWN OR DECISION MADE IN CONNECTION WITH THE USE OF THIS RECORDED-DATA.

OTHER SERVICES1
OS1: None
OS2:
OS3:
OS4:
OS5:

REMARKS: RUN NUMBER 1
Log correlated to Solar log dated 16 Sep 05, provided by the client.

Objective:
To set the top of seal of the MPBT Plug at 2720m MDKB.
CCL to tool bottom = 6.6m
Tool bottom to top of seal = 0.5m
CCL to top of seal = 6.6m + 0.5m = 7.1m
CCL stop depth = 2712.9m MDKB

CCL stop depth = 2742.0m MDRD					
RIH with dump bailer. Run one with water, followed by one run of cement					
giving approx 1.1m of cement on top of plug.					
Specialist: Paul Tarrant & Joel Hogan					
Operators: Andy Hall, Eddy Mezenberg					
Performed by Schlumberger					
RUN 1			RUN 2		
PROGRAM VERSION:		13C0-300	PROGRAM VERSION:		
FLUID LEVEL:			FLUID LEVEL:		
LOGGED INTERVAL	START	STOP	LOGGED INTERVAL	START	STOP
EQUIPMENT DESCRIPTION					
RUN 1			RUN 2		
SURFACE EQUIPMENT			SURFACE EQUIPMENT		
MPBM 81			WITM (SHM)		
DOWNHOLE EQUIPMENT			DOWNHOLE EQUIPMENT		
AH-SWBS AH-SWBS 731		12.02	AH-SWBS		14.84
AH-SWBS			AH-SWBS		14.53
AH-SWBS AH-SWBS 761		11.34	AH-SWBS		14.23
AH-SWBS AH-SWBS 762		10.65	MH-SWHS MH-SWHS 753		13.92
MH-SWHS MH-SWHS 736		9.97	CCL-L CCL-L 4195	Tension CCL 	13.44
CCL-L CCL-L 4195	CCL Tachomete Cable Cur Head Volt Tension 	9.64	AH-DB-TT AH-DB-TT		12.98
MPSU-CA MPSU-CA 1011		9.18			

MPEX-EA\_S  
MPEX-EA\_S

2.77

TOOL BOTTOM

MAXIMUM STRING DIAMETER 2.13 IN  
MEASUREMENTS RELATIVE TO TOOL ZERO  
ALL LENGTHS IN METERS

SHM\_GUN  
GUN

0.79

TOOL BOTTOM

MAXIMUM STRING DIAMETER 2.13 IN  
MEASUREMENTS RELATIVE TO TOOL ZERO  
ALL LENGTHS IN METERS

Client: ExxonMobil

Well: FLA A-2a

Field: Flounder

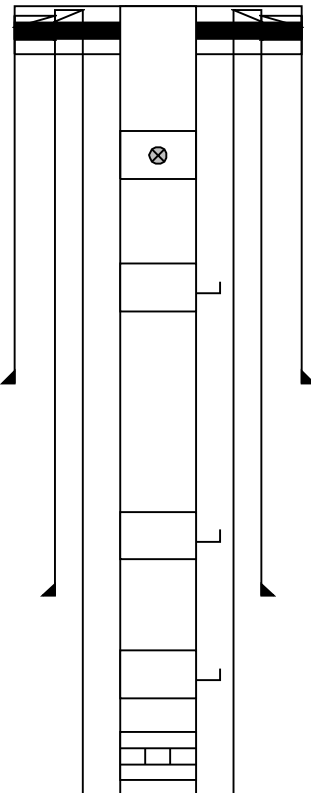
State: Victoria

Country: Australia

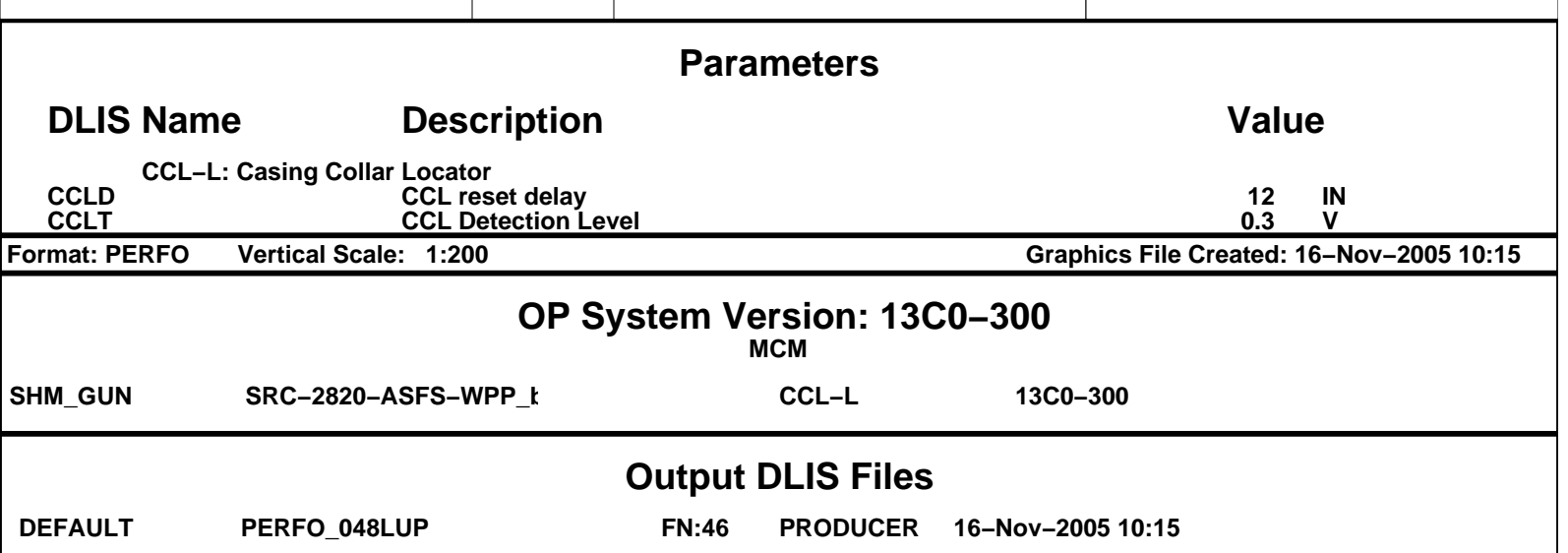
Rig Name: Flounder

Reference Datum: Kelly Bushing

Elevation: 33 m

Production String	(in)		(m)	Well Schematic	(m)	(in)		Casing String
	OD	ID	MD		MD	OD	ID	
Tubing Hanger	3.500	2.992	11.8		11.8	7.000		Casing String Liner Hanger
Shutin Valve	3.500		443.0		11.8	9.625	7.000	
Gas Lift Mandrel	3.500		789.9					
					981.5	13.375		Casing Shoe
Gas Lift Mandrel	3.500		1284.6					
					1350.0	9.625		Casing Shoe
Gas Lift Mandrel	3.500		1487.6					
Nipple	3.500		1601.2					



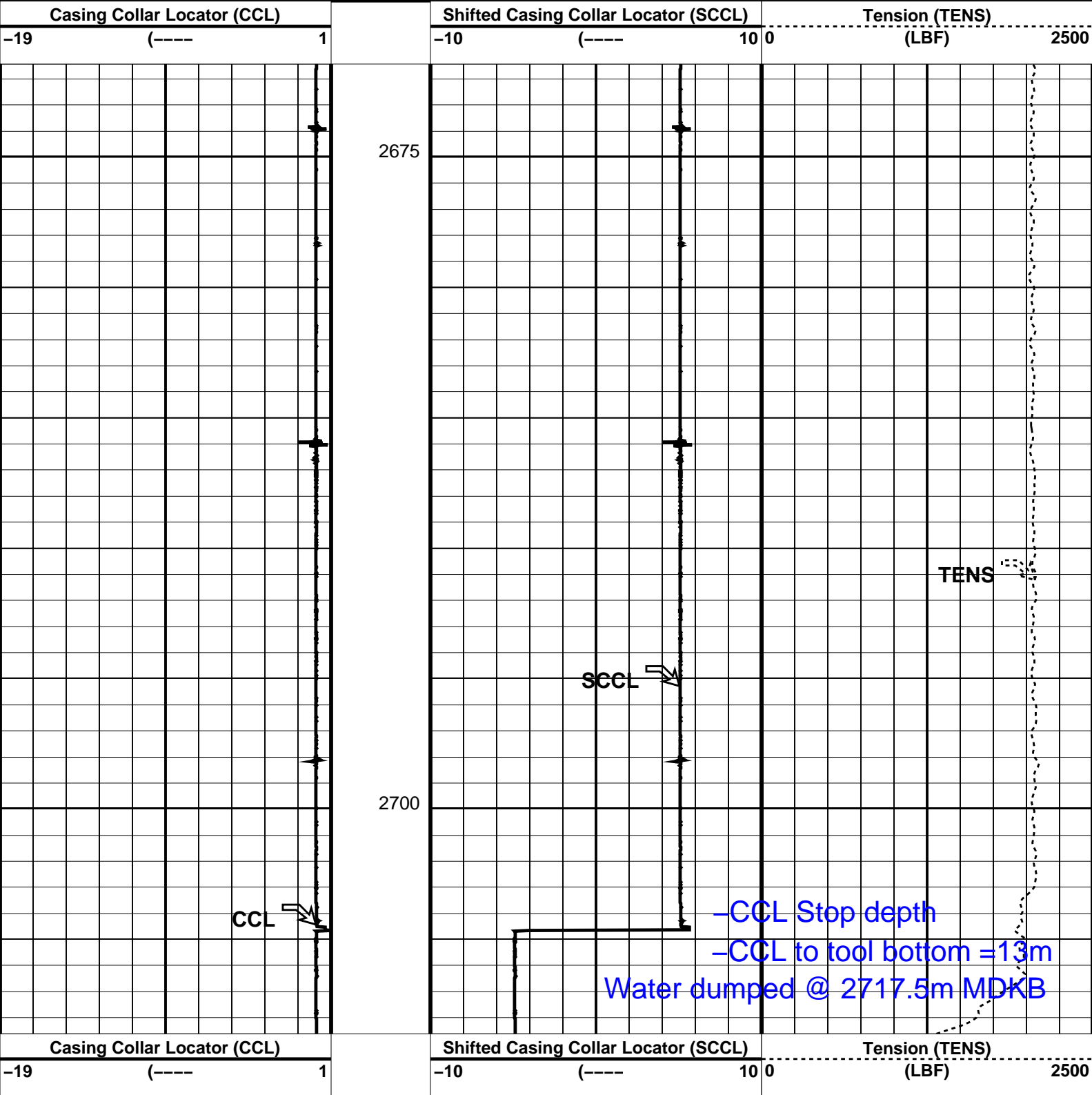


Output DLIS Files

DEFAULT      PERFO\_045LUP      FN:43    PRODUCER    16-Nov-2005 08:10    2708.6 M      2671.4 M

OP System Version: 13C0-300  
MCM

SHM\_GUN      SRC-2820-ASFS-WPP\_t      CCL-L      13C0-300



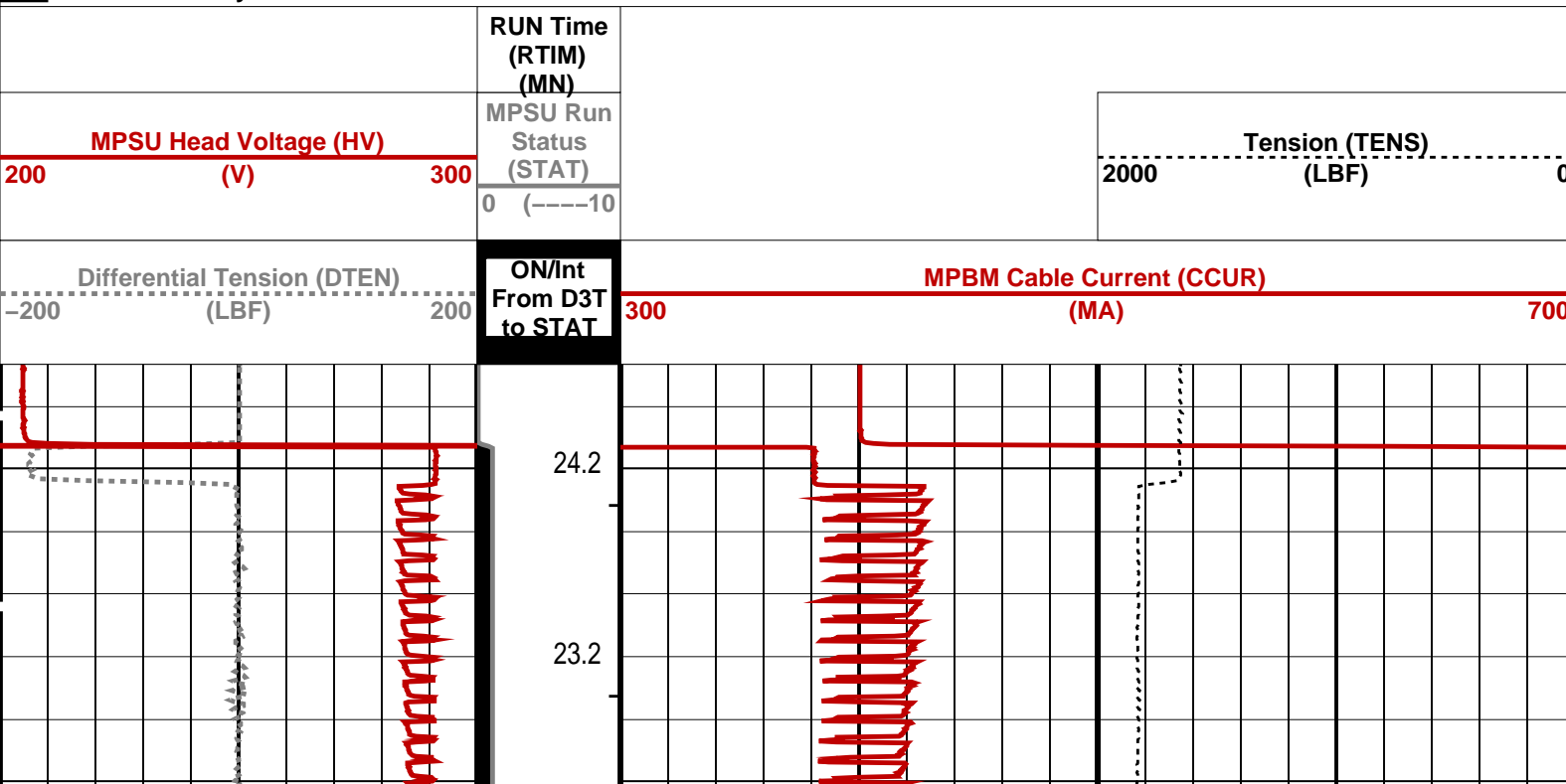


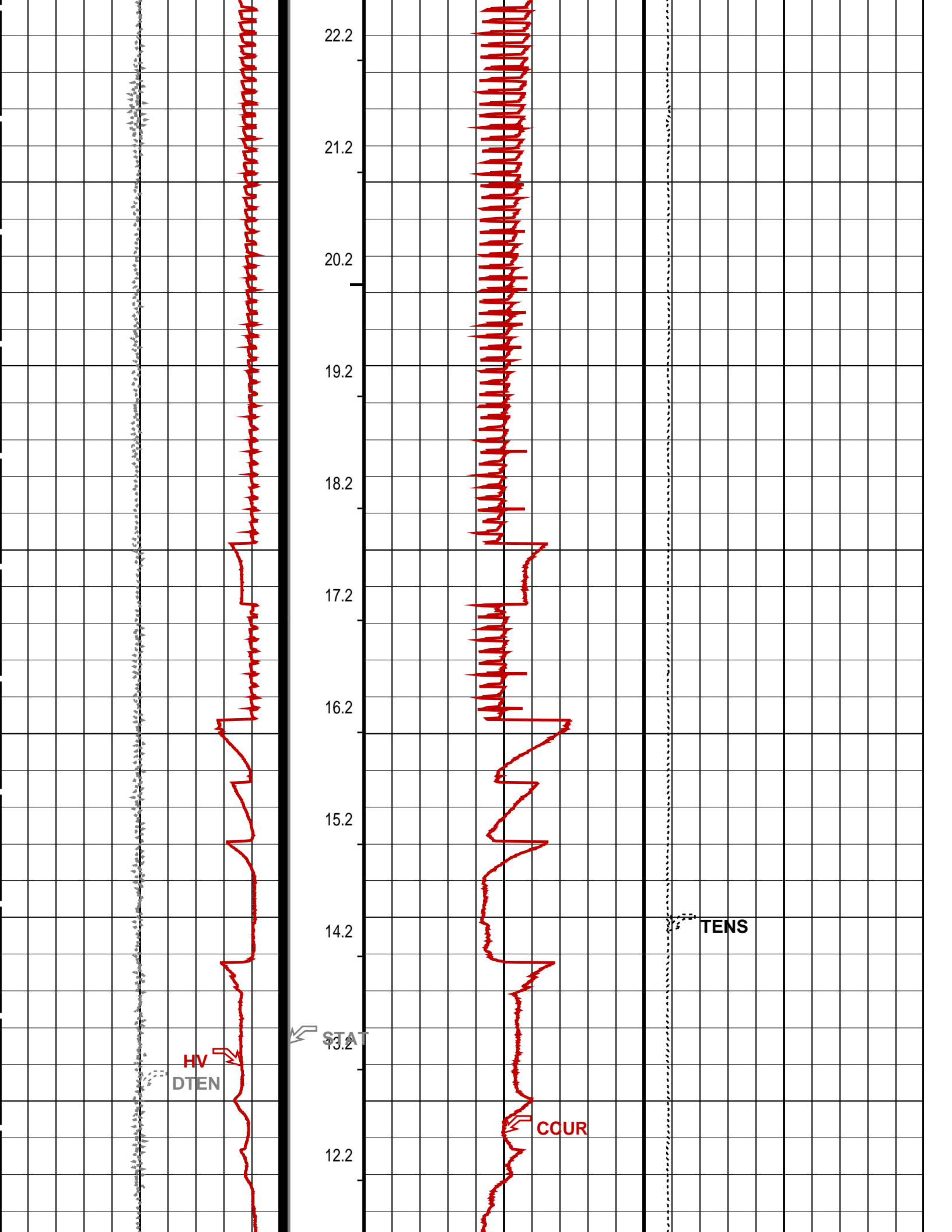
Output DLIS Files				
DEFAULT	PERFO_045LUP	FN:43	PRODUCER	16-Nov-2005 08:10

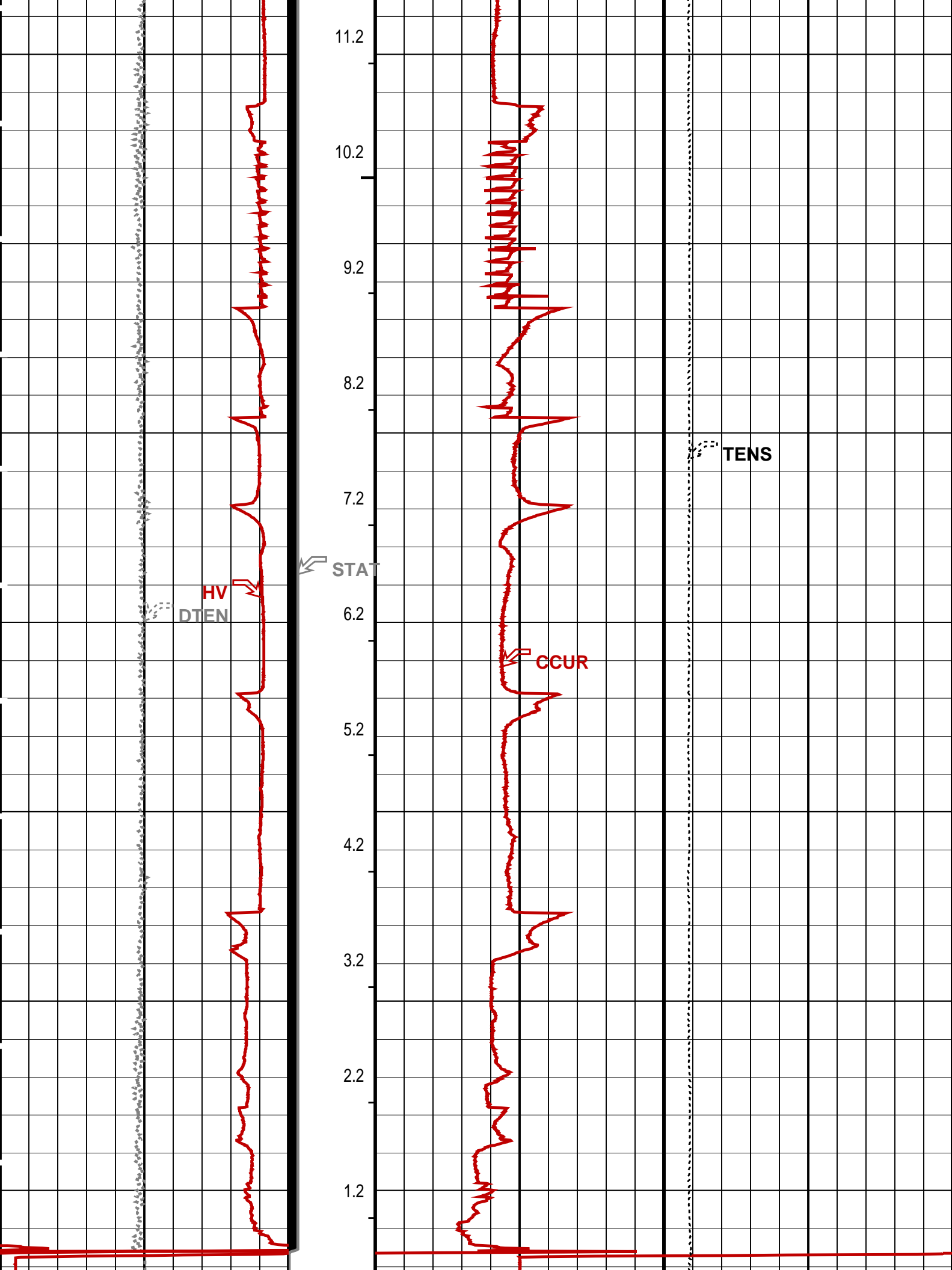
Output DLIS Files				
DEFAULT	CCL_039LUP	FN:37	PRODUCER	15-Nov-2005 16:34

<p align="center"><b>OP System Version: 13C0-300</b></p> <p align="center"><b>MCM</b></p>			
<b>MPEX-EA_S</b>	<b>SRC-2820-ASFS-WPP_t</b>	<b>MPSU-CA</b>	<b>SRC-2820-ASFS-WPP_t</b>
<b>CCL-L</b>	<b>13C0-300</b>		

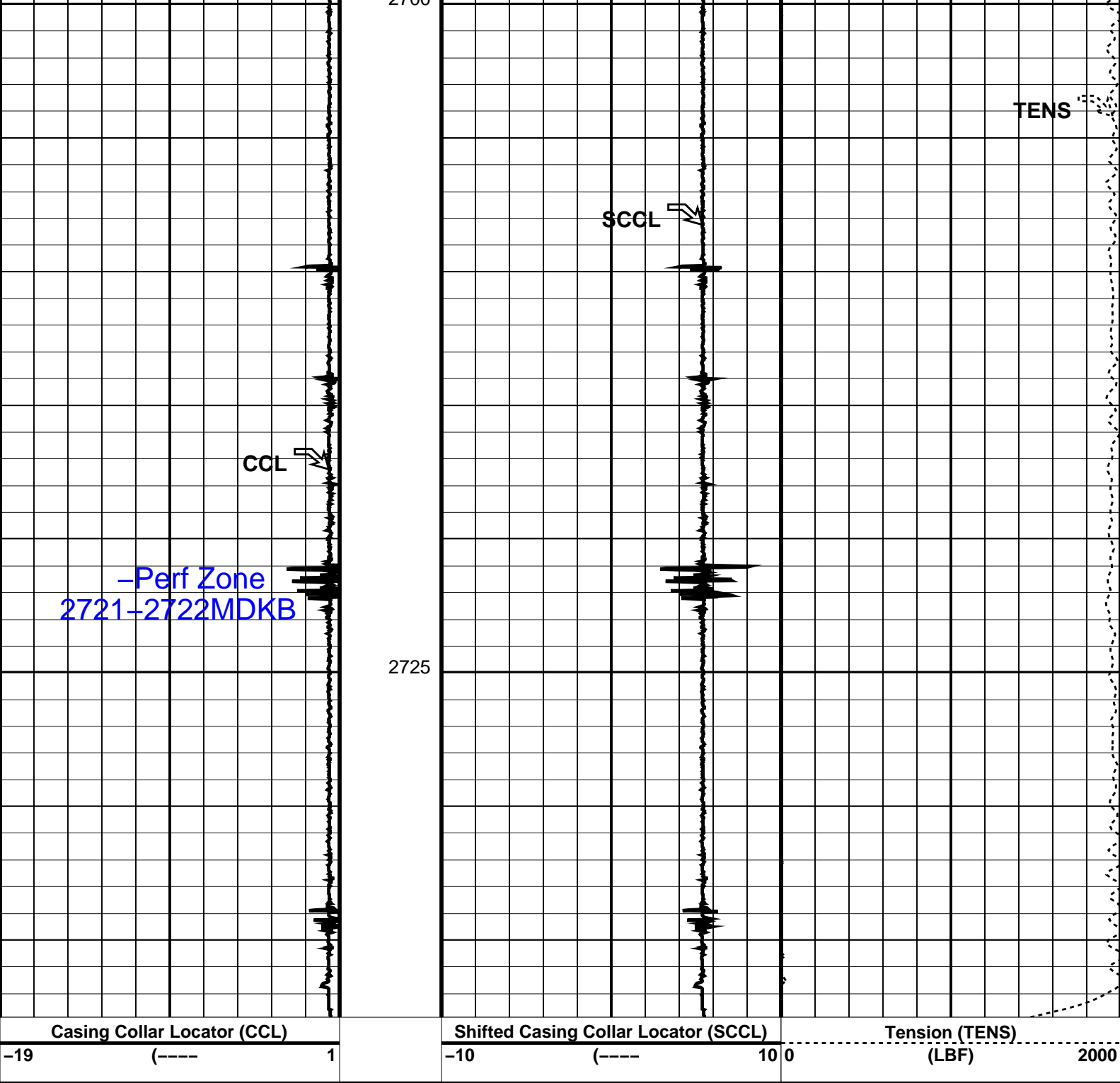
	<div> <div>PIP SUMMARY</div> <div> <div>⌵ MPSU Run Time Every 1 MN</div> <div>⌵ MPSU Run Time Every 10 MN</div> </div> </div>	
<div> <div>Time Mark Every 60 S</div> </div>		











Parameters			
DLIS Name	Description	Value	
	CCL-L: Casing Collar Locator		
CCLD	CCL reset delay	12	IN
CCLT	CCL Detection Level	0.3	V
Format: PERFO	Vertical Scale: 1:200	Graphics File Created: 15-Nov-2005 16:26	
OP System Version: 13C0-300			
MCM			
MPEX-EA_S	SRC-2820-ASFS-WPP_1	MPSU-CA	SRC-2820-ASFS-WPP_1
CCL-L	13C0-300		
Output DLIS Files			
DEFAULT	CCL_037LUP	FN:35	PRODUCER 15-Nov-2005 16:26



MPBT Dummy Plug  
Correlation Pass

MAXIS Field Log

Company: ExxonMobil Well: A-2a

Input DLIS Files

DEFAULT PSP\_030LUP FN:28 PRODUCER 15-Nov-2005 13:47 2751.3 M 2648.4 M

Output DLIS Files

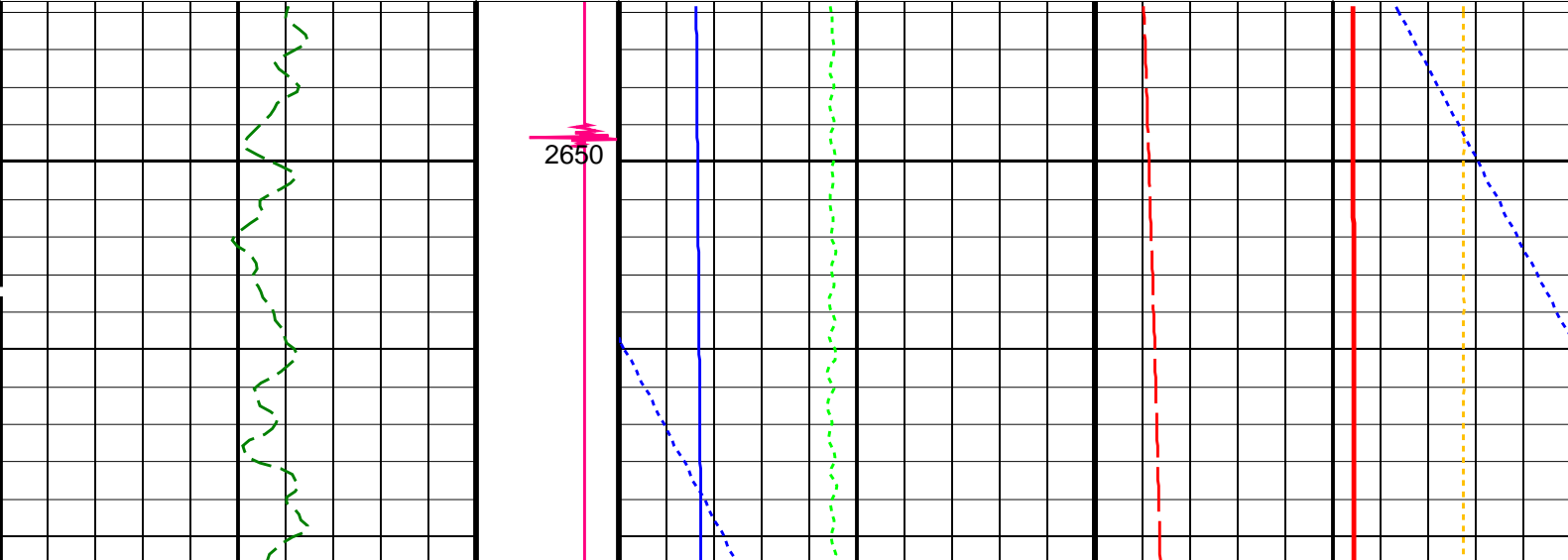
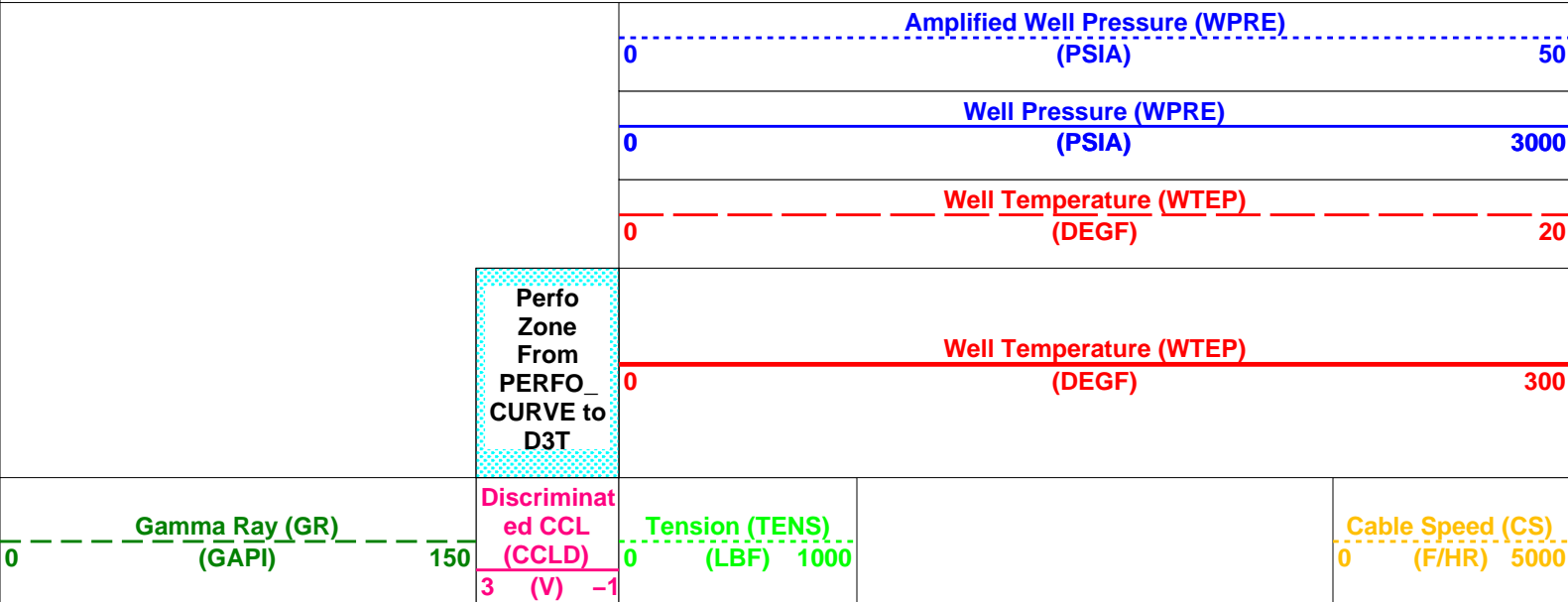
DEFAULT PSP\_031PUP FN:29 PRODUCER 15-Nov-2005 14:00 2748.1 M 2645.7 M

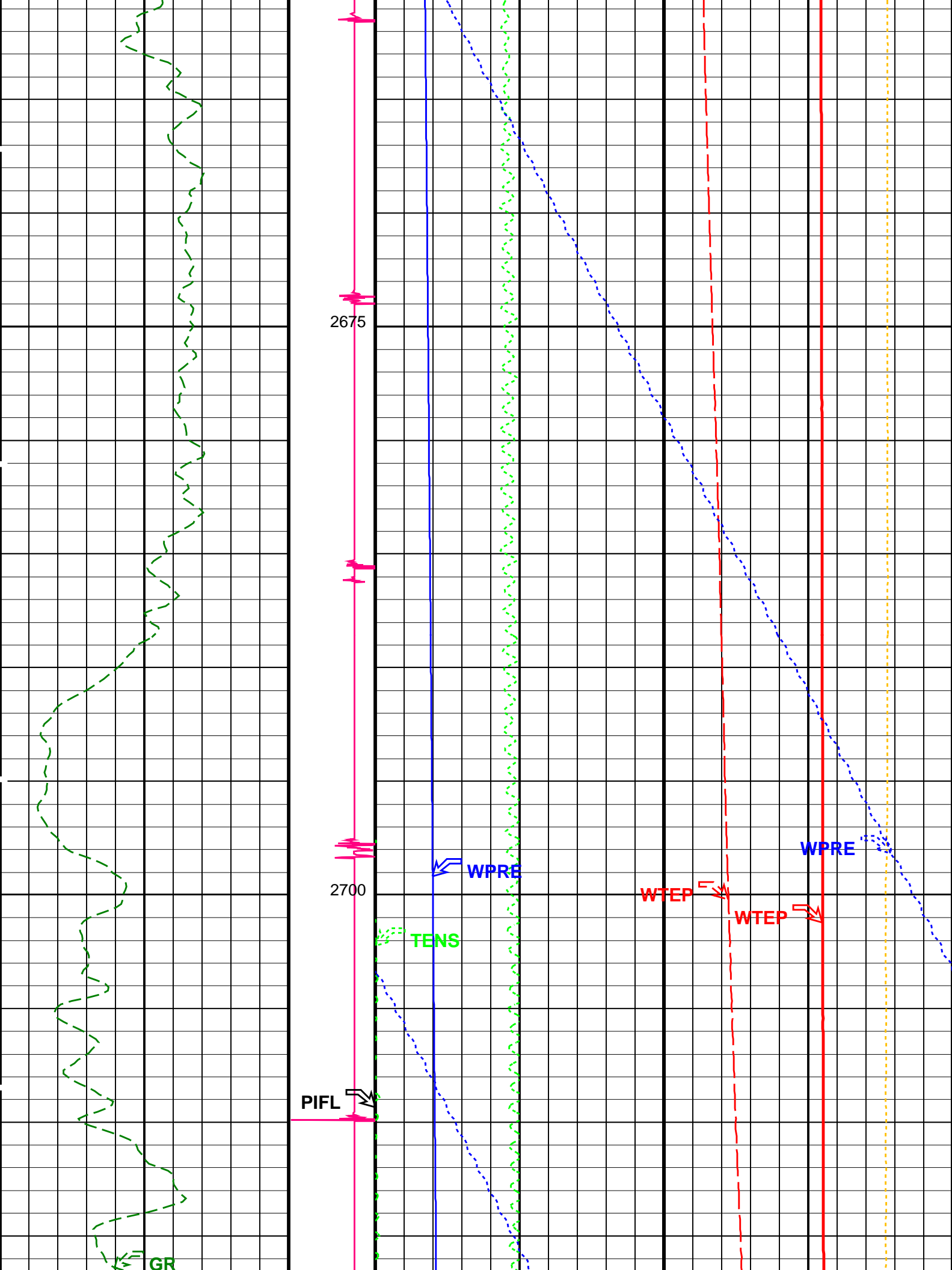
OP System Version: 13C0-300  
MCM

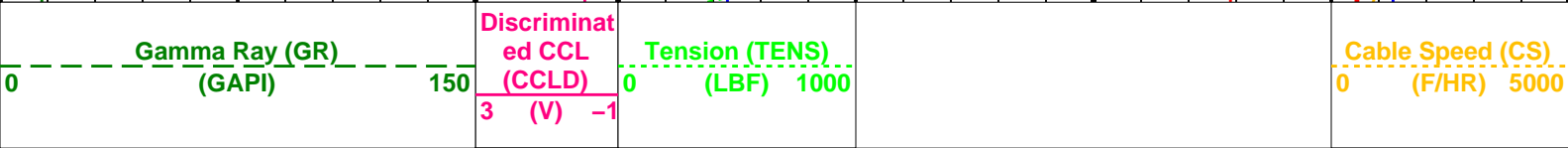
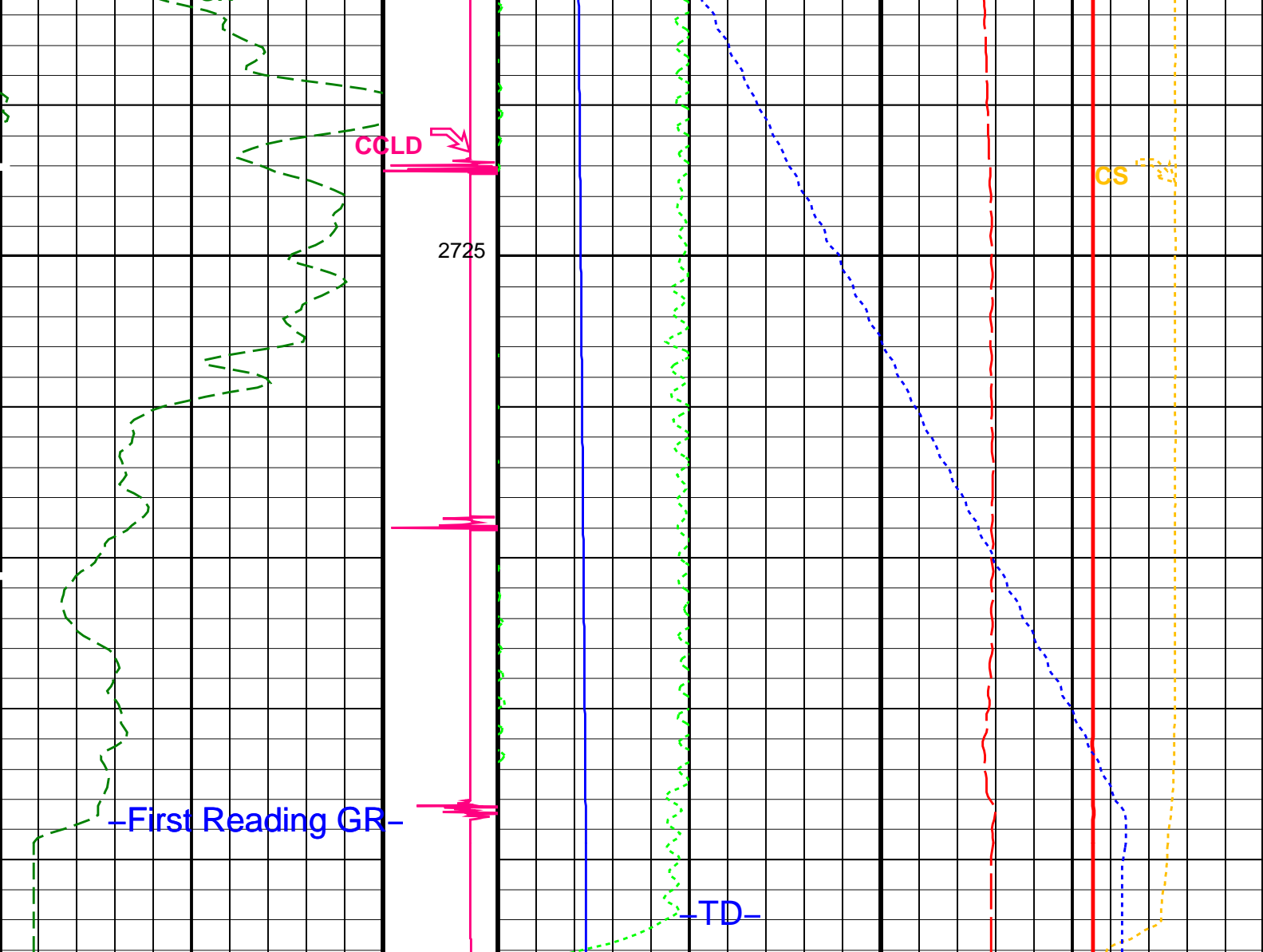
PSPT-A/B 13C0-300

PIP SUMMARY

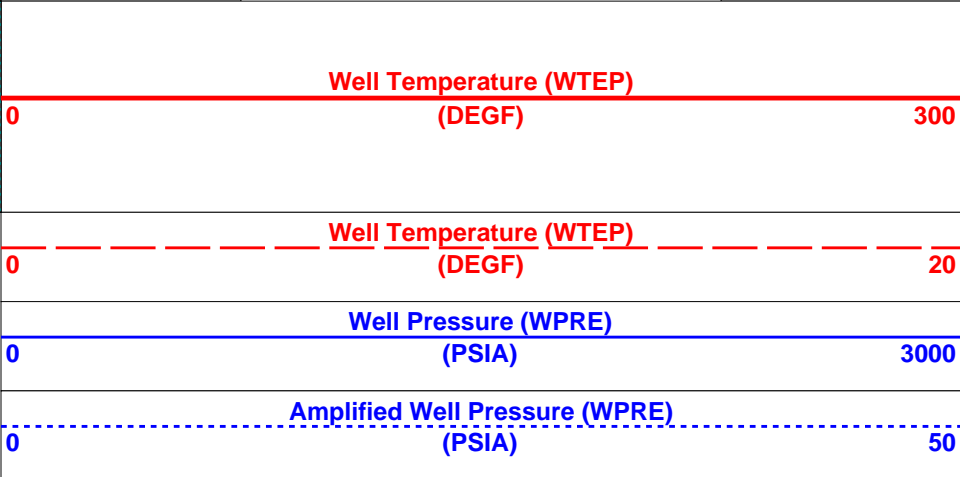
Time Mark Every 60 S







Perfo  
Zone  
From  
PERFO\_  
CURVE to  
D3T



PIP SUMMARY



## Parameters

DLIS Name		Description	Parameters			Value
DO	System and Miscellaneous	Depth Offset for Playback			-3.2	M
PP		Playback Processing			NORMAL	
Input DLIS Files						
DEFAULT	PSP_030LUP	FN:28	PRODUCER	15-Nov-2005 13:47	2751.3 M	2648.4 M
Output DLIS Files						
DEFAULT	PSP_031PUP	FN:29	PRODUCER	15-Nov-2005 14:00		
Company: ExxonMobil Schlumberger						
Well:	FLA A-2a					
Field:	Flounder					
Rig:	Prod 4					
Country:	Australia					
	7" MPBT Plug Dump Bailer Setting Record					