

Company: ExxonMobil

Well: FLA A-21a

Field: Flounder

Rig: Prod 4

Country: Australia

2 1/8" Enerjet Gun
MWPT
Perforating Record

Prod 4

Flounder

Gippsland Basin

FLA A-21a

ExxonMobil

LOCATION	Gippsland Basin	Elev.: K.B. 40.8 m
	Bass Strait	G.L. -93 m
		D.F. 40.8 m
Permanent Datum:	Mean Sea Level	Elev.: 0.0 m
Log Measured From:	Kelly Bushing	-40.8 m above Perm. Datum
Drilling Measured From:	Kelly Bushing	
State: Victoria	Max. Well Deviation 60 deg	Longitude 148 26' 17.304" S Latitude 038 18' 44.786" E

Logging Date	21-Nov-2005		
Run Number	1		
Depth Driller	3880 m		
Schlumberger Depth	3348 m		
Bottom Log Interval	3348 m		
Top Log Interval	3303 m		
Casing Fluid Type	Production Fluids		
Salinity			
Density			
Fluid Level			
BIT/CASING/TUBING STRING			
Bit Size			
From			
To			
Casing/Tubing Size	7.625 in		
Weight	29.7 lbm/ft		
Grade	L-80		
From	20.43 m		
To	3826 m		
Maximum Recorded Temperatures	106 degC		
Logger On Bottom	21-Nov-2005		16:30
Unit Number	Location	1	VEA
Recorded By	Paul Tarrant & Joel Hogan		
Witnessed By	Barrie White		

PVT DATA			
Oil Density	Run 1	Run 2	Run 3
Water Salinity			
Gas Gravity			
Bo			
Bw			
1/Bg			
Bubble Point Pressure			
Bubble Point Temperature			
Solution GOR			
Maximum Deviation	60 deg		
CEMENTING DATA			
Primary/Squeeze	Primary		
Casing String No			
Lead Cement Type			
Volume			
Density			
Water Loss			
Additives			
Tail Cement Type			
Volume			
Density			
Water Loss			
Additives			
Expected Cement Top			
Logging Date			
Run Number			
Depth Driller			
Schlumberger Depth			
Bottom Log Interval			
Top Log Interval			
Casing Fluid Type			
Salinity			
Density			
Fluid Level			
BIT/CASING/TUBING STRING			
Bit Size			
From			
To			
Casing/Tubing Size			
Weight			
Grade			
From			
To			
Maximum Recorded Temperatures			
Logger On Bottom			
Unit Number	Location		
Recorded By			
Witnessed By			

DEPTH SUMMARY LISTING

Date Created: 21-NOV-2005 12:08:00

Depth System Equipment

Depth Measuring Device	Tension Device	Logging Cable
Type: IDW-H Serial Number: 797 Calibration Date: 01-May-2005 Calibrator Serial Number: 1009 Calibration Cable Type: 2-32ZT Wheel Correction 1: -3 Wheel Correction 2: 2	Type: CMTD-C Serial Number: 1037 Calibration Date: 22 Sep 05 Calibrator Serial Number: 57144 Calibration Gain: 1.29 Calibration Offset: 777.00	Type: 2-32ZT Serial Number: 22372 Length: 4799.99 M Conveyance Method: Wireline Rig Type: Offshore_Fixed

Depth Control Parameters

Log Sequence:	Subsequent Trip To the Well
Reference Log Name:	Solar Log
Reference Log Run Number:	Unknown
Reference Log Date:	25 Oct 2002

Depth Control Remarks

1.
2.
3.
4.
5.
6.

DISCLAIMER

THE USE OF AND RELIANCE UPON THIS RECORDED-DATA BY THE HEREIN NAMED COMPANY (AND ANY OF ITS AFFILIATES, PARTNERS, REPRESENTATIVES, AGENTS, CONSULTANTS AND EMPLOYEES) IS SUBJECT TO THE TERMS AND CONDITIONS AGREED UPON BETWEEN SCHLUMBERGER AND THE COMPANY, INCLUDING: (a) RESTRICTIONS ON USE OF THE RECORDED-DATA; (b) DISCLAIMERS AND WAIVERS OF WARRANTIES AND REPRESENTATIONS REGARDING COMPANY'S USE OF AND RELIANCE UPON THE RECORDED-DATA; AND (c) CUSTOMER'S FULL AND SOLE RESPONSIBILITY FOR ANY INFERENCE DRAWN OR DECISION MADE IN CONNECTION WITH THE USE OF THIS RECORDED-DATA.

OTHER SERVICES1 OS1: MPBT OS2: DB-TT OS3: OS4: OS5:
REMARKS: RUN NUMBER 1
Log correlated to Solar log dated 25 Oct 2005, provided by the client.
Objective: To perforate the well at 3345.2m to 3346.5m MDKB using 2 1/8" Enerjet gun loaded with PowerSpiral charges. Before perforating, obtain static FBHP and FBHT. After perforating, flow well for 15min to obtain FBHP, FBHT and also for well clean up. Station FBHP: 3334m; FBHT: 106degC

Static: FBHP = 3324psi, FBHT = 106degC
Flowing: FBHP = 3319psi, FBHT = 107degC

API Data: PowerSpiral charges, UN 0441
Penetration: 27.3"
Entrance Hole: 0.25 "

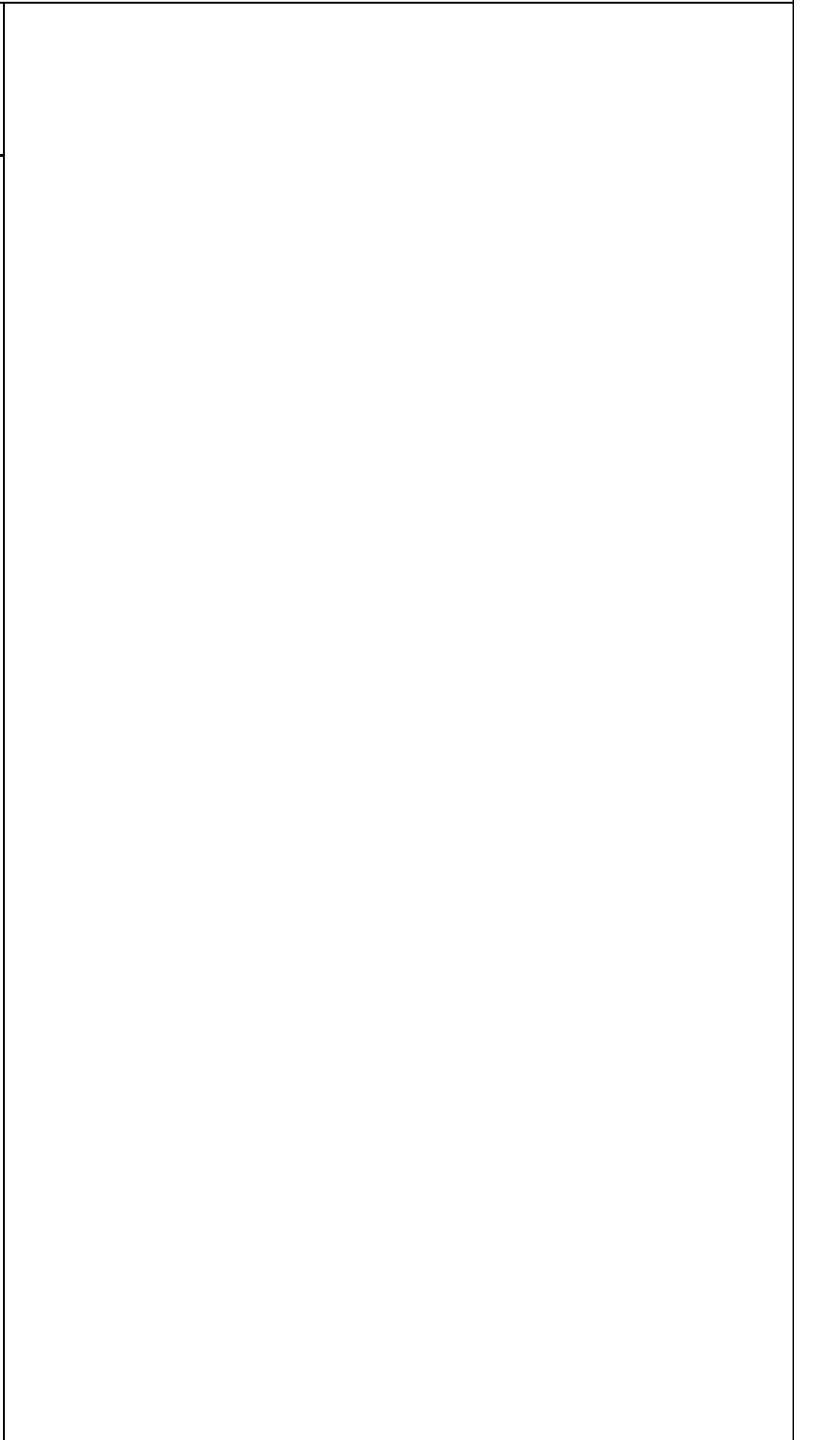
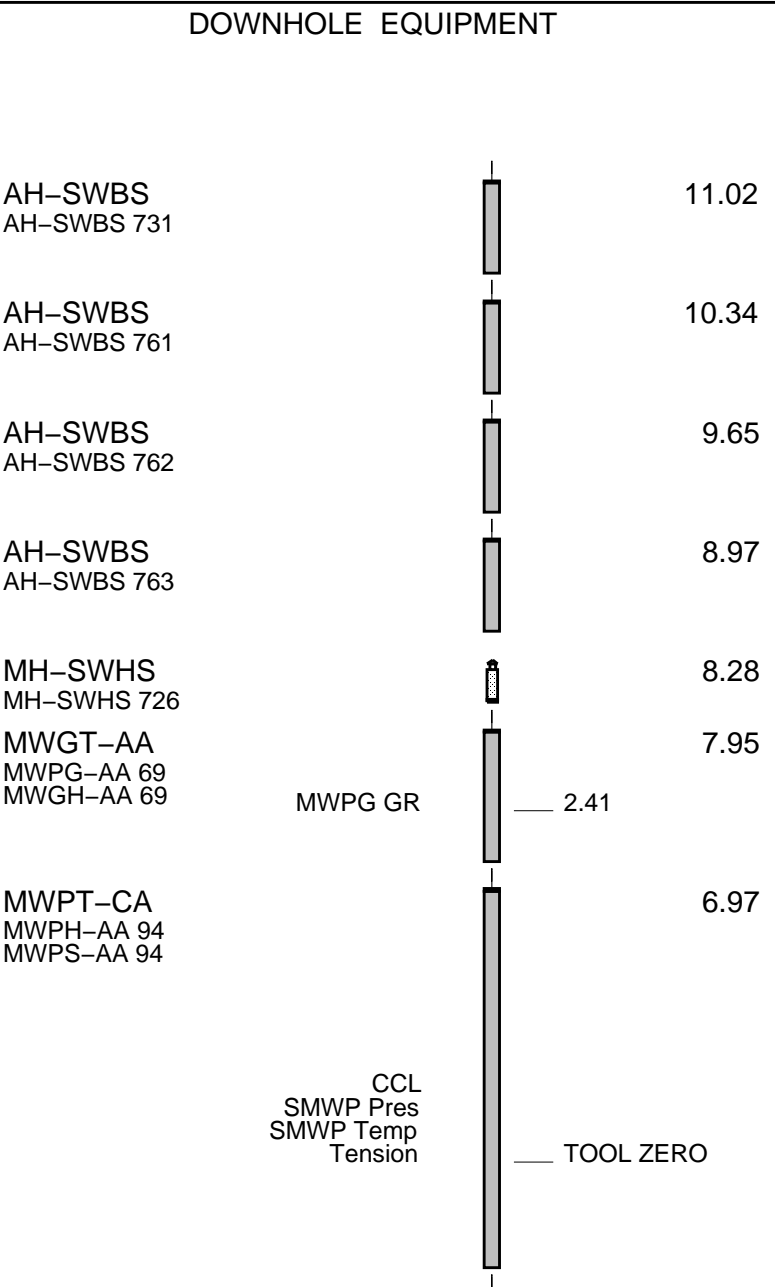
Specialist: Paul Tarrant & Joel Hogan
Operators: Eddy Mezenberg, Jakob Annear
Performed by Schlumberger

RUN 1			RUN 2		
PROGRAM VERSION: FLUID LEVEL:			PROGRAM VERSION: FLUID LEVEL:		
LOGGED INTERVAL	START	STOP	LOGGED INTERVAL	START	STOP

EQUIPMENT DESCRIPTION					
RUN 1			RUN 2		

SURFACE EQUIPMENT


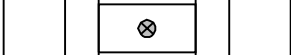




MWPM-AA

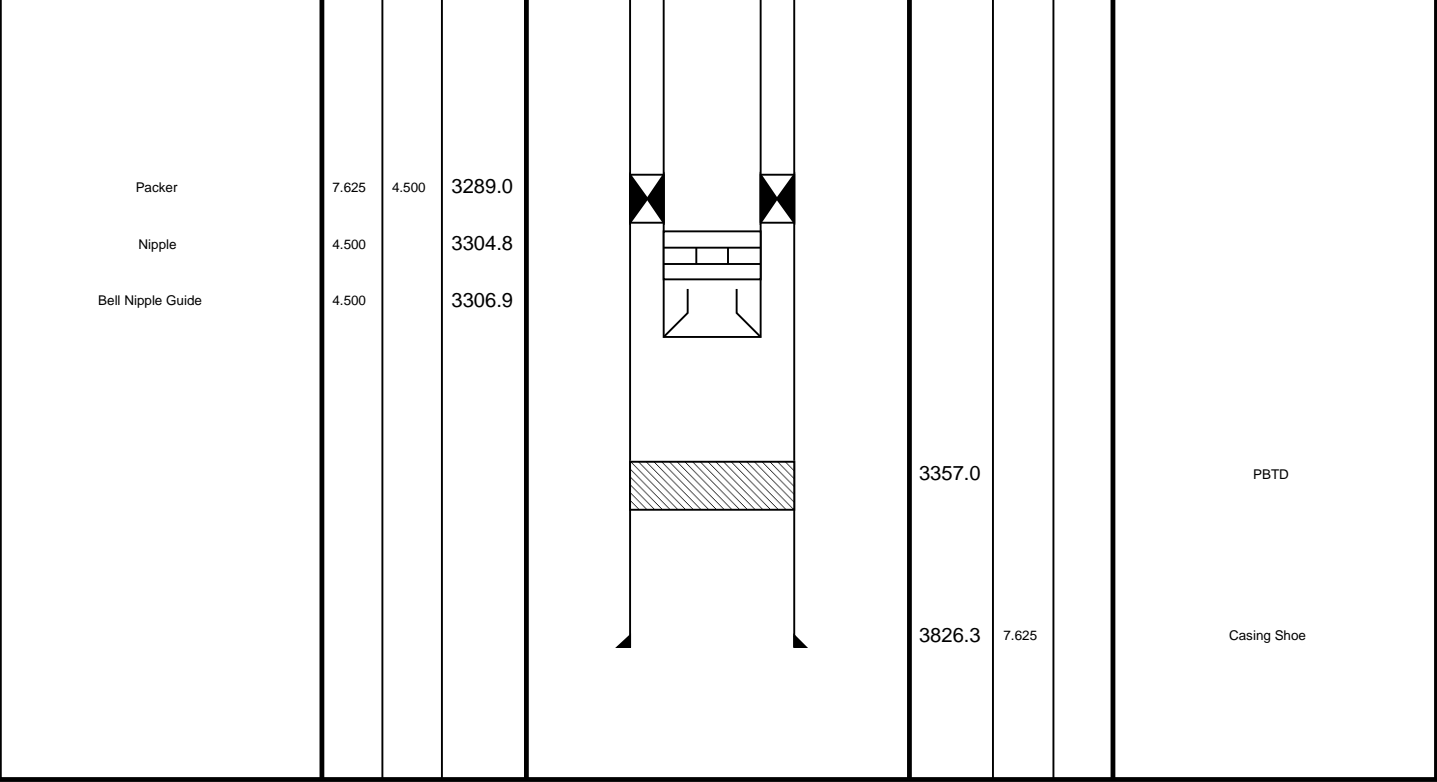


4.15
3.85
3.54
3.05
2.74

TOOL BOTTOM

Rig Name:	Flounder
Reference Datum:	Kelly Bushing
Elevation:	40.8 m

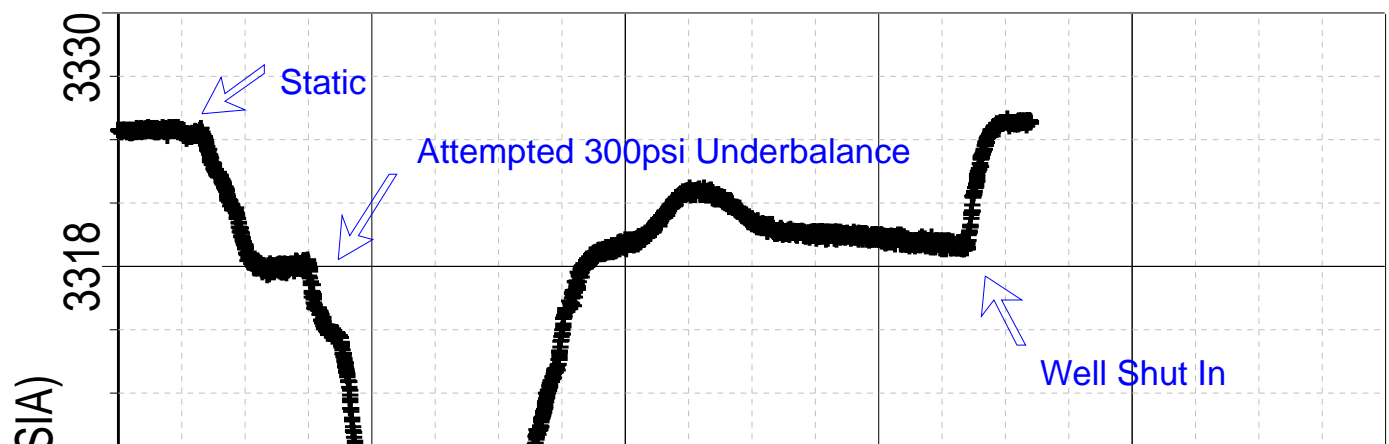
Production String		(in)	(m)	Well Schematic		(m)	(in)	Casing String
	OD	ID	MD			MD	OD	ID
Tubing Hanger Tubing	13.375 4.500	4.500	19.3 19.3			20.4 20.4	13.375 13.375	7.625
Shutin Valve	4.500		450.1					
Gas Lift Mandrel	4.500		950.5			750.0	13.375	
Gas Lift Mandrel	4.500		1660.7					
Gas Lift Mandrel	4.500		1814.2					
								

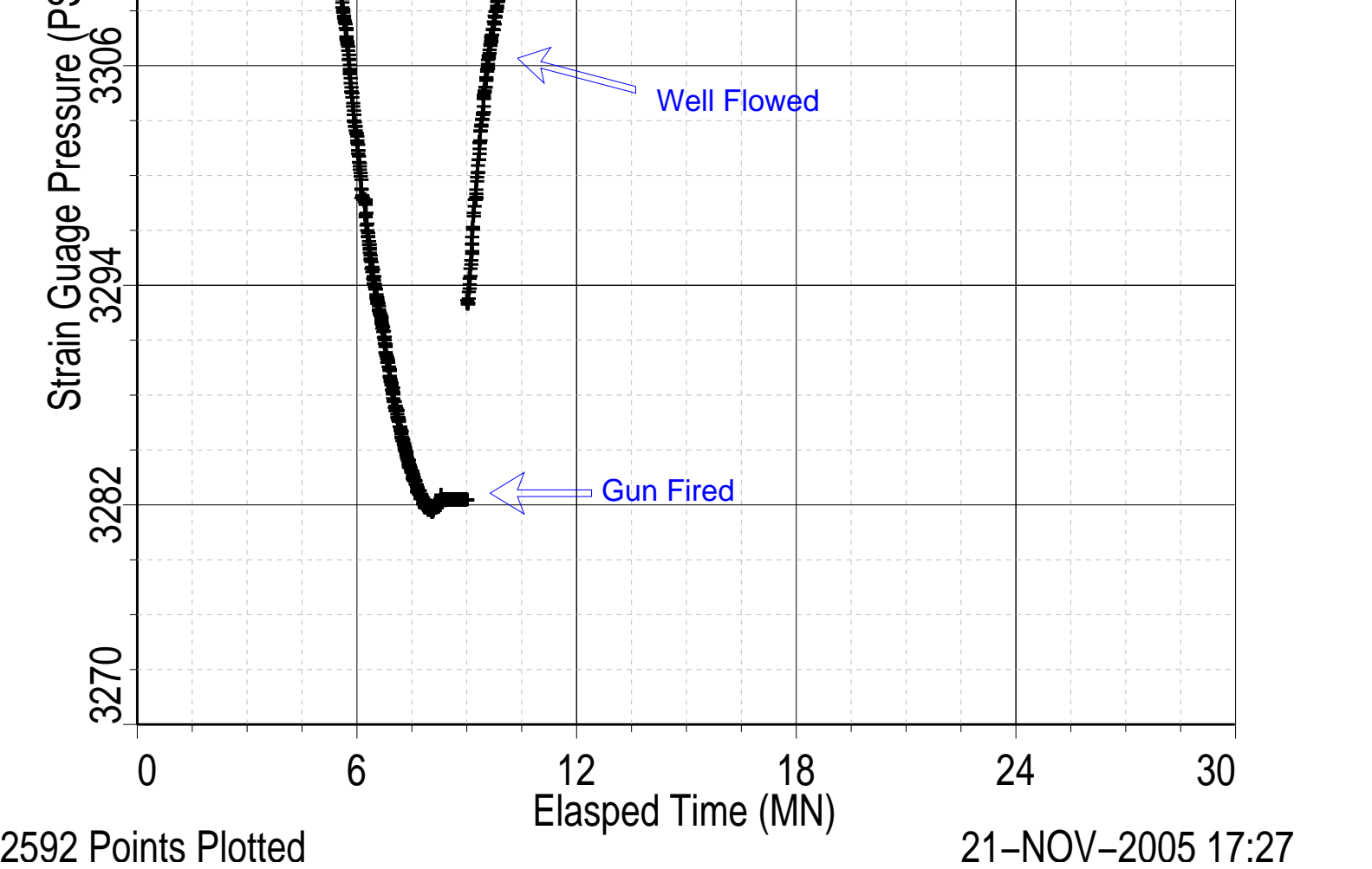


MWPT 2 1/8" Enerjet Gun
Station Log

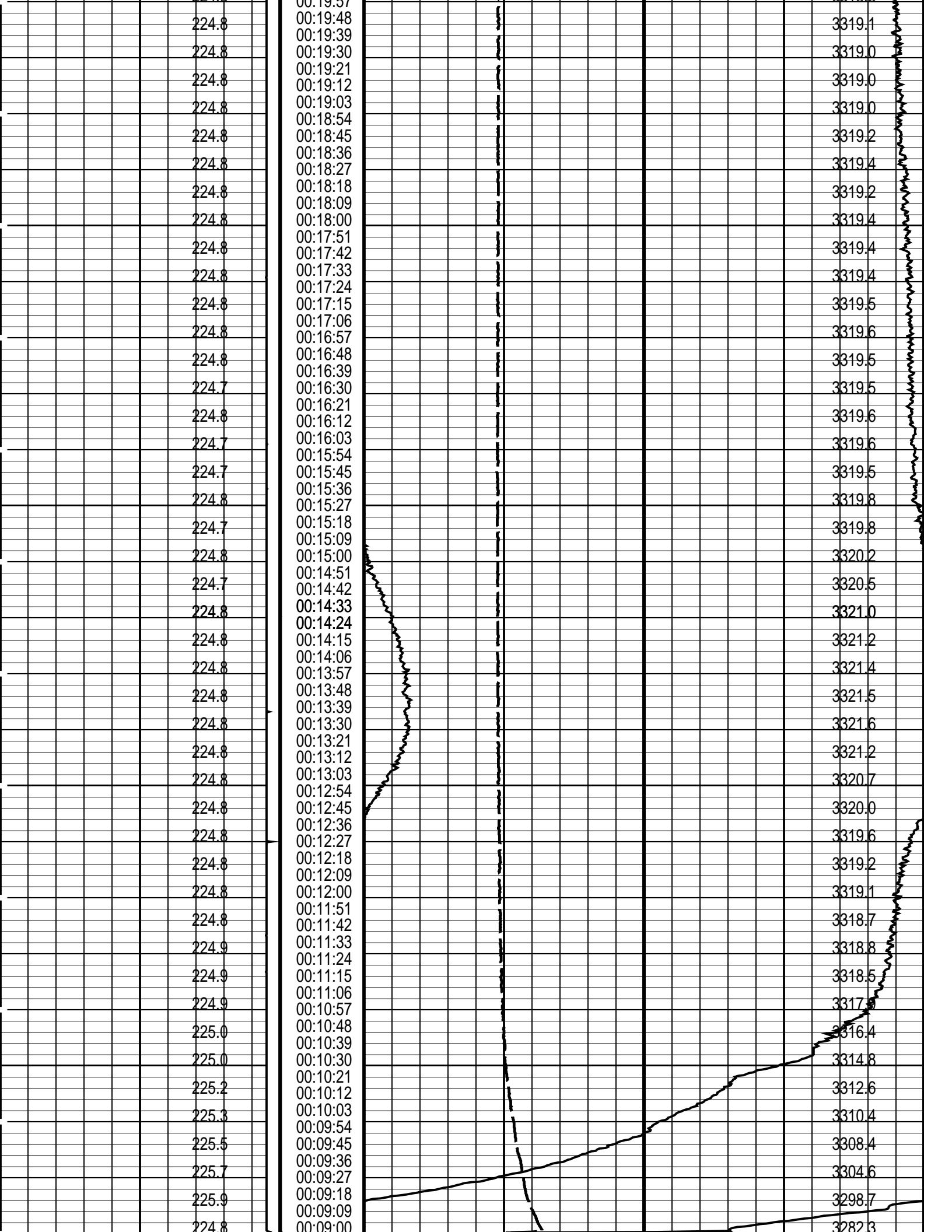
MAXIS Field Log

Index: 19964.4 – 26545.5 M



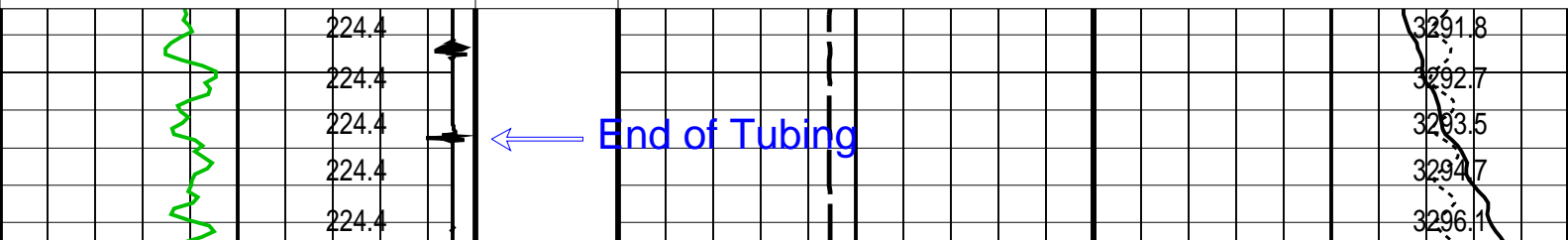


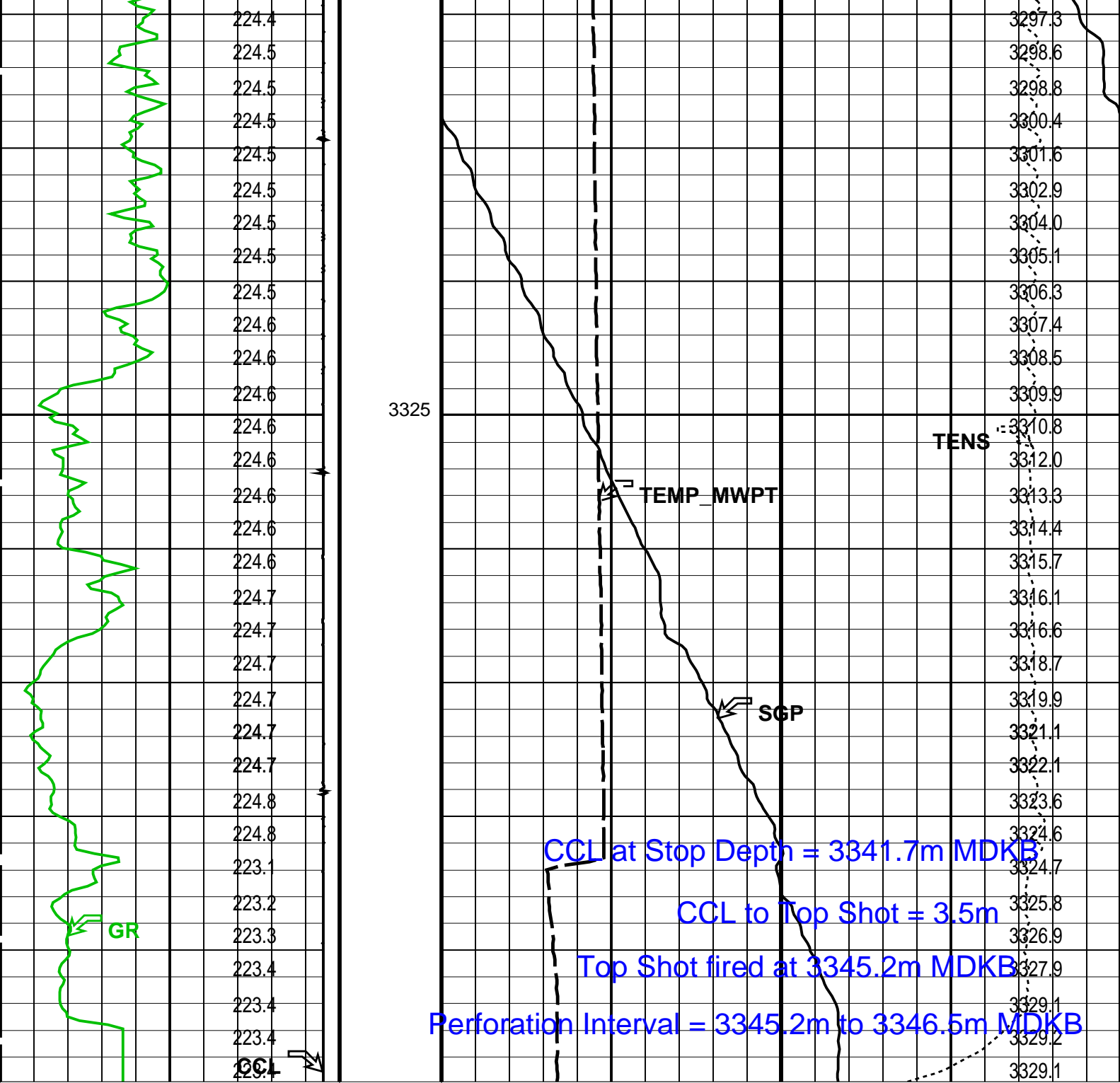
Output DLIS Files									
DEFAULT		PERFO_030LTP		FN:29		PRODUCER		21-Nov-2005 16:56 3341.7 M 3.3 M	
OP System Version: 13C0-300									
MCM									
MWP_GUN		SRC-2820-ASFS-WPP_t			MWPT-CA		SRC-2820-ASFS-WPP_t		
MWGT-AA		SRC-2820-ASFS-WPP_t							
PIP SUMMARY									
Time Mark Every 60 S									
		Temperature (TEMP_MWPT_SL) (DEGF)			Pressure (SGPA_SL) (PSIA)				
CCL From CCL to T1		Firing Sequence State (FSS_SL) (----)	Temperature (TEMP_MWPT_SL) (DEGF)						
		0 1024	0 20						
Casing Collar Locator (CCL_SL)		Elapsed Time (ETIM) (S)	Strain Gauge Pressure (SGP_SL) (PSIA)						
-19 (----) 1			0 20						
	224.8	00:21:36	3324.7						
	224.8	00:21:27	3324.9						
	224.8	00:21:18	3324.8						
	224.8	00:21:09	3324.6						
	224.8	00:21:00	3323.6						
	224.8	00:20:51	3321.4						
	224.8	00:20:42	3318.8						
	224.8	00:20:33							
	224.8	00:20:24							
	224.8	00:20:15							
	224.8	00:20:06							
	224.8	00:19:57							



[illegible]

(PSIA)





Casing Collar Locator (CCL) (-----) 1		Strain Gauge Pressure (SGP) (PSIA) 0 50	
Gamma Ray (GR) (GAPI) 0 150		Temperature (TEMP_MWPT) (DEGF) 0 20	
CCL From CCL to T1		Tension (TENS) (LBF) 0 3000	
Temperature (TEMP_MWPT) (DEGF)		Pressure (SGPA) (PSIA)	

PIP SUMMARY

Time Mark Every 60 S

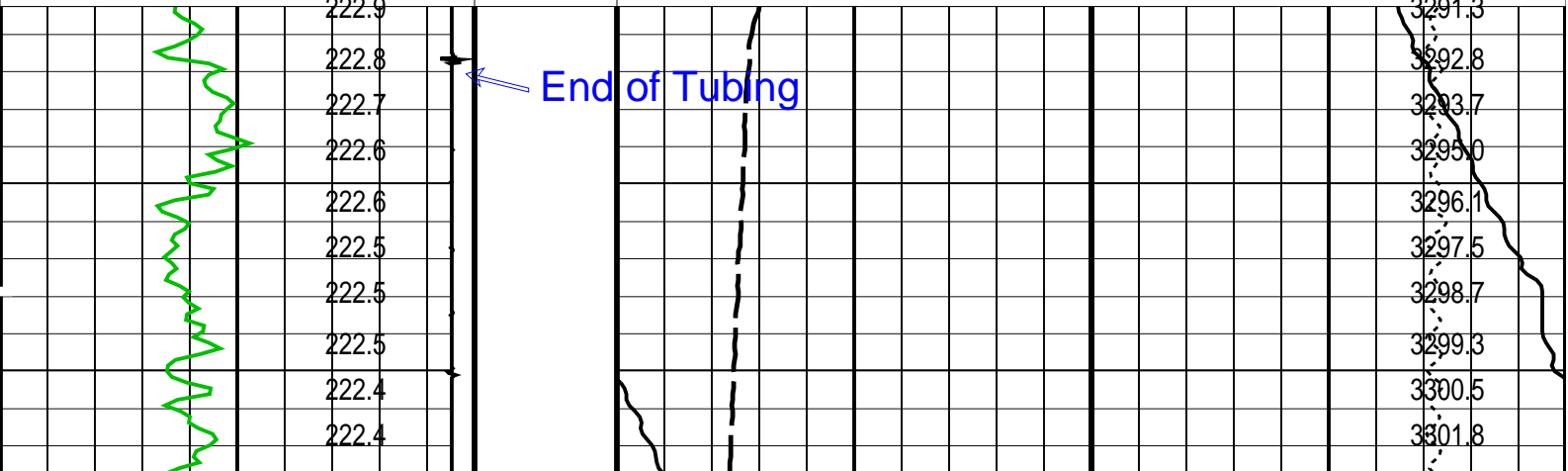
Parameters		
DLIS Name	Description	Value

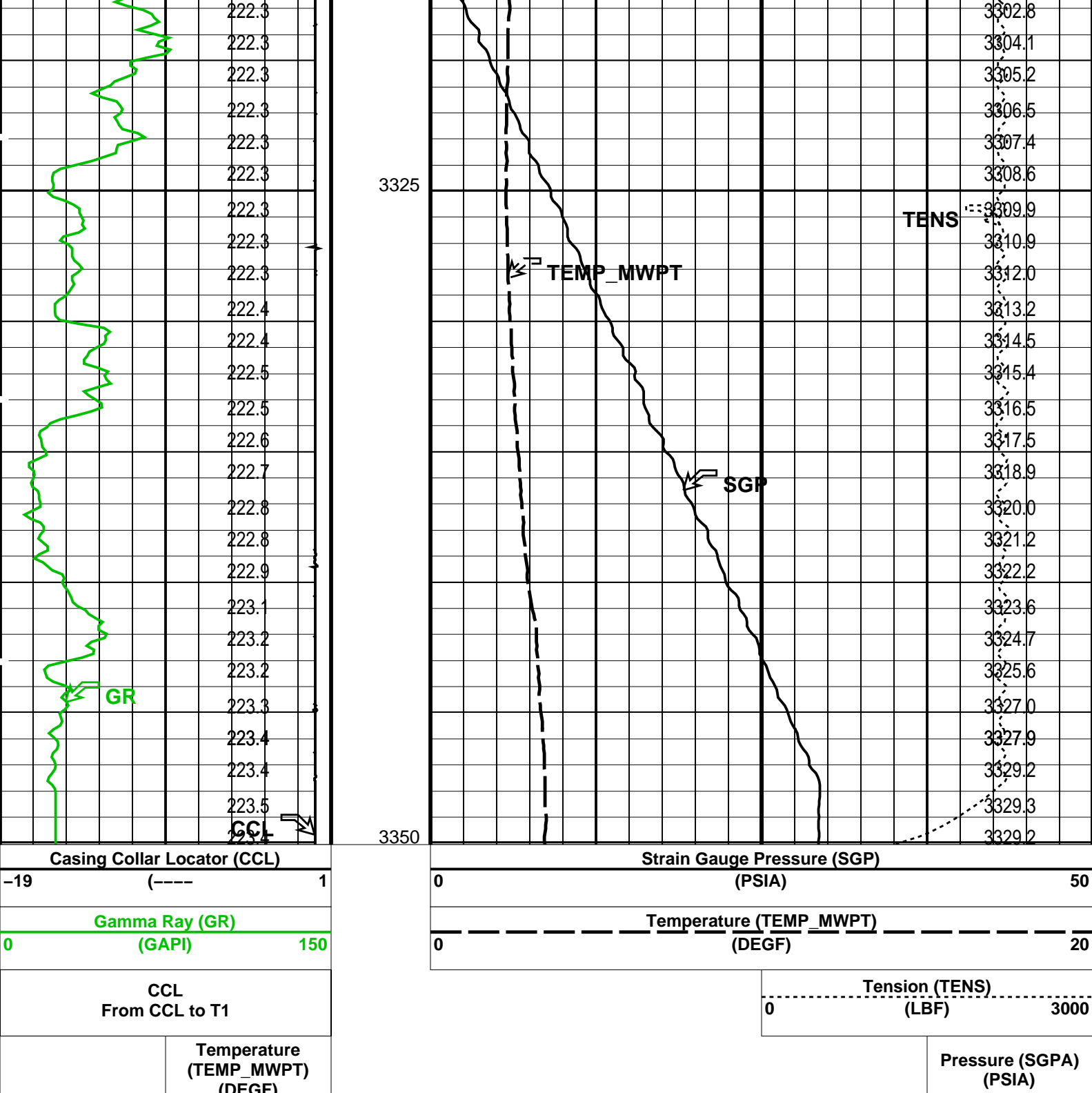
0	DEG
1	G/C3
TEMS	
0.0	DEGC

Output DLIS Files				
DEFAULT	PERFO_029LUP	FN:28	PRODUCER	21-Nov-2005 16:53



DEFAULT	PERFO_028LUP	FN:27	PRODUCER	21-Nov-2005 16:47
<p align="center">OP System Version: 13C0-300</p> <p align="center">MCM</p>				
MWP_GUN	SRC-2820-ASFS-WPP_1		MWPT-CA	SRC-2820-ASFS-WPP_1
MWGT-AA	SRC-2820-ASFS-WPP_1			

[illegible]



PIP SUMMARY

Time Mark Every 60 S

Parameters			
DLIS Name	Description	Value	
MWPT-CA: MEASUREMENT WHILE PERFORATING TOOL			
DEVI_FL_CORR	Deviation Angle for Flow Line Correction	0	DEG
FLD	Flow Line Density	1	G/C3
MWPT_NULL_SOURCE	MWPT NULL Temperature Source	TEMS	
MWPT_NULL_TEMP	MWPT NULL Temperature	0.0	DEGC

Format: MWP Vertical Scale: 1:200 Graphics File Created: 21-Nov-2005 16:47

Output DLIS Files

DEFAULT

PERFO_028LUP

FN:27

PRODUCER

21-Nov-2005 16:47

Company: **ExxonMobil****Schlumberger**Well: **FLA A-21a**Field: **Flounder**Rig: **Prod 4**Country: **Australia**

2 1/8" Enerjet Gun

MWPT

Perforating Record