

Company: Esso Australia Ltd.

Well: WKF W-4
Field: West Kingfish
Rig: ISS Rig 22 / Prod 2 Country: Australia

1 1 1/16" String shot
1 3/8" Owen Split Shot
Scale 1:200

Rig:ISS Rig 22 / Prod 2

Field:West Kingfish

Location:Gippsland Basin

Well:WKF W-4

Company:Esso Australia Ltd.

LOCATION		Elev.: K.B. 34.2 m G.L. -59.4 m D.F. 34.2 m	
Gippsland Basin Bass Strait			
Permanent Datum: _____ Log Measured From: Kelly Bushing _____ Drilling Measured From: Kelly Bushing _____	Mean Sea Level _____ Elev.: 34.2 m -34.2 m above Perm. Datum		
State: Victoria	Max. Well Deviation 58 deg	Longitude 148 06' 15.09" E	Latitude 38 35' 40.26" S

Logging Date	23-Oct-2005		
Run Number	1&2		
Depth Driller	3490 m		
Schlumberger Depth	3490 m		
Bottom Log Interval	3051.6 m		
Top Log Interval	3051.6 m		
Casing Fluid Type	Weighted Brine		
Salinity			
Density	8.55 lbm/gal		
Fluid Level	0 m		
BIT/CASING/TUBING STRING			
Bit Size	8.500 in		
From	0 m		
To	3490 m		
Casing/Tubing Size	3.500 in		
Weight	9.3 lbm/ft		
Grade	N-80		
From	0 m		
To	3332 m		
Maximum Recorded Temperatures			
Logger On Bottom	23-Oct-2005		17:00
Unit Number	3827	VEA	
Recorded By	K. Aung		
Witnessed By	M. Wilson, B. Woodward		

PVT DATA				Run 1	Run 2	Run 3
Oil Density						
Water Salinity						
Gas Gravity						
Bo						
Bw						
1/Bg						
Bubble Point Pressure						
Bubble Point Temperature						
Solution GOR						
Maximum Deviation	58 deg					
CEMENTING DATA						
Primary/Squeeze	Primary					
Casing String No						
Lead Cement Type						
Volume						
Density						
Water Loss						
Additives						
Expected Cement Top						
Logging Date						
Run Number						
Depth Driller						
Schlumberger Depth						
Bottom Log Interval						
Top Log Interval						
Casing Fluid Type						
Salinity						
Density						
Fluid Level						
BIT/CASING/TUBING STRING						
Bit Size						
From						
To						
Casing/Tubing Size						
Weight						
Grade						
From						
To						
Maximum Recorded Temperatures						
Logger On Bottom						
Unit Number						
Recorded By						
Witnessed By						

DEPTH SUMMARY LISTING

Date Created: 12-OCT-2005 20:56:11

Depth System Equipment

Depth Measuring Device	Tension Device	Logging Cable
Type: IDW-H Serial Number: 794 Calibration Date: 31-May-05 Calibrator Serial Number: 1 Calibration Cable Type: 2-32ZT Wheel Correction 1: -6 Wheel Correction 2: -5	Type: CMTD-B/A Serial Number: 1711 Calibration Date: 22-Sep-05 Calibrator Serial Number: 57144 Calibration Gain: 0.97 Calibration Offset: 200.00	Type: 2-32ZT Serial Number: 24031 Length: 6380.07 M Conveyance Method: Wireline Rig Type: Offshore_Fixed

Depth Control Parameters

Log Sequence:	Subsequent Trip To the Well
Reference Log Name:	Solar Log
Reference Log Run Number:	Unknown
Reference Log Date:	Unknown
Subsequent Trip Down Log Correction:	-50000.00 M

Depth Control Remarks

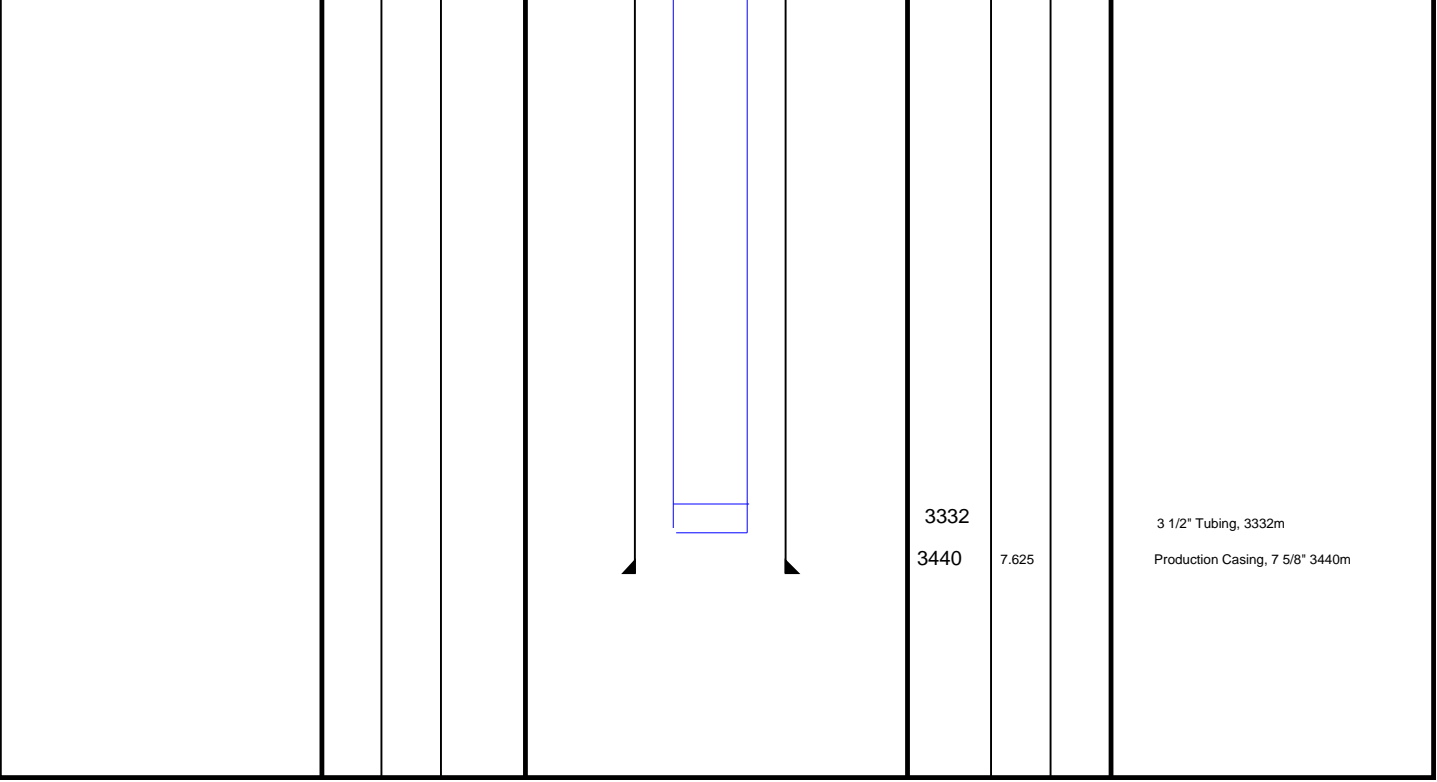
1.
2.
3.
4.
5.
6.

DISCLAIMER

THE USE OF AND RELIANCE UPON THIS RECORDED-DATA BY THE HEREIN NAMED COMPANY (AND ANY OF ITS AFFILIATES, PARTNERS, REPRESENTATIVES, AGENTS, CONSULTANTS AND EMPLOYEES) IS SUBJECT TO THE TERMS AND CONDITIONS AGREED UPON BETWEEN SCHLUMBERGER AND THE COMPANY, INCLUDING: (a) RESTRICTIONS ON USE OF THE RECORDED-DATA; (b) DISCLAIMERS AND WAIVERS OF WARRANTIES AND REPRESENTATIONS REGARDING COMPANY'S USE OF AND RELIANCE UPON THE RECORDED-DATA; AND (c) CUSTOMER'S FULL AND SOLE RESPONSIBILITY FOR ANY INFERENCE DRAWN OR DECISION MADE IN CONNECTION WITH THE USE OF THIS RECORDED-DATA.

OTHER SERVICES1	OTHER SERVICES2
OS1:	OS1:
OS2:	OS2:
OS3:	OS3:
OS4:	OS4:
OS5:	OS5:
REMARKS: RUN NUMBER 1	REMARKS: RUN NUMBER 2
Log correlated to Tubing Tally.	
Objective:	
To reterive the failed 3.5" Tubing.	
String shot was run to clean out the tubing before Split shot.	
Tubing was on tension while shooting Open Split shot	

r tubing was on tension while shooting Owen Split shot.					
Shot at the joint @ 3051.6m.					
Specialists: K. K Aung,					
Operators: P. Battams, A. Hall (days)					
B. Glover, J. Gordon (nights)					
Performed by Schlumberger.					
RUN 1			RUN 2		
SERVICE ORDER #: AUSL 05183646			SERVICE ORDER #:		
PROGRAM VERSION: 13C0-300			PROGRAM VERSION:		
FLUID LEVEL: 0 m			FLUID LEVEL:		
LOGGED INTERVAL	START	STOP	LOGGED INTERVAL	START	STOP
EQUIPMENT DESCRIPTION					
RUN 1			RUN 2		
SURFACE EQUIPMENT			SURFACE EQUIPMENT		
SHM-EA			SHM-EA		
DOWNHOLE EQUIPMENT			DOWNHOLE EQUIPMENT		
<div>MH-22 MH-22</div> <div>EQF-43 EQF-43</div> <div>CCL-L CCL-L</div> <div>SAFE</div> <div>SHM_GUN GUN-String Shot</div>			<div>MH-22 MH-22</div> <div>EQF-41 EQF-41</div> <div>EQF-41 EQF-41</div> <div>EQF-41 EQF-41</div>		
<div><div></div><div></div><div></div><div></div><div></div></div>			<div><div></div><div></div><div></div><div></div><div></div></div>		
<div>6.42</div> <div>5.94</div> <div>4.11</div> <div>3.66</div> <div>3.66</div>			<div>6.02</div> <div>5.54</div> <div>5.54</div> <div>4.32</div> <div>3.10</div>		
<div>Tension CCL</div> <div>TOOL ZERO</div>					



1 11/16" String Shot
Scale 1:200

MAXIS Field Log

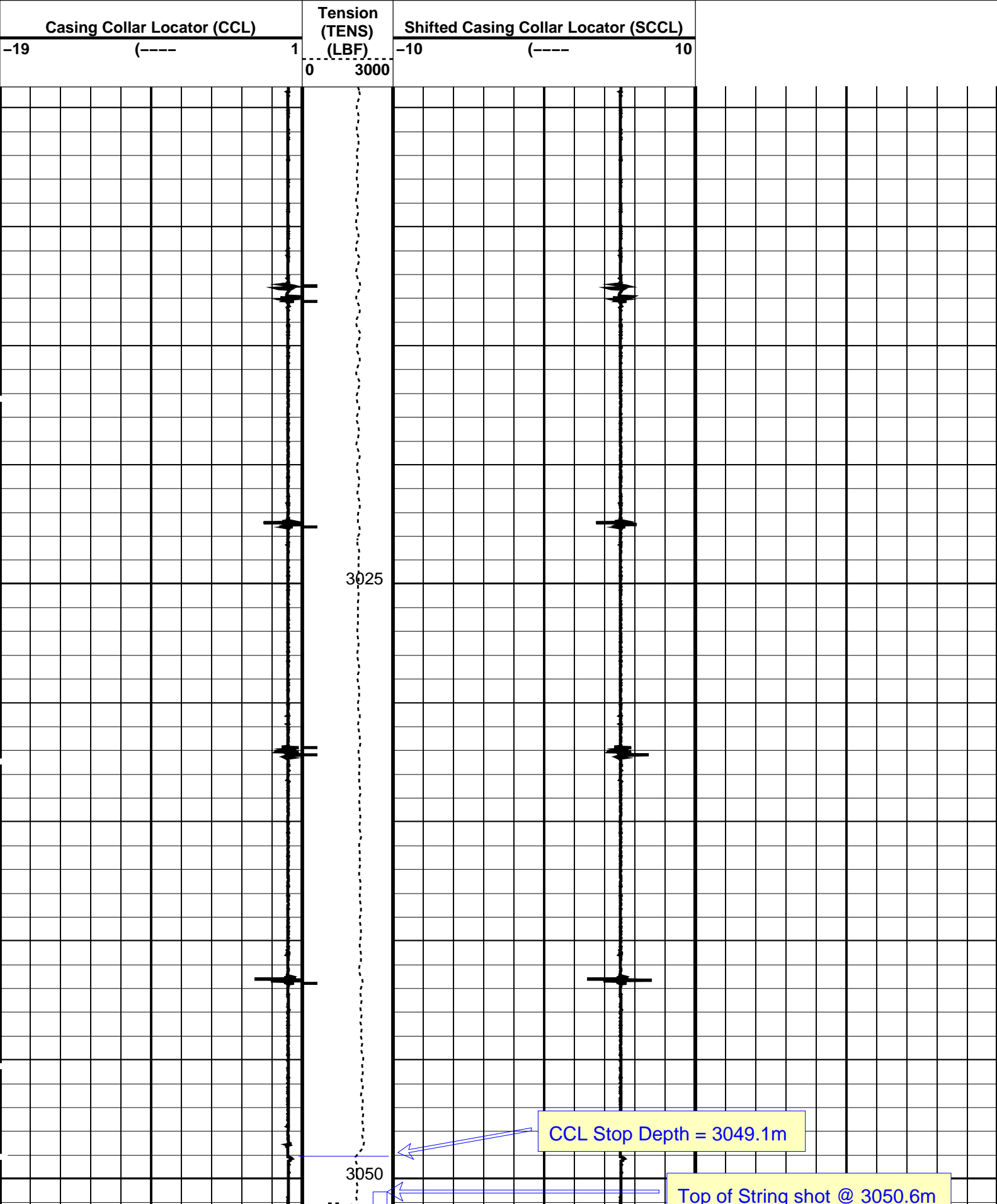
PERFO2 Operational Summary Listing

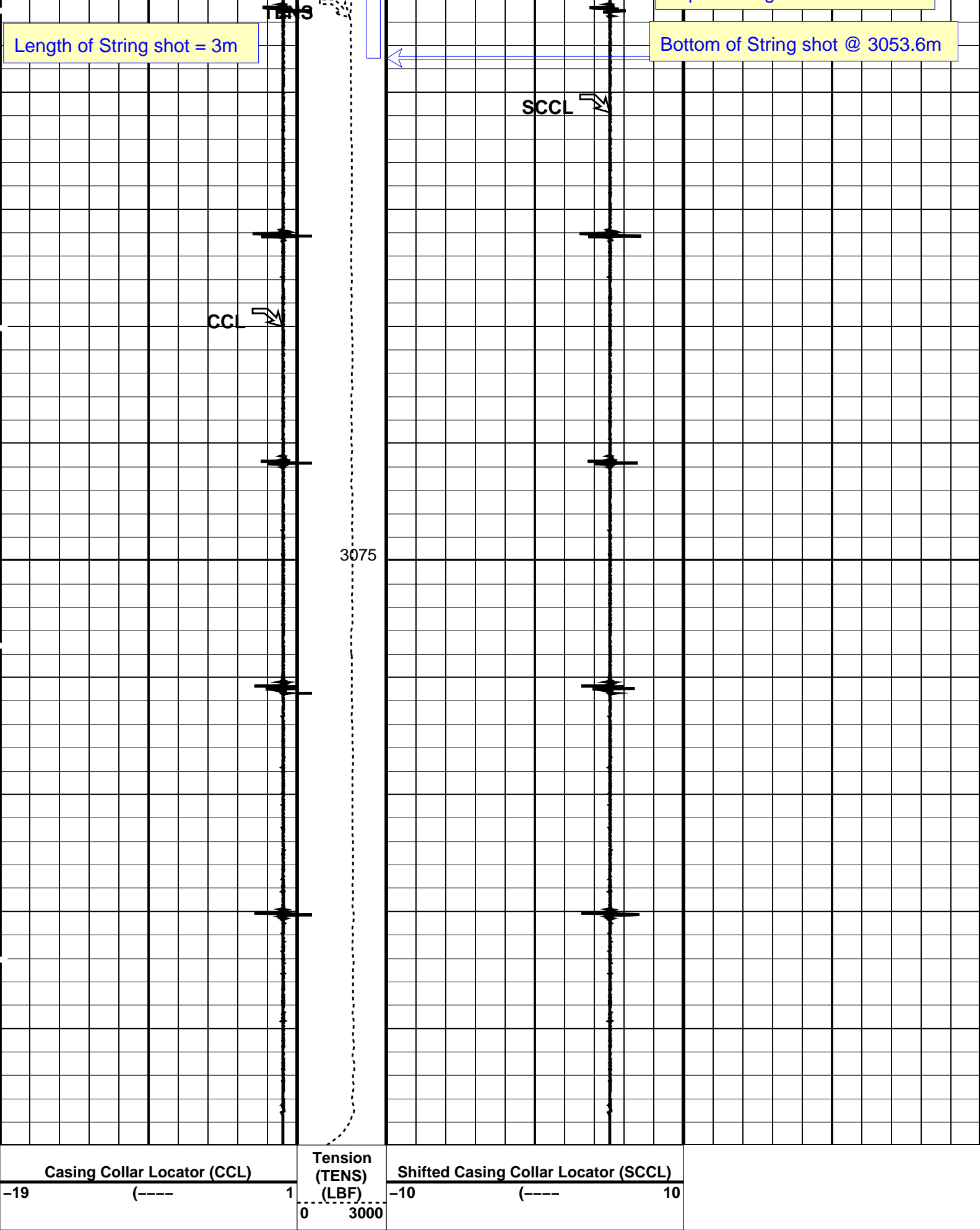
Device	Status	Req Depth (M)	Obs Depth (M)	Time Used
GUN1	Used	3051.6	3051.6	Sun Oct 23 17:31:15 2005

PIP SUMMARY

Time Mark Every 60 S

Casing Collars





Parameters

DLIS Name		Description		Value	
CCL-L: Casing Collar Locator					
CCLD		CCL reset delay		12	IN
CCLT		CCL Detection Level		0.3	V
Format: PERFO_1		Vertical Scale: 1:200		Graphics File Created: 23-Oct-2005 17:24	
OP System Version: 13C0-300					
MCM					
SHM_GUN	PTC-2789-NUCL	SAFE		PTC-2789-NUCL	
CCL-L	13C0-300				
Output DLIS Files					
DEFAULT	PERFO_011LUP	FN:10	PRODUCER	23-Oct-2005 17:24	



Correlation Pass

Scale 1:200

MAXIS Field Log

Company: Esso Australia Ltd.

Well: WKF W-15

Output DLIS Files

DEFAULT

PERFO_010LUP

FN:9

PRODUCER

23-Oct-2005 17:10

3086.3 M

3005.8 M

OP System Version: 13C0-300

MCM

SHM_GUN

PTC-2789-NUCL

SAFE

PTC-2789-NUCL

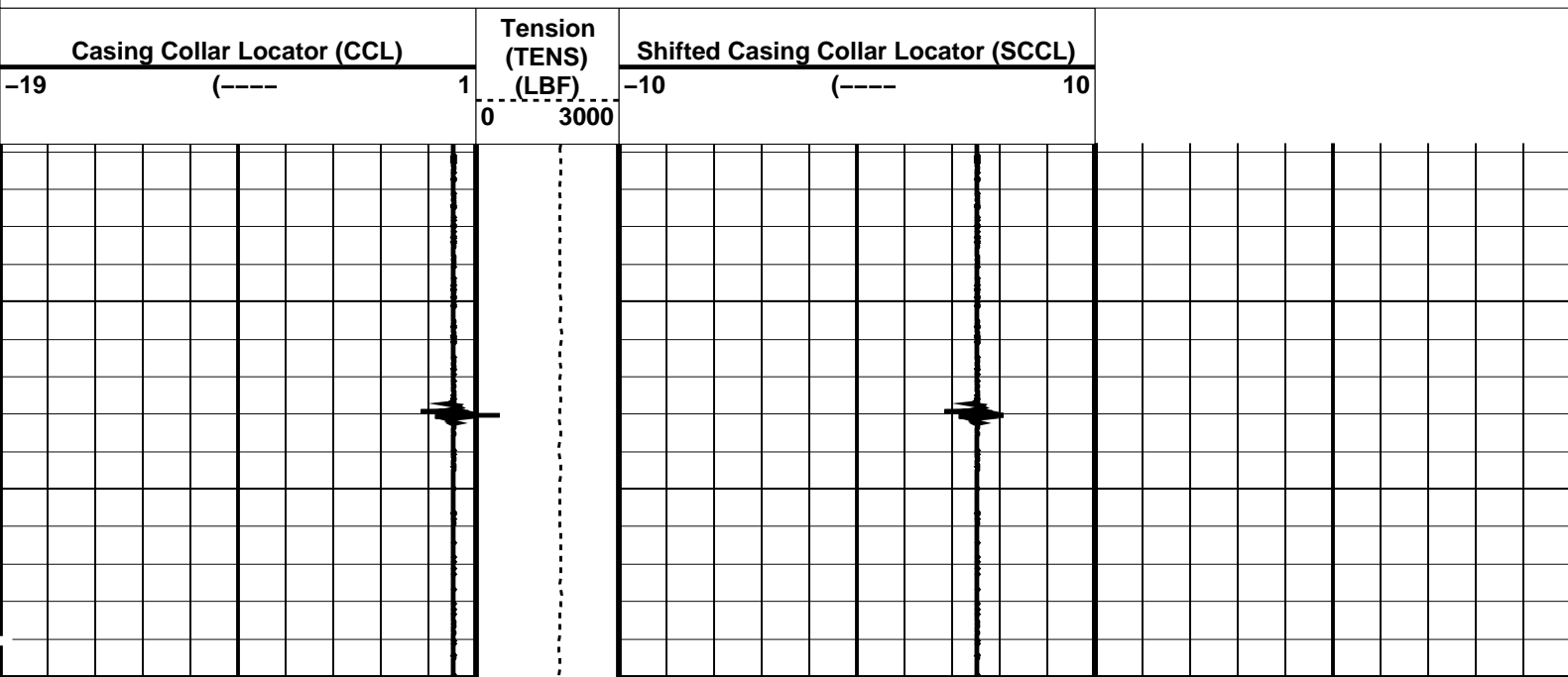
CCL-L

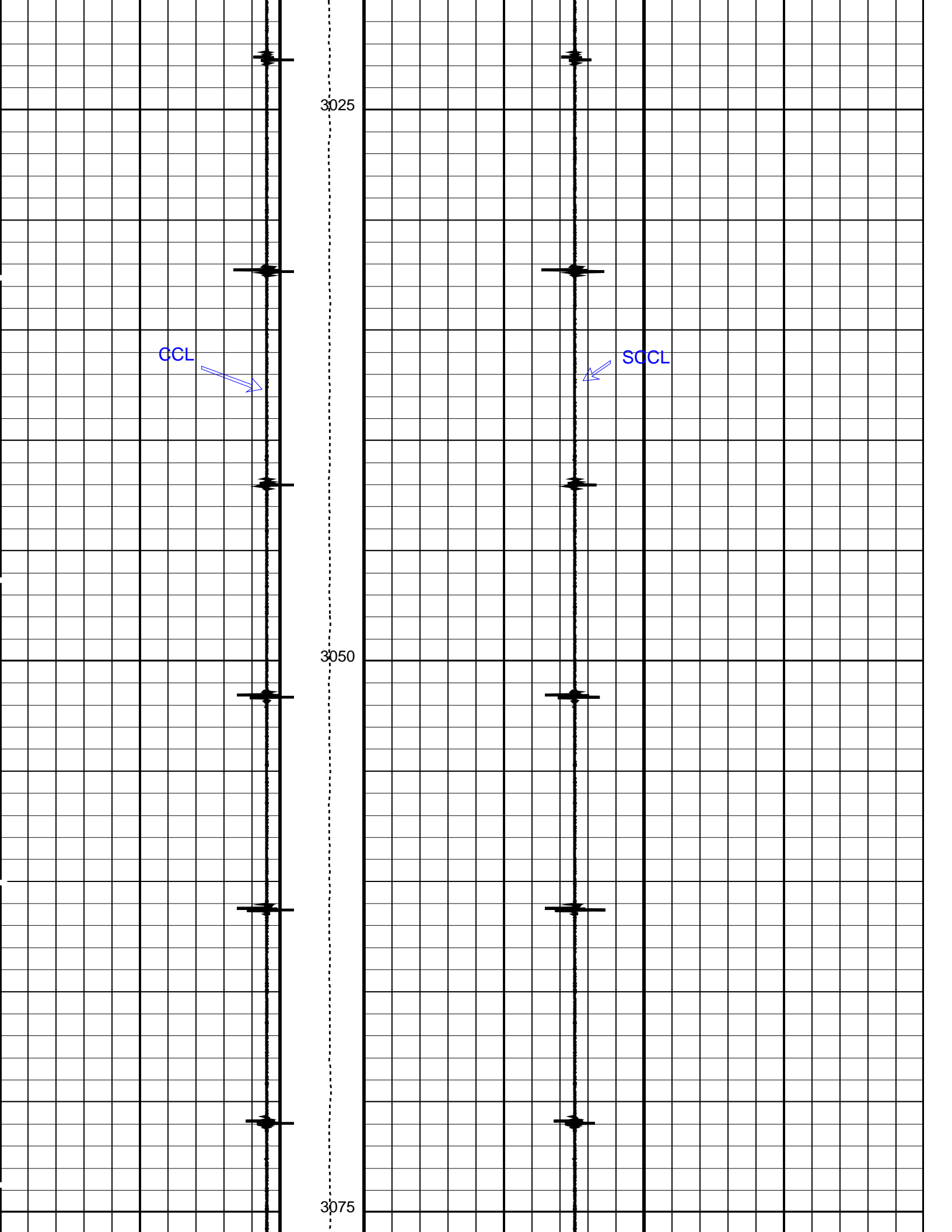
13C0-300

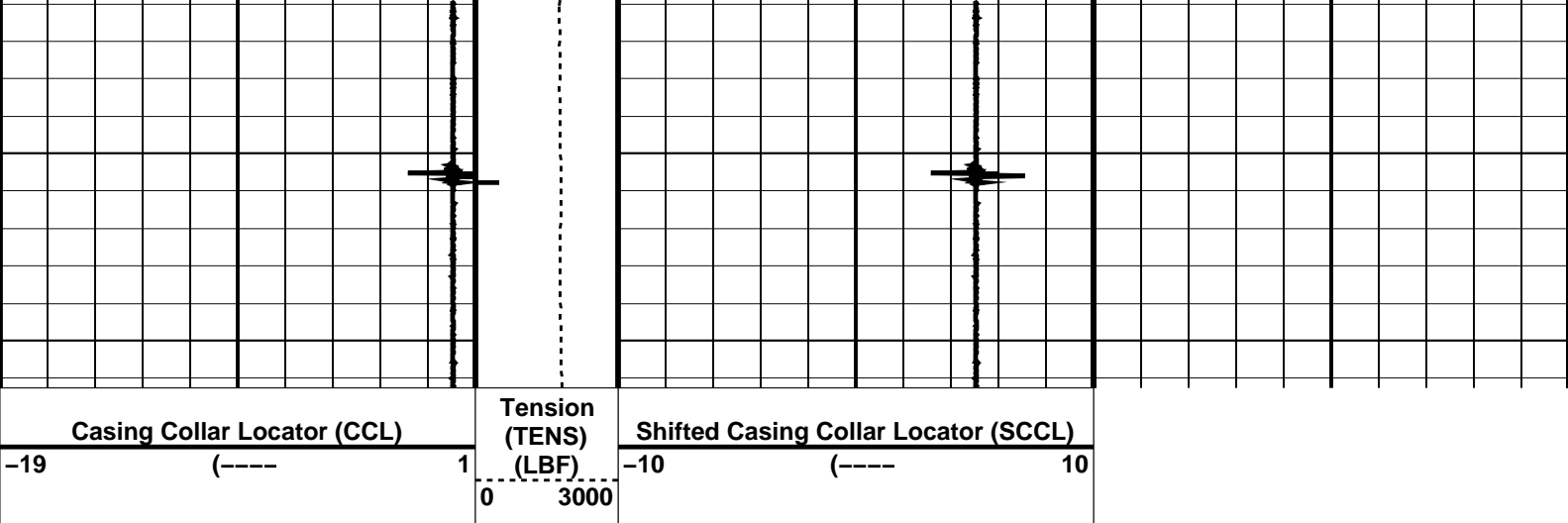
PIP SUMMARY

Time Mark Every 60 S

Casing Collars







PIP SUMMARY

└─ Casing Collars

Time Mark Every 60 S

Parameters		
DLIS Name	Description	Value
CCLD	CCL-L: Casing Collar Locator	12 IN
CCLT	CCL reset delay	0.3 V
CCLT	CCL Detection Level	

Format: PERFO_1 Vertical Scale: 1:200 Graphics File Created: 23-Oct-2005 17:10

OP System Version: 13C0-300

MCM

SHM_GUN	PTC-2789-NUCL	SAFE	PTC-2789-NUCL
CCL-L	13C0-300		

Output DLIS Files			
DEFAULT	PERFO_010LUP	FN:9	PRODUCER 23-Oct-2005 17:10



1 3/8" Owen Split Shot
Scale 1:200

MAXIS Field Log

PERFO2 Operational Summary Listing

Device	Status	Req Depth (M)	Obs Depth (M)	Time Used
GUN1	Used	3051.6	3051.7	Sun Oct 23 21:38:02 2005

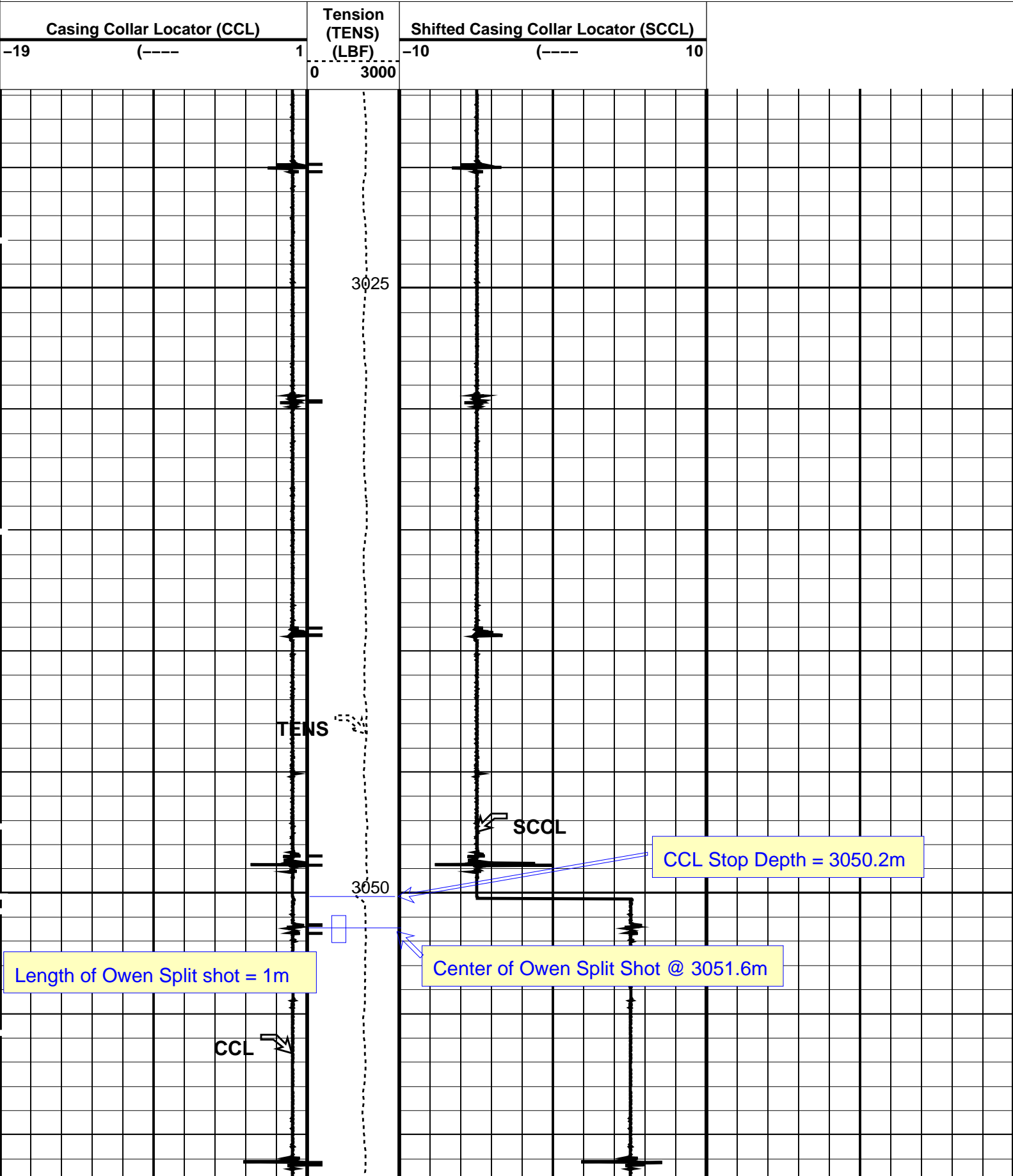
Output DLIS Files					
DEFAULT	PERFO_014LUP	FN:13	PRODUCER	23-Oct-2005 21:21	3107.6 M 3016.8 M

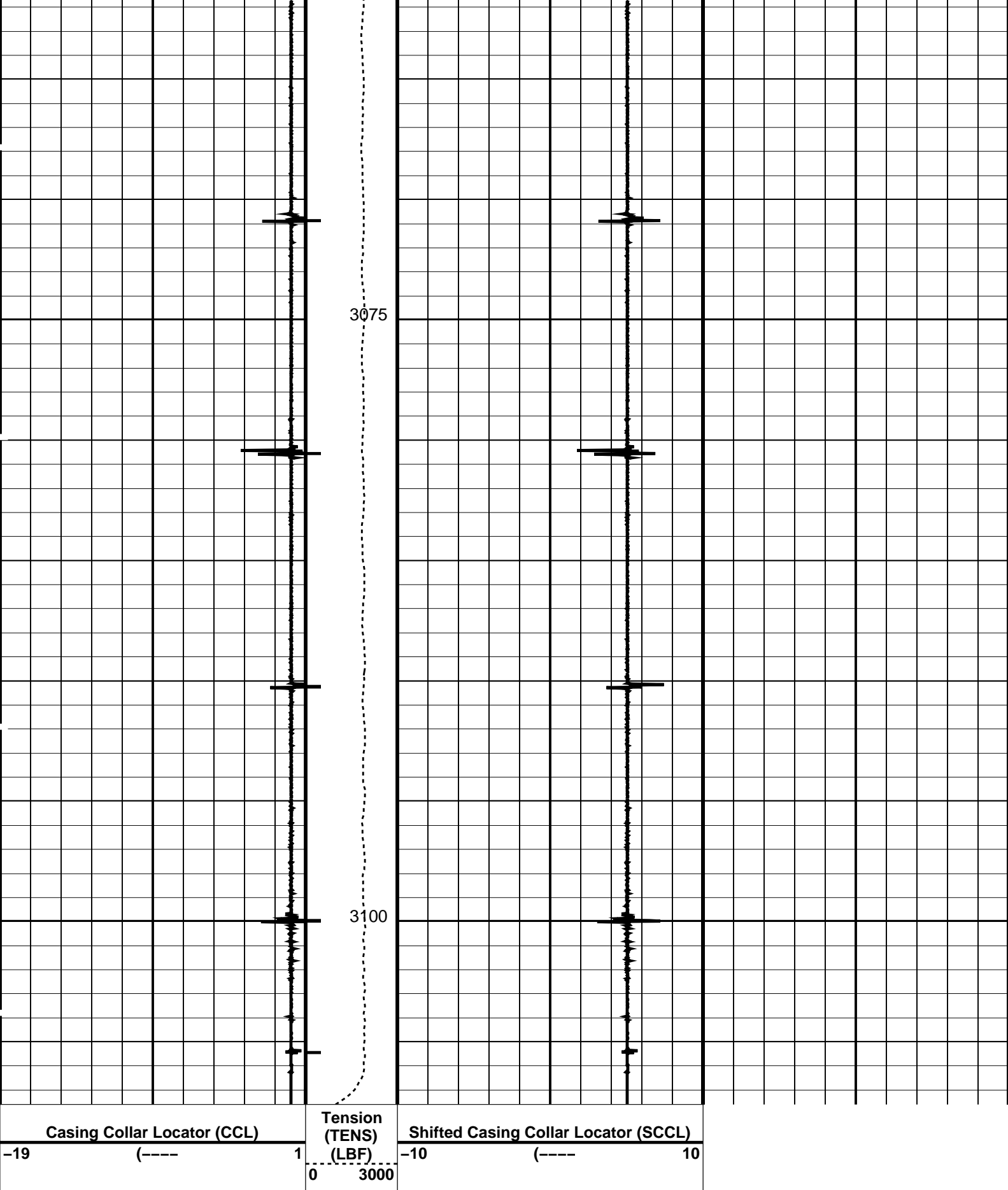
OP System Version: 13C0-300
MCM

SHM_GUN PTC-2789-NUCL CCL-N 13C0-300

PIP SUMMARY

Time Mark Every 60 S





Parameters		
DLIS Name	Description	Value

CCL-N: Casing Collar Locator		12	IN
CCLD	CCL reset delay	0.3	V
CCLT	CCL Detection Level		
Format: PERFO_1	Vertical Scale: 1:200	Graphics File Created: 23-Oct-2005 21:21	
<p align="center">OP System Version: 13C0-300</p> <p align="center">MCM</p>			
SHM_GUN	PTC-2789-NUCL	CCL-N	13C0-300
<p align="center">Output DLIS Files</p>			
DEFAULT	PERFO_014LUP	FN:13	PRODUCER 23-Oct-2005 21:21
<p>Company: Esso Australia Ltd.</p> <p align="right">Schlumberger</p> <p>Well: WKF W-4</p> <p>Field: West Kingfish</p> <p>Rig: ISS Rig 22 / Prod 2</p> <p>Country: Australia</p>			
<p>1 11/16" String shot</p> <p>1 3/8" Owen Split Shot</p> <p>Scale 1:200</p>			