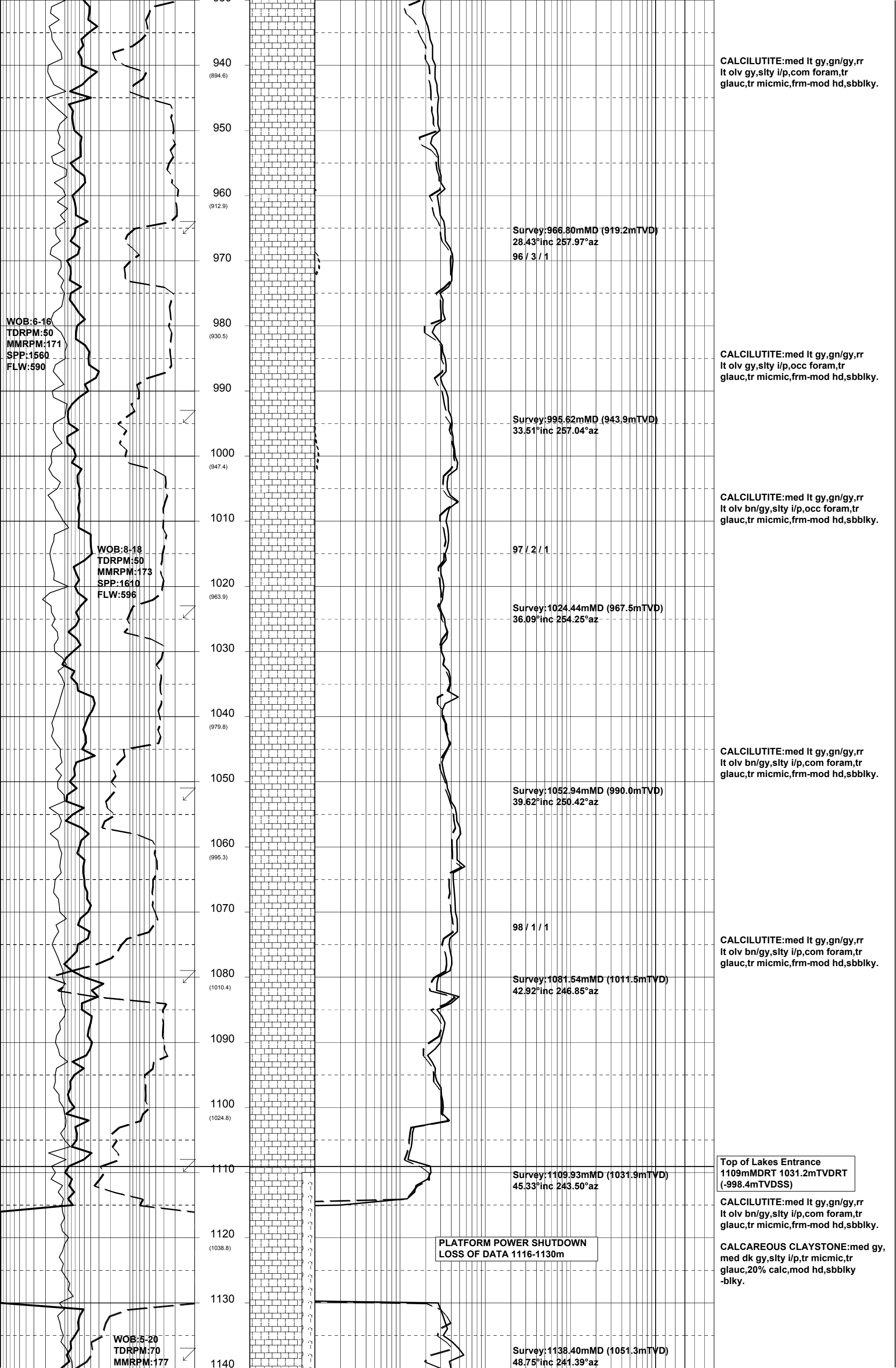
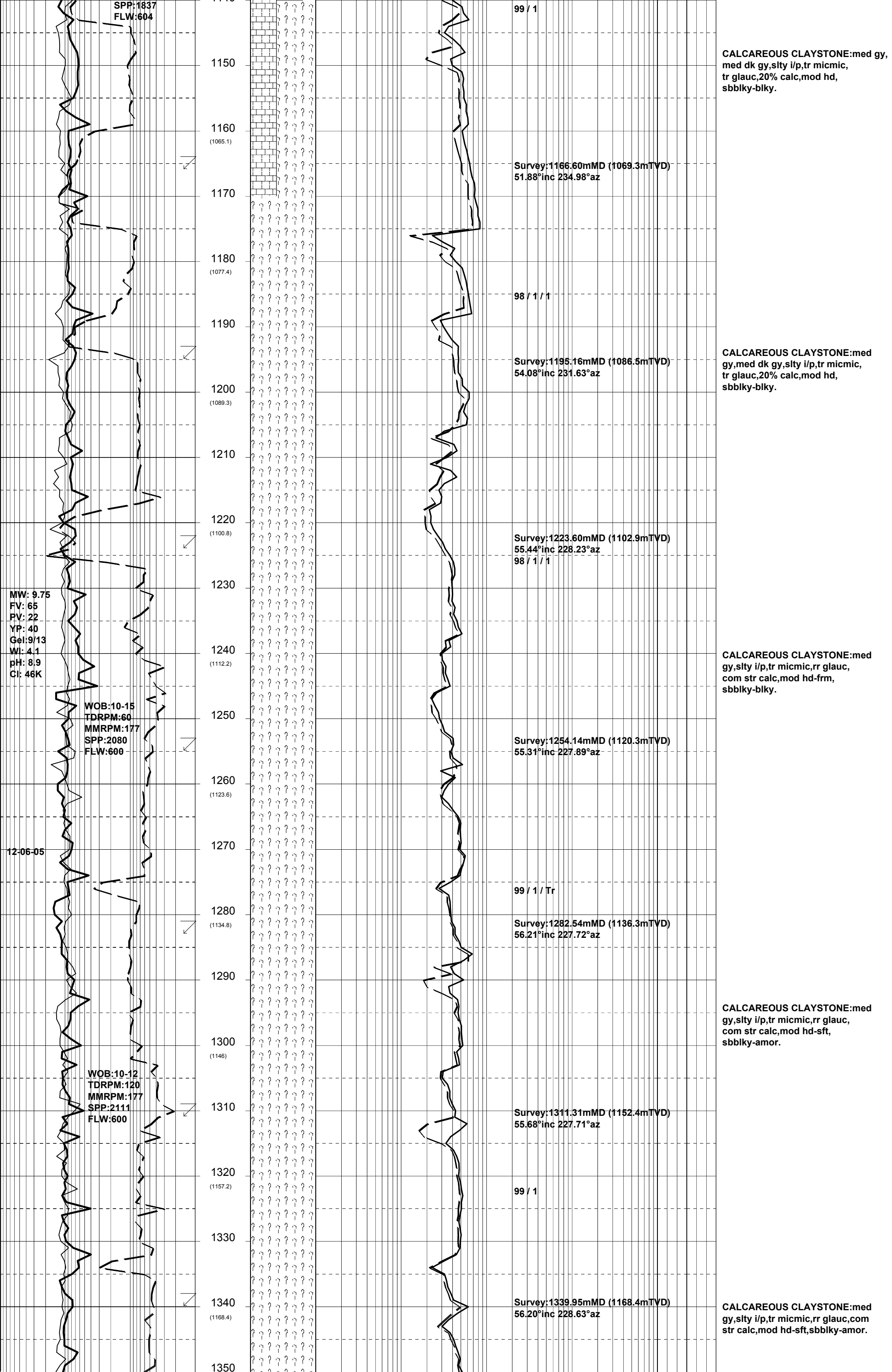
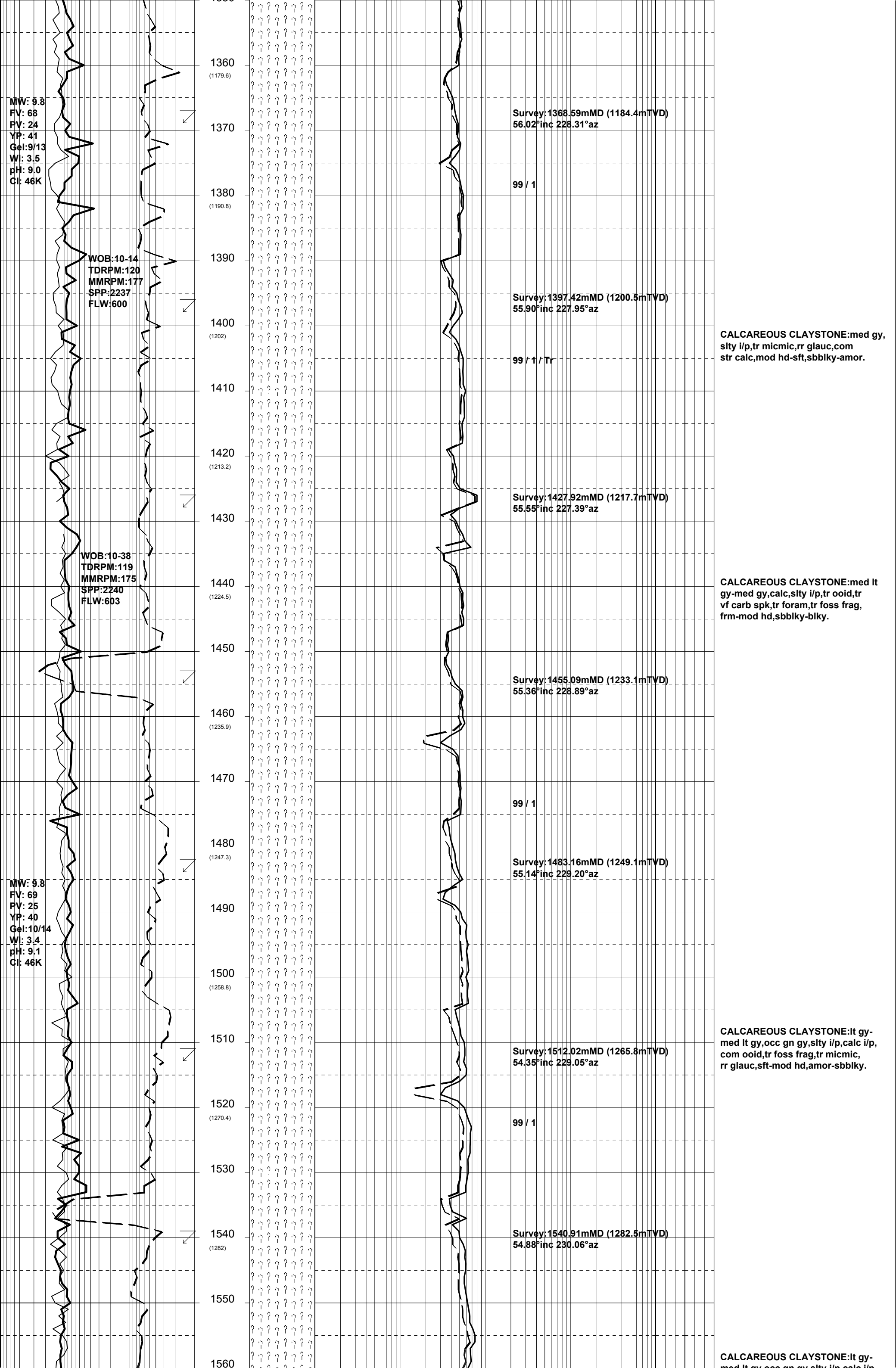




ROP (m/hr)				DEPTH (m) (TVD)	CUTTINGS LITHOLOGY	RESERVAL GAS DATA						CUT FLUOR	DIRECT FLR	LITHOLOGY DESCRIPTIONS and REMARKS					
500	50	5	.5			C1	C2	C3	iC4	nC4	iC5				TG				
WOB (tons)						Total Gas in Units Chromatograph in PPM													
50	25	0				%	.5	5	50	500	5K				100	1K	10K	100K	1000K
MWD Gamma Ray (api)				0	100	200	0	100	100	1K	10K	100K	1000K	good	fair	poor	good	fair	poor
				880															
				890															
11-06-05				900															
				(857.8)															
				910															
				920															
				(876.2)															
				930															

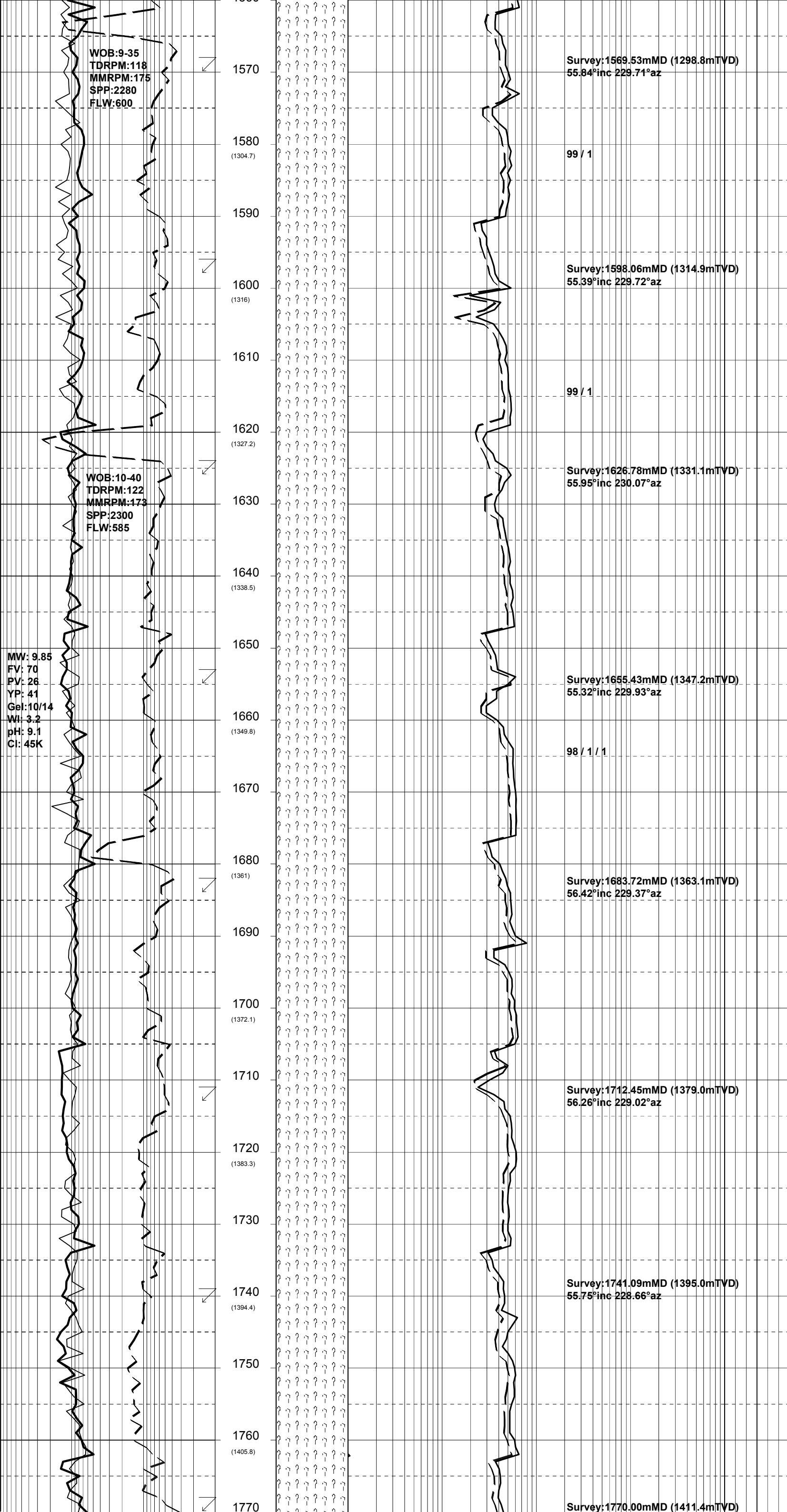


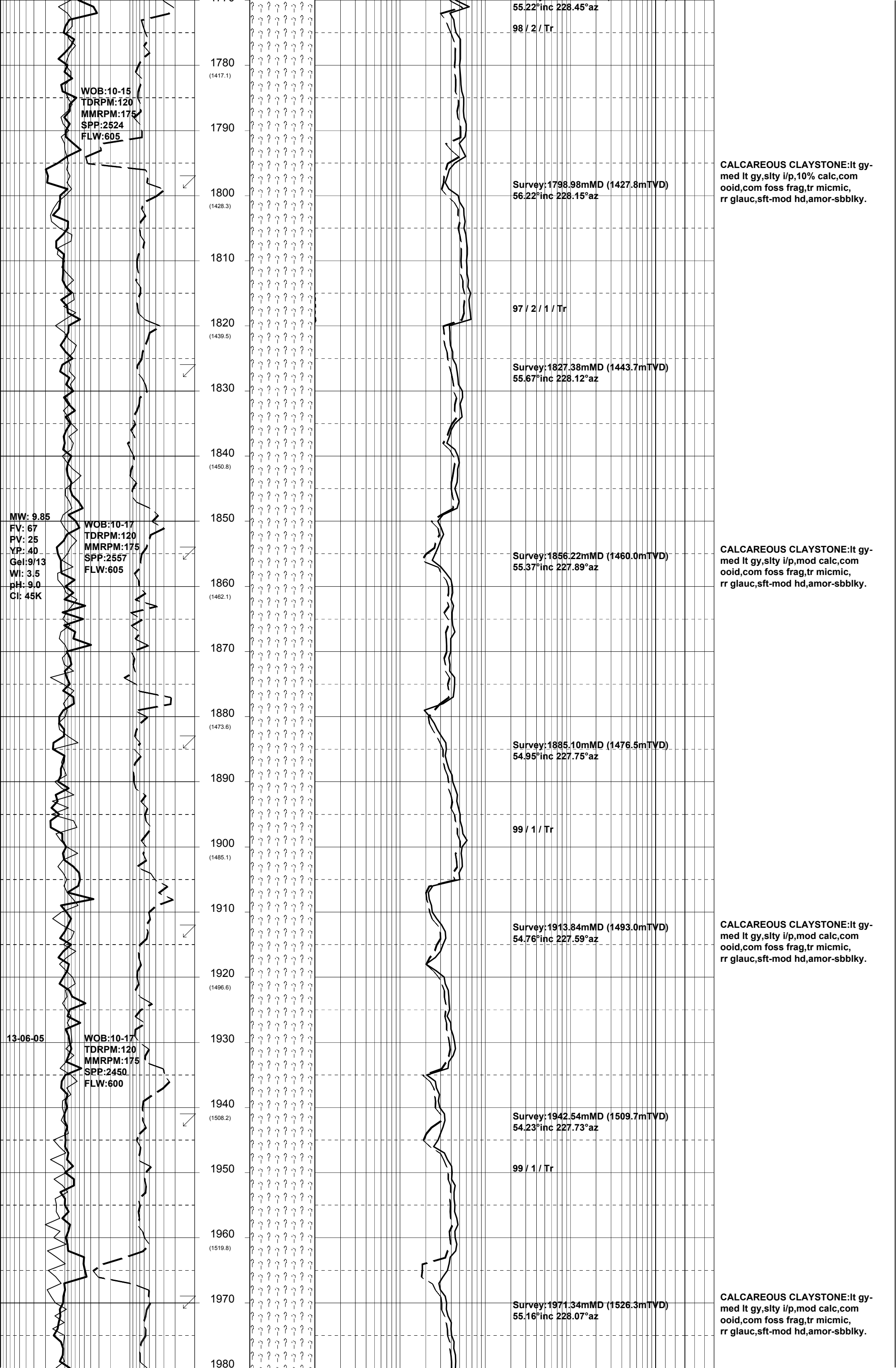


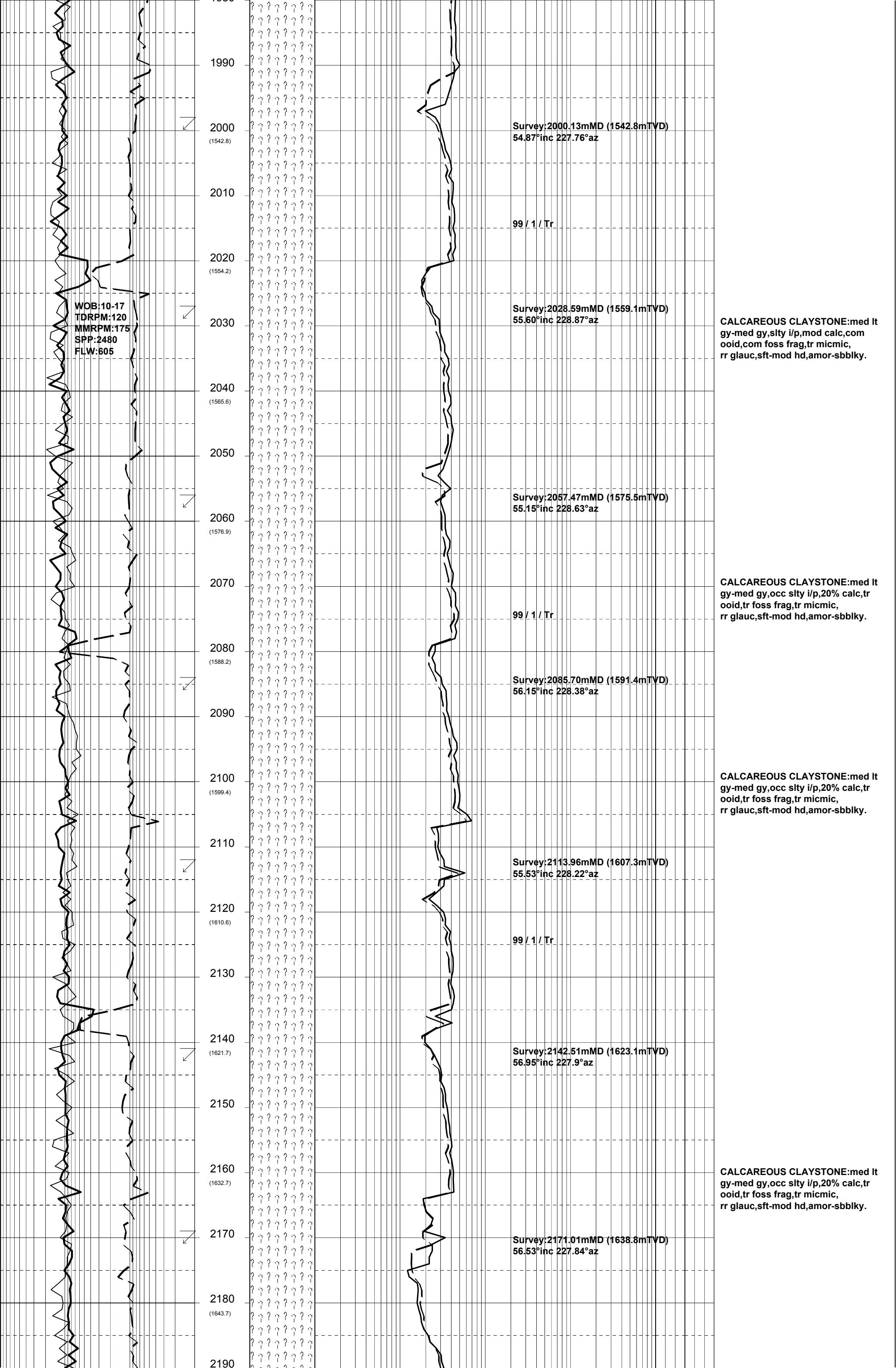


**CALCAREOUS CLAYSTONE:**lt gy-  
med lt gy,occ gn gy,slty i/p,mod calc,  
com ooid,tr foss frag,tr micmic,  
sft-mod hd,amor-sbblky.

**CALCAREOUS CLAYSTONE:**lt gy-  
med lt gy,slty i/p,10% calc,com  
ooid,com foss frag,tr micmic,  
rr glauc,sft-mod hd,amor-sbblky.







WOB:10-17  
TDRPM:120  
MMRPM:175  
SPP:2480  
FLW:605

Survey:2000.13mMD (1542.8mTVD)  
54.87°inc 227.76°az

99 / 1 / Tr

Survey:2028.59mMD (1559.1mTVD)  
55.60°inc 228.87°az

CALCAREOUS CLAYSTONE: med lt  
gy-med gy, slty i/p, mod calc, com  
ooid, com foss frag, tr micmic,  
rr glauc, sft-mod hd, amor-sbblky.

Survey:2057.47mMD (1575.5mTVD)  
55.15°inc 228.63°az

CALCAREOUS CLAYSTONE: med lt  
gy-med gy, occ slty i/p, 20% calc, tr  
ooid, tr foss frag, tr micmic,  
rr glauc, sft-mod hd, amor-sbblky.

Survey:2085.70mMD (1591.4mTVD)  
56.15°inc 228.38°az

CALCAREOUS CLAYSTONE: med lt  
gy-med gy, occ slty i/p, 20% calc, tr  
ooid, tr foss frag, tr micmic,  
rr glauc, sft-mod hd, amor-sbblky.

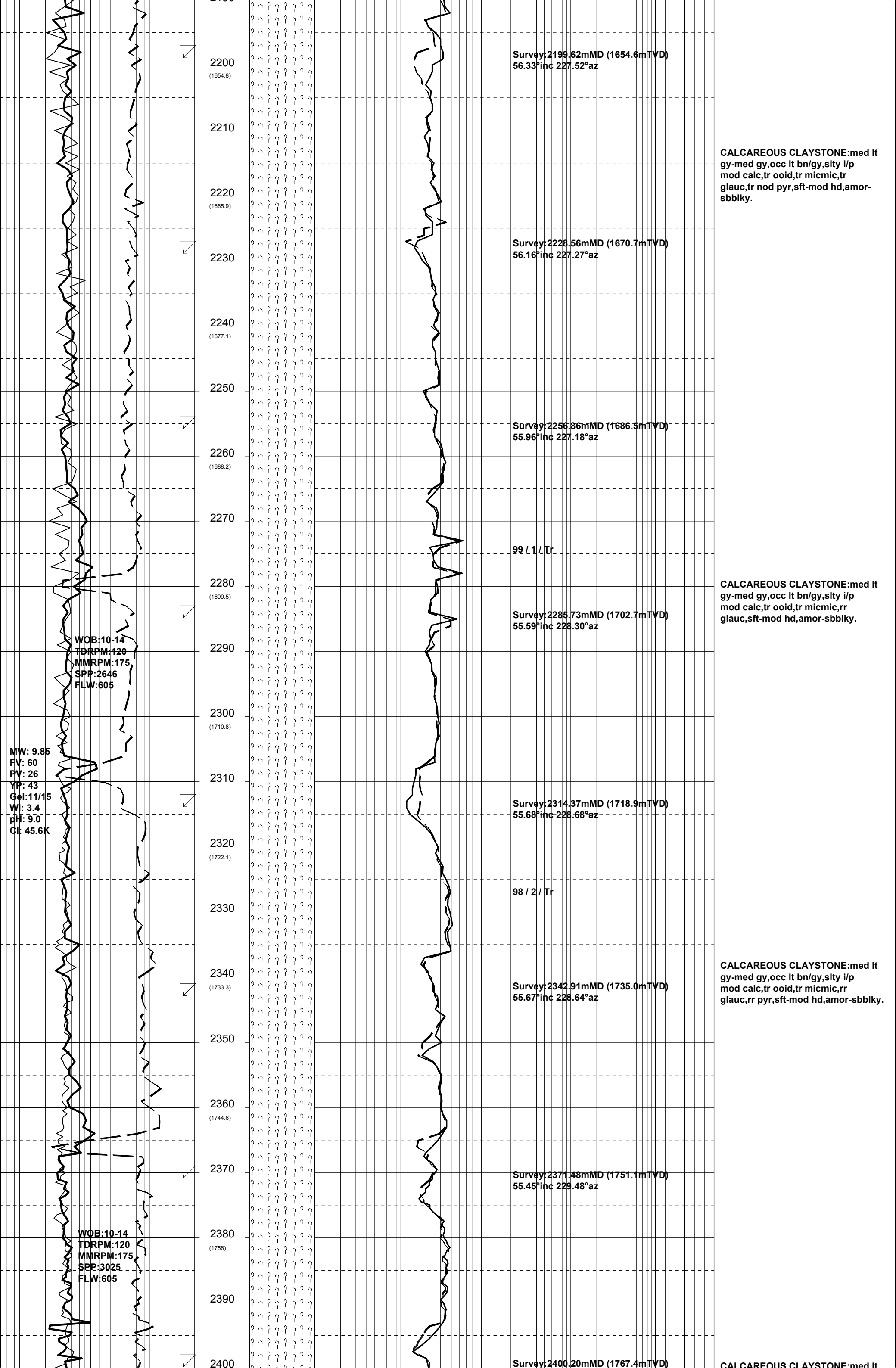
Survey:2113.96mMD (1607.3mTVD)  
55.53°inc 228.22°az

99 / 1 / Tr

Survey:2142.51mMD (1623.1mTVD)  
56.95°inc 227.9°az

CALCAREOUS CLAYSTONE: med lt  
gy-med gy, occ slty i/p, 20% calc, tr  
ooid, tr foss frag, tr micmic,  
rr glauc, sft-mod hd, amor-sbblky.

Survey:2171.01mMD (1638.8mTVD)  
56.53°inc 227.84°az



MW: 9.85  
FV: 60  
PV: 26  
YP: 43  
Gel: 11/15  
WI: 3.4  
pH: 9.0  
Cl: 45.6K

WOB: 10-14  
TDRPM: 120  
MMRPM: 175  
SPP: 2646  
FLW: 605

WOB: 10-14  
TDRPM: 120  
MMRPM: 175  
SPP: 3025  
FLW: 605



