



# MASTERLOG

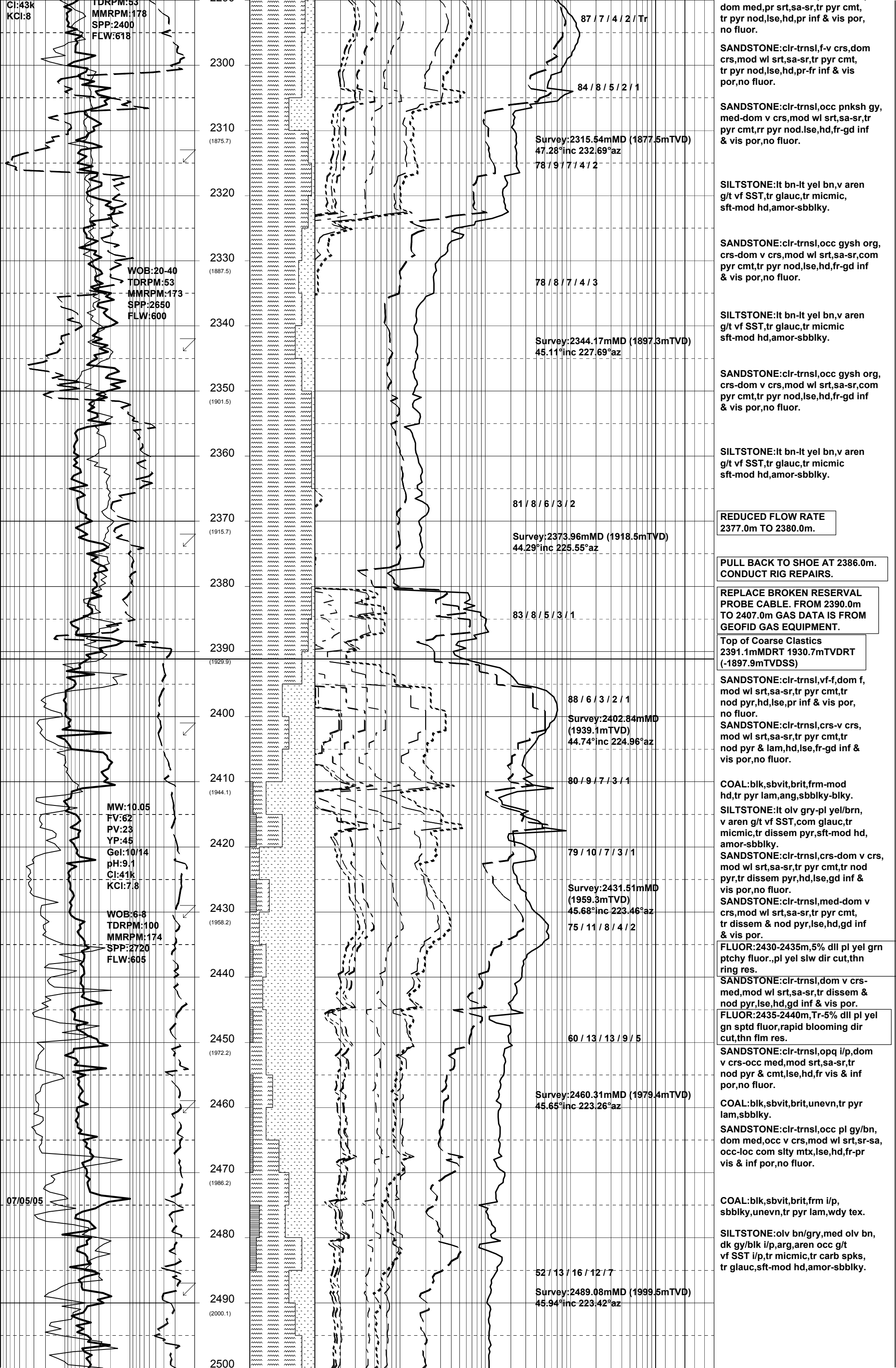
## BMA A10A

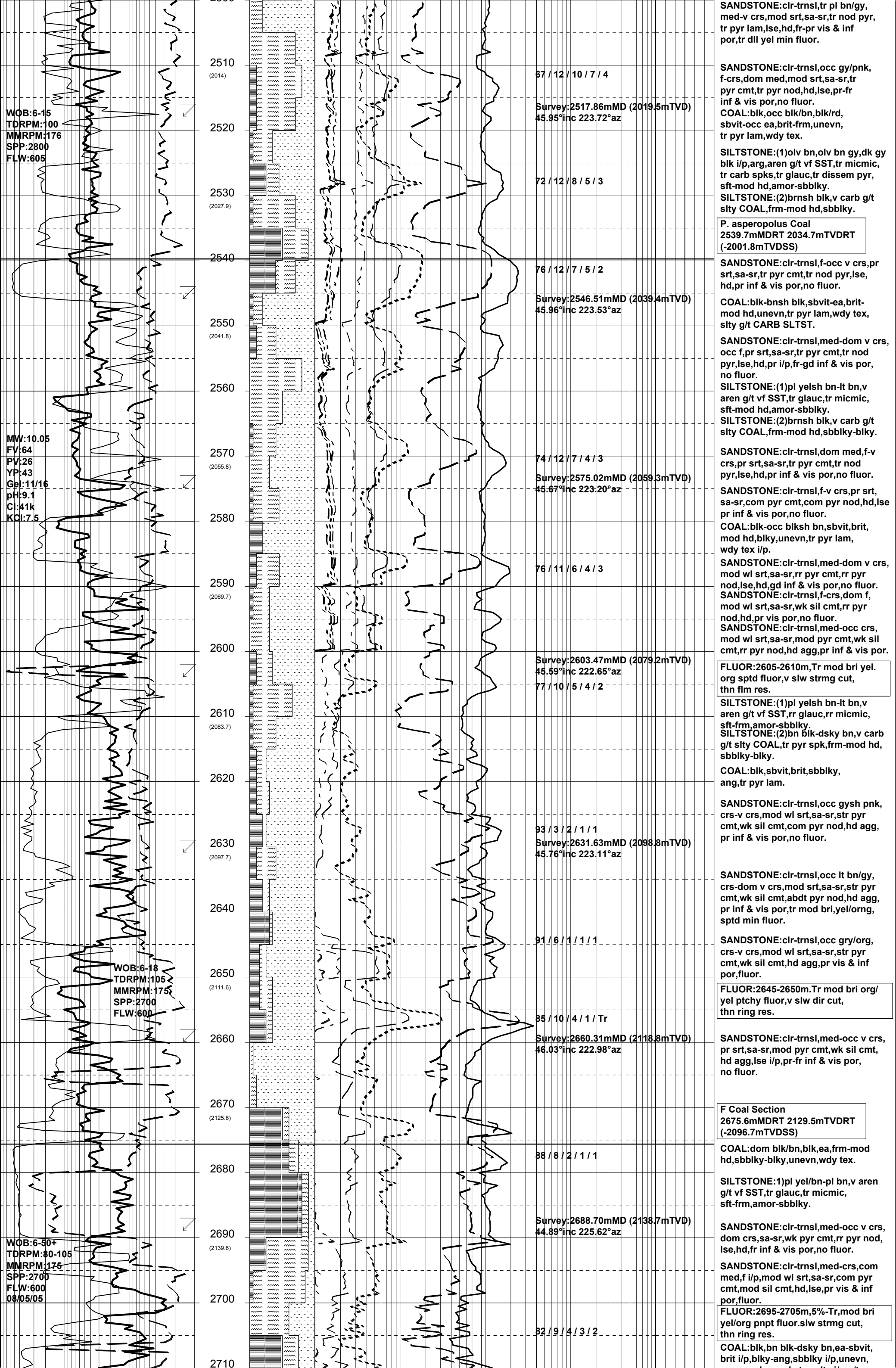


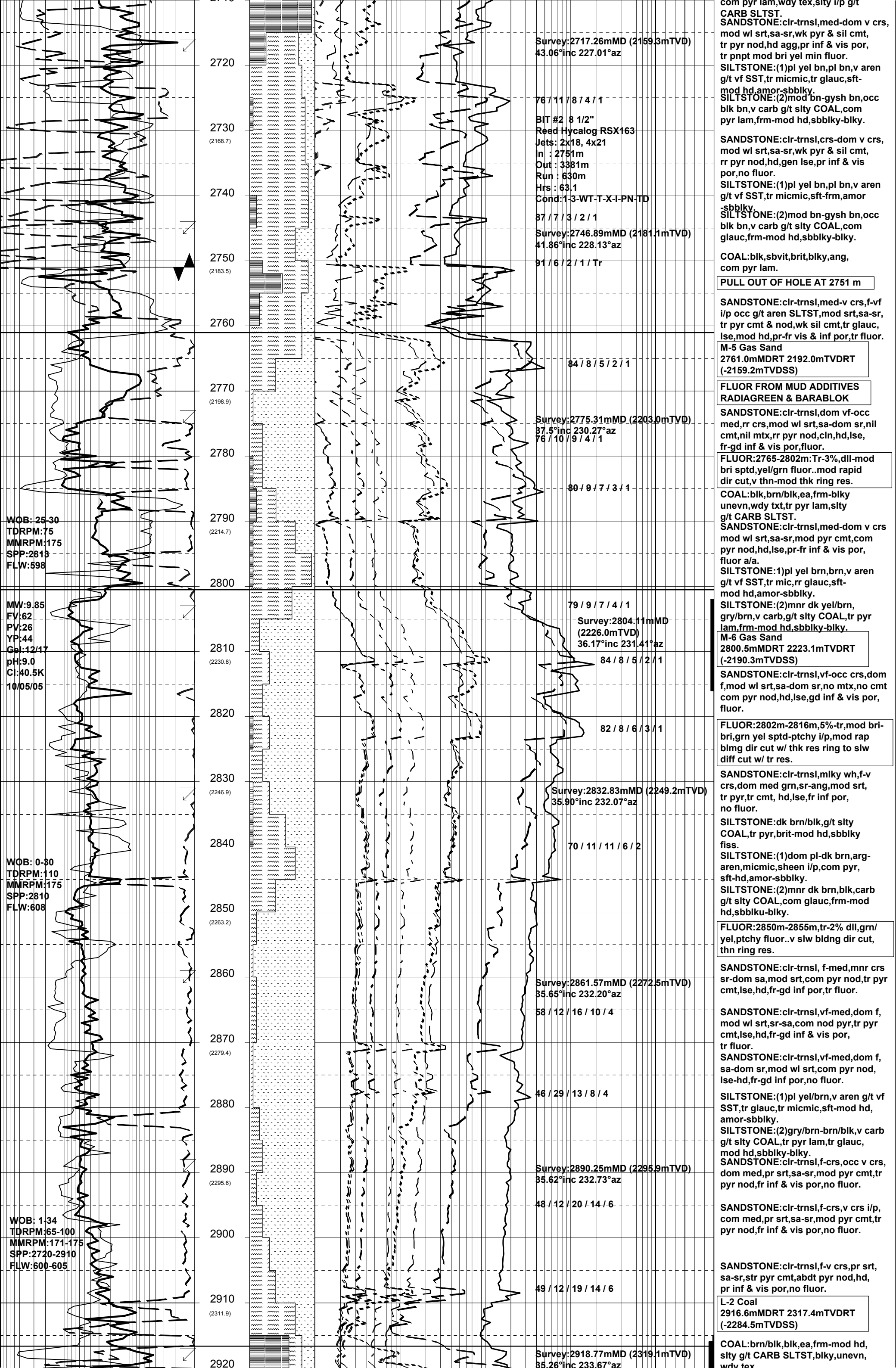
GENERAL	POSITION	HOLE / CASING INFO	DATE / DEPTH	ENGINEERS
Country : AUSTRALIA Permit : VIC L11 Field : Bream Basin : GIPPSLAND Well Type : DEVELOPMENT Rig Name : NABORS 453	Local Co-ord X : 147 46 19.976 E Local Co-ord Y : 38 29 58.824 S MGA Co-ord X : 567336.31 mE MGA Co-ord Y : 5738460.34 mN RT to MSL : 32.82 m RT to Sea Bed : 92.25 m	8-1/2" Hole to 3392 m 13-3/8" Surface Csg at 921 m 9-5/8" Intermediate Csg at 9-5/8" Whipstock set at 2265 m 7" Production Csg at 3391.7 m	Kick Off Date : 05/05/2005 Total Depth Date : 17/05/2005 Total Depth : 3392 m True Vertical Depth : 2727.9 m Log Scale : 1/ 500	Mark Smith V.B. Jagarlamudi Paul McGilveray Steve Oades

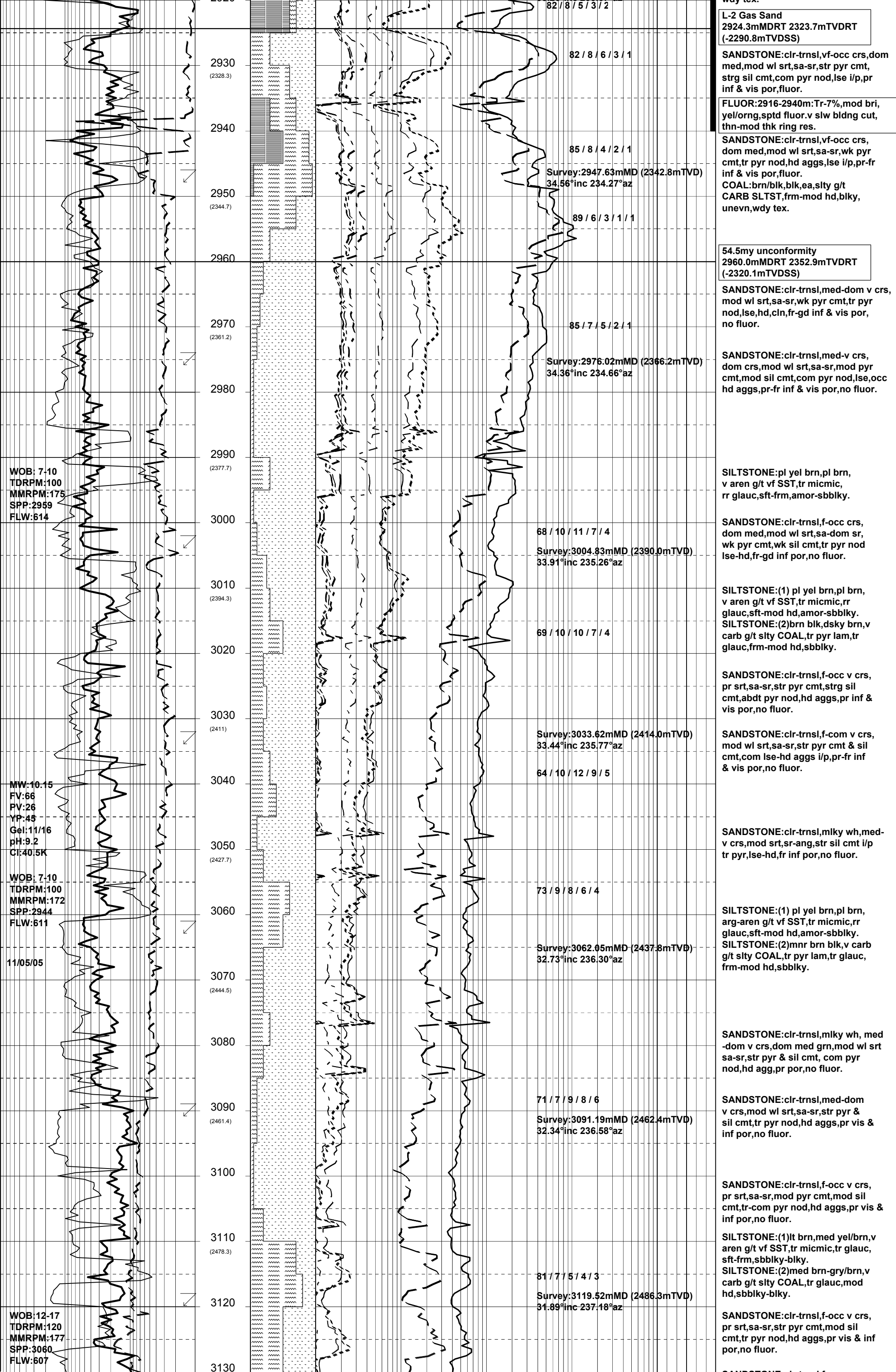
ABBREVIATIONS		LITHOLOGY LEGEND				ENGINEERING LEGEND	
MW Mud Weight FV Funnel Viscosity PV Plastic Viscosity YP Yield Point Gel Gel Strength WL Water Loss KCl Potassium Chloride Cl Chlorides Incl Inclination Az Azimuth	WOB Weight on Bit (klbs) RPM Rotations Per Min FLW Flow Rate (gpm) SPP Pump Pressure (psi) RR Re-Run Bit TG Trip Gas CG Connection Gas BG Background Gas DGP Drilled Gas Peak MM Mud Motor	CLAYSTONE SILTSTONE SST: F - V FINE SST: MEDIUM SST: COARSE SHALE	MARL LIMESTONE DOLOMITE CHERT CONGLOMERATE COAL	BRYOZOA RADIOLARITES ECHINOIDS CORALS FORAMINIFERA LITHIC FRAGMENT	CARB FRAGMENT QUARTZITE INTRUSIVES GLAUCONITE PYRITE CEMENT	CASING SHOE LINER HANGER BIT CHANGE DEVIA. SURVEY SWC UNRECOV SIDEWALL CORE CORE	WIRELINE LOGS MDT POINTS: PRESSURE ONLY SAMPLE SEAL FAILURE TIGHT

ROP (m/hr)		DEPTH (m) (TVD)	CUTTINGS LITHOLOGY	RESERVAL GAS DATA						CUT FLUOR	DIRECT FLUOR	LITHOLOGICAL DESCRIPTIONS and REMARKS		
WOB (tons)				C1	C2	C3	Total Gas in Units Chromatograph in PPM							
MWD Gamma Ray (api)				%	iC4	nC4	iC5	TG						
					nC5									
500	50	5	.5	0	100	.5	5	50	500	5K	1000K	good		
50	25	0				100	1K	10K	100K	1000K		poor		

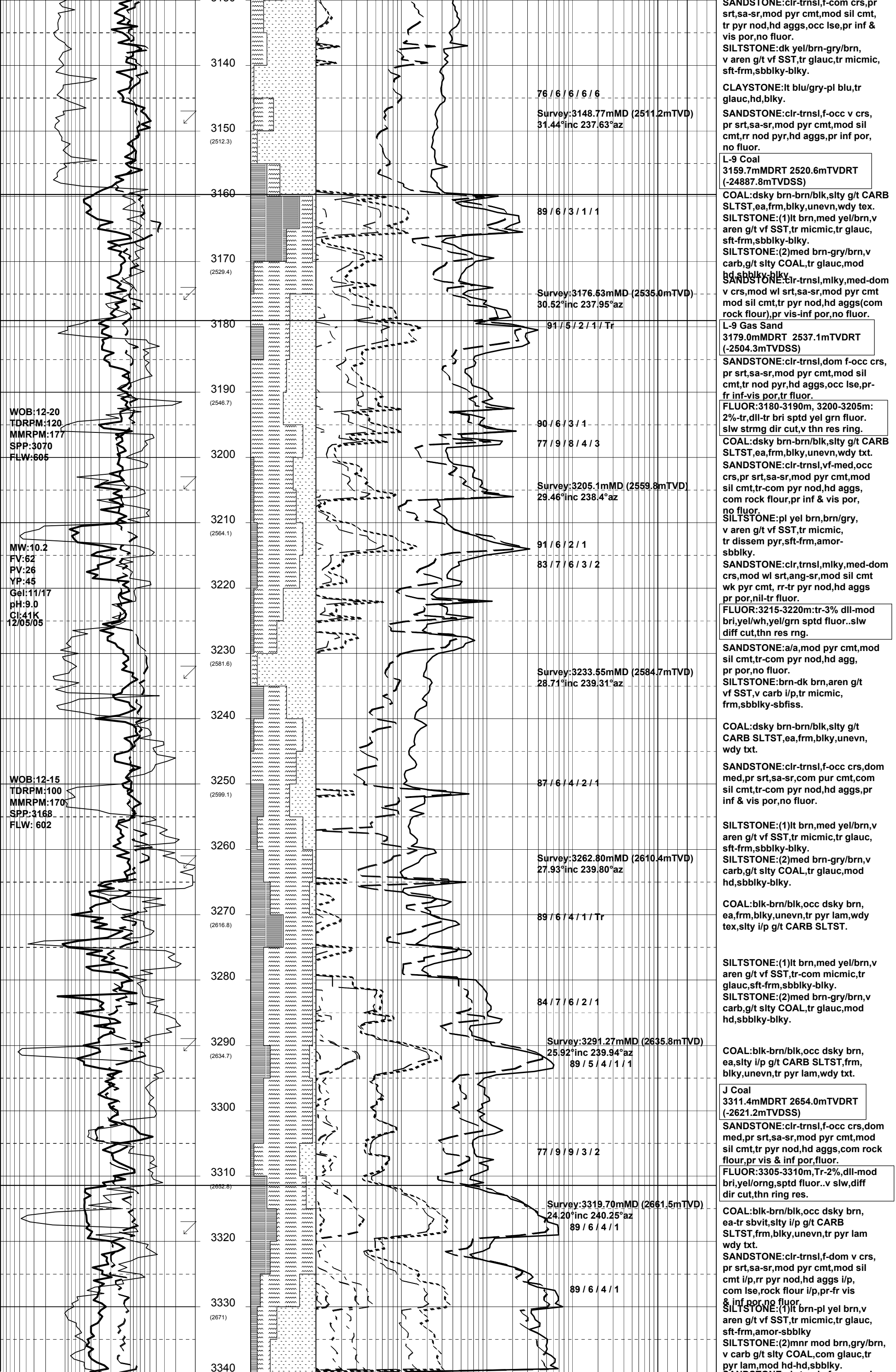












<p>WOB:12-20 TDRPM:110 MMRPM:170 SPP:3115 FLW: 584</p> <p>MW:10.1 FV:79 PV:29 YP:48 Gel:11/18 pH:9.2 Cl:40K</p> <p>13/05/05</p> <p>MW:10.15 FV:67 PV:29 YP:45 Gel:11/16</p> <p>17/05/05</p> <p>MW:10.15 FV:82 PV:30 YP:47 Gel:11/17</p> <p>WOB:30-50 TDRPM:85 SPP:2220 FLW:590</p>		<p>Using one pump Low mud level in trough 91 / 5 / 3 / 1</p> <p>Survey:3348.53mMD (2687.9mTVD) 23.60°inc 240.25°az</p> <p>86 / 7 / 4 / 2 / 1</p> <p>84 / 7 / 5 / 2 / 1</p> <p>86 / 7 / 4 / 2 / 1</p> <p>83 / 8 / 6 / 3 / 1</p> <p>Survey:3360.89mMD (2699.2mTVD) 23.30°inc 239.72°az</p> <p>84 / 8 / 5 / 2 / 1</p> <p>86 / 7 / 4 / 2 / 1</p> <p>BIT #3RR 8 1/2" SMITH GF111YODVPD Jets: 3xOPEN In : 3381m Out : 3392m Run : 11 m Hrs : 4.4 Cond:3-2-WT-A-E-2/16-NO-TD</p> <p>82 / 7 / 7 / 3 / 2</p> <p>83 / 7 / 6 / 3 / 1</p>	<p>SANDSTONE:clr-trnsl,vf-occ med, dom f,mod wl srt,sa-sr,i/p mod pyr cmt,mod sil cmt,tr pyr nod,hd aggs i/p,com rock flour,dom lse,pr-fr vis &amp; inf por,no fluor.</p> <p>SANDSTONE:clr-trnsl,med-v crs,pr srt,sa-sr,mod pyr cmt,mod sil cmt, tr pyr nod,com rock flour,hd aggs, occ med-crs lse grns,pr inf por,fluor.</p> <p>FLUOR:3345-3355m,2%-Tr,mod bri yel grn sptd fluor.v slw diff-bldg dir cut,thn ring res.</p> <p>COAL:blk-brn/blk,ea-sbvit.brit blky,unevn,tr pyr lams.</p> <p>SANDSTONE:clr-trnsl,vf-med,rr crs dom f,mod wl srt,ang-sr,str pyr cmt &amp; sil cmt,abdt pyr nod,hd aggs, occ lse grn,pr-fr inf-vis por,fluor.</p> <p>FLUOR:3365-3370m,Tr mod bri sptd grn yel fluor,v slw diff dir cut, tr ring res.</p> <p>SILTSTONE:(1)pl yel brn,lt brn,v aren g/t vf SST,tr micmic,tr glauc, sft frm,amor-sbbiky.</p> <p>SILTSTONE:(2)mnr mod brn,gry/brn, v carb g/t slty COAL,tr glauc,tr pyr lam,mod hd-hd,sbbiky.</p> <p>COAL:blk-brn/blk,sbvit,brit blky,unevn,tr glauc,tr pyr lams.</p> <p>Run Reeves compact shuttle logging from 3376.5 to 2193.1 mMDRT MCG-MDN-MPD-MDL-MSS-MAI</p> <p>SILTSTONE:(1)pl brn,dk yel brn,gry brn,v aren g/t vf SST,abdt glauc (10%)mod hd-hd,sbbiky-blky.</p> <p>SILTSTONE:(2)mnr brn/blk, blk red carb,g/t slty COAL,com glauc,tr pyr lam,mod hd-hd,sbbiky-blky.</p> <p>SANDSTONE:clr-trnsl,vf-occ v crs prly srtd,ang-sr,wk pyr &amp; wk sil cmt,abdt pel glauc,com pyr nod,tr hd agg-dom lse,pr-fr inf-vis por.</p> <p>FLUOR:3381-3392.0m,2%-Tr dll ptchy- ppnt grn yel fluor,no dir cut,v slw diff crsh cut,thin ring res.</p> <p>Bream A10A Total Depth of 3392.0 mMDRT 2727.9mTVDRT (-2695.1mTVDSS) at 19:00 hrs on 17/05/2005.</p> <p>7" Liner run to 3391.7 m</p>
--	--	---	--