

<p style="text-align: center;">DISCLAIMER</p> <p>THE USE OF AND RELIANCE UPON THIS RECORDED-DATA BY THE HEREIN NAMED COMPANY (AND ANY OF ITS AFFILIATES, PARTNERS, REPRESENTATIVES, AGENTS, CONSULTANTS AND EMPLOYEES) IS SUBJECT TO THE TERMS AND CONDITIONS AGREED UPON BETWEEN SCHLUMBERGER AND THE COMPANY, INCLUDING: (a) RESTRICTIONS ON USE OF THE RECORDED-DATA; (b) DISCLAIMERS AND WAIVERS OF WARRANTIES AND REPRESENTATIONS REGARDING COMPANY'S USE OF AND RELIANCE UPON THE RECORDED-DATA; AND (c) CUSTOMER'S FULL AND SOLE RESPONSIBILITY FOR ANY INFERENCE DRAWN OR DECISION MADE IN CONNECTION WITH THE USE OF THIS RECORDED-DATA.</p>		
<p>OTHER SERVICES FOR RUN3</p> <p>Directional Drilling</p> <p>Directional Surveys</p>	<p>OTHER SERVICES FOR RUN</p>	<p>OTHER SERVICES FOR RUN</p>
<p>REMARKS: RUN NUMBER 3</p> <p>8-1/2 in. hole was drilled from 2248.0 m to 3302.0 m MD</p> <p>Depth is referenced to Driller's Depth.</p> <p>Gamma Ray corrected for Tool size, Bit Size and Mud Weight.</p> <p>Mud Type IS KCl/PHPA/Glycol.</p> <p>POOH due to TD of BMA A23A.</p>	<p>REMARKS: RUN NUMBER</p>	<p>REMARKS: RUN NUMBER</p>

Thank You for Choosing Schlumberger

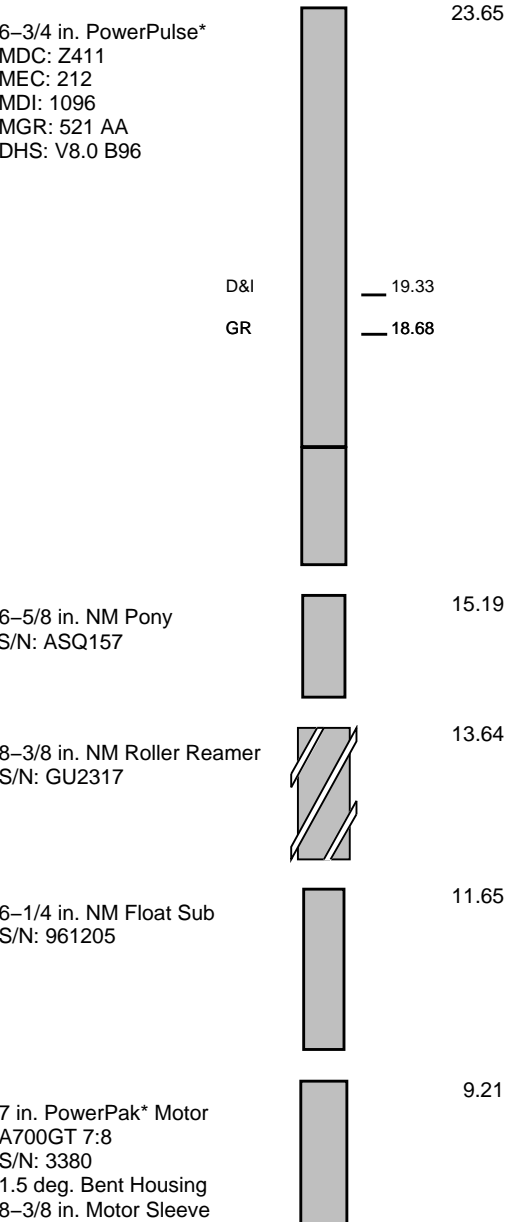
EQUIPMENT DESCRIPTION

RUN3

RUN

RUN

DOWNHOLE EQUIPMENT





0.00

0.22

Smith PDC Bit
OD: 8–1/2 in.
S73VPX S/N: JT6967

Maximum string diameter 8.50 in.
All lengths in Meters

Bit Run Summary

Run number		1									
Bit size	in.	8.5									
Bit start depth	m	2248.0									
Bit end depth	m	3302.0									
Top interval logged	m	2241.0									
Bottom interval logged	m	3282.6									
Begin log: time		10:10									
Begin log: date		09–Jul–05									
End log: time		18:23									
End log: date		11–Jul–05									
Mud data											
Depth	m	3302.0									
Type		KCl/PHPA/Gly.									
Mud weight	ppg	9.95									
Solids	%	7.4									
Chlorides	mg/L	46,500									
Rm		N/A									
Rmf		N/A									
Rmc		N/A									
Potassium	%	4.2									
Environmental data											
GR											
Mud weight	ppg	9.95									
Bit size	in.	8.5									
Resistivity											
Neutron porosity											
Hole Size		N/A									
Mud weight		N/A									
Temperature		N/A									
Mud salinity		N/A									
Formation salinity		N/A									
Recording rate 1	SEC	9.47									
Recording rate 2	SEC	N/A									
Filtering GR		3 pt.									
Filtering density		N/A									
Filtering Neutron		N/A									
Company representative		G. Campbell	B. Steel	W. Westman							
Schlumberger D&M Personnel		R. Borjas	L. Johnston	C. Cocks	L. Muskett						

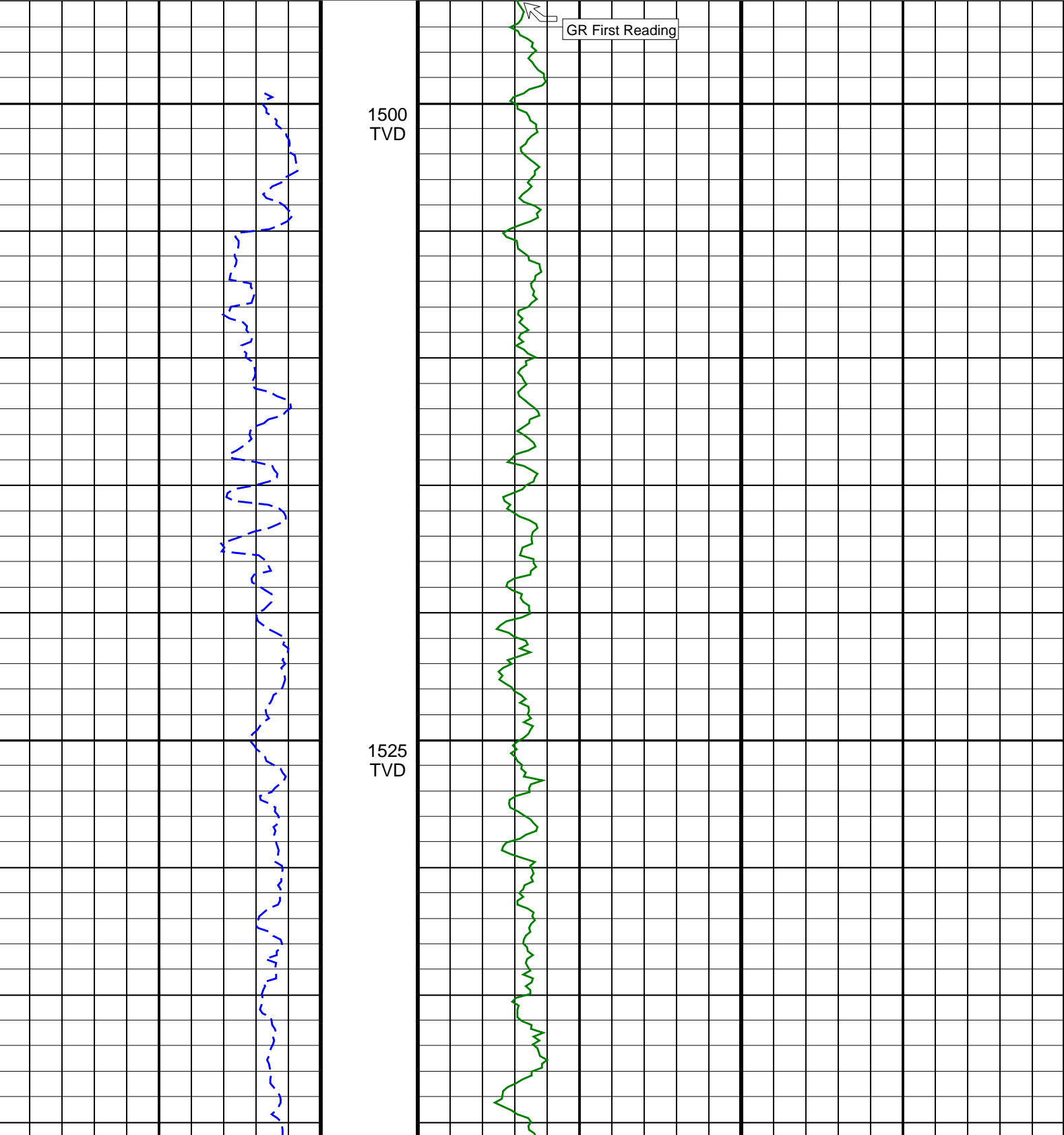
BMA A23A RT 1:200 TVD

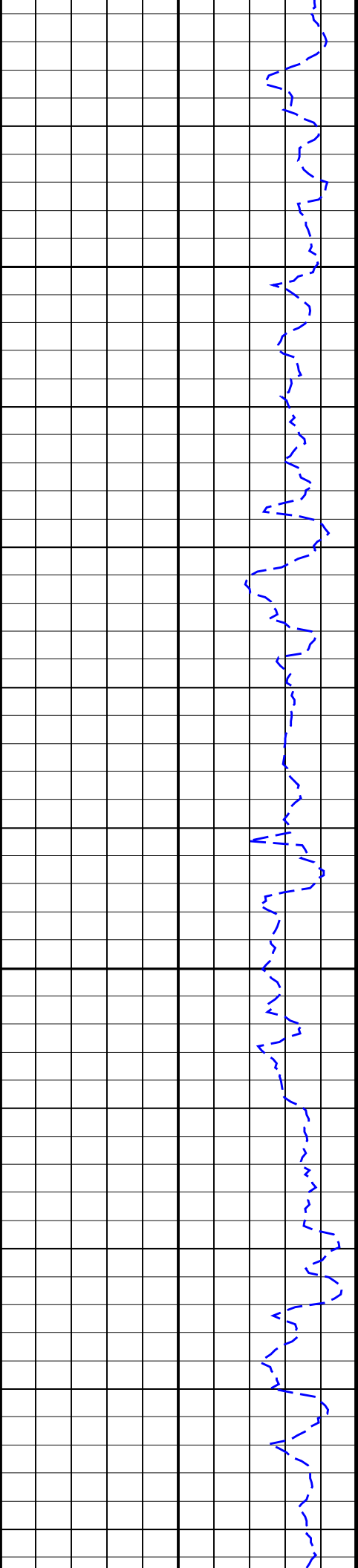
IDEAL Version: ID10_2B_08 <TVD> Vertical Scale: 1:200

Graphics File Created: 12-Jul-2005 21:31

ROP*5 (ROP5)
(M/HR)0

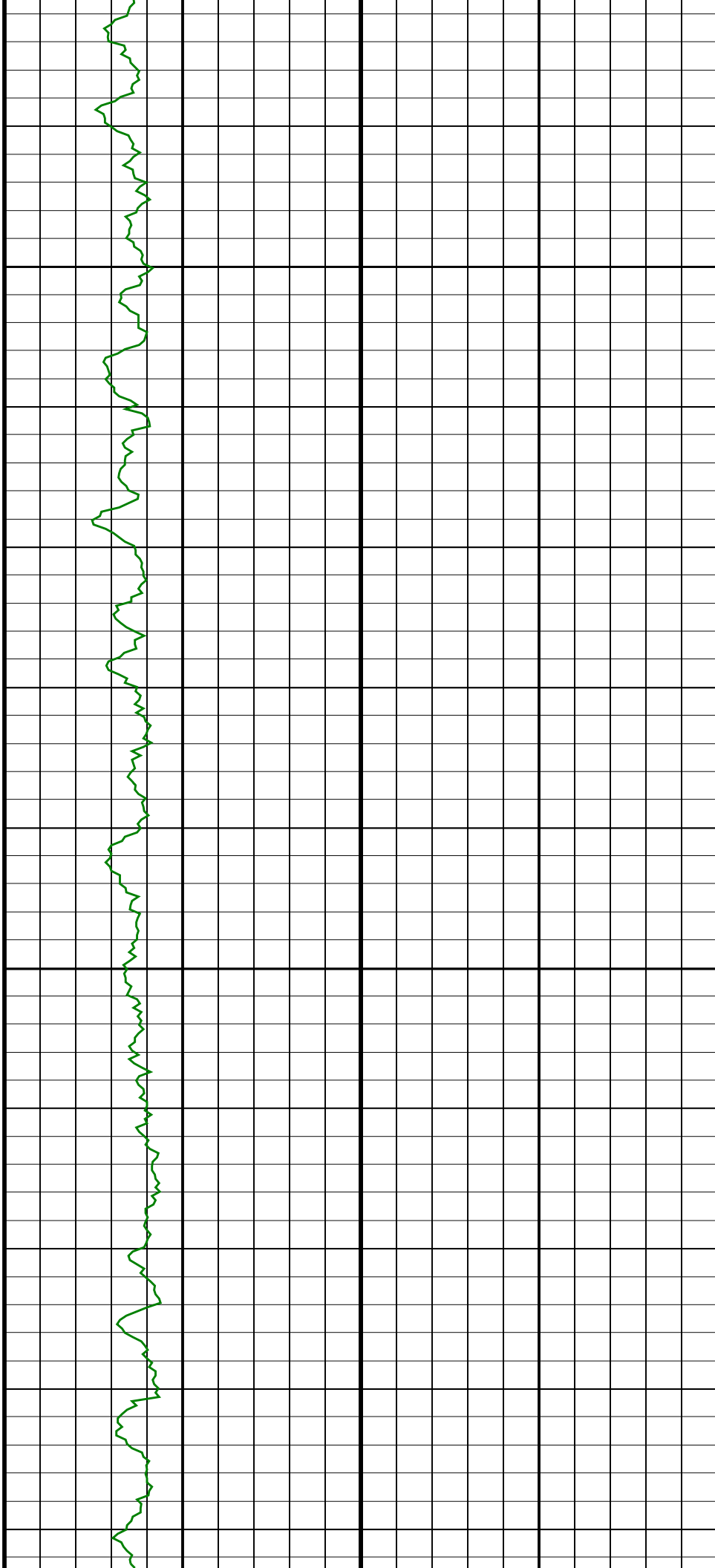
GR(TM) (GRM1)
(GAPI)0400

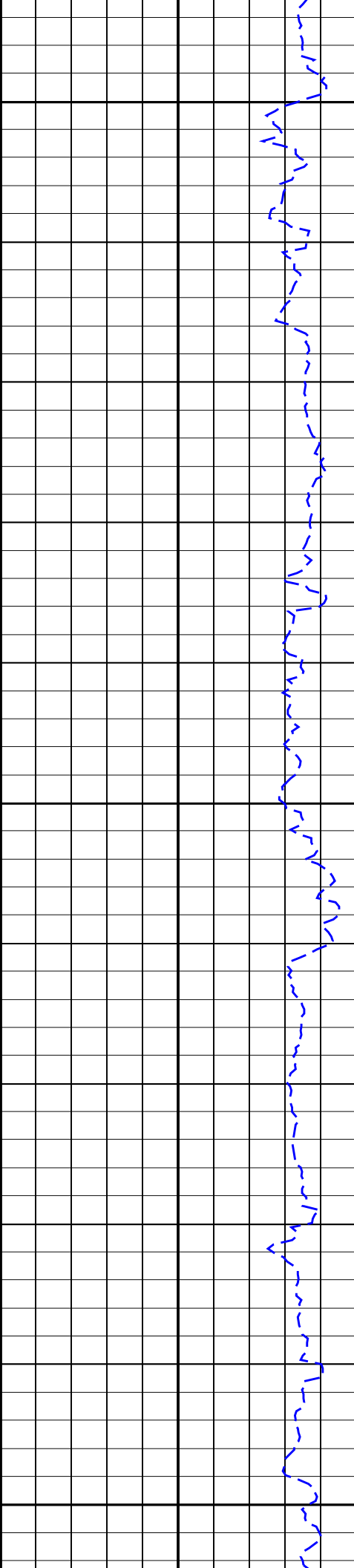




1550
TVD

1575
TVD

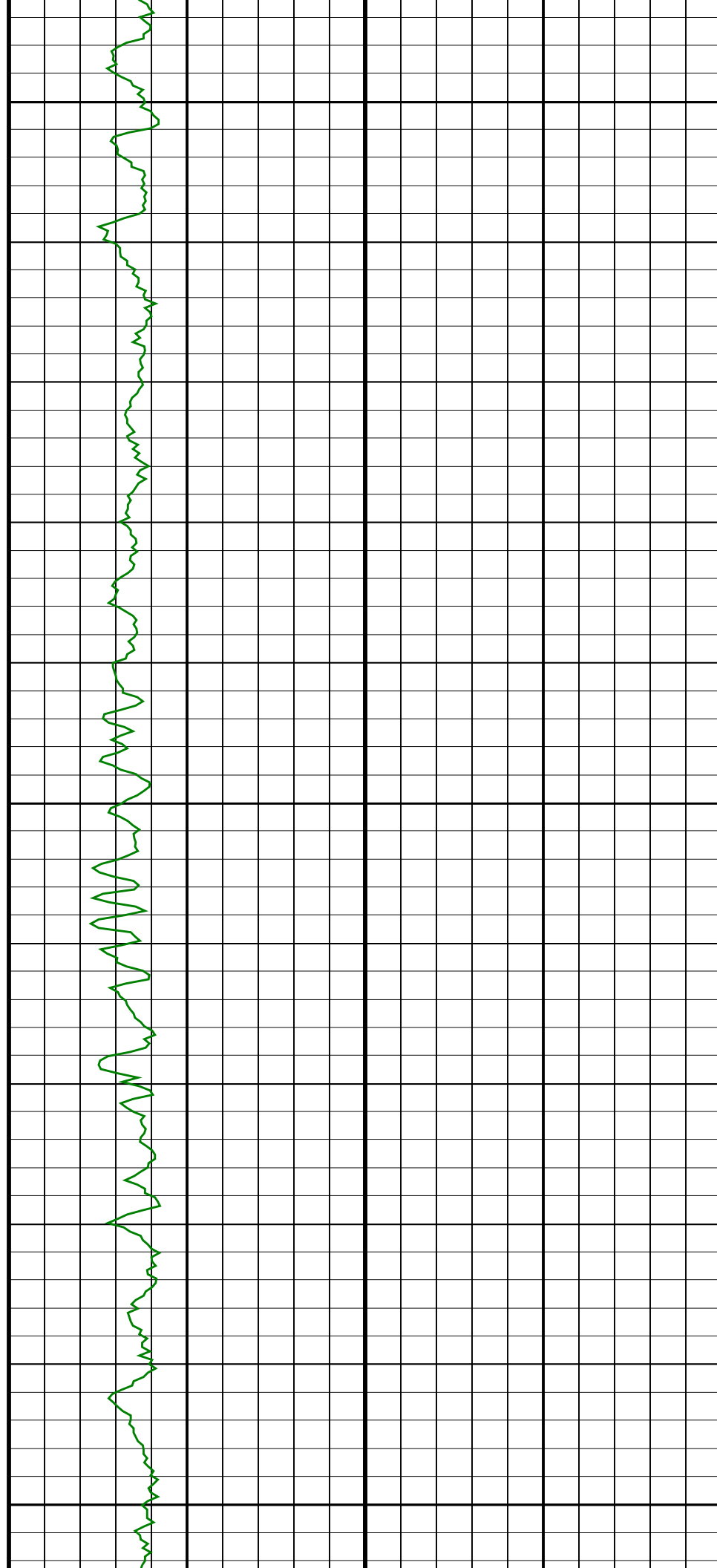


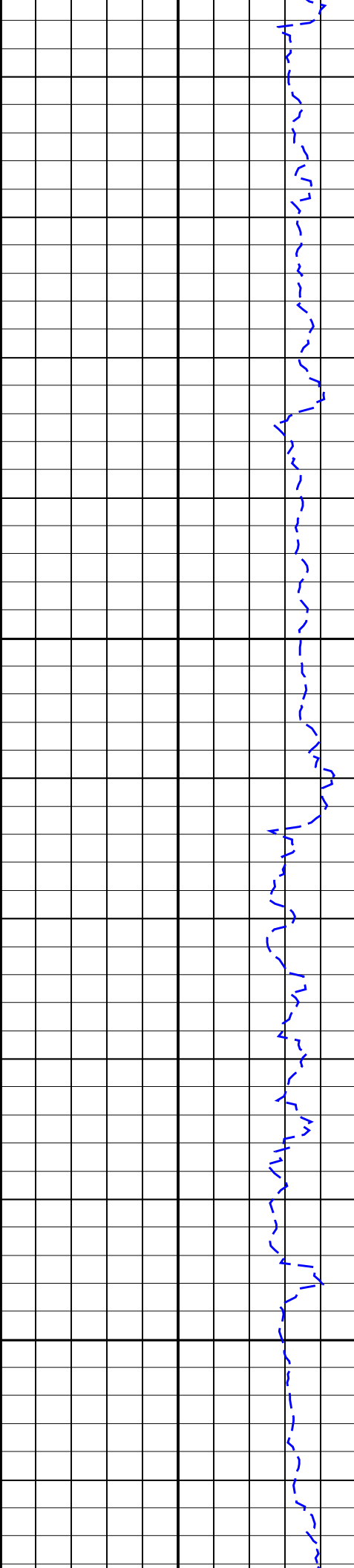


1600
TVD

1625
TVD

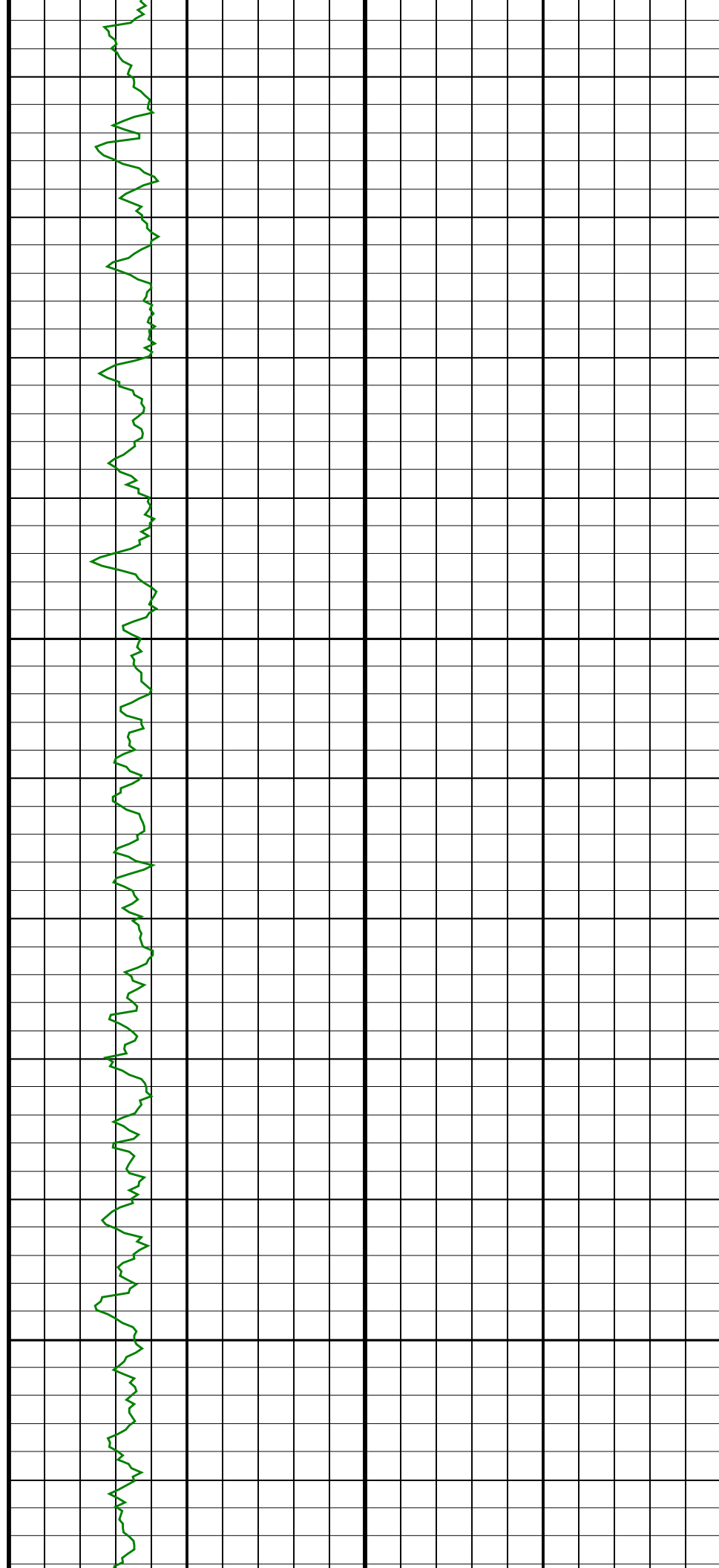
1650
TVD

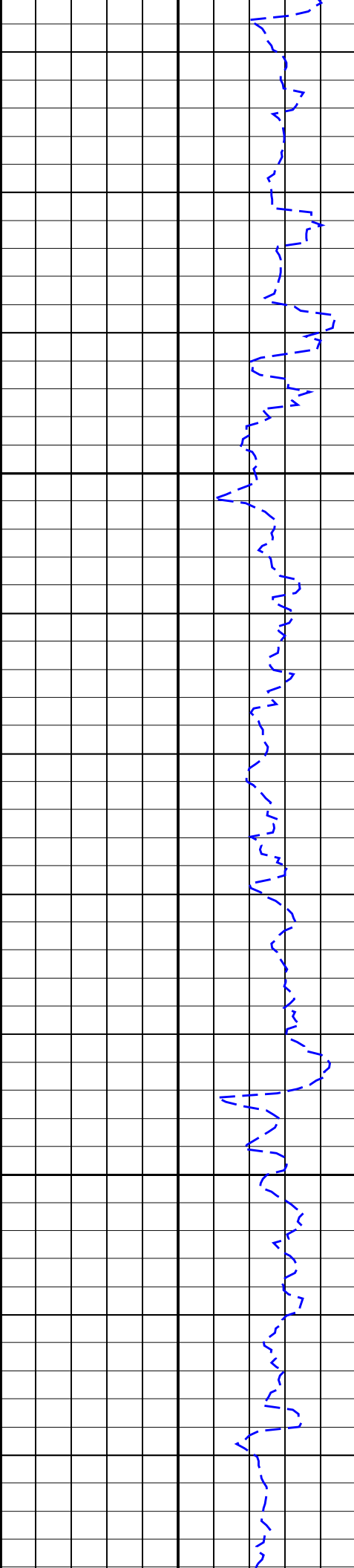




1675
TVD

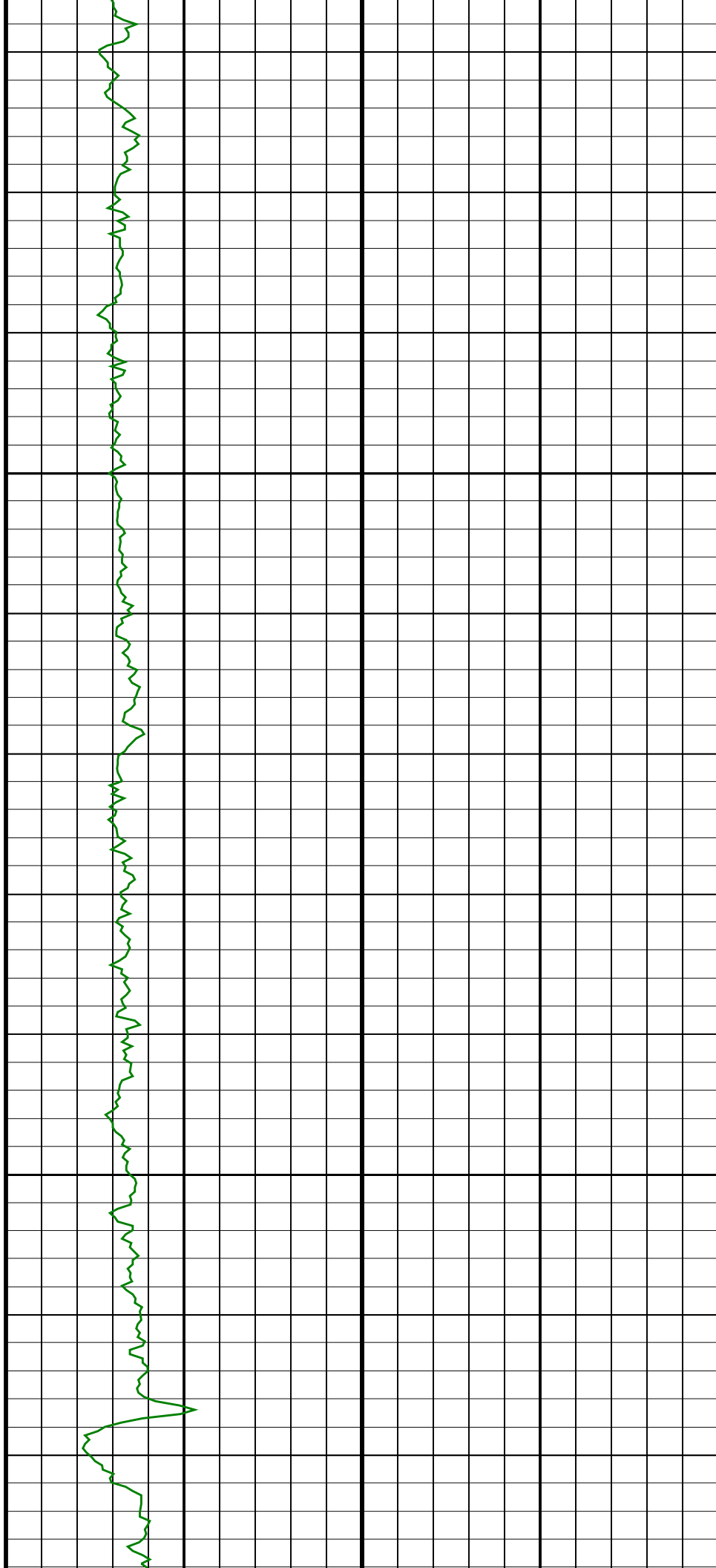
1700
TVD

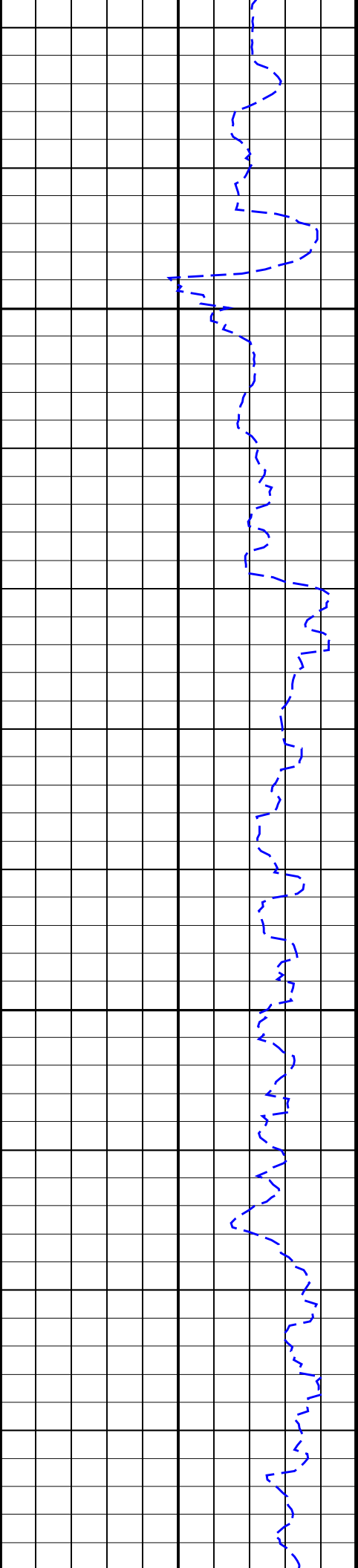




1725
TVD

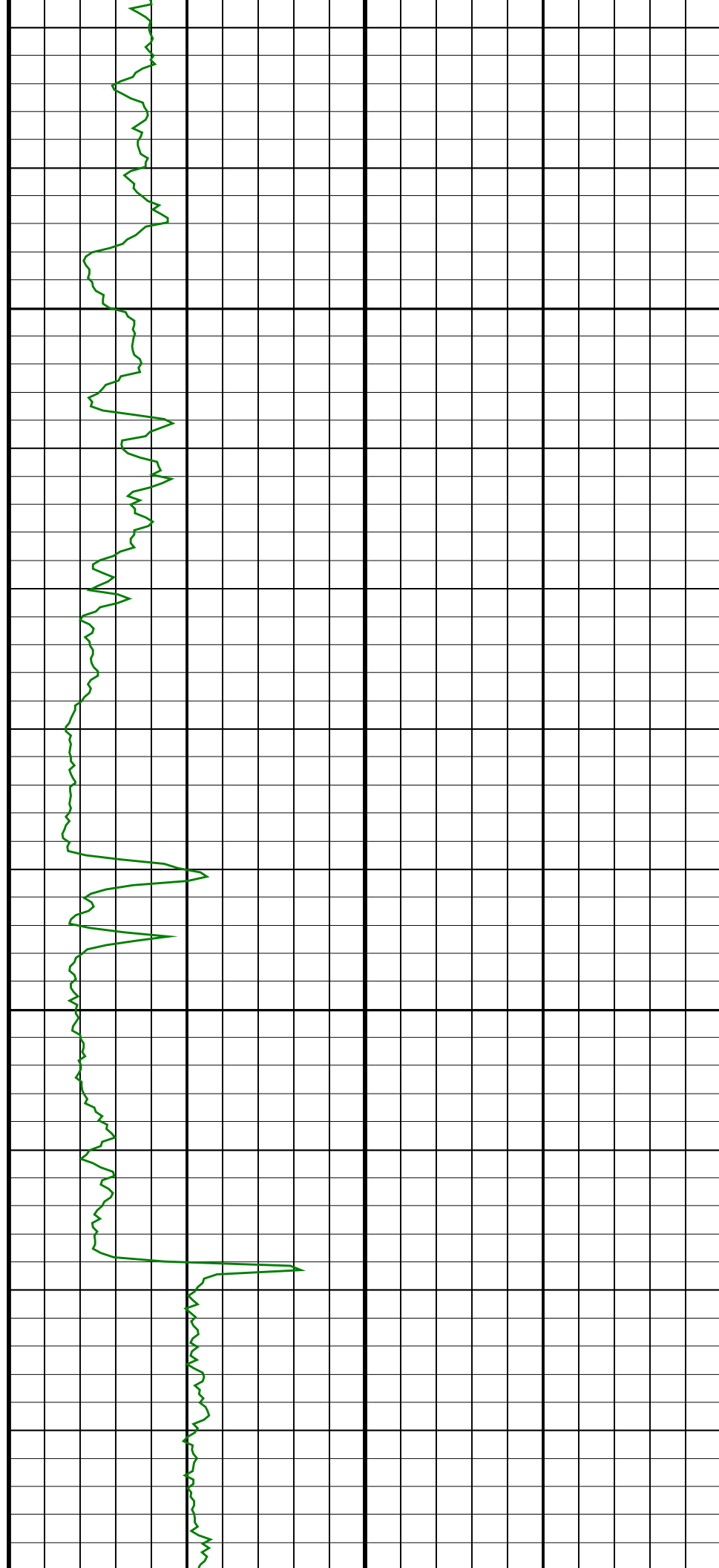
1750
TVD

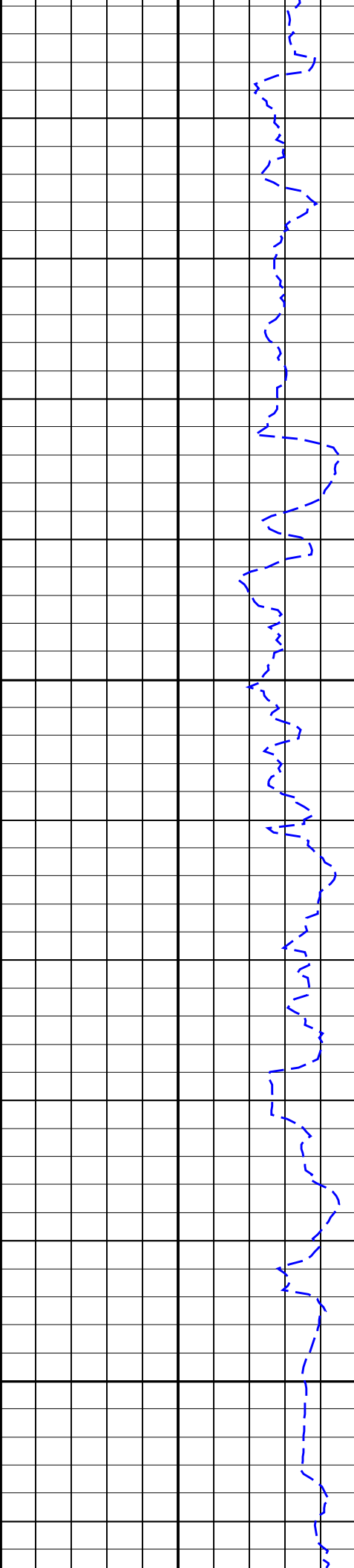




1775
TVD

1800
TVD

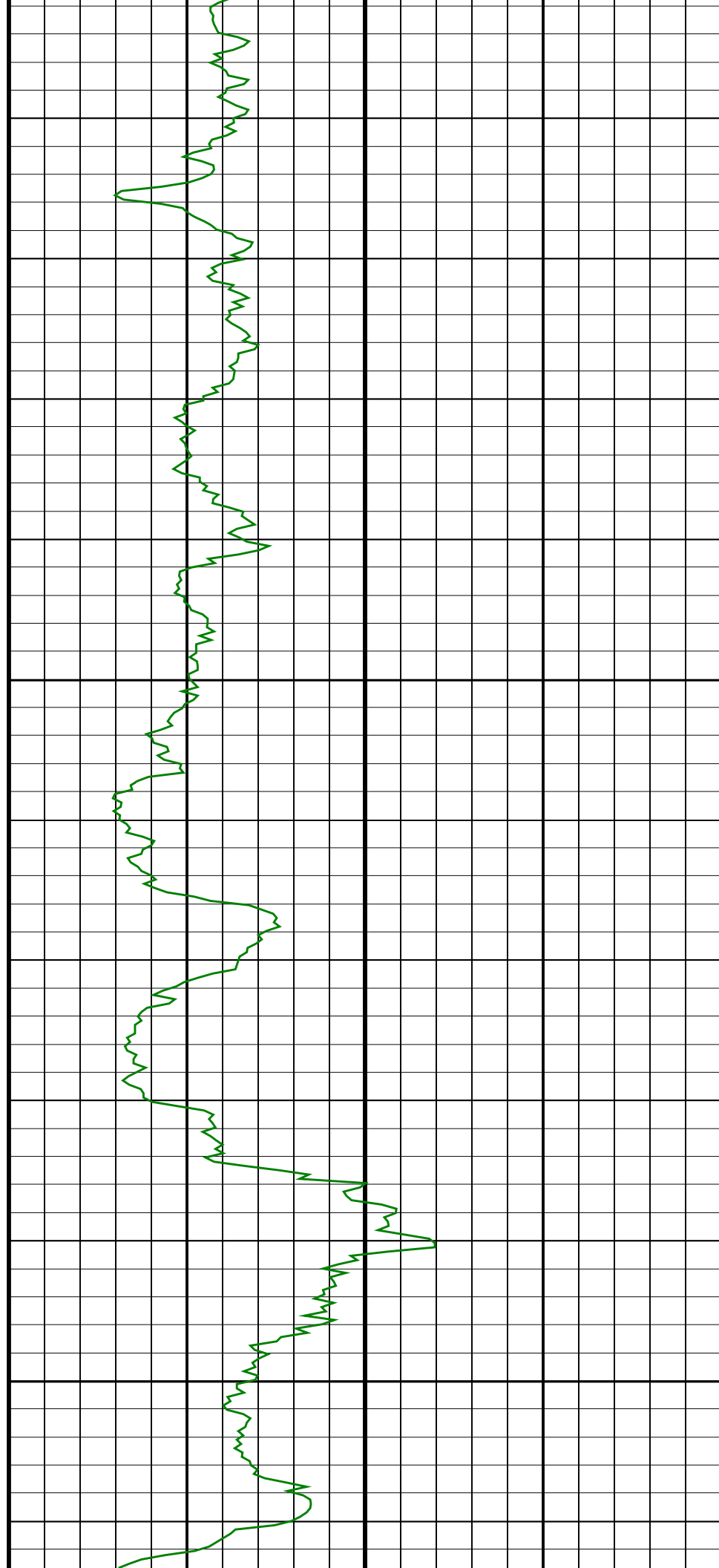


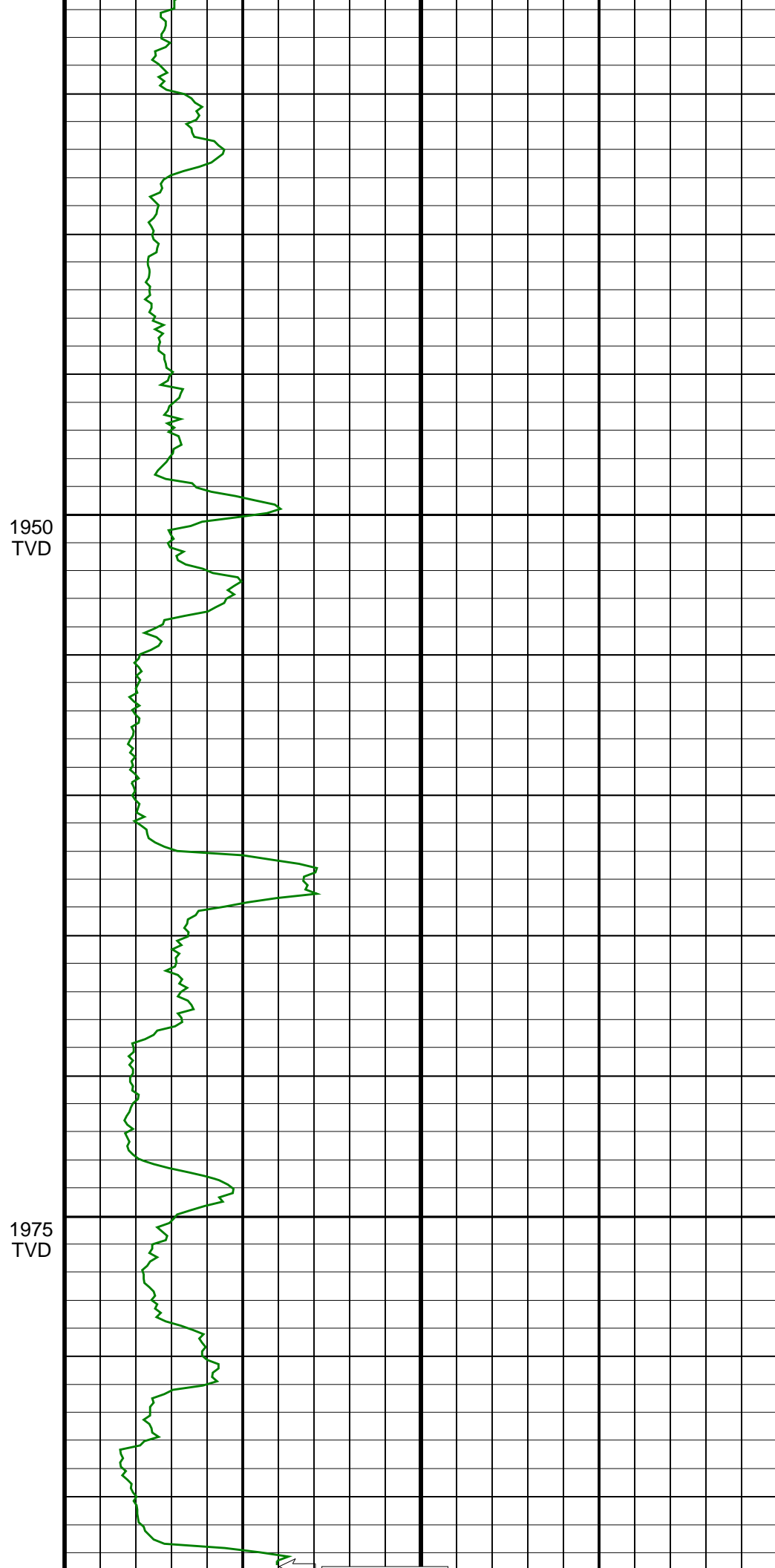
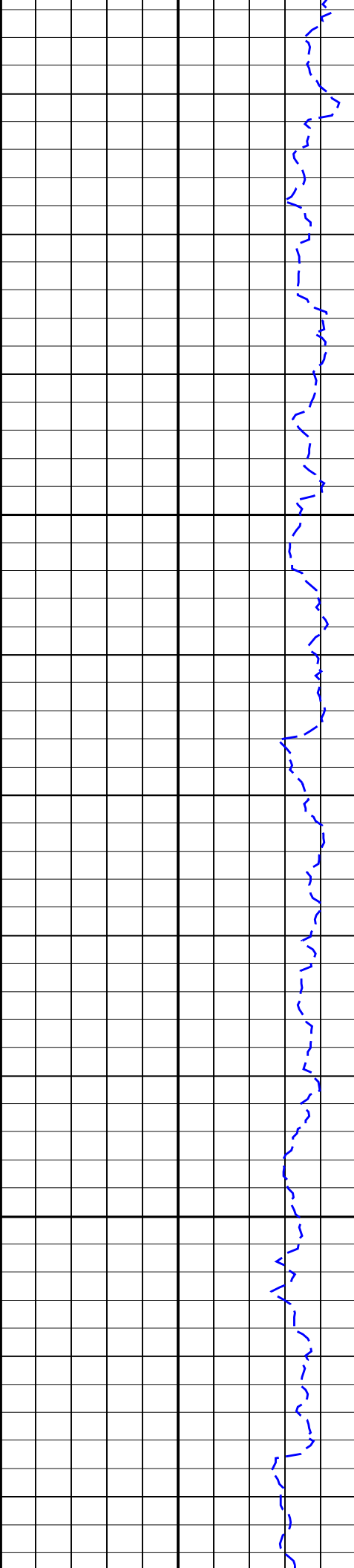


TVD

1900
TVD

1925
TVD





29	3080.57	62.48	179.07	28.40	1895.11	2177.65	-2033.78	801.93	2186.17	158.48	0.37	MWD	None
30	3109.62	63.19	179.18	29.05	1908.38	2202.11	-2059.62	802.32	2210.38	158.72	0.25	MWD	None
[(c)2005 IDEAL ID10_2B_08]													
SCHLUMBERGER Survey Report				14-Jul-2005 13:31:42				Page		3 of 3			
===	=====	=====	=====	=====	=====	=====	=====	=====	=====	=====	=====	=====	=====
Seq	Measured	Incl	Azimuth	Course	TVD	Vertical	Displ	Displ	Total	At	DLS	Srvy	Tool
#	depth	angle	angle	length	depth	section	+N/S-	+E/W-	displ	Azim	(deg/	tool	Corr
-	(m)	(deg)	(deg)	(m)	(m)	(m)	(m)	(m)	(m)	(deg)	10m)	type	(deg)
===	=====	=====	=====	=====	=====	=====	=====	=====	=====	=====	=====	=====	=====
31	3138.42	62.26	179.01	28.80	1921.57	2226.34	-2085.22	802.73	2234.39	158.95	0.33	MWD	None
32	3166.88	62.13	178.59	28.46	1934.85	2250.21	-2110.39	803.26	2258.09	159.16	0.14	MWD	None
33	3195.55	62.68	178.34	28.67	1948.13	2274.35	-2135.79	803.94	2282.08	159.37	0.21	MWD	None
34	3224.28	63.08	178.43	28.73	1961.23	2298.65	-2161.35	804.66	2306.27	159.58	0.14	MWD	None
35	3252.72	63.80	178.34	28.44	1973.94	2322.83	-2186.78	805.37	2330.37	159.78	0.25	MWD	None
36	3282.05	64.46	178.43	29.33	1986.74	2347.91	-2213.16	806.12	2355.39	159.99	0.23	MWD	None
37	3302.00	64.91	178.49	19.95	1995.27	2365.04	-2231.18	806.60	2372.51	160.12	0.23	MWD_M	None
[(c)2005 IDEAL ID10_2B_08]													

Company: ESSO Australia Pty. Ltd.



Well: BMA A23A
Field: Bream A
Rig: ISDL 453
State: Victoria

Gamma Ray Service
1:200 True Vertical Depth
Real Time Log