



DRILLING LOG



FROM : (mt) 1340

TO : (mt) 2820

SCALE : 1/ 1000

Well Name : Flounder A-02a

Company : ESSO AUSTRALIA

Country : Australia

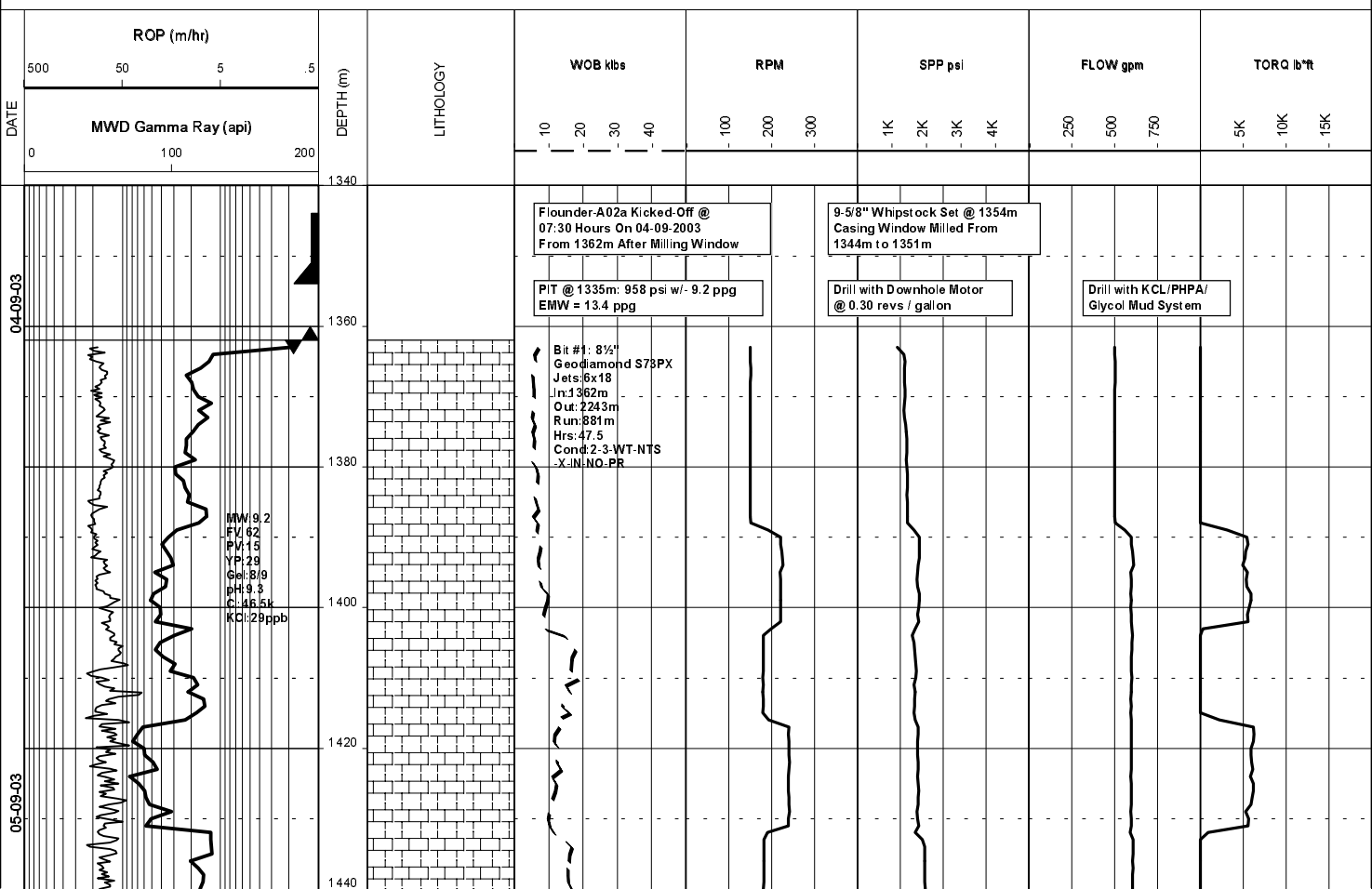
RT-MSL : 33.85 m

Final TD : 2803.0 m

RT-SEABED : 126.85 m

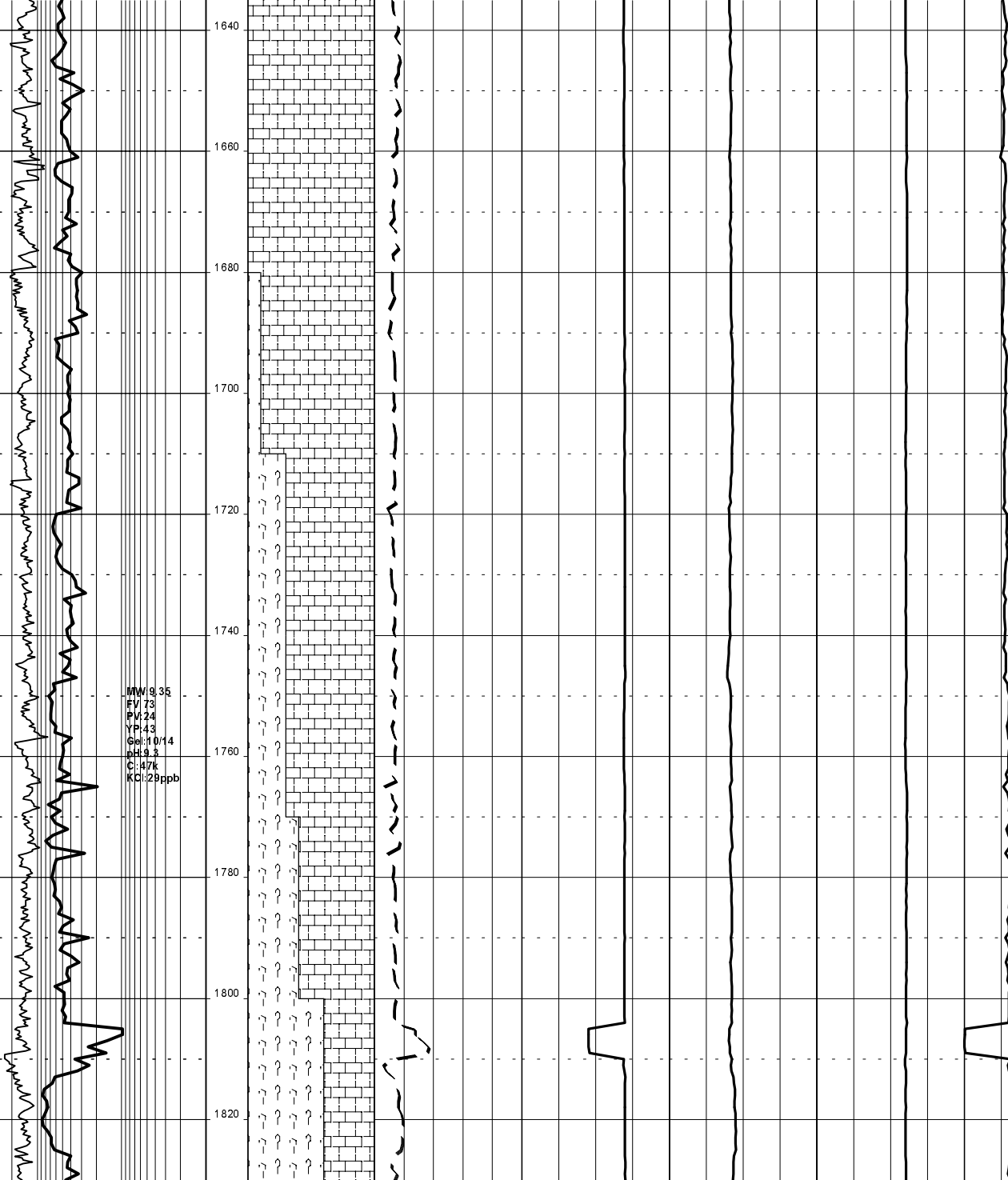
Final TVD : 2615.2 m

Generated by ALS Package

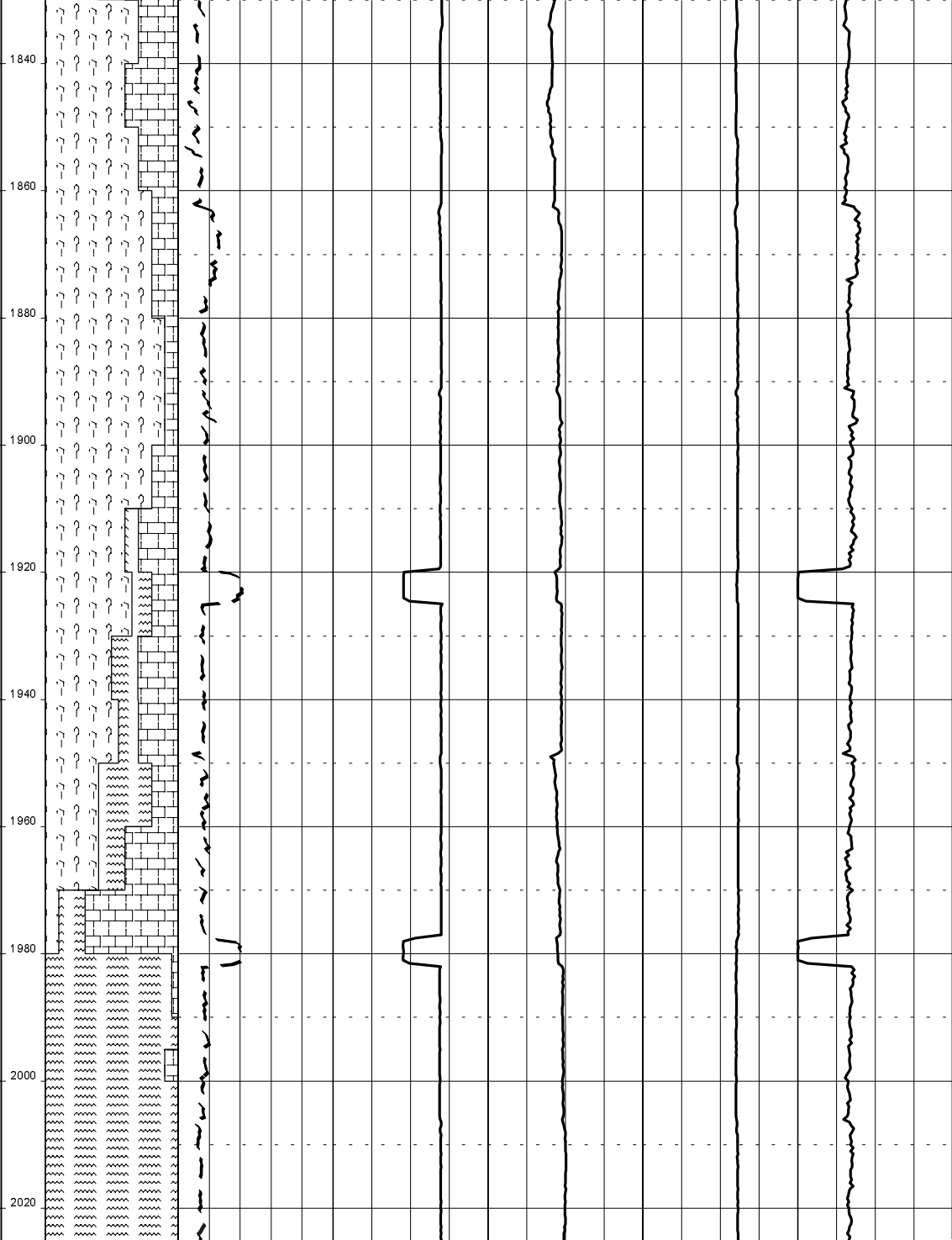




06-09-03

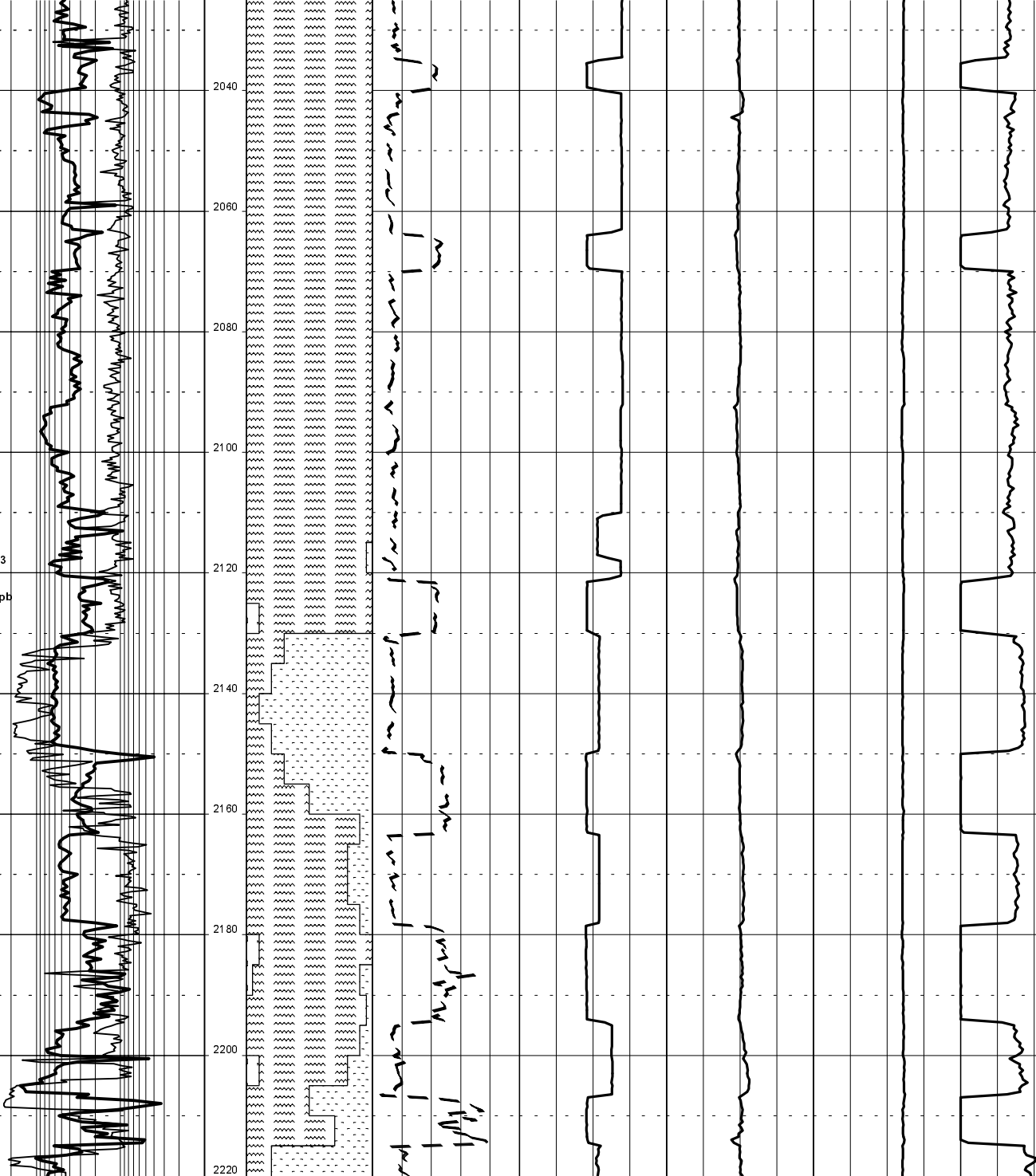


MW: 9.5
FW: 75
PV: 25
YP: 43
Gel: 11/15
pH: 9.3
Cl: 46k
KC: 29ppb



07-09-03

MW: 9.5
PV: 69
YP: 40
Gel: 10/13
pH: 9.2
CL: 47.5k
KC: 29ppb



08-09-03

09-09-03

10-09-03

MW: 9.5
FW: 64
PV: 25
TP: 31
Gel: 10/15
pH: 9.3
Cl: 490k
KCl: 30ppb

2240

2260

2280

2300

2320

2340

2360

2380

2400

Bit #2: 8½"
SMITH FG 20
Jets: 1 k30.2x24
In: 2241m
Out: 2391m
Run: 148m
Hrs: 23.4
Cond: 3-8-LC-1/2/3
F/F/F-3-CR-PR

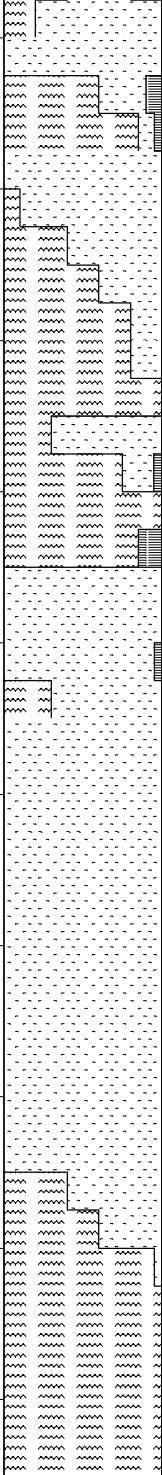
Bit #3: 8½"
SMITH FG 20
Jets: 1 k30.2x24
In: 2391m
Out: 2637m
Run: 246m
Hrs: 37.5
Cond: 3-2-WT/8T-1/2/3
E/E/E-3-ER-HR

11-09-03

MW: 9.5
PV: 64
YP: 40
Gal: 9.15
pH: 9.3
Cl: 46.5k
KC: 29ppb

MW: 9.5
PV: 64

2420
2440
2460
2480
2500
2520
2540
2560
2580
2600



11-09-03

MW: 9.5
PV: 64
YP: 40
Gal: 9.15
pH: 9.3
Cl: 46.5k
KC: 29ppb

MW: 9.5
PV: 64
YP: 40
Gal: 9.15
pH: 9.3
Cl: 46.5k
KC: 29ppb

MW: 9.5
PV: 64
YP: 40
Gal: 9.15
pH: 9.3
Cl: 46.5k
KC: 29ppb

MW: 9.5
PV: 64
YP: 40
Gal: 9.15
pH: 9.3
Cl: 46.5k
KC: 29ppb

MW: 9.5
PV: 64
YP: 40
Gal: 9.15
pH: 9.3
Cl: 46.5k
KC: 29ppb

MW: 9.5
PV: 64
YP: 40
Gal: 9.15
pH: 9.3
Cl: 46.5k
KC: 29ppb

MW: 9.5
PV: 64
YP: 40
Gal: 9.15
pH: 9.3
Cl: 46.5k
KC: 29ppb

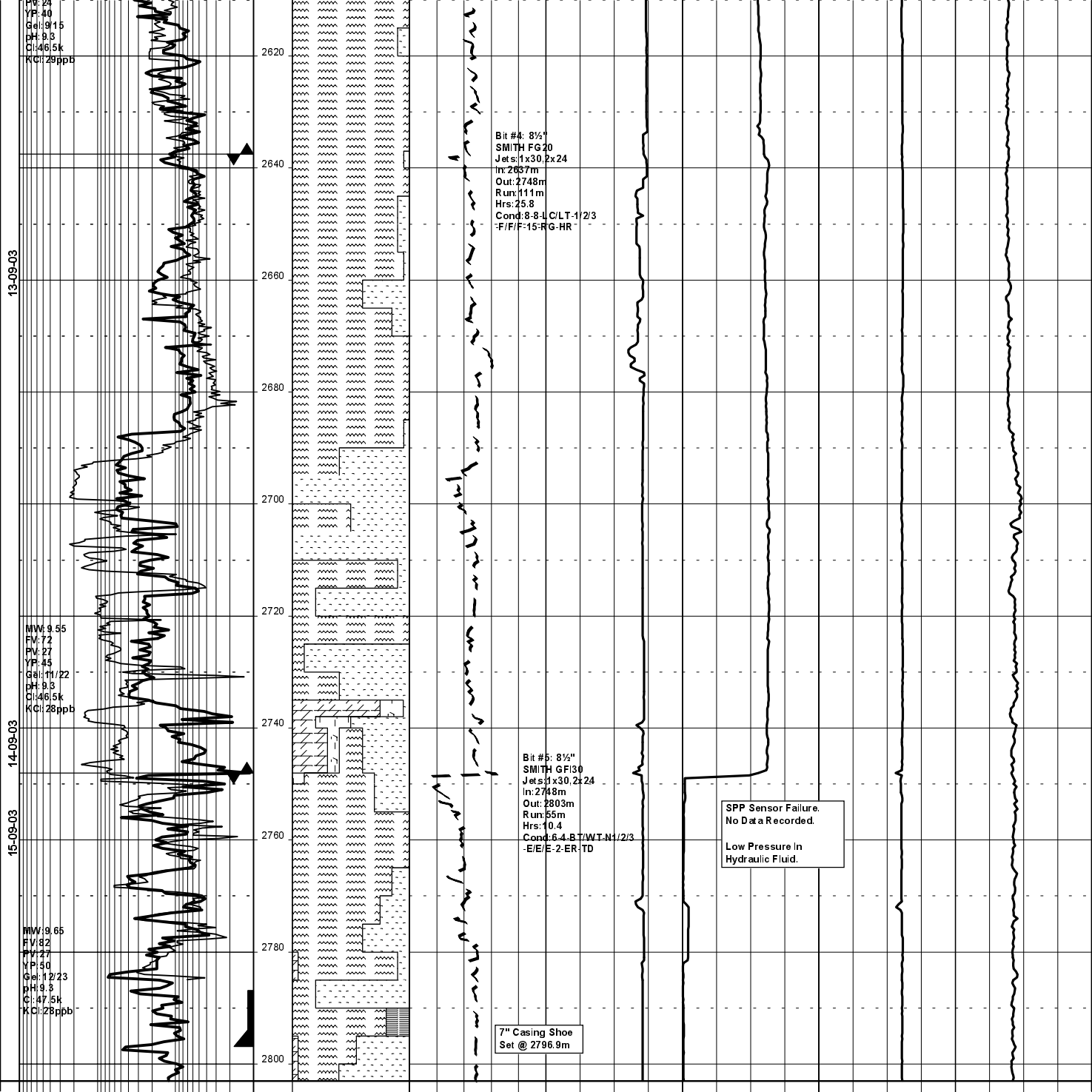
MW: 9.5
PV: 64
YP: 40
Gal: 9.15
pH: 9.3
Cl: 46.5k
KC: 29ppb

MW: 9.5
PV: 64
YP: 40
Gal: 9.15
pH: 9.3
Cl: 46.5k
KC: 29ppb

MW: 9.5
PV: 64
YP: 40
Gal: 9.15
pH: 9.3
Cl: 46.5k
KC: 29ppb

MW: 9.5
PV: 64
YP: 40
Gal: 9.15
pH: 9.3
Cl: 46.5k
KC: 29ppb

MW: 9.5
PV: 64
YP: 40
Gal: 9.15
pH: 9.3
Cl: 46.5k
KC: 29ppb



[illegible]