



COMPLEX LITHOLOGY + LDT RESULTS

| | |
|---------------------|--------------|
| Company | LAKES OIL NL |
| Well Name | Trifon-1 |
| Field | Wildcat |
| Country | Australia |
| State | ODE 30 |
| Province | |
| Field Location | Permit |
| Latitude | |
| Longitude | |
| Permanent Datum | MSL |
| Elevation of PD | .00 M |
| Elevation of KB | |
| Elevation of DF | |
| Elevation of RT | |
| Elevation Ground lv | |
| Log measured from | DF |
| Drill measured from | |
| Services | |
| DATE | |
| Service company | Schlumberger |
| Log date | 04 |
| Date computed | 22-12-00 |
| Date plotted | 22-12-2000 |
| Time plotted | 13:16:57 |

PETROLOG SOFTWARE Revision 7.00



| | |
|------------|--|
| Run number | |
|------------|--|

COMPUTATION PARAMETERS

| DEPTH INTERVAL | RW | TEMP | GR MIN | GR MAX | R CLAY | RHOB CLAY | PHIN CLAY | t CLAY | RHOH | a | m |
|-----------------|------|------|--------|--------|--------|-----------|-----------|--------|------|-----|------|
| 1231.1 - 1270.4 | .349 | 54.0 | 60 | 127 | 12 | 2.26 | .333 | 102 | .80 | .62 | 2.15 |
| 1270.6 - 1350.0 | .343 | 55.3 | 70 | 119 | 7.6 | 2.32 | .308 | 101 | .80 | .62 | 2.15 |
| 1350.1 - 1363.8 | .339 | 56.3 | 70 | 119 | 8.8 | 2.30 | .313 | 104 | .80 | .62 | 2.15 |
| 1364.0 - 1424.0 | .230 | 57.2 | 70 | 127 | 8.4 | 2.30 | .347 | 101 | .80 | .62 | 2.15 |
| 1424.1 - 1500.1 | .226 | 58.6 | 70 | 119 | 8.8 | 2.30 | .313 | 104 | .80 | .62 | 2.15 |
| 1500.2 - 2154.9 | .573 | 66.6 | 60 | 133 | 7.9 | 2.36 | .323 | 103 | .80 | .62 | 2.15 |

Since well log interpretations are opinions based upon inferences from well logs, we cannot and do not guarantee the correctness or accuracy of any interpretation. Therefore we shall not be liable or responsible for any loss, damage, cost or expense incurred or sustained by anyone resulting from any interpretation.

LITHOLOGIES



OIL



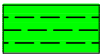
GAS



MOVED OIL



MOVED GAS



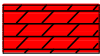
Shales



Sand Stone



Limestone



Dolomite



Rock Structure



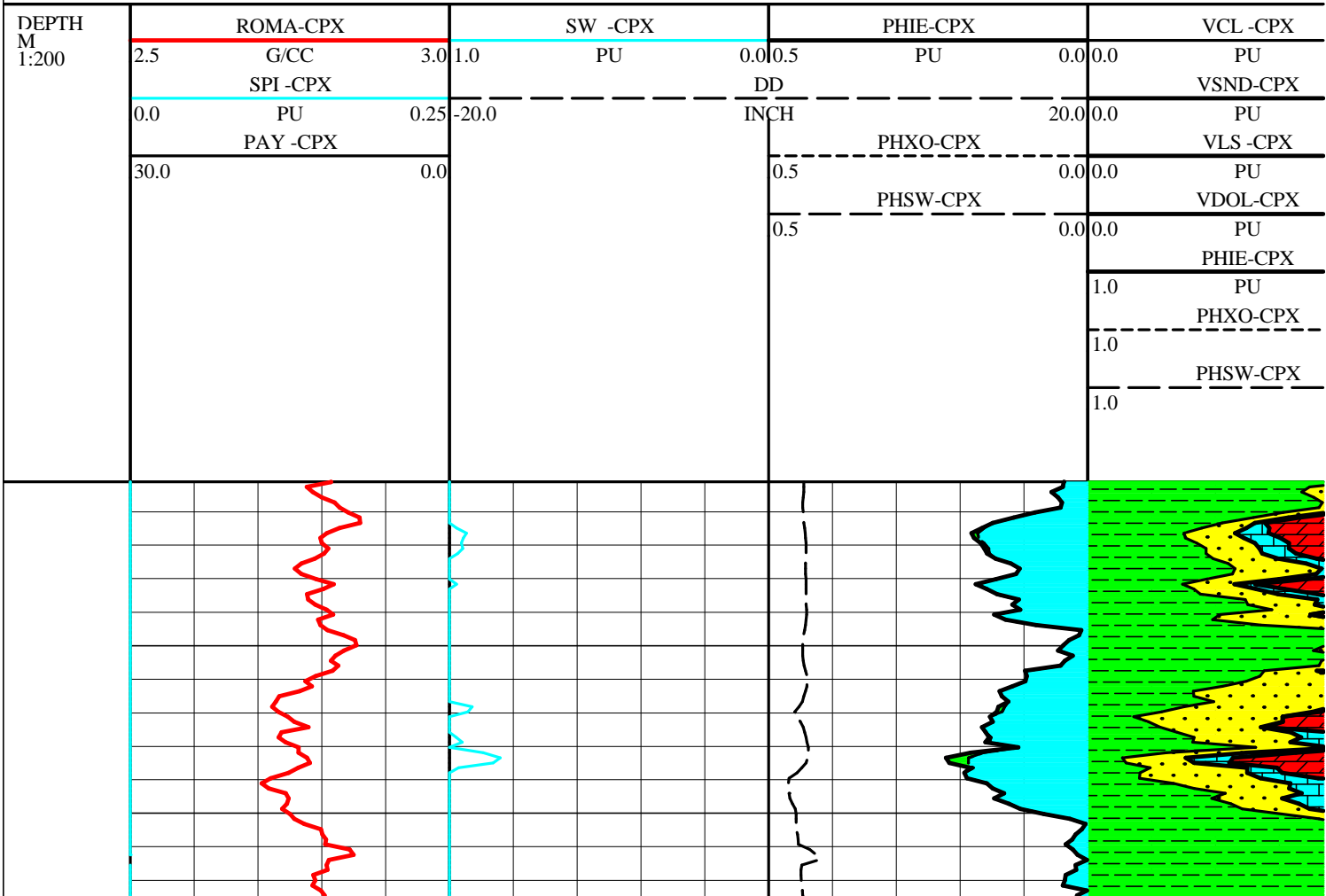
Water



Porosity

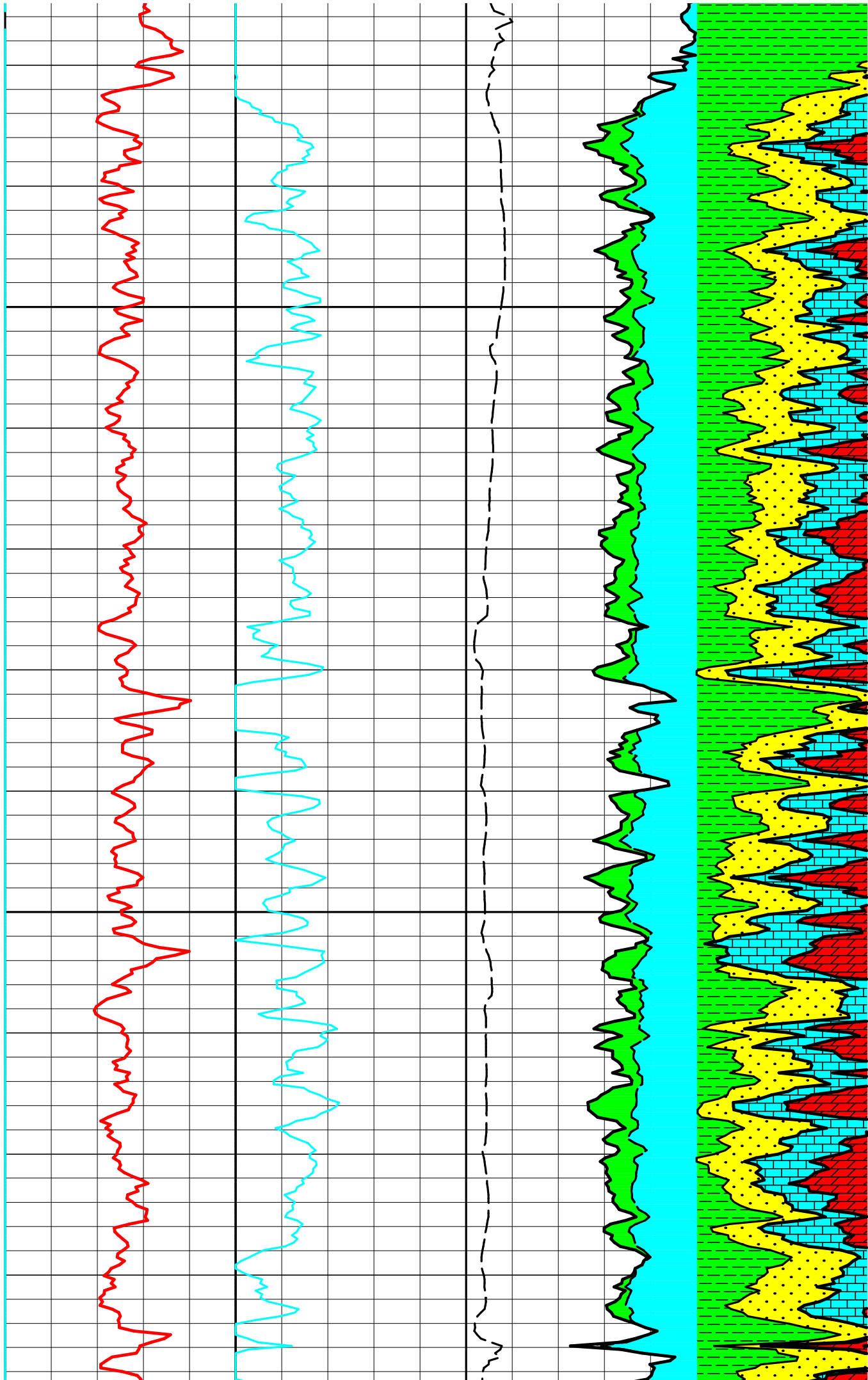
LOG DESCRIPTION

| | |
|----------|--|
| ROMA-CPX | Apparent Matrix Density (Complex Litho Model) |
| SPI -CPX | Secondary Porosity Indicator = PHIT-PHIS >=0 (Complex Litho Model) |
| PAY -CPX | Pay flag (Complex Litho Model) |
| SW -CPX | Formation Water Saturation <=1.0 (Complex Litho Model) |
| DD | Caliper-bit size |
| PHIE-CPX | Effective Porosity (Complex Litho Model) |
| PHXO-CPX | Product (PHIE * SXO) (Complex Litho Model) |
| PHSW-CPX | Product (PHIE * SW) (Complex Litho Model) |
| MINERAL | Special Mineral Table output flag (Salt,Trona,Anhydrite,Gypsum,Coal) |
| VCL -CPX | Volume of clay (Complex Litho Model) |
| VSND-CPX | Volume of Sand (Complex Litho Model) |
| VLS -CPX | Volume of Limestone (Complex Litho Model) |
| VDOL-CPX | Volume of Dolomite (Complex Litho Model) |
| PHIE-CPX | Effective Porosity (Complex Litho Model) |
| PHXO-CPX | Product (PHIE * SXO) (Complex Litho Model) |
| PHSW-CPX | Product (PHIE * SW) (Complex Litho Model) |



1375

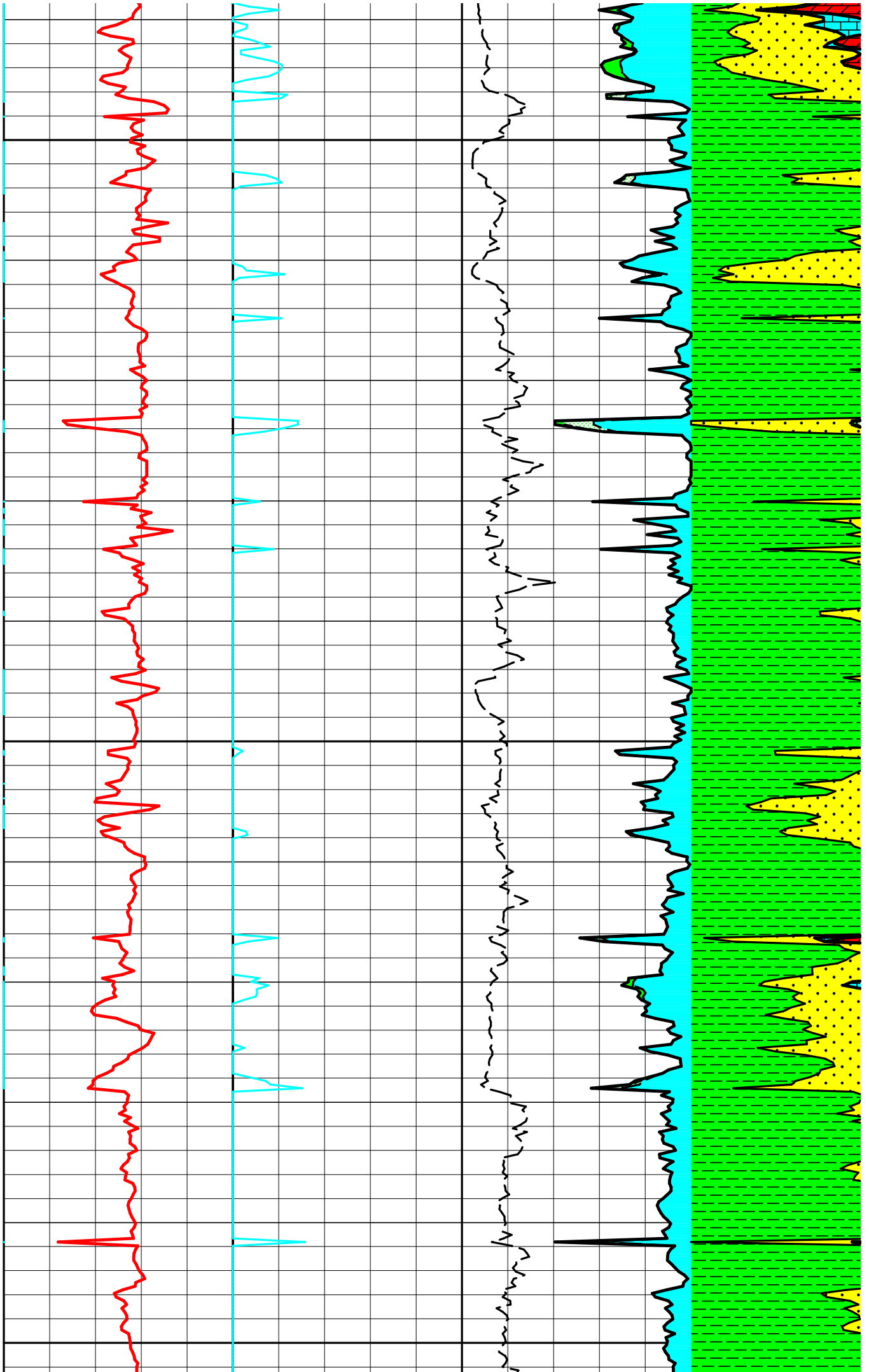
1400

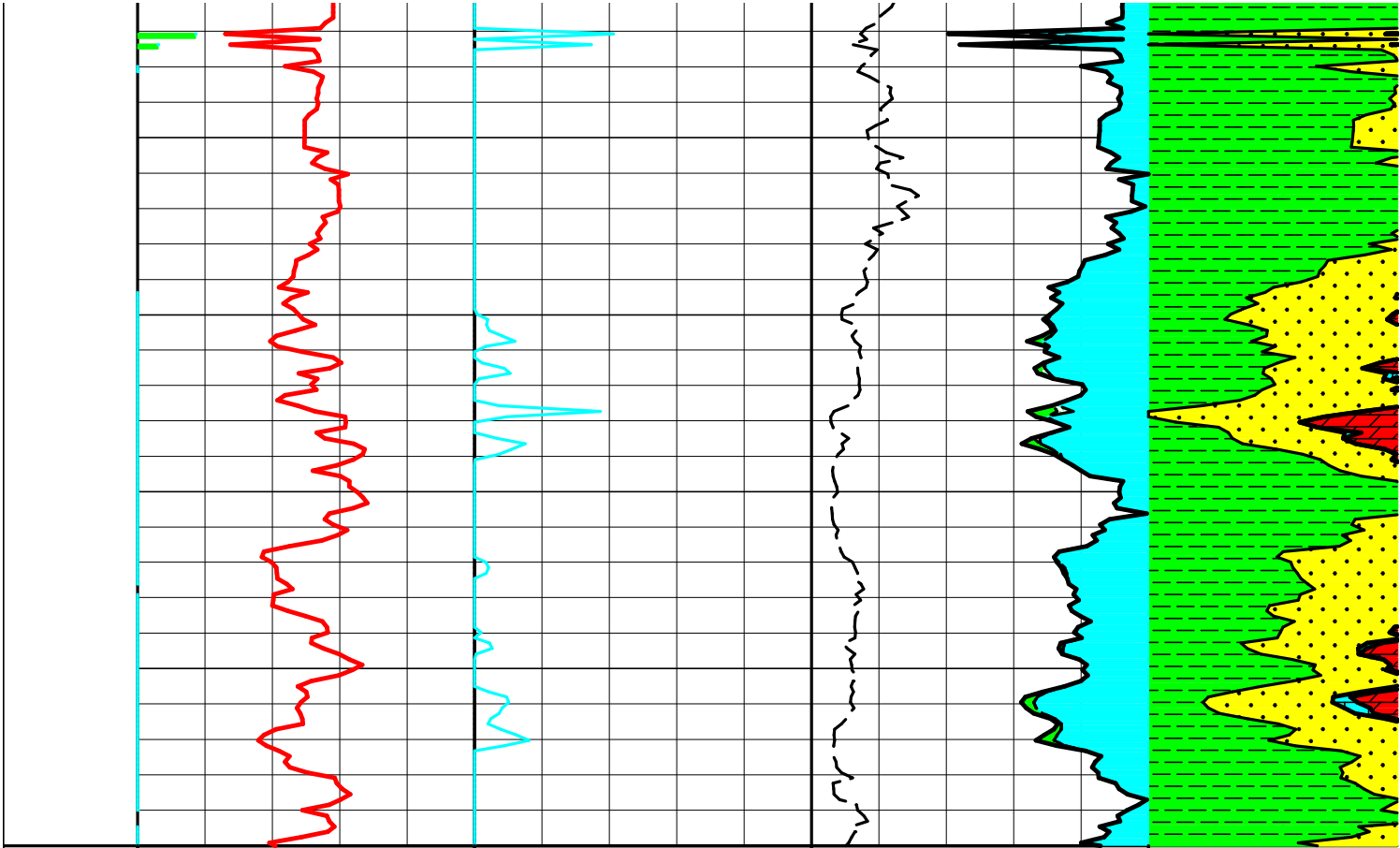


1425

1450

1475





| | | | | | | | |
|----------|------|---------|-------|----------|-----|----------|-----|
| ROMA-CPX | | SW -CPX | | PHIE-CPX | | VCL -CPX | |
| 2.5 | G/CC | 3.0 | 1.0 | 0.0 | 0.5 | 0.0 | 0.0 |
| SPI -CPX | | PU | | DD | | VSND-CPX | |
| 0.0 | PU | 0.25 | -20.0 | INCH | | 20.0 | 0.0 |
| PAY -CPX | | | | PHXO-CPX | | VLS -CPX | |
| 30.0 | | 0.0 | | 0.5 | 0.0 | 0.0 | 0.0 |
| | | | | PHSW-CPX | | VDOL-CPX | |
| | | | | 0.5 | 0.0 | 0.0 | 0.0 |
| | | | | | | PHIE-CPX | |
| | | | | | | 1.0 | |
| | | | | | | PHXO-CPX | |
| | | | | | | 1.0 | |
| | | | | | | PHSW-CPX | |
| | | | | | | 1.0 | |