

Company: Esso Australia Pty. Ltd.

Well: WEST TUNA 29L

Field: West Tuna

Rig: Crane / Prod 4

Country: Australia

GR-CCL Correlation
OWEN Tubing Patch
Setting Record

Rig: Crane / Prod 4
Field: West Tuna
Location: Gippsland
Well: WEST TUNA 29L
Company: Esso Australia Pty. Ltd.

LOCATION			
Gippsland Basin Bass Strait	Elev.:		K.B. 38.90 m
	G.L.		61.00 m
	D.F.		38.90 m
Permanent Datum:	M.S.L. _____		
Log Measured From:	K.B. _____		
Drilling Measured From:	K.B. _____		
Elev.:		0.00 m _____	
38.90 m		above Perm. Datum	

State: Victoria	Max. Well Deviation 46.5 deg	Longitude 148° 25' 05.29"E	Latitude 38° 10' 16.00"S
--------------------	---------------------------------	-------------------------------	-----------------------------

Logging Date	16-Jul-2010				
Run Number	1 & 2				
Depth Driller	1872 m				
Schlumberger Depth	1829.8 m				
Bottom Log Interval	1800 m				
Top Log Interval	1781 m				
Casing Fluid Type	Production Fluids				
Salinity					
Density					
Fluid Level	0 m				
BIT/CASING/TUBING STRING					
Bit Size	12.250 in				
From	669 m				
To	1913 m				
Casing/Tubing Size	3.500 in				
Weight	9.2 lbm/ft				
Grade	L-80				
From	17.05 m				
To	1829 m				
Maximum Recorded Temperatures	0 degF				
Logger On Bottom	16-Jul-2010		22:30		
Unit Number	Location	889	Prod 4 / AUSL		
Recorded By	S Gilbert / W. Mackenzie				
Witnessed By	J Digiovanni				

PVT DATA			
Oil Density	Run 1	Run 2	R
Water Salinity			
Gas Gravity			
Bo			
Bw			
1/Bg			
Bubble Point Pressure			
Bubble Point Temperature			
Solution GOR			
Maximum Deviation	46.5 deg		
CEMENTING DATA			
Primary/Squeeze	Primary		
Casing String No			
Lead Cement Type			
Volume			
Density			
Water Loss			
Additives			
Tail Cement Type			
Volume			
Density			
Water Loss			
Additives			
Expected Cement Top			
Logging Date			
Run Number			
Depth Driller			
Schlumberger Depth			
Bottom Log Interval			
Top Log Interval			
Casing Fluid Type			
Salinity			
Density			
Fluid Level			
BIT/CASING/TUBING STRING			
Bit Size			
From			
To			
Casing/Tubing Size			
Weight			
Grade			
From			
To			
Maximum Recorded Temperatures			
Logger On Bottom			
Unit Number	Location		
Recorded By			
Witnessed By			

Date Created: 18-JUL-2010 3:50:31

Logging Cable

Type:	2-32ZT
Serial Number:	208558
Length:	5800 M
Conveyance Method:	Wireline
Rig Type:	Offshore Fixed

Log Sequence:	Subsequent Trip To the Well
Reference Log Name:	SOLAR COMPOSITE / TUBING TALLY
Reference Log Run Number:	
Reference Log Date:	UNKNOWN
Subsequent Trip Down Log Correction:	

1. Rigged up on main deck using platform crane
2. Tool zero referenced from tubing hanger at 17.05m
3. Depth correlated over interval 1829m – 1750m MDKB
4. IDW used as primary depth control, Z-chart as secondary
5. .
6. .

THE USE OF AND RELIANCE UPON THIS RECORDED-DATA BY THE HEREIN NAMED COMPANY (AND ANY OF ITS AFFILIATES, PARTNERS, REPRESENTATIVES, AGENTS, CONSULTANTS AND EMPLOYEES) IS SUBJECT TO THE TERMS AND CONDITIONS AGREED UPON BETWEEN SCHLUMBERGER AND THE COMPANY, INCLUDING: (a) RESTRICTIONS ON USE OF THE RECORDED-DATA; (b) DISCLAIMERS AND WAIVERS OF WARRANTIES AND REPRESENTATIONS REGARDING COMPANY'S USE OF AND RELIANCE UPON THE RECORDED-DATA; AND (c) CUSTOMER'S FULL AND SOLE RESPONSIBILITY FOR ANY INFERENCE DRAWN OR DECISION MADE IN CONNECTION WITH THE USE OF THIS RECORDED-DATA.













OTHER SERVICES2
OS1:
OS2:
OS3:
OS4:
OS5:

REMARKS: RUN NUMBER 2

Depth difference between OH Log and Tubing Tally = 0.1m

Tubing Patch TOS @ 1781m MDKB
CCL to TOS = 3.5m
CCL Stop Depth @ 1777.5 m MDKB
All Depth MDKB unless otherwise noted.
Schlumberger crews: Brendan Glover , Darren Watts

RUN 1			RUN 2		
SERVICE ORDER #:		4500659501	SERVICE ORDER #:		
PROGRAM VERSION:		17C0-154	PROGRAM VERSION:		
FLUID LEVEL:		0 m	FLUID LEVEL:		
LOGGED INTERVAL	START	STOP	LOGGED INTERVAL	START	STOP

EQUIPMENT DESCRIPTION					
RUN 1			RUN 2		
SURFACE EQUIPMENT			SURFACE EQUIPMENT		
WITM (SHM)			WITM (SHM)		
DOWNHOLE EQUIPMENT			DOWNHOLE EQUIPMENT		
MH-SWHS-A 759 MH-SWHS-A 759 ERS ERS-E EQF-43 EQF-43		5.87 5.56 5.18 3.35	MH-SWHS-A 759  24.89 ERS 1118  24.58 SAH-G 1032  24.19 UPCT-A 445 Gamma Ray  23.79 UPCC-A 445 Casing Co UPCH-A 517 Tension  — TOOL ZERO AH-ESIC 15042002  22.43 AH-SAFE Firing Head  22.01 AH-Setting Tool  21.50 AH-Setting Tool  AH-Owen Patch  18.90 AH-Owen Patch 		

UPCT-A 445
UPCC-A 445
UPCH-A 517

Gamma Ray

0.79

1.52

Casing Co
Tension

TOOL ZERO

AH-BNS
AH-BNS

0.15

PLUG

TOOL BOTTOM

0.00

MAXIMUM STRING DIAMETER 1.72 IN
MEASUREMENTS RELATIVE TO TOOL ZERO
ALL LENGTHS IN METERS

SAFE
SHM_GUN

TOOL BOTTOM

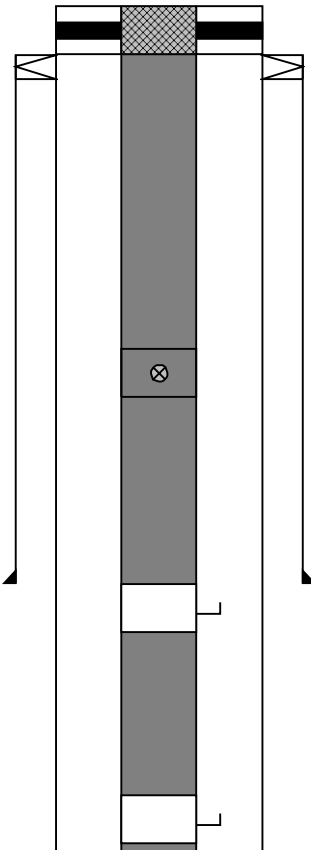
0.00
0.00

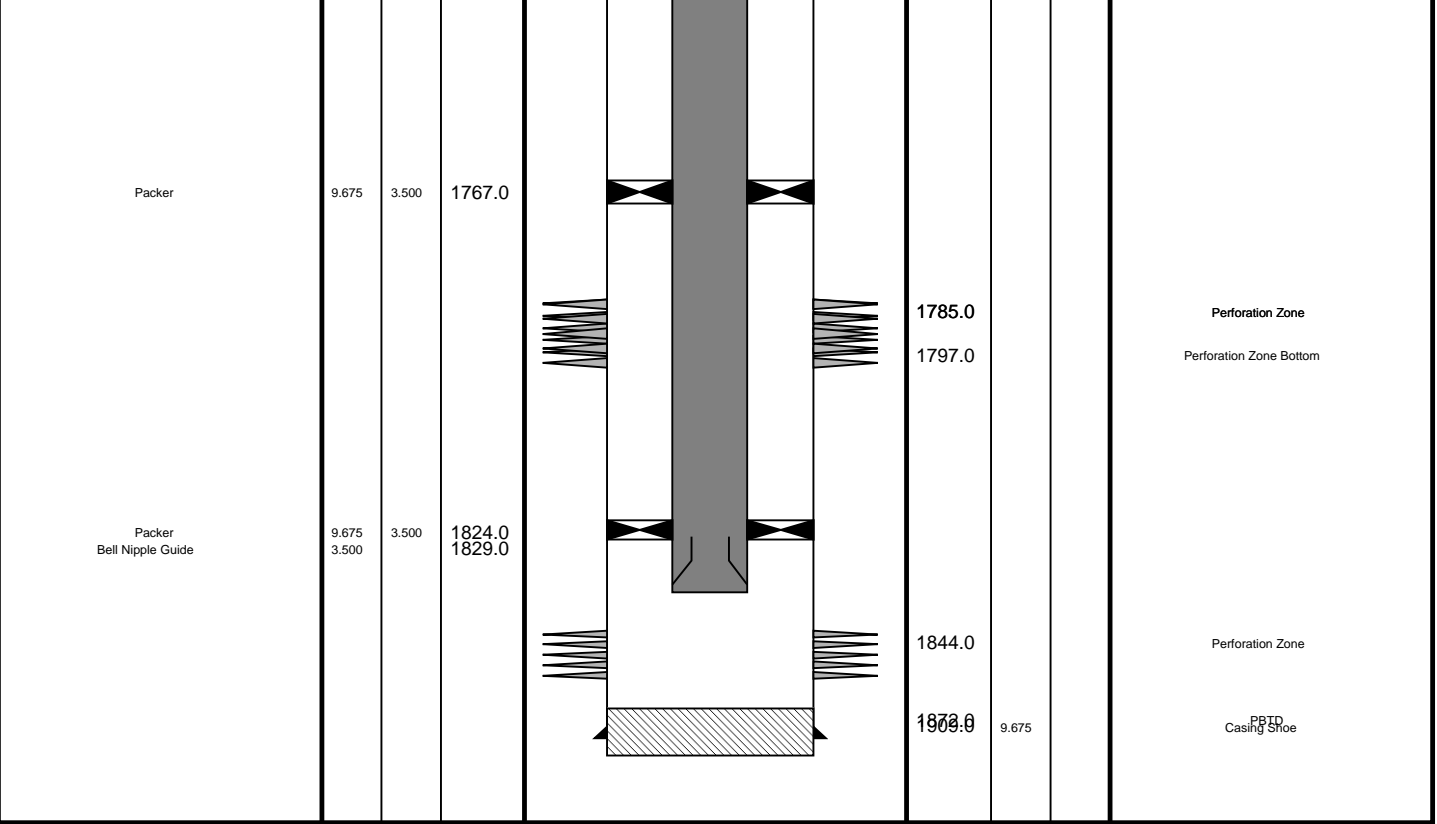
MAXIMUM STRING DIAMETER 2.75 IN
MEASUREMENTS RELATIVE TO TOOL ZERO
ALL LENGTHS IN METERS

Client: ESSO Australia Pty Ltd
Well: W-29L
Field: West Tuna
State: Victoria
Country: Australia

Drawing Date: 7/10/2010
API #:

Rig Name: Prod 4 / Crane
Reference Datum:
Elevation: 38.9 m

Production String	(in)		(m)	Well Schematic	(m)		(in)	Casing String
	OD	ID	MD		MD	OD	ID	
Tubing Hanger	9.675	3.500	17.0		17.4	13.375	9.675	Casing String Liner Hanger
Tubing	3.500		17.1		17.6	13.375		
Shutin Valve	3.500		439.0					
Gas Lift Mandrel	3.500		972.0		669.0	13.375		Casing Shoe
Gas Lift Mandrel	3.500		1727.0					



Job Events Summary

MAXIS Field Log

Schlumberger Job Event Summary

	Time	Elapsed Time	Depth (M)	File
Log Pass (up) GR-CCL Pass	16-Jul-2010 22:36	000:13	1832.3 - 1697.6	PLUG_007LUP
Log Pass (up) Correlation Pass	17-Jul-2010 23:12	000:04	1799.4 - 1763.0	PERFO_028LUP
Log Pass (up) Setting Pass	17-Jul-2010 23:18	000:17	1800.3 - 1707.6	PERFO_029LUP

Company: Esso Australia Pty. Ltd.

Well: WEST TUNA 29L

Output DLIS Files

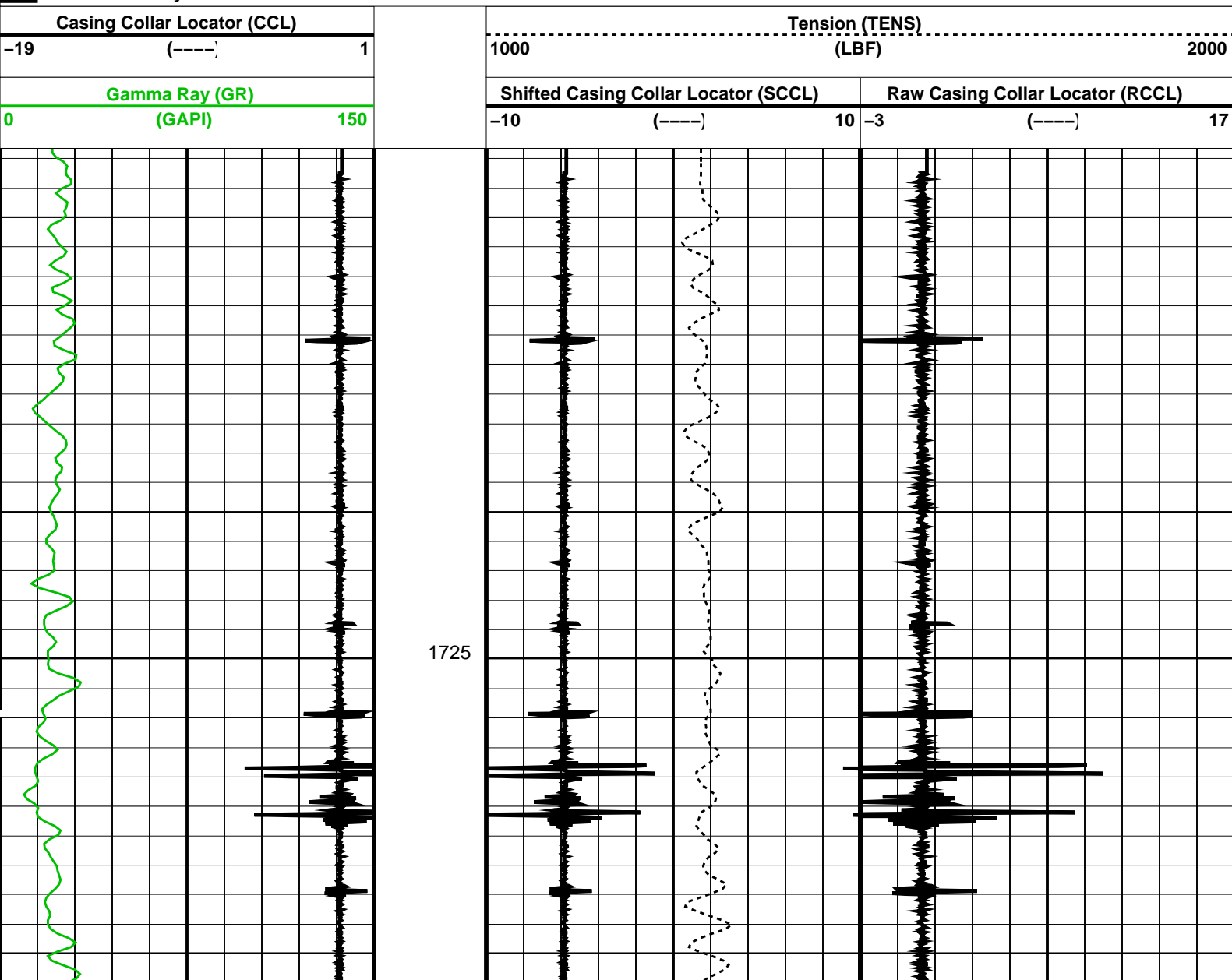
DEFAULT	PERFO_029LUP	FN:32	PRODUCER	17-Jul-2010 23:18	1800.3 M	1707.6 M
CUSTOMER	PERFO_029LUC	FN:33	CUSTOMER	17-Jul-2010 23:18	1800.3 M	1707.6 M

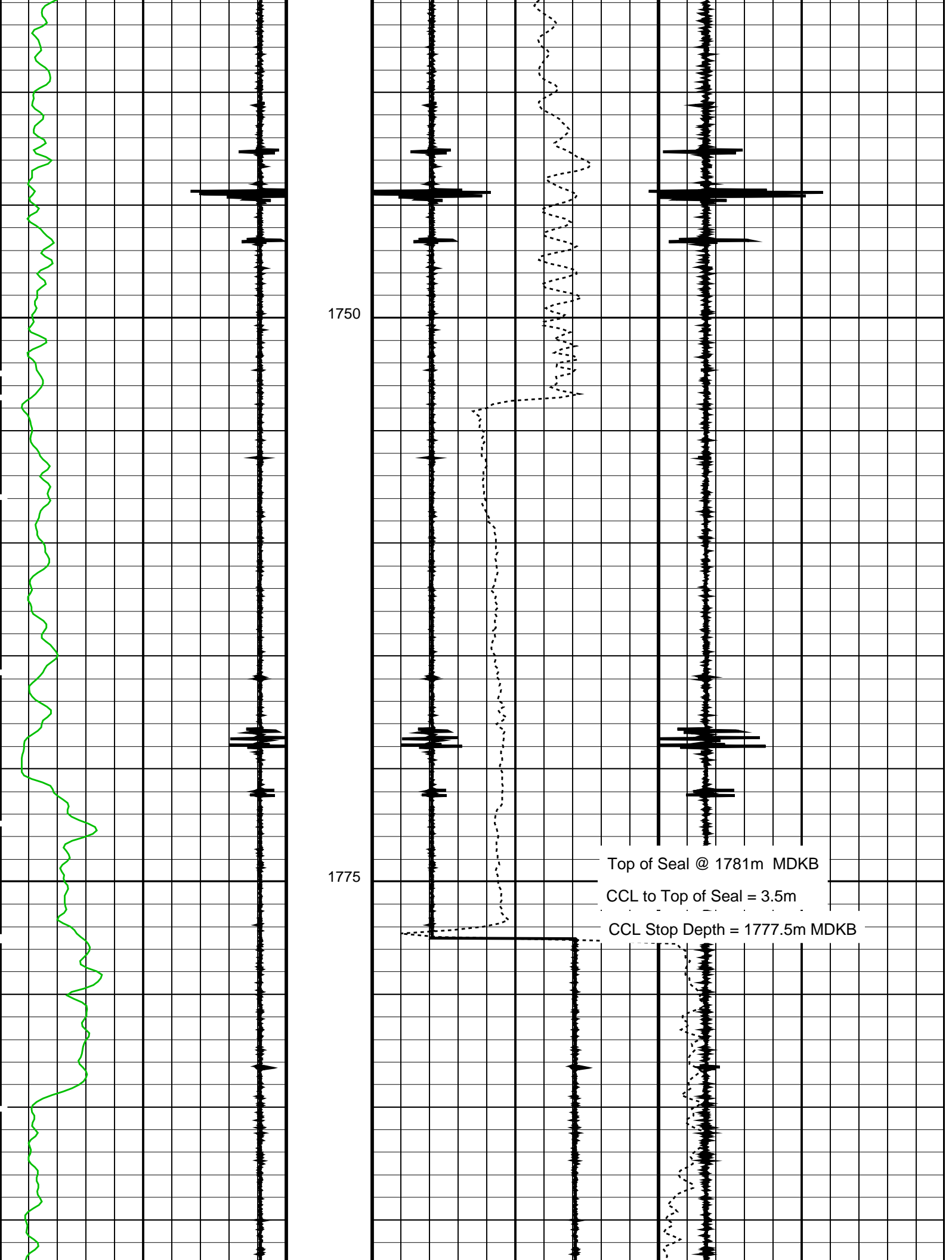
OP System Version: 17C0-154

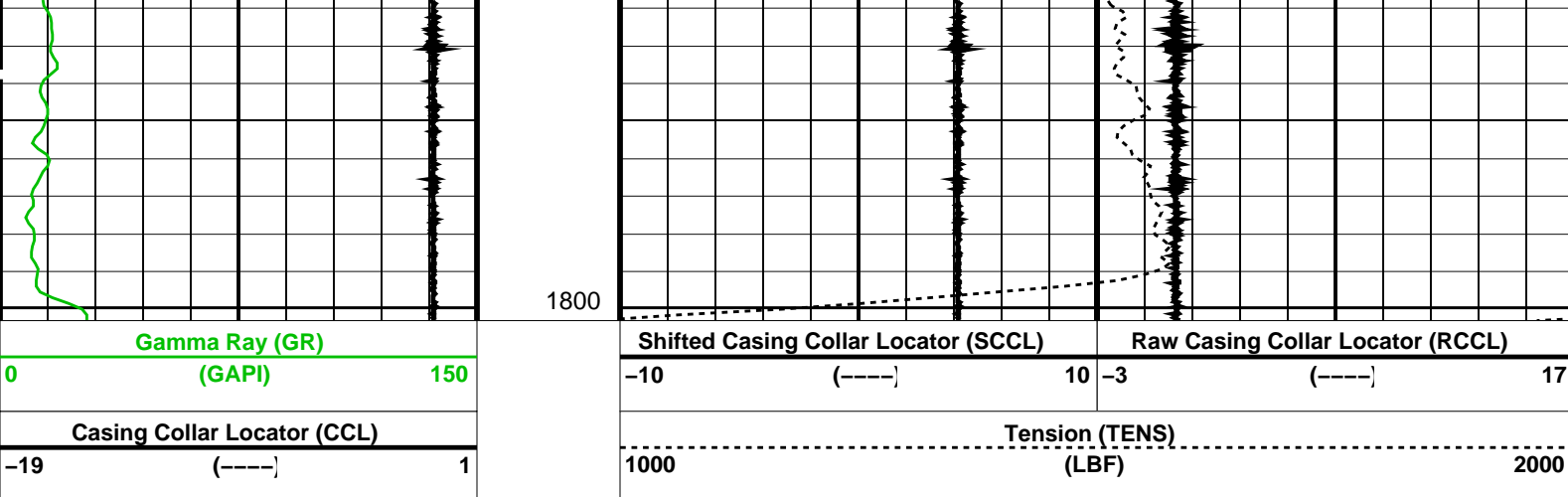
SHM_GUN	17C0-154	SAFE	17C0-154
UPCT-A	17C0-154	ERS	17C0-154

PIP SUMMARY

☒ Time Mark Every 60 S







PIP SUMMARY

Time Mark Every 60 S

Format: PERFO Vertical Scale: 1:200

Graphics File Created: 17-Jul-2010 23:18

OP System Version: 17C0-154

SHM_GUN	17C0-154	SAFE	17C0-154
UPCT-A	17C0-154	ERS	17C0-154

Output DLIS Files

DEFAULT	PERFO_029LUP	FN:32	PRODUCER	17-Jul-2010 23:18
CUSTOMER	PERFO_029LUC	FN:33	CUSTOMER	17-Jul-2010 23:18

Schlumberger

Tubing Patch Correlation Pass

MAXIS Field Log

Company: Esso Australia Pty. Ltd.

Well: WEST TUNA 29L

Output DLIS Files

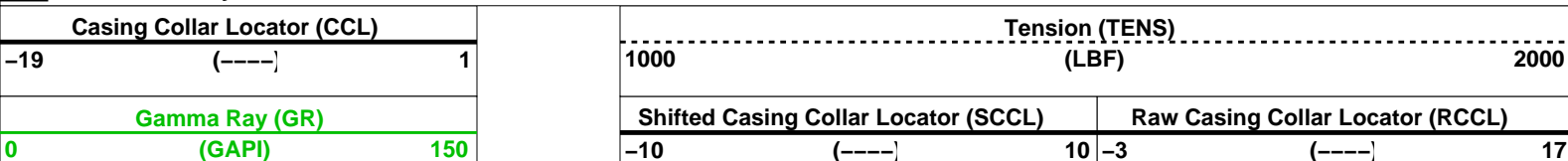
DEFAULT	PERFO_028LUP	FN:30	PRODUCER	17-Jul-2010 23:12	1799.4 M	1763.1 M
CUSTOMER	PERFO_028LUC	FN:31	CUSTOMER	17-Jul-2010 23:12	1799.4 M	1763.1 M

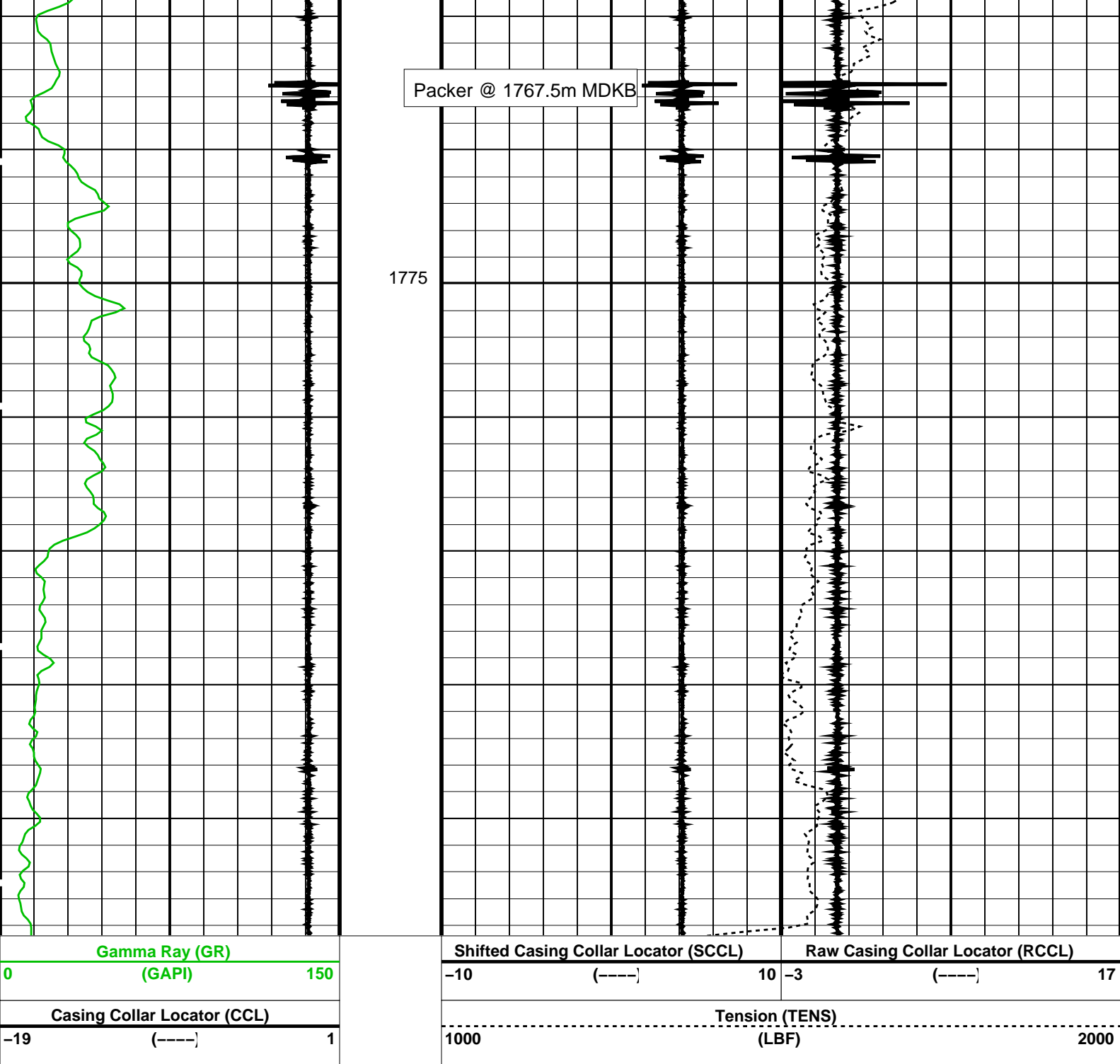
OP System Version: 17C0-154

SHM_GUN	17C0-154	SAFE	17C0-154
UPCT-A	17C0-154	ERS	17C0-154

PIP SUMMARY

Time Mark Every 60 S





PIP SUMMARY					
Time Mark Every 60 S					
Format: PERFO			Vertical Scale: 1:200		Graphics File Created: 17-Jul-2010 23:12
OP System Version: 17C0-154					
SHM_GUN	17C0-154	SAFE	17C0-154		
UPCT-A	17C0-154	ERS	17C0-154		
Output DLIS Files					
DEFAULT	PERFO_028LUP	FN:30	PRODUCER	17-Jul-2010 23:12	
CUSTOMER	PERFO_028LUC	FN:31	CUSTOMER	17-Jul-2010 23:12	

MAXIS Field Log

Company: Esso Australia Pty. Ltd.

Well: WEST TUNA 29L

Input DLIS Files

DEFAULT	PLUG_007LUP	FN:6	PRODUCER	16-Jul-2010 22:36	1832.3 M	1697.6 M
---------	-------------	------	----------	-------------------	----------	----------

Output DLIS Files

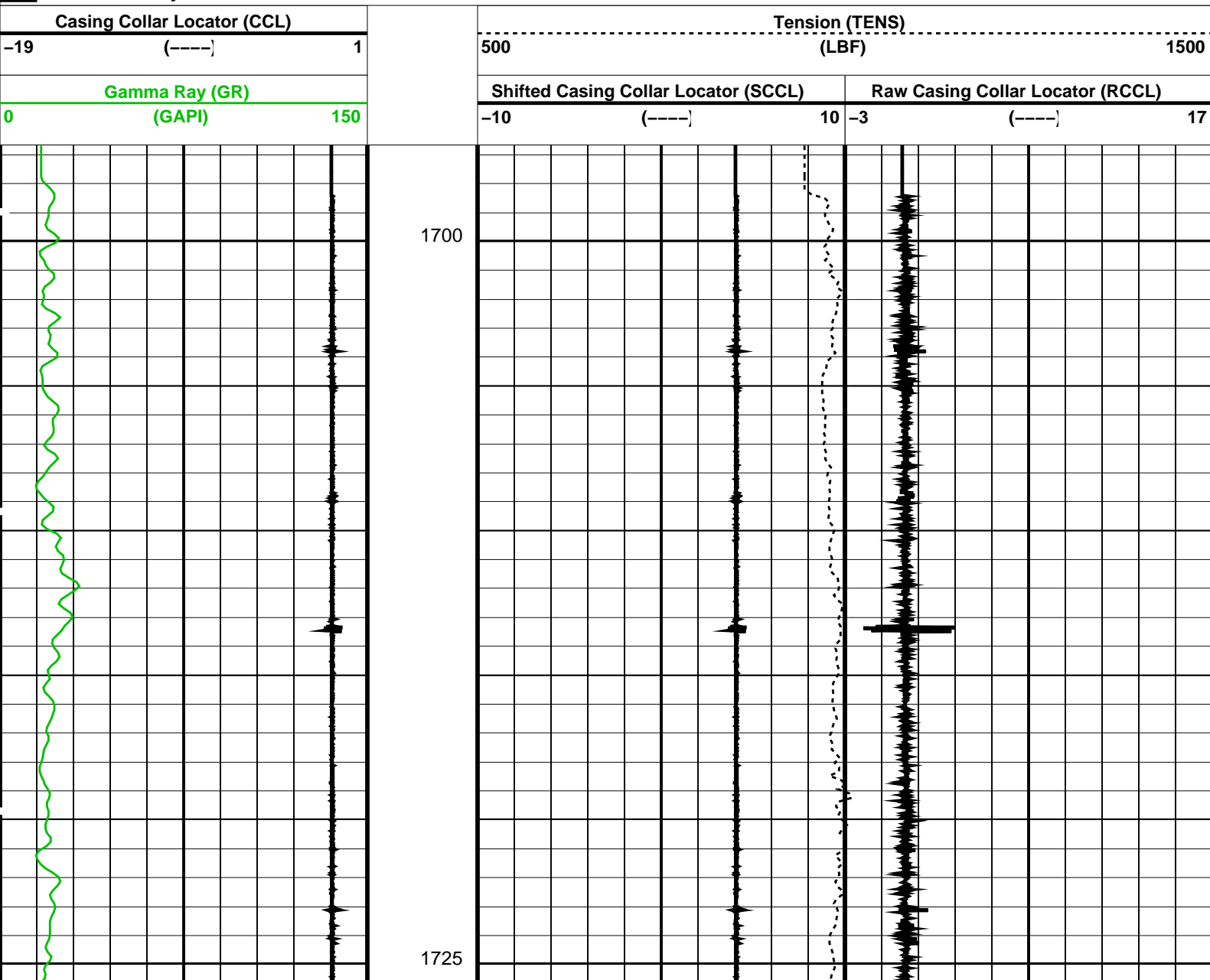
DEFAULT	PLUG_009PUP	FN:8	PRODUCER	16-Jul-2010 22:55	1832.2 M	1696.5 M
---------	-------------	------	----------	-------------------	----------	----------

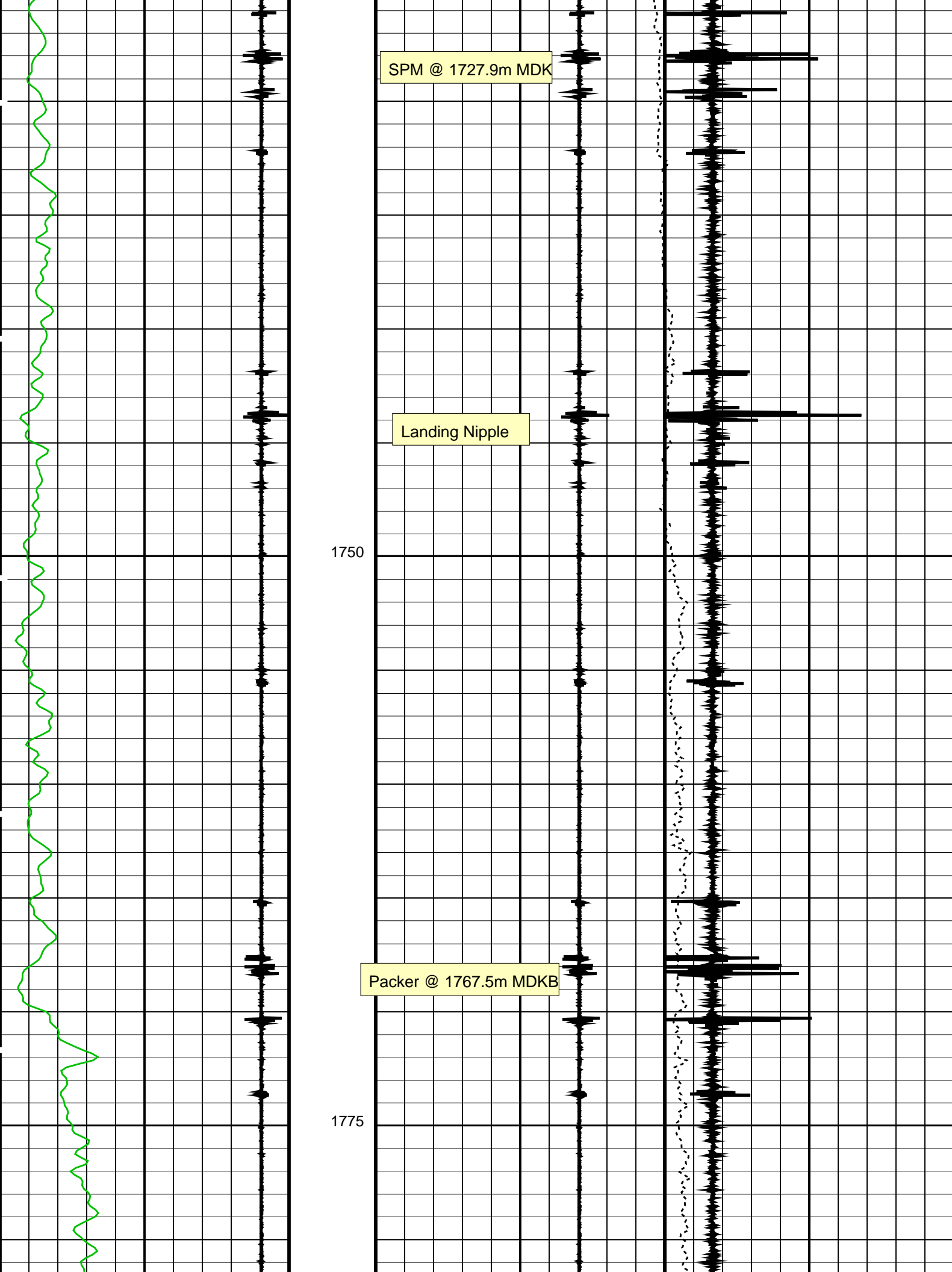
OP System Version: 17C0-154

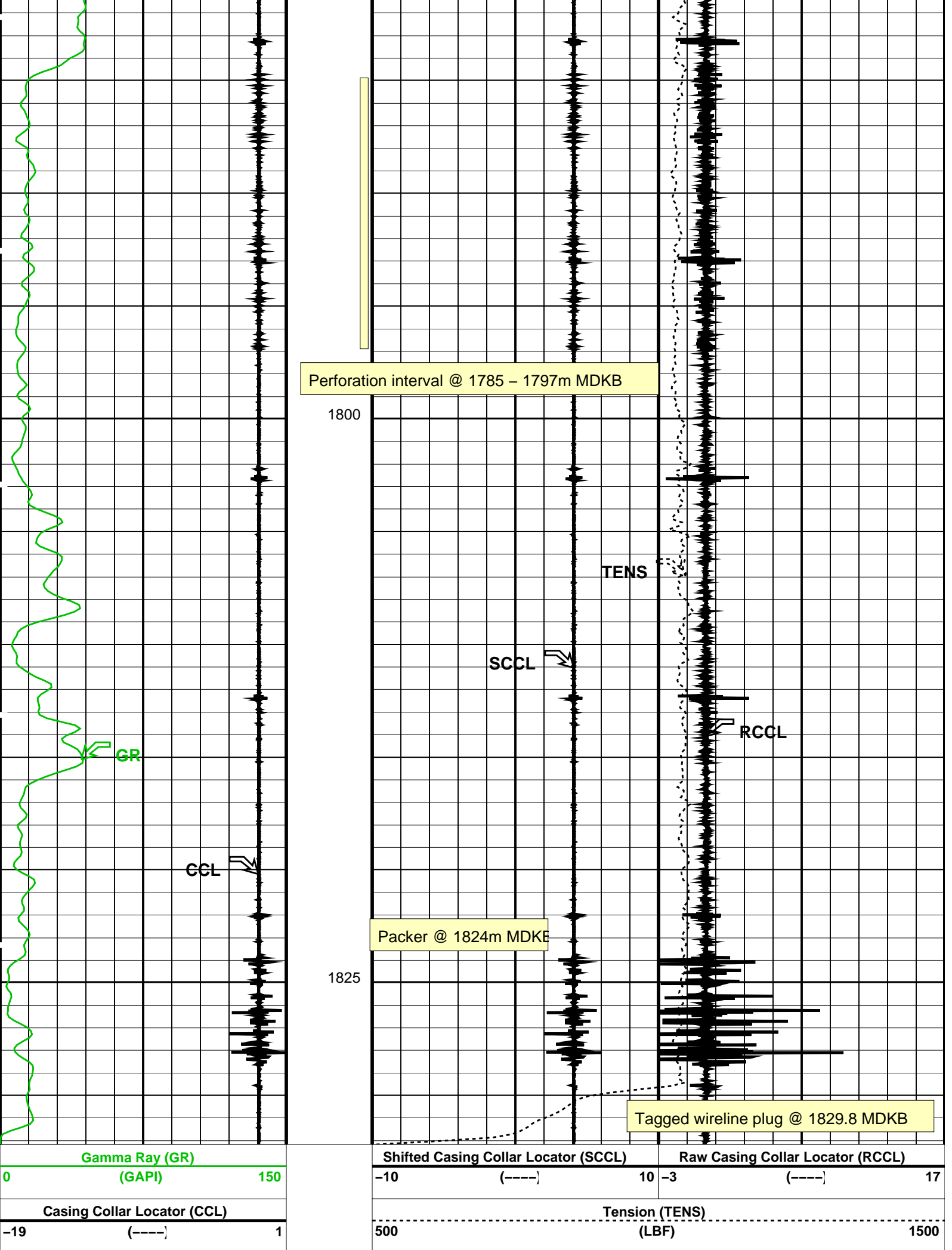
PLUG	17C0-154	UPCT-A	17C0-154
ERS	17C0-154		

PIP SUMMARY

Time Mark Every 60 S







 Time Mark Every 60 S

Parameters

DLIS Name	Description	Value
-----------	-------------	-------

System and Miscellaneous

DO	Depth Offset for Playback	-0.1 M
PP	Playback Processing	NORMAL

Format: PERFO Vertical Scale: 1:200

Graphics File Created: 16-Jul-2010 22:55

OP System Version: 17C0-154

PLUG	17C0-154	UPCT-A	17C0-154
ERS	17C0-154		

Input DLIS Files

DEFAULT	PLUG_007LUP	FN:6	PRODUCER	16-Jul-2010 22:36	1832.3 M	1697.6 M
---------	-------------	------	----------	-------------------	----------	----------

Output DLIS Files

DEFAULT	PLUG_009PUP	FN:8	PRODUCER	16-Jul-2010 22:55
---------	-------------	------	----------	-------------------

Company: **Esso Australia Pty. Ltd.****Schlumberger**Well: **WEST TUNA 29L**Field: **West Tuna**Rig: **Crane / Prod 4**Country: **Australia**

GR-CCL Correlation

OWEN Tubing Patch

Setting Record