

Company: Esso Australia Pty Ltd.

Well: SNAPPER A28

Field: Snapper

Rig: RIG 175

Country: Australia

GR-CCL
MaxR Correlation
3-Jul-2010

Bass Strait

Elev.:
K.B. 41.68 m
G.L. -55.00 m
D.F. 41.68 m

Permanent Datum: MSL
Log Measured From: DF
Drilling Measured From: DF

Elev.: 0.00 m
41.68 m above Perm. Datum

Rig: RIG 175
Field: Snapper
Location: Bass Strait
Well: SNAPPER A28
Company: Esso Australia Pty Ltd.

LOCATION

State: Victoria

Max. Well Deviation
83.09 deg

Longitude
148 1' 31.554" E

Latitude
38 11' 37.777" S

Logging Date	3-Jul-2010		
Run Number	1		
Depth Driller	5382 m		
Schlumberger Depth	4925 m		
Bottom Log Interval	4913 m		
Top Log Interval	4850 m		
Casing Fluid Type	Filtered Seawater		
Salinity			
Density	1.02 g/cm3		
Fluid Level	0 m		
BIT/CASING/TUBING STRING			
Bit Size	9.500 in		
From	3955.7 m		
To	5382 m		
Casing/Tubing Size	7.000 in		
Weight	26 lbn/ft		
Grade	L-80		
From	3805 m		
To	5380 m		
Maximum Recorded Temperatures			
Logger On Bottom	3-Jul-2010	Time	15:00
Unit Number	3829	Location	AUSL
Recorded By	C.Rowand / O.Darby		
Witnessed By	D. Daniels / A.Chow / R.Williams		

PVT DATA			
Oil Density	Run 1	Run 2	R
Water Salinity			
Gas Gravity			
Bo			
Bw			
1/Bg			
Bubble Point Pressure			
Bubble Point Temperature			
Solution GOR			
Maximum Deviation	83.09 deg		
CEMENTING DATA			
Primary/Squeeze	Primary		
Casing String No			
Lead Cement Type			
Volume			
Density	15 lbn/gal		
Water Loss			
Additives			
Tail Cement Type			
Volume			
Density			
Water Loss			
Additives			
Expected Cement Top			
Logging Date			
Run Number			
Depth Driller			
Schlumberger Depth			
Bottom Log Interval			
Top Log Interval			
Casing Fluid Type			
Salinity			
Density			
Fluid Level			
BIT/CASING/TUBING STRING			
Bit Size			
From			
To			
Casing/Tubing Size			
Weight			
Grade			
From			
To			
Maximum Recorded Temperatures			
Logger On Bottom	Time		
Unit Number	Location		
Recorded By			
Witnessed By			

Date Created: 3-JUL-2010 18:57:41

Logging Cable

Type:	7-46ZV XS
Serial Number:	709205
Length:	7050 M
Conveyance Method:	Wireline
Rig Type:	Offshore Fixed

Log Sequence:	Subsequent Trip To the Well
Reference Log Name:	LWD EsoScope
Reference Log Run Number:	
Reference Log Date:	10-Jun-2010
Subsequent Trip Down Log Correction:	

1. Used IDW as primary depth control
2. Used Z-Chart as secondary depth control
3. All depths are MDKB
4. The USIT reference log was correlated to the Client provided LWD Ecoscope log over the interval 4915–4945m
5. The USIT log was used, as the LWD GR perforation depth couldn't be accessed. Wireline depth stretches to LWD
6. depth by 2m over the 100m above the perforation interval.

THE USE OF AND RELIANCE UPON THIS RECORDED-DATA BY THE HEREIN NAMED COMPANY (AND ANY OF ITS AFFILIATES, PARTNERS, REPRESENTATIVES, AGENTS, CONSULTANTS AND EMPLOYEES) IS SUBJECT TO THE TERMS AND CONDITIONS AGREED UPON BETWEEN SCHLUMBERGER AND THE COMPANY, INCLUDING: (a) RESTRICTIONS ON USE OF THE RECORDED-DATA; (b) DISCLAIMERS AND WAIVERS OF WARRANTIES AND REPRESENTATIONS REGARDING COMPANY'S USE OF AND RELIANCE UPON THE RECORDED-DATA; AND (c) CUSTOMER'S FULL AND SOLE RESPONSIBILITY FOR ANY INFERENCE DRAWN OR DECISION MADE IN CONNECTION WITH THE USE OF THIS RECORDED-DATA.

OTHER SERVICES2
OS1:
OS2:
OS3:
OS4:
OS5:

REMARKS: RUN NUMBER 2

Log correlated to USIT-GR log of 30-Jun-2010.

GR-CCL

Procedure:

Drill crew with TCP supervisor will make up 4-1/2" HSD guns and MaxR setting








assembly to drill pipe, RIH with drill pipe located guns at perforation interval

SLB crew to rig up wireline through cable side entry sub, RIH with toolstring incorporating GR-CCL until the toolstring holds up due to high deviation, utilize rig pumps to pump toolstring downhole.
Correlate pip tags installed in R.A sub above MaxR on depth, change drill pipe depth to suit / mark POOH, rig down.

Crew: Rick Murray & Daniel Halstead (Days)
Kevin Kerr & Gary Martin (Nights)

RUN 1			RUN 2		
SERVICE ORDER #:			SERVICE ORDER #:		
PROGRAM VERSION:			PROGRAM VERSION:		
FLUID LEVEL:			FLUID LEVEL:		
LOGGED INTERVAL	START	STOP	LOGGED INTERVAL	START	STOP

EQUIPMENT DESCRIPTION

RUN 1		RUN 2	
SURFACE EQUIPMENT			
WITM (SHM)			
DOWNHOLE EQUIPMENT			
MH-PEH-EF MH-PEH-EF 1004		6.07	
AH-38		5.27	
PGGT-CC PGGC 265 PGGH-A 265		5.18	
Gamma Ray		0.48	
Casing Co Tension		TOOL ZERO	
AH-Pump down sub AH-Pump down sub		3.23	
AH-Pump down sub		2.58	

AH-Pump down sub

EQF-46
EQF-46 3001

1.93

AH-Bottom nose

0.10

TOOL BOTTOM

MAXIMUM STRING DIAMETER 2.13 IN
MEASUREMENTS RELATIVE TO TOOL ZERO
ALL LENGTHS IN METERS

Client: Esso Australia Pty Ltd

Well: SNA A28

Field: Snapper

State: Victoria

Country: Australia

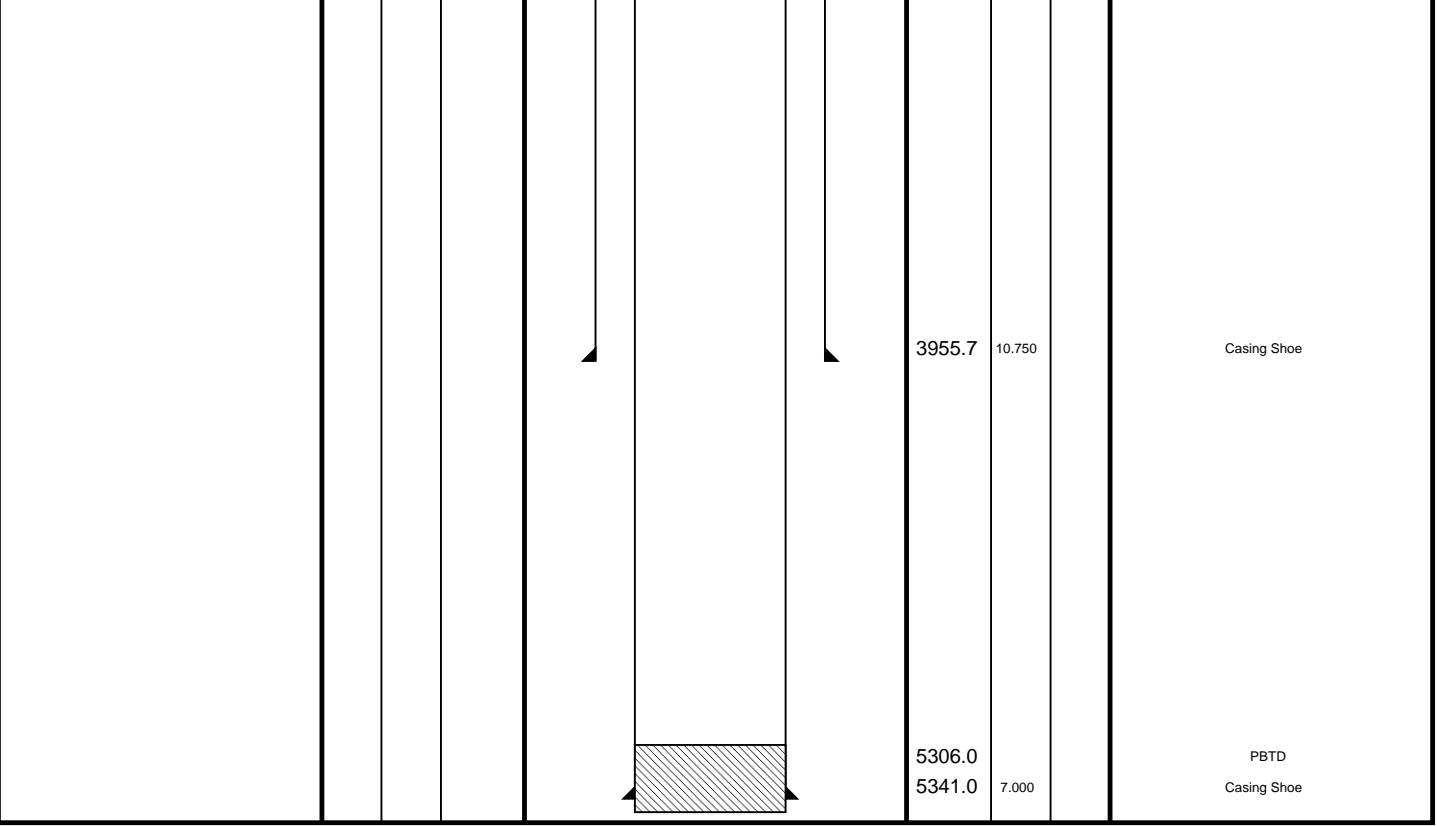
Drawing Date: 6/27/2010

Rig Name: 175

Reference Datum: Mean Sea Level

Elevation: 41.7 m

Production String	(in)		(m)	Well Schematic		(m)	(in)		Casing String	
	OD	ID	MD			MD	OD	ID		
						21.5	10.380	Casing String Liner Hanger		
						21.5	13.380	10.750		
						1050.0	13.380	Casing Shoe		
						3805.0	7.000	Casing String Liner Hanger		
						3805.0	10.750	7.000		



Job Events Summary

MAXIS Field Log

Schlumberger Job Event Summary				
	Time	Elapsed Time	Depth (M)	File
Log Pass (up) Correlation log	3-Jul-2010 17:22	000:08	4916.4 - 4847.7	PERFO_028LUP

Company: Esso Australia Pty Ltd.

Well: SNAPPER A28

Output DLIS Files

DEFAULT

PERFO_028LUP

FN:34

PRODUCER

03-Jul-2010 17:22

4916.4 M

4847.7 M

OP System Version: 17C0-154

SHM_GUN

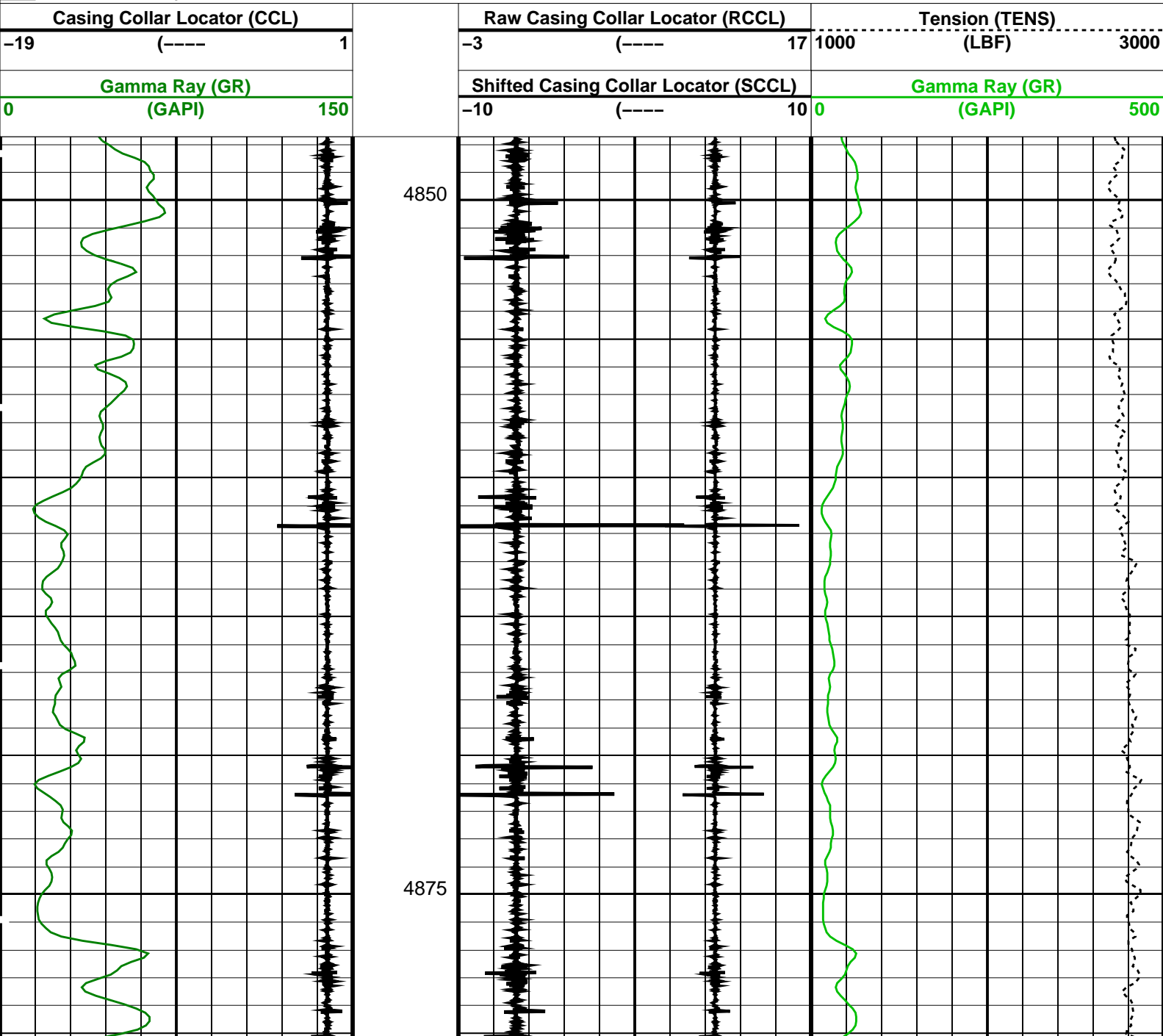
17C0-154

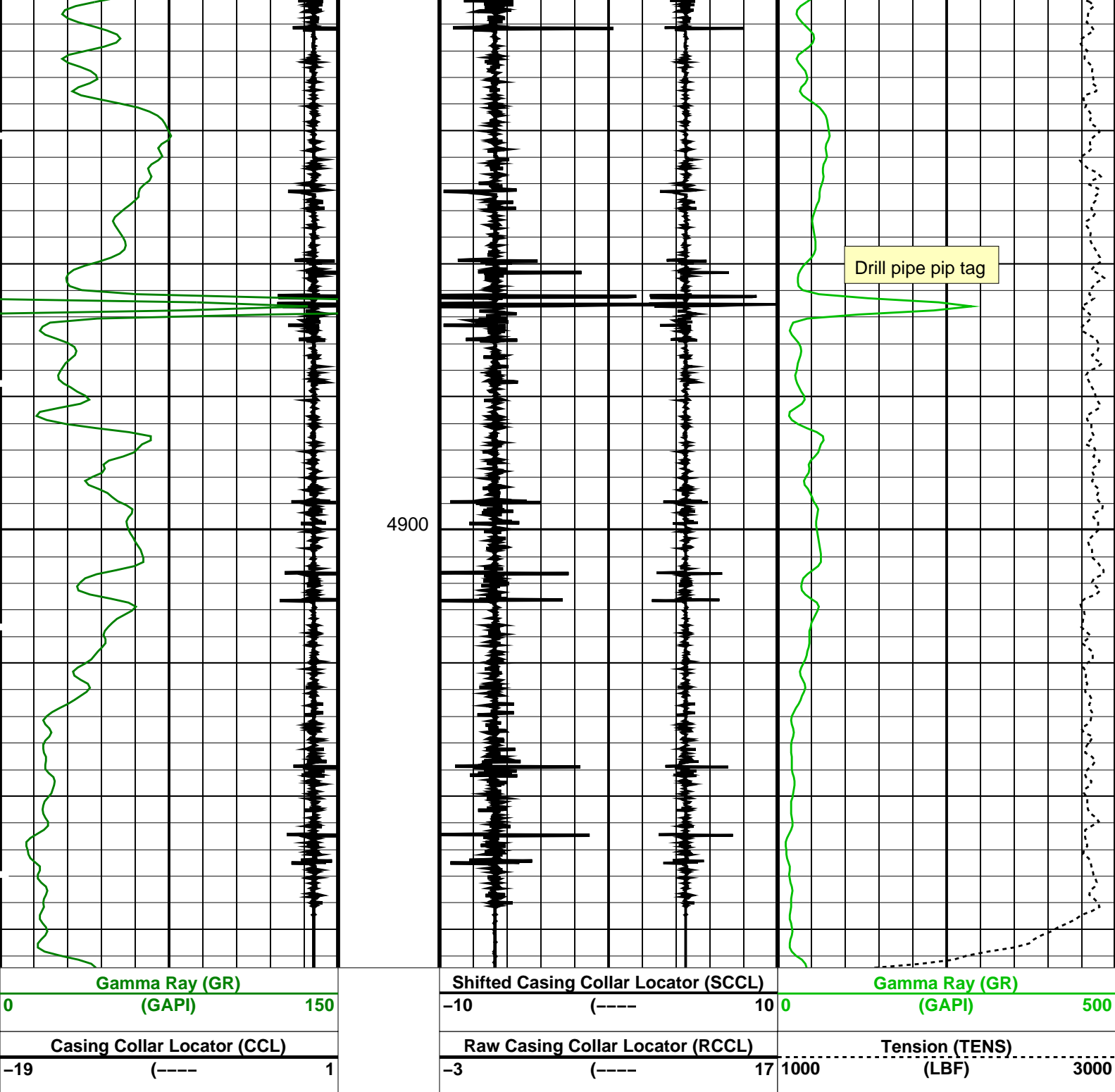
PGGT-CC

17C0-154

PIP SUMMARY

Time Mark Every 60 S





PIP SUMMARY

Time Mark Every 60 S

Format: CCLLog Vertical Scale: 1:200

Graphics File Created: 03-Jul-2010 17:22

OP System Version: 17C0-154

SHM_GUN 17C0-154

PGGT-CC

17C0-154

Output DLIS Files

DEFAULT PERFO_028LUP

FN:34

PRODUCER

03-Jul-2010 17:22

Company: Esso Australia Pty Ltd.

Schlumberger

Well: SNAPPER A28

Well: **SNAPPER A28**
Field: **Snapper**
Rig: **RIG 175**
Country: **Australia**

GR-CCL
MaxR Correlation
3-Jul-2010