

Company: Esso Australia Pty Ltd

Well: WEST KINGFISH W9A

Field: WEST KINGFISH

Rig: Rig 175

Country: Australia

Junk Basket with 6" Gauge Ring
PBMS – Temperature log
3–Jan–2010

Rig: Rig 175	
Field: WEST KINGFISH	
Location: Bass Strait	
Well: WEST KINGFISH W9A	
Company: Esso Australia Pty Ltd	
LOCATION	
Bass Strait Gippsland	Elev.: K.B. 41.70 m G.L. -77.00 m D.F. 41.73 m
Permanent Datum: _____ Log Measured From: _____ Drilling Measured From: _____	MSL _____ Drill Floor _____ Drill Floor _____ Elev.: 0.00 m 41.73 m above Perm. Datum
State: Victoria	Max. Well Deviation 57 deg Longitude 148°6'19.93423"E Latitude 38° 35' 34.84865" S

Logging Date	4-Jan-2010		
Run Number	One		
Depth Driller	3703 m		
Schlumberger Depth	3672.5 m		
Bottom Log Interval	3672.5 m		
Top Log Interval	20 m		
Casing Fluid Type	Brine		
Salinity			
Density	8.55 g/cm3		
Fluid Level	0 m		
BIT/CASING/TUBING STRING			
Bit Size	8.500 in		
From	923.1 m		
To	3703 m		
Casing/Tubing Size	7.000 in		
Weight	26 lbm/ft		
Grade	L-80		
From	20.3 m		
To	3703 m		
Maximum Recorded Temperatures	211 degF		
Logger On Bottom	4-Jan-2010		8:18
Unit Number	3829	AUSL	
Recorded By	M. Pratt, J. Hollingworth		
Witnessed By	M. Cullicut, D. Daniels		

PVT DATA			
Oil Density	Run 1	Run 2	R
Water Salinity			
Gas Gravity			
Bo			
Bw			
1/Bg			
Bubble Point Pressure			
Bubble Point Temperature			
Solution GOR			
Maximum Deviation	57 deg		
CEMENTING DATA			
Primary/Squeeze	Primary		
Casing String No			
Lead Cement Type			
Volume			
Density			
Water Loss			
Additives			
Tail Cement Type			
Volume			
Density			
Water Loss			
Additives			
Expected Cement Top			
Logging Date			
Run Number			
Depth Driller			
Schlumberger Depth			
Bottom Log Interval			
Top Log Interval			
Casing Fluid Type			
Salinity			
Density			
Fluid Level			
BIT/CASING/TUBING STRING			
Bit Size			
From			
To			
Casing/Tubing Size			
Weight			
Grade			
From			
To			
Maximum Recorded Temperatures			
Logger On Bottom			
Unit Number			
Recorded By			
Witnessed By			

DEPTH SUMMARY LISTING

Date Created: 4-JAN-2010 18:02:26

Depth System Equipment

Depth Measuring Device		Tension Device		Logging Cable	
Type:	IDW-E	Type:	CMTD-B/A	Type:	7-46ZV XS
Serial Number:	1173	Serial Number:	1173	Serial Number:	708145
Calibration Date:	09-SEP-2009	Calibration Date:	03-JAN-2010	Length:	6650 M
Calibrator Serial Number:	300286	Calibrator Serial Number:	300286	Conveyance Method: Wireline Rig Type: Offshore Fixed	
Calibration Cable Type:	7-46ZV XS	Number of Calibration Points:	10		
Wheel Correction 1:	-4	Calibration RMS:	14		
Wheel Correction 2:	-1	Calibration Peak Error:	26		

Depth Control Parameters

Log Sequence:	Subsequent Log In the Well
Reference Log Name:	WKF_W9A_200MD-RM_LOG_ VISION_ Service_ FIELD PRINT. PNG
Reference Log Run Number:	ID14_OC_26
Reference Log Date:	02-JAN-2009

Depth Control Remarks

1. IDW used as primary depth control
2. First log in well. Schlumberger depth control procedures applied.
3. All logs zeroed at drill floor.
4. Log correlated to PNG Log provided by the client EXXON Mobil.
- 5.
- 6.

DISCLAIMER

THE USE OF AND RELIANCE UPON THIS RECORDED-DATA BY THE HEREIN NAMED COMPANY (AND ANY OF ITS AFFILIATES, PARTNERS, REPRESENTATIVES, AGENTS, CONSULTANTS AND EMPLOYEES) IS SUBJECT TO THE TERMS AND CONDITIONS AGREED UPON BETWEEN SCHLUMBERGER AND THE COMPANY, INCLUDING: (a) RESTRICTIONS ON USE OF THE RECORDED-DATA; (b) DISCLAIMERS AND WAIVERS OF WARRANTIES AND REPRESENTATIONS REGARDING COMPANY'S USE OF AND RELIANCE UPON THE RECORDED-DATA; AND (c) CUSTOMER'S FULL AND SOLE RESPONSIBILITY FOR ANY INFERENCE DRAWN OR DECISION MADE IN CONNECTION WITH THE USE OF THIS RECORDED-DATA.

OTHER SERVICES1

OS1: MaxR

OS2:

OS3:

OS4:

OS5:

REMARKS: RUN NUMBER 1

Log correlated to PNG log provided by client EXXON Mobil.

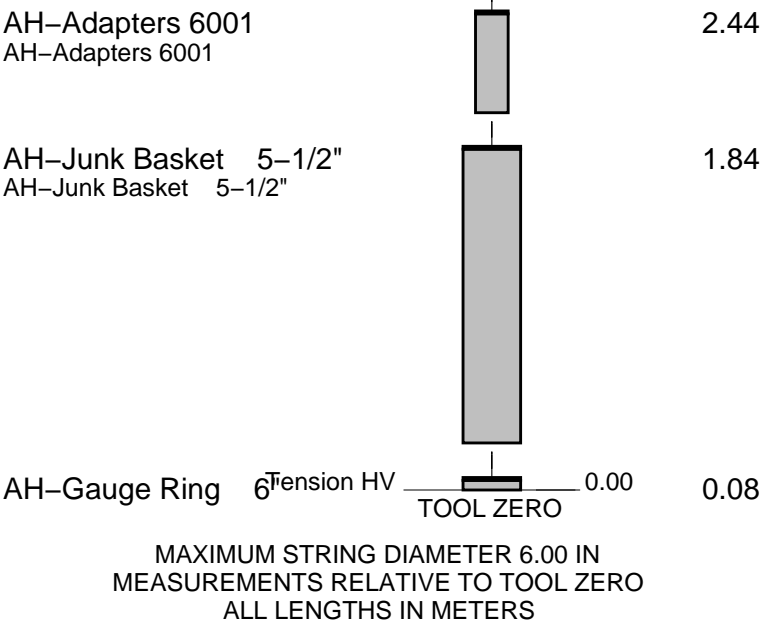
Objective:RIH with Junk Basket & 6" Guage ring and PBMS confirm access for MaxR

assembly and record temperature log from HUDm MDRT to surface.

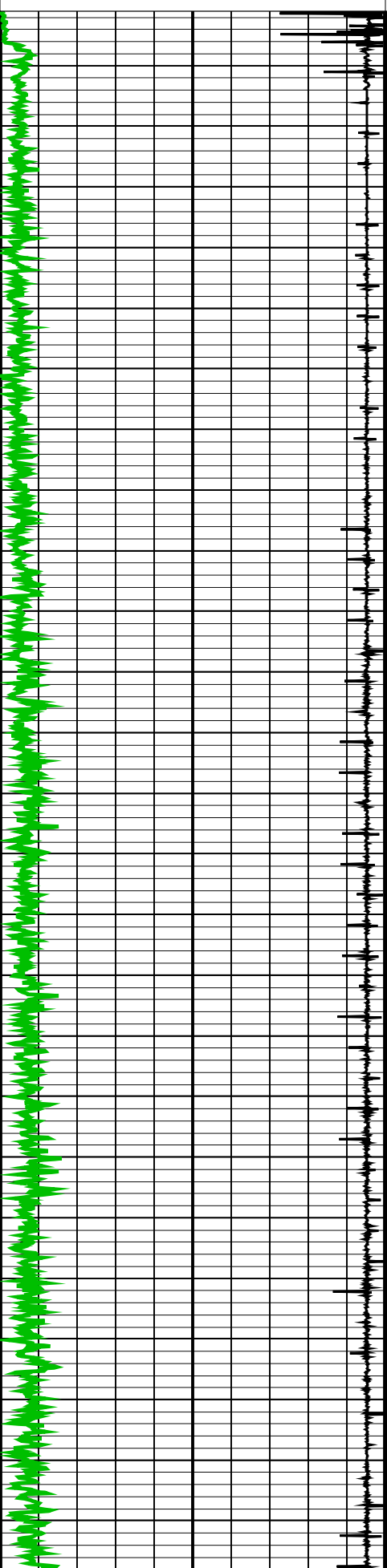
RIH with the MaxR, HSD perforating gun assembly, PGGT – D, correlate

and set Maxr assembly with the Top shot tob 3565.5m – 3567.0m MDRT, POOH.

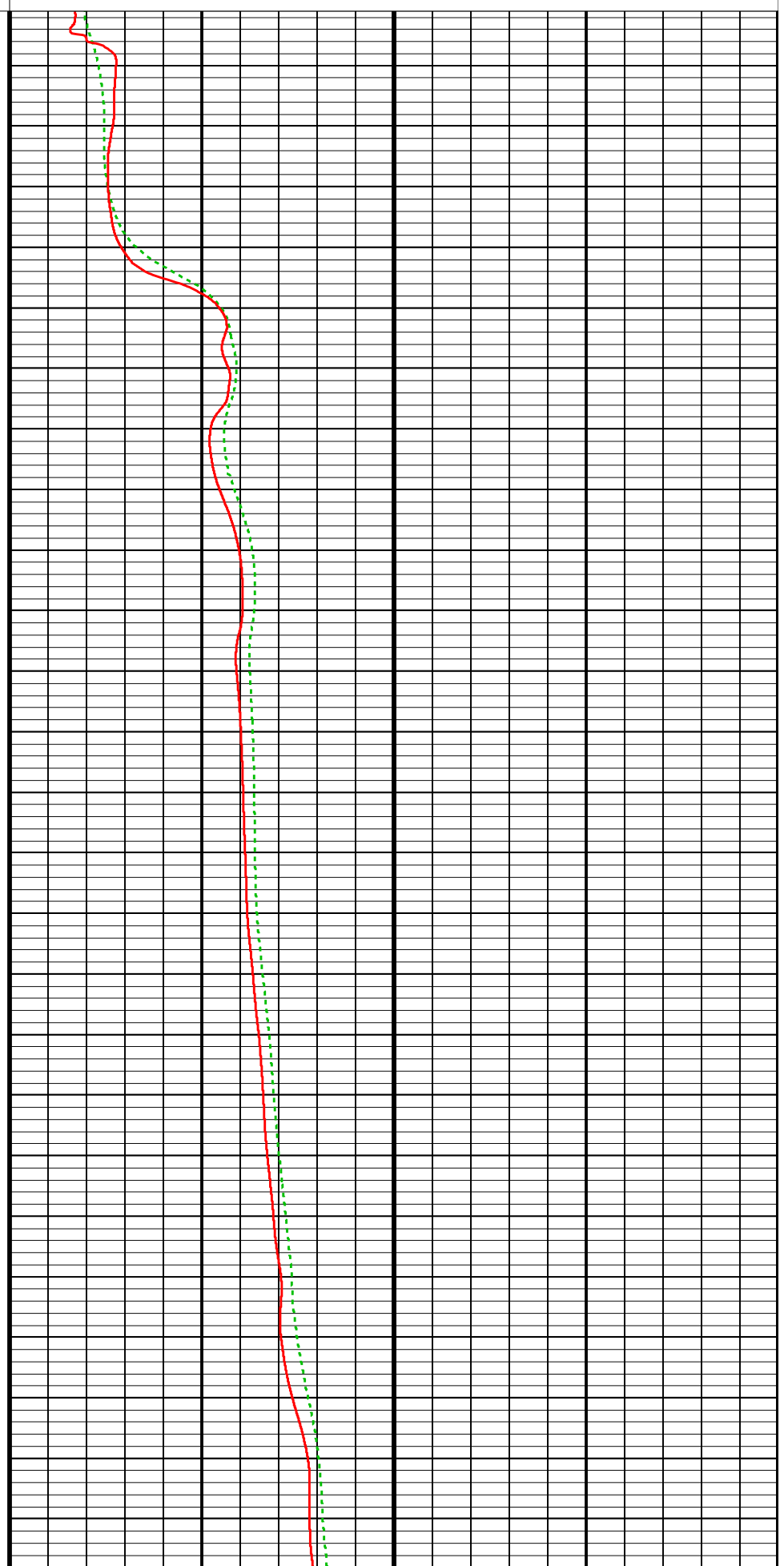
HUD tagged @ 3672.5 m MDKB with Junk Basket

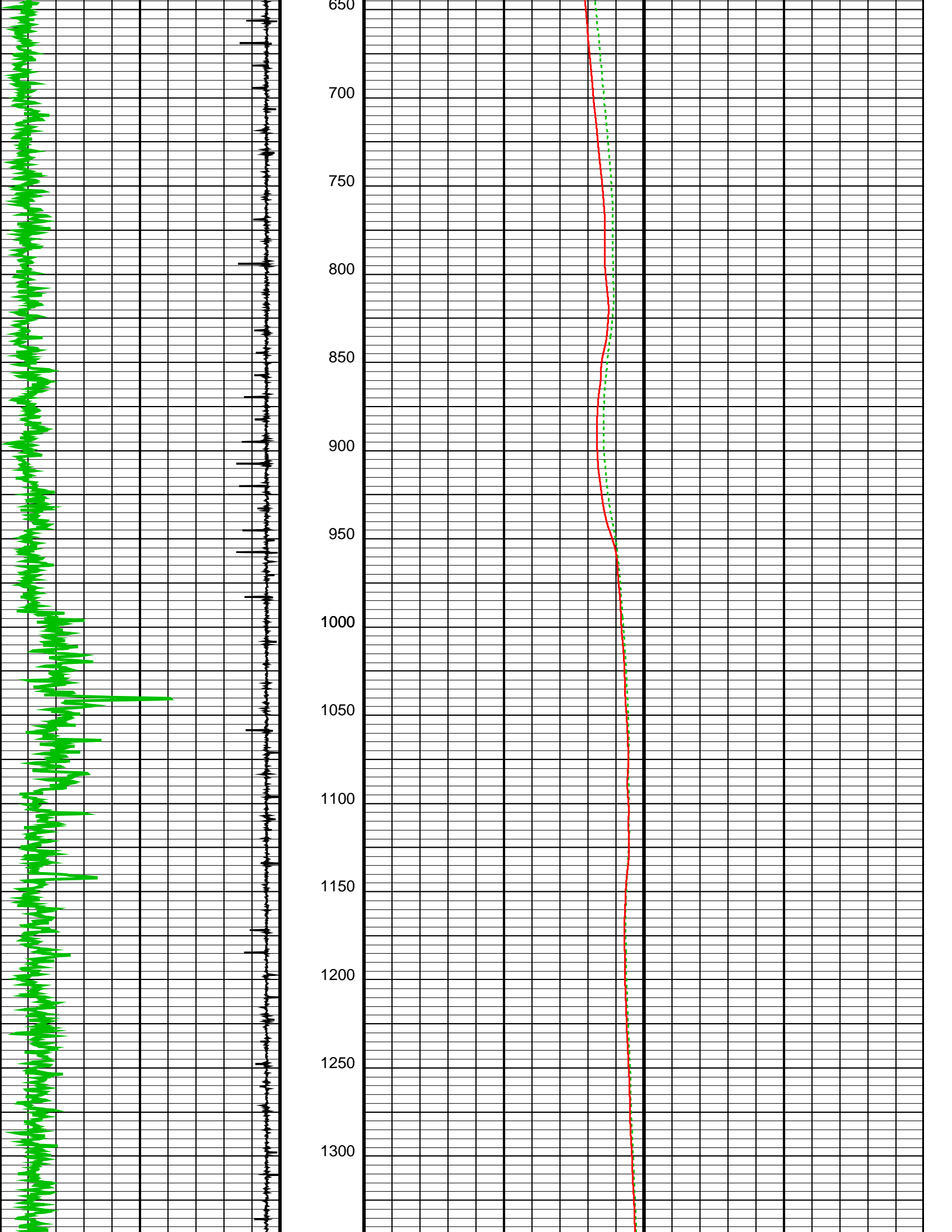
[illegible]

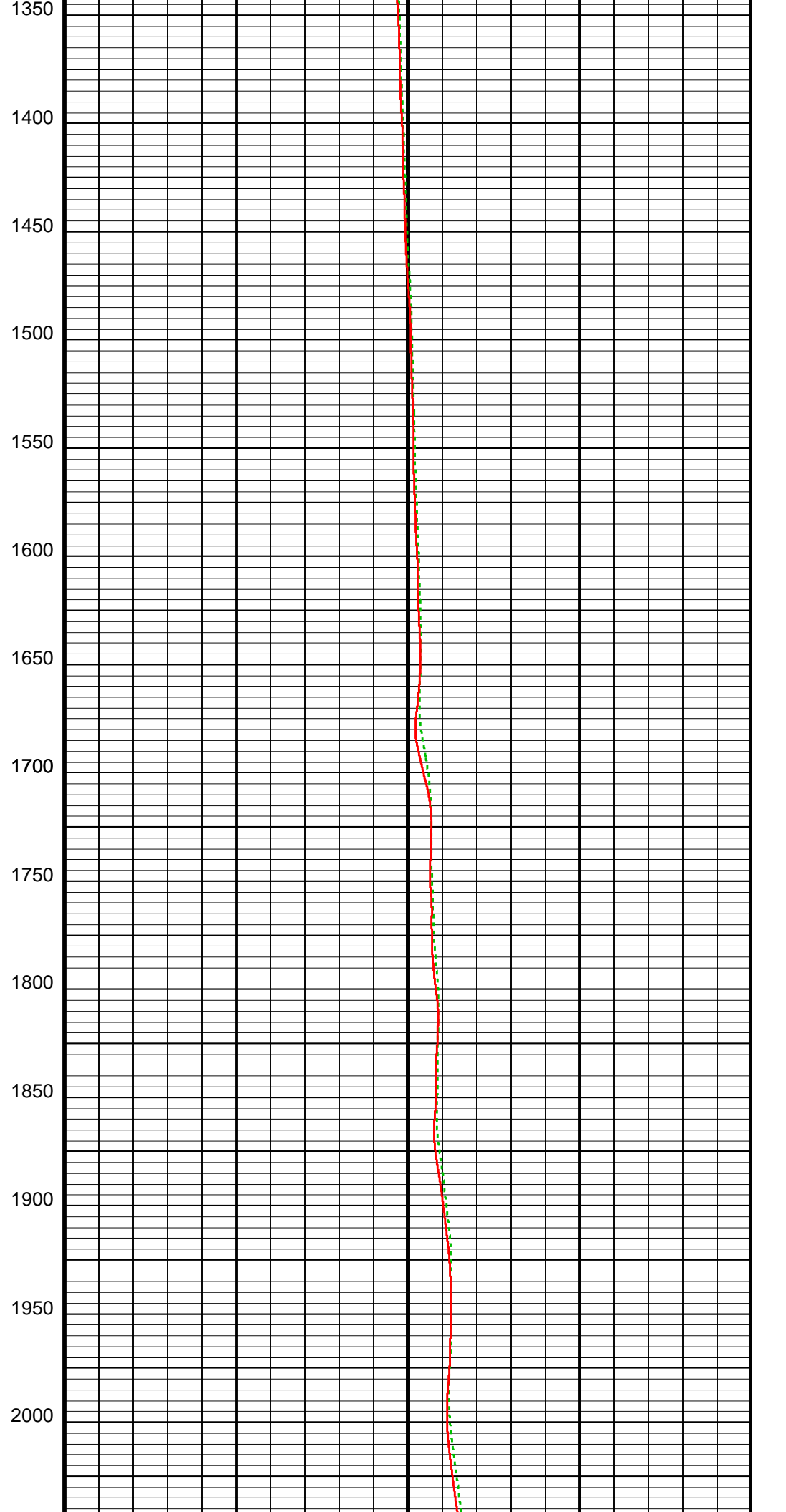
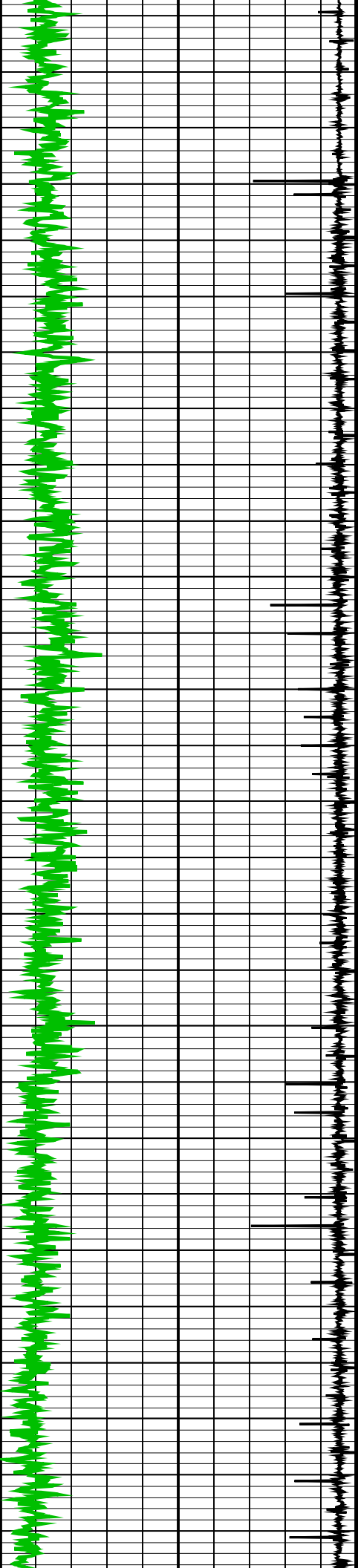
Gamma-Ray [01] (P01LGR)
(GAPI) 0 150
CCL [02] (P02CCL)
(V) -19 1

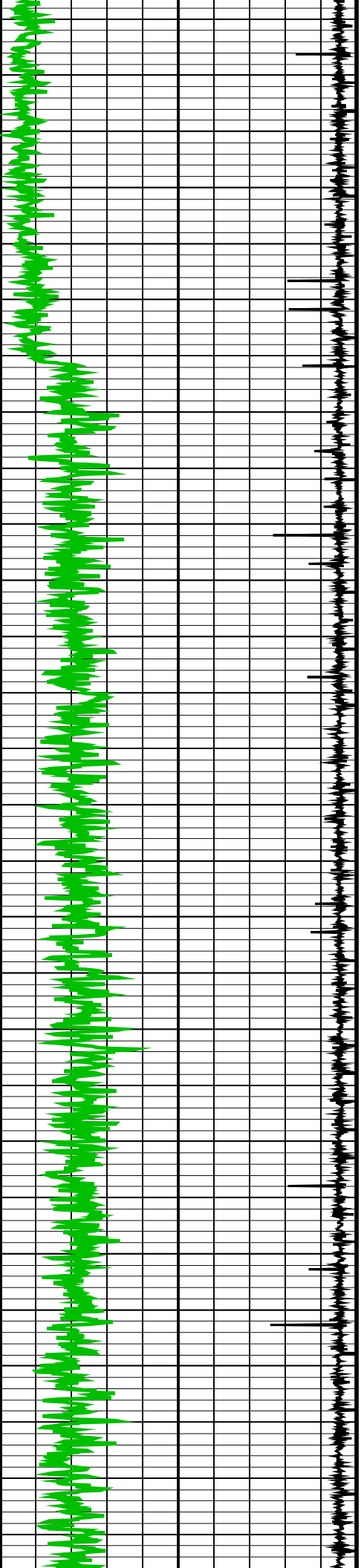


Down Log Temperature (P01TMP)
(DEGF) 50 250
Up Log Temperature (P02TMP)
(DEGF) 50 250

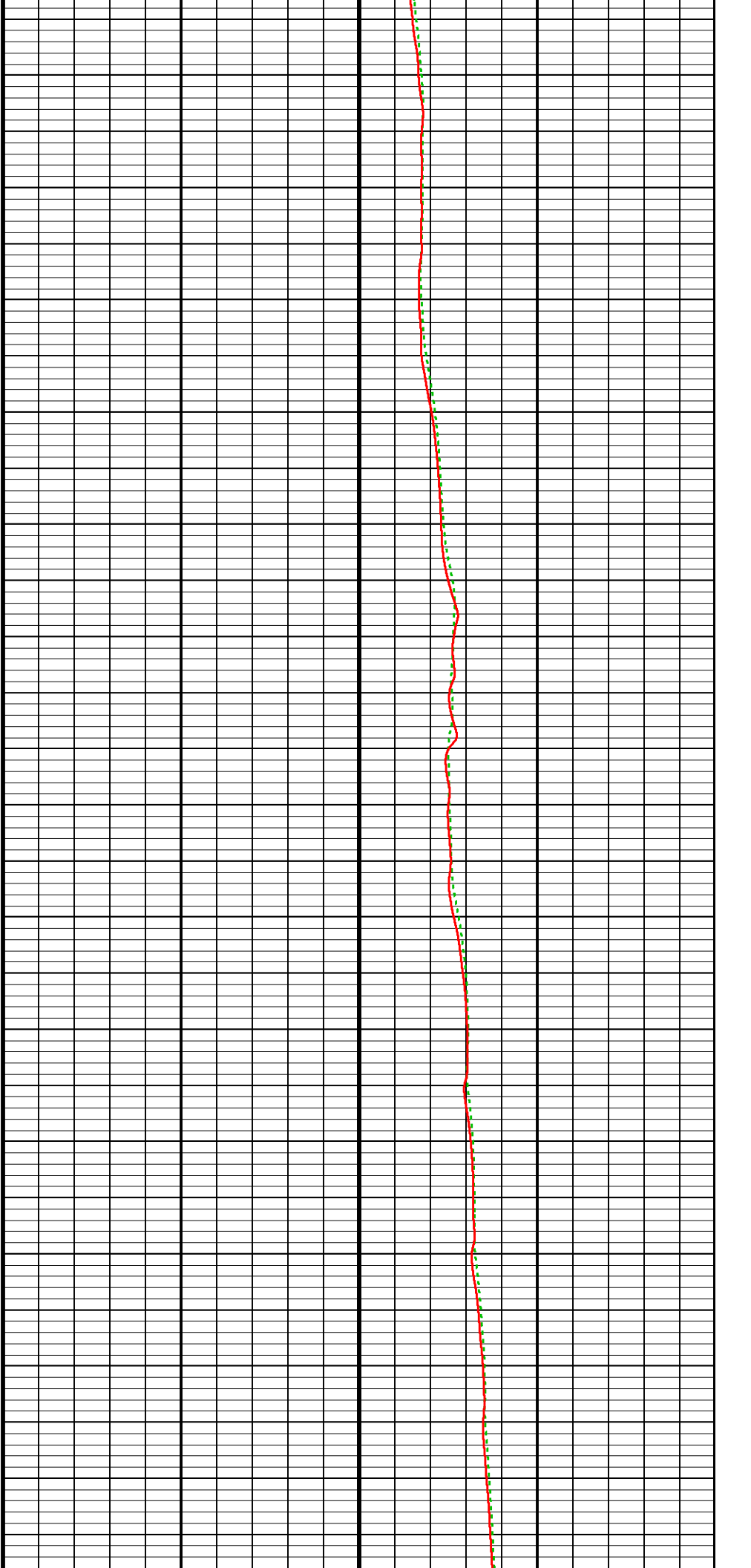


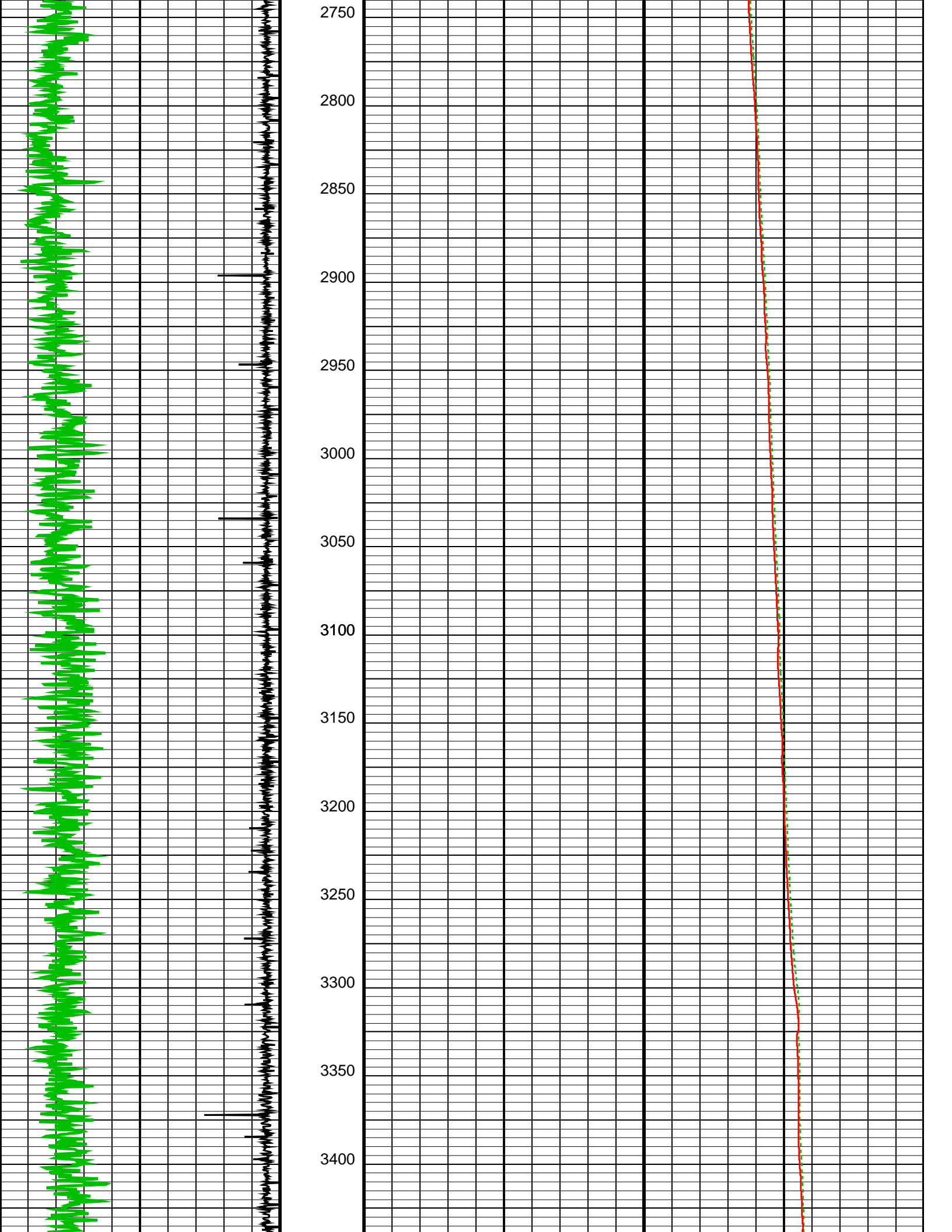


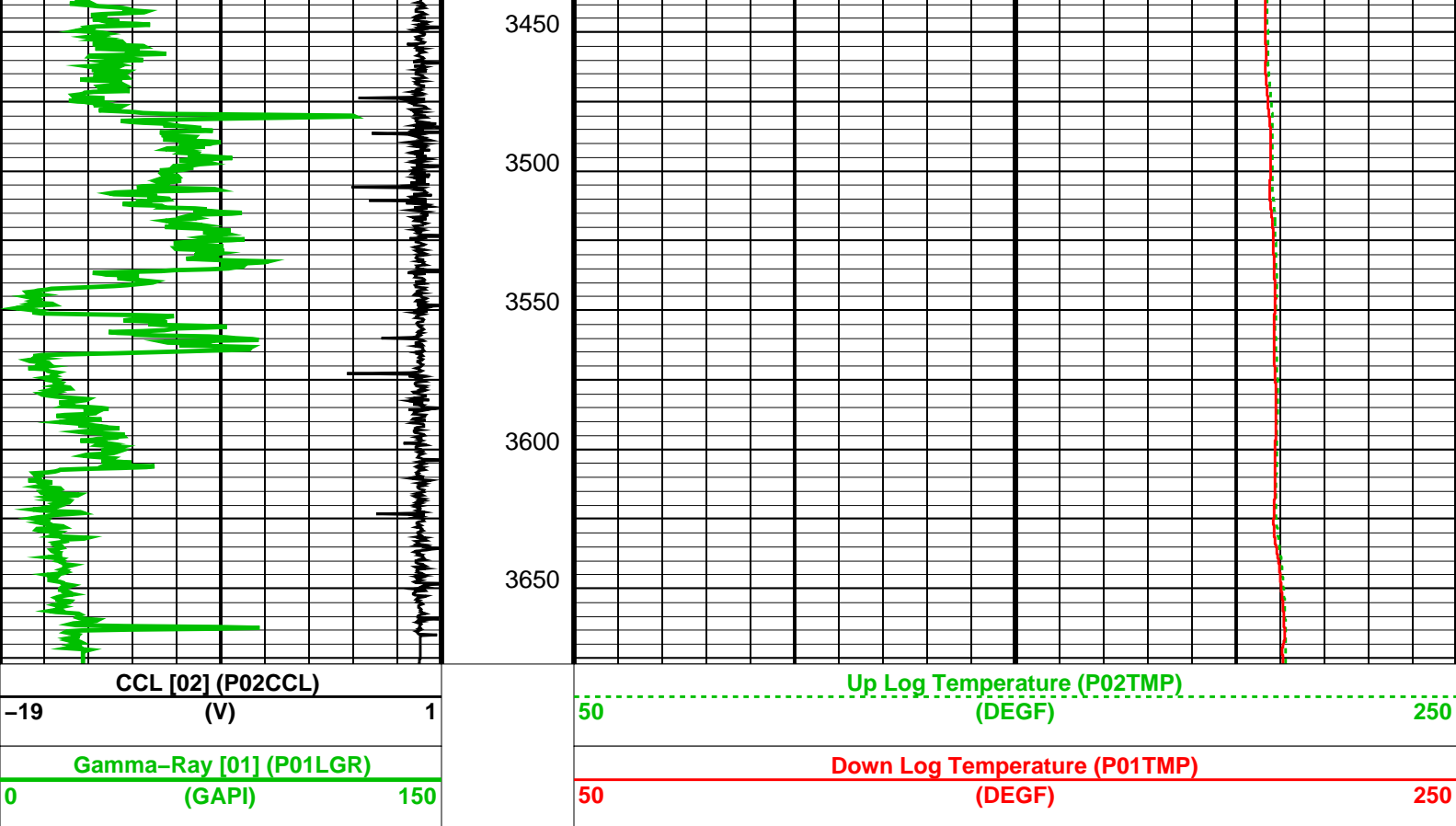




2050
2100
2150
2200
2250
2300
2350
2400
2450
2500
2550
2600
2650
2700







Parameters		
DLIS Name	Description	Value
CSID	PSPT-A 1-11/16": Production Services Logging Platform	7 IN
CCLS	PLQL: Production Logging Quick Look	CCLC
FCHD	CCL Selector	PARAMETER
PCVS	Cased Hole Diameter Selector	CVEL
PGRS	CVEL Selector	GR
PGS	GR Selector	WPRE
PWHS	Pressure Gauge Selector	NONE
RHOS	PLQL Water HoldUp Selector	WFDE
SPIS	Fluid Density Selector	SPIN
TMPS	Spinner Selector	WTEP
	Temperature Selector	
	System and Miscellaneous	
DO	Depth Offset for Playback	-5.7 M
PP	Playback Processing	NORMAL

Format: PLQLMultipasses Vertical Scale: 1:2500 Graphics File Created: 04-Jan-2010 16:12

OP System Version: 17C0-154

PSPT-A 1-11/16"

Output DLIS Files		
DEFAULT	PSP_065PUP	FN:69 PRODUCER 04-Jan-2010 16:12



Junk Basket & 6" Gauge Ring
Correlation Pass

Input DLIS Files

DEFAULT PSP_037LUP FN:41 PRODUCER 04-Jan-2010 08:26 3683.1 M 7.8 M

Output DLIS Files

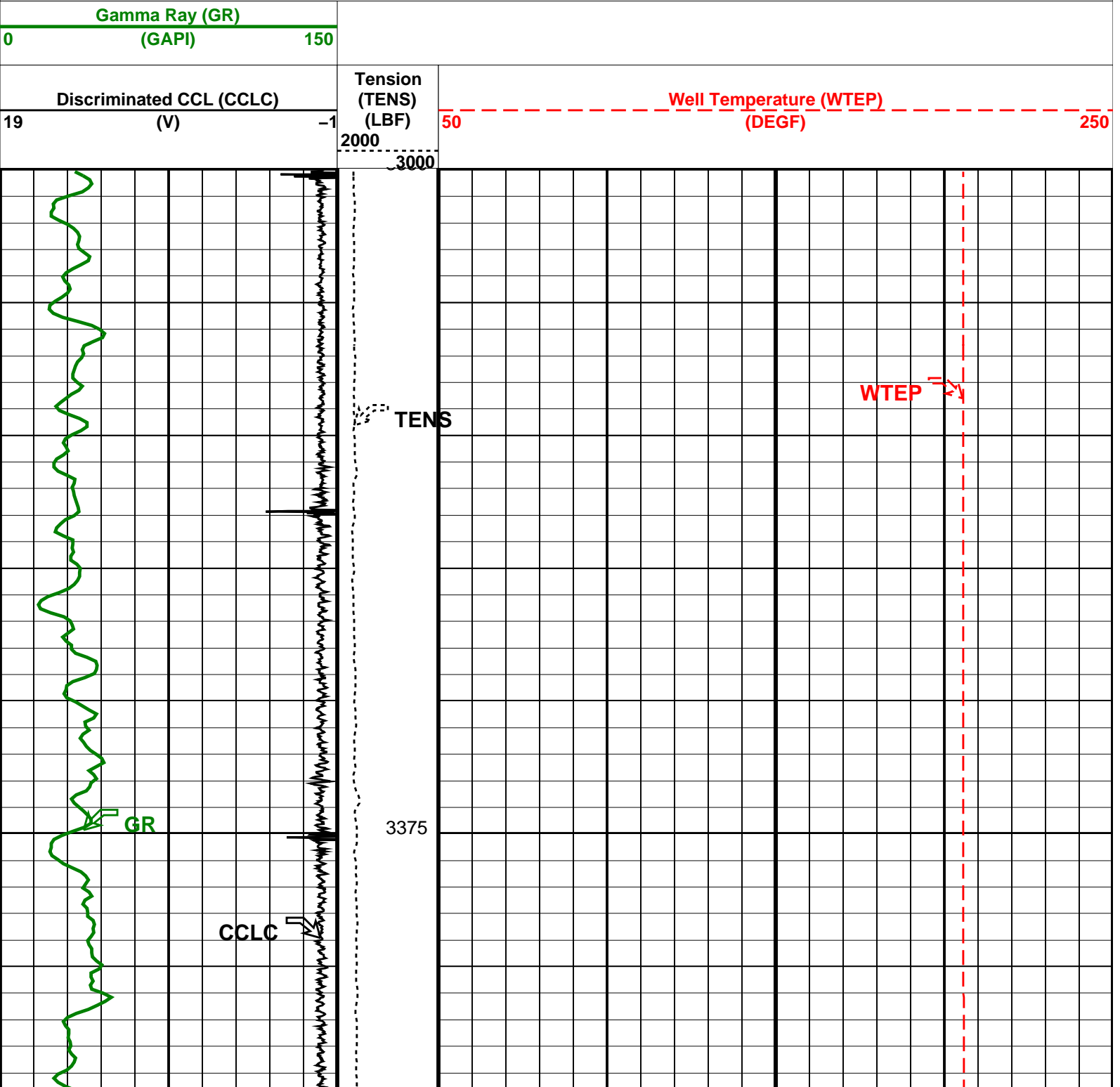
DEFAULT PSP_042PUP FN:46 PRODUCER 04-Jan-2010 10:49 3680.3 M 3349.9 M

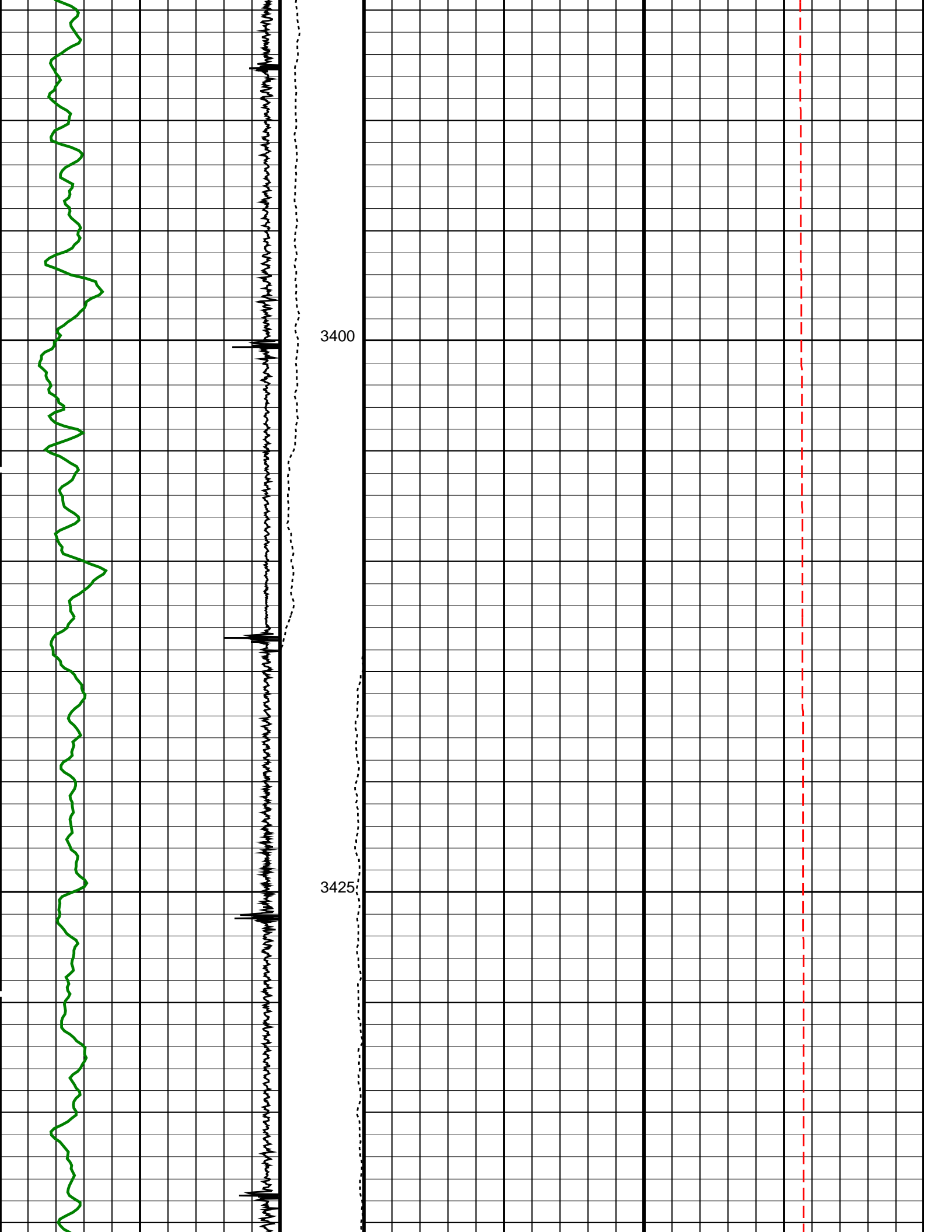
OP System Version: 17C0-154

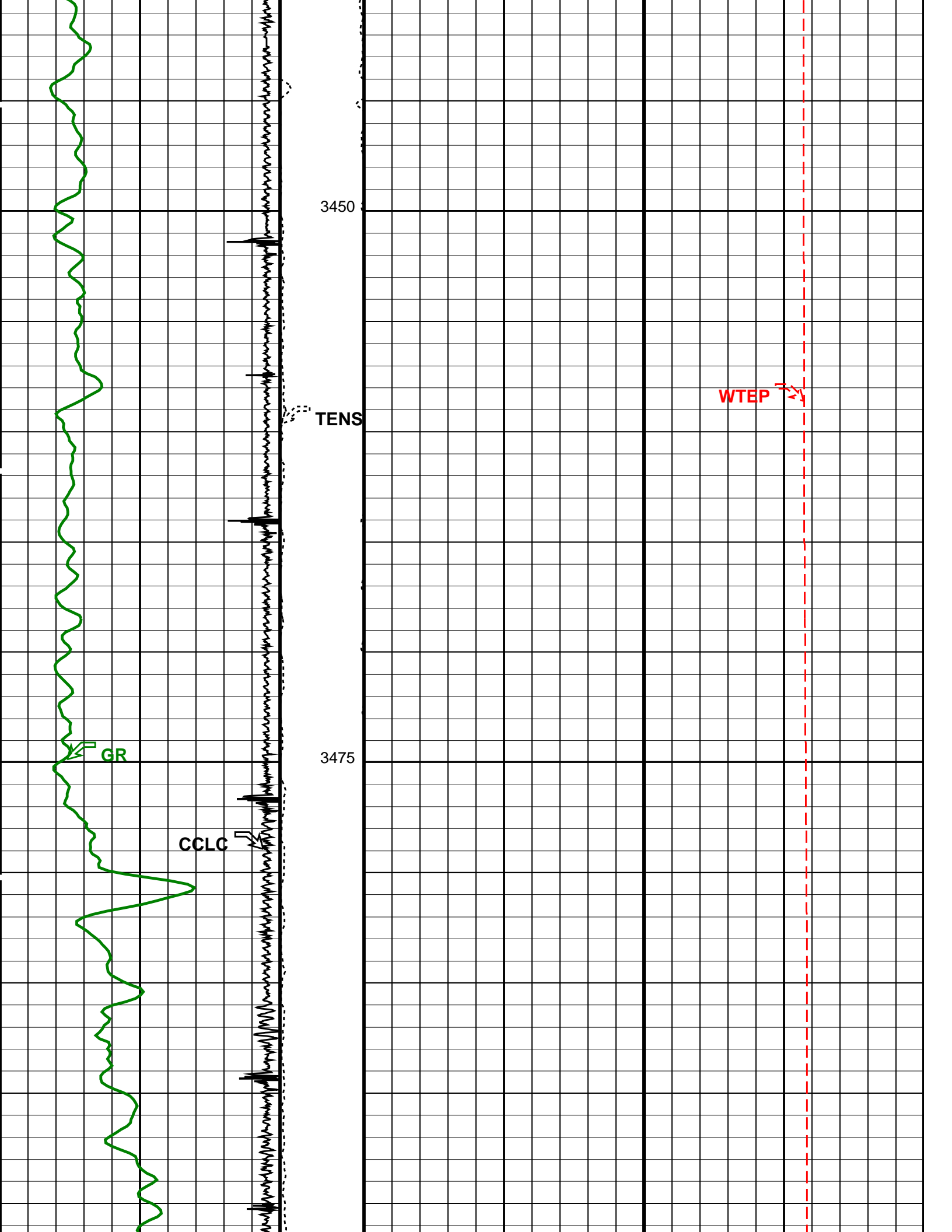
PSPT-A 1-11/16"

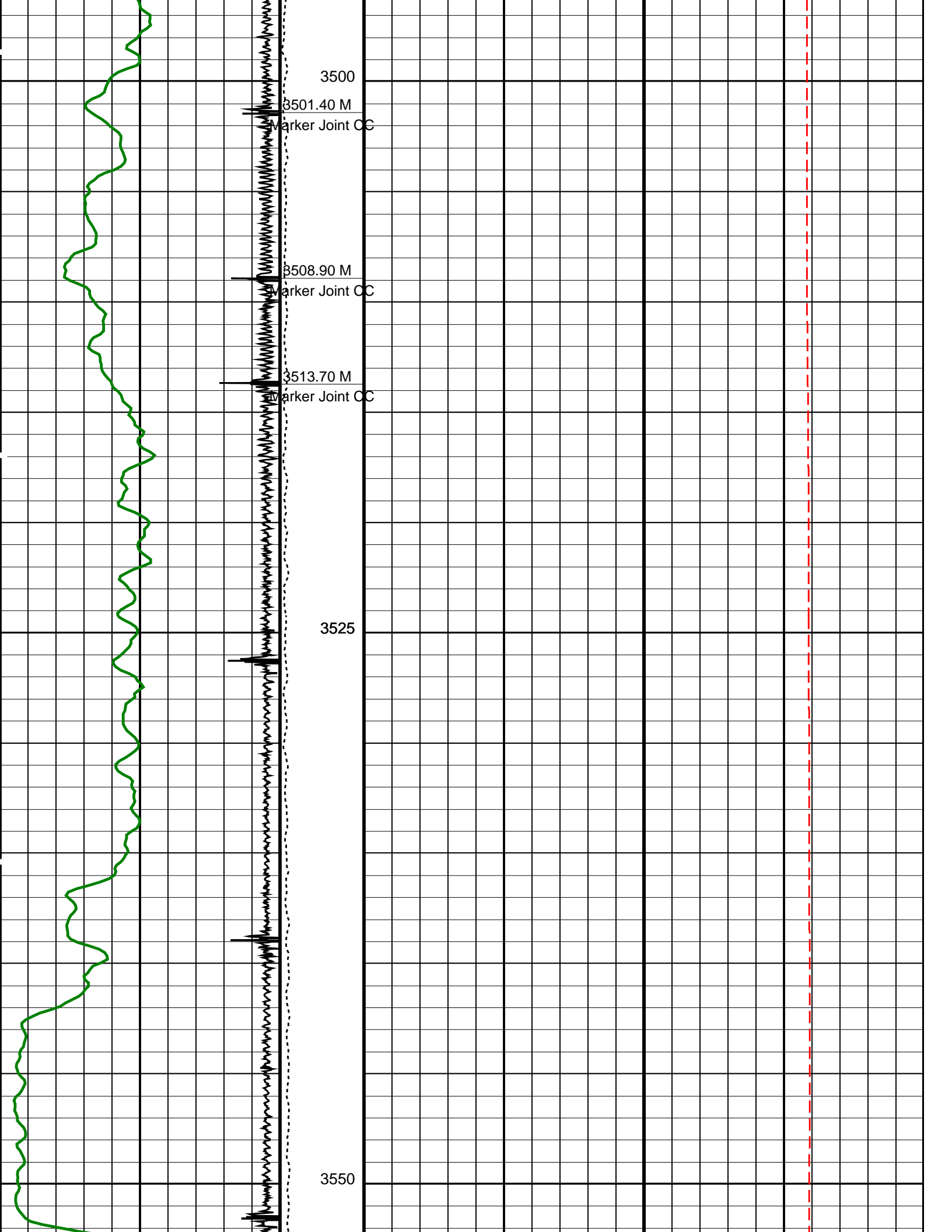
PIP SUMMARY

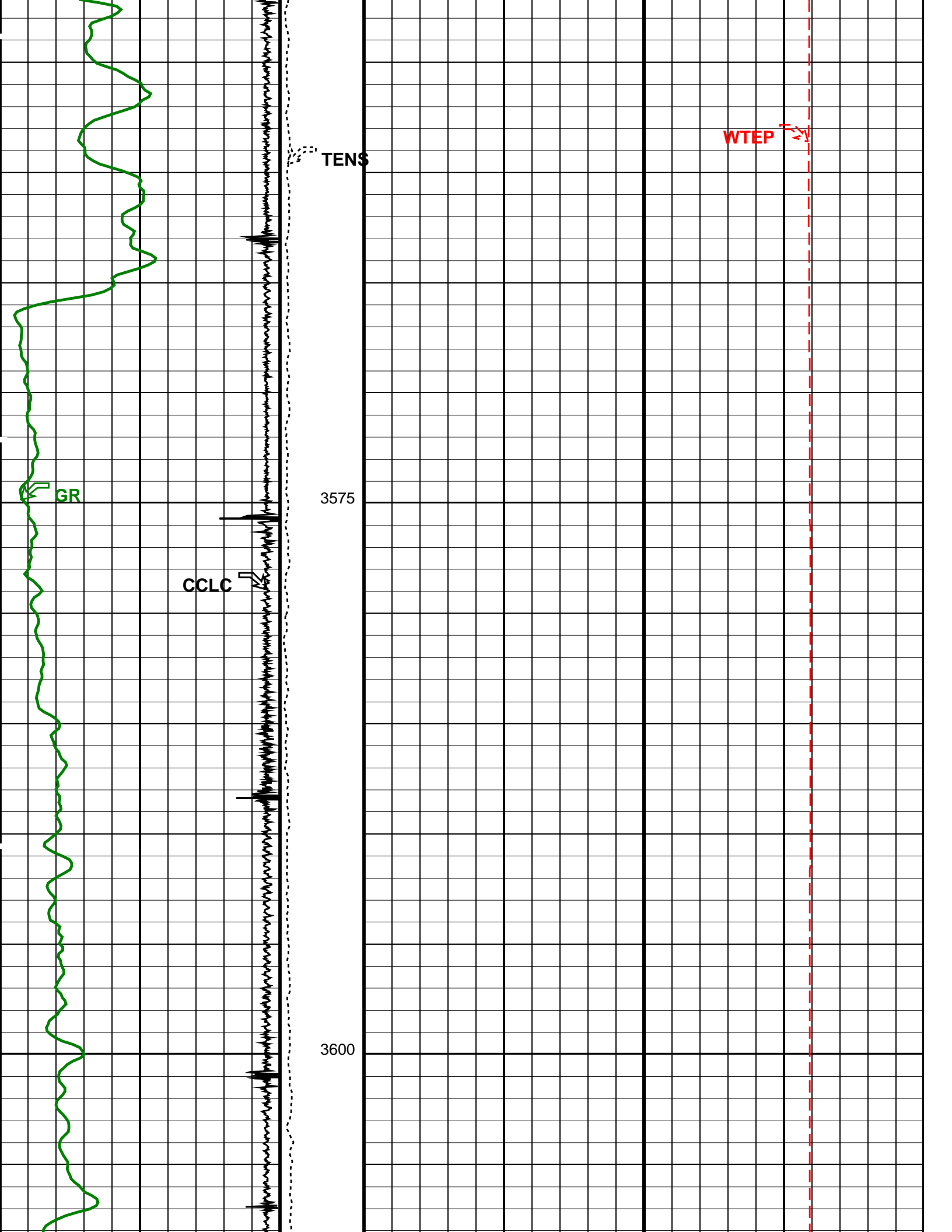
Time Mark Every 60 S

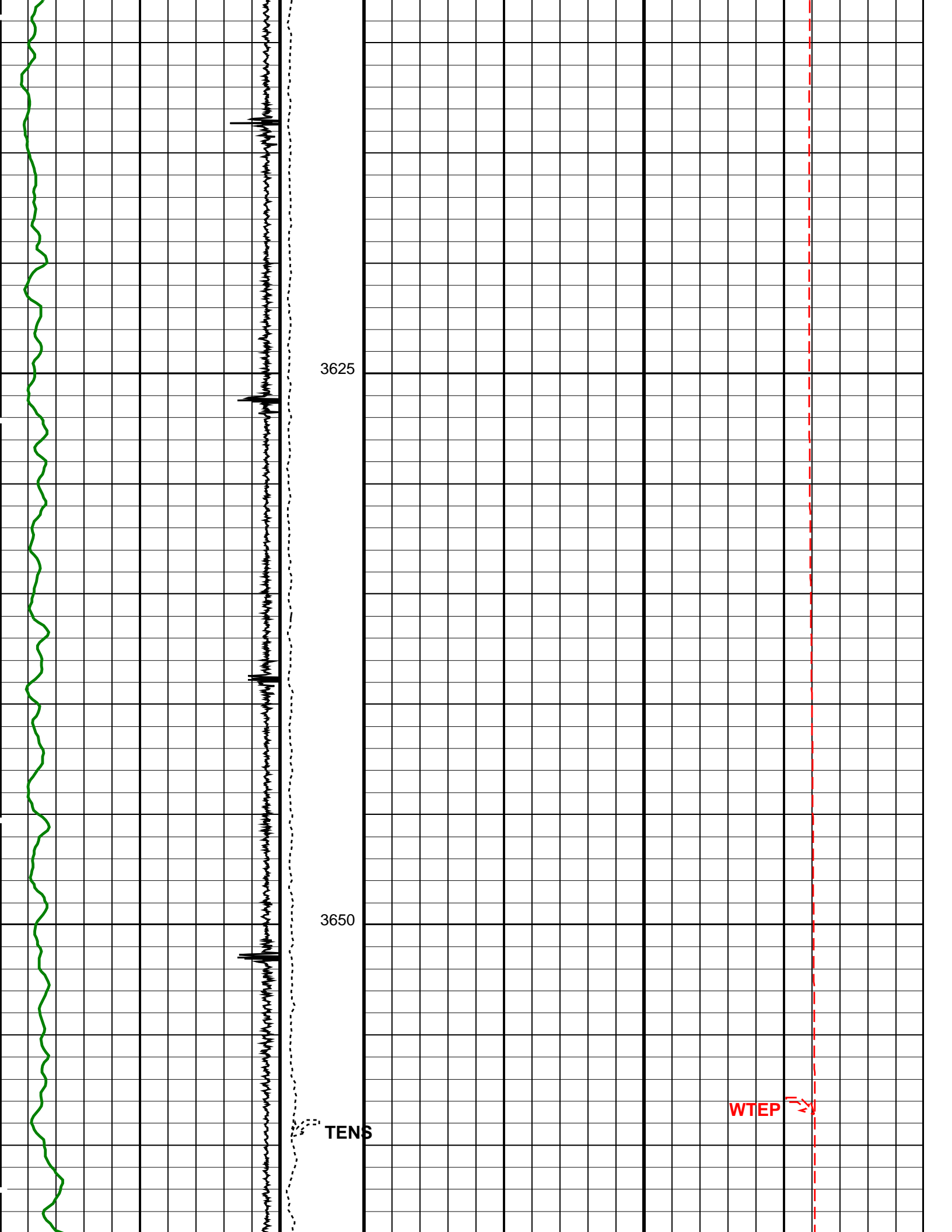


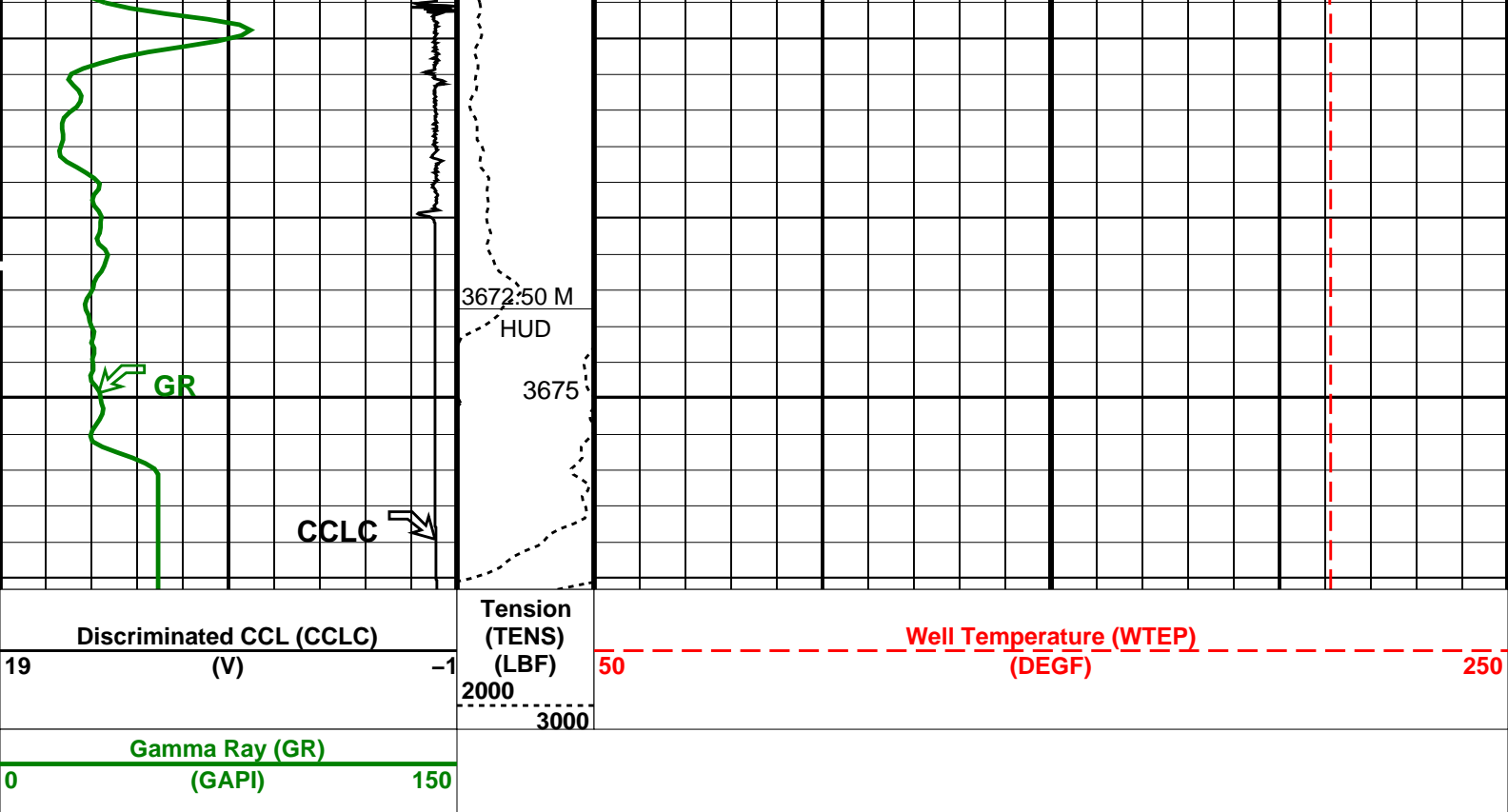












PIP SUMMARY

Time Mark Every 60 S

Format: PSP_1 Vertical Scale: 1:200

Graphics File Created: 04-Jan-2010 10:49

OP System Version: 17C0-154

PSPT-A 1-11/16"

Parameters

DLIS Name	Description	Value
DO	System and Miscellaneous	
PP	Depth Offset for Playback	-2.7 M
	Playback Processing	NORMAL

Input DLIS Files

DEFAULT	PSP_037LUP	FN:41	PRODUCER	04-Jan-2010 08:26	3683.1 M	7.8 M
---------	------------	-------	----------	-------------------	----------	-------

Output DLIS Files

DEFAULT	PSP_042PUP	FN:46	PRODUCER	04-Jan-2010 10:49
---------	------------	-------	----------	-------------------

Company: **Esso Australia Pty Ltd**

Schlumberger

Well: **WEST KINGFISH W9A**

Field: **WEST KINGFISH**

Rig: **Rig 175**

Country: **Australia**

Junk Basket with 6" Gauge Ring
PBMS – Temperature log
3-Jan-2010