

Company: **Esso Australia Pty Ltd.**

Well: **FORTESCUE F16A**

Field: **Fortescue**

Rig: **Prod 2** Country: **Australia**

Prod 2 Fortescue Bass Strait FORTESCUE F16A Esso Australia Pty Ltd.	2" PJO HSD Perforation Record 28-May-2010			
	LOCATION	Bass Strait		Elev.: K.B. 34.50 m G.L. 69.00 m D.F. 34.50 m
		Permanent Datum: Mean Sea Level		Elev.: 0.00 m
		Log Measured From: Drill Floor		34.50 m above Perm. Datum
		Drilling Measured From: Drill Floor		
	Scale: 1:200	Max. Well Deviation 77.3 deg		Longitude 148°16'41.067"E Latitude 38°24'25.603"S

PVT DATA	Oil Density	Run 1	Run 2	Run 3
	Water Salinity			
	Gas Gravity			
	Bo			
	Bw			
	1/Bg			
	Bubble Point Pressure			
	Bubble Point Temperature			
	Solution GOR			
	Maximum Deviation	77.3 deg		
CEMENTING DATA				
	Primary/Squeeze	Primary		
	Casing String No			
	Lead Cement Type			
	Volume			
	Density			
	Water Loss			
	Additives			
	Tail Cement Type			
	Volume			
	Density			
	Water Loss			
	Additives			
	Expected Cement Top			

Logging Date	28-May-2010	
Run Number	1	
Depth Driller	5000 m	
Schlumberger Depth	4805 m	
Bottom Log Interval	4783 m	
Top Log Interval	4778 m	
Casing Fluid Type	Brine / Radia green	
Salinity		
Density		
Fluid Level		
BIT/CASING/TUBING STRING		
Bit Size	8.500 in	
From	4699.55 m	
To	5000 m	
Casing/Tubing Size	5.500 in	
Weight	17 lbm/ft	
Grade	L-80	
From	4538.4 m	
To	4984 m	
Maximum Recorded Temperatures	225 degF	
Logger On Bottom	28-May-2010	10:00
Unit Number	3827	AUSL
Recorded By	O.Darby / C.Rowand	
Witnessed By	D.Broomsfield / G.Rimmer	

Logging Date		
Run Number		
Depth Driller		
Schlumberger Depth		
Bottom Log Interval		
Top Log Interval		
Casing Fluid Type		
Salinity		
Density		
Fluid Level		
BIT/CASING/TUBING STRING		
Bit Size		
From		
To		
Casing/Tubing Size		
Weight		
Grade		
From		
To		
Maximum Recorded Temperatures		
Logger On Bottom		
Unit Number		
Recorded By		
Witnessed By		

DEPTH SUMMARY LISTING

Date Created: 30-MAY-2010 12:18:32

Depth System Equipment

Depth Measuring Device		Tension Device		Logging Cable	
Type:	IDW-H	Type:	CMTD-B/A	Type:	2-32ZT
Serial Number:	797	Serial Number:	1711	Serial Number:	207309
Calibration Date:	1-Mar-2010	Calibration Date:	22-May-2010	Length:	6184 M
Calibrator Serial Number:	30	Calibrator Serial Number:	1167	Conveyance Method:	Wireline
Calibration Cable Type:	2-32ZT	Number of Calibration Points:	10	Rig Type:	Offshore Fixed
Wheel Correction 1:	0	Calibration RMS:	16		
Wheel Correction 2:	-2	Calibration Peak Error:	391		

Depth Control Parameters

Log Sequence:	Subsequent Trip To the Well
Reference Log Name:	Solar Composite Log
Reference Log Run Number:	
Reference Log Date:	
Subsequent Trip Down Log Correction:	5.00 M

Depth Control Remarks

1. Log correlated to client provided Solar Composite Log
2. Rigged up on ISS CWU using the platform crane
3. Tool Zero referenced to the well schematic Tubing Hanger depth
- 4.
- 5.
6. Tension Calibration: $A=1.012E-5$, $B=0.954$ & $C=-213.1$

DISCLAIMER

THE USE OF AND RELIANCE UPON THIS RECORDED-DATA BY THE HEREIN NAMED COMPANY (AND ANY OF ITS AFFILIATES, PARTNERS, REPRESENTATIVES, AGENTS, CONSULTANTS AND EMPLOYEES) IS SUBJECT TO THE TERMS AND CONDITIONS AGREED UPON BETWEEN SCHLUMBERGER AND THE COMPANY, INCLUDING: (a) RESTRICTIONS ON USE OF THE RECORDED-DATA; (b) DISCLAIMERS AND WAIVERS OF WARRANTIES AND REPRESENTATIONS REGARDING COMPANY'S USE OF AND RELIANCE UPON THE RECORDED-DATA; AND (c) CUSTOMER'S FULL AND SOLE RESPONSIBILITY FOR ANY INFERENCE DRAWN OR DECISION MADE IN CONNECTION WITH THE USE OF THIS RECORDED-DATA.

OTHER SERVICES1	OTHER SERVICES2
OS1: WPP (WPRE-WTEP)	OS1:
OS2: GR-CCL	OS2:
OS3:	OS3:
OS4:	OS4:
OS5:	OS5:

REMARKS: RUN NUMBER 1

REMARKS: RUN NUMBER 2

Correlated to ExxonMobil FORTESCUE A16A log provided by client

Objective:

Prepare 5m of 2" HSD gun loaded with Powerjet Omega charges, 6spf 60deg phasing.

Rig up wireline make up toolstring GR/CCL/WPRE/WTEP – attach 2" HSD

gun to toolstring.








RIH, correlate on depth to reference log supplied by client, locate gun at 4778-4783m

perforating depth, record SBHP / SBHT. Attempt to establish 300psi underbalance.

Whilst maintaining the guns on depth, perforate then flow well for 15 minutes for clean up. Measure FBHP / FBHT, shut well, POOH.					
Before Firing, SBHT: 223.6 DegF / SBHP: 3754 Psia					
After Firing (15 mins), FBHT: 225.5 DegF / FBHP: 3455 Psia					
Secure firing system with ASFS used.					
Perforation interval: 4778m – 4783m MDKB					
Bottom WPST (TZ) to top shot = 2.73m, TZ stop depth = 4775.27m					
Charge Type: 2" PJ Omega					
Penetration: 21.8 in, Entrance Hole: 0.22 in, Explosive: HMX					

RUN 1			RUN 2		
SERVICE ORDER #:			SERVICE ORDER #:		
PROGRAM VERSION:			PROGRAM VERSION:		
FLUID LEVEL:			FLUID LEVEL:		
LOGGED INTERVAL	START	STOP	LOGGED INTERVAL	START	STOP

EQUIPMENT DESCRIPTION					
RUN 1			RUN 2		

	SURFACE EQUIPMENT			
	No SHM PSTD-B WITM-A PSC_16MHZ			
	DOWNHOLE EQUIPMENT			
	EQF-43 EQF-43 201			15.52
	PSTE MSH-A 1102 TTSA-A 503 Tension Sub			13.70
	PSTE-S 79 PSTE-S 77 PSC-ATS PSTC-A Motor Supervisor PSTE_PS PSTE_PSB			
	Head Tens	12.84		
	CCL Pull Forc Basic Mea Pwr Suppl	11.28 11.04		
	PBMS-T PBSH PBMS-A 3777 10k_Sapphire_Mano RTD_Thermometer GR CCL			11.04
	GR			
	Well_Temp Manometer CCL PBMS	9.84 9.80 9.61 9.39		
	WPST-AE WPSH-AA 18 WPSC			9.39
	WPST ACC WPST UAB WPST Sens			
		8.51		
	AH-ATPS AH-ATPS			8.51
AH-WPSA AH-WPSA 4004			7.90	
AH-Firing Head AH-Firing Head			7.14	

WPP_AS_GUN
GUN

6.55

SHM Monit HV
Tension 0.00

MAXIMUM STRING DIAMETER 2.00 IN
MEASUREMENTS RELATIVE TO TOOL ZERO
ALL LENGTHS IN METERS

Client: Esso Austrailia Pty Ltd

Well: FORTESCUE A16A

Field: Fortescue

State: VIC

Country: Australia

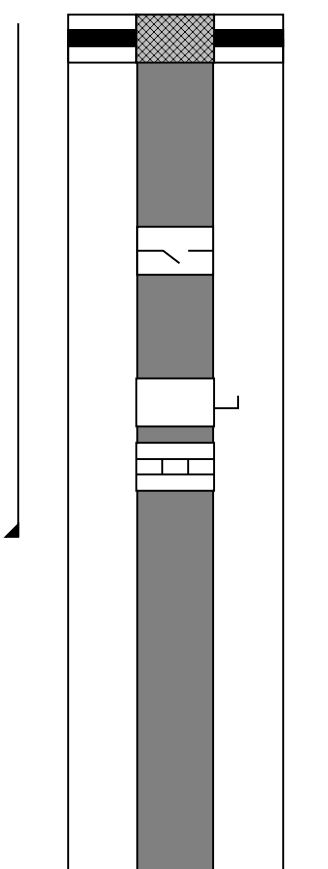
Rig Name: Prod 2

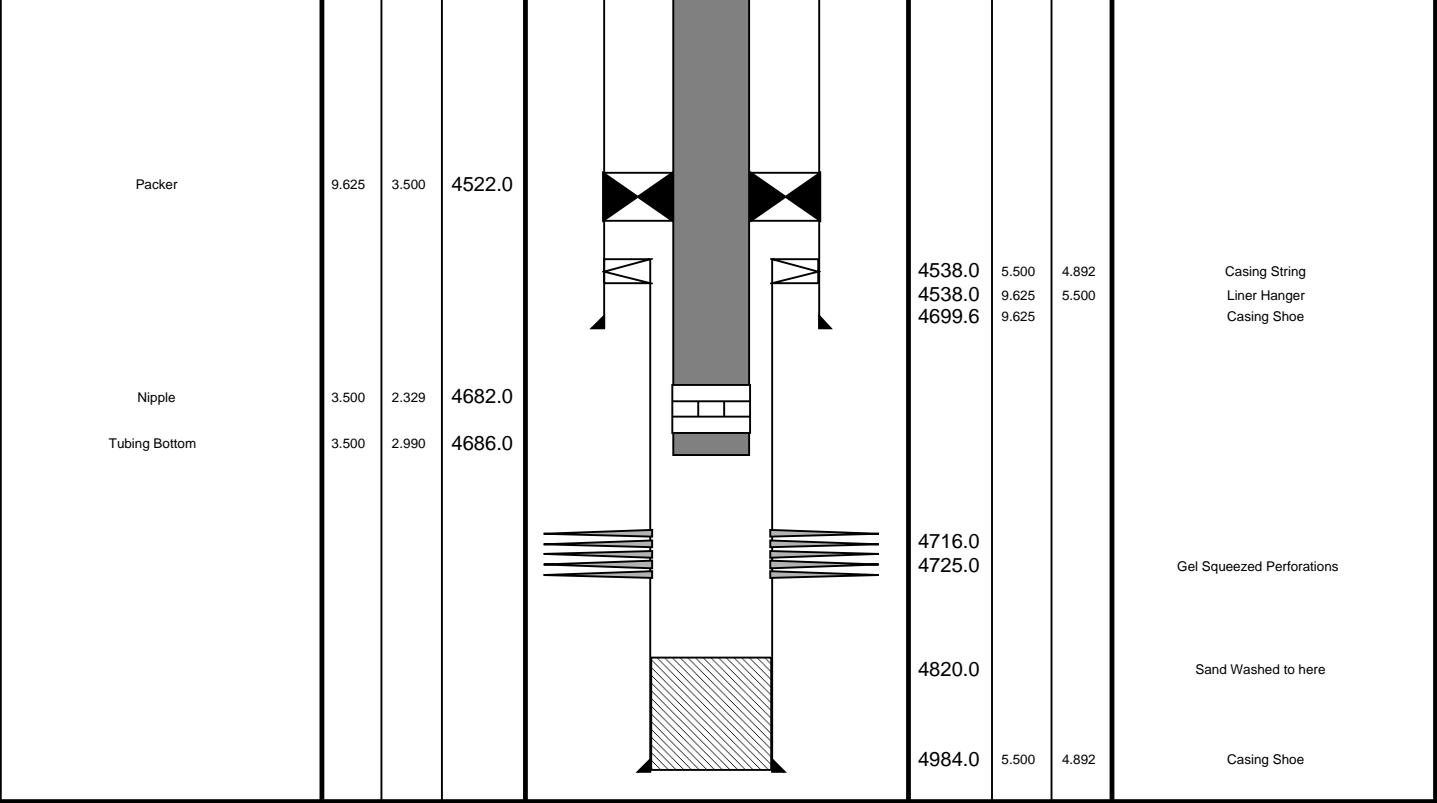
Reference Datum: Mean Sea Level

Elevation: 34.5 m

Drawing Date: 5/30/2010

API #:

Production String	(in)		(m)	Well Schematic	(m)		(in)		Casing String
	OD	ID	MD		MD	OD	ID		
Tubing Hanger Tubing	9.625 3.500	3.500 2.990	18.8		13.375 9.625			Casing String, 0.0 kg/m	
SSSV	3.500	2.750	455.0						
Side Pocket Mandrel	3.500	2.895	1110.0						
Landing Nipple	3.500	2.750	1124.0						
					1403.0	13.375		Casing Shoe	



Pressure / Temperature Firing Profile

MAXIS Field Log

Company: Esso Australia Pty Ltd. Well: FORTESCUE F16A

Input DLIS Files

DEFAULT PERFO_Perfo_PSP_049LTP FN:48 PRODUCER 29-May-2010 14:07 4775.3 M

Output DLIS Files

DEFAULT PERFO_Perfo_PSP_049PTP FN:2 PRODUCER 30-May-2010 15:46 4775.3 M

OP System Version: 18C0-147

WPP_AS_GUN SRPC-3972-Q1_2010_OP18 WPST-AE SRPC-3972-Q1_2010_OP18
PBMS-T SRPC-3972-Q1_2010_OP18 PSTE SRPC-3972-Q1_2010_OP18

11:43:15

225.55

225.54

225.54

225.52

225.51

225.50

225.49

225 49

025 49

225 49

225 48

225 18

225 18

225 19

b25 49

1
D25 50

225 50

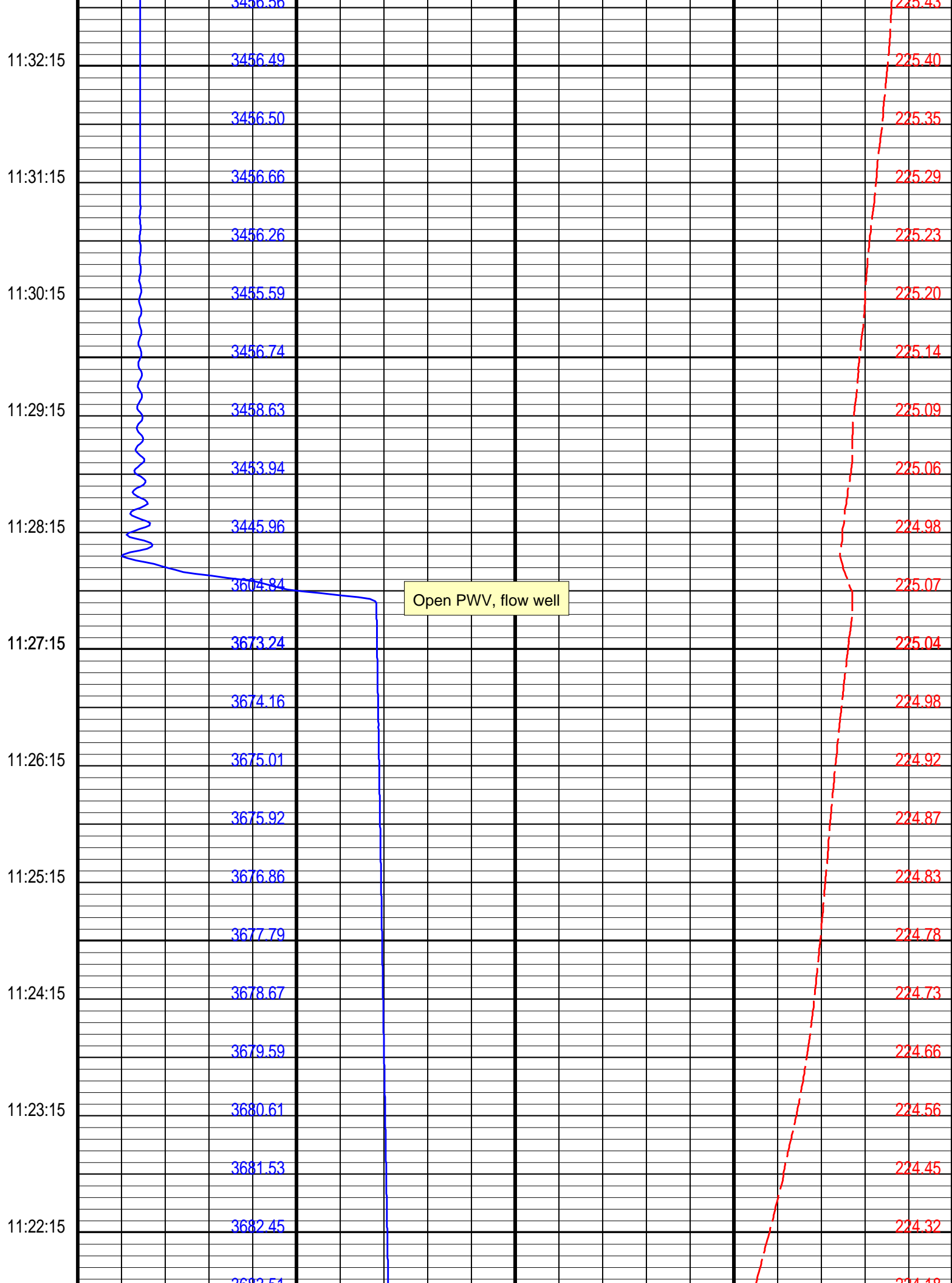
0.25 50

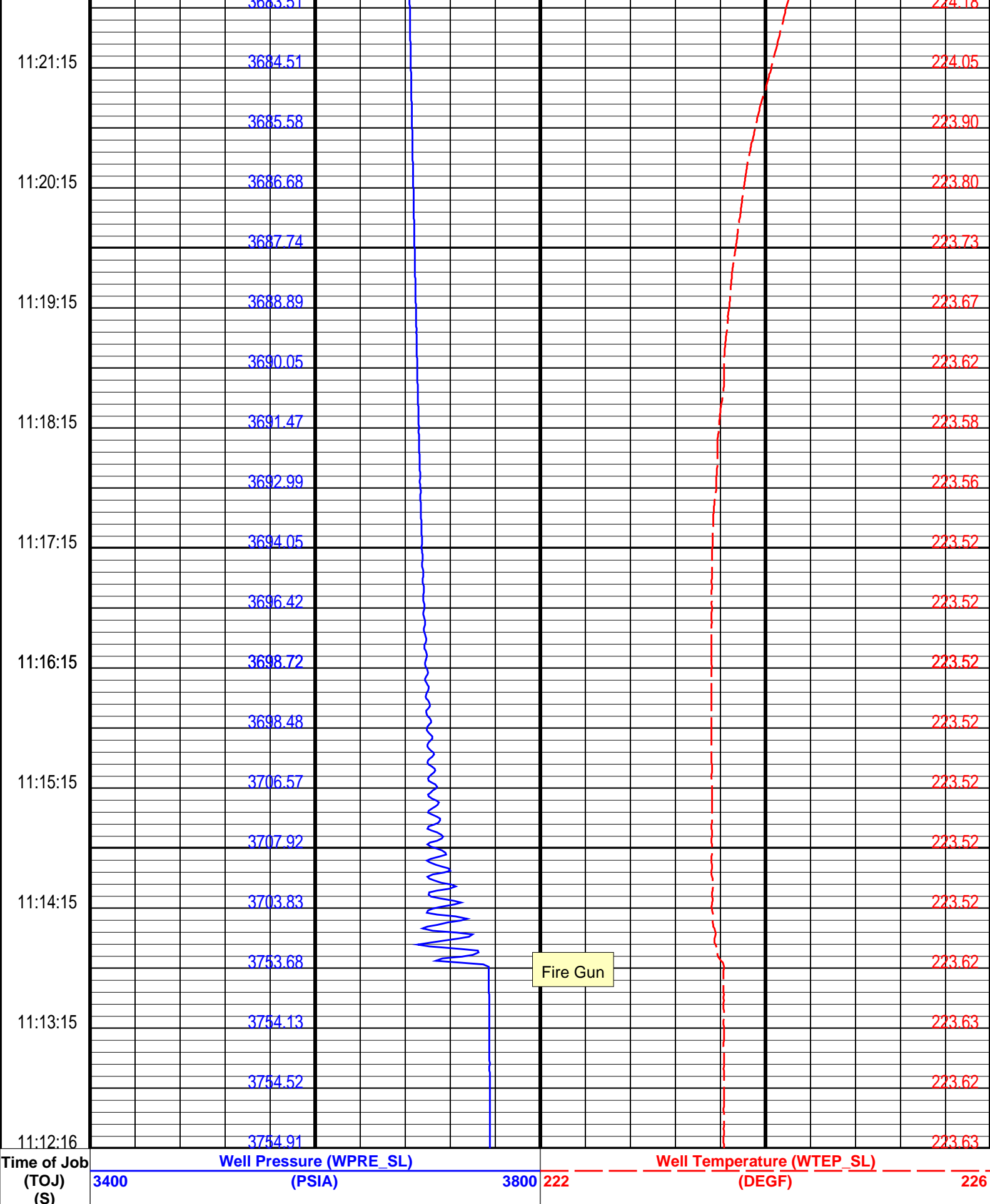
025 10

1
box 10

005 10

005 10





Parameters		
DLIS Name	Description	Value
WPST-AE: WPP Shooting Tool		
U-COMM VOLT	ASES Comm Voltage	50 V

U-ERSB_ON_TIME	ERSB Voltage Hold Time	180	S
U-SEC_ON_TIME	SECURE Voltage Hold Time	10	S
U-SHOOT_VOLT_LIM	Shooting Voltage Limit	510	V
PSTE: Production Services Tractor Tool – Slim			
CCLG	Casing Collar Locator Gain	0DB	
System and Miscellaneous			
PP	Playback Processing	NORMAL	

Format: WPP Station	Vertical Scale: 1" per 60S	Graphics File Created: 30-May-2010 15:46
---------------------	----------------------------	--

OP System Version: 18C0-147

WPP_AS_GUN	SRPC-3972-Q1_2010_OP18	WPST-AE	SRPC-3972-Q1_2010_OP18
PBMS-T	SRPC-3972-Q1_2010_OP18	PSTE	SRPC-3972-Q1_2010_OP18

Input DLIS Files

DEFAULT	PERFO_Perfo_PSP_049LTP	FN:48	PRODUCER	29-May-2010 14:07	4775.3 M
---------	------------------------	-------	----------	-------------------	----------

Output DLIS Files

DEFAULT	PERFO_Perfo_PSP_049PTP	FN:2	PRODUCER	30-May-2010 15:46
---------	------------------------	------	----------	-------------------



Perforating Record

MAXIS Field Log

Company:	Well:
----------	-------

Output DLIS Files

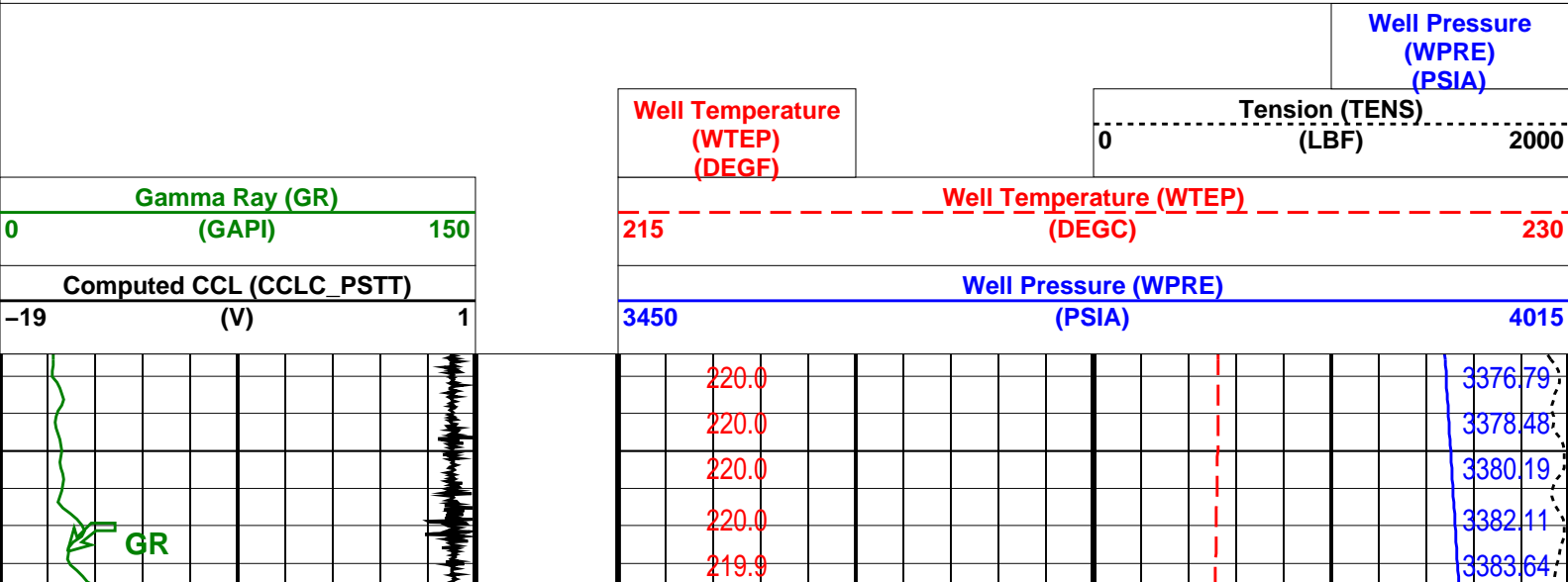
DEFAULT	PERFO_Perfo_PSP_048LUP	FN:47	PRODUCER	28-May-2010 11:06	4800.8 M	4717.4 M
---------	------------------------	-------	----------	-------------------	----------	----------

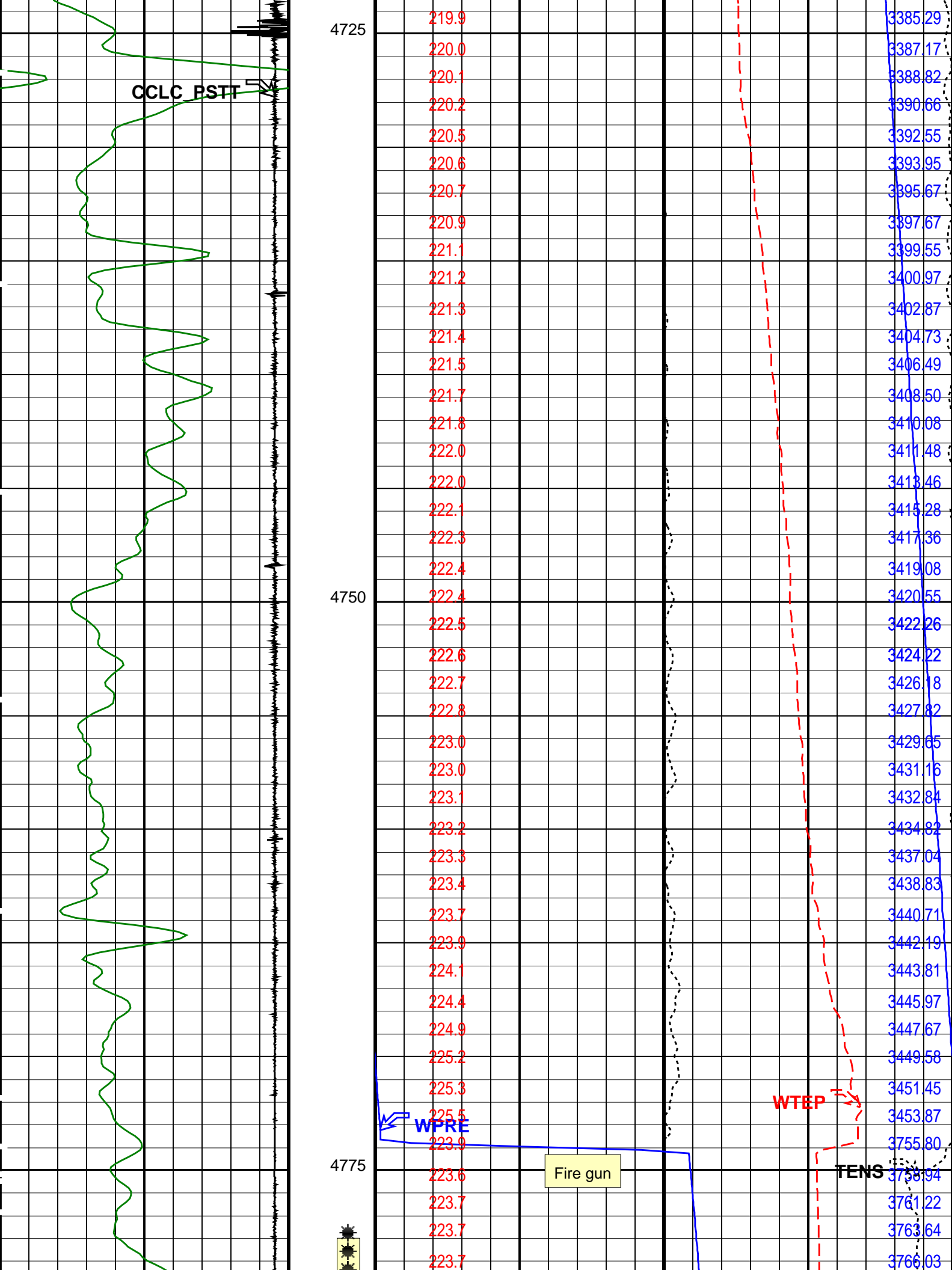
OP System Version: 18C0-147

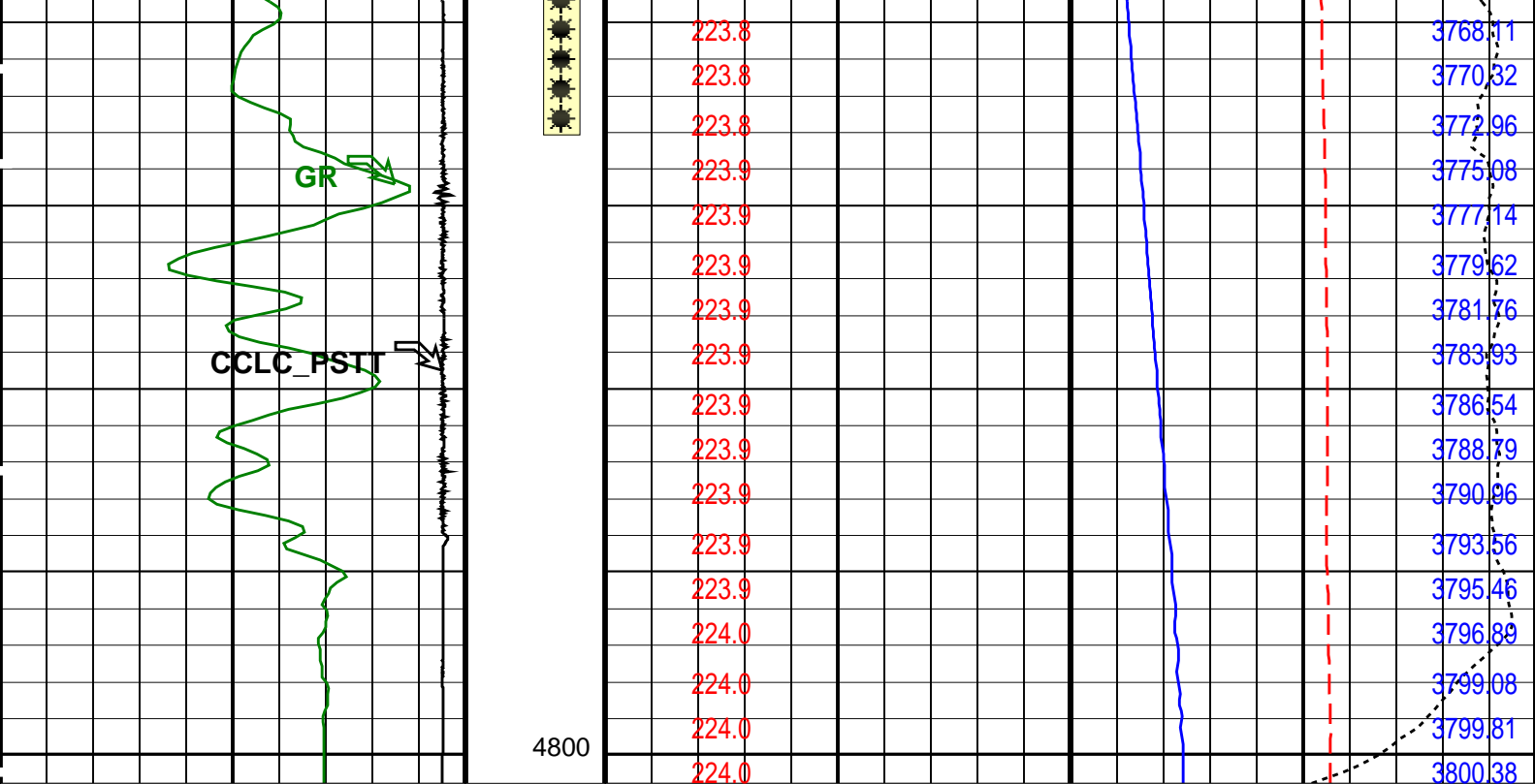
WPP_AS_GUN	SRPC-3972-Q1_2010_OP18	WPST-AE	SRPC-3972-Q1_2010_OP18
PBMS-T	SRPC-3972-Q1_2010_OP18	PSTE	SRPC-3972-Q1_2010_OP18

PIP SUMMARY

Time Mark Every 60 S







Computed CCL (CCLC_PSTT)		Well Pressure (WPRE)	
-19	(V)	3450	(PSIA)
Gamma Ray (GR)		Well Temperature (WTEP)	
0	(GAPI)	215	(DEGC)
		Tension (TENS)	
		0	(LBF)
		Well Pressure (WPRE)	
		(PSIA)	

PIP SUMMARY

Time Mark Every 60 S

Parameters

DLIS Name	Description	Value
WPST-AE: WPP Shooting Tool		
U-COMM_VOLT	ASFS Comm Voltage	50 V
U-ERSB_ON_TIME	ERSB Voltage Hold Time	180 S
U-SEC_ON_TIME	SECURE Voltage Hold Time	2 S
U-SHOOT_VOLT_LIM	Shooting Voltage Limit	510 V
PSTE: Production Services Tractor Tool - Slim		
CCLG	Casing Collar Locator Gain	24DB

Format: PERFO Vertical Scale: 1:200 Graphics File Created: 28-May-2010 11:06

OP System Version: 18C0-147

WPP_AS_GUN	SRPC-3972-Q1_2010_OP18	WPST-AE	SRPC-3972-Q1_2010_OP18
PBMS-T	SRPC-3972-Q1_2010_OP18	PSTE	SRPC-3972-Q1_2010_OP18

Output DLIS Files

DEFAULT	PERFO_Perfo_PSP_048LUP	FN:47	PRODUCER	28-May-2010 11:06
---------	------------------------	-------	----------	-------------------

Company: Well:

Output DLIS Files

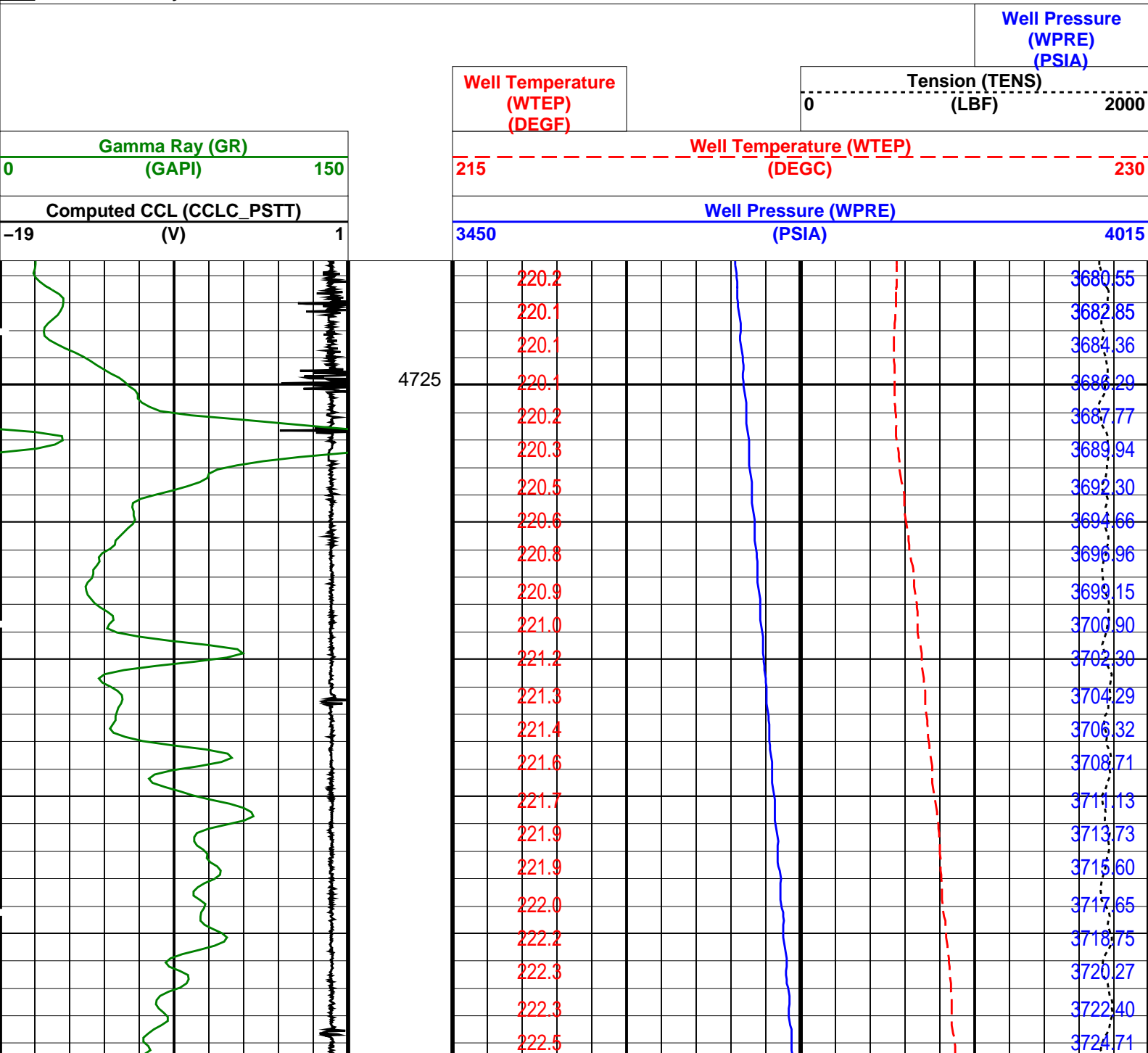
DEFAULT PERFO_Perfo_PSP_047LUP FN:46 PRODUCER 28-May-2010 10:55 4801.4 M 4720.4 M

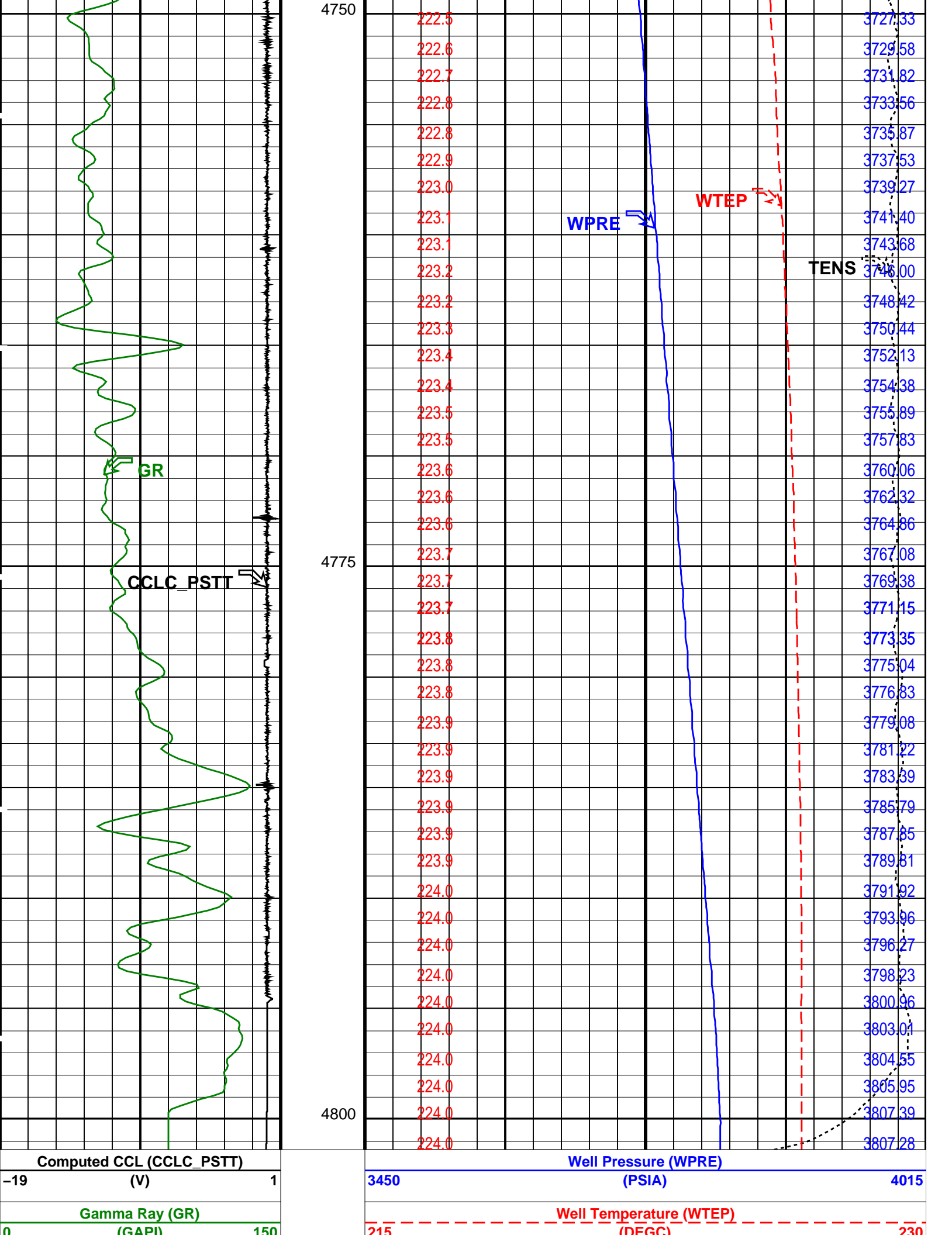
OP System Version: 18C0-147

WPP_AS_GUN SRPC-3972-Q1_2010_OP18 WPST-AE SRPC-3972-Q1_2010_OP18
PBMS-T SRPC-3972-Q1_2010_OP18 PSTE SRPC-3972-Q1_2010_OP18

PIP SUMMARY

Time Mark Every 60 S





(SAR)		215	(DEGG)		200	
		Well Temperature (WTEP) (DEGF)			Tension (TENS) (LBF) 0 2000	
Well Pressure (WPRE) (PSIA)						
PIP SUMMARY						
Time Mark Every 60 S						
Parameters						
DLIS Name	Description	Value				
WPST-AE: WPP Shooting Tool						
U-COMM_VOLT	ASFS Comm Voltage	50	V			
U-ERSB_ON_TIME	ERSB Voltage Hold Time	180	S			
U-SEC_ON_TIME	SECURE Voltage Hold Time	2	S			
U-SHOOT_VOLT_LIM	Shooting Voltage Limit	510	V			
PSTE: Production Services Tractor Tool – Slim						
CCLG	Casing Collar Locator Gain	24DB				
Format: PERFO		Vertical Scale: 1:200		Graphics File Created: 28-May-2010 10:55		
OP System Version: 18C0-147						
WPP_AS_GUN	SRPC-3972-Q1_2010_OP18	WPST-AE	SRPC-3972-Q1_2010_OP18			
PBMS-T	SRPC-3972-Q1_2010_OP18	PSTE	SRPC-3972-Q1_2010_OP18			
Output DLIS Files						
DEFAULT	PERFO_Perfo_PSP_047LUP	FN:46	PRODUCER	28-May-2010 10:55		
Company: Esso Australia Pty Ltd.						
Schlumberger						
Well:	FORTESCUE F16A					
Field:	Fortescue					
Rig:	Prod 2					
Country:	Australia					
2" PJO HSD						
Perforation Record						
28-May-2010						